



DE VALK  
YACHT BROKERS



## YARROW & CO. MOTORSAILER 34M



DE VALK  
YACHT BROKERS

## BROKER'S COMMENTS

A true icon of maritime heritage, Southern Cross is a 33 m Bermuda-rigged ketch built by Yarrow & Co. and designed by McPherson Campbell. This exceptional yacht was awarded the Lloyd's Register Yacht of the Year Trophy in 1962 for its outstanding design and craftsmanship. Once believed to have been commissioned as a gift for the British Royal Family, Southern Cross blends timeless elegance with generous proportions. Her classic layout includes five cabins, two spacious salons, and an expansive two-level deck ideal for entertaining and extended cruising. In commercial class and fully operative.

*Tue Simon Fasting*

## SPECIFICATIONS

<b>Dimensions</b>	33.70 x 7.06 x 3.84 (m)	<b>Builder</b>	Yarrow & Co. Glasgow
<b>Built</b>	1962	<b>Cabins</b>	
<b>Material</b>	Steel	<b>Berths</b>	
<b>Engine(s)</b>	2 x Gardner 8L3B diesel	<b>Hp/Kw</b>	2 x 260.00 (hp), 191.36 (kw)
<b>Asking price</b>	€ 1.050.000 (VAT Not paid)	<b>Lying</b>	Spain

## CONTACT

<b>Sales office</b>	De Valk Barcelona	<b>Telephone</b>	+34 932 202 825
<b>Address</b>	Barcelona region 08392 Barcelona ES	<b>E-mail</b>	barcelona@devalk.nl

## DISCLAIMER

These particulars are given in good faith as supplied but cannot be guaranteed.



# YARROW & CO. MOTORSAILER 34M

## GENERAL

<b>Model</b>	YARROW & CO. MOTORSAILER 34M
<b>Type</b>	motorsailer
<b>LOA (m)</b>	33,70
<b>Beam (m)</b>	7,06
<b>Draft (m)</b>	3,84
<b>Year built</b>	1962
<b>Builder</b>	Yarrow & Co. Glasgow
<b>Country</b>	United Kingdom
<b>Gross tonnage</b>	182
<b>Net tonnage</b>	54
<b>CE norm</b>	NA
<b>Hull material</b>	steel
<b>Hull colour</b>	white
<b>Keel type</b>	Long keel with skeg
<b>Deck finish</b>	teak Birminia 5 - 8 cm. Laid 2005
<b>Antifouling (year)</b>	+ anodes 2026 (extra pictures available)
<b>Fuel tank (litre)</b>	2 x 7500
<b>Level indicator (fuel tank)</b>	yes
<b>Fuel daytank (litre)</b>	1500
<b>Freshwater tank (litre)</b>	6000 + 2000 reserve
<b>Level indicator (freshwater)</b>	yes
<b>Blackwater tank (litre)</b>	1200
<b>Greywater tank (litre)</b>	300 + 200
<b>Level indicator (greywater)</b>	yes
<b>More info on hull</b>	Hull thickness reports available

## ACCOMMODATION

<b>Crew cabin</b>	3
<b>Crew berths</b>	5 including Captain's cabin
<b>Deck saloon</b>	yes



# YARROW & CO. MOTORSAILER 34M

Heating	central hot water
Air-conditioning	single cycle airco Sova main unit in the engine room
Navigation center	yes
Chart table	yes
Galley	yes
Sink	stainless steel
Cooker	yes
Oven	yes
Extractor	yes
Microwave	yes
Fridge	yes
Freezer	yes
Hot water system	220V
Water pressure system	electrical 2 X Gut Maxima presion 10 Bar
Dishwasher	yes
Kettle	yes
Ice maker	yes
Coffee maker	yes
Crockery	yes
Owners cabin	double bed
Wardrobe	hanging/drawers/shelves
Bathroom	en suite
Guest cabin 1	double bed
Wardrobe	hanging/drawers/shelves
Bathroom	en suite
Guest cabin 2	twin single
Wardrobe	hanging/drawers/shelves
Bathroom	en suite
Guest cabin 3	twin single
Wardrobe	hanging/drawers/shelves
Bathroom	En suite
Guest cabin 4	double bed



<b>Wardrobe</b>	hanging/drawers/shelves
<b>Bathroom</b>	En suite
<b>Washing machine</b>	yes
<b>Dryer</b>	yes
<b>Wet bar</b>	yes

## MACHINERY

<b>No of engines</b>	2
<b>Make</b>	Gardner
<b>Type</b>	8L3B
<b>HP</b>	260
<b>kW</b>	191.36
<b>Fuel</b>	diesel
<b>Year installed</b>	1962
<b>Year of overhaul</b>	2023
<b>Engine hours</b>	76000
<b>Engine cooling system</b>	freshwater heat exchanger
<b>Secondary engine</b>	IVECO (2007)
<b>Bowthruster</b>	15 KW
<b>Propeller type</b>	fixed
<b>Propeller blades</b>	4
<b>Propeller shaft material</b>	stainless steel
<b>Generator</b>	Paguro
<b>Running hours generator</b>	14000
<b>Start battery</b>	2+2+1+1 (12V)
<b>Service battery</b>	6 (24V)
<b>Battery charger</b>	3 X Mar 7 Victron + Centaur 24V
<b>Battery charger/inverter</b>	yes
<b>Watermaker</b>	yes

## NAVIGATION



Compass	Last revision 2025
Compass on flybridge	yes
Electric compass	yes
Depth sounder	Furuno FCV-581
VHF	DSC 6A + FCV-581 + GMDSS Perry RT2048
VHF handheld	5 units
Autopilot	Robertson AP20
Radar	Furuno 1931 Mark 2
GPS	Furuno Navigator
Navtex	Furuno receiver NX500
AIS receiver	FA 150
EPIRB	Ocean Signal 1Pro
Navigation lights	yes
Searchlight	yes

## EQUIPMENT

Cockpit cushions	yes
Cockpit table	yes
Cockpit chairs	yes
Boarding ladder	yes
Gangway	yes
Anchor	Hull type 2 X 150 kg
Anchor chain	2 X 32 mm X 150m
Windlass	hydraulic Multi function Marc2 Thomas Reid & Sons Numero 5490
Capstan	2 aft
Windlass aft	hydraulic
Dinghy	yes
Sea railing	steel
TV	yes
TV receiver	yes



Satellite	yes
Radio	yes
Latest extinguisher survey	2025
Extinguisher in engine room	yes
Auto extinguisher system	yes

## RIGGING

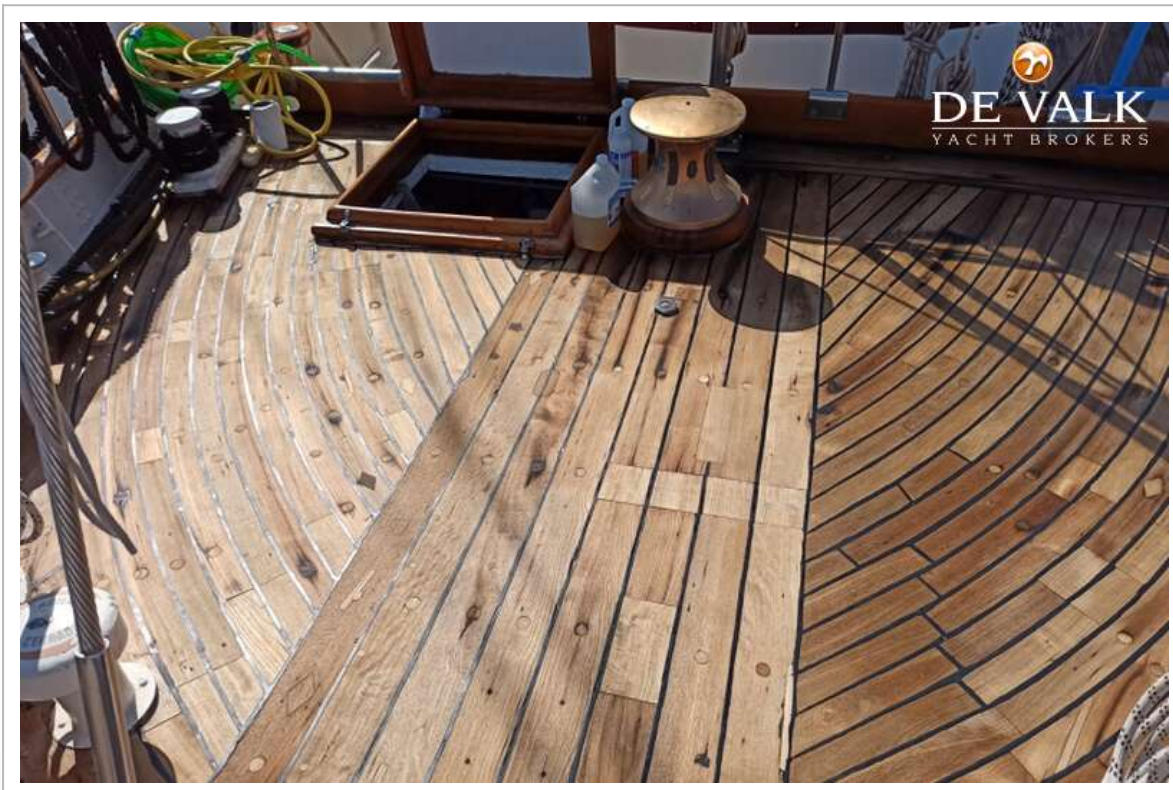
Rigging	Auxiliary ketch with a Bermuda rigging
Standing rigging	wire 2007
Material mast	wood 1 X 30m + 1 X 24m
Mainsail	2007
Mizzen	yes
Genoa	2007
Stormjib	2007
Primary sheet winch	2 manual
Multifunctional winches	Mizzen electrical



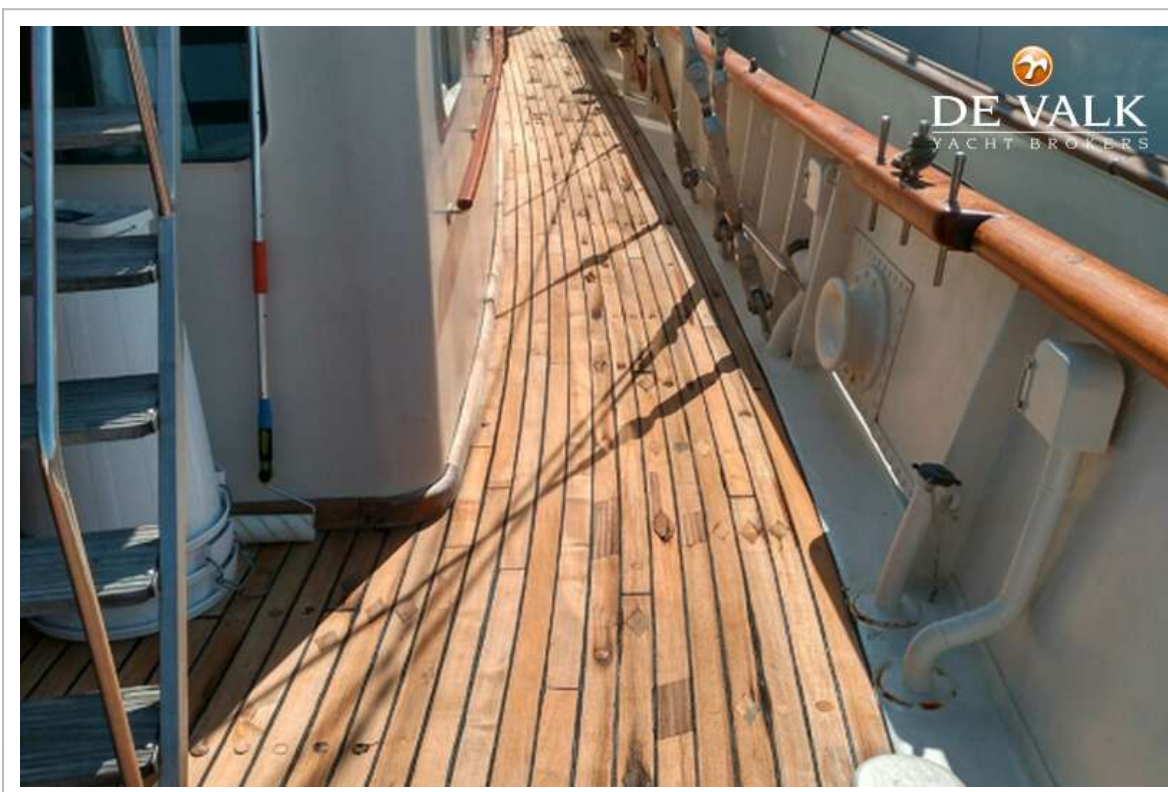
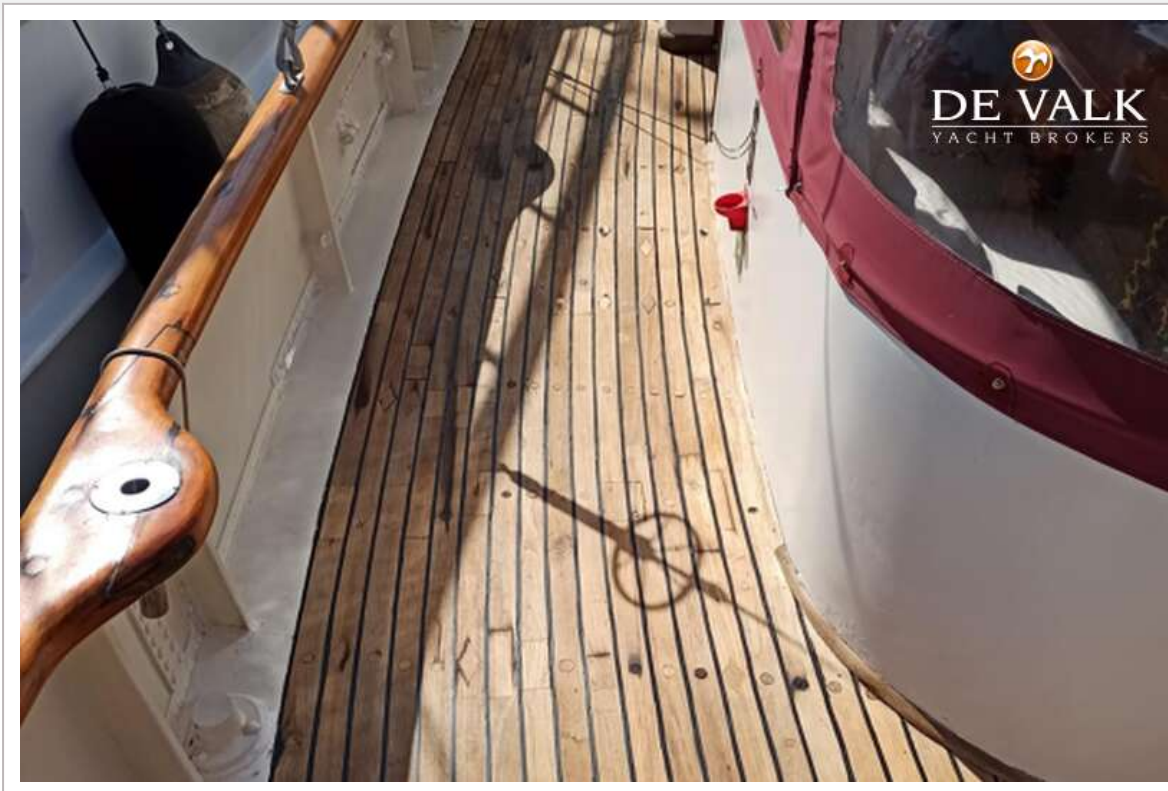
# YARROW & CO. MOTORSAILER 34M



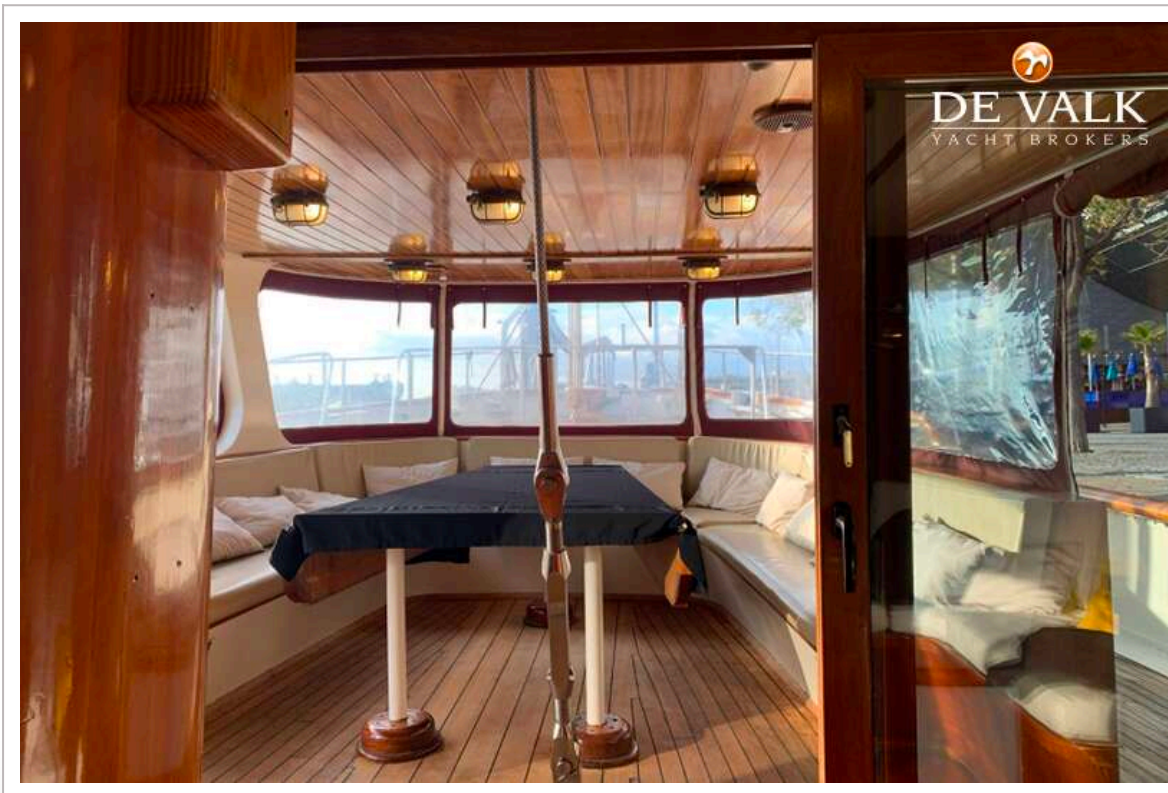
# YARROW & CO. MOTORSAILER 34M



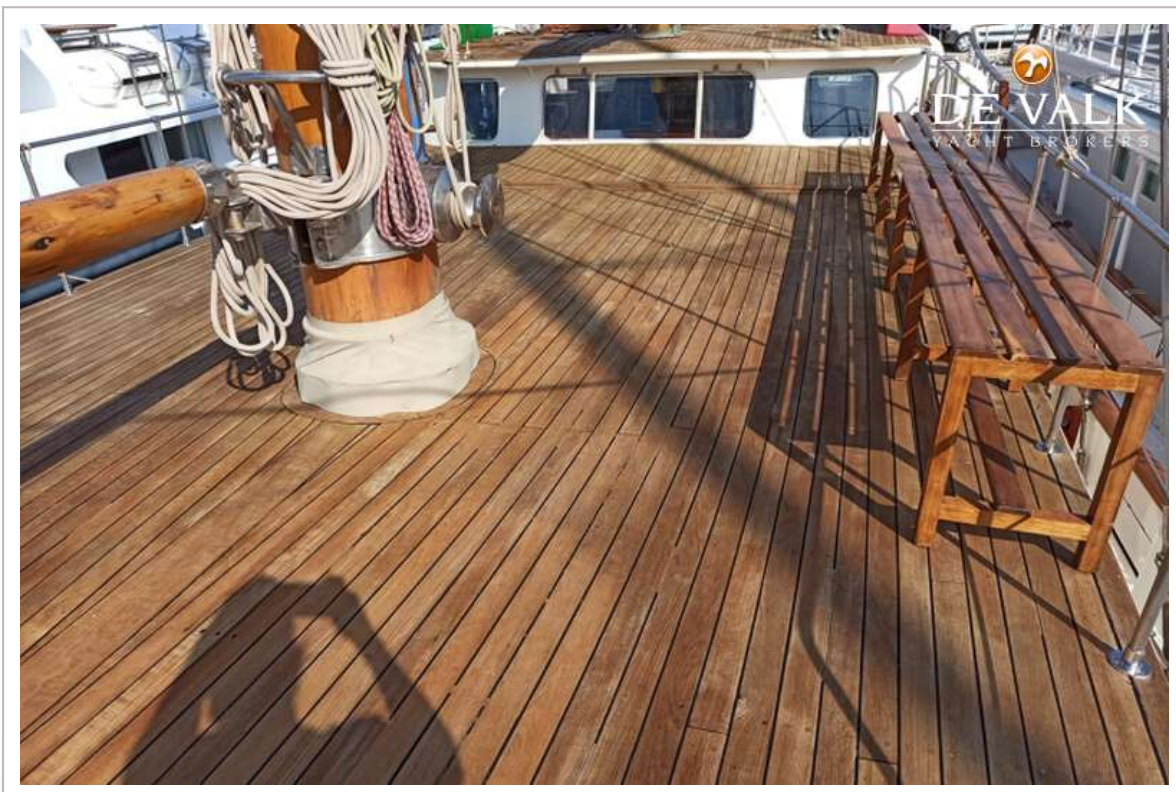
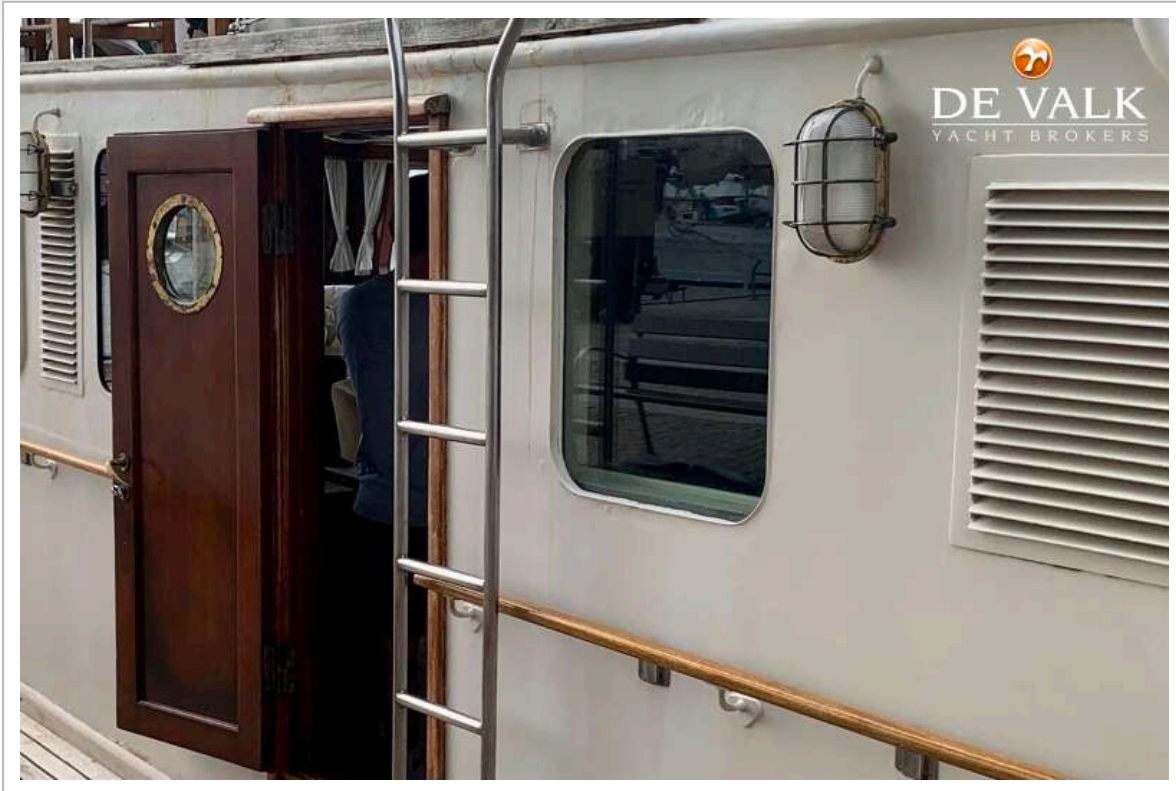
# YARROW & CO. MOTORSAILER 34M



# YARROW & CO. MOTORSAILER 34M



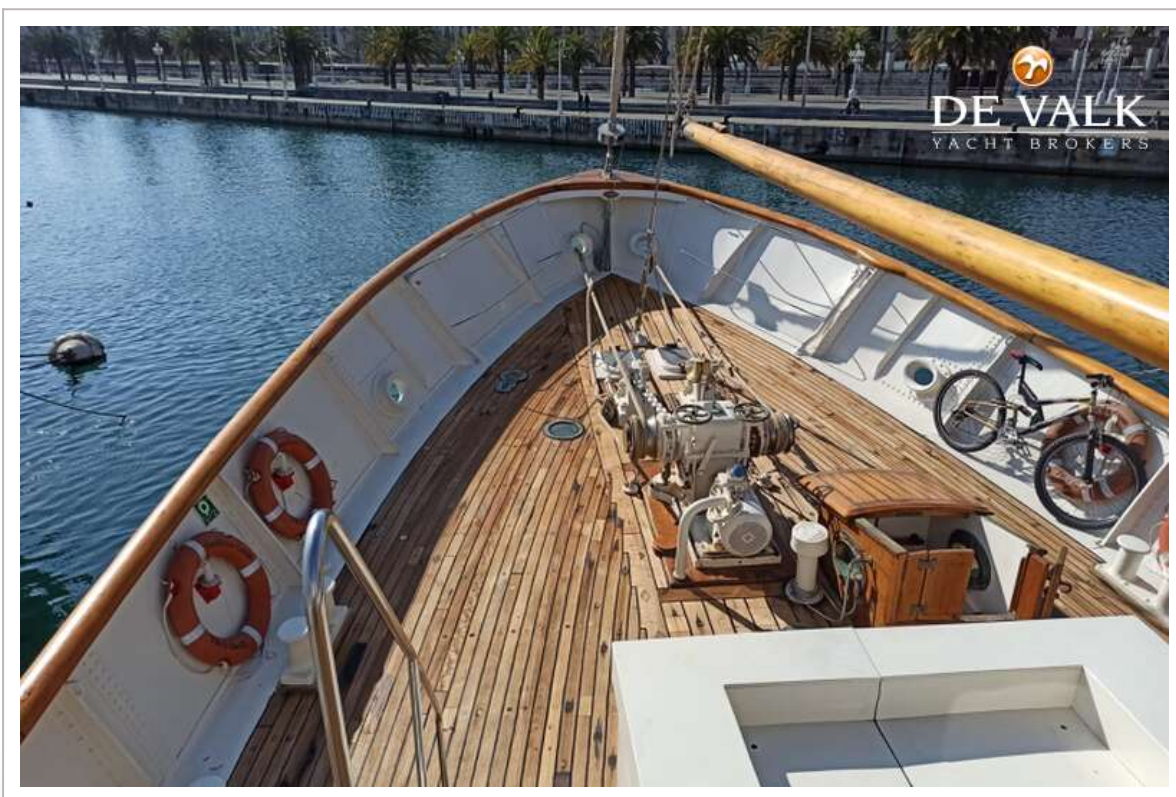
# YARROW & CO. MOTORSAILER 34M



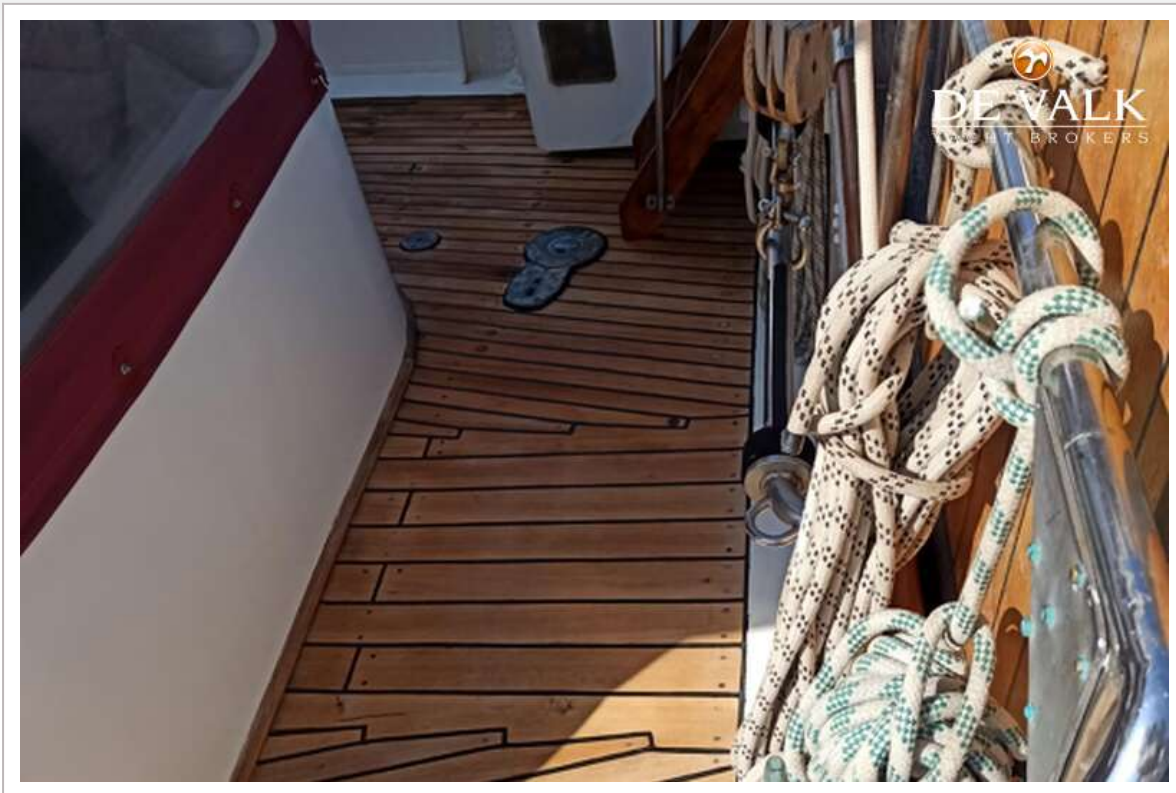
# YARROW & CO. MOTORSAILER 34M



# YARROW & CO. MOTORSAILER 34M



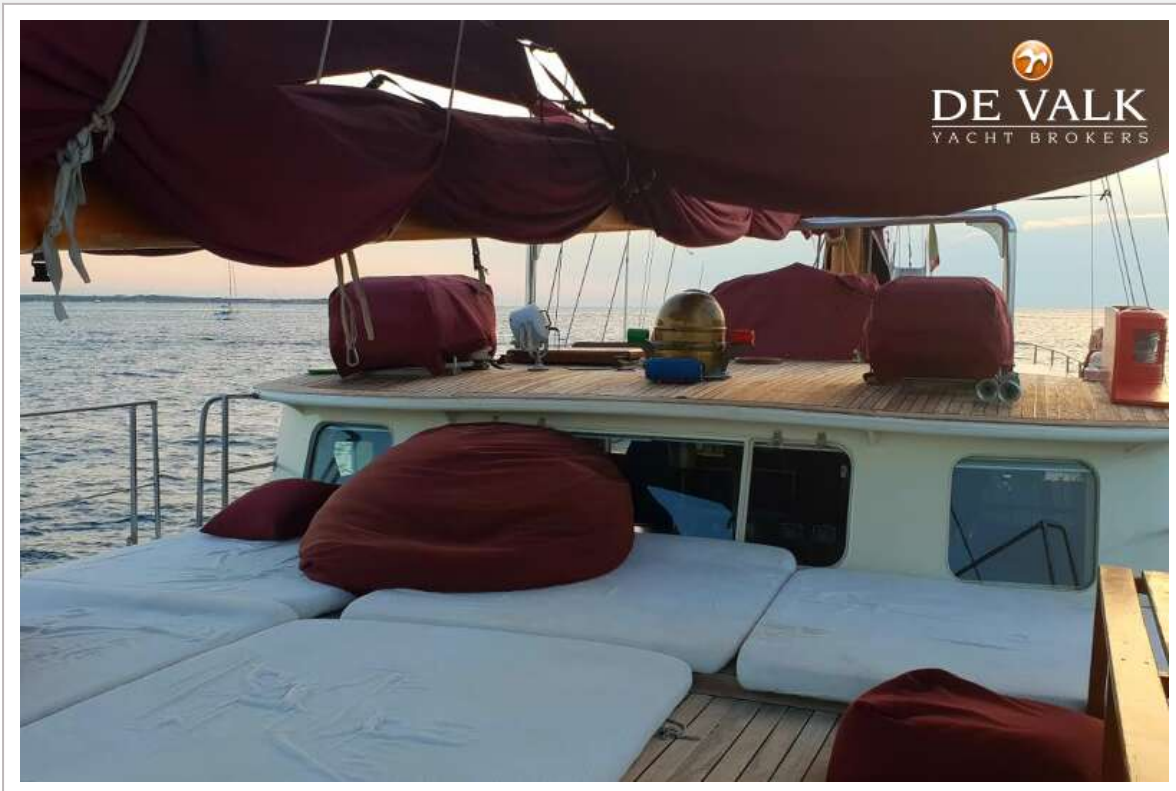
# YARROW & CO. MOTORSAILER 34M



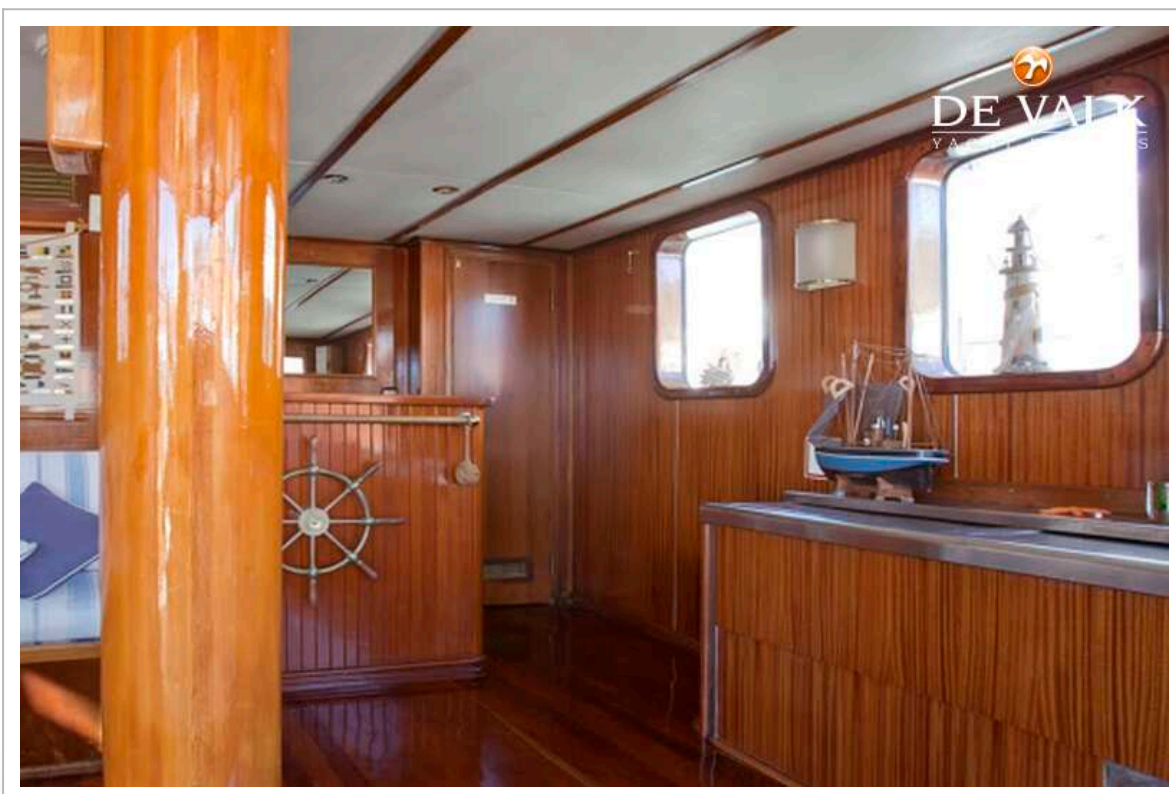
# YARROW & CO. MOTORSAILER 34M



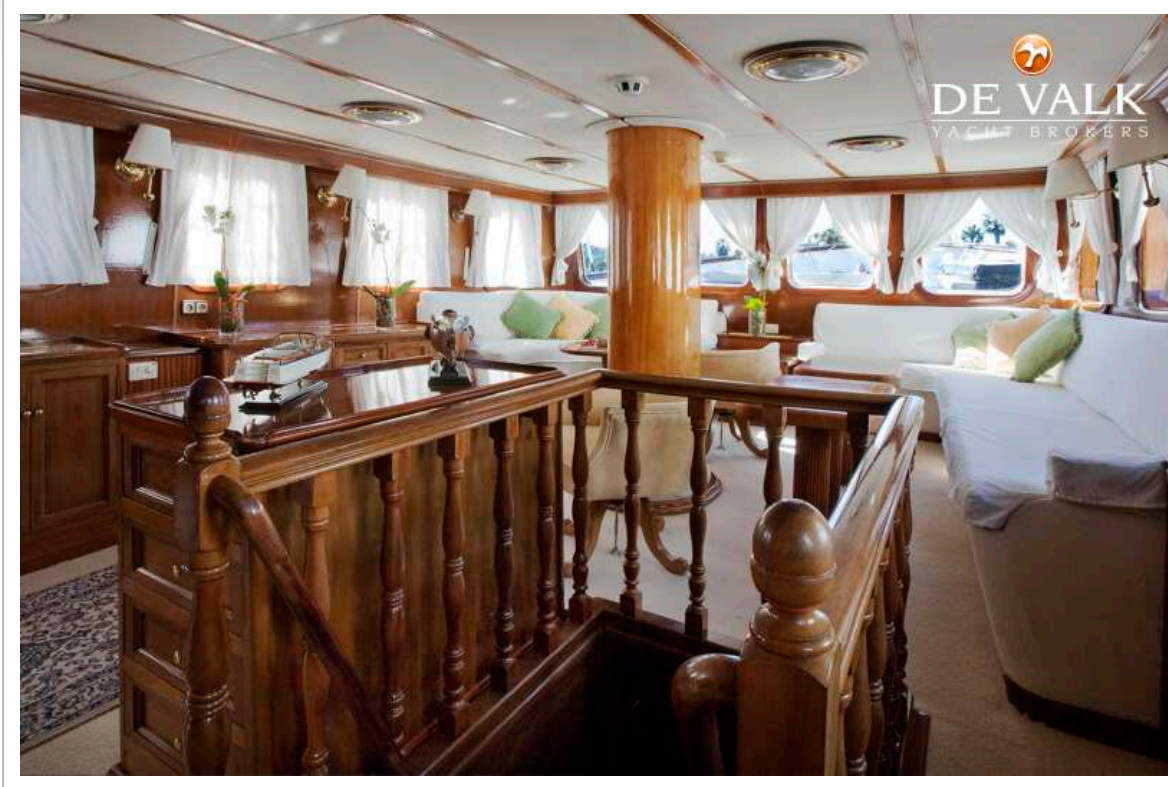
# YARROW & CO. MOTORSAILER 34M



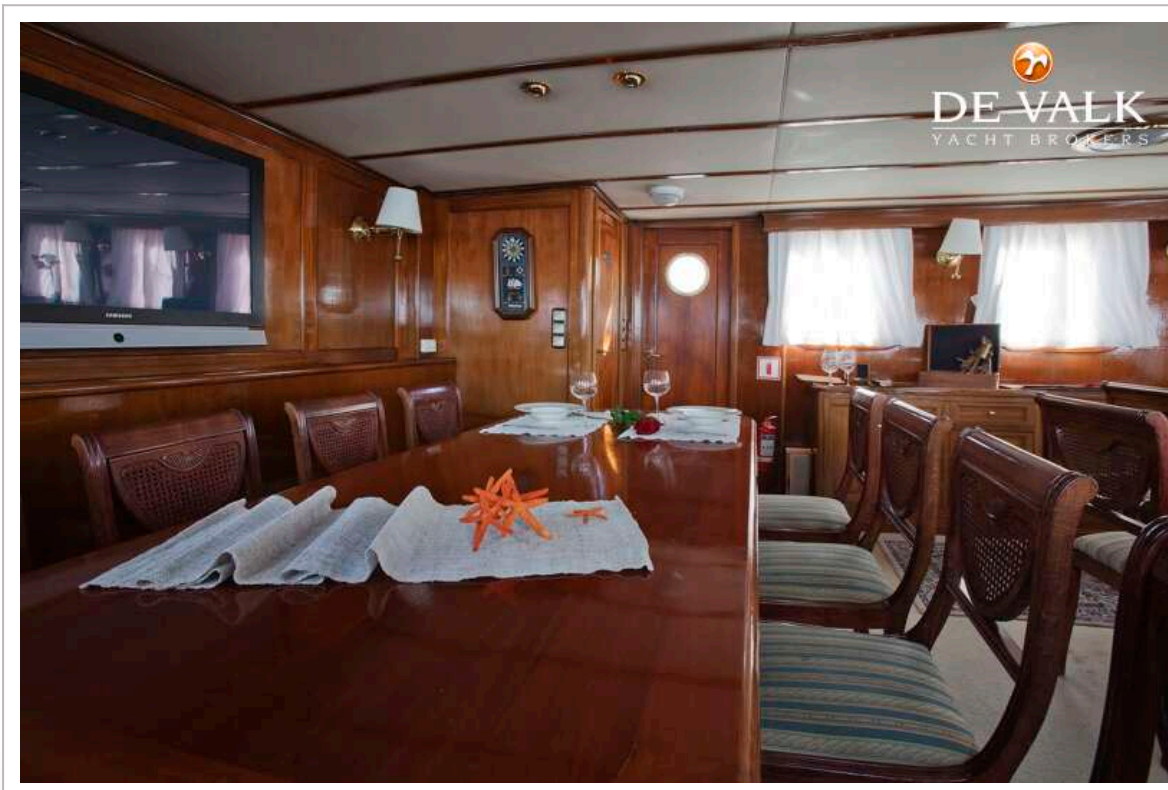
# YARROW & CO. MOTORSAILER 34M



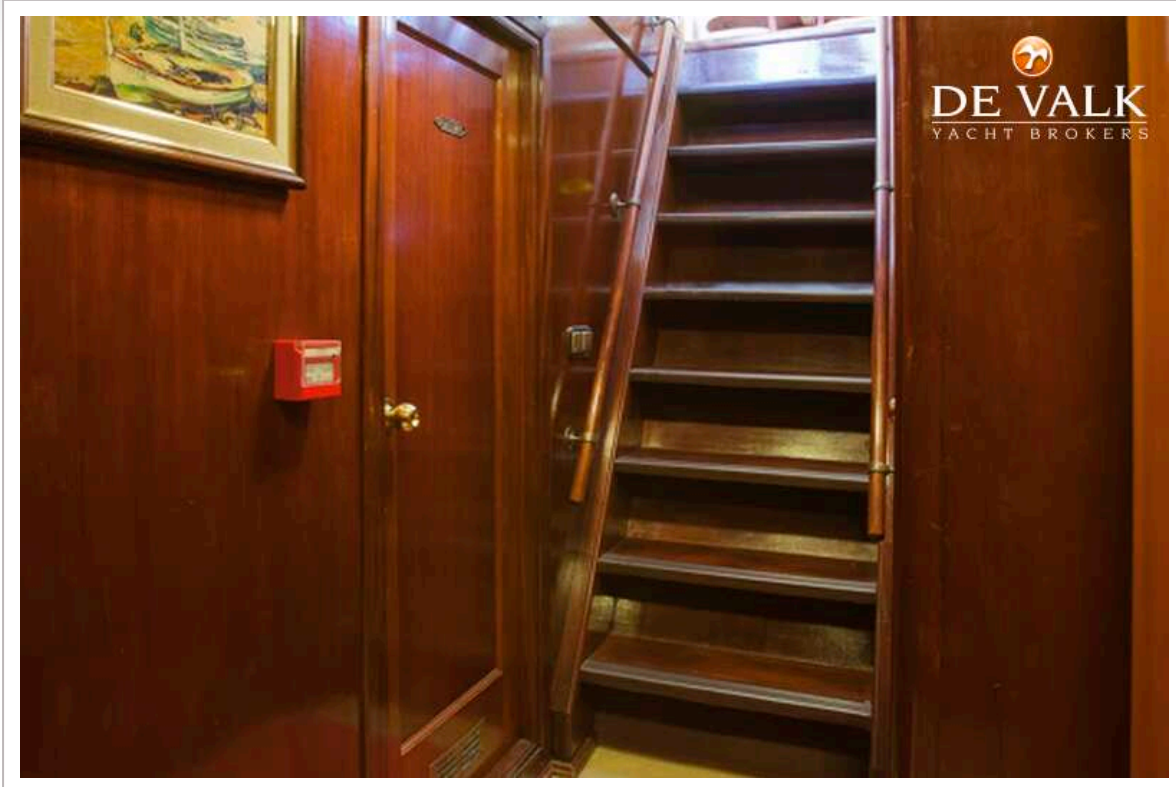
# YARROW & CO. MOTORSAILER 34M



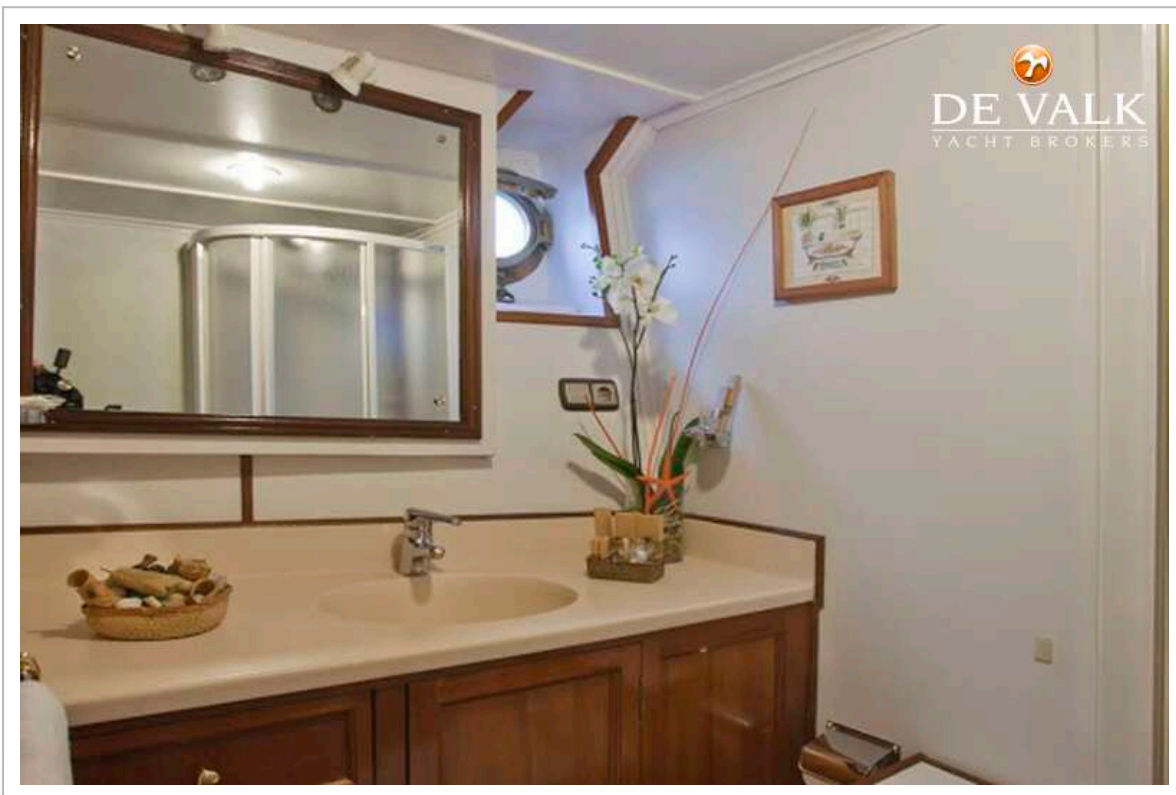
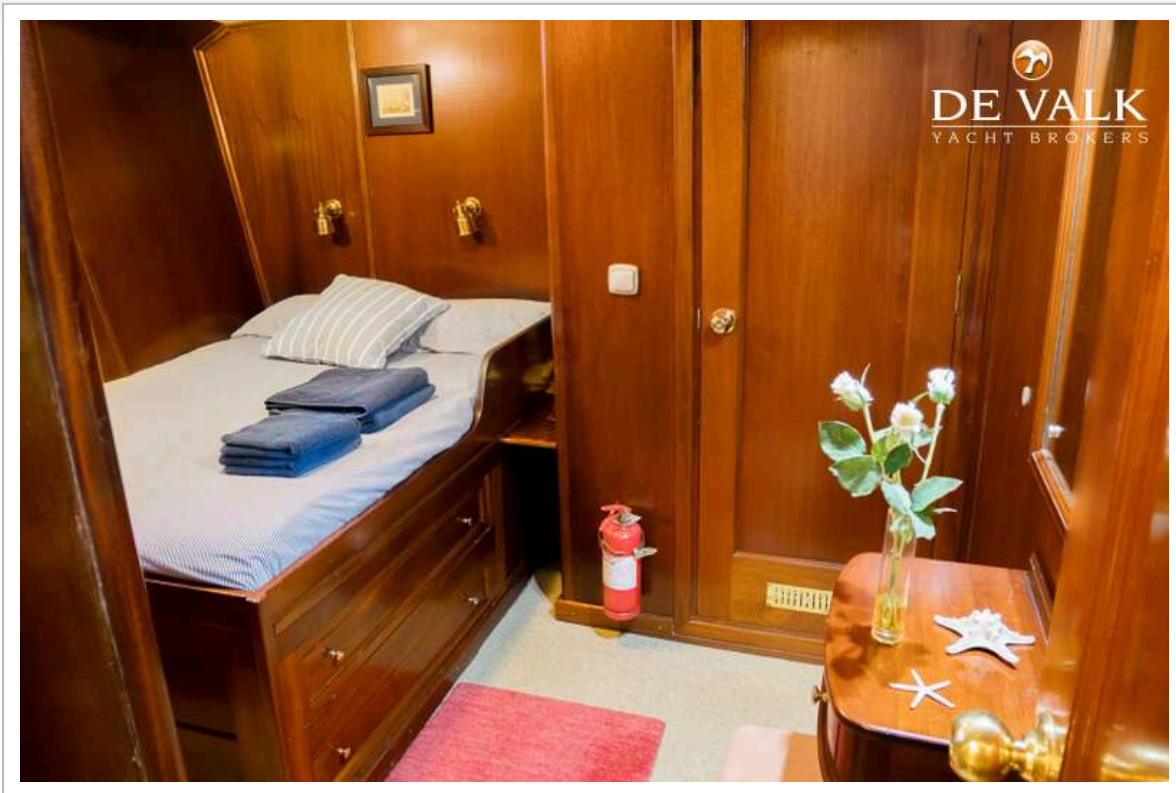
# YARROW & CO. MOTORSAILER 34M



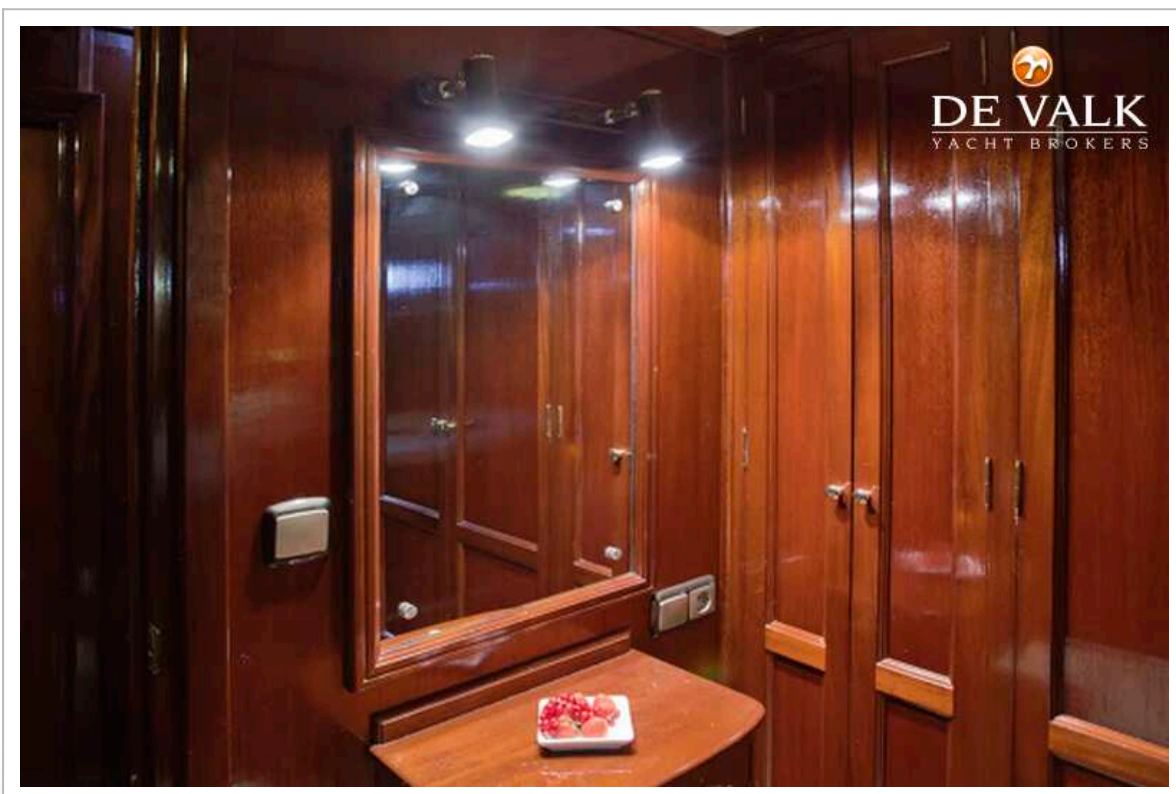
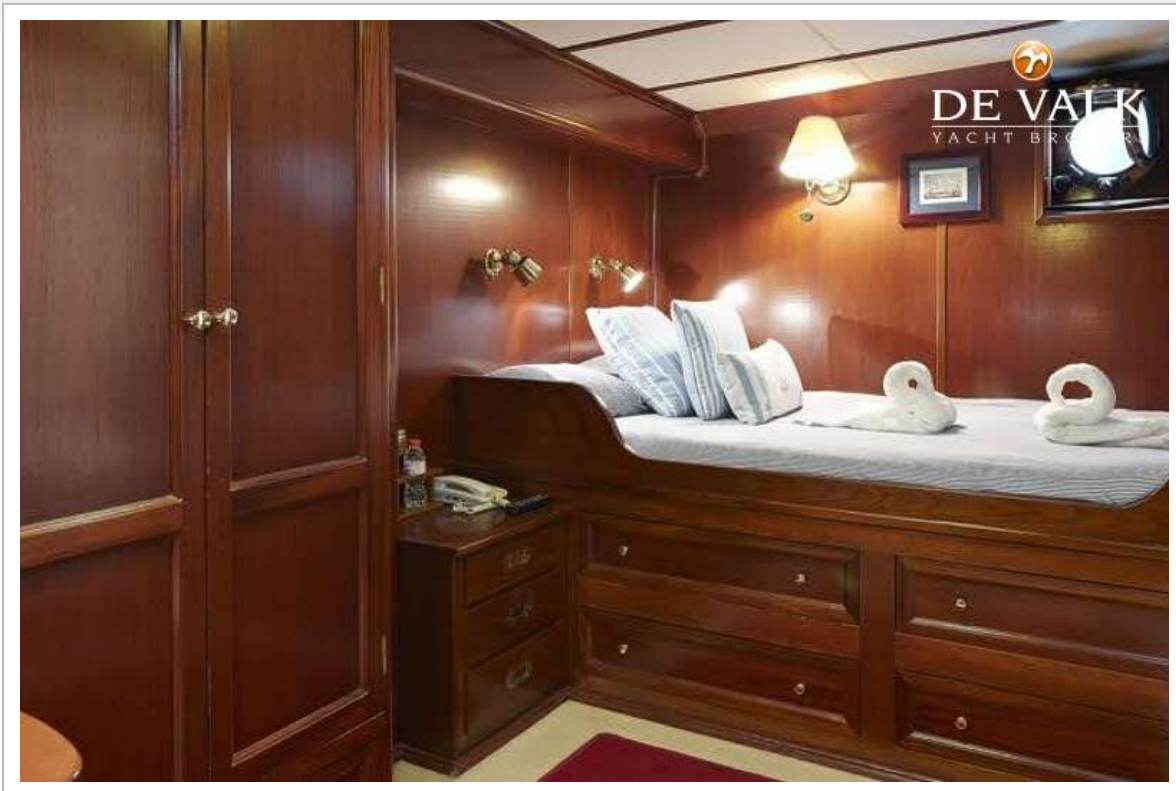
# YARROW & CO. MOTORSAILER 34M



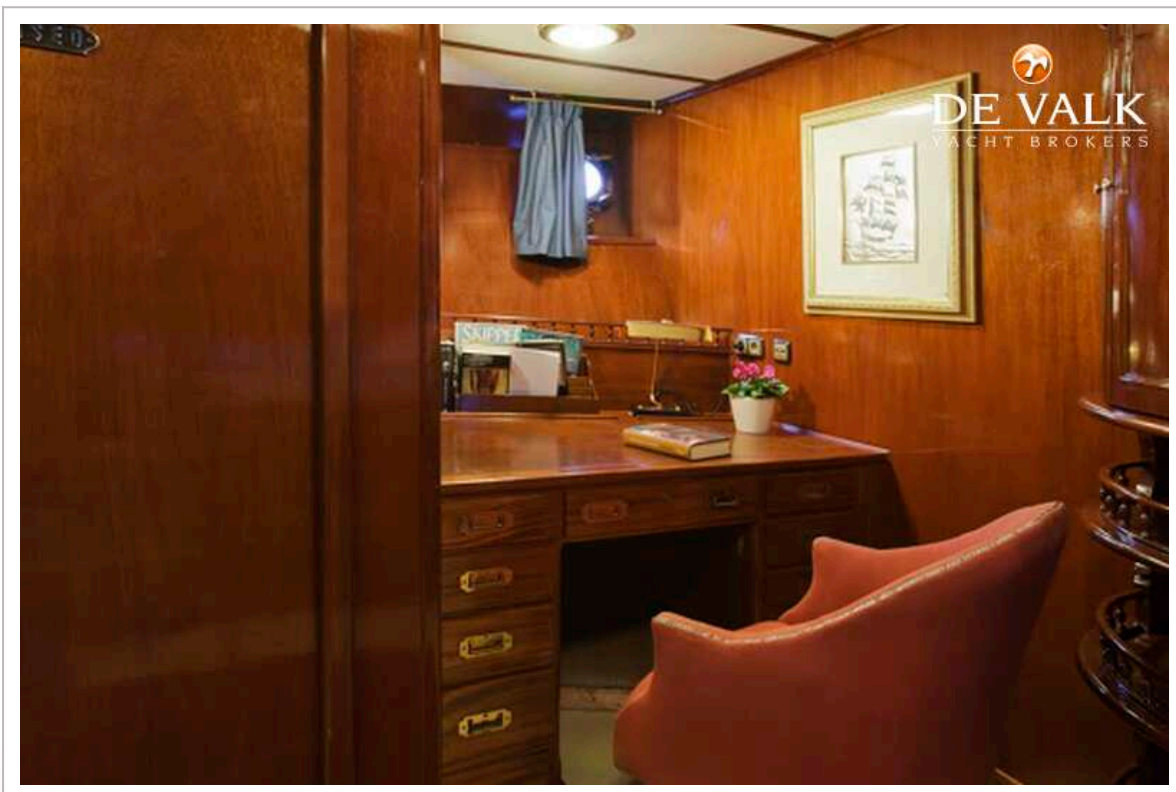
# YARROW & CO. MOTORSAILER 34M



# YARROW & CO. MOTORSAILER 34M



# YARROW & CO. MOTORSAILER 34M



# YARROW & CO. MOTORSAILER 34M

