



DE VALK
YACHT BROKERS



HANSE 400



DE VALK
YACHT BROKERS

HANSE 400

BROKER'S COMMENTS

The Hanse 400 (2008) is a performance-oriented cruiser that blends German engineering with sleek design. Designed by Judel / Vrolijk & Co., a renowned naval architecture firm, is a yacht of a fast yet stable hull shape, offering excellent upwind performance. Yacht ideal for sailors looking for a yacht that's equally at home in regattas or extended family cruising.

Sofia Iliia-Salvanou

SPECIFICATIONS

Dimensions	12.10 x 4.04 x 1.70 (m)	Builder	HANSE
Built	2008	Cabins	3
Material	GRP	Berths	7
Engine(s)	1 x YANMAR 39BHP diesel	Hp/Kw	45.00 (hp), 33.12 (kw)
Asking price	€ 92.500 (VAT Not paid)	Lying	elsewhere / Not at sales office

CONTACT

Sales office	De Valk Corfu	Telephone	(+30) 6948681503
Address	New Port of Corfu, near Gouvia Marina 490 83 Corfu GR	E-mail	corfu@devalk.nl

DISCLAIMER

These particulars are given in good faith as supplied but cannot be guaranteed.



HANSE 400

GENERAL

Model	HANSE 400
Type	sailing yacht
LOA (m)	12,10
Beam (m)	4,04
Draft (m)	1,70
Year built	2008
Builder	HANSE
Country	Germany
Gross tonnage	20
Hull material	GRP
Antifouling (year)	2025 JOTUN
Fuel tank (litre)	yes
Freshwater tank (litre)	200
Blackwater tank (litre)	80 (2 X 40)
Wheel steering	Foldable

ACCOMMODATION

Cabins	3
Berths	7
Layout	3 CABINS & 2 HEADS
Saloon	yes
Heating	WEBASTO
Air-conditioning	NEW
Dinette	yes
Convertible berth	yes
Opening door to cockpit	yes
Opening door to aft deck	yes
Galley	yes
Countertop	yes
Sink	yes



Cooker	yes
Oven	yes
Fridge	yes
Freezer	yes
Hot water system	yes
Coffee maker	yes
Crockery	yes
Owners cabin	double bed
Wardrobe	yes
Bathroom	en suite
Toilet	en suite
Toilet system	manual
Wash basin	in the bathroom
Shower	en suite
Guest cabin 1	double bed
Wardrobe	yes
Bathroom	separate
Toilet	separate
Toilet system	manual
Wash basin	in the bathroom
Shower	separate
Guest cabin 2	double bed
Wardrobe	yes
Bathroom	separate
Toilet	separate
Toilet system	manual
Wash basin	in the bathroom
Shower	separate

MACHINERY

No of engines	1
---------------	---



HANSE 400

Make	YANMAR
Type	39BHP
HP	45
kW	33.12
Fuel	diesel
Drive	sail-drive
Bowthruster	No
Propeller type	folding
Electric bilge pump	yes
Generator	NEW
Batteries	NEW 2025 VICTRON 220 X 3
Start battery	New changed on July 2025
Service battery	New changed on July 2025
Battery monitor	yes
Battery charger	yes
Inverter	yes
Solar panel	yes
Shorepower	yes
Watermaker	yes

NAVIGATION

Compass	yes
Depth sounder	RAYMARINE
Windset	RAYMARINE
VHF	SIMRAD RD68
Autopilot	RAYMARINE. Needs repair
Plotter/GPS	RAYMARINE
EPIRB	No
Navigation lights	yes

EQUIPMENT



Sprayhood	yes
Bimini	yes
Cockpit cushions	yes
Cockpit table	yes
Gangway	yes
Anchor	17
Anchor chain	75 m
Windlass	Lofrans Cayman 88 / maintenance done July 2025
Dinghy	yes
Outboard	TOHATSU 2,3
Sea railing	yes
Life raft	2022
Lifejackets	yes
Radar reflector	yes
Fenders	yes
Mooring lines	yes
Surround Sound System	PIONEER
Fire extinguisher	yes

RIGGING

Rigging	yes
Material mast	aluminium
Mainsail	2021
Mainsail cover	yes
Fully battened mainsail	yes
Genoa	Self tailing, 2021



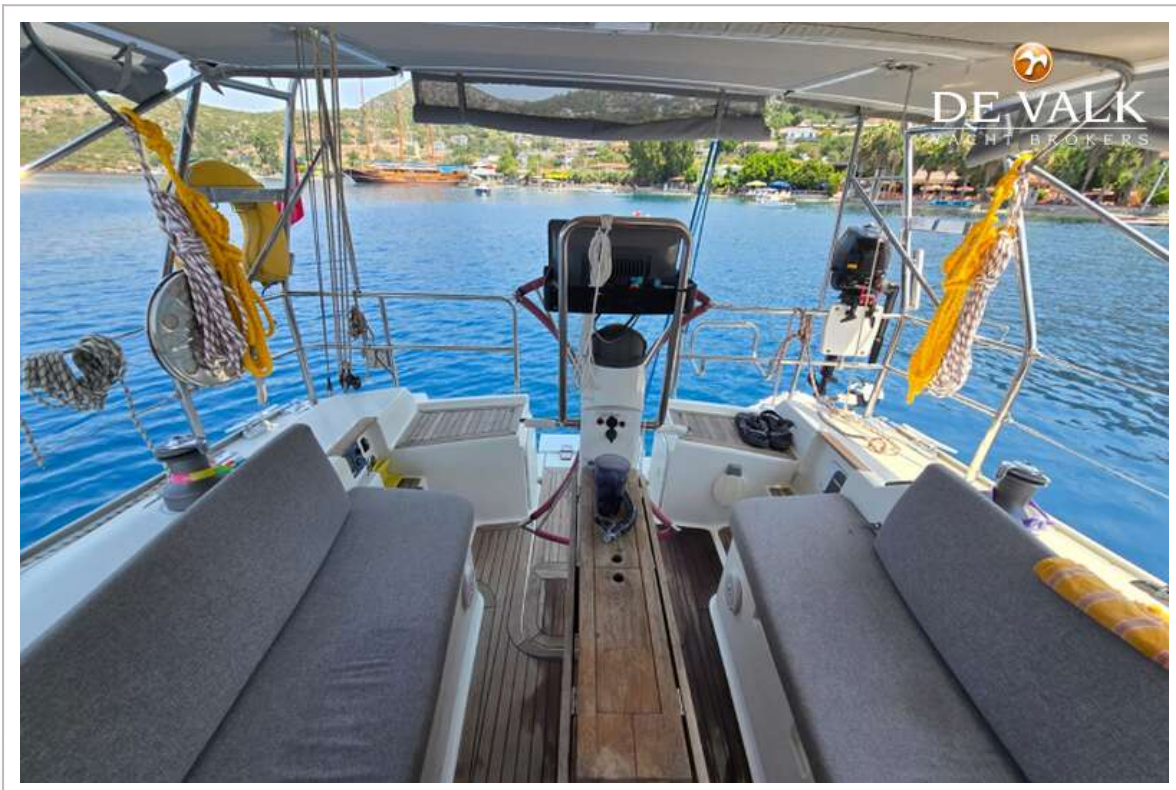
HANSE 400



HANSE 400



HANSE 400



HANSE 400



HANSE 400



HANSE 400



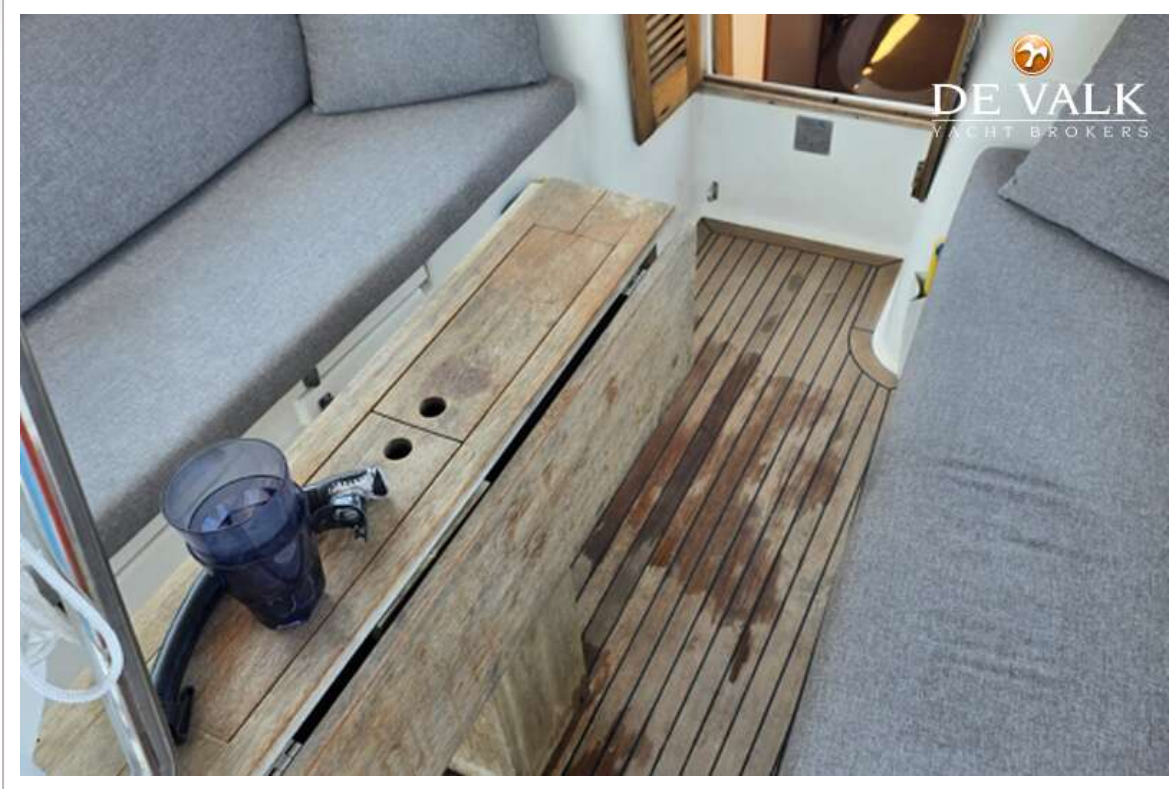
HANSE 400



HANSE 400



HANSE 400



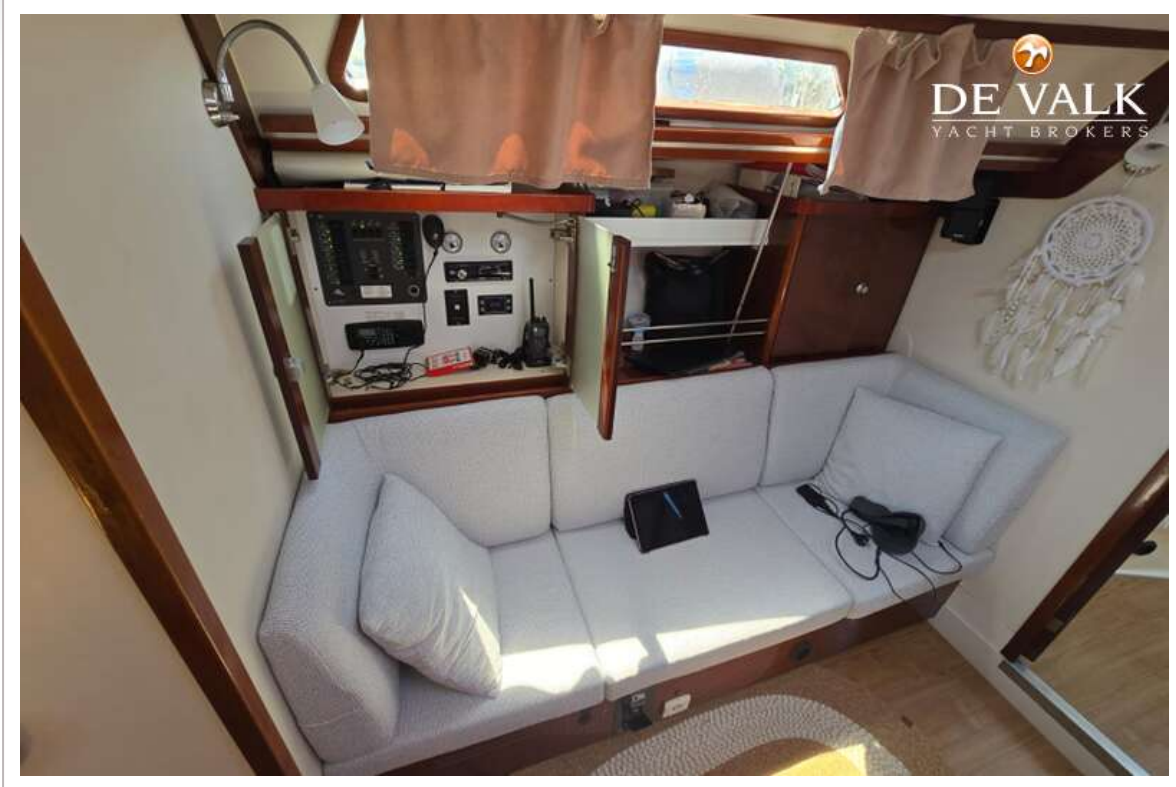
HANSE 400



HANSE 400



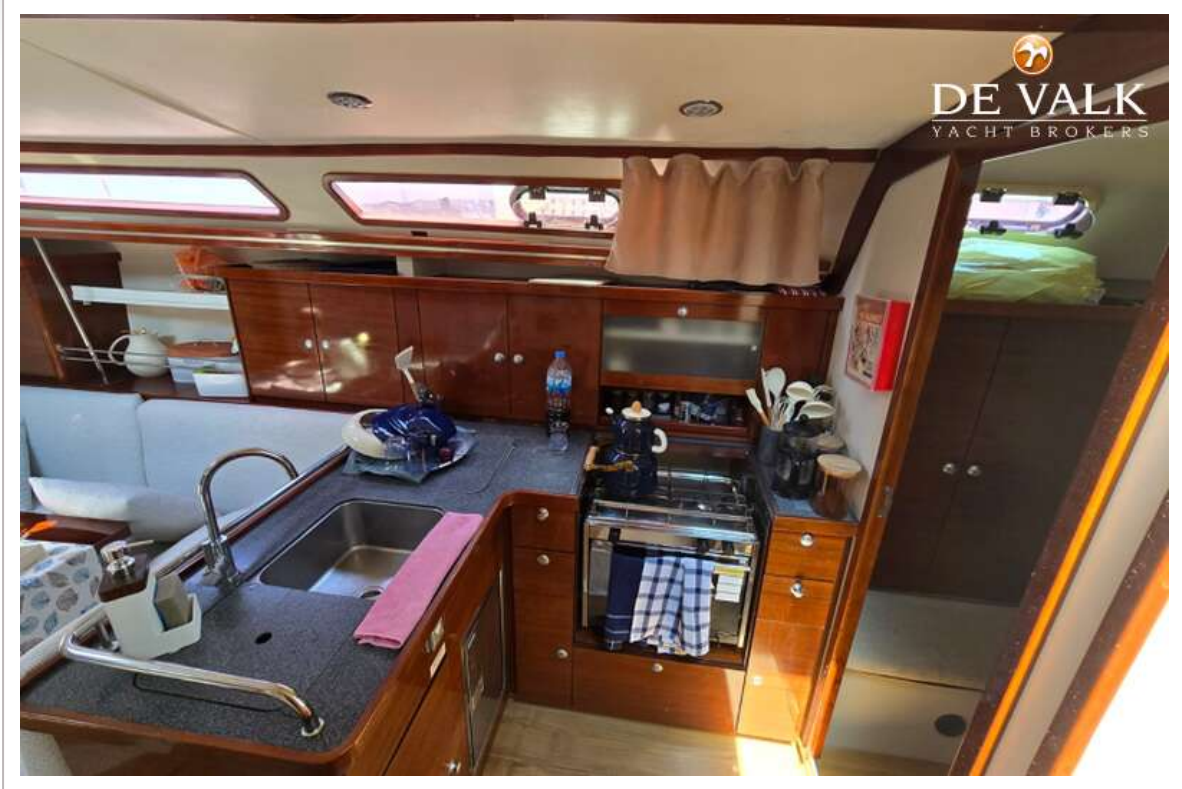
HANSE 400



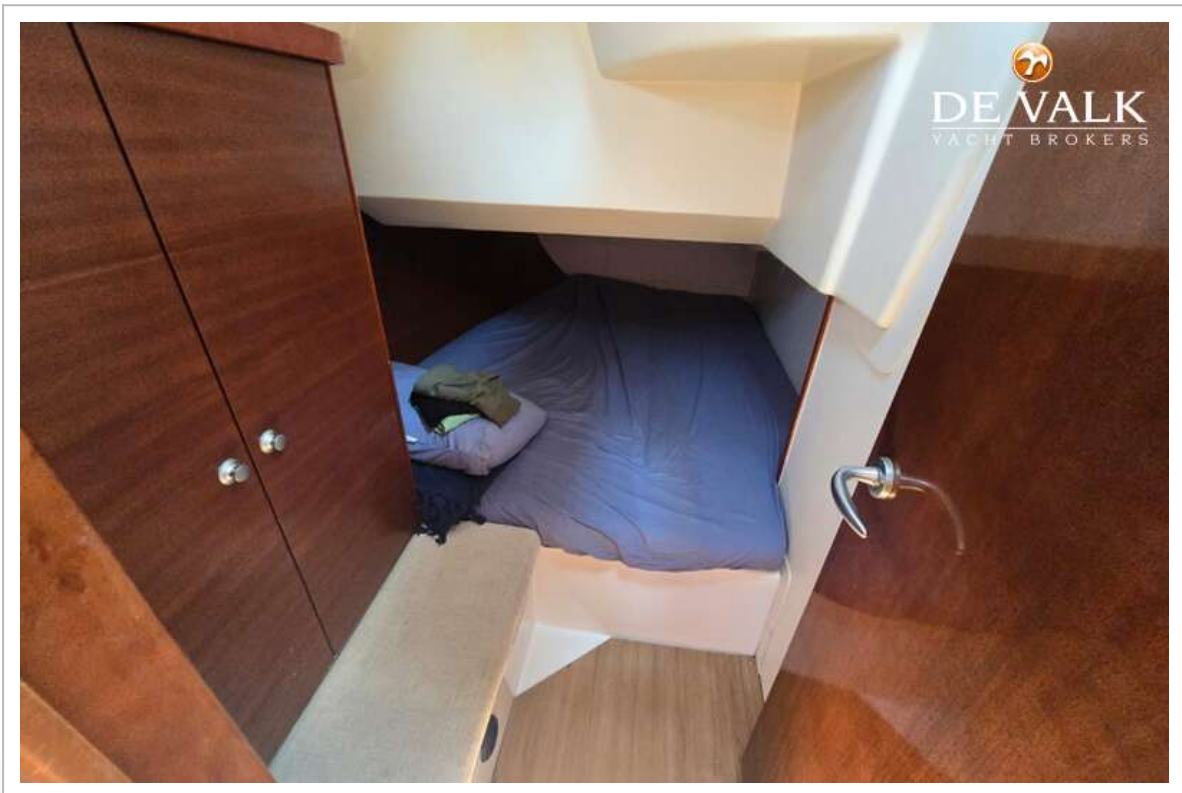
HANSE 400



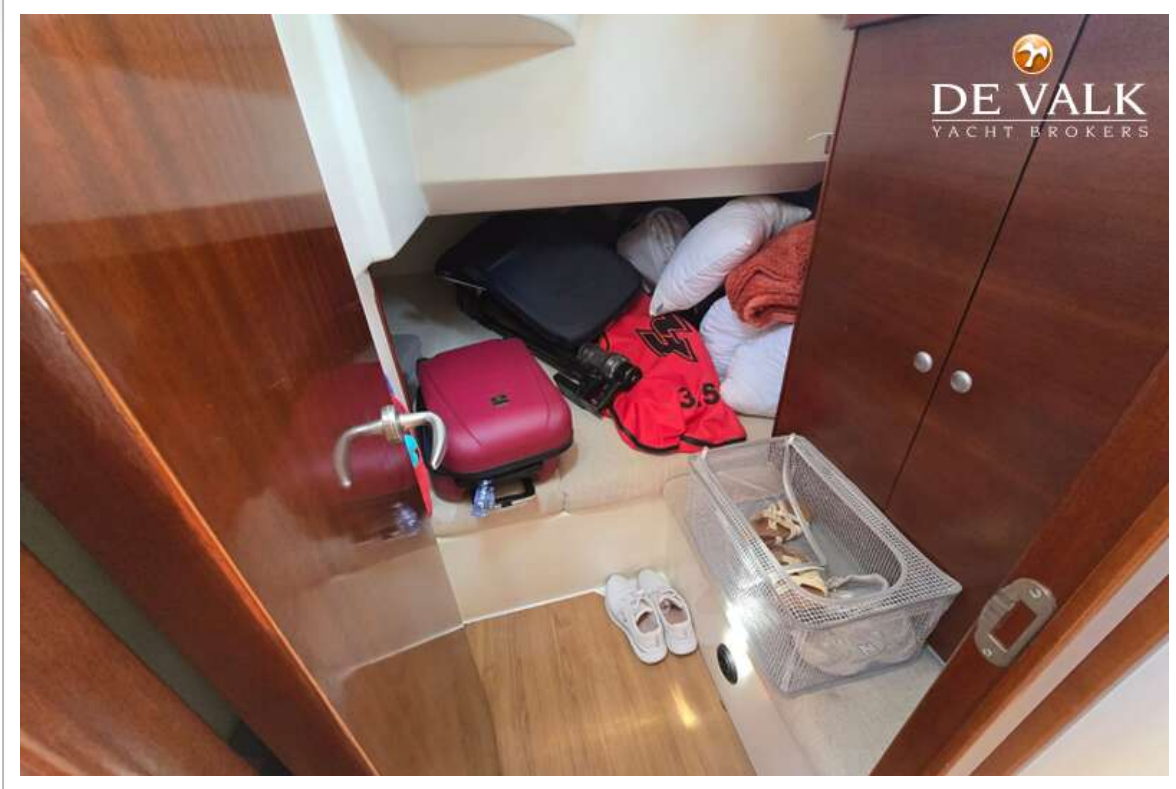
HANSE 400



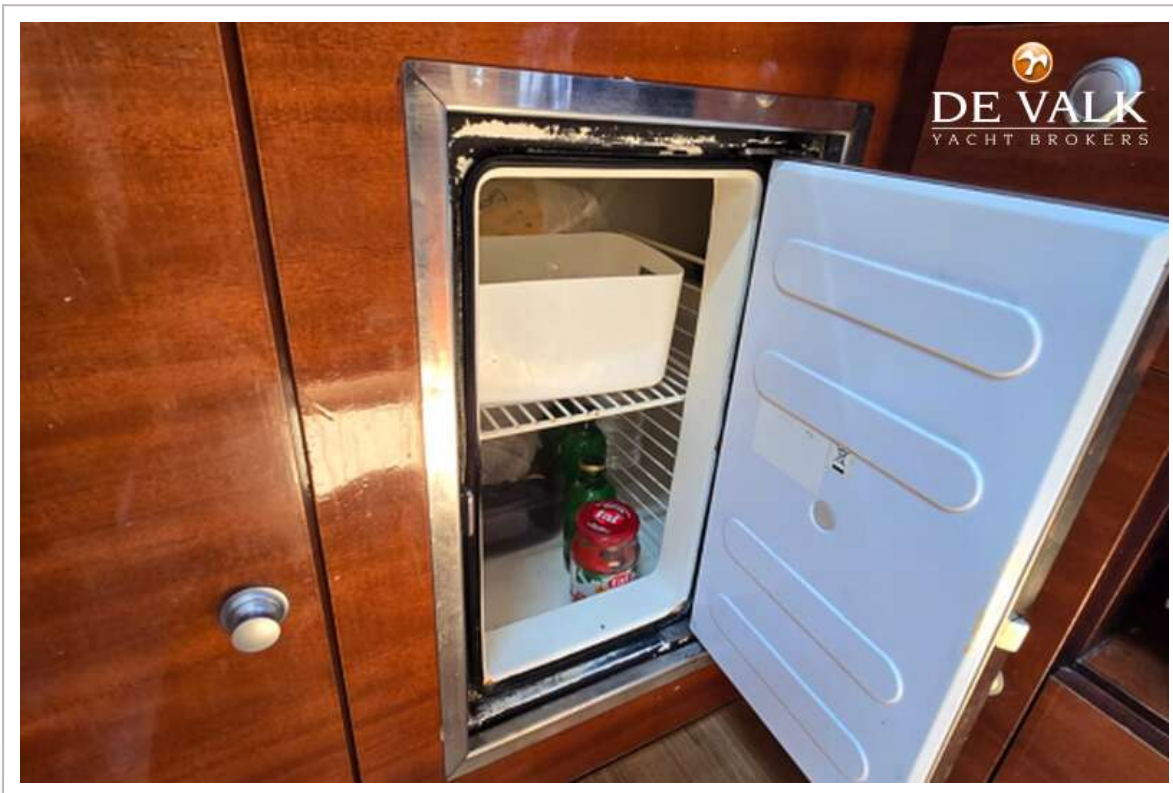
HANSE 400



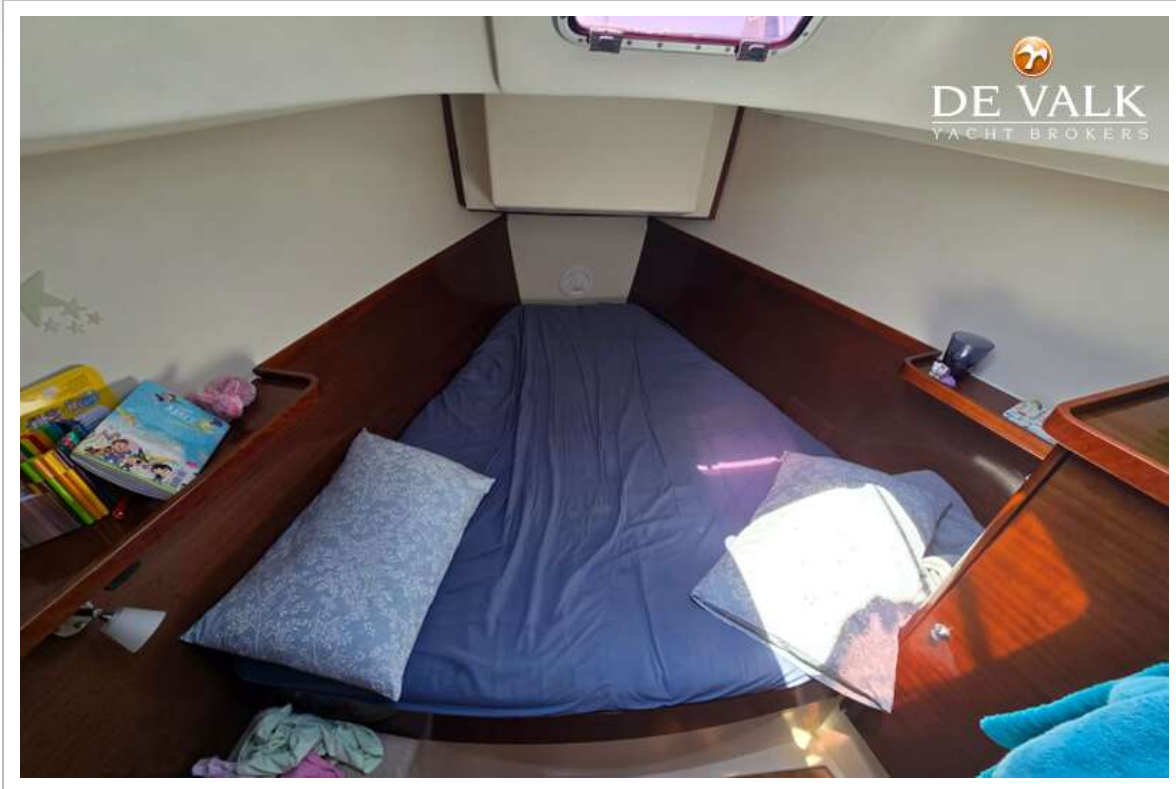
HANSE 400



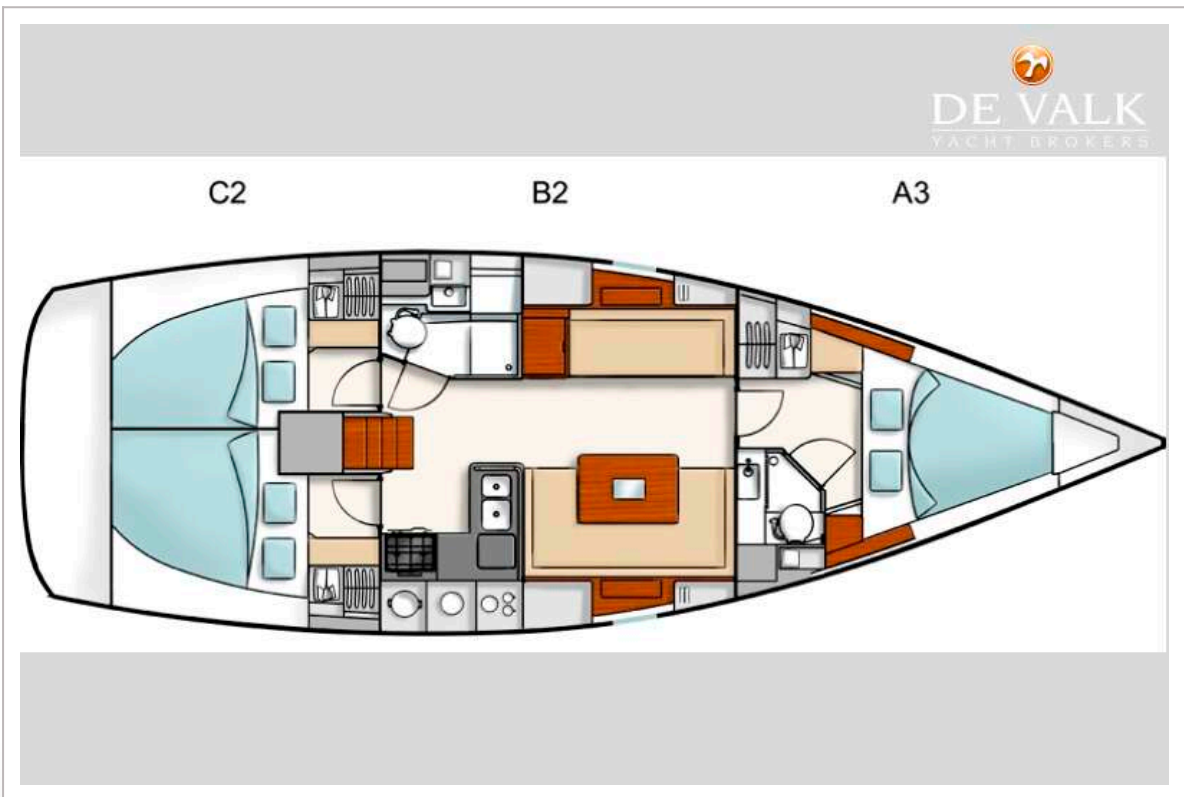
HANSE 400



HANSE 400



HANSE 400



HANSE 400



HANSE 400

