



DE VALK
YACHT BROKERS

GRAND BANKS 32



DE VALK
YACHT BROKERS

BROKERAGE | CHARTER | BERTHS | FINANCE | INSURANCE | YACHT MANAGEMENT

BROKER'S COMMENTS

The classic Grand Banks 32, a timeless pocket trawler renowned for her charm, practicality and build quality. Grand Banks boasts solid teak craftsmanship, wide walkaround decks, and a spacious flybridge for commanding views. Inside, you'll find a warm salon with traditional joinery, a functional galley, cozy dinette, and comfortable cabin with ample storage. No teak decks and steel tanks to worry about. Options like fun, dependability, comfort, style and quality are included. This iconic Trawler yacht blends vintage elegance with proven performance, a true nautical treasure.

Marc Weijenberg

SPECIFICATIONS

Dimensions	9.73 x 3.50 x 1.15 (m)	Builder	American Marine Limited
Built	1977	Cabins	1
Material	GRP	Berths	4
Engine(s)	1 x Ford Lehman 2715E diesel	Hp/Kw	120.00 (hp), 88.32 (kw)
Asking price	sold (VAT)	Lying	The Netherlands

CONTACT

Sales office	De Valk Thuishaven	Telephone	+31 35 5829042
Address	Peperstraat 7 1411 PX Naarden NL	E-mail	thuishaven@devalk.nl

DISCLAIMER

These particulars are given in good faith as supplied but cannot be guaranteed.



GENERAL

Model	GRAND BANKS 32
Type	motor yacht
LOA (m)	9,73
Beam (m)	3,50
Draft (m)	1,15
Air draft (m)	6,00
Air draft min (m)	3,50
Headroom (m)	1,95
Year built	1977
Builder	American Marine Limited
Country	Singapore
Designer	Kenneth Smith
Displacement (t)	8,5
CE norm	NA
Hull material	GRP
Hull colour	white
Hull shape	hard chine
Superstructure material	GRP
Rubbing strake	yes
Deck material	GRP
Deck finish	non-skid paint
Cockpit deck finish	teak (vaccum glued 2015)
Dorades	1 x for bathroom
Window frame	wood
Deckhatch	Gebo (2012)
Flybridge	With two benches including cushions, anti-slip paint finish and enough space extra seating/table et cetera.
Flybridge cover	Grey (2024)
Mast can be lowered	manual
Steadying sail with mast	brown (with cover)
Fuel tank (litre)	polyethylene 2 x 442 (2008)



Fuel daytank (litre)	polyethylene 60 (2008) + electric pump
Level indicator (daytank)	(2023)
Freshwater tank (litre)	polyethylene 410
Level indicator (freshwater)	yes
Blackwater tank (litre)	(none)
Wheel steering	yes
Inside helm position	cable steering
Flybridge helm position	cable steering
Emergency tiller	yes
Extra info	Teak decks removed and epoxy resealed & painted (2015)
Extra info	2 x Movable two-person benchseat/storageboxes on the aft deck. Ample mooring cleats around for secure mooring.
Extra info	Lots of windows (layered) in the pilothouse/salon for extra light and ventilation. Some of them sliding (including mosquito-screens. Forward centre window opens also.

ACCOMMODATION

Cabins	1
Berths	4
Interior	teak
Floor	teak
Pilot house/deck saloon	with practically 360 degree view of the surroundings.
Headroom saloon (m)	1,95
Heating	diesel ducted hot air Comfort Products 5kW (2023)
Convertible berth	Portside: 1,88 x 0,52 m. Starboard: 1,93 x 0,52/0,95 m
Opening door to aft deck	yes
Galley	headroom: 1,95 m
Countertop	Duropol (2016)
Sink	stainless steel 1 x
Cooker	calor gas Techimpex 3 burner (2021)
Oven	calor gas Techimpex (2021)
Gas alarm	yes



Fridge	Waeco Coolmatic (12v) with freezer compartment
Hot water system	220V + engine Isotemp 40 liter
Water pressure system	electrical
Crockery	yes
Owners cabin	v-bed
Bed length (m)	2,05 x 2,00m, headroom : 1,85 m,
Wardrobe	hanging and shelves
Bathroom	en suite
Toilet	en suite
Toilet system	manual R&M (2023)
Wash basin	in the bathroom
Shower	en suite
Extra info	Headroom bathroom 1,85 mtr
Extra info	Frontcabin is insulated

MACHINERY

No of engines	1
Make	Ford Lehman
Type	2715E
HP	120
kW	88.32
Fuel	diesel
Year installed	1977
Maximum speed (kn)	7,5
Cruising speed (kn)	6
Consumption (l/hr)	6
Engine cooling system	freshwater heat exchanger (2015)
Drive	shaft
Shaft seal	Volvo Seal
Engine controls	bowden cable
Gearbox	hydraulic



Bowthruster	electric Vetus 75kgf (12v)
Exhaust	watercooled
Propeller type	fixed
Propeller blades	4
Propeller shaft material	stainless steel (2010)
Shaft lubrication	water
Electric bilge pump	yes
Electrical installation	12v/220v
Start battery	1 x 140 ah (2019)
Service battery	2 x AGM 180 Ah (2023)
Bowthruster battery	1 x 180 Ah
Battery monitor	Victron Multi Control
Battery charger/inverter	Victron Multi Compact 12v/2000watt/80amp (2023)
Diode battery combiners	yes
Shorepower	with cable
Extra info	Engine has been serviced in spring 2025. Heavy duty alternator.
Extra info	All through-hull fittings and seacocks renewed in 2015
Extra info	BEP Marine fumes detector

NAVIGATION

Compass	Ritchie
Multi control display	Navman Multi 3100 on flybridge
Depth sounder/log	Navman 3100
VHF	Navman 7110 with flybridge handset
Autopilot	Navman Pilot 3380 plus 3100 repeater
Plotter/GPS	Navman Tracker 5605
Navigation lights	yes

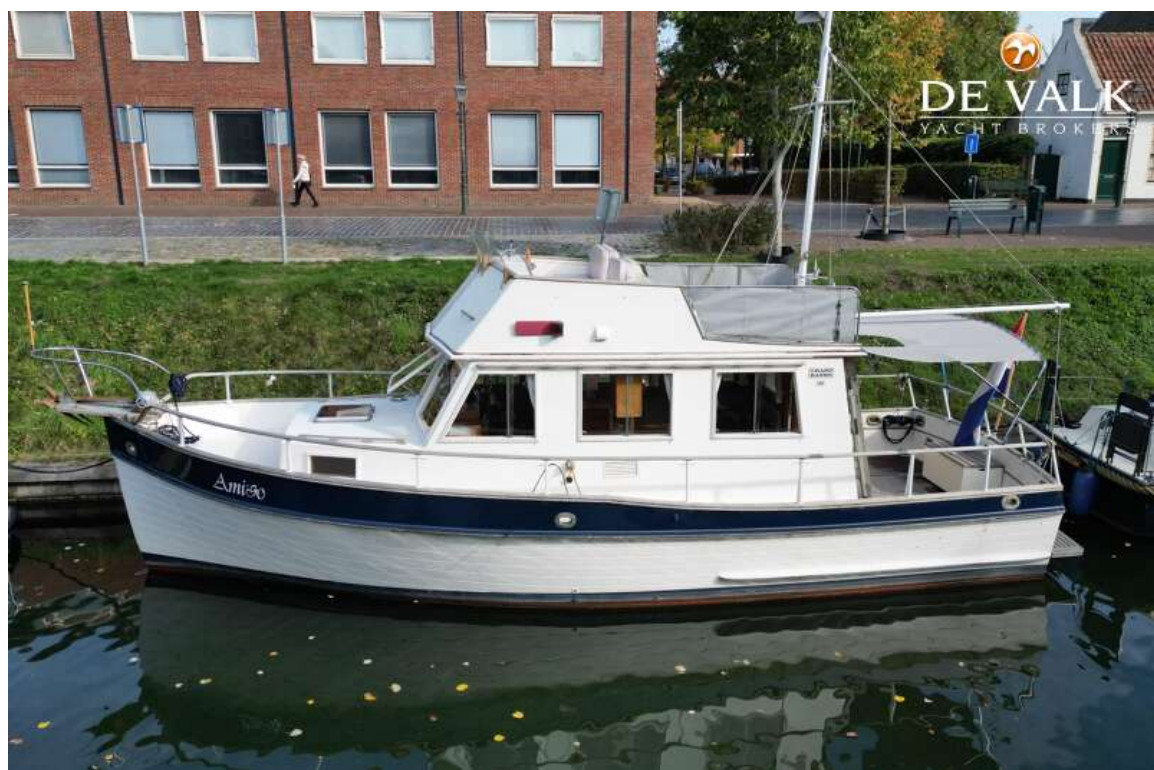
EQUIPMENT

Cockpit cover	Grey (2024)
----------------------	-------------



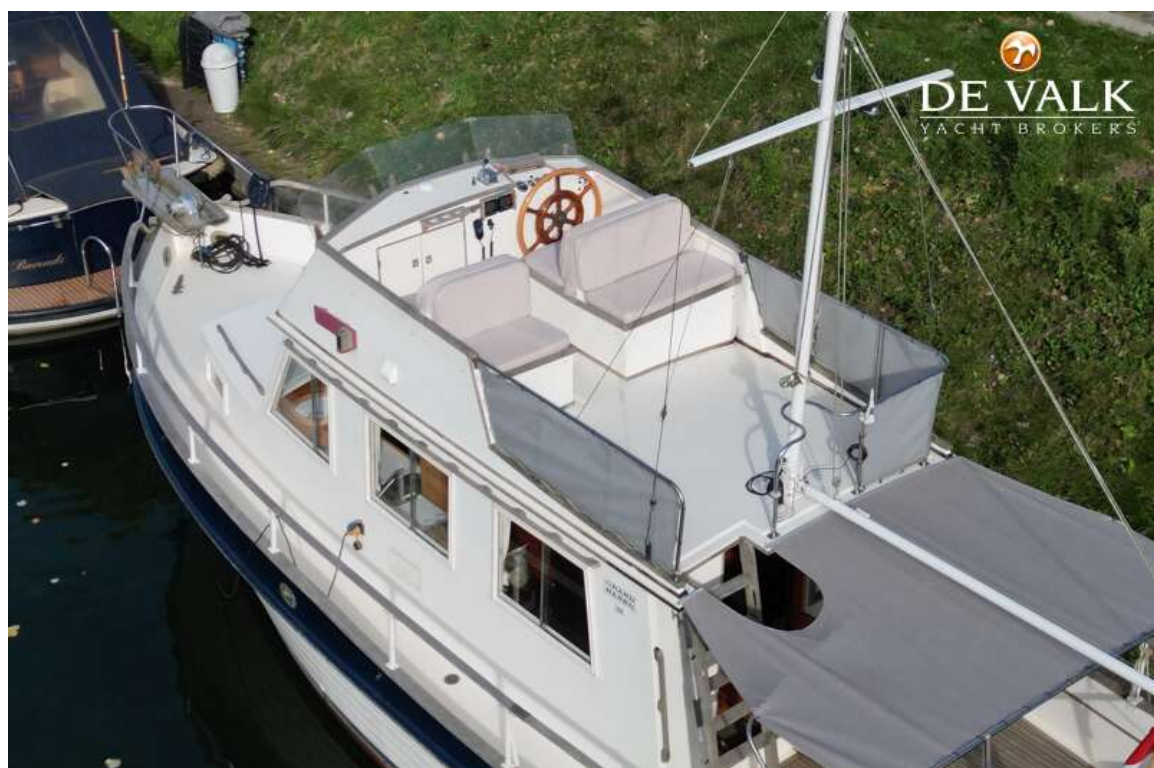
Bathing platform	yes
Boarding ladder	stainless steel
Anchor	Danforth 20 Kg
Anchor chain	Approx. 50 mtr
Anchor 2	Danforth 15 Kg
Windlass	manual Vetus
Deck wash	yes
Outboard	Suzuki DF 2.5 (4-stroke)
Sea railing	teak
Grab rail (superstructure)	teak
Railing side opening gates	2 x
Pushpit	yes
Pulpit	yes
Lifejackets	4 x
Lifebuoy	1 x
Wiper	2 x with wash
Horn	air pressure
Radar reflector	yes
Fenders	yes
Mooring lines	yes
Spare parts	yes
Tools	yes
Radio-cd player	Pioneer
Speakers in salon	4 x
Fire extinguisher	2 x (expired)
Auto extinguisher system	Mabo





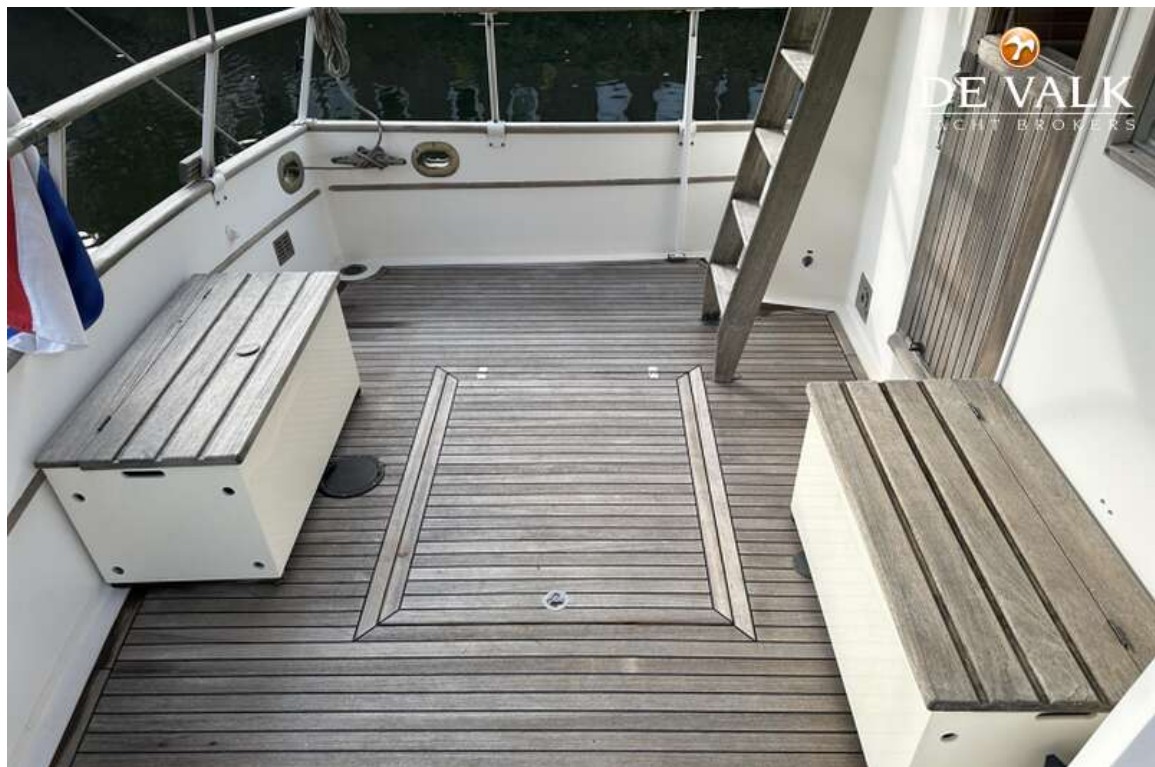


GRAND BANKS 32





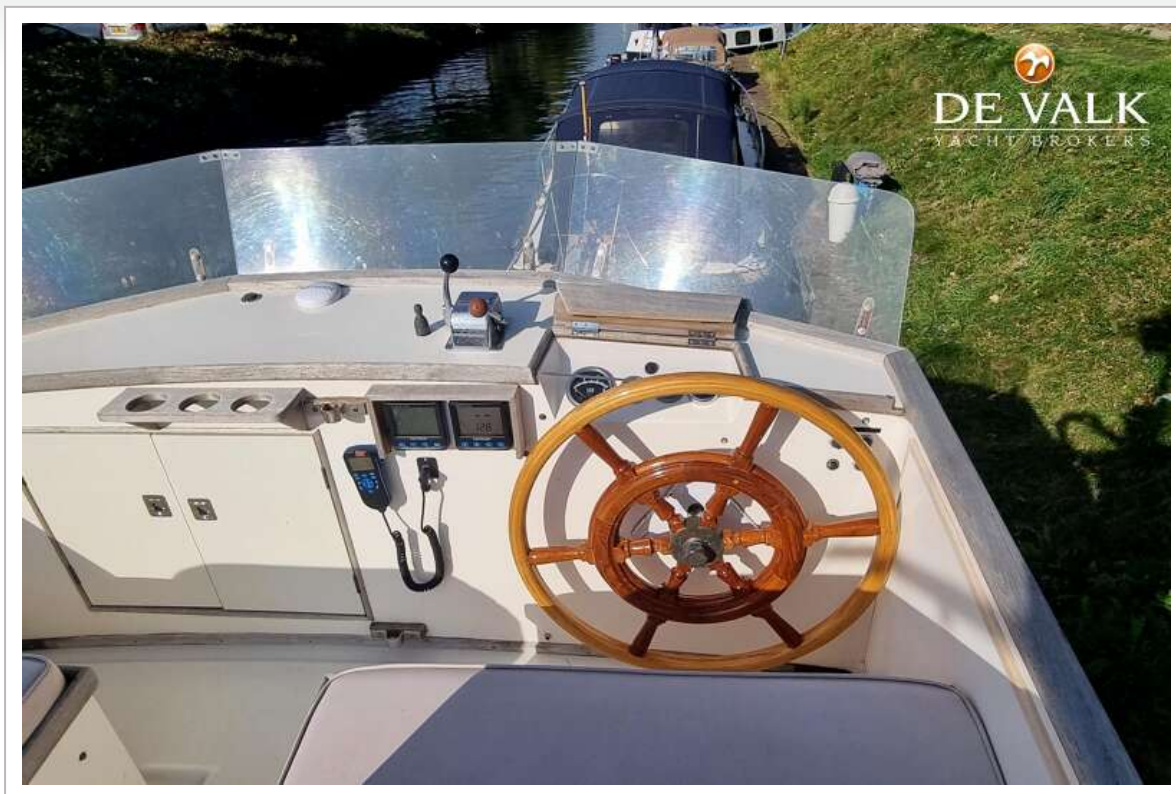
GRAND BANKS 32













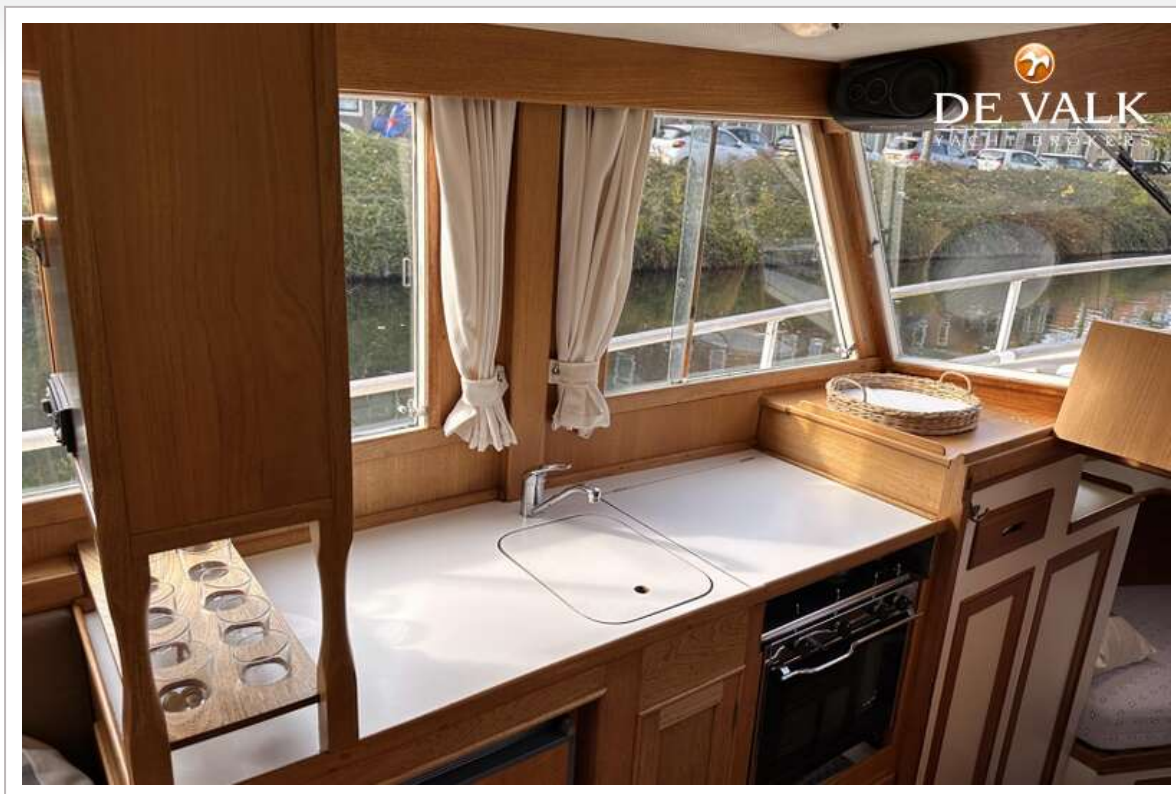
GRAND BANKS 32



GRAND BANKS 32



GRAND BANKS 32



GRAND BANKS 32





GRAND BANKS 32

