



DE VALK  
YACHT BROKERS

## SEA RAY 400 EXPRESS CRUISER



DE VALK  
YACHT BROKERS

# SEA RAY 400 EXPRESS CRUISER

## BROKER'S COMMENTS

The 400 EC offers two full-staterooms, a comfortable master forward with an island berth, and a mid-ship guest/cabin that's cleverly separated via a pocket door. The galley, salon, etc., are well laid out for extended cruising. With twin inboard engines, it cruises decently and has reasonable top speed 23 knots.

*Sofia Ilia-Salvanou*

## SPECIFICATIONS

<b>Dimensions</b>	12.30 x 3.99 x 1.05 (m)	<b>Builder</b>	
<b>Built</b>	1992	<b>Cabins</b>	2
<b>Material</b>	GRP	<b>Berths</b>	4
<b>Engine(s)</b>	2 x CATERPILLAR 3116DI diesel	<b>Hp/Kw</b>	2 x 300.00 (hp), 220.80 (kw)
<b>Asking price</b>	on request (VAT Paid)	<b>Lying</b>	elsewhere / Not at sales office

## CONTACT

<b>Sales office</b>	De Valk Corfu	<b>Telephone</b>	(+30) 266 111 8095
<b>Address</b>	New Port of Corfu, near Gouvia Marina 490 83 Corfu GR	<b>E-mail</b>	corfu@devalk.nl

## DISCLAIMER

These particulars are given in good faith as supplied but cannot be guaranteed.



# SEA RAY 400 EXPRESS CRUISER

## GENERAL

Model	SEA RAY 400 EXPRESS CRUISER
Type	motor yacht
LOA (m)	12,30
Beam (m)	3,99
Draft (m)	1,05
Year built	1992
Country	U.S.A.
Gross tonnage	15
Net tonnage	4
Hull material	GRP
Hull colour	white
Deck material	GRP
Deck finish	non-skid paint
Cockpit deck finish	non-skid paint
Deckhatch	yes
Portholes	yes
Fuel tank (litre)	1135
Freshwater tank (litre)	380
Blackwater tank (litre)	115
Wheel steering	yes
Outside helm position	yes

## ACCOMMODATION

Cabins	2
Berths	4
Layout	2 cabins 2 Head
Saloon	yes
Navigation center	yes
Dinette	yes
Opening door to aft deck	yes



# SEA RAY 400 EXPRESS CRUISER

Galley	yes
Countertop	yes
Sink	yes
Fridge	yes
Hot water system	yes
Owners cabin	double bed
Wardrobe	yes
Bathroom	separate
Toilet	separate
Wash basin	in the bathroom
Shower	separate
Guest cabin 1	bunk bed
Wardrobe	yes
Bathroom	separate
Toilet	separate
Wash basin	in the bathroom
Shower	separate

## MACHINERY

No of engines	2
Make	CATERPILLAR
Type	3116DI
HP	300
kW	220.80
Fuel	diesel
Maximum speed (kn)	23
Cruising speed (kn)	18
Drive	shaft
Propeller type	fixed
Electric bilge pump	yes
Batteries	yes



# SEA RAY 400 EXPRESS CRUISER

Start battery	yes
Service battery	yes
Battery charger	yes
Solar panel	yes
Shorepower	yes

## NAVIGATION

Compass	yes
Depth sounder	yes
VHF	yes

## EQUIPMENT

Cockpit cover	yes
Bimini	yes
Cockpit cushions	yes
Cockpit table	yes
Gangway	yes
Anchor	yes
Anchor chain	yes
Lifejackets	yes
Mooring lines	yes
Fire extinguisher	yes

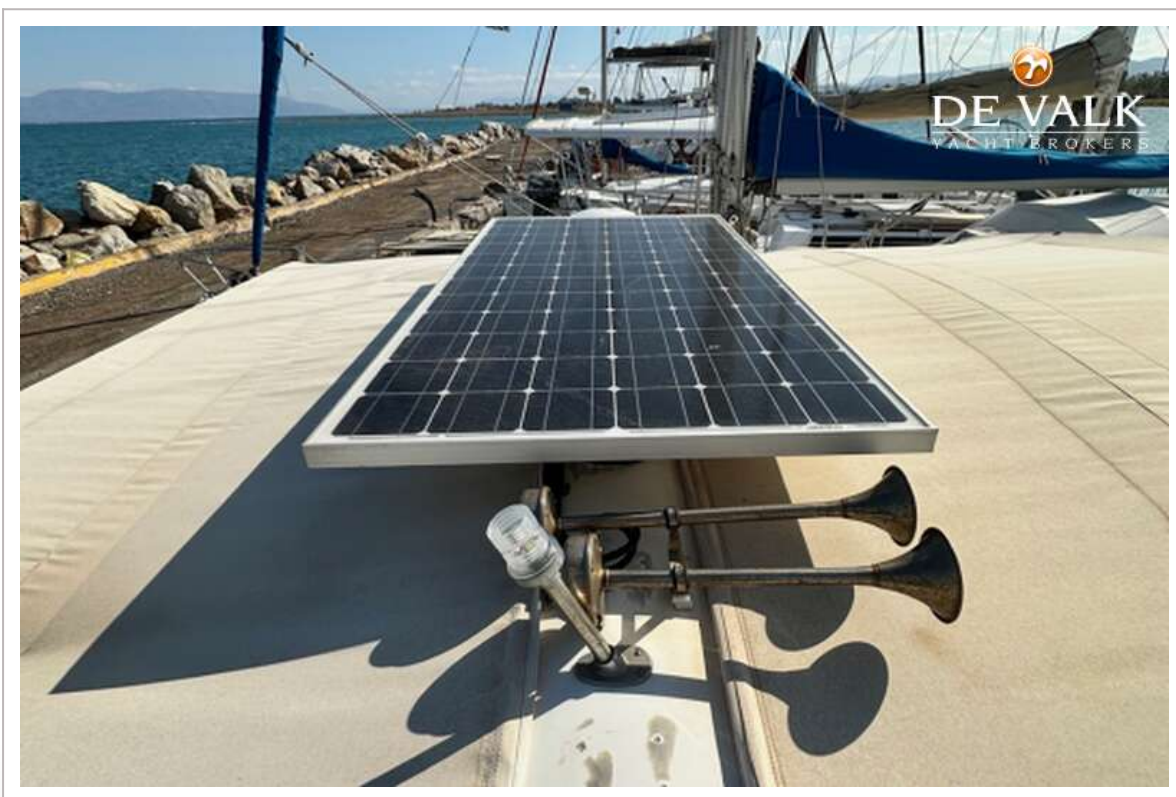




# SEA RAY 400 EXPRESS CRUISER



# SEA RAY 400 EXPRESS CRUISER





# SEA RAY 400 EXPRESS CRUISER

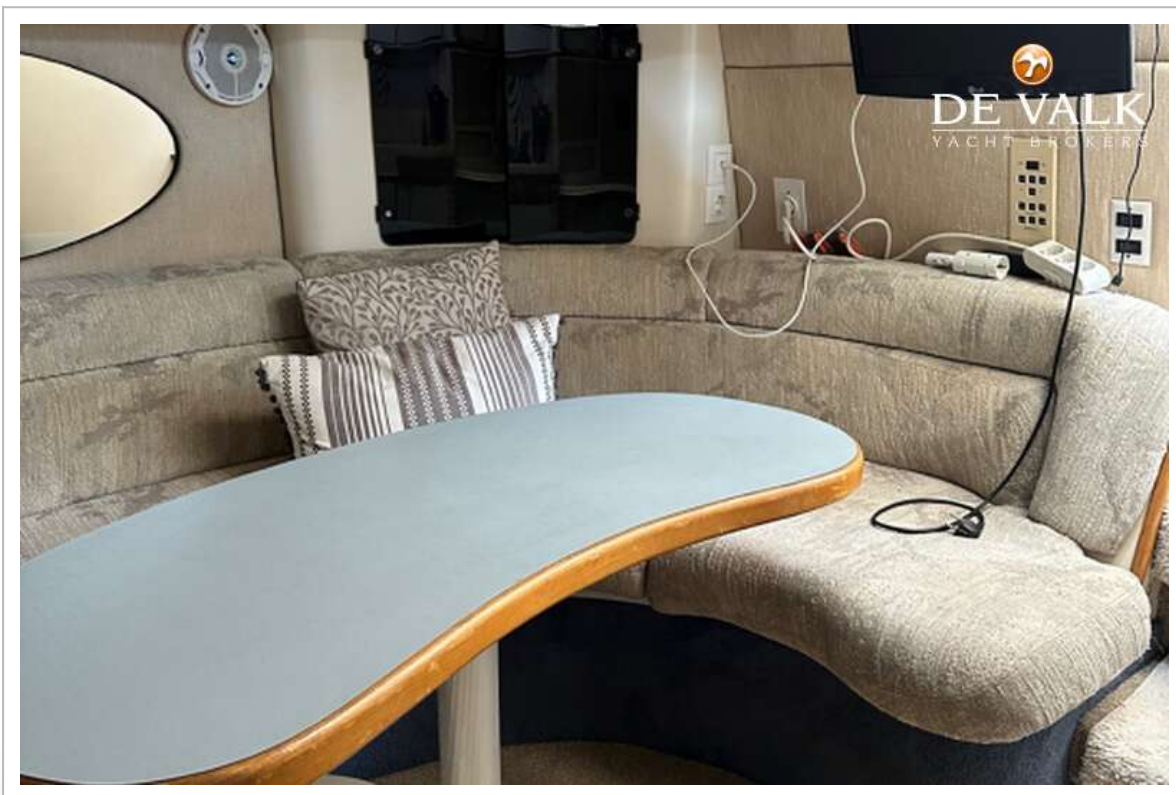




# SEA RAY 400 EXPRESS CRUISER



# SEA RAY 400 EXPRESS CRUISER





# SEA RAY 400 EXPRESS CRUISER



# SEA RAY 400 EXPRESS CRUISER





# SEA RAY 400 EXPRESS CRUISER



# SEA RAY 400 EXPRESS CRUISER

