



## ALMTRAWLER 1200

# ALMTRAWLER 1200

## BROKER'S COMMENTS

The Almtrawler 1200 (1992) is a robust Dutch-built steel motor yacht by Jachtbouw De Alm. With 13.65m length and 4.20m beam, she offers generous space, two cabins and seven berths. The warm oak interior with Iroko flooring adds coziness, while the flybridge is perfect for cruising. In 2022, the hull was fully sandblasted and resprayed, giving her a fresh look. An ideal cruiser for long voyages or relaxed weekends. Available for viewing at our sales marina in Loosdrecht.

**Mark Hesselmans**

## SPECIFICATIONS

<b>Dimensions</b>	13.65 x 4.20 x 1.45 (m)	<b>Builder</b>	Jachtbouw De Alm
<b>Built</b>	1992	<b>Cabins</b>	2
<b>Material</b>	Steel	<b>Berths</b>	7
<b>Engine(s)</b>	1 x Daf 825 diesel	<b>Hp/Kw</b>	158.00 (hp), 116.29 (kw)
<b>Asking price</b>	sold (VAT )	<b>Lying</b>	at sales office

## CONTACT

<b>Sales office</b>	De Valk Loosdrecht B.V.	<b>Telephone</b>	+31 (0)35 582 90 30
<b>Address</b>	't Breukeleveense Meentje 6 1231LM Loosdrecht / Wijdmeren NL	<b>E-mail</b>	loosdrecht@devalk.nl

## DISCLAIMER

These particulars are given in good faith as supplied but cannot be guaranteed.



# ALMTRAWLER 1200

## GENERAL

Model	ALMTRAWLER 1200
Type	motor yacht
LOA (m)	13,65
Beam (m)	4,20
Draft (m)	1,45
Air draft (m)	3,45
Air draft min (m)	7,15
Year built	1992
Builder	Jachtbouw De Alm
Country	The Netherlands
Hull material	steel
Hull colour	blue Marlin Blue (repainted in 2022)
Hull shape	hard chine
Superstructure material	steel
Rubbing strake	rubber
Deck material	steel
Deck finish	non-skid paint
Superstructure deck finish	paint Matterhorn White (repainted in 2022)
Cockpit deck finish	teak
Antifouling (year)	2022
Window frame	aluminium
Window material	tempered glass
Deckhatch	yes
Portholes	stainless steel 5x on each side
Flybridge	yes
Flybridge cockpit cover	yes
Radar arch	non collapsible 2022 Renewed
Steadying sail with mast	yes
Fuel tank (litre)	steel 1500 liter
Level indicator (fuel tank)	VDO



# ALMTRAWLER 1200

Freshwater tank (litre)	steel 2x 1100 liter
Level indicator (freshwater)	Vetus
Blackwater tank (litre)	250 liter
Level indicator (blackwater)	Vetus
Blackwater tank extraction	deck extraction
Wheel steering	hydraulic Hynautic
Inside helm position	yes
Flybridge helm position	hydraulic
More info on hull	Stripped in 2022 Fully sandblasted & primed Awlgrip paint syst
More info on paintwork	Fully repainted in 2022

## ACCOMMODATION

Cabins	2
Berths	7
Interior	oak
Floor	wood Iroko
Aft deck	yes
Headroom saloon (m)	2,00
Heating	central heating Maritime Booster
Aft Cabin	yes
Dinette	yes
Dinette to convert into berth	yes
Sliding door to cockpit	yes
Sliding door to aft deck	yes
Galley	yes
Countertop	plastic
Sink	stainless steel
Cooker	calor gas 3 pits Dometic HBG 3445
Extractor	yes
Gas alarm	Vetus
Fridge	Dometic



# ALMTRAWLER 1200

Freezer	Zanussi
Hot water system	220V + engine
Water pressure system	electrical DAB Eskybox mini 3 with a waterfilter Aquamar WS-300M
Owners cabin	double bed + single bed
Bed length (m)	2,00
Wardrobe	shelves
Toilet	en suite
Toilet system	electric
Wash basin	at the toilet
Guest cabin 1	double bed
Bed length (m)	2,00
Wardrobe	hanging and shelves
Bathroom	shared
Toilet	shared
Toilet system	electric
Wash basin	in the bathroom
Shower	shared
Washing machine	Ariston
Flybridge	yes
Extra info	2024 Fitted with new curtains and mattresses (Vosco)

## MACHINERY

No of engines	1
Make	Daf
Type	825
HP	158
kW	116.29
Fuel	diesel
Maximum speed (kn)	8
Cruising speed (kn)	6



# ALMTRAWLER 1200

Engine hours	4750+/-
Engine cooling system	freshwater heat exchanger
Drive	shaft
Shaft seal	yes
Engine controls	bowden cable
Gearbox	hydraulic ZF Hurth
Bowthruster	electric Sidepower with remote control
Sternthruster	electric Sidepower with remote control
Exhaust	watercooled
Propeller type	fixed
Propeller shaft material	steel
Shaft lubrication	grease
Electric bilge pump	yes
Electrical installation	24V/230V
Start battery	2x VMF 230AH/20H
Service battery	4x VMF semi-traction 230Ah 12V
Battery monitor	Mastervolt DIS Easyview 5
Battery charger/inverter	Mastervolt Mass Combi 24V/3500W
Solar panel	2x
Diode battery combiners	yes
Shorepower	with cable

## NAVIGATION

Electric compass	Geonav 7 wide
Depth sounder/log	Humminbird LCR400
VHF	1x Sam Debeg 6348 VHF 1x Sailor Compact VHF RT2048
Rudder angle indicator	Vetus
GPS	Geonav 7 Wide
AIS transceiver	Em-Trak B400 AIS Class B
Camera	In engineroom and overlooking the swimmingplatform
Navigation lights	yes



# ALMTRAWLER 1200

## EQUIPMENT

Fixed windscreen	yes
Cockpit cushions	yes
Cockpit table	yes
Cockpit chairs	yes
Bathing platform	yes
Boarding ladder	stainless steel
Transom door	yes
Anchor	Mantus M2 29,5kg (2023)
Anchor chain	yes
Windlass	electrical Hydromec 24V (2024)
Deck wash	Jabsco 24V
Deck crane	electric
Sea railing	stainless steel
Grab rail (superstructure)	stainless steel
Railing side opening gates	yes
Wiper	3x Sea Crystal
Horn	air pressure
TV	Akai
Radio	Lenco





# ALMTRAWLER 1200





# ALMTRAWLER 1200



# ALMTRAWLER 1200

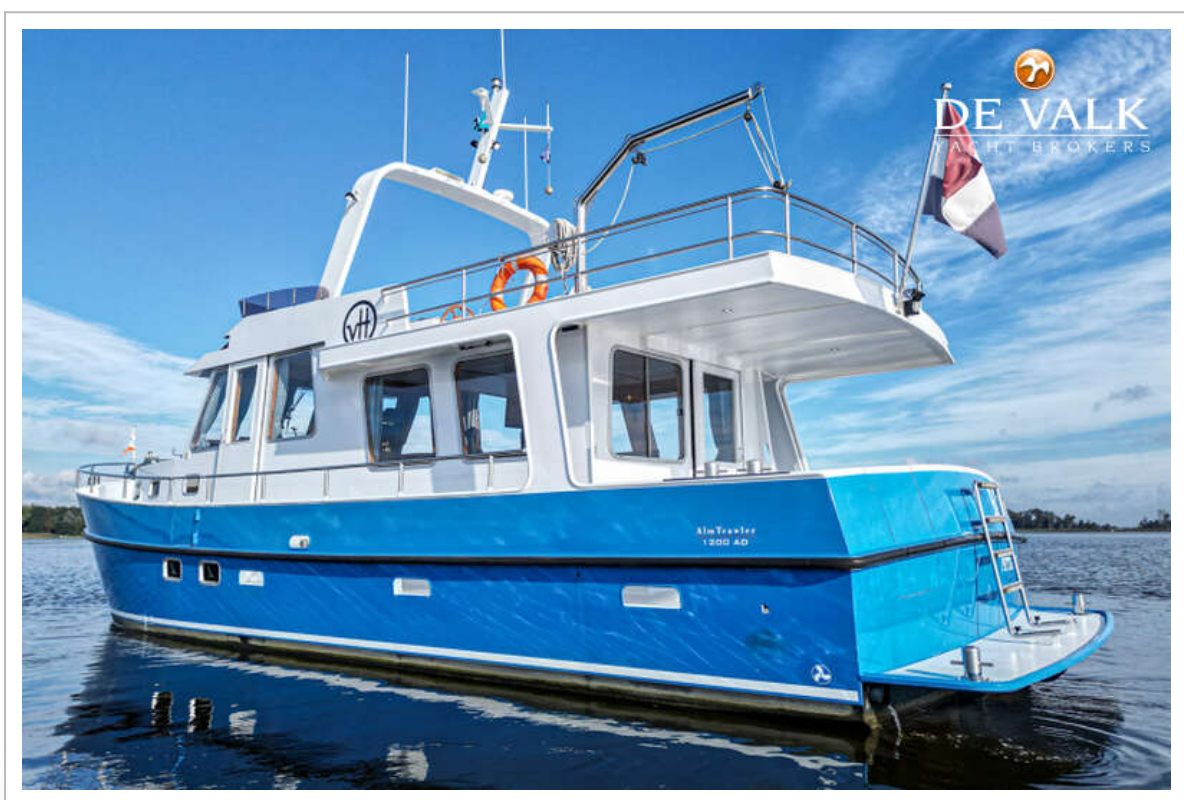




# ALMTRAWLER 1200



# ALMTRAWLER 1200





# ALMTRAWLER 1200



# ALMTRAWLER 1200





# ALMTRAWLER 1200

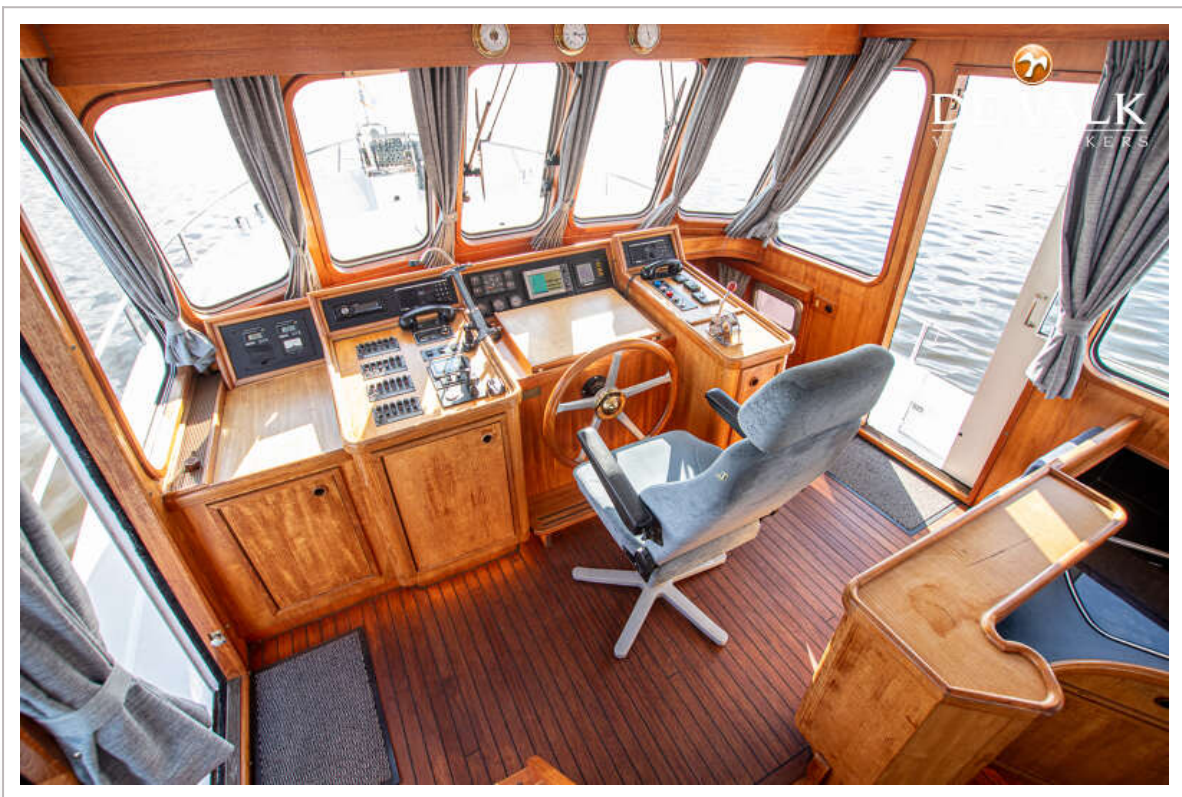


# ALMTRAWLER 1200



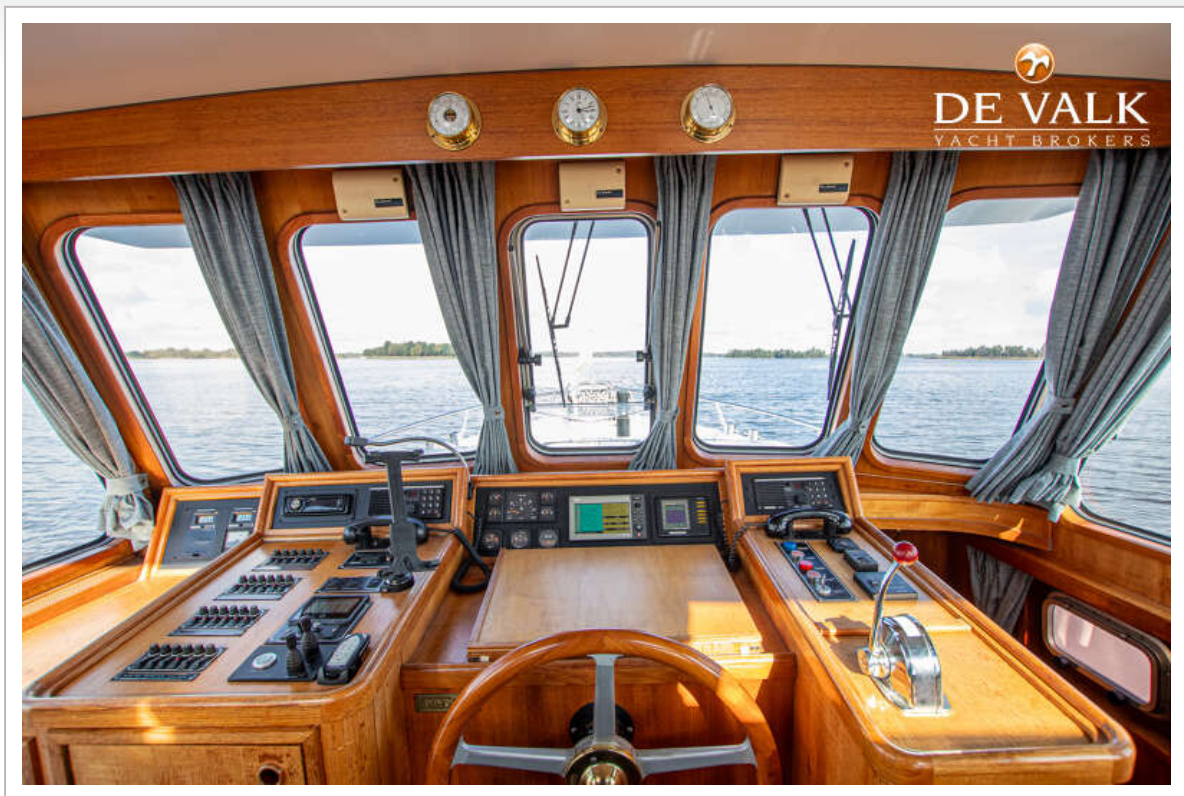


# ALMTRAWLER 1200





# ALMTRAWLER 1200

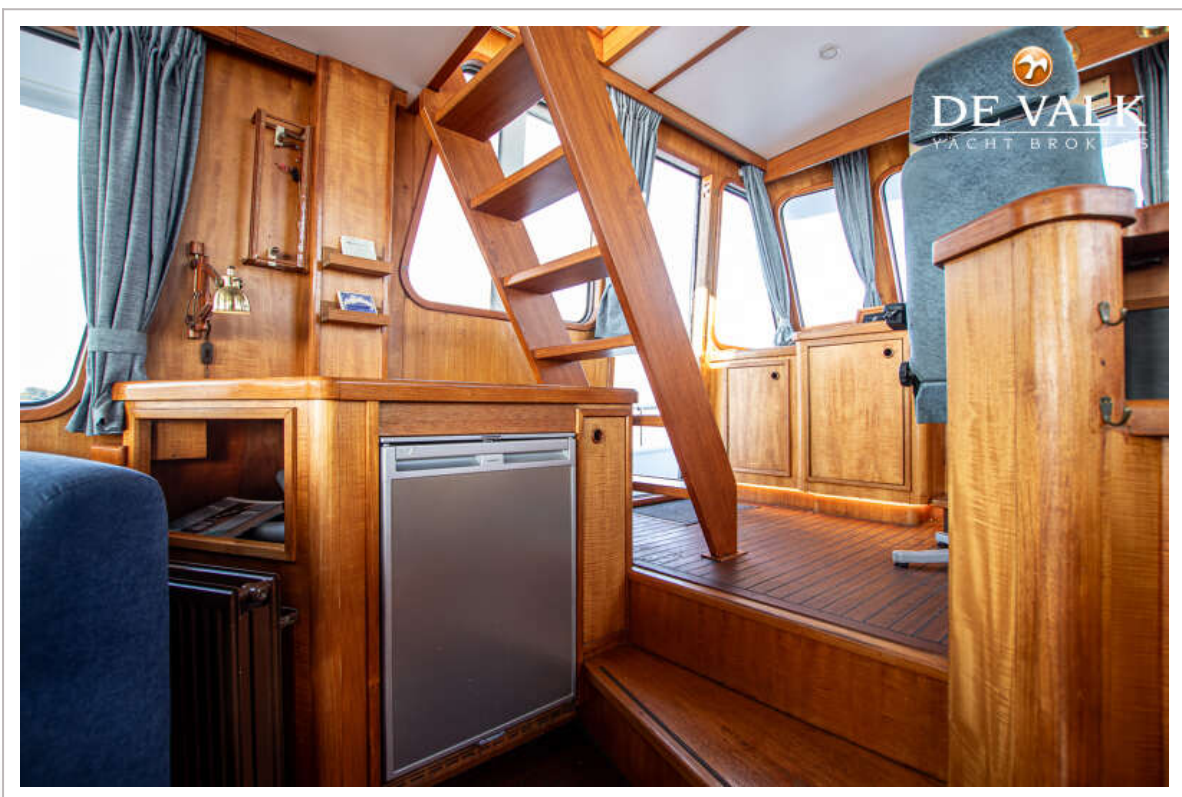




# ALMTRAWLER 1200



# ALMTRAWLER 1200

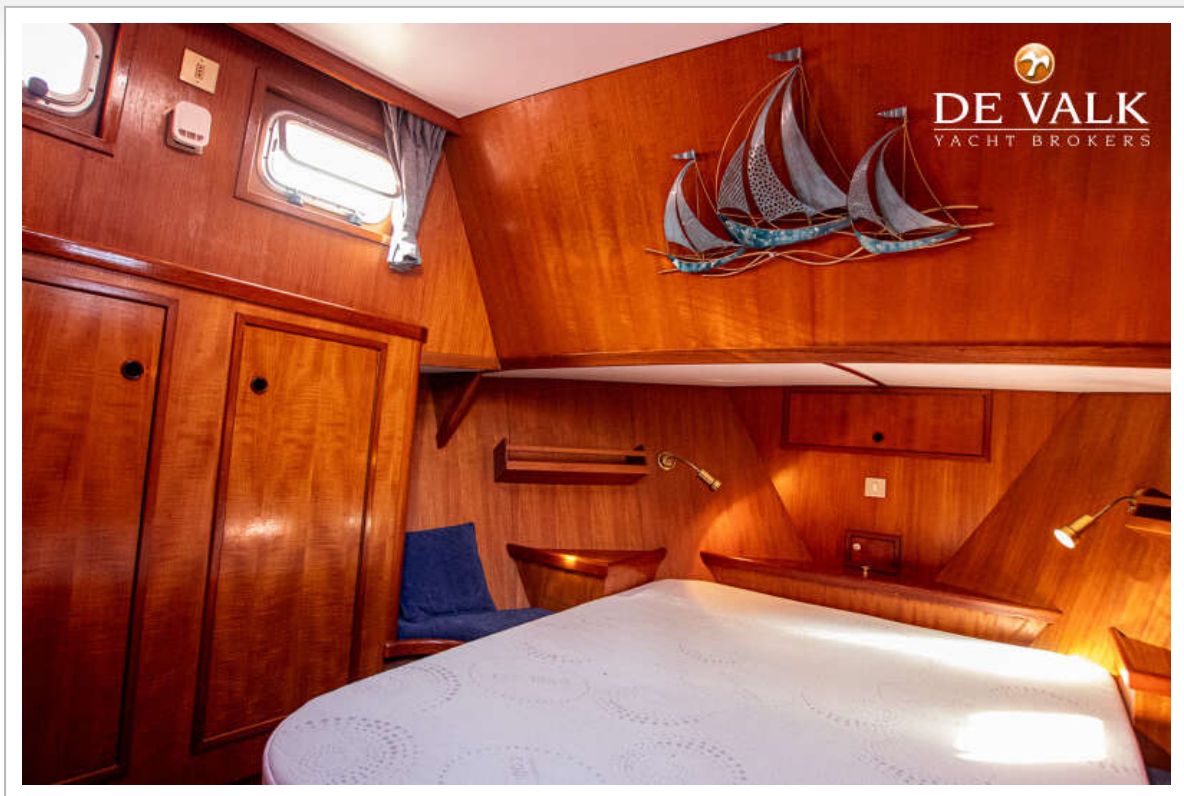




# ALMTRAWLER 1200

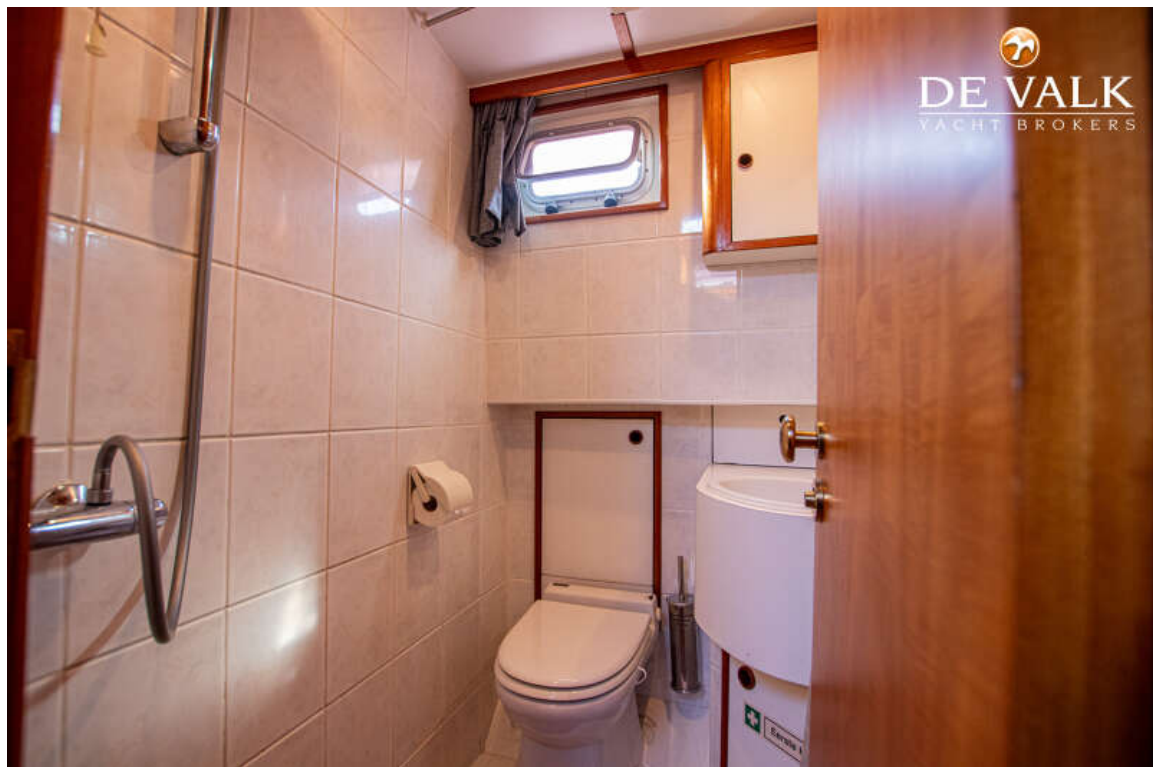


# ALMTRAWLER 1200

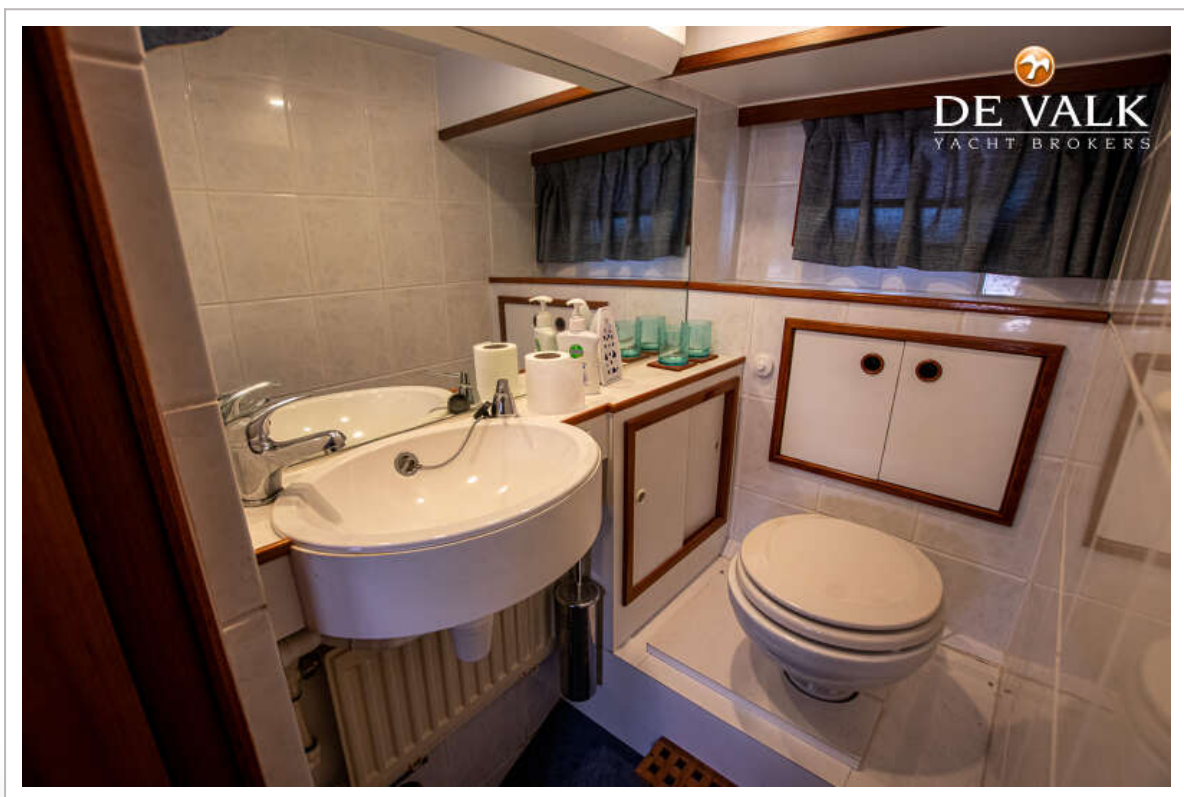
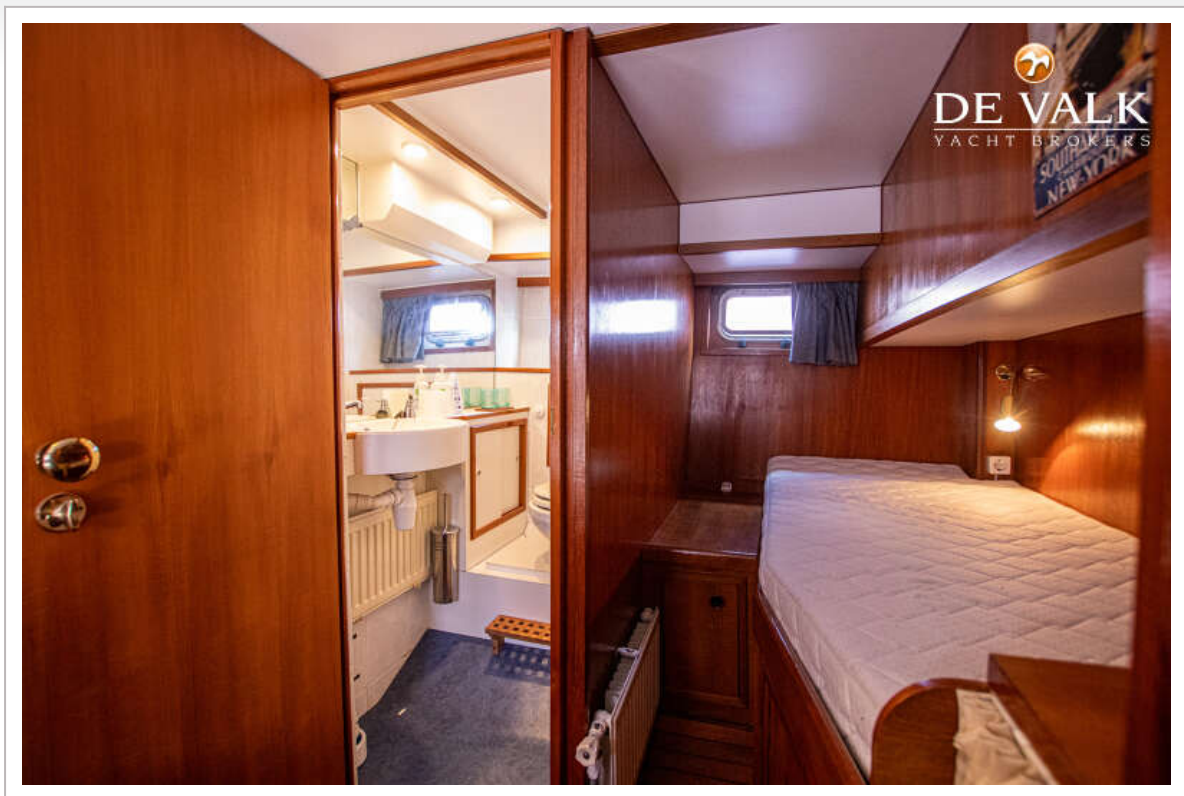




# ALMTRAWLER 1200

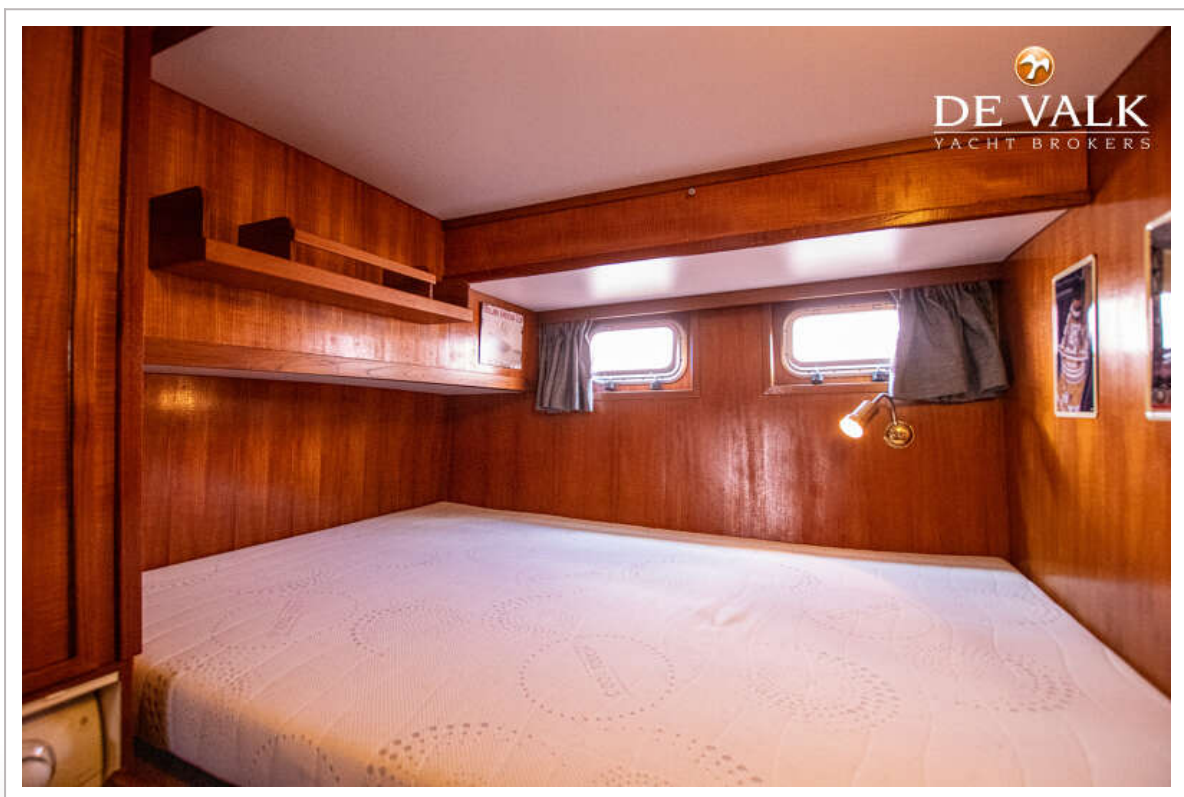
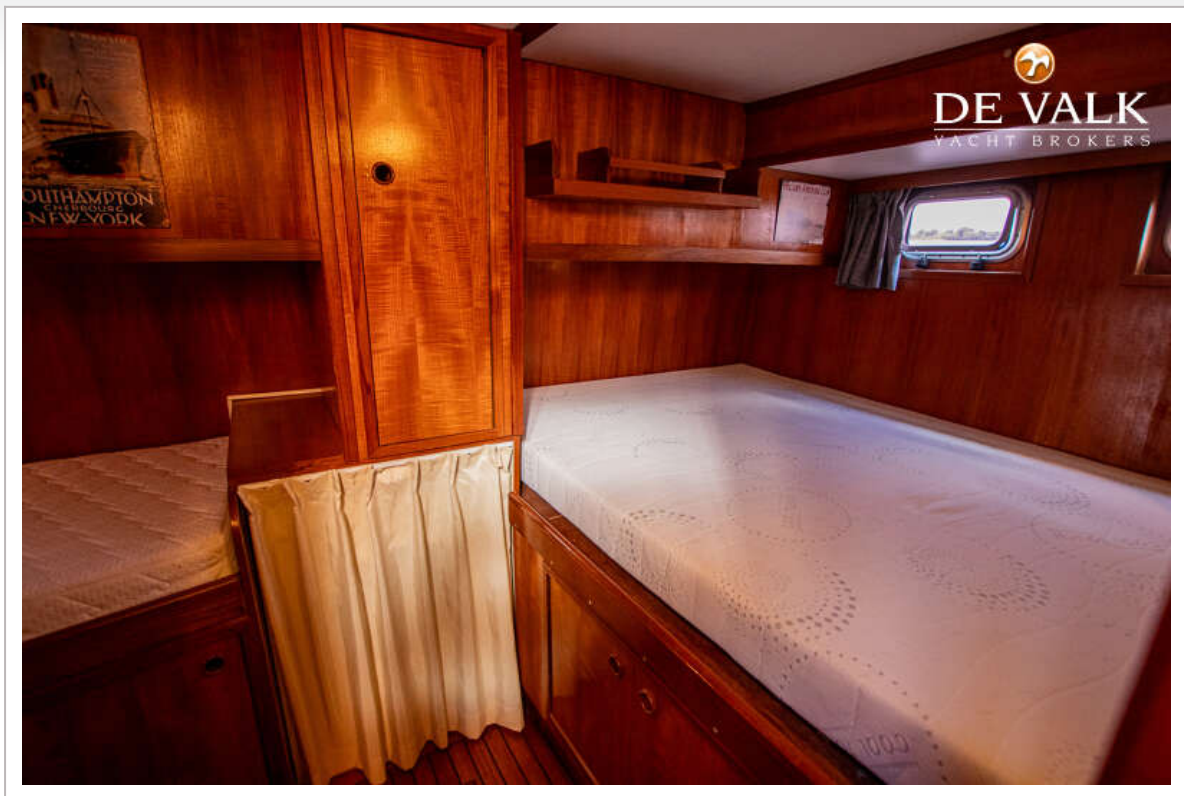


# ALMTRAWLER 1200





# ALMTRAWLER 1200

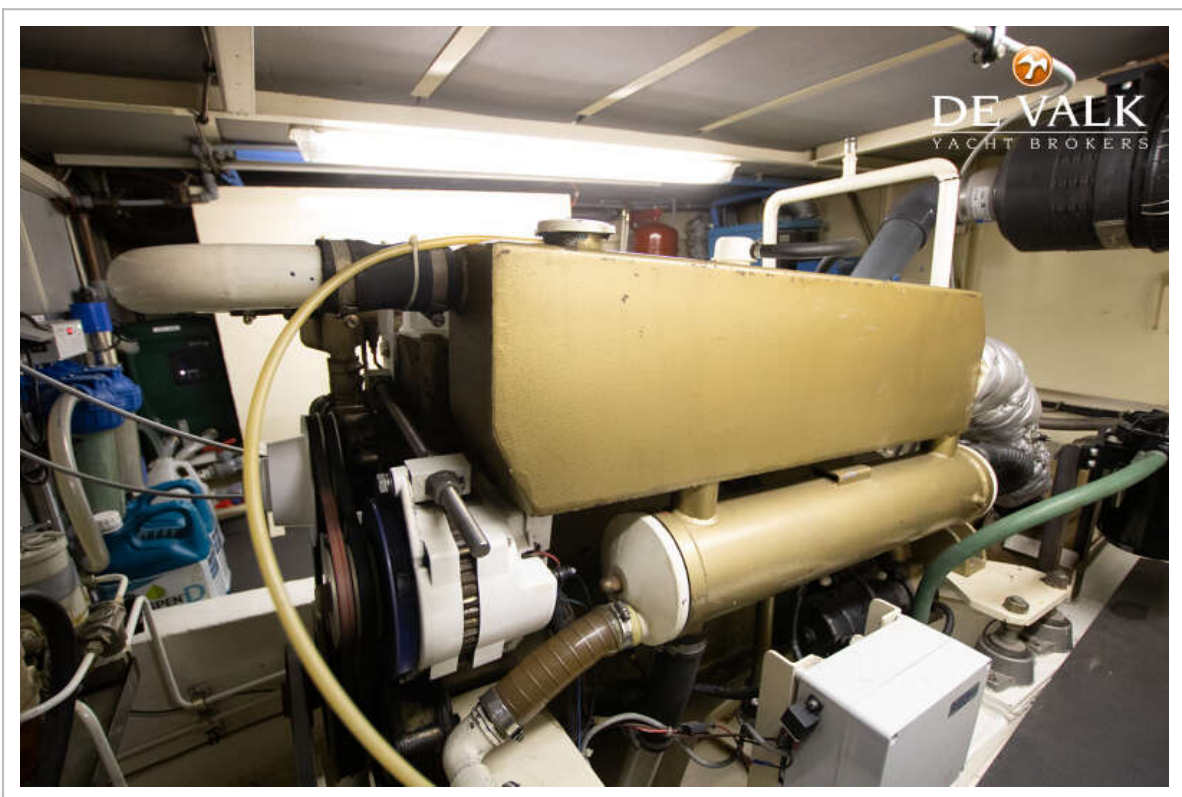


# ALMTRAWLER 1200





# ALMTRAWLER 1200



# ALMTRAWLER 1200

