



DE VALK
YACHT BROKERS



PRESTIGE 460 S



DE VALK
YACHT BROKERS

PRESTIGE 460 S

BROKER'S COMMENTS

The Prestige 460S is better than new and in "showroom" condition. As a two-cabin version, it offers generous space for family or friends. The extensive technical equipment provides plenty of comfort for the entire crew. Numerous, tasteful, and well-thought-out additions make this yacht unique. The Volvo IPS drives enable smooth maneuvering even in tight harbors, while also offering impressive handling characteristics. A yacht for long cruises, ready to go.

Ralph Weil

SPECIFICATIONS

Dimensions	14.29 x 4.30 x 1,05 / 0.00 (m)	Builder	Prestige
Built	2023	Cabins	2
Material	GRP	Berths	6
Engine(s)	2 x Volvo-Penta IPS 500 D6-380 diesel	Hp/Kw	2 x 380.00 (hp), 279.68 (kw)
Asking price	€ 795.000 (VAT Paid)	Lying	contact Berlin

CONTACT

Sales office	De Valk Berlin	Telephone	+49 30 325 99 651
Address	Siegfried-Berger Str.13 12557 Berlin DE	E-mail	berlin@devalk.nl

DISCLAIMER

These particulars are given in good faith as supplied but cannot be guaranteed.



PRESTIGE 460 S

GENERAL

Model	PRESTIGE 460 S
Type	motor yacht
LOA (m)	14,29
Beam (m)	4,30
Draft min (m)	1,05
Air draft min (m)	4,73
Year built	2023
Builder	Prestige
Country	France
Displacement (t)	16
CE norm	B
Hull material	GRP
Hull colour	white
Hull shape	V-shaped hull
Rubbing strake	rubber
Deck material	GRP
Deck finish	non-skid moulded in
Cockpit deck finish	teak
Antifouling (year)	2023
Window frame	yes
Window material	tempered glass
Deckhatch	yes
Fuel tank (litre)	stainless steel 1.240 l.
Level indicator (fuel tank)	yes
Freshwater tank (litre)	stainless steel 586 l.
Level indicator (freshwater)	yes
Blackwater tank (litre)	stainless steel 120 l.
Level indicator (blackwater)	yes
Wheel steering	electric
Inside helm position	yes



Outside helm position

electric 2. Joystick im Cockpit

Extra info

Bow sun lounger with adjustable backrest and cover

ACCOMMODATION

Cabins

2

Berths

6

Crew cabin

not expanded, serves as a large storage space

Interior

oak White / weiß

Floor

wood With additional high-quality carpet

Open cockpit

yes

Deck saloon

Equipment variant Excellence Equipment level Preference

Saloon

yes

Headroom saloon (m)

2,00

Sliding roof

electric Incl. blinds / Sonnenblenden

Air-conditioning

reverse cycle airco 42.000 Btu

Aft Cabin

yes

Dinette to convert into berth

with insert cushion with original cover, electric lift

Sliding door to cockpit

3 pieces

Galley

The furniture fronts have been replaced with high-quality matte white furniture door elements. The original doors and surfaces are still intact.

Countertop

corian

Sink

stainless steel

Cooker

electric 3 x Ceran

Microwave/oven combi

174 l.

Fridge

yes

Freezer

16 l.

Hot water system

220V + engine 40 l.

Water pressure system

electrical

Crockery

complete "Marine Business"

Owners cabin

double bed

Bed length (m)

200 cm x 160 cm



PRESTIGE 460 S

Wardrobe	hanging/drawers/shelves
Bathroom	en suite
Toilet	en suite
Toilet system	electric
Wash basin	in the bathroom
Shower	en suite
Extra info	Sleeping comfort through Froli Star bed system/under-ventilation
Guest cabin 1	double bed Converts to 2 single beds zu Einzelbetten wandelbar
Bed length (m)	200cm x 150cm
Wardrobe	hanging/drawers/shelves
Bathroom	separate
Toilet	separate
Toilet system	electric
Wash basin	in the bathroom
Shower	separate
Extra info	Sleeping comfort through Froli Star bed system/under-ventilation
Extra info	Shore water connection in the anchor locker

MACHINERY

No of engines	2
Make	Volvo-Penta
Type	IPS 500 D6-380
HP	380
kW	279.68
Fuel	diesel
Year installed	2023
Maximum speed (kn)	30
Cruising speed (kn)	25
Range (nm)	240
Engine hours	125



PRESTIGE 460 S

Engine cooling system	freshwater heat exchanger
Drive	IPS
Engine controls	electrical
Bowthruster	85 KgF
Exhaust	watercooled
Manual bilge pump	yes
Electric bilge pump	2 x
Generator	silent separator 11 KVA
Start battery	220 AH
Service battery	460 AH
Battery monitor	yes
Battery charger	12V / 2 x 25 A
Inverter	2.000W
Shorepower	with cable
Trimtabs	Zipwake, automatic
Extra info	Camera in engine room

NAVIGATION

Compass	yes
Depth sounder	yes
Log	yes
VHF	Garmin
Autopilot	Garmin IPS
Rudder angle indicator	yes
Plotter/GPS	2 x Garmin 12" MFD
Camera	Rear view camera day/night Garmin GC 200
Navigation lights	yes
Extra info	Camera midship port railing

EQUIPMENT

Bimini	electric bimini over cockpit with "privacy" shading
--------	---



Window cover	For front and side windows of the salon
Cockpit cushions	yes
Cockpit table	electrically lowerable, insert cushion in the same fabric as the seat
Cockpit chairs	yes
Bathing platform	hydraulically lowerable with teak choks for jet ski or RIB, 2 folding cleats
Boarding ladder	stainless steel
Transom door	yes
Deck shower	yes
Anchor	Delta
Anchor chain	yes
Chain counter	yes
Windlass	electrical
Deck wash	separate pump with taps in the anchor locker and cockpit
Dinghy	The jet ski is not part of the offer
Sea railing	stainless steel
Grab rail (superstructure)	stainless steel
Wiper	2 x
Window heating	yes
Horn	yes
Fenders	10 x mit Cover
Mooring lines	yes
TV	TV Samsung "The Frame" QLED in Salon + Mastercabin
TV receiver	DVB-T
Radio	Incl. Bluetooth/MP3
iPod connection	yes
Cockpit speakers	yes
Speakers in salon	yes
Extinguisher in engine room	Novec 1230



PRESTIGE 460 S



PRESTIGE 460 S



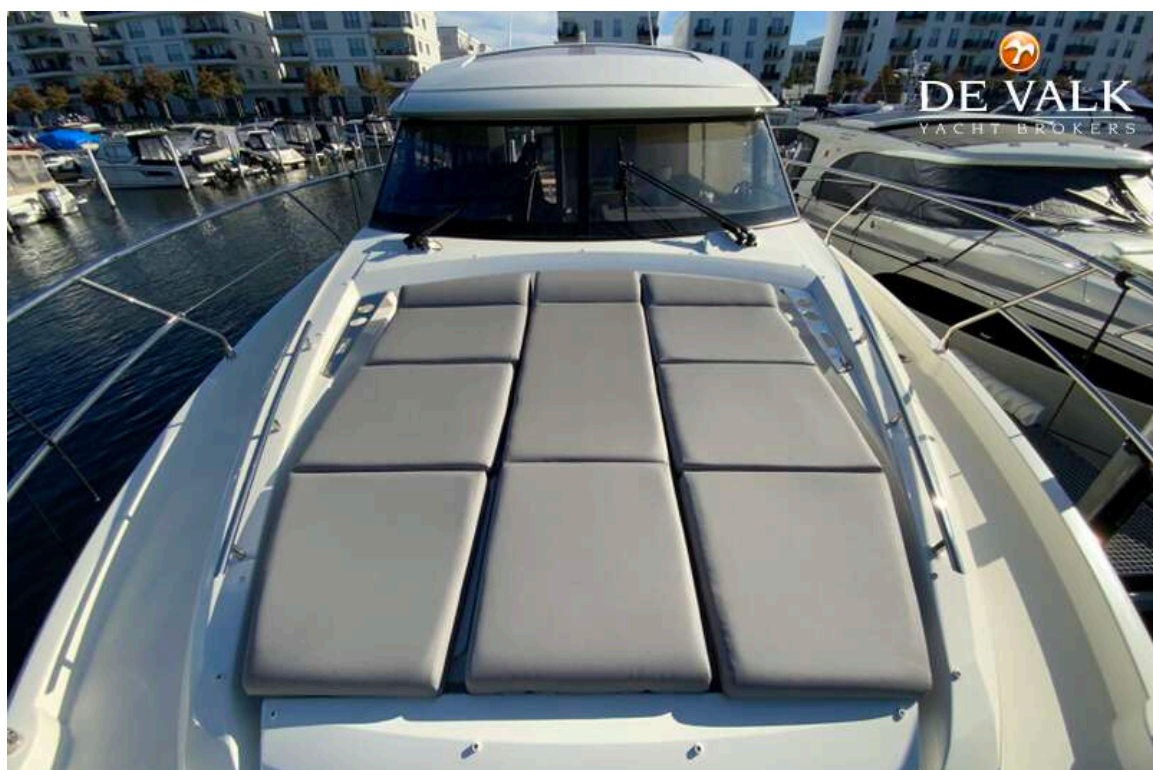
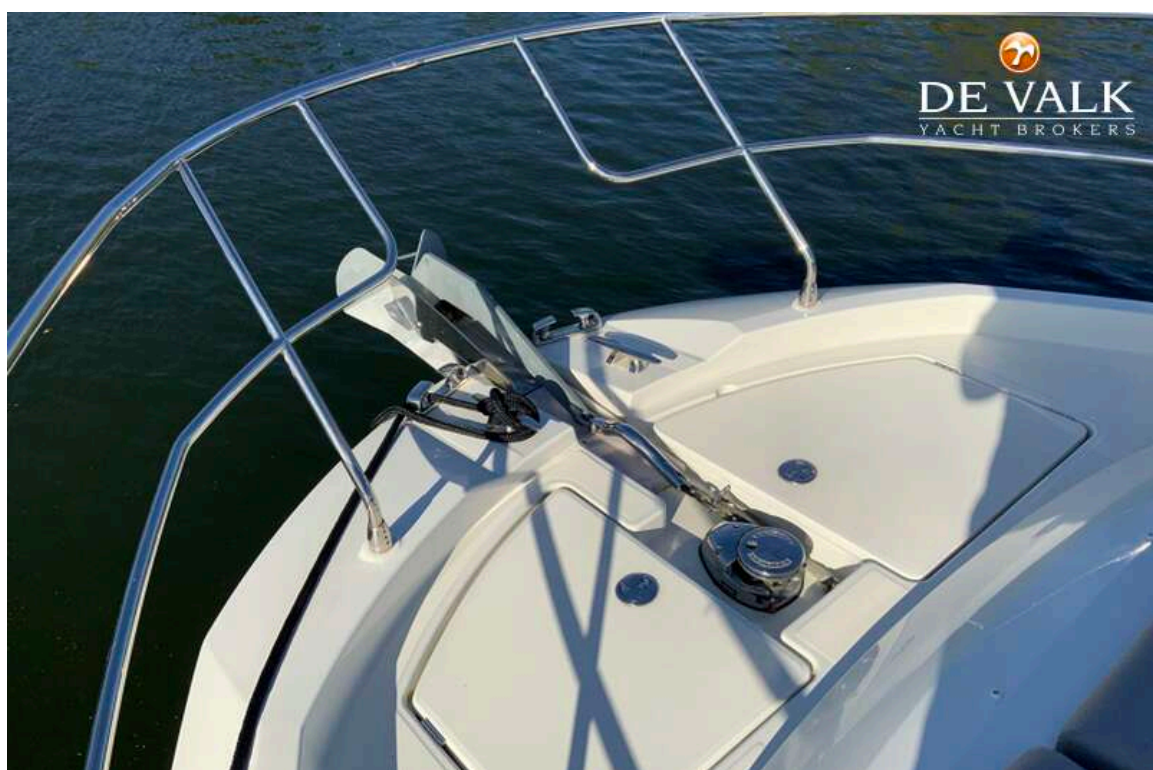
PRESTIGE 460 S



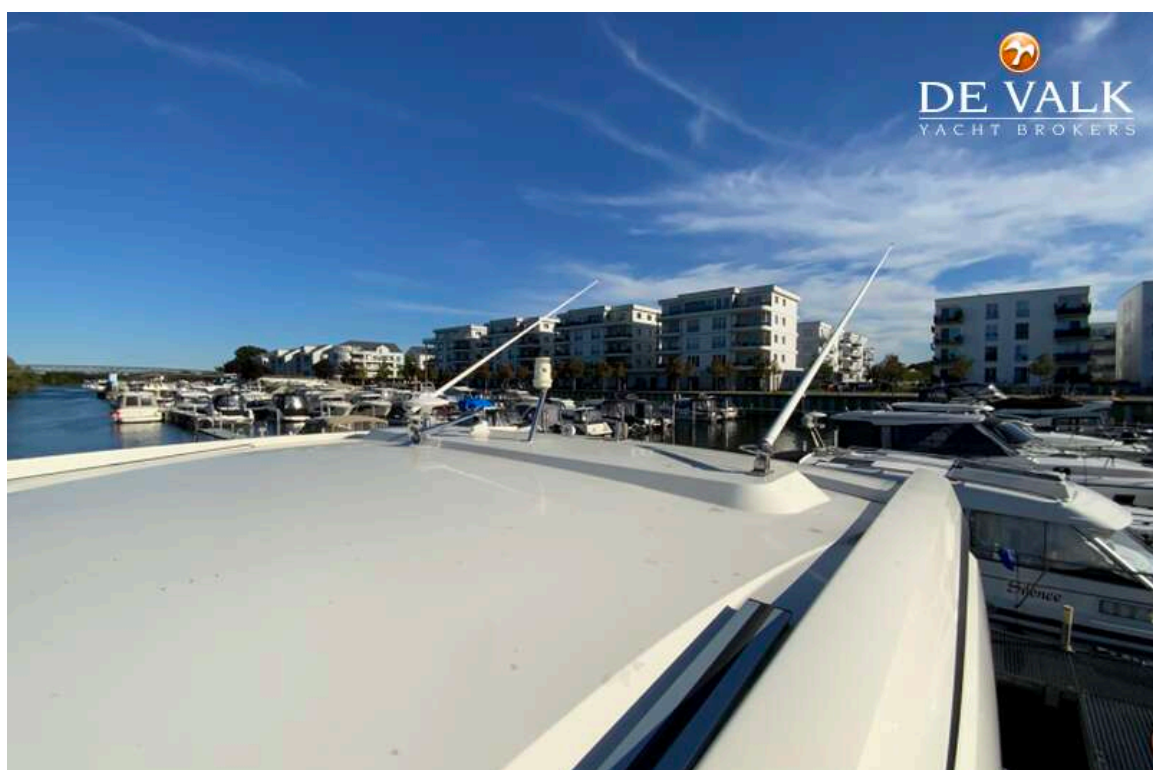
PRESTIGE 460 S



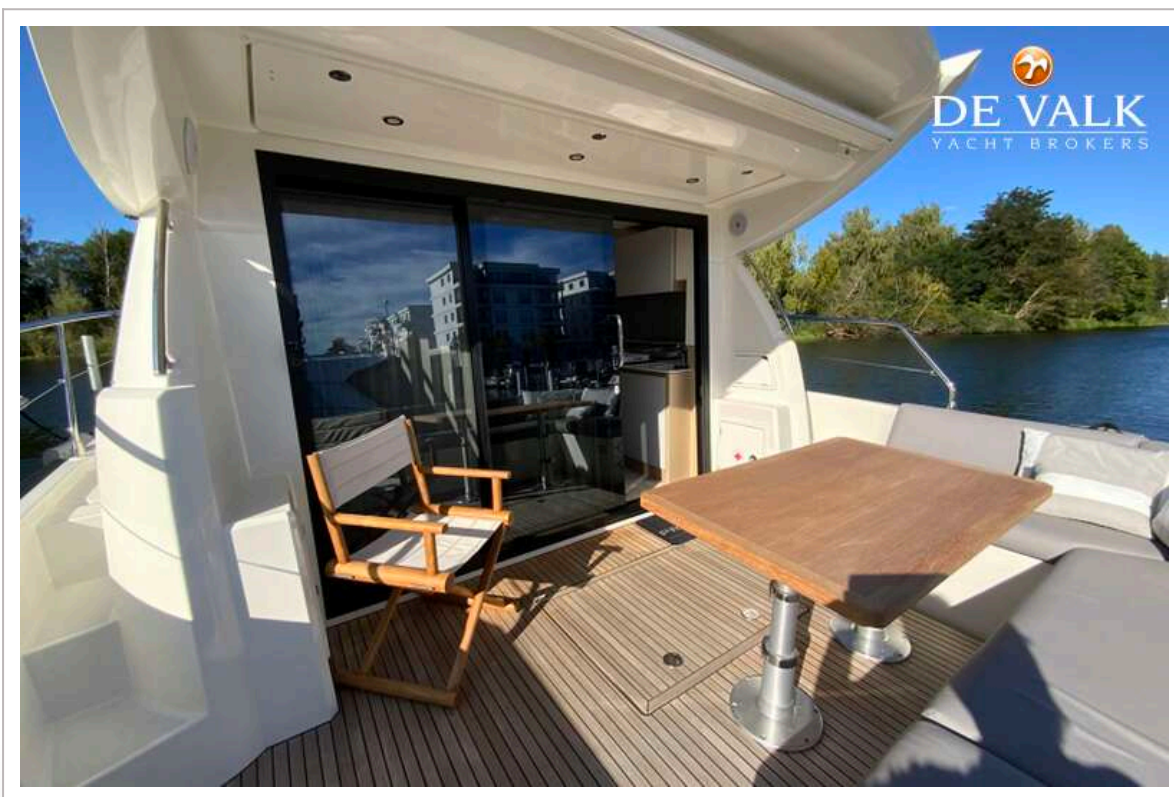
PRESTIGE 460 S



PRESTIGE 460 S



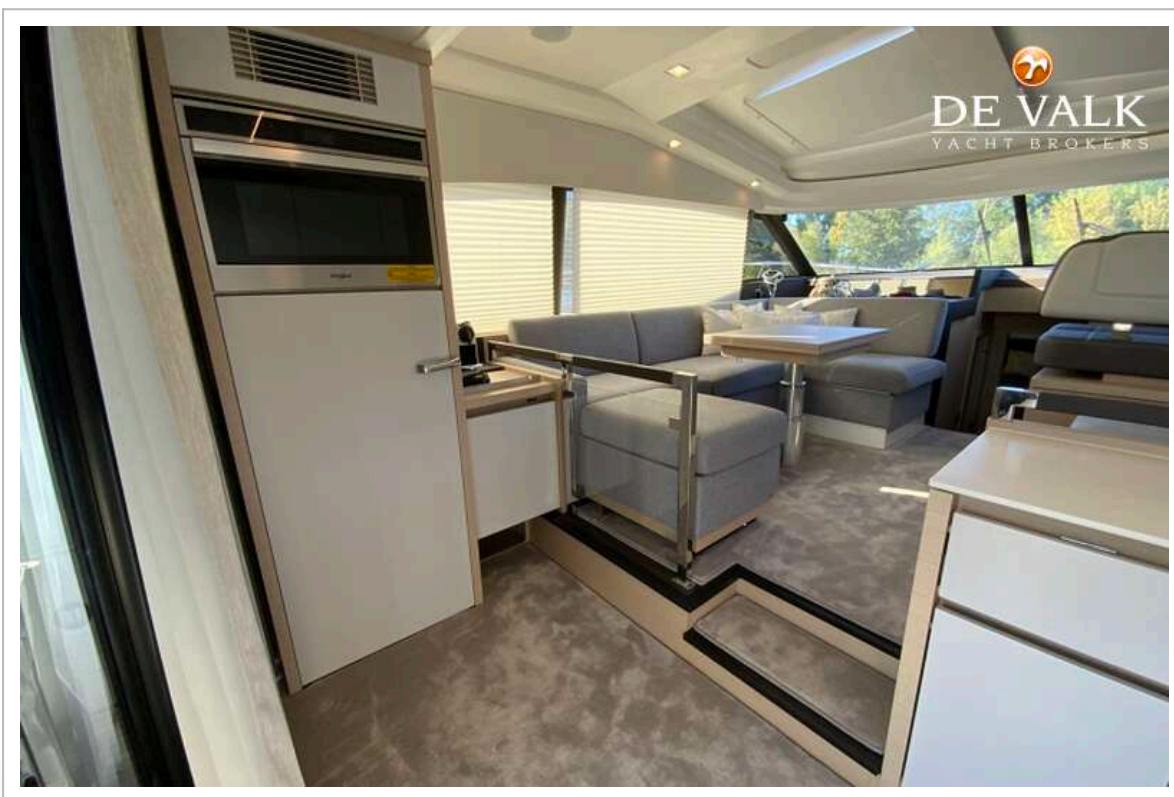
PRESTIGE 460 S



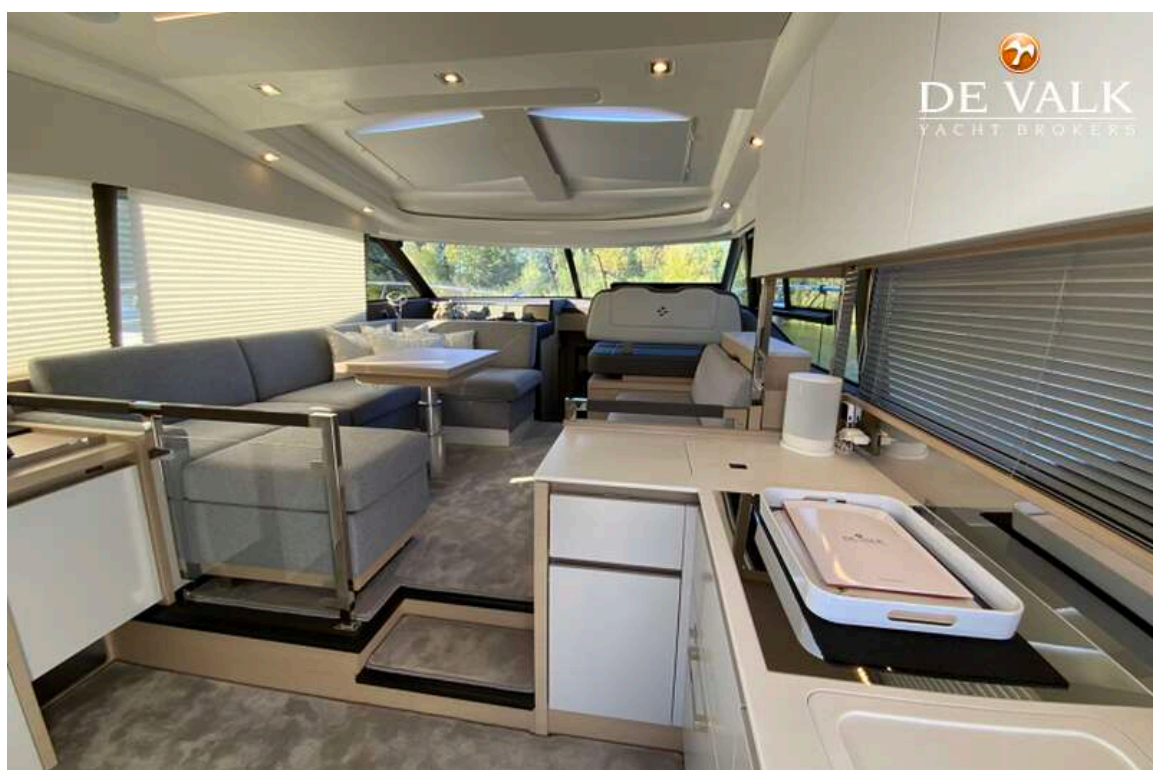
PRESTIGE 460 S



PRESTIGE 460 S



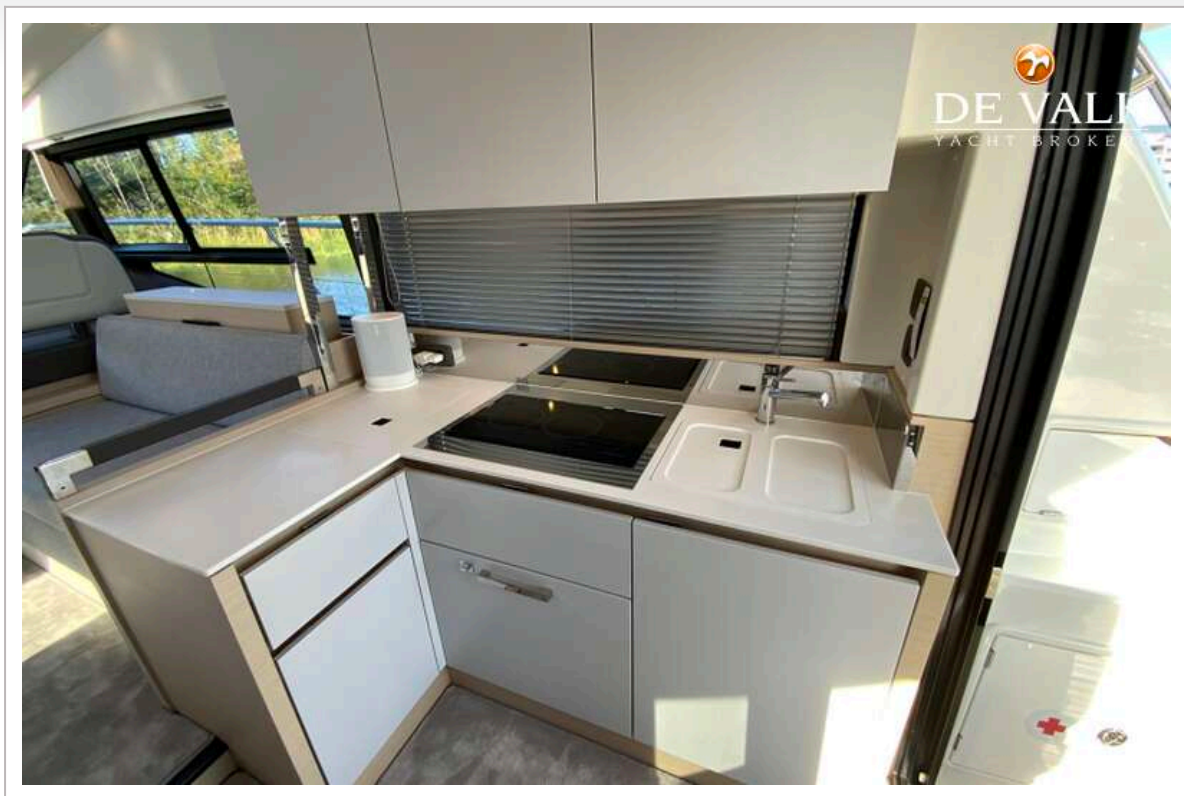
PRESTIGE 460 S



PRESTIGE 460 S



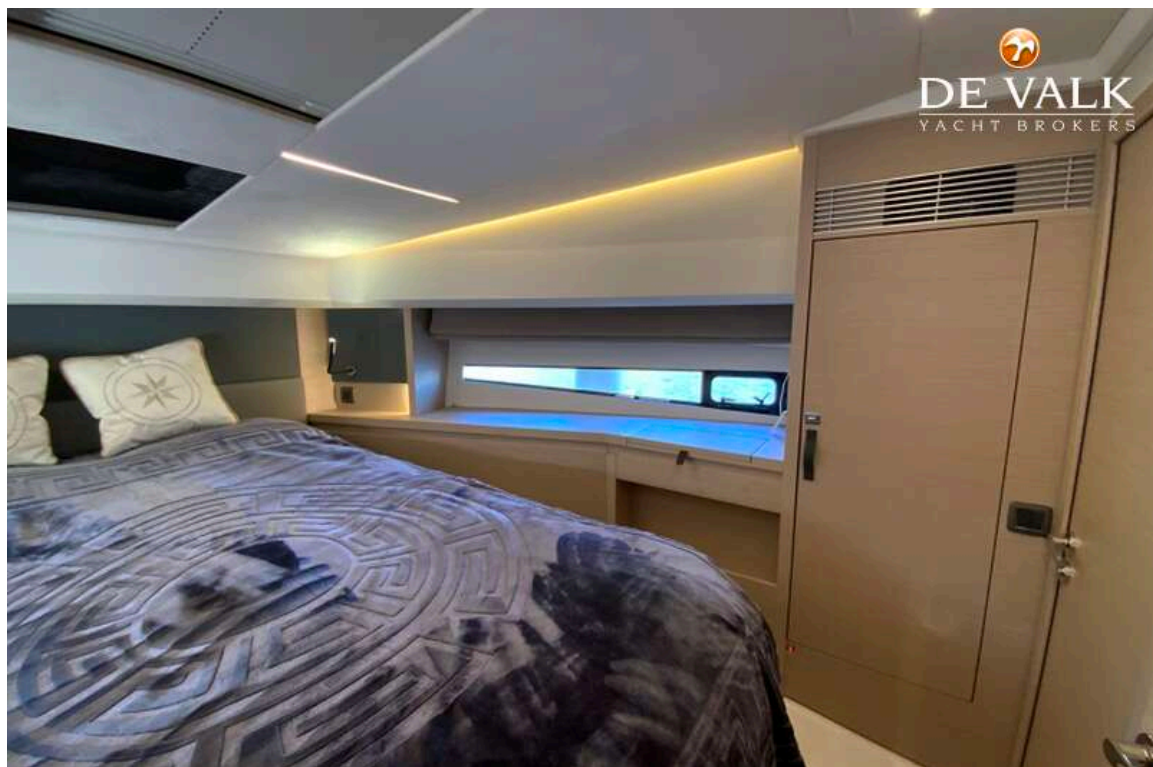
PRESTIGE 460 S



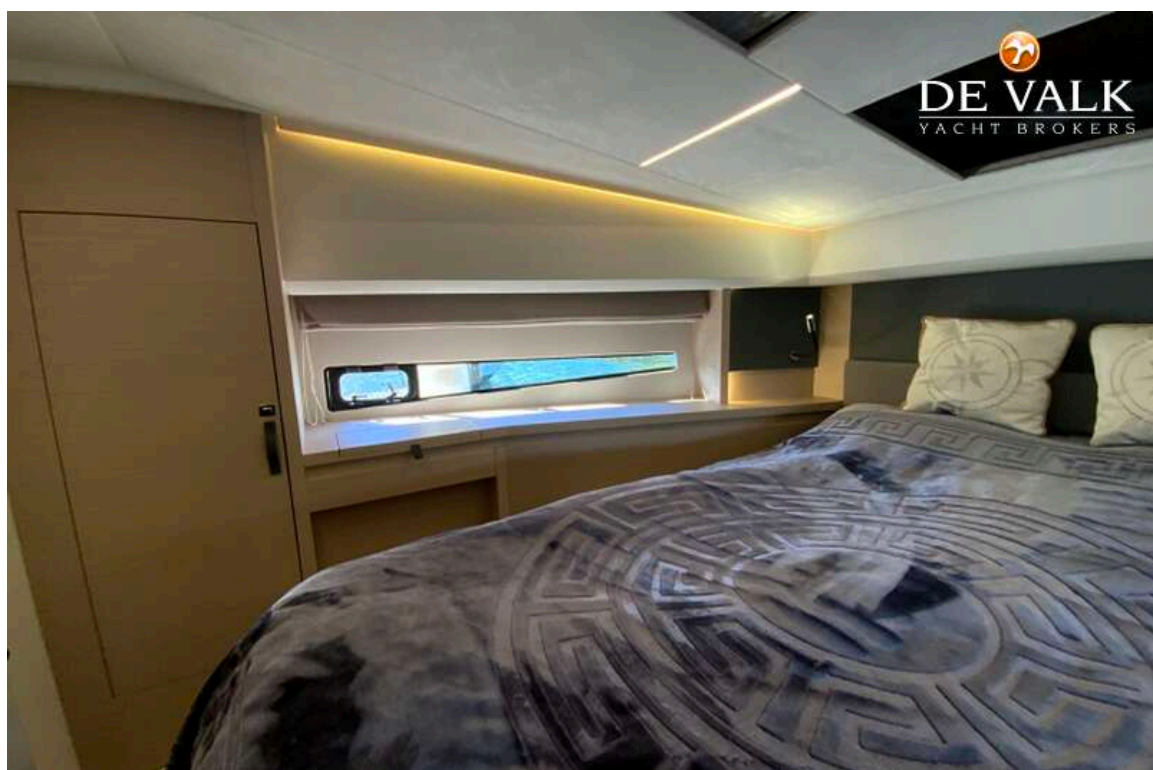
PRESTIGE 460 S



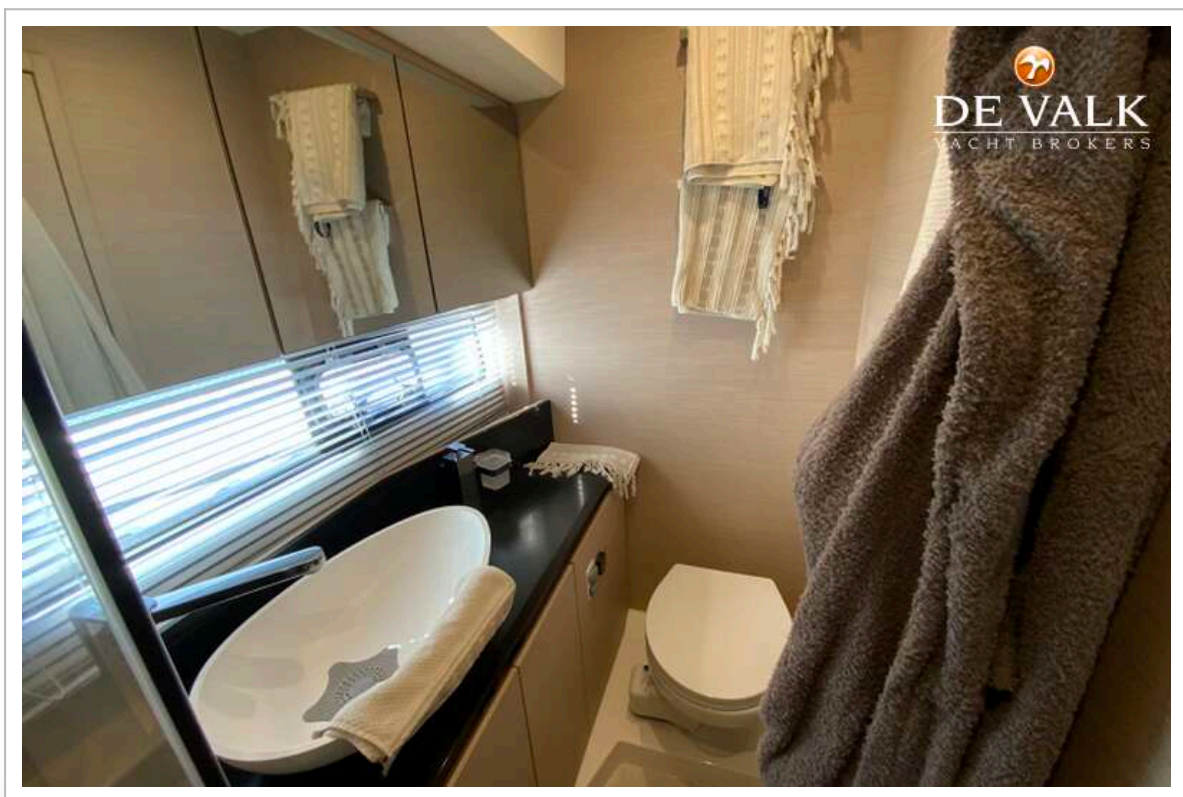
PRESTIGE 460 S

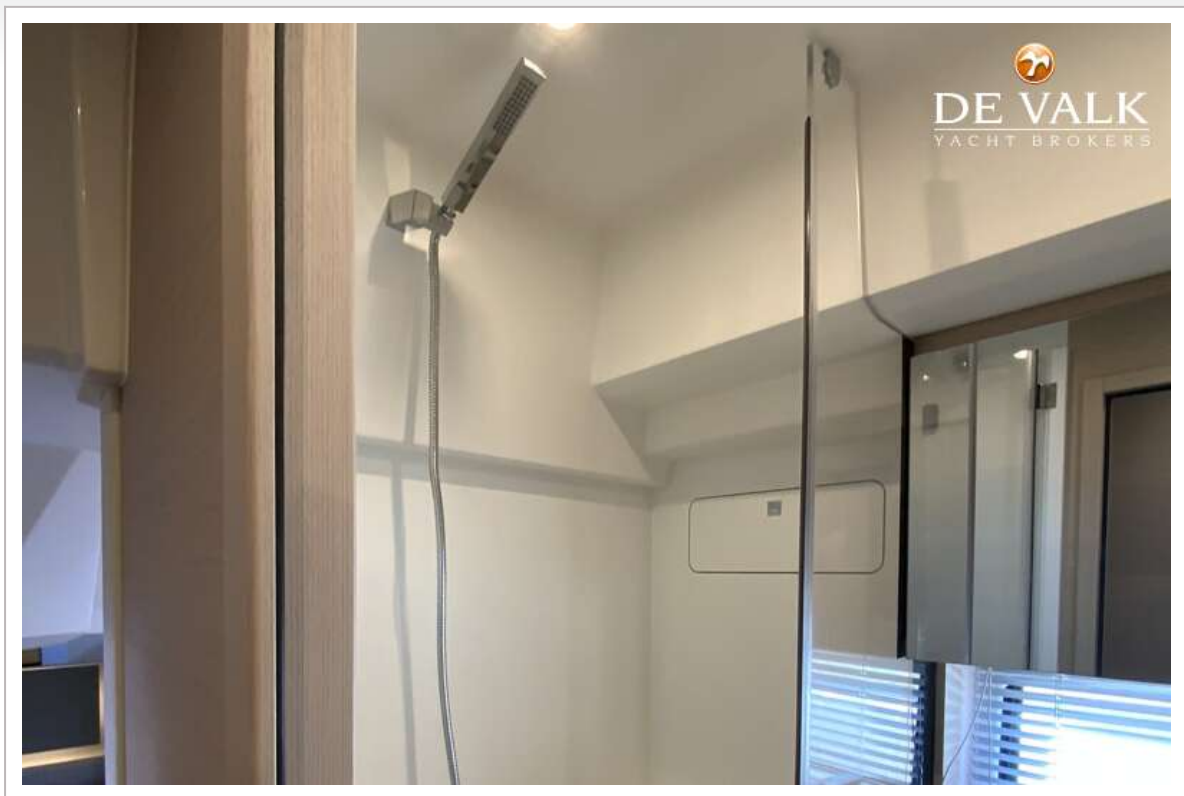


PRESTIGE 460 S

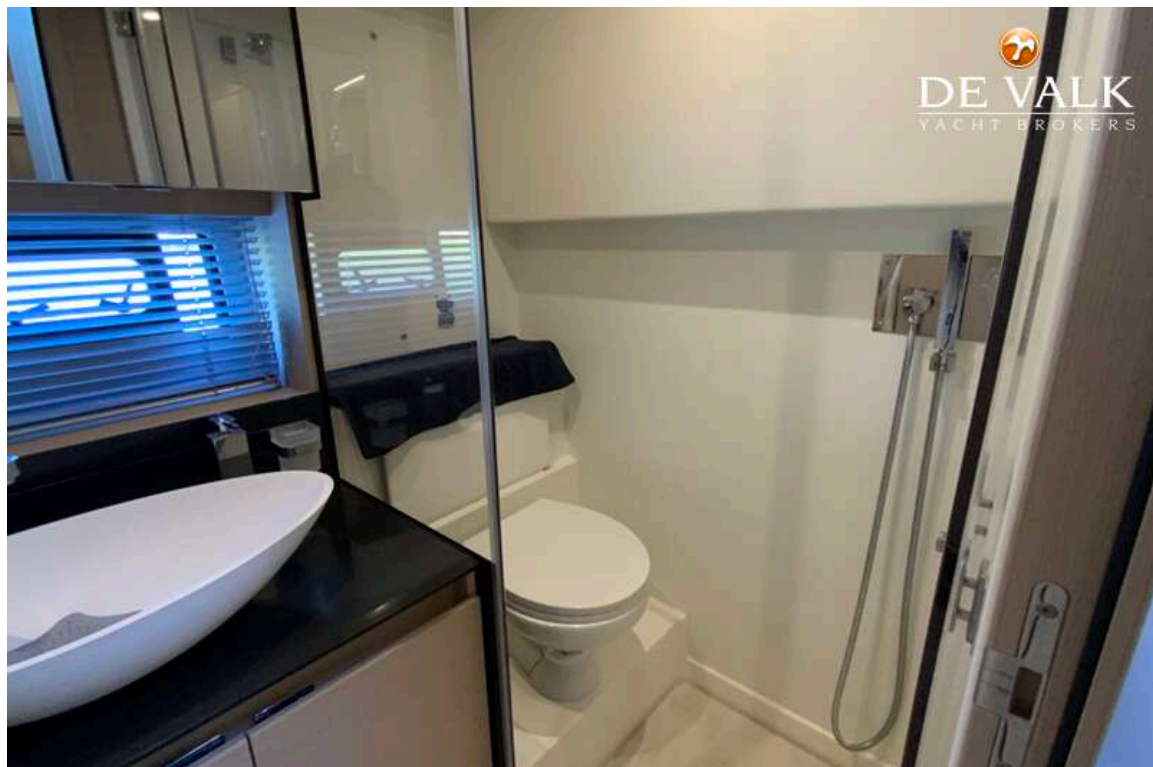


PRESTIGE 460 S

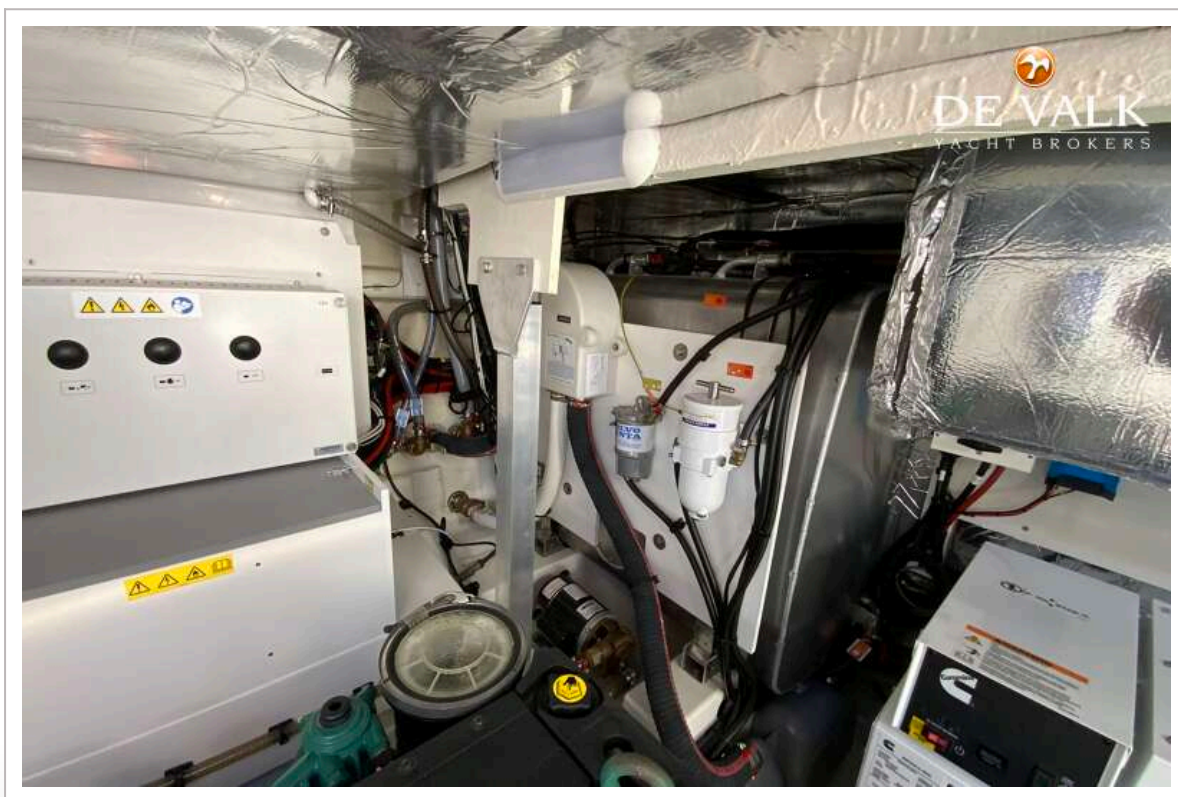




PRESTIGE 460 S



PRESTIGE 460 S



PRESTIGE 460 S



PRESTIGE 460 S

