



DE VALK
YACHT BROKERS



HANSE 430



DE VALK
YACHT BROKERS

HANSE 430

BROKER'S COMMENTS

This 2010 Hanse 430 is an absolute gem immaculate condition and barely used, as if it's been waiting patiently for someone to finally take it sailing. The desirable 3-cabin layout with 2 toilets offers comfort and practicality, while the 1.80 m draft gives you excellent sailing performance without limiting your cruising grounds. Fully equipped with all the bells and whistles (yes, even the ones you didn't know you needed), she's turnkey and truly ready to go.

Hans Visser

SPECIFICATIONS

Dimensions	13.30 x 4.18 x 1.80 (m)	Builder	Hanse Yachts AG
Built	2010	Cabins	3
Material	GRP	Berths	6
Engine(s)	1 x Yanmar 4JH4AE diesel	Hp/Kw	54.00 (hp), 39.74 (kw)
Asking price	sold (VAT)	Lying	at sales office

CONTACT

Sales office	De Valk Hindeloopen B.V.	Telephone	+31 514 52 40 00
Address	Oosterstrand 1 8713 JS Hindeloopen NL	E-mail	hindeloopen@devalk.nl

DISCLAIMER

These particulars are given in good faith as supplied but cannot be guaranteed.



GENERAL

Model	HANSE 430
Type	sailing yacht
LOA (m)	13,30
Beam (m)	4,18
Draft (m)	1,80
Air draft (m)	21,50
Headroom (m)	1,95
Year built	2010
Builder	Hanse Yachts AG
Country	Germany
Designer	Judel & Vrolijk
Displacement (t)	10,4
Ballast (tonnes)	3,2
CE norm	A
Hull material	GRP
Hull colour	antracite gray
Hull shape	round-bilged
Keel type	fin keel
Superstructure material	GRP
Rubbing strake	stainless steel
Deck material	GRP
Deck finish	teak
Superstructure deck finish	teak
Cockpit deck finish	teak
Antifouling (year)	2025
Window frame	aluminium
Window material	polycarbonate
Deckhatch	3x Lewmar flush with deck
Portholes	12x Lewmar
Fuel tank (litre)	stainless steel 230 ltr.



Level indicator (fuel tank)	yes
Freshwater tank (litre)	polyethylene 325 ltr.
Level indicator (freshwater)	yes
Blackwater tank (litre)	stainless steel 30 ltr.
Blackwater tank extraction	deck extraction
Wheel steering	mechanical
Emergency tiller	yes

ACCOMMODATION

Cabins	3
Berths	6
Interior	mahogany
Layout	yes
Floor	teak and holly
Headroom saloon (m)	1,95 mtr.
Heating	diesel ducted hot air Eberspracher
Chart table	yes
Aft Cabin	yes
Galley	yes
Countertop	Duropal
Sink	stainless steel Double
Cooker	calor gas 2 burner
Oven	In Cooker
Microwave/oven combi	Caso MCG30
Hot water system	220V + engine Boiler
Water pressure system	electrical
Owners cabin	v-bed
Bed length (m)	2,00 x 1,93 mtr.
Wardrobe	hanging/drawers/shelves
Bathroom	en suite
Toilet	en suite



Toilet system	manual
Wash basin	in the bathroom
Shower	en suite
Guest cabin 1	double bed
Bed length (m)	2,00 x 2,00 mtr.
Wardrobe	hanging and drawers
Guest cabin 2	double bed
Bed length (m)	2,00 x 1,50 mtr.
Wardrobe	hanging and drawers
Bathroom	shared
Toilet	shared
Toilet system	manual
Wash basin	in the bathroom
Shower	shared

MACHINERY

No of engines	1
Make	Yanmar
Type	4JH4AE
HP	54
kW	39.74
Fuel	diesel
Year installed	2010
Maximum speed (kn)	8
Cruising speed (kn)	7
Engine cooling system	freshwater heat exchanger
Drive	sail-drive
Saildrive seal	yes
Engine controls	bowden cable
Gearbox	mechanical
Bowthruster	electric



Propeller type	folding
Manual bilge pump	yes
Batteries	5
Start battery	Banner 12 V 70 Ah
Service battery	2x Victron AGM 12 V 165 Ah 2020
Bowthruster battery	2x Victron AGM 12 V 130 Ah 2020
Battery monitor	Victron
Battery charger/inverter	Victron MultiPlus 12/3000/120
Shorepower	with cable

NAVIGATION

Compass	Plastimo contest 130
Multi control display	2x Simrad IS 20
Windset	Simrad IS 20
VHF	Simrad RS82
Autopilot	Simrad AP 24
Radar	B&G 2024
Plotter/GPS	Simrad NSS Evo2
AIS transceiver	Navico NAIS 300
Radio receiver	yes
Navigation lights	LED

EQUIPMENT

Sprayhood	Zeilmakerij De Vuurtoren 2025
Cockpit cover	Zeilmakerij De Vuurtoren 2025
Cockpit cushions	yes
Cockpit table	yes
Boarding ladder	stainless steel
Deck shower	yes
Anchor	yes
Anchor chain	yes



Outboard support	yes
Sea railing	wire
Grab rail (superstructure)	stainless steel
Pulpit	yes
Lifebuoy	yes
Radar reflector	yes
Fenders	yes
Mooring lines	yes
TV	Lenco
Radio	Fusion MS-RA670
Cockpit speakers	yes
Speakers in salon	yes
Clock - barometer	yes
Fire extinguisher	yes

RIGGING

Rigging	sloop
Standing rigging	wire
Brand mast	Seldén
Material mast	aluminium
Spreaders	Double
Mainsail	2x
Mainsail cover	yes
Fully battened mainsail	yes
Jib	Quantum
Genoa	North sails
Genoa furler	Furlex
Genoa cover	yes
Code Zero	yes
Self tacking jib installation	yes
Reefing System	slabreefing



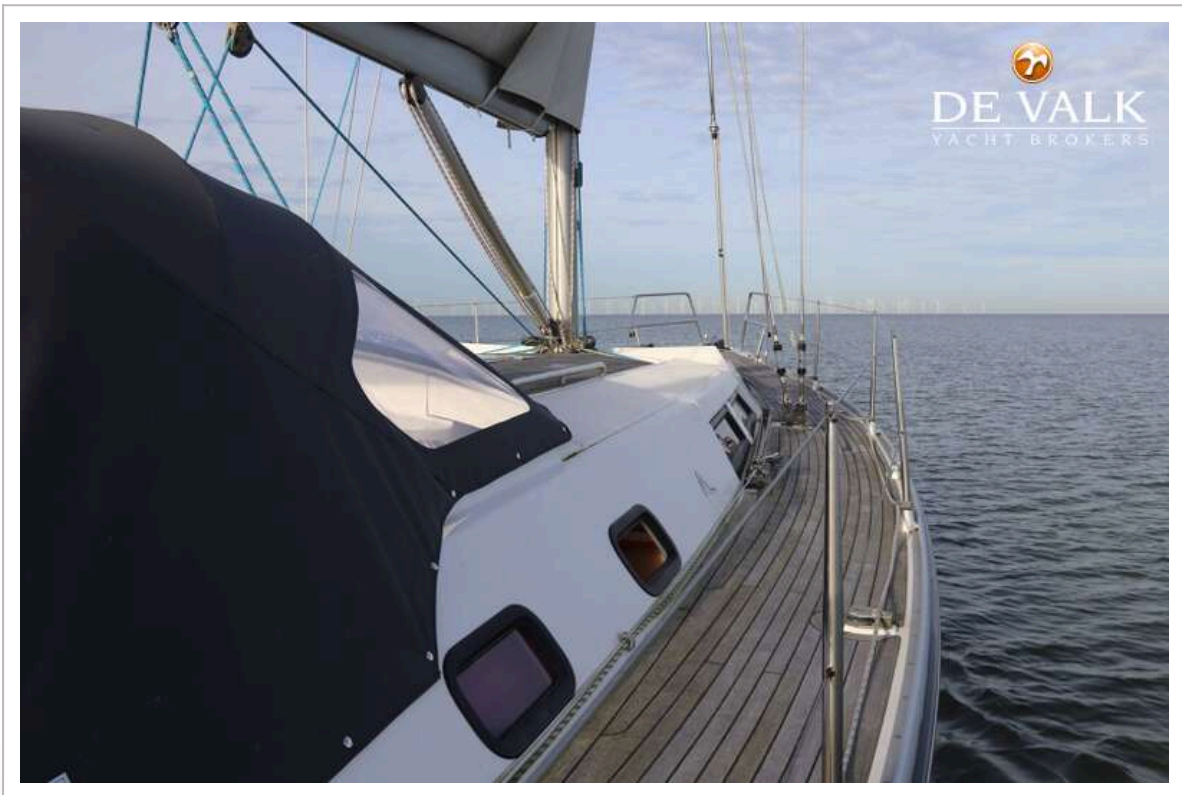
Backstay adjuster	mechanical
Boomvang	gasspring
Genoa sheetwinches	2x Lewmar 46 2 speed st
Multifunctional winches	1x Lewmar Electric 46 2 speed st 1x Lewmar 46 2 speed st
Spi-pole	aluminium



HANSE 430



HANSE 430



HANSE 430



HANSE 430



HANSE 430



HANSE 430



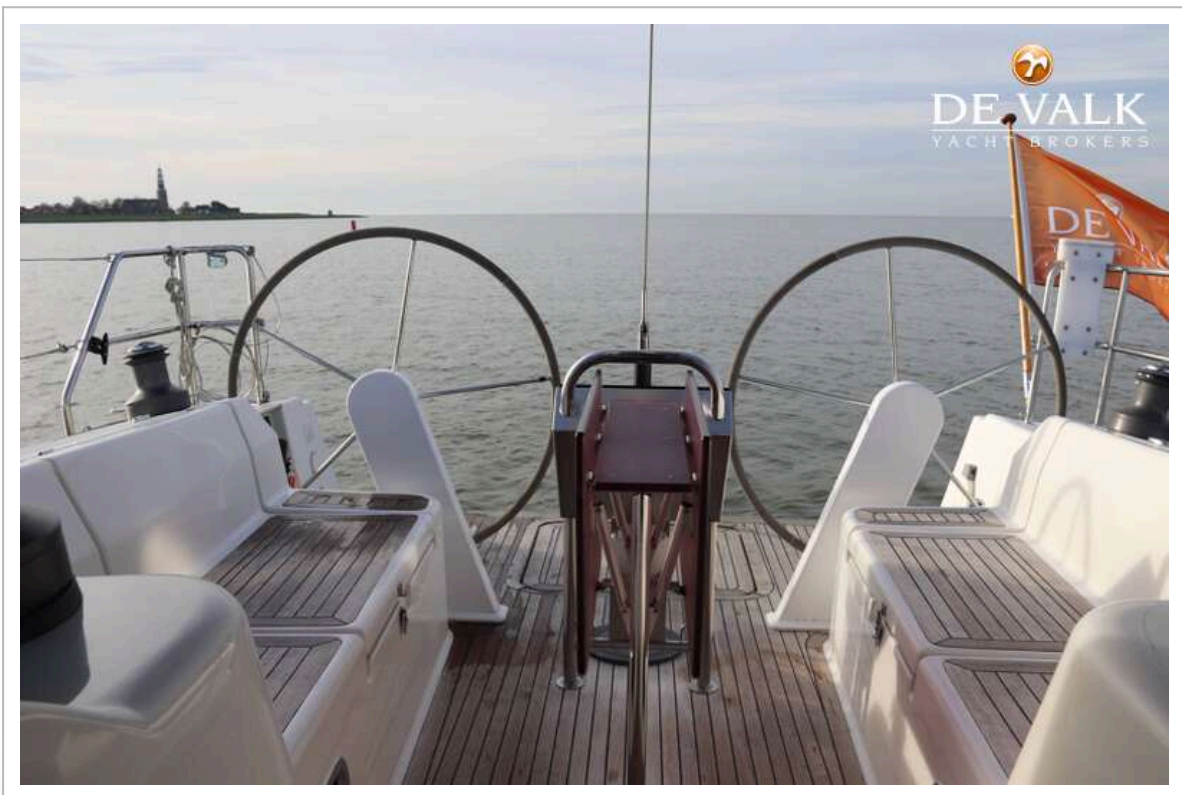
HANSE 430



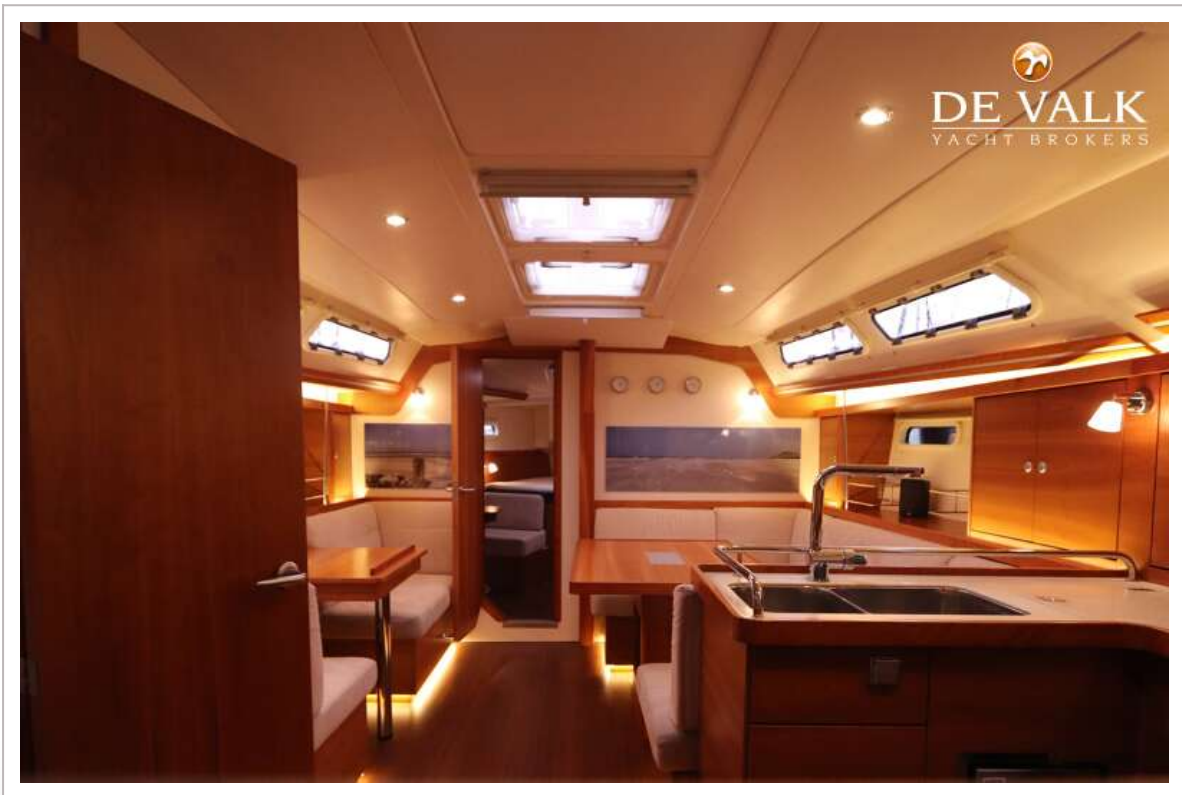
HANSE 430



HANSE 430



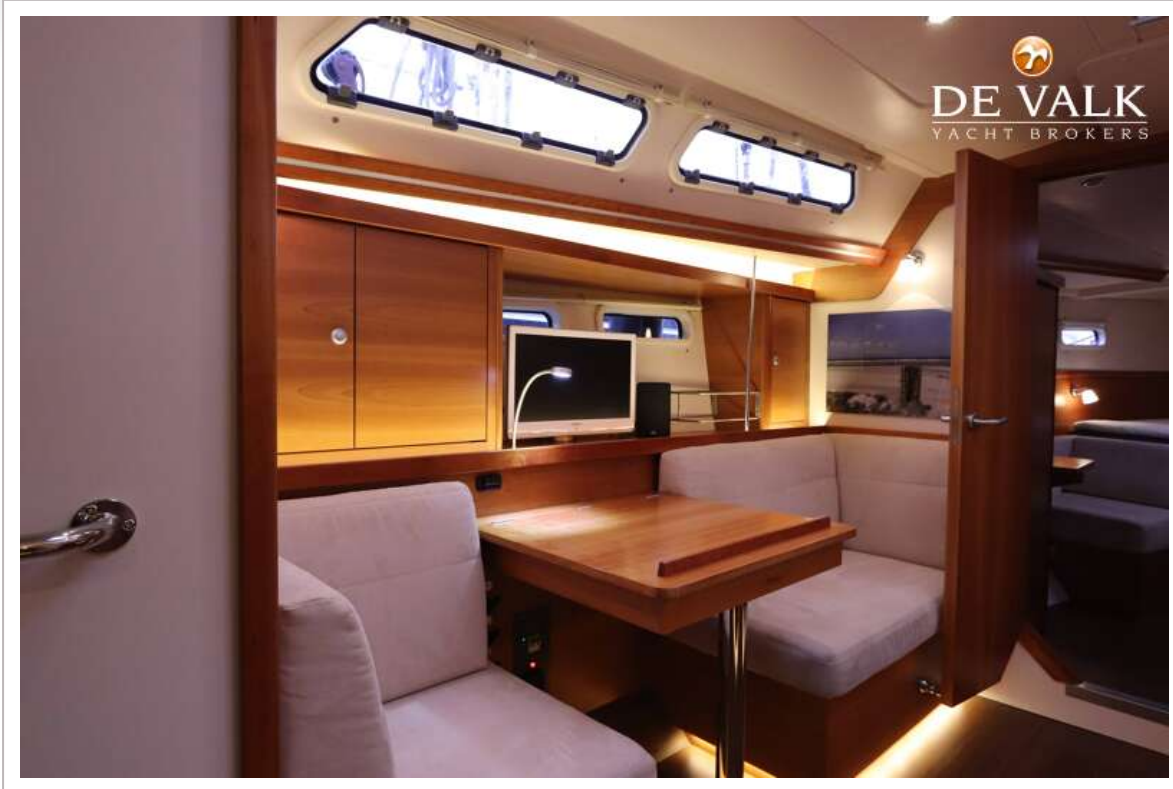
HANSE 430



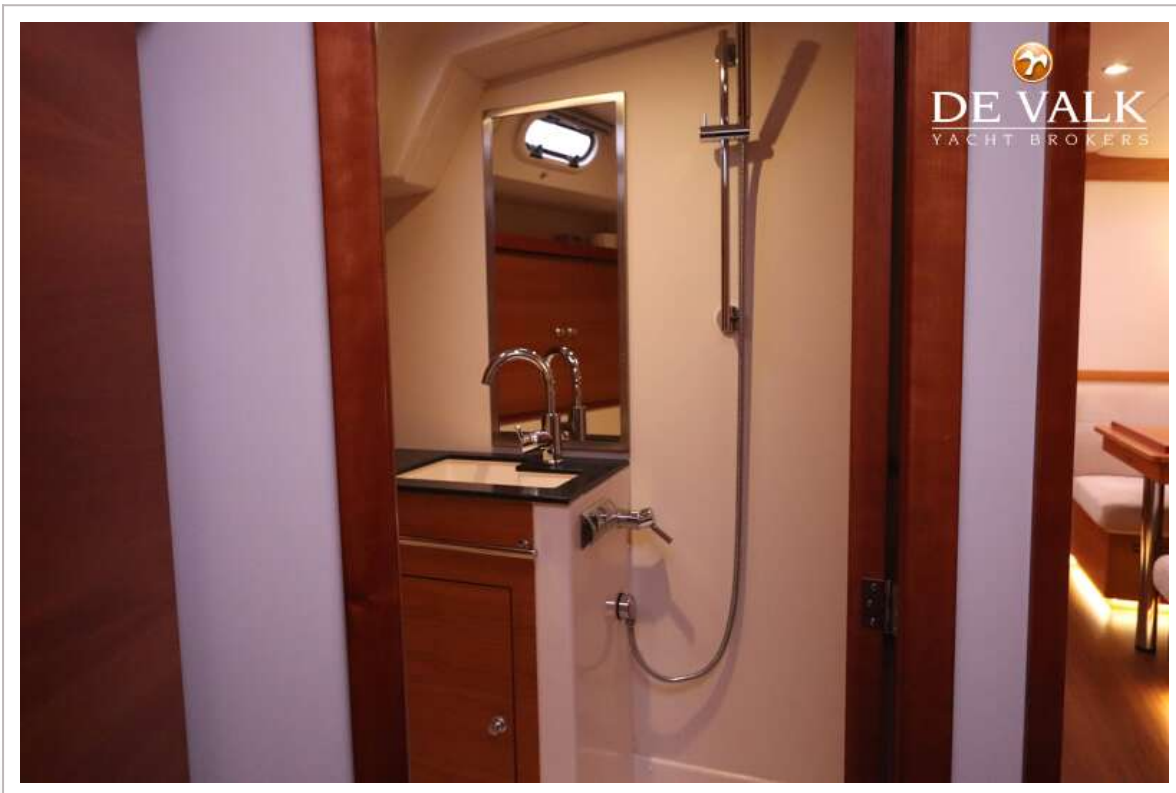
HANSE 430



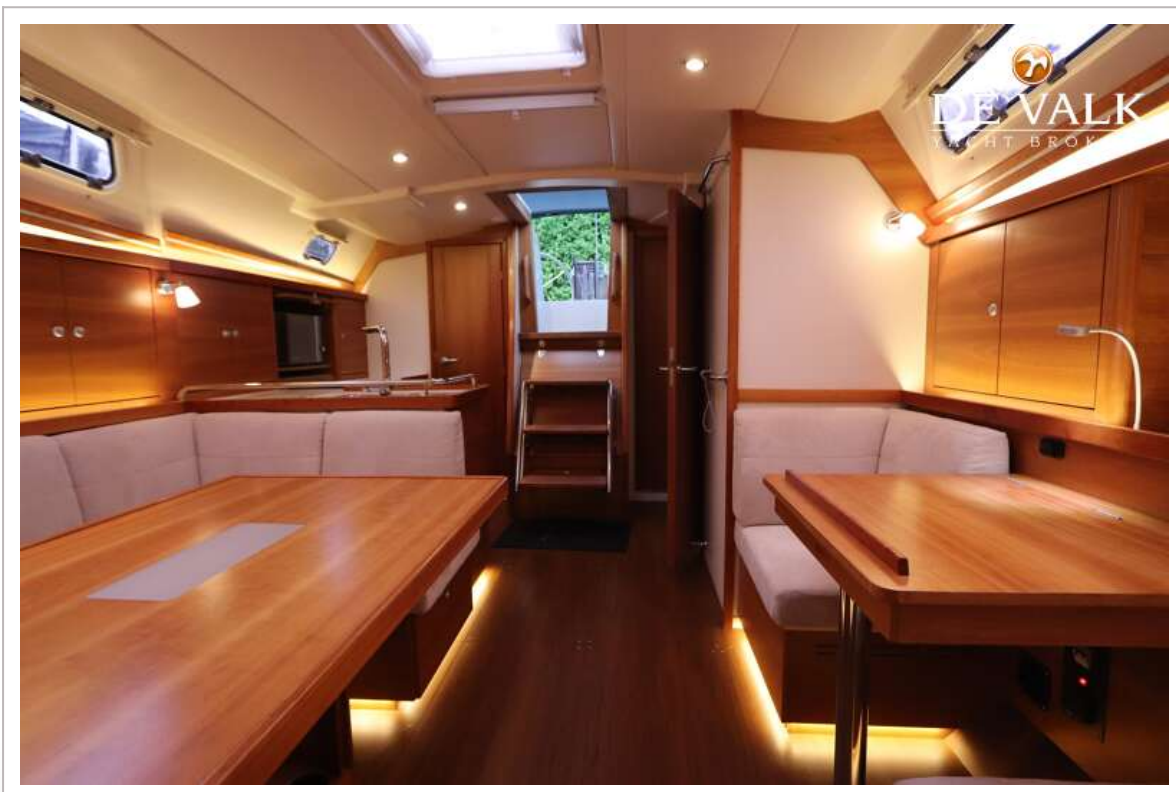
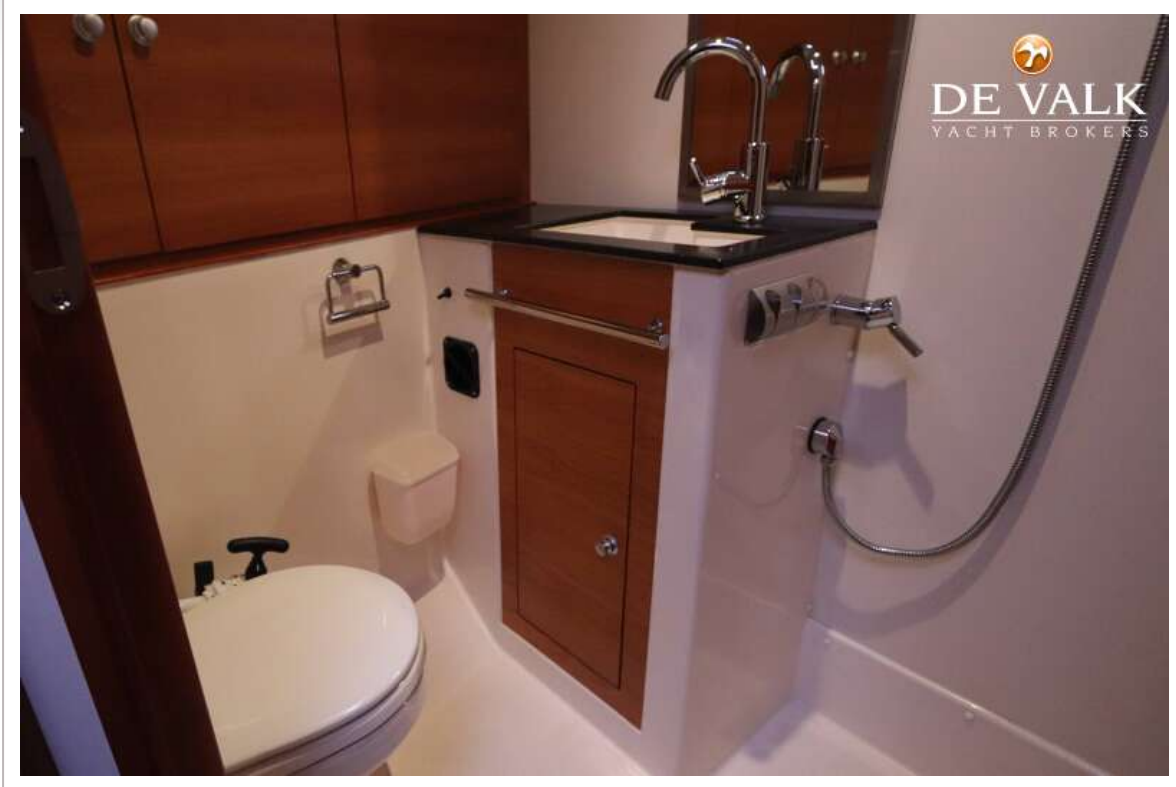
HANSE 430



HANSE 430



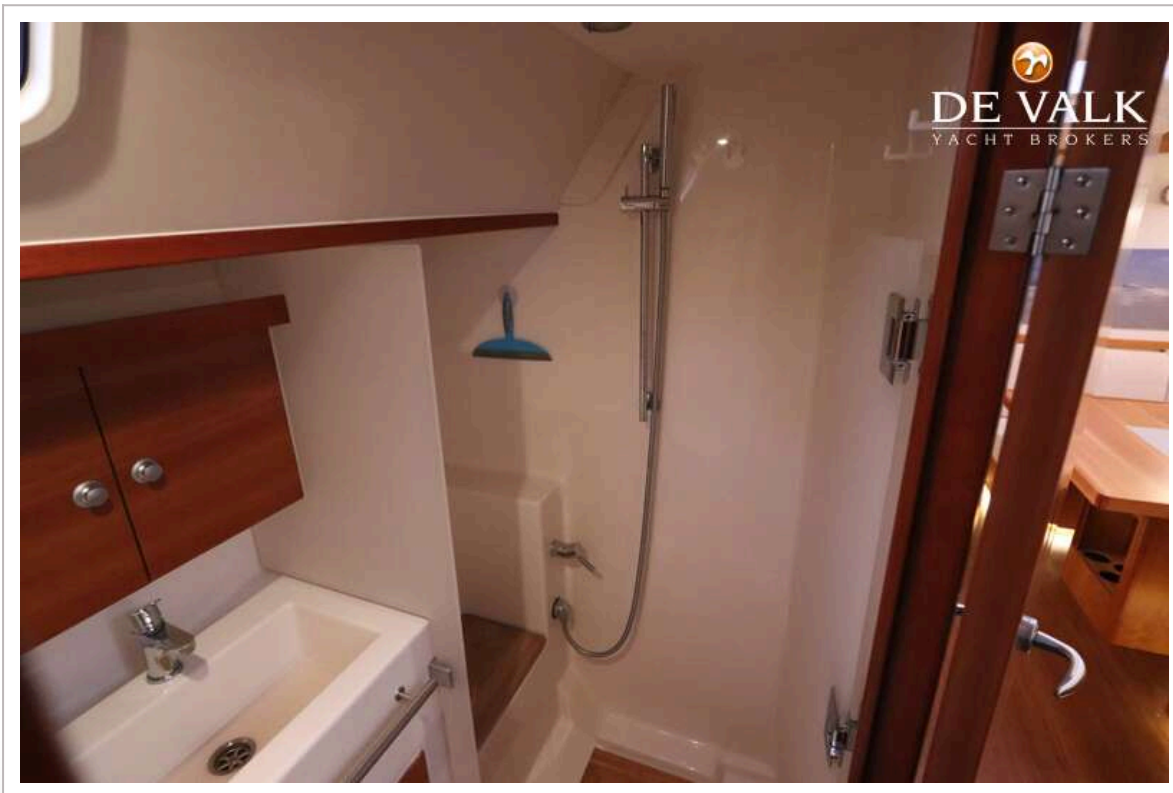
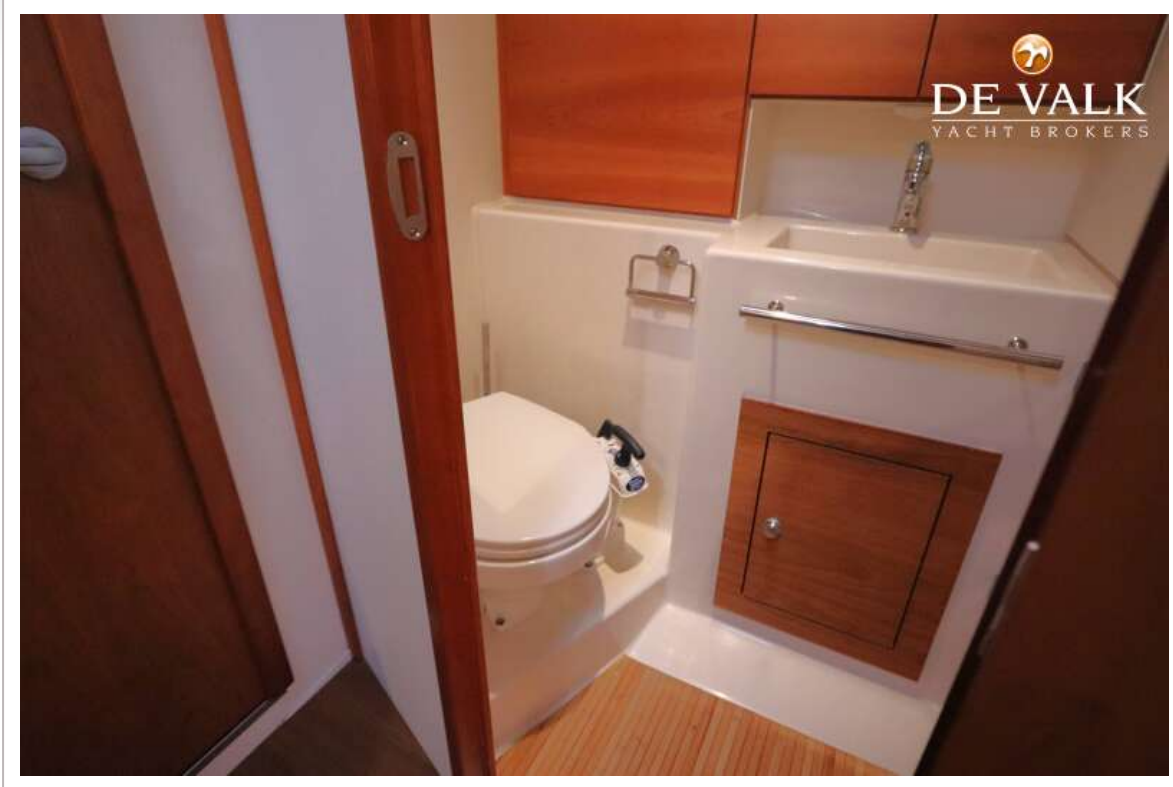
HANSE 430



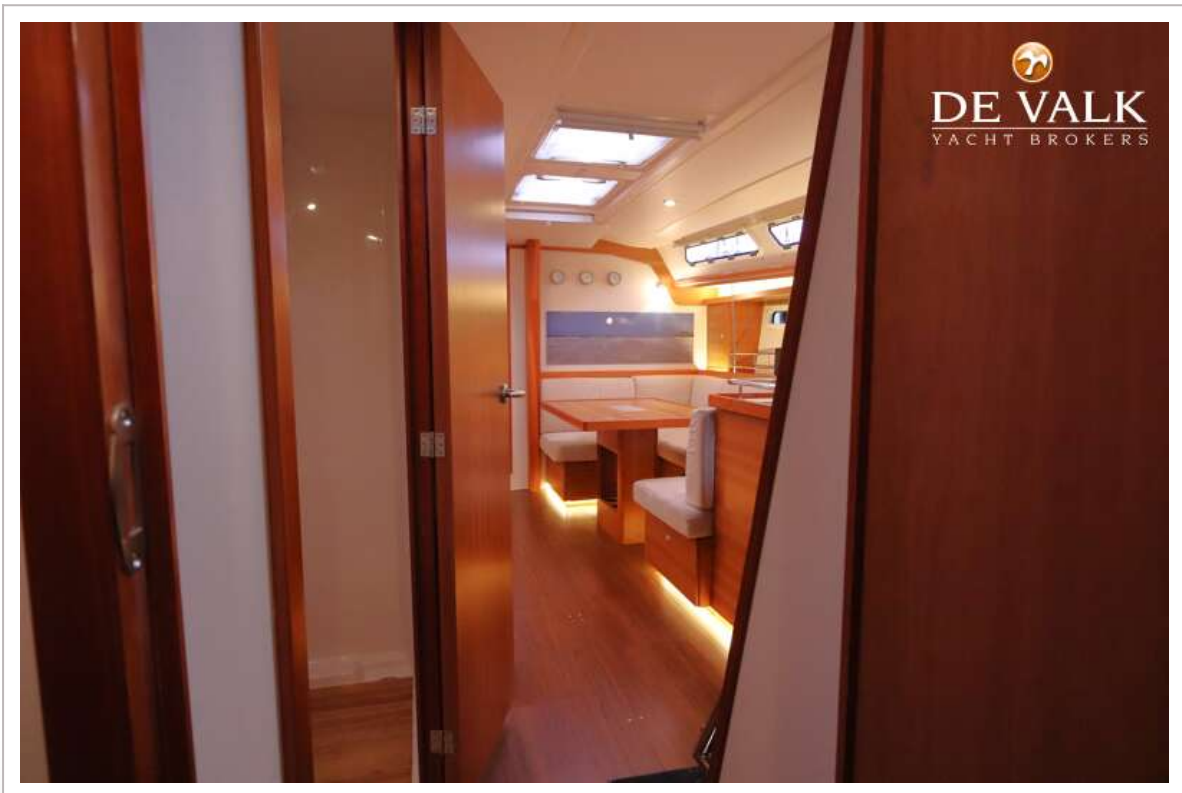
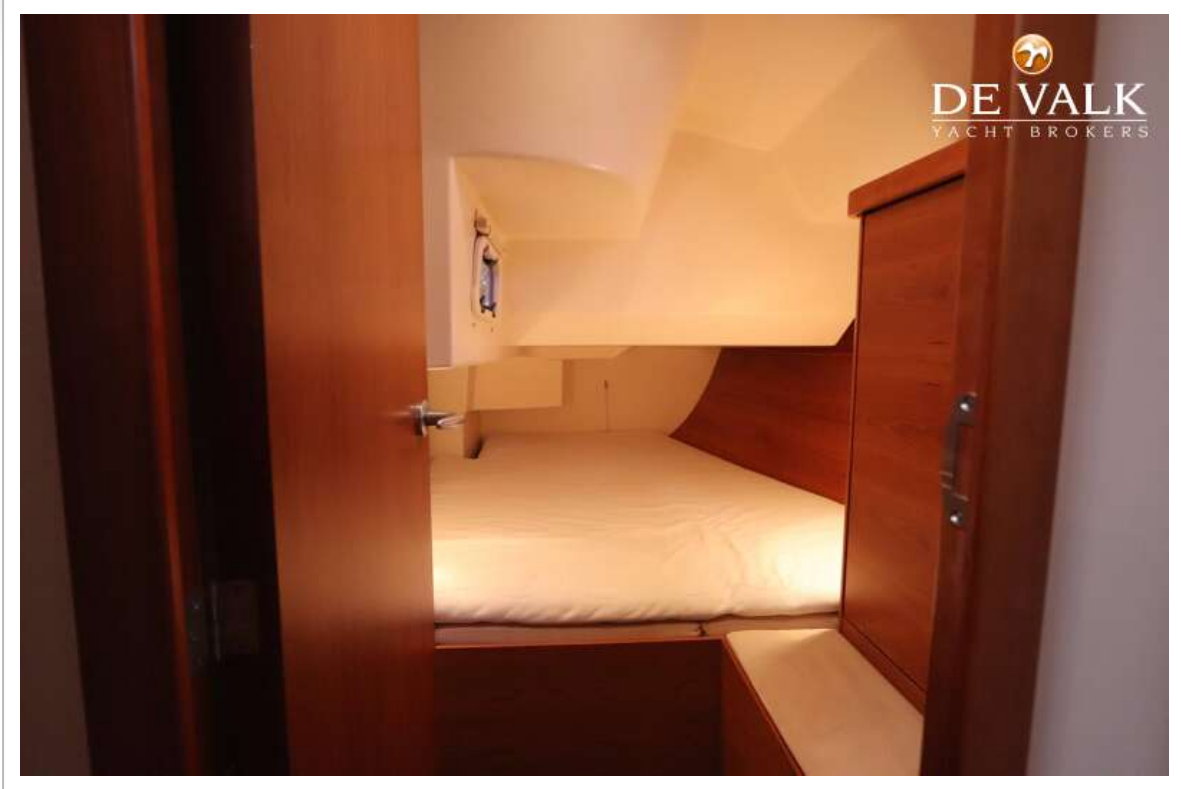
HANSE 430



HANSE 430



HANSE 430



HANSE 430



HANSE 430

