



DE VALK  
YACHT BROKERS



## BAVARIA 30 CRUISER



DE VALK  
YACHT BROKERS

# BAVARIA 30 CRUISER

## BROKER'S COMMENTS

This 2006 Bavaria 30 Cruiser is an absolute gem, lovingly maintained and upgraded by an owner who clearly believes boats deserve spa treatments too. In the last couple of seasons she's been spoiled with new sails, new sail covers, new mattresses, new heating and even a new autopilot (so now someone on board always knows where you're going). She's the popular 2-cabin version, offering proper comfort for cruising couples or small families. The interior is clean, warm and feels far younger than her passport might suggest. Mechanically and cosmetically she presents extremely well, ready to set off.

*Johan Nooitgedagt*

## SPECIFICATIONS

<b>Dimensions</b>	9.45 x 3.29 x 1.85 (m)	<b>Builder</b>	Bavaria Giebelstadt
<b>Built</b>	2006	<b>Cabins</b>	2
<b>Material</b>	GRP	<b>Berths</b>	6
<b>Engine(s)</b>	1 x Volvo D1-20 diesel	<b>Hp/Kw</b>	19.00 (hp), 13.98 (kw)
<b>Asking price</b>	Under Offer (VAT )	<b>Lying</b>	at sales office

## CONTACT

<b>Sales office</b>	De Valk Hindeloopen B.V.	<b>Telephone</b>	+31 514 52 40 00
<b>Address</b>	Oosterstrand 1 8713 JS Hindeloopen NL	<b>E-mail</b>	hindeloopen@devalk.nl

## DISCLAIMER

These particulars are given in good faith as supplied but cannot be guaranteed.



# BAVARIA 30 CRUISER

## GENERAL

<b>Model</b>	BAVARIA 30 CRUISER
<b>Type</b>	sailing yacht
<b>LOA (m)</b>	9,45
<b>LWL (m)</b>	8,25
<b>Beam (m)</b>	3,29
<b>Draft (m)</b>	1,85
<b>Air draft (m)</b>	14,15
<b>Headroom (m)</b>	1,95
<b>Year built</b>	2006
<b>Builder</b>	Bavaria Giebelstadt
<b>Country</b>	Germany
<b>Designer</b>	J & J Design
<b>Displacement (t)</b>	5,6
<b>Ballast (tonnes)</b>	cast iron 1 t
<b>CE norm</b>	A
<b>Hull material</b>	GRP
<b>Hull colour</b>	white
<b>Hull shape</b>	round-bilged
<b>Keel type</b>	fin keel
<b>Superstructure material</b>	GRP
<b>Rubbing strake</b>	aluminum
<b>Deck material</b>	GRP
<b>Deck finish</b>	non-skid moulded in
<b>Superstructure deck finish</b>	non-skid moulded in
<b>Cockpit deck finish</b>	teak
<b>Antifouling (year)</b>	2025
<b>Window frame</b>	aluminium
<b>Window material</b>	polycarbonate
<b>Deckhatch</b>	yes
<b>Fuel tank (litre)</b>	polyethylene 90 ltr.



# BAVARIA 30 CRUISER

Level indicator (fuel tank)	yes
Freshwater tank (litre)	polyethylene 150 ltr.
Level indicator (freshwater)	yes
Blackwater tank (litre)	polyethylene 60 ltr.
Blackwater tank extraction	deck extraction
Outside helm position	mechanical
Emergency tiller	yes

## ACCOMMODATION

Cabins	2
Berths	6
Interior	mahogany
Floor	teak and holly
Open cockpit	yes
Saloon	yes
Headroom saloon (m)	Aprox 1,85 mtr.
Heating	diesel ducted hot air 2025 Webasto Airtop Marine
Chart table	yes
Galley	L shaped
Countertop	Duropal
Sink	stainless steel
Cooker	calor gas 2 burner
Oven	In cooker
Fridge	yes
Water pressure system	electrical
Owners cabin	v-bed
Bed length (m)	2025 Mattress 1,95x1,89 mtr.
Wardrobe	hanging and shelves
Toilet	shared
Toilet system	manual Jabsco
Wash basin	at the toilet



# BAVARIA 30 CRUISER

<b>Guest cabin 1</b>	double bed
<b>Bed length (m)</b>	2025 Mattress 2,00 x1,68 mtr.
<b>Wardrobe</b>	hanging and shelves

## MACHINERY

<b>No of engines</b>	1
<b>Make</b>	Volvo
<b>Type</b>	D1-20
<b>HP</b>	19
<b>kW</b>	13.98
<b>Fuel</b>	diesel
<b>Maximum speed (kn)</b>	7
<b>Cruising speed (kn)</b>	5,5
<b>Consumption (l/hr)</b>	1
<b>Engine cooling system</b>	freshwater heat exchanger
<b>Drive</b>	sail-drive
<b>Saildrive seal</b>	2021
<b>Engine controls</b>	bowden cable
<b>Gearbox</b>	mechanical
<b>Exhaust</b>	watercooled
<b>Propeller type</b>	fixed
<b>Propeller blades</b>	2
<b>Manual bilge pump</b>	yes
<b>Electric bilge pump</b>	yes
<b>Batteries</b>	3
<b>Start battery</b>	1x VMF Sportline 12V 50Ah
<b>Service battery</b>	2025 2 x 110 Ah Vetus deep cycle
<b>Battery charger</b>	Quick SBC Advanced 251   12 v 25 A
<b>Shorepower</b>	with cable

## NAVIGATION



# BAVARIA 30 CRUISER

Compass	Plastimo
Multi control display	Raymarine ST60+ tridata
Depth sounder	Raymarine ST60+
Log	yes
Windset	Raymarine ST60 +
VHF	Silva S10
VHF handheld	Standard horizon submersible hx280e
Autopilot	2025 Raymarine EV. 100   P70s
Rudder angle indicator	yes

## EQUIPMENT

Sprayhood	2024 De vries maritiem
Cockpit table	yes
Bathing platform	yes
Boarding ladder	stainless steel
Anchor	CQR Plough
Anchor chain	yes
Sea railing	wire
Grab rail (superstructure)	stainless steel
Pushpit	yes
Pulpit	yes
Fenders	yes
Mooring lines	yes
Radio	Sony Xplod 52w x4
Speakers in salon	2x Power Dynamics
Clock - barometer	yes
Fire extinguisher	yes

## RIGGING

Rigging	sloop
Standing rigging	wire



# BAVARIA 30 CRUISER

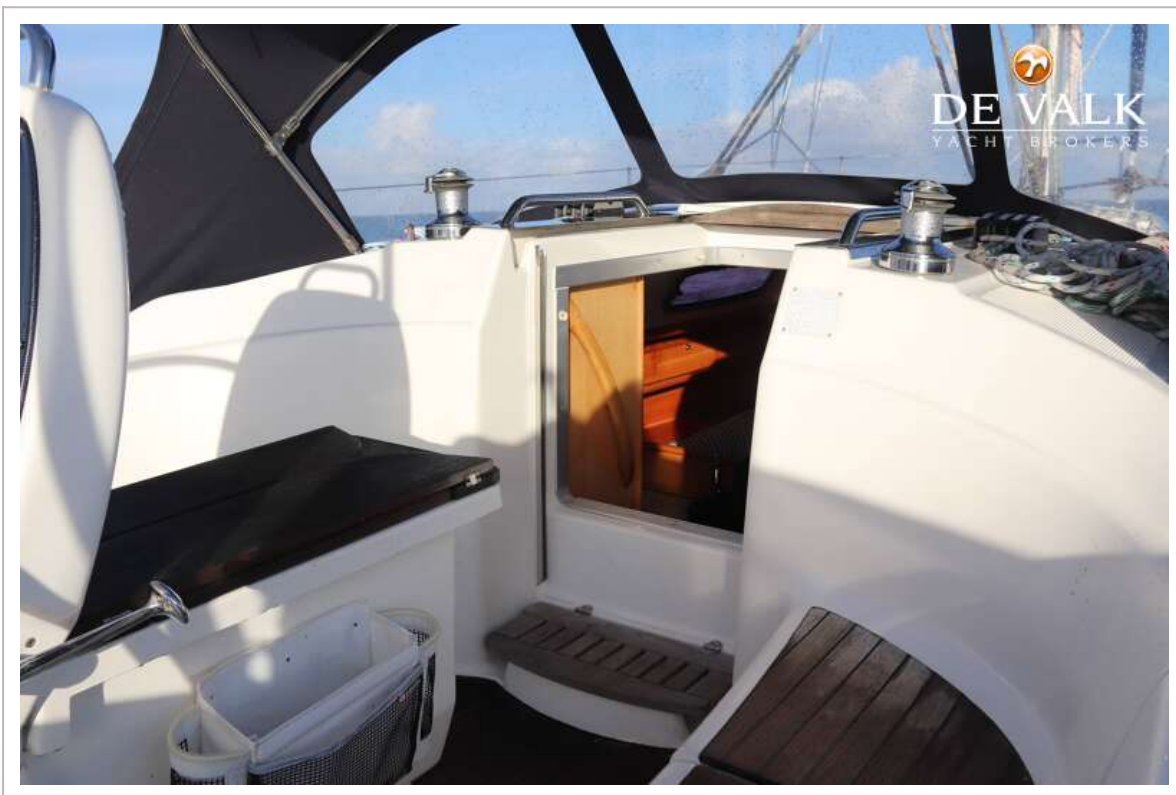
<b>Brand mast</b>	Seldén
<b>Material mast</b>	aluminium
<b>Spreaders</b>	Sigle
<b>Mainsail</b>	2025 De Vries Maritiem 24,2m <sup>2</sup>
<b>Mainsail cover</b>	2024 Maindrop with lazy jacks
<b>Fully battened mainsail</b>	yes
<b>Genoa I</b>	2025 De Vries Maritiem 20,8m <sup>2</sup>
<b>Stormjib</b>	yes
<b>Reefing System</b>	slabreefing
<b>Backstay adjuster</b>	tackle
<b>Boomvang</b>	tackle
<b>Genoa sheetwinches</b>	Lewmar 30 self tailing 2 speed
<b>Multifunctional winches</b>	Lewmar 18 self tailing 2 speed



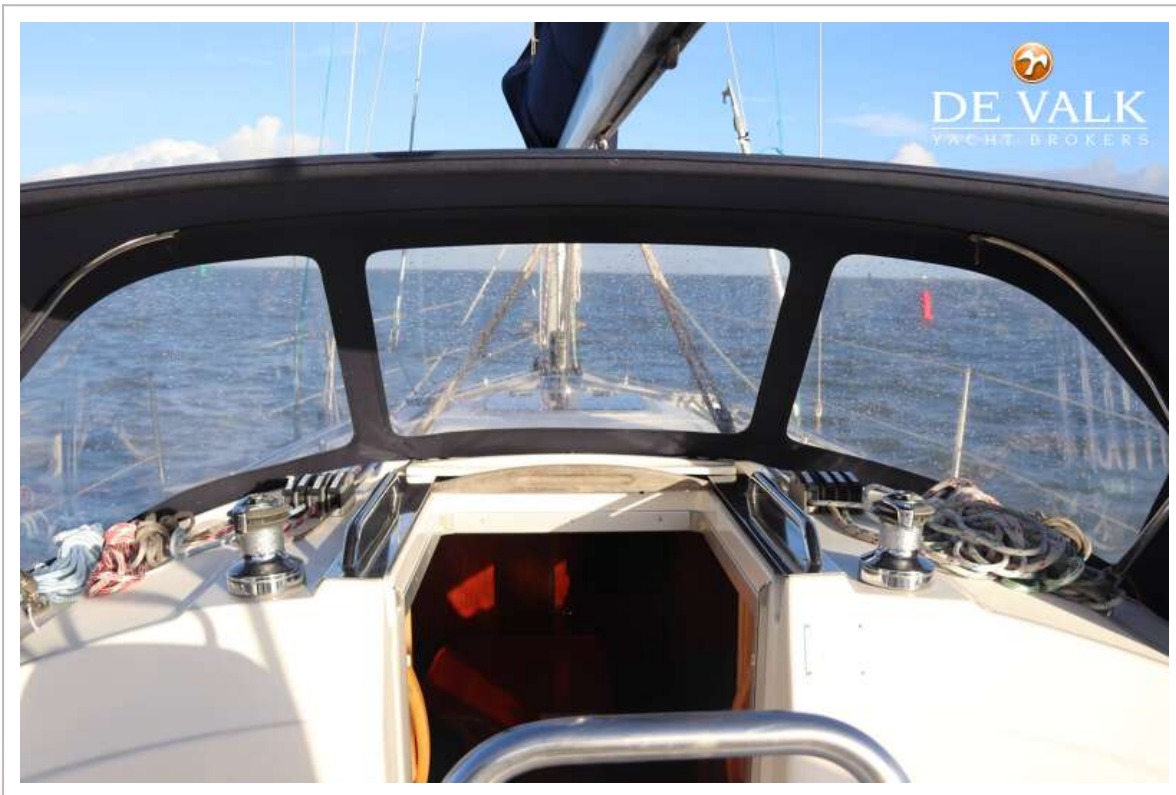
# BAVARIA 30 CRUISER



# BAVARIA 30 CRUISER



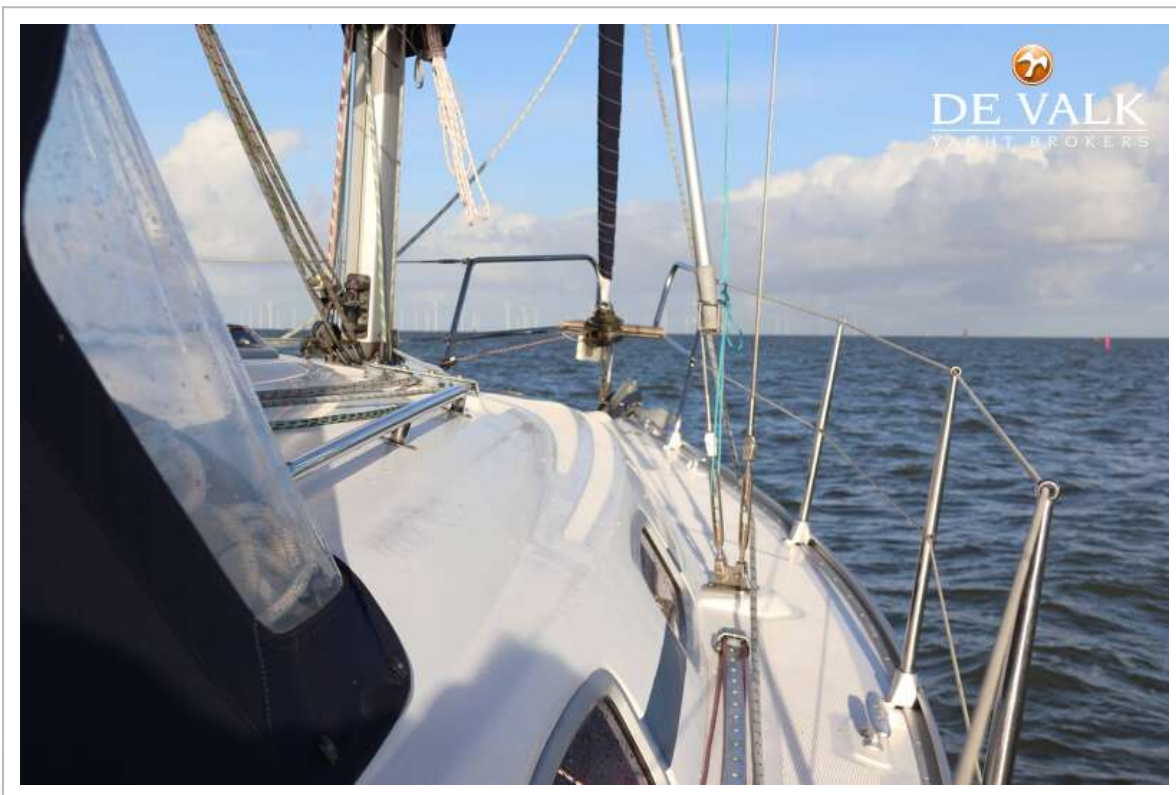
# BAVARIA 30 CRUISER



# BAVARIA 30 CRUISER



# BAVARIA 30 CRUISER



# BAVARIA 30 CRUISER



# BAVARIA 30 CRUISER



# BAVARIA 30 CRUISER



# BAVARIA 30 CRUISER



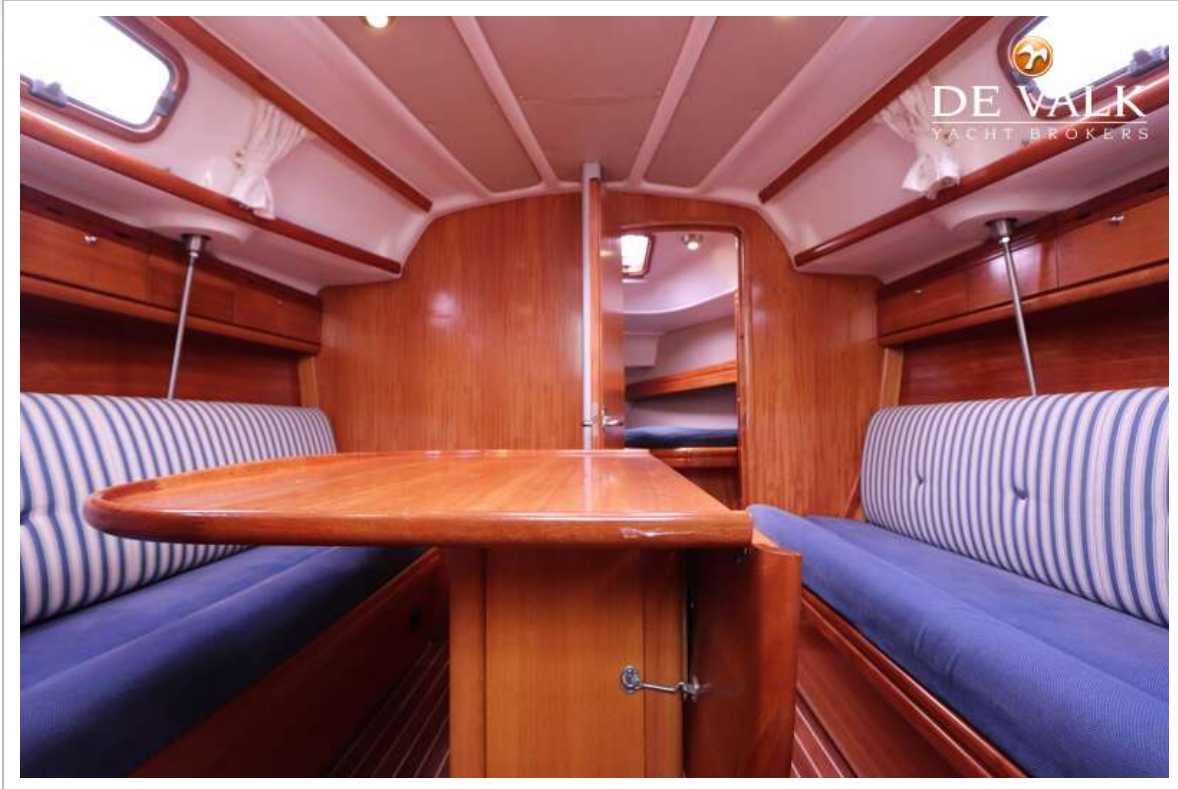
# BAVARIA 30 CRUISER



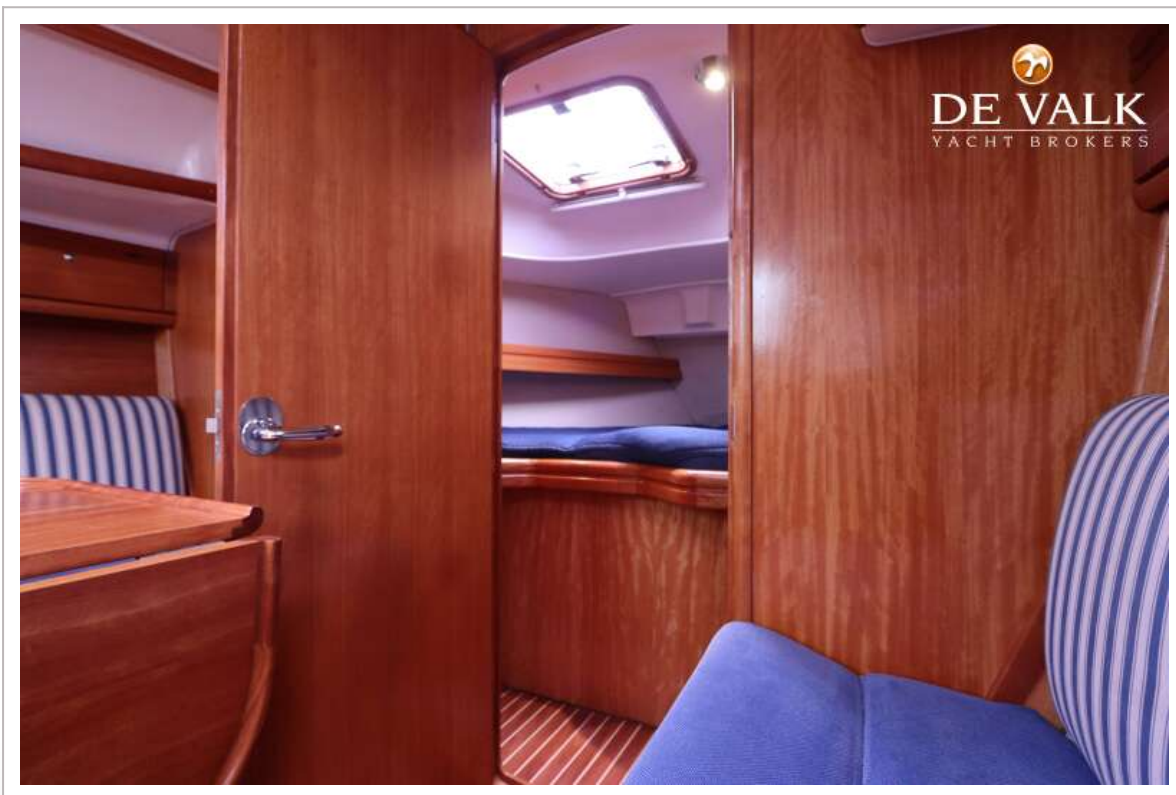
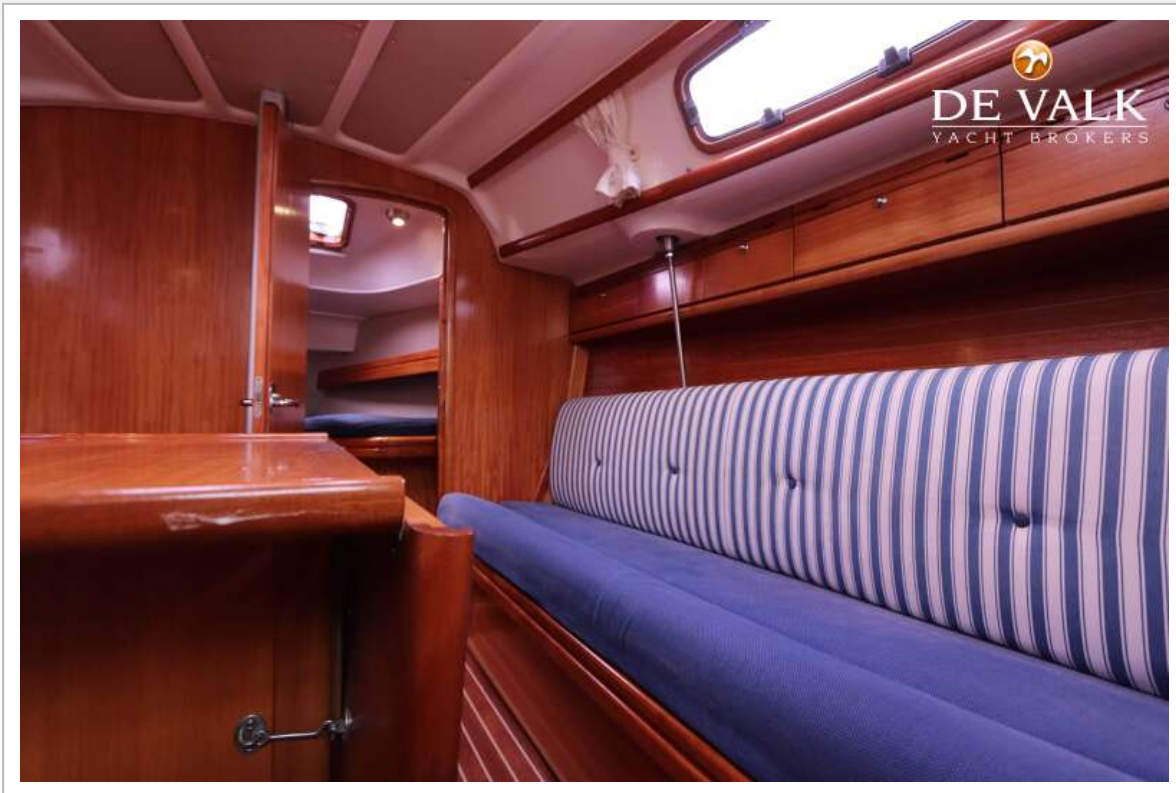
# BAVARIA 30 CRUISER



# BAVARIA 30 CRUISER



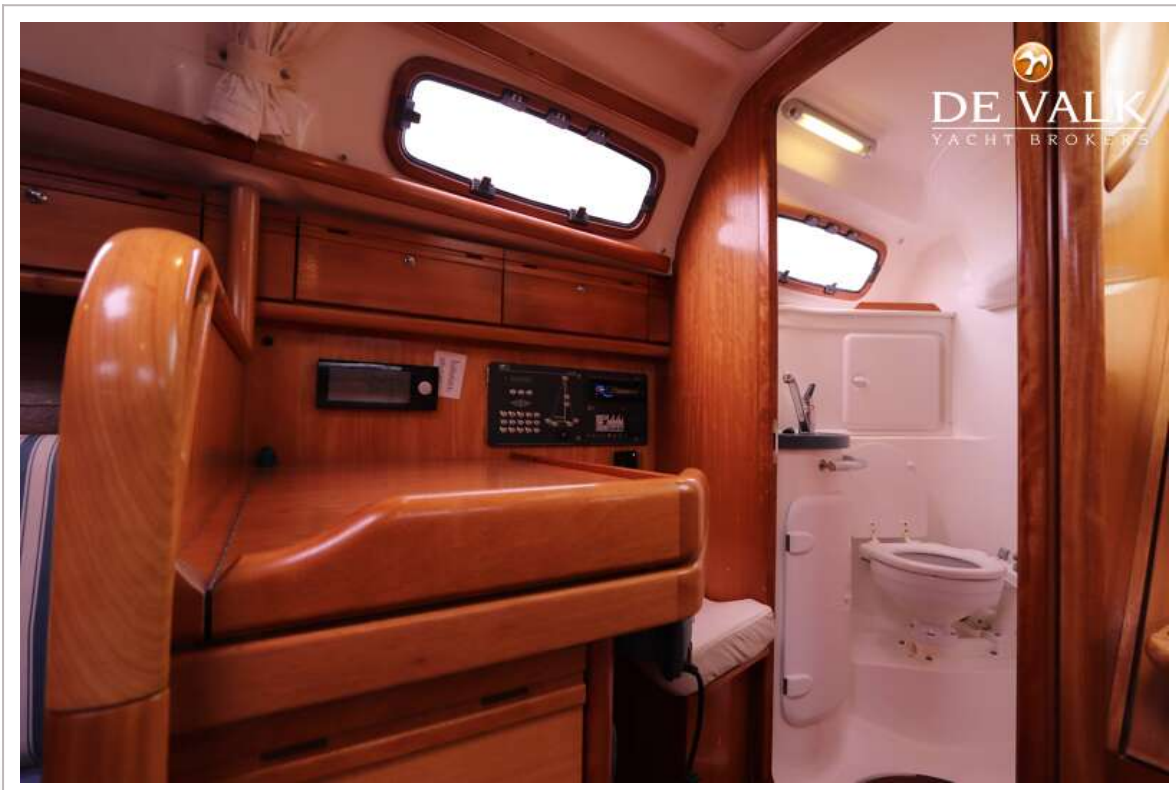
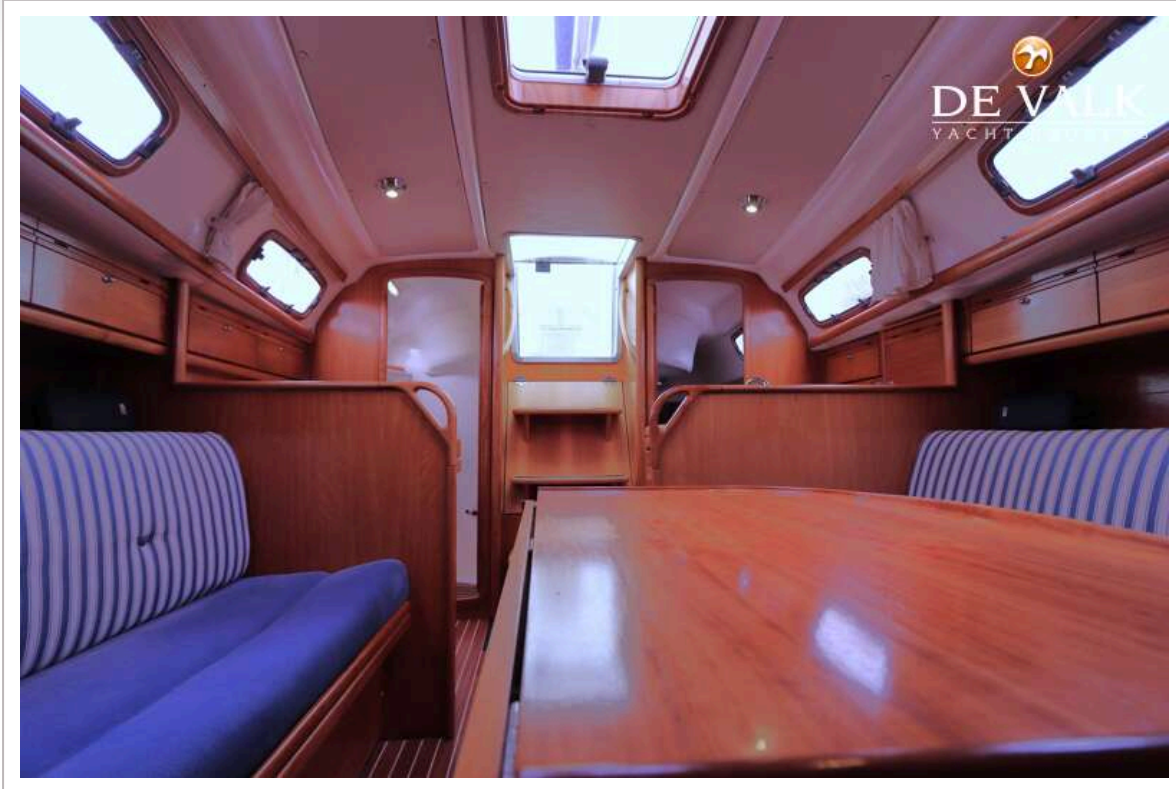
# BAVARIA 30 CRUISER



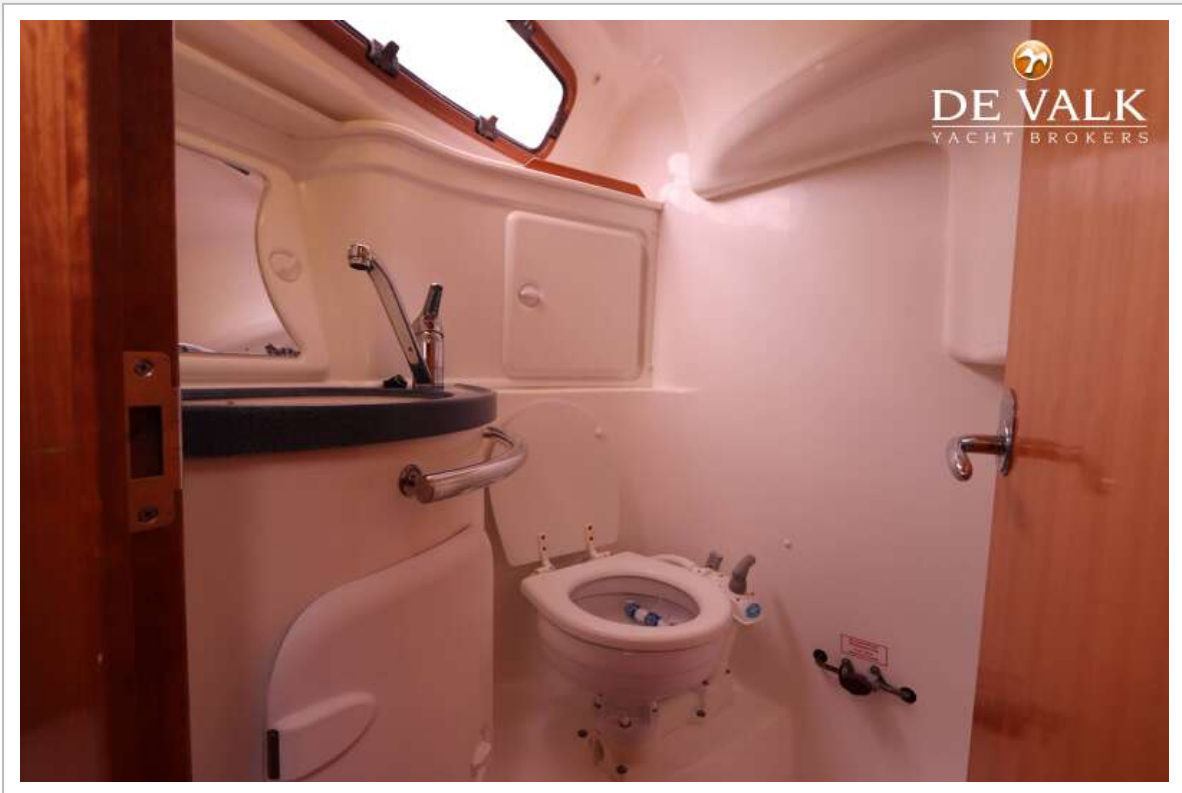
# BAVARIA 30 CRUISER



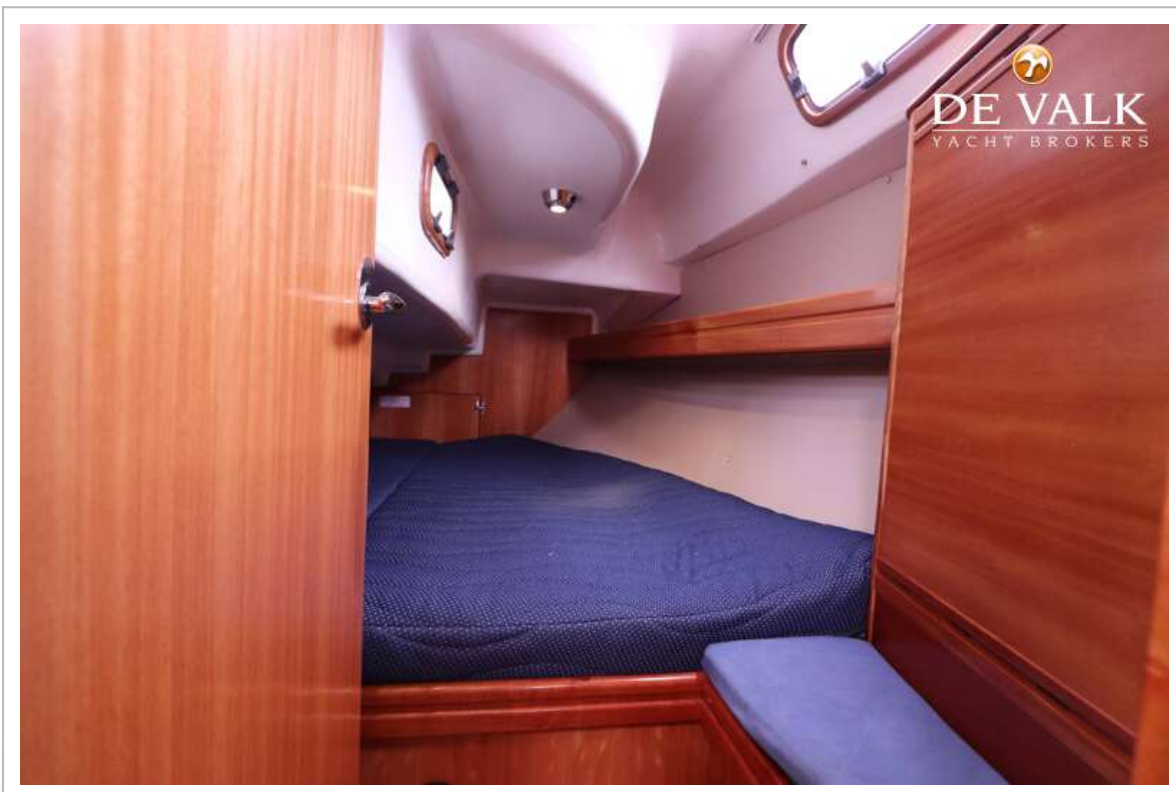
# BAVARIA 30 CRUISER



# BAVARIA 30 CRUISER



# BAVARIA 30 CRUISER



# BAVARIA 30 CRUISER



# BAVARIA 30 CRUISER

