



DE VALK
YACHT BROKERS



PACIFIC ALLURE 148



DE VALK
YACHT BROKERS

PACIFIC ALLURE 148

BROKER'S COMMENTS

"CAPT N HOOK" is a Pacific Allure 148, showcasing Dutch build quality and timeless lines. Powered by a single Iveco Aifo diesel, she cruises quietly, efficiently, and with low-maintenance operation. A new cabrio canopy and 2024 navigation electronics make her immediately ready to cruise. Bow and stern thrusters ensure effortless maneuvering, even in tight harbors. Central heating and a well-kept finish provide comfortable year-round living aboard. Recently professionally repainted, with wide side decks and robust deck hardware for safe passage on deck. A complete, well-kept Pacific Allure 148.

Jochem Heijermans

SPECIFICATIONS

Dimensions	14.95 x 4.60 x 1.30 (m)	Builder	Pacific Shipyard
Built	2008	Cabins	3
Material	Steel	Berths	6
Engine(s)	1 x Iveco Aifo 8016 M14 diesel	Hp/Kw	150.00 (hp), 110.40 (kw)
Asking price	€ 239.000 (VAT Paid)	Lying	

CONTACT

Sales office	De Valk Belgium	Telephone	+32 586 80 218
Address	1401 PT Nieuwpoort BE	E-mail	belgium@devalk.nl

DISCLAIMER

These particulars are given in good faith as supplied but cannot be guaranteed.



GENERAL

Model	PACIFIC ALLURE 148
Type	motor yacht
LOA (m)	14,95
Beam (m)	4,60
Draft (m)	1,30
Air draft (m)	3,50
Headroom (m)	2,00
Year built	2008
Builder	Pacific Shipyard
Country	The Netherlands
Displacement (t)	24
CE norm	C
Hull material	steel
Hull colour	white
Hull shape	hard chine
Keel type	long keel
Superstructure material	steel
Rubbing strake	stainless steel
Deck material	steel
Deck finish	non-skid paint
Superstructure deck finish	non-skid paint
Cockpit deck finish	non-skid paint
Antifouling (year)	2024
Window frame	aluminium Window frames re-sealed (2024)
Window material	tempered glass
Deckhatch	yes
Portholes	yes
Insulation	rockwool
Radar arch	collapsible
Mast can be lowered	manual



Fuel tank (litre)	steel 1200
Fuel tank 2 (litre)	yes
Freshwater tank (litre)	1600
Level indicator (freshwater)	yes
Blackwater tank (litre)	stainless steel 150
Blackwater tank extraction	pump
Greywater tank (litre)	300
Wheel steering	hydraulic
Inside helm position	yes
More info on paintwork	2021

ACCOMMODATION

Cabins	3
Berths	6
Interior	teak
Floor	carpet
Aft deck	yes
Saloon	yes
Headroom saloon (m)	2,00
Heating	central heating Webasto ThermoPro 90
Aft Cabin	yes
Dinette	yes
Opening door to aft deck	yes
Galley	yes
Countertop	wood
Sink	stainless steel
Cooker	induction AEG
Microwave/oven combi	Daevo
Fridge	yes
Freezer	yes
Hot water system	????



Water pressure system	electrical
Owners cabin	French bed
Wardrobe	hanging and shelves
Bathroom	en suite
Toilet	en suite Jabsco (2024)
Toilet system	electric
Wash basin	in the bathroom
Shower	en suite
Guest cabin 1	v-bed
Wardrobe	hanging and shelves
Bathroom	shared
Toilet	shared
Toilet system	electric Jabsco (2024)
Wash basin	at the toilet
Guest cabin 2	bunk bed
Wardrobe	hanging and shelves
Washing machine/dryer combi	Indesit

MACHINERY

No of engines	1
Make	Iveco Aifo
Type	8016 M14
HP	150
kW	110.40
Fuel	diesel
Year installed	2004
Engine cooling system	freshwater heat exchanger
Drive	shaft
Engine controls	bowden cable
Gearbox	hydraulic
Bowthruster	electric



Sternthruster	electric
Exhaust	watercooled
Thrust bearing	yes
Electric bilge pump	yes
Electrical installation	12V/24V/220V
Generator	silent separator Kohler
Running hours generator	2420
Batteries	yes
Start battery	2x 12V/55Ah
Service battery	6x 12V/140Ah
Generator battery	12V/55Ah
Battery monitor	yes
Battery charger/inverter	Victron Quattro 24V/3000W/70Ah
Insulation transformer	Victron

NAVIGATION

Compass	(2024)
Electric compass	Raymarine Autopilot (2024)
Multi control display	Raymarine i50 (2024)
VHF	Raymarine (2024)
Autopilot	Raymarine (2024)
Plotter/GPS	Raymarine Aixom 9 (2024)
AIS transceiver	Raymarine (2024)
Navigation lights	yes

EQUIPMENT

Cockpit cover	(2024)
Bimini	yes
Cockpit cushions	yes
Cockpit table	yes
Cockpit chairs	yes



Bathing platform	yes
Boarding ladder	stainless steel
Deck shower	yes
Anchor	yes
Windlass	electrical Remote controll
Capstan	yes
Sea railing	stainless steel
Grab rail (superstructure)	stainless steel
Railing side opening gates	2x
Pushpit	yes
Pulpit	yes
Fenders	yes
Mooring lines	yes
TV	yes
Extinguisher in engine room	yes



PACIFIC ALLURE 148



PACIFIC ALLURE 148



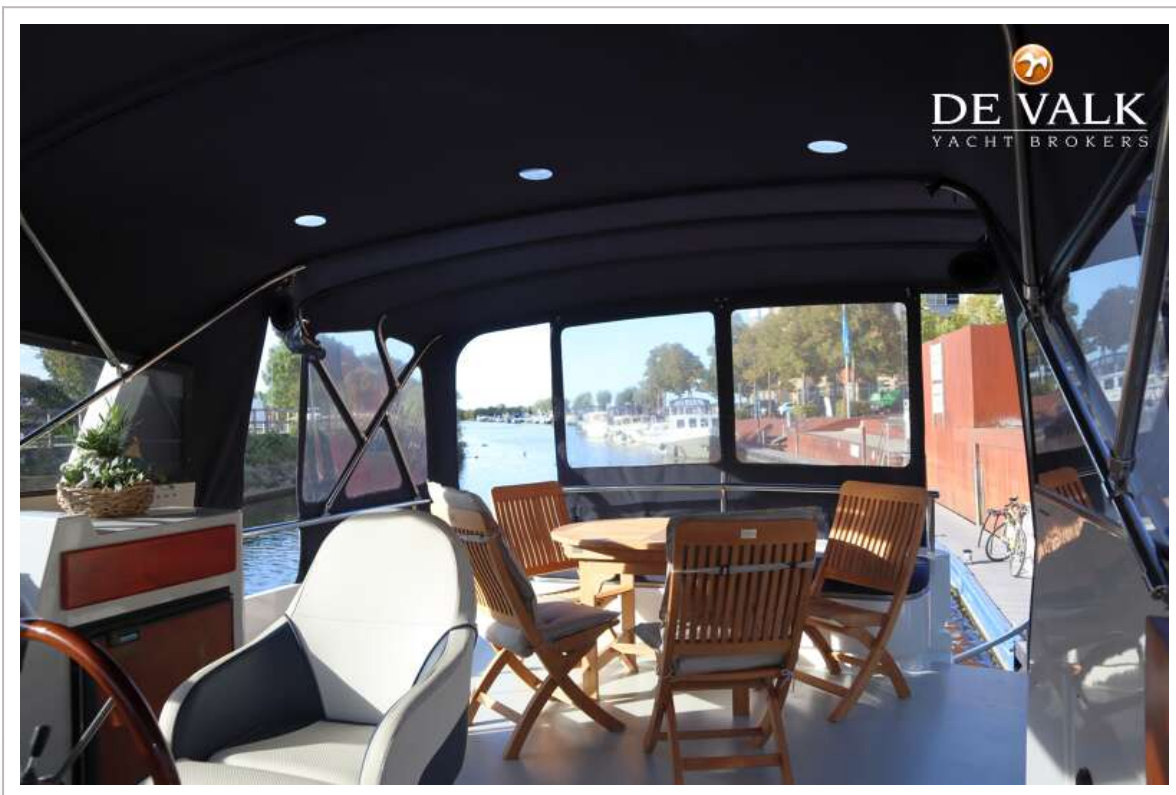
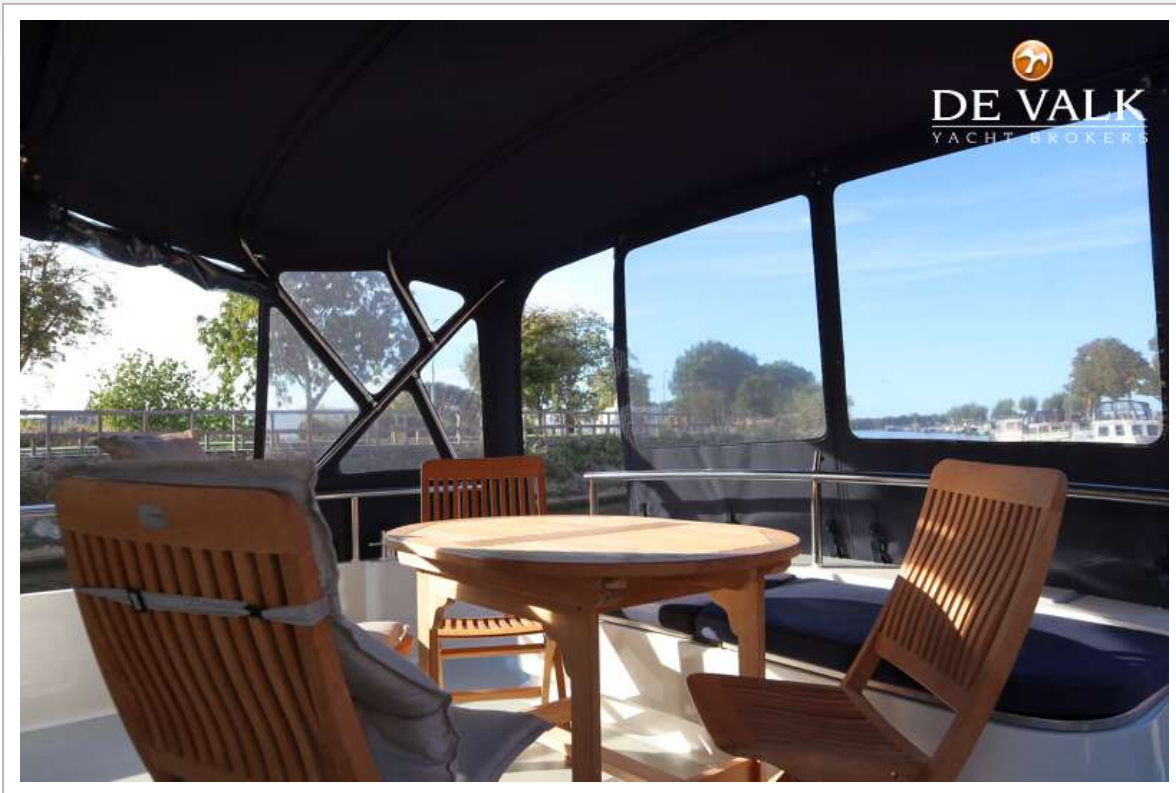
PACIFIC ALLURE 148



PACIFIC ALLURE 148

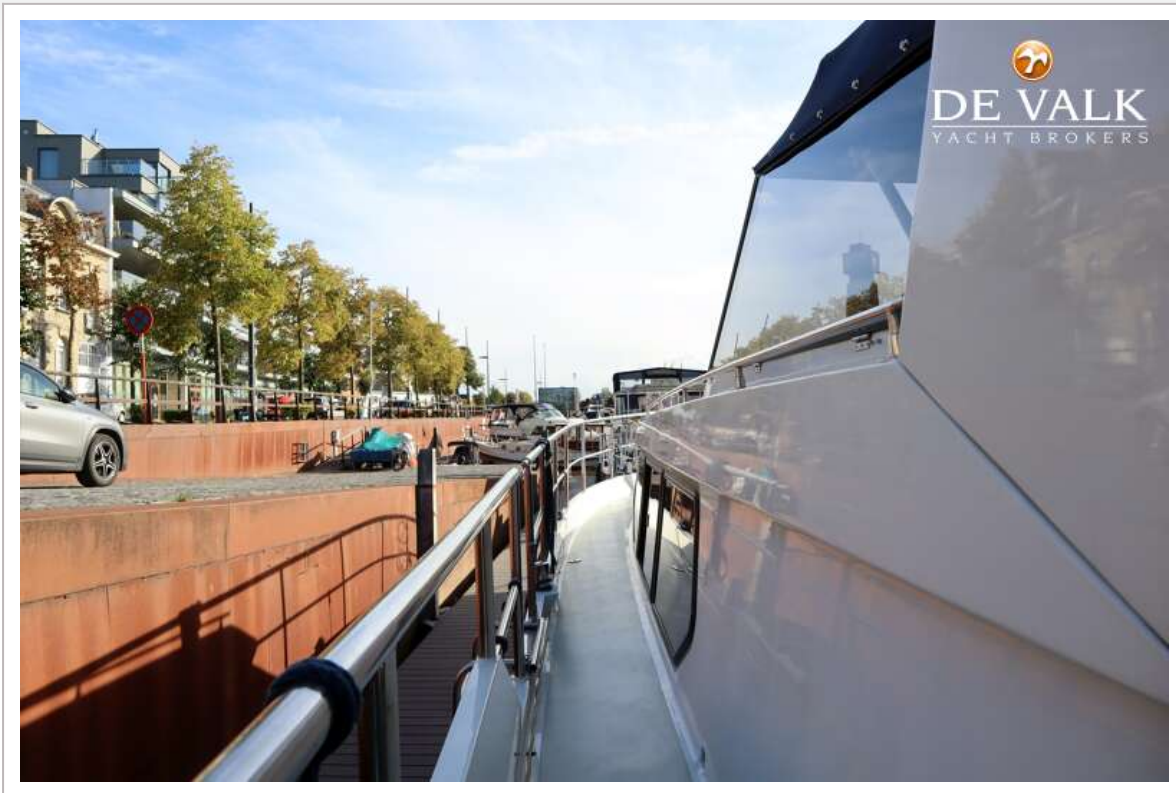


PACIFIC ALLURE 148



PACIFIC ALLURE 148





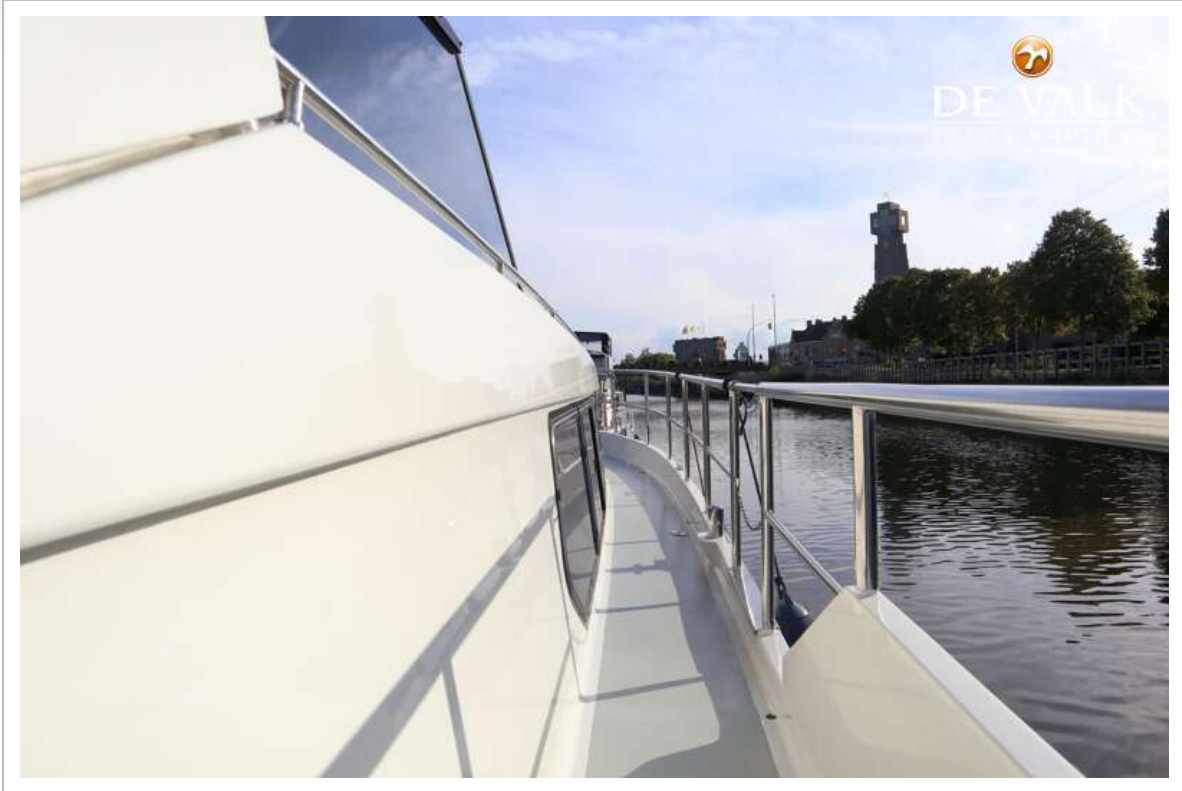
PACIFIC ALLURE 148



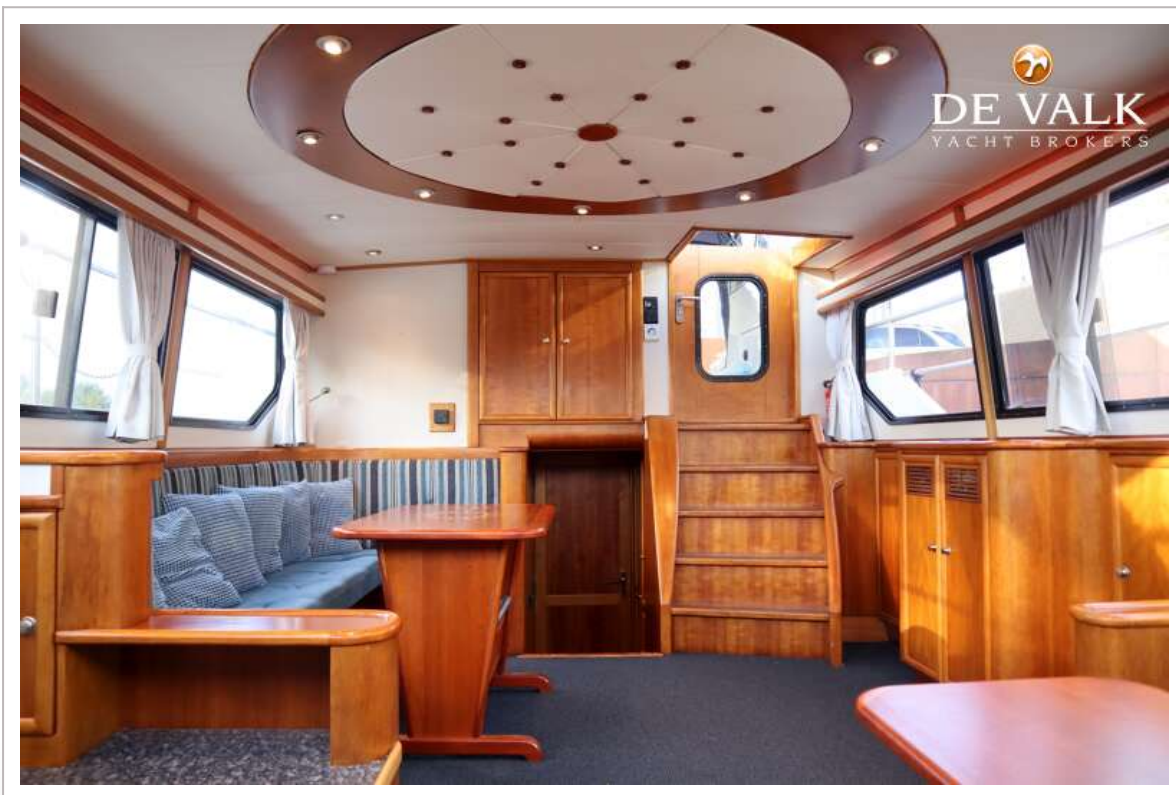
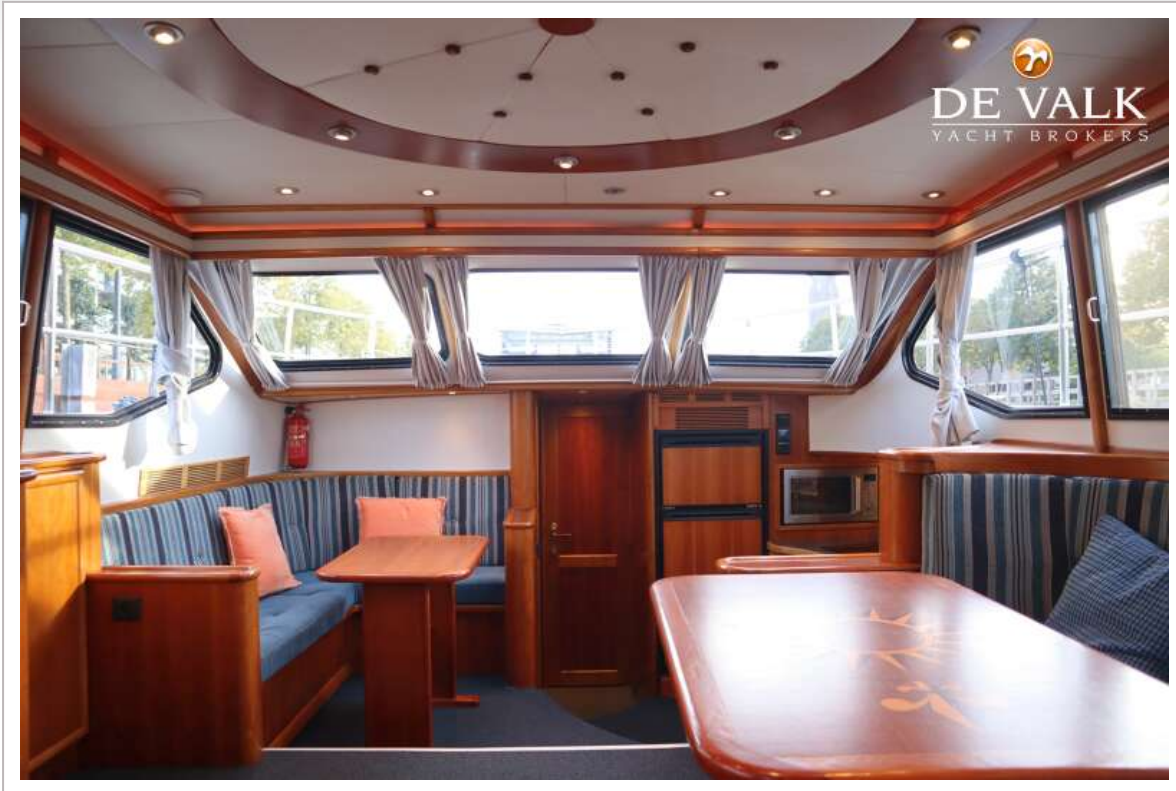
PACIFIC ALLURE 148



PACIFIC ALLURE 148



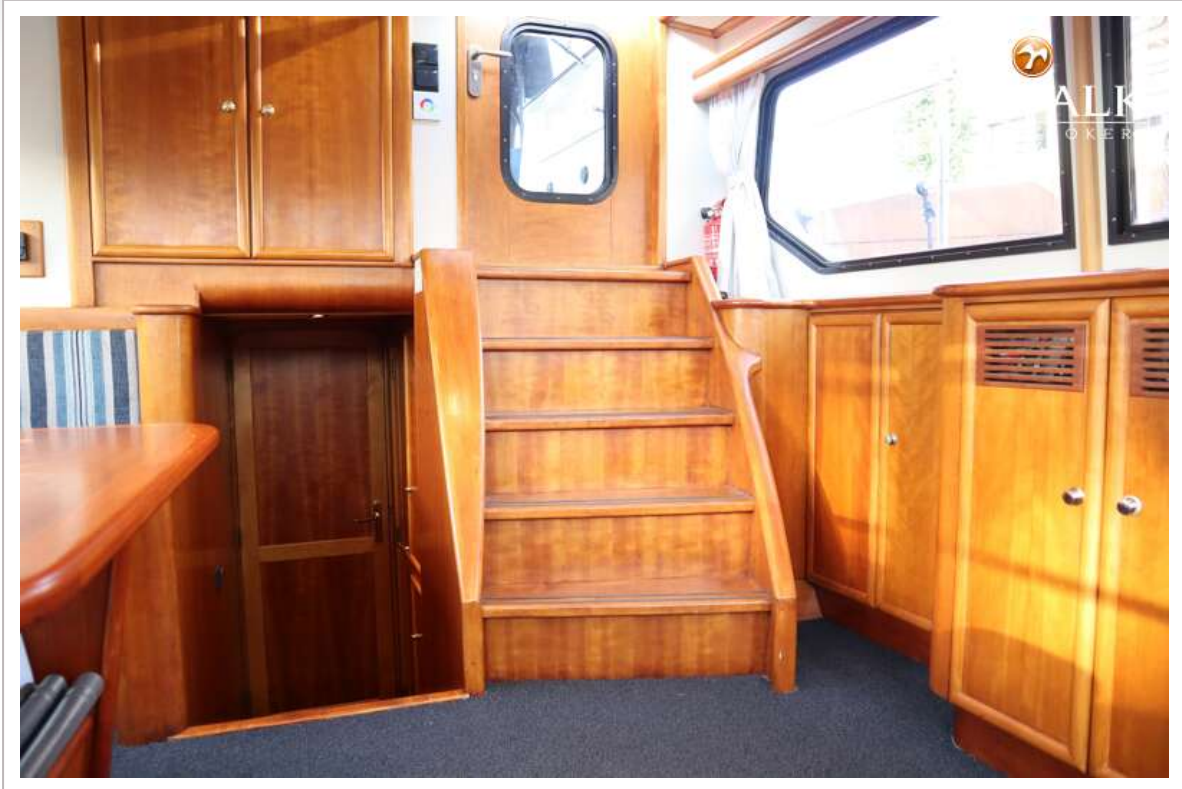
PACIFIC ALLURE 148



PACIFIC ALLURE 148

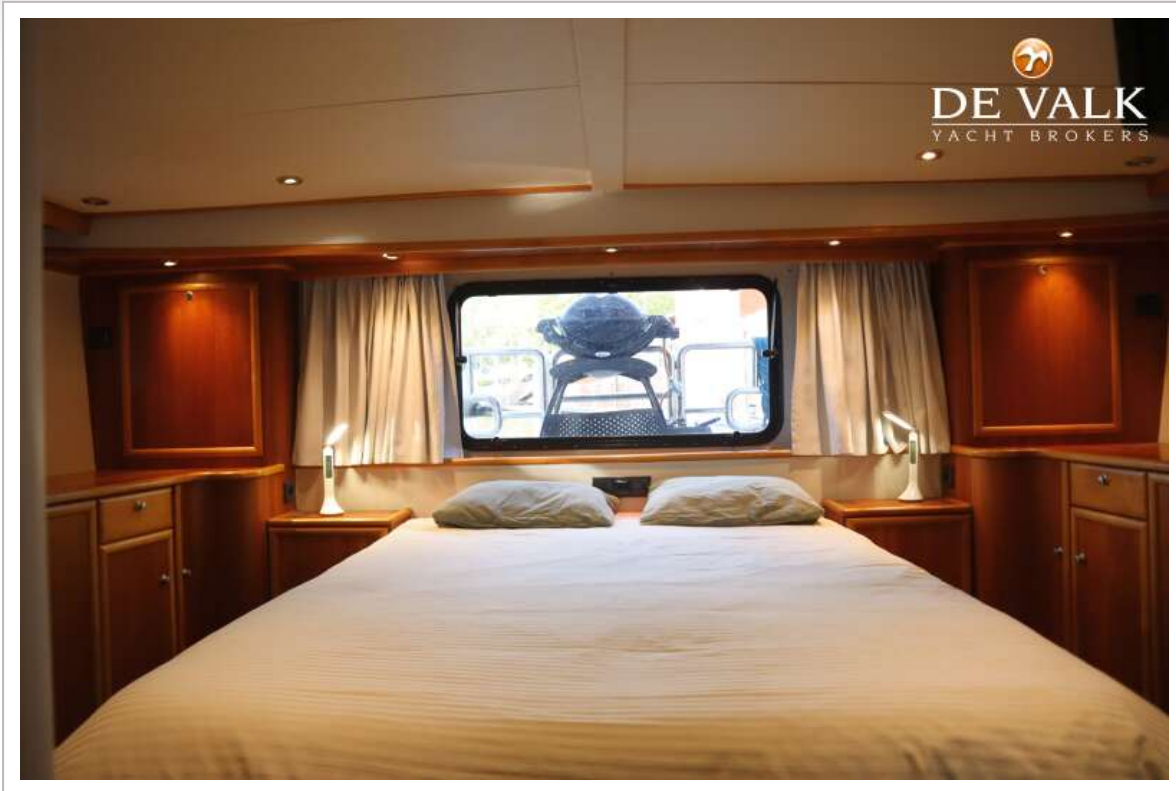


PACIFIC ALLURE 148



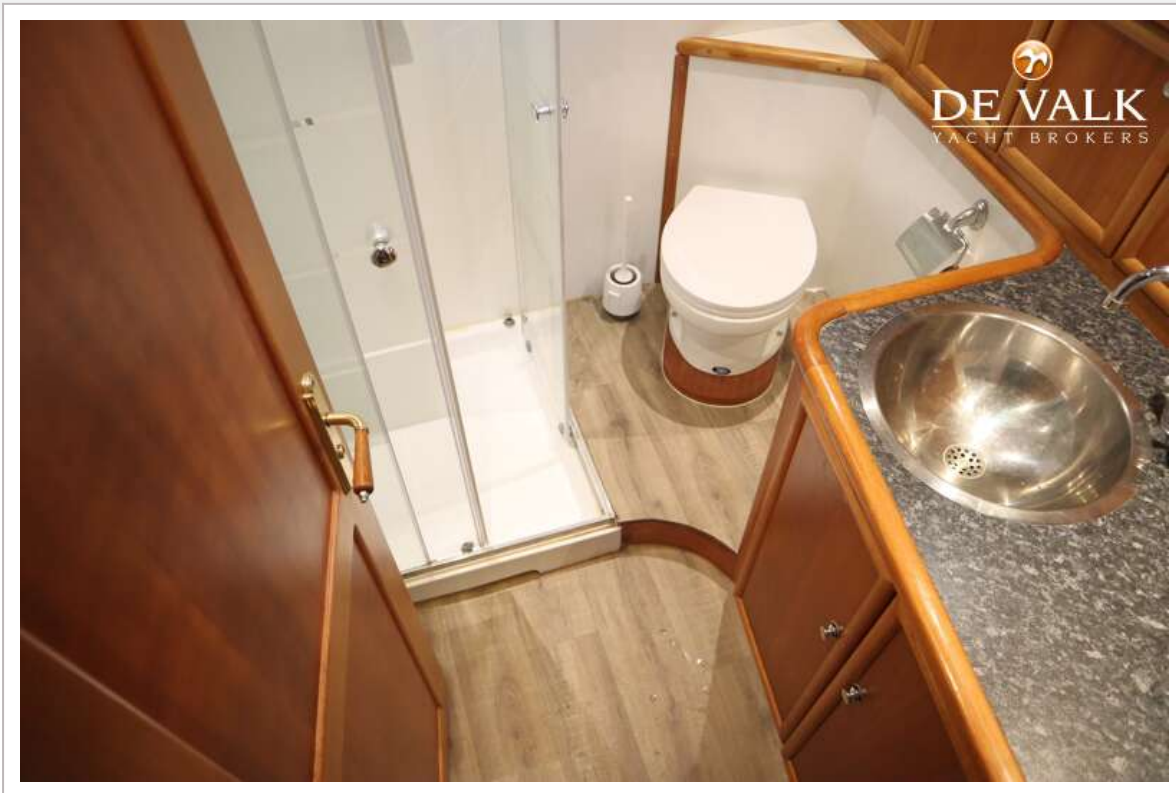
PACIFIC ALLURE 148

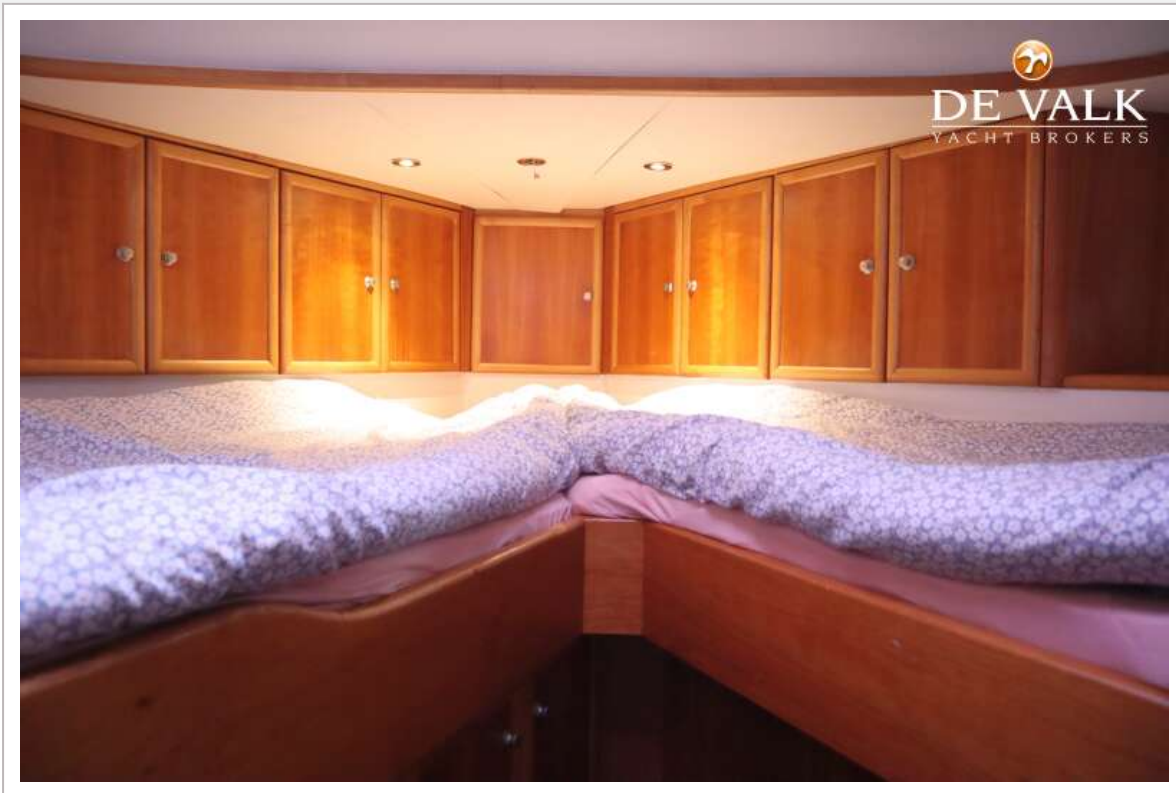






PACIFIC ALLURE 148





PACIFIC ALLURE 148



PACIFIC ALLURE 148

