



DE VALK  
YACHT BROKERS



BARKAS 1200 OK



DE VALK  
YACHT BROKERS

# BARKAS 1200 OK

## BROKER'S COMMENTS

Beautifully Maintained Barkas 1200 Ready for Any Adventure on the Water. Thanks to its generous beam, this sturdy motor yacht offers surprisingly spacious living areas and comfort on board. The sense of space translates into a pleasant touch of luxury you'll enjoy on every journey. The entire exterior has been freshly painted with a durable 2-component paint system. New window frames with double glazing and central heating make it perfect for all seasons. The solar panels provide for your own energy needs, and best of all-you can steer from shore. With 1 remote control, you have all control

*Jeanne Stukstette*

## SPECIFICATIONS

<b>Dimensions</b>	12.80 x 4.05 x 1.10 (m)	<b>Builder</b>	Barkas
<b>Built</b>	1999	<b>Cabins</b>	2
<b>Material</b>	Steel	<b>Berths</b>	5
<b>Engine(s)</b>	1 x Nanni 4.100 diesel	<b>Hp/Kw</b>	100.00 (hp), 73.60 (kw)
<b>Asking price</b>	Under Offer (VAT )	<b>Lying</b>	at sales office

## CONTACT

<b>Sales office</b>	De Valk Limburg	<b>Telephone</b>	+31 630372559
<b>Address</b>	Schippersveld 3 6019 DE Wessem NL	<b>E-mail</b>	limburg@devalk.nl

## DISCLAIMER

These particulars are given in good faith as supplied but cannot be guaranteed.



# BARKAS 1200 OK

## GENERAL

<b>Model</b>	BARKAS 1200 OK
<b>Type</b>	motor yacht
<b>LOA (m)</b>	12,80
<b>Beam (m)</b>	4,05
<b>Draft (m)</b>	1,10
<b>Air draft min (m)</b>	2,70
<b>Headroom (m)</b>	1,95
<b>Year built</b>	1999
<b>Builder</b>	Barkas
<b>Hull material</b>	steel
<b>Hull colour</b>	orange
<b>Hull thickness (mm)</b>	6 mm
<b>Hull shape</b>	multi hard chine
<b>Superstructure material</b>	steel
<b>Superstructure (mm)</b>	5 mm
<b>Deck material</b>	steel
<b>Deck finish</b>	non-skid paint
<b>Cockpit deck finish</b>	teak
<b>Antifouling (year)</b>	2024
<b>Dorades</b>	yes
<b>Window frame</b>	polymer TOP WINDOWS
<b>Window material</b>	double glazing
<b>Deckhatch</b>	1x Double glazing
<b>Portholes</b>	polymer Double / Dubbel / Doppel glas
<b>Mast can be lowered</b>	electric
<b>Fuel tank (litre)</b>	steel 500 Li
<b>Level indicator (fuel tank)</b>	visual
<b>Fuel daytank (litre)</b>	stainless steel 70Li
<b>Freshwater tank (litre)</b>	stainless steel 500 Li
<b>Level indicator (freshwater)</b>	yes



# BARKAS 1200 OK

<b>Blackwater tank (litre)</b>	stainless steel 200 Li
<b>Level indicator (blackwater)</b>	yes
<b>Wheel steering</b>	hydraulic
<b>More info on paintwork</b>	2024 COMPLETE NEW 2C PAINTSYSTEM
<b>Extra info</b>	2024 NEW ISOLATED TENT
<b>Extra info</b>	ELECTRONIC DOOR LOCK

## ACCOMMODATION

<b>Cabins</b>	2
<b>Berths</b>	5
<b>Floor</b>	teak
<b>Open cockpit</b>	yes
<b>Headroom saloon (m)</b>	1,97
<b>Heating</b>	central heating KABOLA
<b>Opening door to aft deck</b>	yes
<b>Galley</b>	yes
<b>Countertop</b>	corian
<b>Sink</b>	stainless steel
<b>Cooker</b>	electric Wallas 2x
<b>Fridge</b>	1xIsotherm
<b>Freezer</b>	Isotherm
<b>Hot water system</b>	HR 400 COMBI
<b>Owners cabin</b>	double bed 1,65x2,0
<b>Bed length (m)</b>	2,0
<b>Wardrobe</b>	hanging 2x
<b>Bathroom</b>	separate
<b>Toilet</b>	separate
<b>Toilet system</b>	electric
<b>Wash basin</b>	in the bathroom
<b>Shower</b>	separate
<b>Guest cabin 1</b>	double bed + single bed 1,5x2,0 + 0,8x2,1



Bed length (m) 2,0 + 2,1

## MACHINERY

No of engines	1
Make	Nanni
Type	4.100
HP	100
kW	73.60
Fuel	diesel
Year installed	2010
Cruising speed (kn)	7
Consumption (l/hr)	3
Engine cooling system	freshwater heat exchanger
Drive	shaft
Engine controls	electrical
Bowthruster	electric
Sternthruster	electric VETUS
Propeller type	fixed
Shaft lubrication	grease
Electric bilge pump	yes
Batteries	yes
Start battery	2023
Service battery	304Ah LIFEPO4
Bowthruster battery	2023
Sternthruster battery	2023
Battery monitor	CERBO GX + DISPLAY Victron
Battery charger/inverter	Victron 3000
Solar panel	10X115Wp
Shorepower	with cable
Insulation transformer	Victron



## NAVIGATION

Compass	RAYMARINE
Multi control display	yes
Depth sounder	RAYMARINE
VHF	RAYMARINE
Autopilot	RAYMARINE WITH REMOTE
Rudder angle indicator	RAYMARINE
GPS	RAYMARINE
Plotter	RAYMARINE
AIS receiver	RAYMARINE
Camera	2x RAYMARINE
Navigation lights	yes
Extra info	HYDRONAUTICS STEERING COMPLETE REMOTE

## EQUIPMENT

Cockpit cover	NEW 2024
Cockpit table	yes
Cockpit chairs	yes
Bathing platform	yes
Boarding ladder	yes
Gangway	yes
Deck shower	yes
Anchor	Bruce 1500W ELECTRIC LOFRANS
Anchor chain	yes
Deck wash	yes
Davits	stainless steel
Davits controls	HYDRAULIC
Wiper	yes
Horn	yes
Fenders	yes
Mooring lines	yes



# BARKAS 1200 OK

TV	yes
Radio	yes
Speakers in salon	yes
Fire extinguisher	yes
Extra info	DIESEL TANK CLEANED 2025



# BARKAS 1200 OK



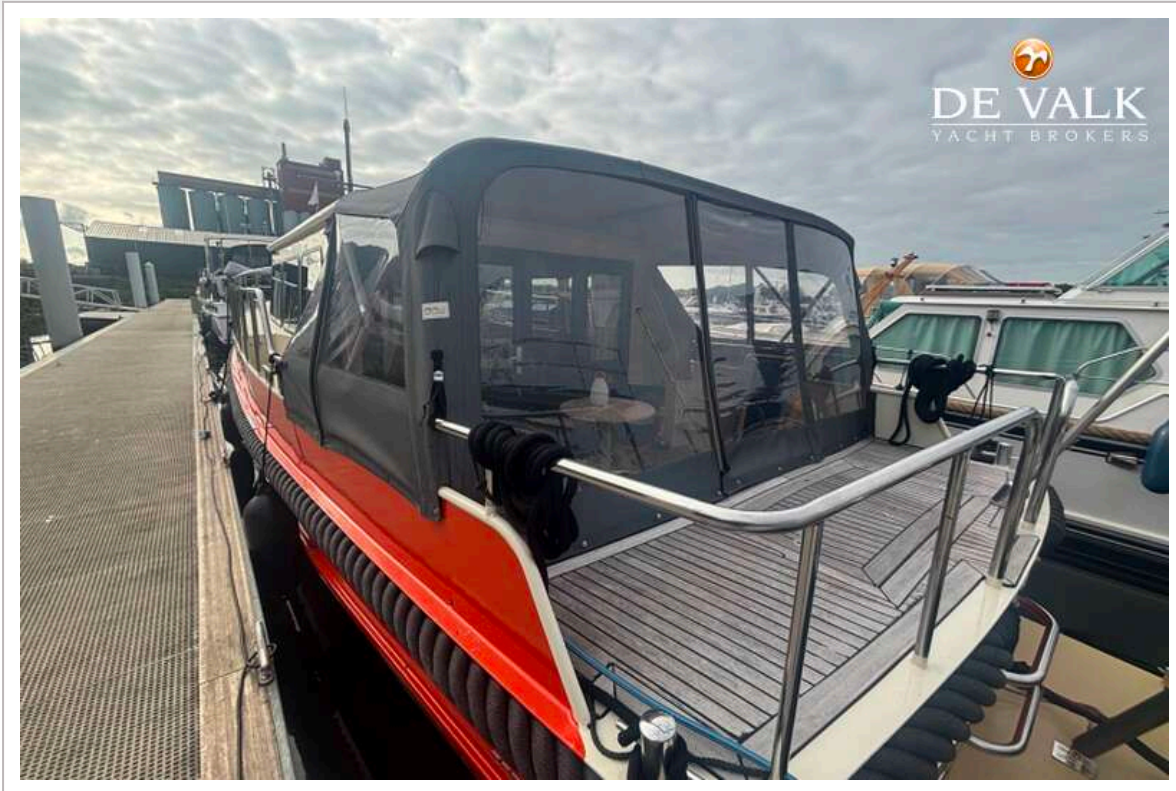
# BARKAS 1200 OK



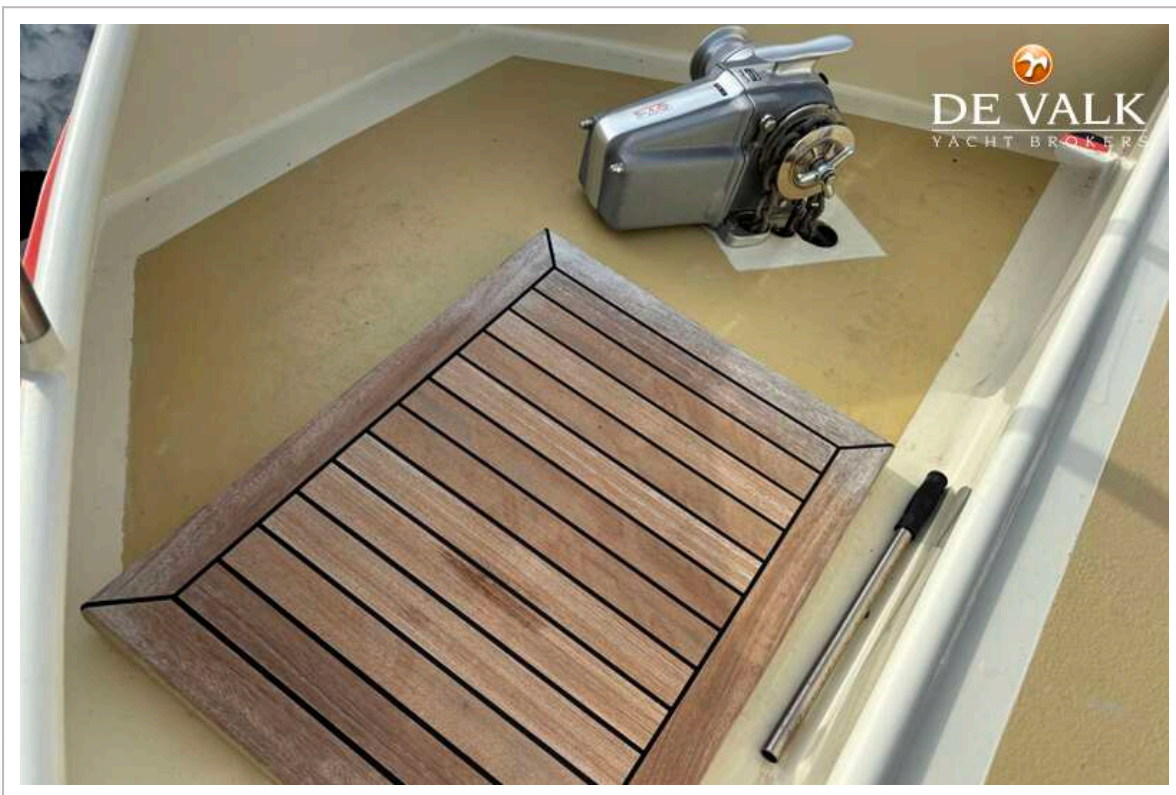
# BARKAS 1200 OK



# BARKAS 1200 OK



# BARKAS 1200 OK



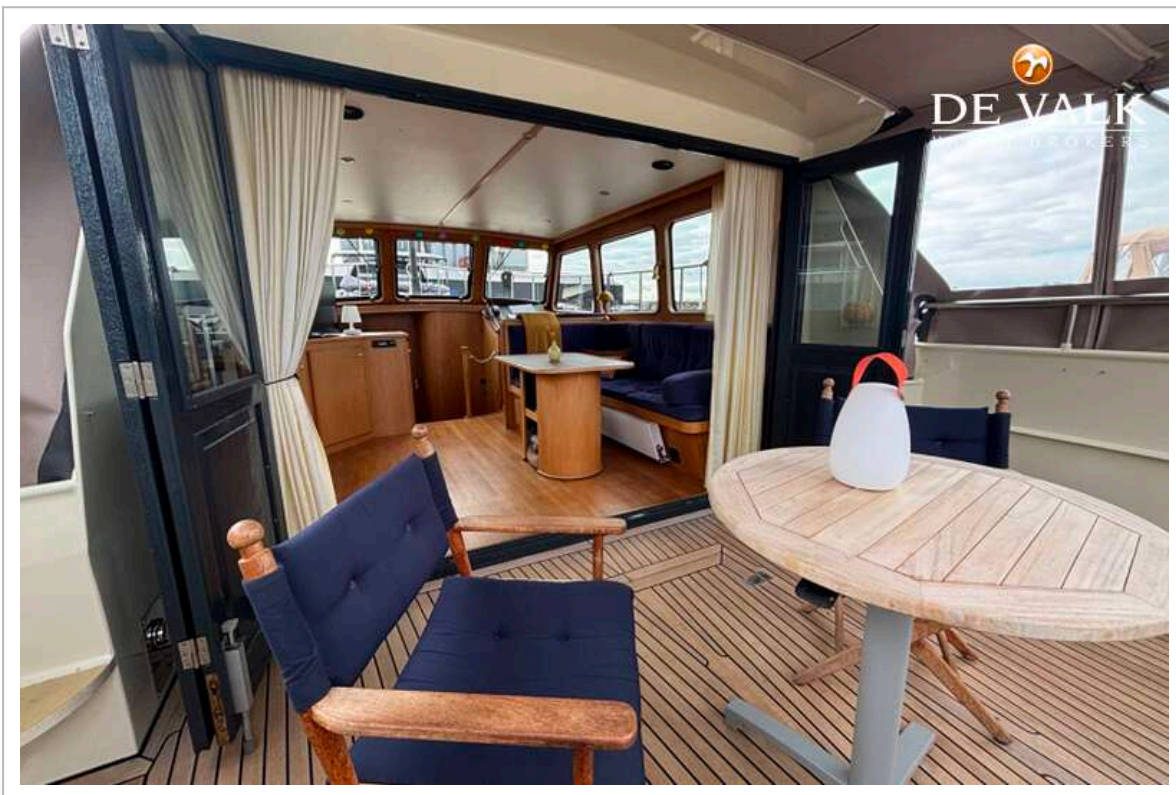
# BARKAS 1200 OK



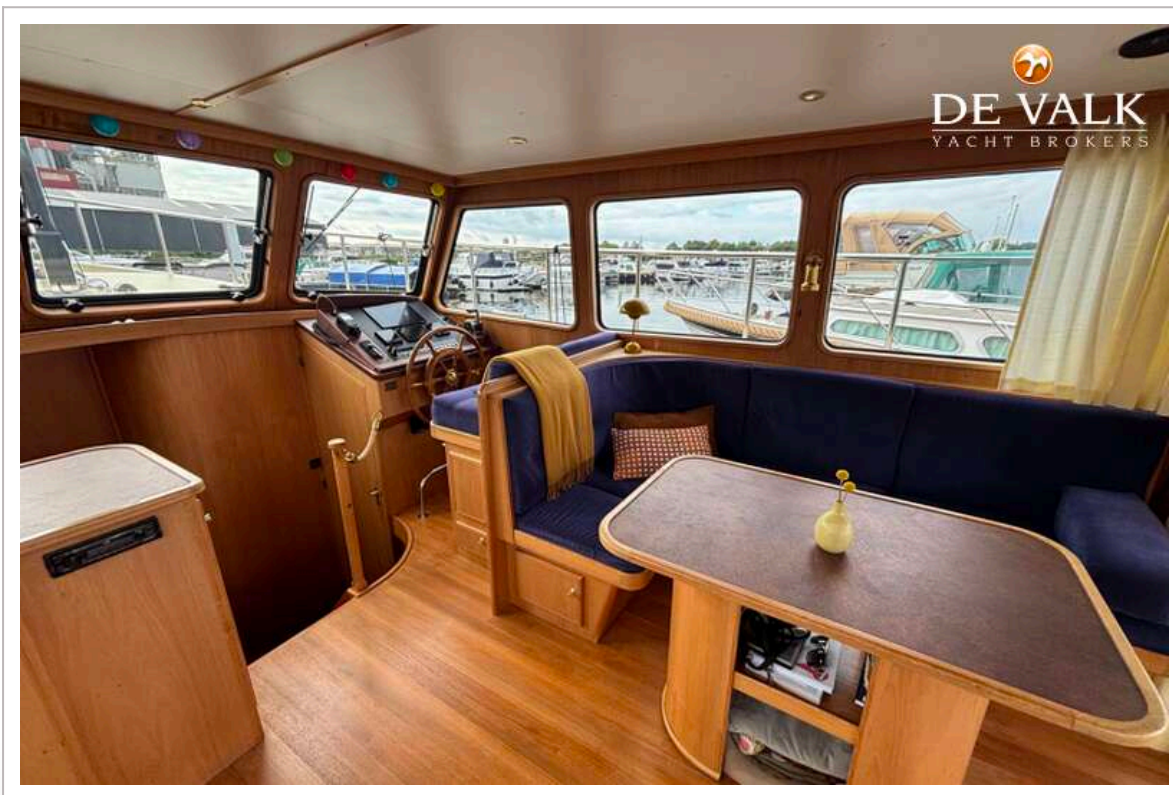
# BARKAS 1200 OK



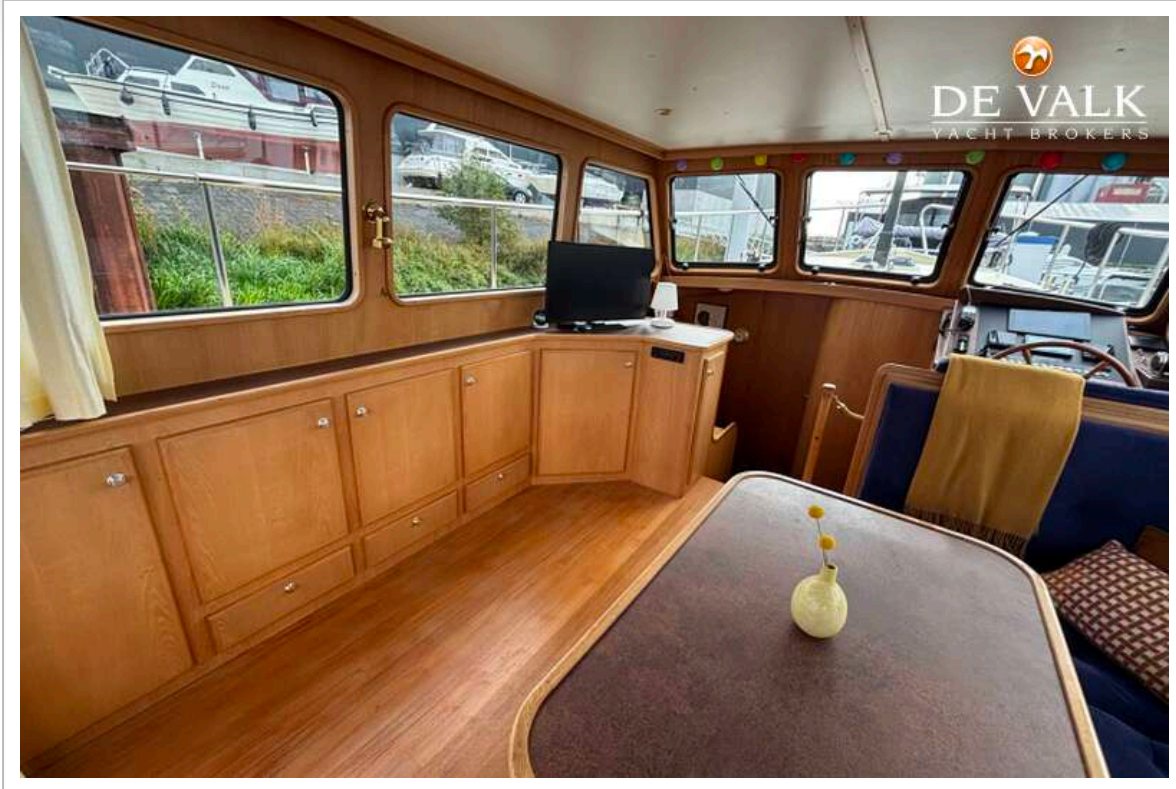
# BARKAS 1200 OK



# BARKAS 1200 OK



# BARKAS 1200 OK



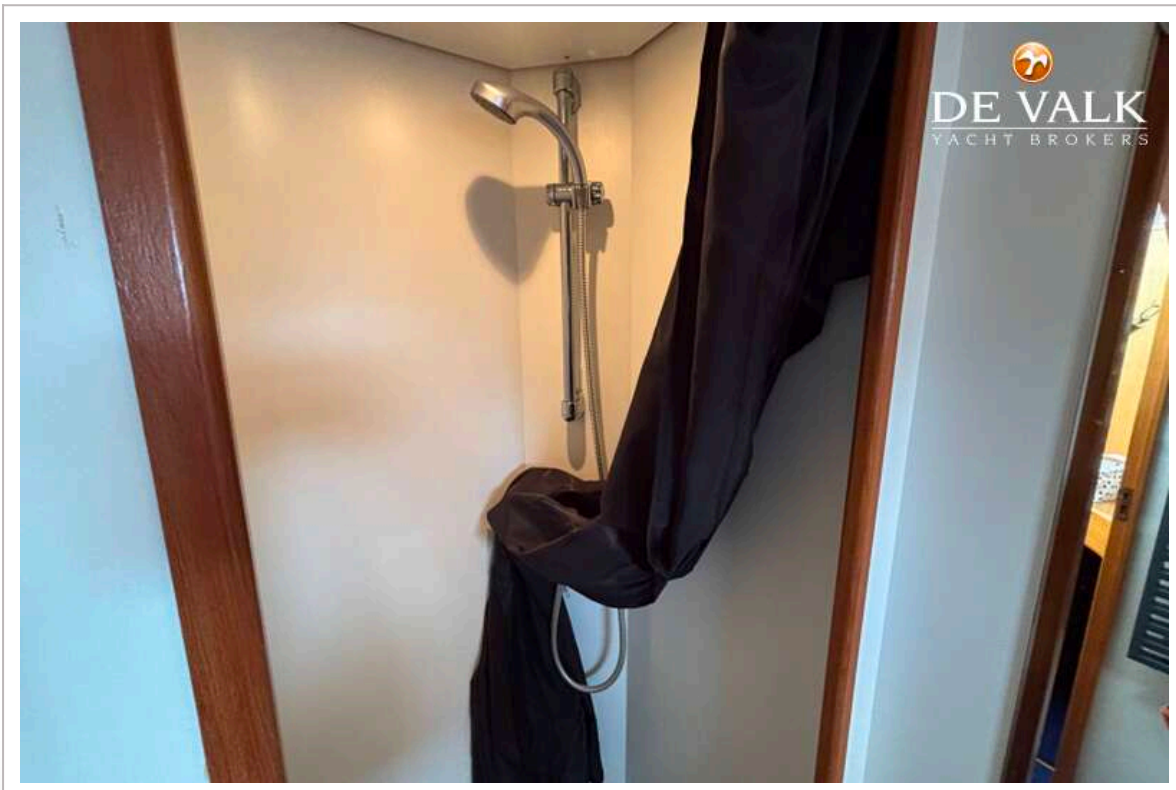
# BARKAS 1200 OK



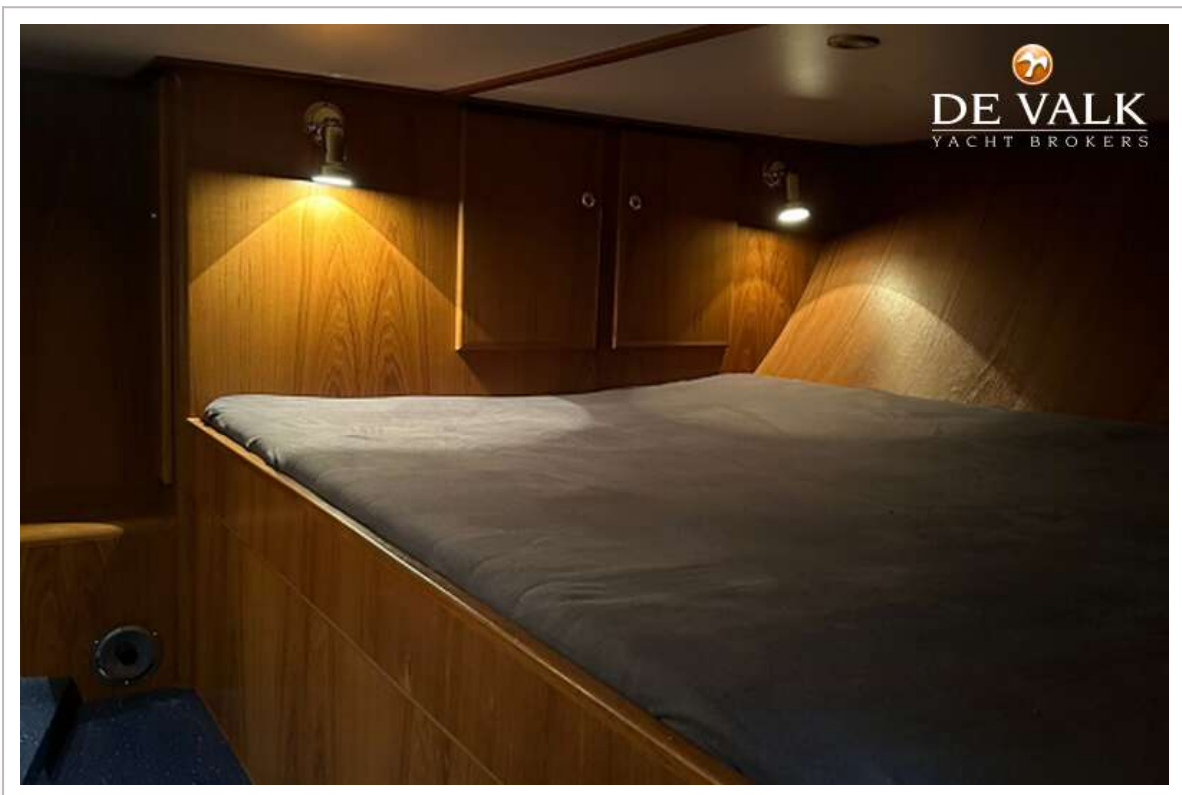
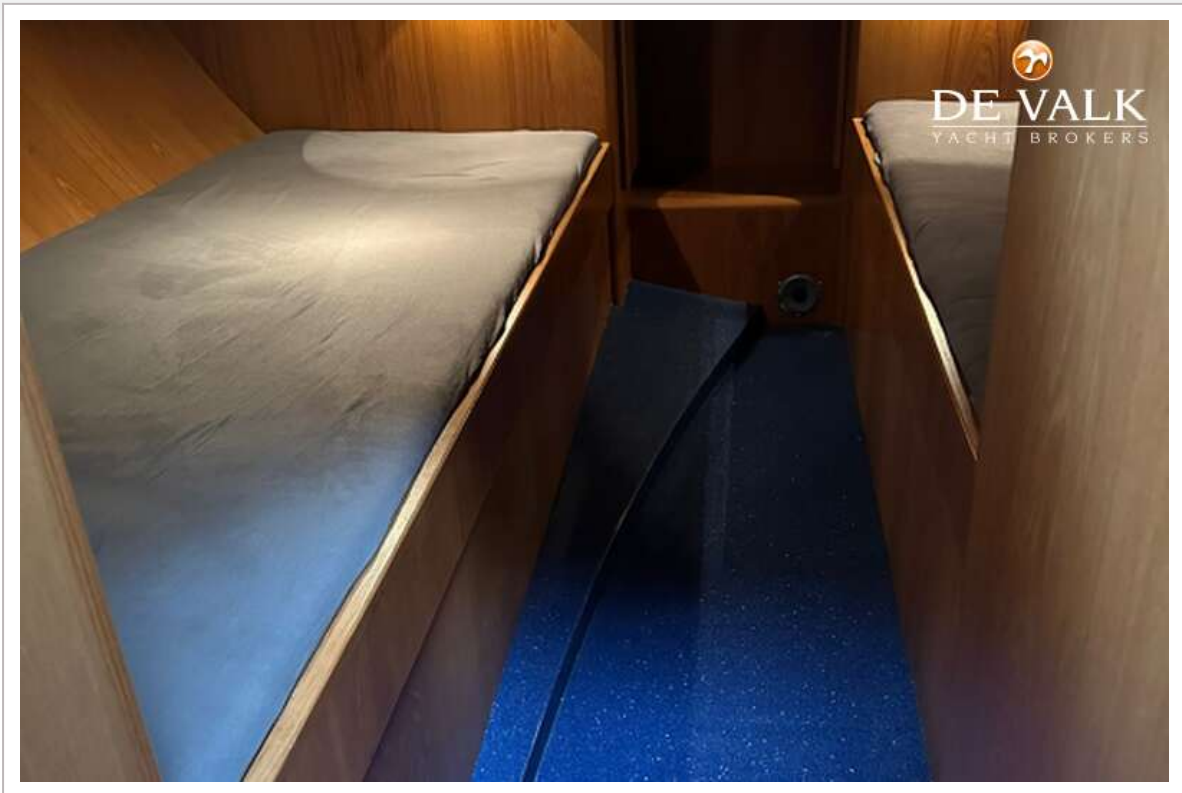
# BARKAS 1200 OK



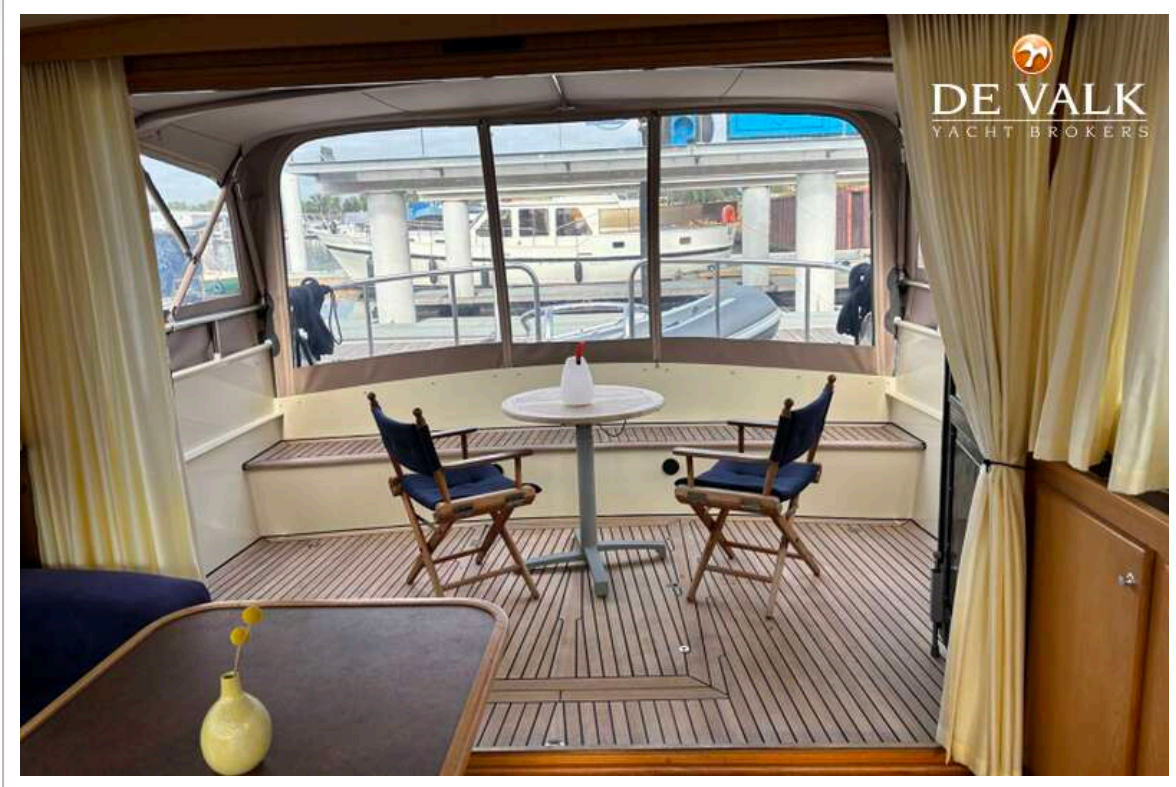
# BARKAS 1200 OK



# BARKAS 1200 OK



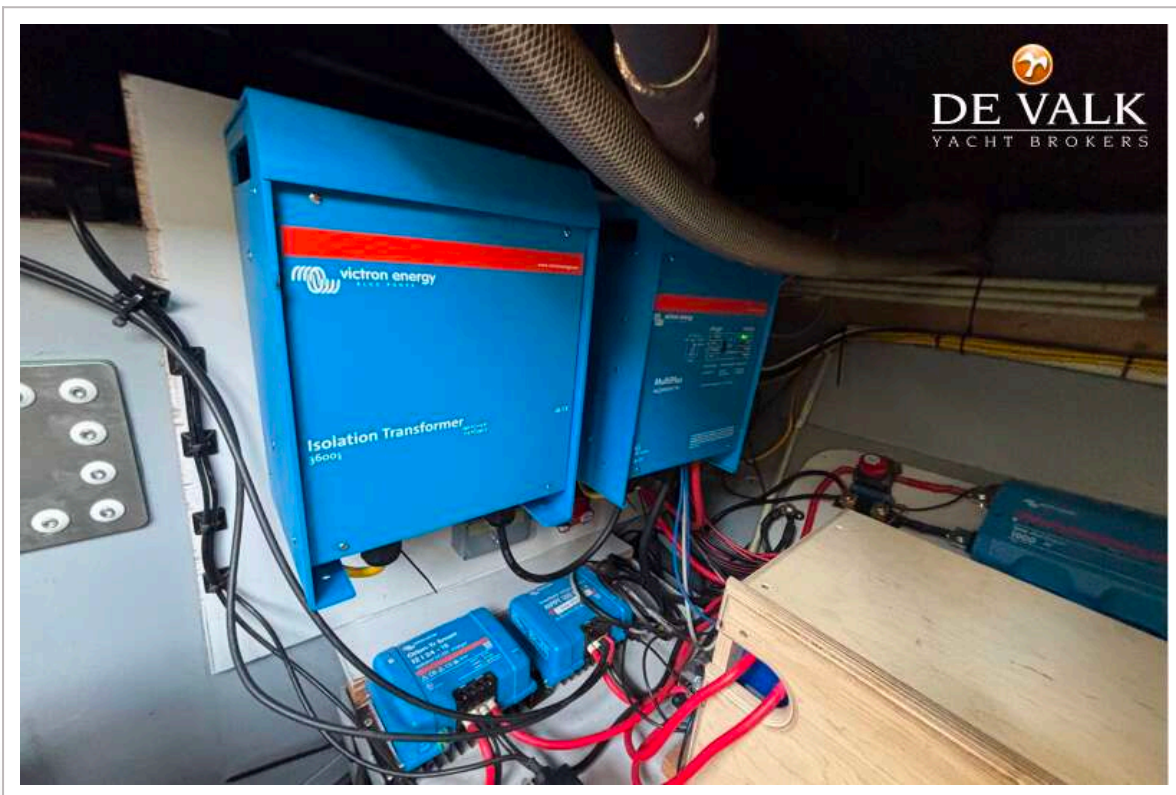
# BARKAS 1200 OK



# BARKAS 1200 OK



# BARKAS 1200 OK



# BARKAS 1200 OK

