



DE VALK  
YACHT BROKERS



## FAIRWAYS MARINE FISHER 30 PILOTHOUSE



DE VALK  
YACHT BROKERS

# FAIRWAYS MARINE FISHER 30 PILOTHOUSE

## BROKER'S COMMENTS

The Fairways Fisher 30 is a solid and stylish motorboat, perfect for relaxing weekend getaways or day trips. With its comfortable interior, practical layout, and reliable engine, it offers the ideal combination of comfort and functionality. This boat is ready for new adventures and is an excellent choice for anyone seeking versatile and enjoyable boating experiences.

*Mark Hesselmans*

## SPECIFICATIONS

<b>Dimensions</b>	9.14 x 2.90 x 1.30 (m)	<b>Builder</b>	
<b>Built</b>	1975	<b>Cabins</b>	1
<b>Material</b>	GRP	<b>Berths</b>	2
<b>Engine(s)</b>	1 x Volvo Penta MD2040B diesel	<b>Hp/Kw</b>	38.00 (hp), 27.97 (kw)
<b>Asking price</b>	€ 79.000 (VAT Paid)	<b>Lying</b>	at sales office

## CONTACT

<b>Sales office</b>	De Valk Loosdrecht B.V.	<b>Telephone</b>	+31 (0)35 582 90 30
<b>Address</b>	't Breukeleveense Meentje 6 1231LM Loosdrecht / Wijdmeren NL	<b>E-mail</b>	loosdrecht@devalk.nl

## DISCLAIMER

These particulars are given in good faith as supplied but cannot be guaranteed.



# FAIRWAYS MARINE FISHER 30 PILOTHOUSE

## GENERAL

<b>Model</b>	FAIRWAYS MARINE FISHER 30 PILOTHOUSE
<b>Type</b>	motor yacht
<b>LOA (m)</b>	9,14
<b>Beam (m)</b>	2,90
<b>Draft (m)</b>	1,30
<b>Year built</b>	1975
<b>Displacement (t)</b>	3
<b>Hull material</b>	GRP
<b>Hull colour</b>	green
<b>Hull shape</b>	full bilged
<b>Superstructure material</b>	GRP
<b>Rubbing strake</b>	wood
<b>Deck material</b>	GRP
<b>Deck finish</b>	non-skid paint
<b>Superstructure deck finish</b>	paint
<b>Cockpit deck finish</b>	teak
<b>Window frame</b>	aluminium
<b>Window material</b>	tempered glass
<b>Deckhatch</b>	yes
<b>Portholes</b>	aluminium 4 each side
<b>Mast can be lowered</b>	manual
<b>Fuel tank (litre)</b>	yes
<b>Level indicator (fuel tank)</b>	CN
<b>Freshwater tank (litre)</b>	yes
<b>Wheel steering</b>	yes
<b>Outside helm position</b>	yes

## ACCOMMODATION

<b>Cabins</b>	1
<b>Berths</b>	2



# FAIRWAYS MARINE FISHER 30 PILOTHOUSE

Fridge	Isotherm
Wardrobe	hanging/drawers/shelves
Toilet	separate

## MACHINERY

No of engines	1
Make	Volvo Penta
Type	MD2040B
HP	38
kW	27.97
Fuel	diesel
Engine hours	20
Engine controls	electrical
Gearbox	hydraulic

## NAVIGATION

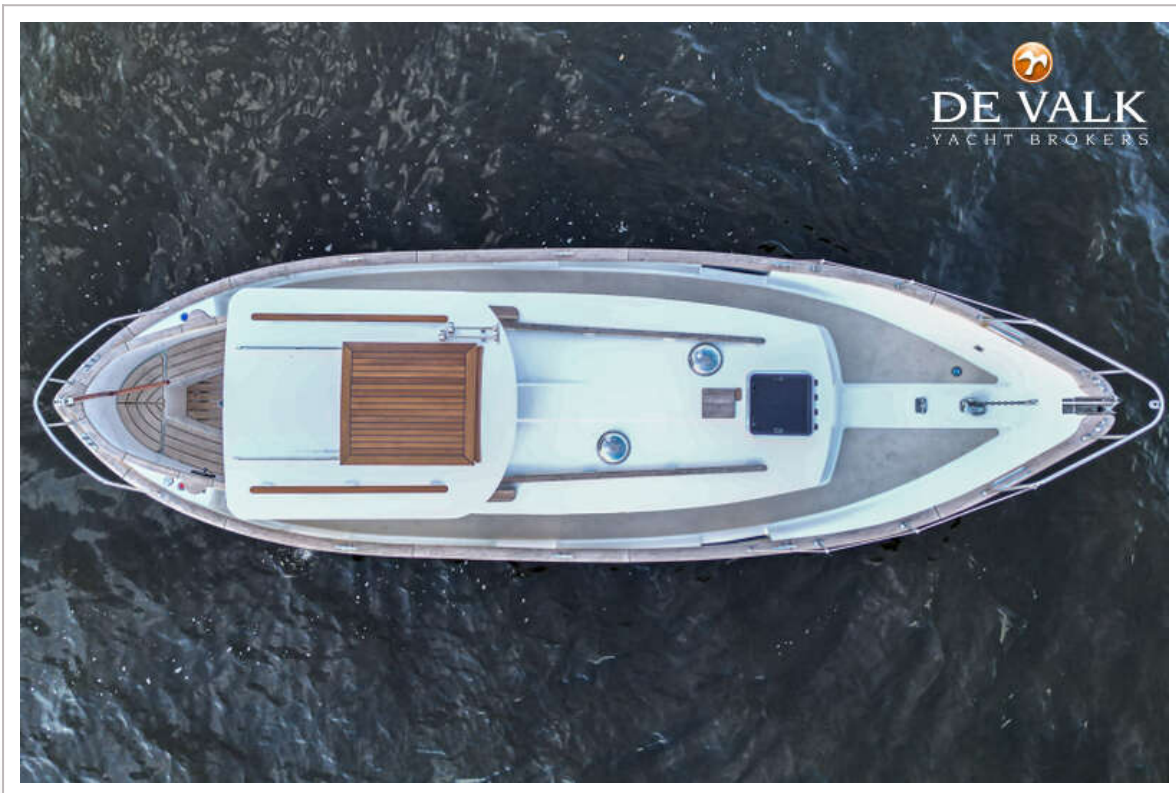
Navigation lights	yes
-------------------	-----



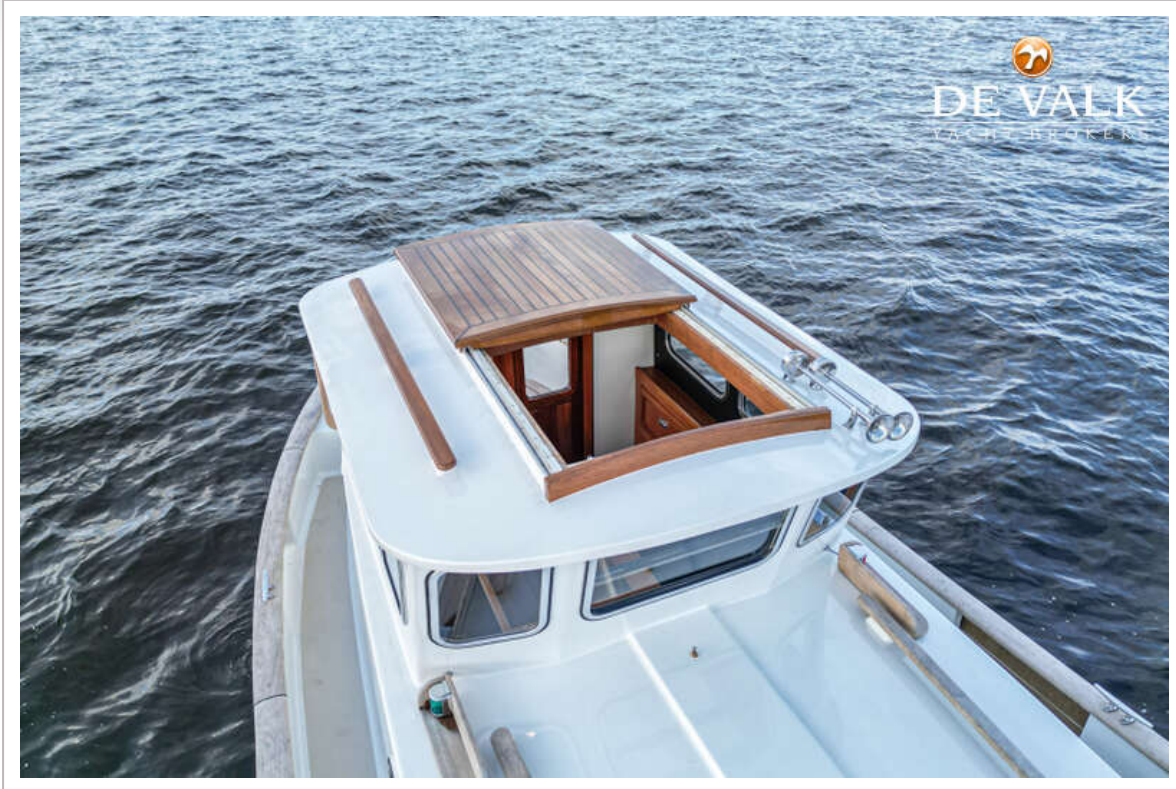
# FAIRWAYS MARINE FISHER 30 PILOTHOUSE



# FAIRWAYS MARINE FISHER 30 PILOTHOUSE



# FAIRWAYS MARINE FISHER 30 PILOTHOUSE



# FAIRWAYS MARINE FISHER 30 PILOTHOUSE



# FAIRWAYS MARINE FISHER 30 PILOTHOUSE



# FAIRWAYS MARINE FISHER 30 PILOTHOUSE



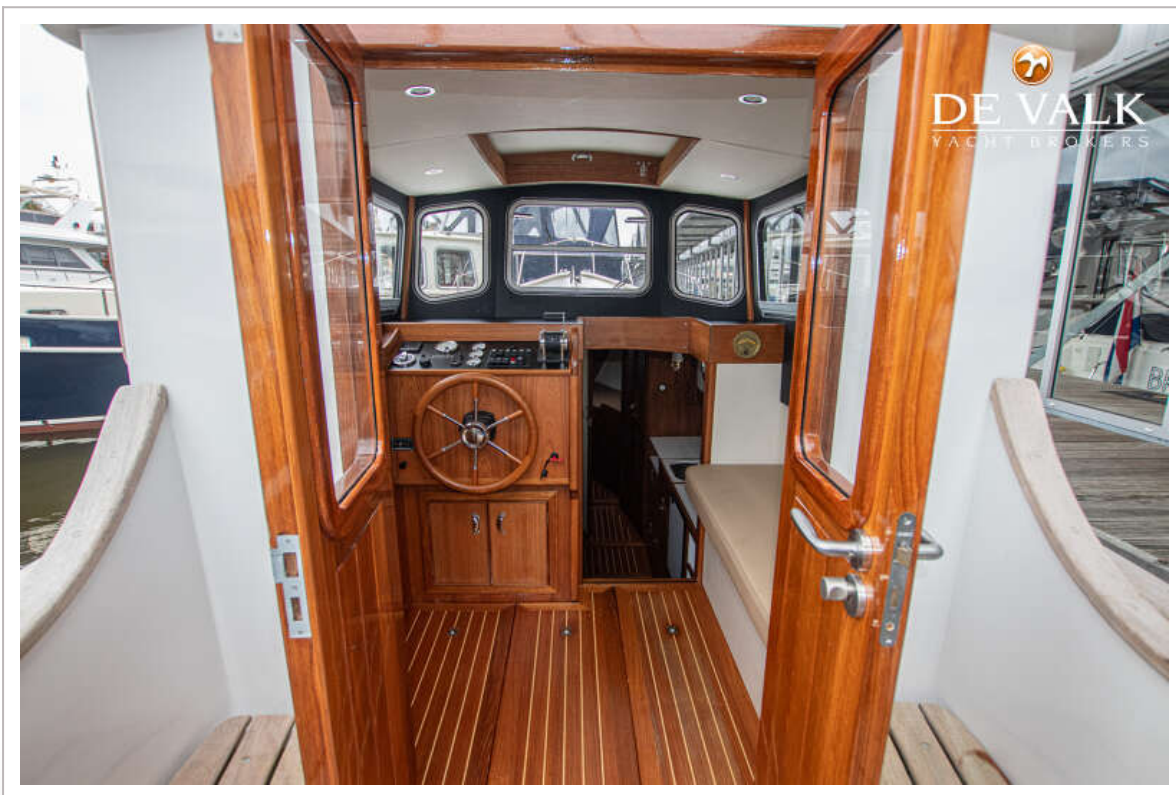
# FAIRWAYS MARINE FISHER 30 PILOTHOUSE



# FAIRWAYS MARINE FISHER 30 PILOTHOUSE



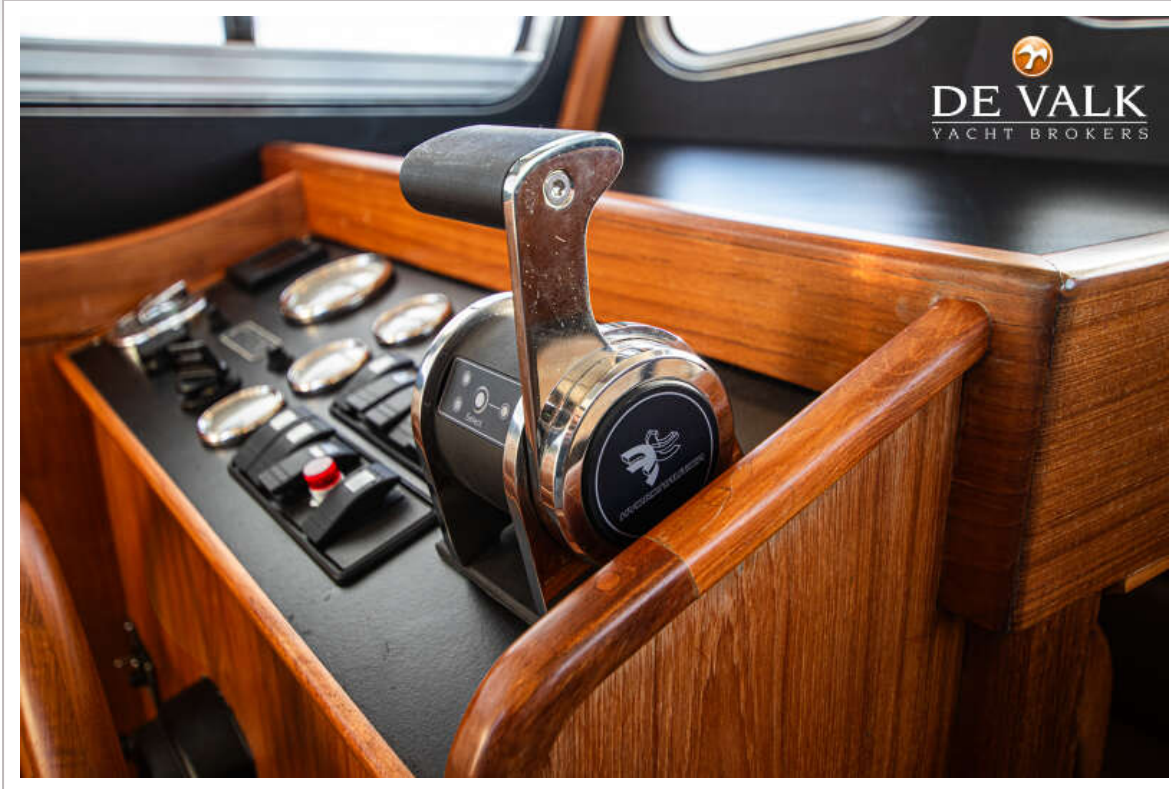
# FAIRWAYS MARINE FISHER 30 PILOTHOUSE



# FAIRWAYS MARINE FISHER 30 PILOTHOUSE



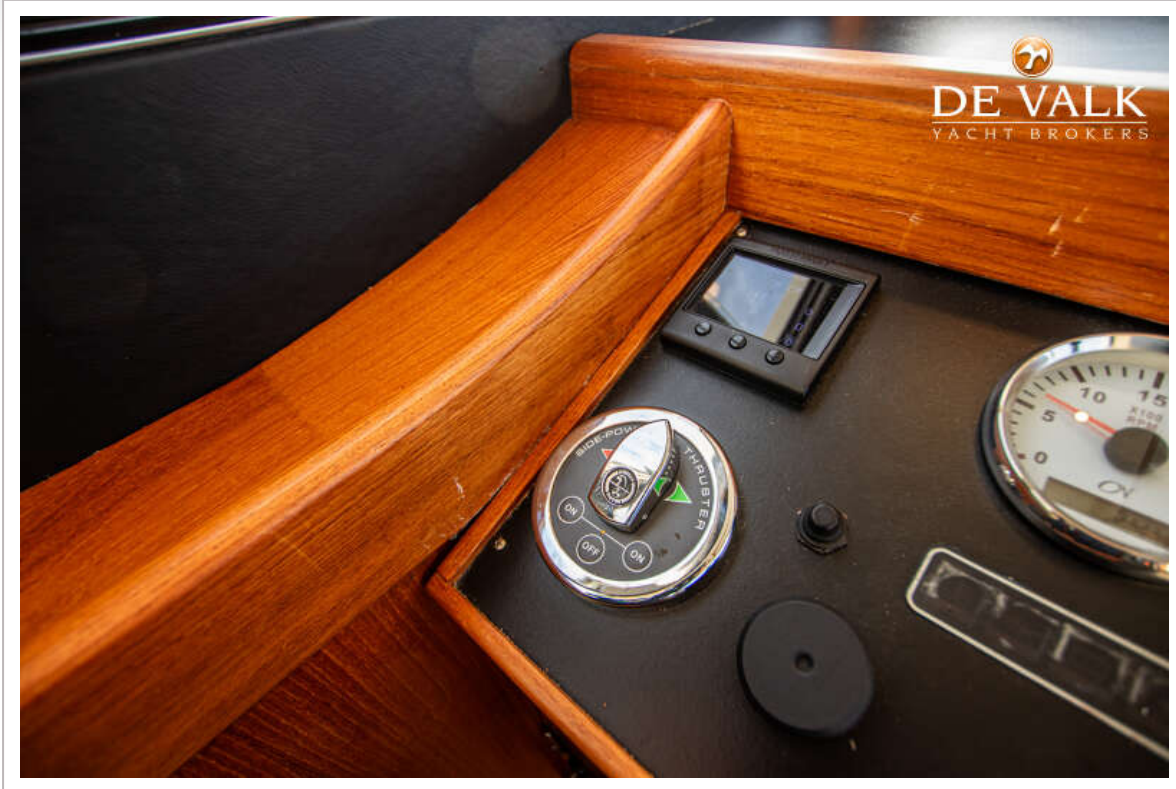
# FAIRWAYS MARINE FISHER 30 PILOTHOUSE



# FAIRWAYS MARINE FISHER 30 PILOTHOUSE



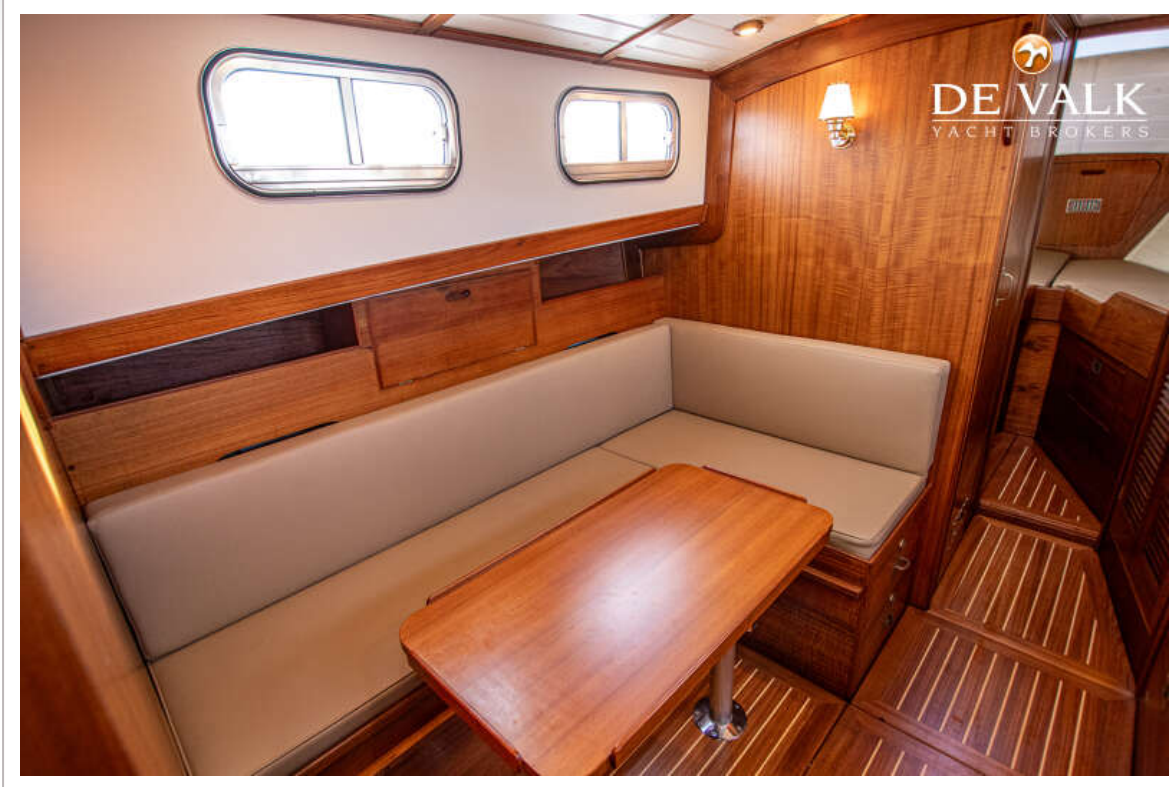
# FAIRWAYS MARINE FISHER 30 PILOTHOUSE



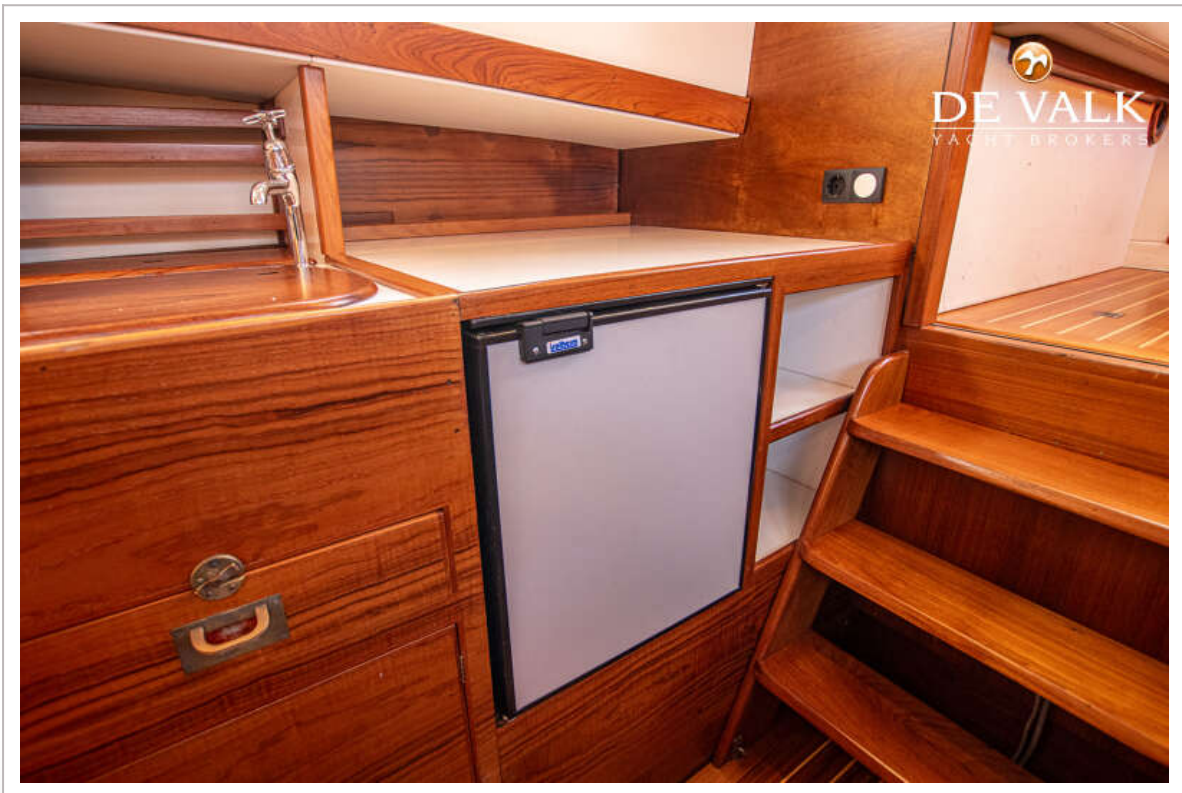
# FAIRWAYS MARINE FISHER 30 PILOTHOUSE



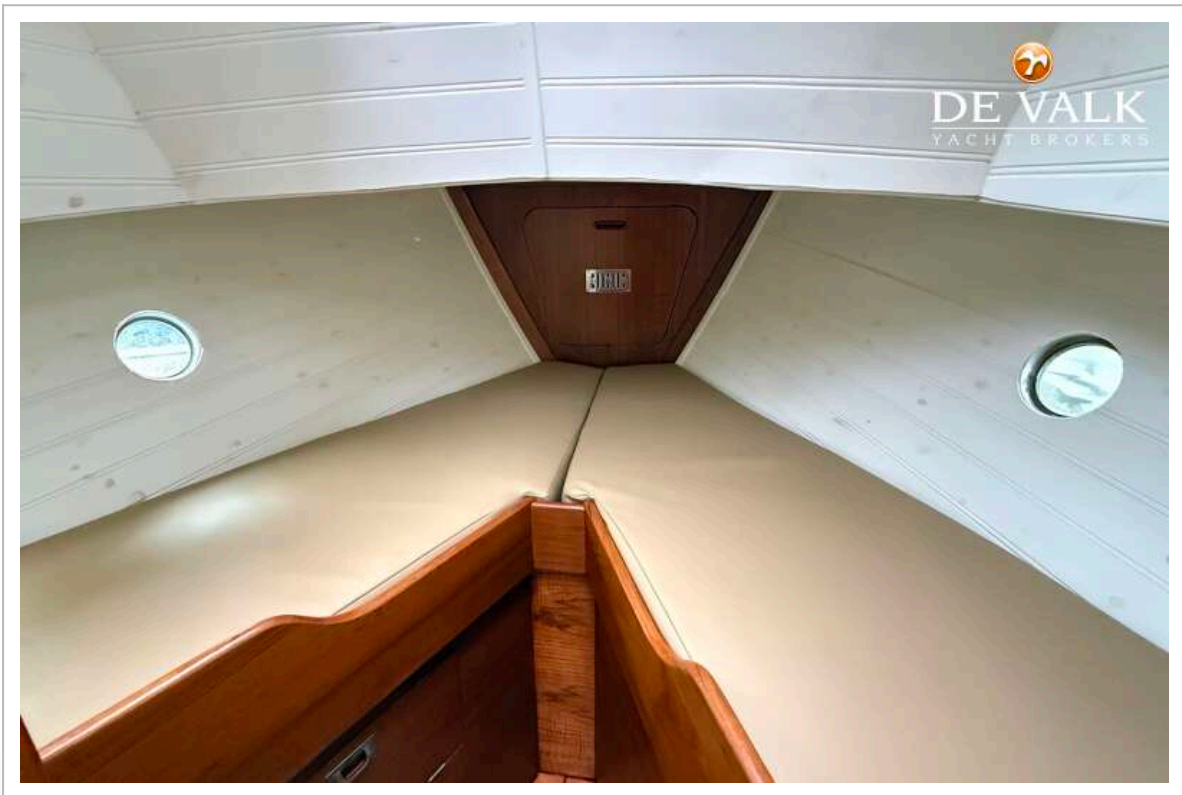
# FAIRWAYS MARINE FISHER 30 PILOTHOUSE



# FAIRWAYS MARINE FISHER 30 PILOTHOUSE



# FAIRWAYS MARINE FISHER 30 PILOTHOUSE



# FAIRWAYS MARINE FISHER 30 PILOTHOUSE

