



DE VALK

YACHT BROKERS



## CRUISING HOME TRAVELLER 1500



DE VALK  
YACHT BROKERS

## BROKER'S COMMENTS

The CH Traveller 1500 "Cleopatra" combines solid construction with luxurious comfort. This 2023 steel houseboat is in as-new condition, featuring high-quality insulation, floor heating, a fireplace, and spacious living areas. With its generous deck, elegant finish, and advanced technical installation (including a Nanni 135 hp engine, Kabola heater, and Victron system), it offers the perfect blend of comfort, elegance, and all-season liveability.

**Mark Hesselmans**

## SPECIFICATIONS

<b>Dimensions</b>	16.50 x 5.50 x 4,15 / 1.00 (m)	<b>Builder</b>	SRF Jachtbouw
<b>Built</b>	2023	<b>Cabins</b>	1
<b>Material</b>	Steel	<b>Berths</b>	4
<b>Engine(s)</b>	1 x Nanni N4.140 diesel	<b>Hp/Kw</b>	135.00 (hp), 99.36 (kw)
<b>Asking price</b>	€ 795.000 (VAT Paid)	<b>Lying</b>	at sales office

## CONTACT

<b>Sales office</b>	De Valk Loosdrecht B.V.	<b>Telephone</b>	+31 (0)35 582 90 30
<b>Address</b>	't Breukeleveense Meentje 6 1231LM Loosdrecht / Wijdmeren NL	<b>E-mail</b>	loosdrecht@devalk.nl

## DISCLAIMER

These particulars are given in good faith as supplied but cannot be guaranteed.



## GENERAL

Model	CRUISING HOME TRAVELLER 1500
Type	motor yacht
LOA (m)	16,50
LWL (m)	14,95
Beam (m)	5,50
Draft (m)	1,00
Draft min (m)	4,15
Air draft (m)	4,50
Year built	2023
Builder	SRF Jachtbouw
Country	The Netherlands
Designer	Olivier F. van Meer Design BV Enkhuizen
Displacement (t)	39
CE norm	D
Hull material	steel
Hull colour	black
Hull shape	multi hard chine
Superstructure material	steel
Rubbing strake	stainless steel
Deck material	steel
Deck finish	synthetic teak
Superstructure deck finish	synthetic teak
Cockpit deck finish	synthetic teak
Window frame	aluminium
Window material	double glazing
Insulation	foam
Flybridge	yes
Mast can be lowered	manual
Fuel tank (litre)	steel 865 L
Level indicator (fuel tank)	CN



<b>Freshwater tank (litre)</b>	steel 2500 L
<b>Level indicator (freshwater)</b>	CN
<b>Blackwater tank (litre)</b>	polyethylene 500 L
<b>Blackwater tank extraction</b>	deck extraction + pump
<b>Wheel steering</b>	hydraulic
<b>Outside helm position</b>	yes

## ACCOMMODATION

<b>Cabins</b>	1
<b>Berths</b>	4
<b>Interior</b>	oak
<b>Floor</b>	wood
<b>Aft deck</b>	yes
<b>Headroom saloon (m)</b>	2,30
<b>Heating</b>	floor heating Kabola KB40
<b>Dinette</b>	yes
<b>Opening door to cockpit</b>	yes
<b>Sliding door to aft deck</b>	yes
<b>Galley</b>	yes
<b>Countertop</b>	granite
<b>Sink</b>	corian
<b>Cooker</b>	induction AEG two pits
<b>Microwave/oven combi</b>	AEG KMK968090B
<b>Fridge</b>	AEG
<b>Freezer</b>	AEG
<b>Hot water system</b>	220V + engine
<b>Water pressure system</b>	electrical
<b>Dishwasher</b>	AEG GHE613CB6
<b>Owners cabin</b>	double bed
<b>Bed length (m)</b>	2,00
<b>Wardrobe</b>	hanging/drawers/shelves



Toilet	shared
Toilet system	electric
Wash basin	in the bathroom
Shower	en suite

## MACHINERY

No of engines	1
Make	Nanni
Type	N4.140
HP	135
kW	99.36
Fuel	diesel
Maximum speed (kn)	9
Cruising speed (kn)	6
Engine cooling system	freshwater heat exchanger
Drive	shaft
Shaft seal	yes
Engine controls	electrical & bowden cable
Gearbox	hydraulic
Bowthruster	electric Quick 120 kgf, 24V
Exhaust	watercooled
Propeller type	fixed
Propeller shaft material	stainless steel
Shaft lubrication	grease
Electric bilge pump	yes
Electrical installation	24V/230V
Start battery	2x Yellow Optima 75Ah 12V
Service battery	4x VMF Semi Traction 230Ah/20h 12V
Bowthruster battery	2x Yellow Optima 75Ah 12V
Battery monitor	Victron
Battery charger/inverter	Victron Quattro 24V/5000W



Solar panel	6x 360Wp Victron
Shorepower	with cable
Insulation transformer	Victron 3600 W

## NAVIGATION

Electric compass	Raymarine
Depth sounder/log	Raymarine
Autopilot	Raymarine
Rudder angle indicator	Raymarine
Navigation lights	yes

## EQUIPMENT

Fixed windscreen	yes
Cockpit cover	yes
Sun awning	yes
Bathing platform	yes
Boarding ladder	stainless steel
Transom door	yes
Deck shower	yes
Anchor	yes
Anchor chain	yes
Windlass	electrical
Deck wash	yes
Sea railing	stainless steel
Grab rail (superstructure)	stainless steel
Railing side opening gates	yes
Clearview window	yes
Horn	electric





# CRUISING HOME TRAVELLER 1500



# CRUISING HOME TRAVELLER 1500







# CRUISING HOME TRAVELLER 1500





# CRUISING HOME TRAVELLER 1500





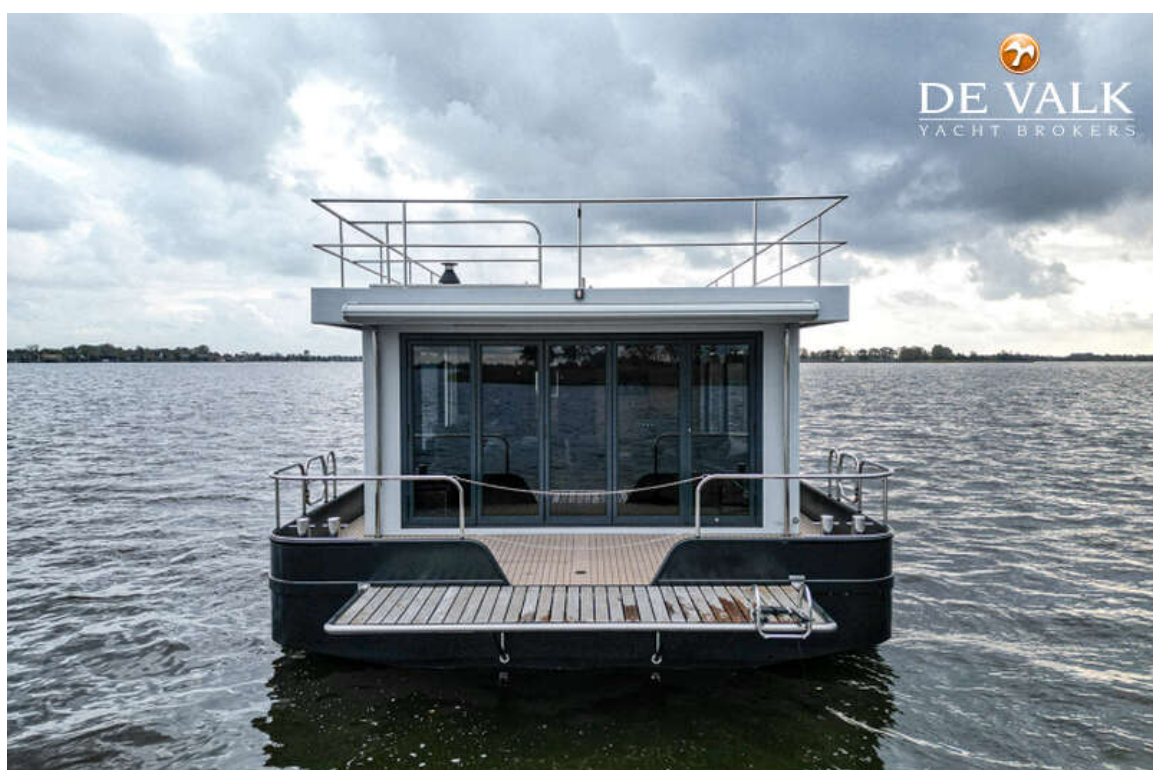


# CRUISING HOME TRAVELLER 1500

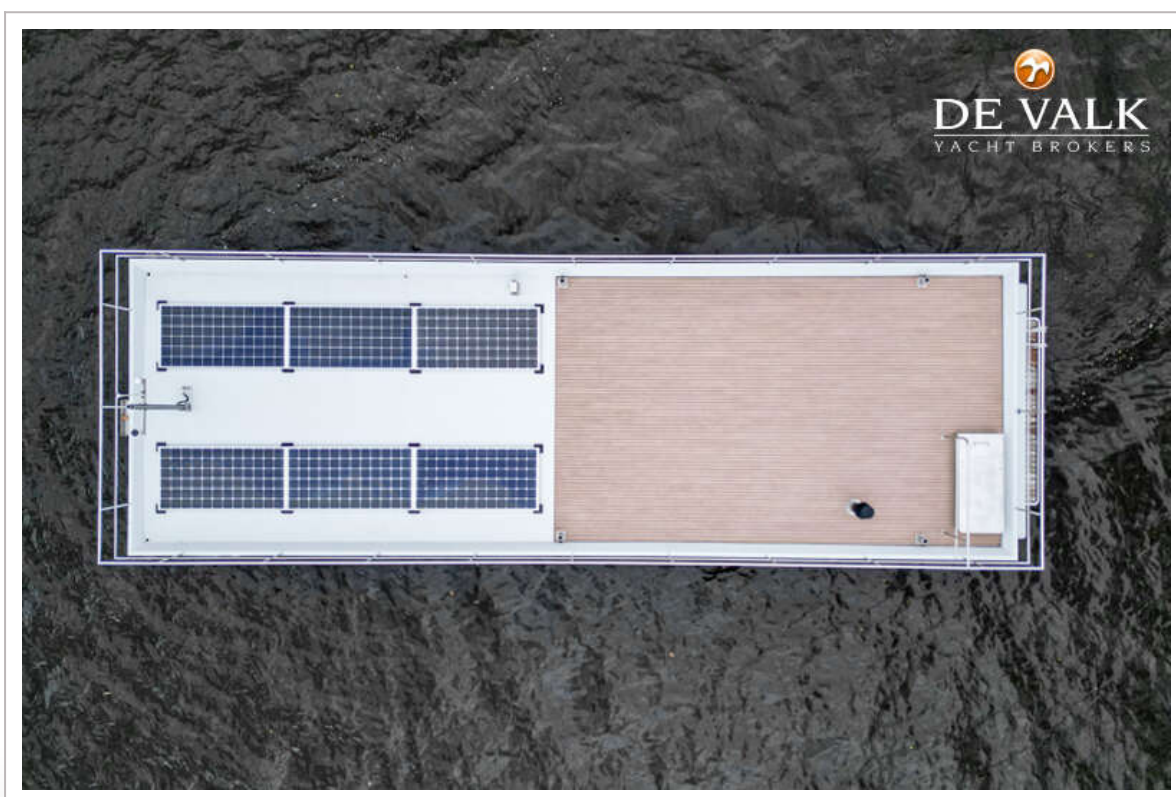
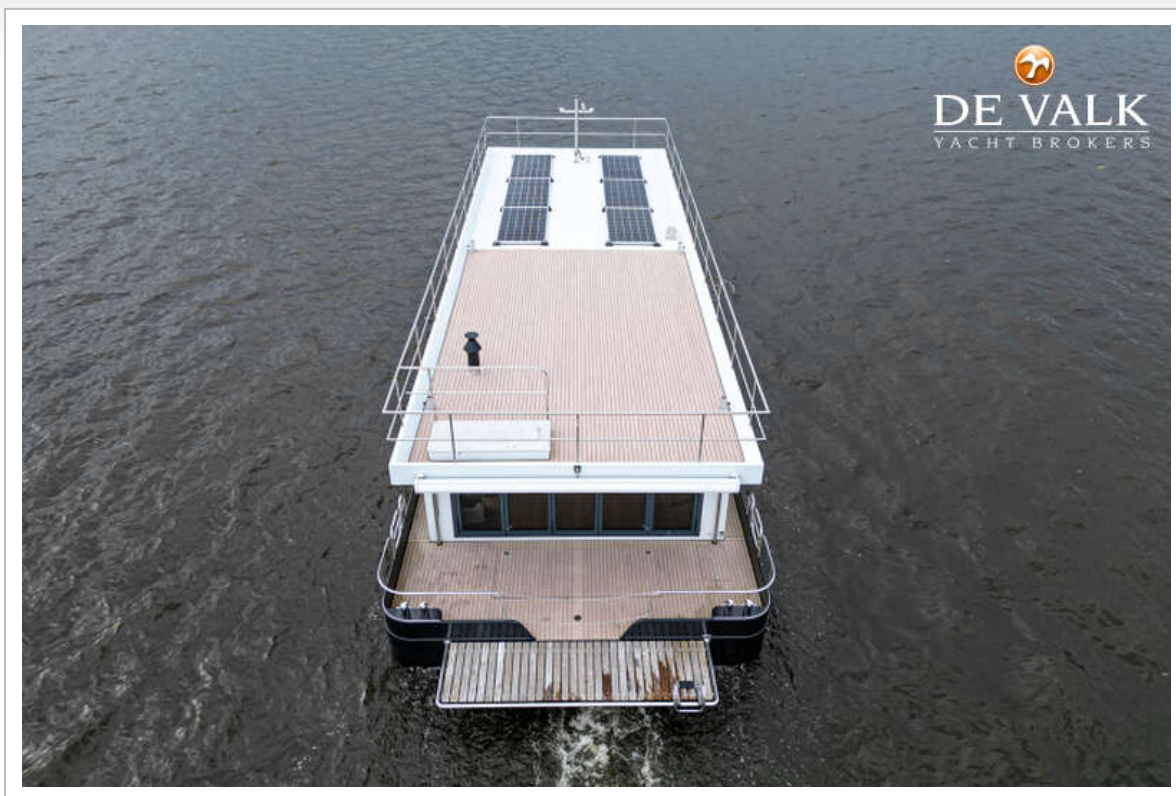




# CRUISING HOME TRAVELLER 1500

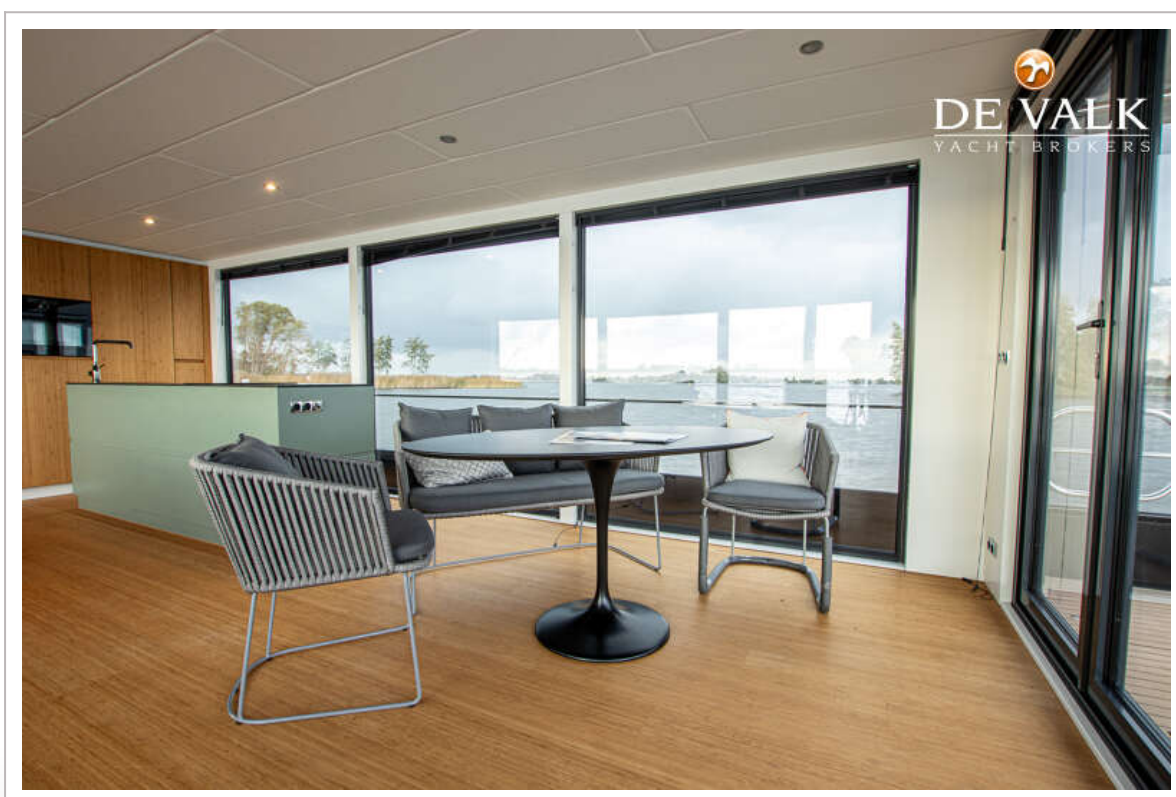


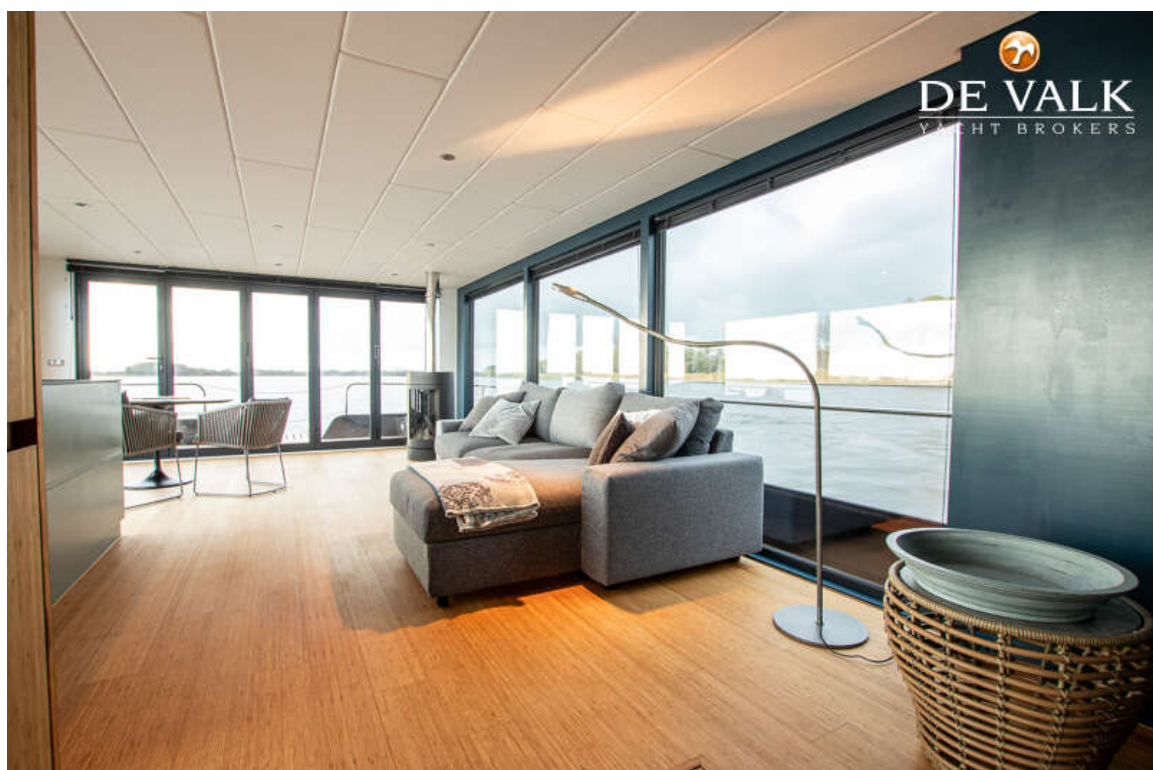
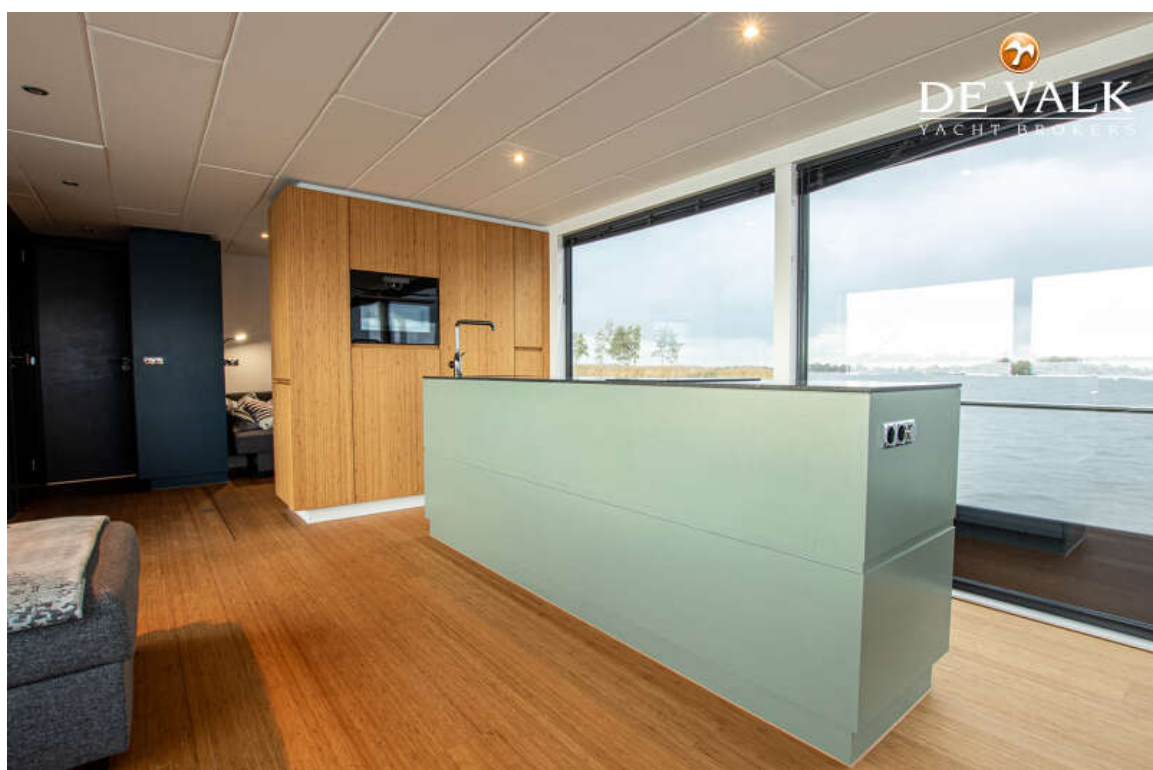
# CRUISING HOME TRAVELLER 1500





# CRUISING HOME TRAVELLER 1500







# CRUISING HOME TRAVELLER 1500

