



## PACIFIC CLIPPER 65



**DE VALK**  
YACHT BROKERS

# PACIFIC CLIPPER 65

## BROKER'S COMMENTS

Pacific Clipper 65 "Adrena-Line" her hull is built by De Groot Shipyard in Amsterdam - Holland. Her interior is built by Van Amerongen in Amsterdam and designed by R.J. Den Haak. 4 cabins, 10 berths, three bathrooms, central heating. With Adrena-Line you can explore the world, live on board, start your own charter company etc. CVO certified, viewing by appointment in The Netherlands.

*Reinier van der Wolf*

## SPECIFICATIONS

<b>Dimensions</b>	20.00 x 4.88 x 2.50 (m)	<b>Builder</b>	De Groot Shipyard in Amsterdam - Holland
<b>Built</b>	1984	<b>Cabins</b>	4
<b>Material</b>	Steel	<b>Berths</b>	10
<b>Engine(s)</b>	1 x DAF 615 diesel	<b>Hp/Kw</b>	120.00 (hp), 88.32 (kw)
<b>Asking price</b>	€ 279.000 (VAT Exempt)	<b>Lying</b>	contact Monnickendam

## CONTACT

<b>Sales office</b>	De Valk Monnickendam B.V.	<b>Telephone</b>	+31 (0)299 65 63 50
<b>Address</b>	Hoogedijk 6 1145 PM Katwoude NL	<b>E-mail</b>	monnickendam@devalk.nl

## DISCLAIMER

These particulars are given in good faith as supplied but cannot be guaranteed.



# PACIFIC CLIPPER 65

## GENERAL

<b>Model</b>	PACIFIC CLIPPER 65
<b>Type</b>	sailing yacht
<b>LOA (m)</b>	20,00
<b>Beam (m)</b>	4,88
<b>Draft (m)</b>	2,50
<b>Year built</b>	1984
<b>Builder</b>	De Groot Shipyard in Amsterdam - Holland
<b>Country</b>	The Netherlands
<b>Designer</b>	R.J. den Haak
<b>Displacement (t)</b>	45
<b>Hull material</b>	steel
<b>Hull colour</b>	white
<b>Hull shape</b>	S-bilged
<b>Keel type</b>	long keel
<b>Superstructure material</b>	steel
<b>Rubbing strake</b>	steel
<b>Deck material</b>	steel
<b>Deck finish</b>	non-skid paint
<b>Superstructure deck finish</b>	paint
<b>Cockpit deck finish</b>	teak
<b>Antifouling (year)</b>	2024
<b>Window frame</b>	aluminium
<b>Window material</b>	tempered glass
<b>Deckhatch</b>	yes
<b>Portholes</b>	yes
<b>Insulation</b>	rockwool
<b>Fuel tank (litre)</b>	Approx. 1800 litre
<b>Fuel daytank (litre)</b>	Approx. 125 litre. daytank located above the engine.
<b>Freshwater tank (litre)</b>	Approx. 2000 litre
<b>Blackwater tank (litre)</b>	Approx 350 litre



# PACIFIC CLIPPER 65

Wheel steering	hydraulic
Inside helm position	Only steering
Outside helm position	hydraulic
Extra info	Water tight doors in the engine room, front and aft cabin.
Extra info	CVO certified,till 2031.
Extra info	yes

## ACCOMMODATION

Cabins	4
Berths	10
Interior	mahogany   Interior built by Van Amerongen
Layout	Front cabin with 4 single bunk beds, corridor with wardrobe, bathroom (toilet/washbowl/shower possible) round seat dinette, wood stove, saloon and galley, two cabins with double bed and bathroom in between (toilet and washbowl), corridor to the owner cabin with a bunk bed (now in use as storage/workshop) entrance to the engine room, owners cabin with French berth and private bathroom (shower/washbowl/toilet)
Floor	Wood and capet
Open cockpit	Center cockpit
Deck saloon	yes
Saloon	yes
Heating	central heating
Heating 2	stove wood   Salamander
Dinette	yes
Opening door to cockpit	yes
Galley	yes
Countertop	wood
Sink	stainless steel   Double stainless steel sink
Cooker	induction   Etna 4 burner
Oven	yes
Fridge	Liebherr
Freezer	Invention



# PACIFIC CLIPPER 65

Hot water system	on central heating
Water pressure system	electrical
Owners cabin	French bed
Wardrobe	yes
Bathroom	en suite
Toilet	yes
Toilet system	electric
Wash basin	yes
Shower	yes
Guest cabin 1	Four single bunk beds
Wardrobe	yes
Bathroom	separate
Toilet	yes
Toilet system	electric
Wash basin	yes
Shower	yes
Guest cabin 2	double bed
Wardrobe	yes
Bathroom	Between the two cabins
Toilet	yes
Toilet system	electric
Wash basin	yes
Guest cabin 3	double bed
Guest cabin 4	bunk bed   A possibility to built back the bunk beds in the aft corridor.
Washing machine	Zanussi Lindo 100

## MACHINERY

No of engines	1
Make	DAF
Type	615



# PACIFIC CLIPPER 65

<b>HP</b>	120
<b>kW</b>	88.32
<b>Fuel</b>	diesel
<b>Engine cooling system</b>	closed keelcooling
<b>Drive</b>	shaft
<b>Engine controls</b>	bowden cable   Morse engine controls
<b>Gearbox</b>	yes
<b>Exhaust</b>	dry
<b>Thrust bearing</b>	yes
<b>Propeller type</b>	fixed
<b>Propeller blades</b>	3 bladed
<b>Propeller shaft material</b>	stainless steel
<b>Shaft lubrication</b>	grease
<b>Electric bilge pump</b>	yes
<b>Generator</b>	Stamford 12.5 Kva generator with Lombardini diesel engine
<b>Start battery</b>	2x
<b>Service battery</b>	Sonnenschein EPzV, 880 ah battery package. ( 2V cells)
<b>Generator battery</b>	1x
<b>Battery charger</b>	Mastervolt 24/80-3
<b>Inverter</b>	Victron Phoenix 24/3000
<b>Solar panel</b>	2x solar panel installed on a stainless steel frame. (2023) 2x solar panel installed on a stainless steel frame. (2023)
<b>Shorepower</b>	with cable

## NAVIGATION

<b>Depth sounder/log</b>	Raymarine i70S (2018)
<b>Windset</b>	Raymarine i70S (2018)
<b>VHF</b>	Navman 7110, Sailor RT144
<b>Autopilot</b>	Raymarine Acu 300 autopilot (2018)
<b>Rudder angle indicator</b>	In the screen of the autopilot
<b>Radar</b>	Raymarine Quantum 2 Q24D (Doppler) (2018)



Radar/GPS/plotter	Raymarine (2018)
AIS transceiver	True Heading carbon Pro ais Class A tranceiver

## EQUIPMENT

Sprayhood	yes
Cockpit table	yes
Boarding ladder	yes
Anchor	Galvanized anchor 75 kg
Anchor chain	100 mtr. galvanized chain
Anchor 2	Galvanized anchor 75 kg
Anchor chain	50 mtr.
Windlass	electrical
Davits	steel
Davits controls	manual
Sea railing	wire
Pushpit	Stainless steel
Pulpit	Stainless steel
Fenders	yes
Mooring lines	yes
TV	Philips
Radio	Philips
DVD player	LG
Fire extinguisher	yes

## RIGGING

Rigging	sloop
Standing rigging	wire
Material mast	aluminium
Spreaders	2x
Mainsail	(2021)
Stoway mast	yes



# PACIFIC CLIPPER 65

<b>Genoa</b>	yes
<b>Genoa furler</b>	yes
<b>Cutter furler</b>	yes
<b>Staysail</b>	yes
<b>Staysail furler</b>	yes
<b>Yankee</b>	yes
<b>Reefing System</b>	main in-mast furling
<b>Extra info</b>	Winches: in cockpit: 2x Lewmar 65ST, 2x Lewmar 55ST, 1x Barlow 55ST electric, on mast: 2x Lewmar 48ST, 1x Lewmar 43ST, 2x Lewmar 40ST.



# PACIFIC CLIPPER 65



# PACIFIC CLIPPER 65



# PACIFIC CLIPPER 65



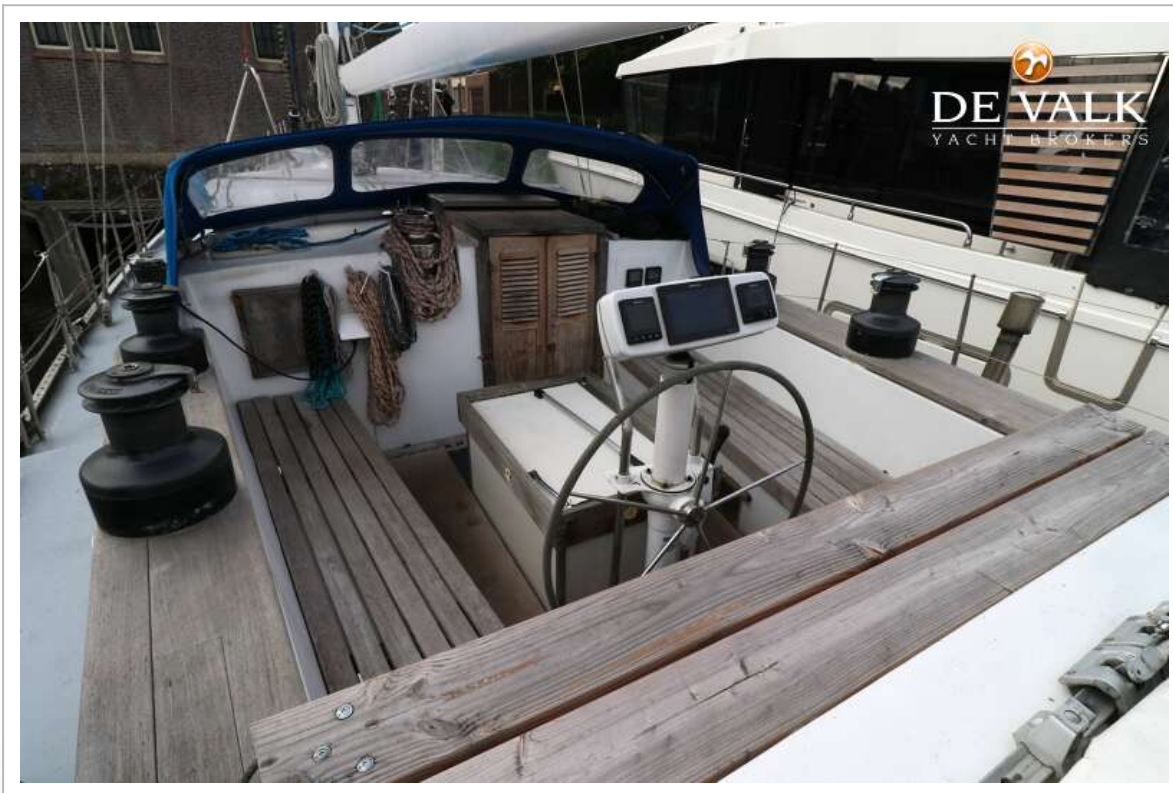
# PACIFIC CLIPPER 65



# PACIFIC CLIPPER 65



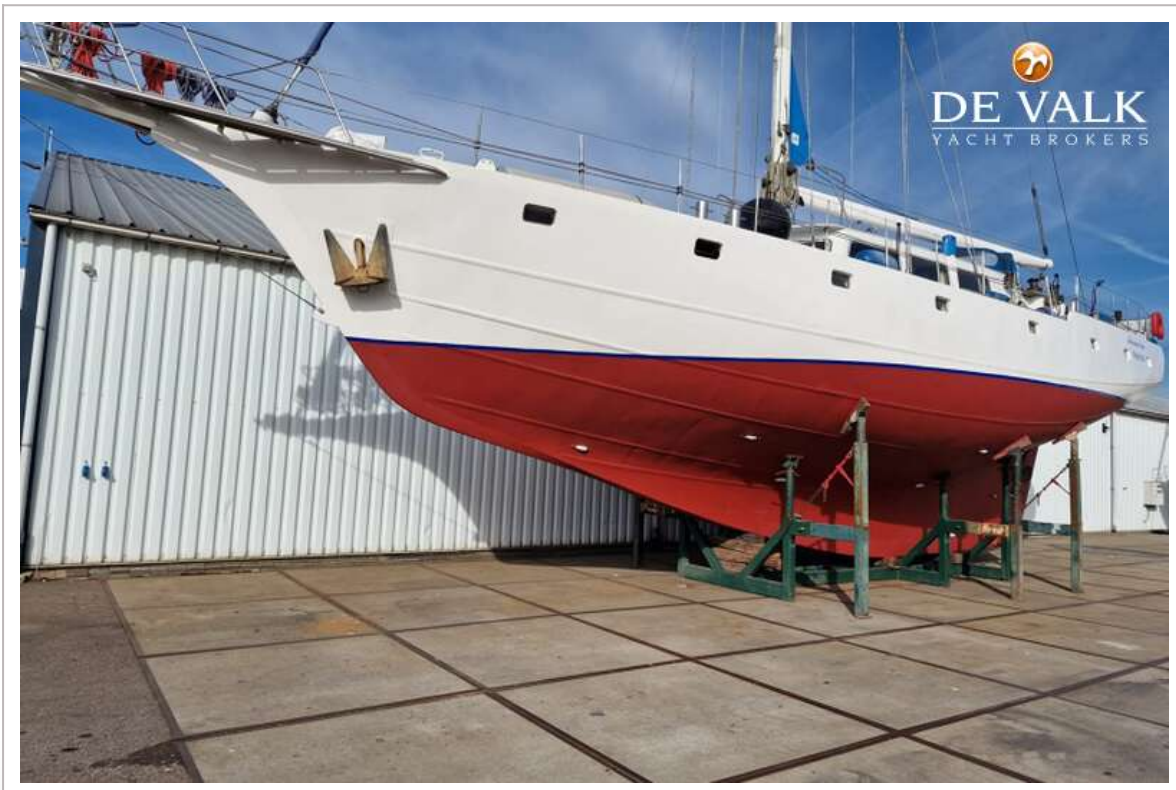
# PACIFIC CLIPPER 65



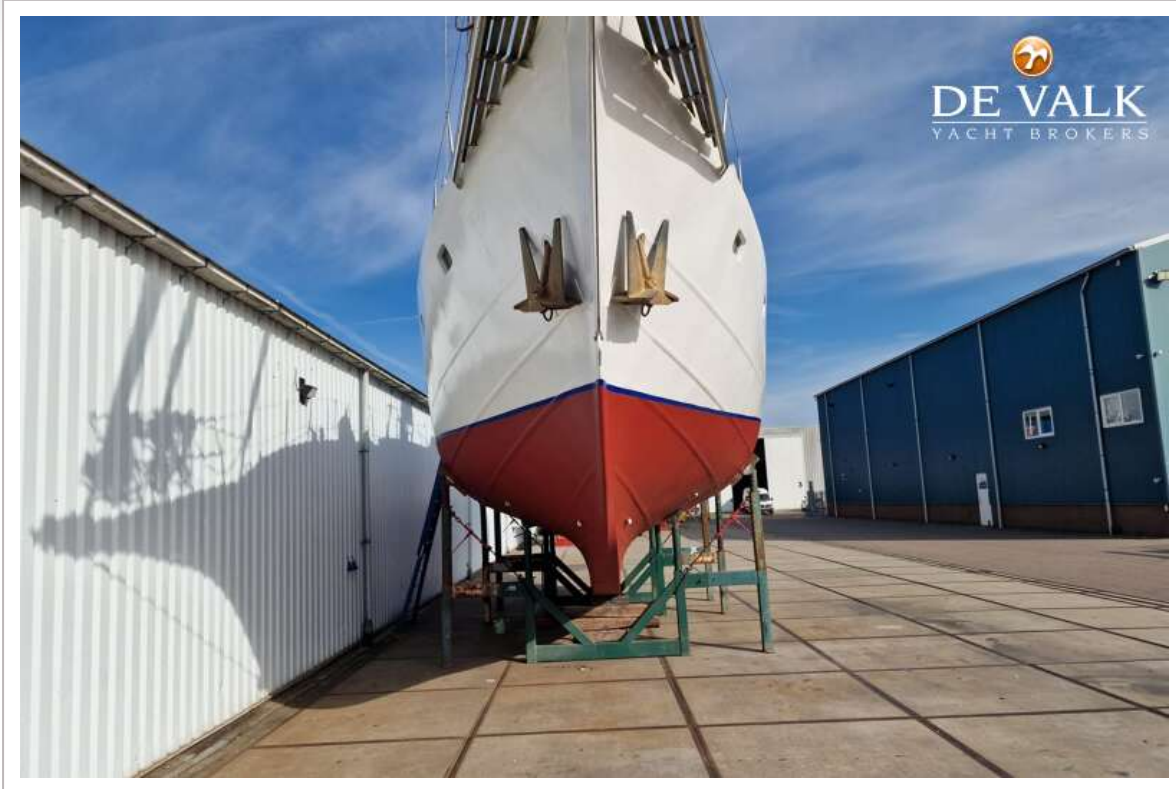
# PACIFIC CLIPPER 65



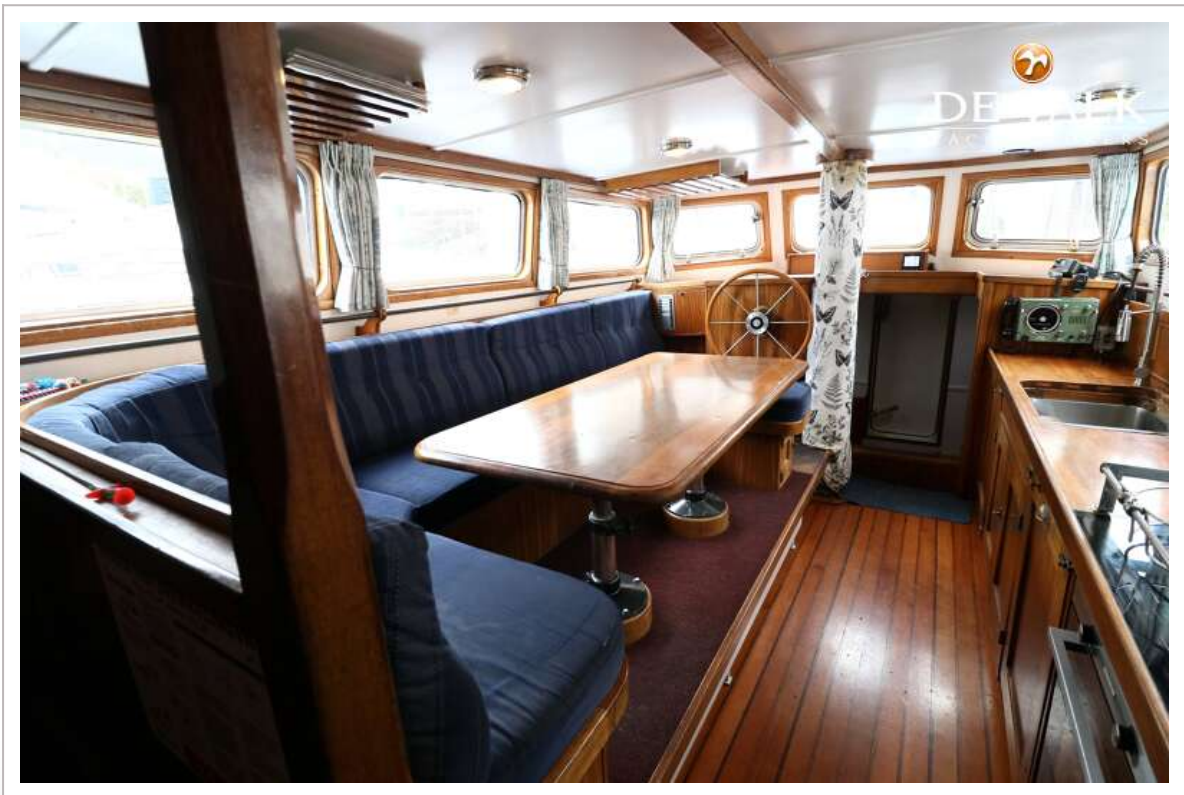
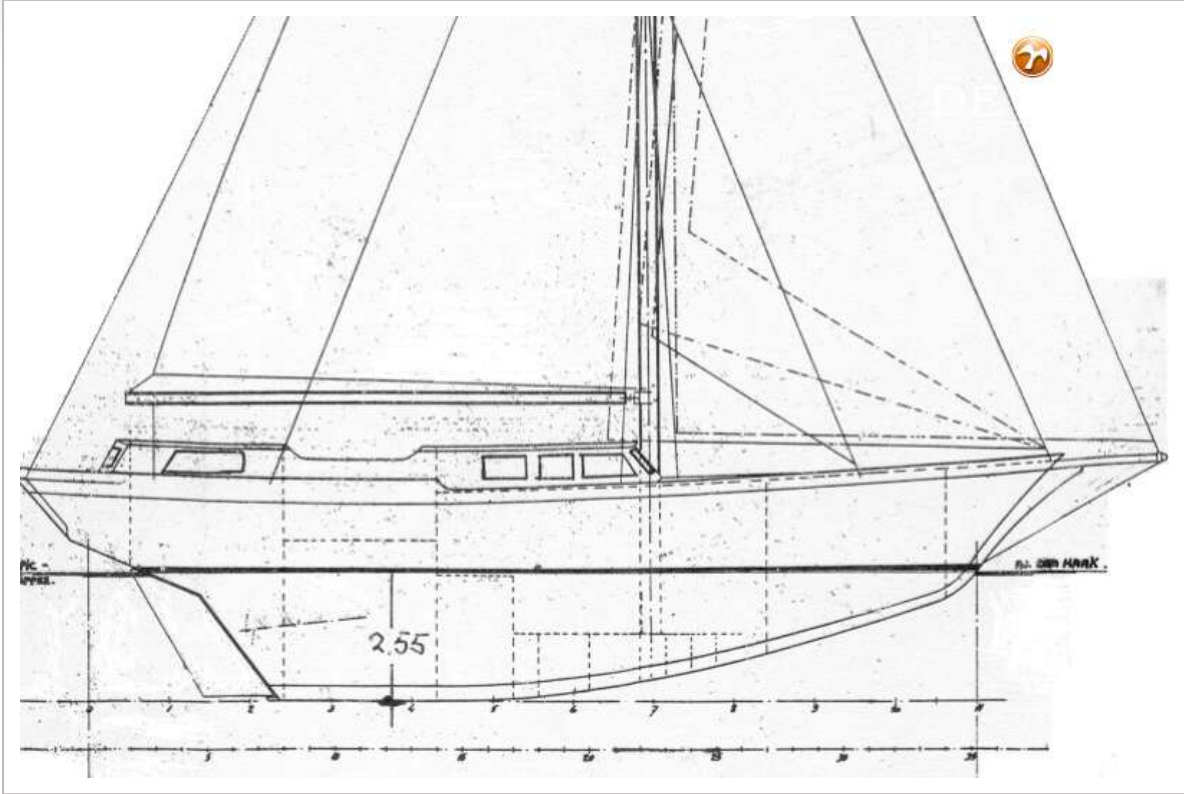
# PACIFIC CLIPPER 65



# PACIFIC CLIPPER 65



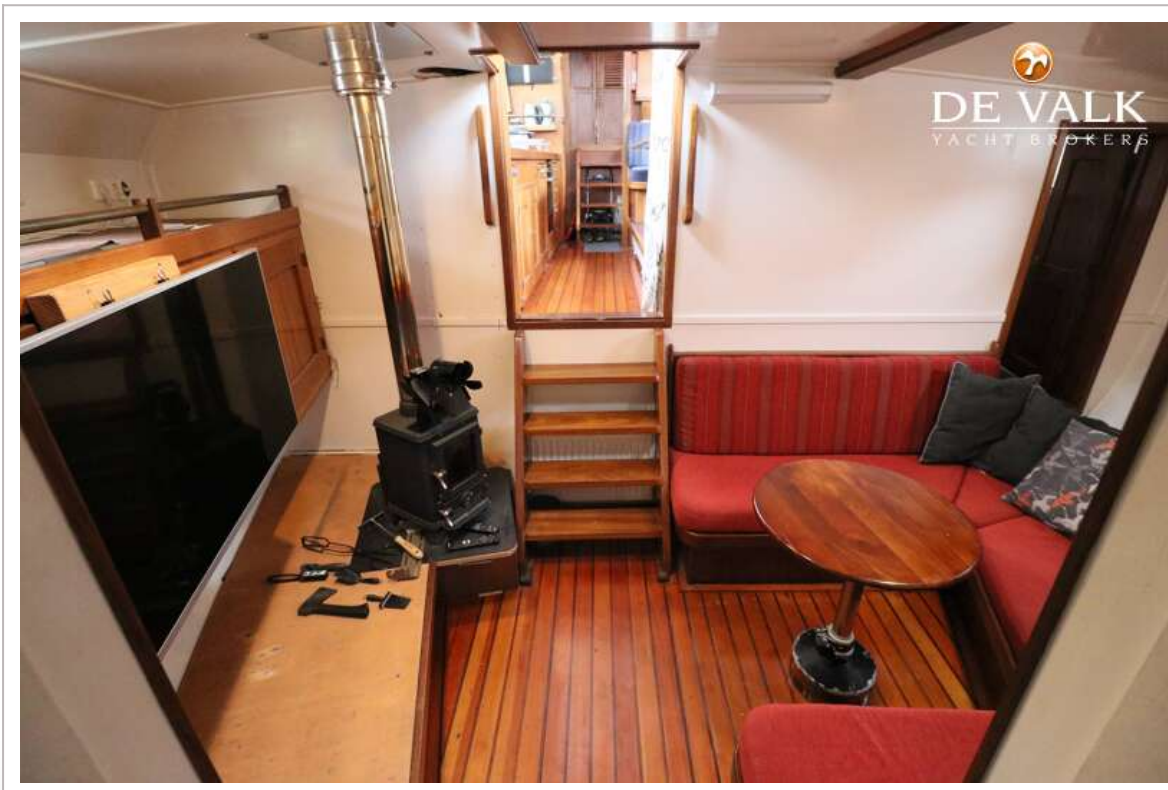
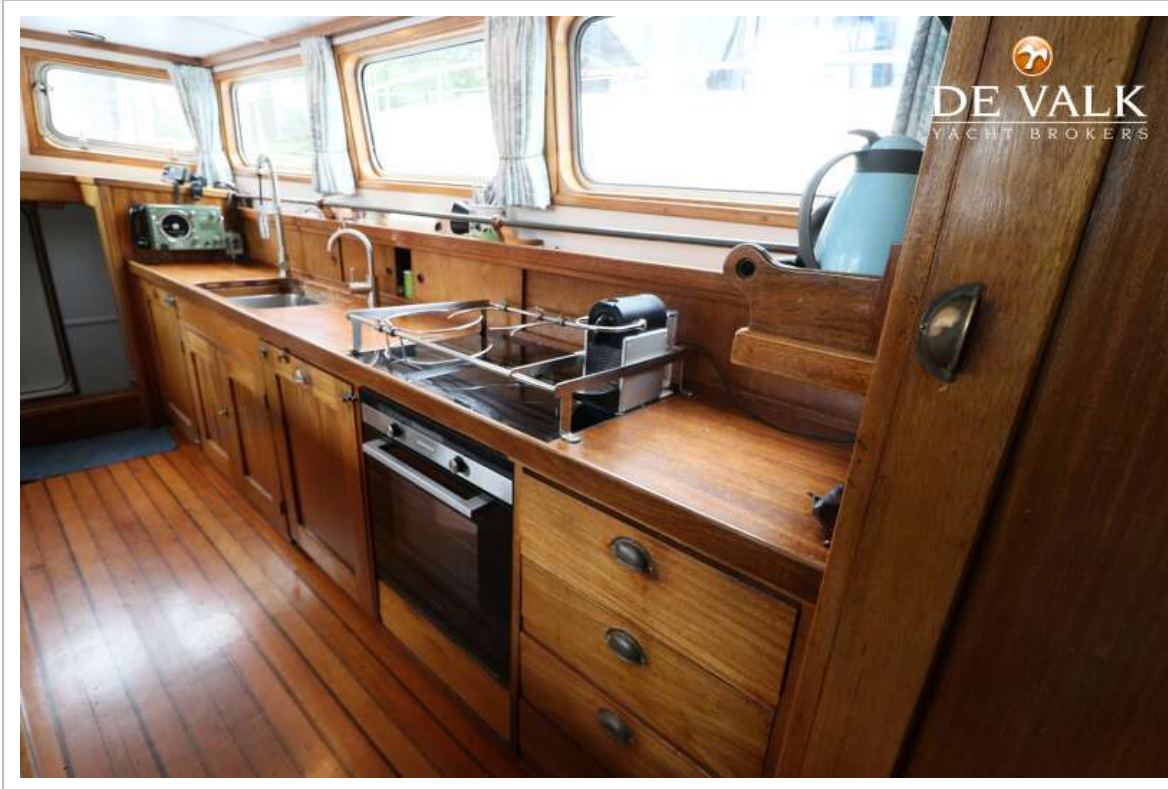
# PACIFIC CLIPPER 65



# PACIFIC CLIPPER 65



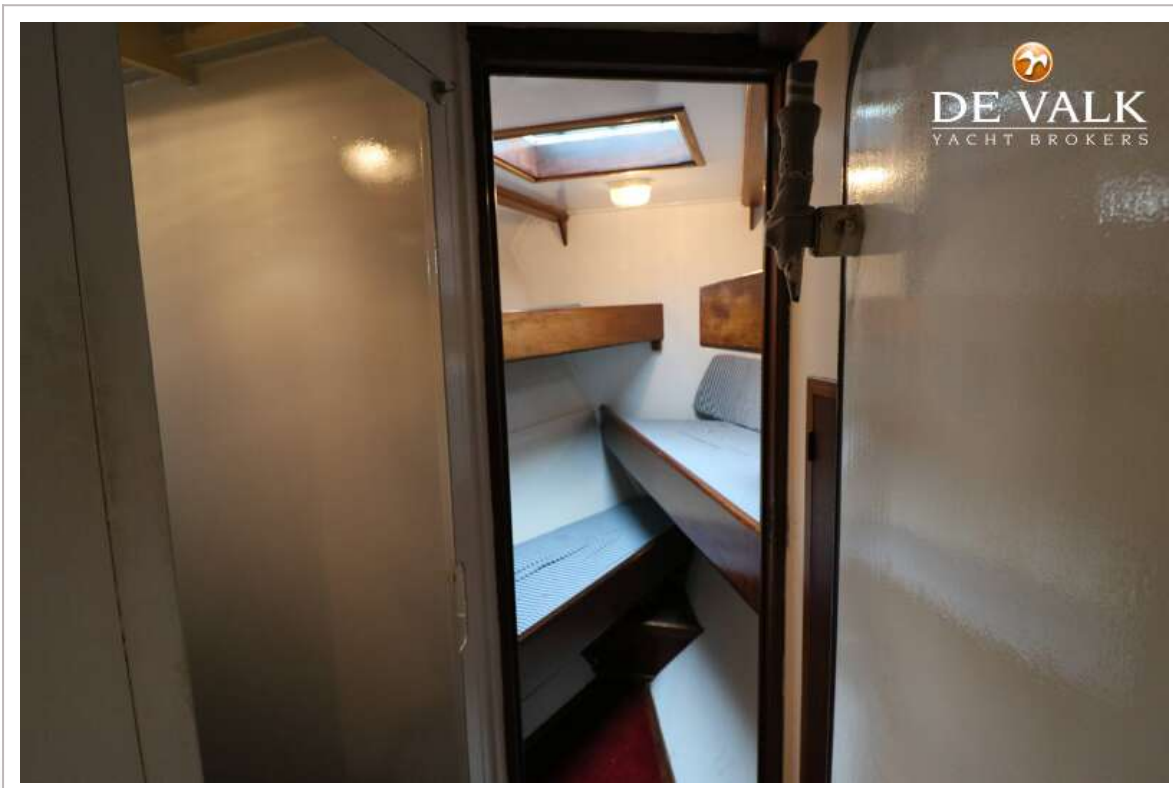
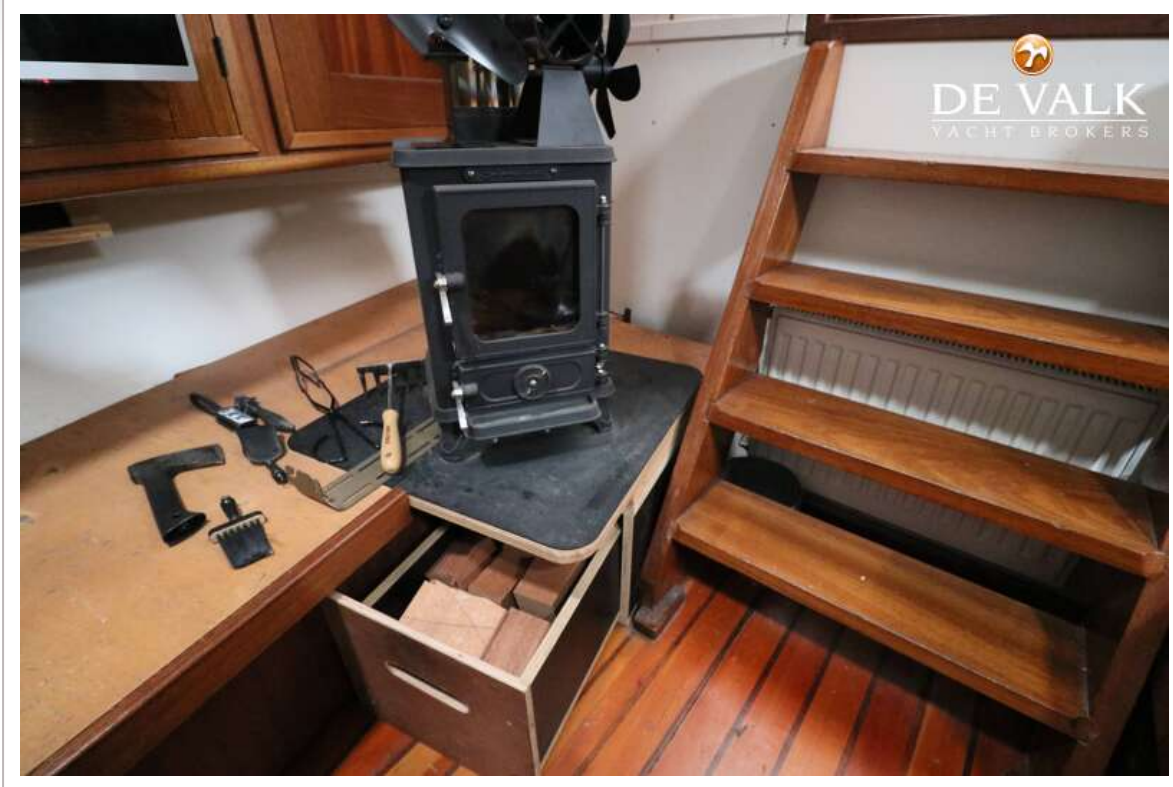
# PACIFIC CLIPPER 65



# PACIFIC CLIPPER 65



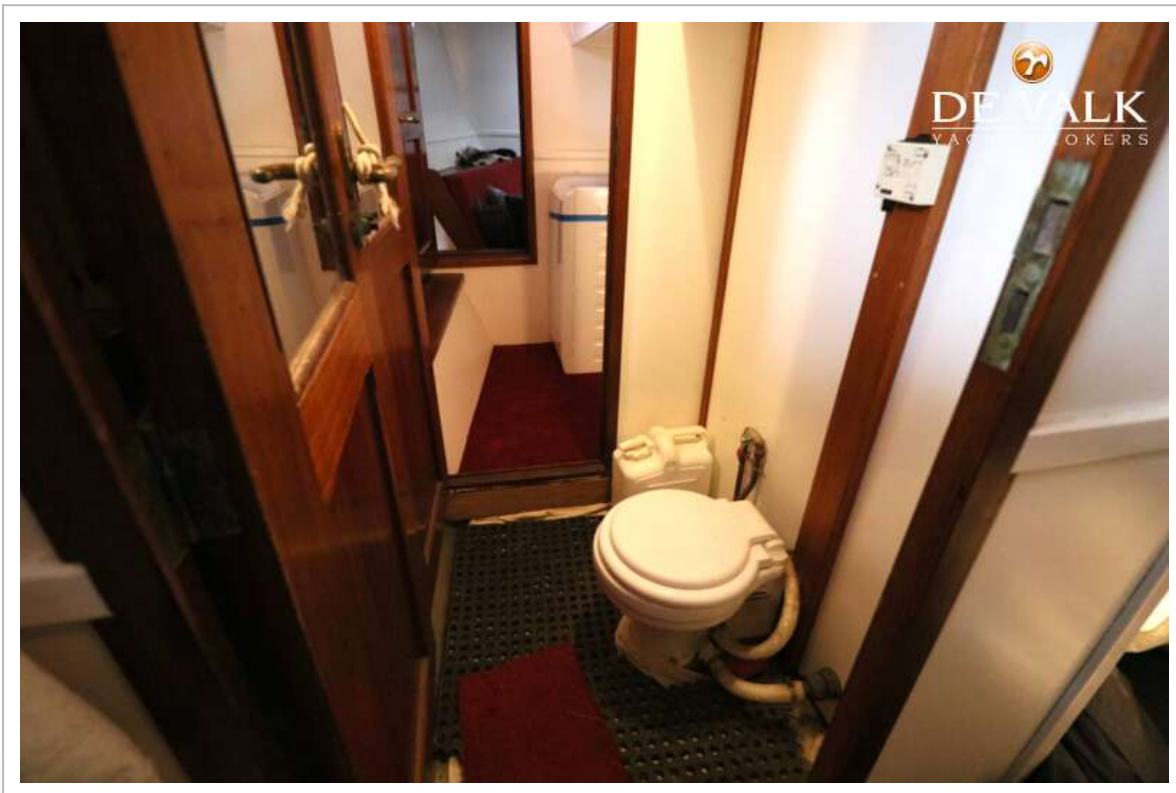
# PACIFIC CLIPPER 65



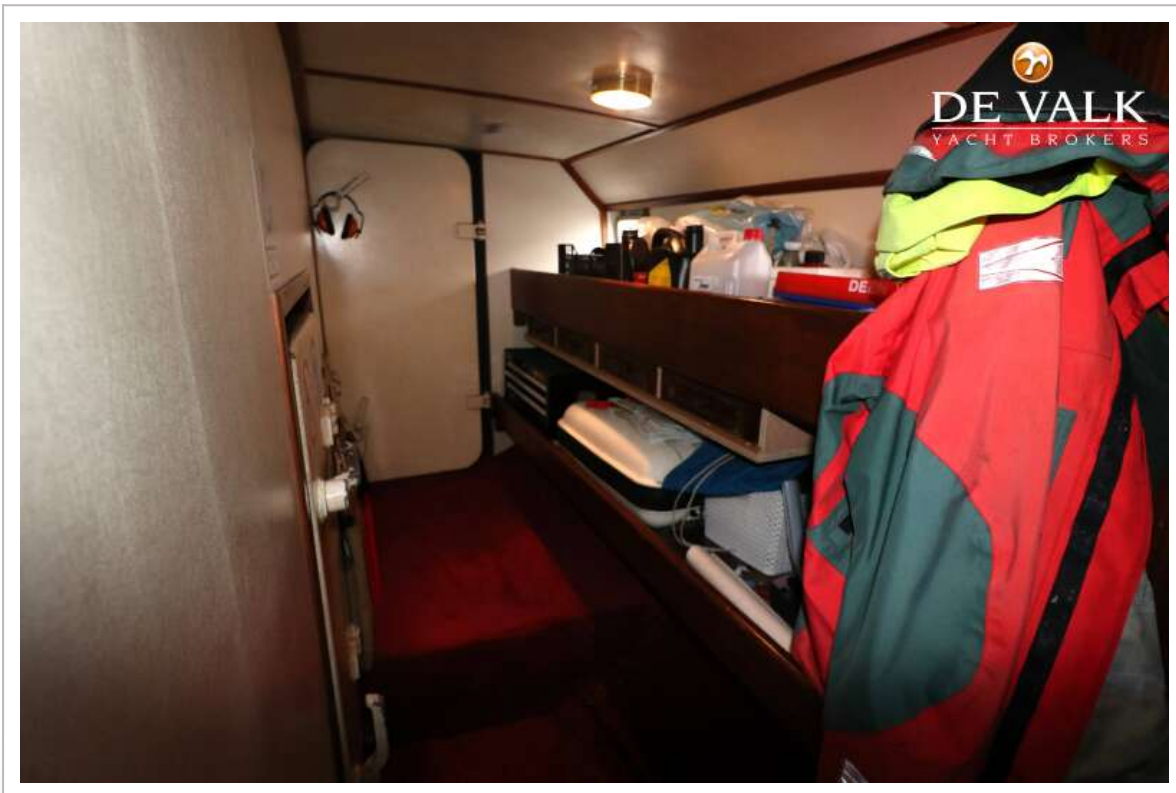
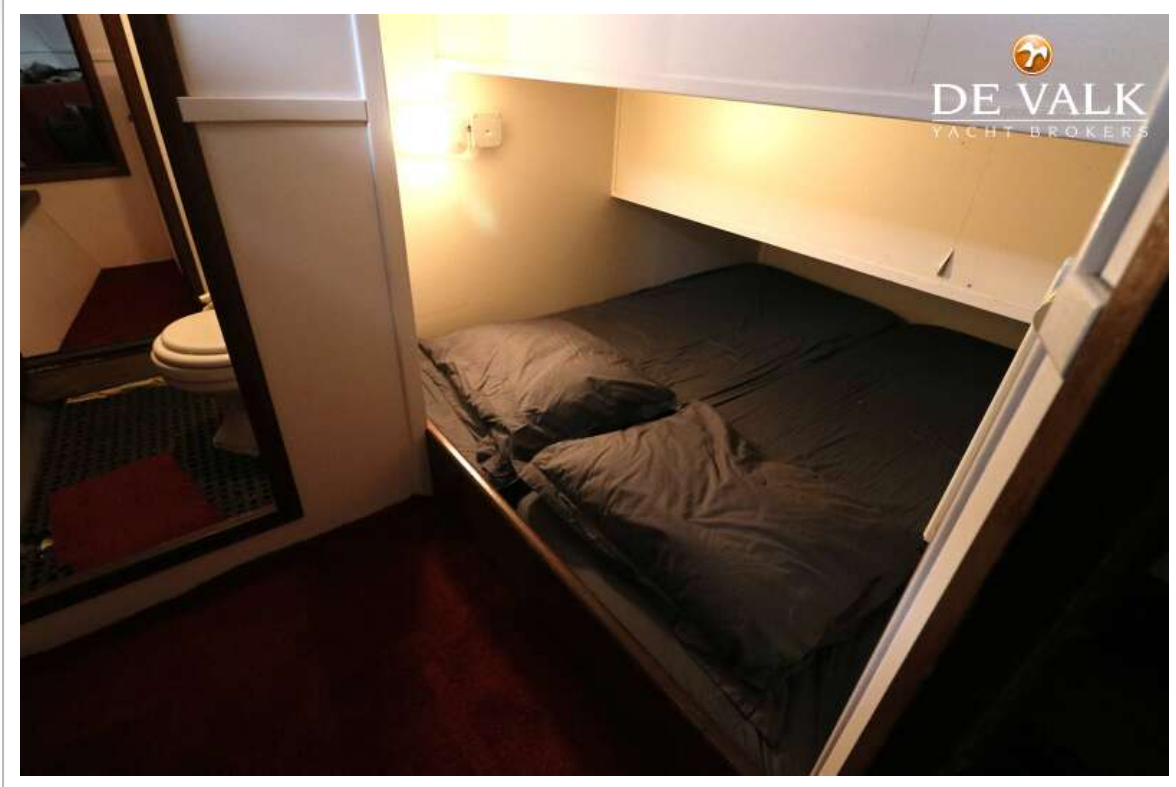
# PACIFIC CLIPPER 65



# PACIFIC CLIPPER 65



# PACIFIC CLIPPER 65



# PACIFIC CLIPPER 65



# PACIFIC CLIPPER 65

