



DE VALK  
YACHT BROKERS



## GIB SEA 33



DE VALK  
YACHT BROKERS

## BROKER'S COMMENTS

The Gib'Sea 334 (1994) is a comfortable and versatile cruising sailboat built by Gibert Marine in France. Measuring around 10 meters (33 feet) in length, it offers a spacious and practical layout for family cruising. The design features a wide beam, stable hull, and easy handling under sail, making it suitable for both coastal and offshore trips. Inside, the Gib'Sea 334 provides 2–3 cabins, a functional galley, saloon area, and ample storage, reflecting Gibert Marine's focus on comfort and practicality.

*Sofia Iliia-Salvanou*

## SPECIFICATIONS

<b>Dimensions</b>	9.75 x 3.44 x 1.87 (m)	<b>Builder</b>	GILBERT MARINE S.A.
<b>Built</b>	1994	<b>Cabins</b>	2
<b>Material</b>	GRP	<b>Berths</b>	4
<b>Engine(s)</b>	1 x YANMAR 3GMF diesel	<b>Hp/Kw</b>	27.00 (hp), 19.87 (kw)
<b>Asking price</b>	€ 45.000 (VAT Paid)	<b>Lying</b>	elsewhere / Not at sales office

## CONTACT

<b>Sales office</b>	De Valk Corfu	<b>Telephone</b>	(+30) 6948681503
<b>Address</b>	New Port of Corfu, near Gouvia Marina 490 83 Corfu GR	<b>E-mail</b>	corfu@devalk.nl

## DISCLAIMER

These particulars are given in good faith as supplied but cannot be guaranteed.



## GENERAL

<b>Model</b>	GIB SEA 33
<b>Type</b>	sailing yacht
<b>LOA (m)</b>	9,75
<b>LWL (m)</b>	8,25
<b>Beam (m)</b>	3,44
<b>Draft (m)</b>	1,87
<b>Headroom (m)</b>	1,83
<b>Year built</b>	1994
<b>Builder</b>	GILBERT MARINE S.A.
<b>Country</b>	France
<b>Designer</b>	M. Joubert & B. Nivelte
<b>Ballast (tonnes)</b>	1.200 Kg
<b>Gross tonnage</b>	4.000 Kg
<b>Hull material</b>	GRP
<b>Hull colour</b>	white
<b>Keel type</b>	fin keel
<b>Superstructure material</b>	GRP
<b>Deck material</b>	GRP
<b>Deck finish</b>	non-skid moulded in
<b>Superstructure deck finish</b>	non-skid moulded in
<b>Cockpit deck finish</b>	non-skid moulded in Cockpit seats: teak surface
<b>Antifouling (year)</b>	2025
<b>Window material</b>	perspex
<b>Deckhatch</b>	yes
<b>Portholes</b>	yes
<b>Fuel tank (litre)</b>	steel 1 x 140
<b>Freshwater tank (litre)</b>	polyethylene 1 x 450
<b>Blackwater tank (litre)</b>	polyethylene 1 x 60 Lt Plastimo
<b>Blackwater tank extraction</b>	Manual hand pump
<b>Wheel steering</b>	mechanical



Outside helm position	yes
Emergency tiller	yes

## ACCOMMODATION

Cabins	2
Berths	4
Layout	2 cabins 1 bathroom
Floor	wood Plus carpets in cabins
Saloon	yes
Dinette	yes
Opening door to cockpit	yes
Galley	yes
Countertop	yes
Sink	stainless steel Double with electric and foot pump fresh water supply
Cooker	calor gas 2 Gas rings
Oven	Color gas
Fridge	12 V or 240 V supply with ice box that makes ice & run on solar
Water pressure system	yes
Crockery	yes
Owners cabin	double bed
Bed length (m)	2m x 2m
Wardrobe	hanging and shelves Double
Bathroom	separate
Toilet	separate
Toilet system	manual
Wash basin	in the cabin
Shower	separate
Guest cabin 1	double bed
Wardrobe	yes
Bathroom	separate



Toilet	separate
Toilet system	manual
Wash basin	in the bathroom
Shower	separate

## MACHINERY

No of engines	1
Make	YANMAR
Type	3GMF
HP	27
kW	19.87
Fuel	diesel
Year installed	1994
Drive	shaft
Shaft seal	Replaced with new in 2025
Exhaust	Exhaust hose totally replaced
Propeller type	fixed
Propeller blades	3
Propeller shaft material	stainless steel
Manual bilge pump	yes
Electric bilge pump	yes
Electrical installation	yes
Batteries	yes
Start battery	1 x 55 AH
Service battery	1 X 120 AH & 1 X 55 AH
Battery charger	2 X 15Amp
Inverter	1 X 200 W
Solar panel	2 X 100 W
Shorepower	yes
Extra info	New PPS Stern Gland fitted 2025
Extra info	4 New engine mounts fitted 2025, New Impeller fitted 2025



**Extra info** Tappets on the engine checked & adjusted. New engine drive belt

## NAVIGATION

**Compass** yes  
**Depth sounder** RAYMARINE  
**Log** RAYMARINE  
**VHF** yes  
**VHF handheld** yes  
**Autopilot** AUTOHELM  
**Plotter/GPS** Standard Horizon CP180 but not fitted and without charts  
**Navigation lights** yes  
**Extra info** Most lights are LED including masthead anchor light LED.

## EQUIPMENT

**Sprayhood** NO  
**Bimini** yes  
**Sun awning** yes  
**Cockpit cushions** yes  
**Cockpit table** yes  
**Bathing platform** yes  
**Boarding ladder** yes  
**Gangway** yes  
**Deck shower** yes  
**Anchor** CQR Plough 35 Lb  
**Anchor chain** 60 m x 8 mm galvanised plus 25 m warp  
**Anchor 2** Stern anchor. Fishermans or Fortress F16 anchor  
**Anchor chain** 16 m x 10 mm plus 40m warp  
**Windlass** Lewmar Pro T2388, dual front & cockpit control & emergency stop  
**Dinghy** ADEC marine inflatable, 2 m  
**Outboard** HONDA BF2.3D, 2,4 Hp



<b>Sea railing</b>	yes
<b>Lifejackets</b>	yes
<b>Lifebuoy</b>	yes
<b>Fenders</b>	yes
<b>Mooring lines</b>	yes
<b>Fire extinguisher</b>	Need replacement.

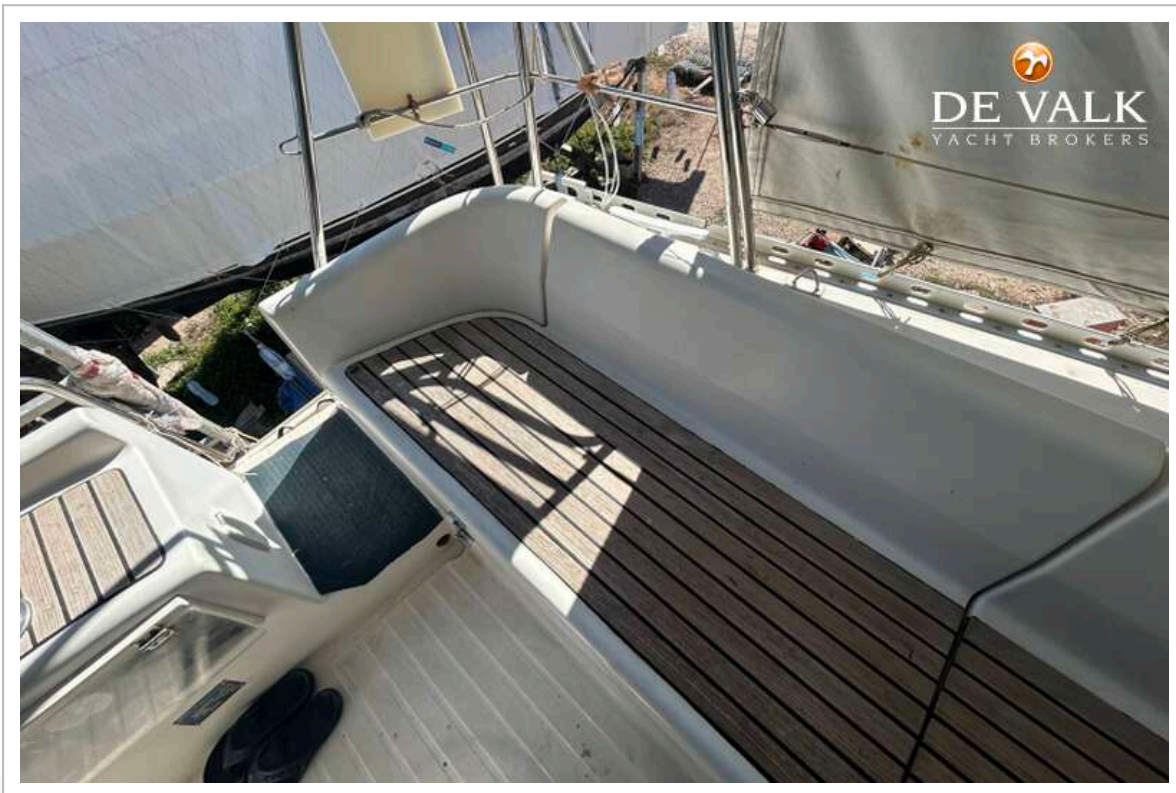
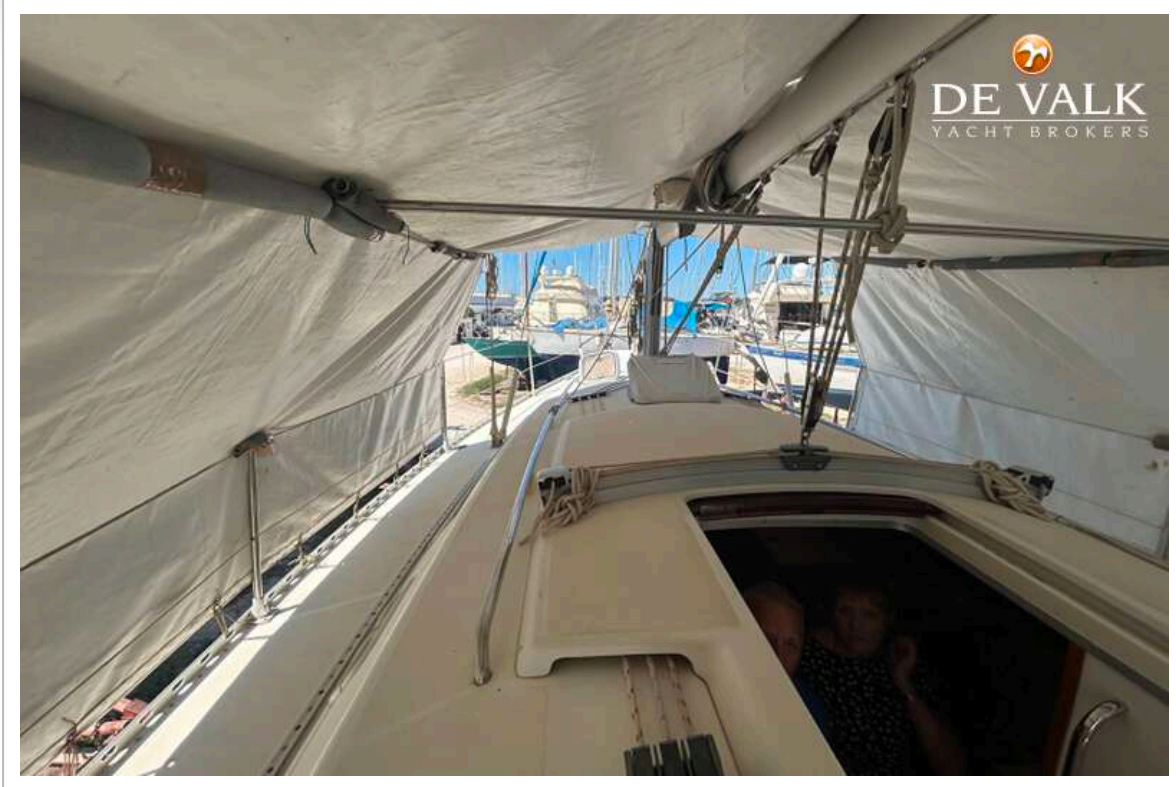
## RIGGING

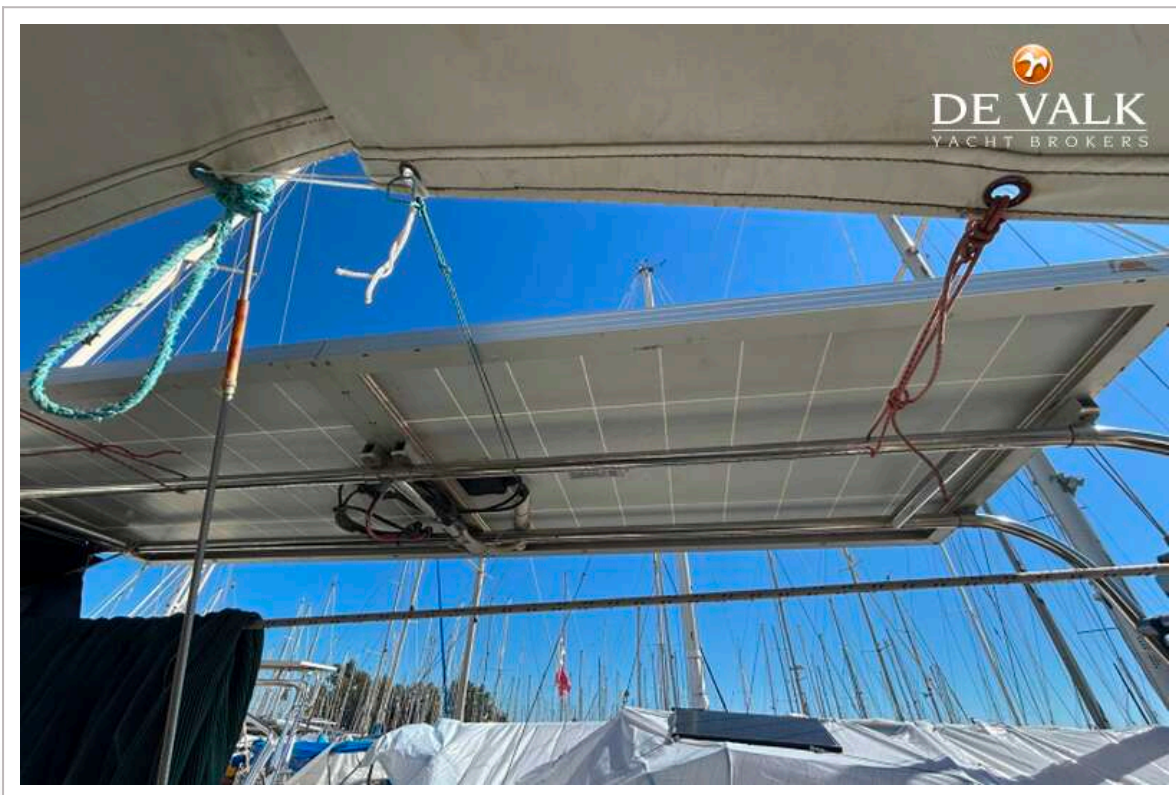
<b>Rigging</b>	yes
<b>Material mast</b>	aluminium
<b>Mainsail</b>	In mast reefing. Not new but in good order
<b>Genoa</b>	Roller reefing. Not new but in good order
<b>Multifunctional winches</b>	yes







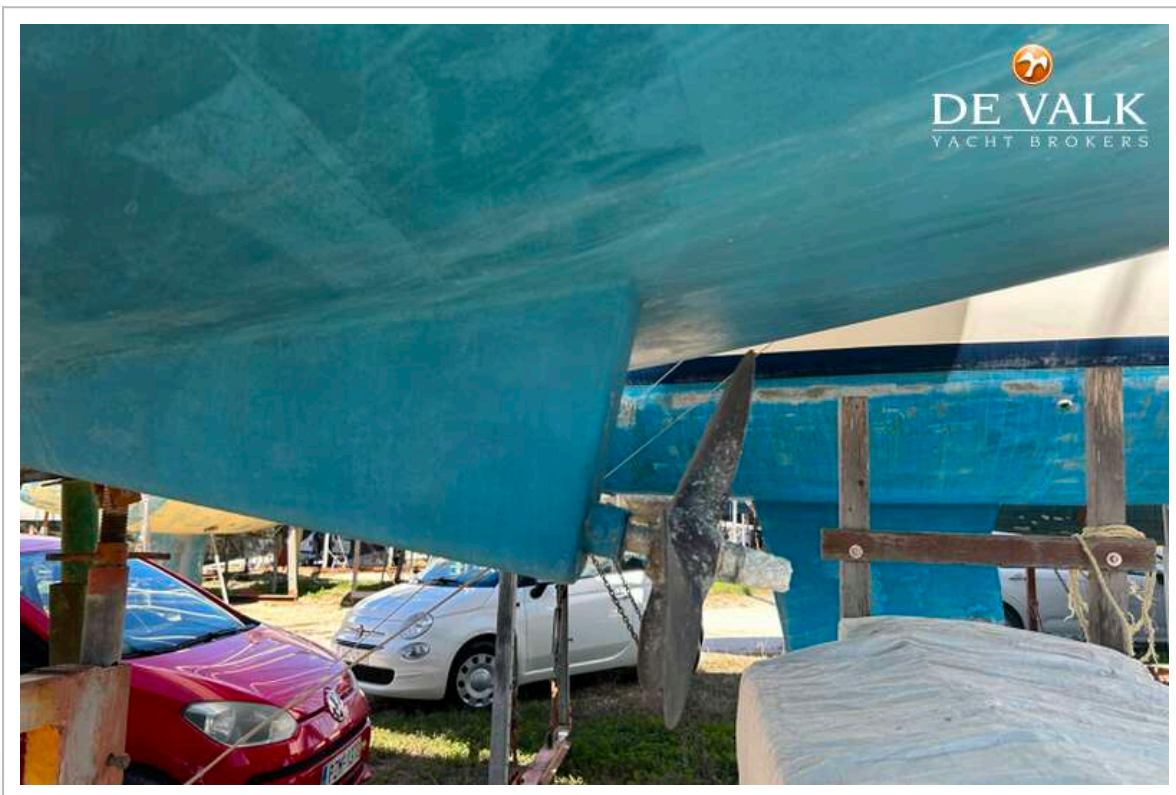


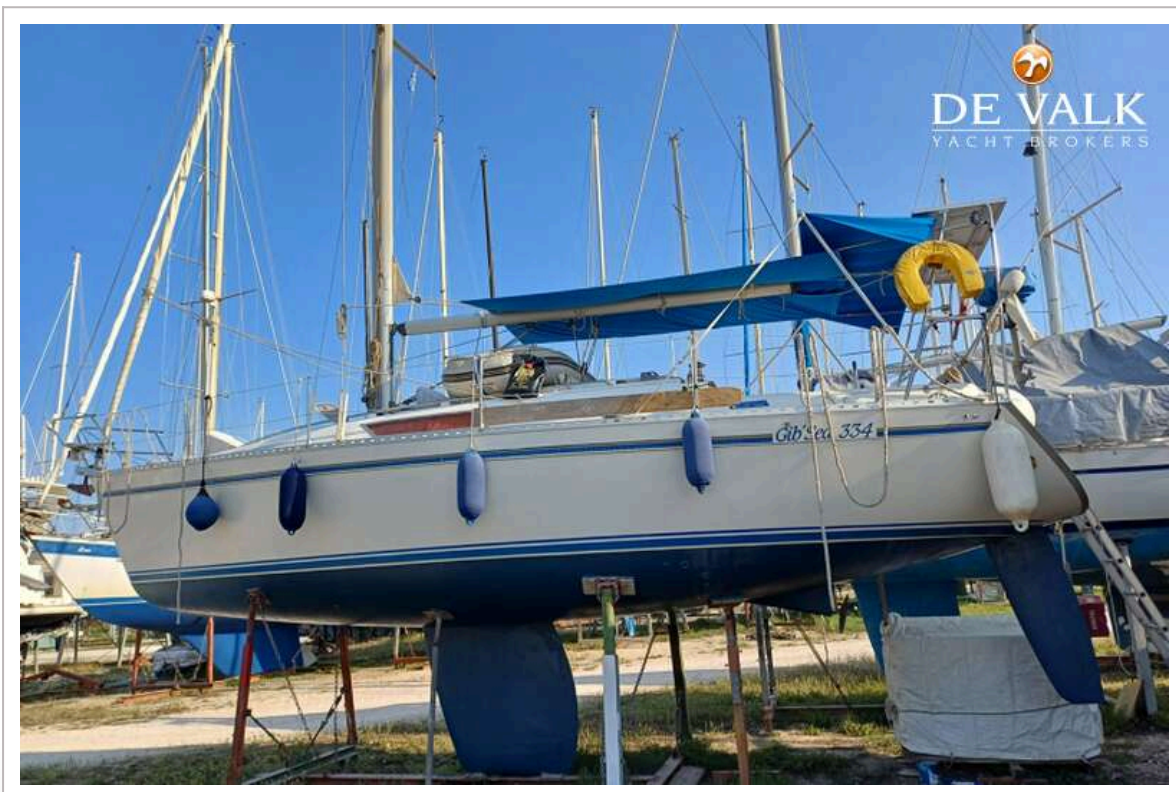






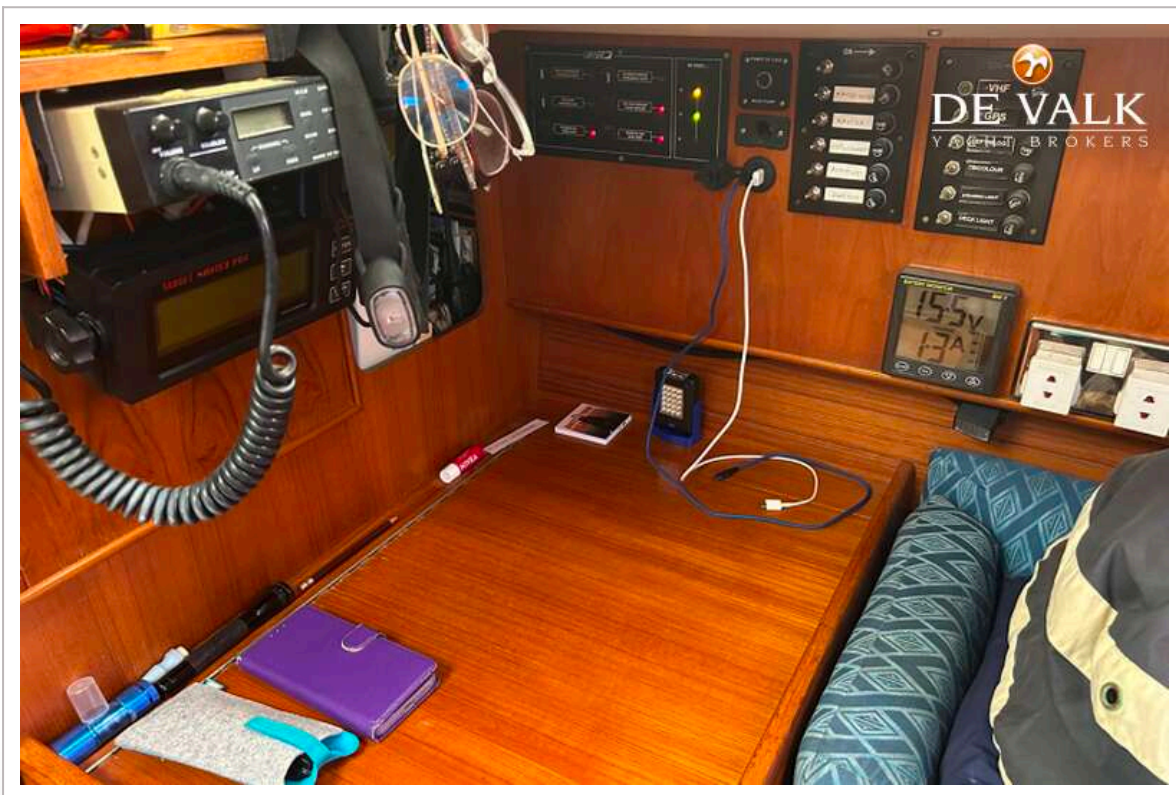




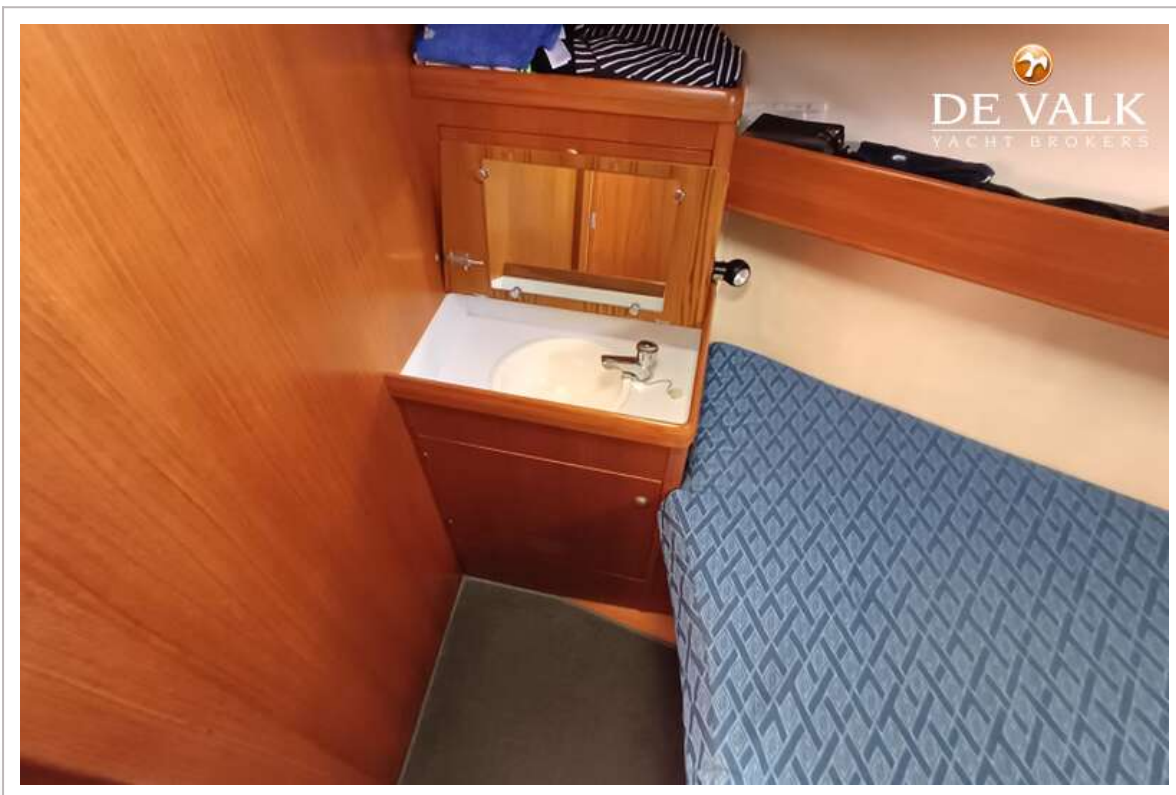


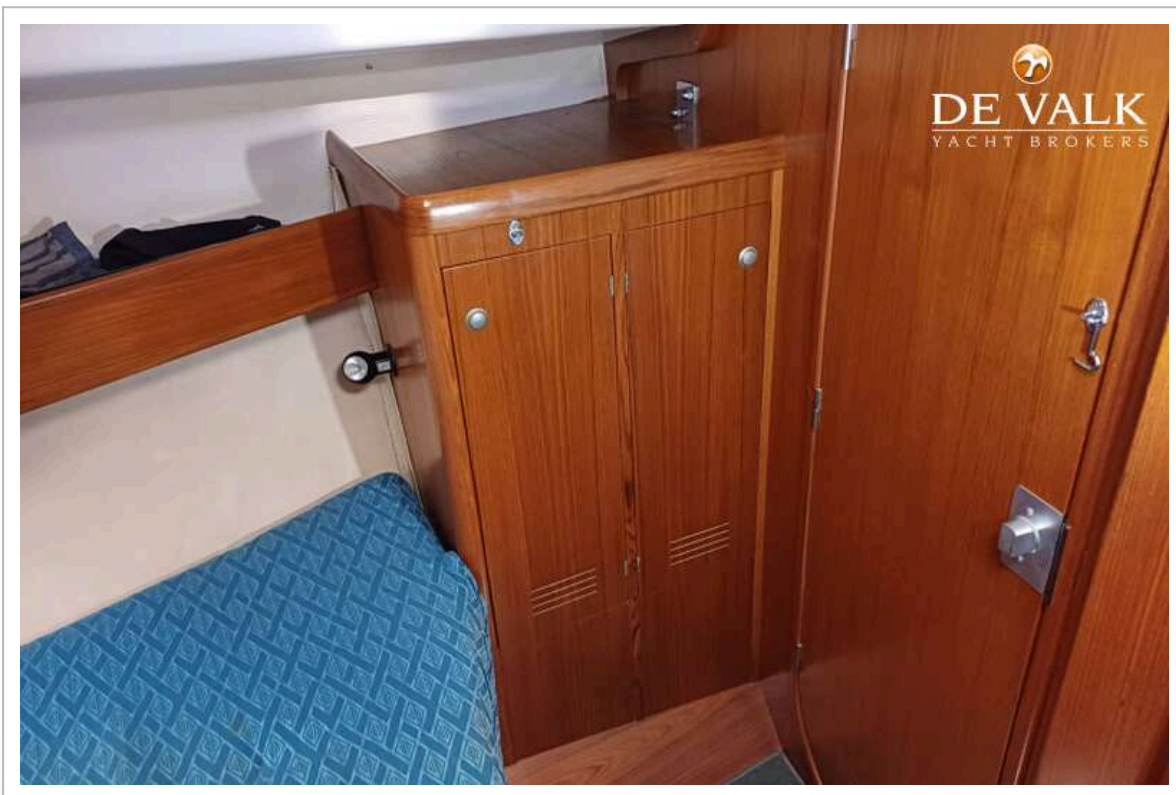
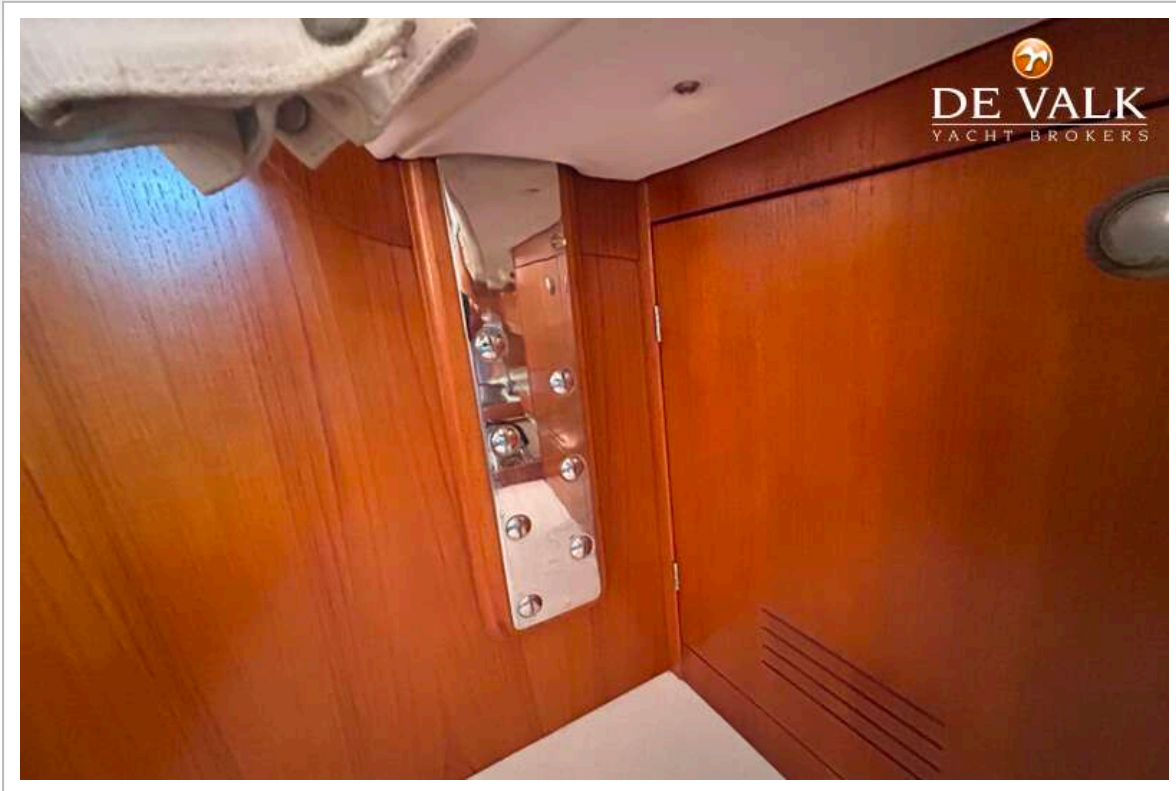






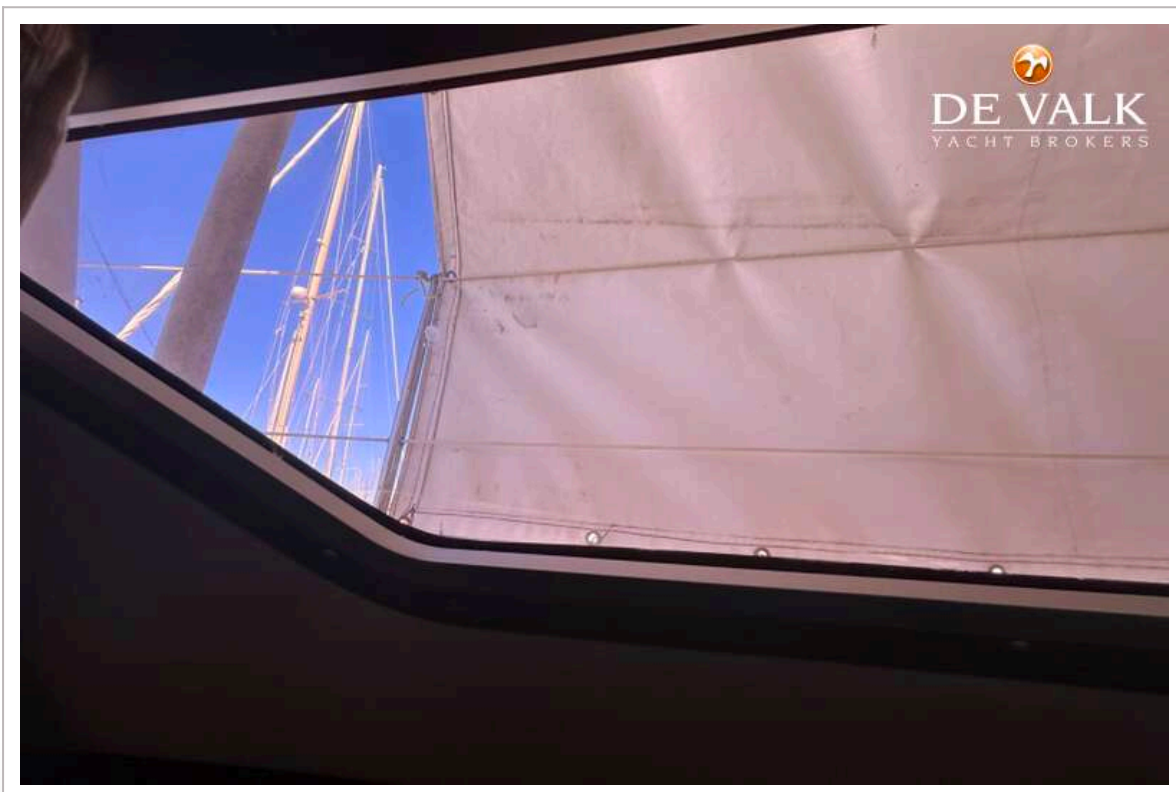






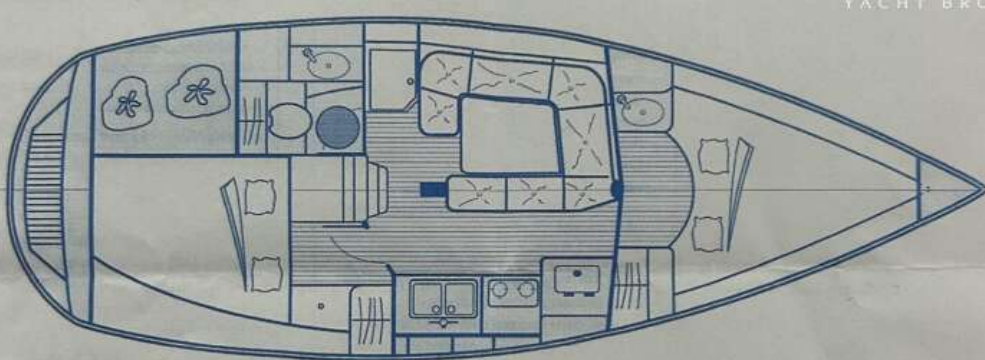






Architectes :  
Michel JOUBERT  
et Bernard Nivelte

**DE VALK**  
YACHT BROKERS



Caractéristiques principales	Main dimensions	Technische Daten
Longueur hors tout ..... 10,00 m	Length over all ..... 33'	Länge über Alles ..... 10,00 m

334  
**DE VALK**  
YACHT BROKERS  
**Propriétaire**

Architectes :  
Michel JOUBERT  
et Bernard Nivelte

