



DE VALK
YACHT BROKERS

HALLBERG RASSY 340



DE VALK
YACHT BROKERS

BROKERAGE | CHARTER | BERTHS | FINANCE | INSURANCE | YACHT MANAGEMENT

HALLBERG RASSY 340

BROKER'S COMMENTS

The 340 delivers the best Hallberg-Rassy stands for combined with the latest in design from Frers. This 340 was built in 2022 but launched in 2024, so you will find many aspects of the boat as brand new. She has a modern sail plan with a clean deck layout and a very generous interior. The yacht did the virgin passage from Sweden to the Med and is now located in Barcelona. Turn key ready as expected.

Tue Simon Fasting

SPECIFICATIONS

| | | | |
|---------------------|--------------------------------|----------------|-------------------------|
| Dimensions | 10.36 x 3.47 x 1,72 / 1.90 (m) | Builder | Hallberg Rassy Varvs AB |
| Built | 2022 | Cabins | 2 |
| Material | GRP | Berths | 4 |
| Engine(s) | 1 x Volvo Penta D1-30 diesel | Hp/Kw | 29.00 (hp), 21.34 (kw) |
| Asking price | € 395.000 (VAT Not paid) | Lying | at sales office |

CONTACT

| | | | |
|---------------------|---|------------------|---------------------|
| Sales office | De Valk Barcelona | Telephone | +34 932 202 825 |
| Address | Barcelona region 08392 Barcelona ES | E-mail | barcelona@devalk.nl |

DISCLAIMER

These particulars are given in good faith as supplied but cannot be guaranteed.



GENERAL

| | |
|------------------------------|---|
| Model | HALLBERG RASSY 340 |
| Type | sailing yacht |
| LOA (m) | 10,36 |
| Beam (m) | 3,47 |
| Draft (m) | 1,90 |
| Draft min (m) | 1,72 |
| Headroom (m) | 2,10 |
| Year built | 2022 |
| Launched | 2025 |
| Builder | Hallberg Rassy Varvs AB |
| Country | Sweden |
| Displacement (t) | 9,89 |
| CE norm | A |
| Hull material | GRP |
| Hull colour | white |
| Hull shape | Mono hull with "plump foreship" for good handling |
| Keel type | Bulbed fixed led |
| Superstructure material | GRP |
| Deck material | Fiberglass sandwich laminate |
| Deck finish | synthetic teak |
| Cockpit deck finish | synthetic teak |
| Antifouling (year) | 2025 |
| Window frame | stainless steel |
| Window material | tempered glass |
| Fuel tank (litre) | 188 |
| Level indicator (fuel tank) | yes |
| Freshwater tank (litre) | 277 |
| Level indicator (freshwater) | yes |
| Blackwater tank (litre) | 88 |
| Blackwater tank extraction | deck extraction + pump |



HALLBERG RASSY 340

| | |
|------------------------|--|
| Wheel steering | Twin steering |
| Emergency tiller | yes |
| More info on paintwork | Mint conditions |
| Extra info | Nominated Boat of the year 2022 in Cruising World Magazine USA |
| Extra info | European Yacht of the Year 2019, in the category Family cruiser. |

ACCOMMODATION

| | |
|-----------------------|------------------------------------|
| Cabins | 2 |
| Berths | 4 |
| Interior | teak |
| Floor | teak and holly |
| Open cockpit | Deep safe cockpit |
| Heating | Webasto |
| Galley | yes |
| Sink | corian |
| Cooker | calor gas Eno |
| Oven | Eno |
| Freezer | yes |
| Hot water system | 220V + engine |
| Water pressure system | electrical Johnson SPX 12V WPS 2,4 |
| Owners cabin | v-bed Forward double |
| Bed length (m) | 2,04 |
| Wardrobe | hanging/drawers/shelves |
| Bathroom | shared |
| Toilet system | manual Jabsco |
| Wash basin | yes |
| Shower | yes |
| Guest cabin 1 | double bed Aft port side |
| Bed length (m) | 1,98 |
| Wardrobe | hanging/drawers/shelves |



HALLBERG RASSY 340

Bathroom shared

MACHINERY

| | |
|---------------------------------|-------------------------------------|
| No of engines | 1 |
| Make | Volvo Penta |
| Type | D1-30 |
| HP | 29 |
| kW | 21.34 |
| Fuel | diesel |
| Year installed | 2022 |
| Maximum speed (kn) | 7,5 |
| Cruising speed (kn) | 6 |
| Drive | sail-drive |
| Bowthruster | electric Side power 4hp retractable |
| Propeller blades | 3 |
| Propeller shaft material | stainless steel |
| Electric bilge pump | yes |
| Start battery | yes |
| Service battery | yes |
| Bowthruster battery | yes |
| Battery charger | Mastervolt |
| Shorepower | with cable 25m - 16 Amp |

NAVIGATION

| | |
|------------------------------|-----------------|
| Compass | yes |
| Electric compass | yes |
| Multi control display | Raymarine Axiom |
| Depth sounder | yes |
| VHF | yes |
| VHF handheld | yes |
| Autopilot | Raymarine |



| | |
|------------------------|--------------|
| Rudder angle indicator | yes |
| Radar | Raymarine |
| EPIRB | Tron 60AIS |
| Searchlight | LED portable |

EQUIPMENT

| | |
|----------------------|---------------------------------|
| Fixed windscreen | yes |
| Sprayhood | yes |
| Bathing platform | yes |
| Anchor | yes |
| Anchor chain | yes |
| Windlass | electrical |
| Windlass aft | electrical 4 |
| Life raft | yes |
| Safety harness | Spinlock |
| Lifebuoy | Horseshue Buoy - self inflating |
| Safety lines on deck | yes |
| Horn | yes |
| Radar reflector | yes |
| Fenders | Hallberg Rassy |
| Extra info | Jack lines Wichard 7052 |

RIGGING

| | |
|-------------------------|--|
| Rigging | sloop Easy to handle |
| Standing rigging | wire |
| Material mast | aluminium |
| Mainsail | Elvstrøm's FAT Furl: high-performance in-mast furling mainsail |
| Battcars | yes |
| Fully battened mainsail | Vertical |
| Genoa | Elvstrøm |
| Reefing System | main in-mast furling Selden |





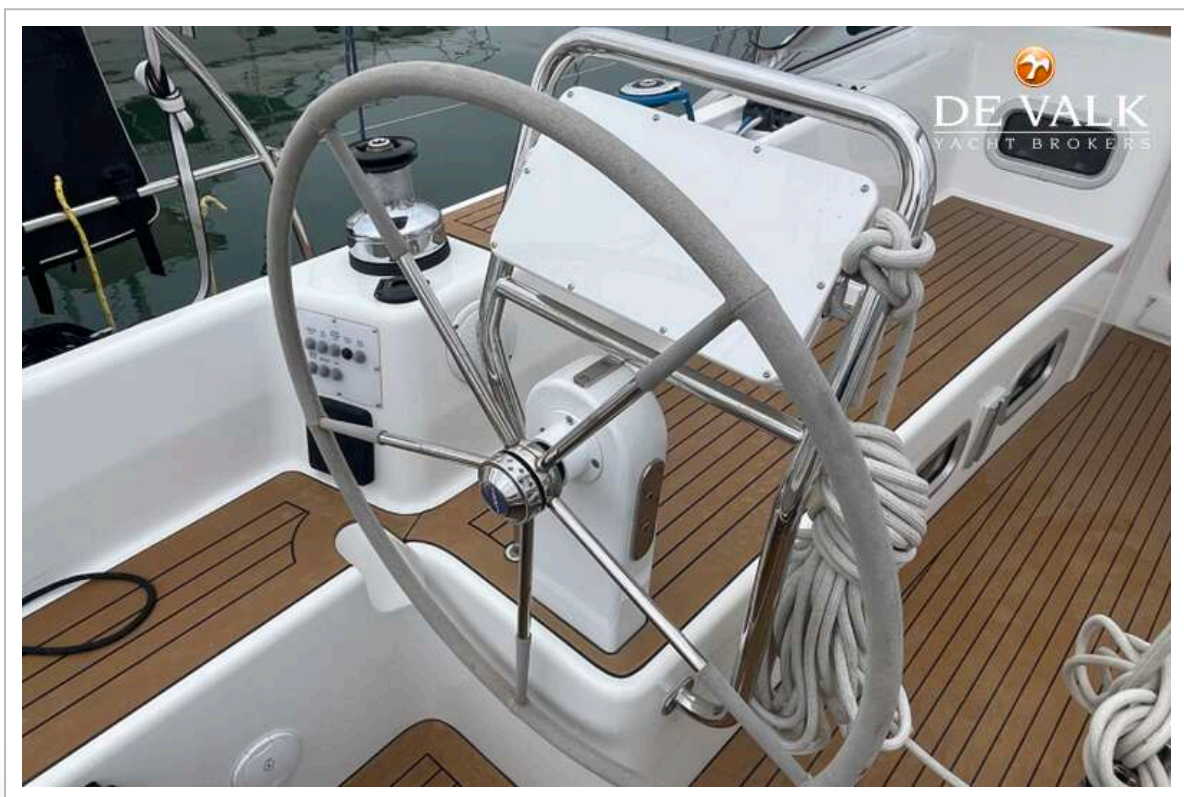
HALLBERG RASSY 340



HALLBERG RASSY 340



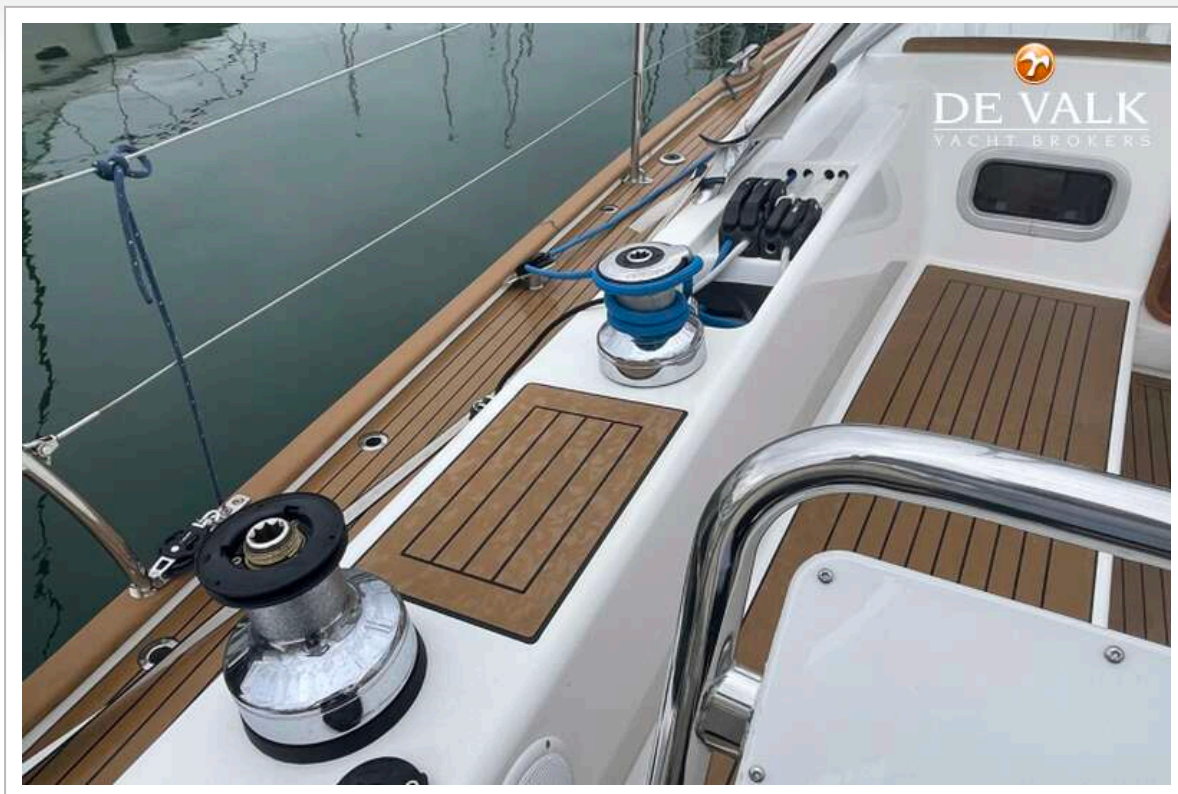
HALLBERG RASSY 340



HALLBERG RASSY 340



HALLBERG RASSY 340



HALLBERG RASSY 340



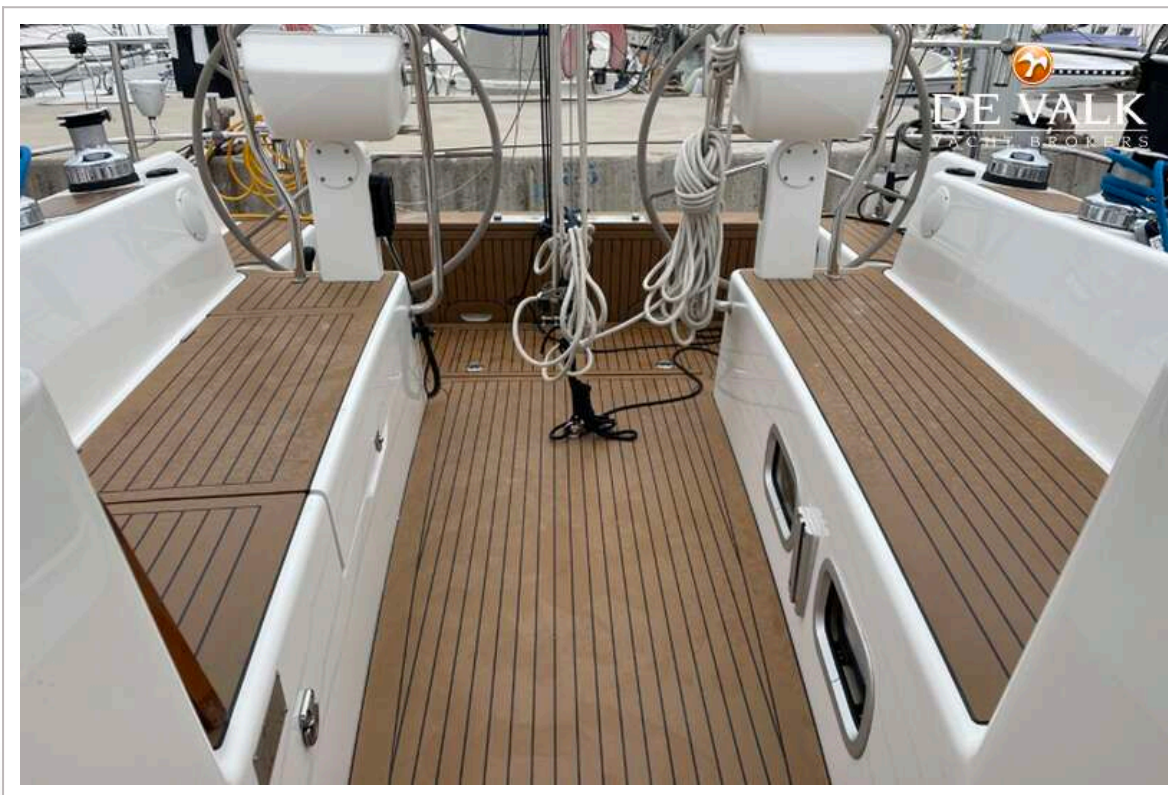
HALLBERG RASSY 340



HALLBERG RASSY 340



HALLBERG RASSY 340



HALLBERG RASSY 340



HALLBERG RASSY 340



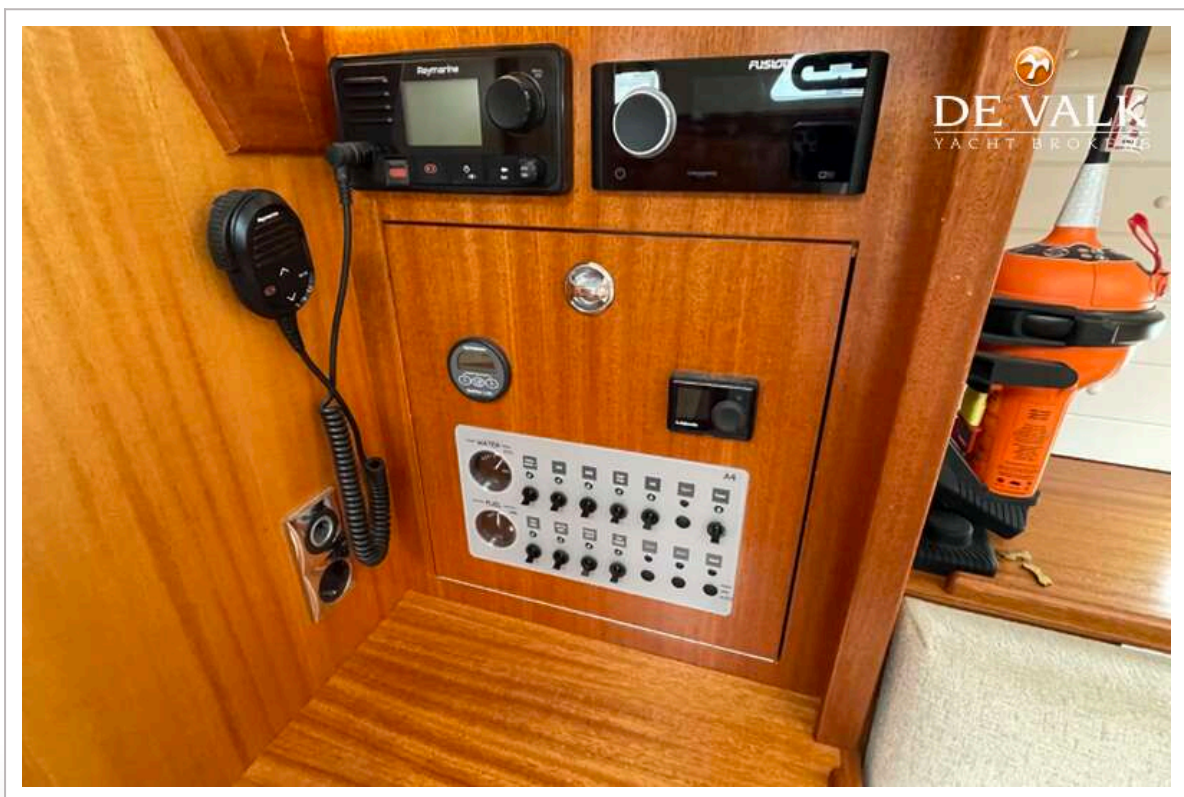
HALLBERG RASSY 340



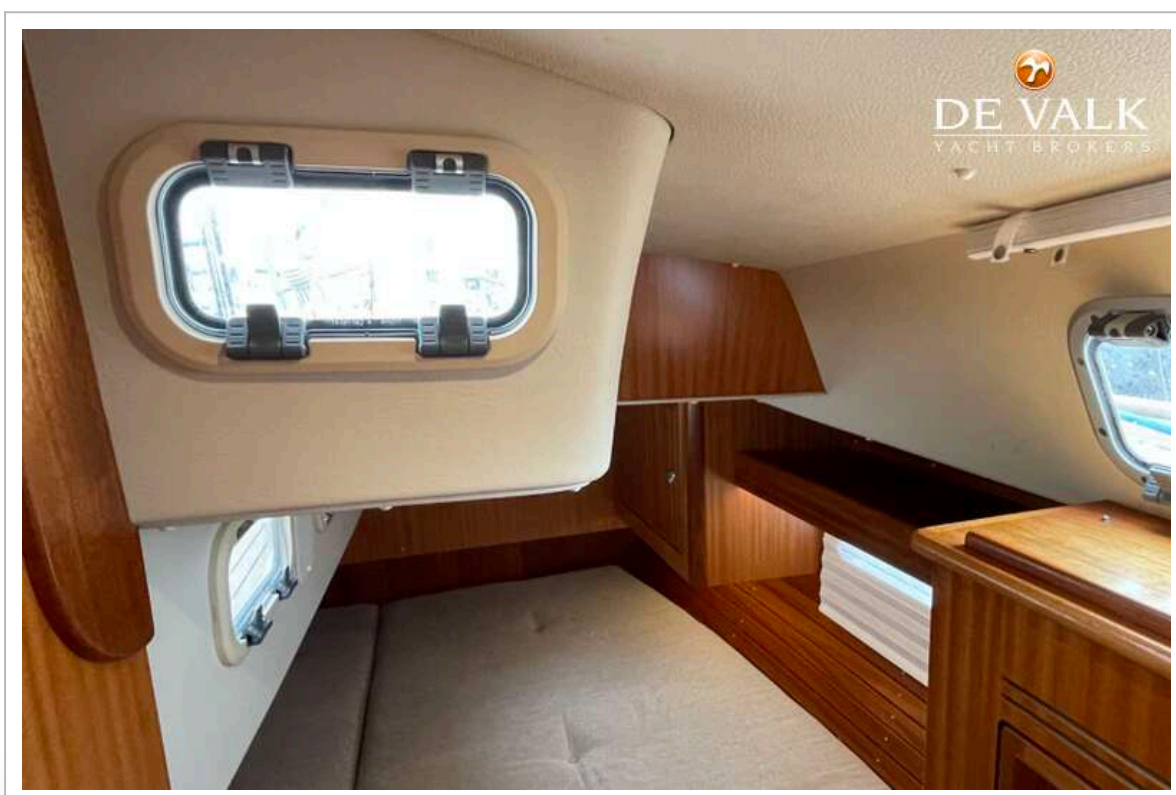
HALLBERG RASSY 340



HALLBERG RASSY 340



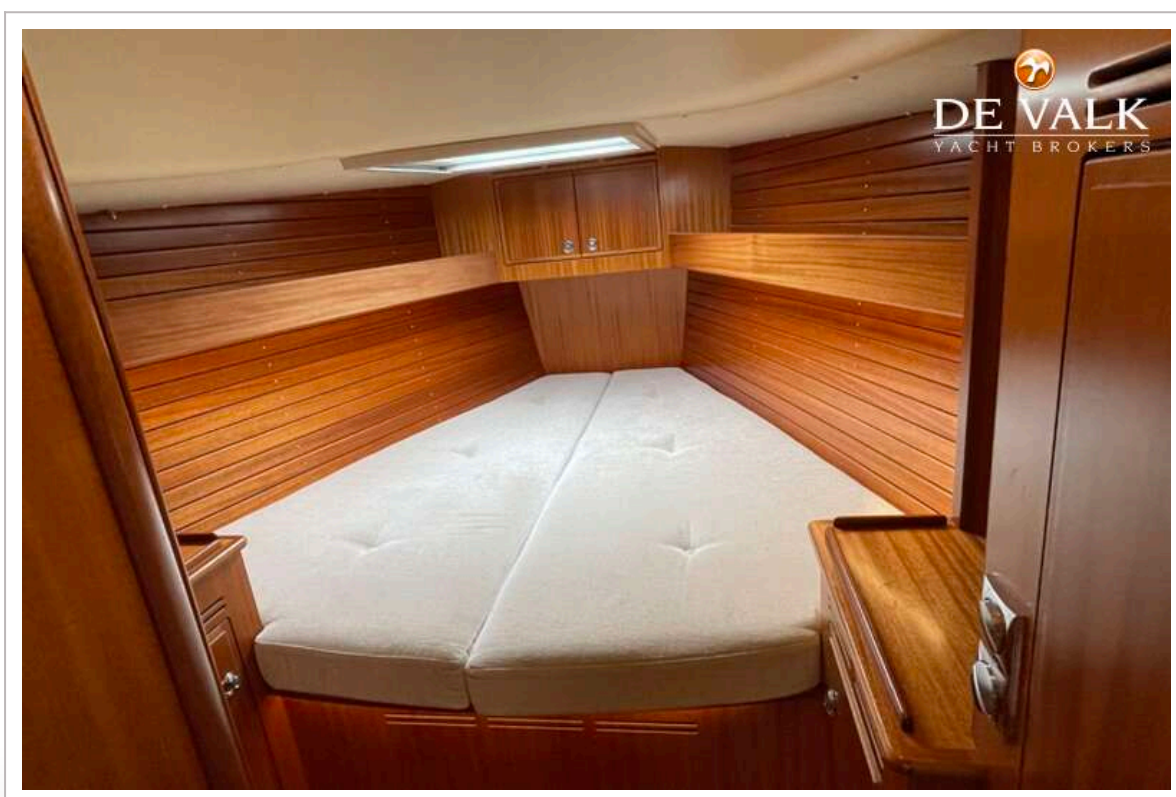
HALLBERG RASSY 340



HALLBERG RASSY 340



HALLBERG RASSY 340



HALLBERG RASSY 340



HALLBERG RASSY 340

