



DE VALK
YACHT BROKERS



CLASSIC 7 KR CRUISER/RACER



DE VALK
YACHT BROKERS

CLASSIC 7 KR CRUISER/RACER

BROKER'S COMMENTS

This beautiful 7KR yacht is in excellent condition. The hull was completely repainted in 2024, along with the deck superstructure, and the wood was also restored. All standing rigging was replaced in 2025. The charm of this yacht is not only evident in the excellent care taken with the interior and exterior, but also when sailing. Its sailing characteristics are thrilling and offer tremendous safety. Arrange a viewing appointment – it's really worth it.

Hartmut Ross

SPECIFICATIONS

Dimensions	11.50 x 3.05 x 1.80 (m)	Builder	Paul Böhling Erft Hamburg
Built	1968	Cabins	1
Material	Steel	Berths	5
Engine(s)	1 x Mercedes-Benz OM636 diesel	Hp/Kw	0.00 (hp), 0.00 (kw)
Asking price	€ 89.000 (VAT Exempt)	Lying	contact Kiel

CONTACT

Sales office	De Valk Kiel	Telephone	+49 1712312133
Address	Hermann Rennerstrasse 12 22609 Hamburg DE	E-mail	kiel@devalk.nl

DISCLAIMER

These particulars are given in good faith as supplied but cannot be guaranteed.



CLASSIC 7 KR CRUISER/RACER

GENERAL

Model	CLASSIC 7 KR CRUISER/RACER
Type	sailing yacht
LOA (m)	11,50
Beam (m)	3,05
Draft (m)	1,80
Headroom (m)	1,97
Year built	1968
Launched	1970
Builder	Paul Böhling Erft Hamburg
Country	Germany
Designer	Paul Böhling
Displacement (t)	8,5
Hull material	steel
Hull colour	white
Keel type	long keel
Superstructure material	mahogany
Rubbing strake	wood
Deck material	wood
Deck finish	teak
Cockpit deck finish	teak
Antifouling (year)	2025
Dorades	6
Window frame	stainless steel
Window material	polycarbonate
Insulation	foam plates
Fuel tank (litre)	steel 180
Level indicator (fuel tank)	Manual
Freshwater tank (litre)	steel Ca. 2 x 90l
Blackwater tank (litre)	yes
Blackwater tank extraction	yes



CLASSIC 7 KR CRUISER/RACER

Wheel steering	hydraulic
Outside helm position	yes
Emergency tiller	yes
More info on hull	Hull completely sandblasted in 1996
More info on paintwork	New painted 2024

ACCOMMODATION

Cabins	1
Berths	5
Interior	mahogany
Floor	wood
Open cockpit	yes
Saloon	yes
Headroom saloon (m)	1,97
Navigation center	yes
Chart table	yes
Dinette to convert into berth	yes
Opening door to cockpit	yes
Galley	yes
Countertop	wood
Sink	stainless steel
Fridge	2
Water pressure system	yes
Owners cabin	v-bed
Bed length (m)	1,97
Wardrobe	hanging/drawers/shelves
Bathroom	separate
Toilet	en suite
Toilet system	manual
Wash basin	in the bathroom



CLASSIC 7 KR CRUISER/RACER

MACHINERY

No of engines	1
Make	Mercedes-Benz
Type	OM636
Fuel	diesel
Year installed	1969
Year of overhaul	Regularly
Cruising speed (kn)	5
Consumption (l/hr)	4
Engine cooling system	closed keelcooling
Shaft seal	New
Gearbox	Paragon
Bowthruster	electric Vetus
Exhaust	yes
Propeller type	fixed
Propeller blades	3
Shaft lubrication	water
Manual bilge pump	yes
Electric bilge pump	yes
Electrical installation	yes
Start battery	2
Service battery	2
Battery monitor	yes
Battery charger	yes
Inverter	yes
Shorepower	with cable

NAVIGATION

Compass	Henry Browne & Son Lt. Sestrel Barking & London
Electric compass	yes
Depth sounder	New 2025



CLASSIC 7 KR CRUISER/RACER

Log	New 2025
Windset	yes
VHF	yes
Autopilot	yes
Rudder angle indicator	yes
GPS	yes
Plotter/GPS	Garmin GPSMAP 922 Plus
Electronic chart(s)	yes
Navigation lights	yes
Loudhailer	yes

EQUIPMENT

Fixed windscreen	yes
Sprayhood	New 2022
Sprayhood with grab rail	yes
Cockpit cover	New 2025
Cockpit cushions	yes
Cockpit table	yes
Boarding ladder	yes
Anchor	Separate chain box made of GRP
Anchor chain	40 m x 10 mm
Windlass	electrical
Sea railing	stainless steel New seerelings wires in 2025
Grab rail (superstructure)	stainless steel
Pushpit	New 2025
Fenders	yes
Mooring lines	yes
Spare parts	yes
Radio-cd player	yes
Speakers in salon	yes
Clock - barometer	yes



CLASSIC 7 KR CRUISER/RACER

RIGGING

Rigging	sloop
Standing rigging	wire New 2025
Material mast	aluminium
Spreaders	2
Mainsail	yes
Mainsail cover	Lazy-Jacks
Fully battened mainsail	yes
Cutterstay	yes
Jib I	yes
Genoa II	yes
Cutter furler	yes
Reefing System	slabreefing
Backstay adjuster	yes
Boomvang	tackle
Primary sheet winch	Lewmar 43
Secondary sheet winch	Lewmar 40
Halyard winches	Setamar 780/42-2
Reefing winch	Lewmar 30
Gennaker pole	yes



CLASSIC 7 KR CRUISER/RACER



CLASSIC 7 KR CRUISER/RACER



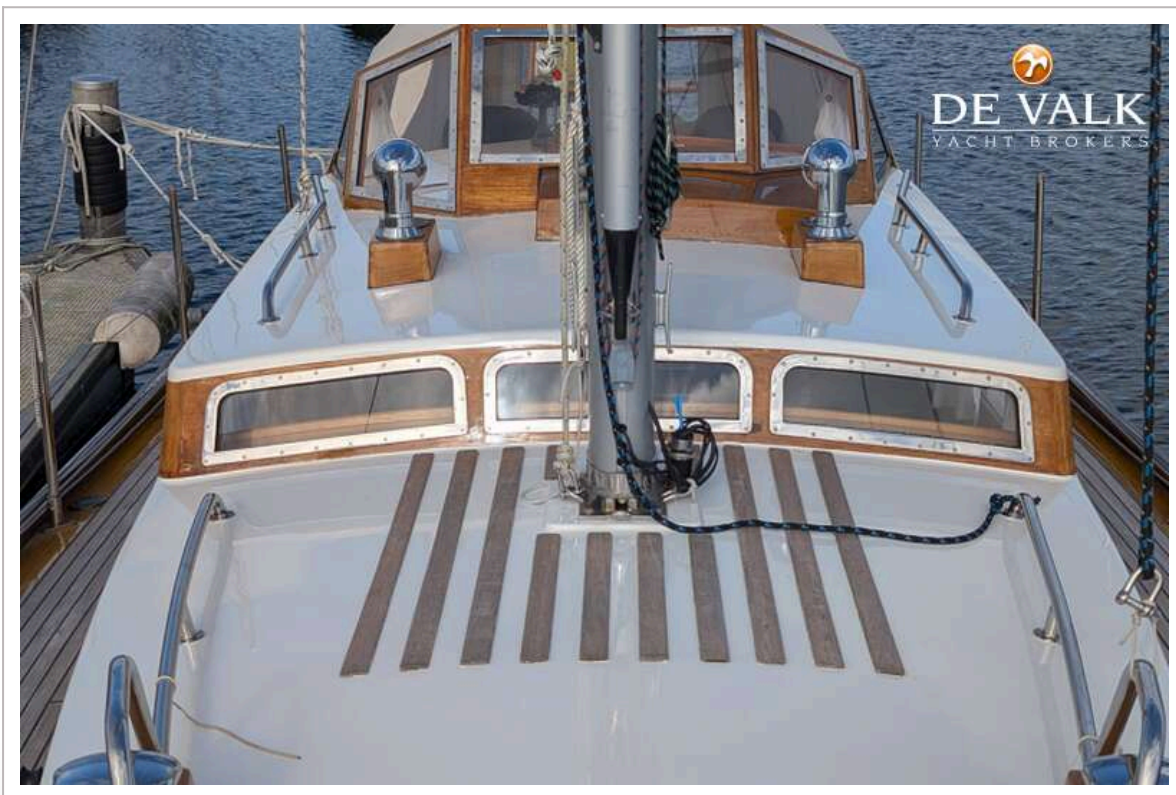
CLASSIC 7 KR CRUISER/RACER



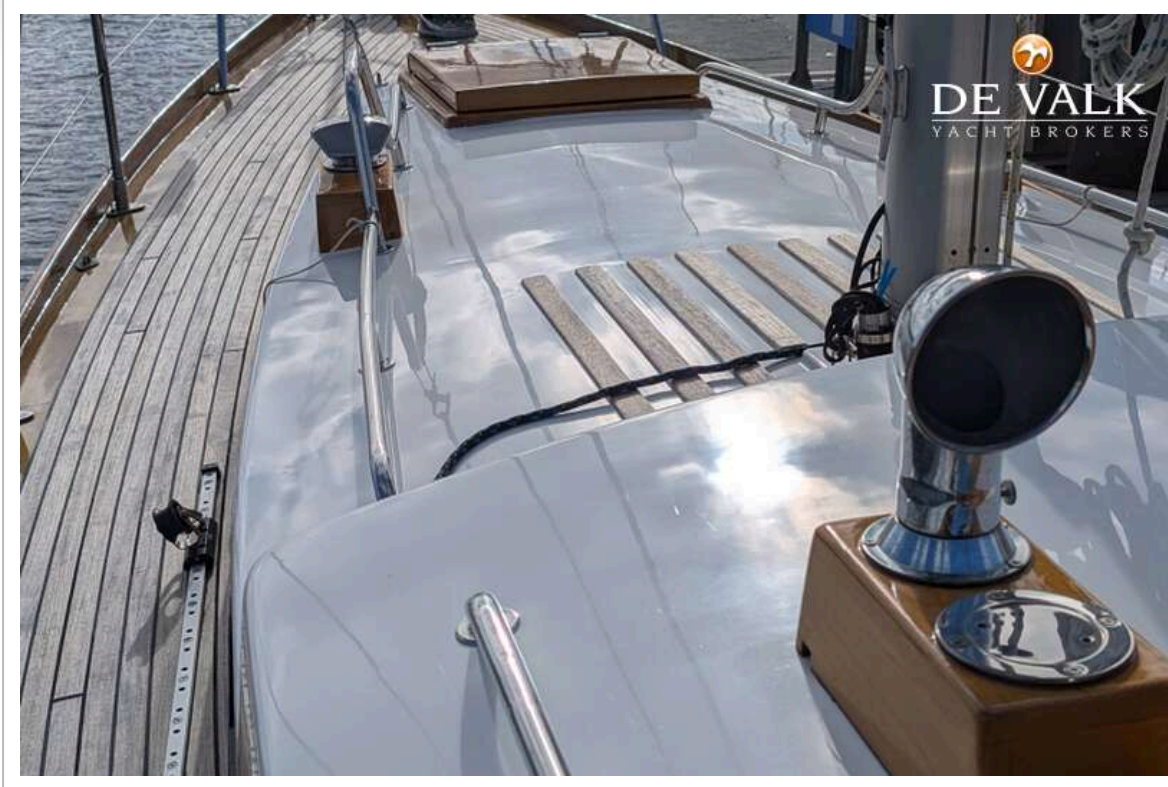
CLASSIC 7 KR CRUISER/RACER



CLASSIC 7 KR CRUISER/RACER



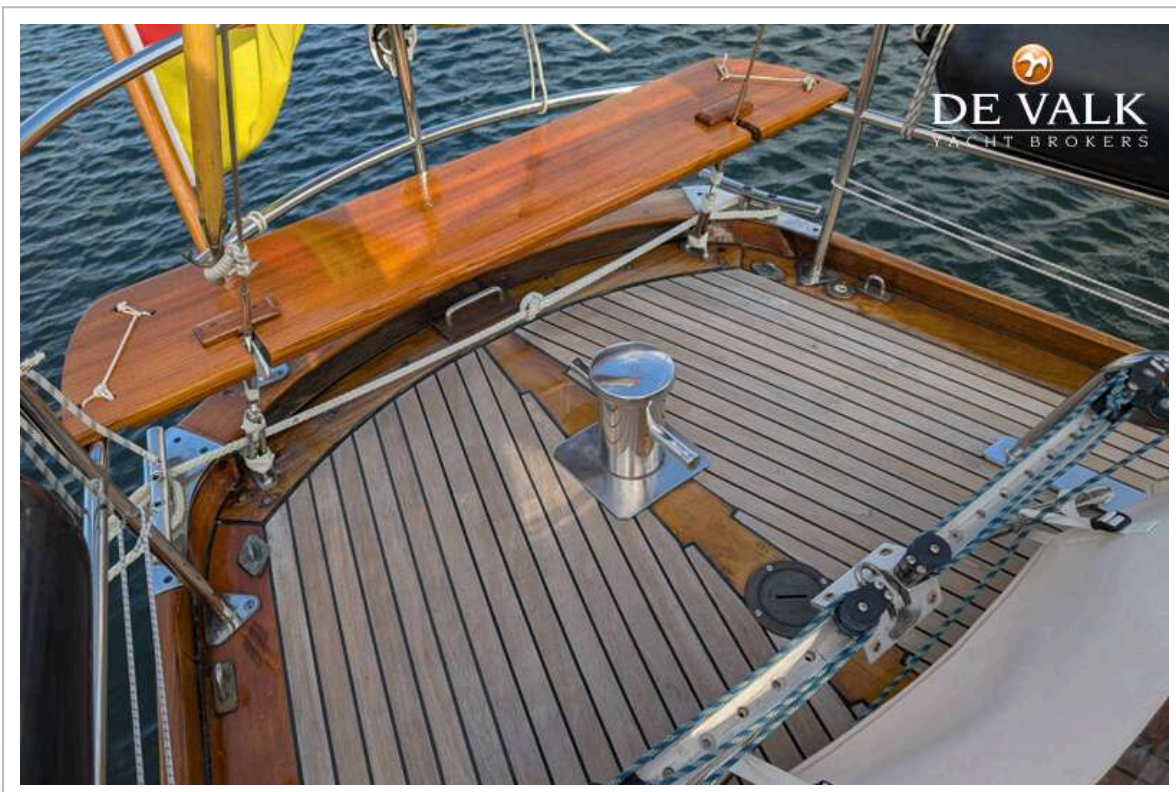
CLASSIC 7 KR CRUISER/RACER



CLASSIC 7 KR CRUISER/RACER



CLASSIC 7 KR CRUISER/RACER



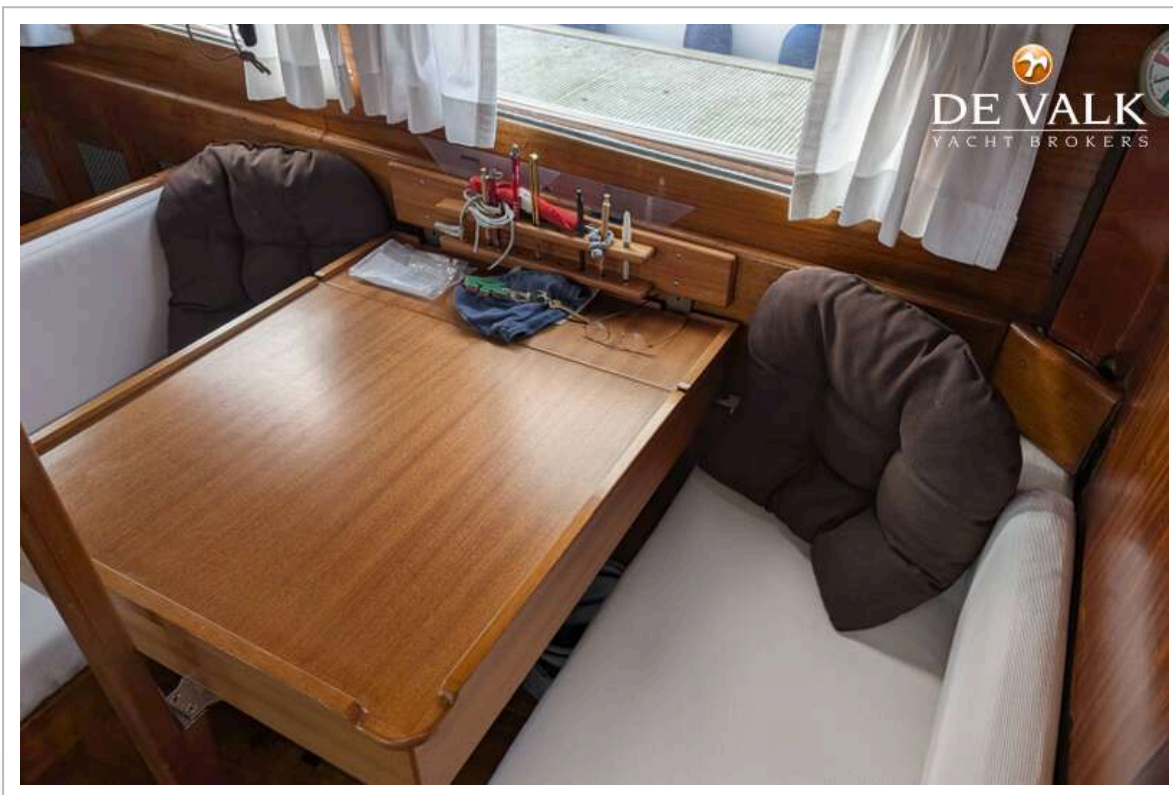
CLASSIC 7 KR CRUISER/RACER



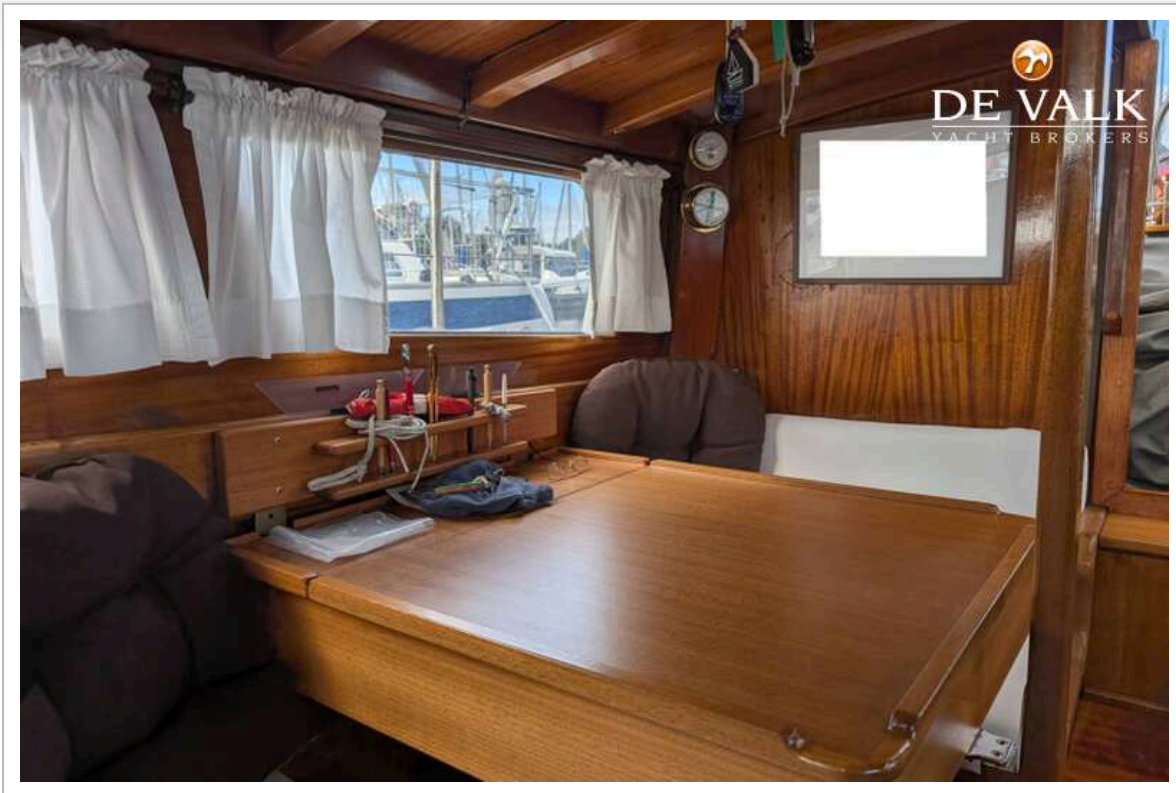
CLASSIC 7 KR CRUISER/RACER



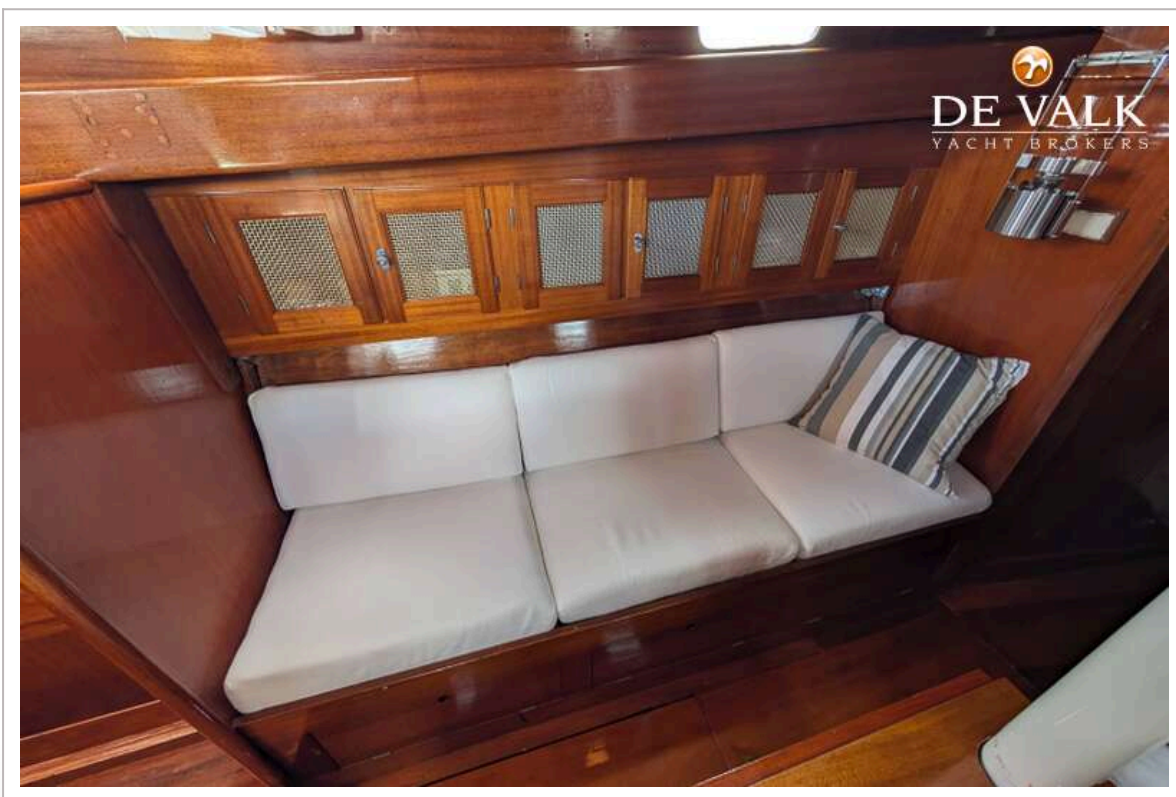
CLASSIC 7 KR CRUISER/RACER



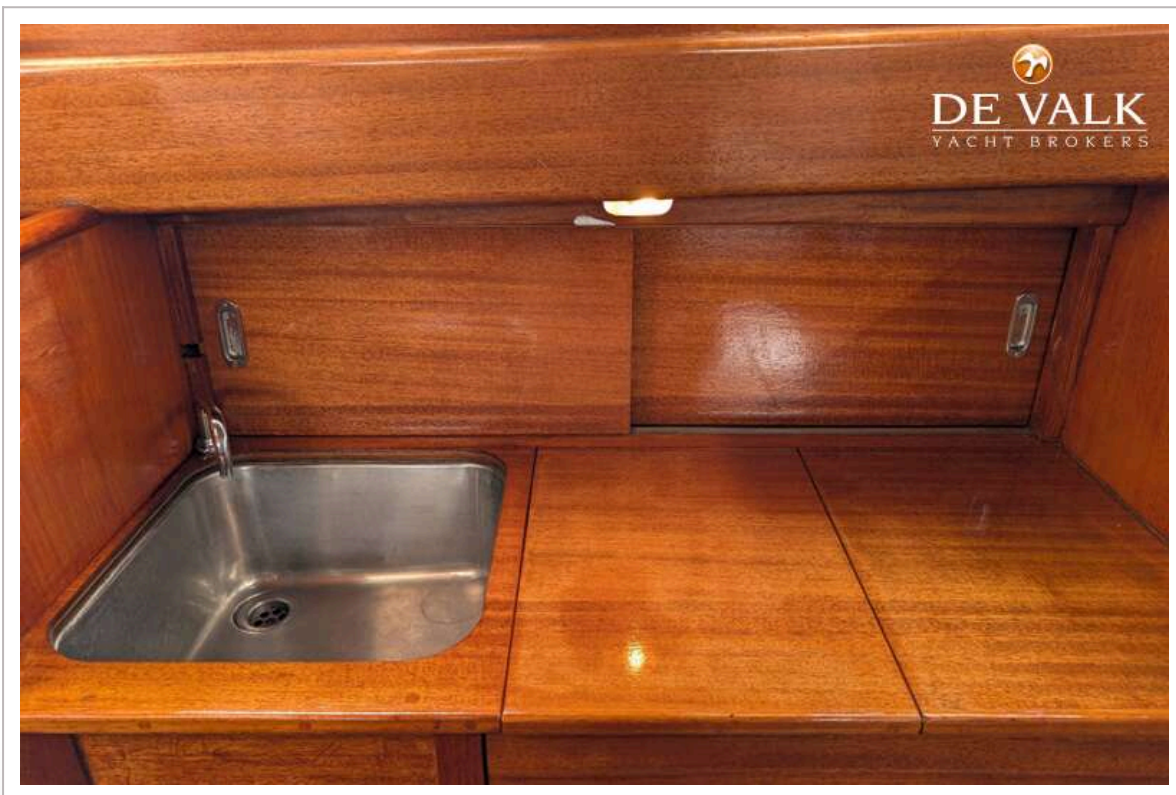
CLASSIC 7 KR CRUISER/RACER



CLASSIC 7 KR CRUISER/RACER



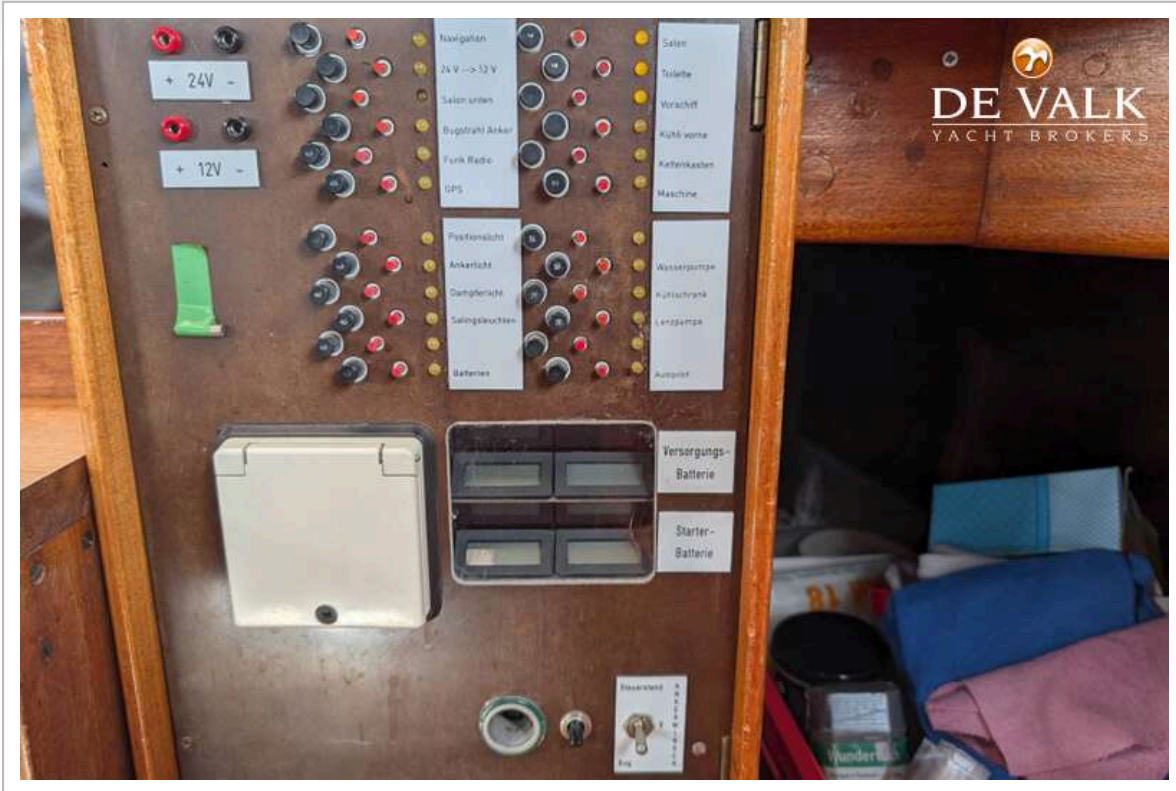
CLASSIC 7 KR CRUISER/RACER



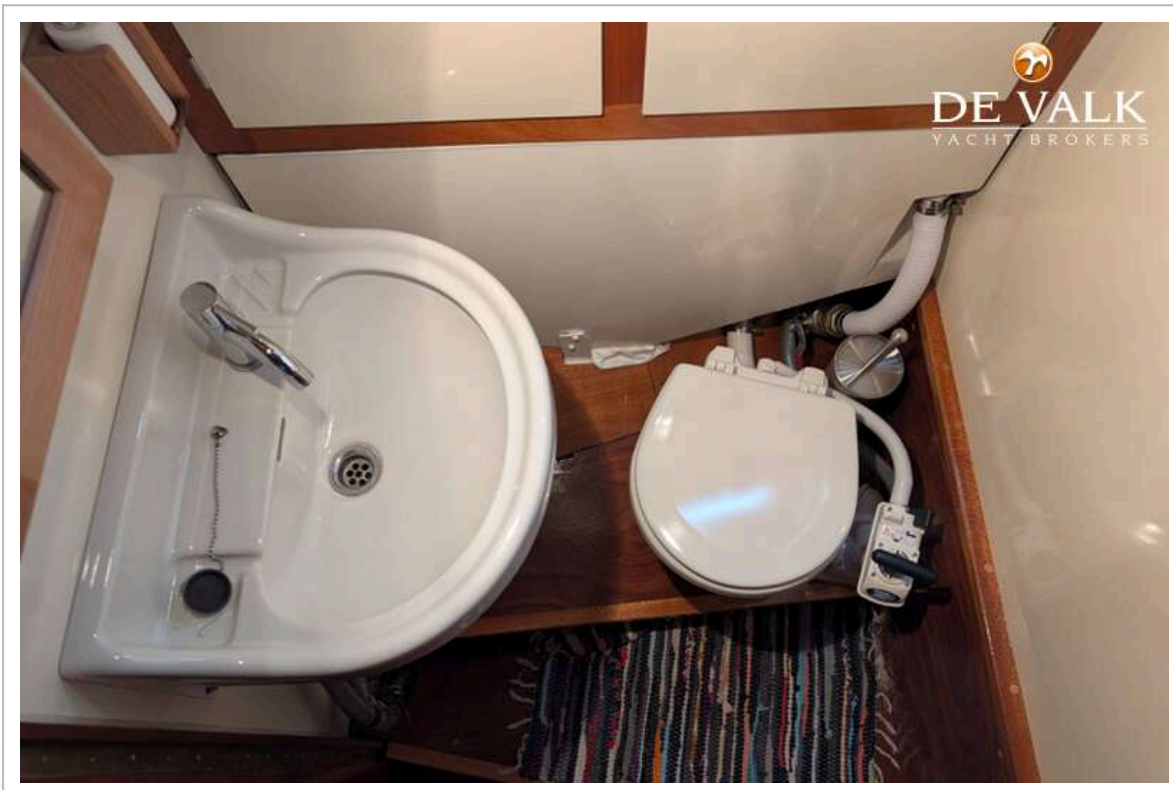
CLASSIC 7 KR CRUISER/RACER



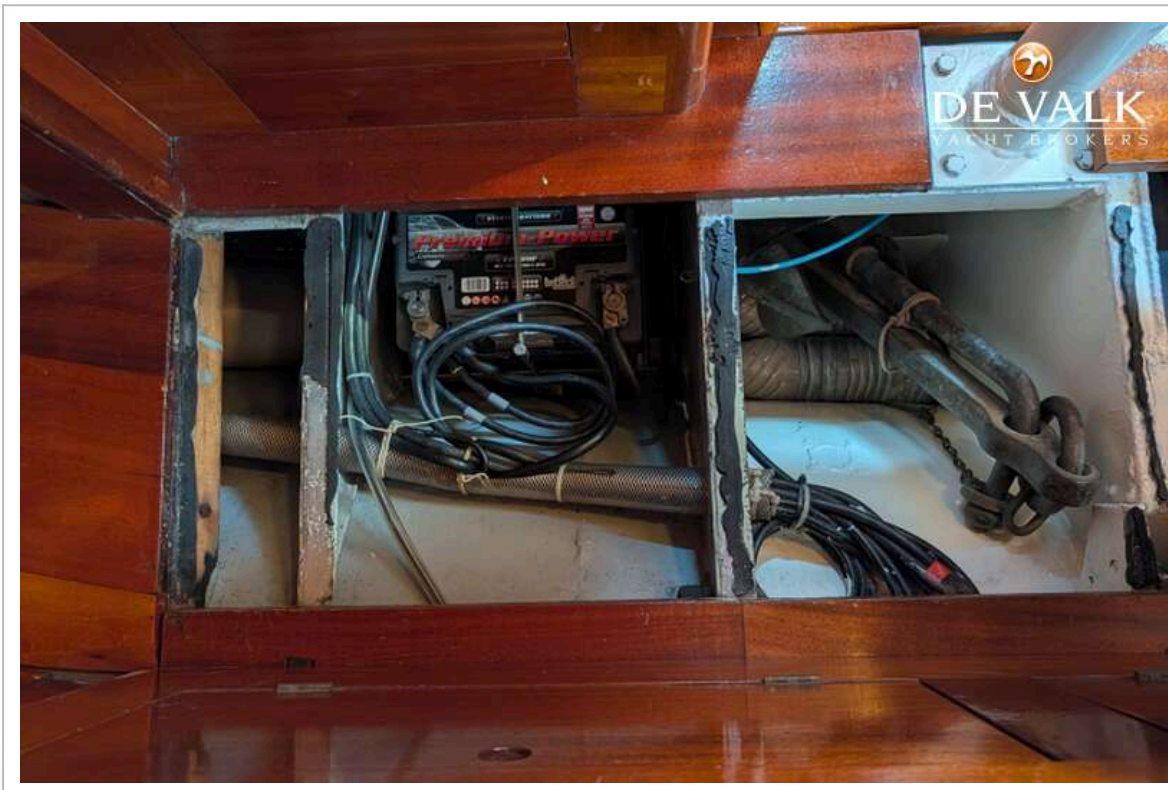
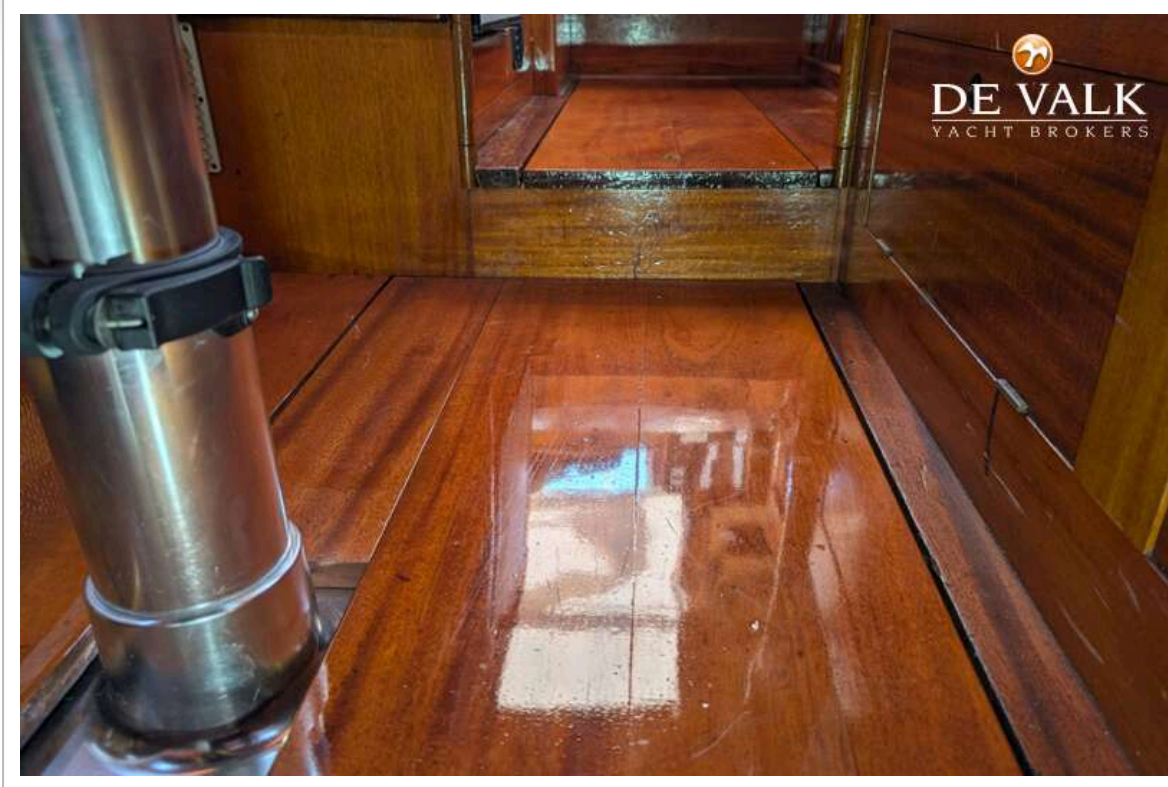
CLASSIC 7 KR CRUISER/RACER

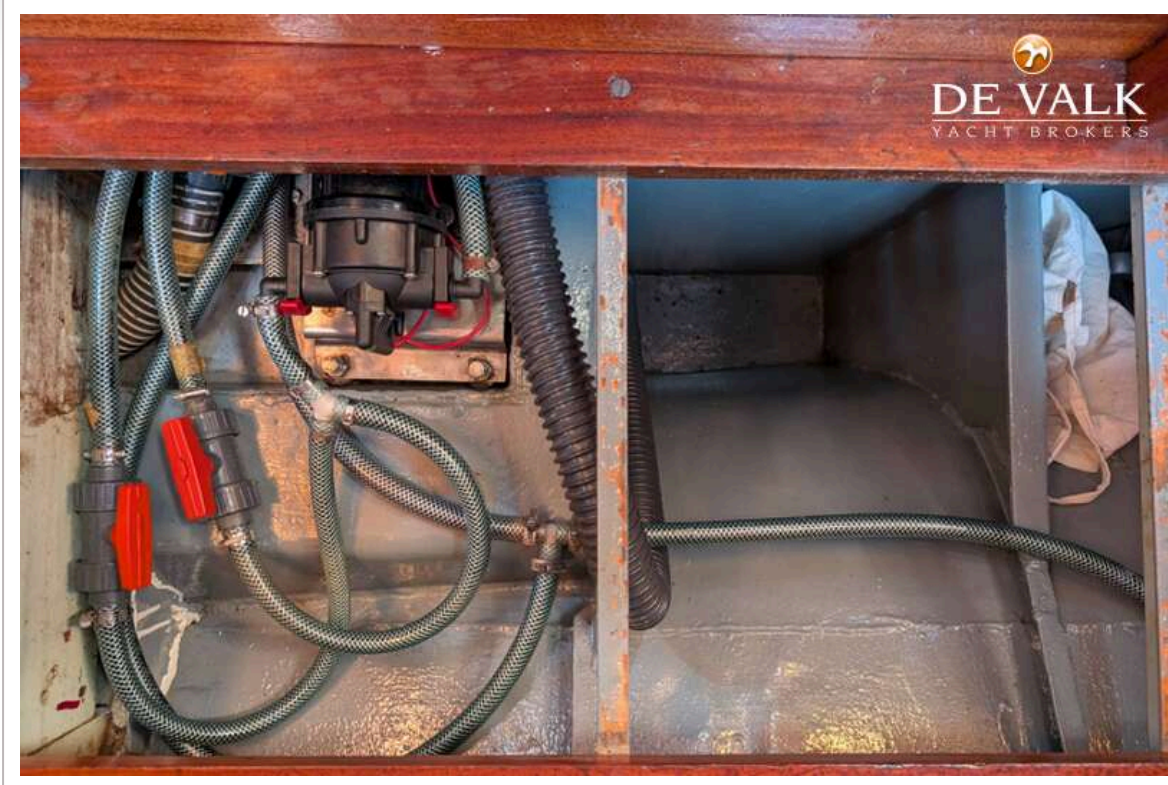


CLASSIC 7 KR CRUISER/RACER

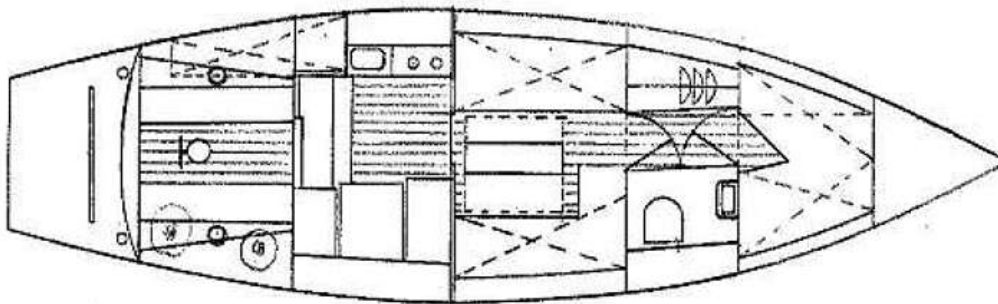


CLASSIC 7 KR CRUISER/RACER





SEGELYACHT "NADIR"



Länge: 11,50m
Breite: 3,05m
Tiefgang: 1,80m
verdrängung: 9,5t

