



DE VALK
YACHT BROKERS



STOREBRO ROYAL CRUISER 34



DE VALK
YACHT BROKERS

STOREBRO ROYAL CRUISER 34

BROKER'S COMMENTS

Very well maintained Storebro 34 Royal Cruiser called "Norman" built in 1983. The "Norman" is a great motor yacht to sail both inland and coastal waters. This Storebro 34 Royal Cruiser 34 is equipped with two strong and economical Volvo Penta diesel engines and a bow thruster. The interior has a new floor, diesel hot air heating, two cabins, etc.... In short, a very spacious classic motor yacht, also for longer stays on board.

Jochem Heijermans

SPECIFICATIONS

Dimensions	10.35 x 3.20 x 0.00 (m)	Builder	Storebro Bruks AB
Built	1983	Cabins	2
Material	GRP	Berths	4
Engine(s)	2 x Volvo Penta TAMD-40B diesel	Hp/Kw	2 x 158.00 (hp), 116.29 (kw)
Asking price	sold (VAT)	Lying	elsewhere / Not at sales office

CONTACT

Sales office	De Valk Sint Annaland B.V.	Telephone	+31 166 601 000
Address	Koelhuisweg 4 4697 RM Sint Annaland NL	E-mail	sintannaland@devalk.nl

DISCLAIMER

These particulars are given in good faith as supplied but cannot be guaranteed.



STOREBRO ROYAL CRUISER 34

GENERAL

Model	STOREBRO ROYAL CRUISER 34
Type	motor yacht
LOA (m)	10,35
Beam (m)	3,20
Air draft (m)	3,20
Headroom (m)	1,90
Year built	1983
Builder	Storebro Bruks AB
Country	Sweden
Designer	J.H. Lindblom/Royal Swedish Navy
Displacement (t)	5,5
Hull material	GRP
Hull colour	off-white
Hull shape	deep-V
Superstructure material	mahogany + GRP
Rubbing strake	stainless steel
Deck material	GRP
Deck finish	teak
Superstructure deck finish	paint
Cockpit deck finish	synthetic teak Quickstep 2023
Window frame	aluminium
Window material	tempered glass
Deckhatch	yes
Mast can be lowered	manual
Fuel tank (litre)	stainless steel 2x 500
Level indicator (fuel tank)	yes
Freshwater tank (litre)	polyethylene 250
Level indicator (freshwater)	Needs to be serviced
Wheel steering	hydraulic



STOREBRO ROYAL CRUISER 34

ACCOMMODATION

Cabins	2
Berths	4
Interior	mahogany
Floor	vinyl Quickstep 2023
Aft deck	yes
Saloon	yes
Headroom saloon (m)	1.90
Sliding roof	manual
Heating	diesel ducted hot air Eberspacher D5L
Opening door to aft deck	yes
Galley	yes
Countertop	wood
Sink	stainless steel
Cooker	induction (2024)
Fridge	yes
Hot water system	220V + engine
Water pressure system	electrical With filter (2025)
Owners cabin	twin single
Wardrobe	hanging and drawers
Bathroom	shared
Toilet	shared
Toilet system	electric (2024)
Wash basin	in the bathroom
Shower	shared
Guest cabin 1	v-bed
Wardrobe	hanging and drawers

MACHINERY

No of engines	2
Make	Volvo Penta



STOREBRO ROYAL CRUISER 34

Type	TAMD-40B
HP	158
kW	116.29
Fuel	diesel
Maximum speed (kn)	15
Cruising speed (kn)	9
Engine cooling system	freshwater heat exchanger
Drive	shaft
Engine controls	bowden cable
Gearbox	hydraulic
Bowthruster	electric
Exhaust	watercooled
Shaft lubrication	water
Electric bilge pump	yes
Electrical installation	12V/24V/220V
Start battery	(2023)
Service battery	(2023)
Bowthruster battery	(2024)
Battery charger	Victron Smart Charger 12V/50Ah (2023)
Inverter	Not connected
Shorepower	with cable
Trimtabs	yes

NAVIGATION

Compass	yes
Electric compass	Autohelm ST7000
Depth sounder	Autohelm
Autopilot	Autohelm ST7000
Rudder angle indicator	Autohelm ST7000
Radar	Needs to be serviced
Plotter	Vision 07 Color



STOREBRO ROYAL CRUISER 34



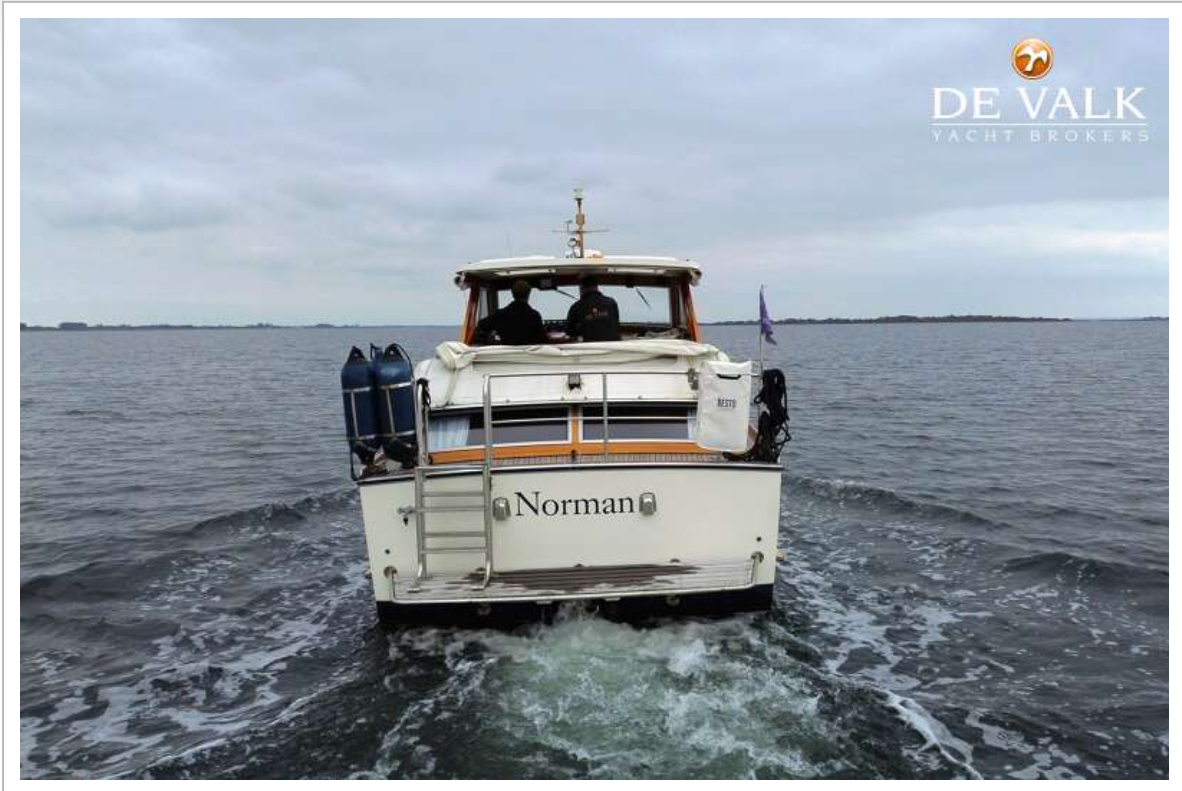
STOREBRO ROYAL CRUISER 34



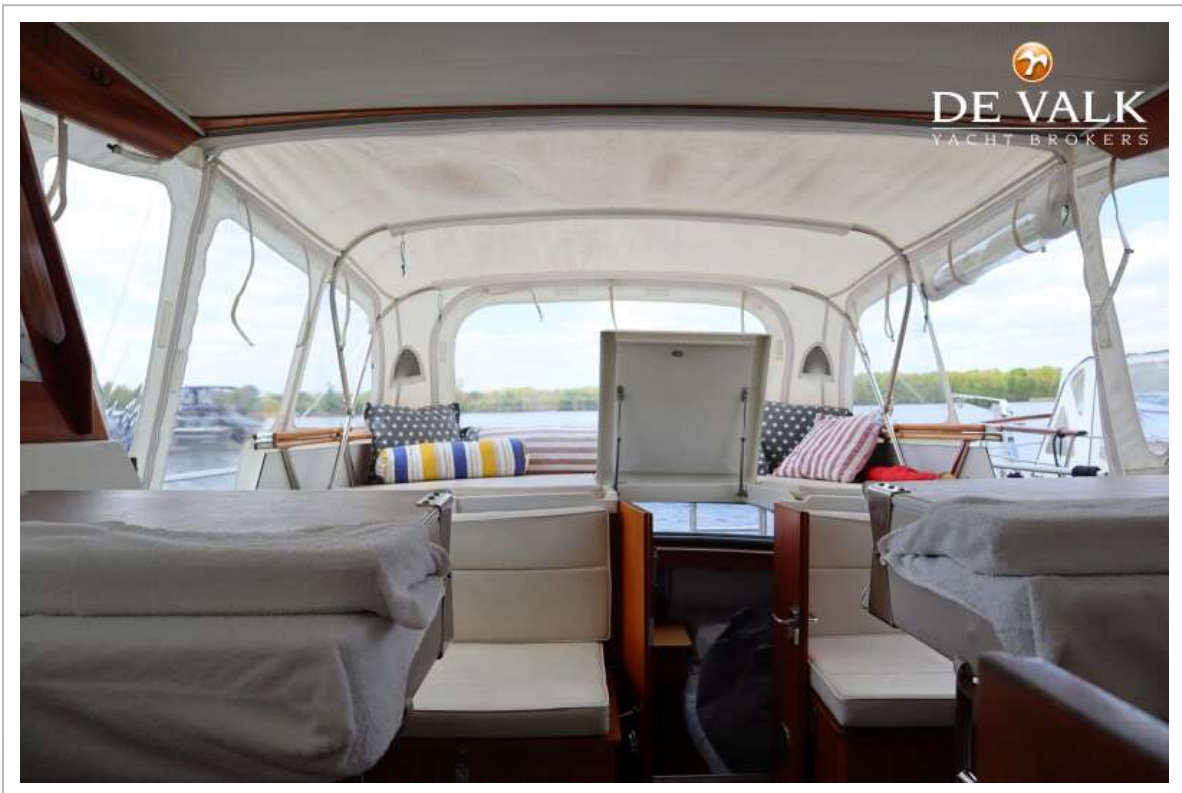
STOREBRO ROYAL CRUISER 34



STOREBRO ROYAL CRUISER 34



STOREBRO ROYAL CRUISER 34



STOREBRO ROYAL CRUISER 34



STOREBRO ROYAL CRUISER 34



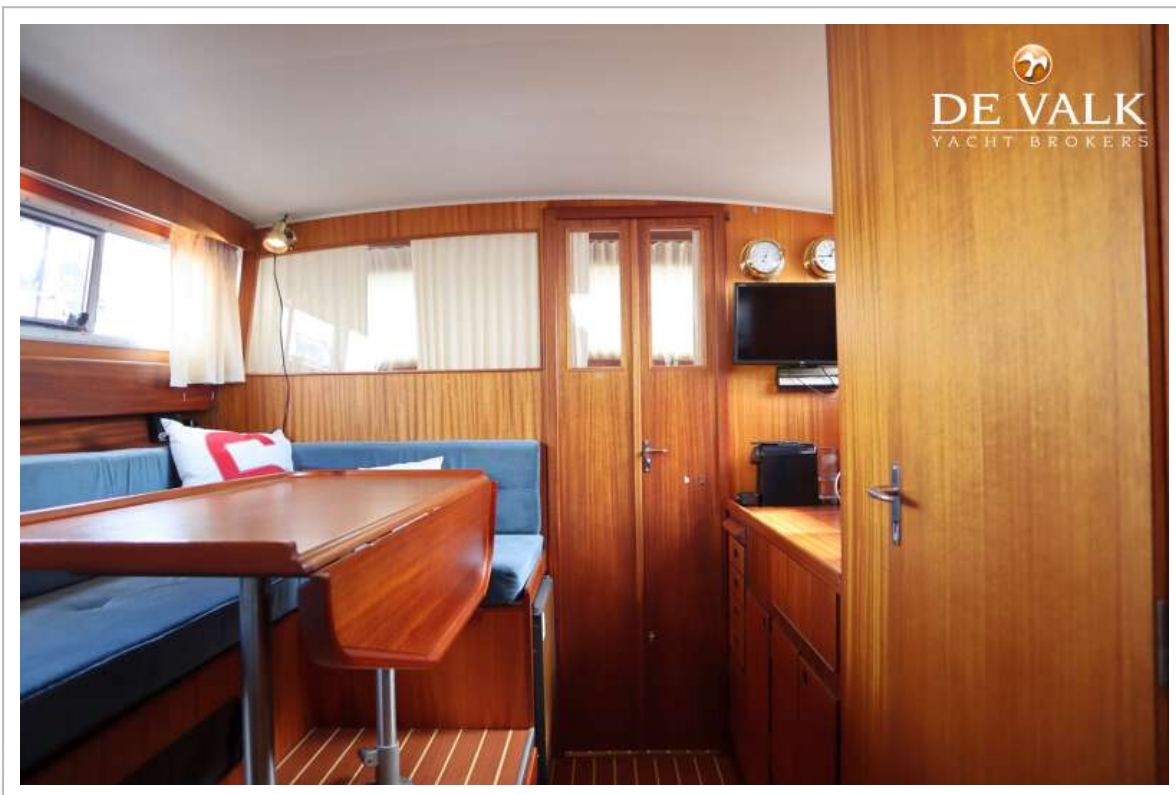
STOREBRO ROYAL CRUISER 34



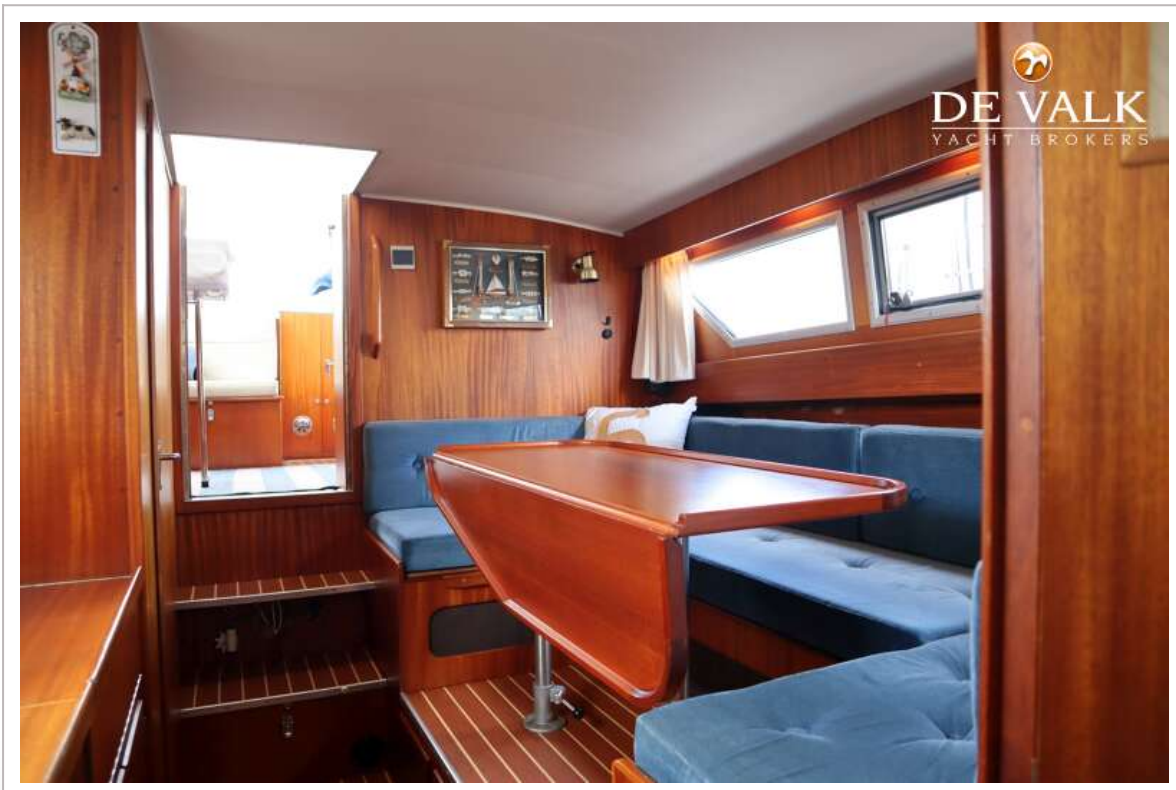
STOREBRO ROYAL CRUISER 34



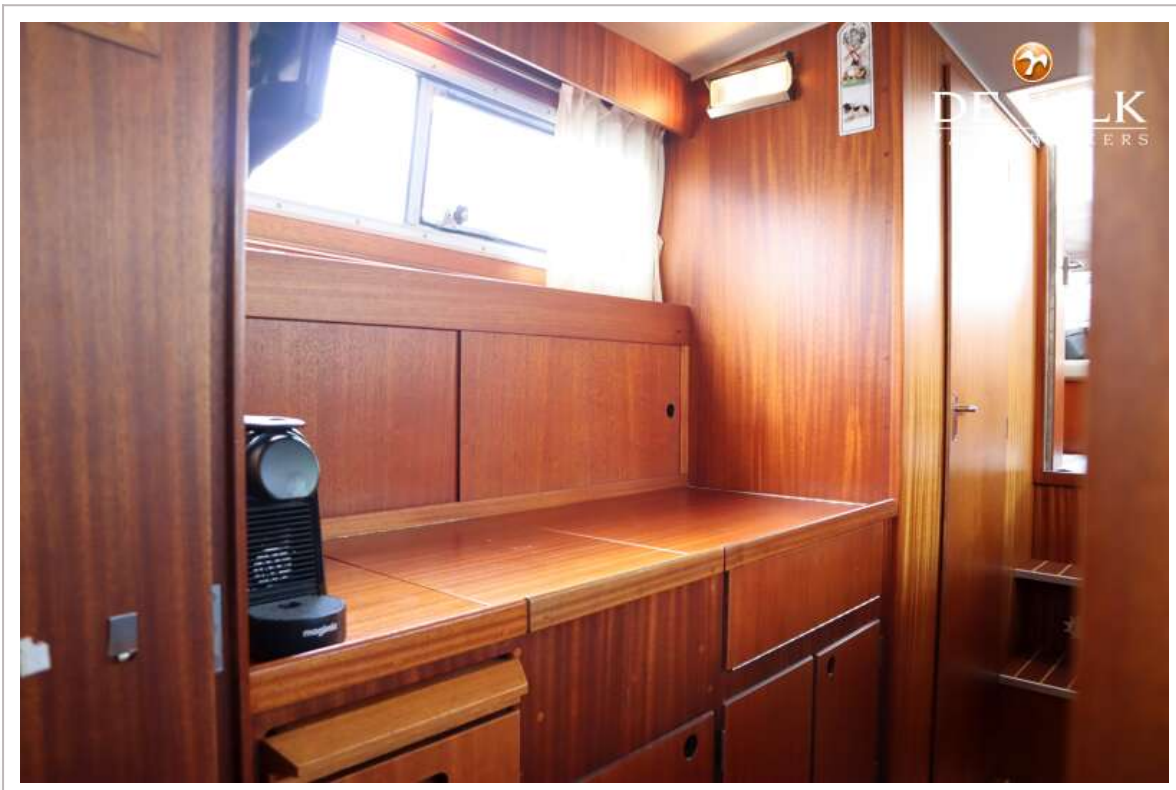
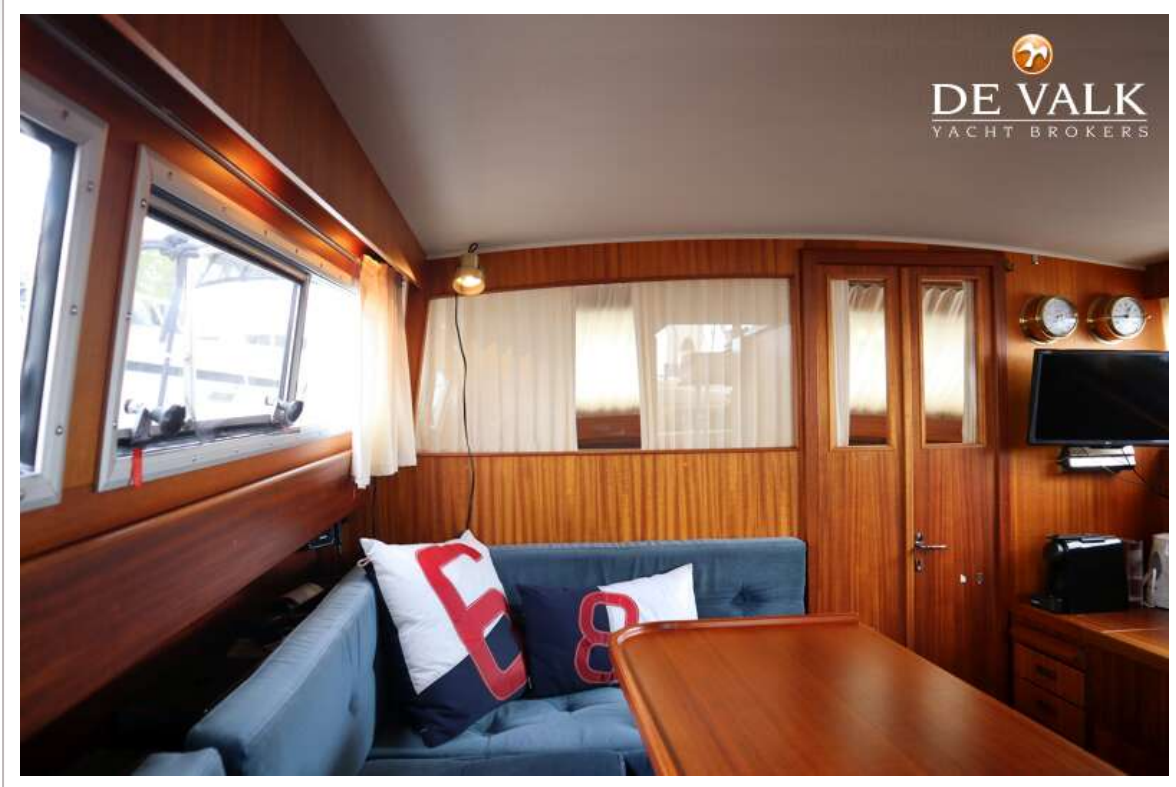
STOREBRO ROYAL CRUISER 34



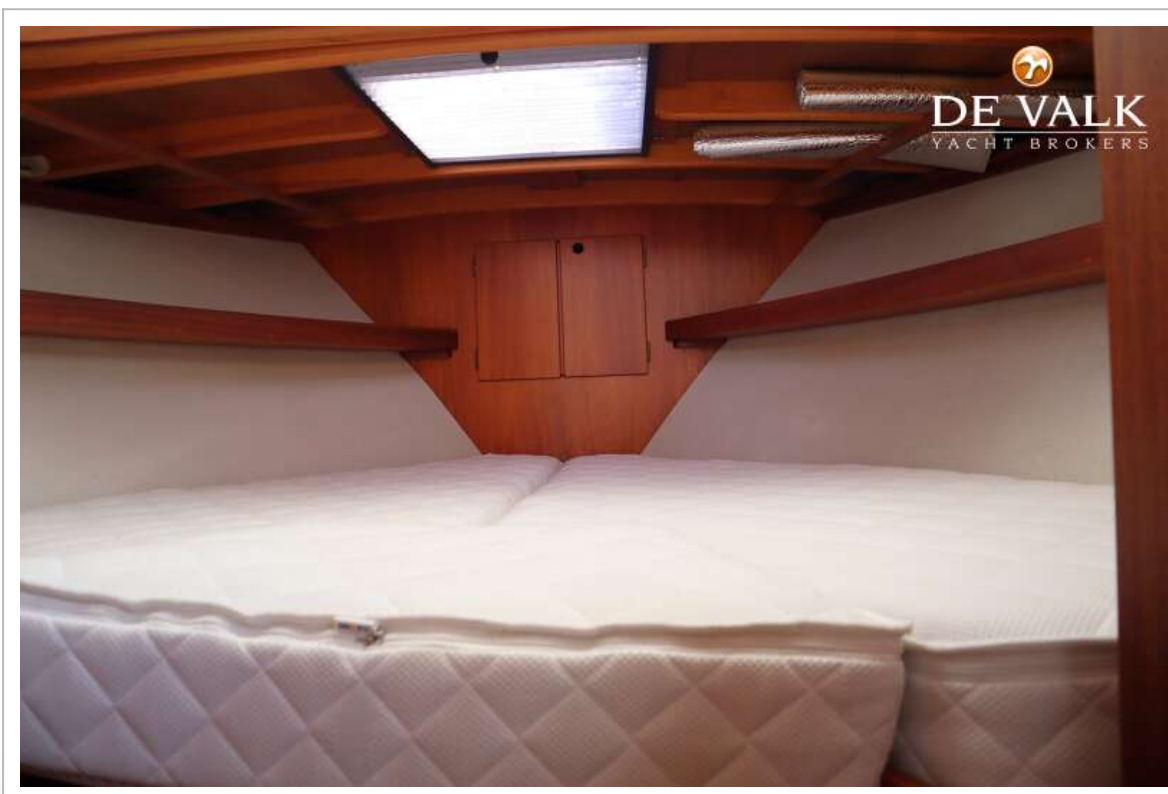
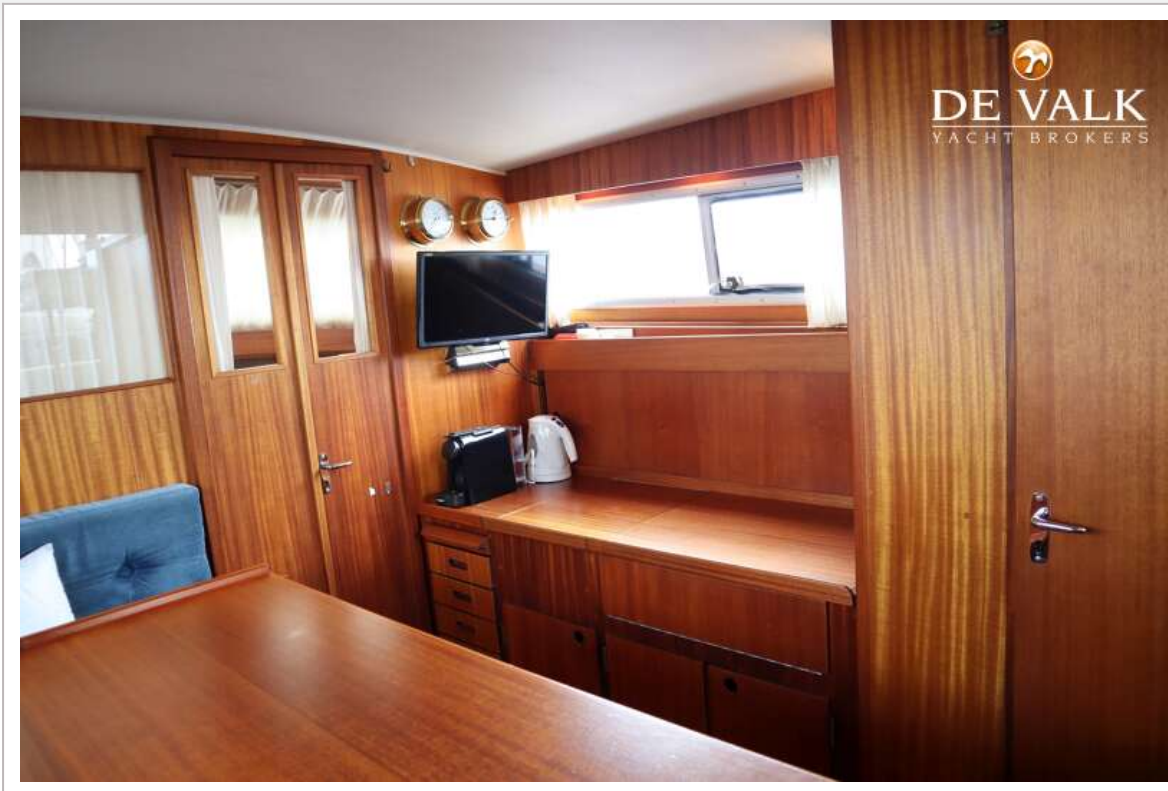
STOREBRO ROYAL CRUISER 34



STOREBRO ROYAL CRUISER 34



STOREBRO ROYAL CRUISER 34



STOREBRO ROYAL CRUISER 34



STOREBRO ROYAL CRUISER 34



STOREBRO ROYAL CRUISER 34



STOREBRO ROYAL CRUISER 34



STOREBRO ROYAL CRUISER 34



STOREBRO ROYAL CRUISER 34

