



RHEA MARINE 750

BROKER'S COMMENTS

Rhea 750 a little ship with a lot of possibilities and easy to handle! With her bathing platform she has a length of approx 8.00m. Single Volvo Penta D3-220, 220 HP diesel engine, Side-power bowthruster. V- berth in front, chemical toilet, saloon, helm position and galley. Large cockpit with transom door to her bathing platform. Viewing possible by appointment in The Netherlands.

Arne Doodeman

SPECIFICATIONS

Dimensions	8.00 x 2.80 x 0.75 (m)	Builder	Rhea Marine
Built	2013	Cabins	1
Material	GRP	Berths	2
Engine(s)	1 x Volvo Penta D3-220 diesel	Hp/Kw	220.00 (hp), 161.92 (kw)
Asking price	€ 82.500 (VAT Paid)	Lying	contact Monnickendam

CONTACT

Sales office	De Valk Monnickendam B.V.	Telephone	+31 (0)299 65 63 50
Address	Hoogedijk 6 1145 PM Katwoude NL	E-mail	monnickendam@devalk.nl

DISCLAIMER

These particulars are given in good faith as supplied but cannot be guaranteed.



GENERAL

Model	RHEA MARINE 750
Type	motor yacht
LOA (m)	8,00
LWL (m)	6,85
Beam (m)	2,80
Draft (m)	0,75
Year built	2013
Builder	Rhea Marine
Country	France
Displacement (t)	4
CE norm	B
Hull material	GRP
Hull colour	blue Need to be polished
Hull shape	deep-V
Superstructure material	GRP
Rubbing strake	wood Teak
Deck material	GRP
Deck finish	non-skid moulded in
Cockpit deck finish	non-skid moulded in
Antifouling (year)	2025
Window frame	aluminium
Window material	tempered glass
Fuel tank (litre)	Approx. 300 litre
Level indicator (fuel tank)	Volvo Penta
Freshwater tank (litre)	Approx. 55 litre
Wheel steering	hydraulic
Inside helm position	yes
Tiller	yes

ACCOMMODATION



Cabins	1
Berths	2
Layout	V-berth in front, saloon with helm postion. Sliding door to the side and to the cockpit.
Floor	anti-slip
Open cockpit	yes
Heating	Hot air from the engine is used via a Eberspacher exchanger
Dinette	yes
Sliding door to cockpit	yes
Sink	stainless steel
Cooker	calor gas Can single burner
Fridge	Waeco
Owners cabin	v-bed
Toilet	yes
Toilet system	chemical Toilet with tank.

MACHINERY

No of engines	1
Make	Volvo Penta
Type	D3-220
HP	220
kW	161.92
Fuel	diesel
Engine hours	406
Engine cooling system	freshwater heat exchanger
Drive	shaft
Engine controls	electrical Volvo Penta engine control
Gearbox	Volvo Penta HS45AE-C
Bowthruster	electric Side-Power
Propeller type	fixed
Propeller blades	3 bladed propeller



Propeller shaft material	stainless steel
Shaft lubrication	water
Manual bilge pump	yes
Electric bilge pump	yes
Start battery	110 ah (12-2024)
Service battery	110 ah (12-2024)
Battery charger	Quick
Inverter	Navicom (working not known)
Shorepower	yes

NAVIGATION

Compass	Plastimo Offshore 75
VHF	Navicom RT-550AIS DSC marine radio
Autopilot	Garmin GHC 10
Rudder angle indicator	VDO
Radar	Garmin Radar on a Scanstrut mast
Radar/GPS/plotter	Garmin GPSmap 5008

EQUIPMENT

Bathing platform	yes
Boarding ladder	stainless steel
Transom door	yes
Deck shower	yes
Anchor	Stainless steel anchor MAXset 6
Anchor chain	Galvanized chain
Windlass	electrical Quick
Deck wash	yes
Sea railing	stainless steel
Grab rail (superstructure)	teak
Life raft	valise (or bag) Plastimo Coastal 4 (Need service)
Life raft (pers)	4 person



Wiper	2 x panthograph wipers
Horn	yes
Fenders	yes
Mooring lines	yes



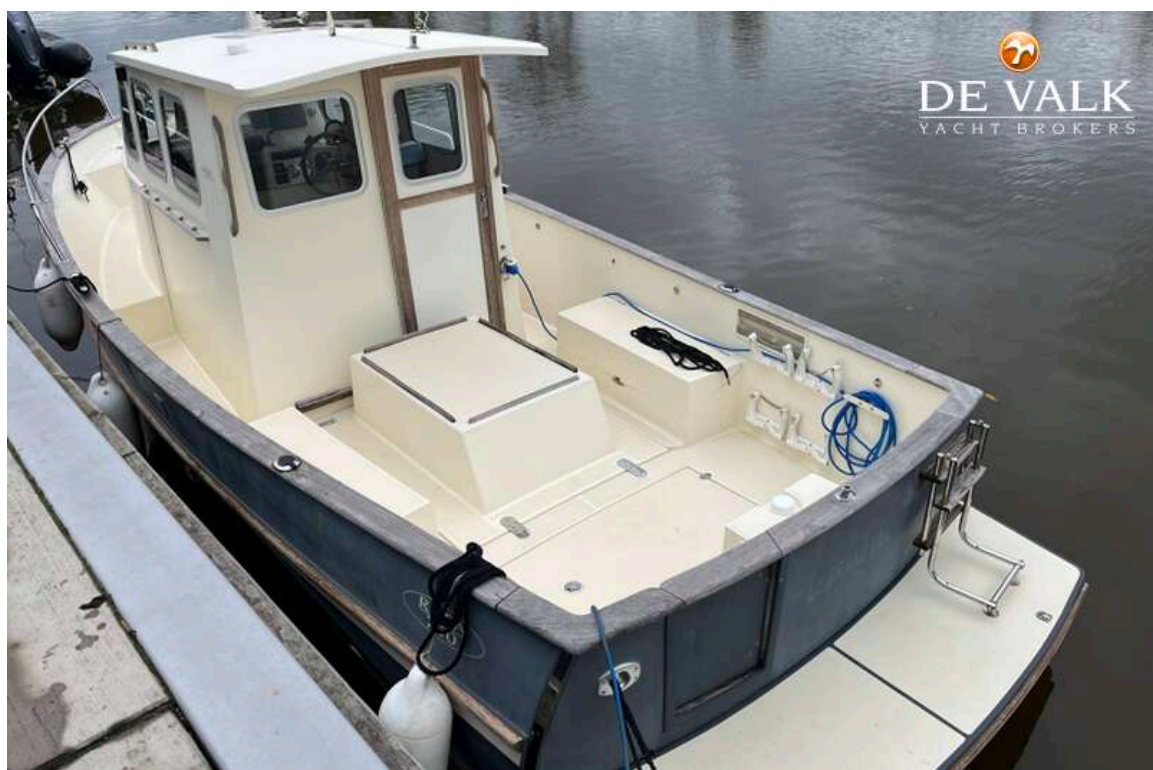
RHEA MARINE 750



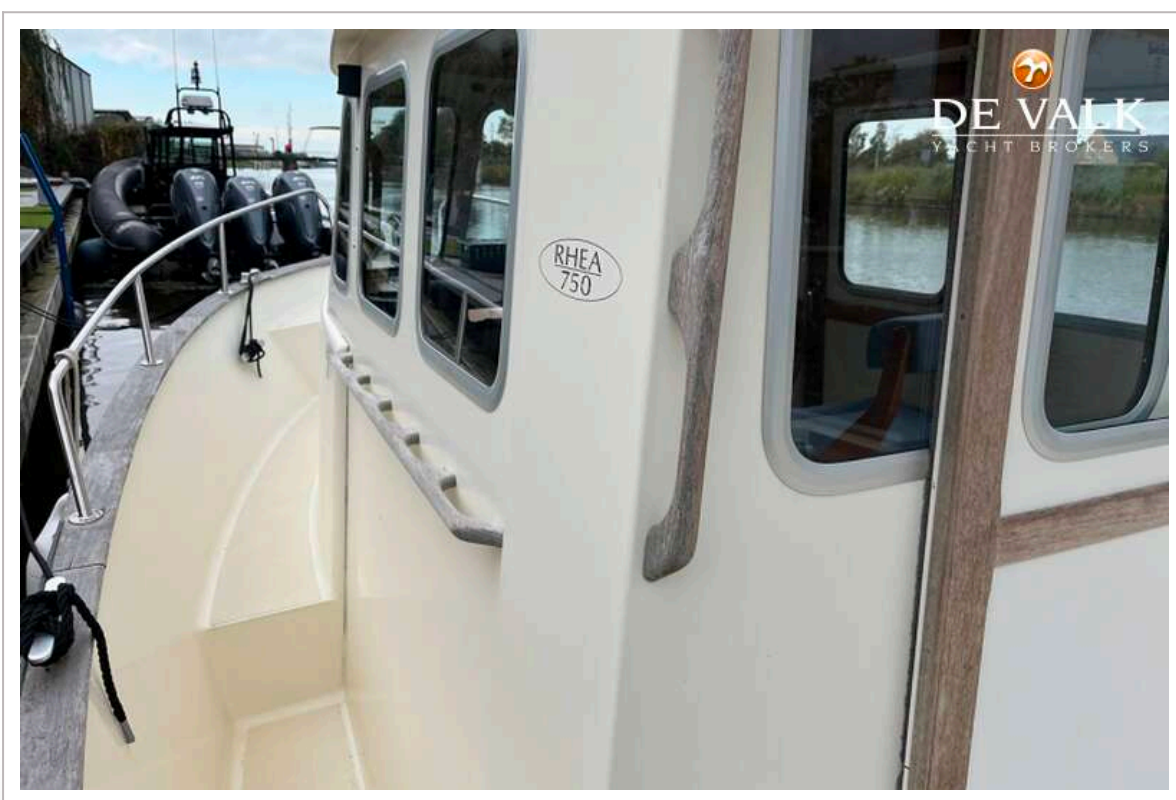
RHEA MARINE 750



RHEA MARINE 750

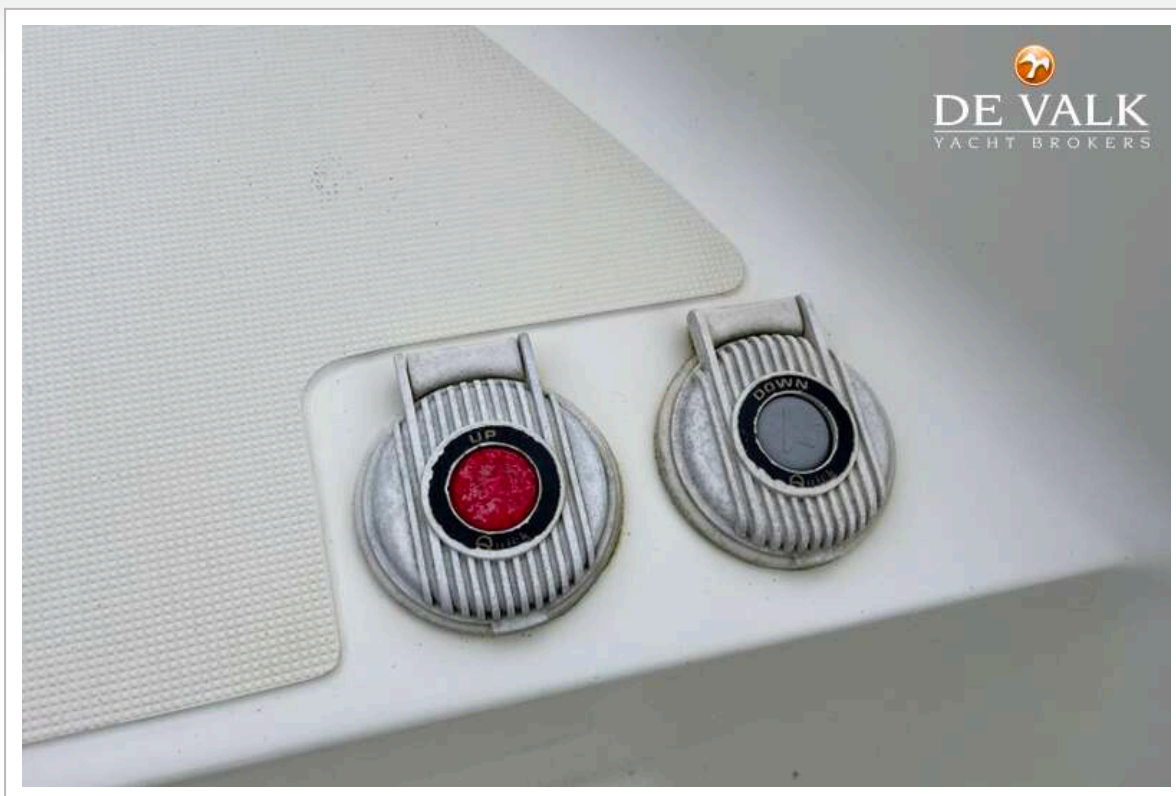


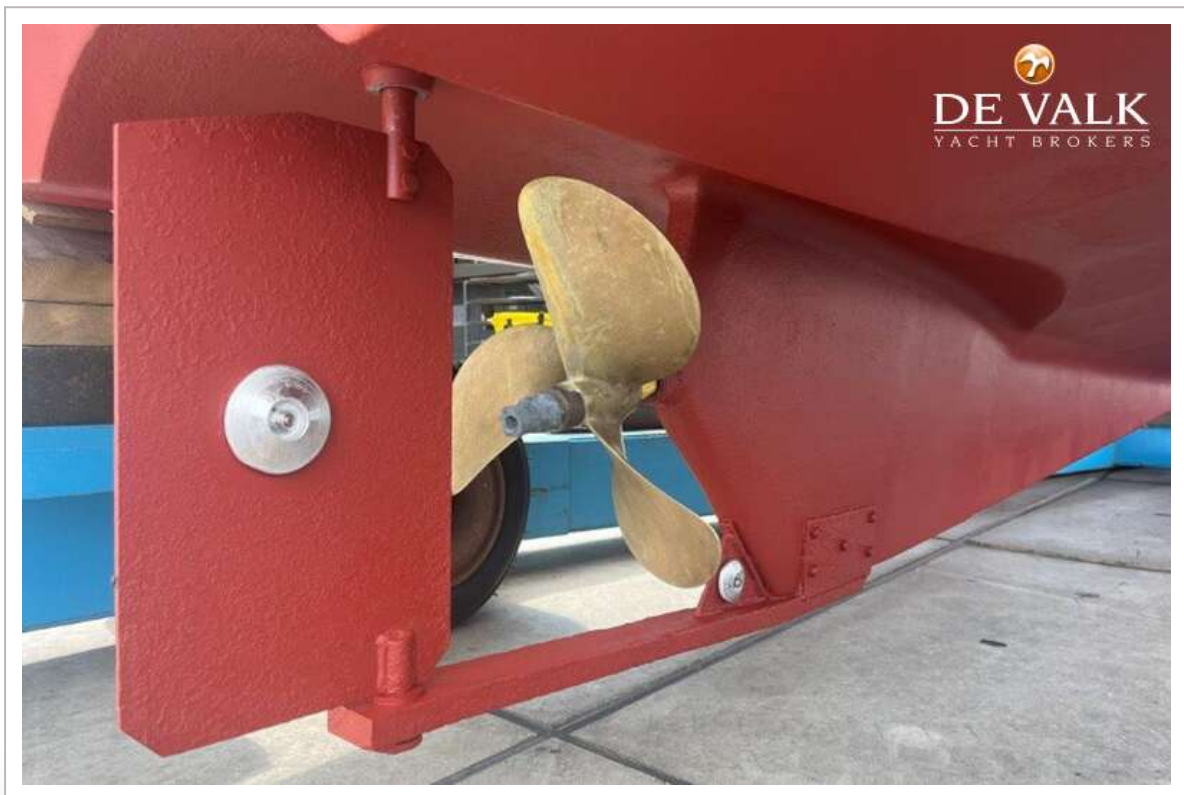
RHEA MARINE 750



RHEA MARINE 750



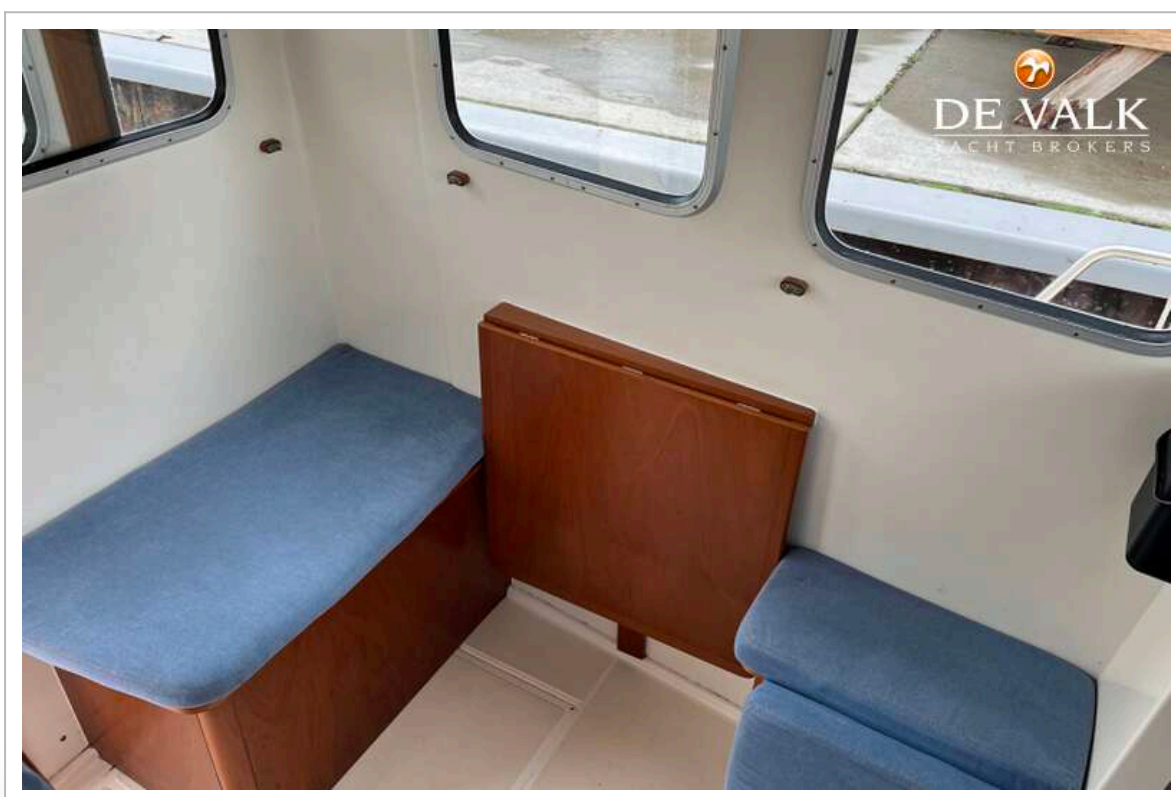




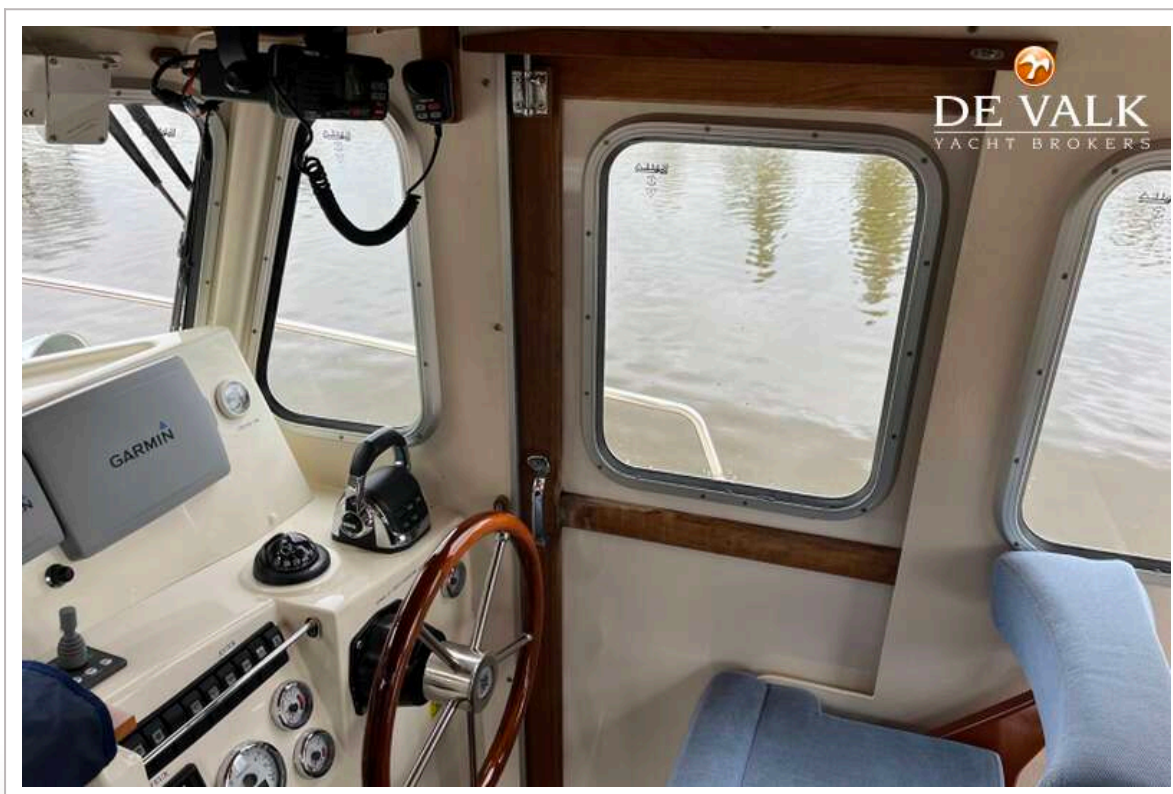
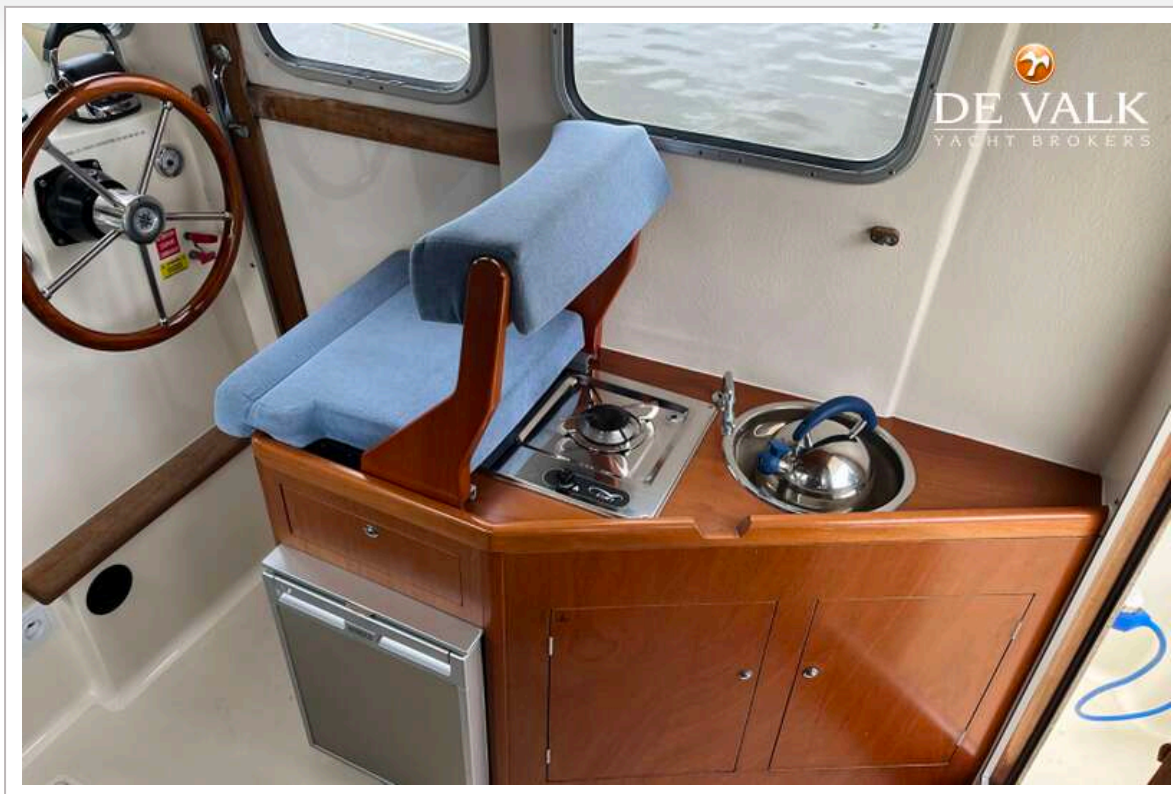
RHEA MARINE 750



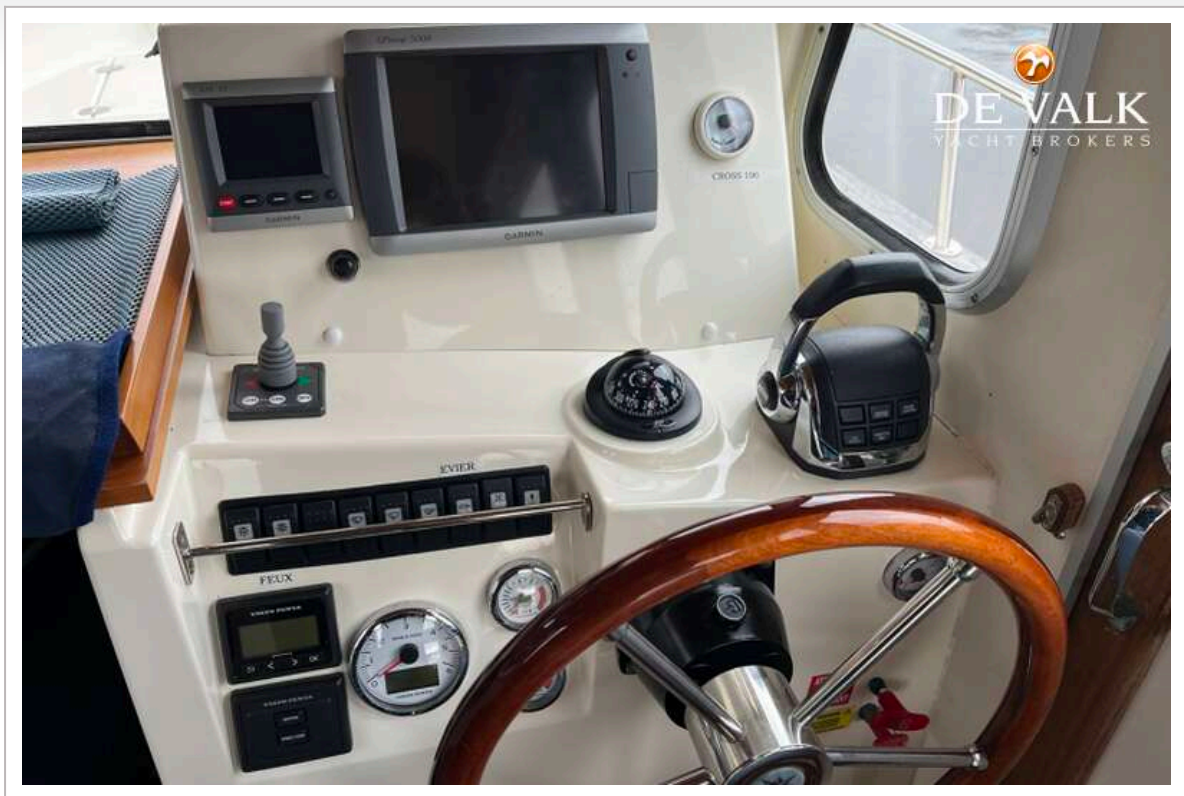
RHEA MARINE 750



RHEA MARINE 750



RHEA MARINE 750



RHEA MARINE 750



RHEA MARINE 750



RHEA MARINE 750



