



DE VALK
YACHT BROKERS



BOARNCRUISER 40 CLASSIC LINE



DE VALK
YACHT BROKERS

BOARNCRUISER 40 CLASSIC LINE

BROKER'S COMMENTS

This Boarncruiser Classic Line is recently overhauled and made ready to, completely equipped for long journeys and live aboard. The yacht is very well maintained and appears like new. With its bow- and stern thrusters very easy to operate, even single handed. Large aft deck with helmsman chair, comfortable bench with plenty of storage space underneath. Spacious, comfortable master cabin. Many options and upgrades over standard specification. The bright saloon with its large, tinted windows provides a magnificent, all around view. Can be inspected in our salesmarina in Sneek.

Pieter Bosma

SPECIFICATIONS

Dimensions	12.40 x 4.35 x 1.10 (m)	Builder	De Boarnstream Irnsum
Built	2001	Cabins	2
Material	Steel	Berths	4
Engine(s)	1 x Perkins M135 diesel	Hp/Kw	135.00 (hp), 99.36 (kw)
Asking price	€ 219.000 (VAT Paid)	Lying	at sales office

CONTACT

Sales office	De Valk Sneek	Telephone	+31 (0)515 42 80 30
Address	Zwolsmanweg 7 8606 KC Sneek NL	E-mail	sneek@devalk.nl

DISCLAIMER

These particulars are given in good faith as supplied but cannot be guaranteed.



BOARNCRUISER 40 CLASSIC LINE

GENERAL

Model	BOARNCRUISER 40 CLASSIC LINE
Type	motor yacht
LOA (m)	12,40
Beam (m)	4,35
Draft (m)	1,10
Air draft (m)	2,60
Year built	2001
Builder	De Boarnstream Irnsum
Country	The Netherlands
Designer	Theo Werner
Displacement (t)	14
CE norm	B
Hull material	steel
Hull colour	grey
Hull thickness (mm)	10-6-5-4 mm
Hull shape	multi hard chine
Keel type	long keel
Superstructure material	GRP
Rubbing strake	fender rope
Deck material	steel
Deck finish	teak
Superstructure deck finish	paint
Antifouling (year)	2024
Dorades	yes
Window material	double glazing
Deckhatch	yes
Portholes	aluminium
Mast can be lowered	electric Electric motor replaced 2024
Fuel tank (litre)	800 Ltr
Level indicator (fuel tank)	Wamo



BOARNCRUISER 40 CLASSIC LINE

Freshwater tank (litre)	600 Ltr
Level indicator (freshwater)	Wamo
Blackwater tank (litre)	stainless steel 250 Ltr hoses replaced 2024
Level indicator (blackwater)	Wamo
Blackwater tank extraction	deck extraction + pump
Wheel steering	hydraulic
Inside helm position	yes
Outside helm position	yes
More info on paintwork	The hull has been repainted 2024
Extra info	Antifouling 2025

ACCOMMODATION

Cabins	2
Berths	4
Interior	teak
Floor	vinyl
Aft deck	yes
Deck saloon	yes
Saloon	yes
Headroom saloon (m)	1.95 m.
Sliding roof	manual Large hatch
Heating	diesel ducted hot air Webasto Airtop Evo55 (2023)
Aft Cabin	yes
Dinette	yes
Opening door to cockpit	yes
Opening door to aft deck	Teak
Galley	yes
Countertop	plastic
Sink	stainless steel Double
Cooker	ceramic Hermiluc 3 burber (2024)
Microwave	yes



BOARNCRUISER 40 CLASSIC LINE

Microwave/oven combi	Etna
Fridge	With Freezing compartment
Hot water system	220V + engine Boiler
Water pressure system	electrical
Owners cabin	French bed
Bed length (m)	2.10 m
Wardrobe	hanging and shelves
Bathroom	en suite
Toilet	en suite
Toilet system	electric Tecma
Wash basin	in the bathroom
Shower	en suite
Guest cabin 1	v-bed
Bed length (m)	2.00 m.
Wardrobe	hanging and shelves
Toilet	en suite Tecma 2024
Toilet system	electric
Wash basin	in the bathroom
Washing machine/dryer combi	Hoover 7Kg (2024)
Extra info	flyscreens
Extra info	new upholstery and curtains 2024

MACHINERY

No of engines	1
Make	Perkins
Type	M135
HP	135
kW	99.36
Fuel	diesel
Year installed	2001
Maximum speed (kn)	9



BOARNCRUISER 40 CLASSIC LINE

Cruising speed (kn)	7
Consumption (l/hr)	4
Engine hours	2172
Engine cooling system	freshwater heat exchanger
Drive	shaft
Shaft seal	Volvo Seal replaced nov. 2024
Engine controls	electrical
Gearbox	hydraulic ZF HSW 450 A2
Bowthruster	electric Maxpower CT 100 replaced (2017)
Sternthruster	electric Maxpower CT100 replaced (2023)
Exhaust	watercooled Exhaust hose replaced 2024
Thrust bearing	yes
Propeller type	fixed
Propeller blades	4
Propeller shaft material	stainless steel
Shaft lubrication	water
Electric bilge pump	yes
Electrical installation	12 / 240
Generator	wet exhaust Fisher Panda 6,5 Kw
Batteries	yes
Start battery	1x 100 Amp 2024
Service battery	4x AGM 140 Amp 2024
Battery charger/inverter	Mastervolt Combi 2000/100
Solar panel	2024 195 W
Diode battery combiners	yes
Shorepower	with cable
Extra info	remote control for bow and stern thruster

NAVIGATION

Compass	Garmin
Electric compass	Raytheon ST60 in and outside



BOARNCRUISER 40 CLASSIC LINE

Depth sounder/log	Raytheon ST60 in and outside
VHF	with DSC and Atis Icom HM1958
Autopilot	Raytheon ST6000+
Rudder angle indicator	In the autopilot screen
Plotter	Raymarine
AIS transceiver	yes
Navigation lights	yes

EQUIPMENT

Fixed windscreen	yes
Fixed hardtop	yes
Cockpit cover	complete tent in 2024 vernieuwd Full tent replaced 2024
Cockpit cushions	2024
Cockpit table	yes
Bathing platform	yes
Boarding ladder	yes
Anchor	yes
Windlass	electrical
Deck wash	yes
Sea railing	stainless steel
Grab rail (superstructure)	yes
Railing side opening gates	yes
Wiper	3 inside
Horn	electric
Fenders	yes
Mooring lines	yes
TV	with lift
Radio	SWM
Cockpit speakers	yes
Speakers in salon	yes
Clock - barometer	yes



Extinguisher in engine room

needs replacement



BOARNCRUISER 40 CLASSIC LINE



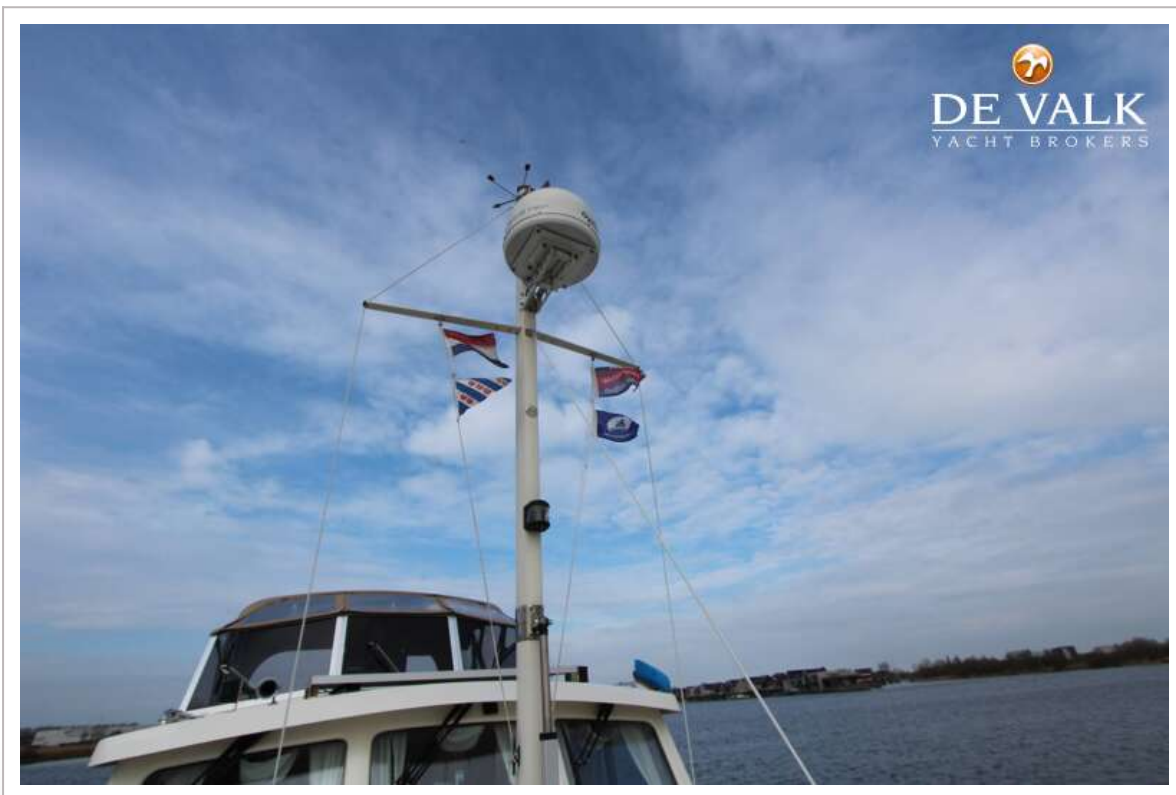
BOARNCRUISER 40 CLASSIC LINE



BOARNCRUISER 40 CLASSIC LINE



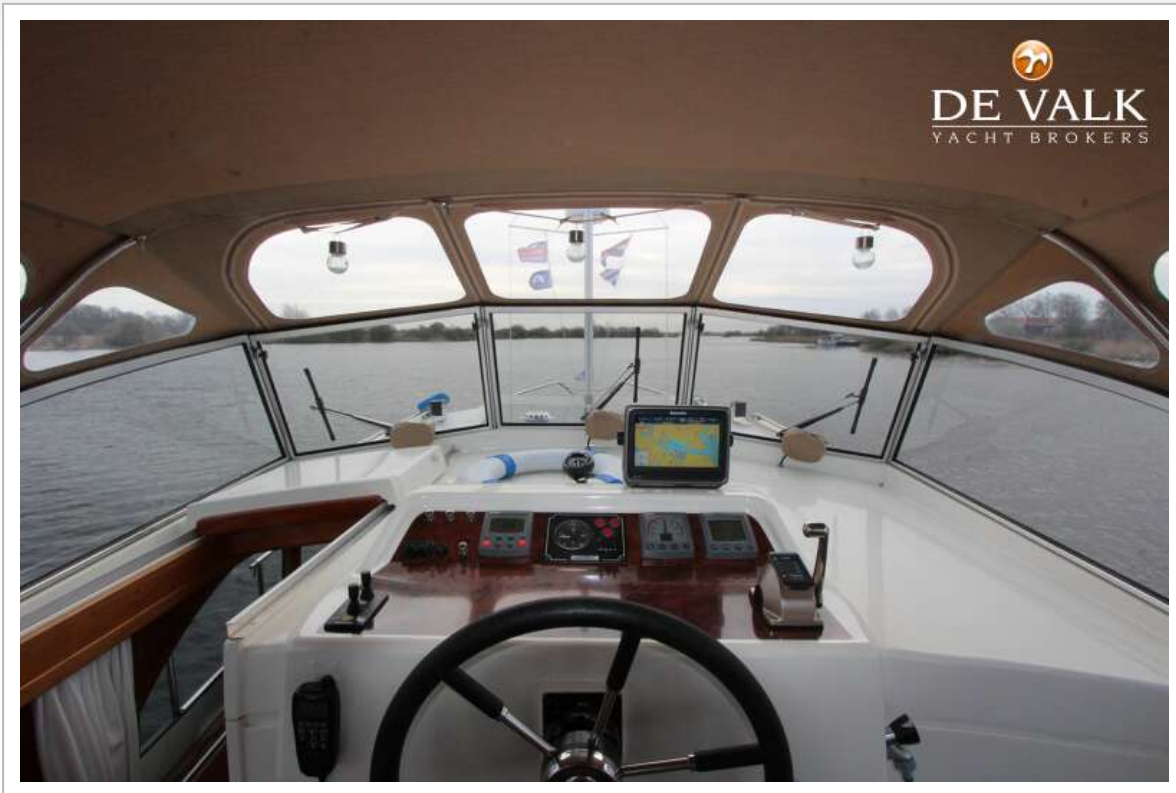
BOARNCRUISER 40 CLASSIC LINE



BOARNCRUISER 40 CLASSIC LINE



BOARNCRUISER 40 CLASSIC LINE



BOARNCRUISER 40 CLASSIC LINE



BOARNCRUISER 40 CLASSIC LINE



BOARNCRUISER 40 CLASSIC LINE



BOARNCRUISER 40 CLASSIC LINE



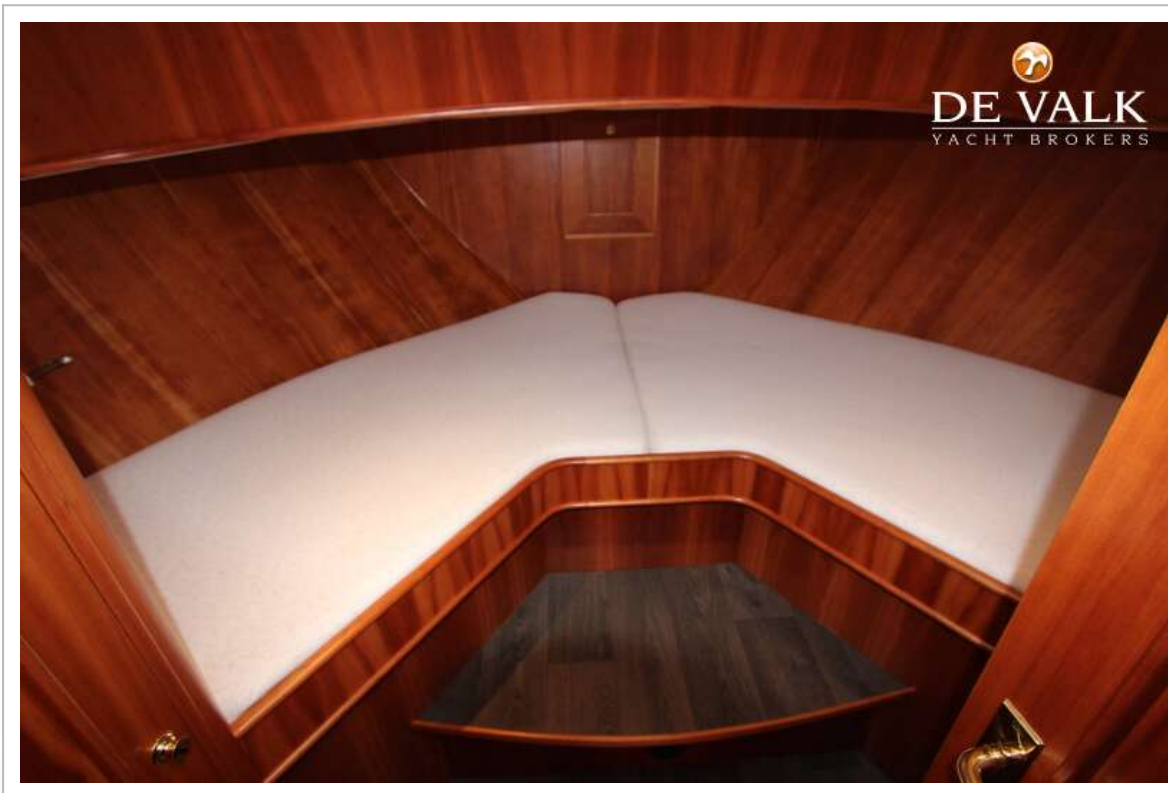
BOARNCRUISER 40 CLASSIC LINE



BOARNCRUISER 40 CLASSIC LINE



BOARNCRUISER 40 CLASSIC LINE



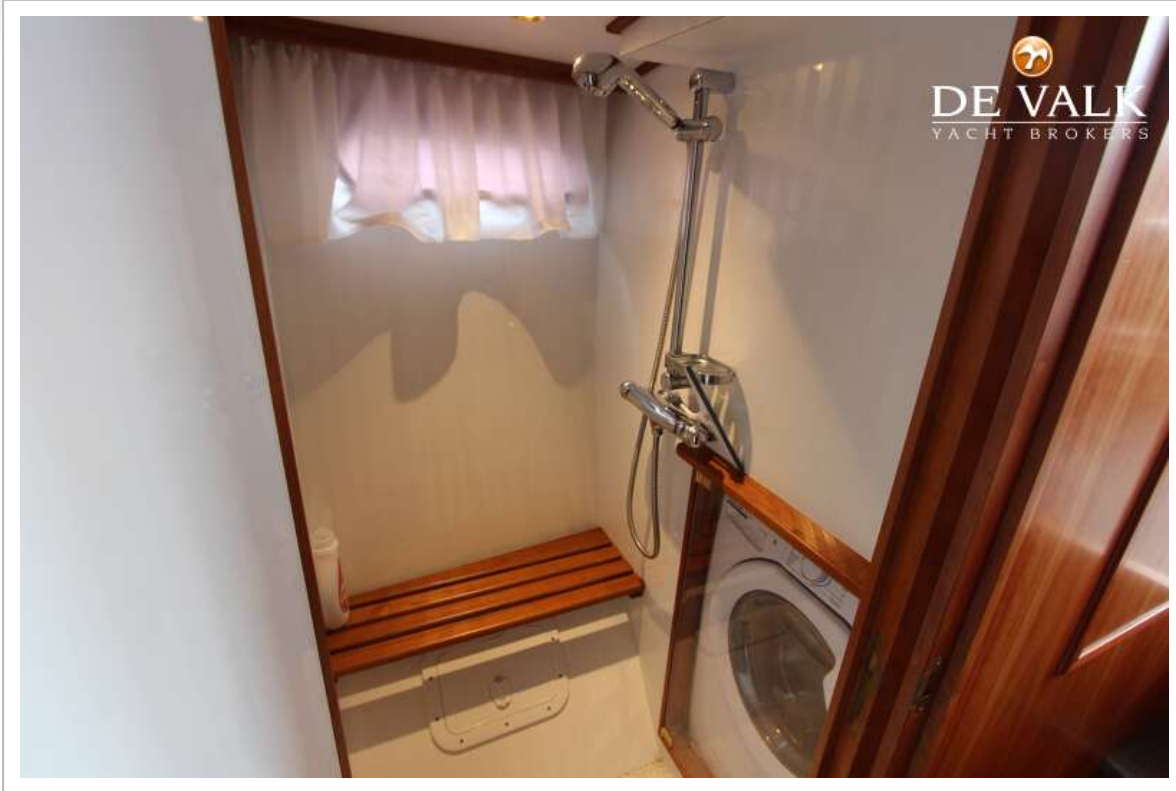
BOARNCRUISER 40 CLASSIC LINE



BOARNCRUISER 40 CLASSIC LINE



BOARNCRUISER 40 CLASSIC LINE



BOARNCRUISER 40 CLASSIC LINE

