



CHEETAH CATAMARAN 10.20

CHEETAH CATAMARAN 10.20

BROKER'S COMMENTS

Cheetah Marine 10.20 "Calactica" launched in 2023 by Post work Boats in The Netherlands. Very complete equipped for varial uses such as: dive operations, support or survey work, ROV operations, crew tender etc. CE and MCA certified. A twin Yamaha F300 outboards with Yamaha helm master system for trim, autopilot and autopositioning. Furtermore a single berth, toilet, galley dinette and two helm seats on a X craft shock mitigation seat. Viewing possible by appointment in The Netherlands.

Arne Doodeman

SPECIFICATIONS

Dimensions	10.20 x 3.70 x 0,50 / 1.00 (m)	Builder	Cheetah marine / Post workboats
Built	2023	Cabins	1
Material	GRP	Berths	1
Engine(s)	2 x Yamaha F300NSB petrol	Hp/Kw	2 x 300.00 (hp), 220.80 (kw)
Asking price	€ 329.000 (VAT Not paid)	Lying	contact Monnickendam

CONTACT

Sales office	De Valk Monnickendam B.V.	Telephone	+31 (0)299 65 63 50
Address	Hoogedijk 6 1145 PM Katwoude NL	E-mail	monnickendam@devalk.nl

DISCLAIMER

These particulars are given in good faith as supplied but cannot be guaranteed.



CHEETAH CATAMARAN 10.20

GENERAL

Model	CHEETAH CATAMARAN 10.20
Type	motor yacht
LOA (m)	10,20
Beam (m)	3,70
Draft (m)	1,00
Draft min (m)	0,50
Air draft min (m)	2,65
Year built	2023
Builder	Cheetah marine / Post workboats
Country	United Kingdom
Designer	Sean Strevens
Displacement (t)	5
CE norm	B
Hull material	GRP
Hull colour	blue
Hull shape	Catamaran
Superstructure material	GRP
Rubbing strake	rubber
Deck material	GRP
Deck finish	non-skid moulded in
Cockpit deck finish	non-skid paint
Antifouling (year)	2025
Window frame	aluminium
Window material	tempered glass
Deckhatch	yes
Radar arch	collapsible
Fuel tank (litre)	Approx. 600 litre
Level indicator (fuel tank)	Via the Yamaha digital screen
Freshwater tank (litre)	yes
Level indicator (freshwater)	KUS freshwater level indicator



CHEETAH CATAMARAN 10.20

Blackwater tank (litre)	yes
Wheel steering	hydraulic and Yamaha joystick system
Outside helm position	Docking station in de cockpit with Yamaha helm master joystick
Extra info	MCA certified

ACCOMMODATION

Cabins	1
Berths	1
Floor	woodprint
Open cockpit	yes
Saloon	yes
Heating	diesel ducted hot air Eberspacher
Dinette	yes
Opening door to cockpit	yes
Galley	yes
Countertop	yes
Sink	stainless steel Single stainless steel sink
Cooker	induction Steba single burner Induction stove
Microwave	Caso design M20 ecostyle
Fridge	Dometic
Water pressure system	electrical
Owners cabin	single bed
Toilet	Jabsco manual toilet
Toilet system	manual

MACHINERY

No of engines	2
Make	Yamaha
Type	F300NSB
HP	300
kW	220.80



CHEETAH CATAMARAN 10.20

Fuel	petrol
Maximum speed (kn)	43
Cruising speed (kn)	25
Drive	outboard
Engine controls	electrical Yamaha engine controls
Electric bilge pump	yes
Generator	Hyundai 3.2kw portable generator
Start battery	2 x Optima Redtop 50ah
Service battery	1 x Victron 220 ah
Battery monitor	Victron Color monitor, Victron BMV monitor
Battery charger	Victron Bluesmart charger 12/15-3, 2x Victron Orion-TR Smart 12 12-18 isolated DC/DC charger
Battery charger/inverter	Victron Quattro 12/3000/120
Solar panel	Solar panel with Victron Bluesolar charge controller MPPT 100/30
Shorepower	with cable
Auto positioning system	Yamaha Helm master
Trimtabs	Yamaha Helm master controls the trim of the outboard engines

NAVIGATION

Compass	Allpa liquid compass
Depth sounder	yes
Forw. looking depth sounder	yes
Log	yes
VHF	2x Icom VHF marine IC-M510
Autopilot	Yamaha Helm master
Radar	Navico Broadband 4G radar
Radar/GPS/plotter	2 x Lowrance HDS12
Personal computer	yes
Wifi antenna	Router with outside antenna for internet on board
AIS transponder	AIS class B transponder integrated in the system



CHEETAH CATAMARAN 10.20

Radio receiver	Uniden Tunk Tracker UBC 780 XLT
Camera	Several camera's with live video connection
Navigation lights	yes
Loudhailer	Standard Horizon loud haler VLH-3000A
Extra info	Echomax radar reflector
Extra info	Deck lights and bow light

EQUIPMENT

Boarding ladder	stainless steel On port side
Anchor	yes
Anchor chain	300 meter, 16mm Tipto 8 towline
Windlass	electrical
Deck wash	yes
Grab rail (superstructure)	stainless steel
Railing side opening gates	On portside is a door in the side
Pushpit	yes
Lifebuoy	yes
Wiper	TMG wiper control with 3 pantograph wipers
Window heating	Window heating on the front windows
Horn	yes
Radar reflector	yes
Fenders	yes
Mooring lines	yes
Radio	Fusion
Fire extinguisher	yes
Extra info	4 x 2T towing points Bollard pull 1500 KG
Extra info	Transport cradle available



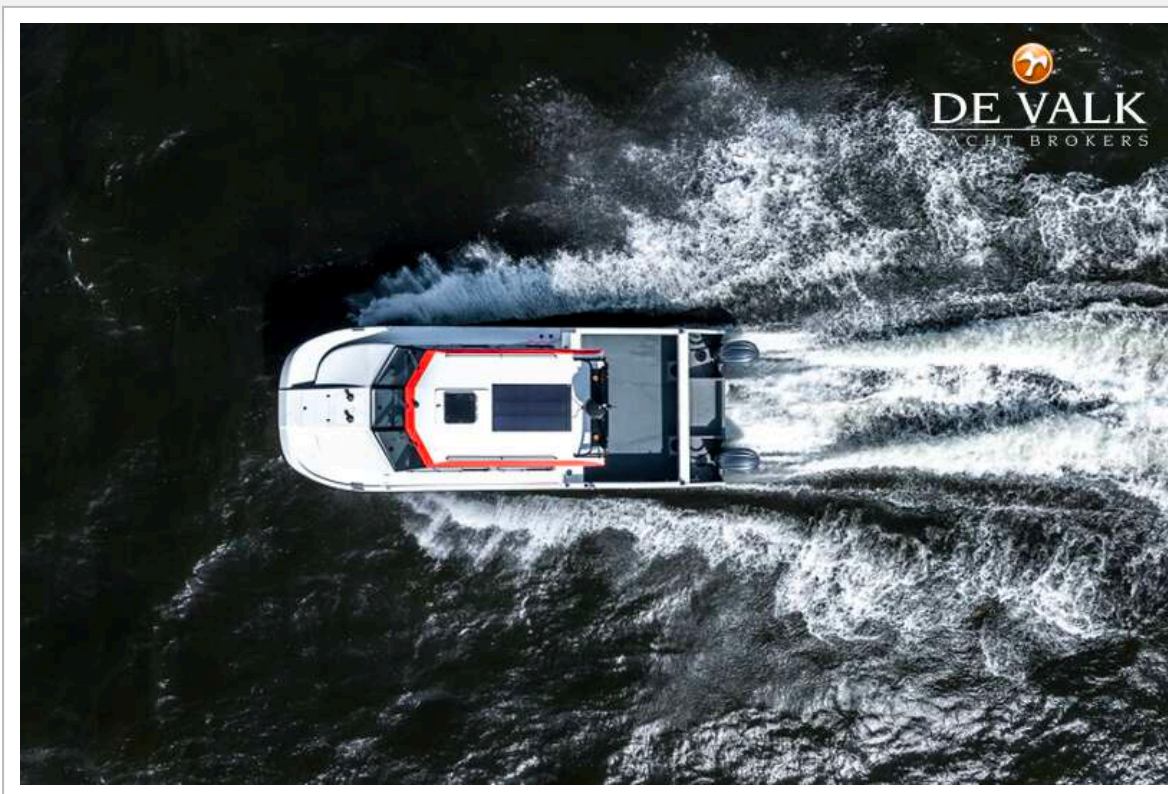
CHEETAH CATAMARAN 10.20



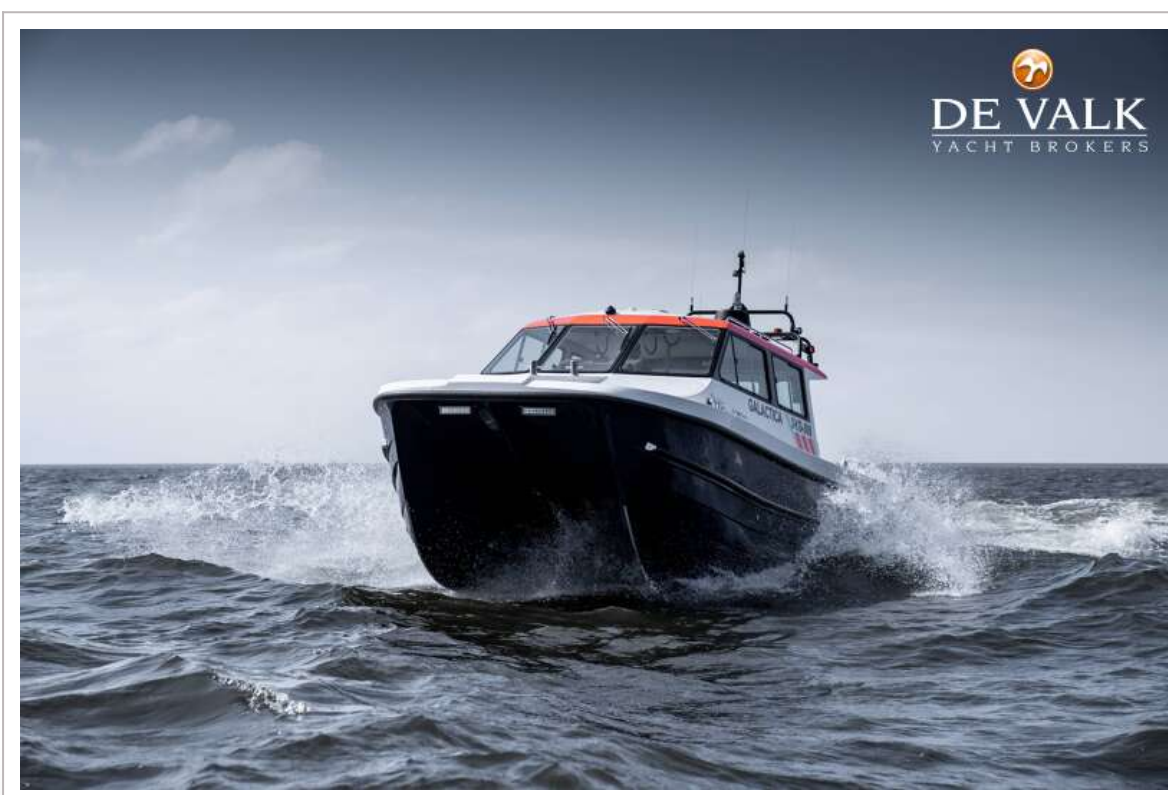
CHEETAH CATAMARAN 10.20



CHEETAH CATAMARAN 10.20



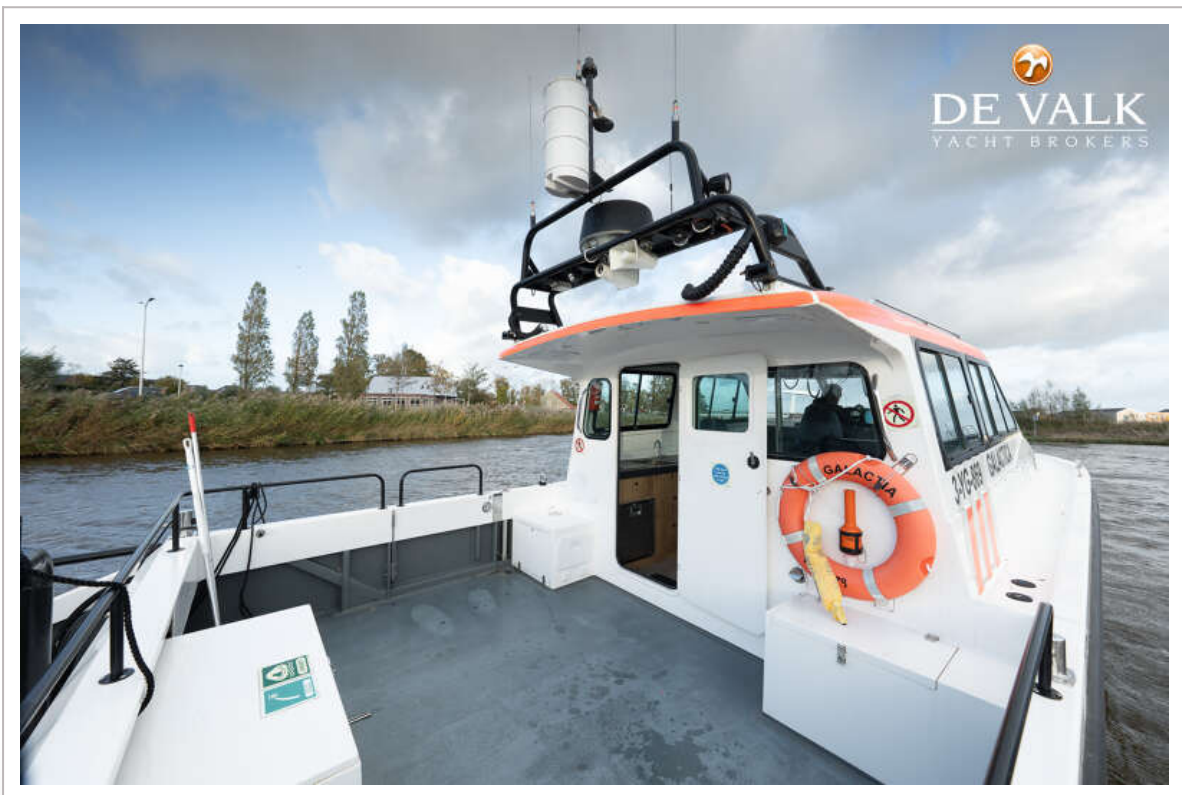
CHEETAH CATAMARAN 10.20



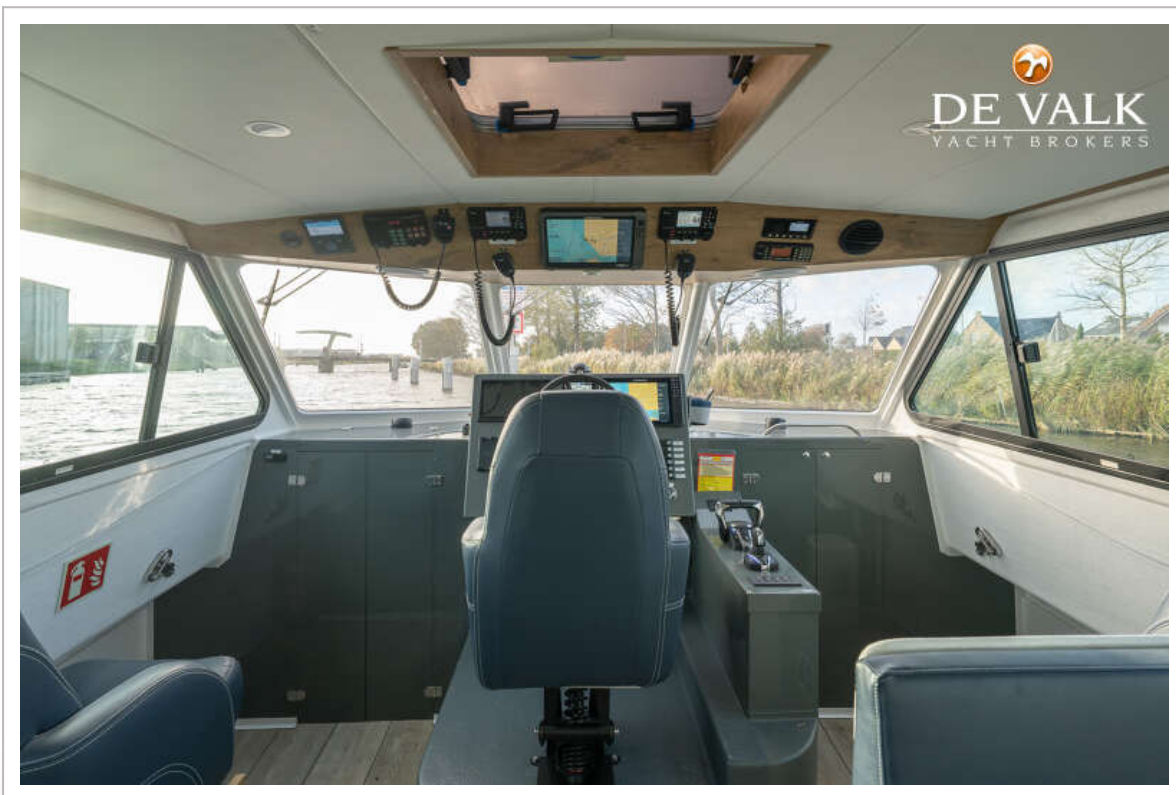
CHEETAH CATAMARAN 10.20



CHEETAH CATAMARAN 10.20



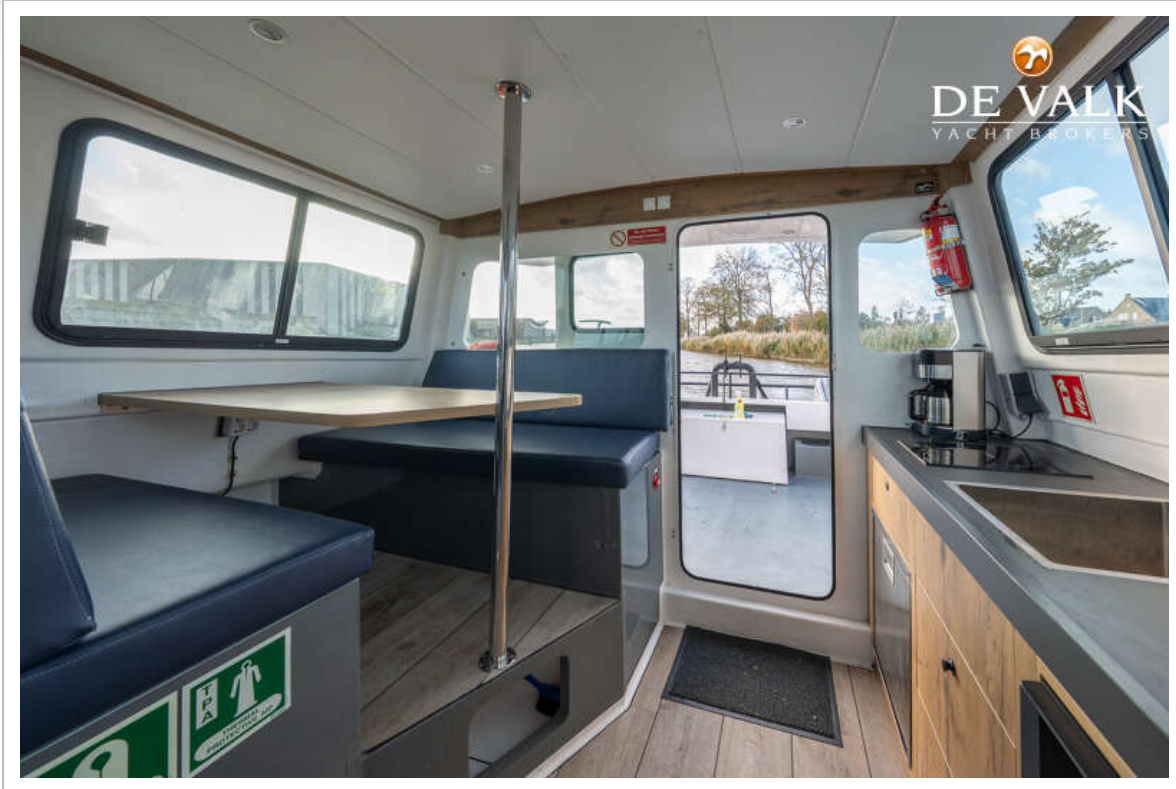
CHEETAH CATAMARAN 10.20



CHEETAH CATAMARAN 10.20



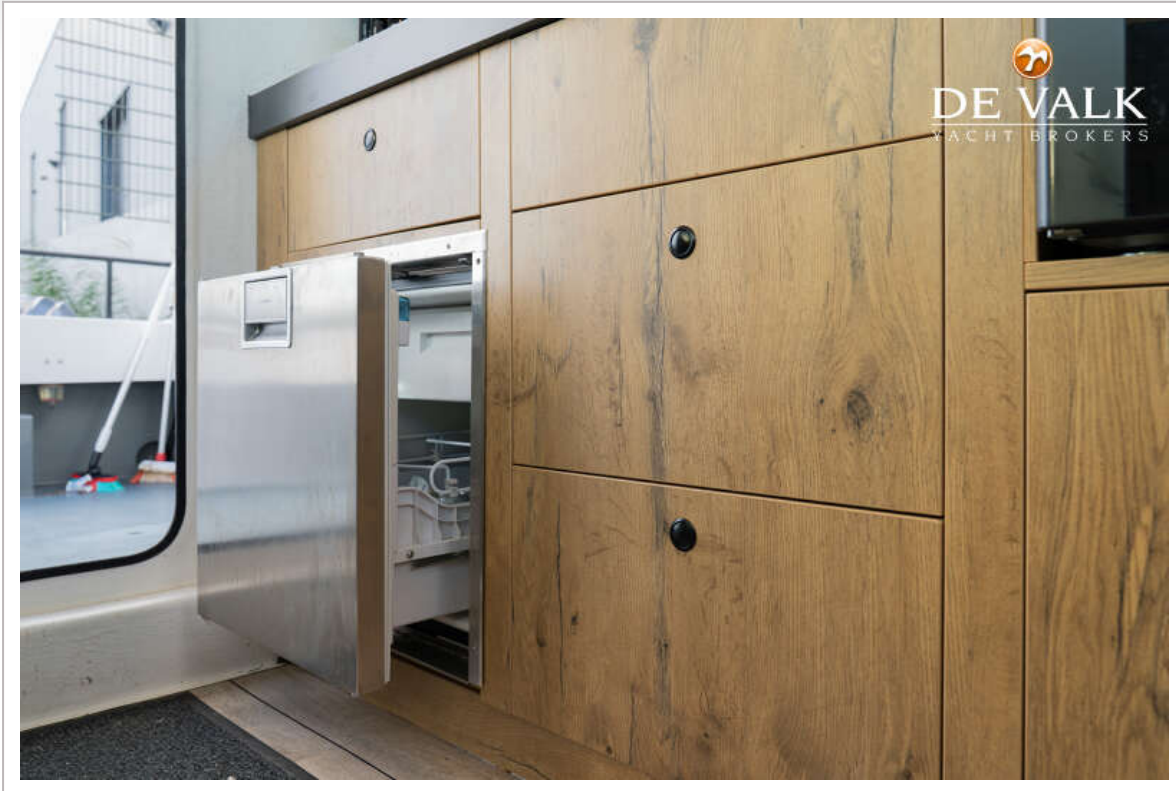
CHEETAH CATAMARAN 10.20



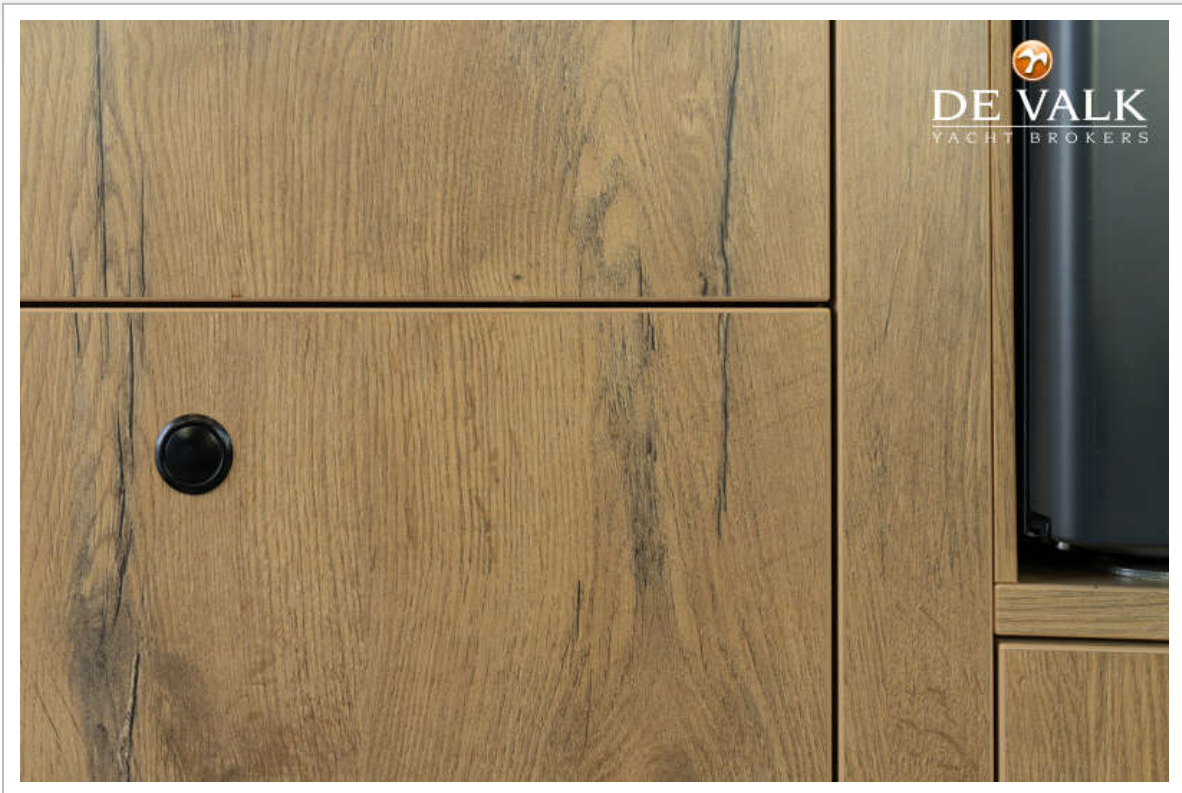
CHEETAH CATAMARAN 10.20



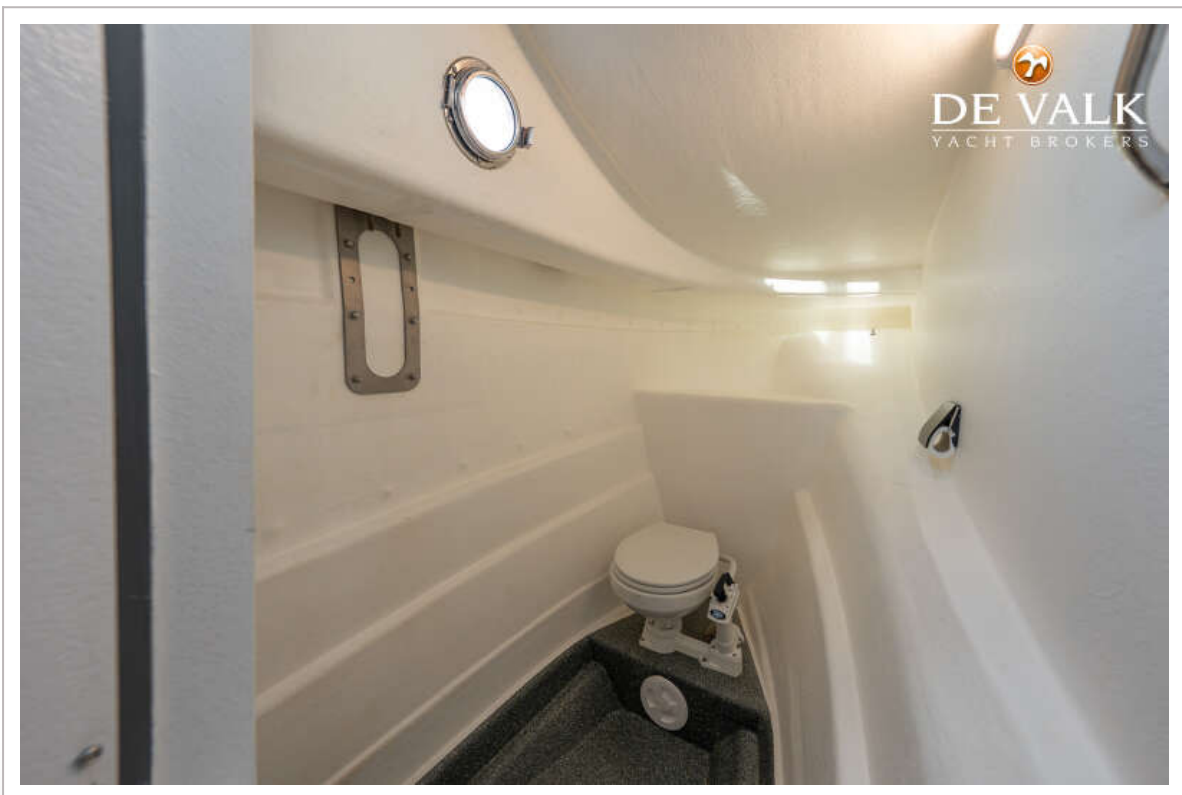
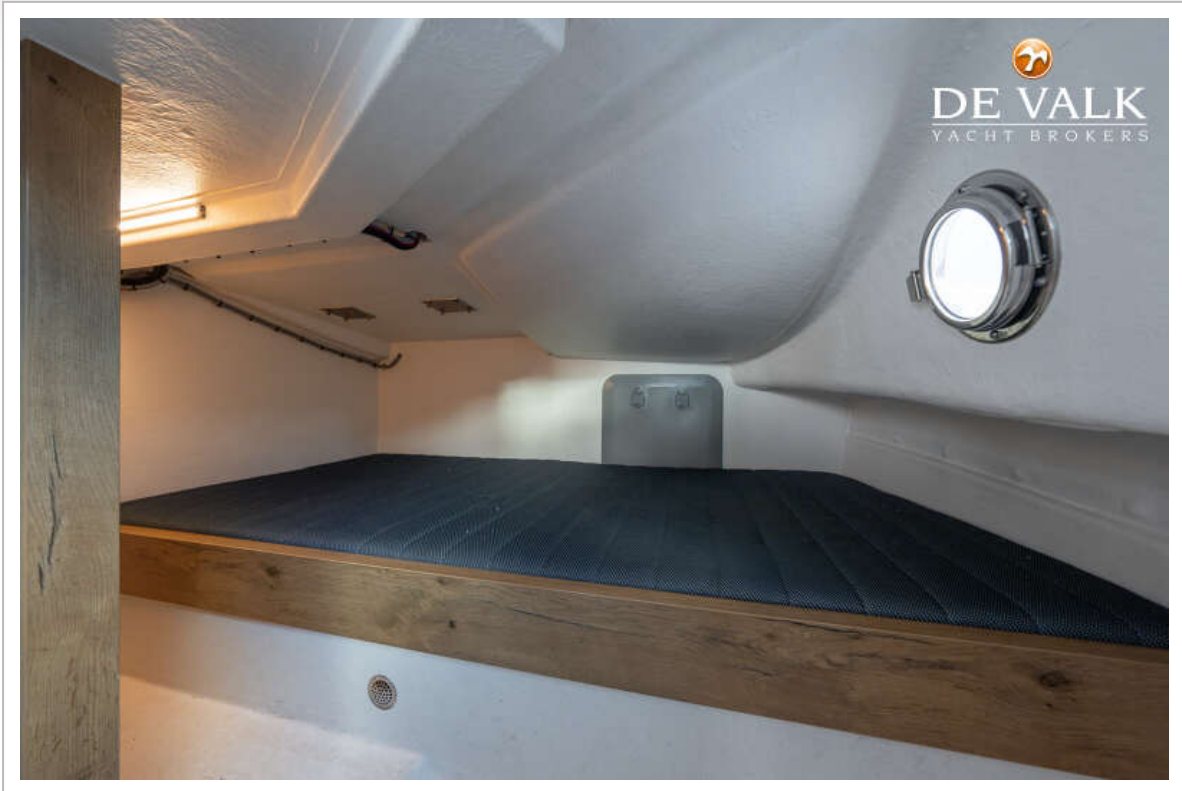
CHEETAH CATAMARAN 10.20



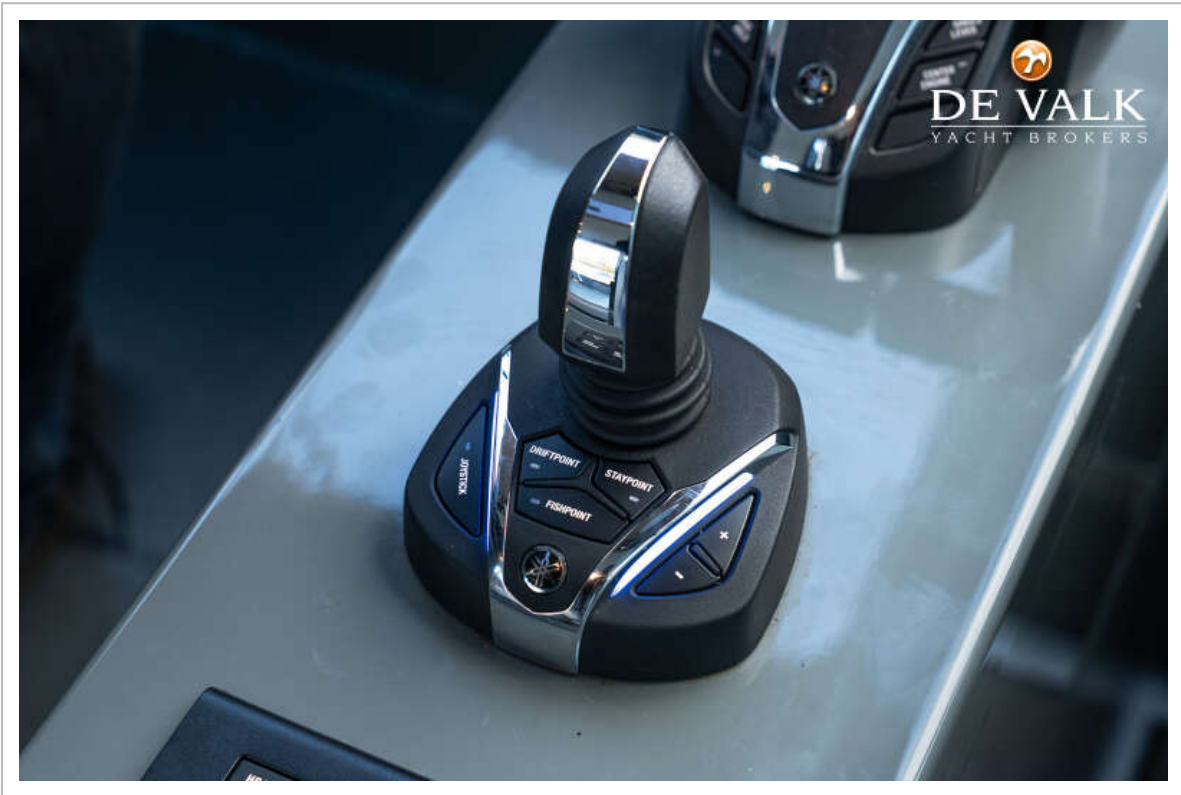
CHEETAH CATAMARAN 10.20



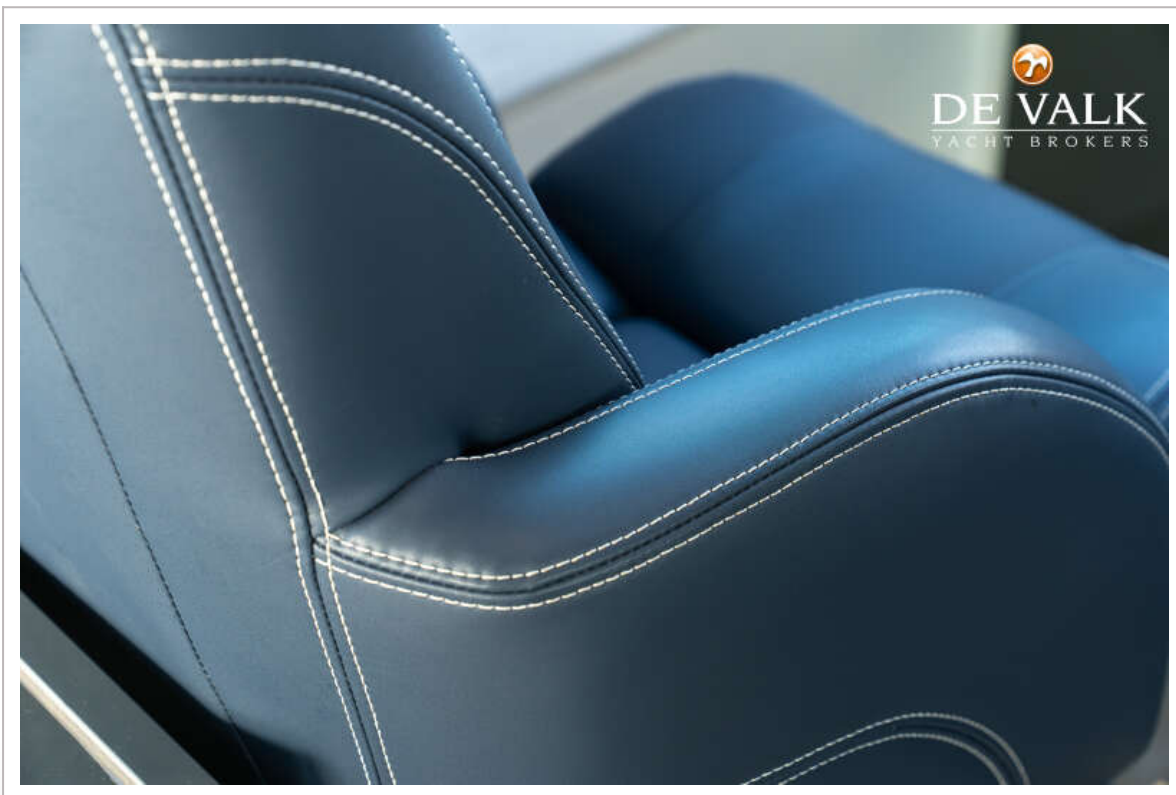
CHEETAH CATAMARAN 10.20



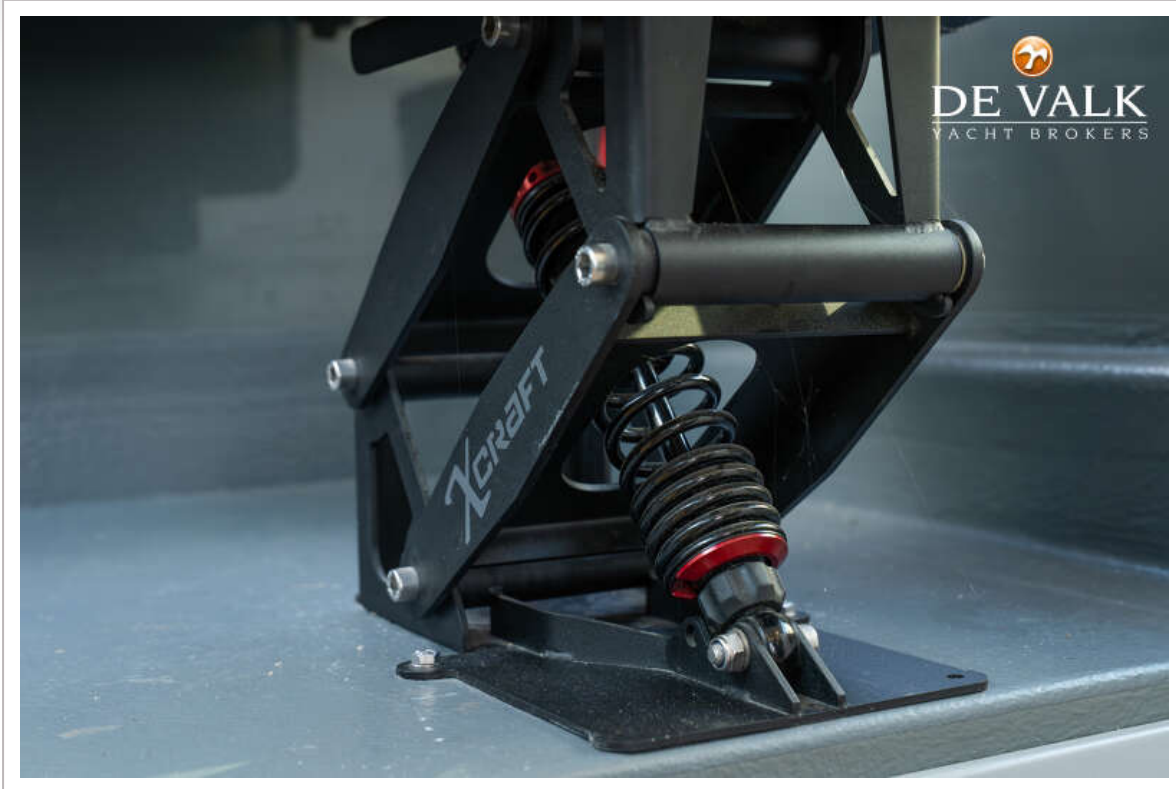
CHEETAH CATAMARAN 10.20



CHEETAH CATAMARAN 10.20



CHEETAH CATAMARAN 10.20



CHEETAH CATAMARAN 10.20

