



WESTHINDER 52

WESTHINDER 52

BROKER'S COMMENTS

The Westhinder 52 is a robust and seaworthy sailing expedition vessel, ideal for long voyages and liveaboard comfort. Featuring a aluminium hull, decksalon, twin rudders and double pedestal, variable draft, full set of furling sails, electric winches & twin rudders combined with a spacious deck layout and practical interior. The Westhinder 52 combines classic lines with proven ocean-going capability. Well-maintained and equipped for extended cruising, this yacht offers both safety and self-sufficiency at sea. Almost forgot, Bowthruster and SternJet

Hans Visser

SPECIFICATIONS

Dimensions	15.50 x 4.68 x 1,35 / 2.95 (m)	Builder	Folmer
Built	2012	Cabins	3
Material	Aluminium	Berths	6
Engine(s)	1 x Yanmar 4JH 4 HTE diesel	Hp/Kw	110.00 (hp), 80.96 (kw)
Asking price	€ 649.000 (VAT Paid)	Lying	contact Antibes

CONTACT

Sales office	De Valk Hindeloopen B.V.	Telephone	+31 514 52 40 00
Address	Oosterstrand 1 8713 JS Hindeloopen NL	E-mail	hindeloopen@devalk.nl

DISCLAIMER

These particulars are given in good faith as supplied but cannot be guaranteed.



GENERAL

Model	WESTHINDER 52
Type	sailing yacht
LOA (m)	15,50
LWL (m)	14,90
Beam (m)	4,68
Draft (m)	2,95
Draft min (m)	1,35
Air draft (m)	22,50
Headroom (m)	2,05
Year built	2012
Launched	2012
Builder	Folmer
Country	The Netherlands
Designer	Gaastmeer design
Displacement (t)	19,5
Ballast (tonnes)	lead 4,5 in keel and up to 1 ton waterbalst
CE norm	A
Hull material	aluminium
Hull colour	Unpainted aluminium hull deckhouse orange
Hull shape	round-bilged
Keel type	lifting keel Keel in keel
Superstructure material	aluminium
Rubbing strake	aluminum
Deck material	aluminium
Deck finish	cork
Superstructure deck finish	cork
Cockpit deck finish	cork
Deckhatch	4 x
Portholes	yes
Insulation	foam



WESTHINDER 52

Fuel tank (litre)	aluminium 440
Fuel tank 2 (litre)	aluminium 440
Level indicator (fuel tank)	yes
Fuel daytank (litre)	aluminium 70
Level indicator (daytank)	yes
Freshwater tank (litre)	aluminium 320
Level indicator (freshwater)	yes
Blackwater tank (litre)	aluminium 160
Level indicator (blackwater)	yes
Blackwater tank extraction	deck extraction + pump
Greywater tank (litre)	aluminium 160
Level indicator (greywater)	yes
Wheel steering	yes
Outside helm position	mechanical Double steering position with Jefa steering & Carbon wheels
Emergency tiller	yes
More info on hull	2 x 500 KG internal waterballast total 1000 kg
Extra info	Twin pedestal for twin rudders

ACCOMMODATION

Cabins	3
Berths	6
Interior	Modern white
Layout	Private
Floor	parquet
Open cockpit	yes
Deck saloon	yes
Saloon	yes
Headroom saloon (m)	2,30
Heating	central heating Post Marine
Navigation center	yes



Chart table	yes
Aft Cabin	yes
Sliding door to cockpit	yes
Galley	L shaped
Countertop	wood
Sink	stainless steel
Cooker	electric Force 10
Oven	electric Force 10
Extractor	yes
Fridge	yes
Freezer	yes
Hot water system	220V + engine
Water pressure system	yes
Manual and/or foot pump	With fresh and sea water
Crockery	yes
Owners cabin	v-bed In the bow
Bed length (m)	2,10
Wardrobe	hanging/drawers/shelves
Bathroom	separate
Toilet	separate
Toilet system	electric Jabsco de luxe auto flush
Wash basin	in the bathroom
Shower	separate
Guest cabin 1	bunk bed
Bed length (m)	2,10
Wardrobe	hanging and shelves
Guest cabin 2	double bed
Bed length (m)	2,10
Wardrobe	hanging
Washing machine/dryer combi	yes



MACHINERY

No of engines	1
Make	Yanmar
Type	4JH 4 HTE
HP	110
kW	80.96
Fuel	diesel
Maximum speed (kn)	9
Cruising speed (kn)	7,5
Engine hours	2500
Engine cooling system	freshwater heat exchanger
Shaft seal	yes
Engine controls	bowden cable
Gearbox	Hurth DF-112
Bowthruster	electric Sidepower SP-155
Sternthruster	electric Jet Thruster JT-70
Propeller type	folding
Propeller blades	4
Propeller shaft material	stainless steel
Shaft lubrication	water
Manual bilge pump	yes
Electric bilge pump	yes
Bilge alarm	yes
Electrical installation	12 & 24 V DC & 220 V AC
Generator	Whisper gen
Running hours generator	100
Batteries	yes
Start battery	yes
Service battery	yes
Navigation Battery	yes
Generator battery	yes



Bowthruster battery	yes
Battery monitor	yes
Battery charger/inverter	Victron Phoenix Multi 5000 Watt
Diode battery combiners	yes
Shorepower	with cable
Watermaker	60l/h

NAVIGATION

Compass	yes
Electric compass	NKE TL25
Multi control display	NKE
Depth sounder	NKE Forward sensor
Log	NKE
Windset	NKE
Repeater	NKE
VHF	yes
Autopilot	NKE Gyropilot incl remote
Radar	Simrad 2025
GPS	NKE
Plotter	2 x Simrad 2025
EPIRB	yes
Personal MOB transmitter	yes
Extra info	Orca navigation

EQUIPMENT

Sprayhood with grab rail	yes
Sun awning	yes
Winter cover	yes
Cockpit table	yes
Boarding ladder	yes
Deck shower	yes



Anchor	Rocna
Anchor chain	yes
Anchor 2	Danforth Spare FX55
Anchor chain	yes
Windlass	electrical
Sea railing	wire
Grab rail (superstructure)	stainless steel
Railing side opening gates	yes
Pushpit	yes
Pulpit	yes
Life raft	container
Life raft (pers)	6
Last life raft survey	Needs service
Lifejackets	yes
Lifebuoy	yes
Danbuoy	yes
Fenders	yes
Mooring lines	yes
Spare parts	yes
Tools	yes
Clock - barometer	yes
Fire extinguisher	yes

RIGGING

Rigging	cutter 7/8 without need of running backstays
Standing rigging	wire Compacted strand Gibb
Brand mast	Neutmast
Material mast	aluminium Orange
Spreaders	Three sets of swept aft
Keel stepped mast	yes
Mainsail	Inmast furling 2012



Stoway mast	yes
Cutterstay	yes
Jib	50m2
Genoa	112%
Genoa furler	Harken MK 4
Cutter furler	Harken MK 4
Code Zero	On Harken MK 4 furler
Stormjib	15 m2
Boomvang	gasspring
Primary sheet winch	2 x Andersen 58 2 Speed ST electric
Secondary sheet winch	2 x Andersen 52 2 speed ST
Genoa sheetwinches	yes
Halyard winches	2 x Andersen 46 electric ST
Multifunctional winches	1 x Andersen 2 Speed ST
Spi-pole	yes
Extra info	Fixed bowsprit
Extra info	All Sails make Insails heavy duty cloth for blue water cruising



WESTHINDER 52



WESTHINDER 52



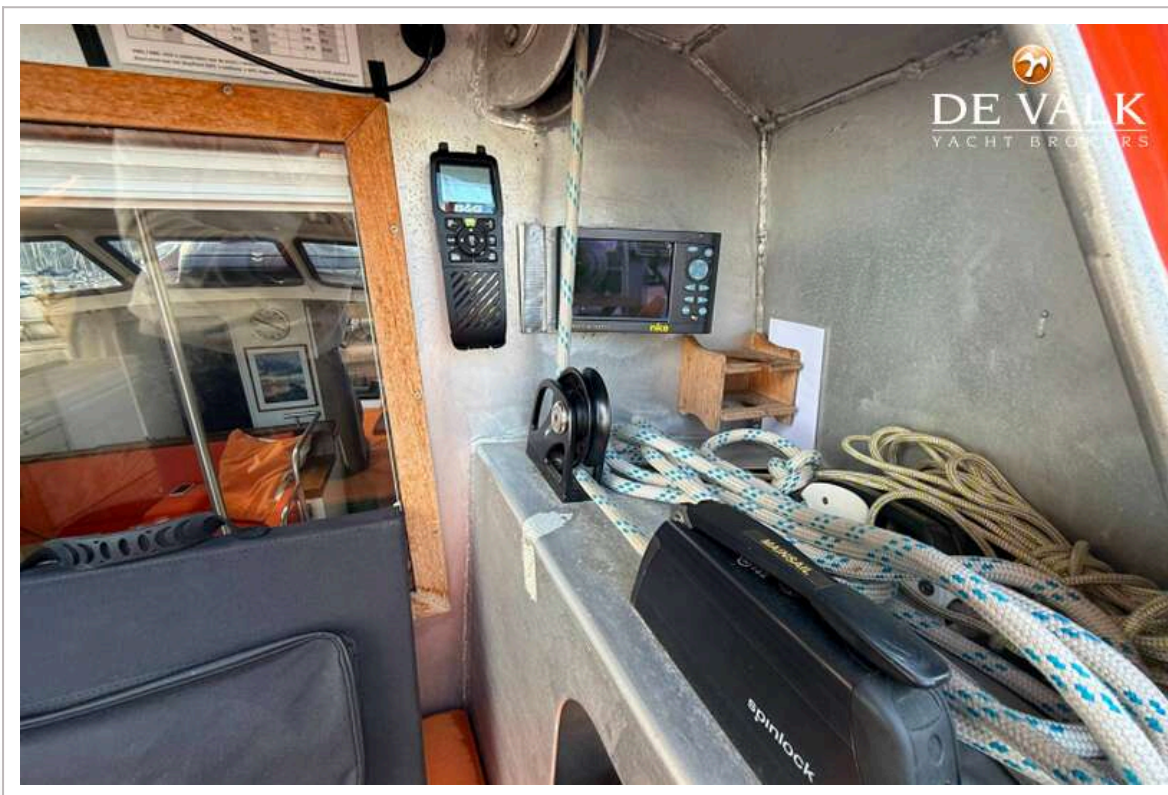
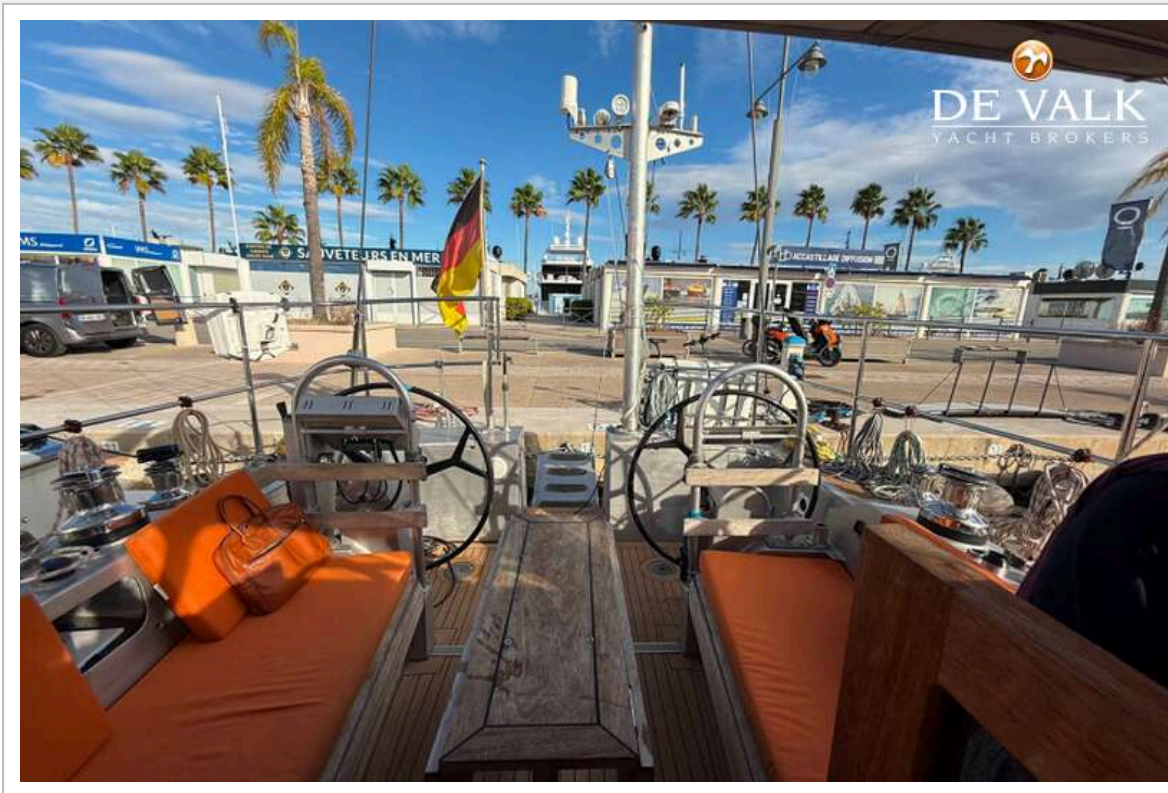
WESTHINDER 52



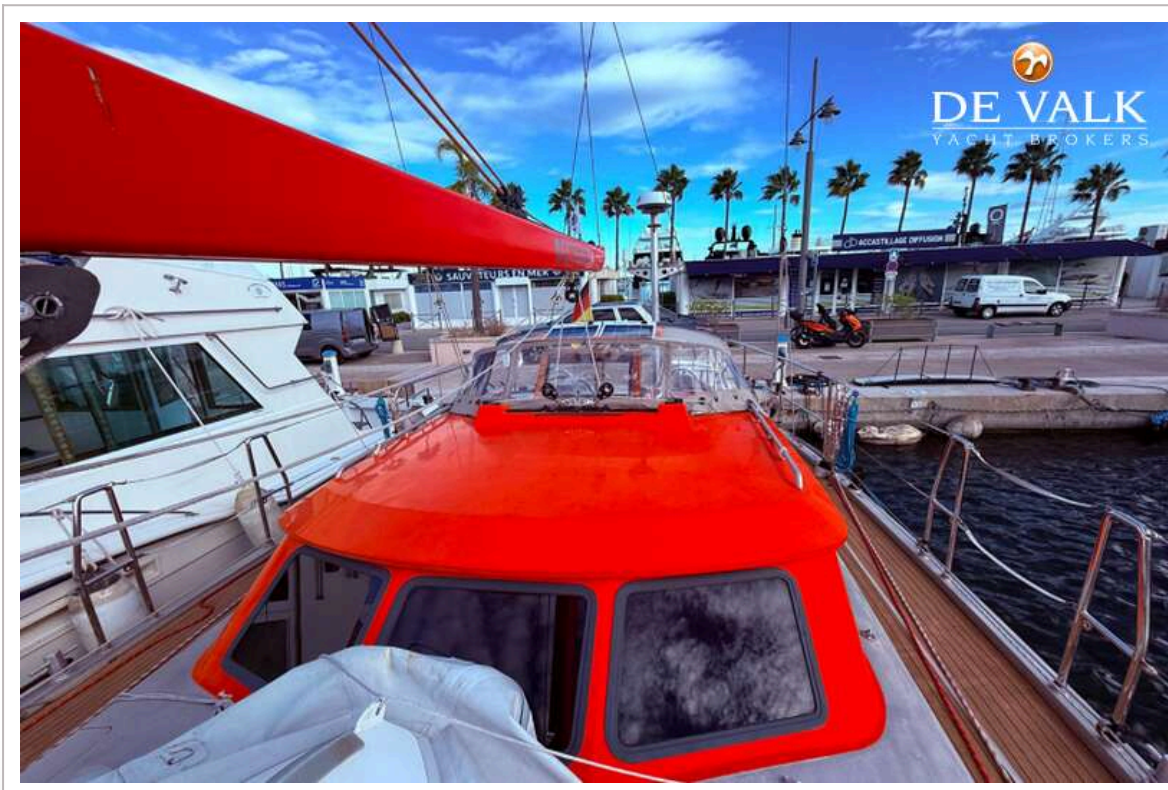
WESTHINDER 52



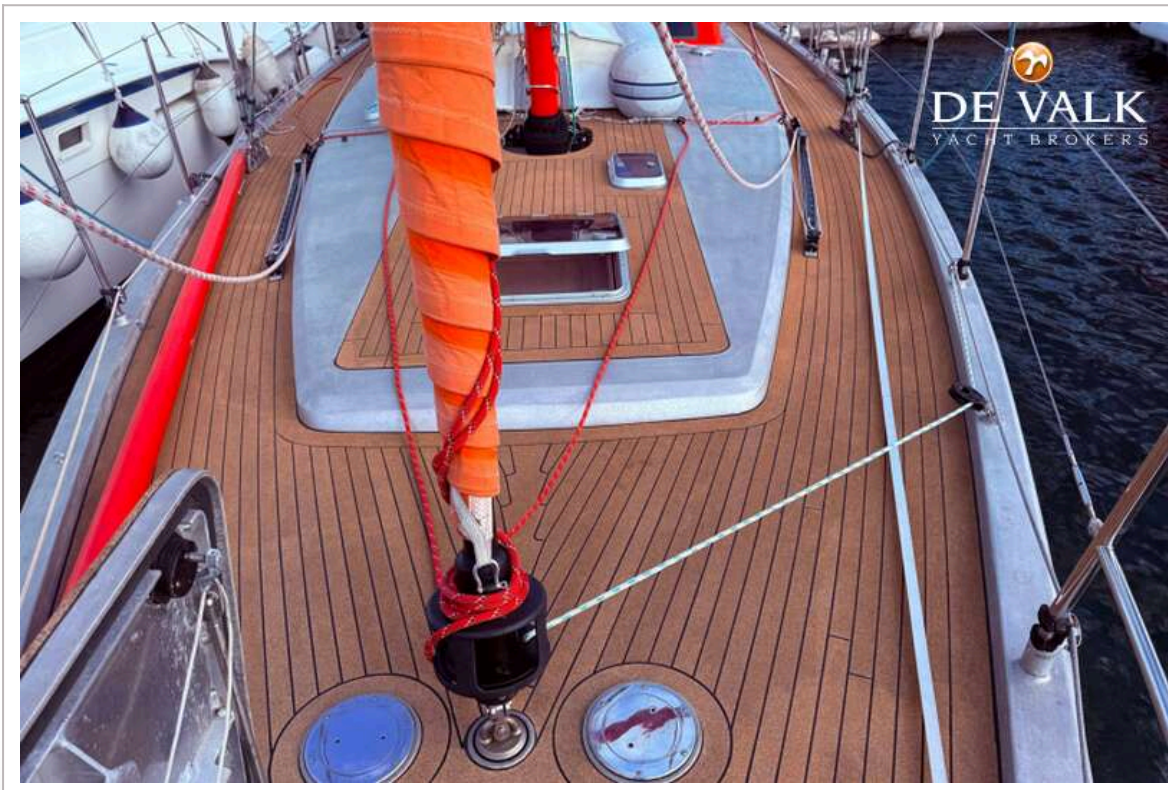
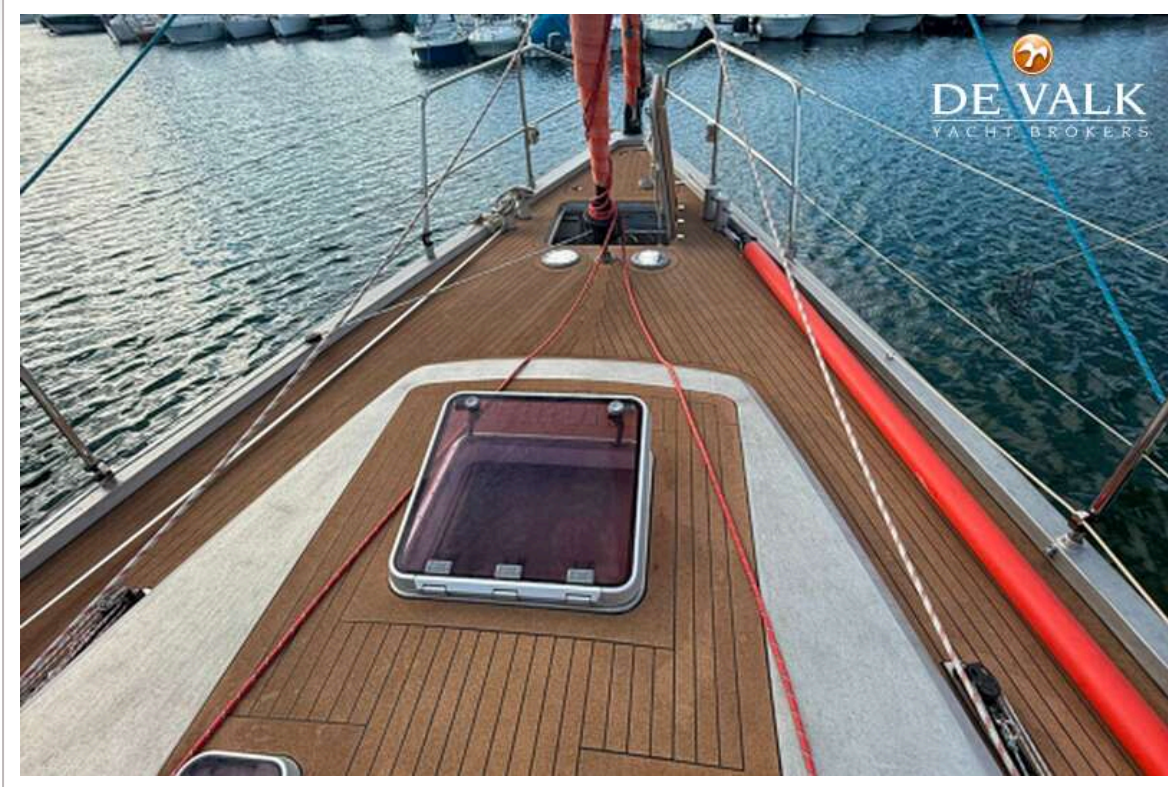
WESTHINDER 52



WESTHINDER 52



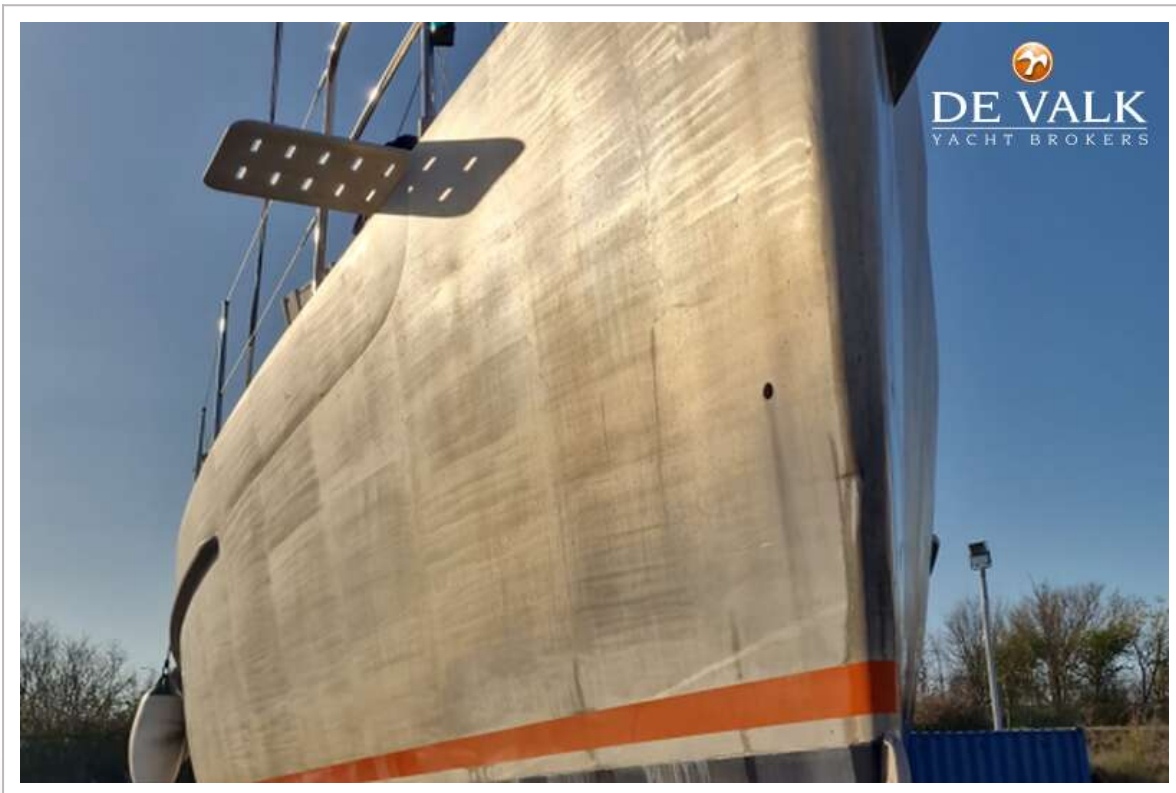
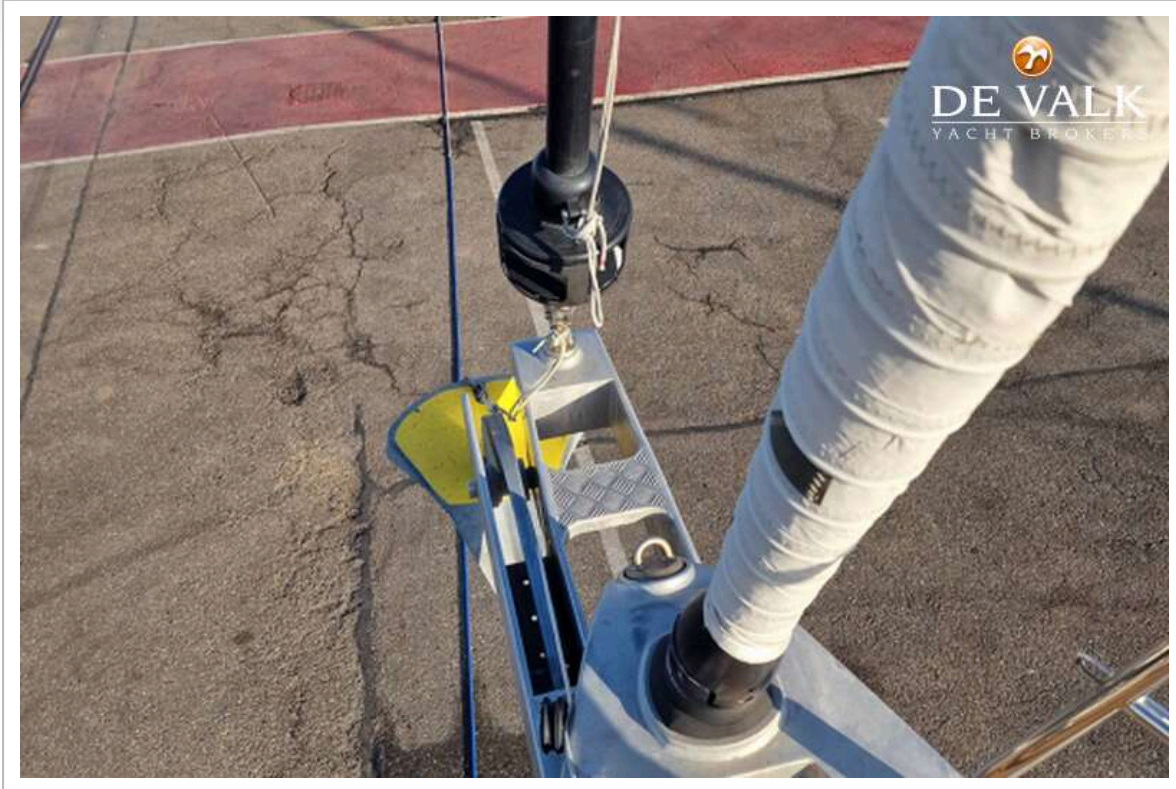
WESTHINDER 52



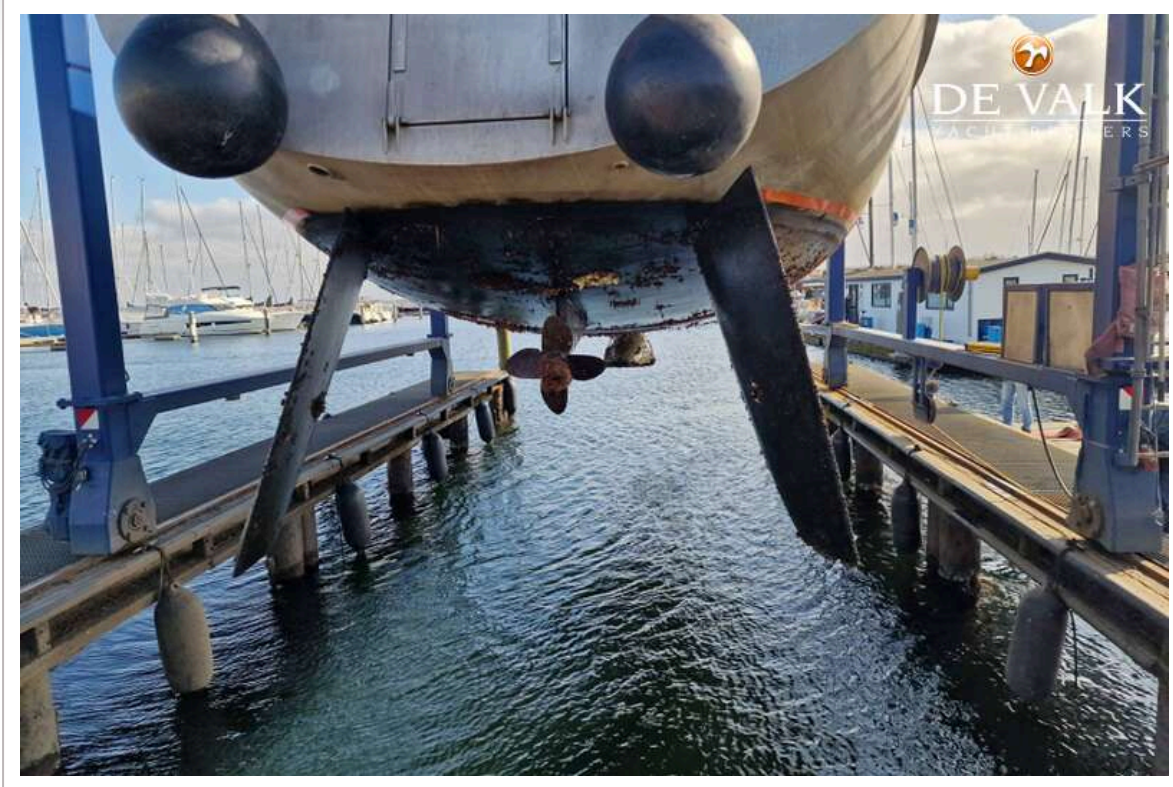
WESTHINDER 52



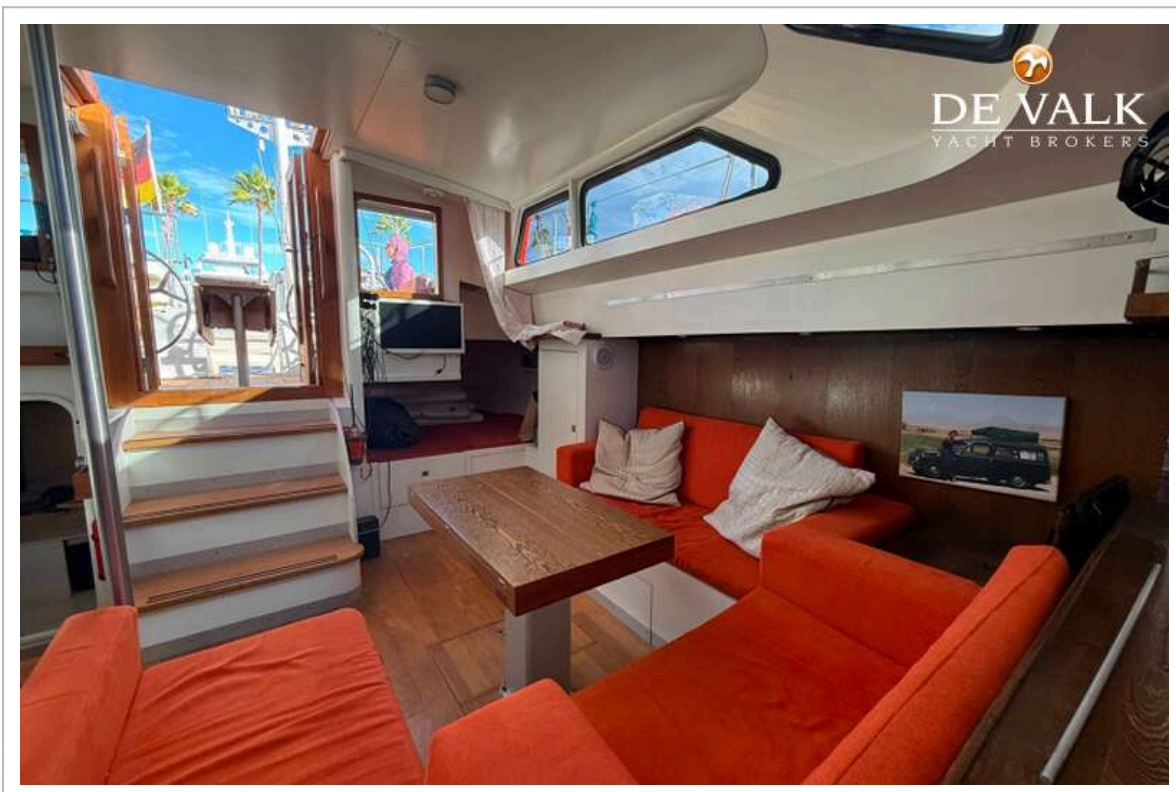
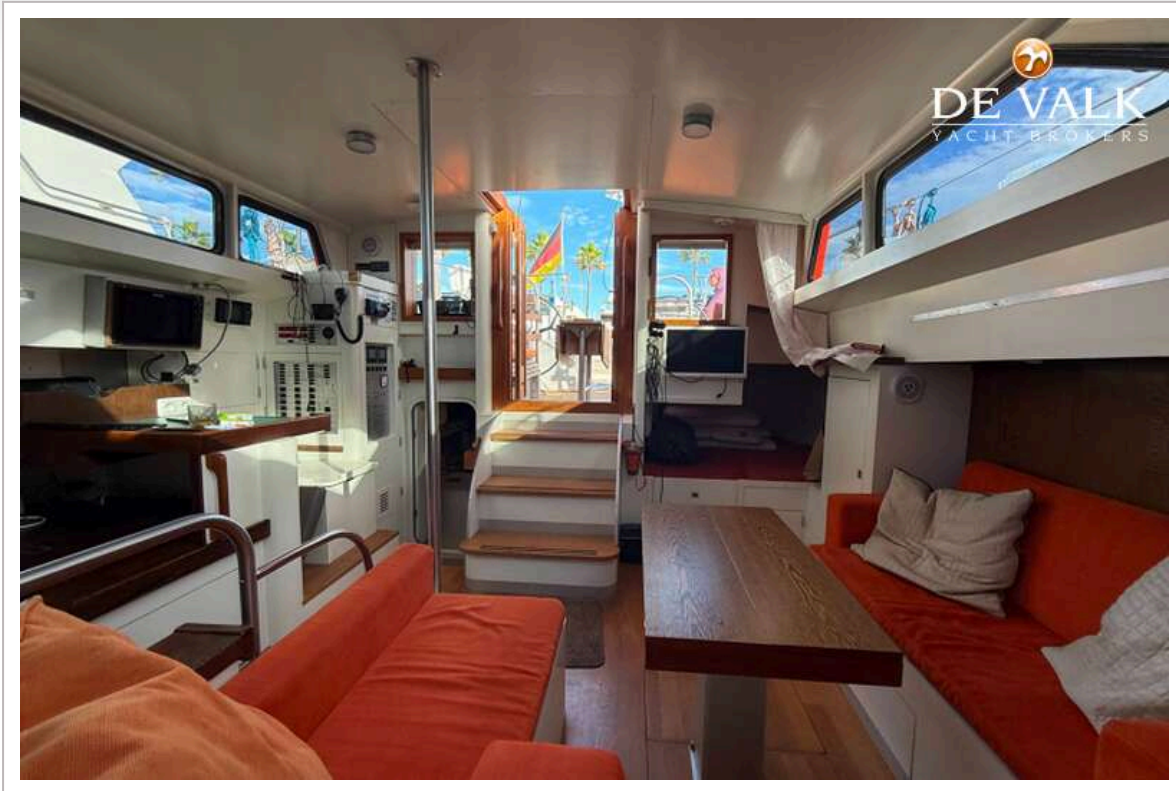
WESTHINDER 52



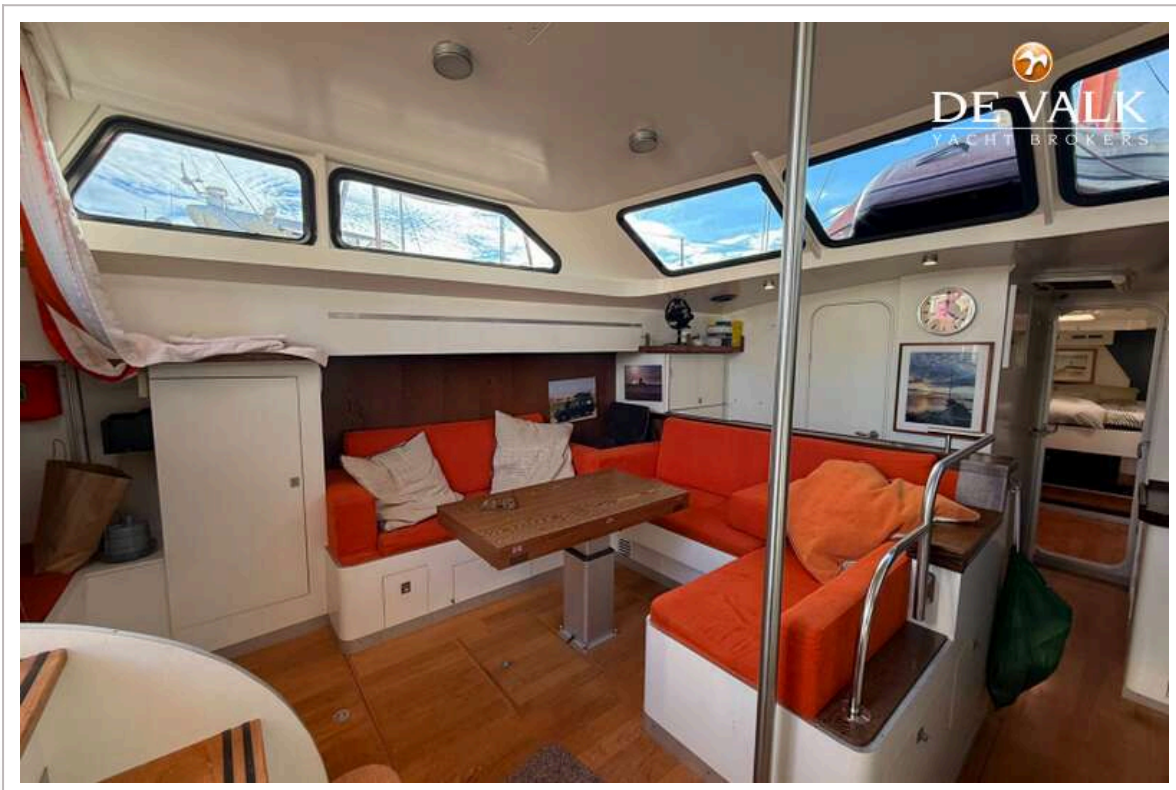
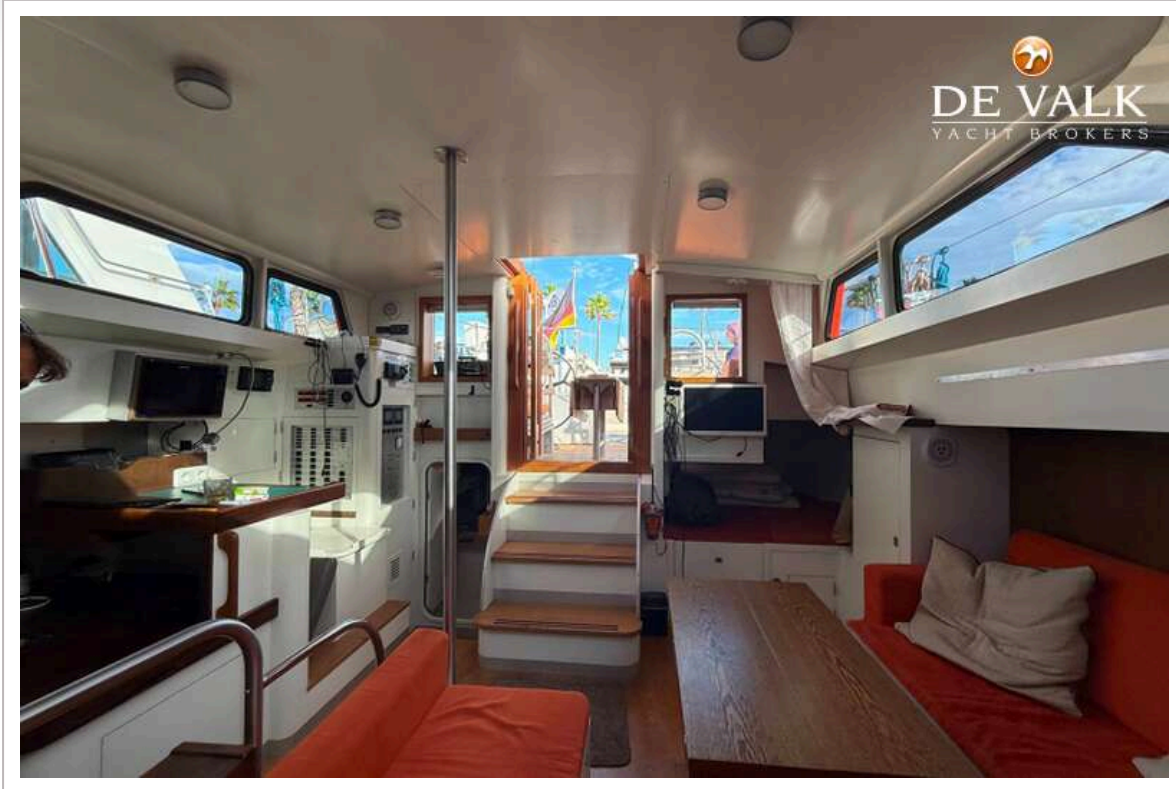
WESTHINDER 52



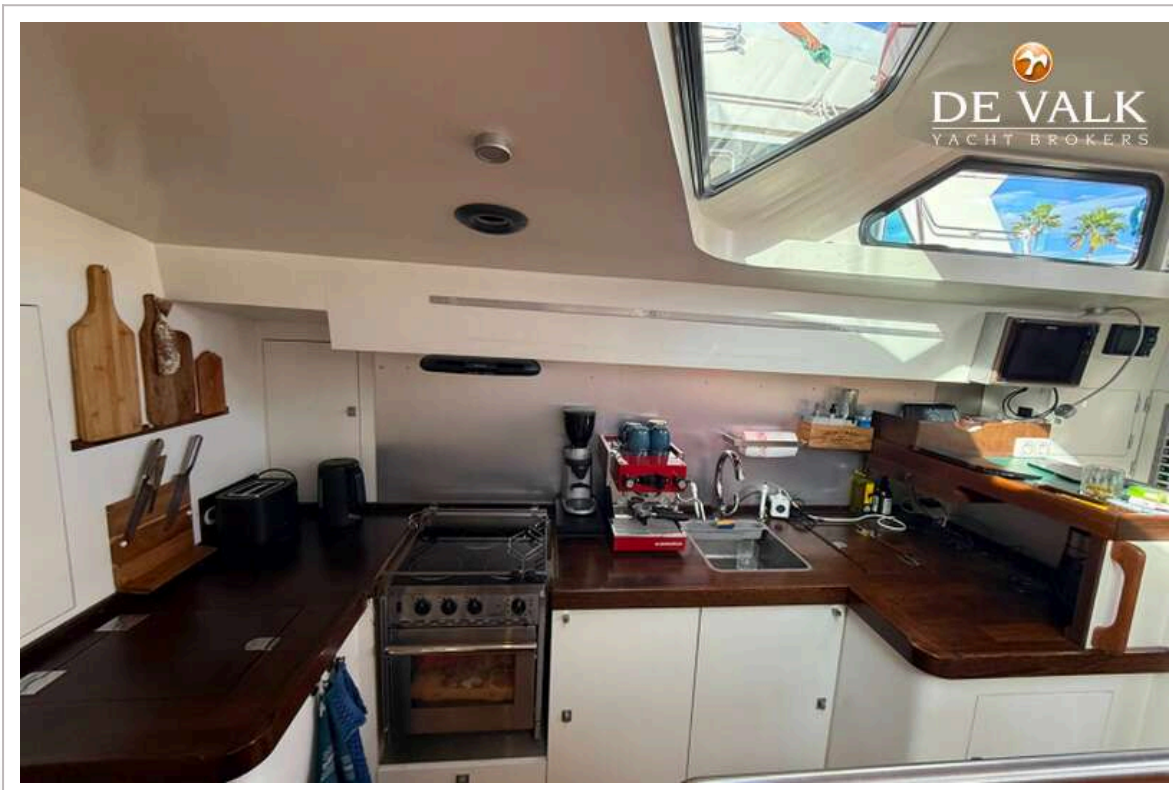
WESTHINDER 52

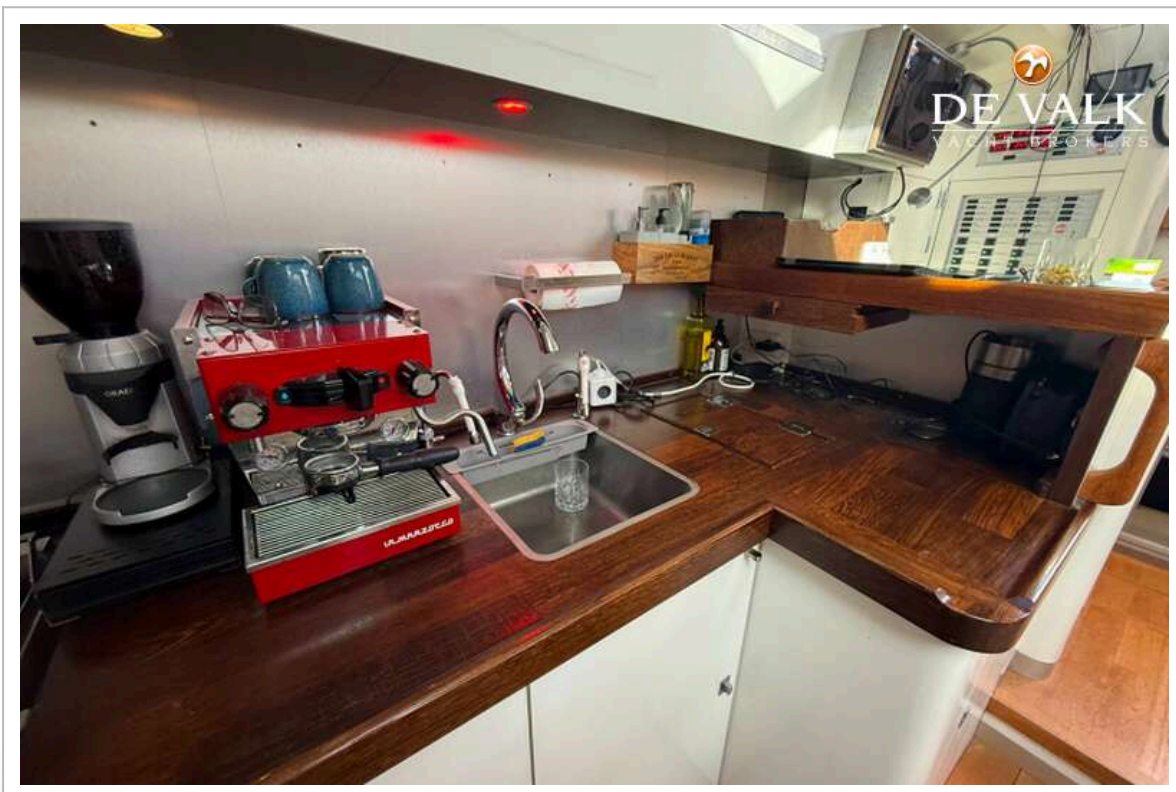
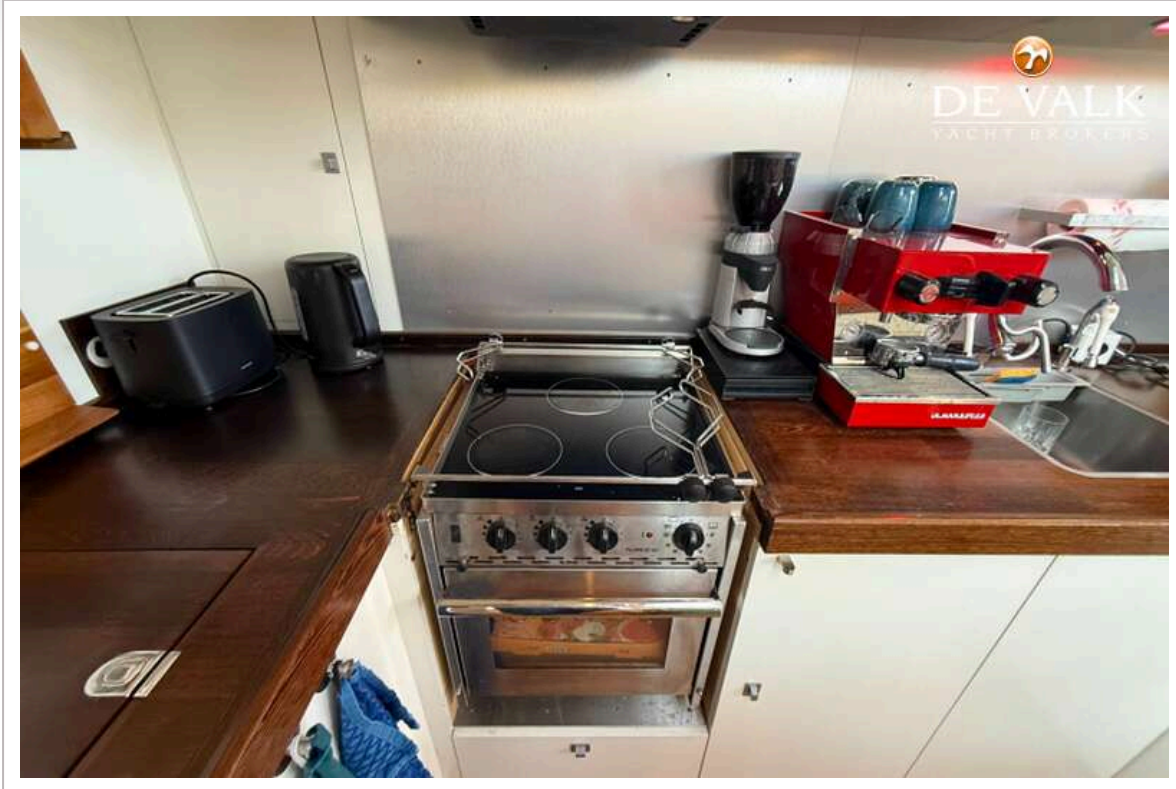


WESTHINDER 52

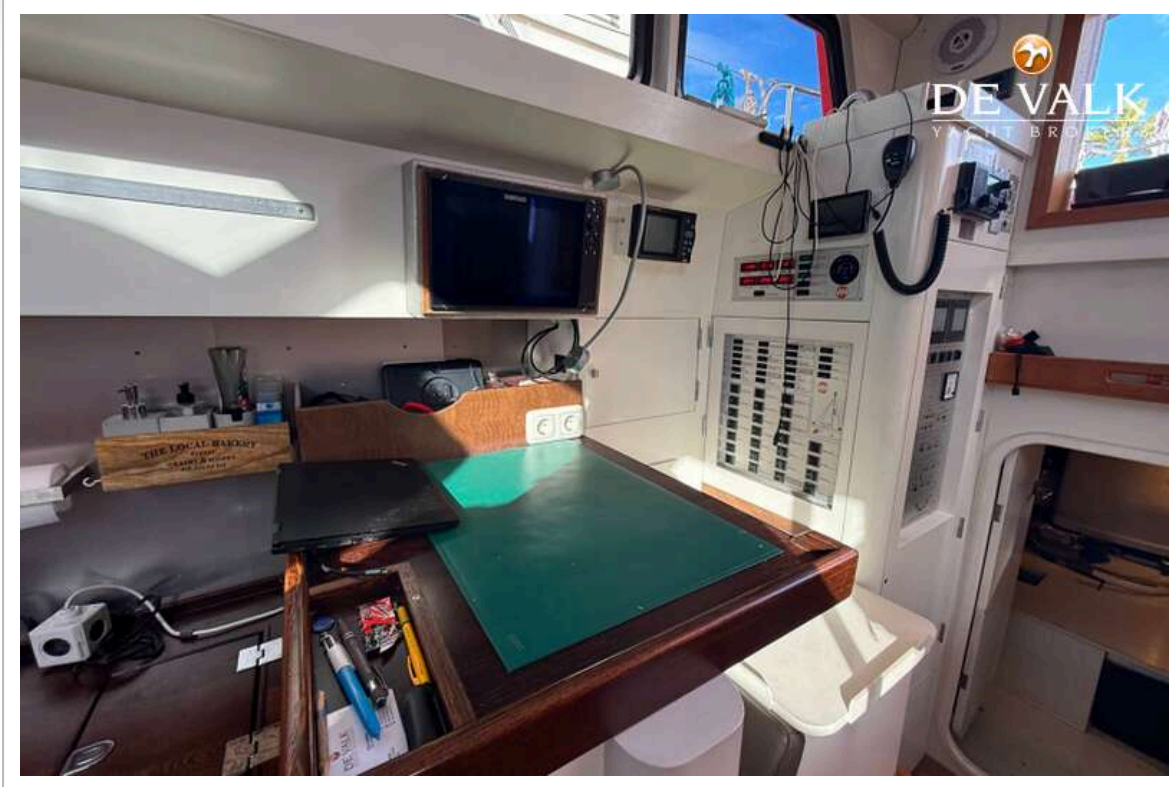


WESTHINDER 52





WESTHINDER 52

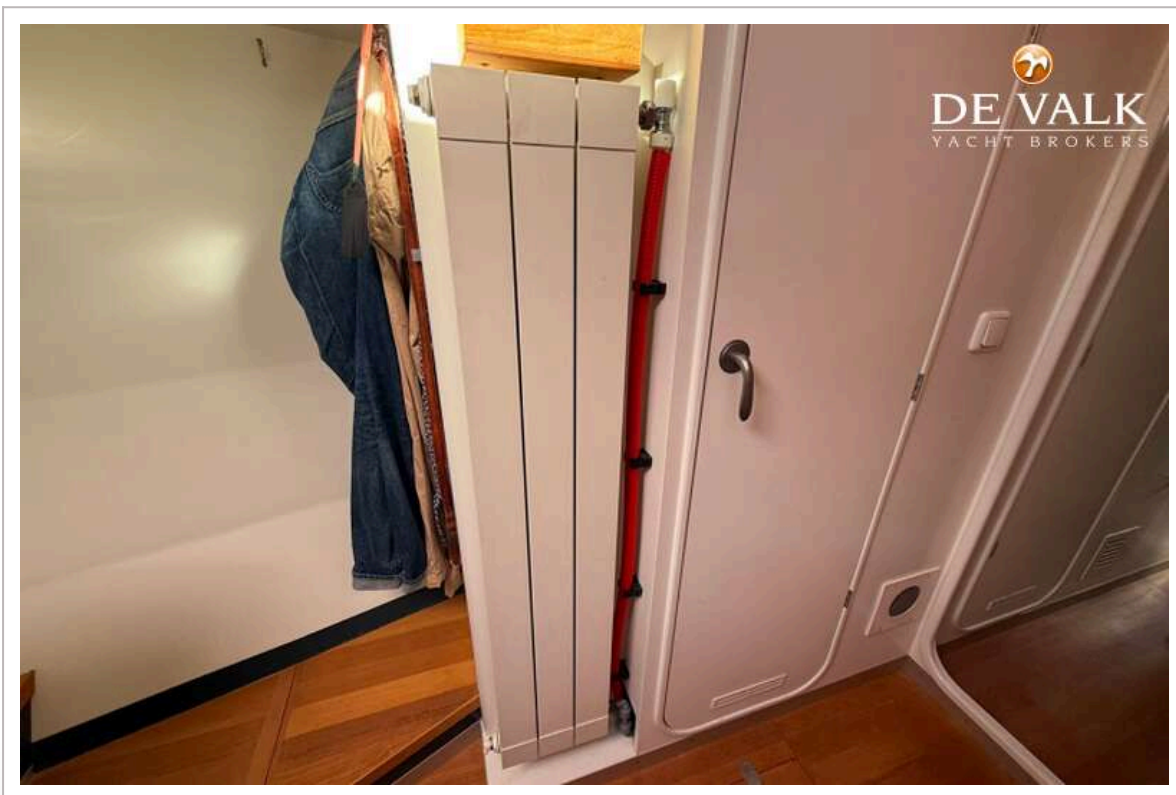


WESTHINDER 52

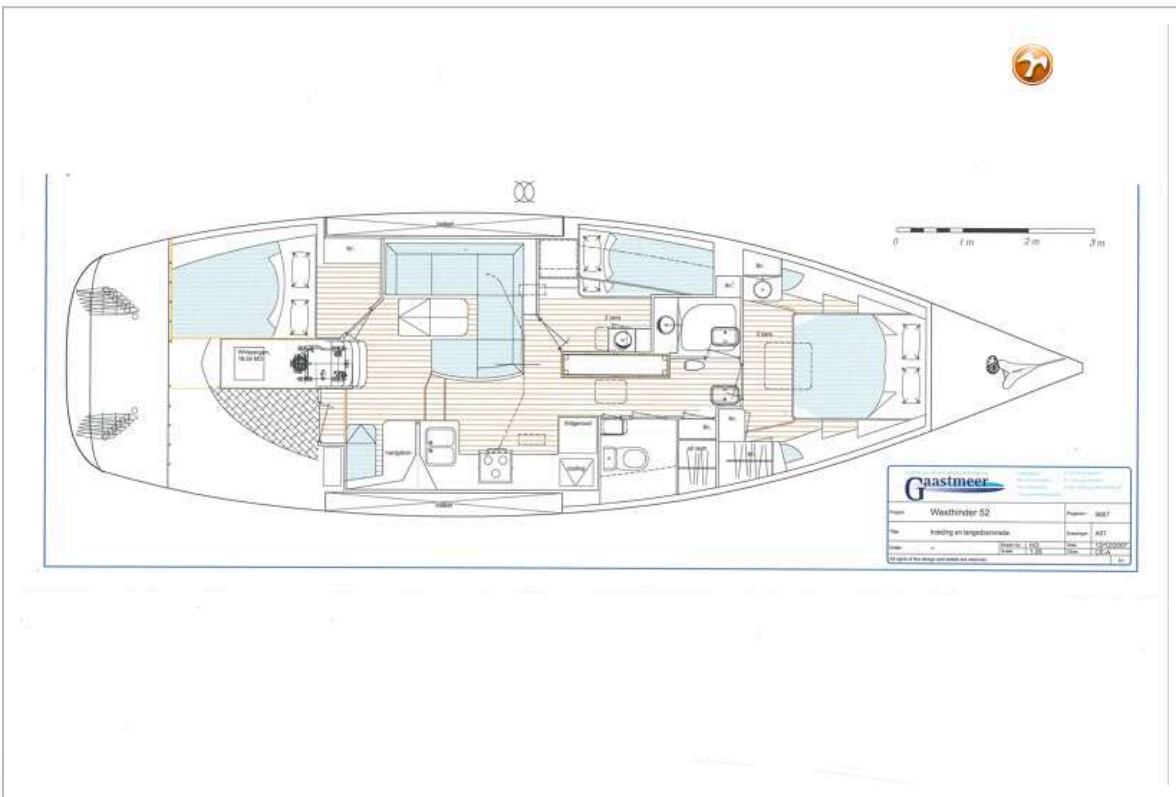


WESTHINDER 52

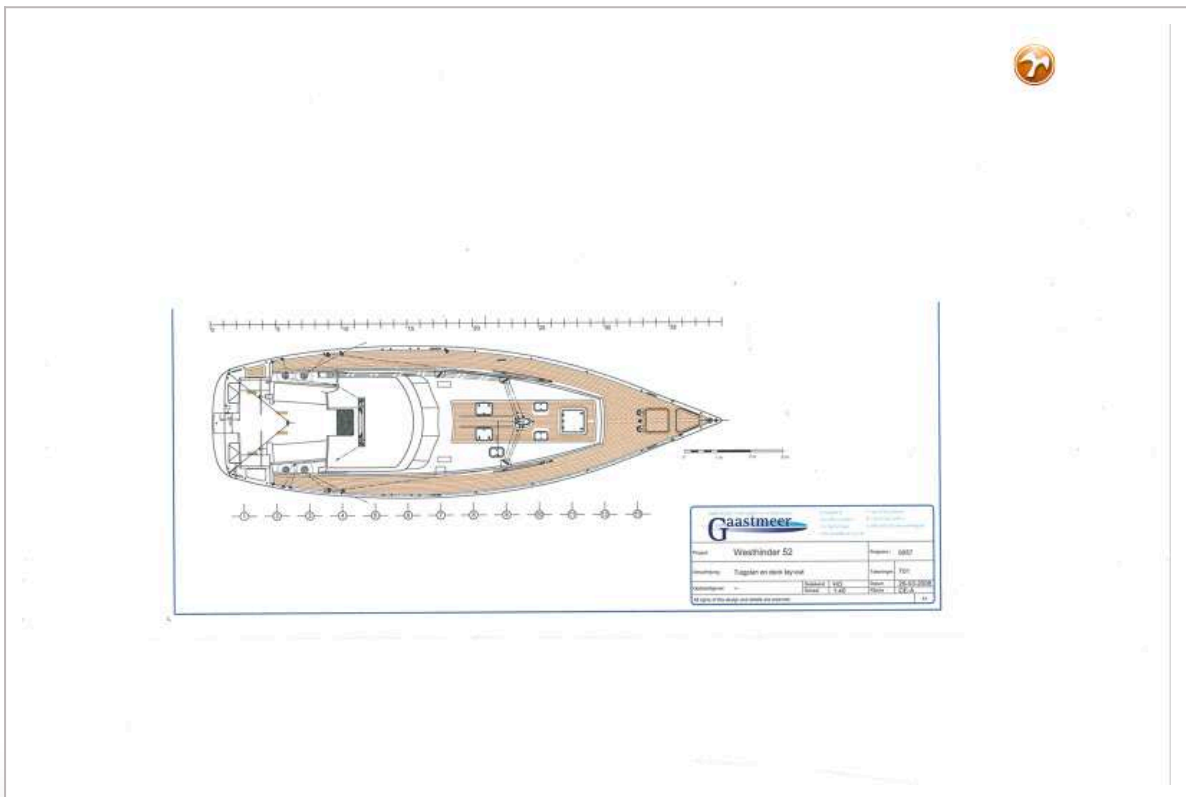




WESTHINDER 52



WESTHINDER 52



WESTHINDER 52

