



## MOODY 54



DE VALK  
YACHT BROKERS

## BROKER'S COMMENTS

One of the most beautiful Moody 54s you'll ever see, immensely strong, and built for confidence at sea. This is a yacht designed without compromise, offering optimum performance and timeless style. Major, extensive refit completed in 2021/2022, including complete ship repaint. Now she's ready to turn heads and take you wherever the wind blows. Designed by the legendary Bill Dixon, she combines performance with elegance. Owners are meticulous to the point where even the teak has a curfew so you know she's been loved !

*Johan Nooitgedagt*

## SPECIFICATIONS

<b>Dimensions</b>	16.72 x 4.85 x 1.80 (m)	<b>Builder</b>	Princess Yachts Plymouth
<b>Built</b>	2003	<b>Cabins</b>	4
<b>Material</b>	GRP	<b>Berths</b>	7
<b>Engine(s)</b>	1 x Yanmar 4HJ3-HTE diesel	<b>Hp/Kw</b>	100.00 (hp), 73.60 (kw)
<b>Asking price</b>	€ 449.500 (VAT Paid)	<b>Lying</b>	elsewhere / Not at sales office

## CONTACT

<b>Sales office</b>	De Valk Hindeloopen B.V.	<b>Telephone</b>	+31 514 52 40 00
<b>Address</b>	Oosterstrand 1 8713 JS Hindeloopen NL	<b>E-mail</b>	hindeloopen@devalk.nl

## DISCLAIMER

These particulars are given in good faith as supplied but cannot be guaranteed.



## GENERAL

Model	MOODY 54
Type	sailing yacht
LOA (m)	16,72
LWL (m)	14,05
Beam (m)	4,85
Draft (m)	1,80
Air draft (m)	23,00
Headroom (m)	2,00
Year built	2003
Launched	2003
Builder	Princess Yachts Plymouth
Country	United Kingdom
Designer	Bill Dixon
Displacement (t)	22
Ballast (tonnes)	lead 6,8 t
CE norm	A
Hull material	GRP
Hull colour	blue
Hull shape	round-bilged
Keel type	fin keel with bulb
Superstructure material	GRP
Rubbing strake	wood
Deck material	GRP
Deck finish	teak
Superstructure deck finish	teak 2021 overhauled
Cockpit deck finish	teak 2021 overhauled 2021   2021 Seats in Easy-Teks
Antifouling (year)	2026
Dorades	6 x Stainless steel
Window frame	All fixed windows, new seals 2021
Window material	polycarbonate



Deckhatch	2021 Lewmar 6x
Fuel tank (litre)	stainless steel 682 ltr.
Level indicator (fuel tank)	yes
Freshwater tank (litre)	polyethylene 1x 955 ltr.& 2021 Aqua Vital water filter system for 95litre
Level indicator (freshwater)	yes
Blackwater tank (litre)	polyethylene 1 x 110 liter & 1 x 160liter
Level indicator (blackwater)	2021 ultra-sone monitoring
Blackwater tank extraction	deck extraction + pump All lines & pipes 2021
Greywater tank (litre)	polyethylene
Wheel steering	cable steering 2014, leather wheel cover renuwed in 2021
Outside helm position	2021 Whitlock reflex pedestal
Emergency tiller	yes
More info on hull	Completely painted in 2021, Lexus 9K3 'Slate Blue'."
More info on paintwork	Not only the hull but also the superstructure has been painted, finished to a high-quality standard.
Extra info	2025 stainless-steel bow-protector on hull
Extra info	2025 anodes

## ACCOMMODATION

Cabins	4
Berths	7
Interior	teak Varnish interior redone 2021
Floor	carpet 2021
Deck saloon	yes
Saloon	2021 All foam upholstery renewed
Headroom saloon (m)	2,0
Heating	diesel ducted hot air Eberspächer
Air-conditioning	reverse cycle airco
Chart table	yes
Aft Cabin	yes
Galley	yes



Countertop	granite
Sink	stainless steel
Cooker	calor gas 2021   Force 10   3 burner
Oven	In cooker
Microwave/oven combi	yes
Fridge	Isotherm
Freezer	Isotherm
Hot water system	220V + engine Eberspächer
Water pressure system	electrical
Crockery	yes
Owners cabin	French bed Stern
Bed length (m)	2.00 m   with 2021 custom Neptune mattresses.
Wardrobe	hanging/drawers/shelves
Bathroom	en suite 2021 electric design radiator for warm towels
Toilet	en suite
Toilet system	vacuum
Wash basin	in the bathroom
Shower	en suite
Guest cabin 1	French bed Bow
Bed length (m)	2.00 m   with 2021 custom Neptune mattresses.
Wardrobe	hanging and shelves
Bathroom	shared
Toilet	shared
Toilet system	vacuum 2021 complete system renewed
Wash basin	in the bathroom
Shower	shared
Guest cabin 2	double bed Centre
Bed length (m)	2,00
Wardrobe	hanging and shelves
Guest cabin 3	single bed Centre
Bed length (m)	2,00
Washing machine	2021 Candy compact



## Extra info

All gas installation pipes were renewed in 2021

## Extra info

The steel window frame of the interior was powder coated again in 2021 during the refit, which the factory never did at the time, and is now much better than ever.

## MACHINERY

No of engines	1
Make	Yanmar
Type	4HJ3-HTE
HP	100
kW	73.60
Fuel	diesel
Year of overhaul	2021
Maximum speed (kn)	9
Cruising speed (kn)	7
Consumption (l/hr)	6
Range (nm)	780
Engine hours	3800
Engine cooling system	freshwater heat exchanger
Drive	shaft
Shaft seal	2021
Engine controls	bowden cable 2021 engine instruments new gauges
Gearbox	mechanical
Bowthruster	electric 10HP Sleipner   Engine 2017 overhauled
Exhaust	dry
Propeller type	feathering Extra spare propeller feathering 3 blade
Propeller blades	3
Propeller shaft material	stainless steel 2021
Shaft lubrication	water
Manual bilge pump	Selectable to engine or bilge
Electric bilge pump	2x automatic
Electrical installation	12 / 24 / 220 volt



<b>Generator</b>	wet exhaust HFL Powergen Generator 8,5 KVA
<b>Running hours generator</b>	Approx. 1650
<b>Start battery</b>	2021   1x AGM
<b>Service battery</b>	2021   8x Ecoline AGM 6 V 450 Ah 900 Ah capacity total
<b>Generator battery</b>	2021 1x AGM
<b>Battery monitor</b>	2021 Victron BMV-702
<b>Battery charger</b>	2021 Victron Bluesmart Charger 12 V 20 A
<b>Battery charger/inverter</b>	2021 2x Victron quattro 24/5000/120
<b>Solar panel</b>	2024 3x panels bifacial 440 Watt
<b>Diode battery combiners</b>	yes
<b>Shorepower</b>	with cable 2021
<b>Insulation transformer</b>	2021 Victron 7000W
<b>Watermaker</b>	Aquafresh   90 L/h needs service

## NAVIGATION

<b>Compass</b>	Plastimo 135
<b>Electric compass</b>	Raymarine
<b>Depth sounder</b>	2021   hull transducers   Data on Raymarine ST60+
<b>Log</b>	2021 transducers   Data on Raymarine ST60+
<b>Windset</b>	2021 masthead-unit   Data on Raymarine ST60+
<b>VHF</b>	2021 new cable and antenna   Raymarine
<b>VHF handheld</b>	Icom
<b>Autopilot</b>	Raymarine ST6001   2021 raymarine P70 on pedestal with remote
<b>Rudder angle indicator</b>	On Raymarine ST6001 autopilot
<b>Radar</b>	2021 Raymarine Quantum Q24D
<b>Plotter</b>	2021 Raymarine axiom 9" on steering pedestal
<b>Radar/GPS/plotter</b>	2023 Raymarine 2023 axiom 12" entrance cockpit.
<b>Wifi antenna</b>	Iridium Go
<b>Electronic chart(s)</b>	Europe 2023
<b>AIS transceiver</b>	2021 Raymarine AIS 700



EPIRB	2024
Navigation lights	2021 All Led's

## EQUIPMENT

Fixed windscreen	All glass was renewed in 2021.
Sprayhood with grab rail	2024
Cockpit cover	2024
Bimini	2024
Window cover	UV protecion 2022
Cockpit cushions	yes
Cockpit table	yes
Bathing platform	Electric / hydraulic
Boarding ladder	stainless steel
Gangway	2024
Deck shower	Fresh and Salt
Anchor	CQR Plough 27 kg Stainless steel
Anchor chain	80m / 13mm with maxwell stopper
Anchor 2	Bruce
Anchor chain	Lead rope
Windlass	electrical 2024 Lewmar with capstan
Dinghy	rigid hull Avon 3.4 with cover
Outboard	2024 Yamaha 25 hp
Davits	stainless steel Cooney 300 KG
Davits controls	electrical
Sea railing	wire
Grab rail (superstructure)	teak
Railing side opening gates	yes
Pushpit	yes
Pulpit	yes
Life raft	container 2020   ORC Cruiser   6 pers.
Life raft (pers)	container 6





Last life raft survey	2024
Lifebuoy	yes
Danbuoy	2024
Safety lines on deck	yes
Rope cutter	yes
Radar reflector	Seame active radar reflector
Fenders	yes
Mooring lines	2021
Spare parts	yes
Tools	yes
TV	2021 Sony smart tv
Radio	2022 Fusion MS-RA770 with double amplifier
Cockpit speakers	2022
Speakers in salon	2022
Speakers in cabin	2022
Clock - barometer	Wempe
Fire extinguisher	2021   4x Dry powder
Extinguisher in engine room	Automatic
Auto extinguisher system	yes
Extra info	yes

## RIGGING

Rigging	sloop-cutter 2021
Standing rigging	wire 2021
Brand mast	Seldén
Material mast	aluminium
Spreaders	Triple pair
Keel stepped mast	yes
Mainsail	2022 UK-Sails Cross-cut Dyneema 57m² vertical battens
Stoway mast	Overhauled 2021
Genoa	2022 UK-sails Cross-cut



Genoa furler	2021 electric
Genoa cover	2022
Gennaker	2010 With snuffer, hardly used
Staysail	2022 UK-sails Cross-cut   with cover
Staysail furler	Furlex 400s
Yankee	2022 Furling UK-sails Cross-cut 77m² o
Self tacking jib installation	2022 Furling self tacking, (Nautosphere Voyager) vertical batten
Reefing System	quick-one-line-reefing
Boomvang	gasspring
Primary sheet winch	Lewmar 1x 46 CST electric
Genoa sheetwinches	Lewmar 2x 64 CST electric
Reefing winch	Lewmar selftailing 3x
Multifunctional winches	Lewmar selftailing 2x
Winchcovers	yes
Spi-pole	aluminium
Extra info	The mast was completely professionally refitted in 2021
Extra info	As part of the extensive refit in 2021, the mast was fitted with additional diamond rigging. This upgrade contributes to a noticeably more stable mast and provides extra confidence under sail, even in challenging conditions.

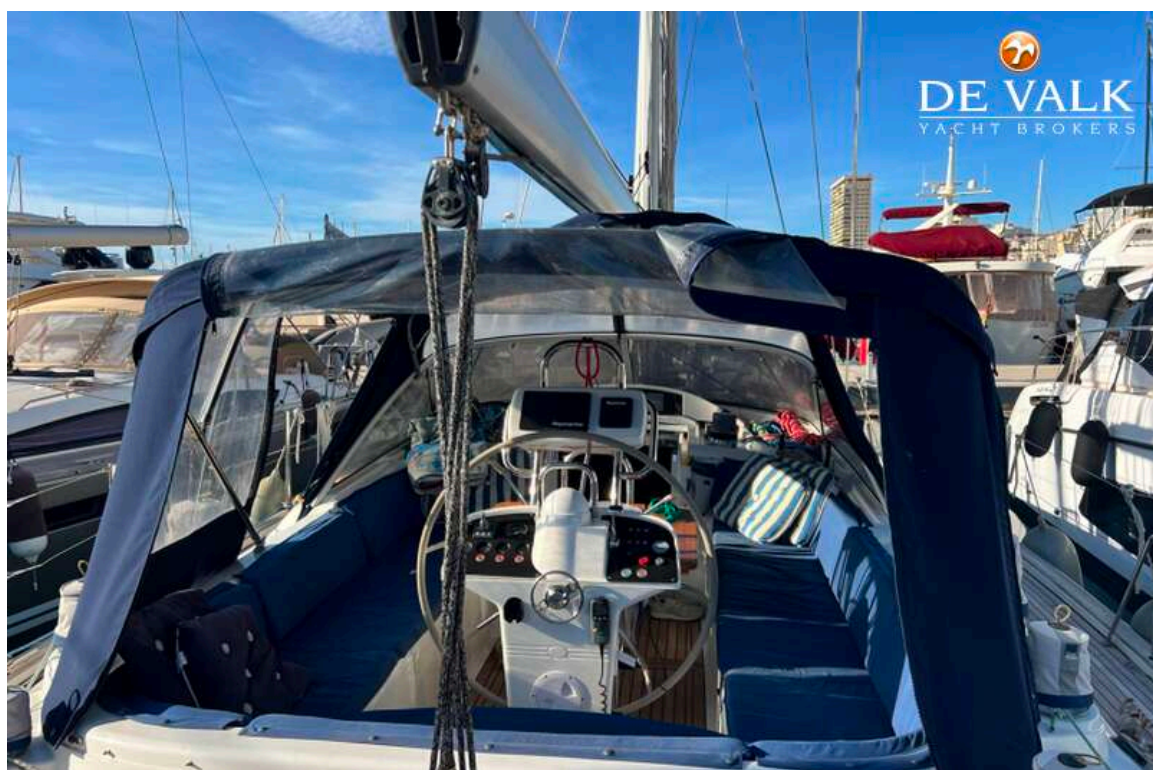


# MOODY 54





# MOODY 54





# MOODY 54





# MOODY 54



# MOODY 54





# MOODY 54

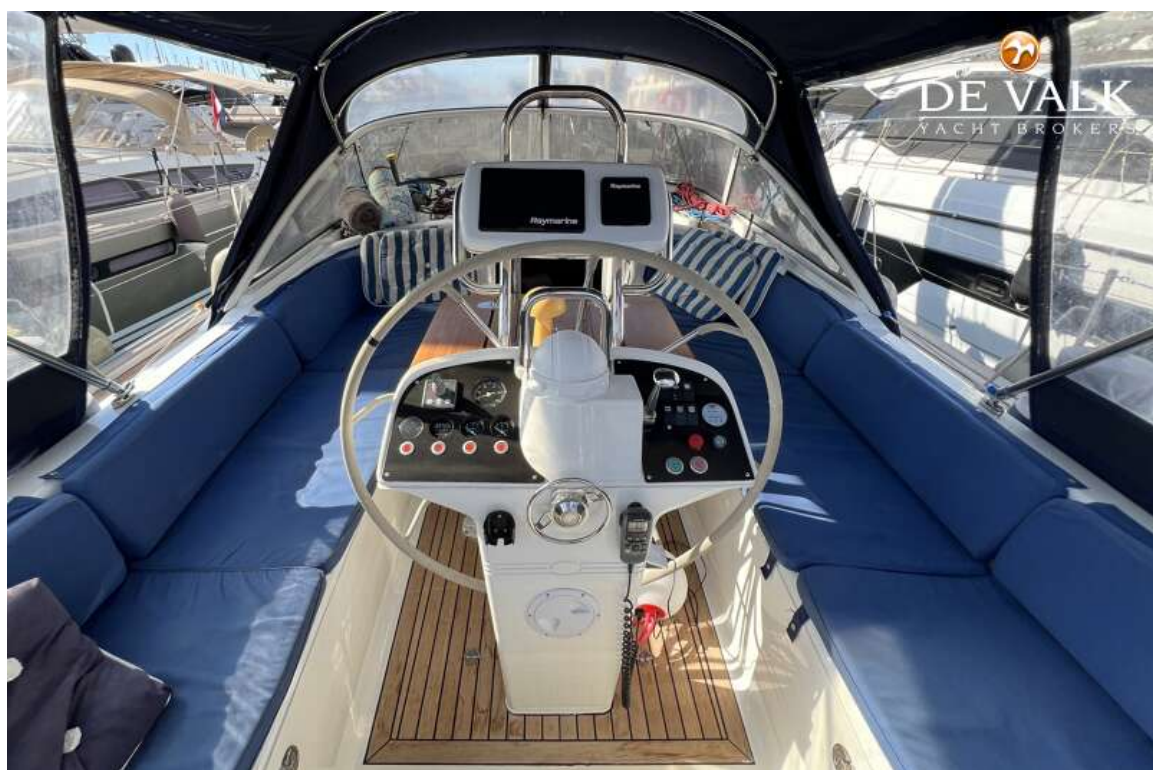




# MOODY 54



# MOODY 54





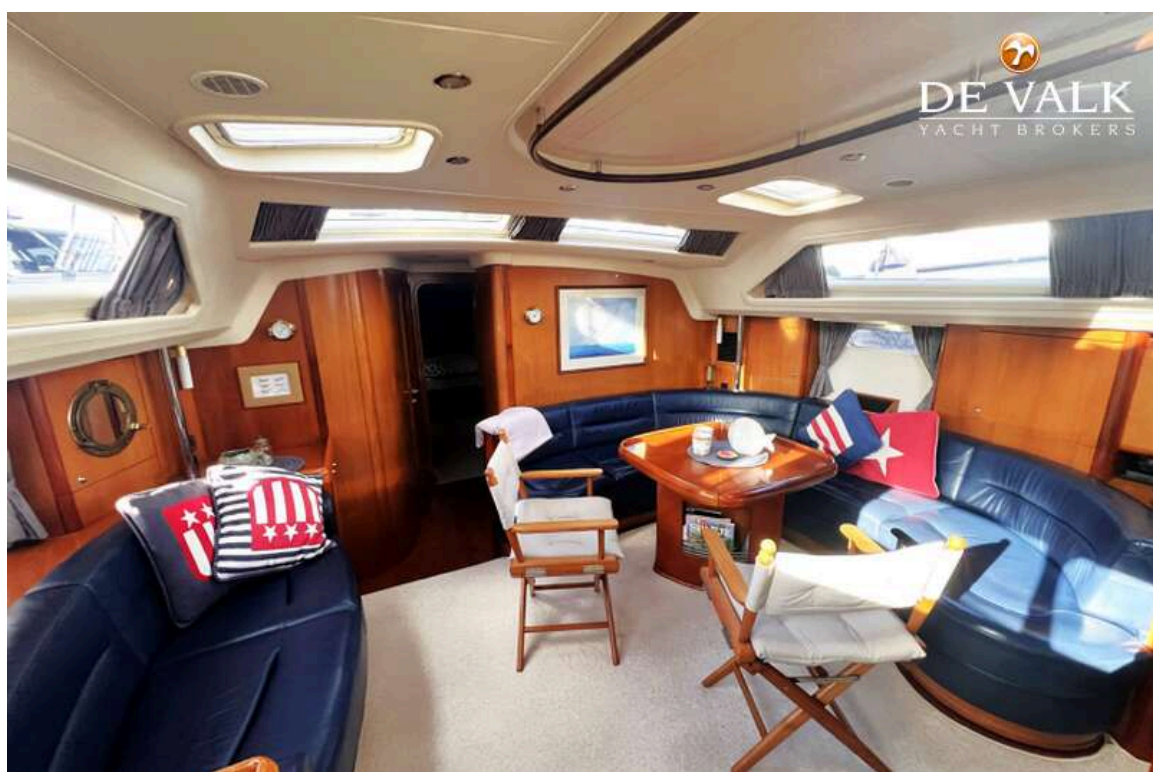


# MOODY 54

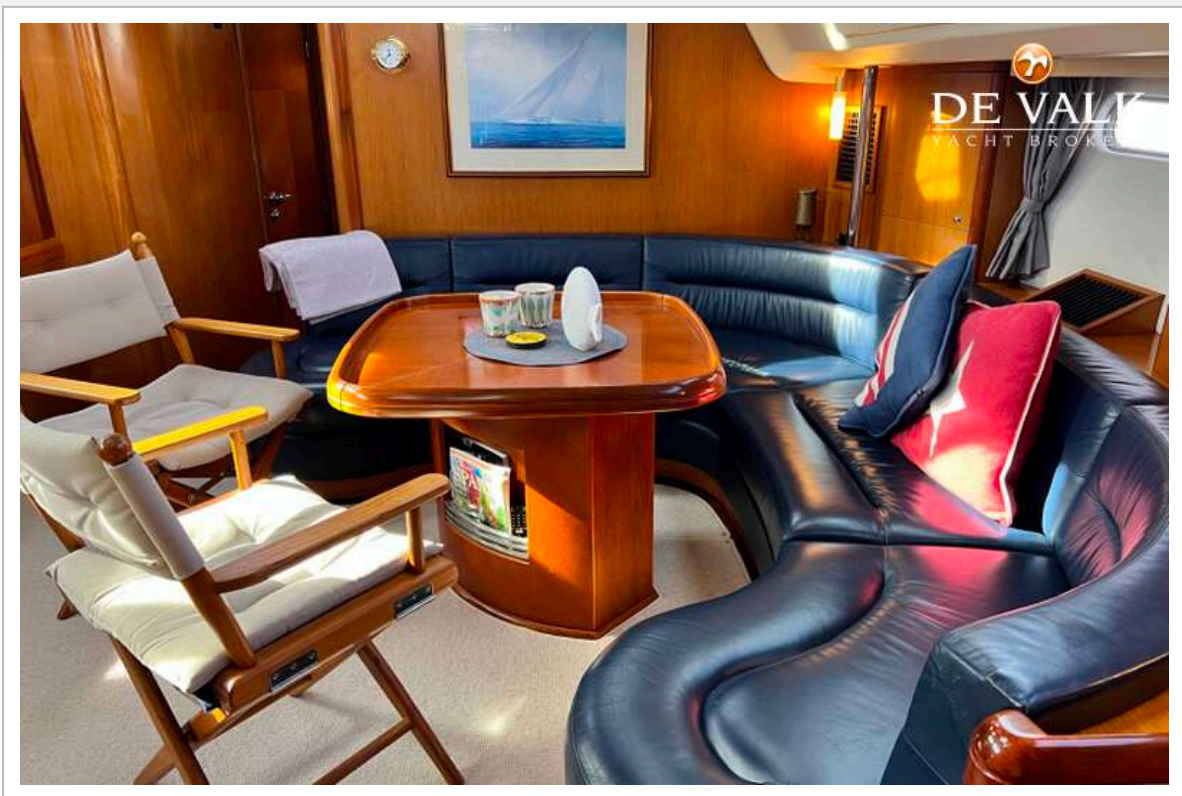




# MOODY 54



# MOODY 54

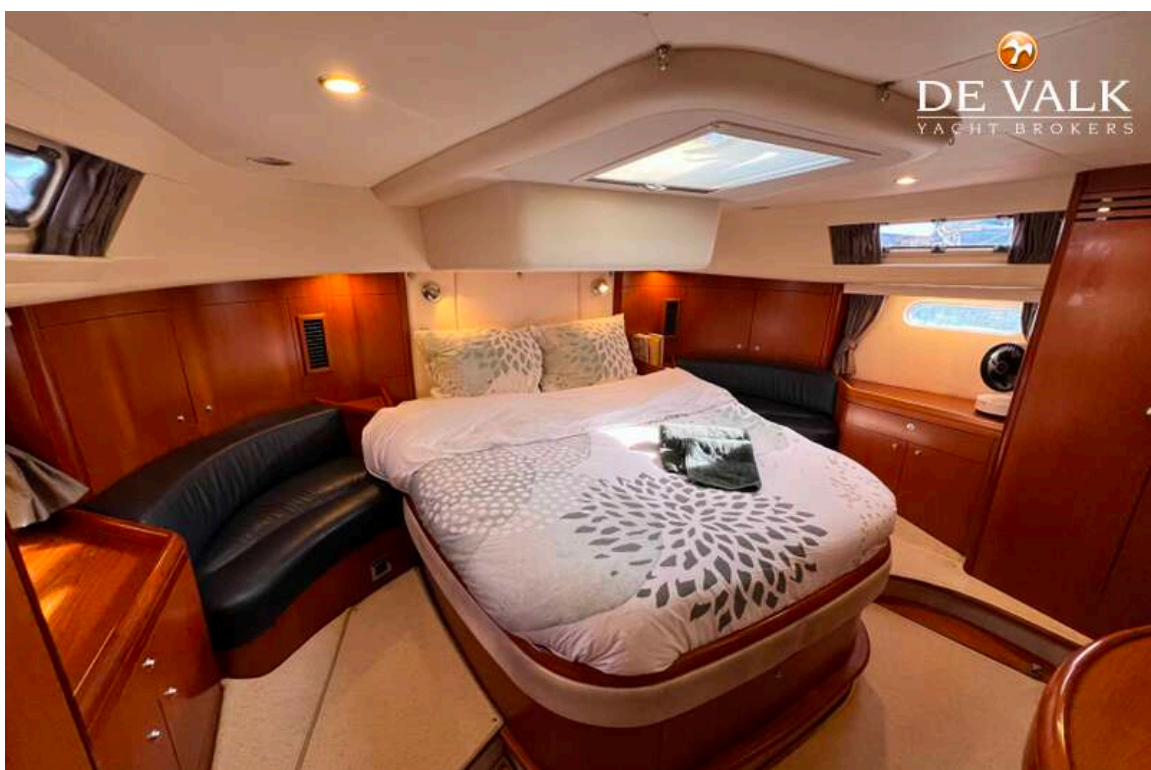




# MOODY 54

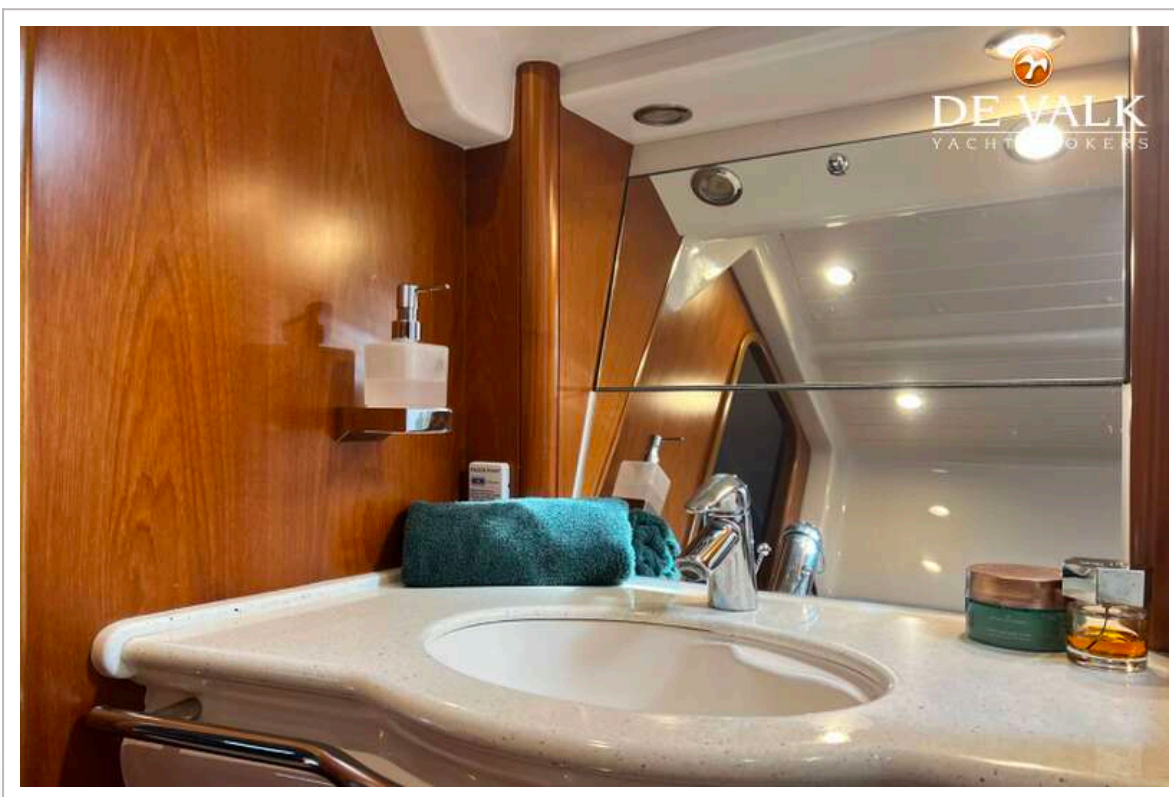


# MOODY 54

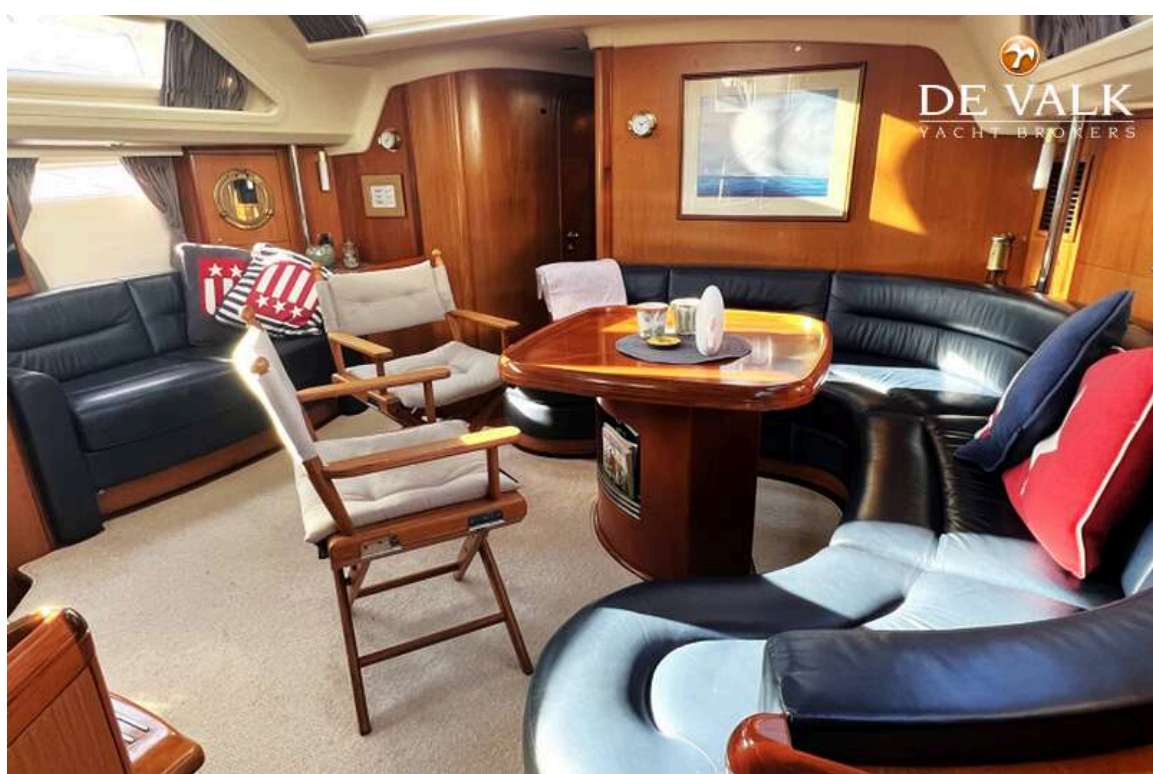




# MOODY 54

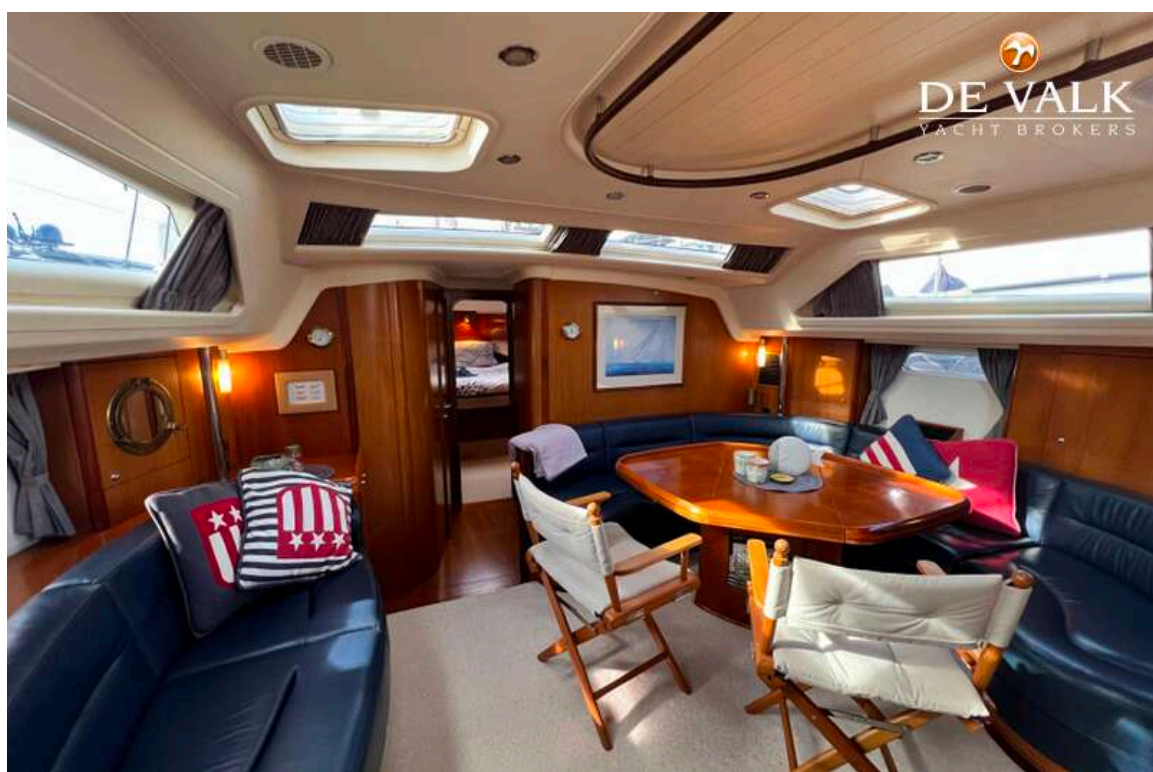


## MOODY 54

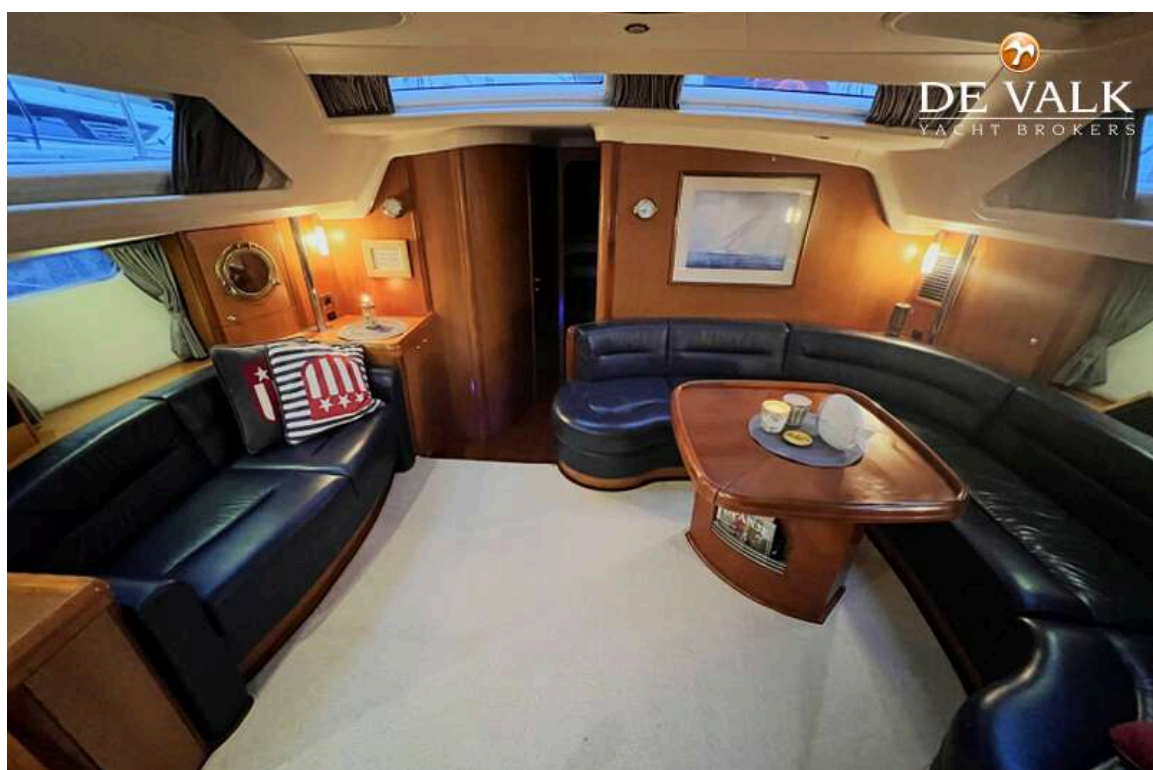




# MOODY 54



# MOODY 54





# MOODY 54

