



HEESEN 42 M

BROKER'S COMMENTS

This luxury Heesen superyacht refitted 2014, offers a wealth of convivial spaces, perfect for luxury cruising, with ample opportunities to relax and enjoy the water on the yacht's array of water toys. The yacht offers guest accommodation for up to 12 guests in 5 suites comprising a master suite, two double cabins, and two twin cabins. You can enjoy a variety of experiences onboard, notably a large deck jacuzzi on one of the 3 decks, 2 large salons, a sky bar, and much more. She benefits from a semi-displacement aluminium hull providing exceptional seakeeping and comfort. Base in Barcelona.

Tue Simon Fasting

SPECIFICATIONS

Dimensions	42.09 x 7.60 x 2.76 (m)	Builder	Heesen
Built	1994	Cabins	5
Material	Aluminium	Berths	12
Engine(s)	2 x MTU M70 4000 8V diesel	Hp/Kw	2 x 1,555.00 (hp), 1,144.48 (kw)
Asking price	€ 7.500.000 (VAT Not paid)	Lying	at sales office

CONTACT

Sales office	De Valk Barcelona	Telephone	+34 932 202 825
Address	Barcelona region 08392 Barcelona ES	E-mail	barcelona@devalk.nl

DISCLAIMER

These particulars are given in good faith as supplied but cannot be guaranteed.



GENERAL

Model	HEESEN 42 M
Type	motor yacht
LOA (m)	42,09
Beam (m)	7,60
Draft (m)	2,76
Year built	1994
Launched	Re-launched in 2014 after a complete refit
Builder	Heesen
Country	The Netherlands
Designer	Azure Naval Architects
Displacement (t)	95
Gross tonnage	318
Hull material	aluminium
Superstructure material	aluminium
Deck material	aluminium
Deck finish	teak
Window frame	stainless steel
Window material	tempered glass
Insulation	rockwool
Flybridge	yes
Fuel tank (litre)	4 tanks and 1 day tank total 50,675
Level indicator (fuel tank)	yes
Freshwater tank (litre)	5570
Level indicator (freshwater)	yes
Blackwater tank (litre)	1000
Level indicator (blackwater)	yes
Blackwater tank extraction	pump
Greywater tank (litre)	1500
Level indicator (greywater)	yes
Wheel steering	electric



Flybridge helm position	yes
More info on paintwork	Awl Grip - well kept
Extra info	Diaship / Mulder design
Extra info	Refitted by Pastrovich Studio Monaco in 2014

ACCOMMODATION

Cabins	5
Berths	12
Crew cabin	3 + 1 Captains cabin next to the bridge
Crew berths	8
Interior	yes
Saloon	Samsung 70" + apple TV
Heating	yes
Air-conditioning	reverse cycle airco Marine Air System
Navigation center	yes
Chart table	yes
Galley	Large U-shaped midship between crew and main salon
Sink	stainless steel
Cooker	Electrolux induction
Oven	Miele extra large and Balay steam oven
Extractor	yes
Microwave	yes
Fridge	2 X Miele
Freezer	yes
Wine cooler	yes
Hot water system	220V
Water pressure system	electrical
Dishwasher	Bosch
Kettle	yes
Ice maker	yes
Coffee maker	yes



Crockery	yes
Waste compactor	yes
Owners cabin	double bed Main deck forward
Bed length (m)	King size
Wardrobe	walk-in closet
Bathroom	en suite
Shower	yes
Bath tub	yes
Jacuzzi	yes
Guest cabin 1	double bed King size
Wardrobe	hanging/drawers/shelves
Bathroom	en suite
Shower	yes
Bath tub	yes
Guest cabin 2	double bed King size
Wardrobe	hanging/drawers/shelves
Bathroom	en suite
Guest cabin 3	twin single
Wardrobe	hanging/drawers/shelves
Bathroom	En suite
Guest cabin 4	double bed King size
Wardrobe	hanging/drawers/shelves
Crew cabin(s)	4
Bathroom (crew)	4
Toilet system	electric
Shower (crew)	4
Washing machine	3 X Miele
Dryer	3 X Miele
Central vacuum cleaner	yes
Sky lounge	Samsung 85" + game entertainment center + TV box
Wet bar	yes
Tender garage	yes



MACHINERY

No of engines	2
Make	MTU
Type	M70 4000 8V
HP	1555
kW	1144.48
Fuel	diesel
Year of overhaul	2014
Maximum speed (kn)	17
Cruising speed (kn)	12
Engine cooling system	freshwater heat exchanger
Engine controls	electrical
Bowthruster	hydraulic Hydromatik GmbH (Ulm, Donau)
Gearbox	ZF
Exhaust	watercooled
Propeller blades	4
Propeller shaft material	stainless steel
Shaft lubrication	water
Electric bilge pump	yes
Bilge alarm	yes
Generator	Northern Lights 90 KW 220/380 Volt
Generator 2	Northern Lights 90 KW 220/380 Volt
Start battery	New 2025
Service battery	New 2025
Generator battery	yes
Battery monitor	yes
Battery charger	yes
Inverter	yes
Battery charger/inverter	yes
Shorepower	with cable 380 V
Watermaker	H.E.M.



Stabilizers

0-speed Quantum

NAVIGATION

Compass

yes

Compass on flybridge

yes

Electric compass

yes

Multi control display

yes

Depth sounder

Furuno FE 700

Log

Furuno DS80

VHF

GMDSS - SAT - MF/HF/DSC Lars Thrane

VHF handheld

Sailor (Thrane & Thrane) – Handset for Sailor VHF (6200/6300 ser

Autopilot

Simrad – AP50

Rudder angle indicator

yes

Radar

Northrop Grumman Sperry Marine – 65810WAR-6G -10 kW
Turning Unit

GPS

2 X Furuno GP 150

Plotter

yes

Navtex

yes

Electronic chart(s)

yes

AIS transponder

Furuno – FA-150

EPIRB

yes

Searchlight

yes

Extra info

Emergency system Kaiser K-IMS (Integrated Monitoring System)

Extra info

The entire navigation system replaced January -March 2026

EQUIPMENT

Transom door

yes

Gangway

Opecmare hydraulic

Life raft

container 2

Lifejackets

yes



Tools	yes
Alarm system	yes
Fire extinguisher	yes
Extinguisher in engine room	FM-200 + Co2
Auto extinguisher system	yes
Extra info	Tempest 900 (9m) Engine YAMAHA "XTO Offshore 400h/p" v8
Extra info	Full diving equipment, Kayak, wake boards,
Extra info	Jetski Sea Doo RXT X RS + Kawasaki 150 + Seabob + water skies



HEESEN 42 M



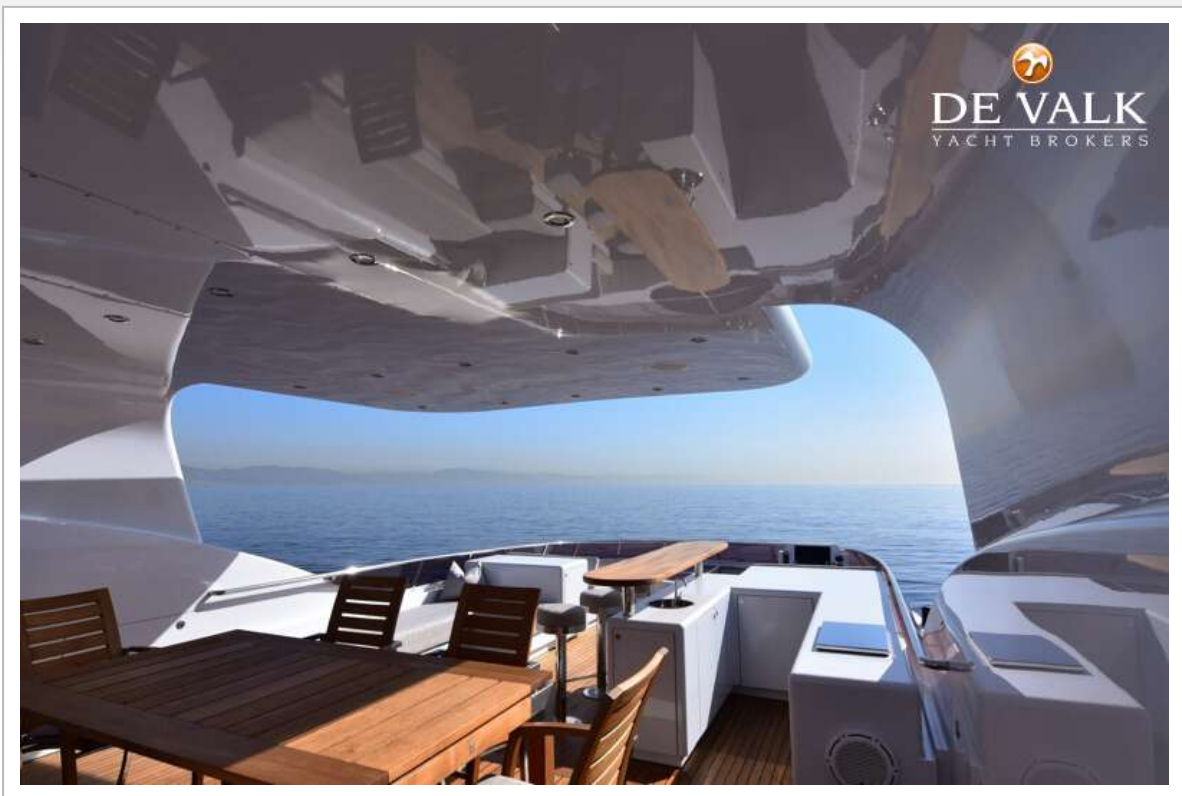
HEESEN 42 M



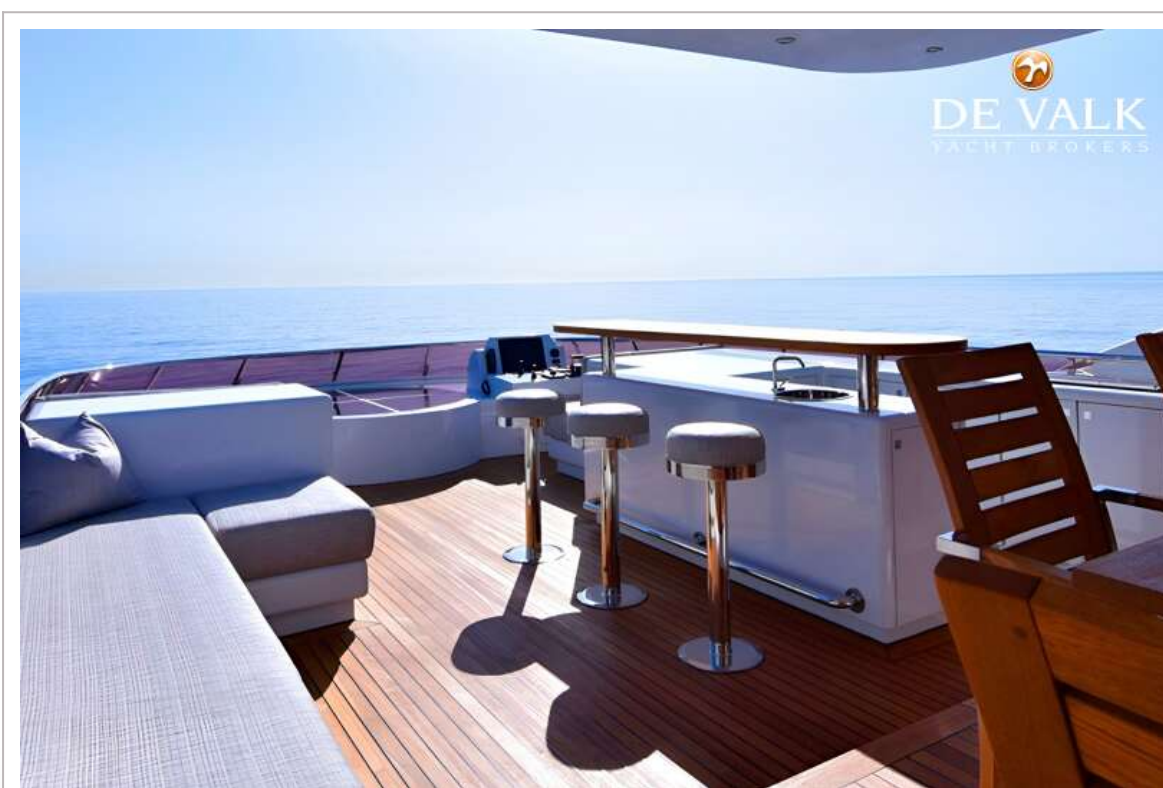
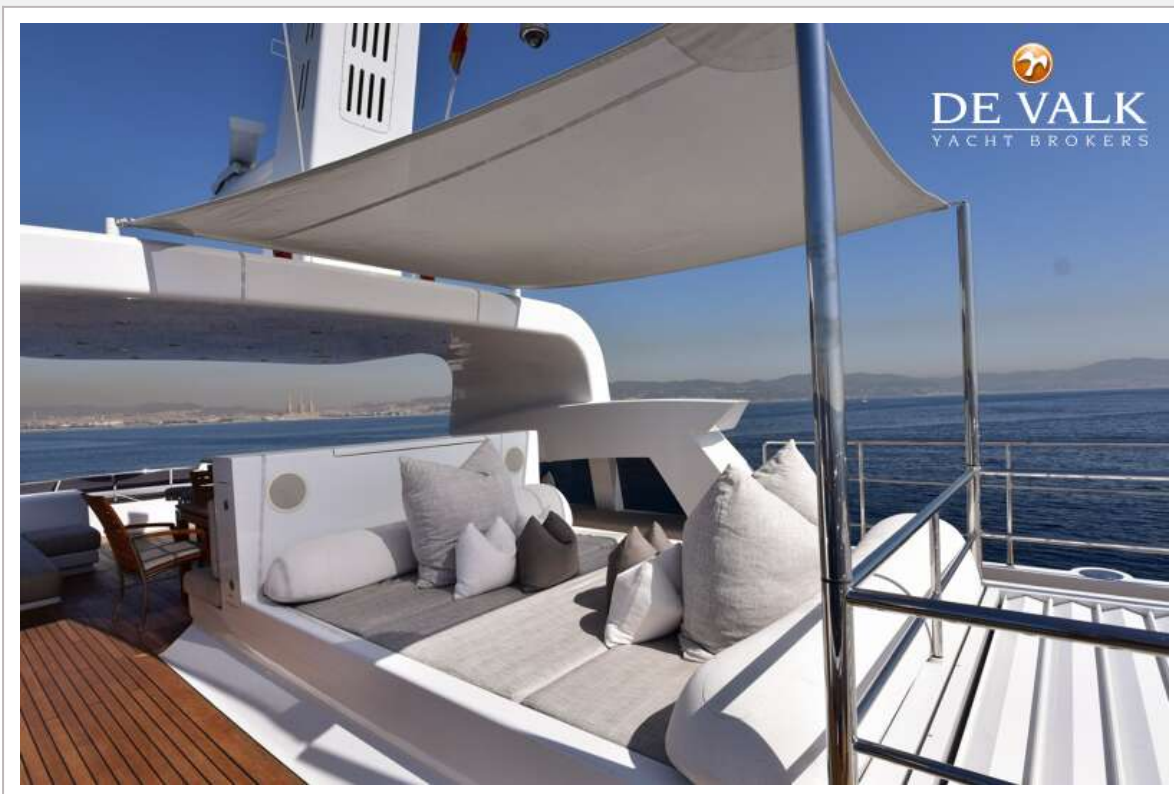
HEESEN 42 M



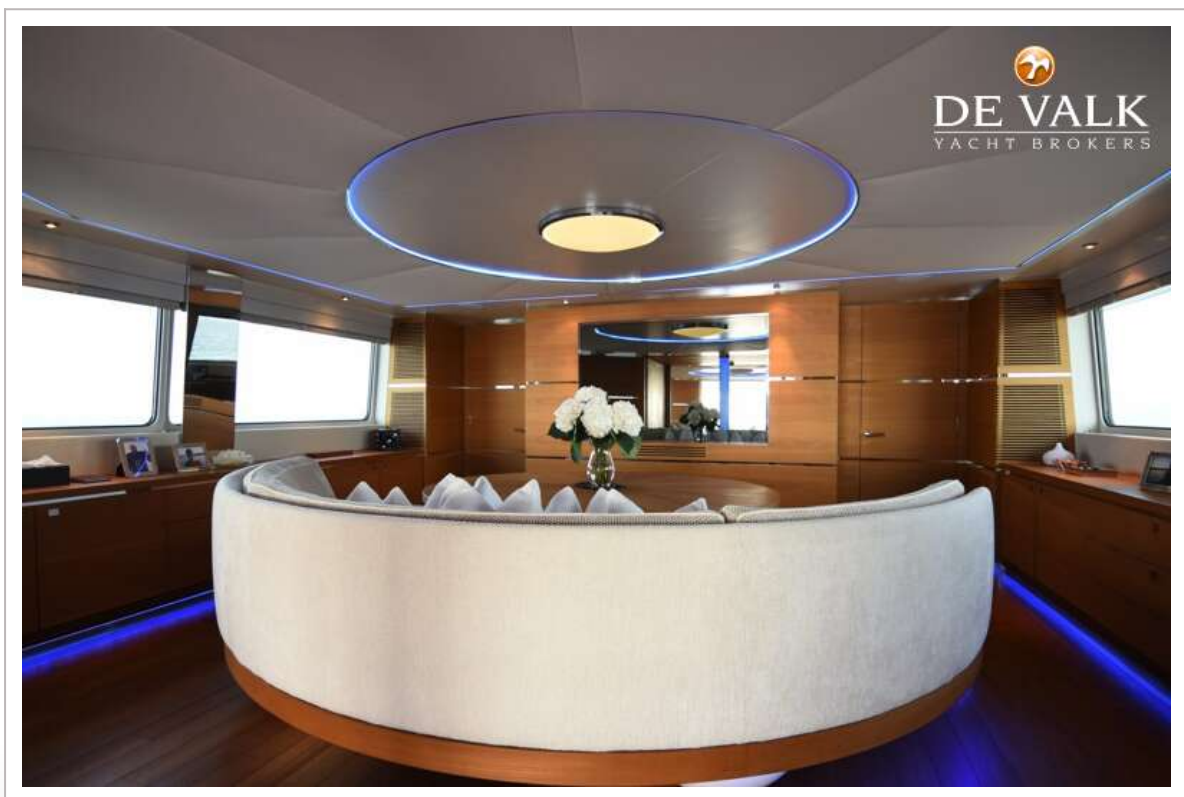
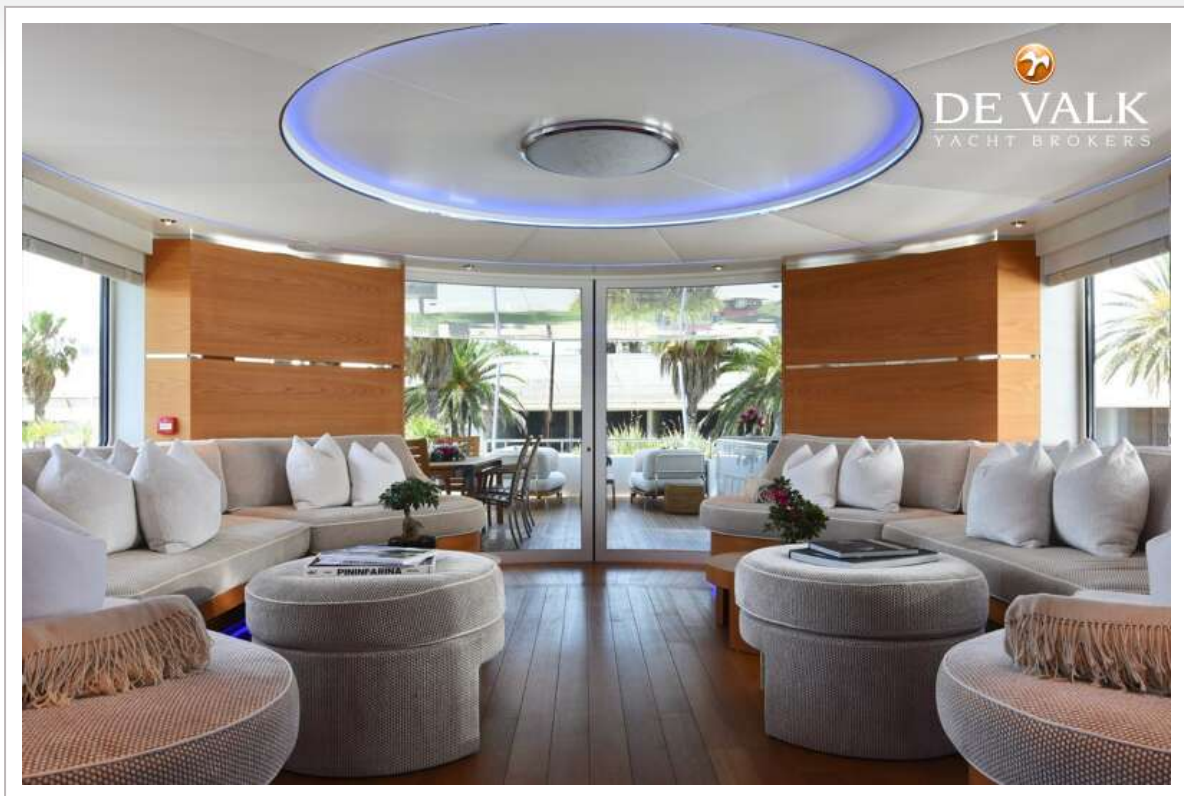
HEESEN 42 M



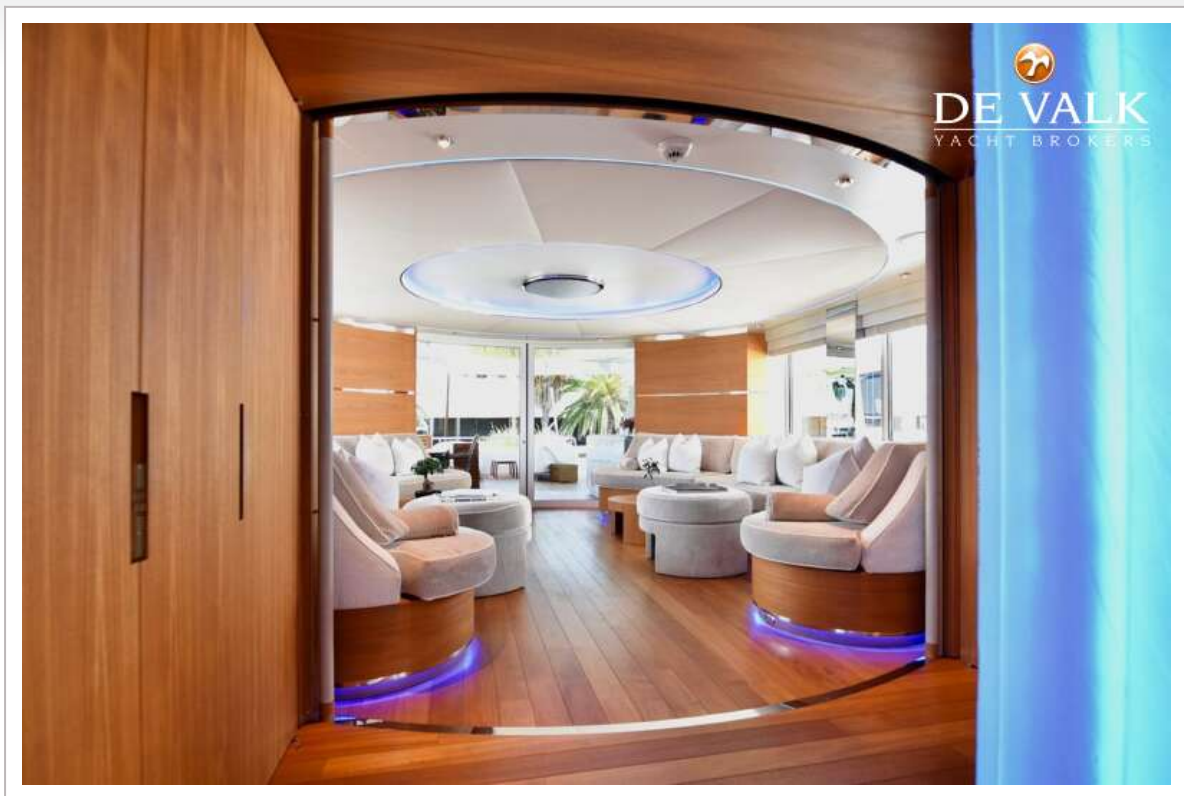
HEESEN 42 M



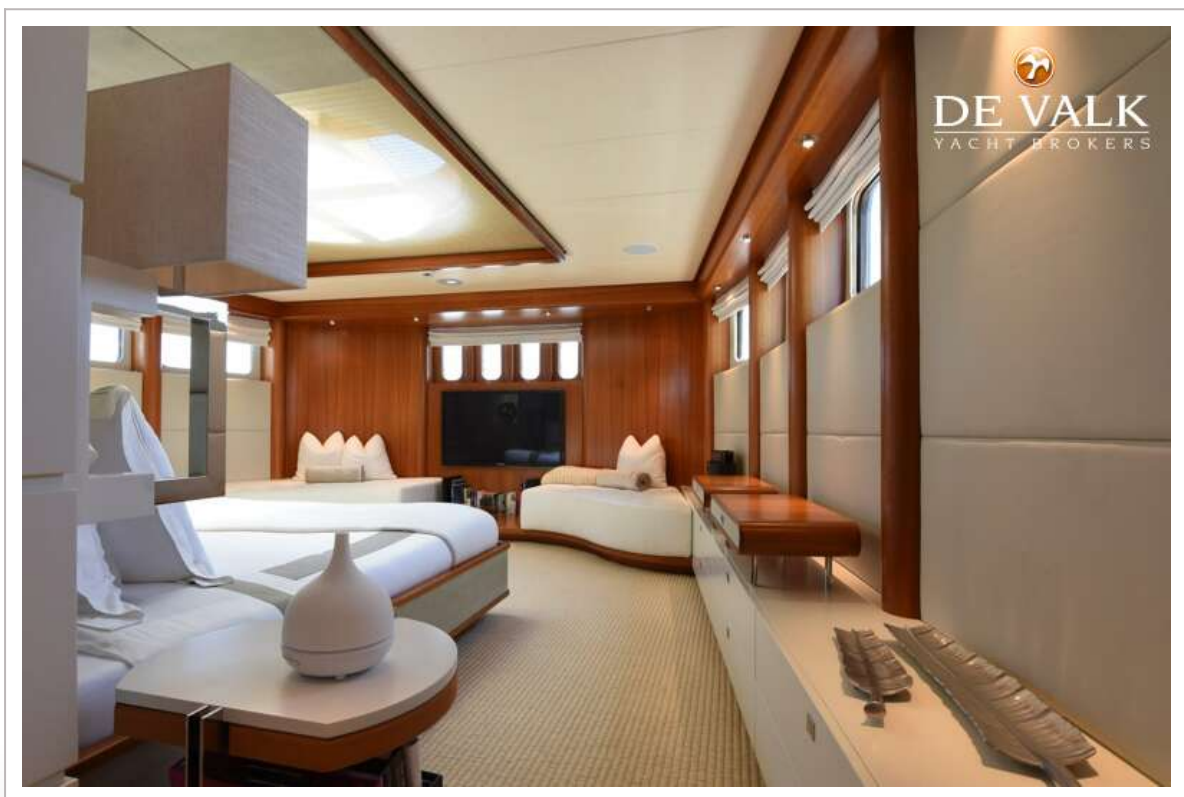
HEESEN 42 M



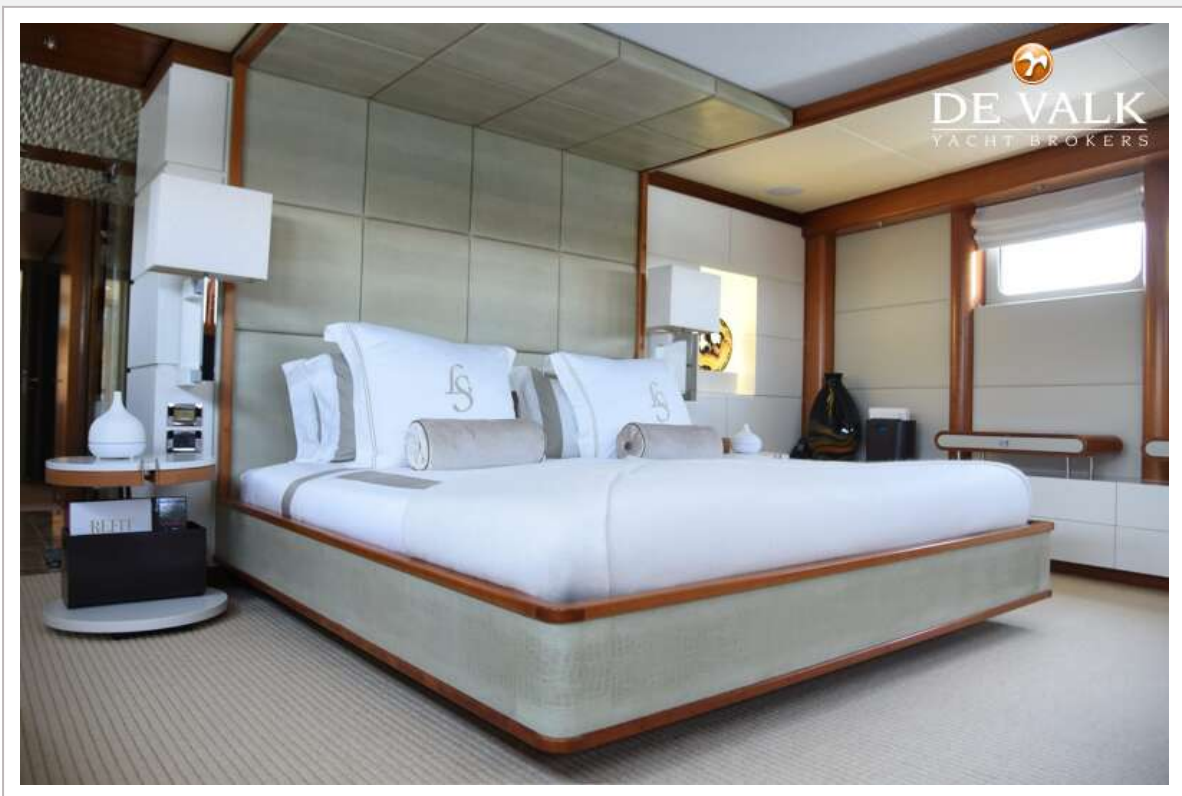
HEESEN 42 M

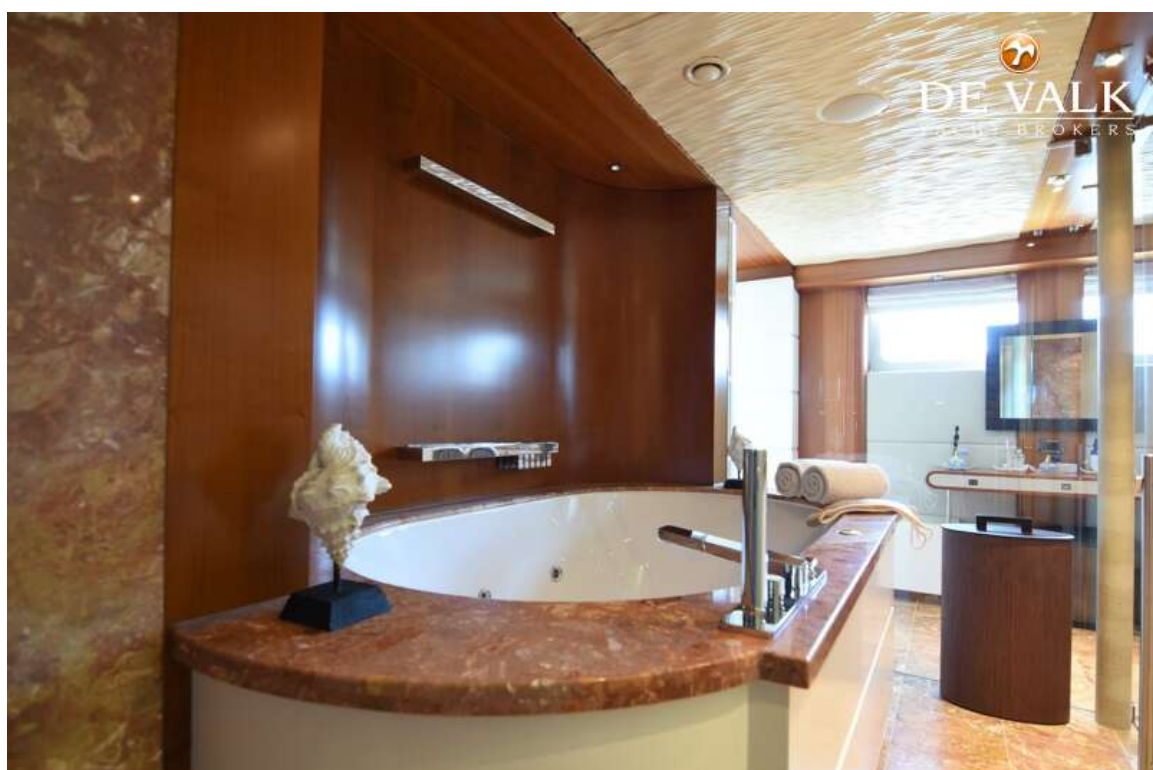


HEESEN 42 M

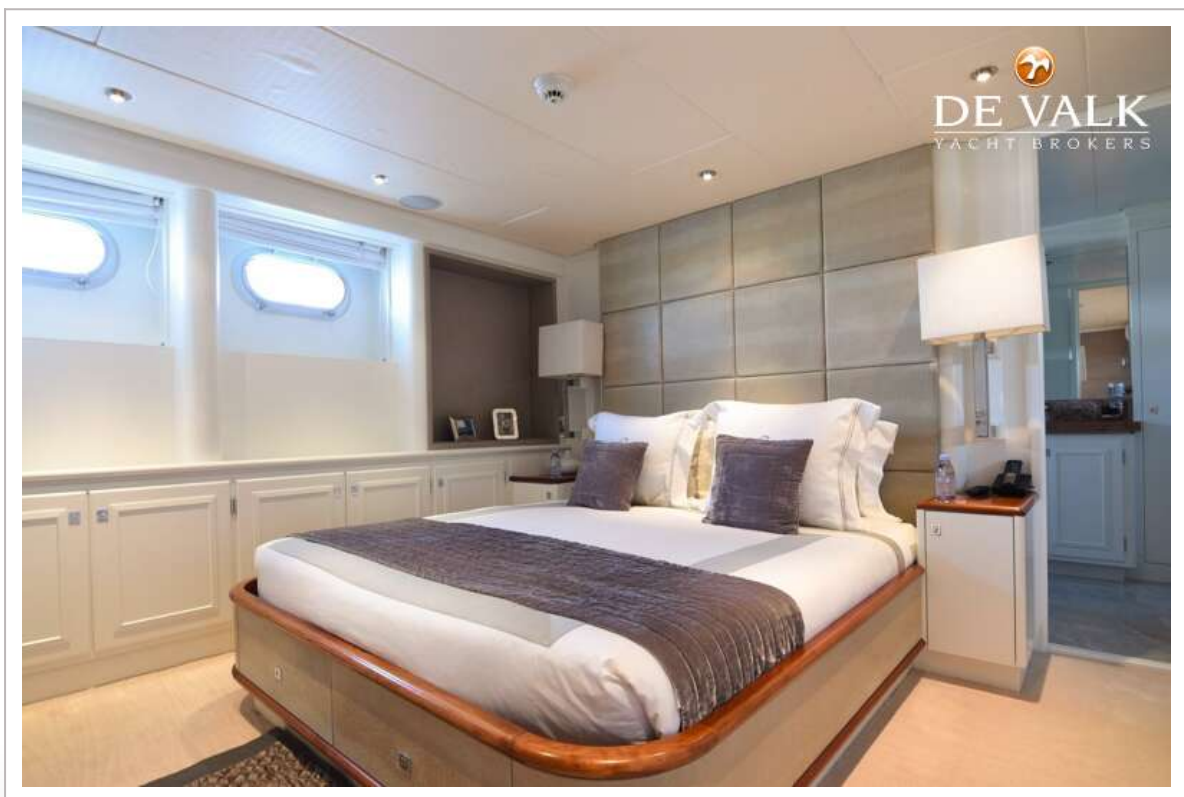


HEESEN 42 M

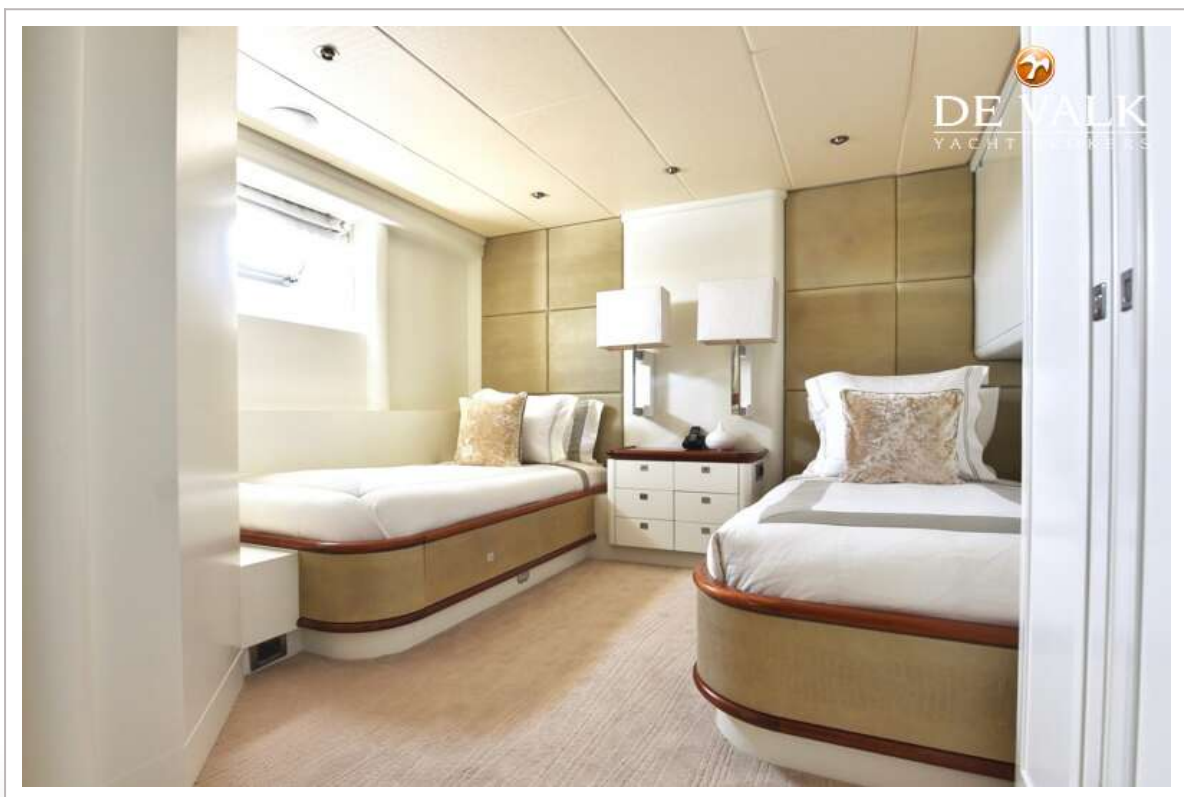




HEESEN 42 M



HEESEN 42 M



HEESEN 42 M

