



DE VALK
YACHT BROKERS



SUPER VAN CRAFT 14.40 BAKDEKKER



DE VALK
YACHT BROKERS

SUPER VAN CRAFT 14.40 BAKDEKKER

BROKER'S COMMENTS

This Super Van Craft 14.40 Bakdekker (1967) is a beautifully maintained classic built by the renowned Klaassen yard. With her elegant lines, steel hull, and mahogany superstructure, she exudes timeless class. Powered by a reliable Volvo Penta D67c (121 hp), fitted with a new bow thruster (2023), and recently serviced engine and electrical systems. Two comfortable cabins, modern amenities such as a dishwasher and washing machine, and a warm, classic interior make this yacht perfect for stylish cruising. A unique opportunity for true classic yacht enthusiasts.

Ian Pols

SPECIFICATIONS

| | | | |
|---------------------|-----------------------------|----------------|-------------------------|
| Dimensions | 13.80 x 3.80 x 1.30 (m) | Builder | Klaassen |
| Built | 1967 | Cabins | 2 |
| Material | Steel | Berths | 6 |
| Engine(s) | 1 x Volvo Penta D67c diesel | Hp/Kw | 121.00 (hp), 89.06 (kw) |
| Asking price | € 89.500 (VAT Exempt) | Lying | at sales office |

CONTACT

| | | | |
|---------------------|--|------------------|------------------|
| Sales office | De Valk Altena | Telephone | +31 162 727211 |
| Address | Keizersveer 3A 4941 TA Raamsdonksveer NL | E-mail | altena@devalk.nl |

DISCLAIMER

These particulars are given in good faith as supplied but cannot be guaranteed.



SUPER VAN CRAFT 14.40 BAKDEKKER

GENERAL

| | |
|------------------------------|----------------------------------|
| Model | SUPER VAN CRAFT 14.40 BAKDEKKER |
| Type | motor yacht |
| LOA (m) | 13,80 |
| Beam (m) | 3,80 |
| Draft (m) | 1,30 |
| Air draft (m) | 4,80 |
| Air draft min (m) | 3,40 |
| Year built | 1967 |
| Builder | Klaassen |
| Country | The Netherlands |
| Displacement (t) | 22 |
| CE norm | NA |
| Hull material | steel |
| Hull colour | white Den IJssel 2017 |
| Superstructure material | mahogany |
| Deck material | steel |
| Deck finish | teak Staat momenteel in de Semco |
| Window material | glass |
| Fuel tank (litre) | 1200 |
| Level indicator (fuel tank) | yes |
| Freshwater tank (litre) | 1200 |
| Level indicator (freshwater) | yes |
| Inside helm position | yes |
| Outside helm position | yes |
| Extra info | Nieuwe anodes 2023 |

ACCOMMODATION

| | |
|---------------------|------|
| Cabins | 2 |
| Berths | 6 |
| Headroom saloon (m) | 2,10 |



SUPER VAN CRAFT 14.40 BAKDEKKER

| | |
|-----------------------|---|
| Sliding roof | manual |
| Dinette | yes |
| Galley | yes |
| Cooker | calor gas 4 pits |
| Fridge | 220V en gas |
| Freezer | In koelkast |
| Hot water system | geyser on Calor Gas Valliant |
| Water pressure system | electrical |
| Dishwasher | yes |
| Owners cabin | double bed + single bed Matrassen uit 2020 |
| Bed length (m) | Bed SB ca. 1,30 x 2,00 m & BB ca. 0,8 x 2,00 m |
| Bathroom | en suite |
| Toilet | yes |
| Toilet system | electric 24V |
| Wash basin | yes |
| Shower | yes |
| Guest cabin 1 | Stapelbed + enkel bed (matrassen uit 2024) |
| Bed length (m) | Onderin zijn ca. 0,80 x 2,10 m & bovenin is ca. 1,10 x 2,20 m |
| Wardrobe | drawers and shelves |
| Washing machine | Niet aanwezig, maar de aansluitingen wel. |

MACHINERY

| | |
|-----------------------|--------------------------------------|
| No of engines | 1 |
| Make | Volvo Penta |
| Type | D67c |
| HP | 121 |
| kW | 89.06 |
| Fuel | diesel |
| Year of overhaul | 1995 na revisie ca. 5065 uur gelopen |
| Engine cooling system | Jabsco impeller koelwaterpomp |
| Drive | shaft |



SUPER VAN CRAFT 14.40 BAKDEKKER

| | |
|---------------------------------|--|
| Gearbox | Paragon Velvetdrive |
| Bowthruster | electric Duco 2023 |
| Propeller type | fixed |
| Shaft lubrication | grease |
| Manual bilge pump | Vaste aanzuig in impeller systeem |
| Electric bilge pump | Jabsco |
| Electrical installation | 12V, 24V & 220V incl. Meterkast met automatische groepen |
| Generator | Ruggerini RM90 5KW (1995) |
| Start battery | 2x 180 Ah (2023) |
| Service battery | 2x 230 Ah (220) |
| Generator battery | 1x 90 Ah (2020) |
| Bowthruster battery | Aangesloten op startaccu |
| Battery monitor | Victron BMV-6025 |
| Battery charger/inverter | Mastervolt Combi Mass 24/4000-120 |
| Shorepower | with cable Laadregelaar welke instelbaar is tussen de 4 & 45 A |
| Insulation transformer | Mastervolt Mass GI3.5 |
| Extra info | Brandstofpomp C.A.V. en 6 injectoren gereviseerd in 2023 |
| Extra info | Dynamo Bosch 70A gereviseerd in 2023 |
| Extra info | Hoofdmotor heeft in mei 2025 een grote beurt gehad |

NAVIGATION

| | |
|----------------------|---------------------|
| Depth sounder | Lowrance HOOK DSI4x |
|----------------------|---------------------|

EQUIPMENT

| | |
|-------------------------|--|
| Fixed windscreen | yes |
| Bimini | yes |
| Anchor chain | 40 |
| Windlass | manual |
| Davits | Wendbaar 180 graden, uitneembaar, max 125kg per stuk |
| Davits controls | manual |
| Wiper | yes |



SUPER VAN CRAFT 14.40 BAKDEKKER

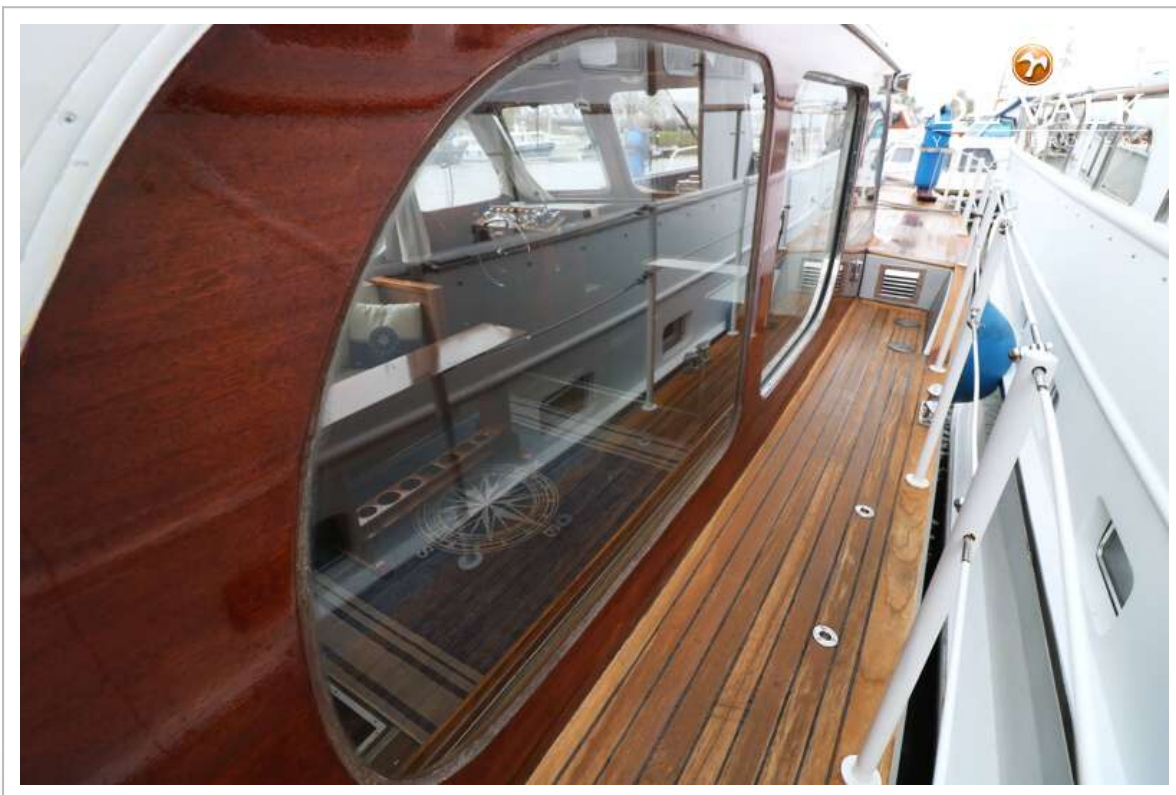
| | |
|----------------------|---|
| Horn | yes |
| Fenders | yes |
| Mooring lines | yes |
| Extra info | RVS boordtrap voor in BB & SB gangboord |



SUPER VAN CRAFT 14.40 BAKDEKKER



SUPER VAN CRAFT 14.40 BAKDEKKER



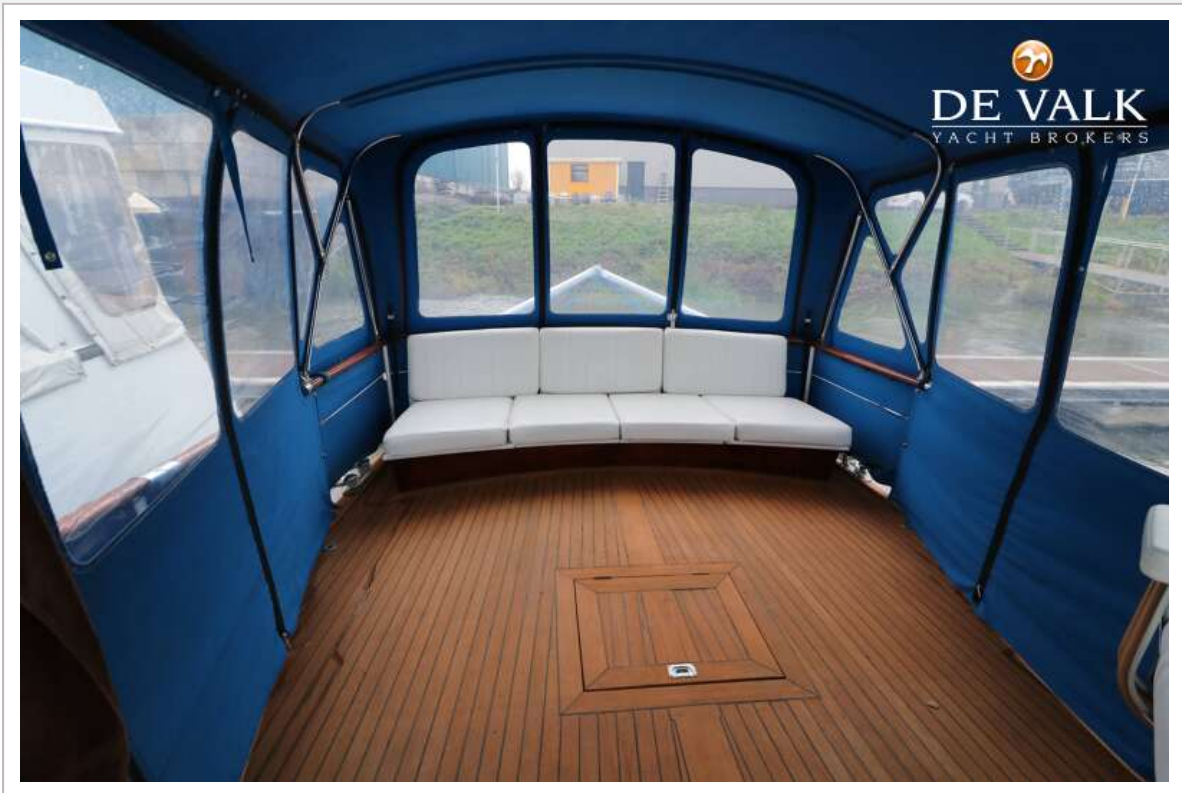
SUPER VAN CRAFT 14.40 BAKDEKKER



SUPER VAN CRAFT 14.40 BAKDEKKER



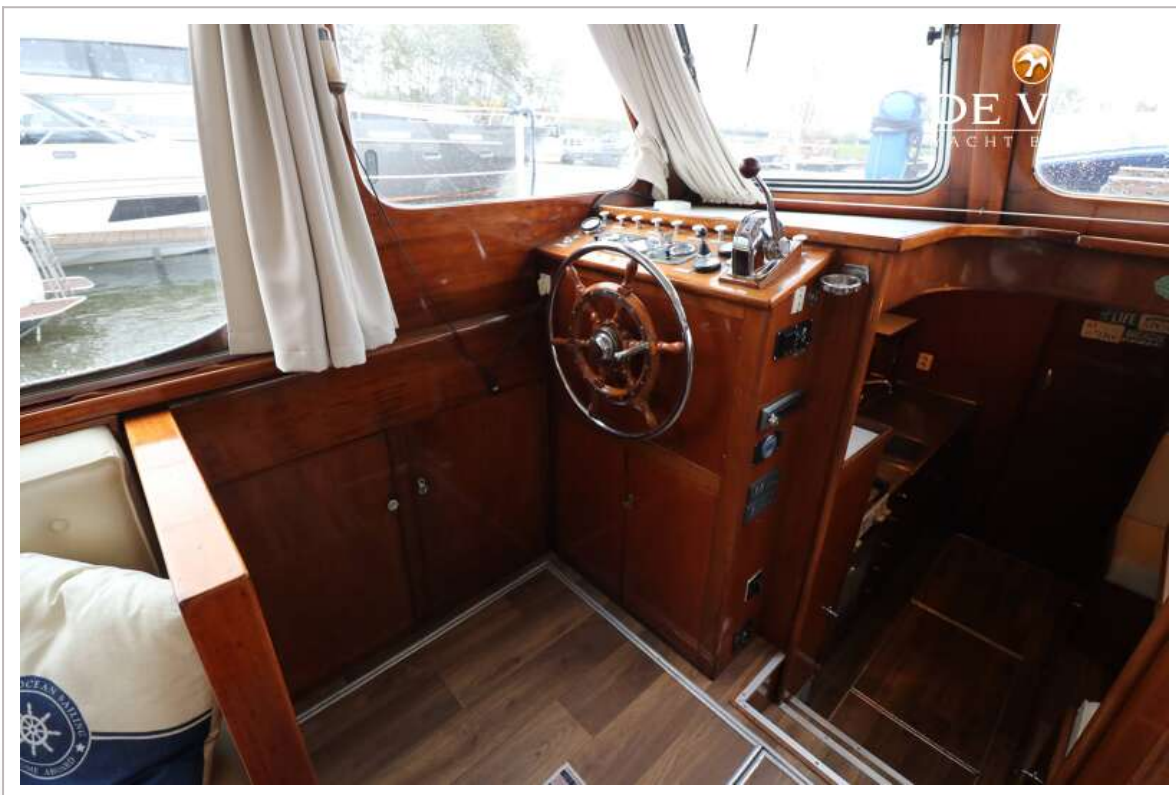
SUPER VAN CRAFT 14.40 BAKDEKKER



SUPER VAN CRAFT 14.40 BAKDEKKER



SUPER VAN CRAFT 14.40 BAKDEKKER



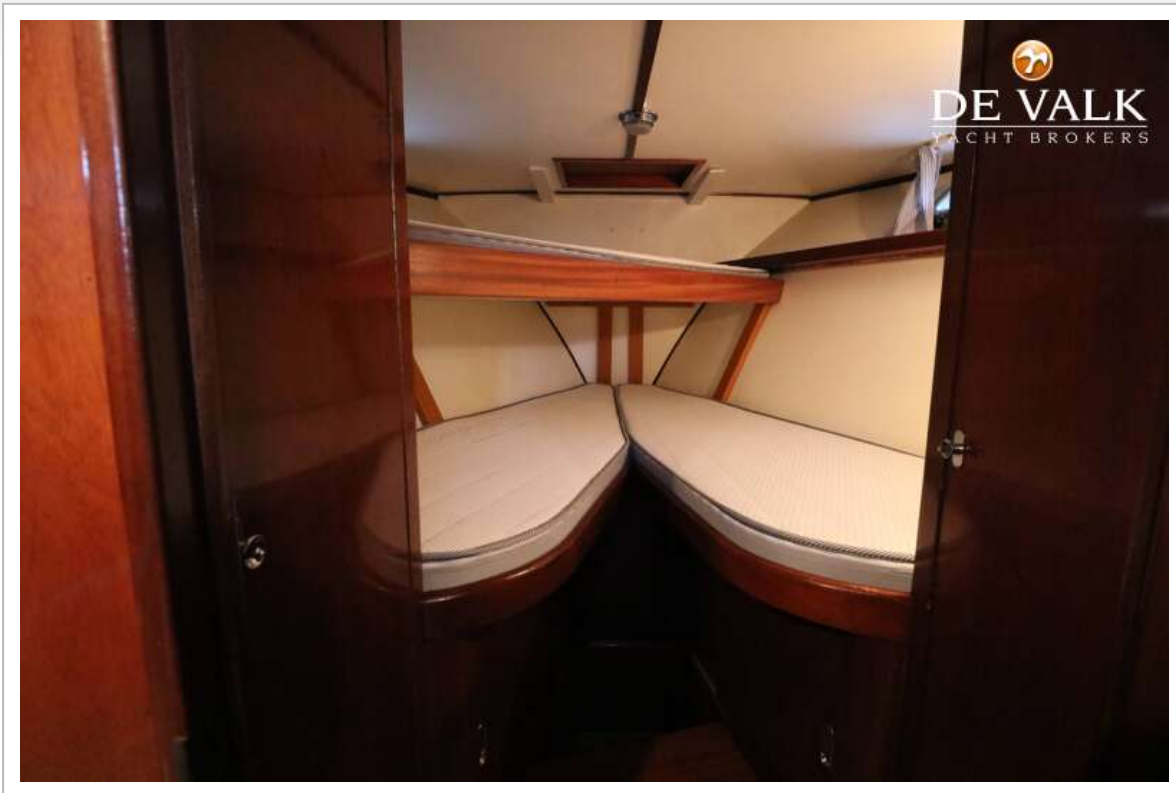
SUPER VAN CRAFT 14.40 BAKDEKKER



SUPER VAN CRAFT 14.40 BAKDEKKER



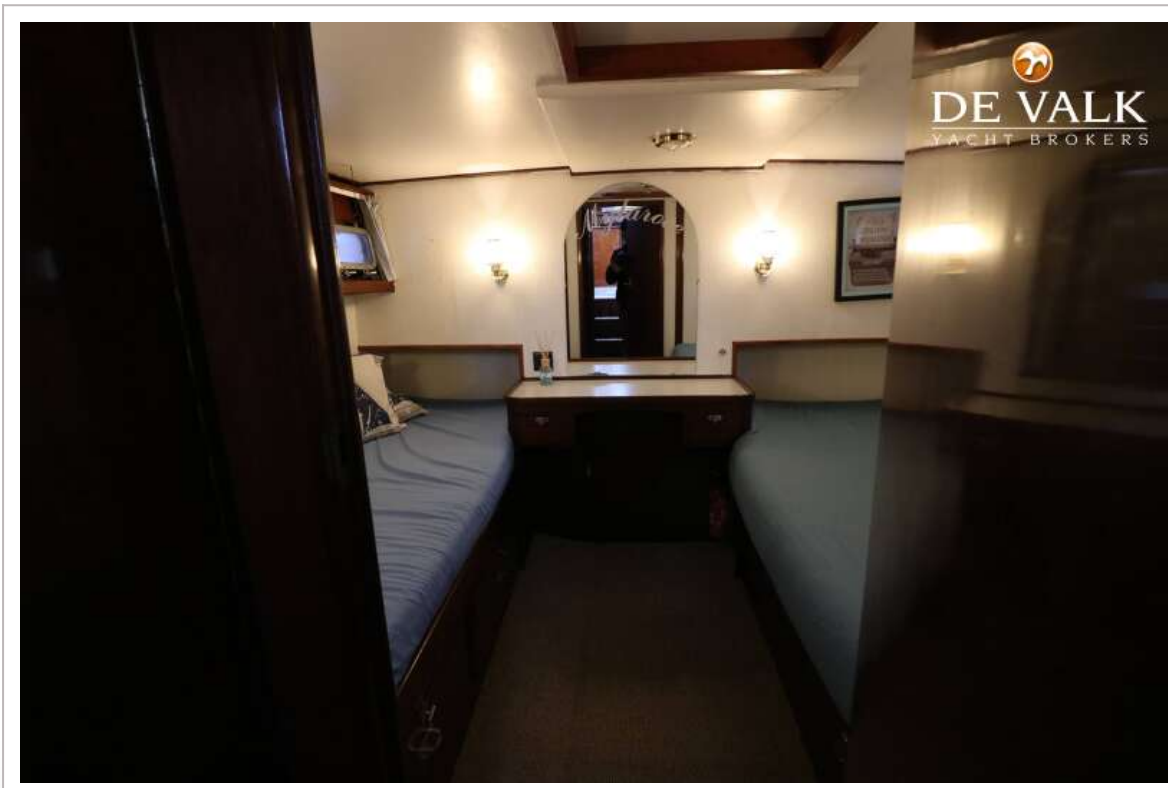
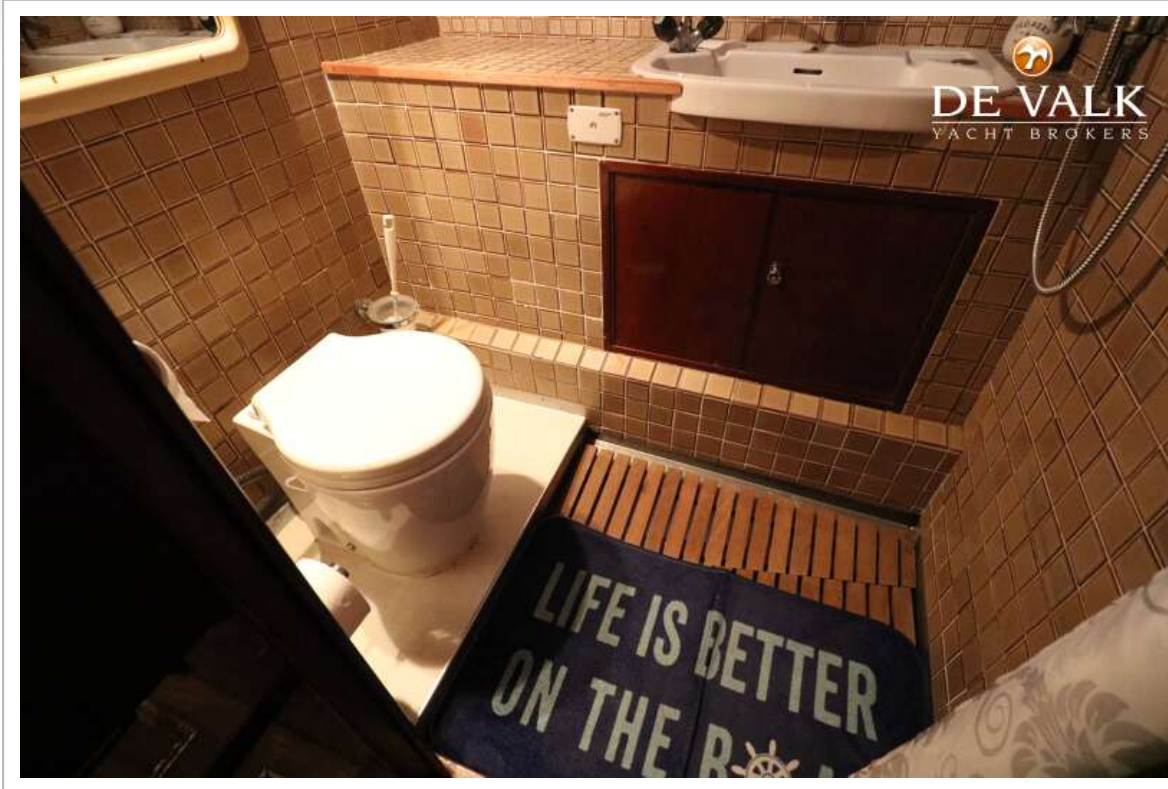
SUPER VAN CRAFT 14.40 BAKDEKKER



SUPER VAN CRAFT 14.40 BAKDEKKER



SUPER VAN CRAFT 14.40 BAKDEKKER



SUPER VAN CRAFT 14.40 BAKDEKKER

