



DE VALK  
YACHT BROKERS



## HALLBERG RASSY 352



DE VALK  
YACHT BROKERS

# HALLBERG RASSY 352

## BROKER'S COMMENTS

The Hallberg-Rassy 352 from 1987 offers excellent value for someone seeking a rugged, comfortable, high-quality cruiser with Scandinavian build that can handle serious sailing

*Sofia Iliia-Salvanou*

## SPECIFICATIONS

<b>Dimensions</b>	10.60 x 3.38 x 1.67 (m)	<b>Builder</b>	HALLBERG RASSY VARVS AB
<b>Built</b>	1987	<b>Cabins</b>	2
<b>Material</b>	GRP	<b>Berths</b>	6
<b>Engine(s)</b>	1 x VOLVO PENTA Turbo 2003T diesel	<b>Hp/Kw</b>	43.00 (hp), 31.65 (kw)
<b>Asking price</b>	€ 81.700 (VAT Paid)	<b>Lying</b>	elsewhere / Not at sales office

## CONTACT

<b>Sales office</b>	De Valk Corfu	<b>Telephone</b>	(+30) 6948681503
<b>Address</b>	New Port of Corfu, near Gouvia Marina 490 83 Corfu GR	<b>E-mail</b>	corfu@devalk.nl

## DISCLAIMER

These particulars are given in good faith as supplied but cannot be guaranteed.



## GENERAL

<b>Model</b>	HALLBERG RASSY 352
<b>Type</b>	sailing yacht
<b>LOA (m)</b>	10,60
<b>LWL (m)</b>	8,70
<b>Beam (m)</b>	3,38
<b>Draft (m)</b>	1,67
<b>Headroom (m)</b>	1,85
<b>Year built</b>	1987
<b>Builder</b>	HALLBERG RASSY VARVS AB
<b>Country</b>	Sweden
<b>Designer</b>	Christof Rassy & Olle Enderlein
<b>Displacement (t)</b>	6,7
<b>Ballast (tonnes)</b>	3
<b>Hull material</b>	GRP
<b>Hull colour</b>	off-white
<b>Keel type</b>	long keel
<b>Superstructure material</b>	GRP
<b>Rubbing strake</b>	yes
<b>Deck material</b>	GRP
<b>Cockpit deck finish</b>	teak
<b>Antifouling (year)</b>	2025
<b>Deckhatch</b>	X 4 (with covers)
<b>Portholes</b>	yes
<b>Fuel tank (litre)</b>	X 2 (total 240 Lt) (Both diesel tanks cleaned in 2020)
<b>Level indicator (fuel tank)</b>	2 new inspection hatches for the reserve tank
<b>Freshwater tank (litre)</b>	300
<b>Wheel steering</b>	yes
<b>Outside helm position</b>	yes
<b>Emergency tiller</b>	yes
<b>Extra info</b>	Hallberg Rassy teak/stainless steel transom bathing platform wit



## Extra info

All (23) electrical circuit breakers new

## ACCOMMODATION

<b>Cabins</b>	2
<b>Berths</b>	6
<b>Floor</b>	teak
<b>Saloon</b>	Complete saloon upholstery (foam & fabric) (2019)
<b>Chart table</b>	yes
<b>Aft Cabin</b>	yes
<b>Dinette</b>	yes
<b>Opening door to cockpit</b>	yes
<b>Galley</b>	yes
<b>Countertop</b>	yes
<b>Sink</b>	yes
<b>Cooker</b>	yes
<b>Oven</b>	yes
<b>Fridge</b>	yes
<b>Hot water system</b>	Eberspächer diesel heater repair (2025)
<b>Water pressure system</b>	yes
<b>Crockery</b>	yes
<b>Owners cabin</b>	double bed + single bed
<b>Wardrobe</b>	yes
<b>Bathroom</b>	separate
<b>Toilet</b>	separate
<b>Toilet system</b>	manual Jabsco manual toilet (new 04/2025)
<b>Wash basin</b>	in the bathroom
<b>Shower</b>	separate
<b>Guest cabin 1</b>	v-bed
<b>Wardrobe</b>	yes
<b>Bathroom</b>	separate
<b>Toilet</b>	separate



Wash basin	in the bathroom
Shower	separate
Extra info	Functional sunroof
Extra info	All lights are LED. 3 230 V outlets 5 12 V outlets

## MACHINERY

No of engines	1
Make	VOLVO PENTA
Type	Turbo 2003T
HP	43
kW	31.65
Fuel	diesel
Year installed	2003
Engine cooling system	Heat exchanger and oil cooler cleaned.
Drive	shaft
Shaft seal	New shaft seal 2022, New shaft bearing 2023
Bowthruster	Bow thruster Quick BTQ1807512, Quick bow thruster panel (2019)
Propeller type	folding 1 fixed-pitch propeller (installed)
Propeller blades	Max Prop (folding propeller) of 3 Blades
Propeller shaft material	stainless steel
Manual bilge pump	yes
Electric bilge pump	yes
Electrical installation	yes
Batteries	2 WhisperPower AGM batteries, 165 AH each (2019)
Start battery	yes
Service battery	yes
Battery monitor	Simarine battery monitor (2019)
Battery charger	Whisper Power WP-12V/2000 VA 80 A (2019)
Battery charger/inverter	1 Sterling charger 130 Ah (2019)
Solar panel	2 folding solar panels, 100 W each, railing (2019)



<b>Shorepower</b>	with cable
<b>Extra info</b>	2 WhisperPower AGM batteries, 145 Ah each (2019)
<b>Extra info</b>	New sea cocks 2014 bronze
<b>Extra info</b>	Full service of both alternators, including disassembly (2025)

## NAVIGATION

<b>Compass</b>	yes
<b>Multi control display</b>	3 i70s multifunctional instruments (2023)
<b>Depth sounder</b>	yes
<b>VHF</b>	Marine
<b>Autopilot</b>	Raymarine Evolution ACU 400 autopilot with p70s (2023)
<b>Radar</b>	Raymarine Quantum 2 Doppler (2019)
<b>Plotter/GPS</b>	2 (!) Raymarine AXIOM 9' plotters (2023)
<b>AIS transceiver</b>	1 Raymarine AIS700 Class B (2023)
<b>EPIRB</b>	yes
<b>Navigation lights</b>	All navigation lights LED
<b>Extra info</b>	1 Entel Marine handheld radio
<b>Extra info</b>	Raymarine Ray49E DSC

## EQUIPMENT

<b>Sprayhood</b>	yes
<b>Cockpit cover</b>	Cockpit cover (cake stand)
<b>Sun awning</b>	yes
<b>Winter cover</b>	Winter cover (annual service)
<b>Window cover</b>	yes
<b>Cockpit cushions</b>	yes
<b>Cockpit table</b>	yes
<b>Bathing platform</b>	yes
<b>Boarding ladder</b>	yes
<b>Bow ladder</b>	yes
<b>Gangway</b>	1 folding pasarella, stainless steel/teak Grating



<b>Deck shower</b>	Outdoor shower
<b>Anchor</b>	Rocna 20 Kg
<b>Anchor chain</b>	80 m x 8 mm, with counter 2024. Controlled from helm & Locker
<b>Anchor 2</b>	CQR Plough Plus anchor 3: Danforth
<b>Anchor chain</b>	1 Anchor Twister shackle (Force)
<b>Chain counter</b>	Quick chain control / counter of 2024
<b>Windlass</b>	LOFRANS, serviced 2023
<b>Dinghy</b>	1 Zodiac dinghy Cadet 230 with dinghy anchor 2,5 Kg
<b>Outboard</b>	1 Honda BF 2.3 air-cooled
<b>Sea railing</b>	yes
<b>Life raft</b>	yes
<b>Lifejackets</b>	yes
<b>Lifebuoy</b>	yes
<b>Fenders</b>	10 Long, 1 Ball & 2 Dock fenders
<b>Mooring lines</b>	Mooring lines and extensive rope inventory
<b>Radio-cd player</b>	1 Fusion MS-RA770 Apollo marine stereo (2023)
<b>Cockpit speakers</b>	Cockpit speakers (2019)
<b>Fire extinguisher</b>	yes
<b>Extra info</b>	Secumar rescue light 2023 Secumar life collar 2023
<b>Extra info</b>	Gland gland packing replaced (all 2025)
<b>Extra info</b>	Sea pump service.

## RIGGING

<b>Rigging</b>	Running rigging new 2023
<b>Standing rigging</b>	Selden, (Upper shroud, mid shroud, 2 lower shrouds each)
<b>Brand mast</b>	Selden (3 winches on the mast, 2 of which are self-tailing)
<b>Material mast</b>	aluminium Mast with 2 spreaders, top-rigged
<b>Spreader</b>	X 2, upper & mid & lower shrouds.
<b>Mainsail</b>	DACRON battened (Dustom 2023) battened 3 reefs 2023 32 m2
<b>Mainsail cover</b>	yes



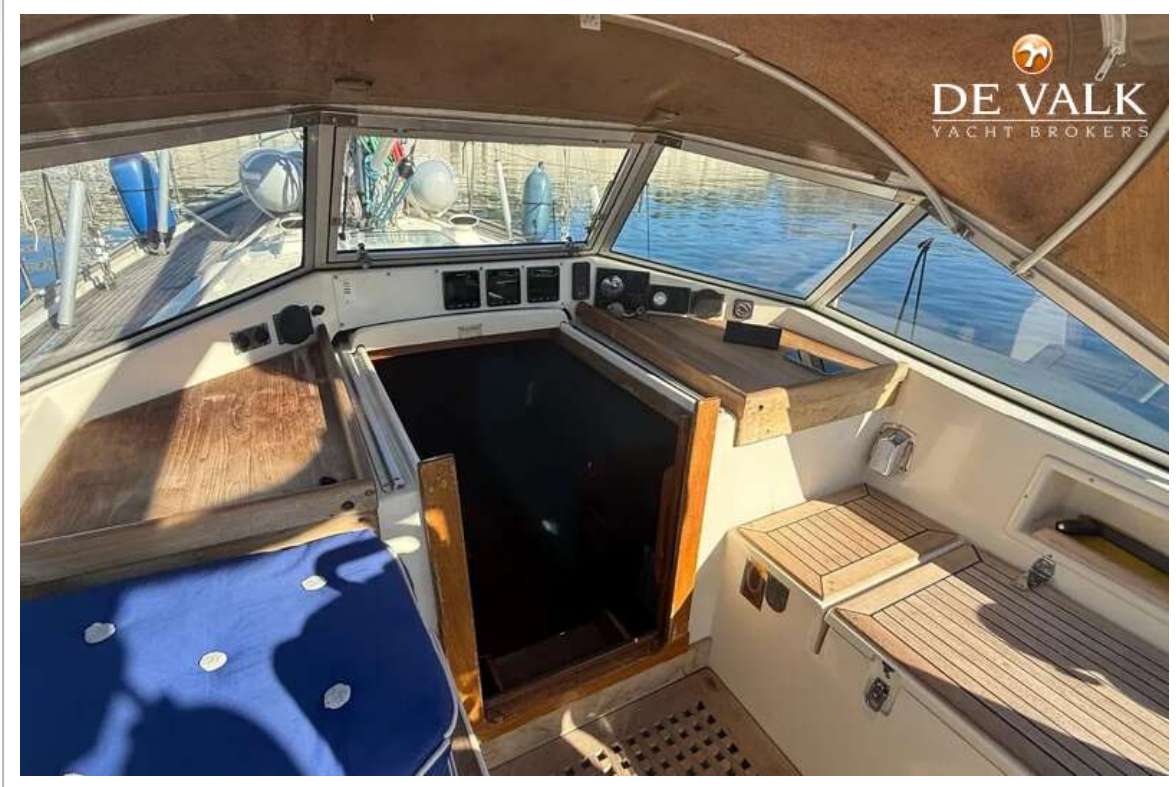
<b>Genoa</b>	Full reef head sail with 2 keeps. DACRON (Dustom 2023) 37,5 m2
<b>Genoa I</b>	Dacron headsail (Dustom 2023) 37.5 m2
<b>Multifunctional winches</b>	3 winch handles



# HALLBERG RASSY 352



# HALLBERG RASSY 352



# HALLBERG RASSY 352



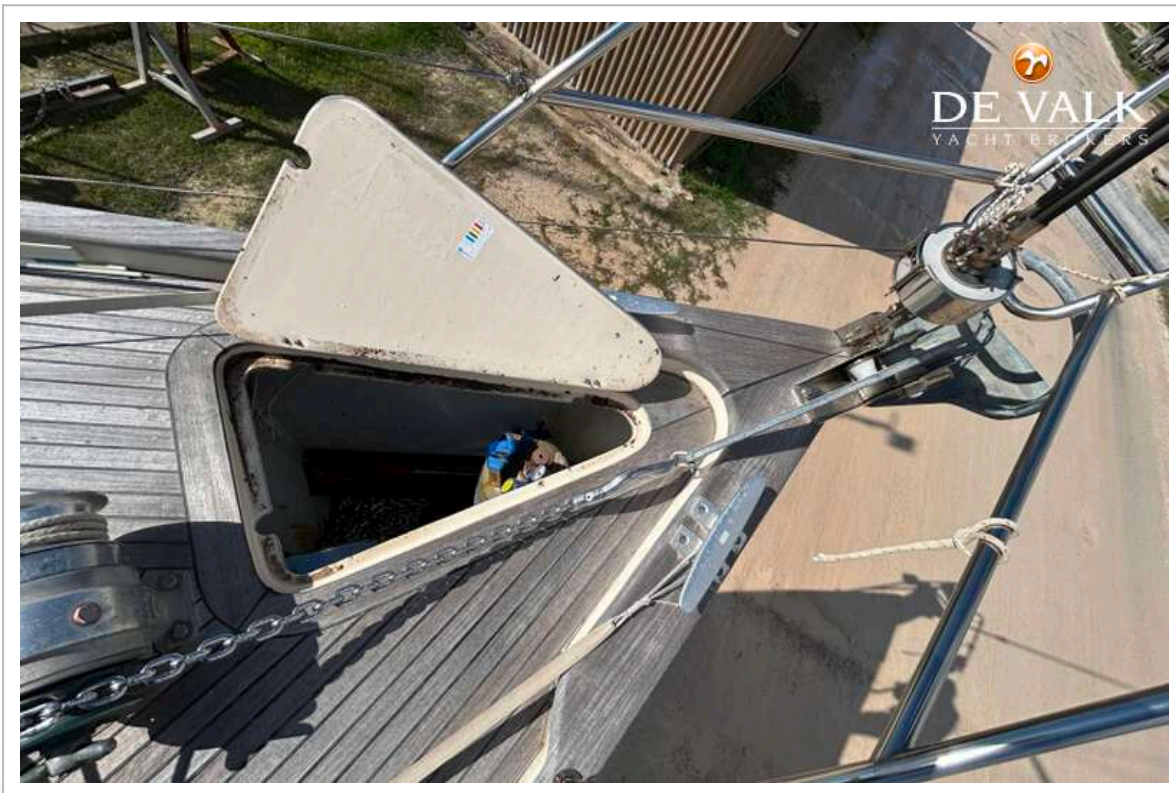
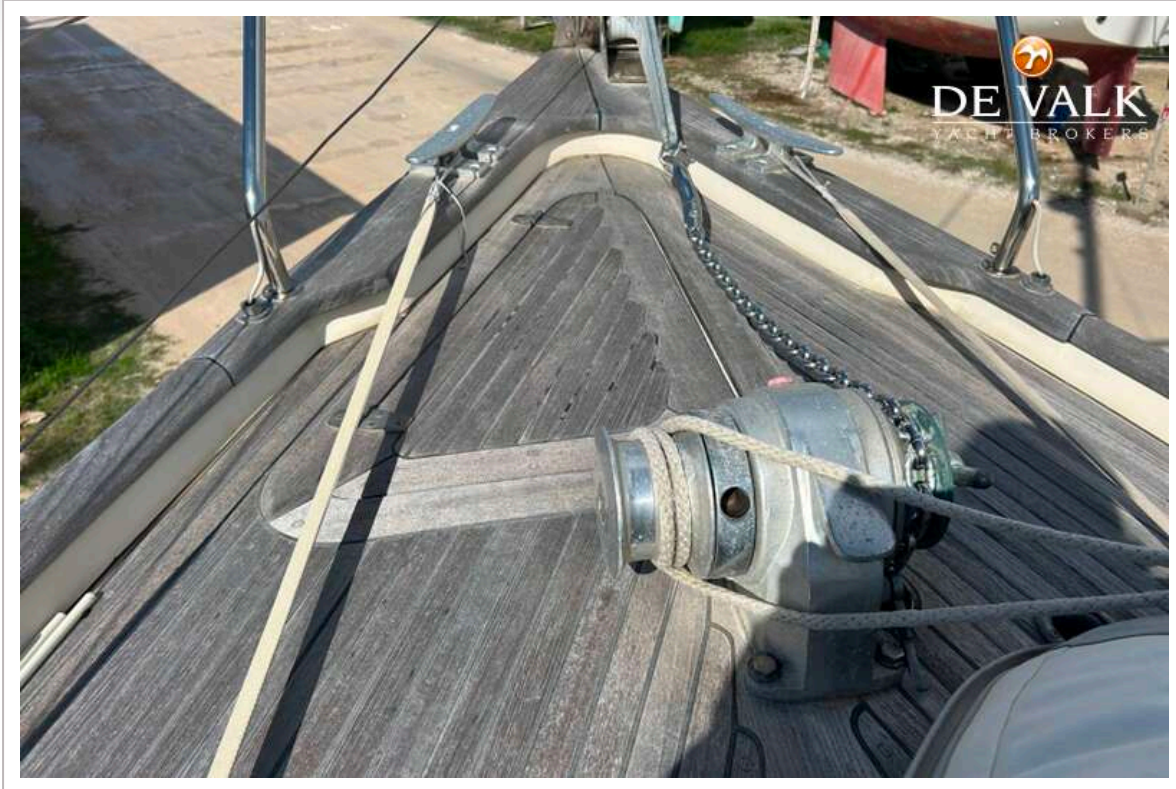
# HALLBERG RASSY 352



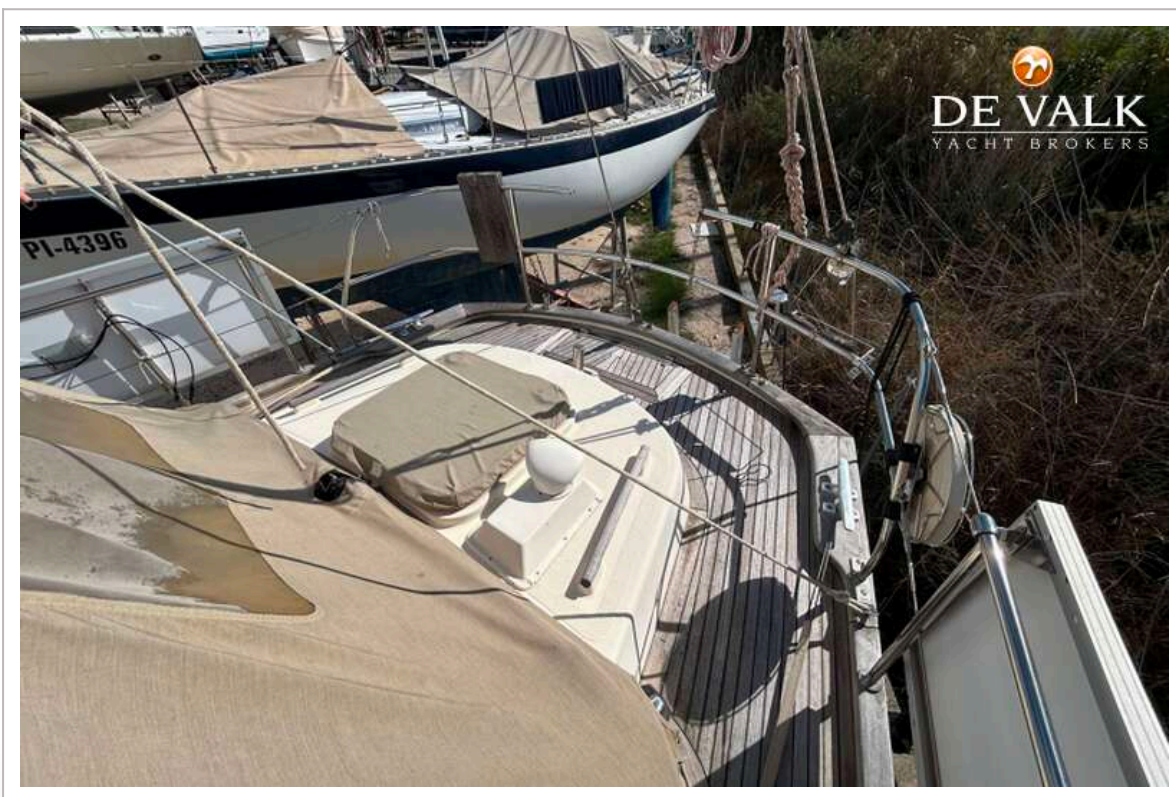
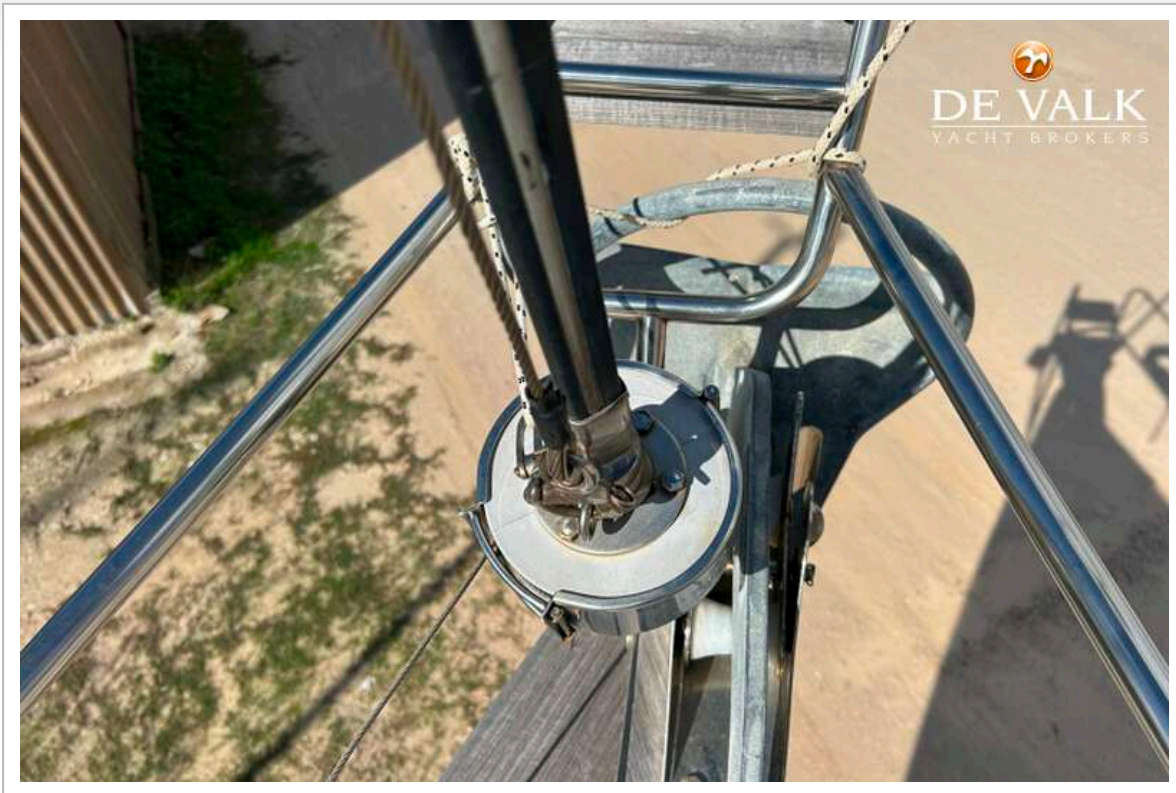
# HALLBERG RASSY 352



# HALLBERG RASSY 352



# HALLBERG RASSY 352



# HALLBERG RASSY 352



# HALLBERG RASSY 352



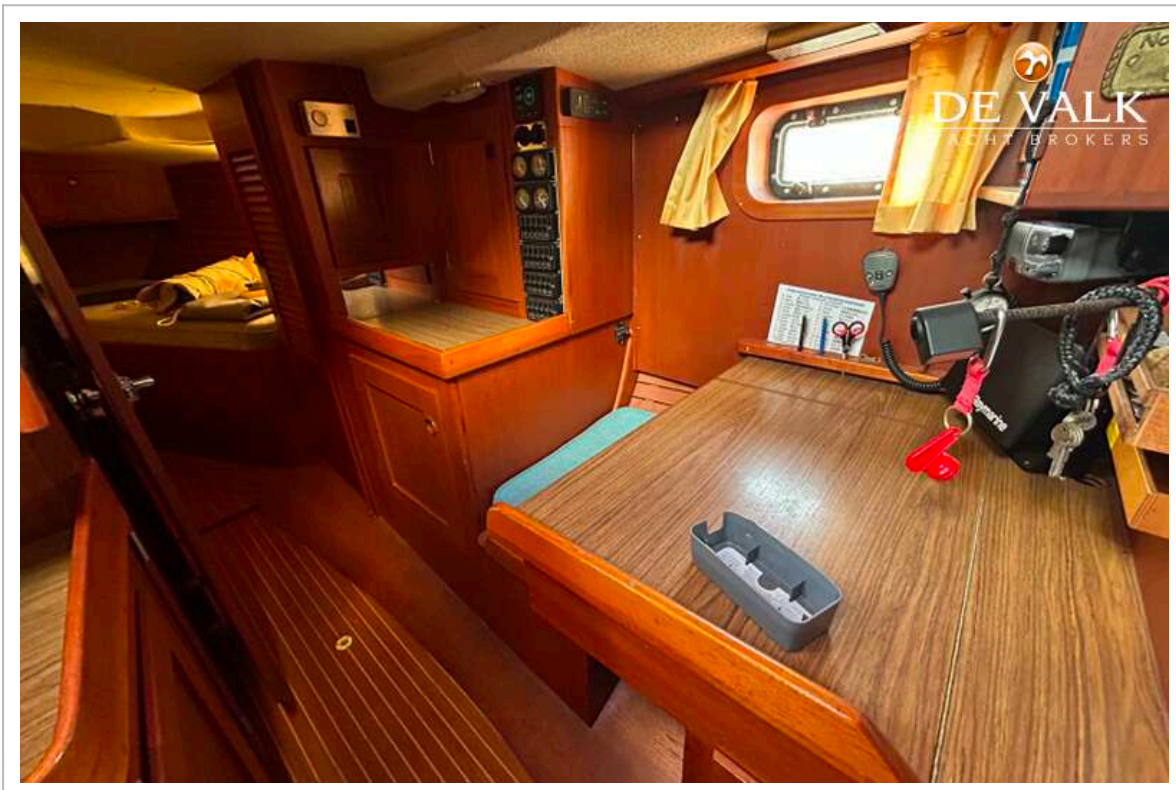
# HALLBERG RASSY 352



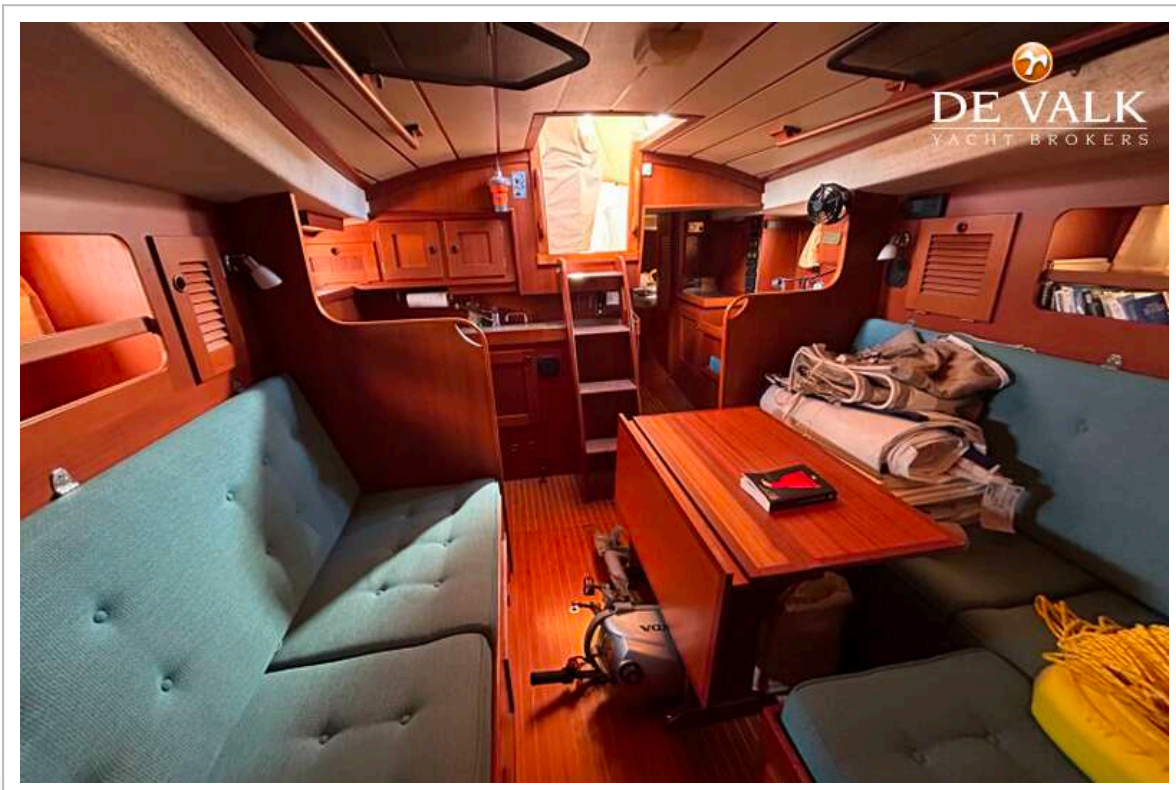
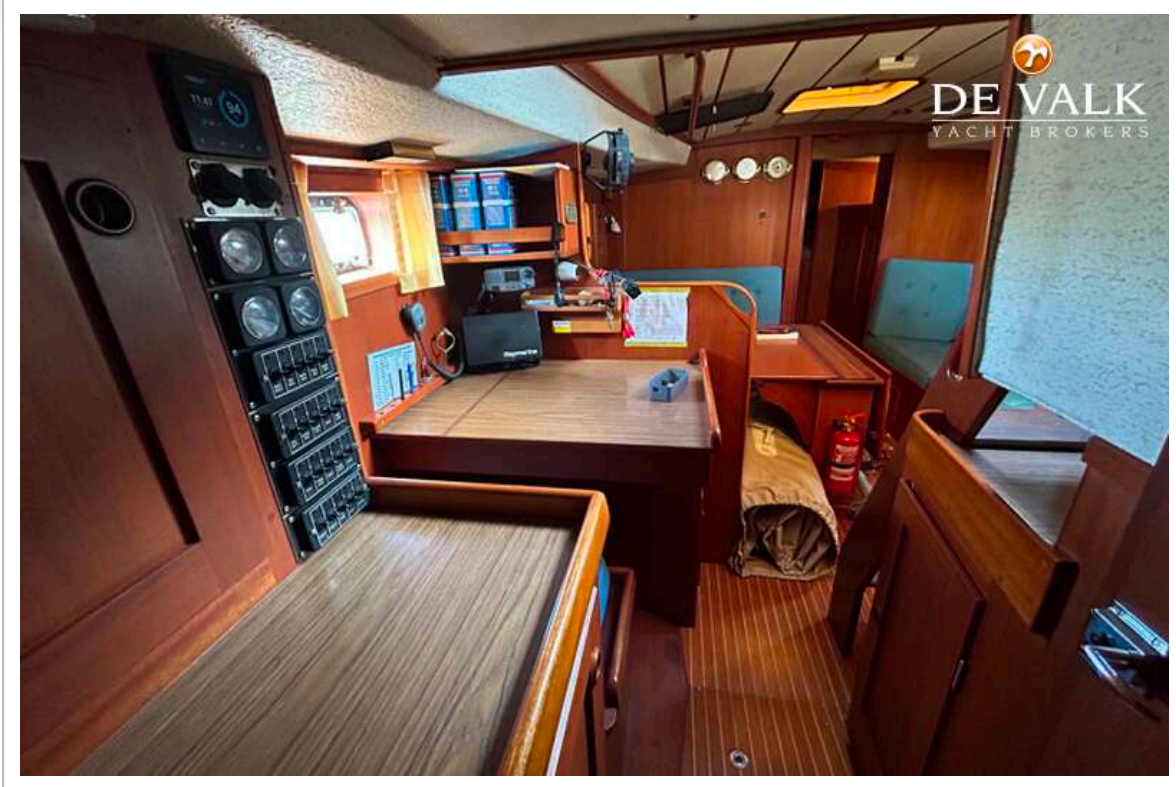
# HALLBERG RASSY 352



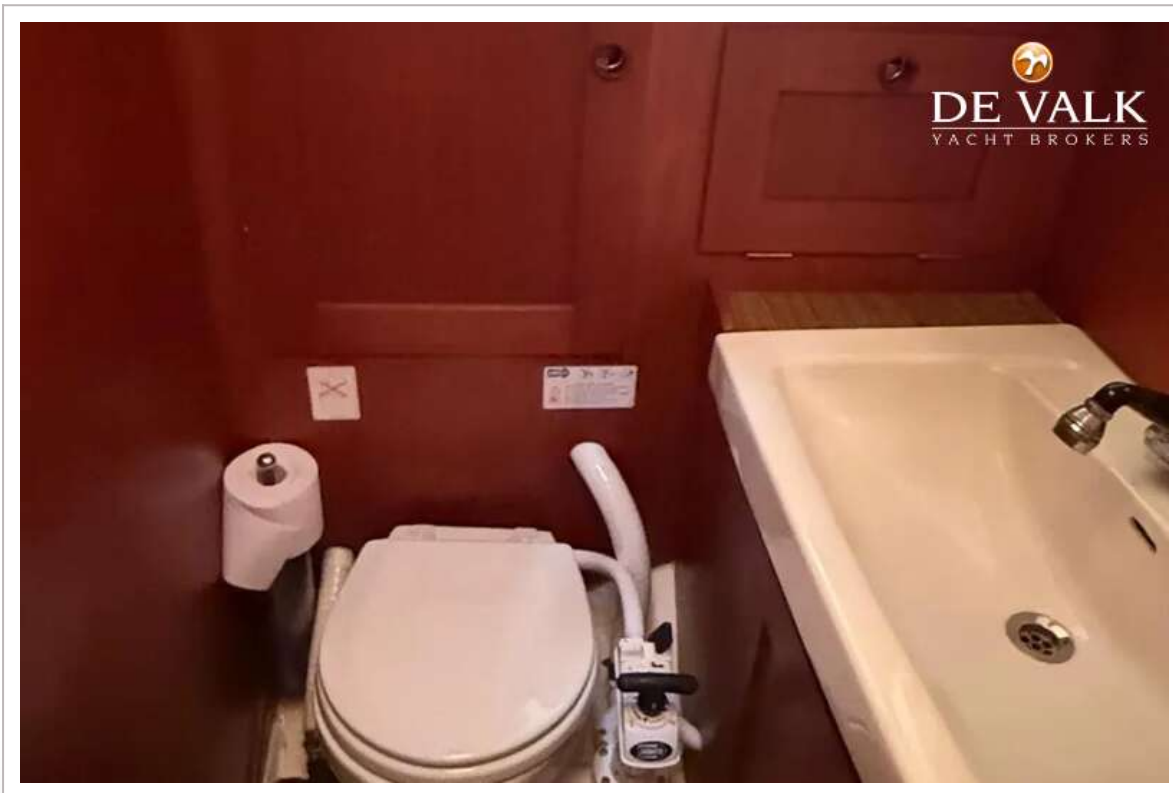
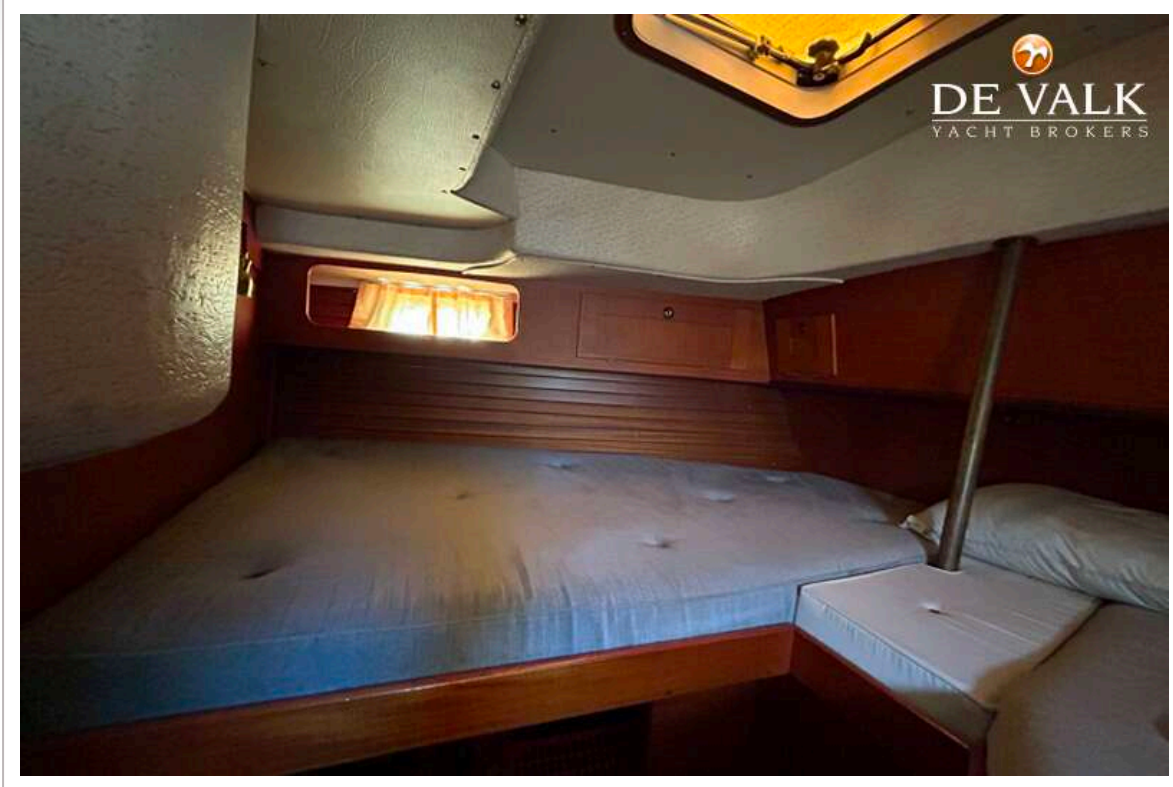
# HALLBERG RASSY 352



# HALLBERG RASSY 352



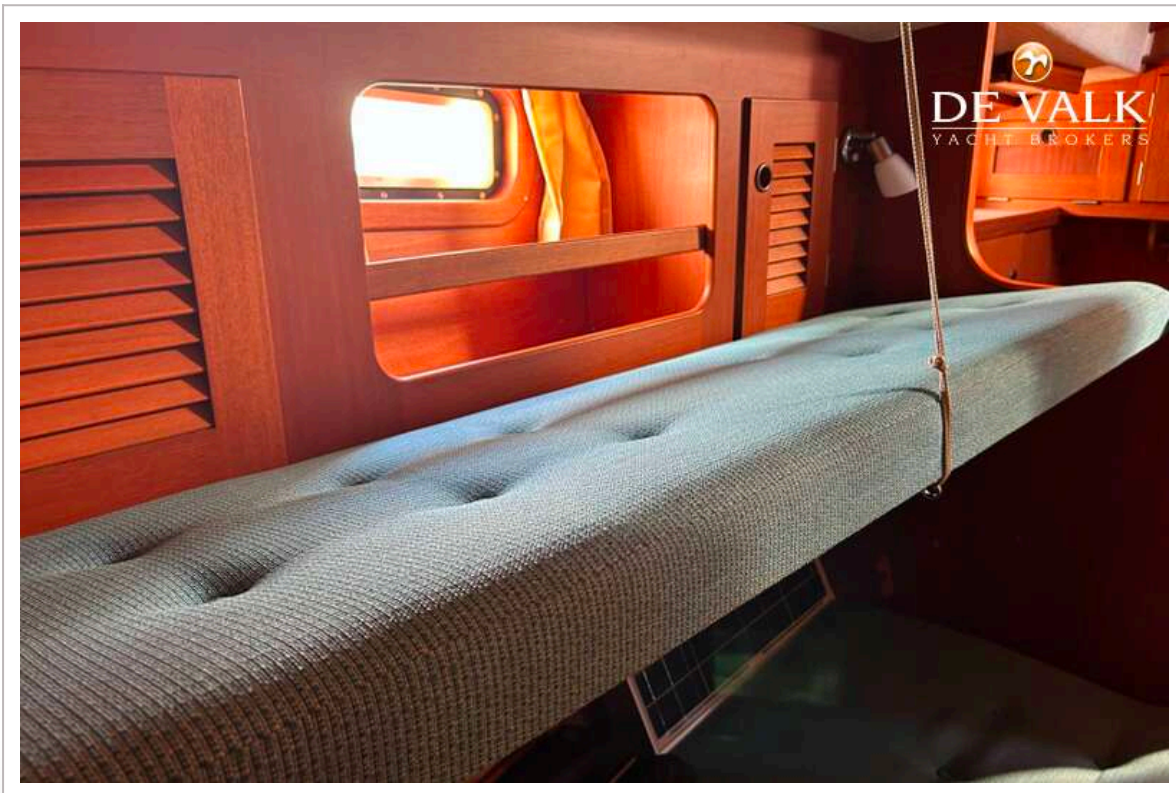
# HALLBERG RASSY 352



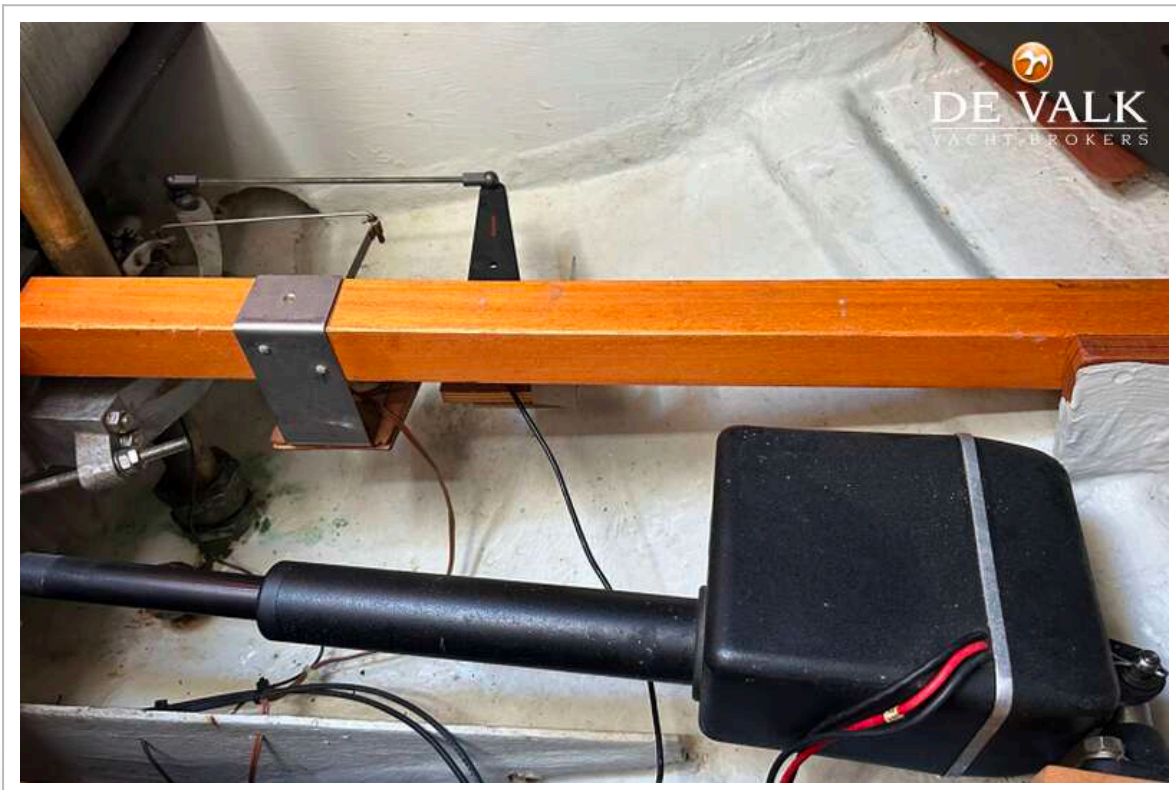
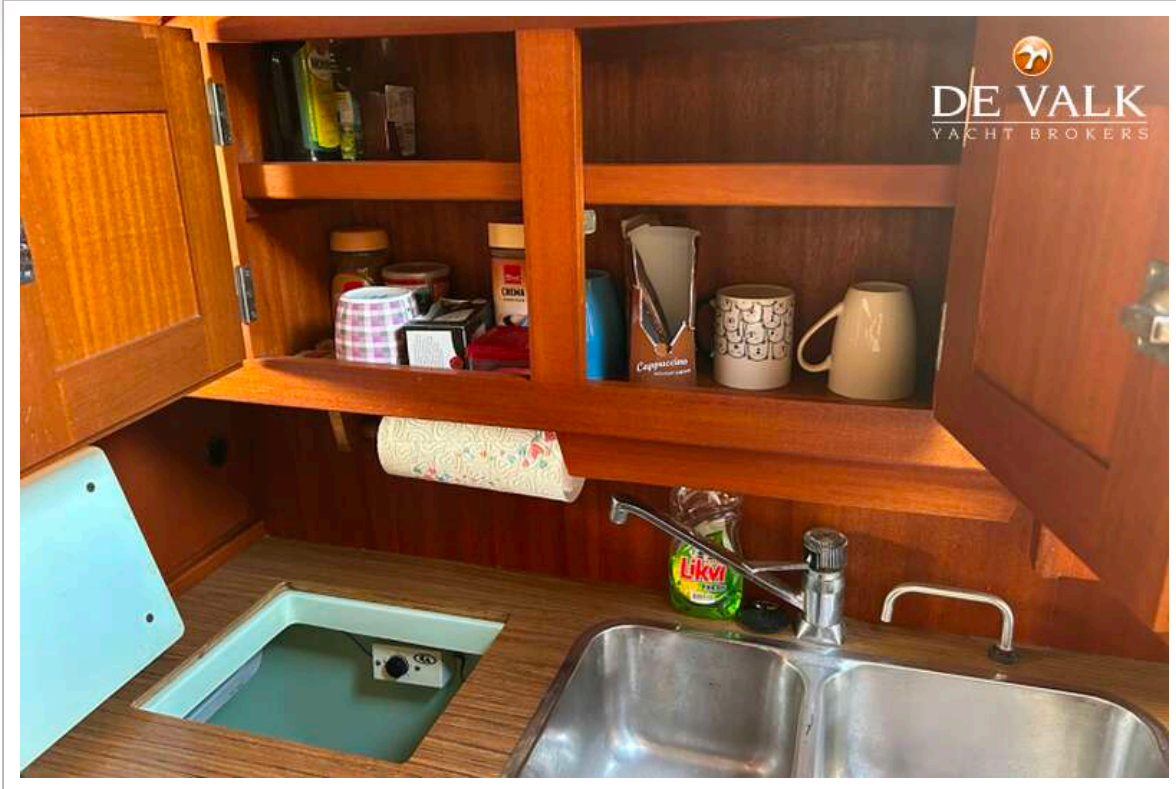
# HALLBERG RASSY 352



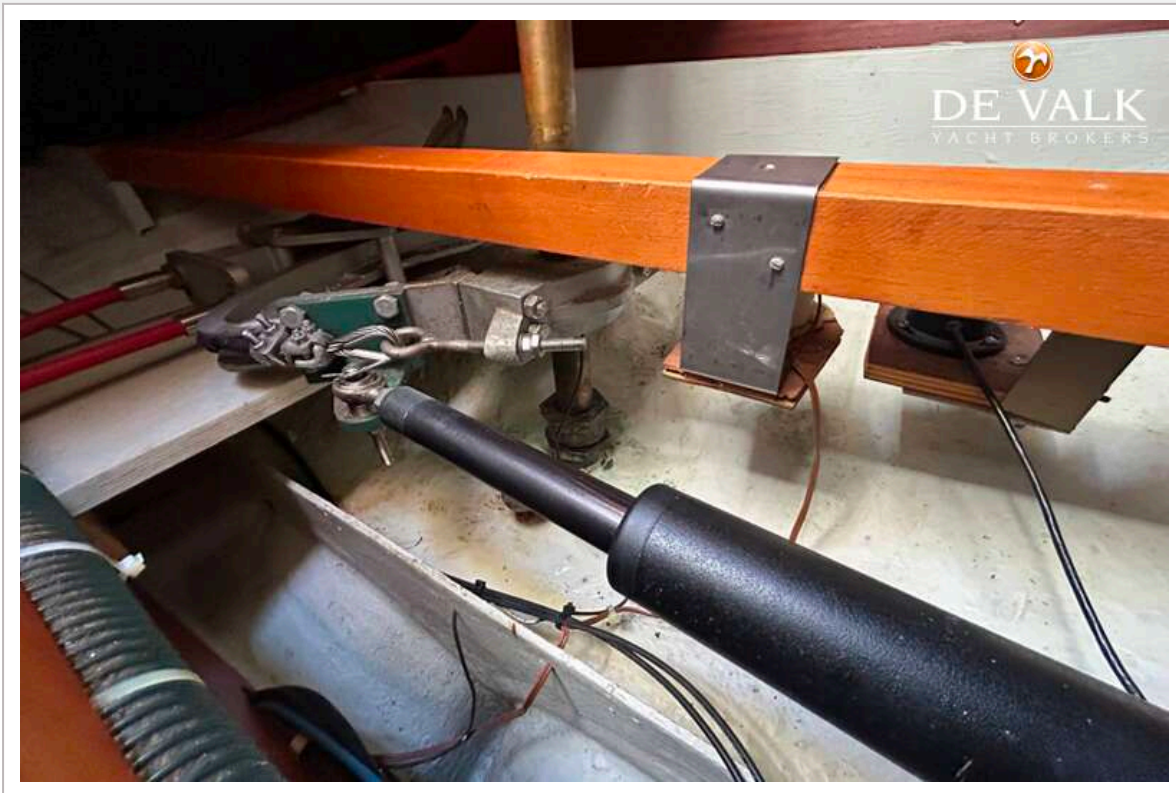
# HALLBERG RASSY 352



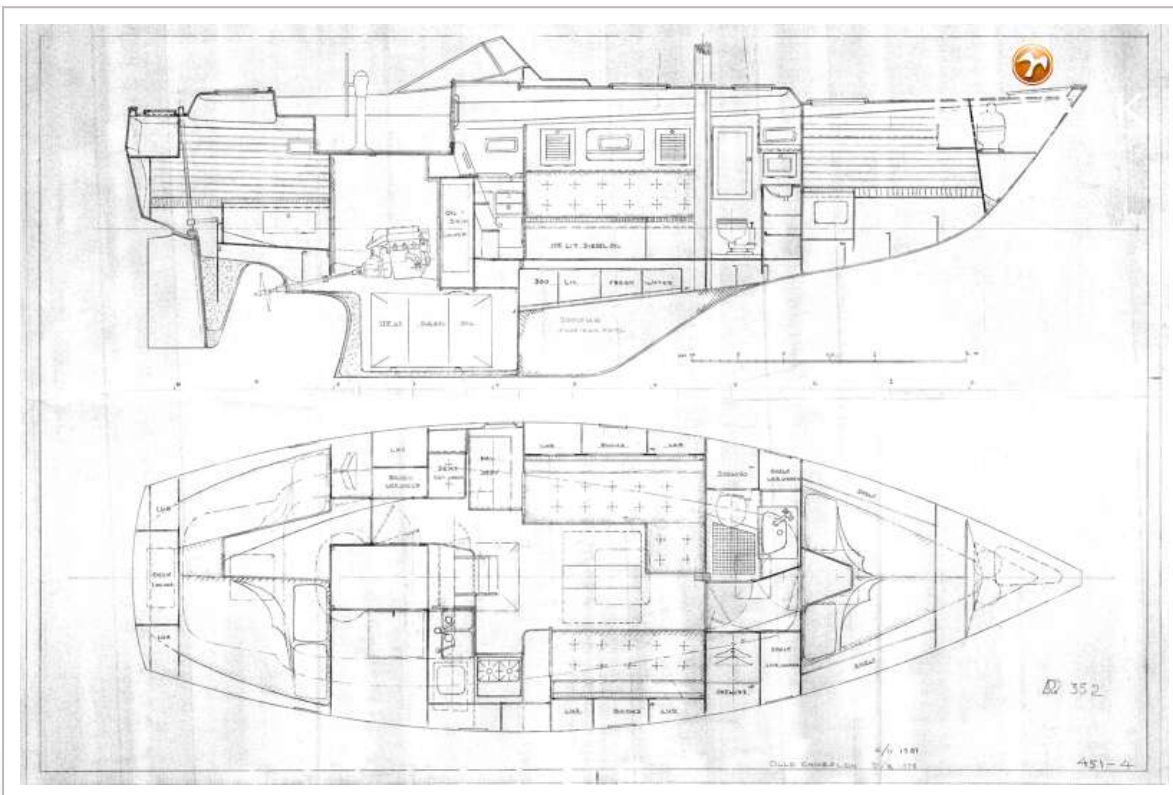
# HALLBERG RASSY 352



# HALLBERG RASSY 352



# HALLBERG RASSY 352



# HALLBERG RASSY 352



# HALLBERG RASSY 352



# HALLBERG RASSY 352

