



DE VALK  
YACHT BROKERS



## NAJAD 390



DE VALK  
YACHT BROKERS

# NAJAD 390

## BROKER'S COMMENTS

Najad 390 in very good condition, designed by the legendary Thorwald Karlsson, because good taste never goes out of style. This yacht has been stored indoors since 2015 and, rather impressively, has not been used since, making it one of the most well rested Najads you'll ever see. New sails were ordered in 2015 and never fitted, while new rigging and heating installed in 2026 ensure she is fully updated and ready for immediate cruising. Essentially, this is a classic Najad that has spent the last decade patiently waiting for the right owner, warm, rigged, and eager to finally feel the water.

*Johan Nooitgedagt*

## SPECIFICATIONS

<b>Dimensions</b>	11.75 x 3.50 x 1.85 (m)	<b>Builder</b>	Najad Varvet AB
<b>Built</b>	1994	<b>Cabins</b>	2
<b>Material</b>	GRP	<b>Berths</b>	6
<b>Engine(s)</b>	1 x Volvo Penta TAMD 22A diesel	<b>Hp/Kw</b>	72.00 (hp), 52.92 (kw)
<b>Asking price</b>	sold (VAT )	<b>Lying</b>	at sales office

## CONTACT

<b>Sales office</b>	De Valk Hindeloopen B.V.	<b>Telephone</b>	+31 514 52 40 00
<b>Address</b>	Oosterstrand 1 8713 JS Hindeloopen NL	<b>E-mail</b>	hindeloopen@devalk.nl

## DISCLAIMER

These particulars are given in good faith as supplied but cannot be guaranteed.



## GENERAL

<b>Model</b>	NAJAD 390
<b>Type</b>	sailing yacht
<b>LOA (m)</b>	11,75
<b>LWL (m)</b>	10,00
<b>Beam (m)</b>	3,50
<b>Draft (m)</b>	1,85
<b>Air draft (m)</b>	18,50
<b>Headroom (m)</b>	1,95
<b>Year built</b>	1994
<b>Builder</b>	Najad Varvet AB
<b>Country</b>	Sweden
<b>Designer</b>	Thorwald Karlsson
<b>Displacement (t)</b>	9,5
<b>Ballast (tonnes)</b>	cast iron 4 tonnes
<b>CE norm</b>	NA
<b>Hull material</b>	GRP
<b>Hull colour</b>	white
<b>Hull shape</b>	round-bilged   Fin with rudder on skeg
<b>Keel type</b>	fin keel
<b>Superstructure material</b>	GRP
<b>Rubbing strake</b>	stainless steel
<b>Deck material</b>	GRP
<b>Deck finish</b>	teak
<b>Superstructure deck finish</b>	teak
<b>Cockpit deck finish</b>	teak
<b>Antifouling (year)</b>	2026
<b>Dorades</b>	2
<b>Window frame</b>	stainless steel
<b>Window material</b>	polycarbonate
<b>Deckhatch</b>	3 x Stainless



<b>Portholes</b>	stainless steel   with several moscito screens
<b>Fuel tank (litre)</b>	stainless steel   250 ltr.
<b>Level indicator (fuel tank)</b>	yes
<b>Freshwater tank (litre)</b>	stainless steel   350 ltr.
<b>Level indicator (freshwater)</b>	yes
<b>Blackwater tank (litre)</b>	stainless steel   60 ltr.
<b>Level indicator (blackwater)</b>	yes
<b>Blackwater tank extraction</b>	pump
<b>Wheel steering</b>	cable steering
<b>Emergency tiller</b>	yes

## ACCOMMODATION

<b>Cabins</b>	2
<b>Berths</b>	6
<b>Interior</b>	mahogany   New Upholstry 2015, never sat on !!
<b>Layout</b>	yes
<b>Floor</b>	teak and holly
<b>Saloon</b>	yes
<b>Headroom saloon (m)</b>	1,95 mtr.
<b>Heating</b>	diesel ducted hot air   2026
<b>Navigation center</b>	yes
<b>Chart table</b>	yes
<b>Aft Cabin</b>	yes
<b>Sliding door to cockpit</b>	yes
<b>Galley</b>	L shaped
<b>Countertop</b>	wood   easy cleaning hard wearing laminate
<b>Sink</b>	stainless steel   double
<b>Cooker</b>	calor gas   2011   Eno 3 burner
<b>Oven</b>	2011
<b>Fridge</b>	130 ltr.
<b>Hot water system</b>	220V + engine   30 ltr. boiler



<b>Water pressure system</b>	yes
<b>Manual and/or foot pump</b>	Fresh water backup
<b>Crockery</b>	yes
<b>Owners cabin</b>	double bed
<b>Bed length (m)</b>	2,00 mtr.
<b>Wardrobe</b>	hanging and shelves
<b>Bathroom</b>	shared
<b>Toilet</b>	shared
<b>Toilet system</b>	manual
<b>Wash basin</b>	in the bathroom
<b>Shower</b>	shared
<b>Guest cabin 1</b>	v-bed
<b>Bed length (m)</b>	2,00 mtr.
<b>Wardrobe</b>	hanging and shelves

## MACHINERY

<b>No of engines</b>	1
<b>Make</b>	Volvo Penta
<b>Type</b>	TAMD 22A
<b>HP</b>	72
<b>kW</b>	52.92
<b>Fuel</b>	diesel
<b>Year installed</b>	1995
<b>Year of overhaul</b>	2009   1200 hours since   Turbo overhauled 2026
<b>Maximum speed (kn)</b>	7
<b>Cruising speed (kn)</b>	6
<b>Consumption (l/hr)</b>	3
<b>Range (nm)</b>	480
<b>Engine hours</b>	2046   na revisie 1200
<b>Engine cooling system</b>	freshwater heat exchanger
<b>Drive</b>	shaft



<b>Engine controls</b>	mechanical
<b>Gearbox</b>	mechanical
<b>Bowthruster</b>	electric   6 hp
<b>Exhaust</b>	watercooled
<b>Propeller type</b>	feathering   2009 Max prop
<b>Propeller blades</b>	3
<b>Propeller shaft material</b>	stainless steel
<b>Shaft lubrication</b>	water
<b>Manual bilge pump</b>	yes
<b>Electric bilge pump</b>	yes
<b>Electrical installation</b>	12V DC & 220 V AC
<b>Batteries</b>	3x
<b>Start battery</b>	2026   1 x 95 Ah Exide
<b>Service battery</b>	2026   2 x 140 Ah AGM
<b>Battery monitor</b>	2006   Masterlink BTM III
<b>Battery charger</b>	Mastervolt 12V 35 AH 2009 with alpha pro
<b>Inverter</b>	2006   Mastervolt 800w
<b>Wind generator</b>	Electric energy d400
<b>Solar panel</b>	2 panels
<b>Diode battery combiners</b>	yes
<b>Shorepower</b>	with cable
<b>Extra info</b>	Alternator 12V 110AH (2009)
<b>Extra info</b>	Mastervolt B1

## NAVIGATION

<b>Compass</b>	Suunto on steering pedestal
<b>Multi control display</b>	Autohelm Multi
<b>Depth sounder</b>	2006   Raymarine ST60
<b>Log</b>	2006   Raymarine ST60
<b>Windset</b>	2008   Raymarine ST60+
<b>VHF</b>	2006   Ray 240E with dual station



VHF handheld	Raymarine 101E
Autopilot	2007   Autohelm ST7000 / S2 with remote control
Rudder angle indicator	Raymarine
Radar	2006   raymarine (60 CM)
GPS	Raytheon GP300   Needs Service
Radar/GPS/plotter	2006   raymarine C120 display
Navtex	Navtex Pro plus 490/580 khz
Transmitter	2008   Icom 706 MKII G transceiver
Navigation lights	yes

## EQUIPMENT

Fixed windscreen	yes
Sprayhood	yes
Sun awning	yes
Cockpit table	yes
Bathing platform	Stainless steel
Boarding ladder	stainless steel
Deck shower	Two connection points
Anchor	Bruce   stainless steel
Anchor chain	40 M. stainless steel
Windlass	electrical   2008   Quick Antares 1000W
Outboard support	yes
Davits	stainless steel   for outboard on radar mast
Sea railing	wire   stainless steel wires
Grab rail (superstructure)	wood
Railing side opening gates	yes
Pushpit	yes
Pulpit	yes
Life raft	container   Plastimo
Life raft (pers)	container   4
Last life raft survey	Needs service



<b>Radar reflector</b>	yes
<b>Fenders</b>	yes
<b>Mooring lines</b>	yes
<b>Spare parts</b>	yes
<b>Tools</b>	yes
<b>TV receiver</b>	TV/FM Antenna in mast
<b>Radio-cd player</b>	Pioneer
<b>Cockpit speakers</b>	yes
<b>Speakers in salon</b>	yes
<b>Fire extinguisher</b>	yes

## RIGGING

<b>Rigging</b>	sloop
<b>Standing rigging</b>	wire   2026
<b>Brand mast</b>	Seldén
<b>Material mast</b>	aluminium
<b>Spreaders</b>	2 sets
<b>Mainsail</b>	yes
<b>Mainsail cover</b>	2015 new never used since
<b>Fully battened mainsail</b>	2015 never used since 38m2
<b>Genoa</b>	2015 never used since 52m2
<b>Genoa furler</b>	Furlex
<b>Code Zero</b>	2015 on furler   never used since
<b>Reefing System</b>	quick-one-line-reefing 2 lines
<b>Backstay adjuster</b>	yes
<b>Boomvang</b>	Rodkicker
<b>Genoa sheetwinches</b>	2x Andersen 56 st 2 speed
<b>Halyard winches</b>	2x Andersen 12 st on mast
<b>Multifunctional winches</b>	1x Andersen 46 st Electric
<b>Spi-pole</b>	aluminium On the mast
<b>Isolated backstay</b>	yes

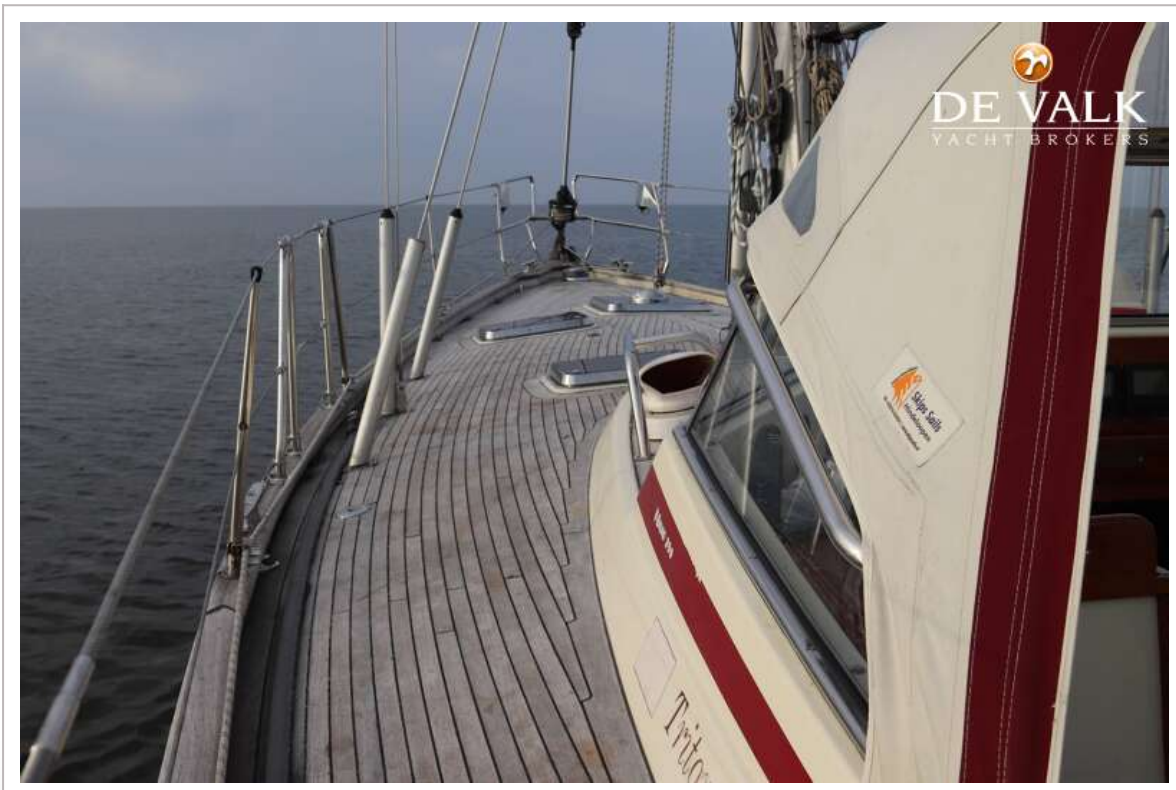


Extra info

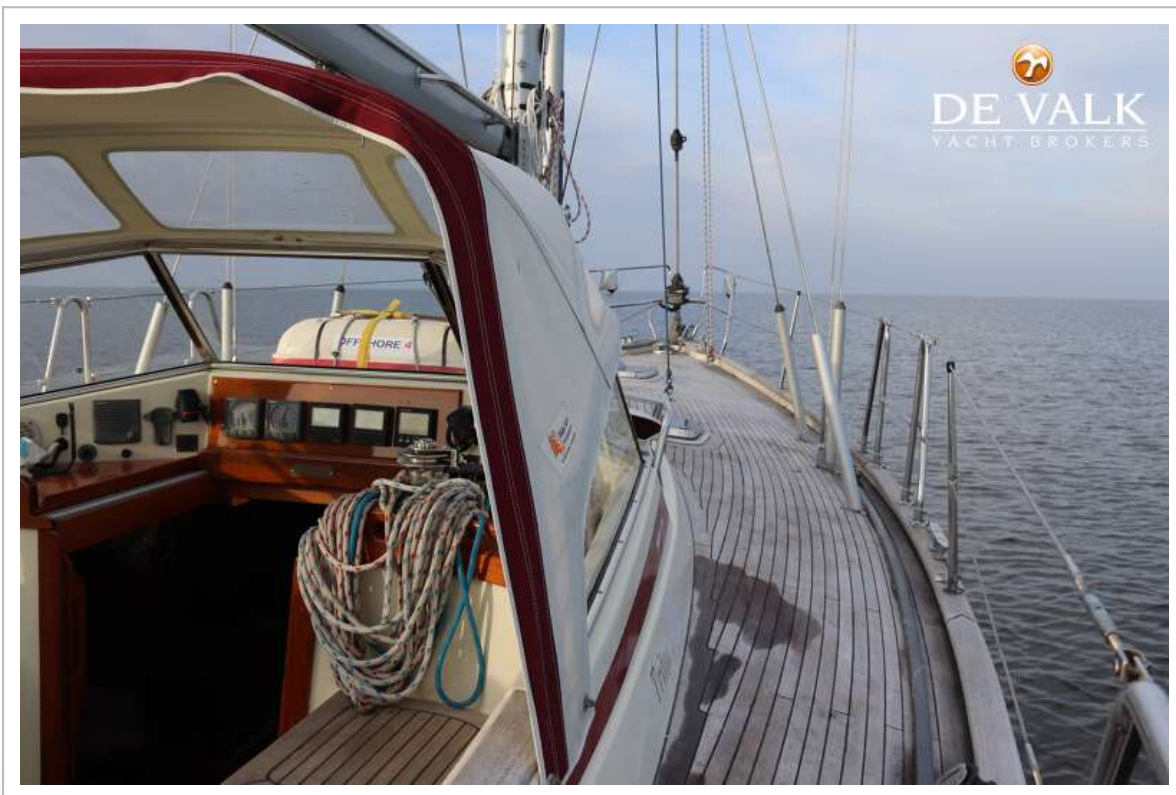
New Boom 2008 Selden



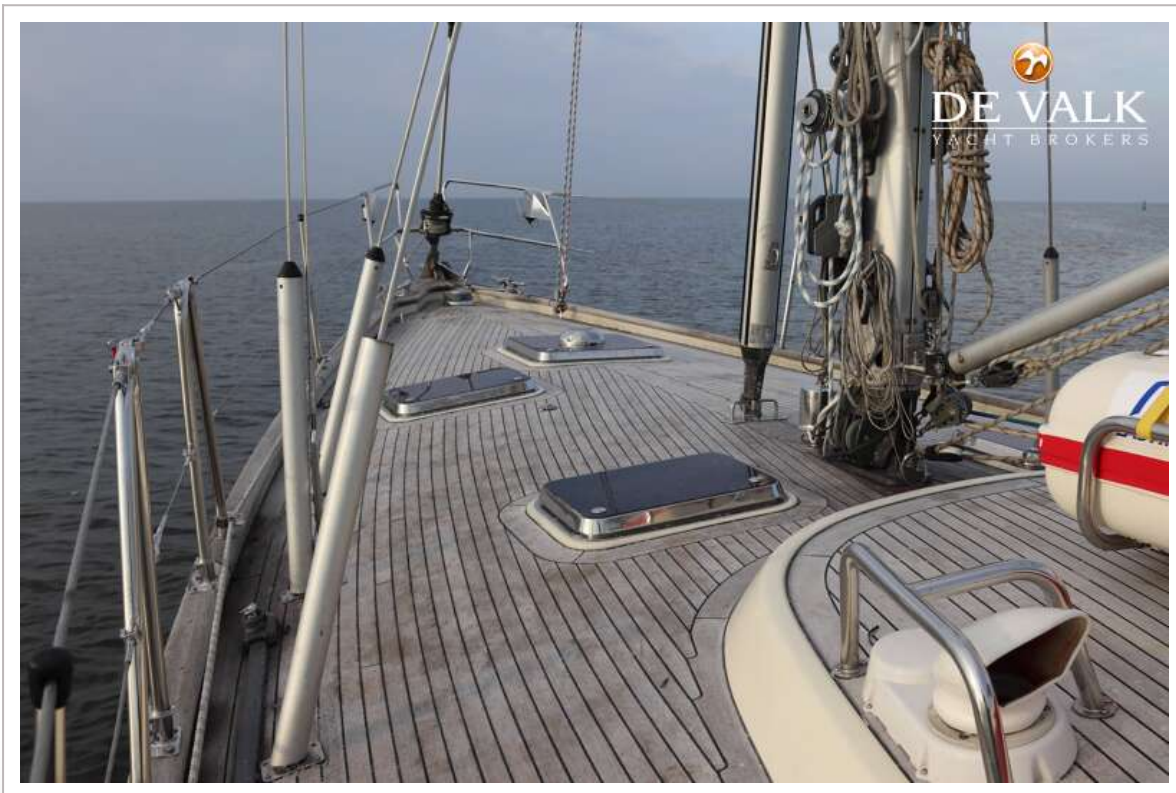
# NAJAD 390



# NAJAD 390



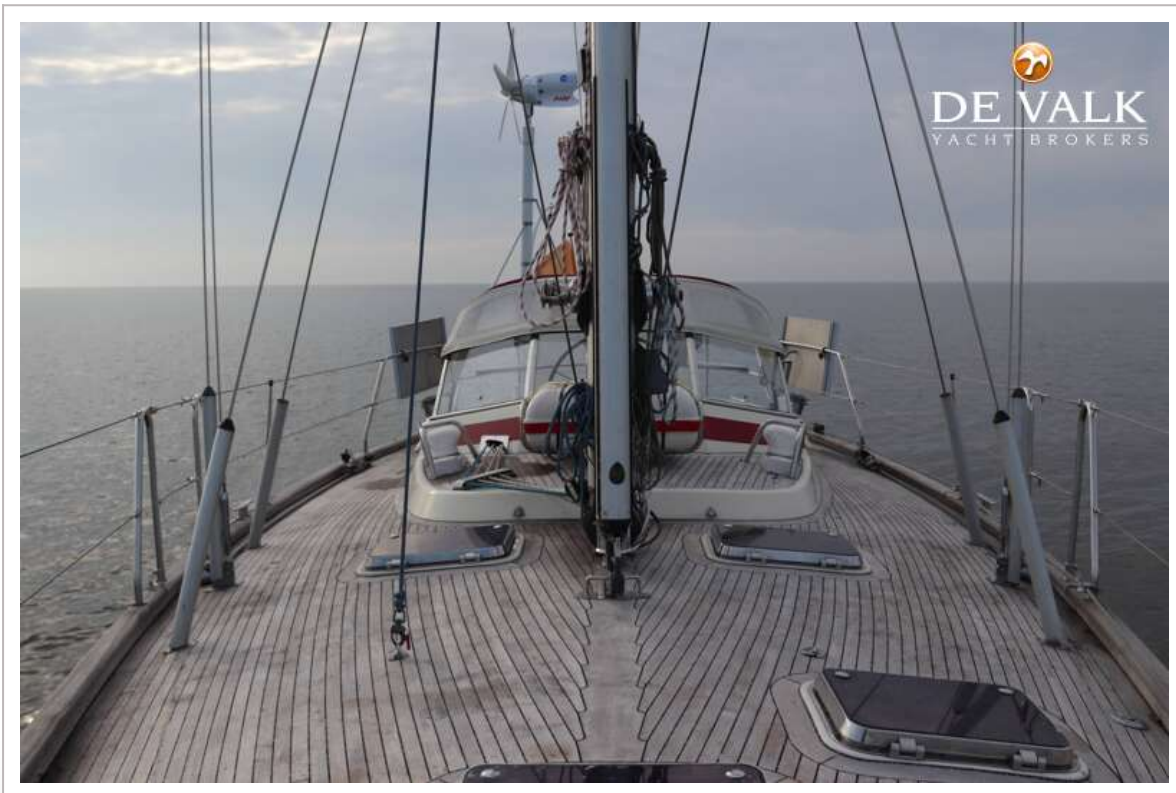
# NAJAD 390



# NAJAD 390



# NAJAD 390



# NAJAD 390



# NAJAD 390



# NAJAD 390



# NAJAD 390



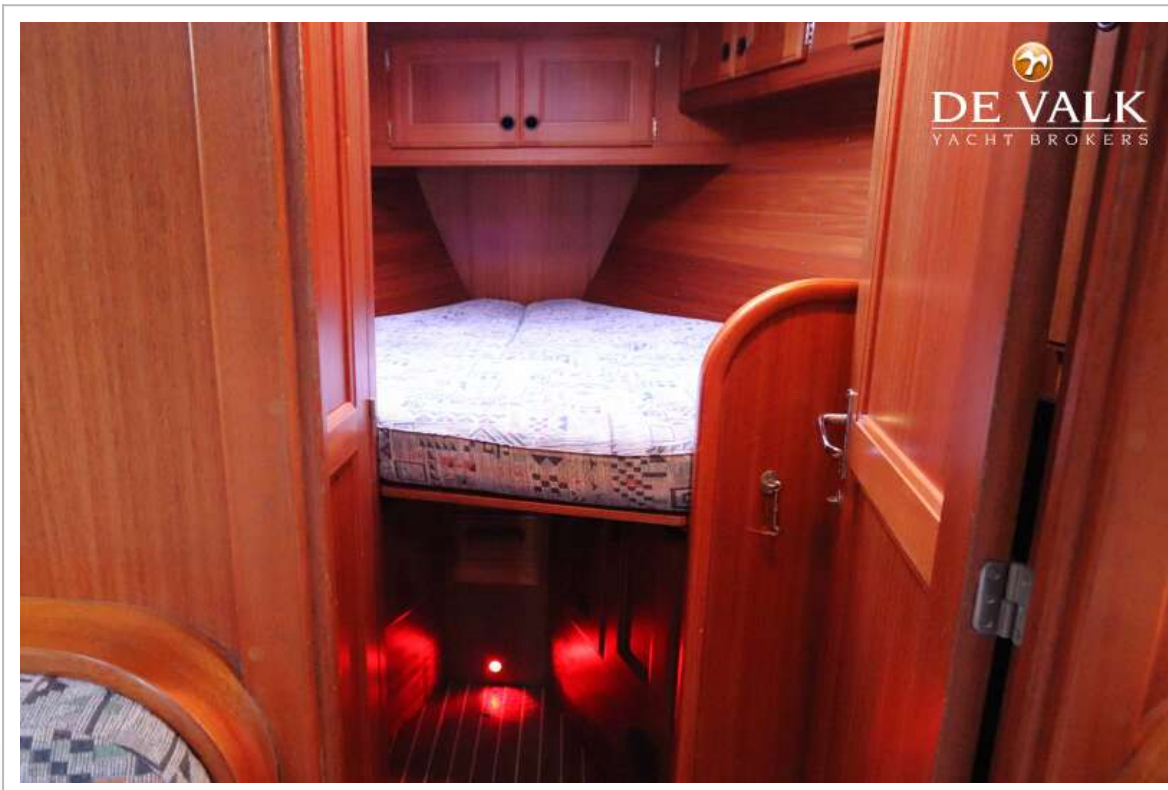
# NAJAD 390



# NAJAD 390



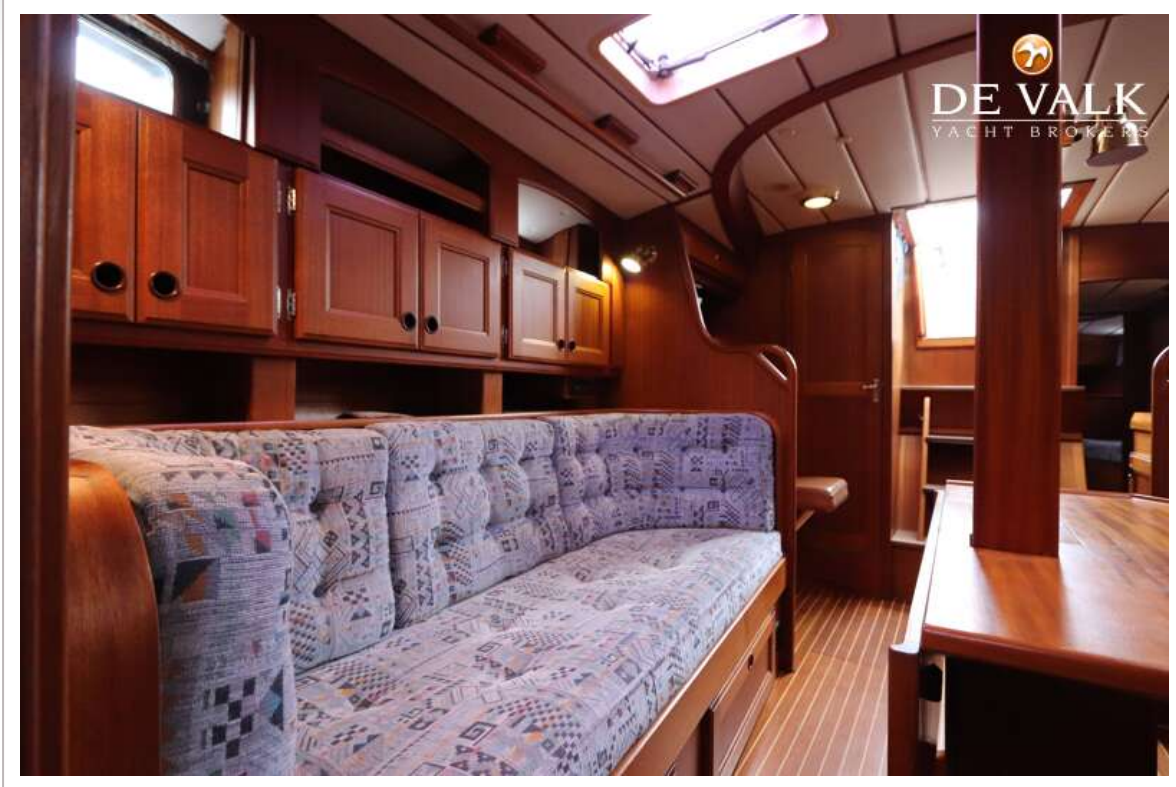
# NAJAD 390



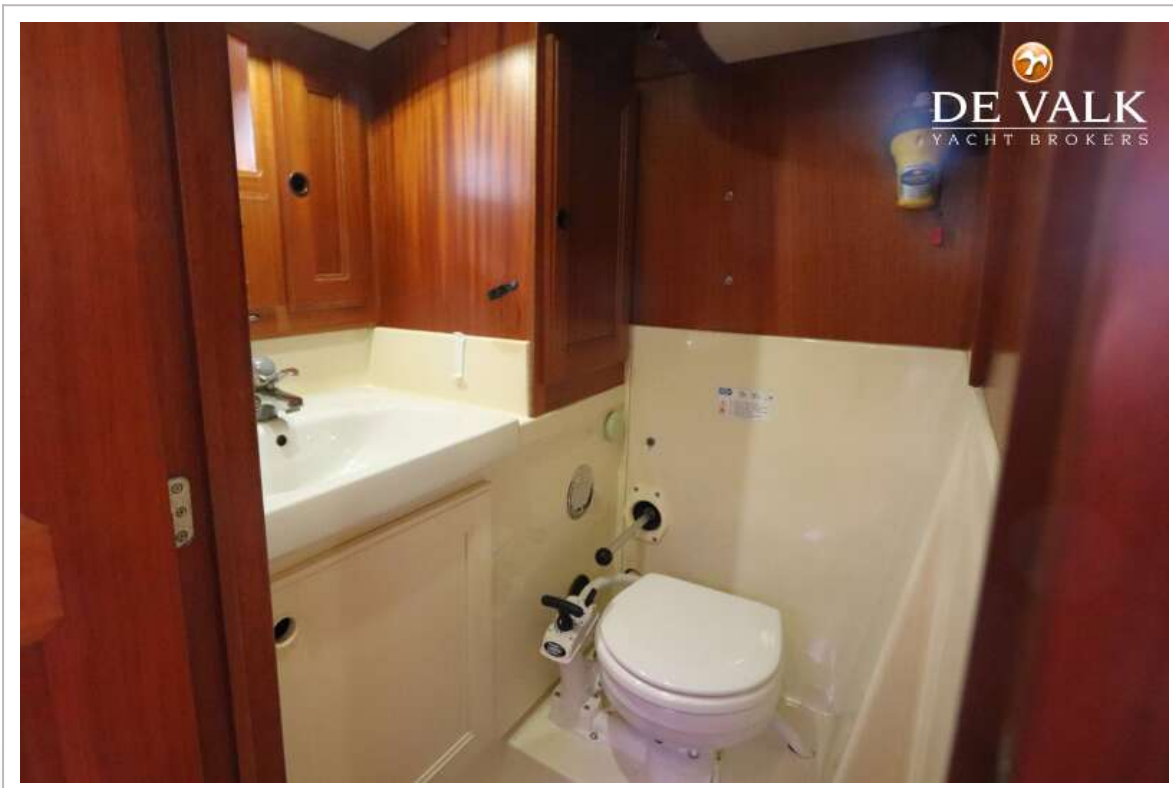
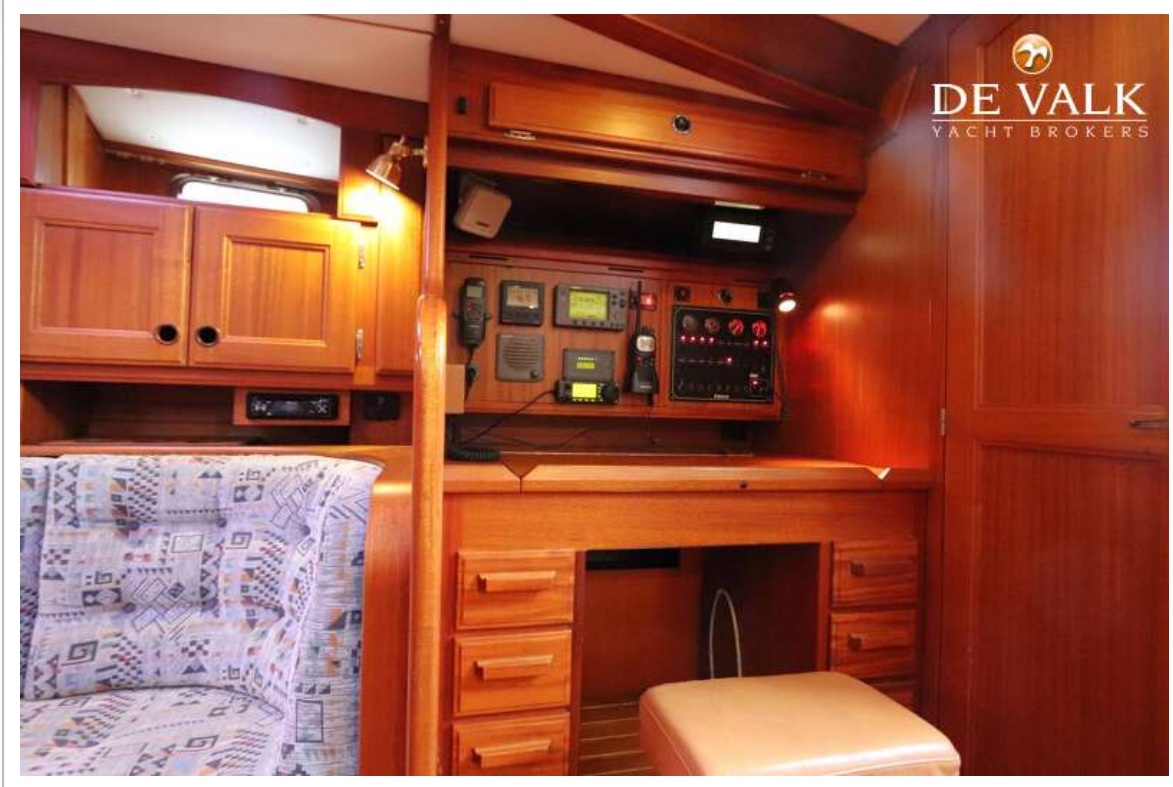
# NAJAD 390



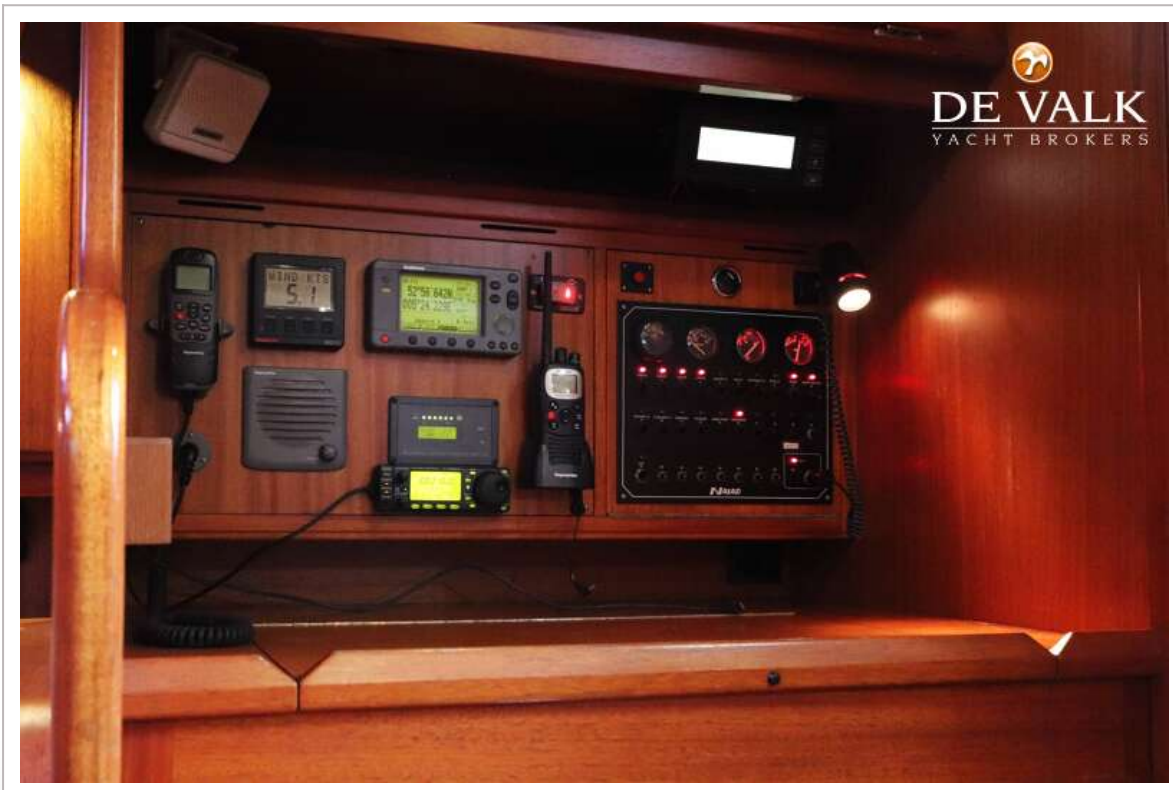
# NAJAD 390



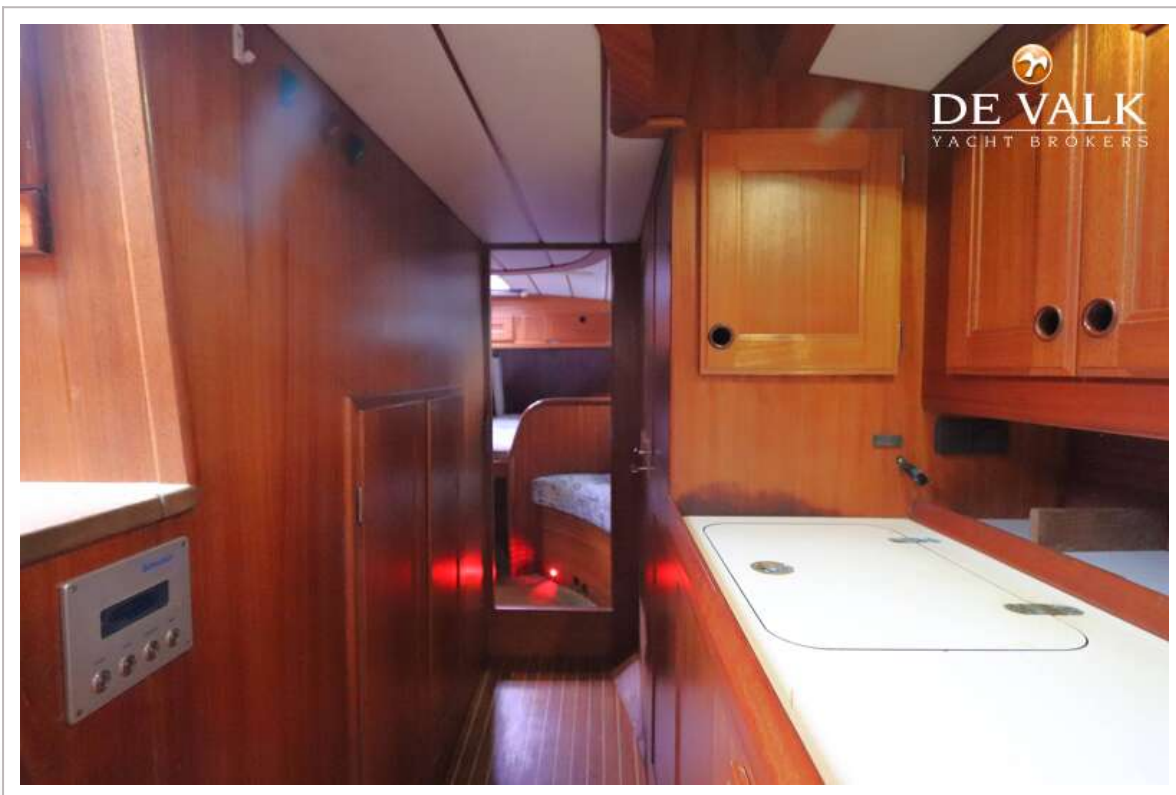
# NAJAD 390



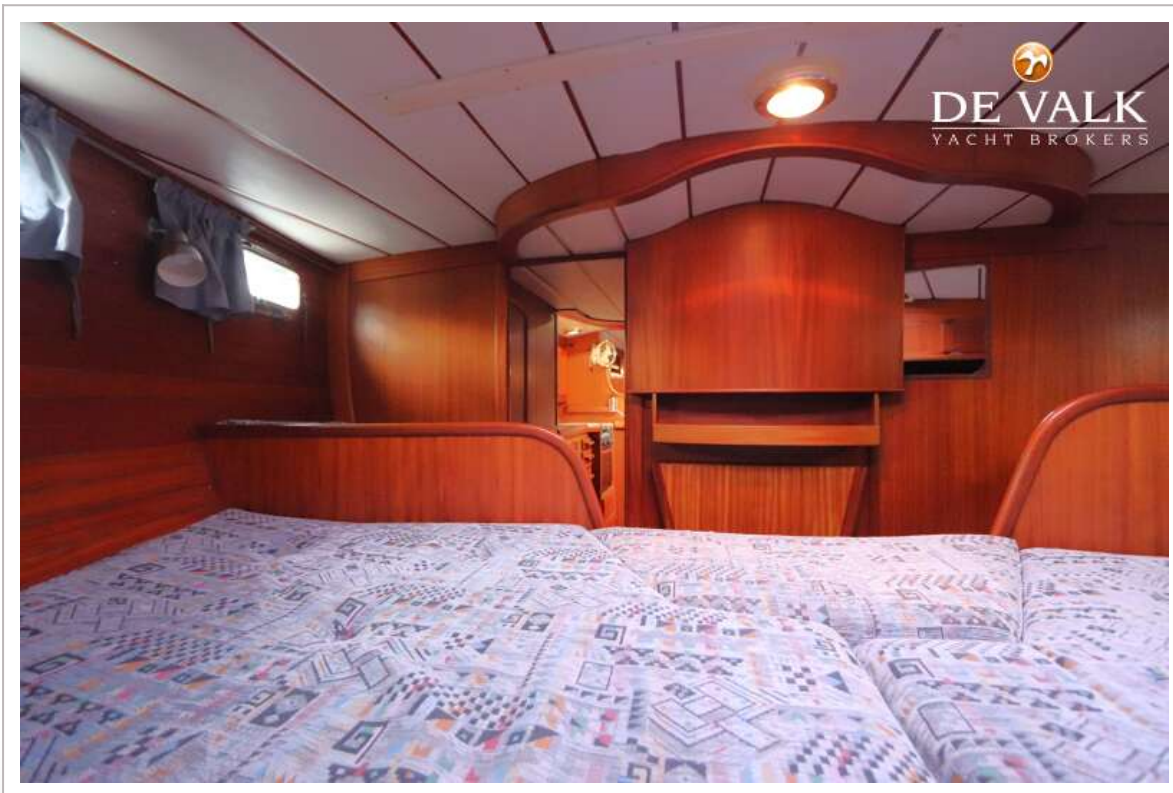
# NAJAD 390



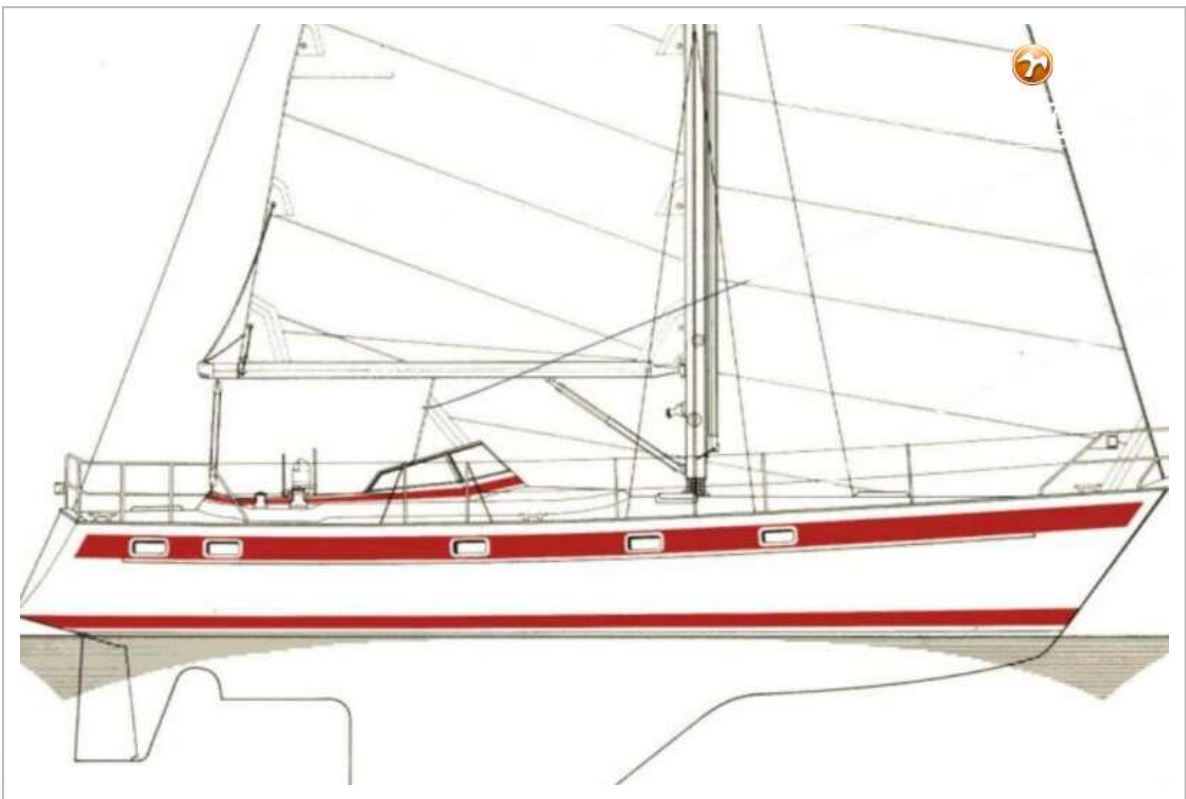
# NAJAD 390



# NAJAD 390



# NAJAD 390



# NAJAD 390

