



DE VALK
YACHT BROKERS



JAMES SILVER 68



DE VALK
YACHT BROKERS

BROKER'S COMMENTS

The classic M/Y RAIATEA is a beautifully crafted vessel built in 1938 by the renowned Scottish shipbuilder James A. Silver Ltd. of Rosneath. Exemplifying the elegant lines and fine craftsmanship typical of Silver's M/Yachts of the era, RAIATEA features a sturdy wooden hull, graceful sheer, & traditional profile that combine seaworthiness with timeless charm. Originally designed for comfortable coastal cruising, she represents the golden age of British yacht building, where attention to detail and quality materials were paramount. Today, RAIATEA is an example of classic yacht design & Heritage.

Sofia Ilia-Salvanou

SPECIFICATIONS

Dimensions	20.72 x 4.60 x 1.83 (m)	Builder	JAS. A. SILVER L. d / ROSNEATH
Built	1938	Cabins	5
Material	Teak	Berths	7
Engine(s)	2 x PERKINS SABRE diesel	Hp/Kw	2 x 220.00 (hp), 161.92 (kw)
Asking price	€ 270.000 (VAT Exempt)	Lying	elsewhere / Not at sales office

CONTACT

Sales office	De Valk Corfu	Telephone	(+30) 266 111 8095
Address	New Port of Corfu, near Gouvia Marina 490 83 Corfu GR	E-mail	corfu@devalk.nl

DISCLAIMER

These particulars are given in good faith as supplied but cannot be guaranteed.



JAMES SILVER 68

GENERAL

Model	JAMES SILVER 68
Type	motor yacht
LOA (m)	20,72
LWL (m)	19,27
Beam (m)	4,60
Draft (m)	1,83
Headroom (m)	1,85
Year built	1938
Builder	JAS. A. SILVER L. d / ROSNEATH
Country	Scotland
Designer	JOHN BAIN
Gross tonnage	28 t
Hull material	teak
Hull colour	white
Deck material	mahogany
Deck finish	teak
Antifouling (year)	2024
Window frame	wood
Window material	glass
Deckhatch	yes
Portholes	yes
Mast can be lowered	yes
Fuel tank (litre)	1200
Freshwater tank (litre)	2400
Blackwater tank (litre)	yes
Wheel steering	yes
Inside helm position	yes
Extra info	Restored by GARDINER MARINE in 2023

ACCOMMODATION



Cabins	5
Berths	7
Crew cabin	X 1
Crew berths	X1
Layout	4 cabins plus 1 crew, 3 Heads
Saloon	yes
Air-conditioning	yes
Aft Cabin	yes
Dining room	yes
Dinette	yes
Opening door to cockpit	yes
Opening door to aft deck	yes
Galley	yes
Countertop	yes
Sink	yes
Cooker	yes
Oven	yes
Extractor	yes
Fridge	yes
Freezer	yes
Hot water system	yes
Water pressure system	yes
Coffee maker	yes
Crockery	yes
Owners cabin	twin single
Wardrobe	yes
Bathroom	separate
Toilet	separate
Wash basin	in the cabin
Shower	separate
Bath tub	separate
Guest cabin 1	single bed



JAMES SILVER 68

Wardrobe	yes
Bathroom	separate
Toilet	separate
Wash basin	in the cabin
Shower	separate
Bath tub	separate
Guest cabin 2	single bed
Wardrobe	yes
Bathroom	separate
Toilet	separate
Wash basin	in the cabin
Shower	separate
Bath tub	separate
Guest cabin 3	bunk bed X 2
Wardrobe	yes
Bathroom	Separate
Toilet	separate
Wash basin	in the cabin
Shower	separate
Crew cabin(s)	X1
Bathroom (crew)	yes
Toilet (crew)	yes
Wash basin	in the bathroom
Shower (crew)	yes
Washing machine	yes

MACHINERY

No of engines	2
Make	PERKINS
Type	SABRE
HP	220



JAMES SILVER 68

kW	161.92
Fuel	diesel
Year of overhaul	2023 The original Gardner 6LW restored, coupled to ZF Gear boxes
Maximum speed (kn)	10
Cruising speed (kn)	9
Consumption (l/hr)	25
Drive	shaft
Generator	8 Kw
Batteries	yes
Start battery	yes
Service battery	yes
Shorepower	with cable

NAVIGATION

Compass	yes
Depth sounder	yes
Windset	yes
VHF	yes
Plotter/GPS	yes
Navigation lights	yes

EQUIPMENT

Sun awning	yes
Cockpit cushions	yes
Cockpit table	yes
Cockpit chairs	yes
Bathing platform	NO
Boarding ladder	yes
Gangway	yes
Deck shower	yes



Anchor	yes
Anchor chain	yes
Anchor 2	yes
Anchor chain	yes
Windlass	yes
Deck wash	yes
Dinghy	3,30 m
Outboard	EVINRUDE 8Hp
Davits	X 2
Sea railing	yes
Grab rail (superstructure)	yes
Life raft	yes
Life raft (pers)	8
Lifejackets	yes
Lifebuoy	yes
Binocular	yes
Fenders	yes
Mooring lines	yes
Radio-cd player	yes
Fire extinguisher	X 10 powder & CO2



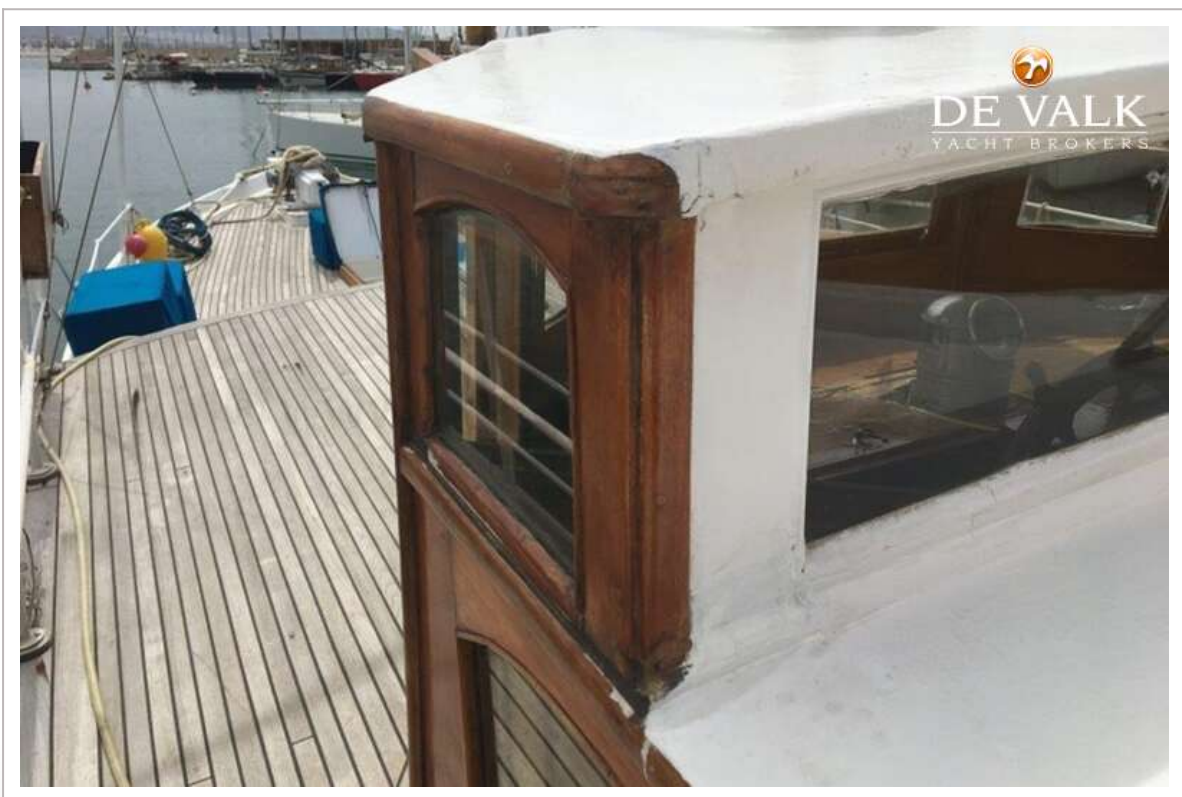
JAMES SILVER 68

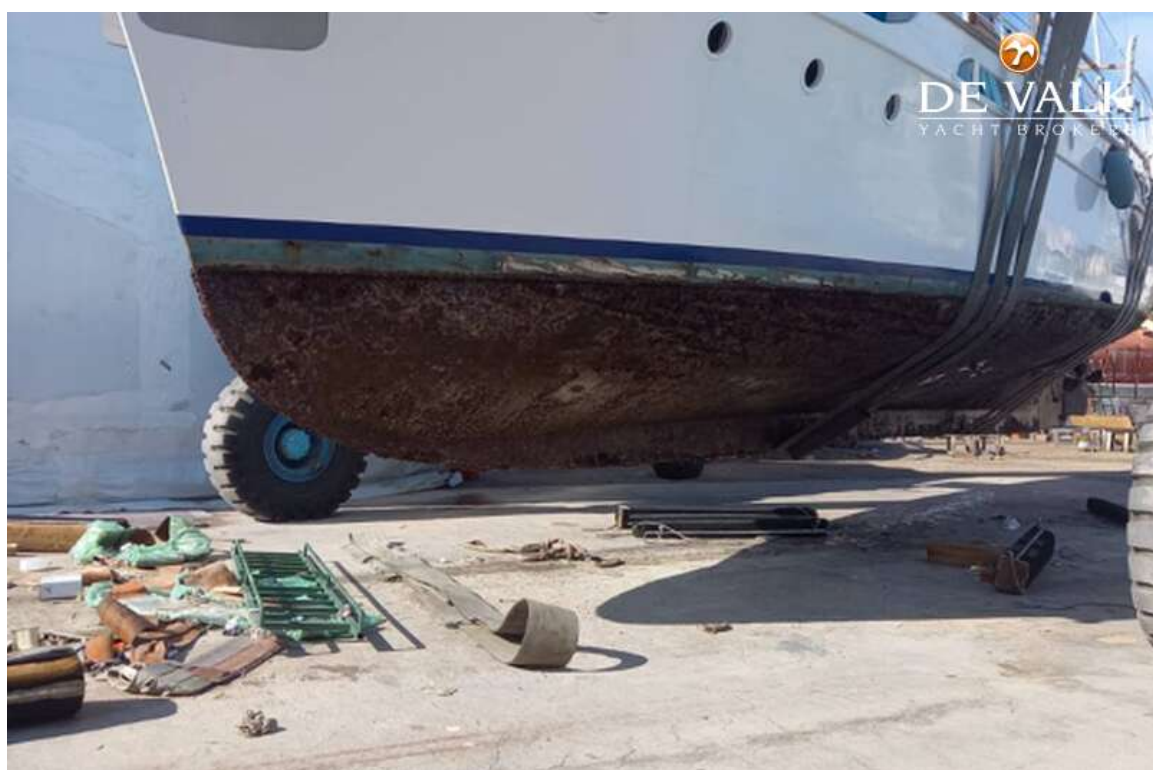




JAMES SILVER 68

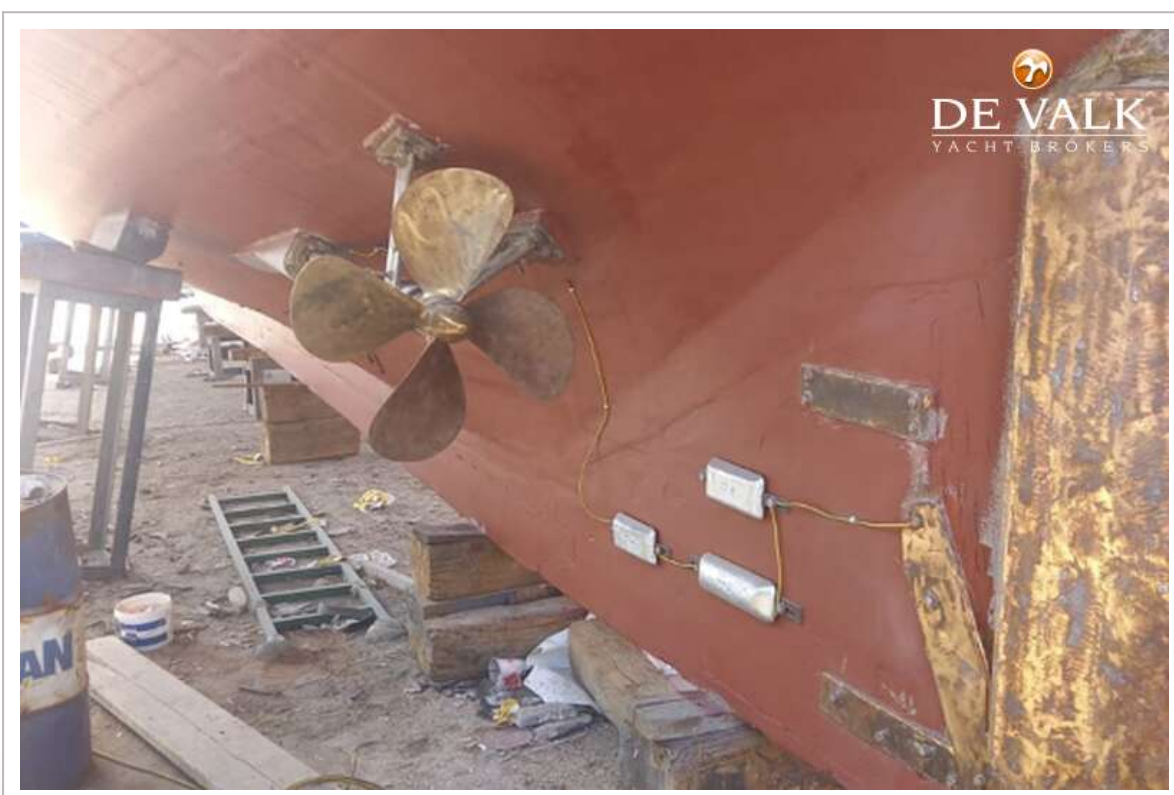
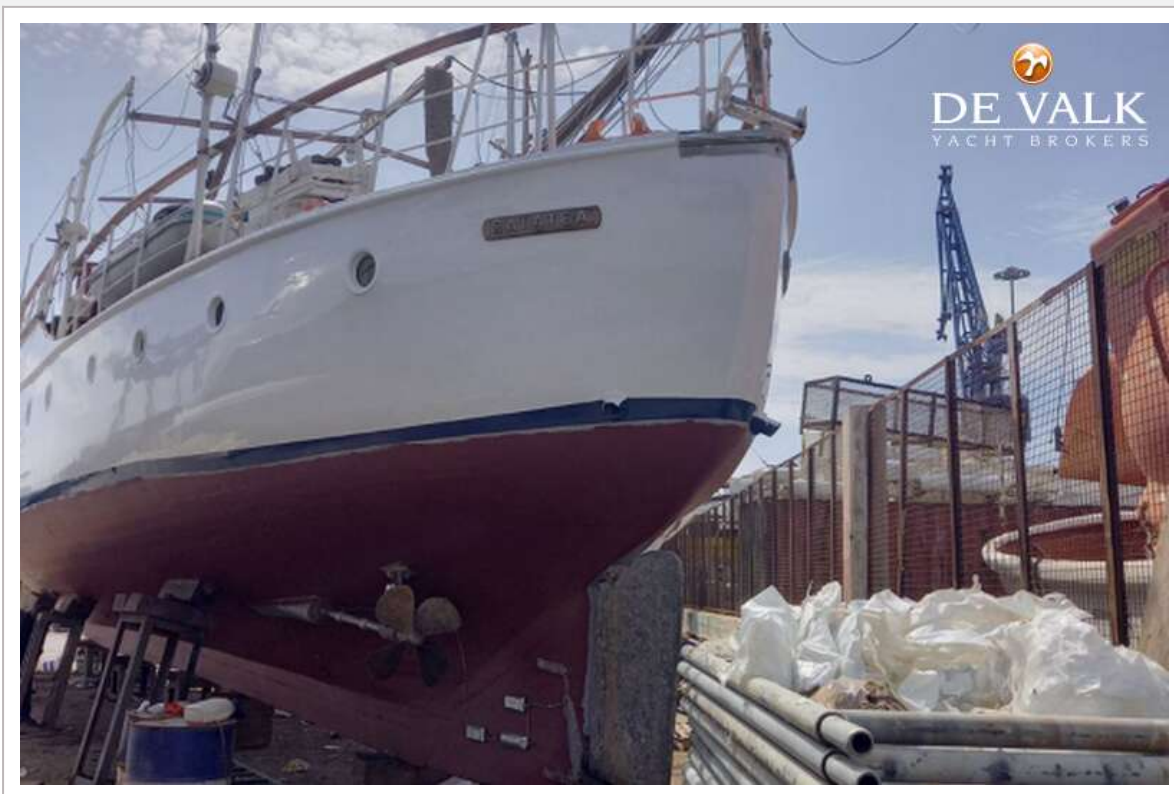




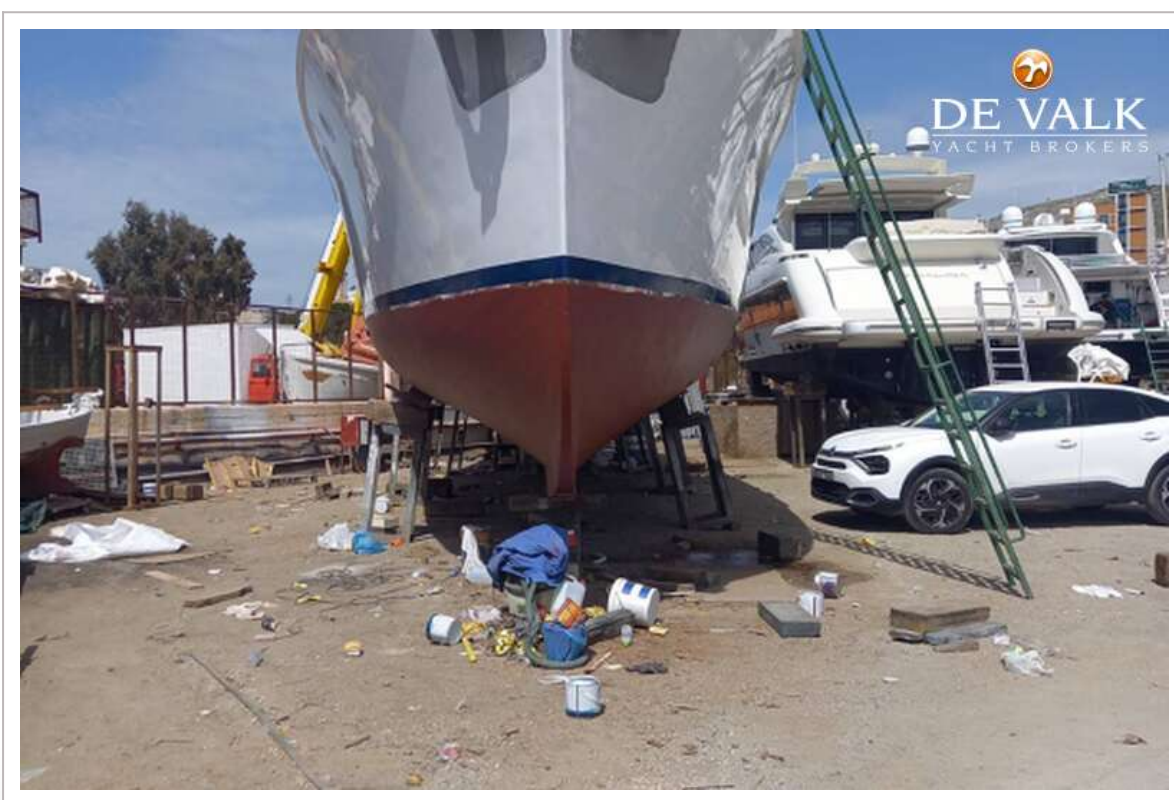
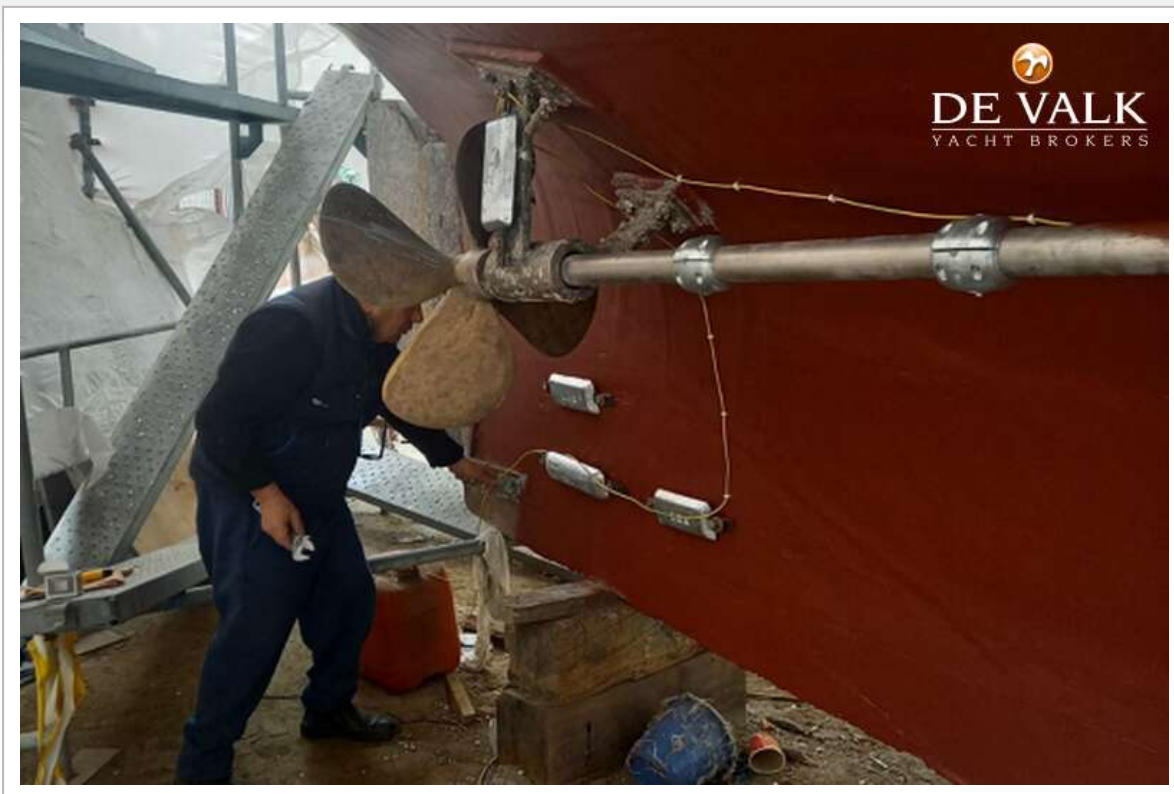


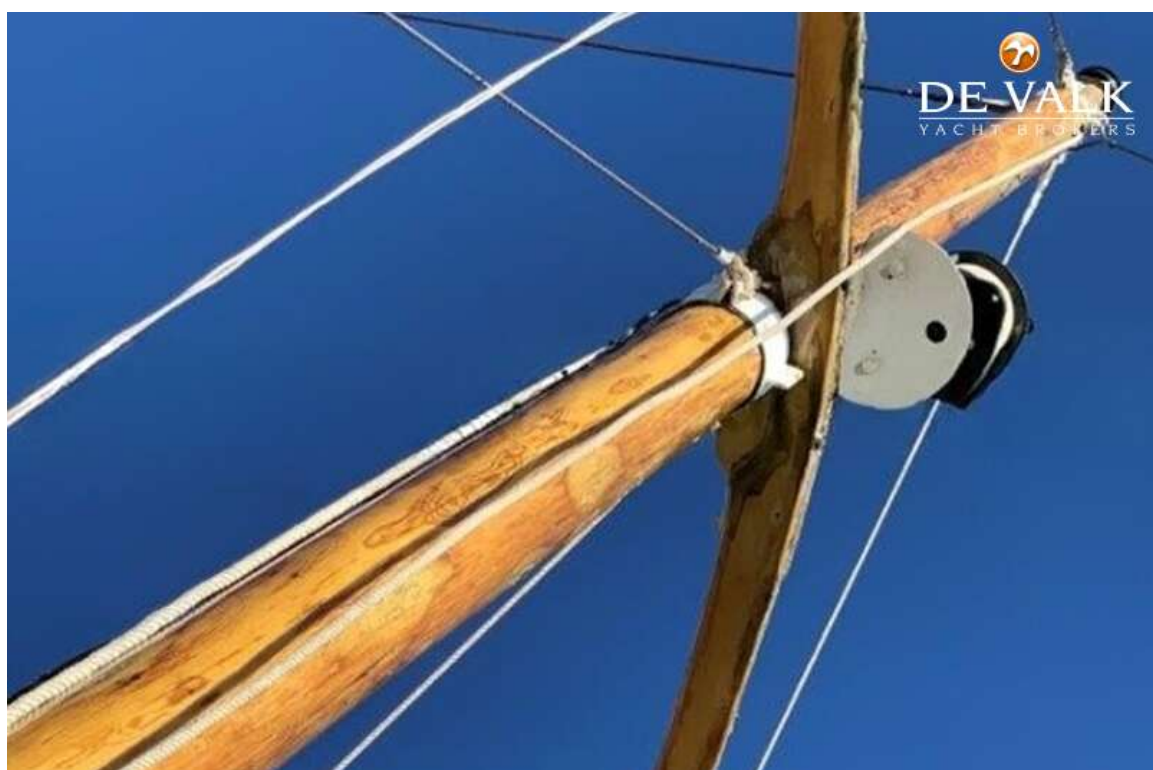


JAMES SILVER 68



JAMES SILVER 68





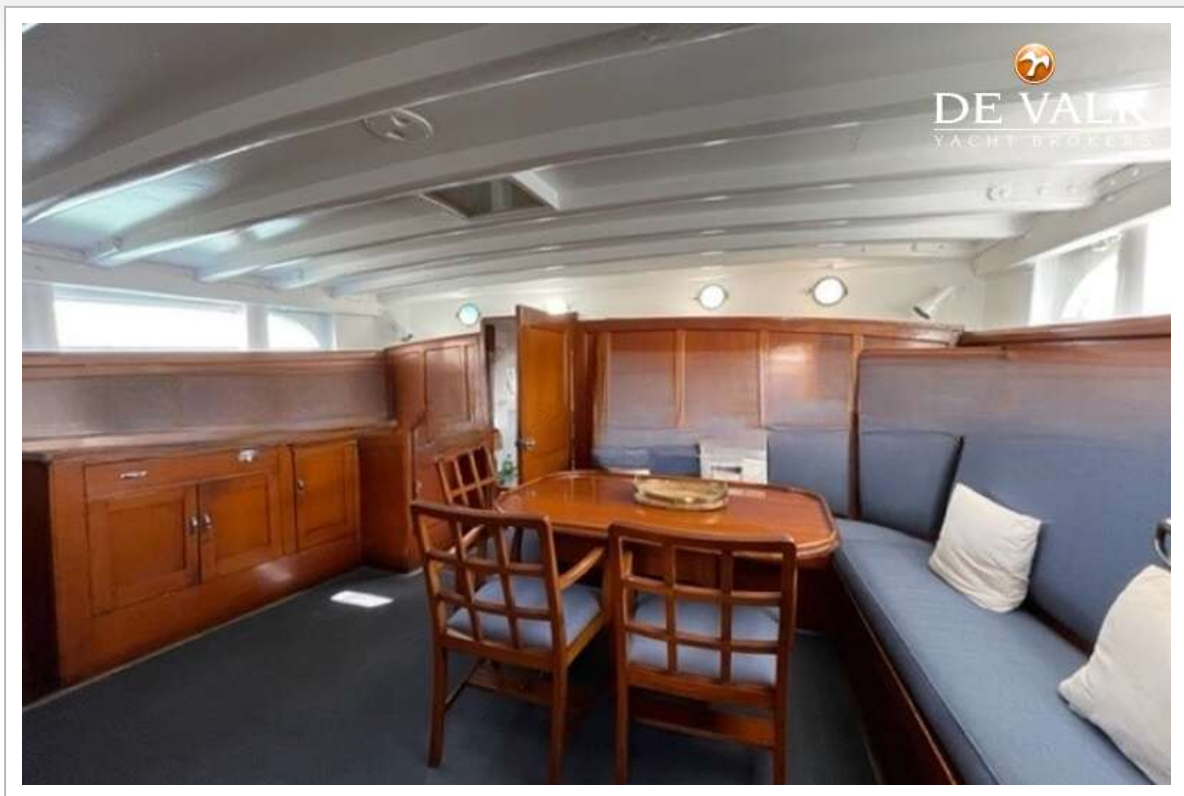
JAMES SILVER 68



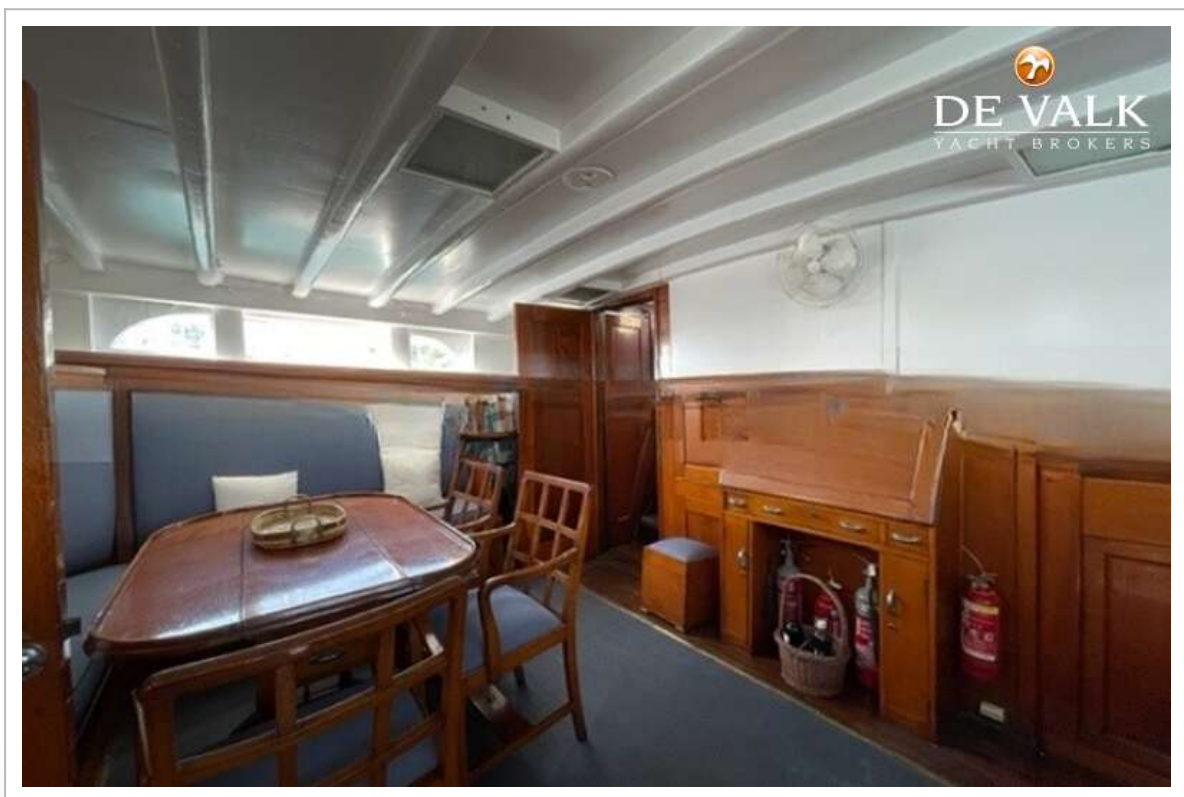
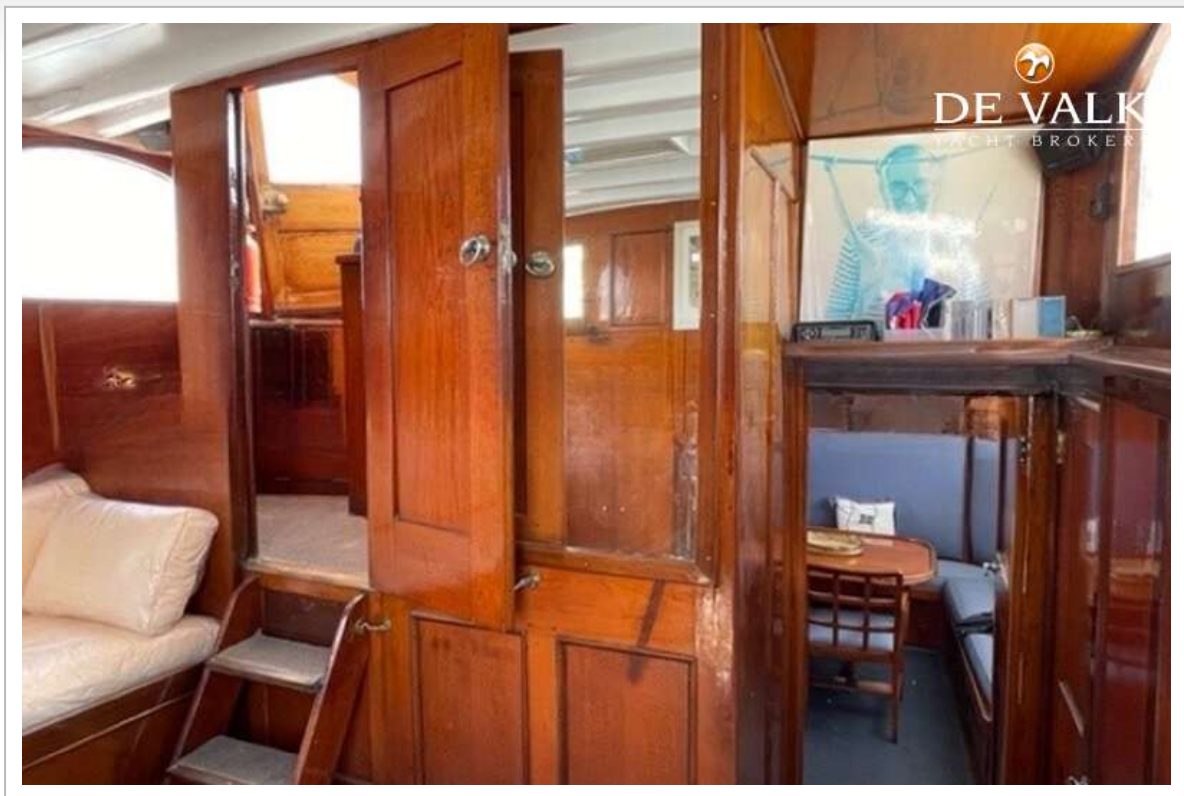
JAMES SILVER 68

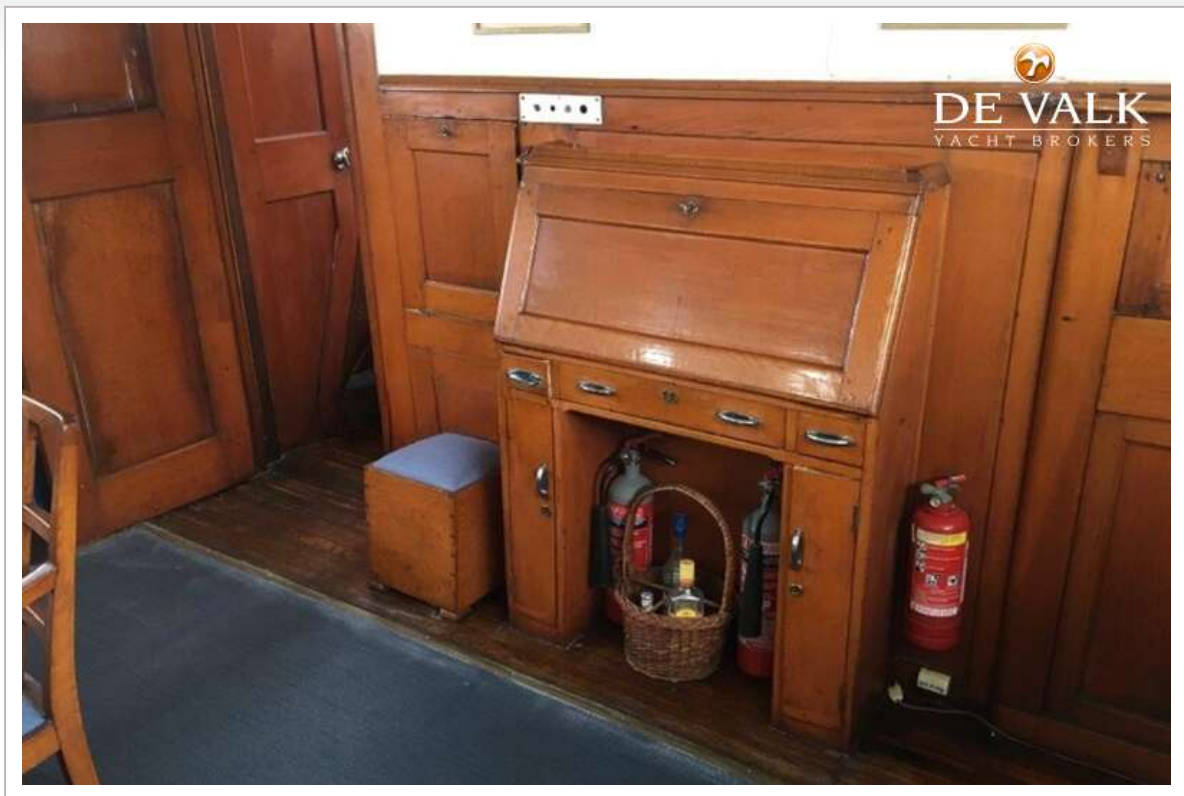


JAMES SILVER 68



JAMES SILVER 68







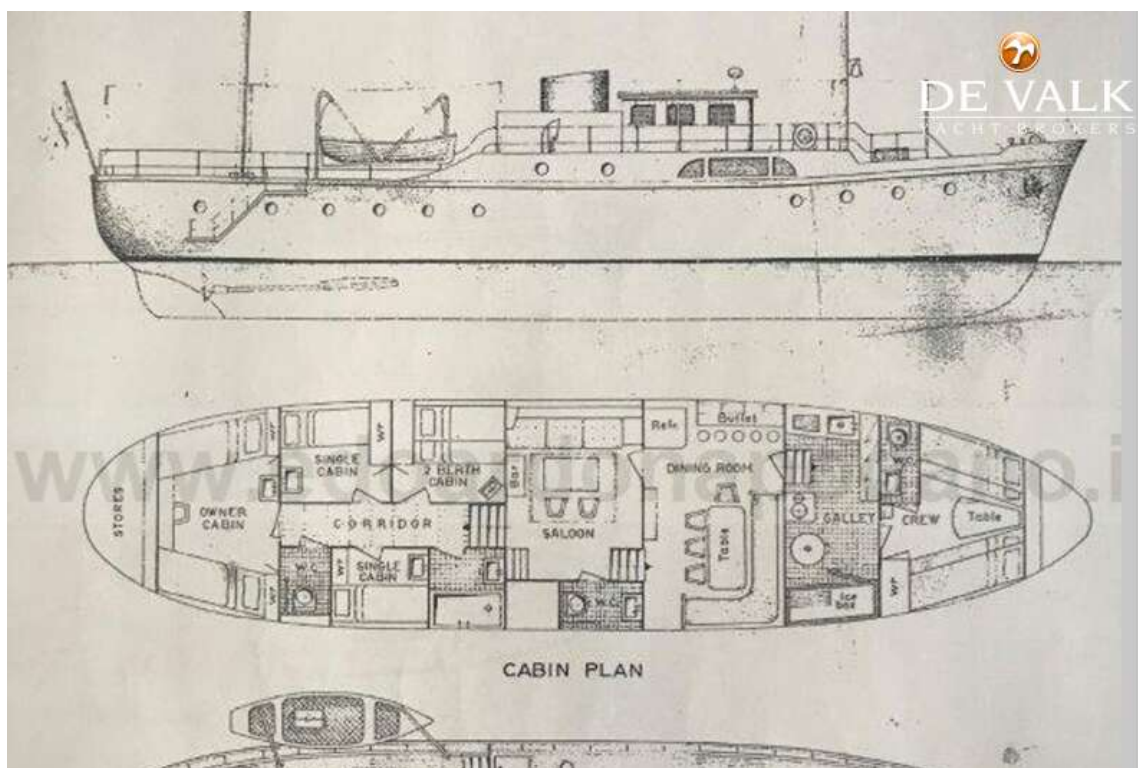
JAMES SILVER 68







JAMES SILVER 68



JAMES SILVER 68



