



## DE VRIES LENTSCH 5, FEADSHIP



DE VALK  
YACHT BROKERS

# DE VRIES LENTSCH 5, FEADSHIP

## BROKER'S COMMENTS

Timeless elegance and proven seaworthiness, a 21.43-meter 1978 Feadship. Powered by twin 370?hp Cummins turbo diesel engines, equipped with hydraulic stabilizers, six independent air conditioning units, and a robust technical setup, she offers both reliable cruising capabilities and exceptional onboard comfort. Her layout includes a full-beam master suite, two guest cabins, two recently renovated bathrooms, a fully equipped galley, and a spacious saloon with original woodwork. The yacht has successfully operated as a tourist rental, generating consistent income.

*Roberto Kelly*

## SPECIFICATIONS

<b>Dimensions</b>	21.43 x 4.34 x 1.20 (m)	<b>Builder</b>	Feadship
<b>Built</b>	1978	<b>Cabins</b>	
<b>Material</b>	Steel	<b>Berths</b>	
<b>Engine(s)</b>	2 x Cummins Turbo Diesel diesel	<b>Hp/Kw</b>	2 x 370.00 (hp), 272.32 (kw)
<b>Asking price</b>	€ 280.000 (VAT Exempt)	<b>Lying</b>	

## CONTACT

<b>Sales office</b>	De Valk Barcelona	<b>Telephone</b>	+34 932 202 825
<b>Address</b>	Barcelona region 08392 Barcelona ES	<b>E-mail</b>	barcelona@devalk.nl

## DISCLAIMER

These particulars are given in good faith as supplied but cannot be guaranteed.



# DE VRIES LENTSCH 5, FEADSHIP

## GENERAL

Model	DE VRIES LENTSCH 5, FEADSHIP
Type	motor yacht
LOA (m)	21,43
Beam (m)	4,34
Draft (m)	1,20
Year built	1978
Builder	Feadship
Country	The Netherlands
Designer	Willem De Vries Lentsch
Displacement (t)	60
Hull material	steel
Hull colour	white
Hull shape	hard chine
Superstructure material	wood
Deck material	teak
Deck finish	teak
Superstructure deck finish	teak
Cockpit deck finish	teak
Antifouling (year)	Nov-2024
Window frame	stainless steel
Window material	glass
Portholes	stainless steel
Fuel tank (litre)	steel 2x500
Fuel tank 2 (litre)	steel 2x1000
Level indicator (fuel tank)	yes
Freshwater tank (litre)	1000
Blackwater tank (litre)	epoxy 100

## ACCOMMODATION

Heating	central heating
---------	-----------------



# DE VRIES LENTSCH 5, FEADSHIP

Heating 2	yes
Air-conditioning	6 independent
Navigation center	yes
Chart table	yes
Dining room	yes
Galley	yes
Countertop	granite L Shape
Sink	stainless steel New drains
Cooker	electric
Microwave	New
Fridge	New
Hot water system	Boiler 100L reservoir
Water pressure system	electrical Hydrophore
Owners cabin	double bed
Wardrobe	hanging/drawers/shelves
Bathroom	en suite
Toilet	en suite
Toilet system	electric
Shower	en suite
Guest cabin 1	bunk bed
Wardrobe	hanging/drawers/shelves
Guest cabin 2	bunk bed
Wardrobe	hanging/drawers/shelves
Bathroom	en suite
Toilet	en suite
Toilet system	electric
Shower	en suite

## MACHINERY

No of engines	2
Make	Cummins



# DE VRIES LENTSCH 5, FEADSHIP

Type	Turbo Diesel
HP	370
kW	272.32
Fuel	diesel
Year installed	1978
Engine cooling system	seawater
Propeller type	fixed 2x
Propeller blades	3
Shaft lubrication	water
Electric bilge pump	6
Generator	Mitsubishi Diesel
Start battery	2 new
Service battery	8 new
Battery monitor	yes
Battery charger/inverter	yes
Shorepower	with cable
Stabilizers	fin 2x hydraulic
Extra info	Last Service May 2025 for both engines.
Extra info	Outdated engine room

## NAVIGATION

Compass	yes
VHF	yes
Radar	yes
Navigation lights	yes
Extra info	Outdated instruments

## EQUIPMENT

Fixed hardtop	yes
Bimini	yes
Cockpit cushions	yes



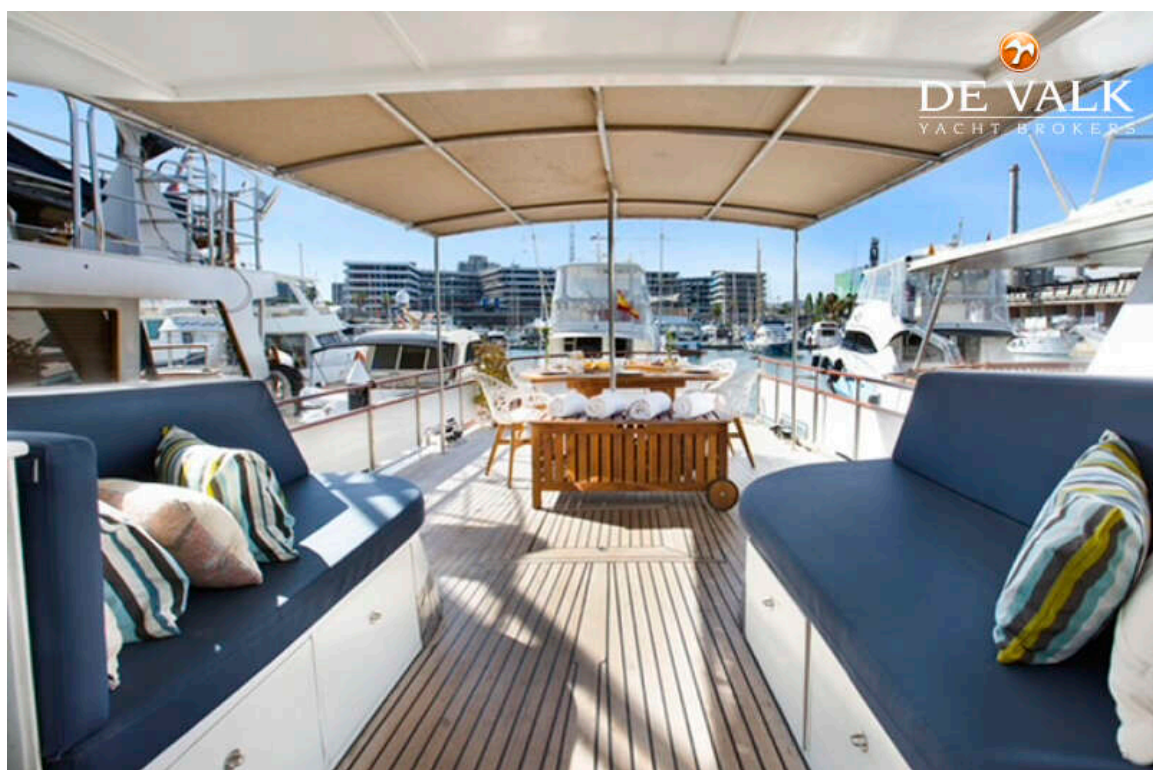
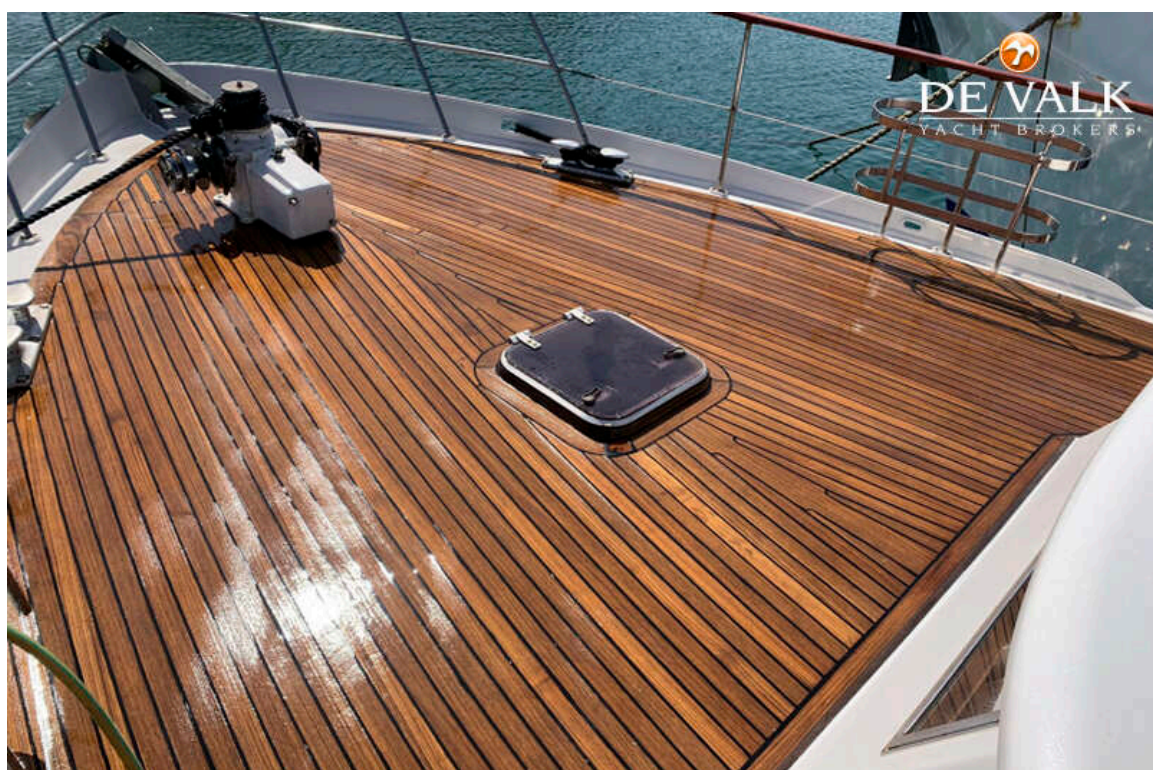
Cockpit table	yes
Cockpit chairs	yes
Bathing platform	yes
Boarding ladder	yes
Anchor	CQR Plough 100kg
Anchor chain	75m
Windlass	electrical With remote control
Davits	stainless steel
Sea railing	stainless steel
Grab rail (superstructure)	stainless steel



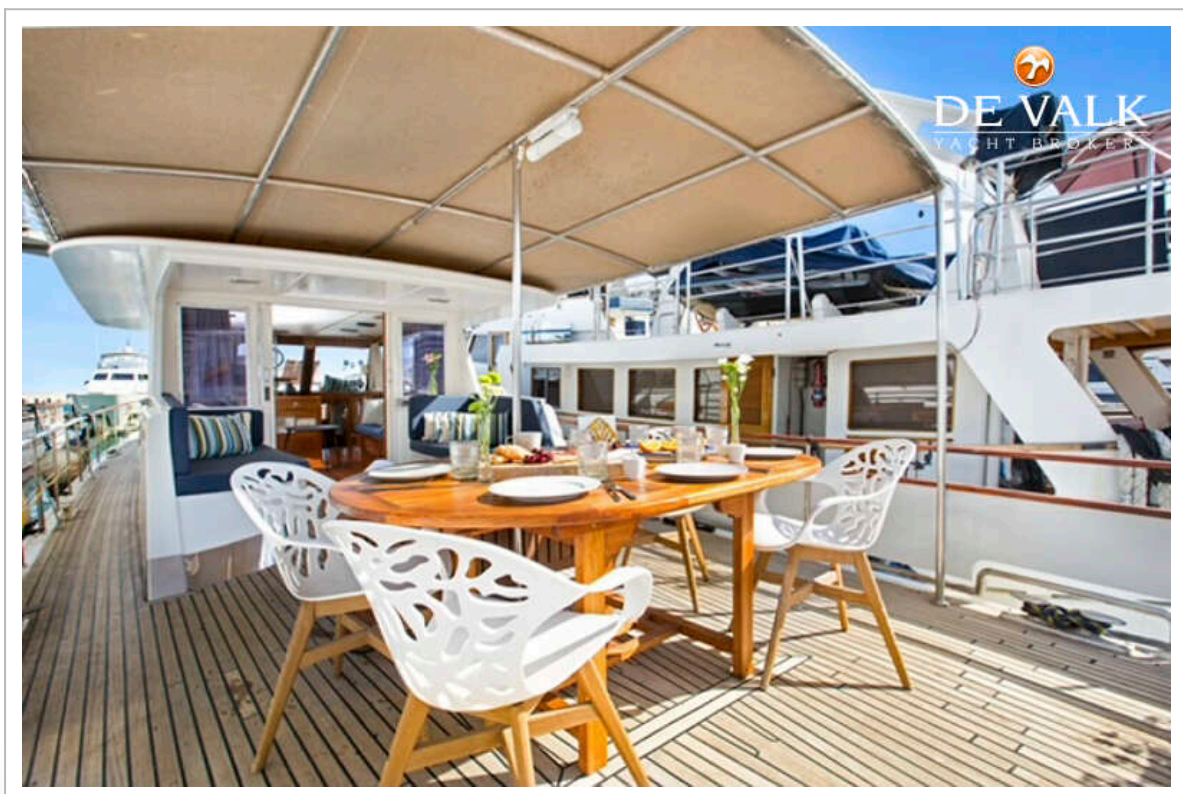
# DE VRIES LENTSCH 5, LEADSHIP

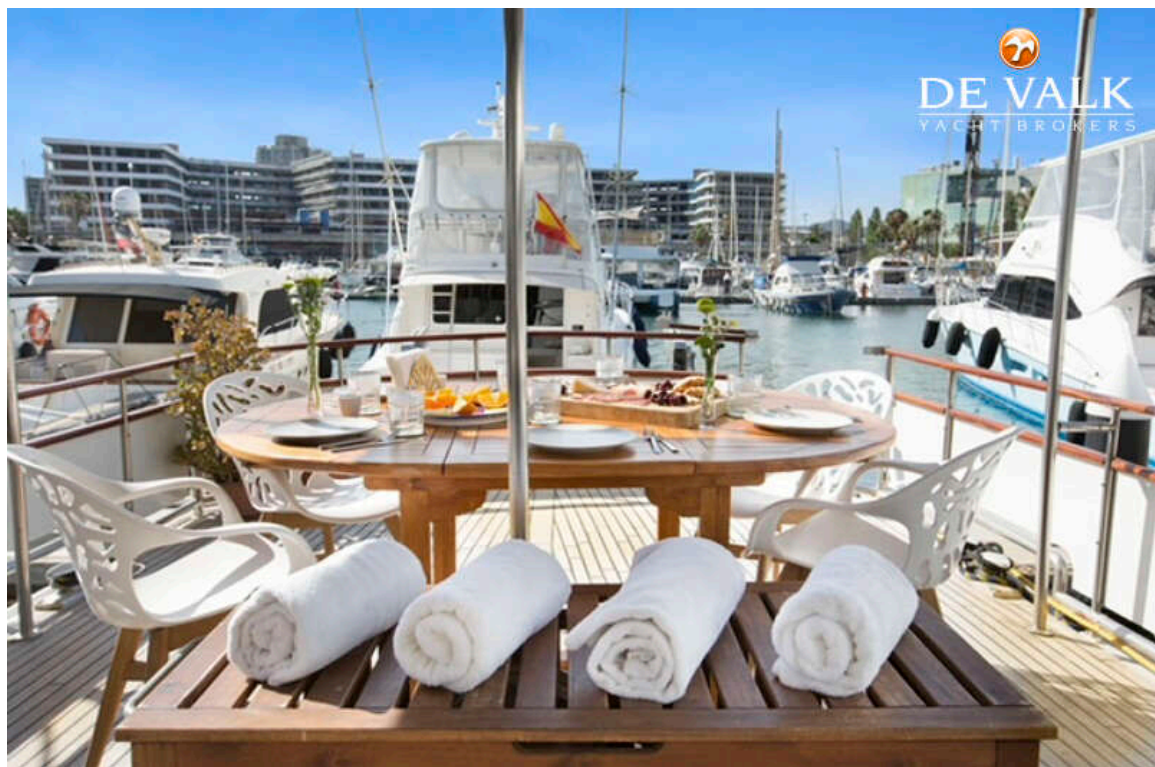


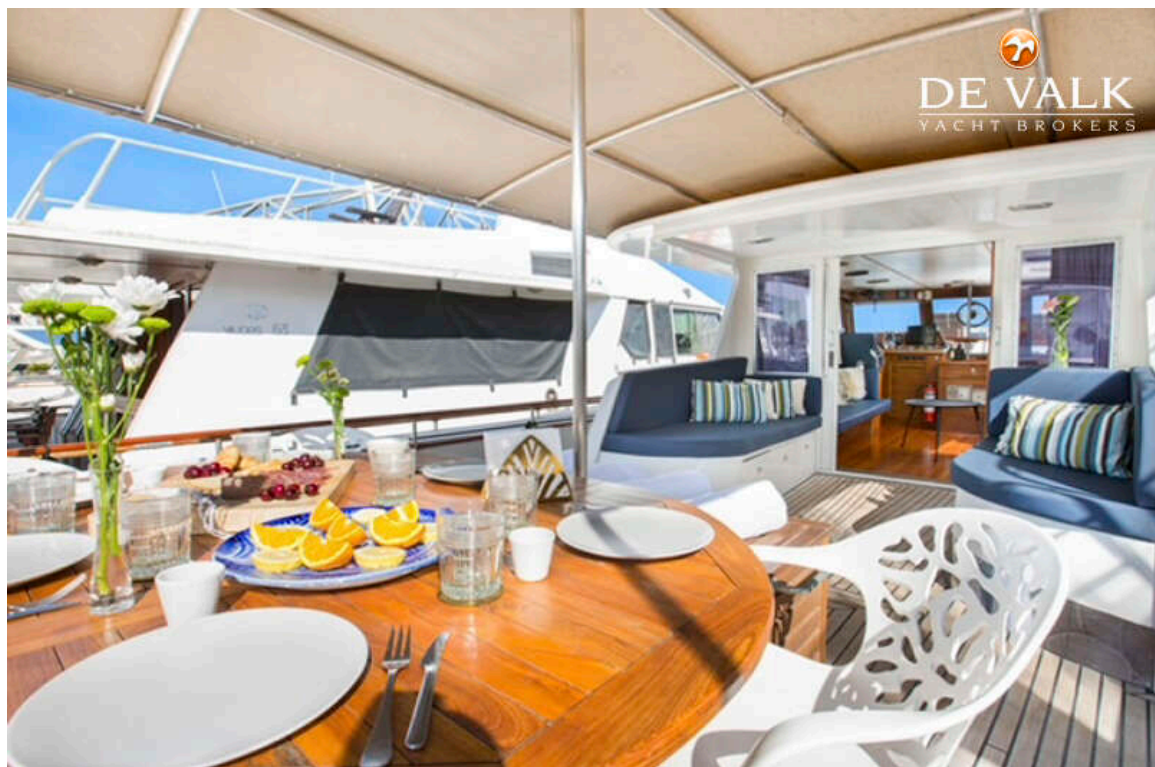
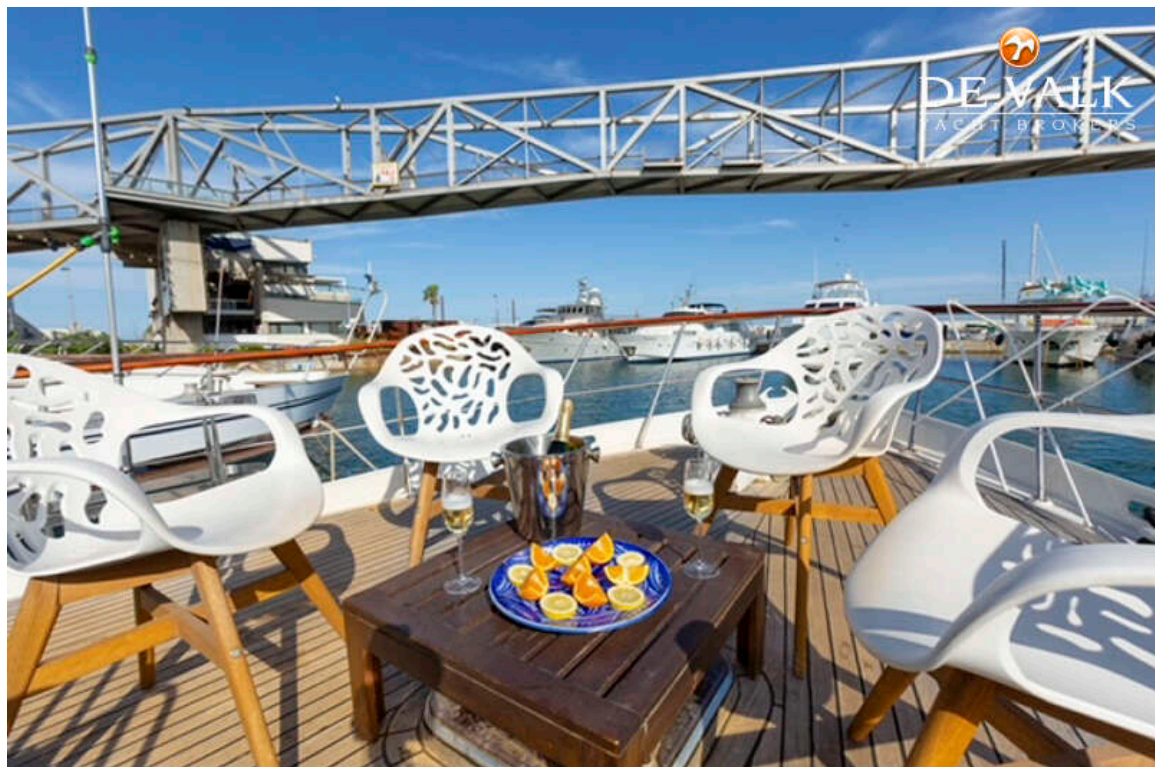
## DE VRIES LENTSCH 5, LEADSHIP

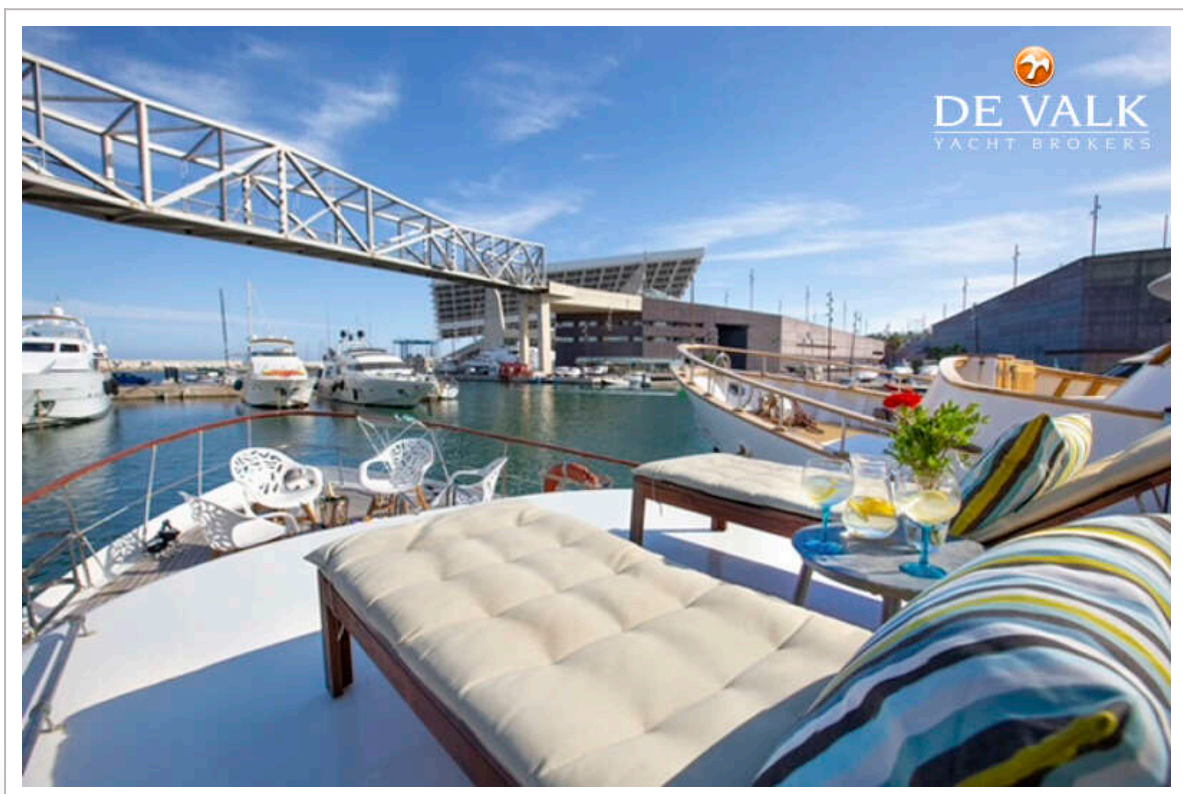
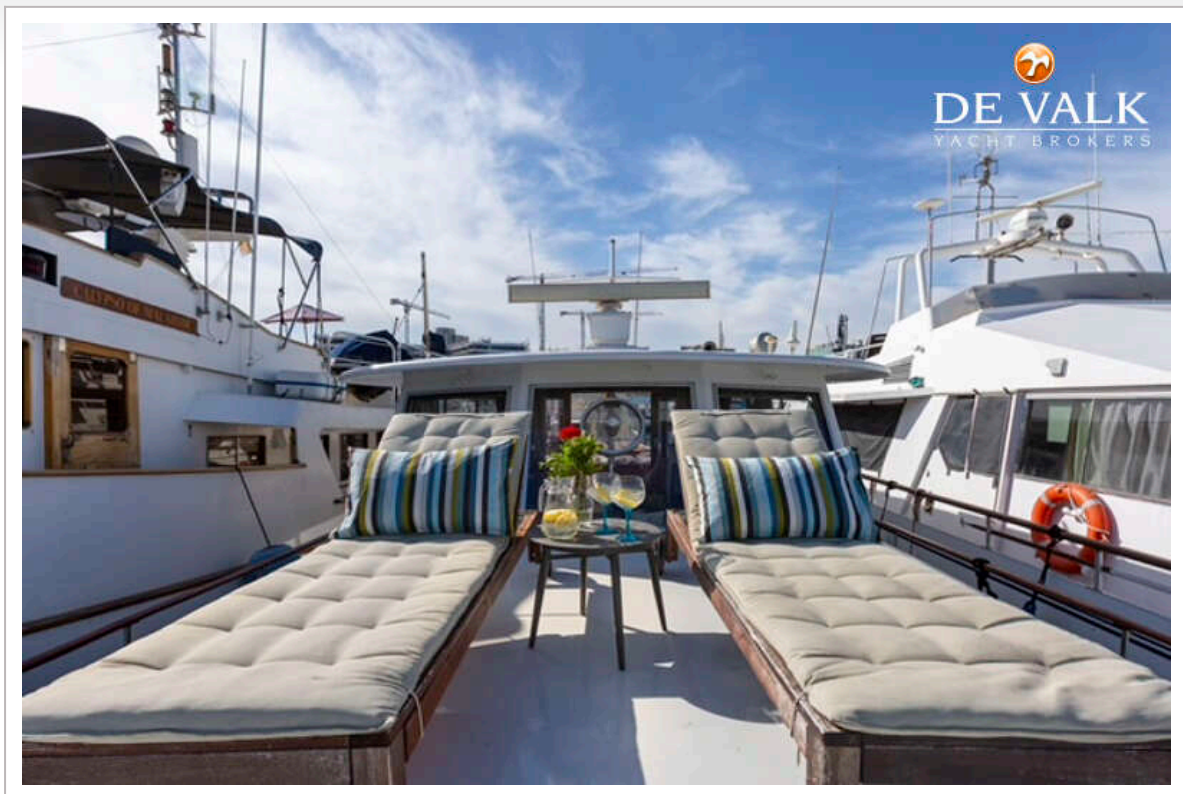


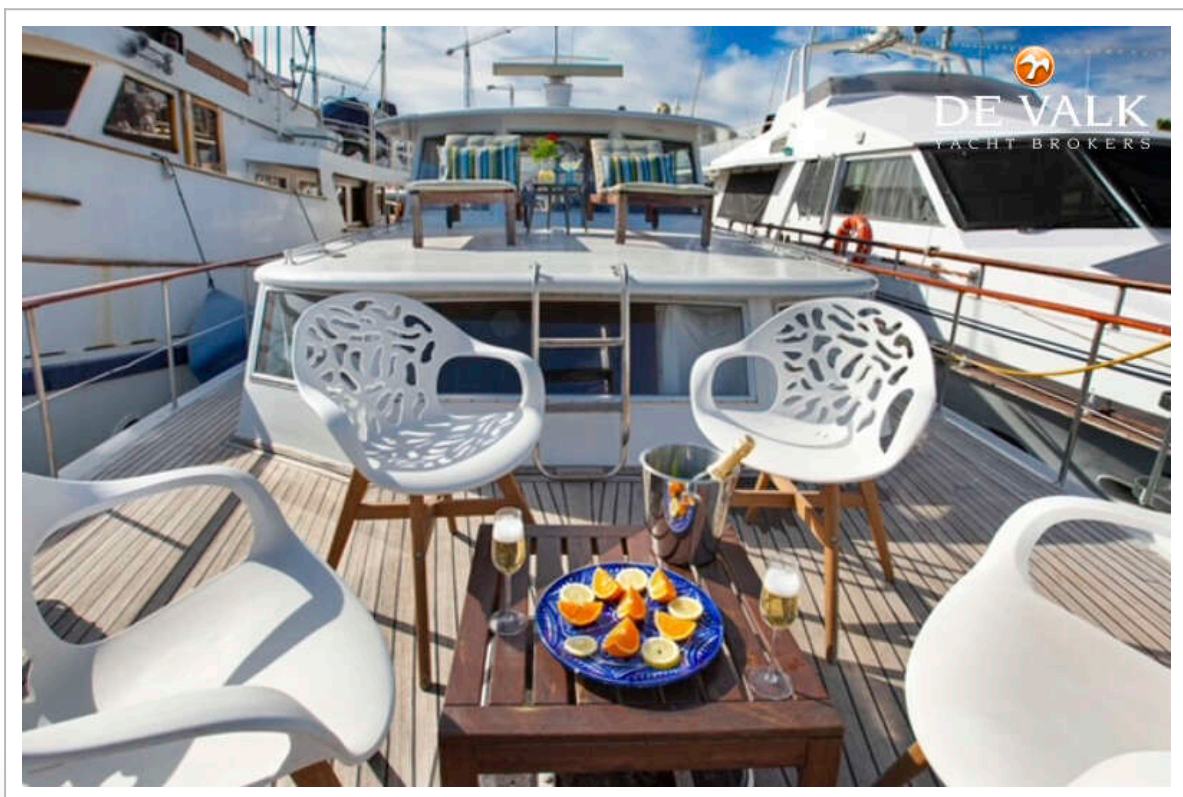
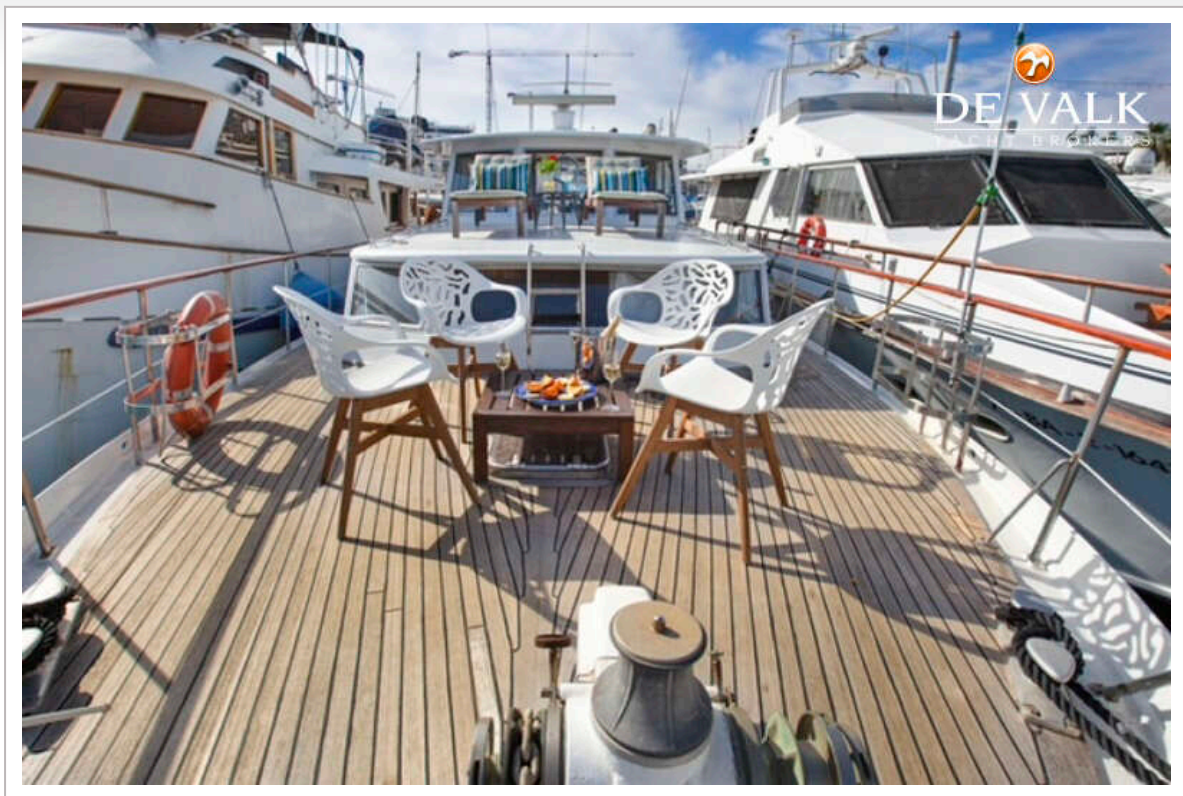
## DE VRIES LENTSCH 5, FEADSHIP











## DE VRIES LENTSCH 5, FEADSHIP



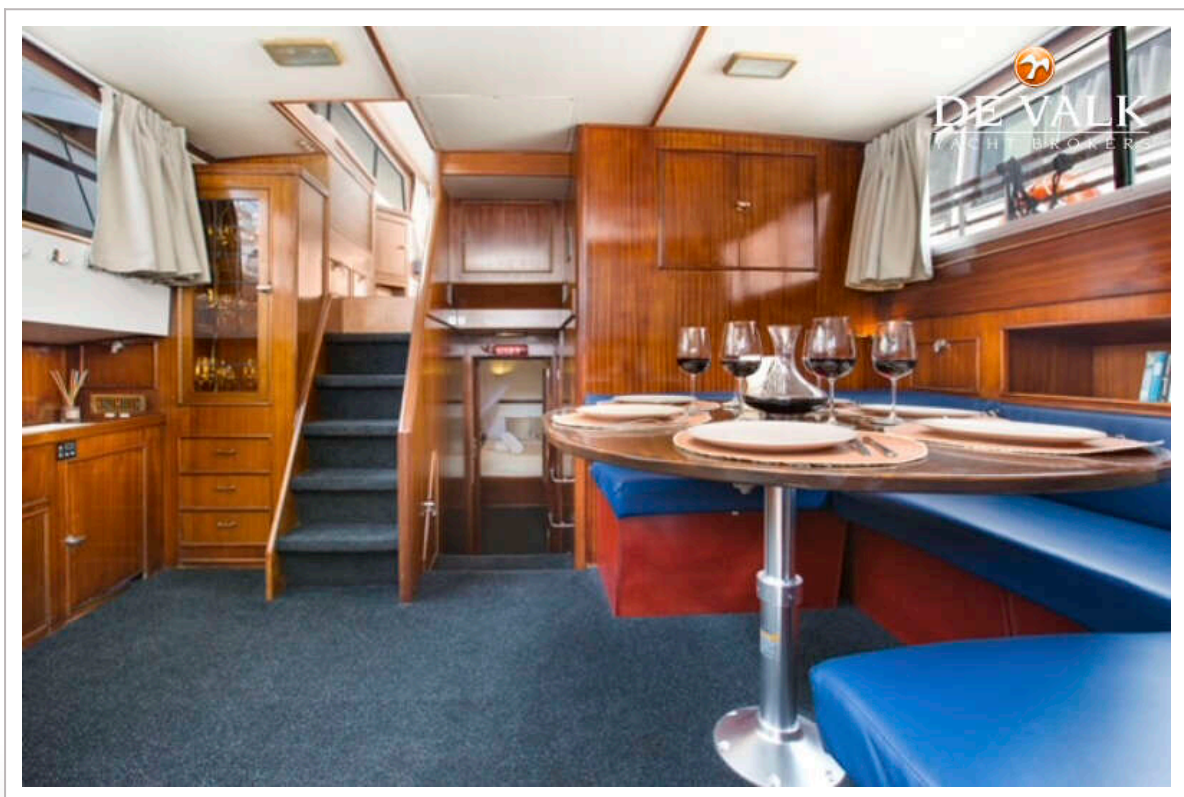
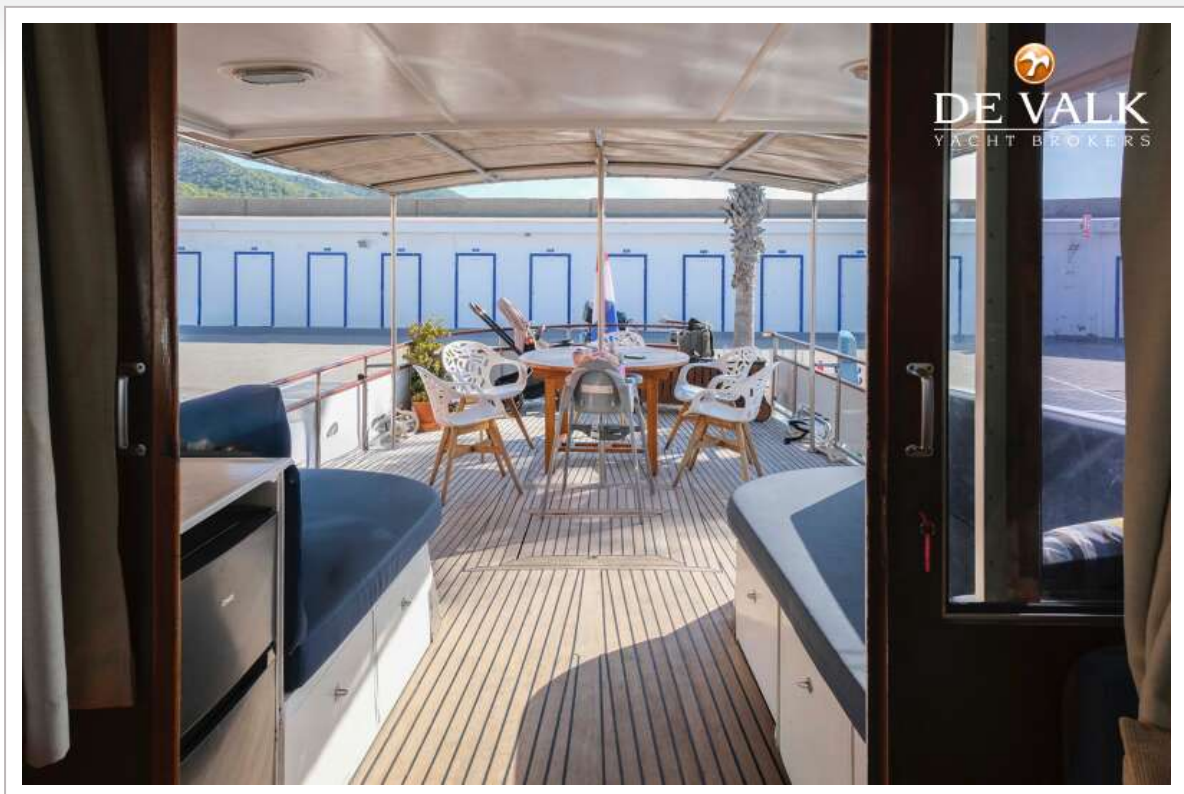
# DE VRIES LENTSCH 5, FEADSHIP



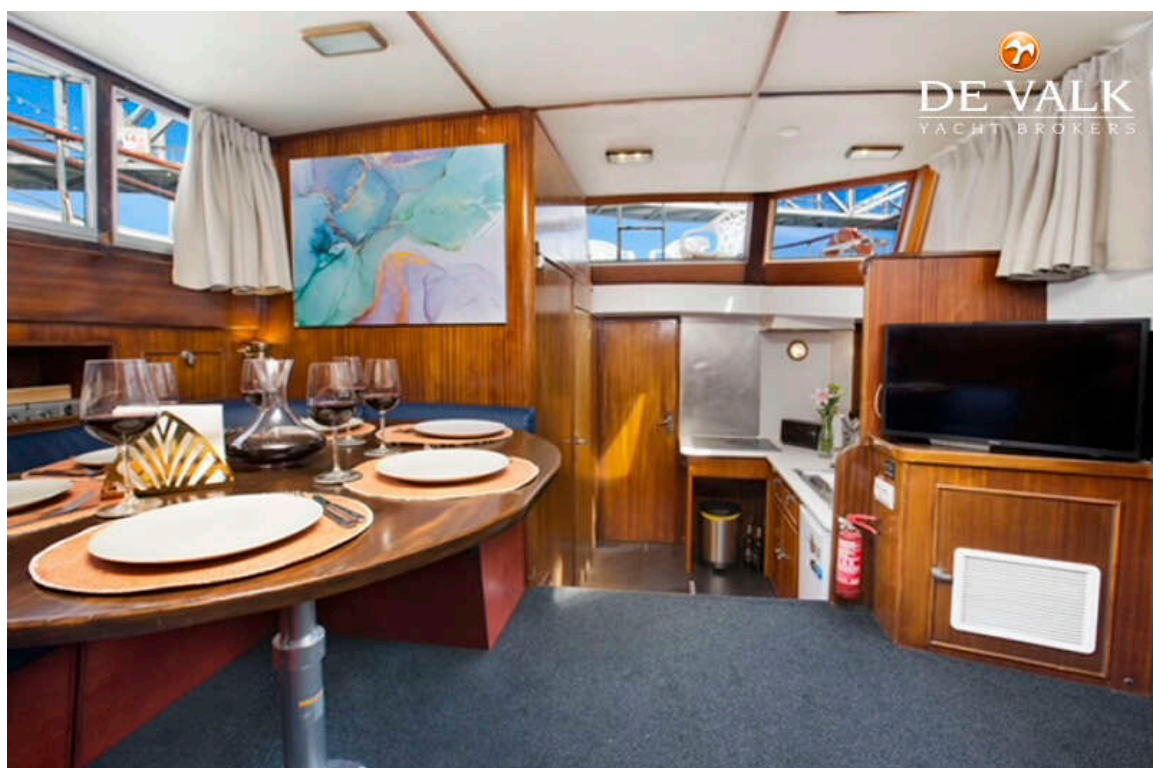
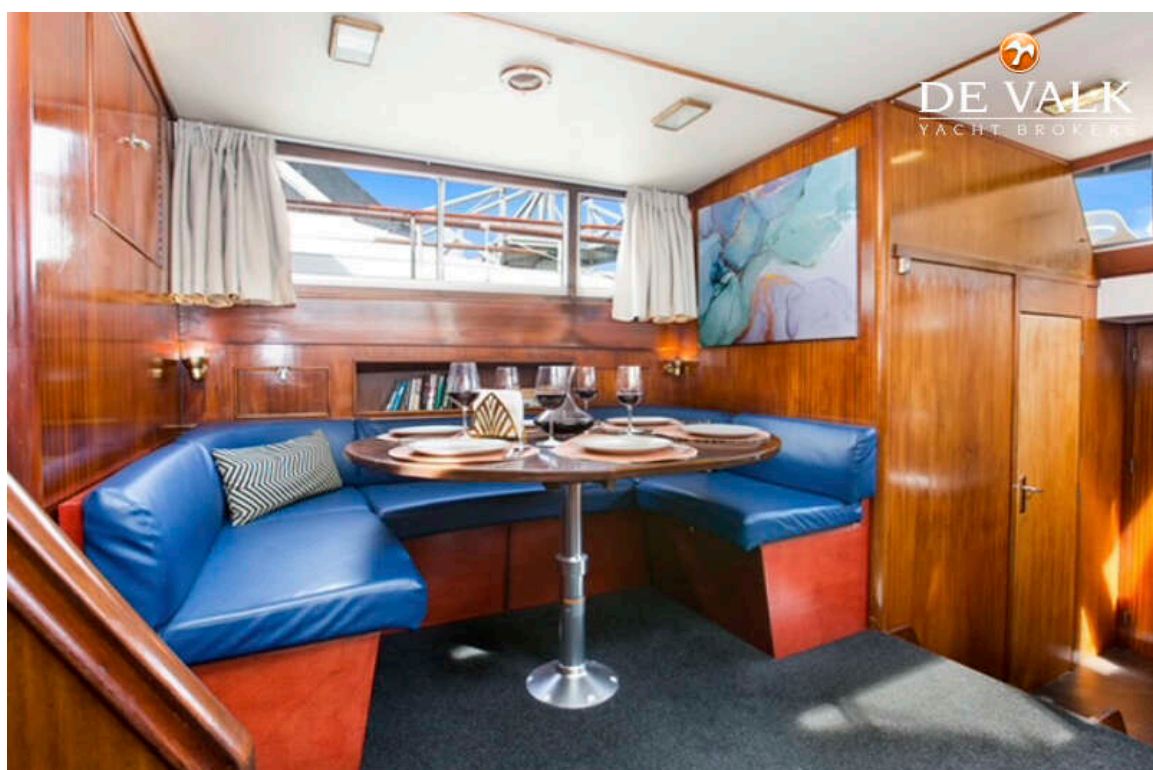
## DE VRIES LENTSCH 5, LEADSHIP

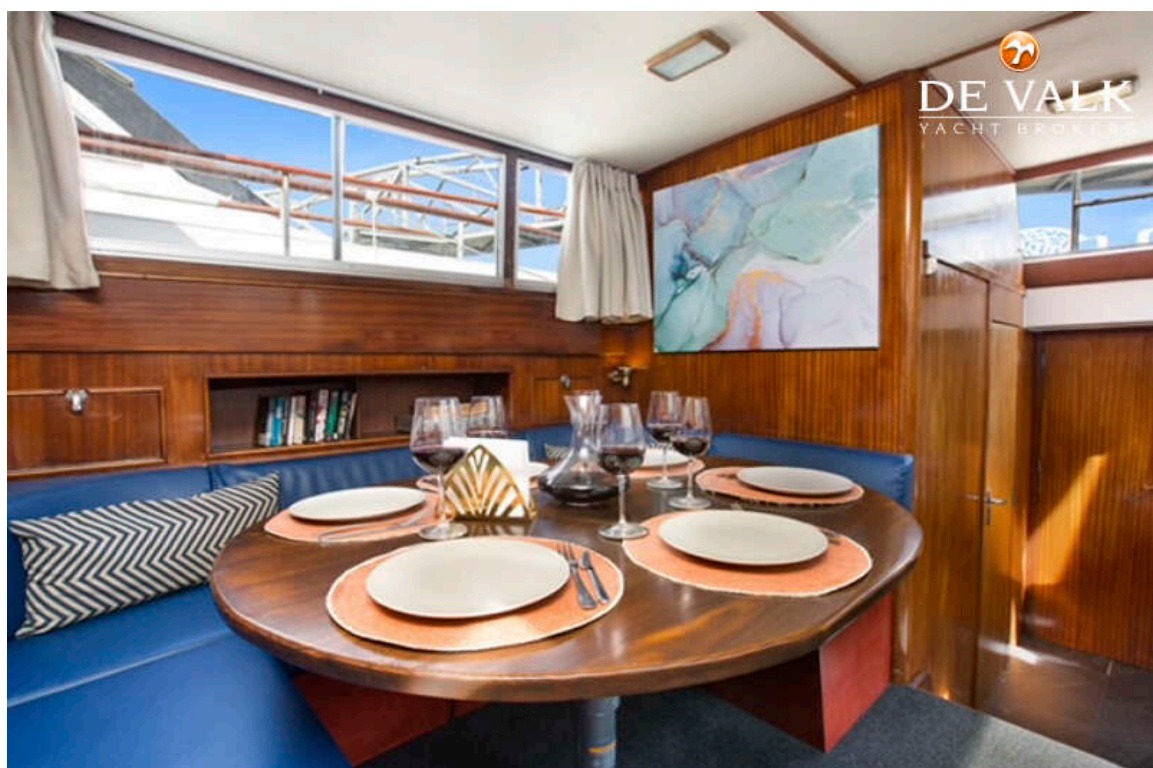


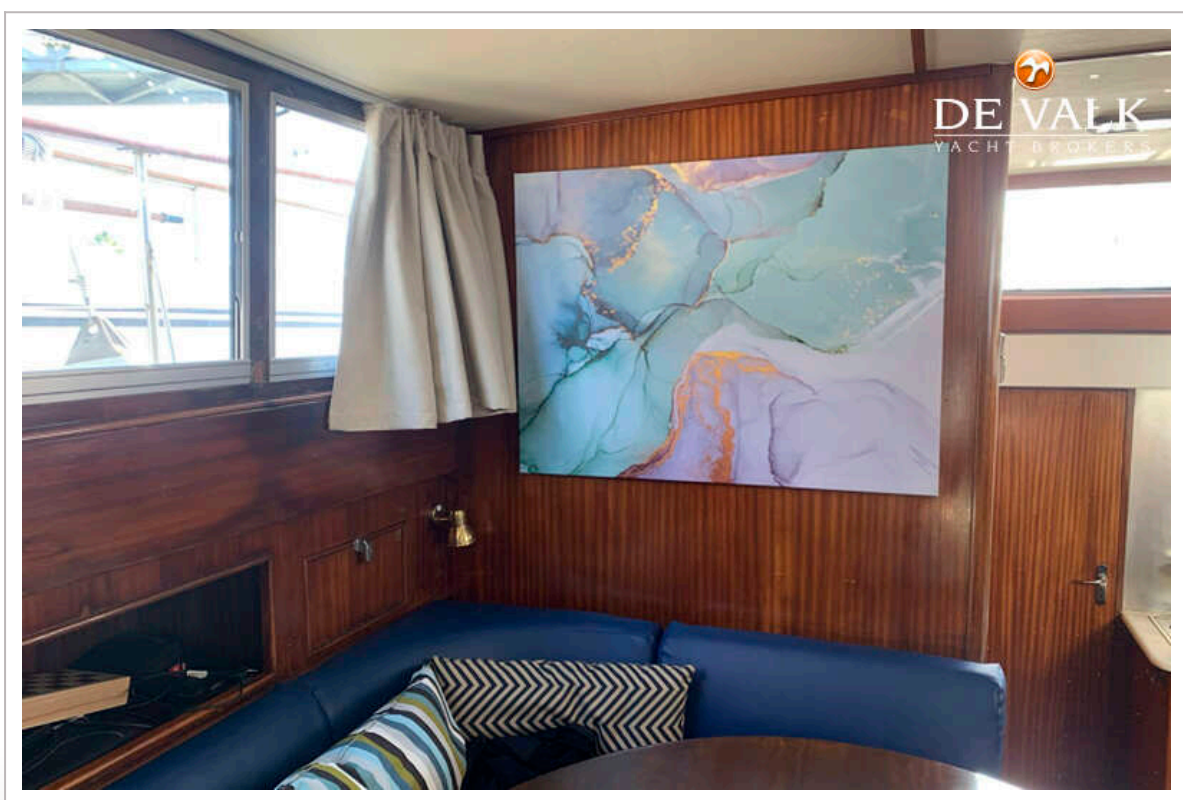
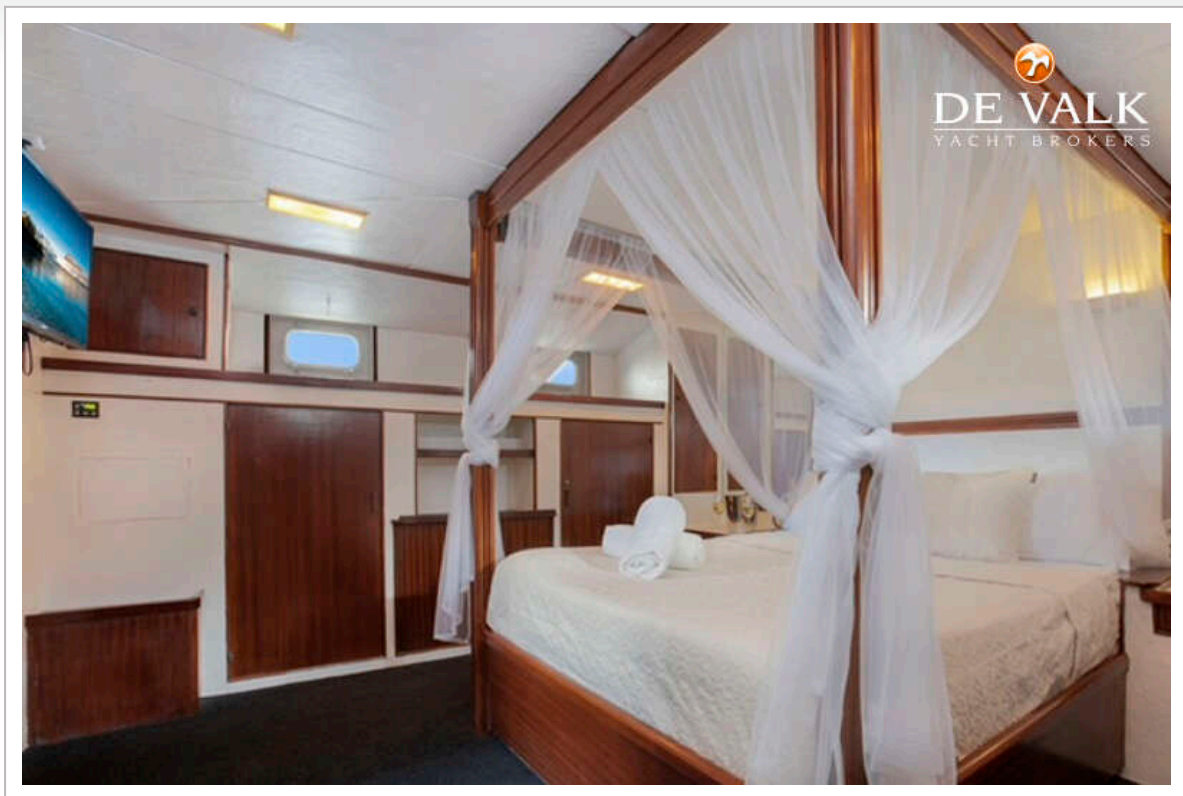
# DE VRIES LENTSCH 5, LEADSHIP

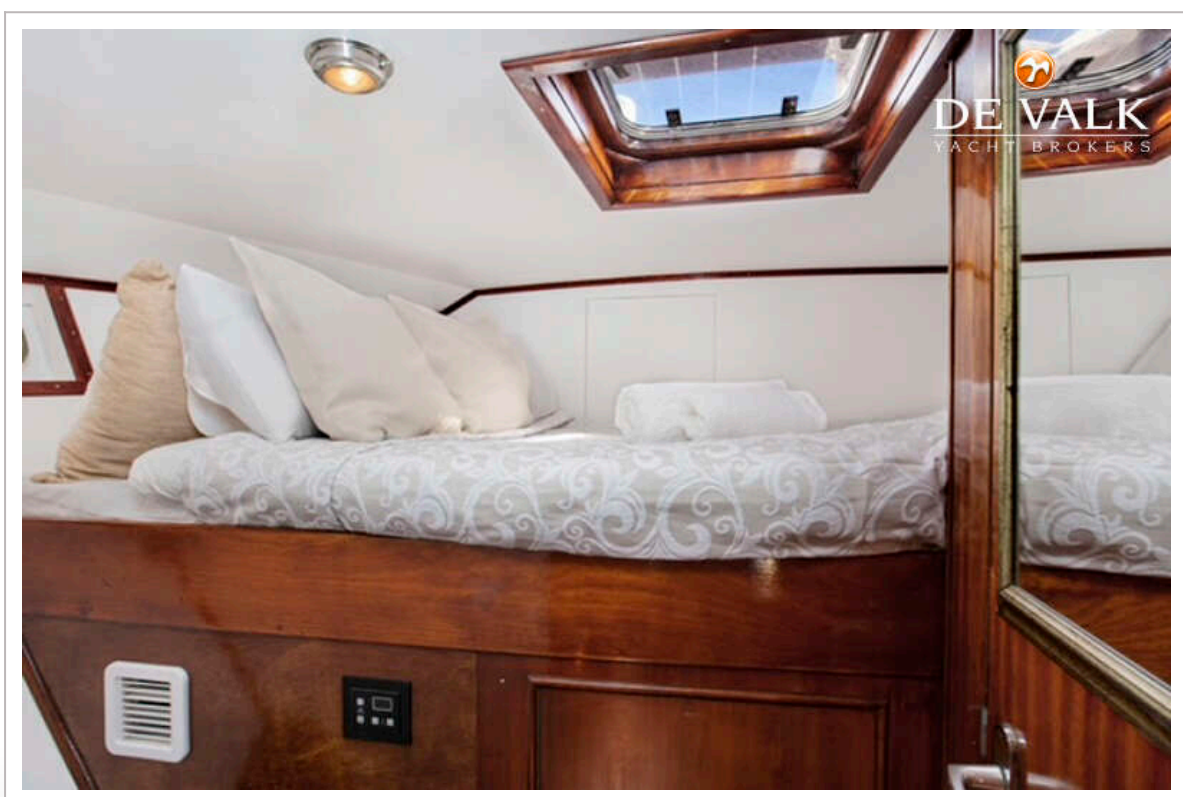
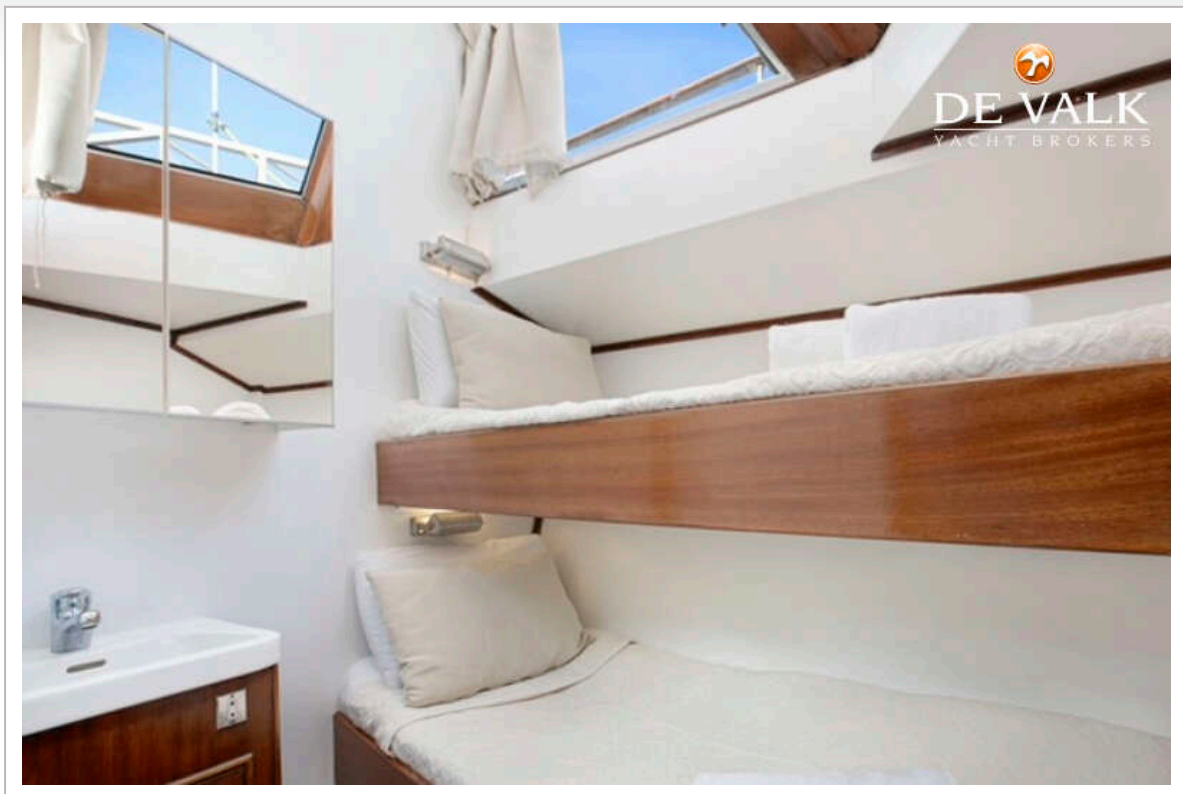


## DE VRIES LENTSCH 5, LEADSHIP









## DE VRIES LENTSCH 5, LEADSHIP

