



FIGEE STEILSTEVEN

BROKER'S COMMENTS

SO99, build by the famous Figee boatyard as a fast going oil tanker formally known as the 'Esso Holland 99' where she used to supply the oil depots. Nowadays, she has been converted into a spacious and comfortable motor vessel for life aboard or cruising through the European inland waterways. With her two cabins in the front she offers 4 berths, a galley with cooking facilities, and on the colder days the stove keeps the ship comfortably warm. The SO99 can be seen in France by appointment.

Reinier van der Wolf

SPECIFICATIONS

Dimensions	20.43 x 3.70 x 1.20 (m)	Builder	Werf Gebr. J.S. Figee, Vlaardingen
Built	1948	Cabins	2
Material	Steel	Berths	4
Engine(s)	1 x DAF DD 575 M diesel	Hp/Kw	85.00 (hp), 62.48 (kw)
Asking price	€ 95.000 (VAT Exempt)	Lying	elsewhere / Not at sales office

CONTACT

Sales office	De Valk Monnickendam B.V.	Telephone	+31 (0)299 65 63 50
Address	Hoogedijk 6 1145 PM Katwoude NL	E-mail	monnickendam@devalk.nl

DISCLAIMER

These particulars are given in good faith as supplied but cannot be guaranteed.



GENERAL

Model	FIGEE STEILSTEVEN
Type	motor yacht
LOA (m)	20,43
LWL (m)	16,00
Beam (m)	3,70
Draft (m)	1,20
Air draft (m)	2,60
Headroom (m)	2,00
Year built	1948
Launched	12 - 8 - 1948
Builder	Werf Gebr. J.S. Figee, Vlaardingen
Country	The Netherlands
Designer	Figee
Displacement (t)	40
Ballast (tonnes)	Lead/concrete
CE norm	NA
Hull material	steel
Hull colour	black
Hull shape	round-bilged
Superstructure material	steel
Rubbing strake	yes
Deck material	steel
Deck finish	non-skid paint
Superstructure deck finish	non-skid paint
Cockpit deck finish	non-skid paint
Antifouling (year)	2023
Dorades	in hatches
Window frame	Aluminium/magogany/wood
Window material	Double glazing/tempered glass
Portholes	Magogany/aluminium



Insulation	rockwool + foam
Mast can be lowered	manual
Fuel tank (litre)	steel 950
Fuel tank 2 (litre)	steel 950
Level indicator (fuel tank)	Sight gauges
Freshwater tank (litre)	stainless steel 1800
Blackwater tank (litre)	stainless steel 500
Blackwater tank extraction	deck extraction + pump
Wheel steering	hydraulic twin rams
Inside helm position	yes
Emergency tiller	with hydraulic by-pass
Extra info	sea valves inspected 2023

ACCOMMODATION

Cabins	2
Berths	4
Interior	oak
Floor	Oak
Pilot house	yes
Saloon	yes
Headroom saloon (m)	1,90
Heating	stove coal multi-fuel cast iron 8kW
Galley	yes
Countertop	wood oak
Sink	stainless steel
Cooker	calor gas 4 hob grill
Oven	yes
Gas alarm	yes
Microwave	yes
Fridge	yes
Freezer	(2024)



Hot water system	220V + engine boiler
Water pressure system	electrical 24v flowjet with accumulator tank
Dishwasher	(2024)
Coffee maker	yes
Crockery	yes
Owners cabin	double bed
Bed length (m)	2.00
Wardrobe	hanging/drawers/shelves
Bathroom	shared
Toilet	shared
Toilet system	electric
Wash basin	at the toilet
Shower	shared
Guest cabin 1	twin single
Wardrobe	drawers
Washing machine	(2024)
Dryer	(2024)

MACHINERY

No of engines	1
Make	DAF
Type	DD 575 M
HP	85
kW	62.48
Fuel	diesel
Year installed	2002
Maximum speed (kn)	9
Consumption (l/hr)	2,5
Engine hours	2616
Engine cooling system	closed keelcooling blockland 165/200
Drive	shaft



Engine controls	yes
Gearbox	hydraulic ZF BW 3oV
Bowthruster	electric Vetus, 160 kgf 250mm (2008)
Exhaust	dry
Thrust bearing	yes
Propeller type	fixed bronze
Propeller blades	3
Propeller shaft material	steel
Shaft lubrication	grease
Manual bilge pump	yes
Electric bilge pump	3x + 1 engine driven
Electrical installation	recently renewed 12 24 220v
Generator	dry exhaust 6.5kW 240v (diesel)
Running hours generator	as new 100
Batteries	24v
Start battery	2x 180 Ah 24v
Service battery	4x 180 Ah 24v
Generator battery	1x 40 Ah 12v
Bowthruster battery	2x 180Ah 24v
Battery monitor	Victron MBV 600
Battery charger	3Kva 2nd alternator main engine drive
Battery charger/inverter	Sterling pro-combi sinewave 3000VA
Solar panel	on pilot house roof 3x 250W fixed panels 24v
Diode battery combiners	Sterling prosplit R
Shorepower	with cable with 1:1 isolator transformer

NAVIGATION

Depth sounder	Clipper
VHF	Standard horizon GX2000e with ATIS
Rudder angle indicator	VDO
GPS	Garmin GPS Map 192c



AIS receiver

EM-TREK A100

Navigation lights

yes

EQUIPMENT

Fixed windscreen

yes

Dodger

Foredeck spray cover

Sun awning

Complete cockpit stainless steel frame and canvas top
exterior upholstery is new (over €2000).

Cockpit cushions

stainless steel

Boarding ladder

Collapsible stowed in forepeak

Bow ladder

Stowed on deck

Gangway

Anchor

60 kg Marrel

Anchor chain

60m

Anchor 2

Pool

Windlass

manual | Strikwerda 2 speed with warp drum

Deck wash

Cockpit hose connection 24v

Sea railing

yes

Grab rail (superstructure)

steel

Life raft

container | Plastimo

Lifejackets

yes

Lifebuoy

yes

Danbuoy

yes

Horn

electric

Fenders

yes

Mooring lines

yes

Fire extinguisher

powder (2-3 kg each) | 4x

Extinguisher in engine room

yes

Extra info

Manual deck crane



FIGEE STEILSTEVEN



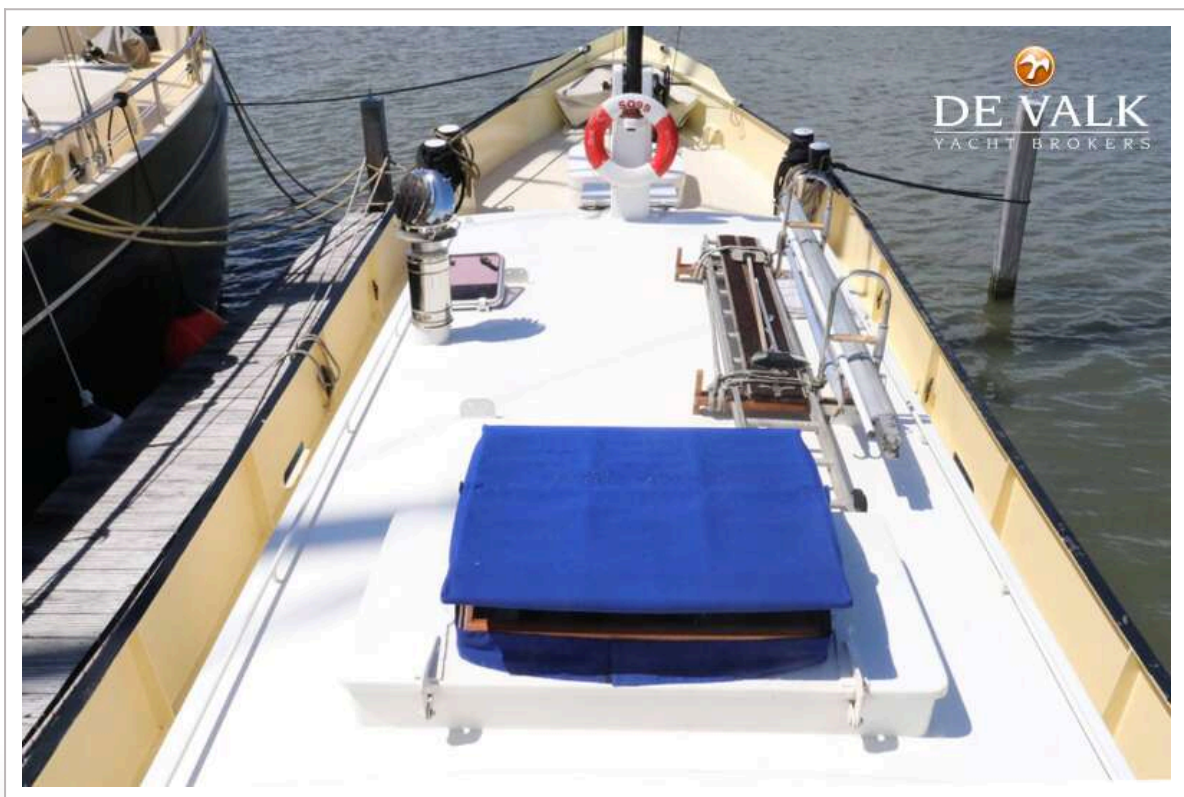
FIGEE STEILSTEVEN



FIGEE STEILSTEVEN



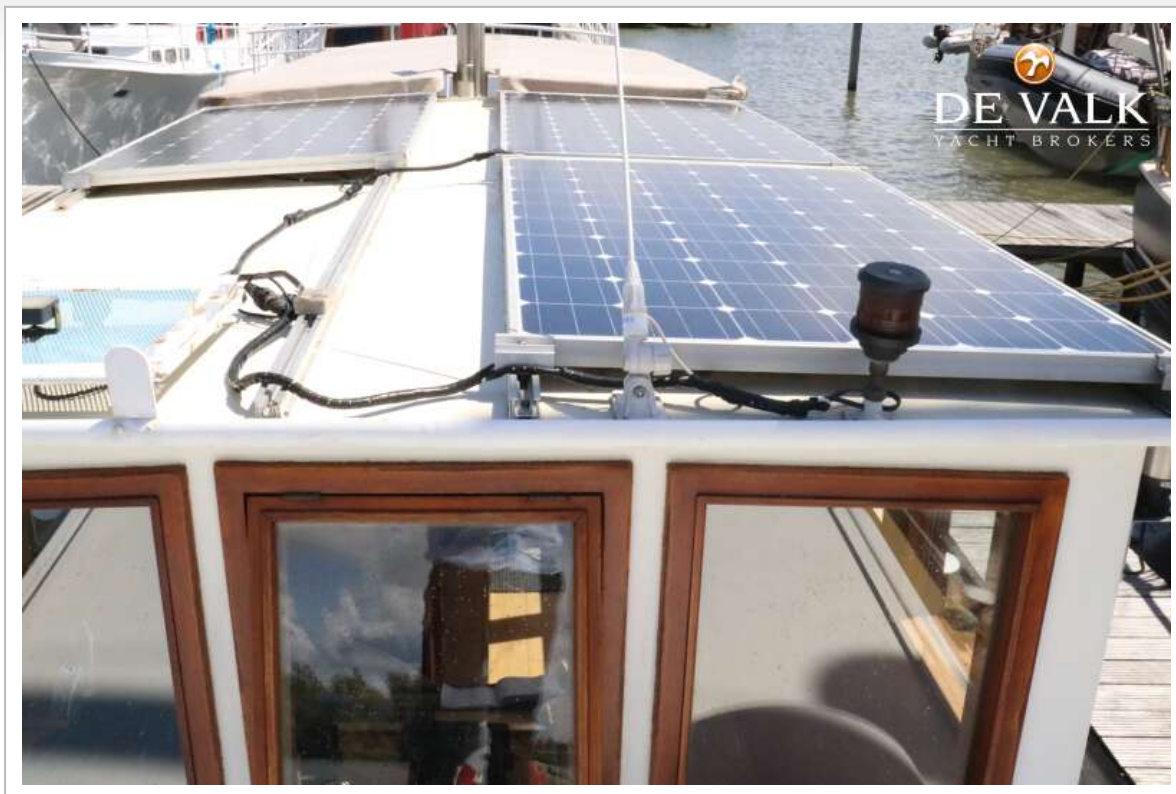
FIGEE STEILSTEVEN



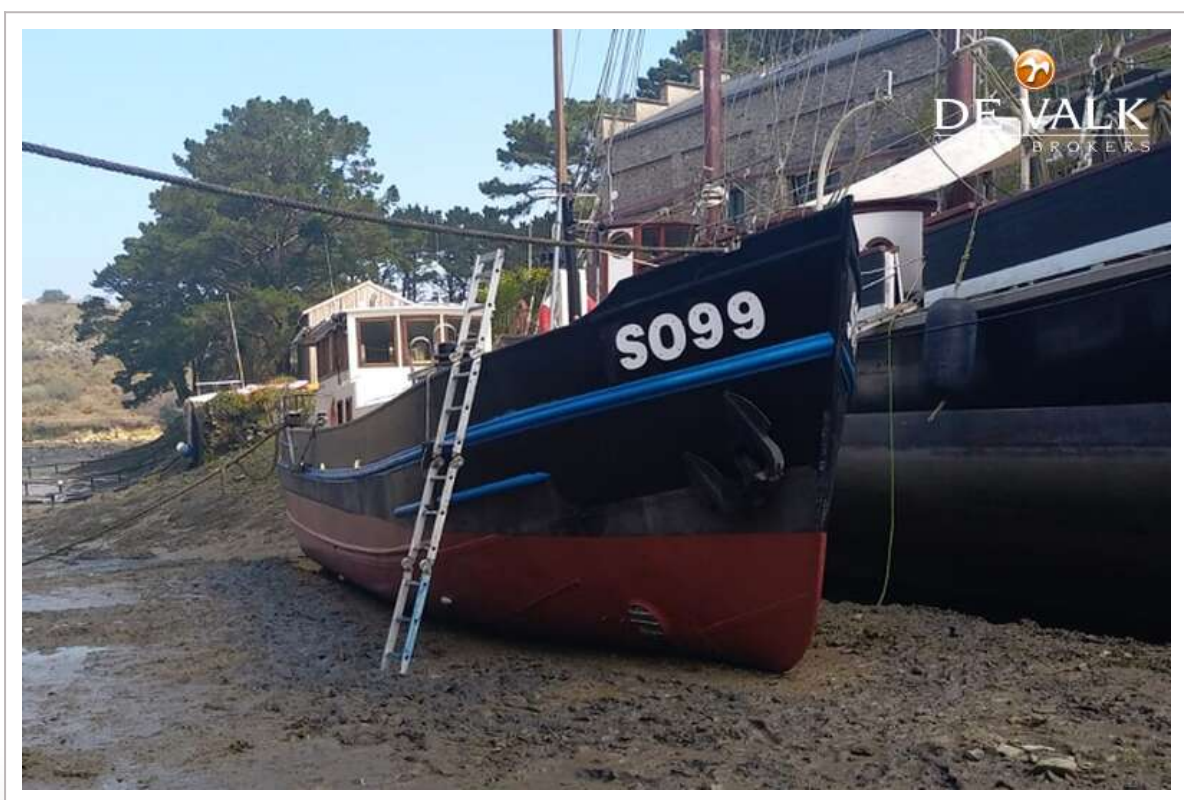
FIGEE STEILSTEVEN



FIGEE STEILSTEVEN



FIGEE STEILSTEVEN



FIGEE STEILSTEVEN



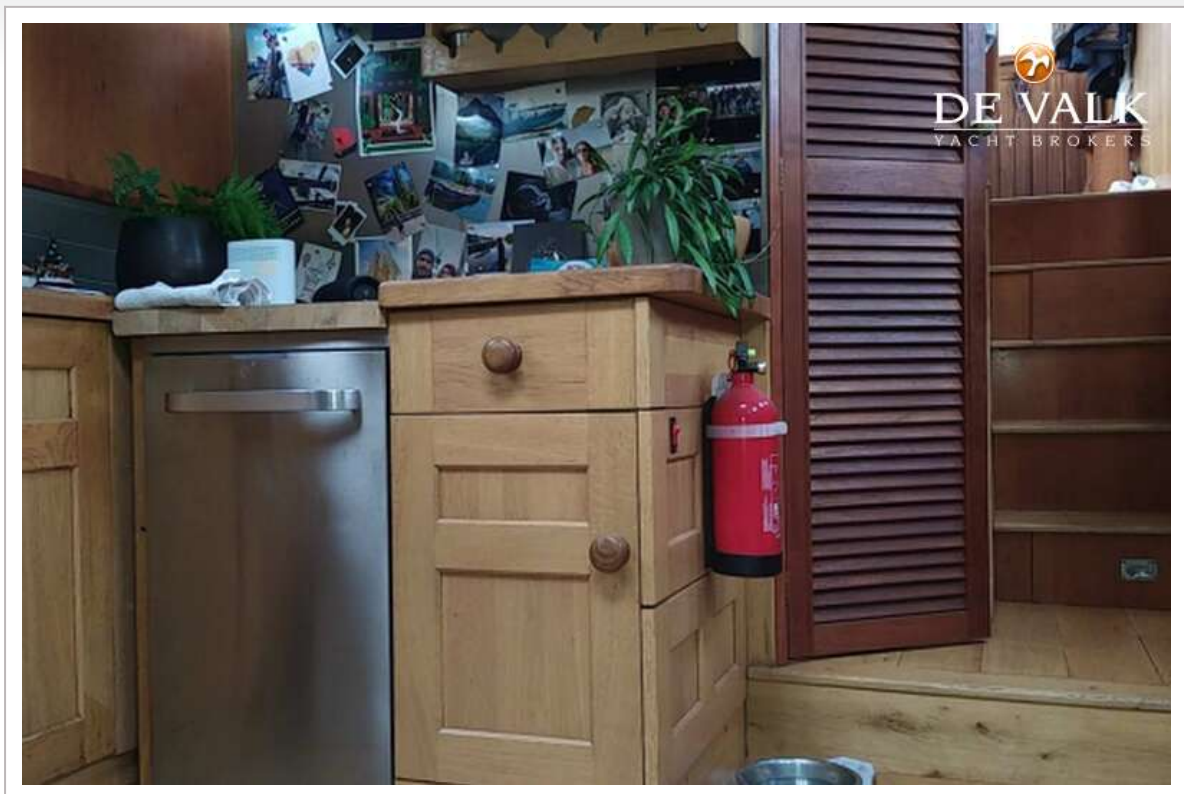
FIGEE STEILSTEVEN



FIGEE STEILSTEVEN

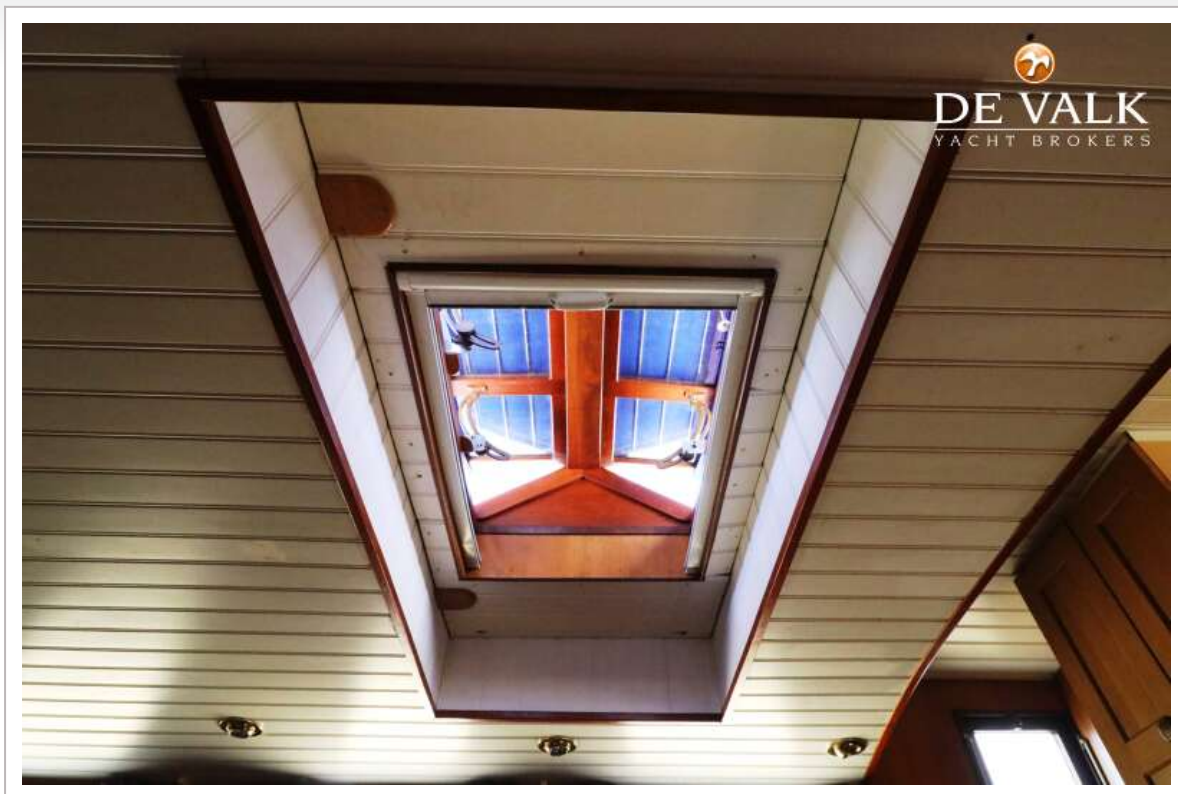


FIGEE STEILSTEVEN

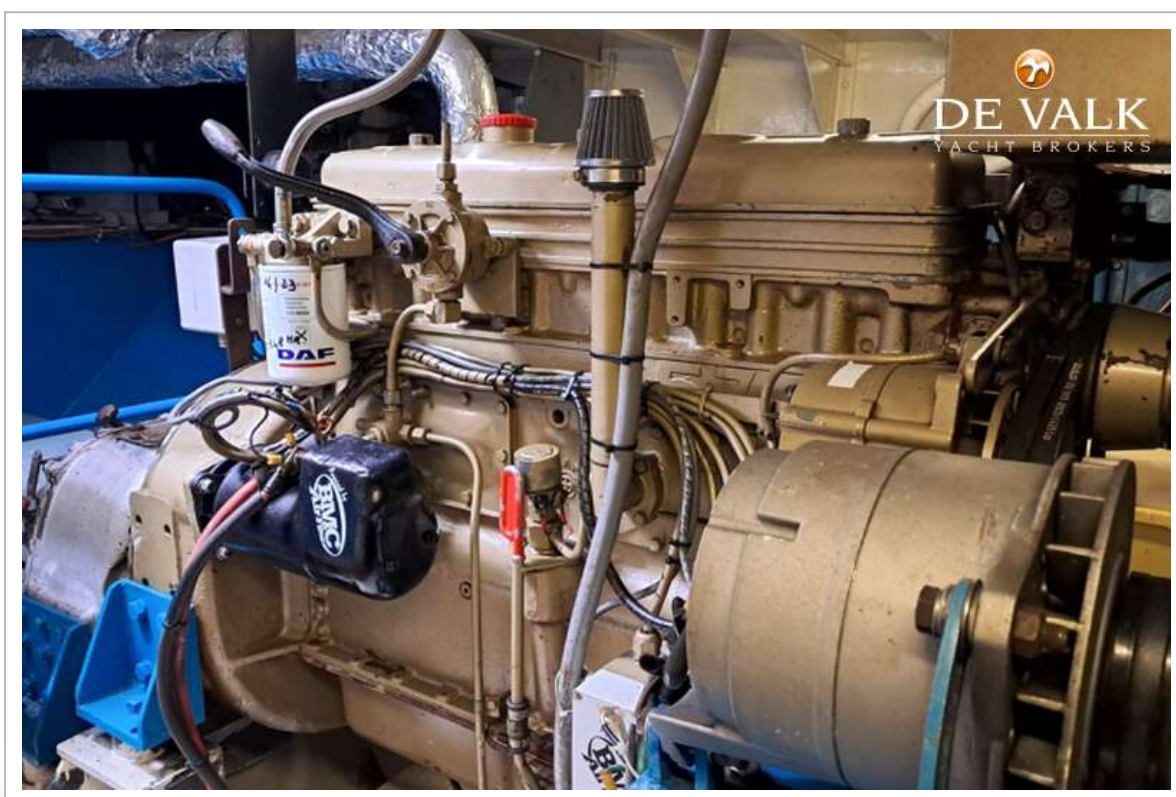
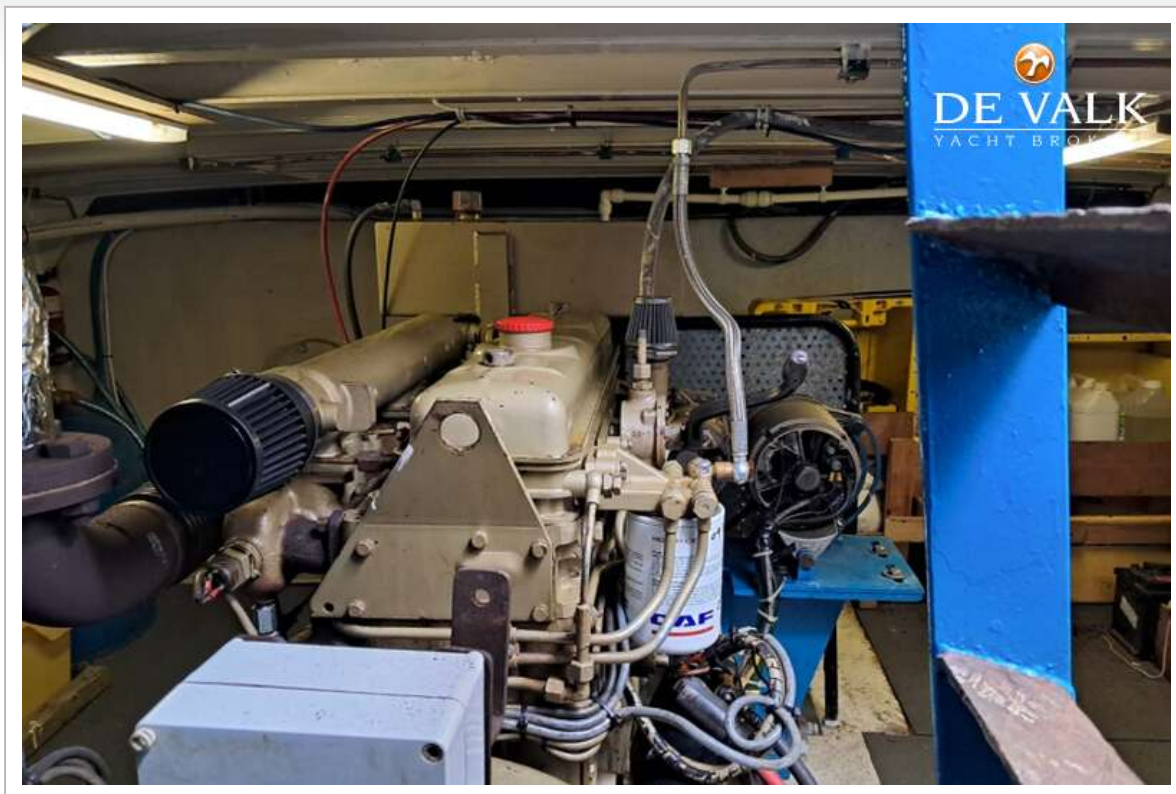


FIGEE STEILSTEVEN





FIGEE STEILSTEVEN



FIGEE STEILSTEVEN

