



DE VALK
YACHT BROKERS



HANSE 342



DE VALK
YACHT BROKERS

BROKER'S COMMENTS

Beautiful Hanse 342, 2-cabin version with shallow draft - the perfect boat for sailors who like their adventures exciting but their keel commitment issues... manageable. Extremely well maintained and hardly used (honestly, it's seen less action than most gym memberships), with only 1121 engine hours - barely broken in for a yacht that's clearly been waiting patiently for someone to take it out more often. In beautiful condition and fully ready to go-just waiting for someone to finally give it the adventure it's been patiently hinting at all these years. Now ready to be admired and inspected.

Johan Nooitgedagt

SPECIFICATIONS

Dimensions	10.35 x 3.40 x 1.58 (m)	Builder	Hanse Yachtzentrum
Built	2005	Cabins	2
Material	GRP	Berths	5
Engine(s)	1 x Yanmar 3YM20 diesel	Hp/Kw	21.00 (hp), 15.46 (kw)
Asking price	€ 59.000 (VAT Paid)	Lying	contact Hindeloopen

CONTACT

Sales office	De Valk Hindeloopen B.V.	Telephone	+31 514 52 40 00
Address	Oosterstrand 1 8713 JS Hindeloopen NL	E-mail	hindeloopen@devalk.nl

DISCLAIMER

These particulars are given in good faith as supplied but cannot be guaranteed.



GENERAL

Model	HANSE 342
Type	sailing yacht
LOA (m)	10,35
LWL (m)	9,20
Beam (m)	3,40
Draft (m)	1,58
Air draft (m)	16,50
Headroom (m)	1,95
Year built	2005
Builder	Hanse Yachtzentrum
Country	Germany
Designer	Judel & Vrolijk
Displacement (t)	5,1
Ballast (tonnes)	cast iron 1,7
CE norm	A
Hull material	GRP
Hull colour	white
Hull shape	round-bilged
Keel type	fin keel
Superstructure material	GRP
Rubbing strake	stainless steel
Deck material	GRP
Deck finish	teak
Superstructure deck finish	non-skid moulded in
Cockpit deck finish	teak
Antifouling (year)	2026
Window frame	aluminium
Window material	perspex
Deckhatch	4
Fuel tank (litre)	polyethylene 79



Level indicator (fuel tank)	yes
Freshwater tank (litre)	polyethylene 238
Level indicator (freshwater)	yes
Wheel steering	mechanical Whitlock Cobra
Emergency tiller	yes

ACCOMMODATION

Cabins	2
Berths	5
Interior	mahogany
Layout	yes
Floor	woodprint
Open cockpit	yes
Saloon	yes
Headroom saloon (m)	1,90
Heating	diesel ducted hot air Webasto Air Top 3500
Navigation center	yes
Chart table	yes
Aft Cabin	yes
Galley	yes
Countertop	corian
Sink	yes
Cooker	calor gas 2 Burner
Oven	yes
Fridge	Isotherm
Hot water system	220V + engine Isotemp Boiler 22ltr
Water pressure system	electrical
Owners cabin	v-bed 2020 New Matress front
Bed length (m)	1,95
Wardrobe	hanging and shelves
Bathroom	shared



Toilet	shared Jabsco
Toilet system	manual
Wash basin	at the toilet
Shower	shared
Guest cabin 1	double bed Rear
Bed length (m)	2.0
Wardrobe	hanging and shelves

MACHINERY

No of engines	1
Make	Yanmar
Type	3YM20
HP	21
kW	15.46
Fuel	diesel
Maximum speed (kn)	7
Cruising speed (kn)	5
Consumption (l/hr)	3
Engine hours	1121
Engine cooling system	freshwater heat exchanger
Drive	sail-drive
Saildrive seal	2020 replaced
Engine controls	bowden cable
Gearbox	mechanical
Exhaust	watercooled
Propeller type	1x folding 1x fixed spare
Propeller blades	1x3blades & 1x2blades
Manual bilge pump	yes
Electric bilge pump	yes
Start battery	2022 1x Optima Redtop 50Ah
Service battery	2019 2x Victron AGM 12V 110Ah



Battery charger	Victron 12/25 Blue power charger
Shorepower	with cable

NAVIGATION

Compass	Plastimo Olympic 135
Depth sounder	B & G
Depth sounder/log	yes
Log	B & G
Windset	B & G
Repeater	B & G
VHF	2022 B&G H100
Autopilot	Simrad WP30
GPS	Furuno GP 32
Plotter	B&G V7 Plotter
Plotter/GPS	B&G V7 Plotter
AIS transponder	2019 B&G V3100

EQUIPMENT

Sprayhood	yes
Winter cover	yes
Cockpit table	yes
Bathing platform	yes
Boarding ladder	stainless steel
Deck shower	yes
Anchor	CQR Plough
Sea railing	stainless steel
Grab rail (superstructure)	wood
Pushpit	yes
Pulpit	yes
Life raft	valise (or bag) Arimar
Life raft (pers)	valise (or bag) 4



Lifejackets	yes
Radar reflector	yes
Fenders	yes
Mooring lines	yes
Spare parts	yes
Radio	Pioneer
Speakers in salon	yes
Fire extinguisher	yes

RIGGING

Rigging	sloop
Standing rigging	wire
Brand mast	Seldén
Material mast	aluminium
Spreaders	2 Pair
Mainsail	33,50m ²
Mainsail cover	yes
Jib	21m ²
Genoa	yes
Genoa cover	Jan Schokker
Gennaker	Hardley used
Self tacking jib installation	2020 21m ² UK de Vries Sails
Reefing System	quick-one-line-reefing
Backstay adjuster	tackle
Boomvang	mechanical and tackle
Genoa sheetwinches	2x Harken ST40
Halyard winches	2x Harken ST 40
Multifunctional winches	halyard/sheet winches



HANSE 342



HANSE 342



HANSE 342



HANSE 342





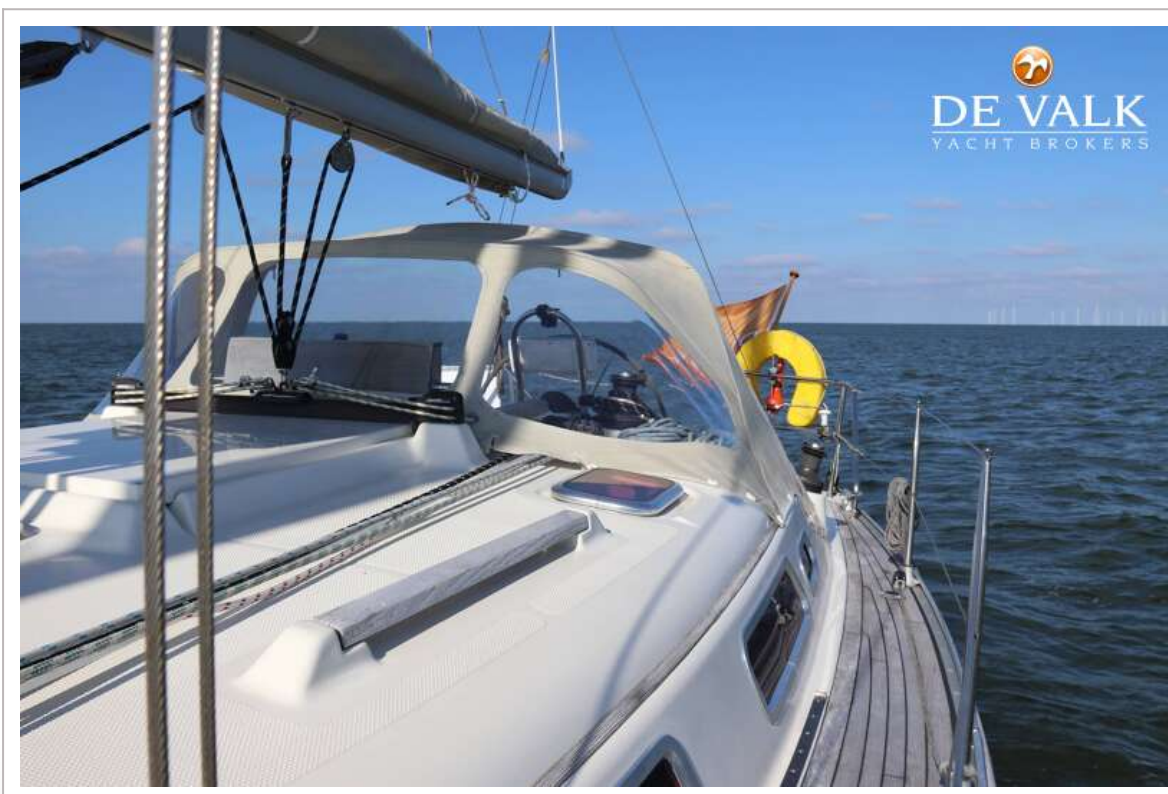
HANSE 342



HANSE 342



HANSE 342



HANSE 342



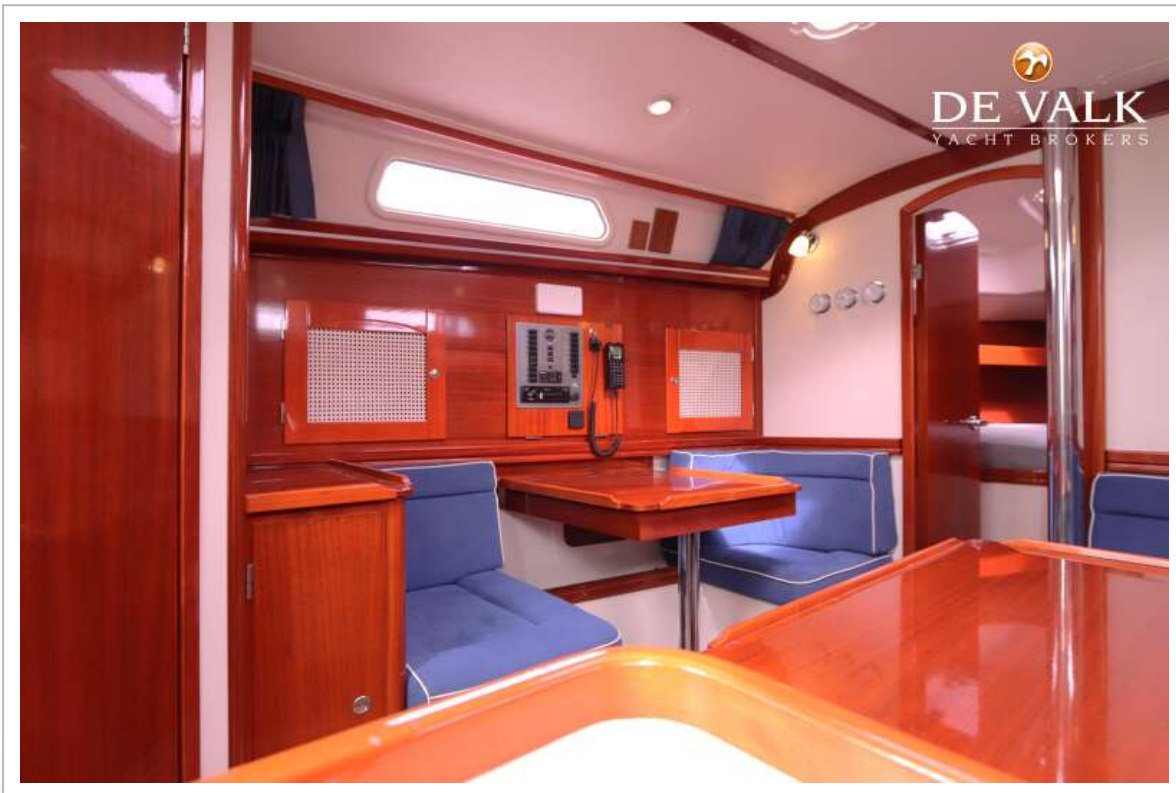
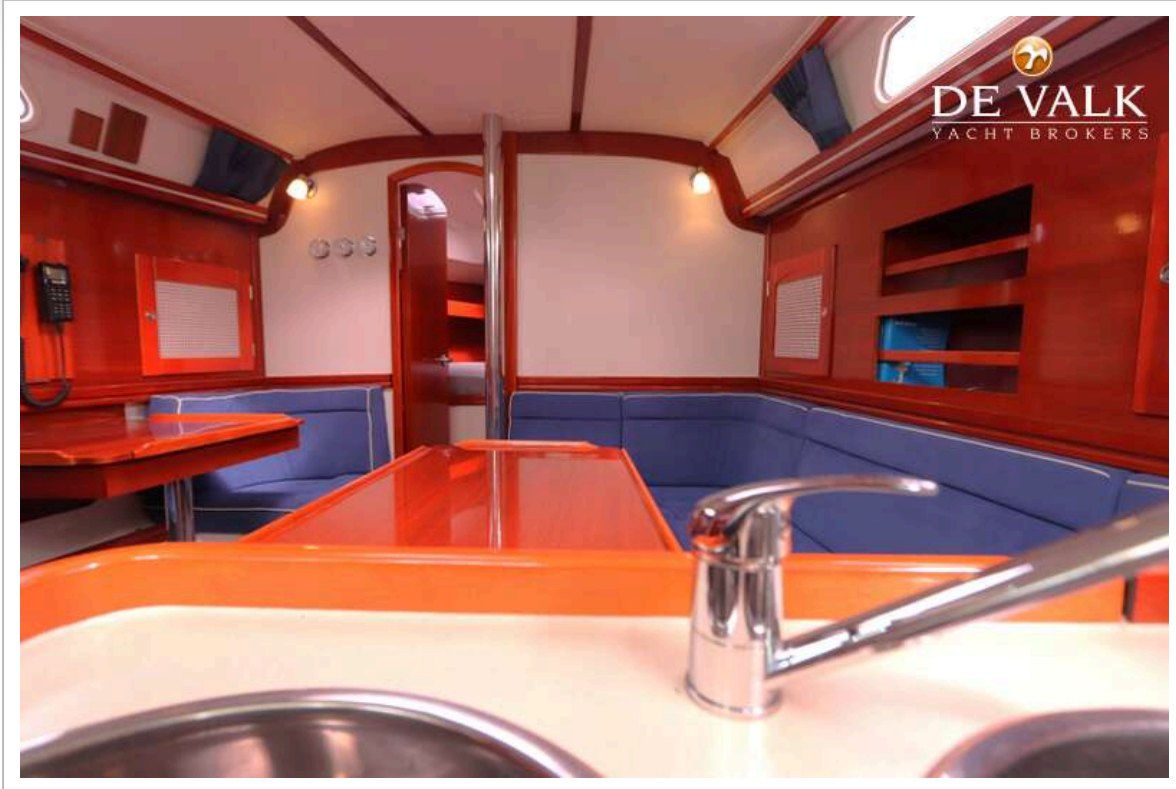
HANSE 342



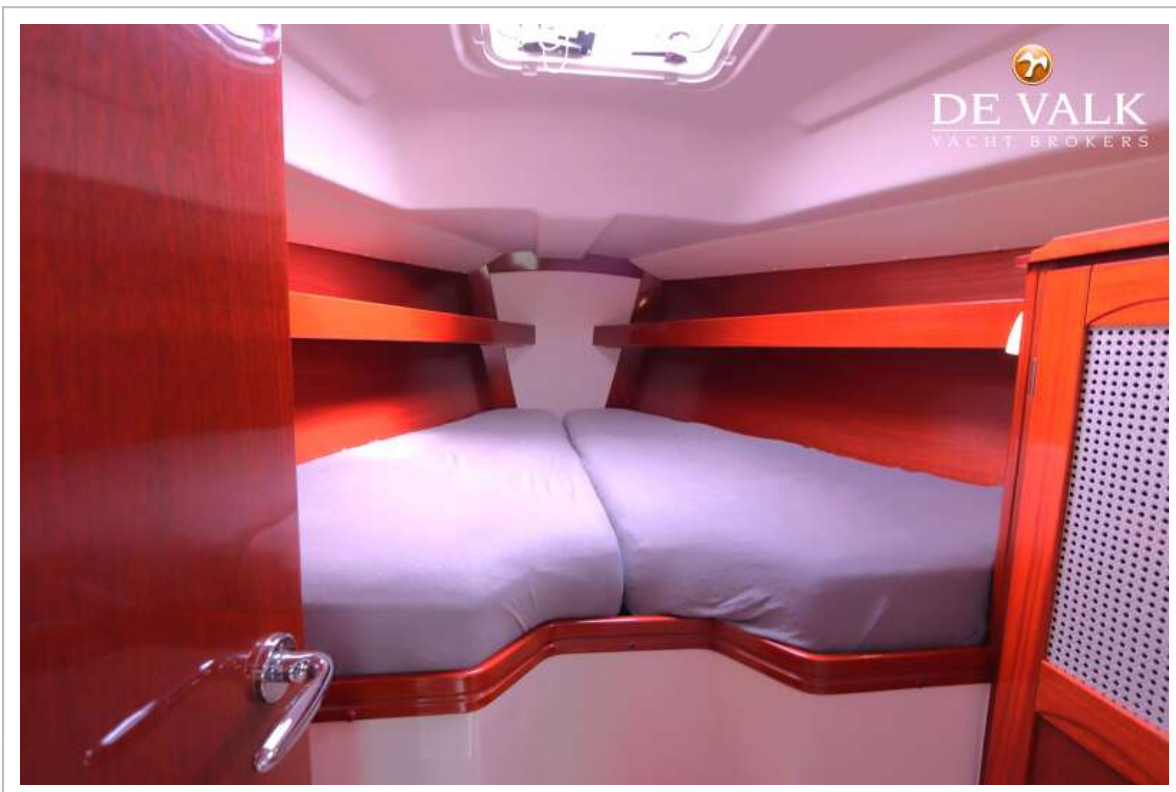
HANSE 342



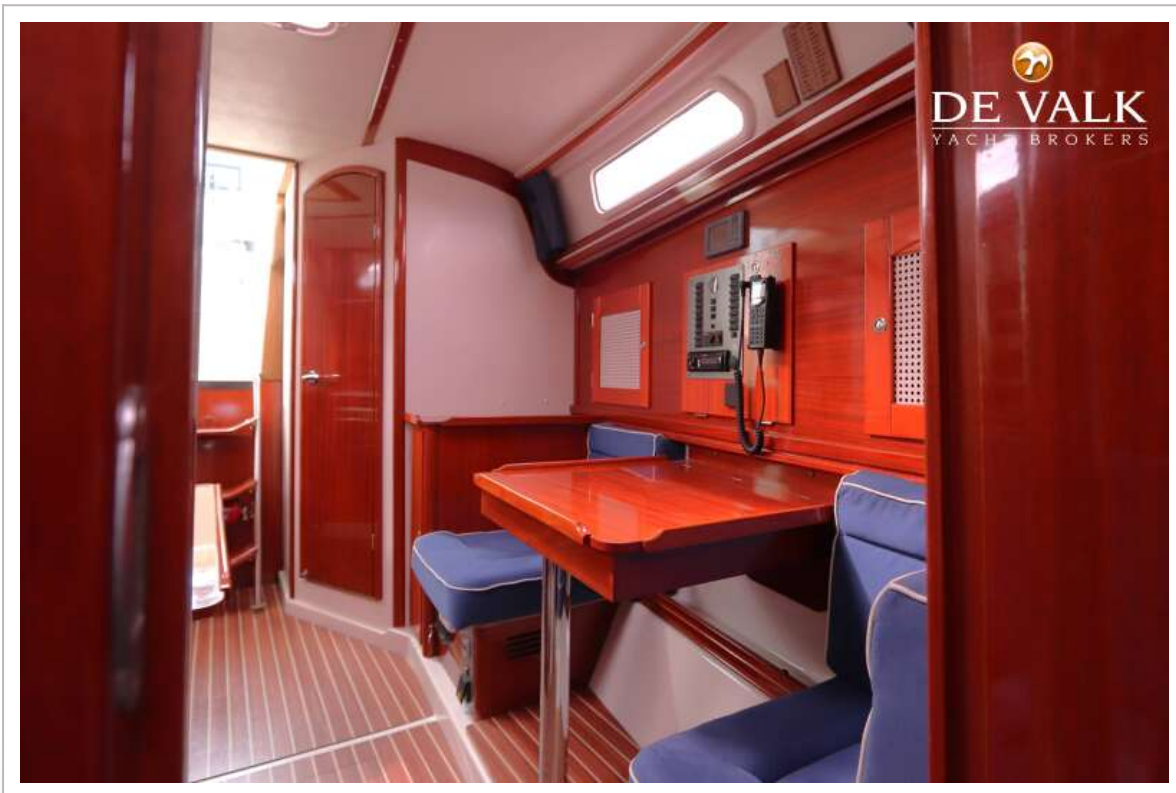
HANSE 342



HANSE 342



HANSE 342



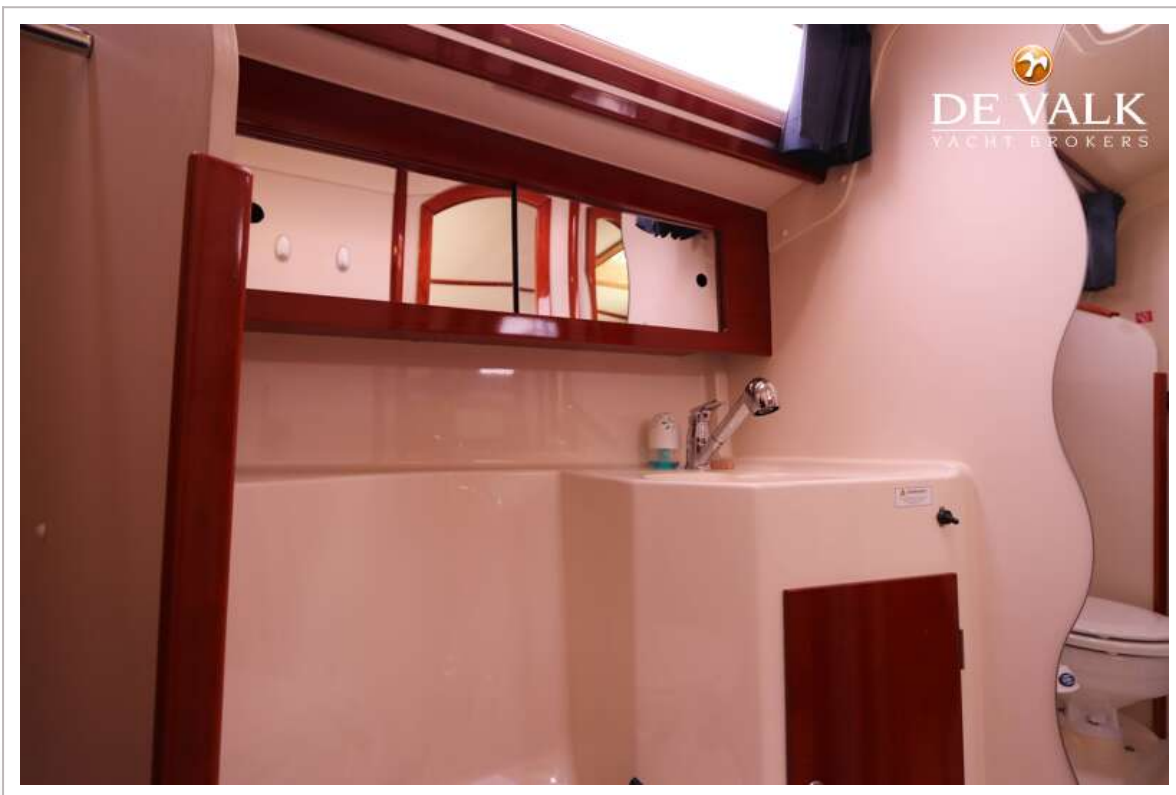
HANSE 342



HANSE 342



HANSE 342



HANSE 342



HANSE 342

