



HUNTER 38 LEGEND



HUNTER 38 LEGEND

BROKER'S COMMENTS

This HUNTER 38 LEGEND is an exceptional English vessel, designed by Hunter Marine to istigate the "hunt" in the sea. This vessel will make you feel comfortable, but most exceptionally secure onboard. With Raymarine equipment and a Yanmar engine, she will make your sailing experience as if you were on a "floating condo". This HUNTER 38 LEGEND has wide accomodations which ensures a pleasurable stay without compromising the speed of which she is so well known for.

Raoul van der Werf

SPECIFICATIONS

Dimensions	11.18 x 3.93 x 1,52 / 1.52 (m)	Builder	Luhrs Marine Limited
Built	2006	Cabins	2
Material	GRP	Berths	4
Engine(s)	1 x YANMAR 3JH4 diesel	Hp/Kw	40.00 (hp), 29.44 (kw)
Asking price	€ 99.500 (VAT Paid)	Lying	elsewhere / Not at sales office

CONTACT

Sales office	De Valk Antibes	Telephone	+33 492 91 0202
Address	2, Avenue de Verdun 06600 Antibes FR	E-mail	antibes@devalk.nl

DISCLAIMER

These particulars are given in good faith as supplied but cannot be guaranteed.



HUNTER 38 LEGEND

GENERAL

Model	HUNTER 38 LEGEND
Type	sailing yacht
LOA (m)	11,18
LWL (m)	10,56
Beam (m)	3,93
Draft (m)	1,52
Draft min (m)	1,52
Year built	2006
Builder	Luhrs Marine Limited
Country	United Kingdom
Designer	Hunter Marine
Displacement (t)	8,38
CE norm	B
Hull material	GRP
Hull colour	white
Superstructure material	GRP
Deck material	GRP
Deck finish	non-skid moulded in
Cockpit deck finish	teak
Deckhatch	yes
Fuel tank (litre)	132 L
Level indicator (fuel tank)	yes
Freshwater tank (litre)	248 L
Blackwater tank (litre)	yes
Wheel steering	yes

ACCOMMODATION

Cabins	2
Berths	4
Interior	teak



HUNTER 38 LEGEND

Floor	teak
Saloon	yes
Heating	yes
Dinette	With table and sofa
Galley	yes
Countertop	yes
Sink	stainless steel
Cooker	2-burner gas stove
Oven	yes
Fridge	Indel B stainless steel
Hot water system	220V/engine/heating
Owners cabin	double bed
Wardrobe	drawers and shelves
Bathroom	yes
Toilet	1
Toilet system	electric
Guest cabin 1	v-bed
Wardrobe	drawers and shelves

MACHINERY

No of engines	1
Make	YANMAR
Type	3JH4
HP	40
kW	29.44
Fuel	diesel
Year installed	2007
Engine cooling system	freshwater heat exchanger
Drive	sail-drive
Propeller blades	3 blades
Manual bilge pump	yes



HUNTER 38 LEGEND

Electric bilge pump	yes
Generator	Diesel 4 Kw (32h)
Battery charger	yes
Inverter	New Victron 3000
Solar panel	yes
Shorepower	with cable
Watermaker	12 volt Shenker 35

NAVIGATION

Compass	Magnetic - Arctic Riviera 3
Depth sounder	Raymarine
Log	yes
VHF	Raymarine
Autopilot	Raymarine 2024
Plotter	Raymarine Axiom III 2024
Personal computer	yes
AIS transceiver	Raymarine 700
Navigation lights	yes

EQUIPMENT

Sprayhood	yes
Bimini	yes
Cockpit table	yes
Boarding ladder	yes
Gangway	Folding
Anchor	yes
Anchor chain	10 cm diameter
Anchor 2	yes
Windlass	Lewmar electric with mooring bell
Radar reflector	yes
Fenders	6 cylindrical



HUNTER 38 LEGEND

Mooring lines	yes
TV	X2, with DAB antenna
Radio-cd player	yes

RIGGING

Fully battened mainsail	yes
Genoa	yes
Gennaker	yes



HUNTER 38 LEGEND



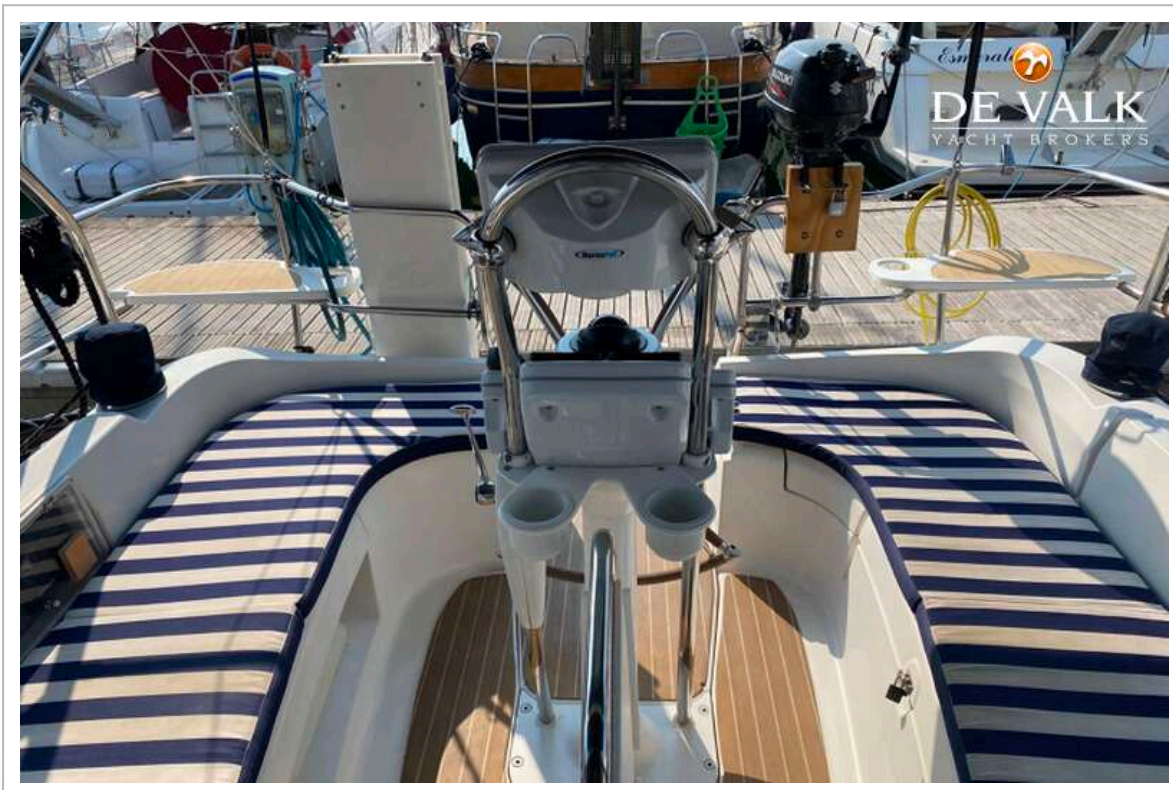
HUNTER 38 LEGEND



HUNTER 38 LEGEND



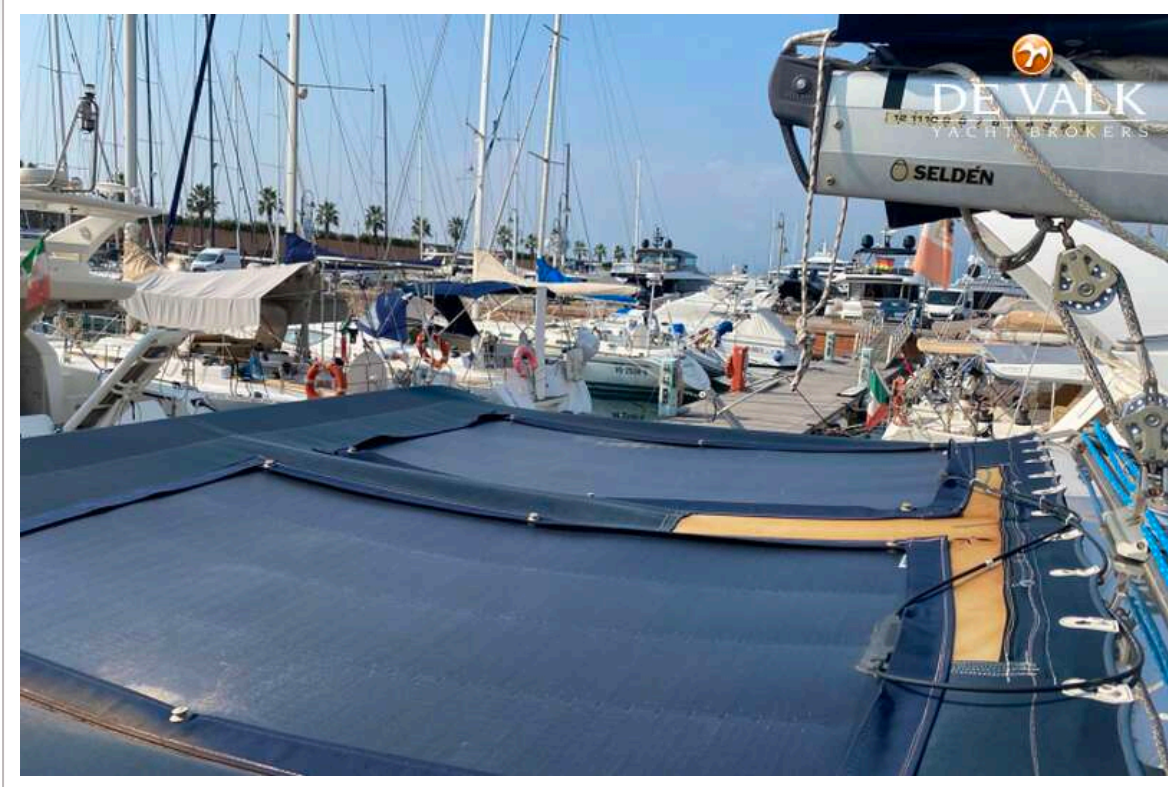
HUNTER 38 LEGEND



HUNTER 38 LEGEND



HUNTER 38 LEGEND



HUNTER 38 LEGEND



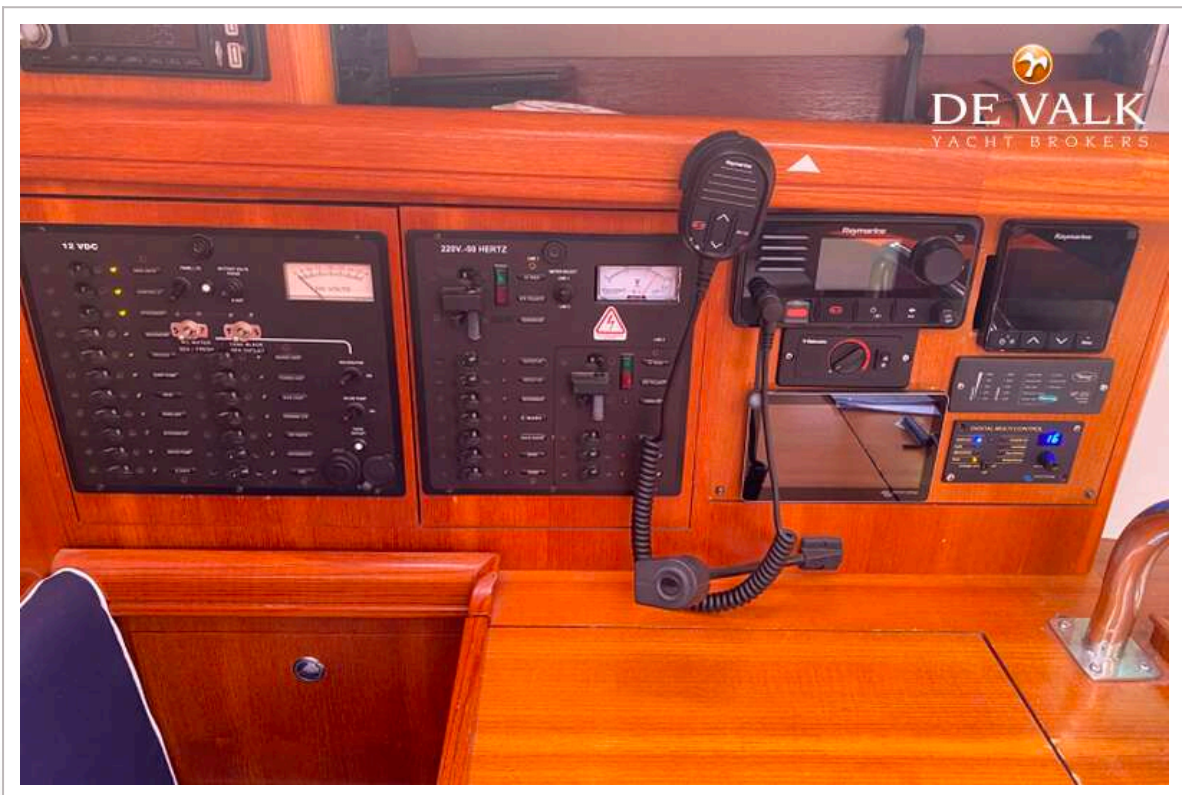
HUNTER 38 LEGEND



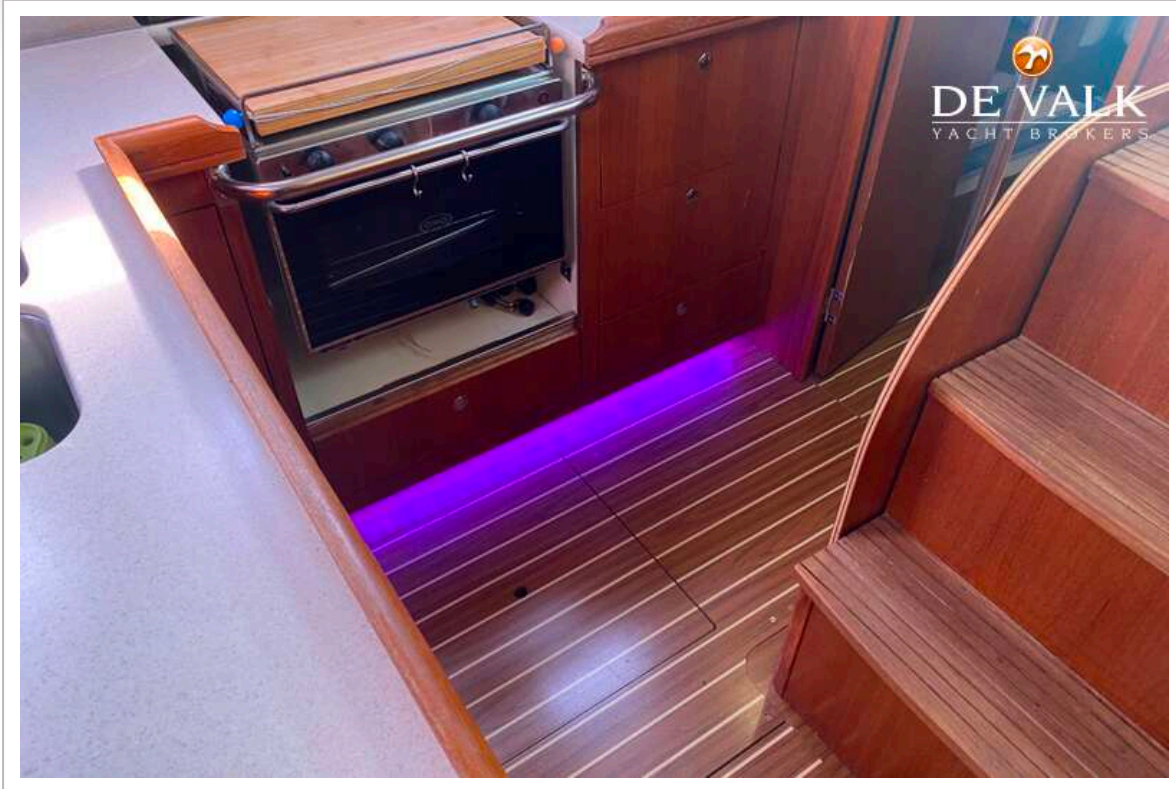
HUNTER 38 LEGEND



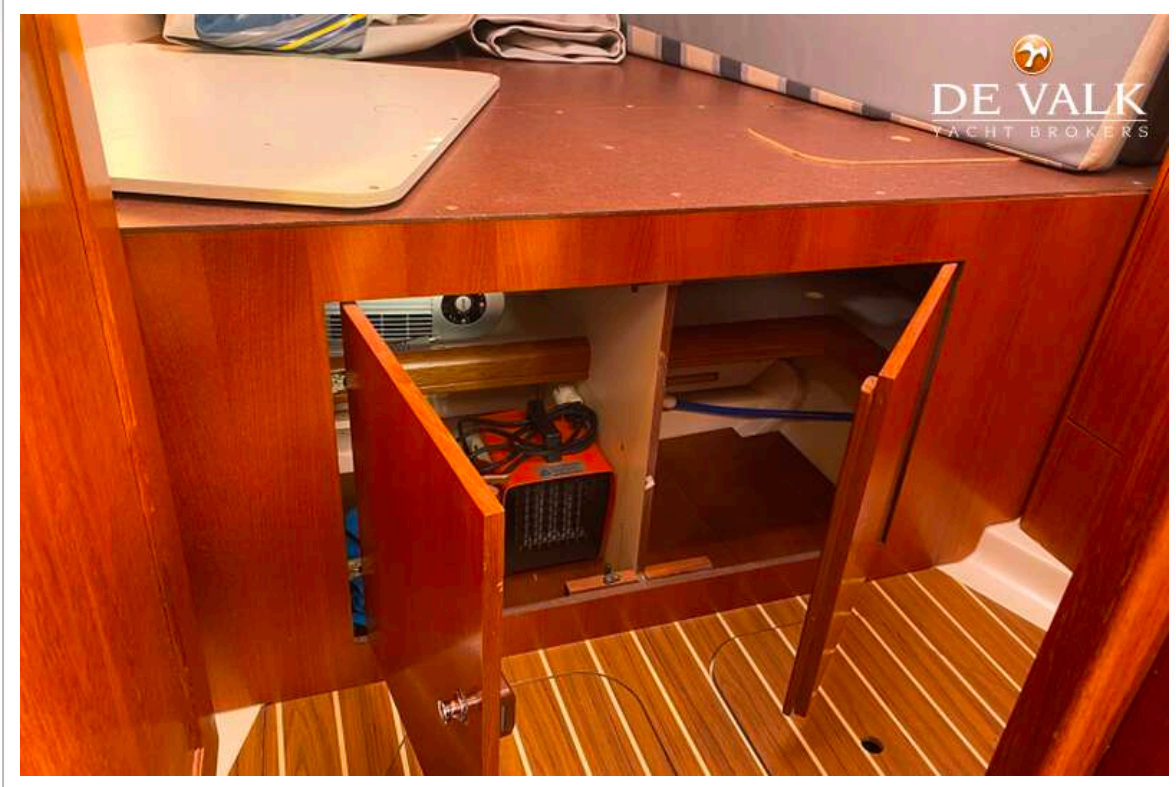
HUNTER 38 LEGEND



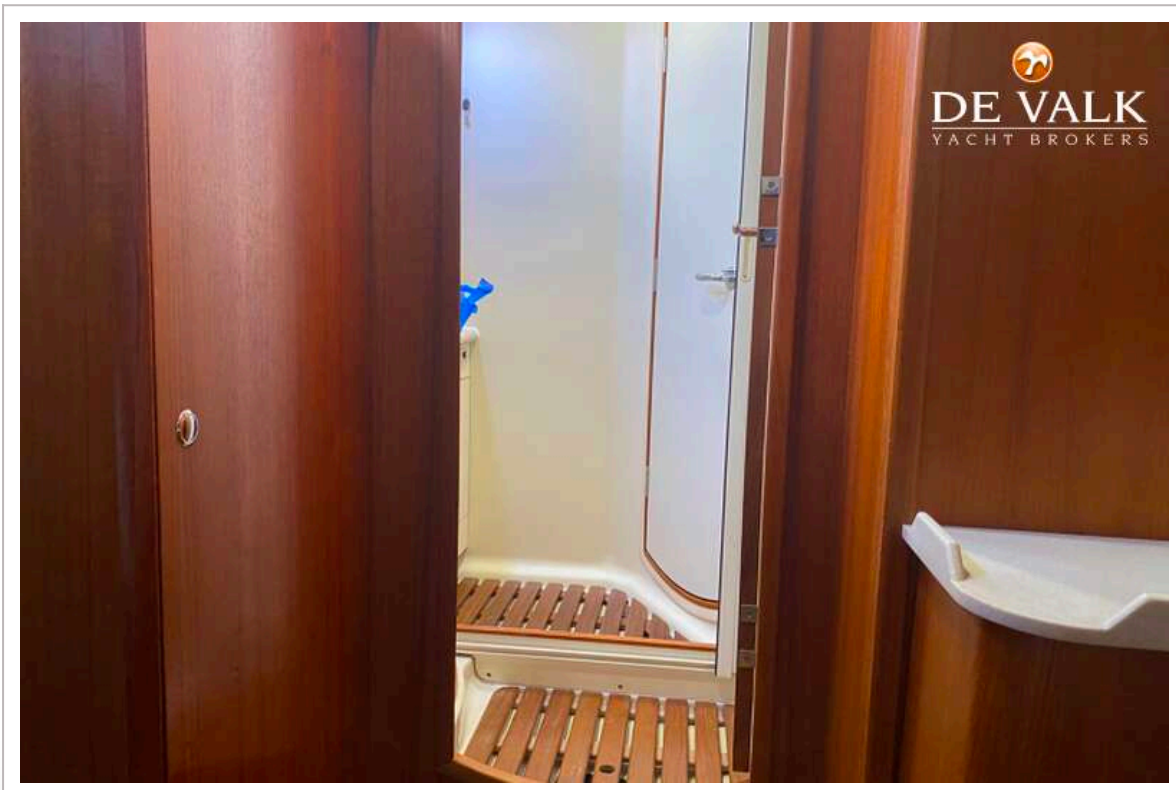
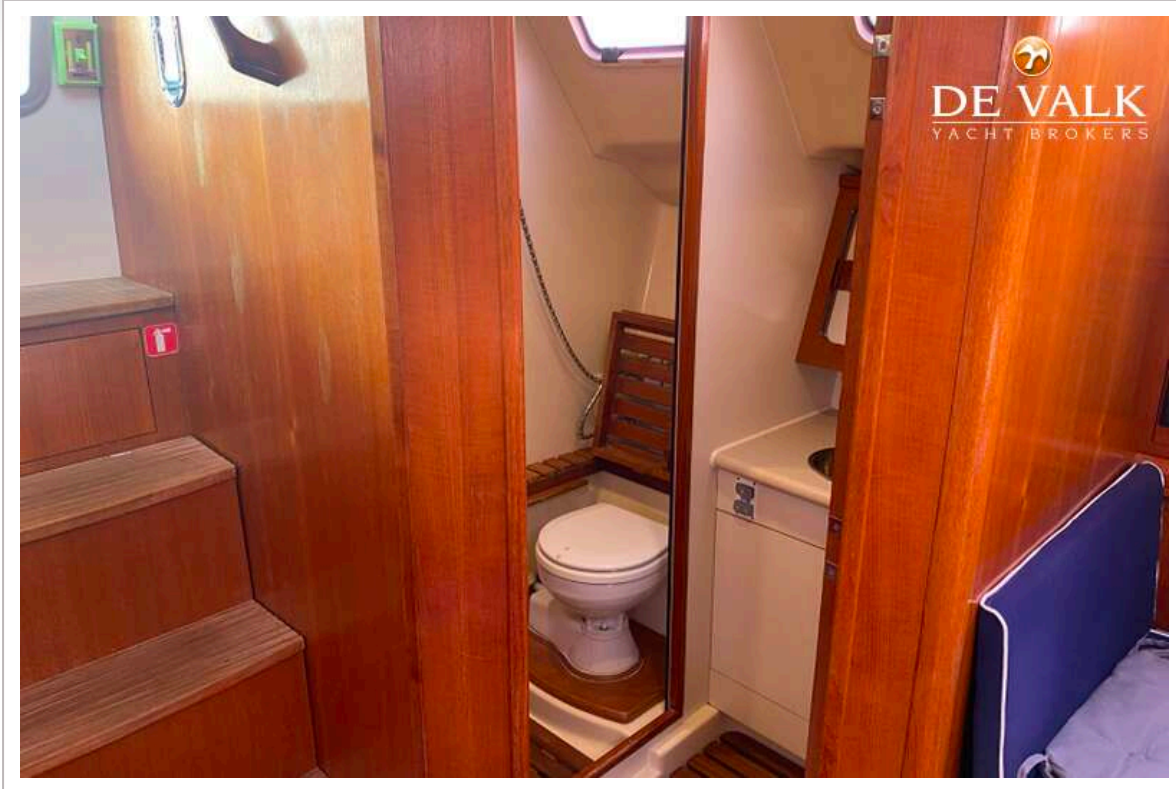
HUNTER 38 LEGEND



HUNTER 38 LEGEND



HUNTER 38 LEGEND



HUNTER 38 LEGEND



HUNTER 38 LEGEND



HUNTER 38 LEGEND

