



DE VALK
YACHT BROKERS

RODMAN 38



DE VALK
YACHT BROKERS

BROKERAGE | CHARTER | BERTHS | FINANCE | INSURANCE | YACHT MANAGEMENT

BROKER'S COMMENTS

This Rodman 38 built by the experienced Spanish shipyard is a superb flybridge motoryacht. Offering a great volume with a spacious cosy interior and opened kitchen, this Rodman 38 is very comfortable with two cabins with their own bathroom. This Rodman 38 is one of the best in his size with a great flybridge. Well maintained with low engine hours, she is ready to go!

Alan Deasti

SPECIFICATIONS

Dimensions	11.36 x 3.81 x 1.10 (m)	Builder	Rodman
Built	2005	Cabins	2
Material	GRP	Berths	4
Engine(s)	2 x Volvo Penta D6 diesel	Hp/Kw	2 x 310.00 (hp), 228.16 (kw)
Asking price	sold (VAT)	Lying	contact Antibes

CONTACT

Sales office	De Valk Antibes	Telephone	+33 492 91 0202
Address	2, Avenue de Verdun 06600 Antibes FR	E-mail	antibes@devalk.nl

DISCLAIMER

These particulars are given in good faith as supplied but cannot be guaranteed.



GENERAL

Model	RODMAN 38
Type	motor yacht
LOA (m)	11,36
Beam (m)	3,81
Draft (m)	1,10
Year built	2005
Builder	Rodman
Country	Spain
Displacement (t)	11
CE norm	B
Hull material	GRP
Hull colour	white
Superstructure material	GRP
Deck finish	teak
Portholes	stainless steel
Flybridge	yes
Flybridge suncover	New 2024
Fuel tank (litre)	1000 L (2 x 500L)
Level indicator (fuel tank)	yes
Blackwater tank (litre)	yes
Level indicator (blackwater)	yes

ACCOMMODATION

Cabins	2
Berths	4
Saloon	U shape sofa and bench
Galley	yes
Countertop	corian
Sink	stainless steel
Cooker	ceramic Fagor Innova



Microwave	Samsung
Fridge	yes
Freezer	yes
Hot water system	yes
Owners cabin	double bed
Wardrobe	hanging/drawers/shelves
Bathroom	en suite
Toilet	en suite
Toilet system	vacuum
Wash basin	in the bathroom
Shower	en suite
Guest cabin 1	twin single
Wardrobe	hanging and shelves
Bathroom	separate
Toilet	en suite
Toilet system	vacuum
Wash basin	in the bathroom
Shower	en suite
Flybridge	yes
Extra info	Fridge on fly

MACHINERY

No of engines	2
Make	Volvo Penta
Type	D6
HP	310
kW	228.16
Fuel	diesel
Cruising speed (kn)	18
Engine hours	399
Drive	shaft



Bowthruster	Vetus
Electric bilge pump	yes
Start battery	yes
Service battery	yes
Bowthruster battery	yes
Battery charger	yes
Shorepower	with cable

NAVIGATION

Compass	yes
Compass on flybridge	yes
VHF	Shipmate RS 8400
Radar	Raymarine RL70C
Plotter/GPS	Raymarine RL70C
Navigation lights	yes

EQUIPMENT

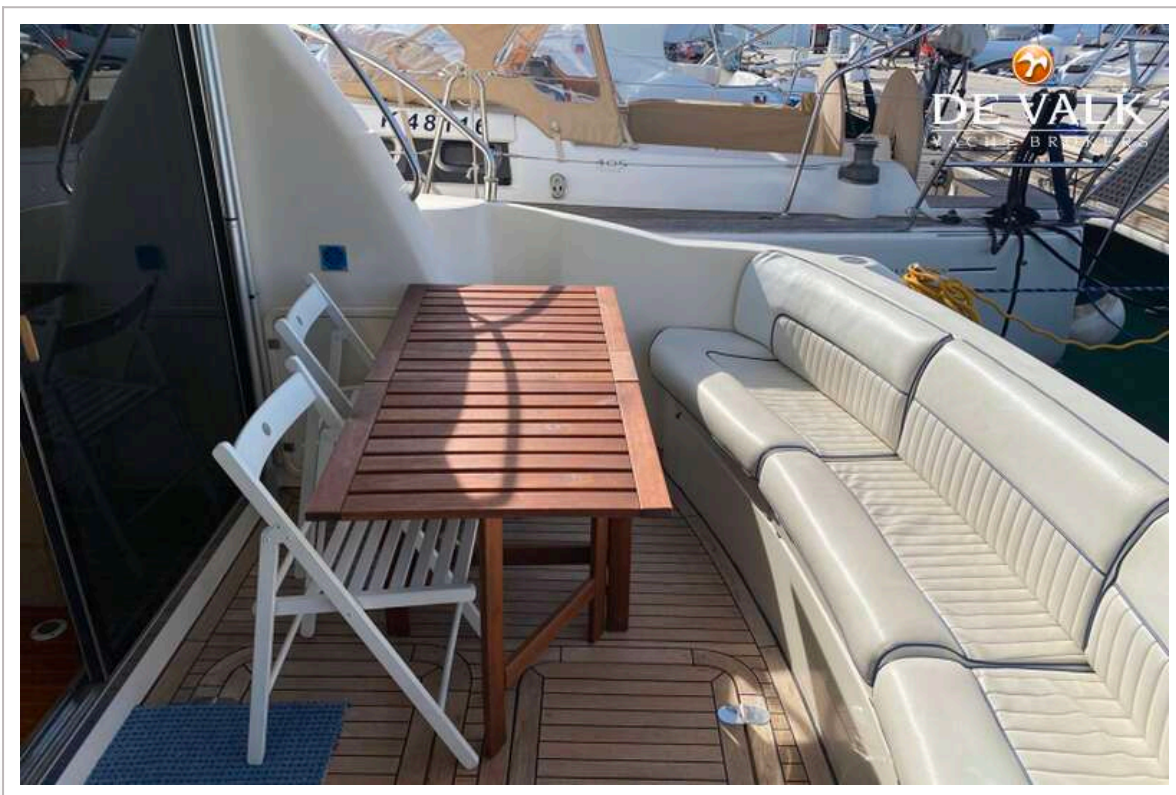
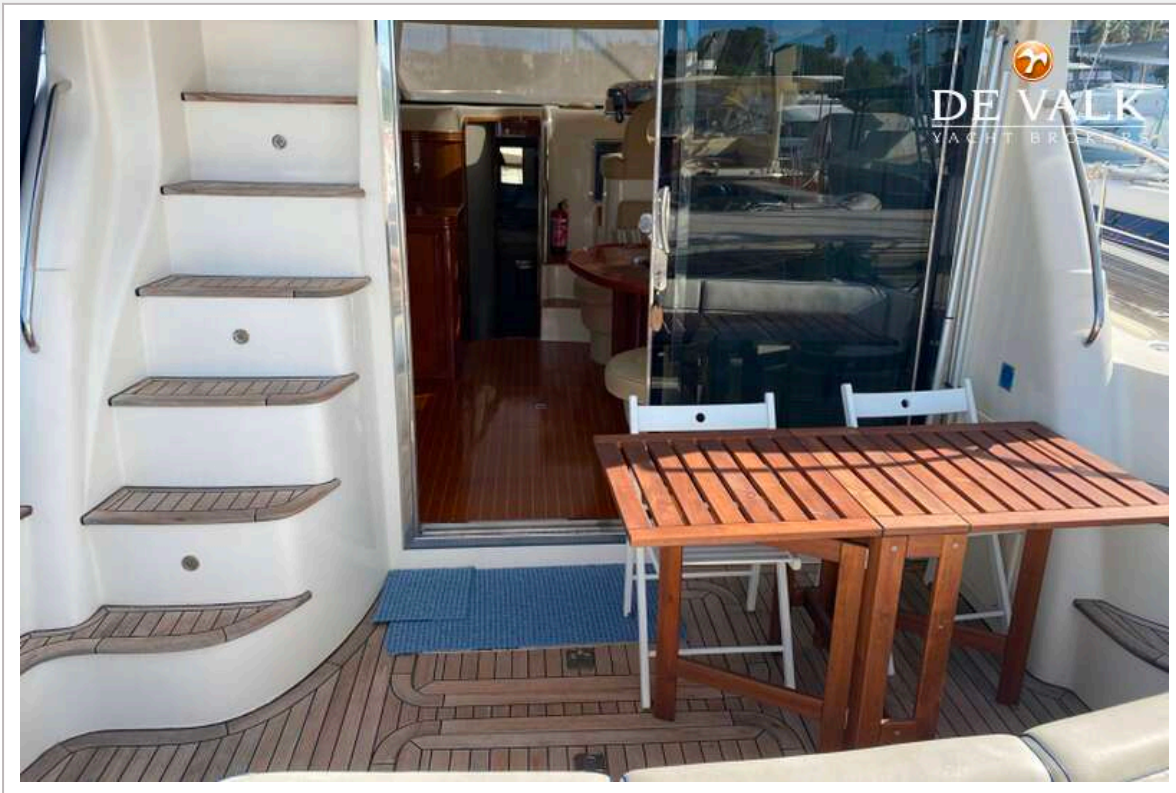
Cockpit cover	yes
Window cover	White for sun
Cockpit cushions	yes
Cockpit table	yes
Cockpit chairs	yes
Bathing platform	yes
Boarding ladder	stainless steel With teak steps
Gangway	Besenzoni 150 kg
Deck shower	Whale hot/cold
Anchor	yes
Anchor chain	yes
Windlass	electrical Lofrans
Horn	yes



RODMAN 38



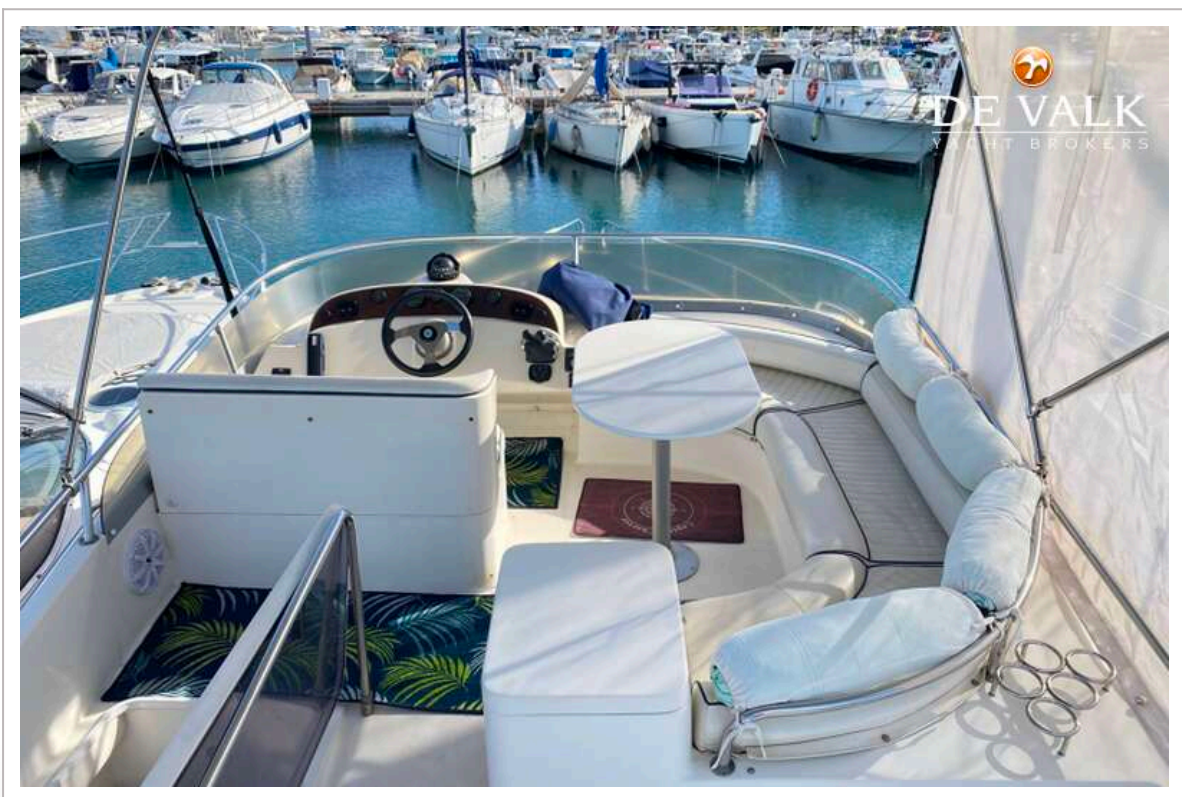
RODMAN 38



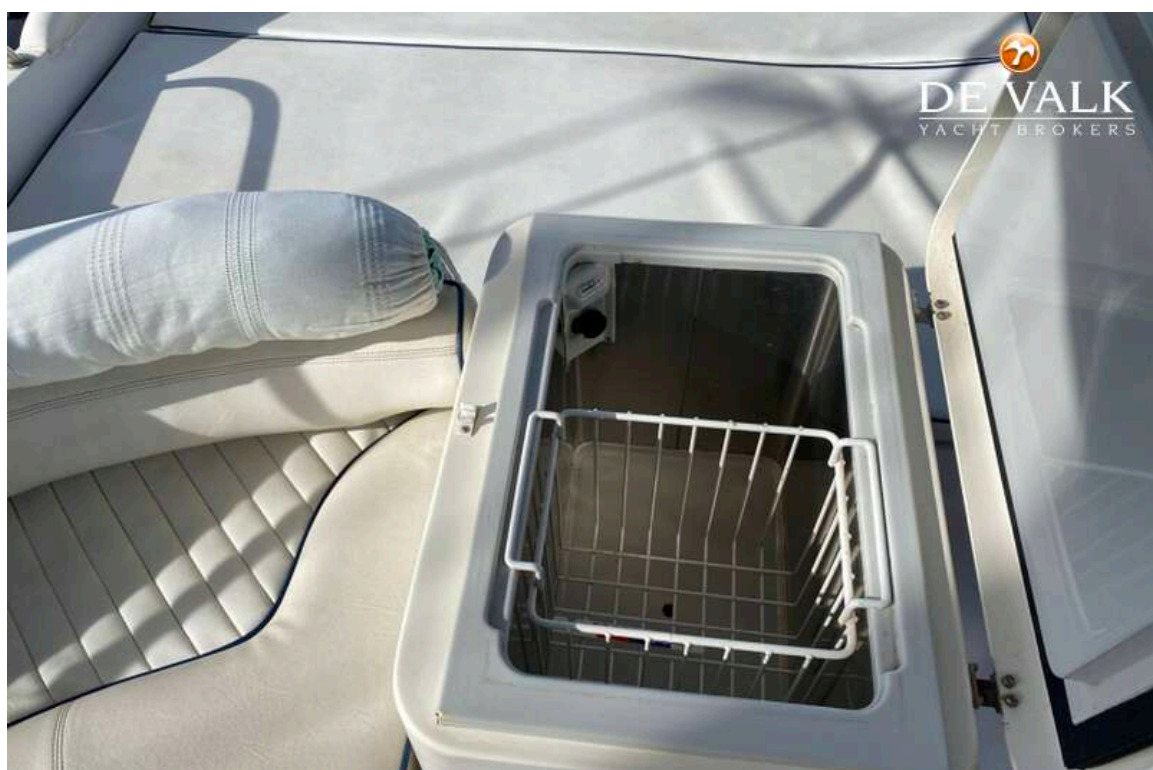
RODMAN 38



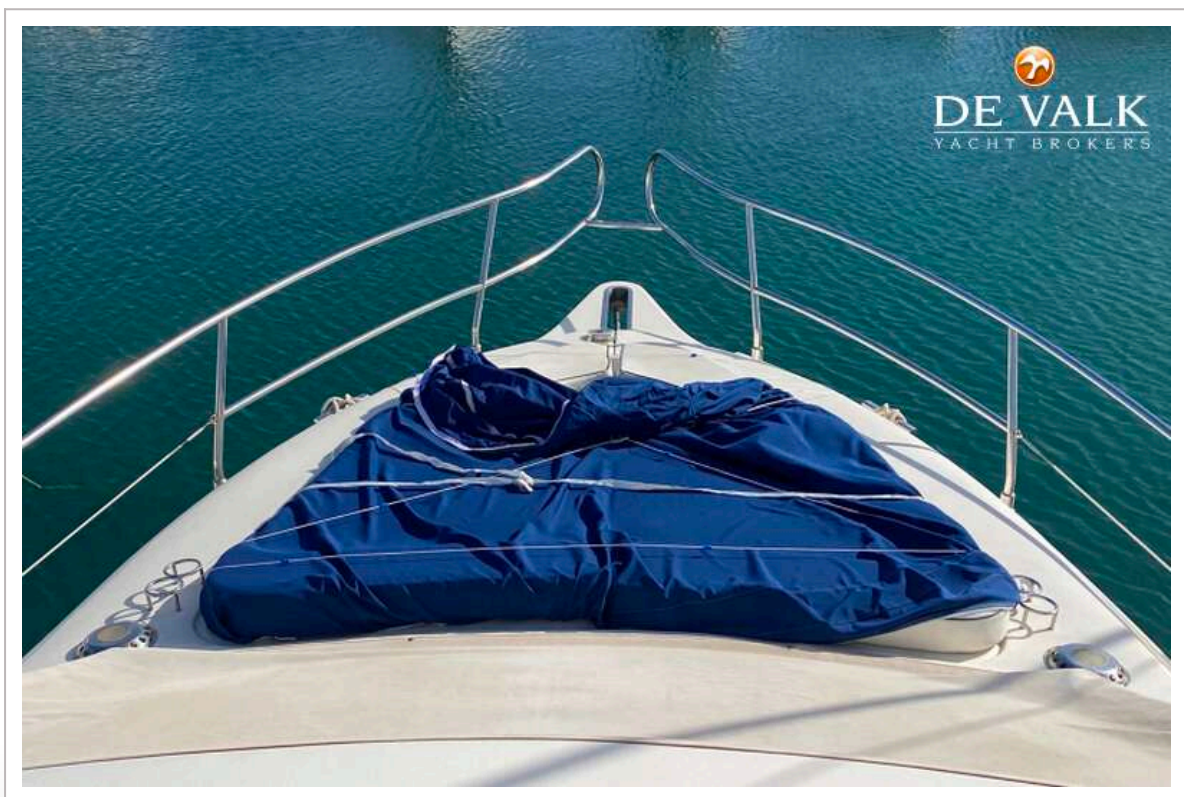
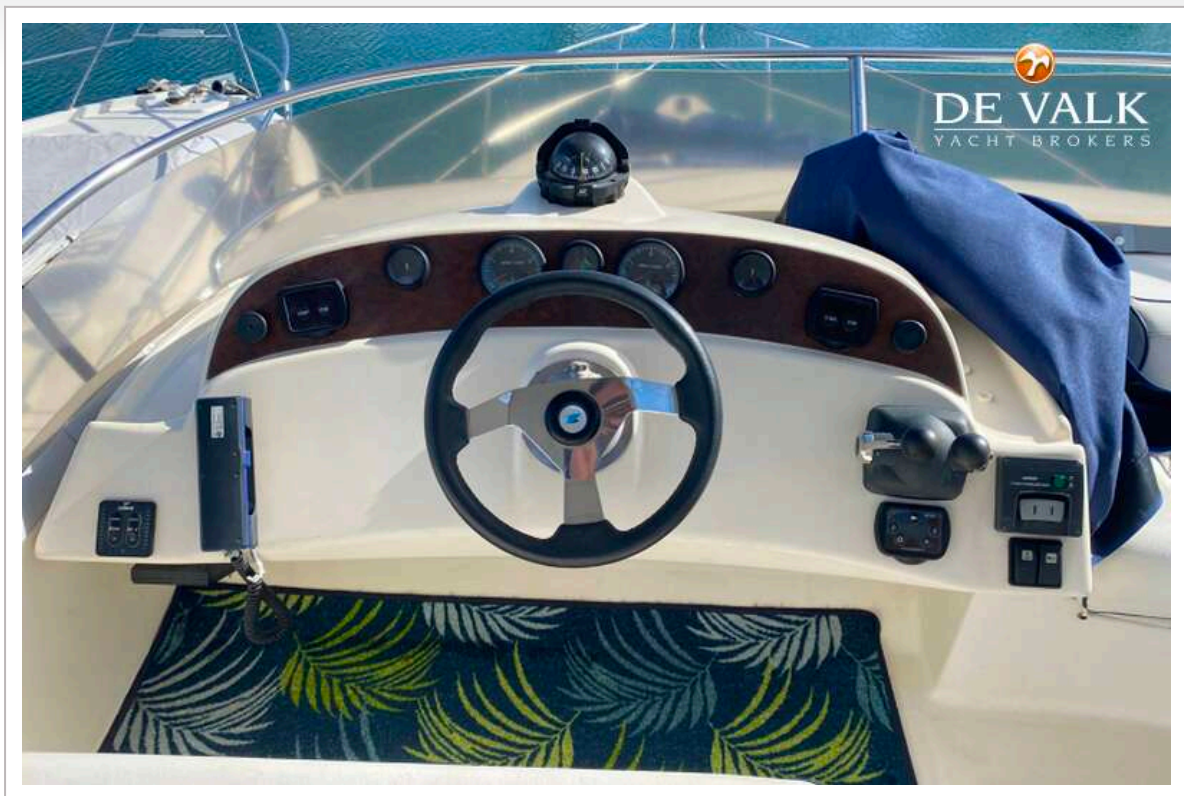
RODMAN 38



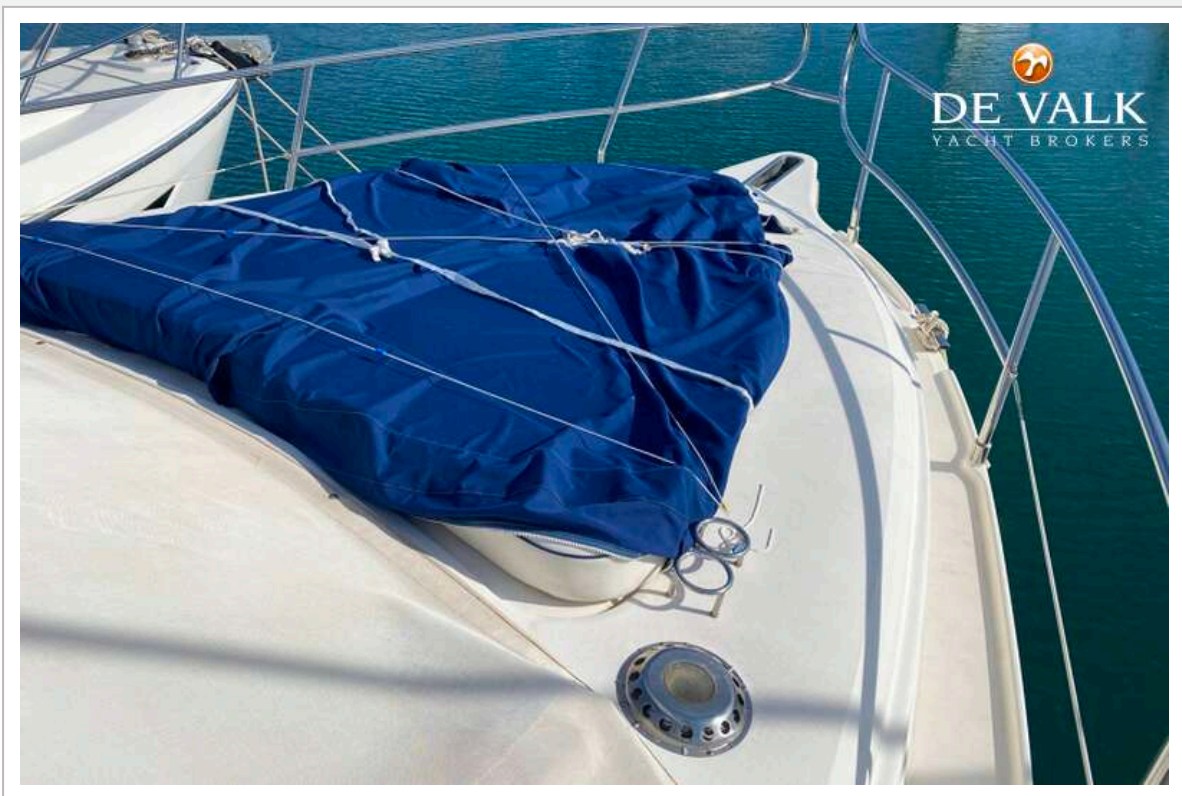
RODMAN 38



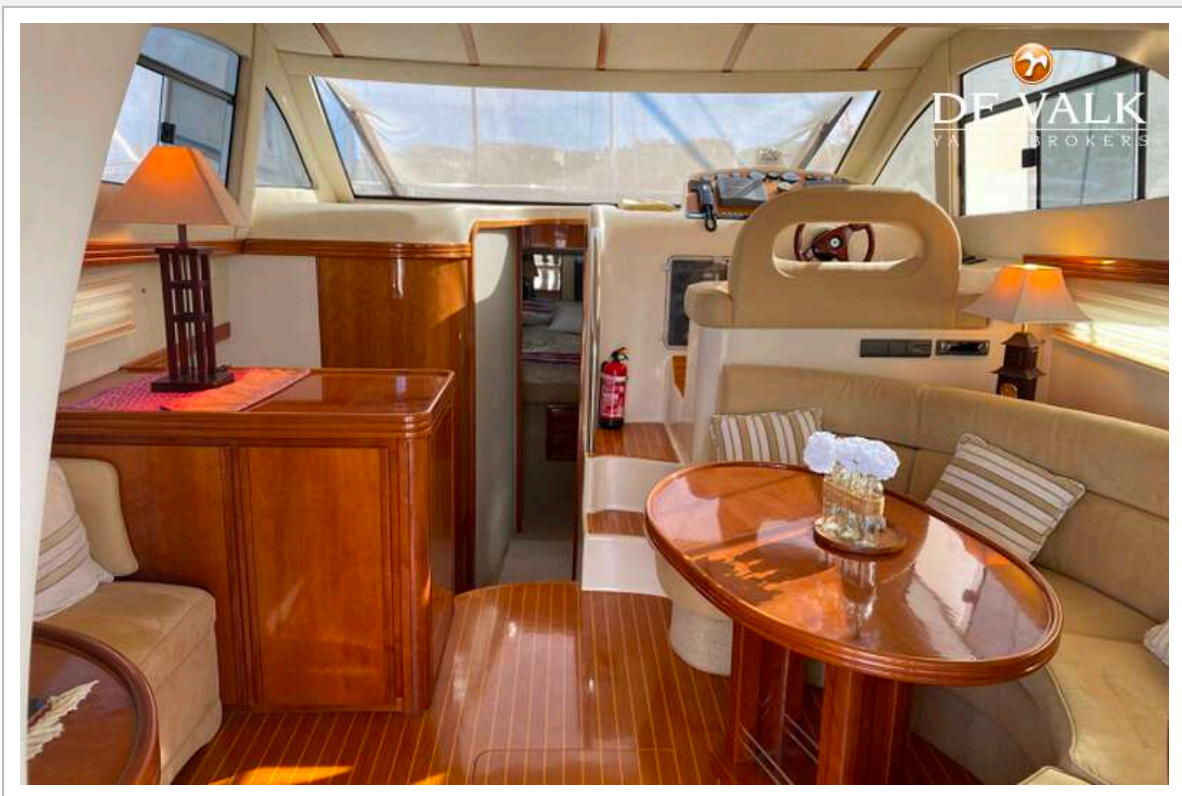
RODMAN 38



RODMAN 38



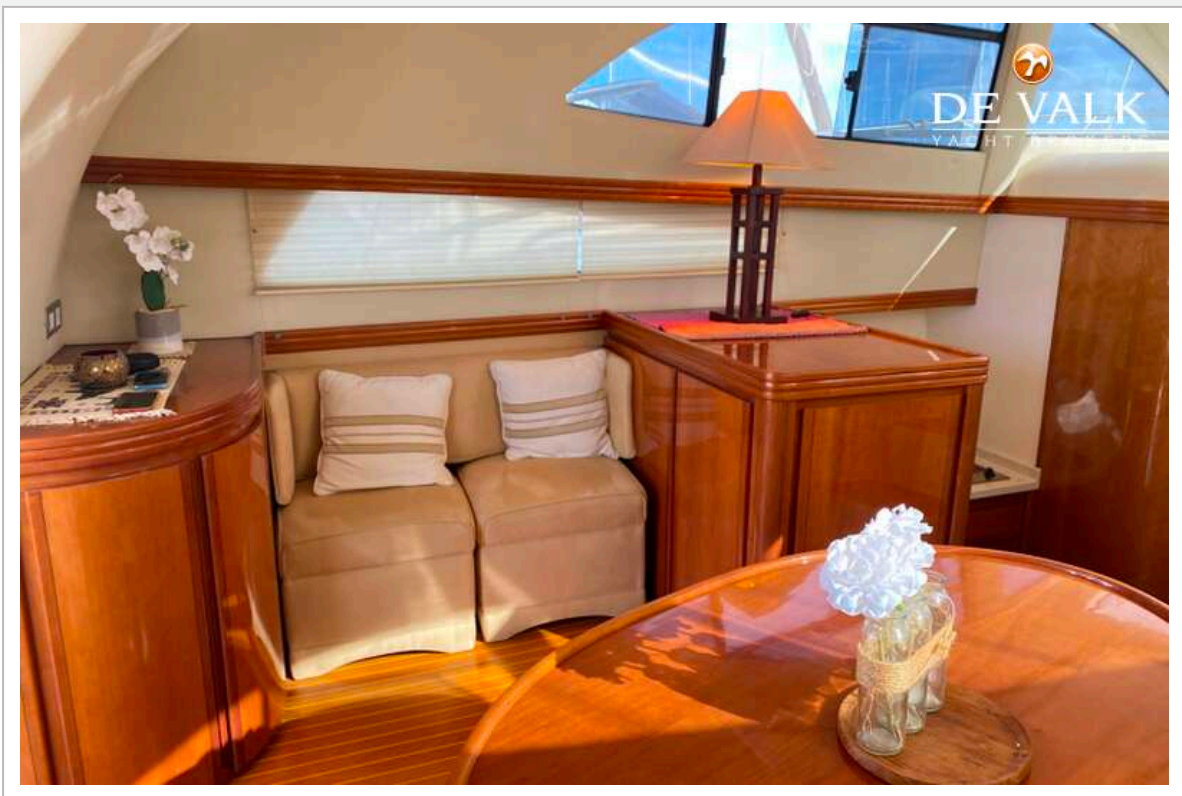
RODMAN 38



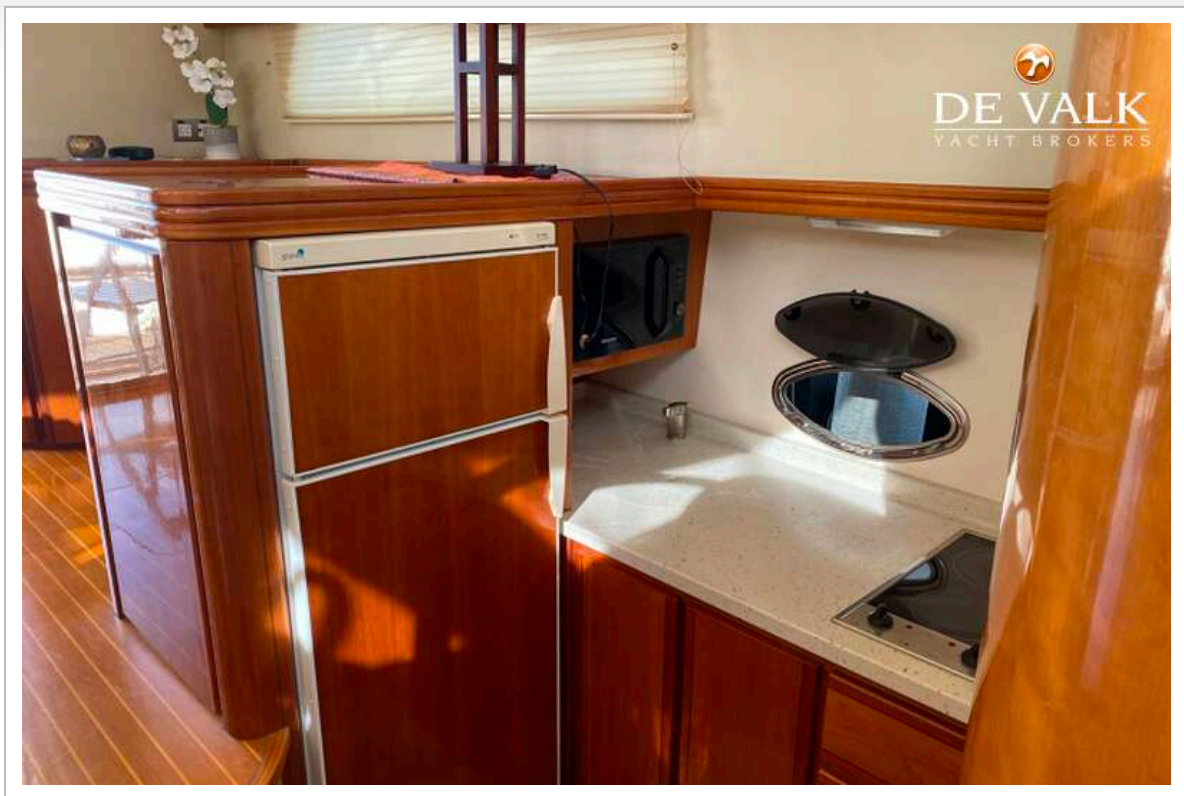
RODMAN 38



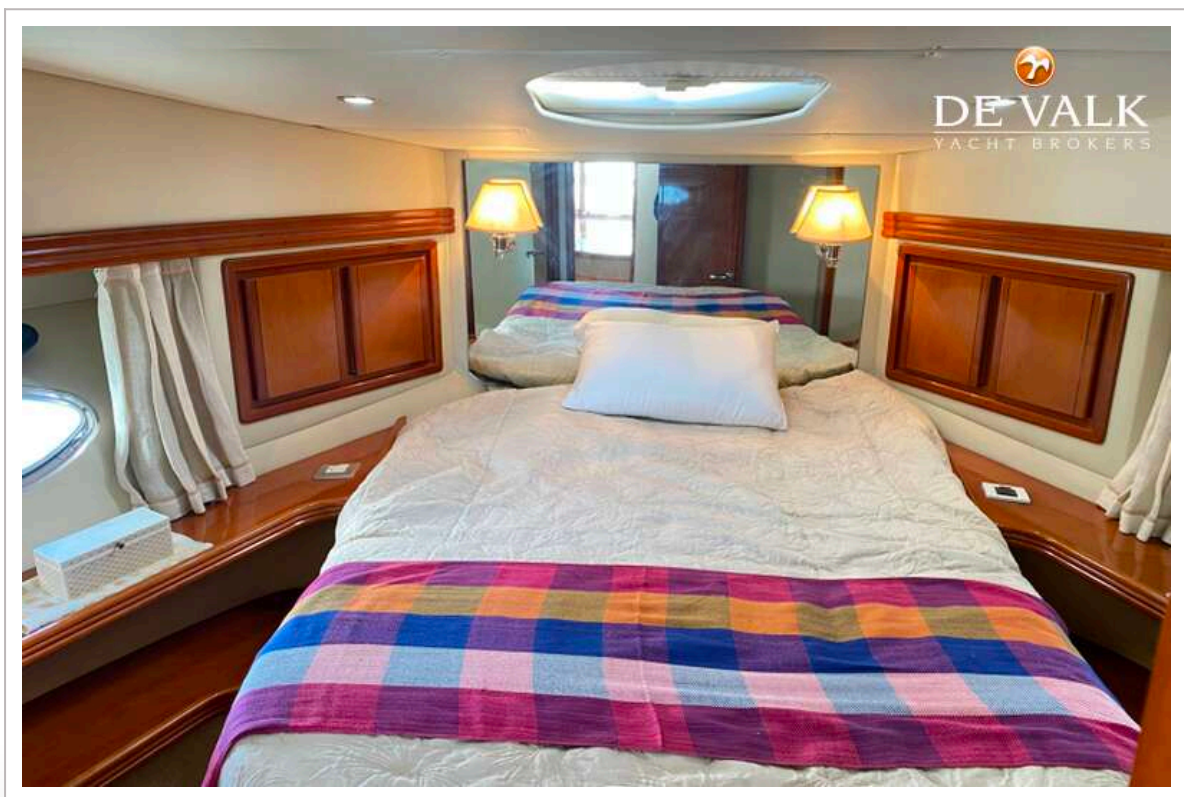
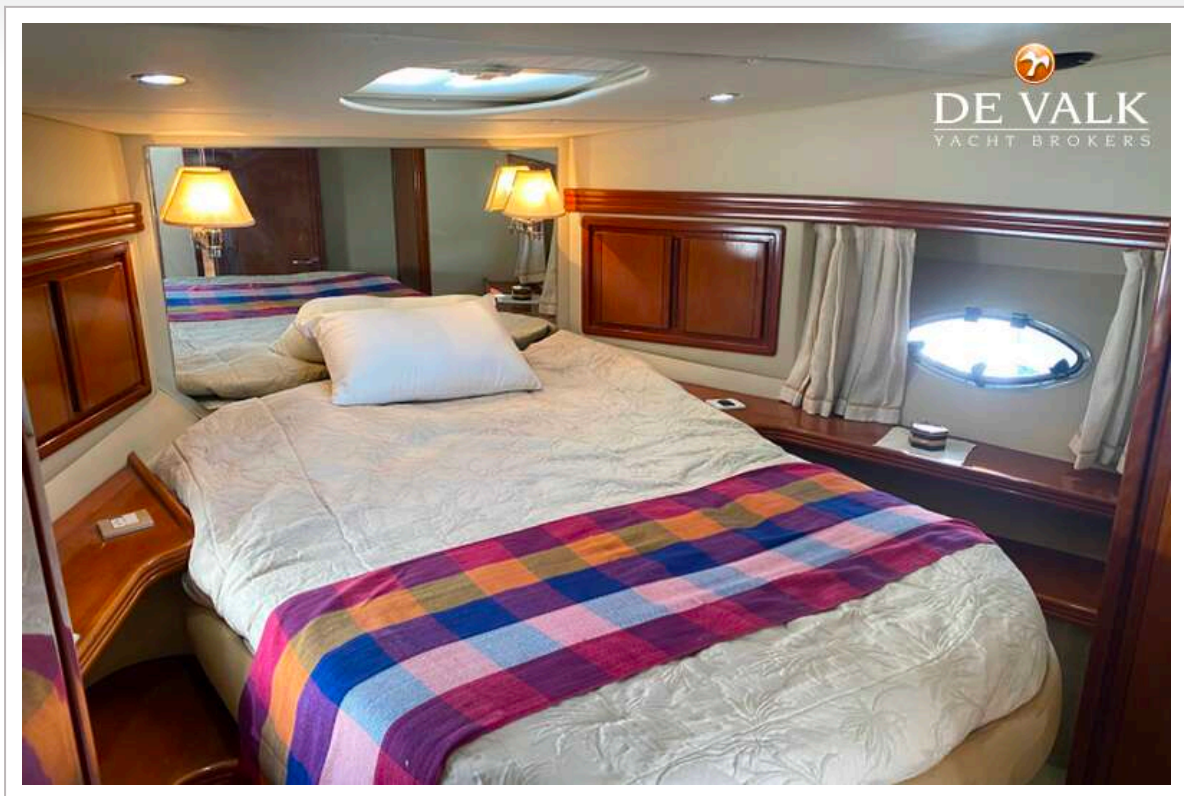
RODMAN 38

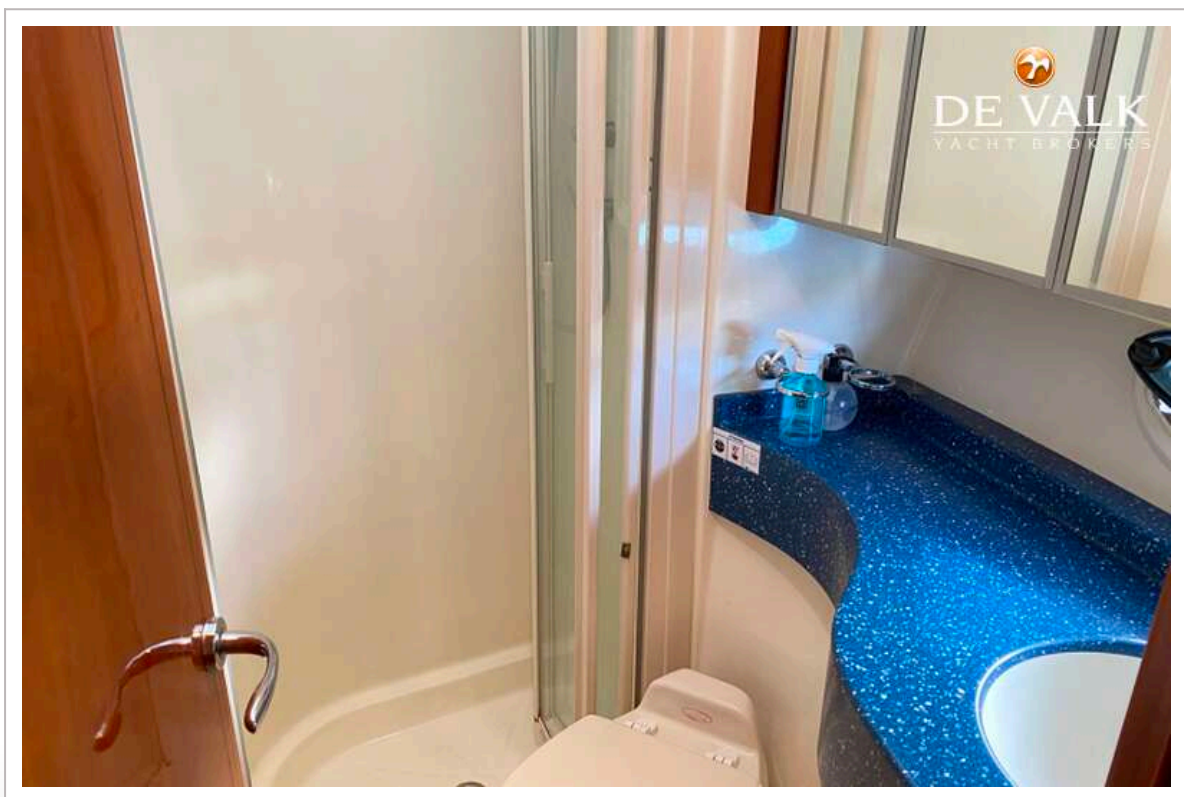
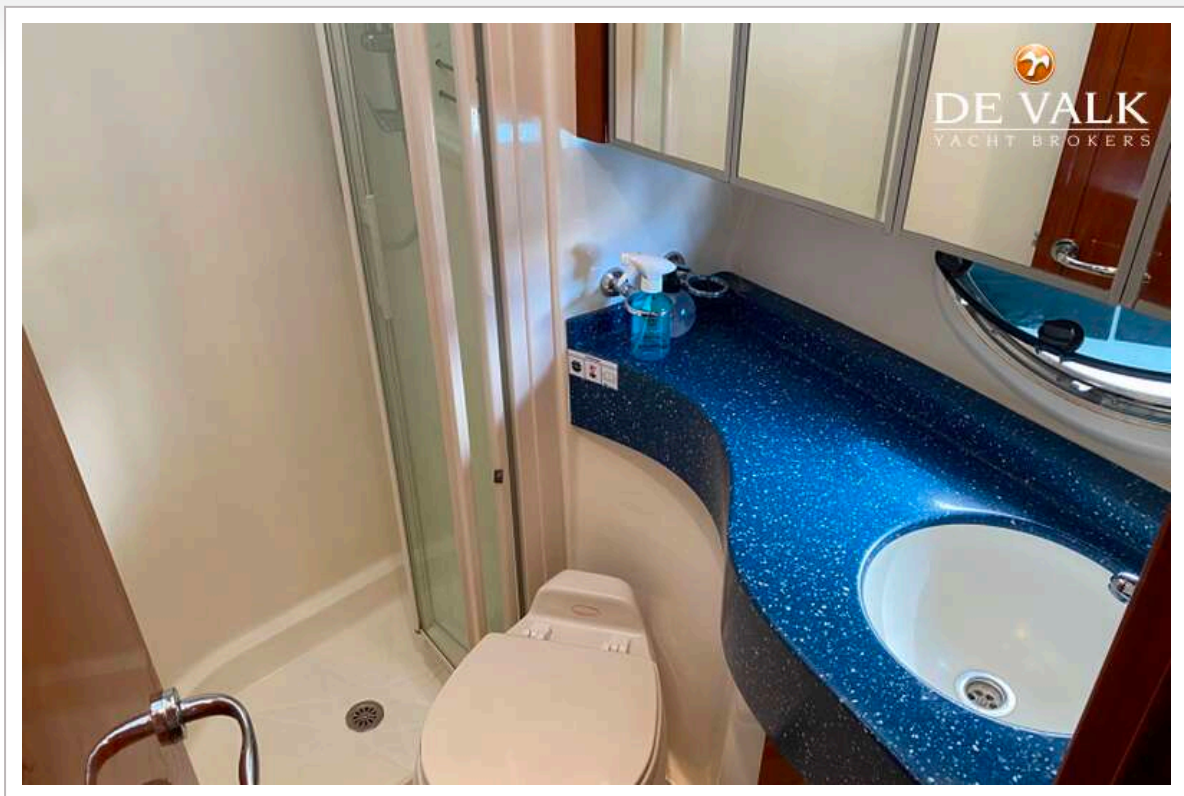


RODMAN 38

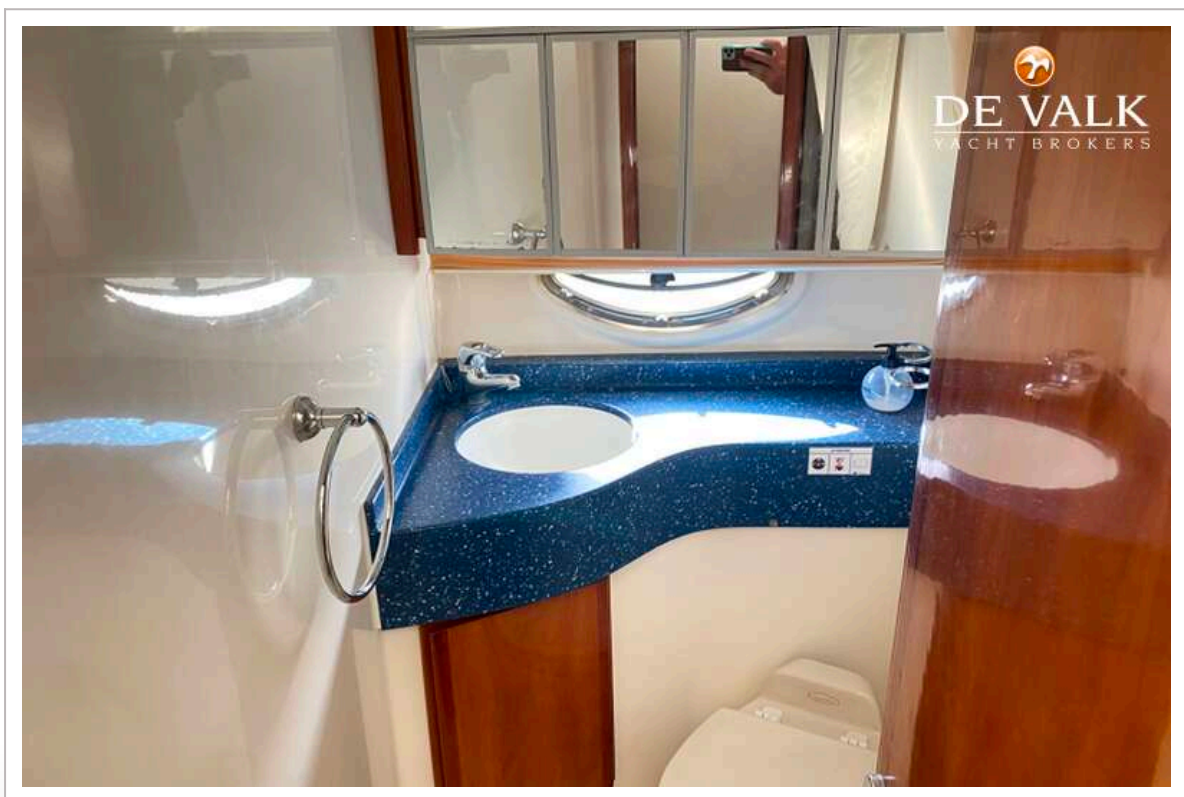


RODMAN 38





RODMAN 38



RODMAN 38

