



NAJAD 510



BROKER'S COMMENTS

This beautiful classic has been fully prepared for long-distance circumnavigation in the recent years. This Carl Beyer-designed Najad 510 features twin engines for increased reliability and easy manoeuvring in port. Many systems and fittings have been updated or newly installed for the journey. Just have a look at her impressive specification list to imagine the whole story. No surprise, she receives comprehensive annual servicing. Every essential for offshore sailing is on board and fully up-to-date. This is a top-quality yacht, ready to set sail immediately for distant horizons.

Willem Koopmans

SPECIFICATIONS

Dimensions	16.20 x 4.60 x 2.20 (m)	Builder	Najad Varvet AB
Built	1993	Cabins	4
Material	GRP	Berths	7
Engine(s)	2 x Volvo Penta MD31 diesel	Hp/Kw	2 x 63.00 (hp), 46.37 (kw)
Asking price	€ 379.000 (VAT Paid)	Lying	contact sales office

CONTACT

Sales office	De Valk Costa Blanca	Telephone	+34 96 50 21 569
Address	Costa Blanca Region 03730 Javea Alicante ES	E-mail	costablanca@devalk.nl

DISCLAIMER

These particulars are given in good faith as supplied but cannot be guaranteed.



GENERAL

Model	NAJAD 510
Type	sailing yacht
LOA (m)	16,20
LWL (m)	13,45
Beam (m)	4,60
Draft (m)	2,20
Air draft (m)	21,00
Headroom (m)	2,00
Year built	1993
Builder	Najad Varvet AB
Country	Sweden
Designer	Carl Beyer
Displacement (t)	21
Ballast (tonnes)	7
CE norm	NA
Hull material	GRP
Hull colour	off-white
Hull shape	round-bilged
Keel type	fin keel
Superstructure material	GRP
Deck material	GRP
Deck finish	teak New teak deck from 2017 by Rob Fritz (top carpenter)
Superstructure deck finish	teak New teak deck from 2017
Cockpit deck finish	teak New teak deck from 2017
Antifouling (year)	2026; in 2021 hull completely redone with new epoxy layers
Window frame	aluminium
Window material	tempered glass
Portholes	yes
Fuel tank (litre)	stainless steel 350
Fuel tank 2 (litre)	stainless steel 350



Level indicator (fuel tank)	yes
Freshwater tank (litre)	stainless steel 1200, cleaned UV lamp double filter in between
Level indicator (freshwater)	yes
Blackwater tank (litre)	stainless steel 120
Blackwater tank extraction	yes
Wheel steering	cable steering Semi balanced rudder blade 2021 complete refit bearings etc
Outside helm position	Wheels with new leather
Emergency tiller	yes
More info on paintwork	Dry docked, new antifouling planned March 2026
Extra info	Centre cockpit
Extra info	More pictures to be added end of March 2026

ACCOMMODATION

Cabins	4
Berths	7
Interior	mahogany
Layout	Owner aft cabin
Floor	teak and holly Carpet on
Open cockpit	yes
Saloon	LED ceiling lights
Headroom saloon (m)	2
Heating	Eberspacher D7L, 7 kW (not tested)
Air-conditioning	reverse cycle airco 2x, 1x 16K BTU, 1x 12K BTU, Climma, new 2023
Navigation center	yes
Chart table	yes
Aft Cabin	yes
Dinette	yes
Galley	yes
Countertop	corian New installed 2017
Sink	stainless steel Double



Cooker	electric Force10 3 burner
Oven	electric Force10
Fridge	third fridge installed Webasto top loader and second front loader from 2017
Hot water system	220V + engine Boiler
Dishwasher	Siemens, new 2019
Owners cabin	French bed
Bed length (m)	2
Wardrobe	hanging/drawers/shelves
Bathroom	en suite
Toilet	en suite
Toilet system	electric
Wash basin	in the bathroom
Shower	en suite
Guest cabin 1	double bed
Bed length (m)	2
Wardrobe	hanging and shelves
Bathroom	shared
Toilet	shared
Toilet system	electric
Wash basin	in the bathroom
Shower	shared
Guest cabin 2	bunk bed
Bed length (m)	1.90
Wardrobe	hanging and shelves
Bathroom	shared
Toilet	shared
Toilet system	electric
Wash basin	in the bathroom
Shower	shared
Guest cabin 3	Used to be pilot bed, now in use as work space incl. bench
Guest cabin 4	Now in use as work space, with bench



Washing machine

New 2016

MACHINERY

No of engines

2

Make

Volvo Penta

Type

MD31

HP

63

kW

46.37

Fuel

diesel

Year installed

1993

Year of overhaul

In full service at Volvo Oscar

Maximum speed (kn)

9

Cruising speed (kn)

8

Consumption (l/hr)

3,5

Engine hours

3100/2100

Engine cooling system

freshwater heat exchanger 2016 complet overhaul cooling, pumps etc

Drive

shaft

Engine controls

bowden cable

Gearbox

mechanical

Bowthruster

Maxpower CT165 16 hp from 2018, brushes replaced 2024

Exhaust

watercooled

Propeller type

feathering

Propeller blades

3

Propeller shaft material

stainless steel

Shaft lubrication

water

Manual bilge pump

yes

Electric bilge pump

yes

Electrical installation

12/24/230

Generator

wet exhaust Fischer Panda 6 kW

Running hours generator

1100 ca.



Start battery	24 Volt, new 2024
Service battery	Lithium Life Po4 912 Ah
Generator battery	yes
Bowthruster battery	New 2024
Battery charger/inverter	Victron Quattro 24/120/5000, new 2021
Solar panel	3x 215 Watt 24V & GX panel, new 2023
Shorepower	Extra long cable 16/32/63 Amp
Insulation transformer	Victron 7 kW, new 2023
Watermaker	D100 Duo 12/230 Volt, new 2024, only used 30 hrs

NAVIGATION

Compass	Plath
Electric compass	On pilot
Multi control display	Raymarine I70, new 2017
Depth sounder	Raymarine I70S
Depth sounder/log	Raymarine I70S
Forw. looking depth sounder	Echopilot 3D forward looking sonar, new 2025
Log	yes
Windset	yes
VHF	Raymarine Ray60 inside and outside
Autopilot	Raymarine P70 on 3 positions from 2017
Rudder angle indicator	On Raymarine P70
Radar	Raymarine Quantum, new 2023
Radar/GPS/plotter	2x Raymarine Axiom Pro 12" in cockpit and 1x 9", all new 2025
Weather receiver	Weather chart/PC
AIS transponder	Raymarine AIS 650
EPIRB	yes
Navigation lights	yes
Extra info	2021 new lineair drive type 3 Raymarine remote smart controler
Extra info	Ocean Resque ME PLB with AIS



EQUIPMENT

Fixed windscreen	Tempered glass
Sprayhood	New 2017- 2025 redone and reinforced
Cockpit cover	Cockpit tent UK/De Vries
Bimini	New 2017- 2025 redone and reinforced
Winter cover	UK/De Vries
Cockpit cushions	New 2023
Cockpit table	New 2017 by Rob Fritz
Bathing platform	Inflatable swimming platform attached to stern
Boarding ladder	yes
Deck shower	New installation 2021
Anchor	CQR Plough 35 kg
Anchor chain	Bruce, galvanised stainless steel 60 mtr
Anchor 2	CQR Plough
Anchor chain	Bruce, galvanised stainless steel 60 mtr
Chain counter	New installed 2024
Windlass	electrical 2016 refit and 2021 Quick remote control
Dinghy	Highfield 290 UL (Ultralite), new 2023
Outboard	EPropulsion 1.0 EVO
Davits	Built-in in new custom solar arch from 2023
Sea railing	wire
Railing side opening gates	yes
Life raft	container ISO 9650 from 2024
Life raft (pers)	6
Last life raft survey	New 2024
Radar reflector	yes
Fenders	New fender covers 2024
Spare parts	Loaded
TV	Samsung 43 inch from 2024
Satellite	Starlink 2023 + mini Starlink as spare from 2025
Radio-cd player	Fusion, new 2025



DVD player	yes
Cockpit speakers	yes
Speakers in salon	yes
Clock - barometer	yes
Latest extinguisher survey	2024
Extinguisher in engine room	yes
Auto extinguisher system	yes
Extra info	Seacocks replaced 2017 & 2018
Extra info	All hatches replaced by Lewmar 2018
Extra info	Mini dive compressor from 2024

RIGGING

Rigging	sloop
Standing rigging	wire New 2016
Brand mast	Seldén New Selden boom 2024
Material mast	aluminium
Spreaders	2
Keel stepped mast	New mast foot 2018
Mainsail	UK/ De Vries 2016 50 m2
Fully battened mainsail	Added 2017 4 carbon vertical battens
Stoway mast	Electric
Cutterstay	New 2016
Jib	UK/Halsey, triradial 32,5 m2, new 2011
Genoa	89 m2 UK/De Vries from 2017
Genoa furler	electric Selden Furlex 400E from 2016
Gennaker	Selden GX25 for gennaker 2021
Reefing System	main in-mast furling
Backstay adjuster	Overhail hydraulic 2021
Boomvang	gasspring Selden new 2021
Primary sheet winch	electric Andersen 62, new 2016
Secondary sheet winch	electric Andersen 50/Lewmar 52



Halyard winches

2x Lewmar ST40 2x Lewmar ST25

Spi-pole

Carbon 2020

Jockey-pole

yes

Gennaker pole

Carbon 2020

Extra info

Dyneema running rigging new 2021



NAJAD 510



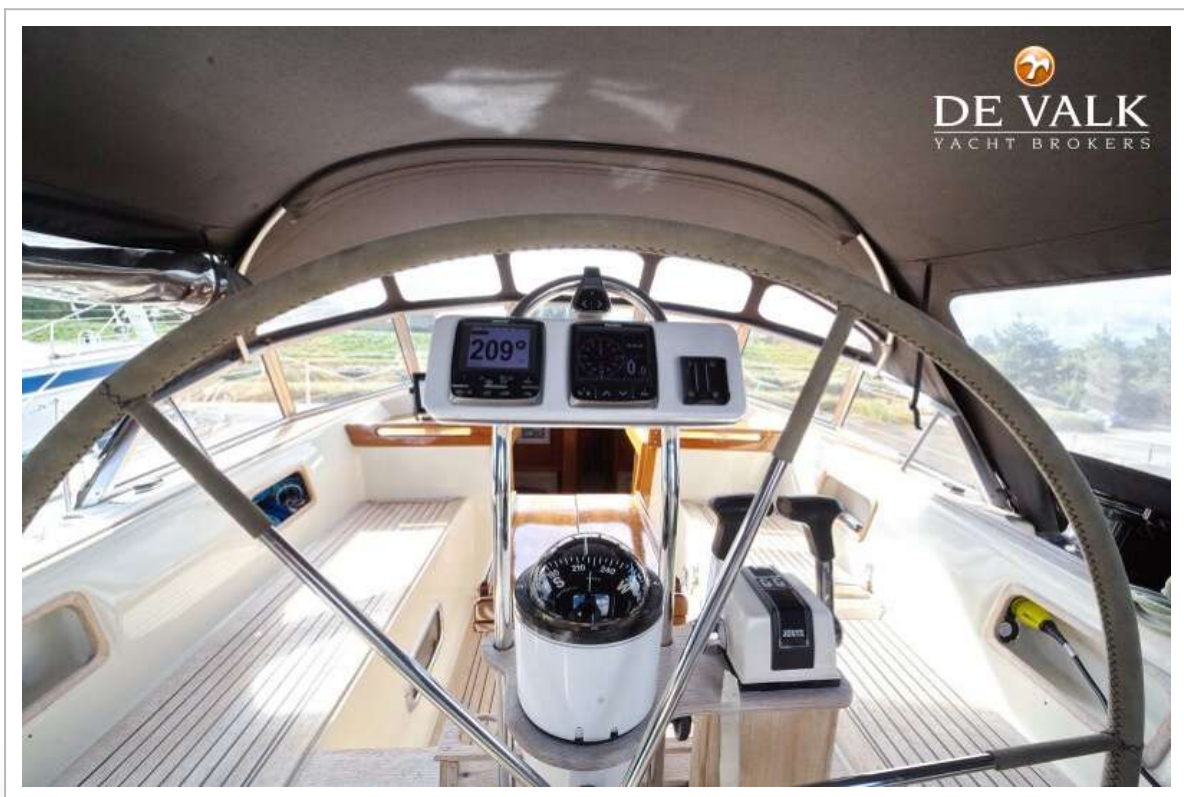
NAJAD 510



NAJAD 510



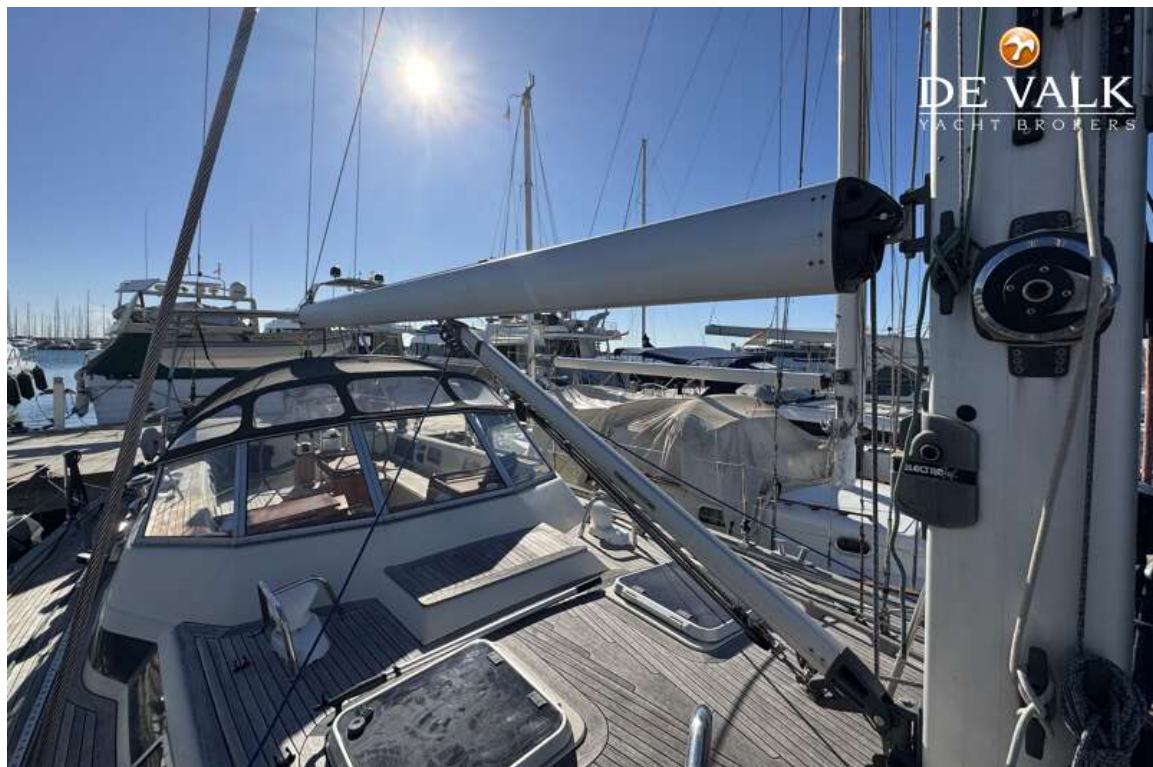
NAJAD 510



NAJAD 510



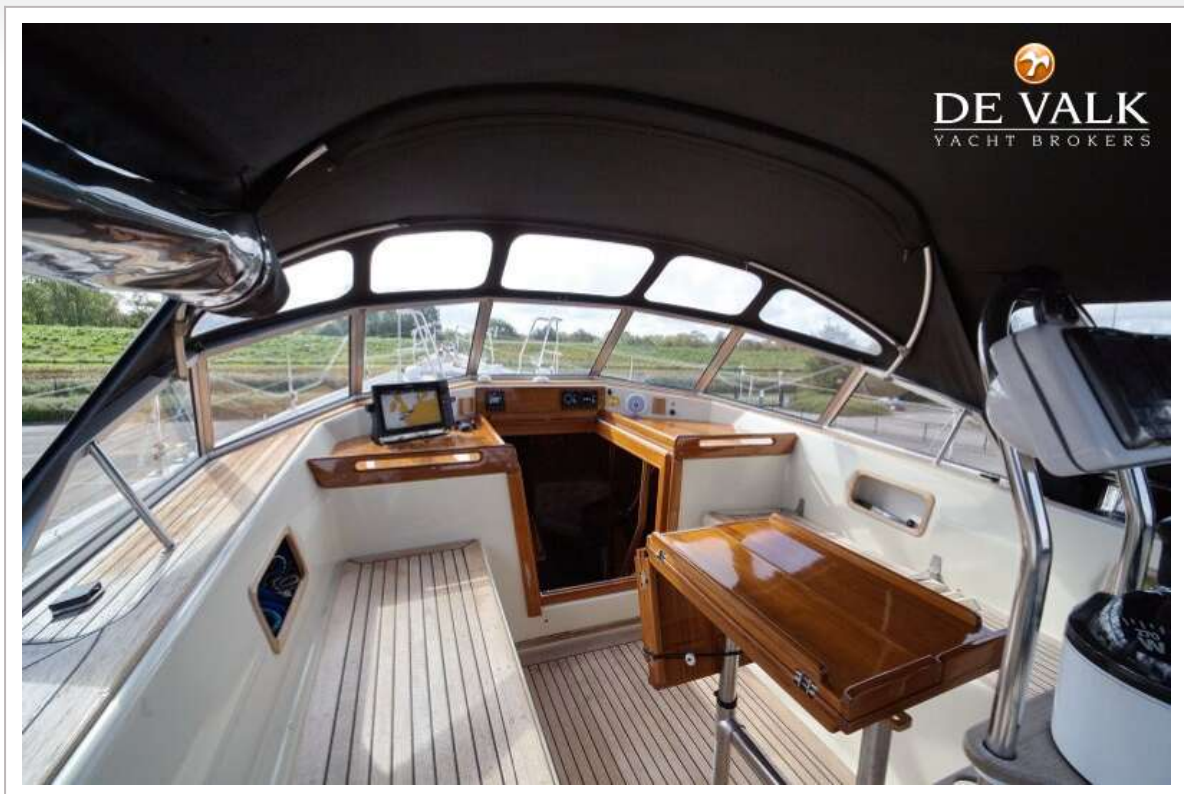
NAJAD 510



NAJAD 510



NAJAD 510



NAJAD 510



NAJAD 510



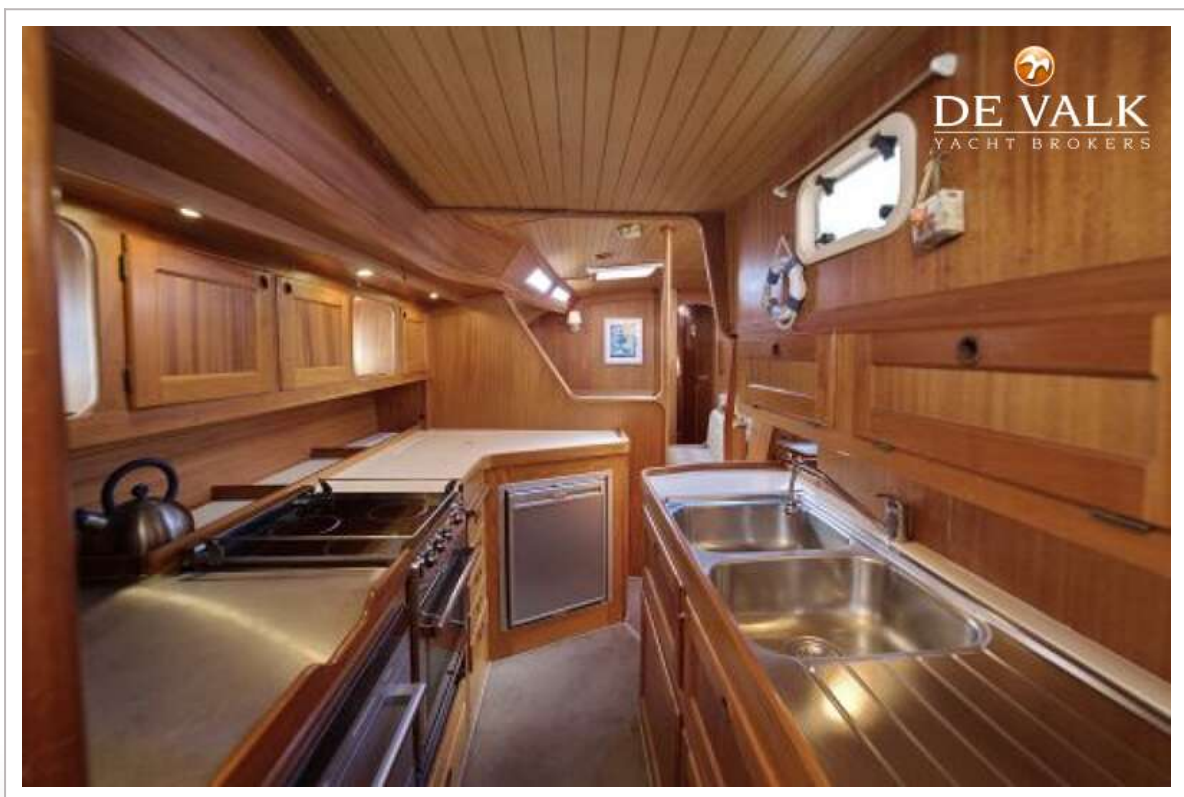
NAJAD 510



NAJAD 510



NAJAD 510



NAJAD 510



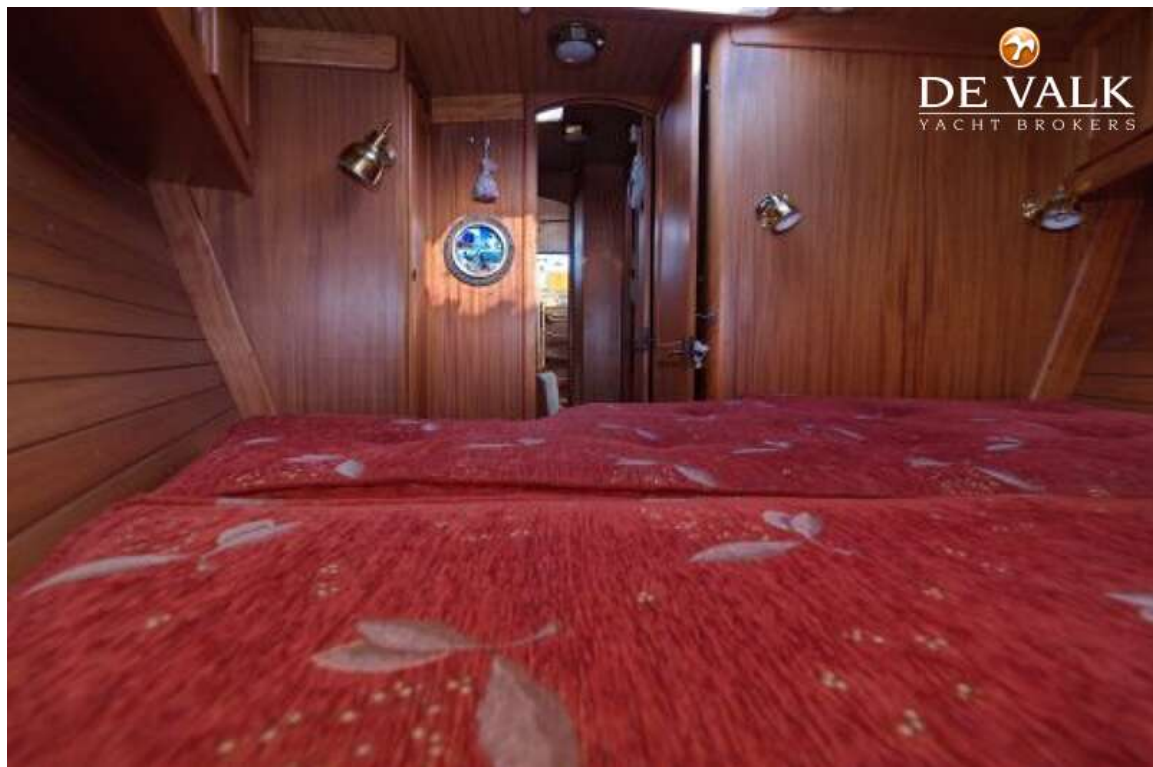
NAJAD 510



NAJAD 510



NAJAD 510





NAJAD 510

