



DE VALK
YACHT BROKERS



BENETEAU 423



DE VALK
YACHT BROKERS

BENETEAU 423

BROKER'S COMMENTS

A very popular Beneteau due to the excellent sailing qualities in a easy to handle size with a very comfortable living space below deck. This is a 3 cabin and 2 heads version with low engine hrs and in almost new condition with practically no signs of wear on the interior.

Reinoud Bicker Caarten

SPECIFICATIONS

Dimensions	13.09 x 3.90 x 2.10 (m)	Builder	Beneteau
Built	2006	Cabins	3
Material	GRP	Berths	6
Engine(s)	1 x Yanmar 4JH3 TE diesel	Hp/Kw	75.00 (hp), 55.20 (kw)
Asking price	€ 99.950 (VAT Paid)	Lying	contact Portugal

CONTACT

Sales office	De Valk Portugal	Telephone	+351 308 812321
Address	Edifício Administrativo - Ponta da Areia 8500 - 345 Portimão PT	E-mail	portugal@devalk.nl

DISCLAIMER

These particulars are given in good faith as supplied but cannot be guaranteed.



GENERAL

Model	BENETEAU 423
Type	sailing yacht
LOA (m)	13,09
Beam (m)	3,90
Draft (m)	2,10
Air draft (m)	17,00
Headroom (m)	1,95
Year built	2006
Builder	Beneteau
Country	France
Displacement (t)	8,8
Ballast (tonnes)	cast iron
CE norm	A
Hull material	GRP
Hull colour	blue
Hull shape	round-bilged
Keel type	fin keel with bulb
Superstructure material	GRP
Deck material	woodcore
Deck finish	non-skid moulded in
Superstructure deck finish	non-skid moulded in
Cockpit deck finish	teak
Dorades	2
Window frame	aluminium
Window material	perspex
Deckhatch	perspex 5x
Portholes	aluminium 6
Fuel tank (litre)	stainless steel 250L
Level indicator (fuel tank)	yes
Freshwater tank (litre)	polyethylene 1x400L 1x200L



Level indicator (freshwater)	yes
Blackwater tank (litre)	polyethylene
Blackwater tank extraction	deck extraction
Wheel steering	chain steering
Outside helm position	chain steering In cockpit
Emergency tiller	yes
More info on hull	A substantial structural inner moulding is bonded and laminated to the hull and spreads any loads guaranteeing reduced strain on the hull
More info on paintwork	Allgrip on top-side

ACCOMMODATION

Cabins	3
Berths	6
Interior	cherry
Layout	3 cabins with 3 heads
Floor	teak and holly
Headroom saloon (m)	2m
Heating	diesel ducted hot air Webasto
Chart table	yes
Aft Cabin	2x
Dinette	yes
Countertop	wood Veneer
Sink	stainless steel Double
Cooker	calor gas
Oven	2 burners, oven and grill ENO
Fridge	Fridgomat, new Sept.2025
Freezer	Icebox
Hot water system	220V + engine
Water pressure system	Manual and electrical
Manual and/or foot pump	yes
Kettle	yes



Hot water tap	yes
Crockery	yes
Owners cabin	French bed Forward cabin
Bed length (m)	2m
Wardrobe	hanging/drawers/shelves
Bathroom	en suite
Toilet	en suite
Toilet system	manual Jabsco
Wash basin	in the bathroom
Shower	en suite With screen off
Guest cabin 1	double bed
Bed length (m)	2m
Wardrobe	hanging/drawers/shelves
Bathroom	en suite
Toilet	en suite
Toilet system	manual Jabsco
Wash basin	in the bathroom
Shower	en suite
Guest cabin 2	double bed
Bed length (m)	2m
Wardrobe	hanging/drawers/shelves
Bathroom	en suite
Toilet	en suite
Toilet system	manual
Wash basin	in the bathroom
Shower	en suite

MACHINERY

No of engines	1
Make	Yanmar
Type	4JH3 TE



HP	75
kW	55.20
Fuel	diesel
Year installed	2005
Maximum speed (kn)	9
Cruising speed (kn)	6
Consumption (l/hr)	3
Range (nm)	500
Engine hours	1464
Drive	shaft
Saildrive seal	Volvo deep sea seal
Engine controls	bowden cable
Gearbox	mechanical
Engine controls	bowden cable
Bowthruster	hydraulic QL Bow thrusters
Gearbox	hydraulic
Exhaust	watercooled
Propeller type	folding
Propeller blades	3
Propeller shaft material	stainless steel
Shaft lubrication	water
Manual bilge pump	In cockpit
Electric bilge pump	yes
Start battery	110 Ah new 2021
Service battery	3x 105 Ah
Bowthruster battery	yes
Windlass battery	yes
Battery monitor	yes
Battery charger	Dolpen 40 Amp
Inverter	Victron new 2021
Diode battery combiners	yes
Shorepower	with cable



NAVIGATION

Compass	yes
Depth sounder	Raymarine ST 60
Depth sounder/log	Raymarine ST 60
Windset	Raymarine ST60
VHF	Dimrad DSC
Autopilot	Raymarine
Plotter	At wheel Garmin + 1x at chart table both new 2022
Electronic chart(s)	North EU, Ireland, UK, Med. south France to N. Africa and Med.
AIS transponder	yes
EPIRB	yes
Navigation lights	yes

EQUIPMENT

Sprayhood	yes
Dodger	yes
Bimini	yes
Cockpit cushions	yes
Cockpit table	yes
Bathing platform	yes
Boarding ladder	yes
Deck shower	yes
Anchor	Delta 20kg
Anchor chain	40m 10mm galvanised steel new 2025 plus 40m rope
Windlass	Lofrans electric
Dinghy	Plastimo 2,8m. new 2021
Sea railing	stainless steel
Grab rail (superstructure)	teak
Pushpit	yes
Pulpit	yes
Life raft	container 6 pax



Last life raft survey	2021
Horn	Manual
Fenders	yes
Mooring lines	yes
Spare parts	Fan belts, filters, bulbs, water impeller, bow thruster anodes,
Radio-cd player	JVC
Speakers in salon	yes
Speakers in cabin	yes
Clock - barometer	yes
Fire extinguisher	yes
Extra info	Olympic Genoa. These items are currently not on board and will be shipped to the boat if the boat is sold. Separate beige saloon seat covers. Varnished Teak companionway
Extra info	The boat was layed up in the boatyard for 2 months in 2025 where it was antifouled, cleaned and polished with all anodes changed and any minor repairs completed. The boat was relaunched in Sept. 2025. The boat marina berth in Albufeira is paid until mid June 2026

RIGGING

Rigging	sloop
Standing rigging	wire New 2017
Brand mast	Z-Spar
Material mast	aluminium
Spreaders	yes
Mainsail	Dacron fully battened, double tafita and battcars
Mainsail cover	Lazy bag
Battcars	yes
Fully battened mainsail	yes
Jib I	dacron double sided tafita excellenct condition 2017 Olympic
Jib II	105% UK sails, Dacron
Jib III	Dacron headsail
Genoa furler	yes



Spinnaker

Reefing System

Backstay adjuster

Boomvang

Genoa sheetwinches

Halyard winches

Tri radial

slabreefing

mechanical

mechanical

2x Harken 48 2speed

1x electric 2x Harken 40



BENETEAU 423



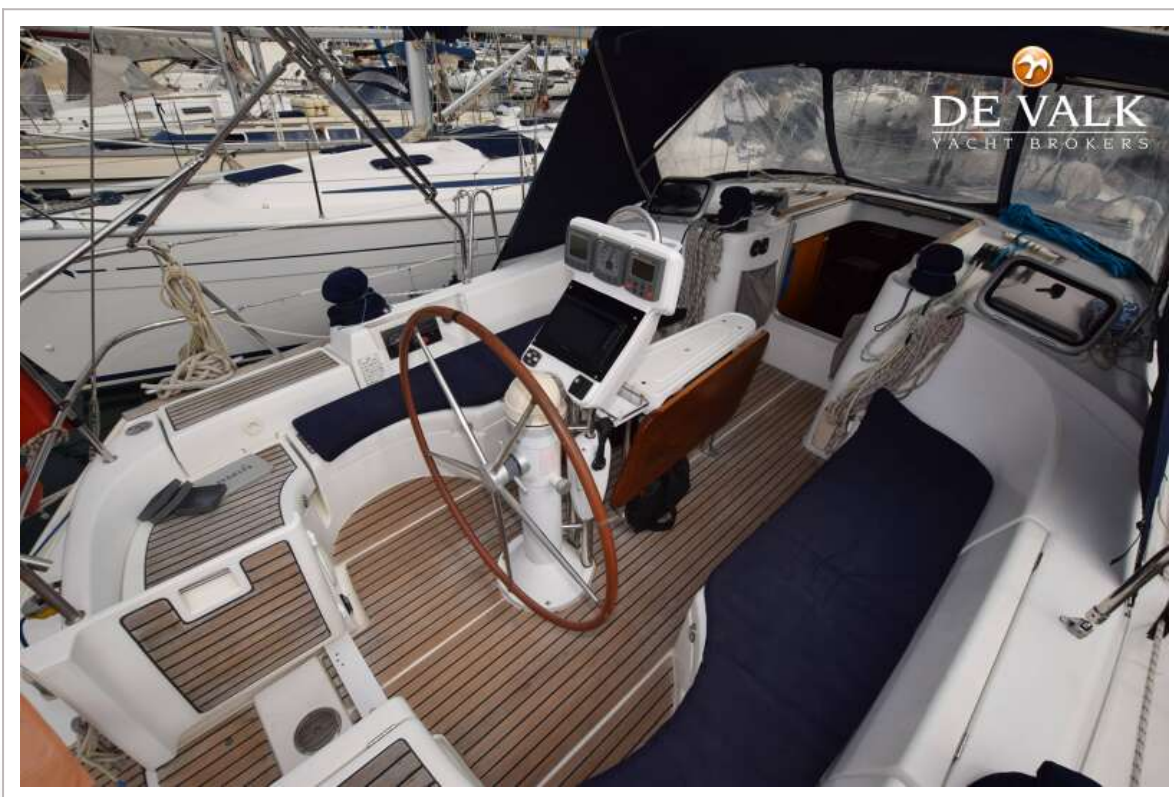
BENETEAU 423



BENETEAU 423



BENETEAU 423



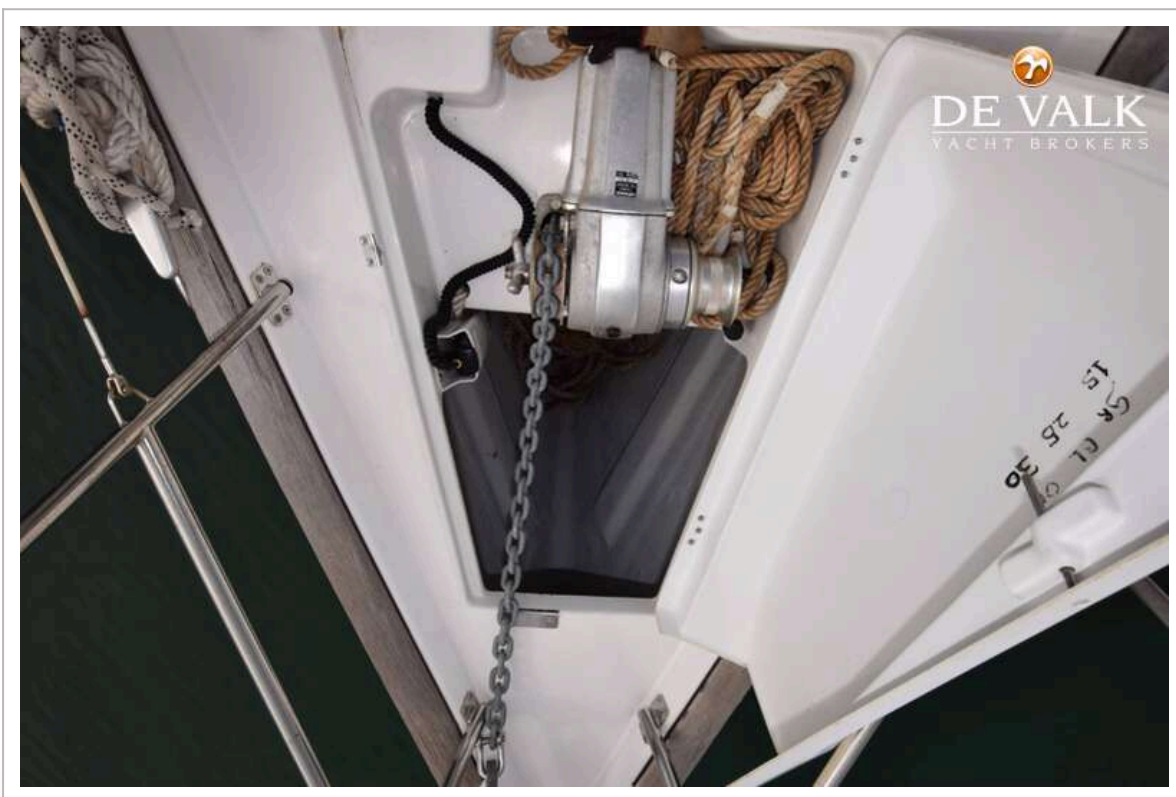
BENETEAU 423



BENETEAU 423



BENETEAU 423



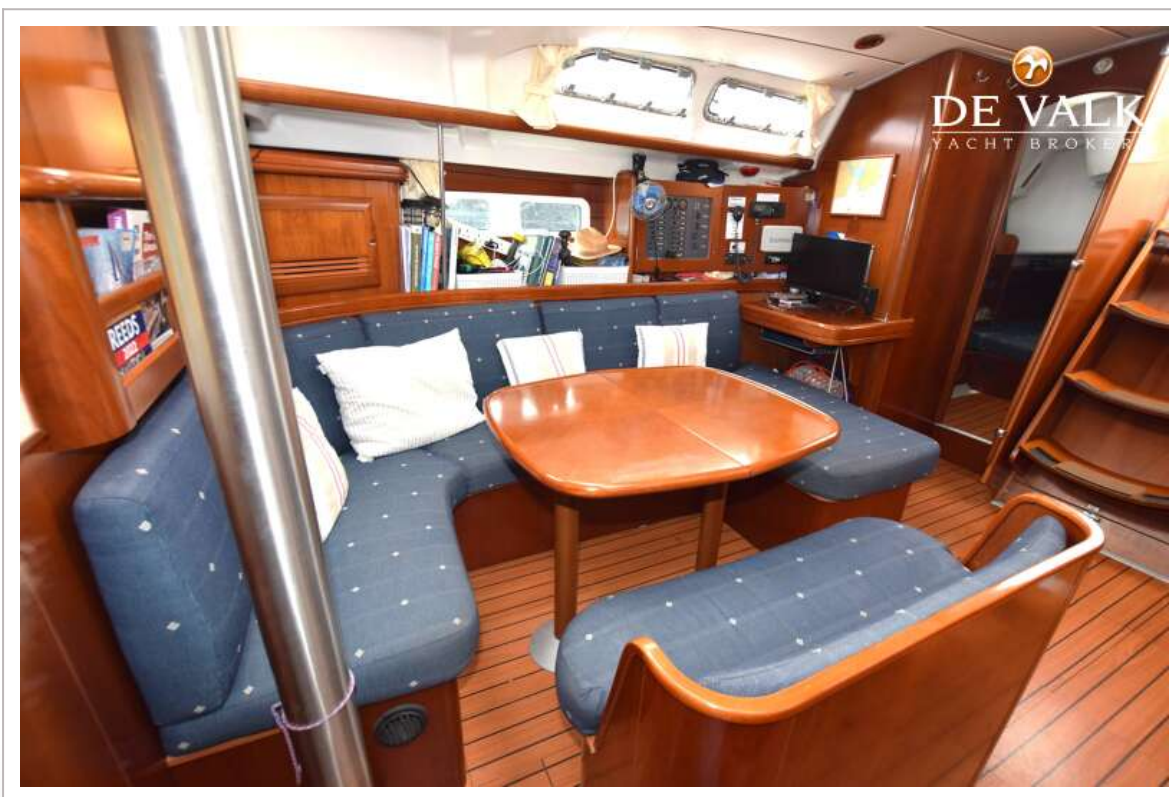
BENETEAU 423



BENETEAU 423



BENETEAU 423



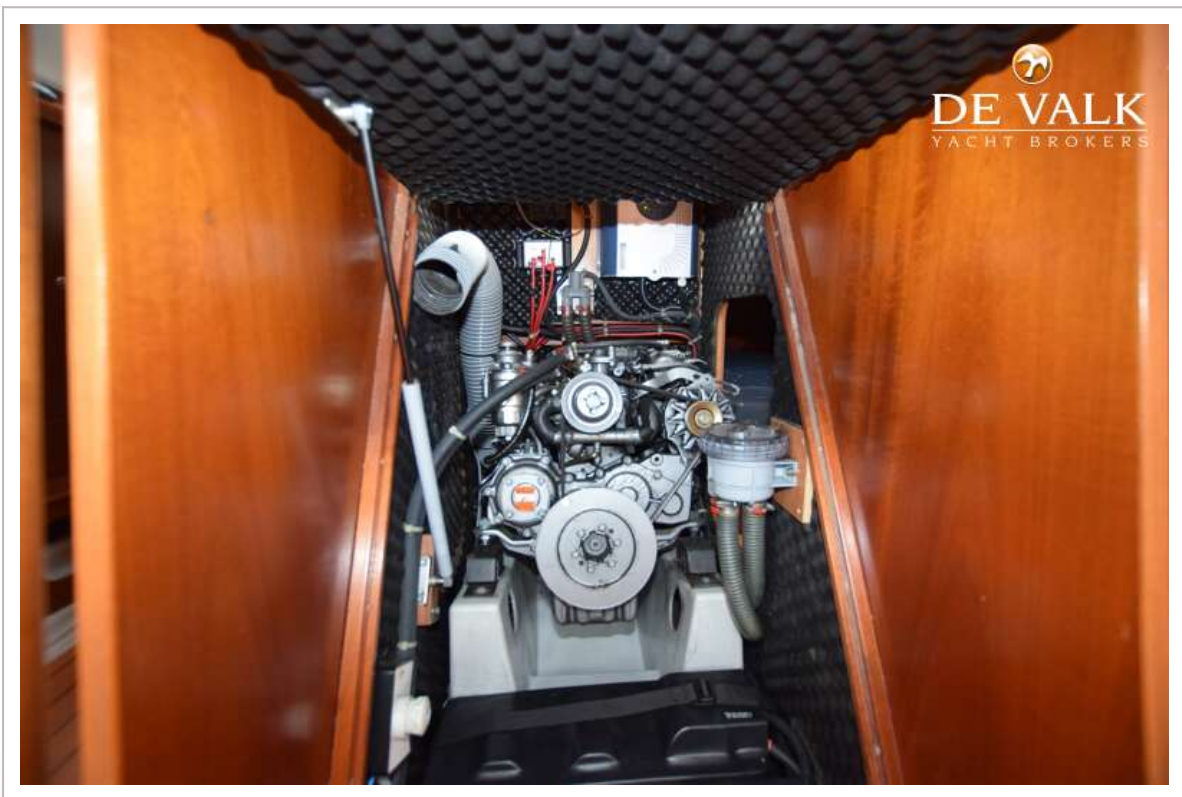
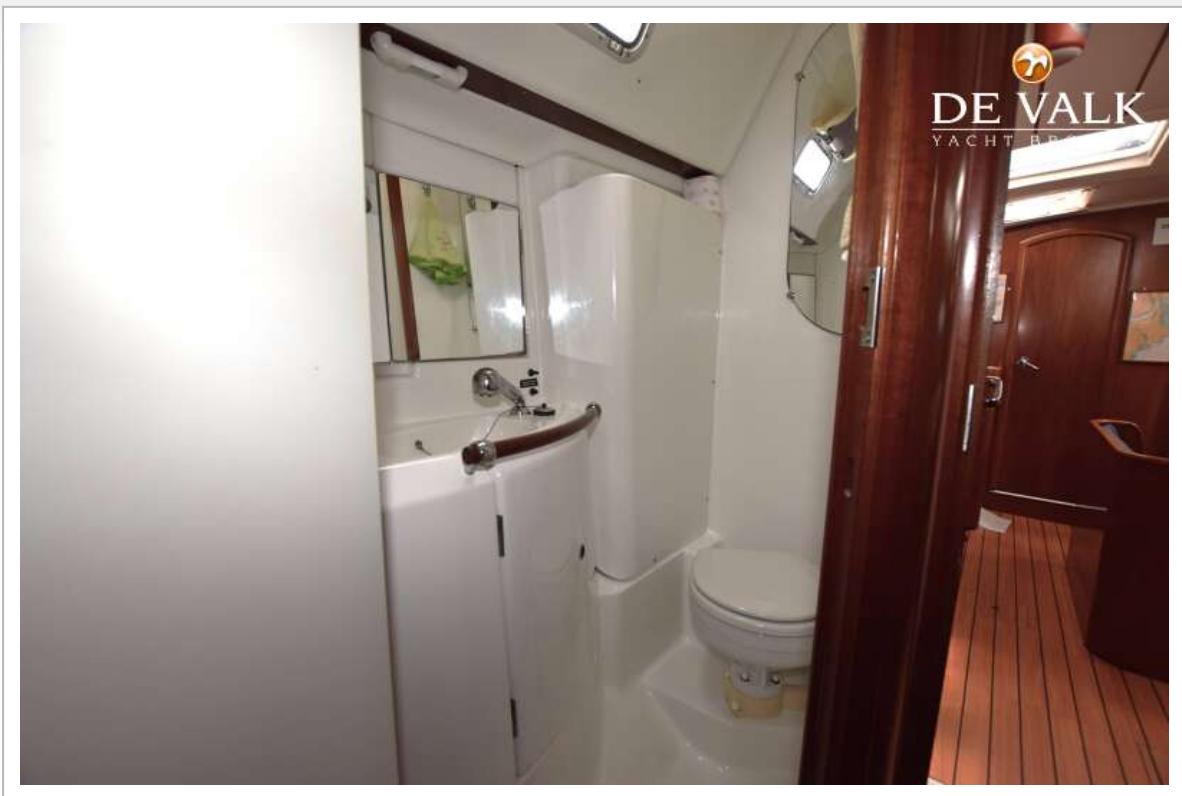
BENETEAU 423



BENETEAU 423

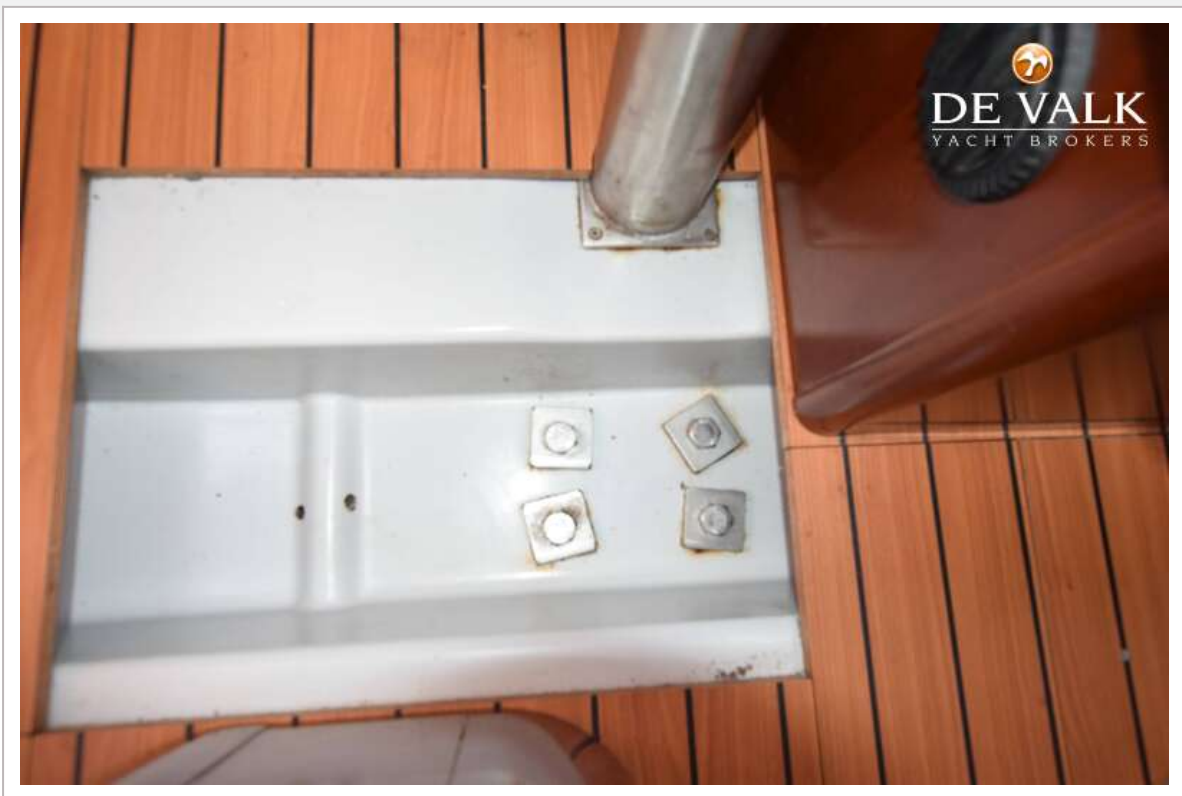


BENETEAU 423

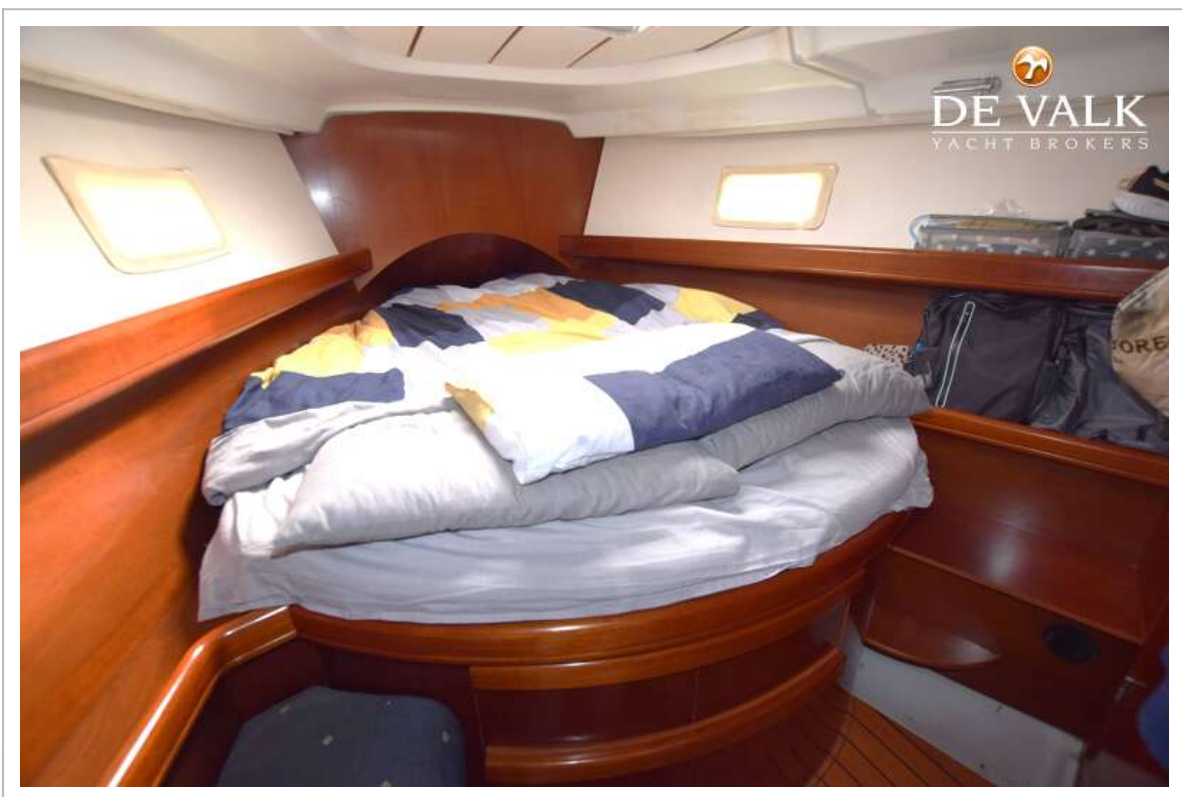
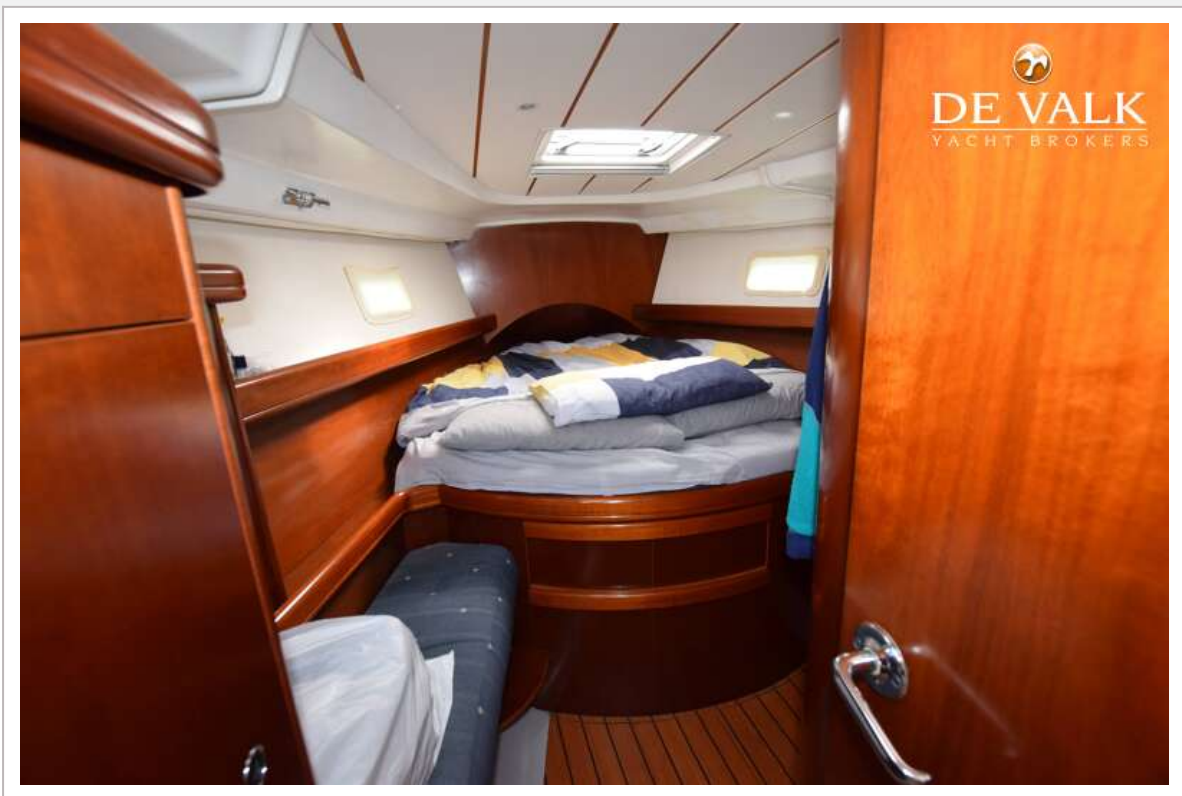


BENETEAU 423





BENETEAU 423



BENETEAU 423

