



ENDURANCE 44

ENDURANCE 44

BROKER'S COMMENTS

This solid and very well build steel hull Endurance 44, designed by Peter Ibold, has a comfortable cockpit and a spacious forward deck. You will find the accommodation area open and light and well equipped. The yacht has been well maintained by her experienced owner, the electrical system has been renewed onboard and the hull sanded and painted in 2023. The new watermaker, solar panels & lithium batteries give her full autonomy. Everything is operative for a safe passage.

Reinoud Bicker Caarten

SPECIFICATIONS

| | | | |
|---------------------|-------------------------|----------------|-------------------------------|
| Dimensions | 13.40 x 4.00 x 2.10 (m) | Builder | Chantier de la Grande Bruyere |
| Built | 1978 | Cabins | 2 |
| Material | Steel | Berths | 6 |
| Engine(s) | x Perkins 4236 diesel | Hp/Kw | 82.00 (hp), 60.27 (kw) |
| Asking price | € 95.000 (VAT Exempt) | Lying | contact sales office |

CONTACT

| | | | |
|---------------------|---|------------------|--------------------|
| Sales office | De Valk Portugal | Telephone | +351 308 812321 |
| Address | Edifício Administrativo - Ponta da Areia 8500 - 345 Portimão PT | E-mail | portugal@devalk.nl |

DISCLAIMER

These particulars are given in good faith as supplied but cannot be guaranteed.



ENDURANCE 44

GENERAL

| | |
|--------------------------------|--|
| Model | ENDURANCE 44 |
| Type | sailing yacht |
| LOA (m) | 13,40 |
| Beam (m) | 4,00 |
| Draft (m) | 2,10 |
| Year built | 1978 |
| Builder | Chantier de la Grande Bruyere |
| Country | France |
| Designer | Peter Ibold |
| Displacement (t) | 13 |
| Hull material | steel |
| Hull colour | off-white Sanded and painted 2023 |
| Deck finish | non-skid paint Sanded in 2023 |
| Antifouling (year) | 2021 |
| Fuel tank (litre) | stainless steel 2X 500L - cleaned in 2021 |
| Freshwater tank (litre) | 800 L Cleaned in 2021 |
| Greywater tank (litre) | 170 L |
| More info on hull | Sandblasted and epoxy system treatment with Hempel in 2018 |
| Extra info | All water pipes changed in 2021 |
| Extra info | New fittings in galley and heads in 2021 |
| Extra info | Total hull refit with new steel skin and foam insulation in 2012 |

ACCOMMODATION

| | |
|--------------------------|---|
| Cabins | 2 |
| Berths | 6 |
| Floor | yes |
| Heating | Planar 4 KWdiesel |
| Navigation center | Yes |
| Galley | Replacement dishes, pans with high quality products in 2021 |
| Cooker | calor gas Eno One |



ENDURANCE 44

| | |
|------------------------------|---|
| Fridge | New 2024 |
| Hot water system | 220V/engine/heating Quick |
| Water pressure system | electrical |
| Owners cabin | double bed |
| Wardrobe | yes |
| Bathroom | shared |
| Toilet | shared Electric |
| Guest cabin 1 | French bed |
| Wardrobe | hanging and drawers |
| Bathroom | shared |
| Extra info | An additional single berth in the salon |
| Extra info | All behind wooden structures new 2012 |

MACHINERY

| | |
|-------------------------|--|
| Make | Perkins |
| Type | 4236 |
| HP | 82 |
| kW | 60.27 |
| Fuel | diesel |
| Bowthruster | electric 6 KW |
| Propeller type | feathering |
| Propeller blades | 3 |
| Generator | Parkside external/portable |
| Start battery | 1 X 110 Ah (2016) |
| Service battery | 4 Lithium total 560Ah (2023) |
| Battery charger | Victron Energy |
| Wind generator | not installed "Silent wind" 400W (12V) |
| Solar panel | 450W peak |
| Shorepower | with cable 220V |
| Watermaker | AQUA TEC 55L/hr new 2024 |



NAVIGATION

| | |
|-------------------|---|
| Compass | Yes |
| Windset | Raymarine ST60 |
| VHF | Raymarine 49E grau Clipper Navtex |
| VHF handheld | Icom DSC IC-M93D |
| Autopilot | Raymarine smart Pilot ST6002 Raypilot TYP2 12V Linear drive |
| Radar | Raymarine RD418 Digital |
| Plotter | Aixom 9 |
| Plotter/GPS | Raymarine C90W |
| Radar/GPS/plotter | Raymarine ST60 tri-data |
| AIS receiver | Raymarine AIS 700 |
| Navigation lights | LED |

EQUIPMENT

| | |
|-------------------|--|
| Cockpit table | yes |
| Anchor | 42 kg Bugelanker |
| Anchor chain | 100 x 10mm galvanized |
| Dinghy | inflatable YAM new 2023 |
| Outboard | Mariner 8HP |
| Outboard support | yes |
| Davits | stainless steel Available, not installed |
| Fenders | 11x |
| Radio-cd player | Sony |
| Fire extinguisher | 2 x 2 L + 1 x 4 L |

RIGGING

| | |
|------------------|----------------|
| Rigging | ketch |
| Standing rigging | wire |
| Mainsail | 37.5 M2 (2013) |
| Mizzen | 13.5 M2 (2013) |



ENDURANCE 44

| | |
|--------------------------------|--|
| Jib | Storm jib 13.8 M2 (2013) |
| Genoa | Roller furling 60.5 M2 (2013) |
| Multifunctional winches | Lewmar 4 x 30 + 1 x 60 + 1 x 30 |
| Extra info | Barlow Australia 1 x 23 Barient USA 1 x 10 |



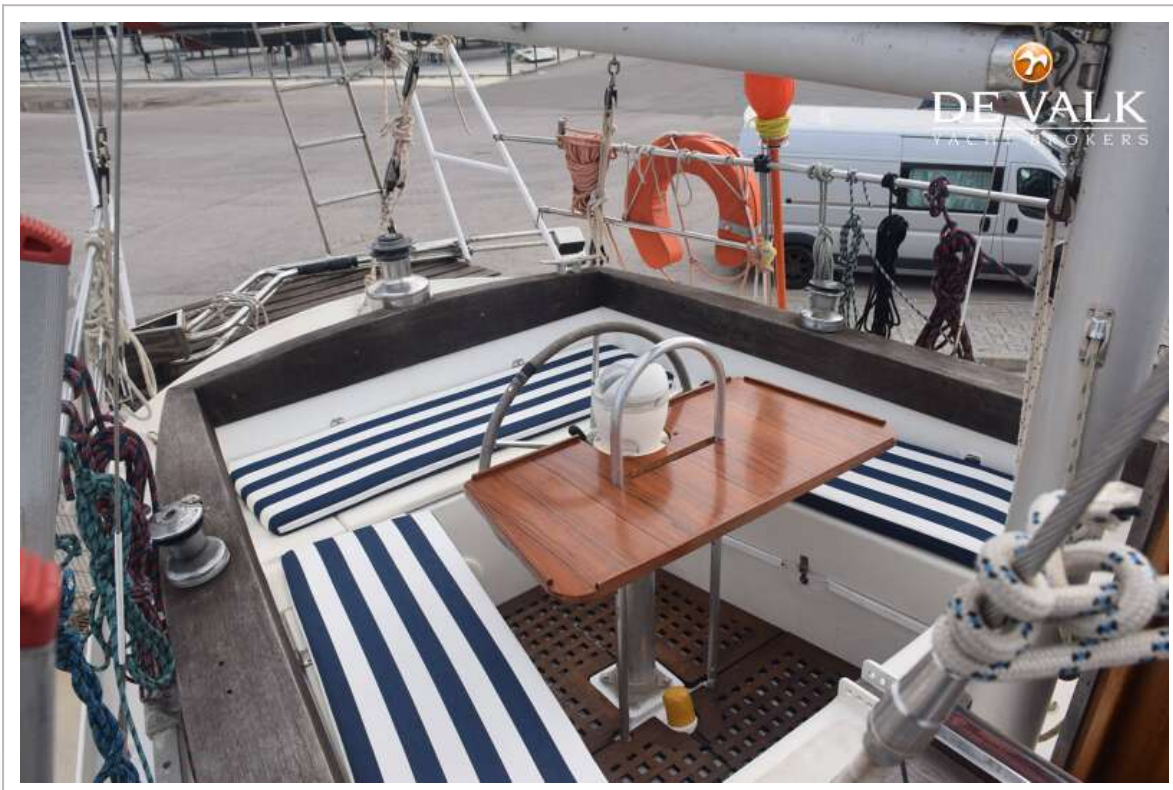
ENDURANCE 44



ENDURANCE 44



ENDURANCE 44



ENDURANCE 44



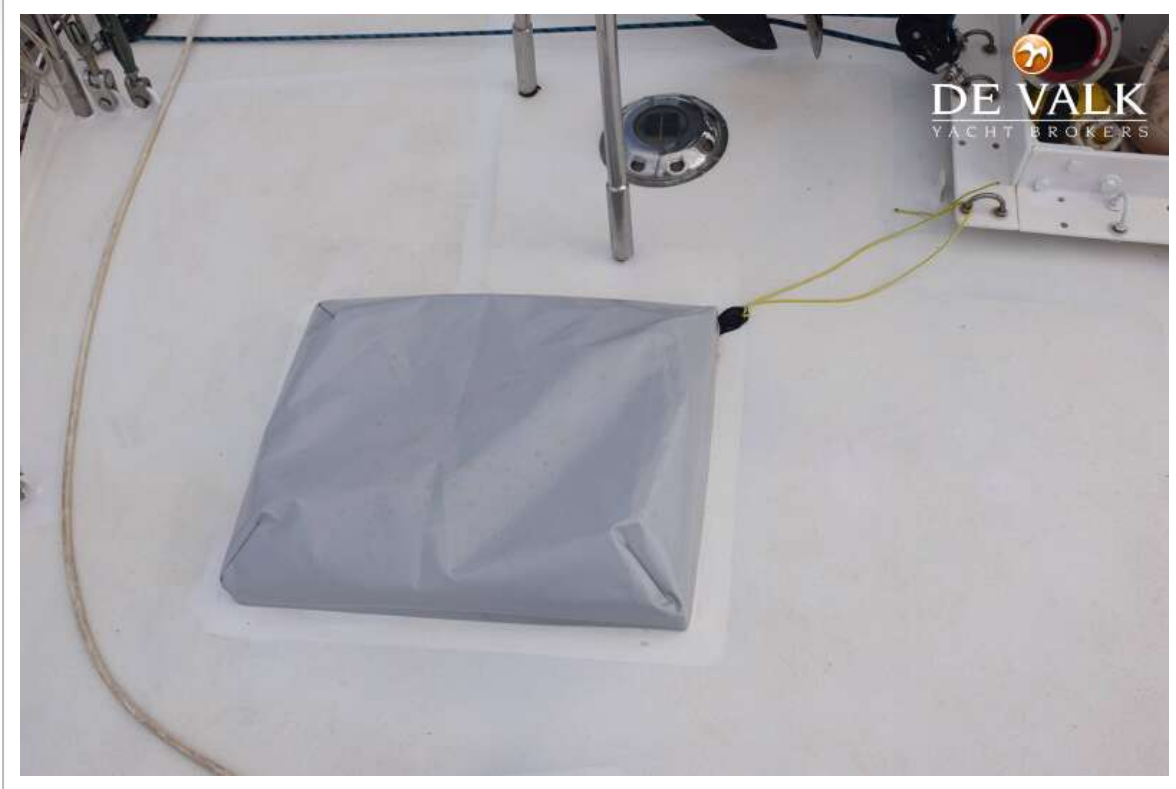


ENDURANCE 44

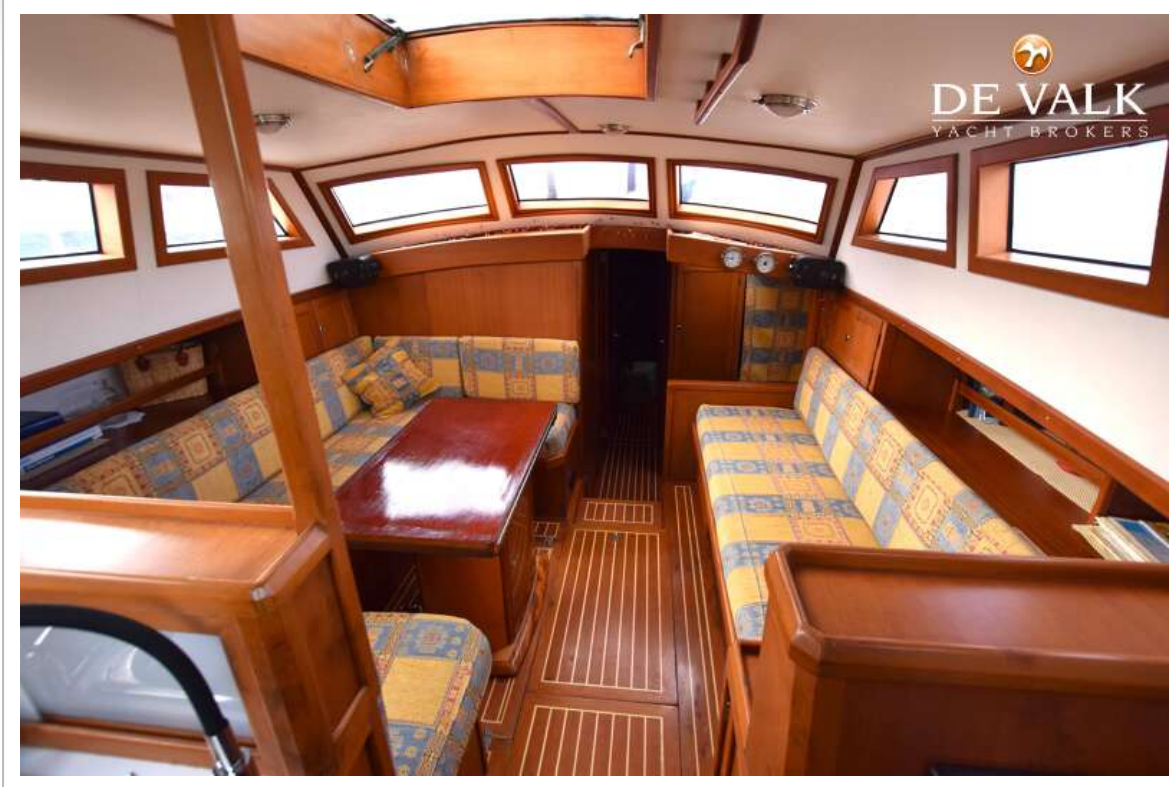


ENDURANCE 44





ENDURANCE 44



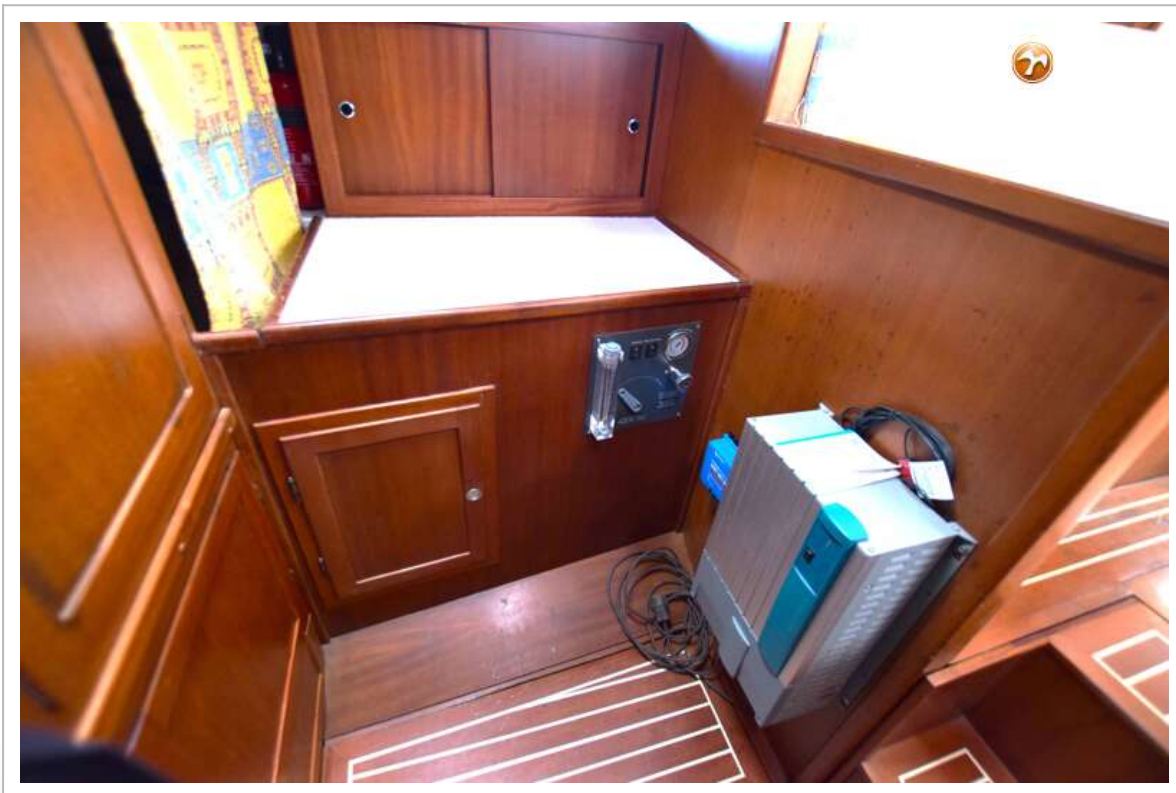
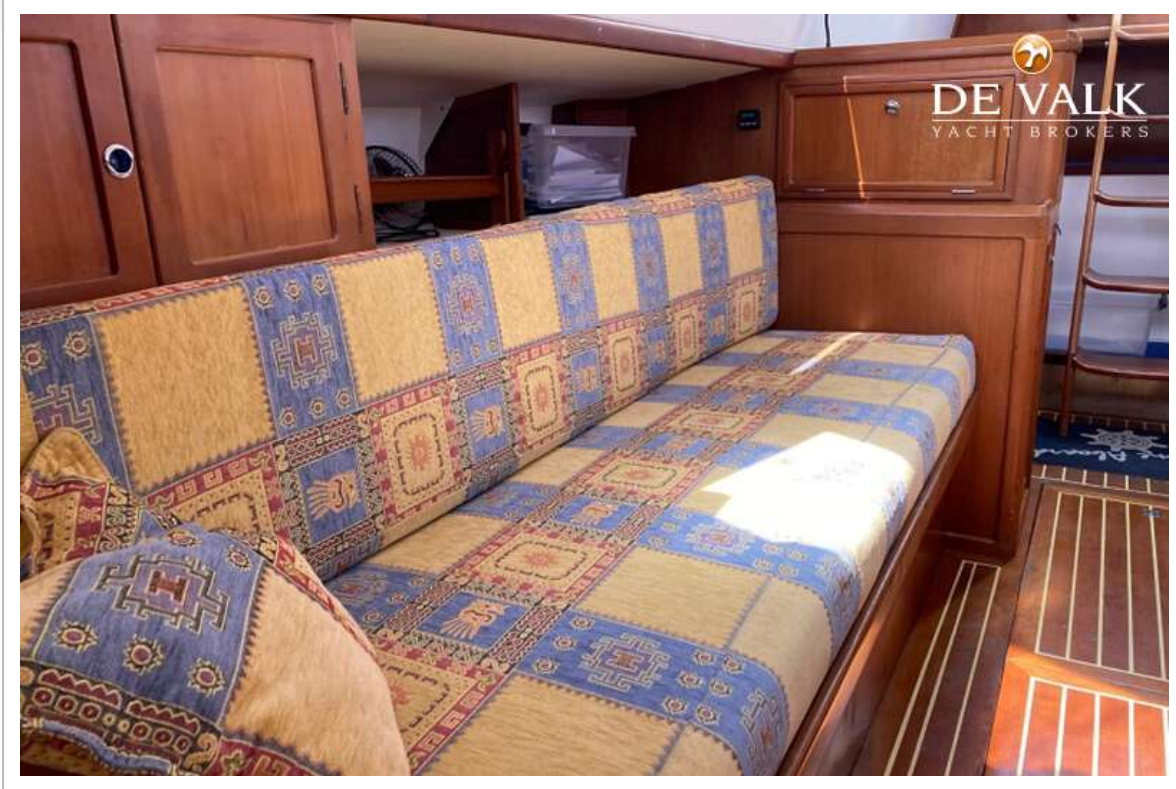
ENDURANCE 44



ENDURANCE 44



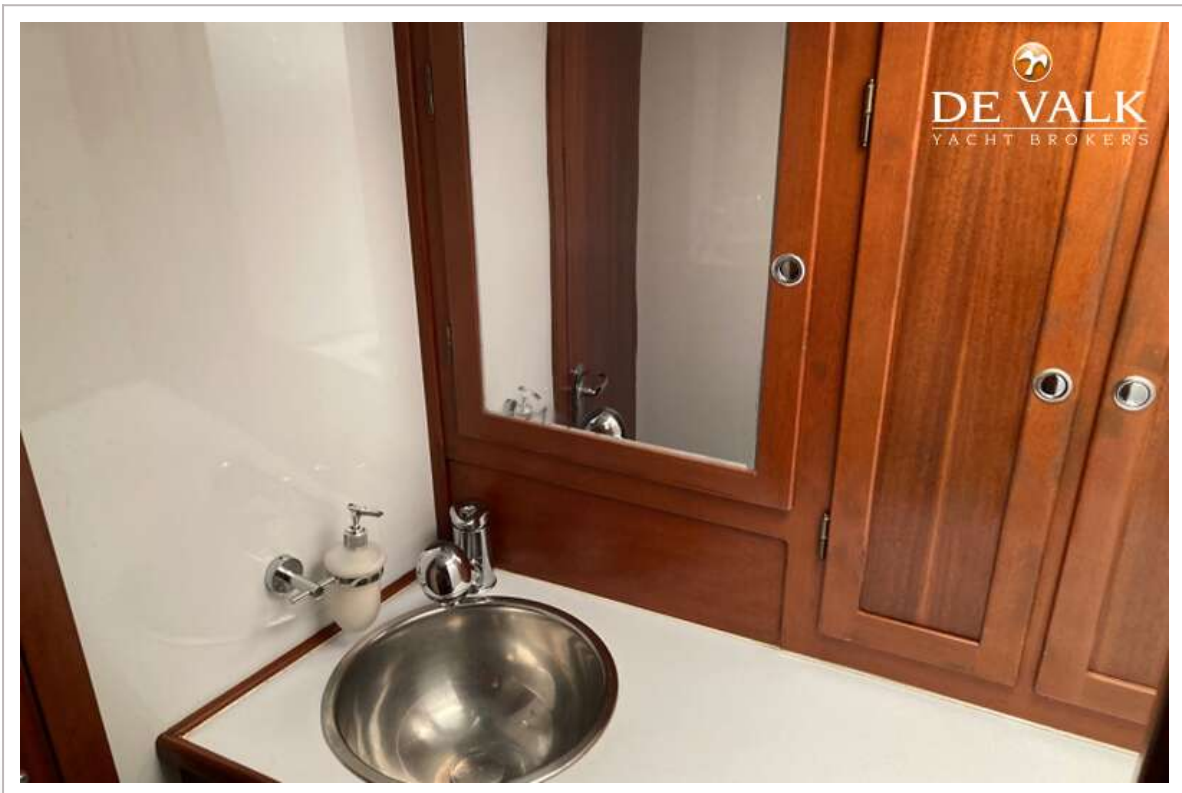
ENDURANCE 44



ENDURANCE 44



ENDURANCE 44



ENDURANCE 44

