



DE VALK  
YACHT BROKERS



PUNCH 1500 LC



DE VALK  
YACHT BROKERS

# PUNCH 1 500 LC

## BROKER'S COMMENTS

A well proven bluewater catamaran, extensively upgraded and ready to sail, Shambala is built by Multicap Caraïbes to the highly regarded Mortain & Mavrikios design. Constructed in epoxy laminated marine plywood, she offers excellent structural integrity. Built in 2002 and held by only her second owner since 2016, she has benefited from two major refits completed in 2018 and again in 2024/25. Please contact our yacht broker for more details and information. Asking Euro 330,000 (VAT Paid). Offers are invited.

*Maarten de Kroon*

## SPECIFICATIONS

<b>Dimensions</b>	14.90 x 8.10 x 1.40 (m)	<b>Builder</b>	Multicap Caraibes, Martinique
<b>Built</b>	2002	<b>Cabins</b>	4
<b>Material</b>	Wood Epoxy	<b>Berths</b>	8
<b>Engine(s)</b>	2 x Volvo Penta D2-55 diesel	<b>Hp/Kw</b>	2 x 110.00 (hp), 80.96 (kw)
<b>Asking price</b>	€ 330.000 (VAT Paid)	<b>Lying</b>	Thailand

## CONTACT

<b>Sales office</b>	De Valk Asia	<b>Telephone</b>	+65 826 679 95
<b>Address</b>		<b>E-mail</b>	asia@devalk.nl
	AS		

## DISCLAIMER

These particulars are given in good faith as supplied but cannot be guaranteed.



# PUNCH 1500 LC

## GENERAL

<b>Model</b>	PUNCH 1500 LC
<b>Type</b>	catamaran sailing yacht
<b>LOA (m)</b>	14,90
<b>Beam (m)</b>	8,10
<b>Draft (m)</b>	1,40
<b>Year built</b>	2002
<b>Builder</b>	Multicap Caraibes, Martinique
<b>Country</b>	France
<b>Designer</b>	Mortain - Mavrikios
<b>Displacement (t)</b>	15
<b>CE norm</b>	A
<b>Hull material</b>	wood epoxy
<b>Hull colour</b>	beige
<b>Keel type</b>	fin keel
<b>Superstructure material</b>	woodcore
<b>Deck material</b>	woodcore
<b>Antifouling (year)</b>	2024
<b>Window frame</b>	aluminium
<b>Window material</b>	tempered glass
<b>Deckhatch</b>	yes
<b>Fuel tank (litre)</b>	polyethylene 150
<b>Fuel tank 2 (litre)</b>	polyethylene 150
<b>Level indicator (fuel tank)</b>	yes
<b>Freshwater tank (litre)</b>	polyethylene 2x 300
<b>Level indicator (freshwater)</b>	yes
<b>Blackwater tank (litre)</b>	2x 105
<b>Blackwater tank extraction</b>	yes
<b>Wheel steering</b>	cable steering
<b>Outside helm position</b>	yes
<b>Emergency tiller</b>	yes



# PUNCH 1500 LC

More info on hull	Epoxy laminated plywood
Extra info	Trampolines 2025

## ACCOMMODATION

Cabins	4
Berths	8
Floor	wood
Saloon	yes
Headroom saloon (m)	2
Air-conditioning	Domestic 220v
Navigation center	yes
Chart table	yes
Dinette	yes
Sliding door to cockpit	yes
Galley	yes
Countertop	corian
Sink	stainless steel Double
Cooker	calor gas Eno 3 burner
Oven	Eno
Gas alarm	yes
Microwave	yes
Fridge	2x 12v
Hot water system	by engine 45 l
Water pressure system	electrical
Kettle	yes
Coffee maker	yes
Crockery	For 8 persons
Owners cabin	double bed 160 x 180
Wardrobe	hanging and shelves
Bathroom	en suite
Toilet	en suite



# PUNCH 1500 LC

Toilet system	electric
Wash basin	in the bathroom
Shower	en suite
Guest cabin 1	double bed 160 x 200
Wardrobe	hanging and shelves
Bathroom	en suite
Toilet	en suite
Toilet system	electric
Wash basin	in the bathroom
Shower	en suite
Guest cabin 2	double bed 140 x 180
Wardrobe	hanging and shelves
Bathroom	shared
Toilet	shared
Toilet system	electric
Wash basin	in the bathroom
Shower	shared
Guest cabin 3	double bed 140 x 200
Wardrobe	hanging and shelves
Bathroom	shared
Toilet	shared
Toilet system	electric
Wash basin	in the bathroom
Shower	shared

## MACHINERY

No of engines	2
Make	Volvo Penta
Type	D2-55
HP	110
kW	80.96



# PUNCH 1500 LC

Fuel	diesel
Year installed	2002
Maximum speed (kn)	12
Cruising speed (kn)	9
Consumption (l/hr)	7
Range (nm)	400
Engine hours	???
Drive	sail-drive
Propeller type	folding 2018
Propeller blades	3
Manual bilge pump	yes
Electric bilge pump	yes
Bilge alarm	yes
Generator	Fisher Panda 5000i
Running hours generator	406
Start battery	2 x 2024
Service battery	2018, 3x 200A Lithium
Battery monitor	yes
Battery charger	2019 Mastervolt 100A
Inverter	2019, Cotek SP-1000
Solar panel	2019, 2x 240W
Shorepower	with cable
Watermaker	Aquabase 60l/h, 12v
Extra info	2x extra alternators 12v/60A

## NAVIGATION

Compass	yes
Depth sounder	2018
Log	2018
Windset	2019
Repeater	2019, at helm



# PUNCH 1500 LC

VHF	2022 Uniden
VHF handheld	2022 Icom
Radar	2022 Furuno Mod 1815
Plotter/GPS	2018 Furuno GP-32
AIS transponder	2019, Camino AIS B with splitter
EPIRB	2024, NEB-20000
Navigation lights	2018, Aqua Signal LED

## EQUIPMENT

Sun awning	2022
Cockpit cushions	yes
Cockpit table	yes
Cockpit chairs	yes
Deck shower	yes
Anchor	Spade 35kg
Anchor chain	65m, 12mm
Anchor 2	Fortress FX 37
Anchor chain	10m + line
Windlass	electrical Lofrans Tigre 12v 1200W
Capstan	yes
Dinghy	rigid hull 2025, Allstar SR 290 Hypalon, alu hull
Outboard	2021, Yamaha 9.9hp, 4 stroke
Outboard support	yes
Davits	yes
Sea railing	wire
Life raft	Arimar pack B
Life raft (pers)	8
Last life raft survey	Up to date
Lifejackets	8x inflatable
Lifebuoy	2x
Safety lines on deck	Dyneema



# PUNCH 1500 LC

<b>Fenders</b>	6x
<b>Mooring lines</b>	2018, 18mm 2x 10m, 2x 15m
<b>Spare parts</b>	yes
<b>Tools</b>	yes
<b>Radio-cd player</b>	yes
<b>Cockpit speakers</b>	yes
<b>Speakers in salon</b>	yes
<b>Fire extinguisher</b>	5x ABC
<b>Latest extinguisher survey</b>	Up to date
<b>Extra info</b>	2 pax inflatable kayak
<b>Extra info</b>	Snorkelling gear

## RIGGING

<b>Rigging</b>	fractional
<b>Standing rigging</b>	wire 2018
<b>Brand mast</b>	Sparcraft 2018
<b>Material mast</b>	aluminium
<b>Spreaders</b>	2 pairs
<b>Mainsail</b>	2018 spectra carbon
<b>Mainsail cover</b>	2020 lazy bag
<b>Battcars</b>	yes
<b>Fully battened mainsail</b>	yes
<b>Genoa</b>	Dacron, old
<b>Genoa furler</b>	Profurl N52-S
<b>Gennaker</b>	2020, on Facnor furler FX 4500
<b>A-symmetric spi</b>	2002
<b>Reefing System</b>	slabreefing
<b>Primary sheet winch</b>	5x Anderson 46 ST
<b>Secondary sheet winch</b>	2x Anderson 52 ST
<b>Gennaker pole</b>	2018



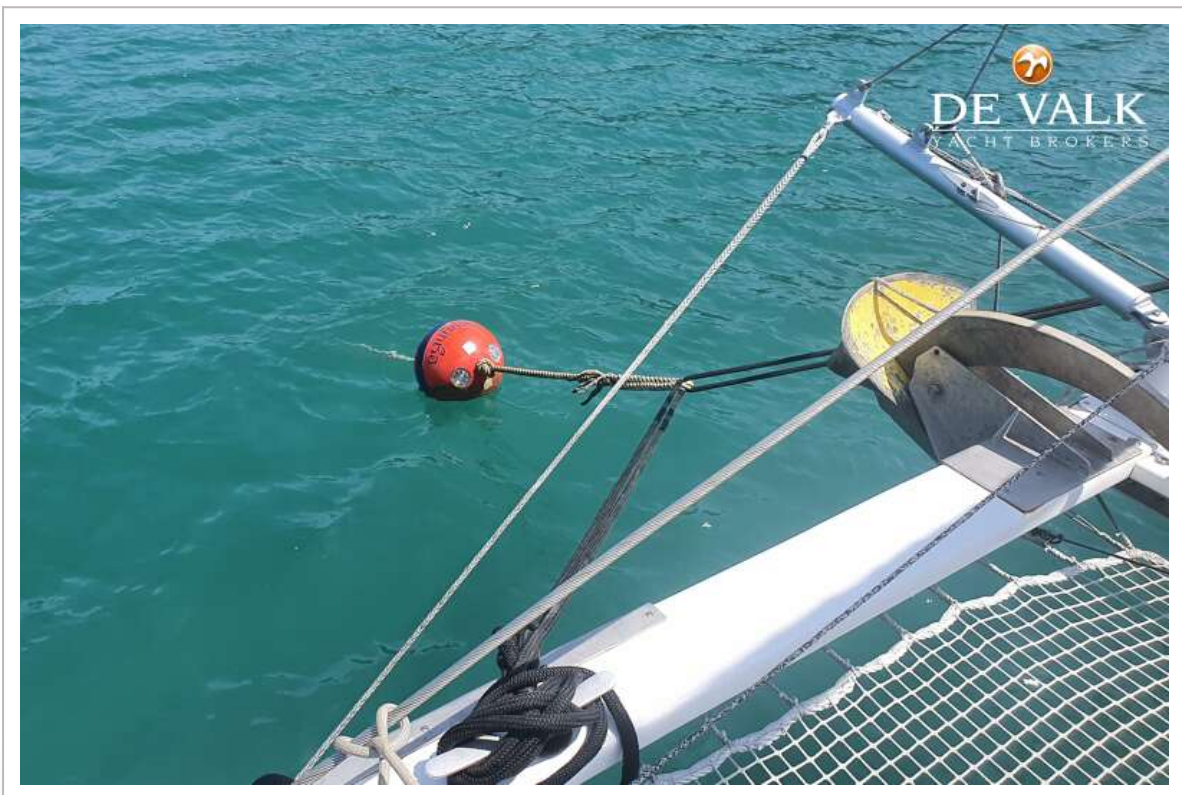
# PUNCH 1500 LC



# PUNCH 1500 LC



# PUNCH 1500 LC



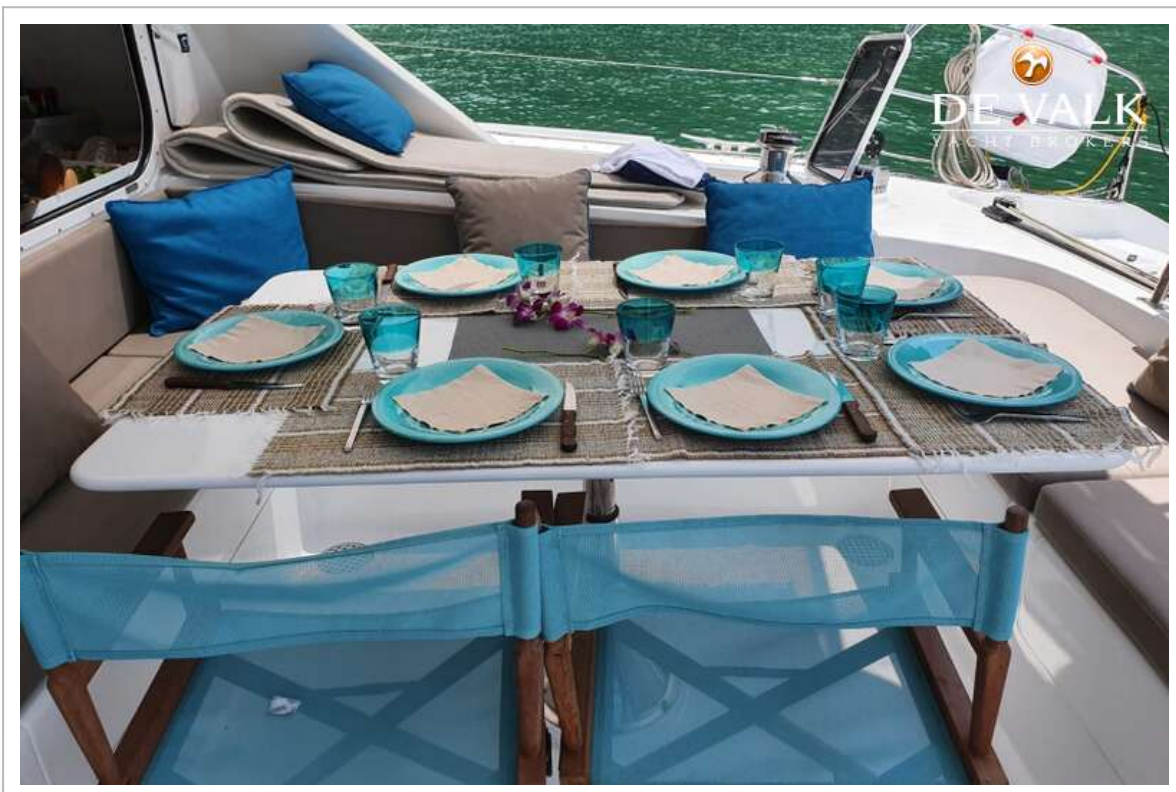
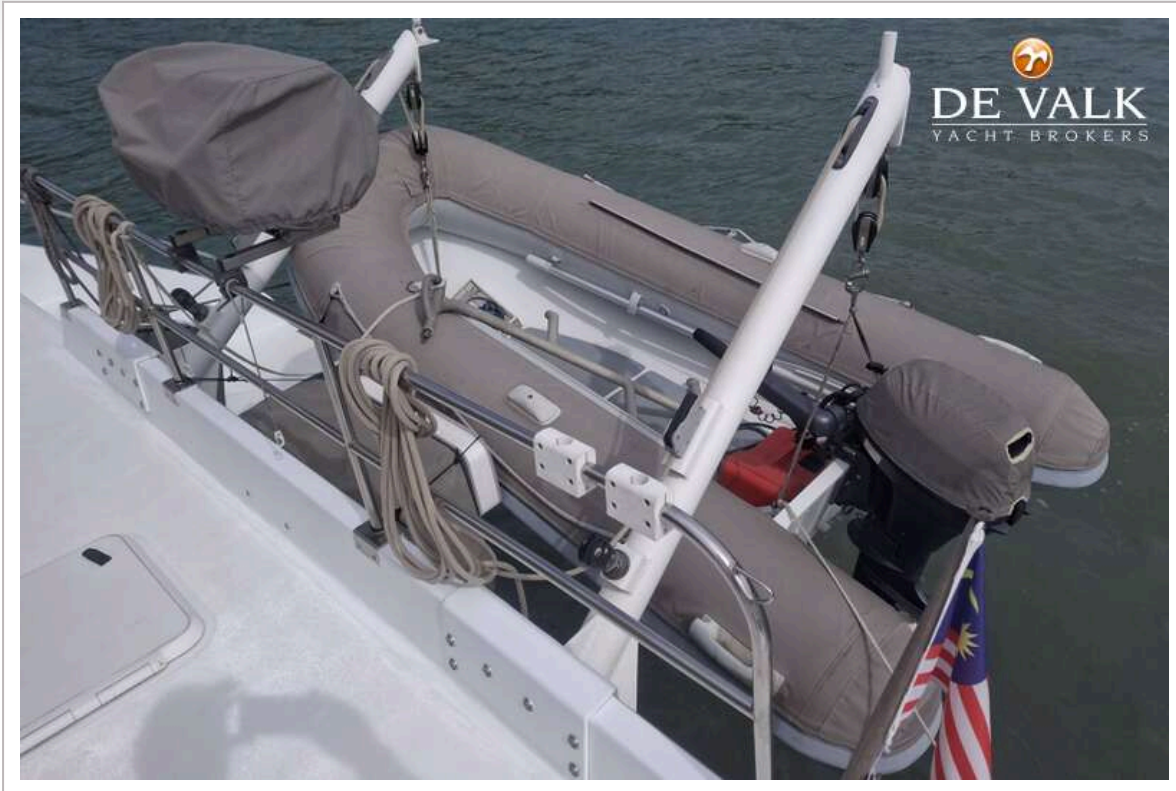
# PUNCH 1500 LC



# PUNCH 1500 LC



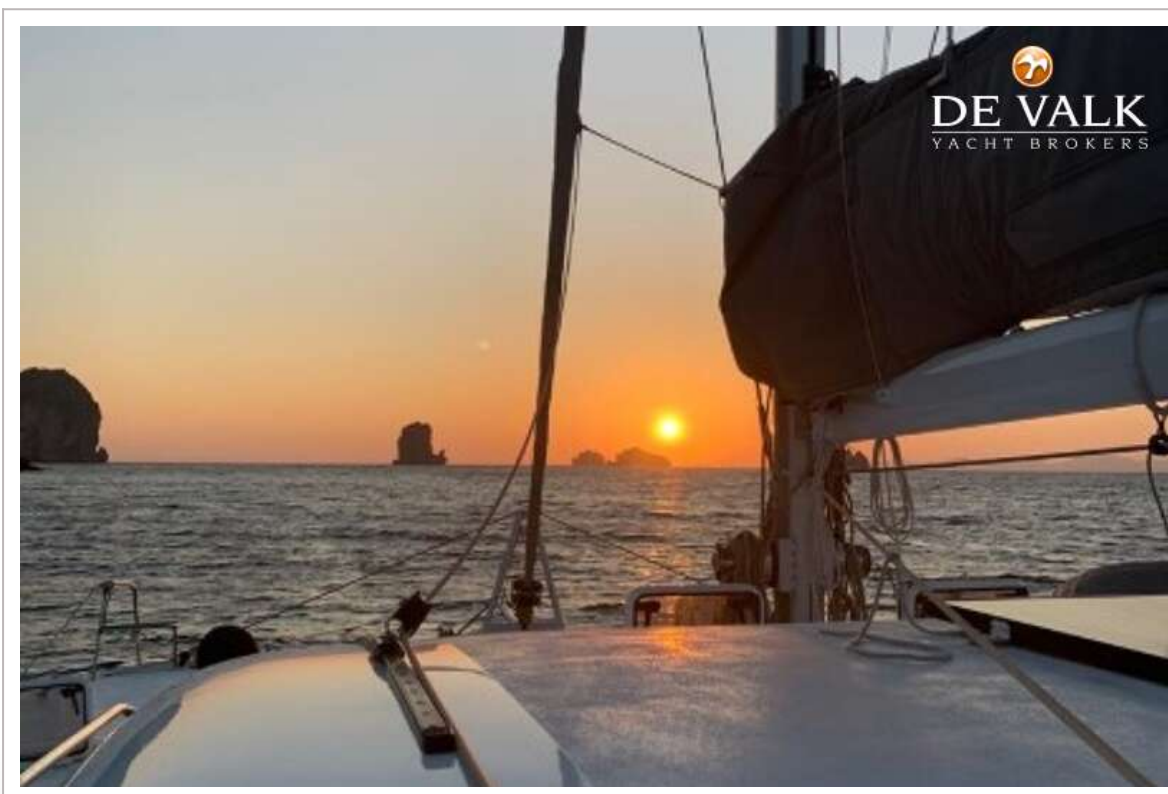
# PUNCH 1500 LC



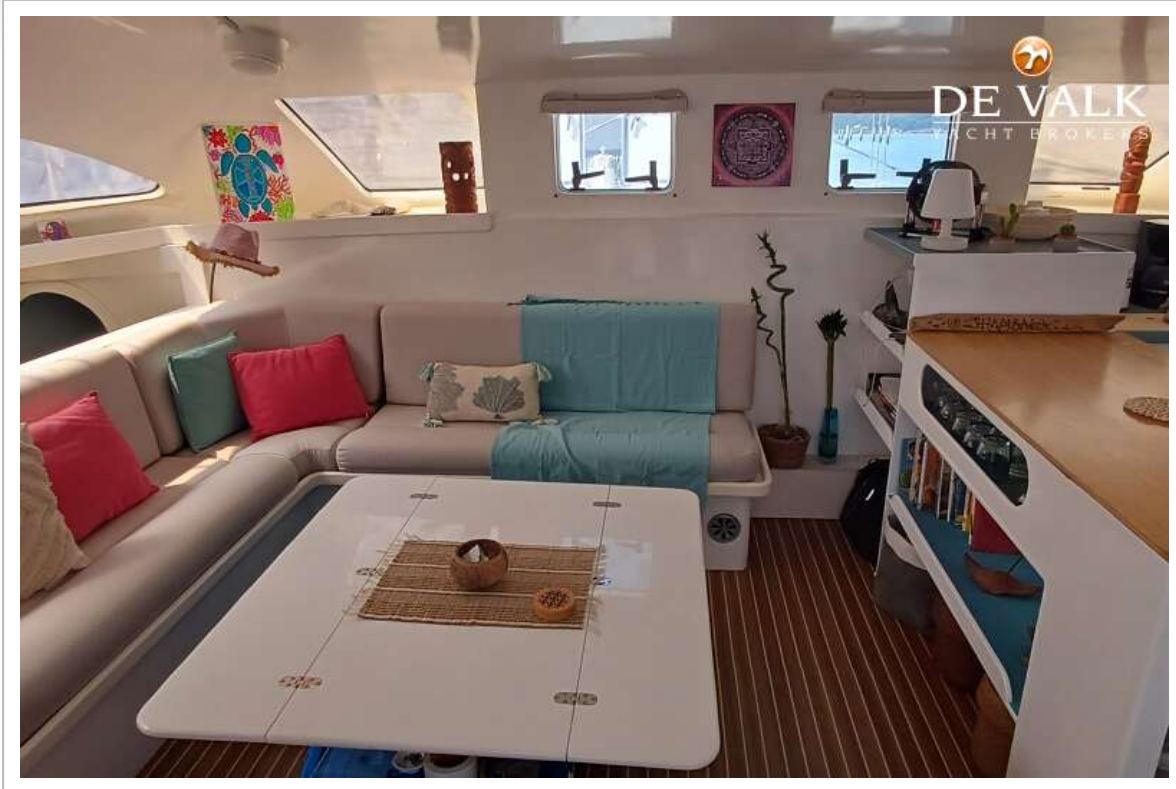
# PUNCH 1500 LC



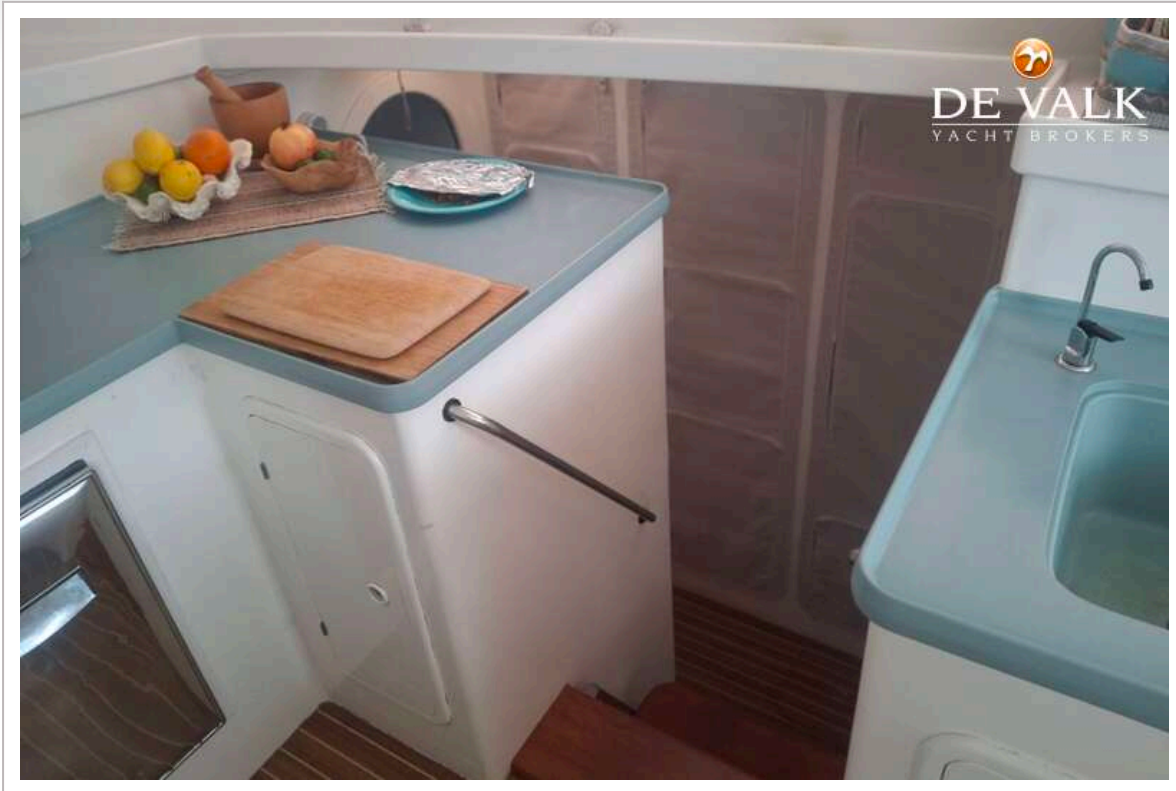
# PUNCH 1500 LC



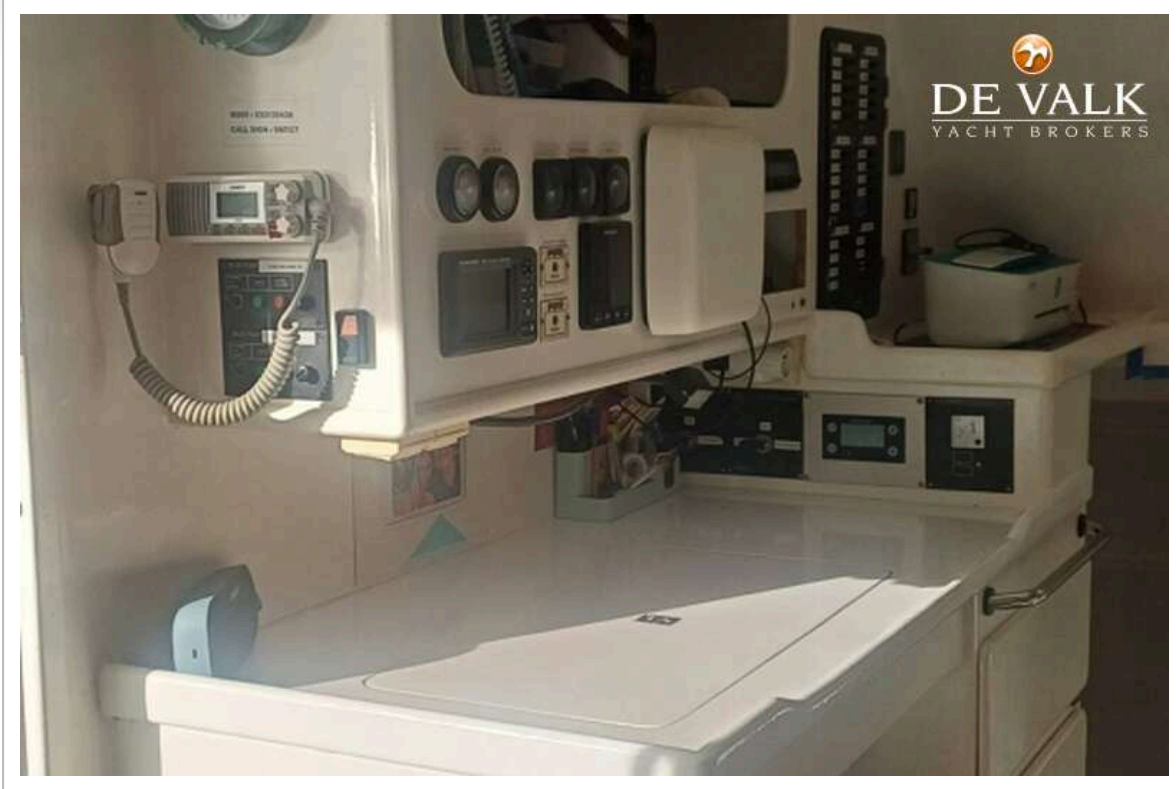
# PUNCH 1500 LC



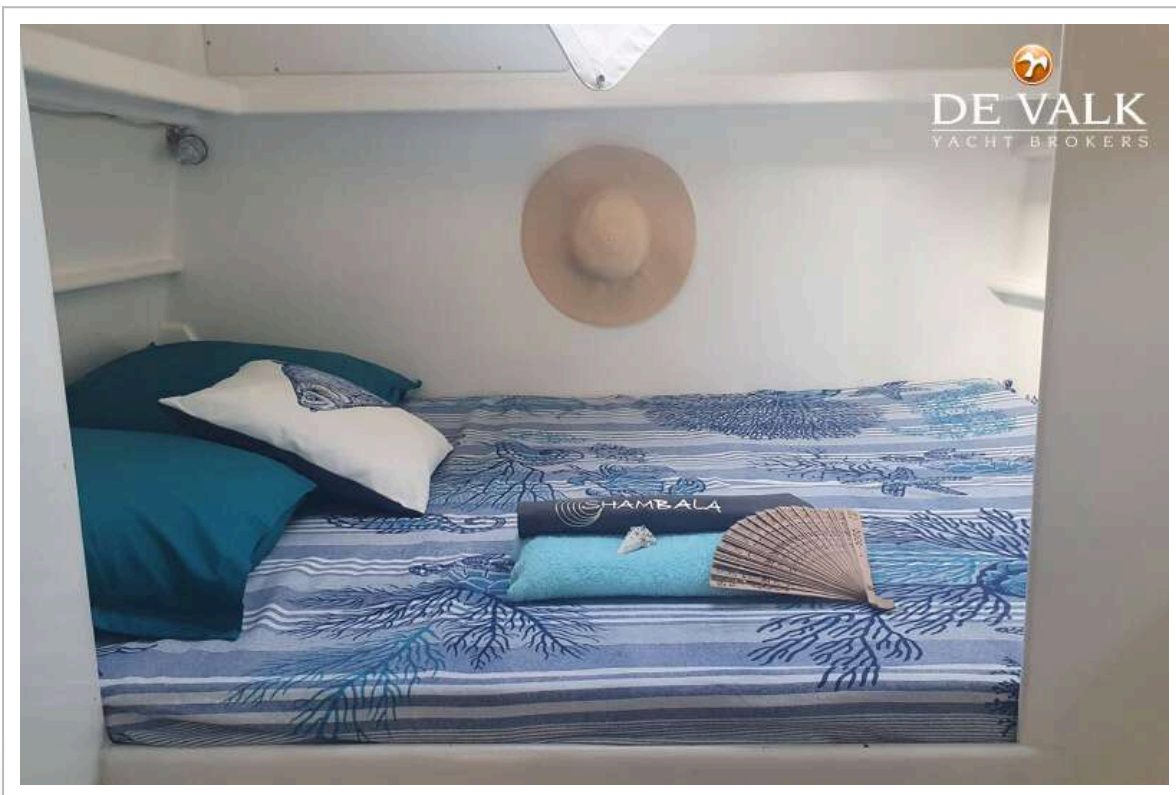
# PUNCH 1500 LC



# PUNCH 1500 LC



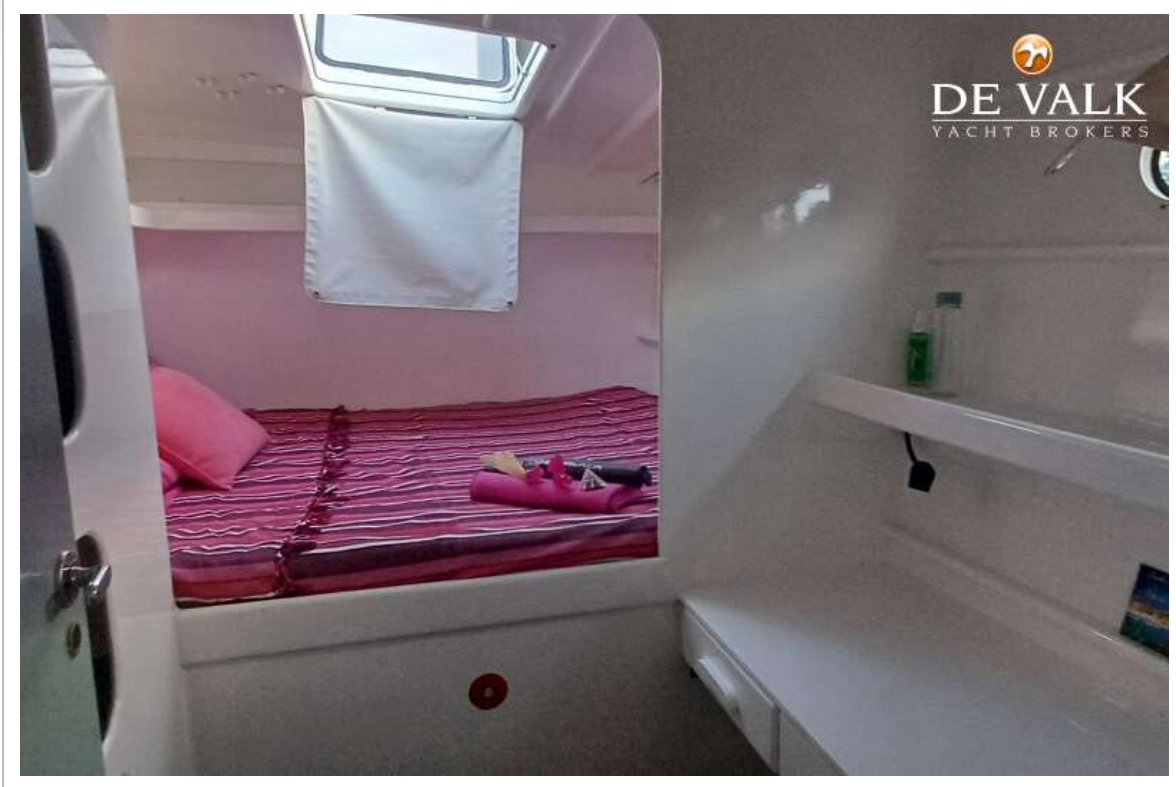
# PUNCH 1500 LC



# PUNCH 1500 LC



# PUNCH 1500 LC



# PUNCH 1500 LC



# PUNCH 1500 LC

