



DE VALK
YACHT BROKERS



BENETEAU OCEANIS 45



DE VALK
YACHT BROKERS

BENETEAU OCEANIS 45

BROKER'S COMMENTS

Well-equipped and professionally maintained Beneteau Oceanis 45 in very good condition. This lightly used and up-to-date cruiser offers a spacious 3-cabin layout with two heads, one with electric toilet and separate shower. Equipped with bow and stern thruster for effortless manoeuvring, plus new interior cushions for a fresh modern look. With solid sailing performance, generous storage and a comfortable cockpit, she is an excellent choice for family cruising or longer stays on board. Viewing highly recommended.

Jochem Heijermans

SPECIFICATIONS

Dimensions	13.50 x 4.49 x 2.27 (m)	Builder	Chantiers Beneteau FRA
Built	2012	Cabins	3
Material	GRP	Berths	6
Engine(s)	1 x Yanmar 4JH5CE diesel	Hp/Kw	55.00 (hp), 40.48 (kw)
Asking price	€ 247.500 (VAT Paid)	Lying	elsewhere / Not at sales office

CONTACT

Sales office	De Valk Belgium	Telephone	+32 586 80 218
Address	1401 PT Nieuwpoort BE	E-mail	belgium@devalk.nl

DISCLAIMER

These particulars are given in good faith as supplied but cannot be guaranteed.



BENETEAU OCEANIS 45

GENERAL

Model	BENETEAU OCEANIS 45
Type	sailing yacht
LOA (m)	13,50
Beam (m)	4,49
Draft (m)	2,27
Air draft (m)	20,60
Headroom (m)	2,00
Year built	2012
Builder	Chantiers Beneteau FRA
Country	France
Designer	Finot - Conq & Nauta Design
Displacement (t)	10,5
Ballast (tonnes)	cast iron 2,8
CE norm	A
Hull material	GRP
Hull colour	white
Keel type	bulb keel
Superstructure material	GRP
Deck material	GRP
Deck finish	teak
Superstructure deck finish	non-skid moulded in
Cockpit deck finish	teak
Antifouling (year)	2025
Deckhatch	yes
Portholes	yes
Fuel tank (litre)	polyethylene 200
Freshwater tank (litre)	polyethylene 370 (+ 200 ltr extra)
Blackwater tank (litre)	polyethylene 64 + 80 ltr
Blackwater tank extraction	deck extraction + uw line
Wheel steering	cable steering Lewmar twin (leather covered) steeringwheel



Emergency tiller yes

ACCOMMODATION

Cabins 3
Berths 6
Interior Alpi mahogany
Floor parquet Mahogany
Saloon With U shaped saloon bench
Headroom saloon (m) 2,00 - 1,97
Heating diesel ducted hot air Planar (remote by app) with heating points in all cabins
Chart table yes
Aft Cabin 2x
Galley L-Shaped - On Port Side - Headroom : 2,00 m
Countertop plastic Grey
Sink stainless steel 2 x
Cooker calor gas Eno, 2 x burner
Oven Eno
Fridge 1 x Vitrifrigo front loader & 1 x top loader with a compressor
Freezer Small freezer compartment in the frontloader fridge
Hot water system 220V
Water pressure system electrical
Manual and/or foot pump yes
Owners cabin French bed In front cabin - Headroom : 1,95 m
Bed length (m) 2,00 x 1,65/1,75/1,65
Wardrobe hanging/drawers/shelves
Bathroom Headroom : 1,82 m
Toilet en suite
Toilet system electric Jabsco Quiet Flush
Wash basin in the bathroom
Shower en suite Seperate shower compartment - Headroom : 1,82 m



Guest cabin 1	double bed Starboard aft cabin - Headroom : 1,94 m
Bed length (m)	2,00 x 1,55
Wardrobe	hanging and shelves
Bathroom	shared
Toilet	shared
Toilet system	manual
Wash basin	in the bathroom
Shower	shared Seperate shower compartment - Headroom : 1,82 m
Guest cabin 2	double bed Port Side aft cabin - Headroom : 1,94 m
Bed length (m)	2,00 x 1,40
Wardrobe	hanging and shelves
Extra info	Heater burner (2026)

MACHINERY

No of engines	1
Make	Yanmar
Type	4JH5CE
HP	55
kW	40.48
Fuel	diesel
Maximum speed (kn)	7
Cruising speed (kn)	6
Consumption (l/hr)	3,5
Engine hours	1300
Engine cooling system	freshwater heat exchanger
Drive	shaft
Engine controls	bowden cable
Bowthruster	electric
Sternthruster	electric (2020)
Exhaust	watercooled
Propeller type	folding



BENETEAU OCEANIS 45

Manual bilge pump	yes
Electrical installation	12V/220V
Start battery	yes
Service battery	yes
Bowthruster battery	yes
Sternthruster battery	yes
Battery monitor	yes
Battery charger	yes
Shorepower	with cable

NAVIGATION

Compass	2 x Plastimo Olympic 135
Multi control display	B&G
Depth sounder	Simrad
Windset	B&G
VHF	B&G
Autopilot	Simrad
Rudder angle indicator	yes
Radar/GPS/plotter	Simrad 12" (2024) + 2x Simrad
AIS transceiver	yes
Navigation lights	yes

EQUIPMENT

Sprayhood	(2022)
Cockpit cover	(2022)
Cockpit cushions	yes
Cockpit table	yes
Bathing platform	Electric controlled - covered with teak
Boarding ladder	stainless steel
Deck shower	(Hot & cold pressured)
Anchor	yes



Windlass	electrical
Sea railing	wire
Grab rail (superstructure)	stainless steel
Railing side opening gates	On both sides
Pushpit	yes
Pulpit	yes
Fenders	yes
Mooring lines	yes

RIGGING

Rigging	fractional
Standing rigging	wire
Brand mast	Z-Spar
Material mast	aluminium
Spreaders	2 x Set
Mainsail cover	Elvstrøm
Genoa	Elvstrøm
Genoa furler	yes
Code Zero	Wittewrongel
Reefing System	main in-mast furling
Boomvang	gasspring Z-Spar
Genoa sheetwinches	2 x Harken 46ST (Electric)
Halyard winches	1x Harken 900ST Unipower (Electric) & 1x Harken 40ST (Manual)
Gennaker pole	stainless steel



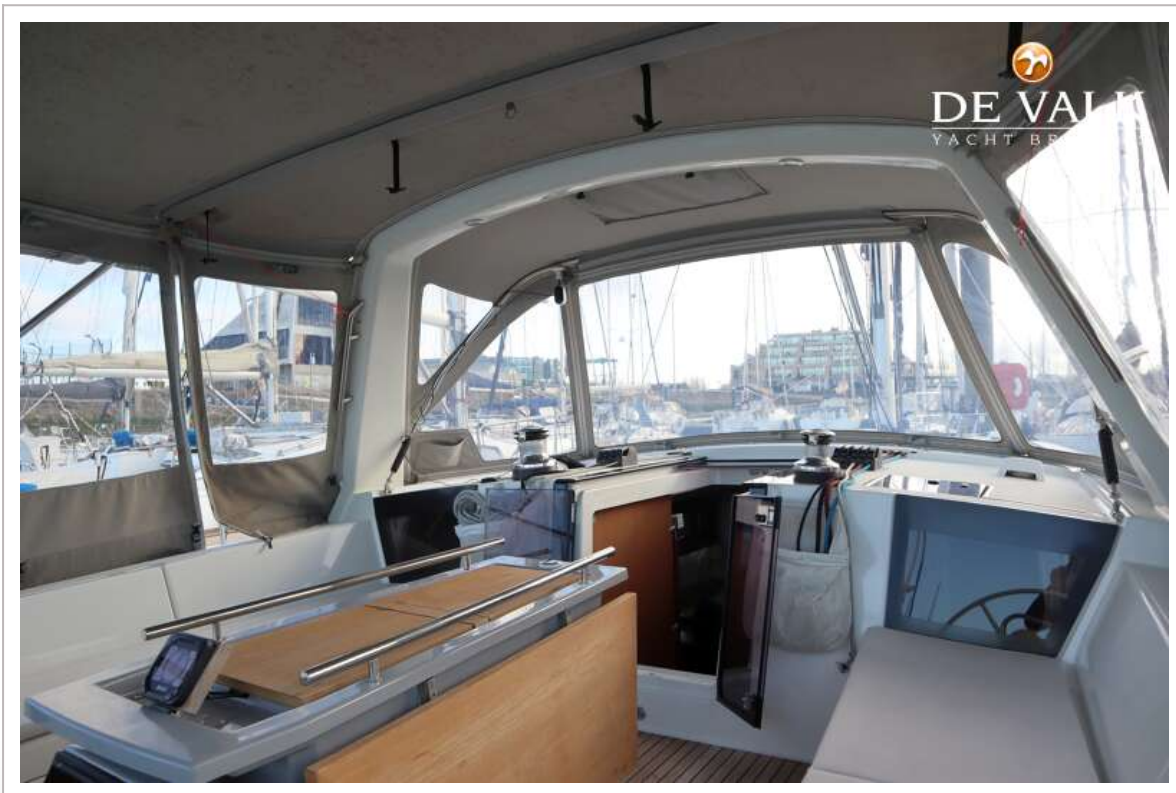
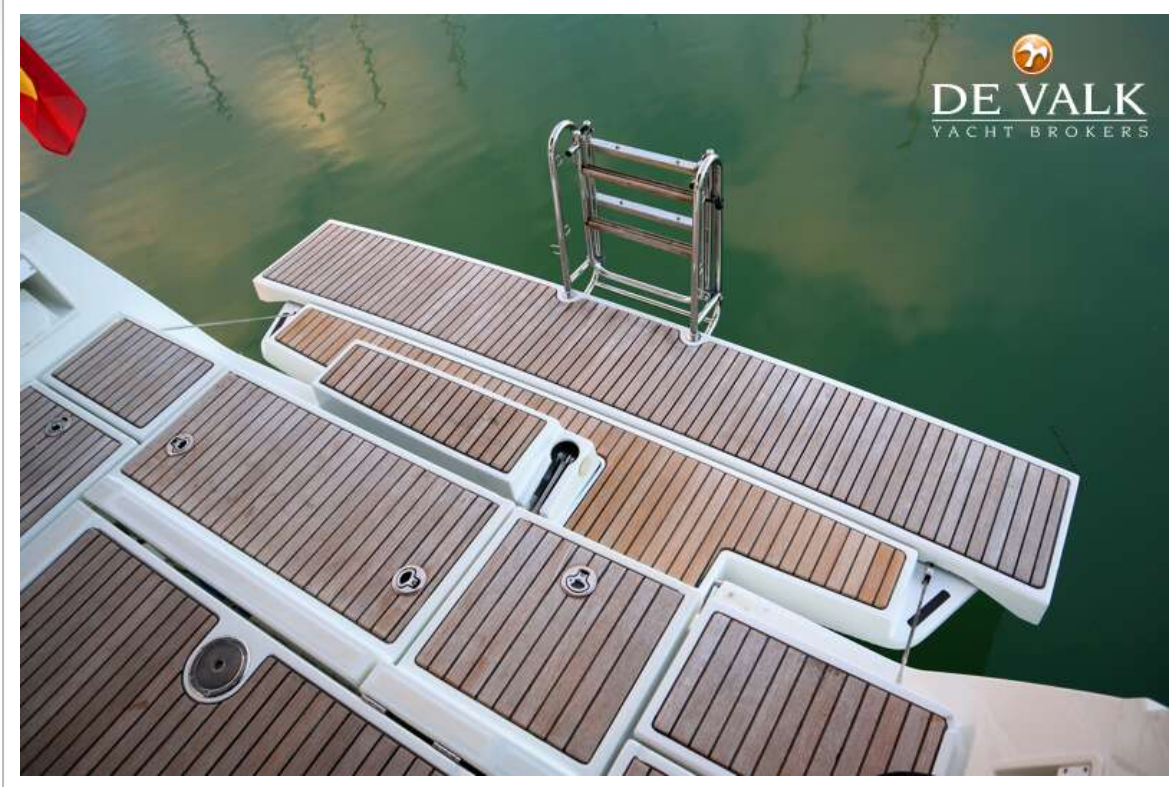
BENETEAU OCEANIS 45



BENETEAU OCEANIS 45



BENETEAU OCEANIS 45



BENETEAU OCEANIS 45



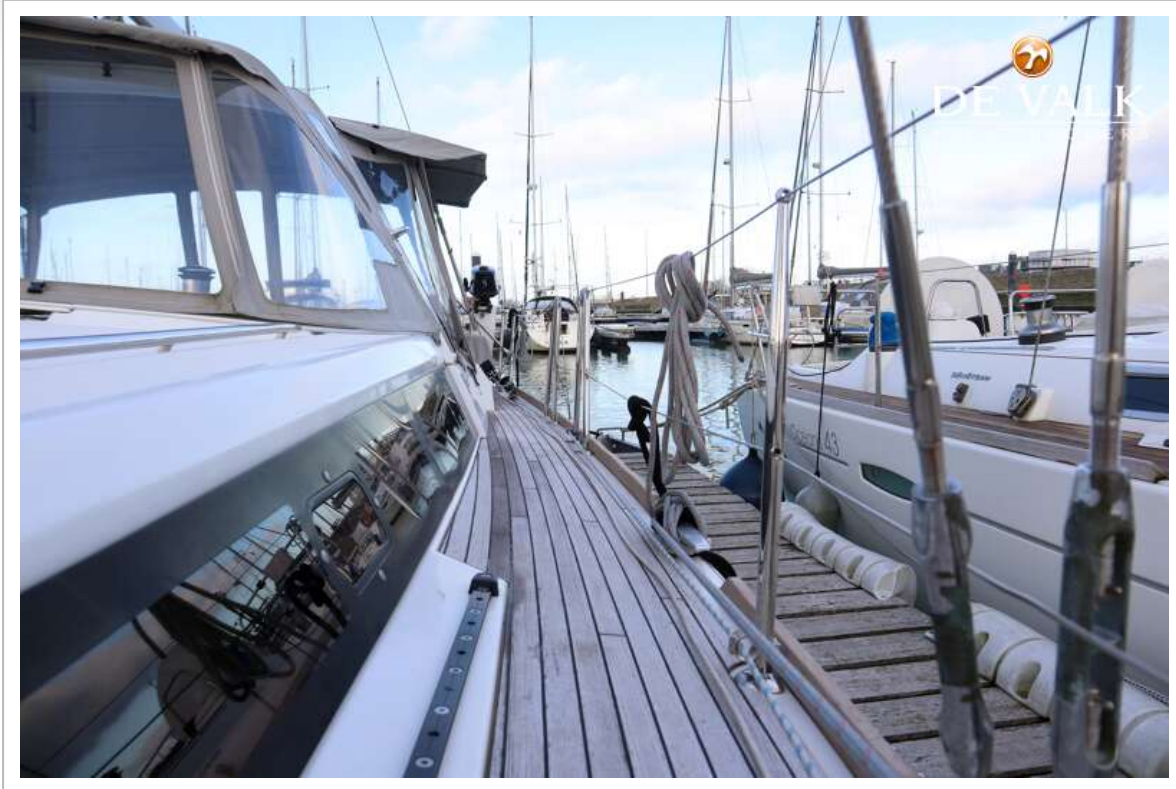
BENETEAU OCEANIS 45



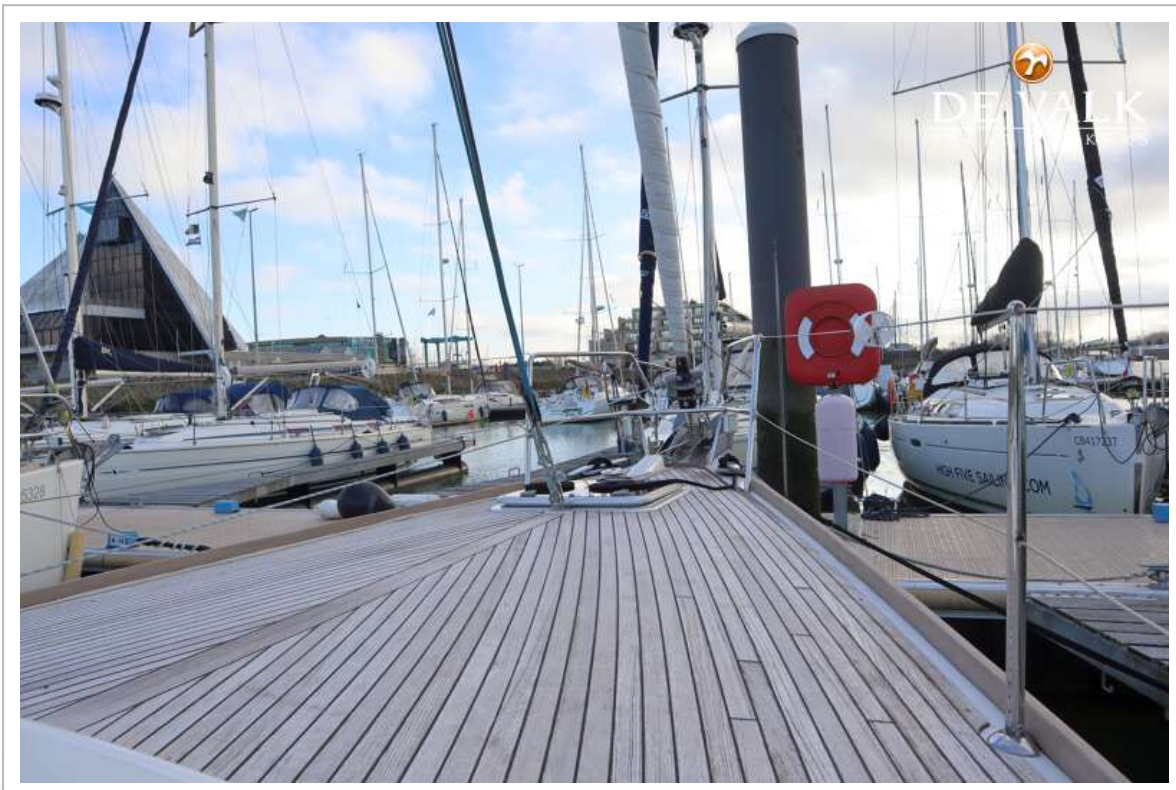
BENETEAU OCEANIS 45



BENETEAU OCEANIS 45



BENETEAU OCEANIS 45



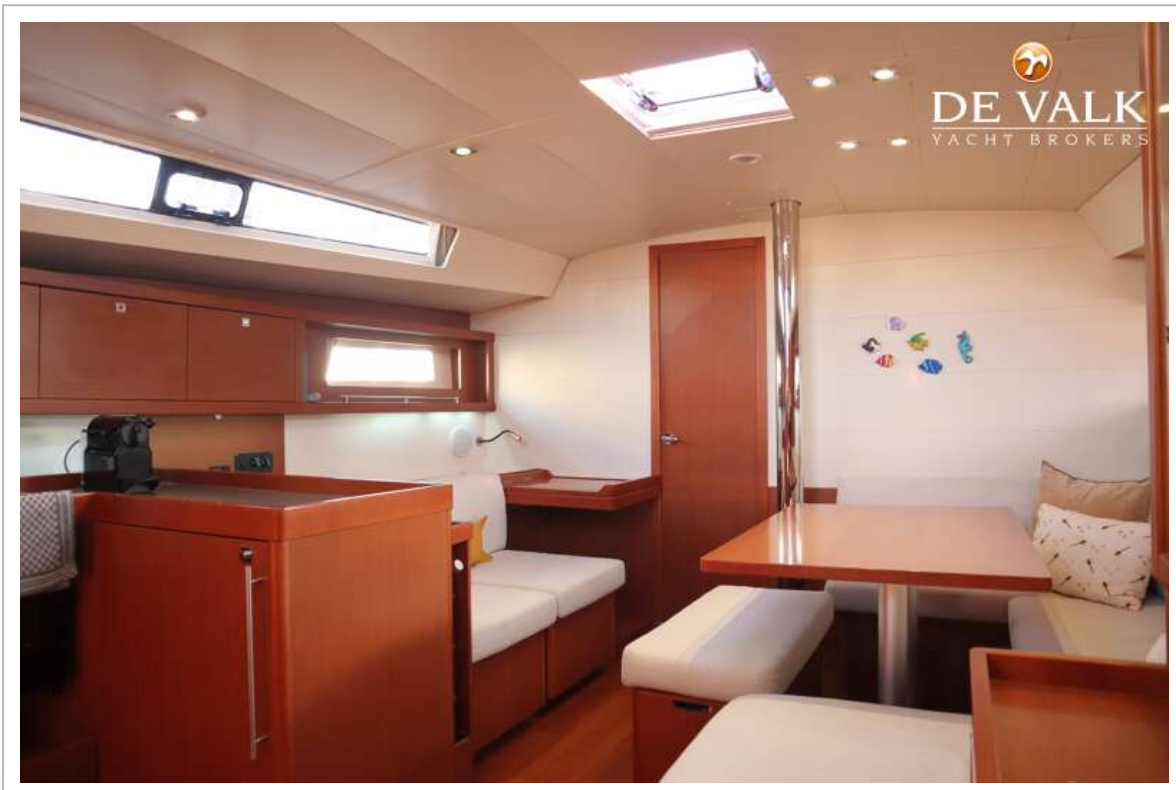
BENETEAU OCEANIS 45



BENETEAU OCEANIS 45



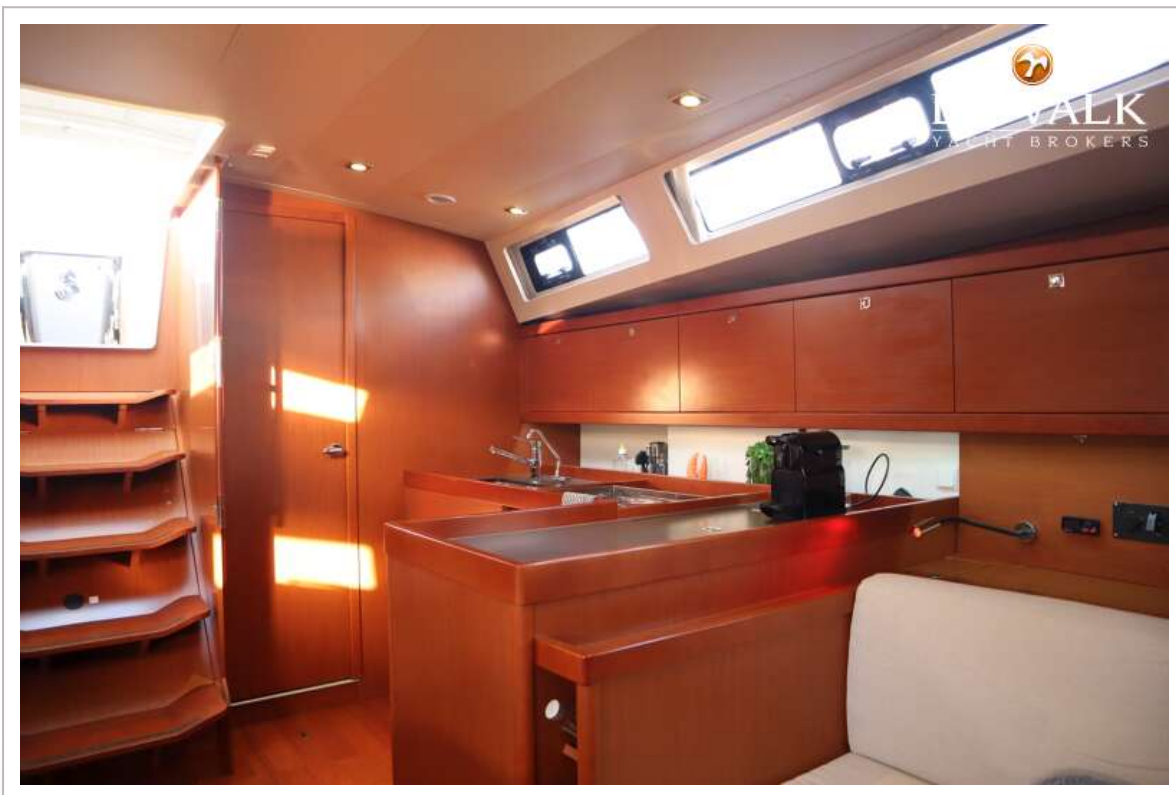
BENETEAU OCEANIS 45



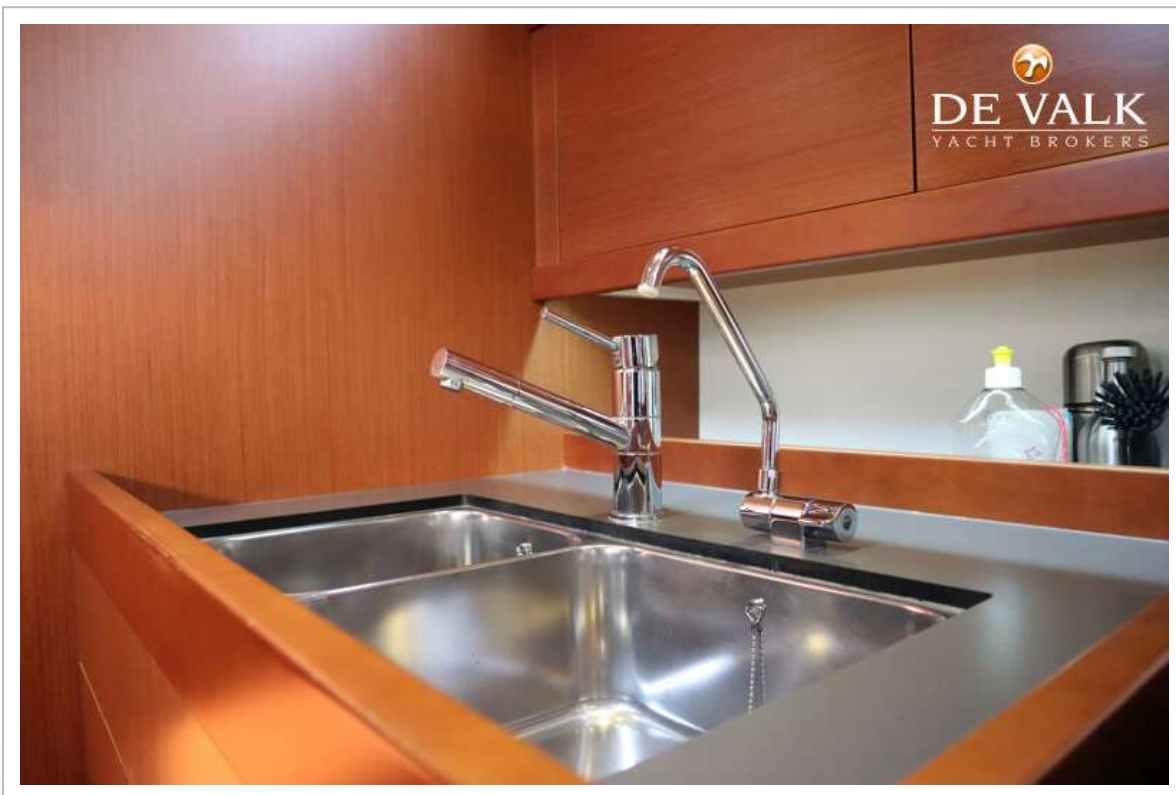
BENETEAU OCEANIS 45



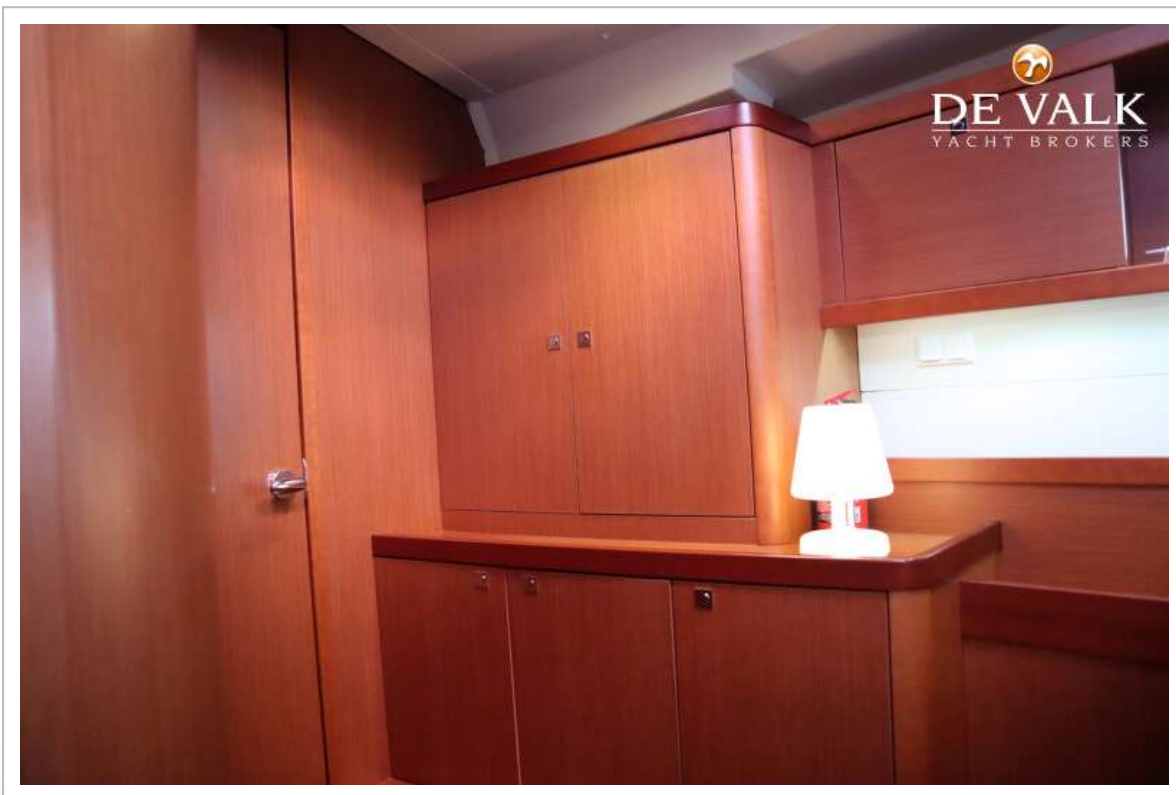
BENETEAU OCEANIS 45



BENETEAU OCEANIS 45



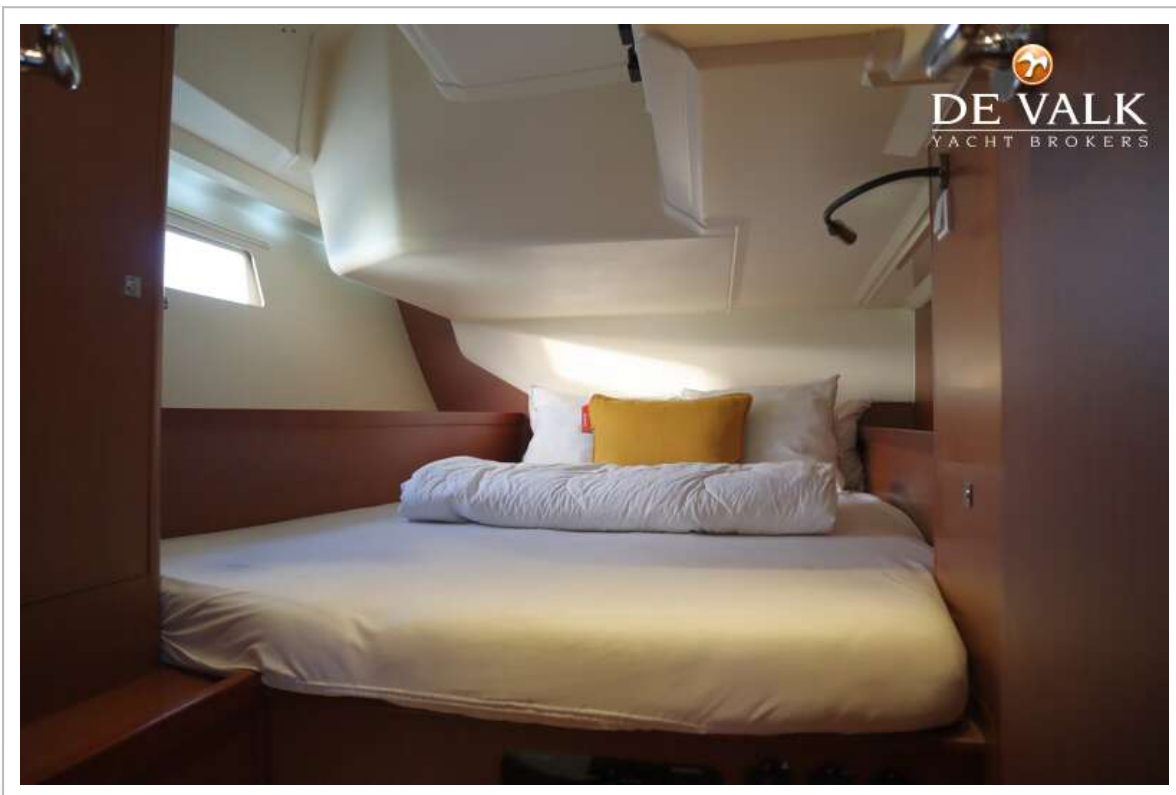
BENETEAU OCEANIS 45



BENETEAU OCEANIS 45



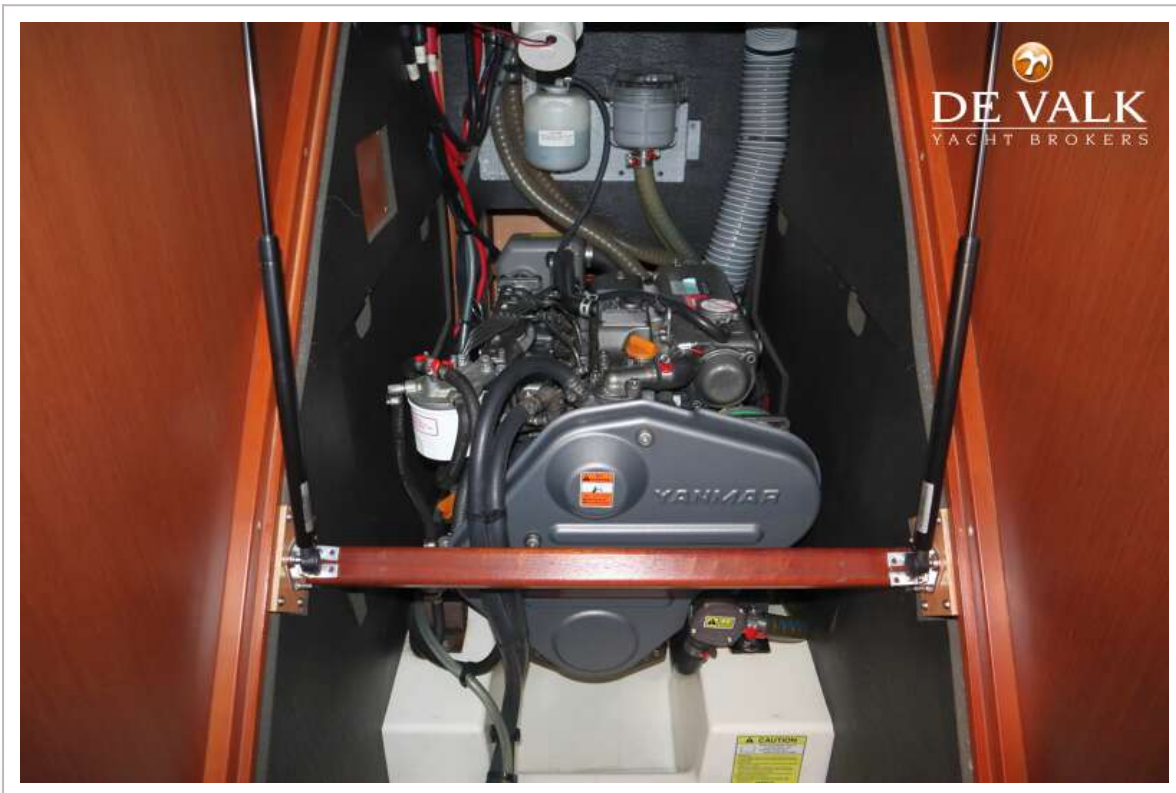
BENETEAU OCEANIS 45



BENETEAU OCEANIS 45



BENETEAU OCEANIS 45



BENETEAU OCEANIS 45

