



HOLTERMAN 50 CABRIO

HOLTERMAN 50 CABRIO

BROKER'S COMMENTS

Discover this timeless Holterman 50 Cabrio, where luxury, comfort, and craftsmanship come together. On board, you can enjoy optimal comfort throughout the year thanks to double glazing and underfloor heating. The sailing characteristics are exceptional; stabilizers and two powerful John Deere engines ensure reliability, smoothness, and stability in all conditions. The yacht is also equipped with a generator and many other luxurious options, leaving nothing to be desired. The vessel is neatly stored in a boathouse and can be viewed by appointment only.

Mark Hesselmans

SPECIFICATIONS

Dimensions	15.14 x 4.60 x 1.25 (m)	Builder	Holterman
Built	2012	Cabins	2
Material	Steel	Berths	4
Engine(s)	2 x John Deere 6068TFM75 diesel	Hp/Kw	2 x 200.00 (hp), 147.20 (kw)
Asking price	€ 675.000 (VAT Paid)	Lying	at sales office

CONTACT

Sales office	De Valk Sneek	Telephone	+31 (0)515 42 80 30
Address	Zwolsmanweg 7 8606 KC Sneek NL	E-mail	sneek@devalk.nl

DISCLAIMER

These particulars are given in good faith as supplied but cannot be guaranteed.



HOLTERMAN 50 CABRIO

GENERAL

Model	HOLTERMAN 50 CABRIO
Type	motor yacht
LOA (m)	15,14
LWL (m)	13,36
Beam (m)	4,60
Draft (m)	1,25
Air draft (m)	5,90
Air draft min (m)	3,45
Year built	2012
Builder	Holterman
Country	The Netherlands
Designer	Pieter Beeldsnijder
Displacement (t)	30
CE norm	B
Hull material	steel
Hull colour	beige
Hull thickness (mm)	5
Hull shape	round-bilged
Keel type	long keel
Superstructure material	steel
Superstructure (mm)	4
Deck plate thickness (mm)	4
Rubbing strake	stainless steel
Deck material	steel
Deck finish	teak
Superstructure deck finish	paint
Cockpit deck finish	teak
Antifouling (year)	Maart 2026
Dorades	2x Vetus
Window frame	aluminium Rafa



HOLTERMAN 50 CABRIO

Window material	double glazing
Deckhatch	2x
Portholes	aluminium 10x all can be opened
Insulation	foam
Radar arch	collapsible
Mast can be lowered	hydraulic
Fuel tank (litre)	steel 900
Fuel tank 2 (litre)	steel 900
Level indicator (fuel tank)	Integrated in screen helmposition
Freshwater tank (litre)	stainless steel 1200
Level indicator (freshwater)	Integrated in screen helmposition
Blackwater tank (litre)	stainless steel 500
Level indicator (blackwater)	Integrated in screen helmposition
Blackwater tank extraction	deck extraction + pump
Wheel steering	hydraulic
Outside helm position	yes
Extra info	yes

ACCOMMODATION

Cabins	2
Berths	4
Interior	mahogany
Floor	carpet
Aft deck	yes
Saloon	yes
Heating	central heating Kabola + floor heating
Air-conditioning	reverse cycle airco Mar-IX
Aft Cabin	yes
Opening door to cockpit	yes
Galley	yes
Countertop	plastic



HOLTERMAN 50 CABRIO

Sink	stainless steel
Cooker	induction Induction Miele 4-burner
Oven	Miele
Extractor	Miele
Gas alarm	yes
Microwave	yes
Fridge	1x Fridge Miele + 1x Waece cool drawer in salon
Freezer	1x Freezer
Hot water system	on central heating Kabola
Water pressure system	electrical
Dishwasher	Miele
Owners cabin	double bed
Bed length (m)	2,00 x 1,60
Wardrobe	hanging/drawers/shelves
Bathroom	en suite
Toilet	en suite
Toilet system	electric
Wash basin	in the bathroom
Shower	en suite
Guest cabin 1	double bed
Bed length (m)	2,00 x 1,40
Wardrobe	hanging/drawers/shelves
Bathroom	en suite
Toilet	en suite
Toilet system	electric
Wash basin	in the bathroom
Shower	en suite
Washing machine/dryer combi	Miele

MACHINERY

No of engines	2
---------------	---



HOLTERMAN 50 CABRIO

Make	John Deere
Type	6068TFM75
HP	200
kW	147.20
Fuel	diesel
Maximum speed (kn)	12
Cruising speed (kn)	8
Engine cooling system	freshwater heat exchanger
Drive	shaft
Engine controls	electrical Hydronautica + remotecontrol + joystick
Gearbox	hydraulic ZF220
Bowthruster	hydraulic 300KgF
Sternthruster	hydraulic 220KgF
Thrust bearing	Aquadrive
Propeller type	fixed
Propeller blades	4
Propeller shaft material	stainless steel
Shaft lubrication	water
Manual bilge pump	1x
Electric bilge pump	3x
Bilge alarm	yes
Electrical installation	24V/220V
Generator	wet exhaust Cummins 9Kva
Running hours generator	+/- 500
Start battery	2x
Service battery	yes
Generator battery	1x
Battery monitor	Victron Energy
Battery charger/inverter	Victron Quattro 24V/5000/120Amp
Shorepower	with cable
Insulation transformer	Victron 7000
Stabilizers	fin Vetus



NAVIGATION

Electric compass	Raymarine Hybridtouch E120
Depth sounder/log	Raymarine
VHF	2x Raymarine Ray240E
Autopilot	Raymarine
Rudder angle indicator	Integrated in Autopilot
Plotter/GPS	Raymarine Hybridtouch E120
AIS transceiver	yes
Camera	3x
Navigation lights	Lopolight
Searchlight	yes

EQUIPMENT

Fixed windscreen	yes
Sprayhood	Convertible top, Electric operated.
Bimini	yes
Cockpit cushions	yes
Cockpit table	Teak
Cockpit chairs	yes
Bathing platform	yes
Boarding ladder	stainless steel
Transom door	Both sides
Deck shower	Warm + cold water
Anchor	yes
Anchor chain	yes
Windlass	electrical
Sea railing	stainless steel
Grab rail (superstructure)	steel
Railing side opening gates	Both sides
Wiper	3x Exalto
Window heating	Airco



HOLTERMAN 50 CABRIO

Horn	air pressure
Fenders	yes
Mooring lines	yes
TV	2x Samsung
TV receiver	yes
Radio	Sony
Speakers in salon	Bose
Clock - barometer	yes



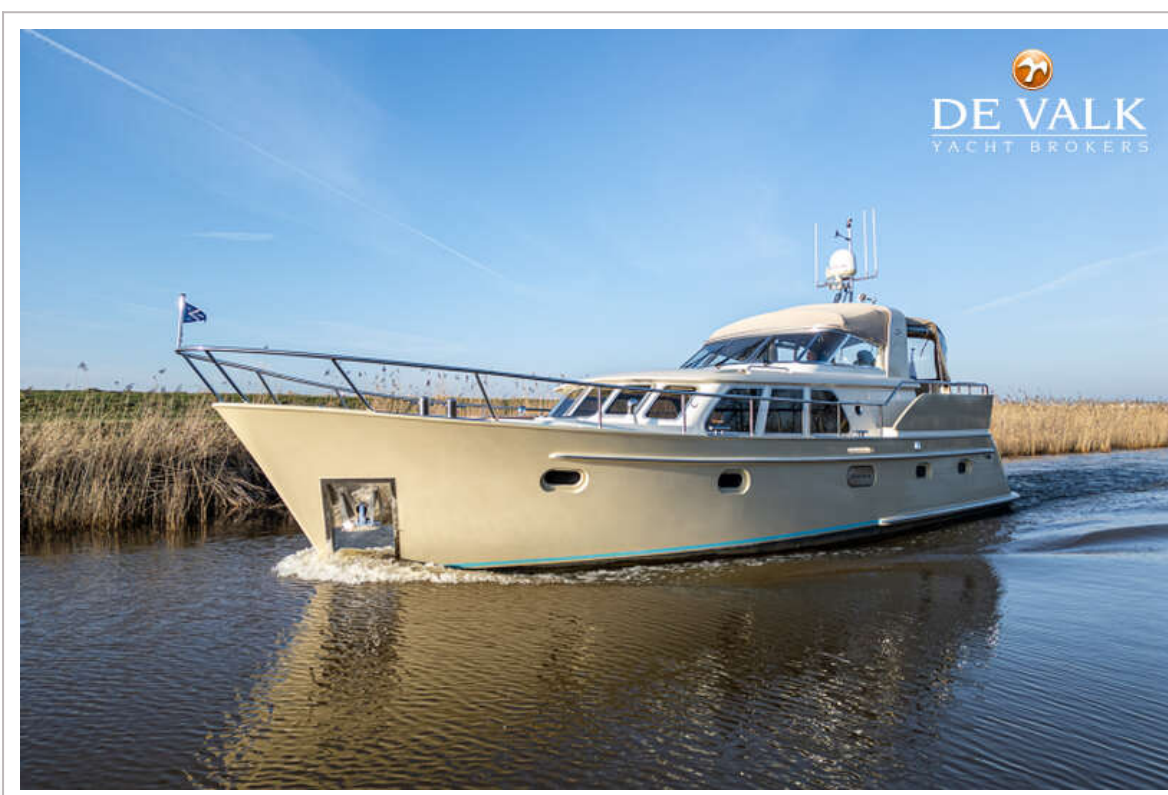
HOLTERMAN 50 CABRIO



HOLTERMAN 50 CABRIO



HOLTERMAN 50 CABRIO



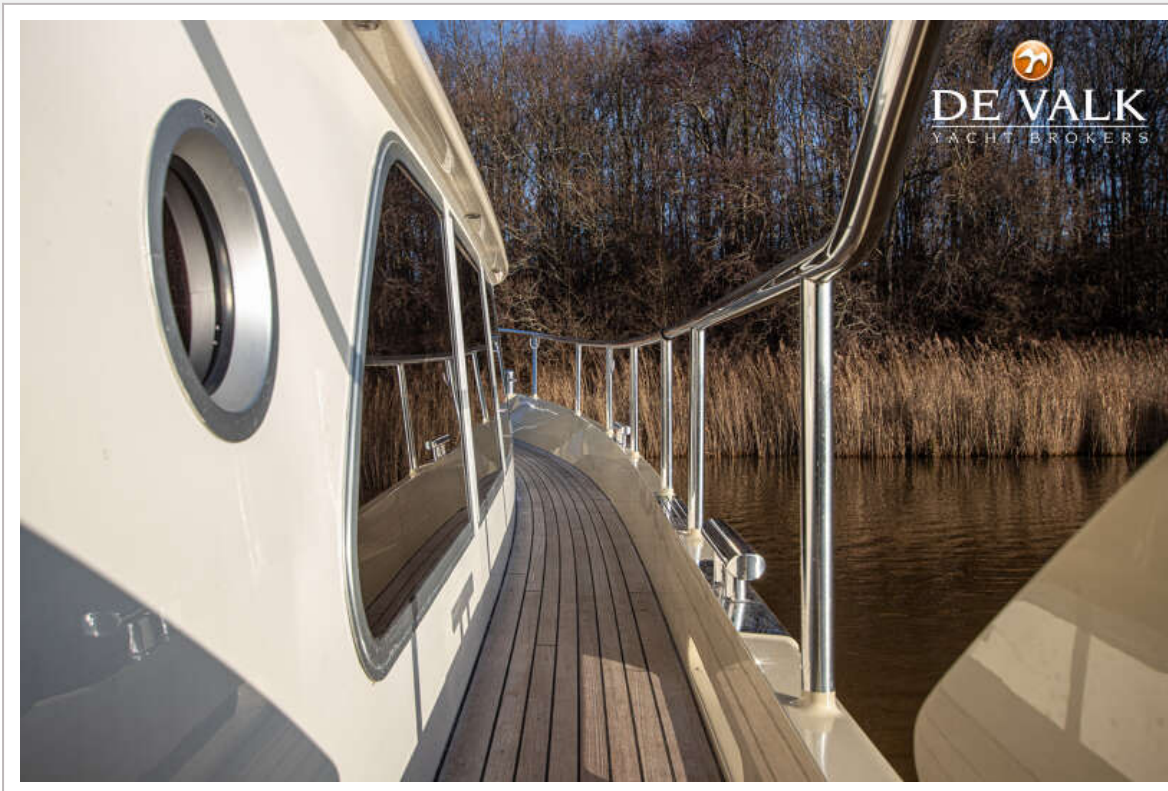
HOLTERMAN 50 CABRIO



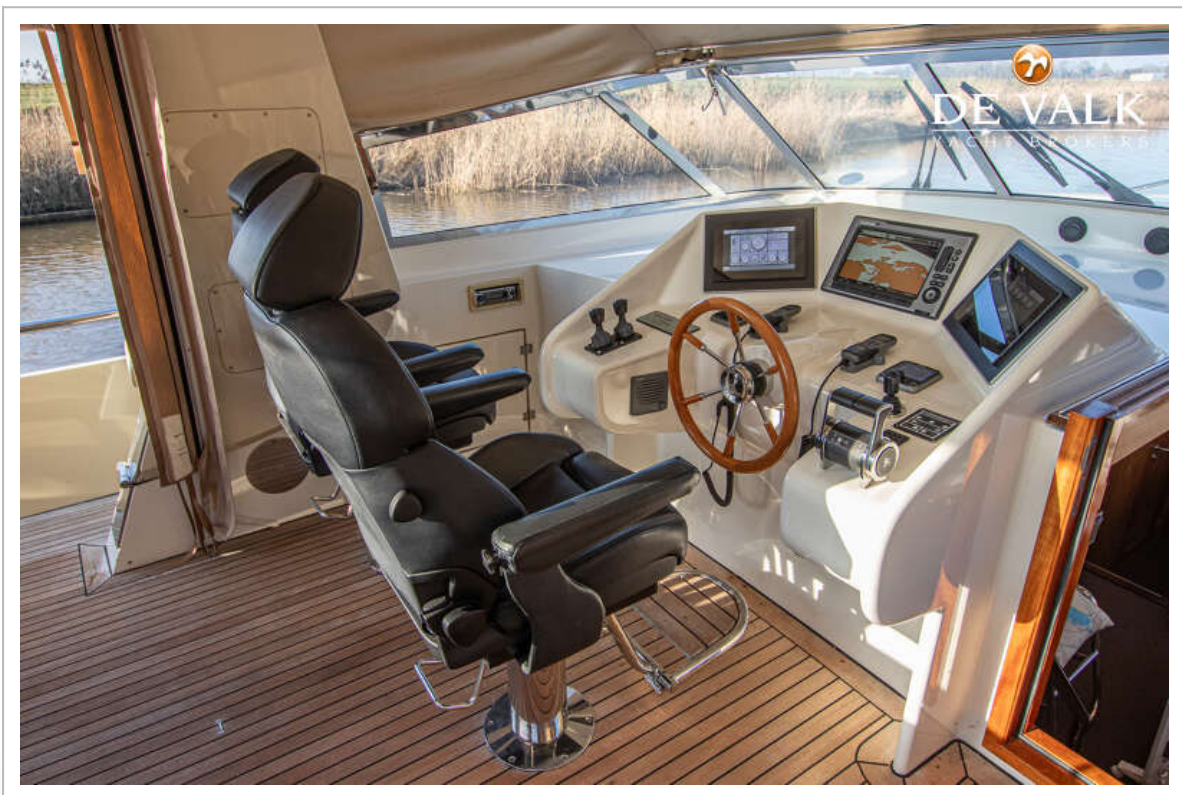
HOLTERMAN 50 CABRIO



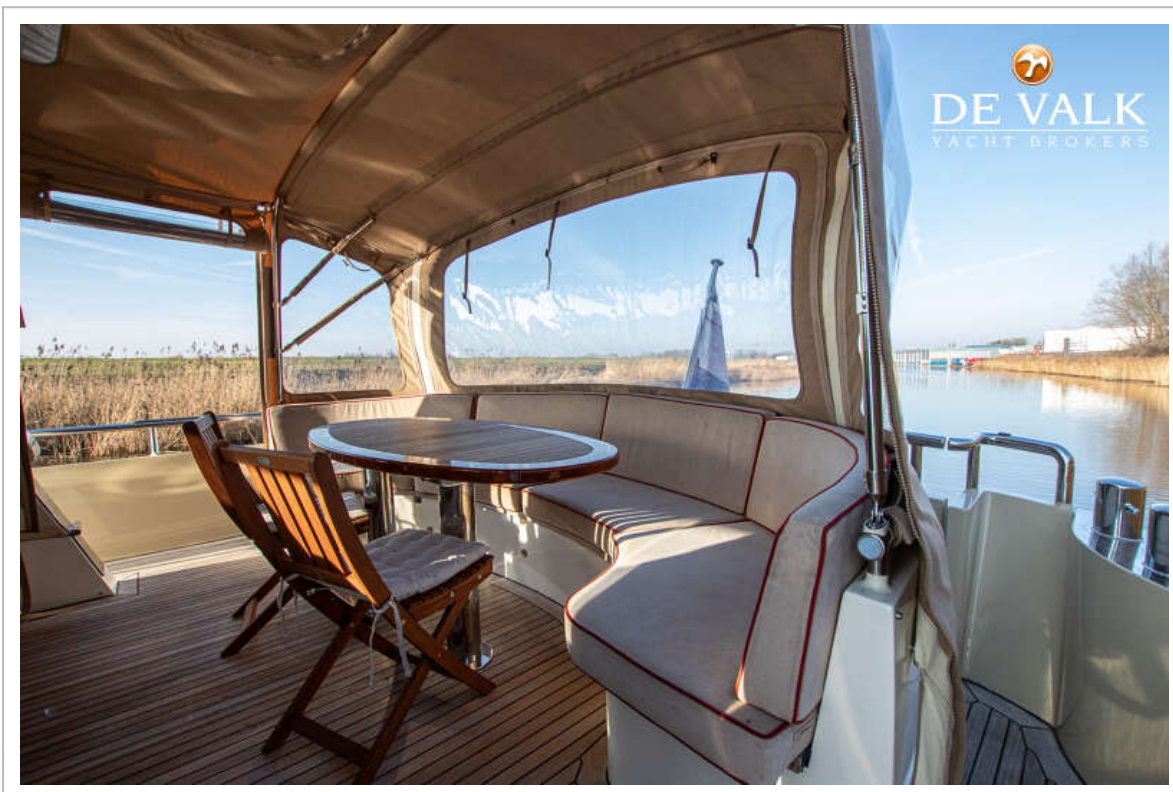
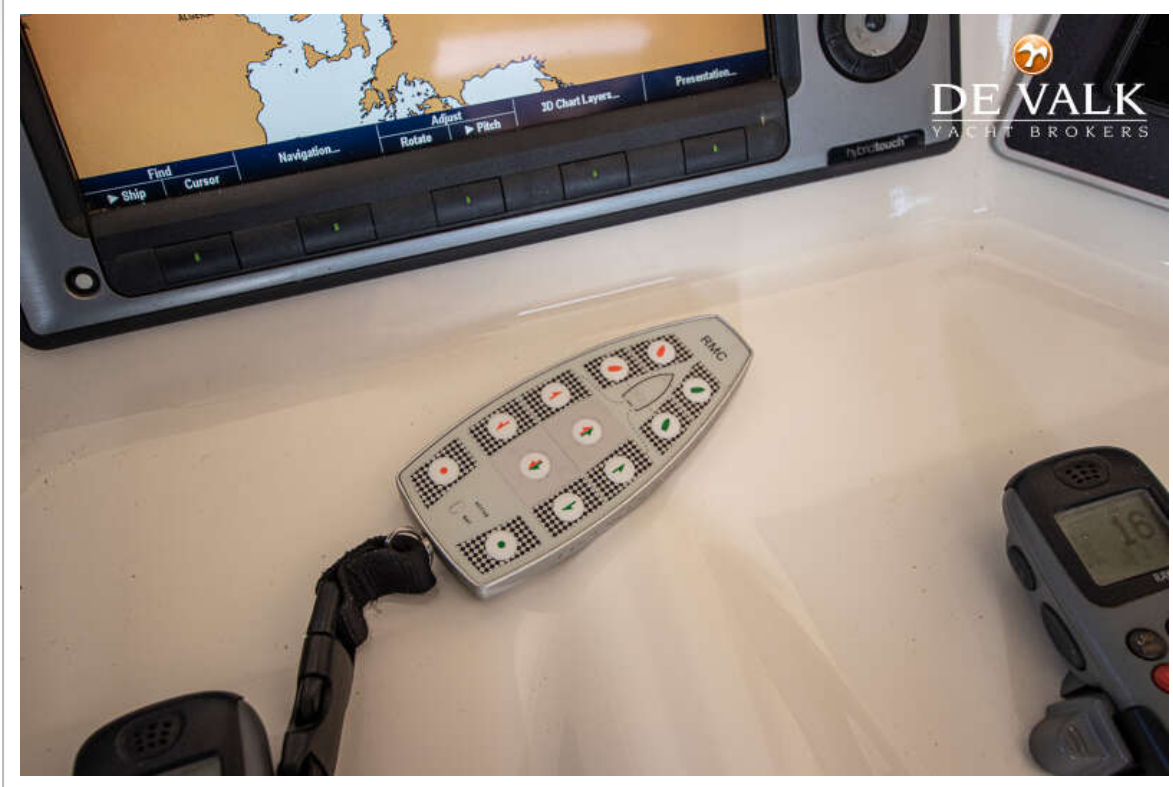
HOLTERMAN 50 CABRIO



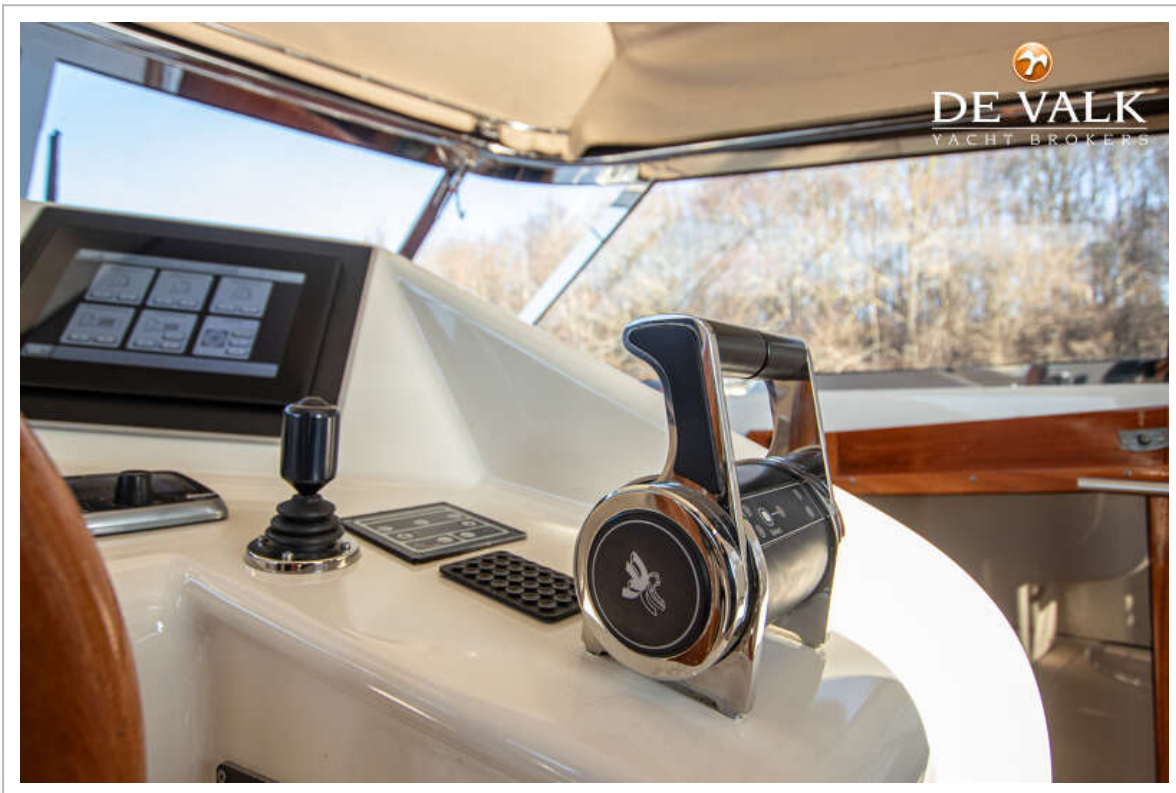
HOLTERMAN 50 CABRIO



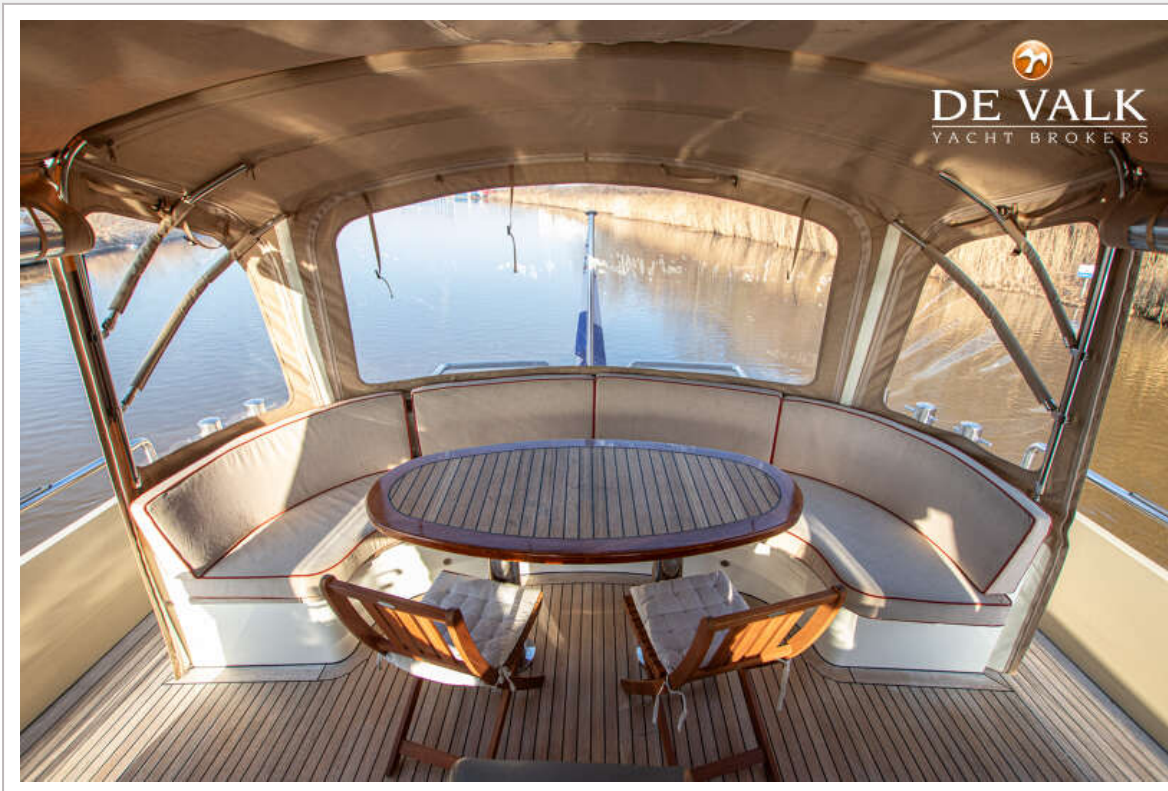
HOLTERMAN 50 CABRIO



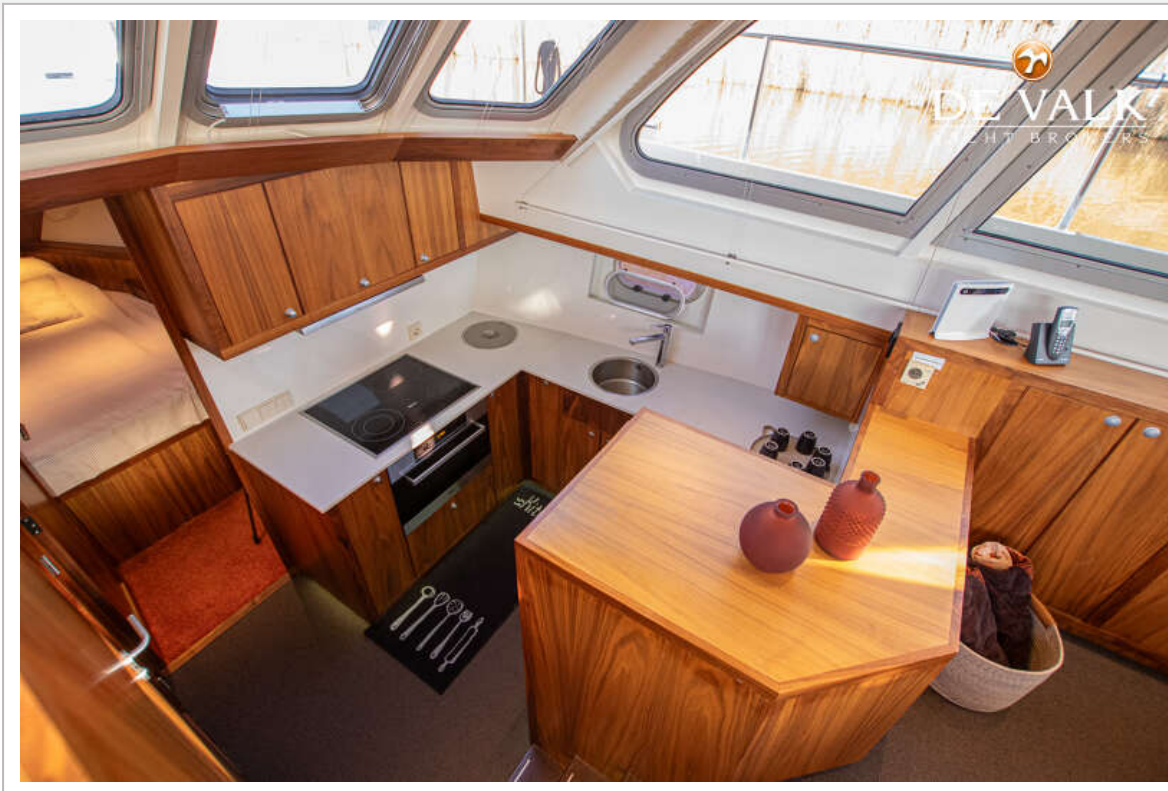
HOLTERMAN 50 CABRIO



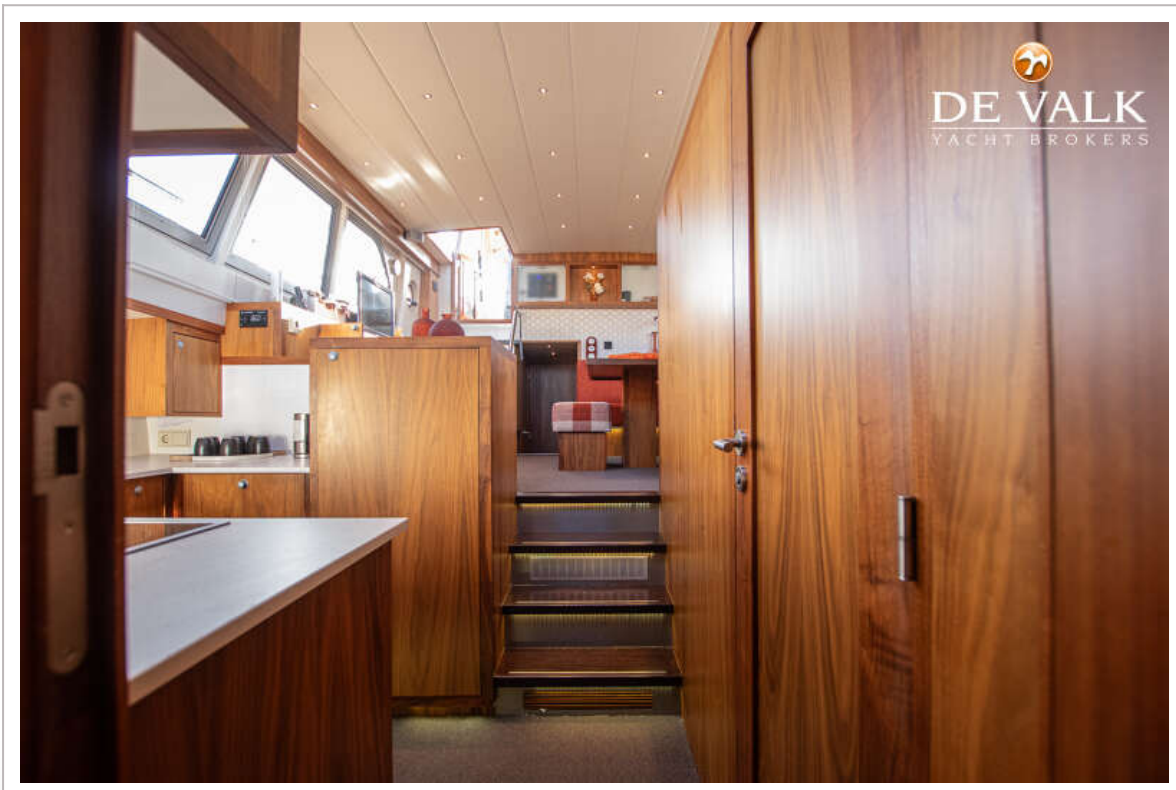
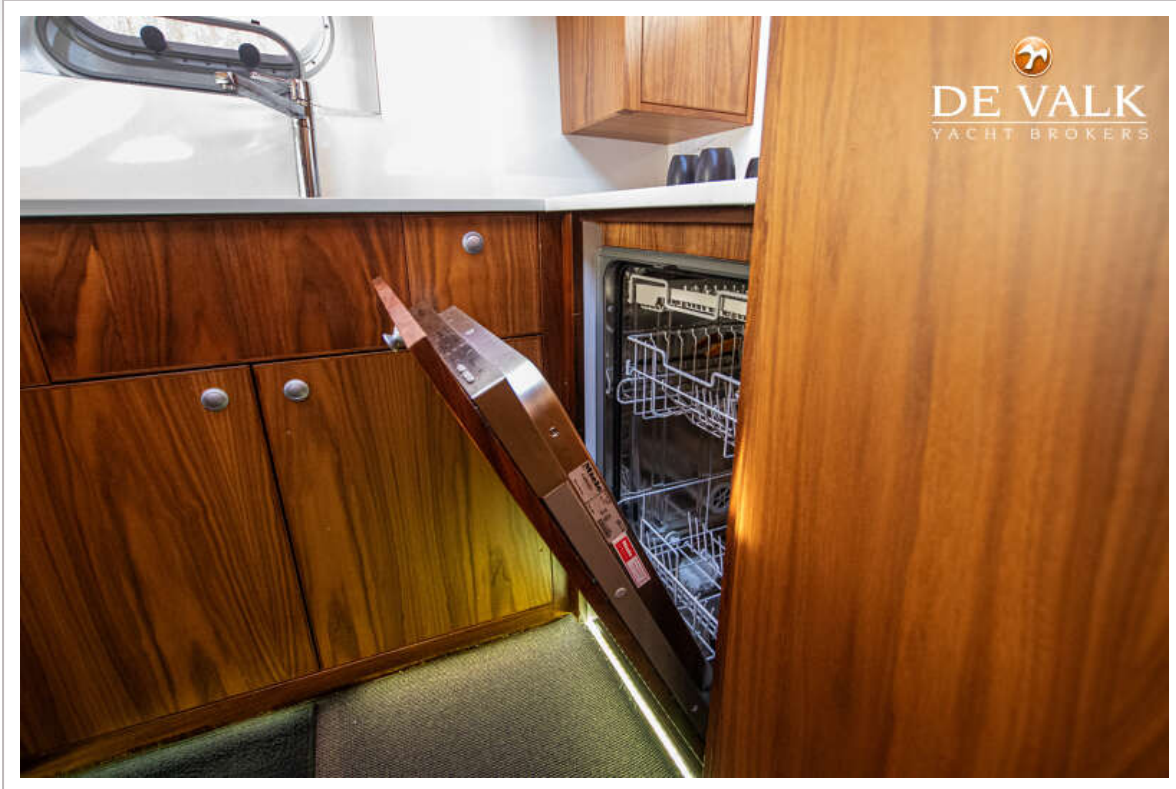
HOLTERMAN 50 CABRIO



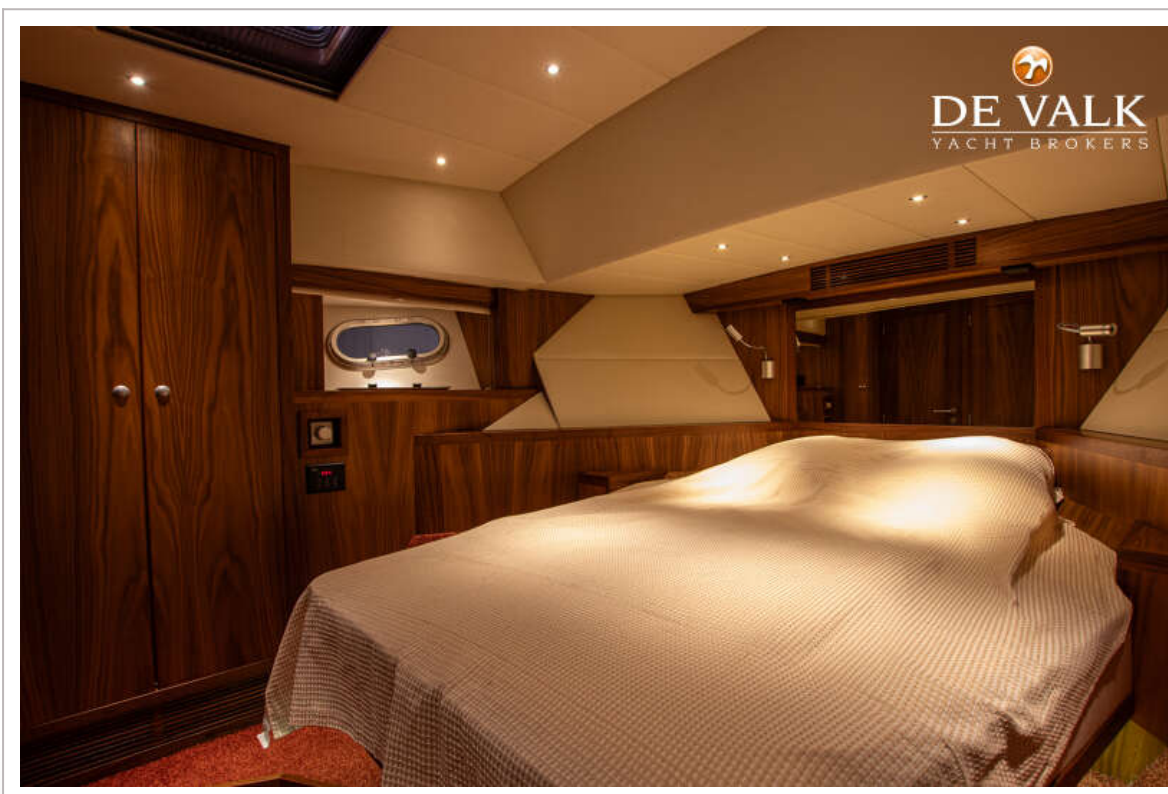
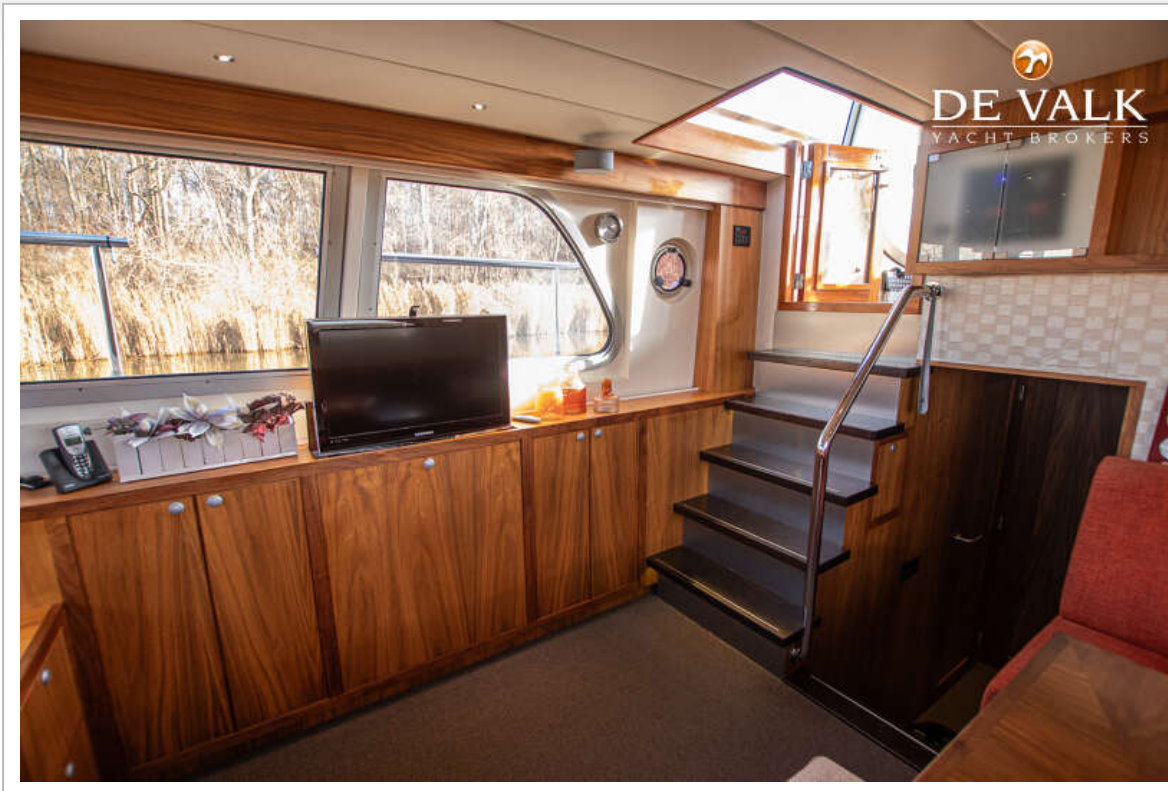
HOLTERMAN 50 CABRIO



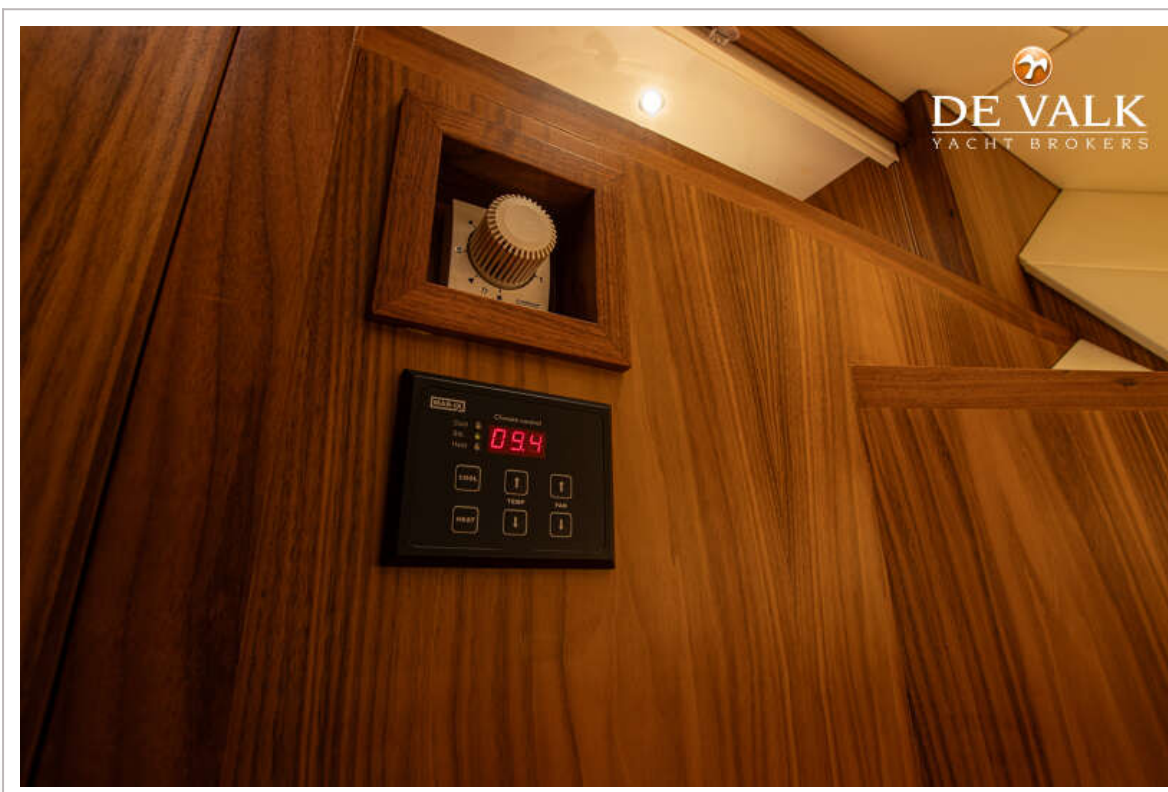
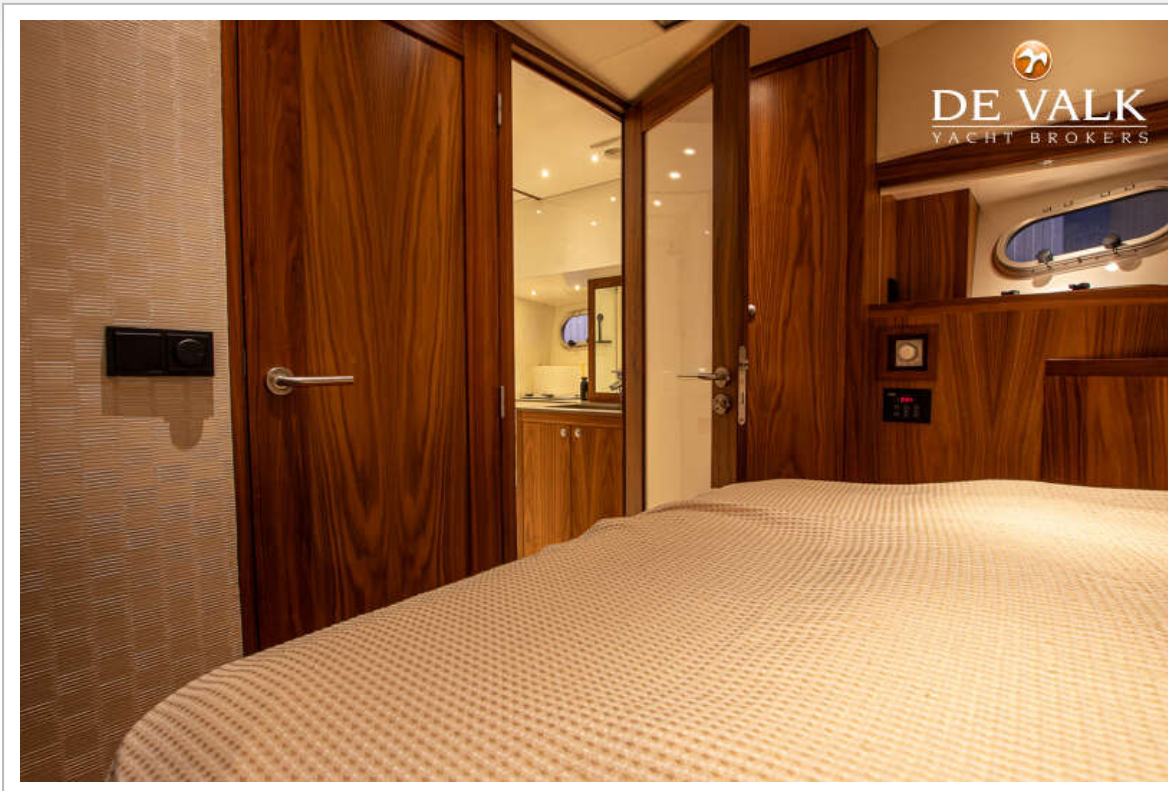
HOLTERMAN 50 CABRIO



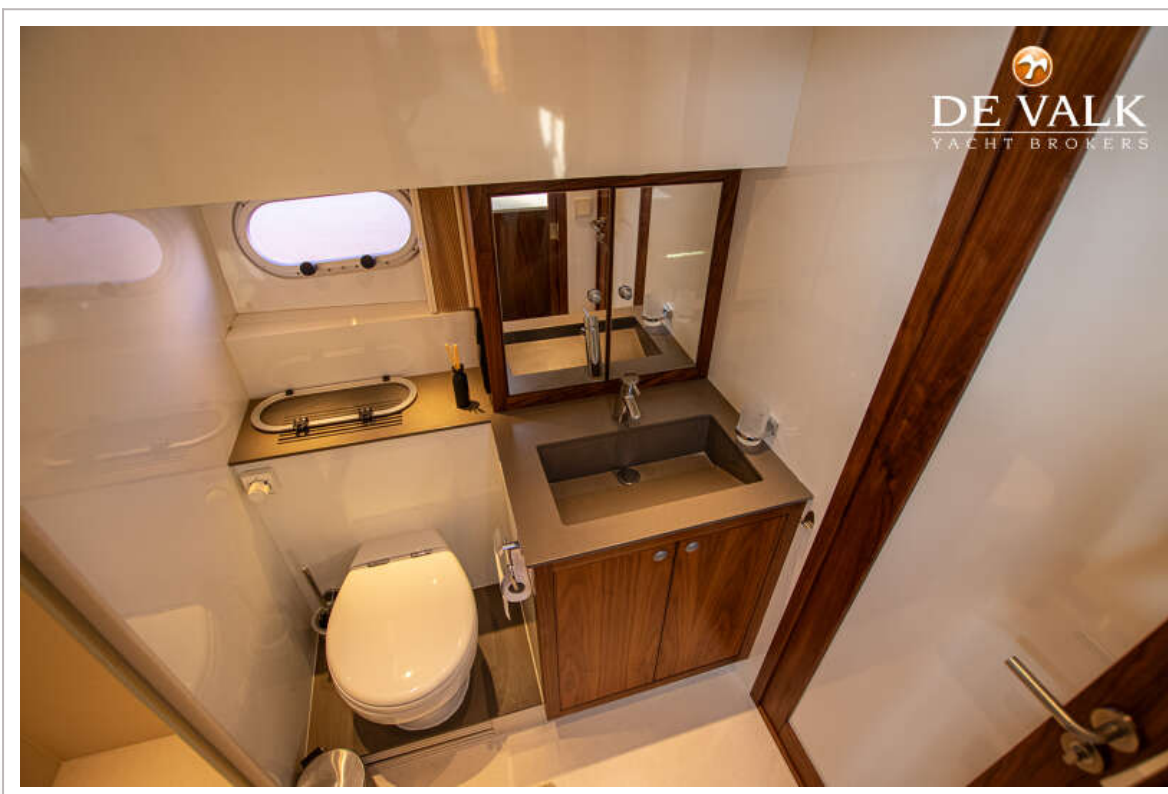
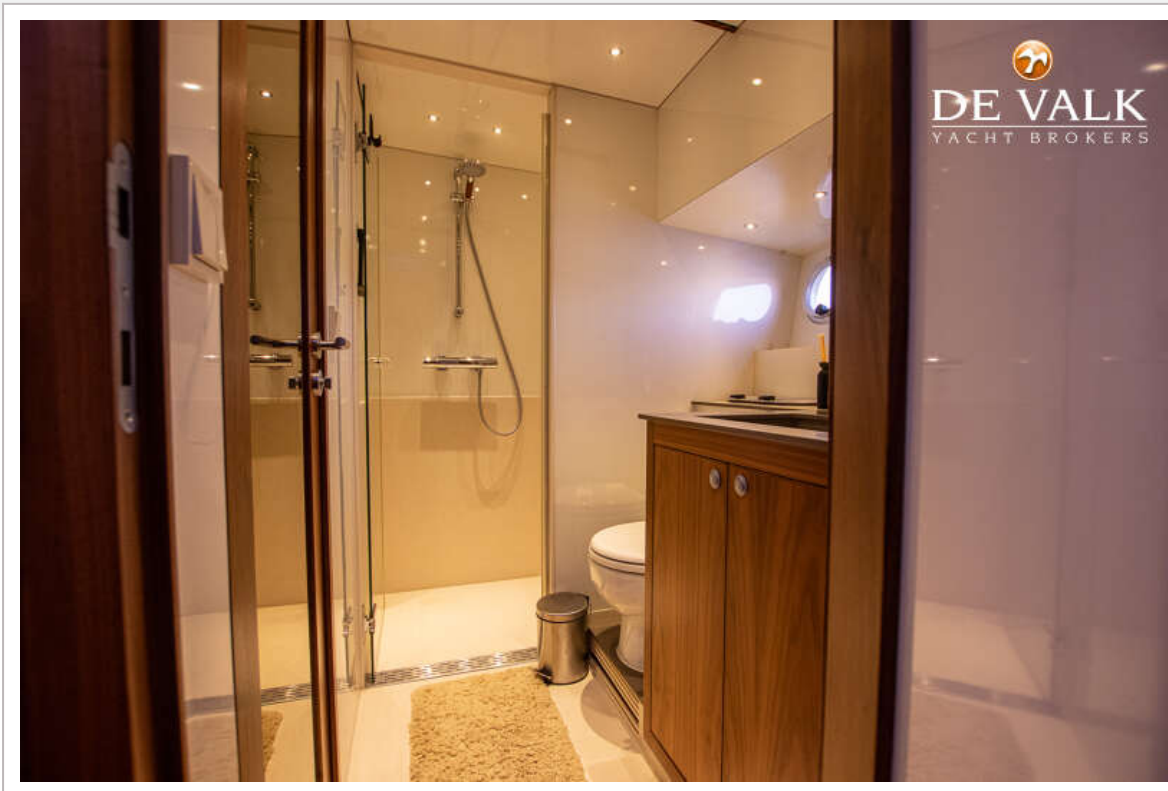
HOLTERMAN 50 CABRIO



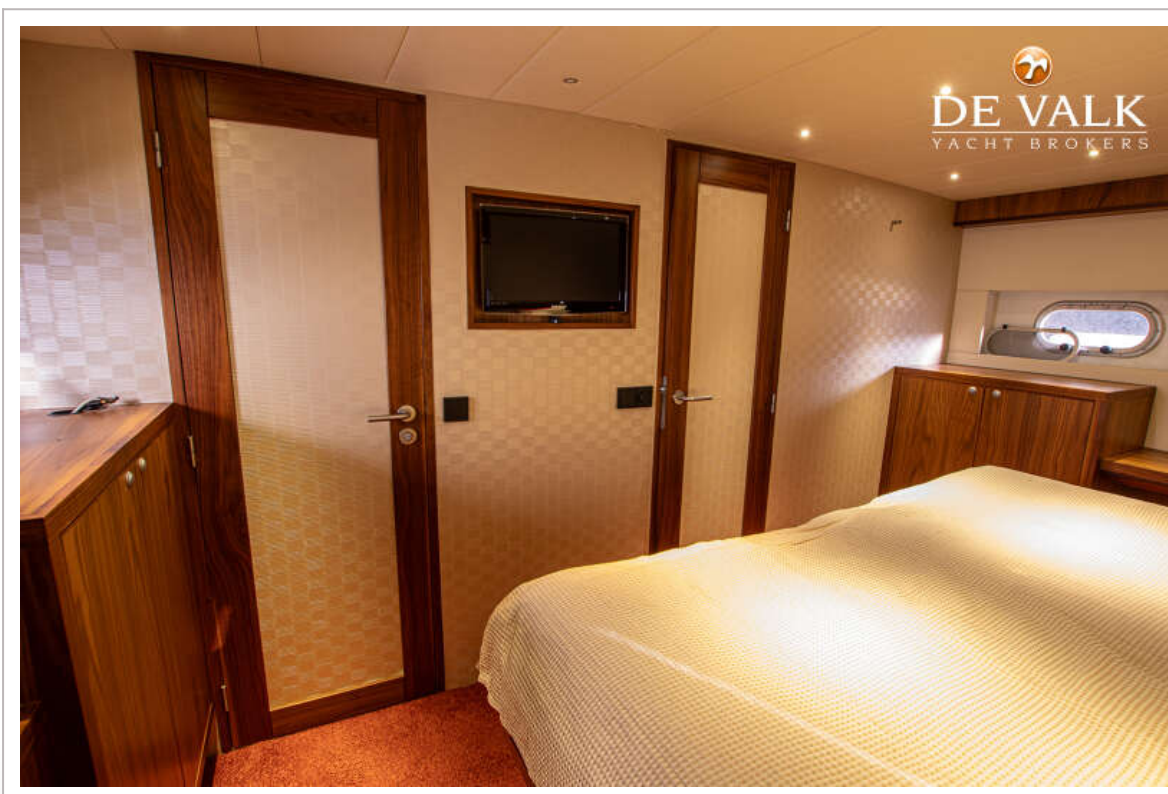
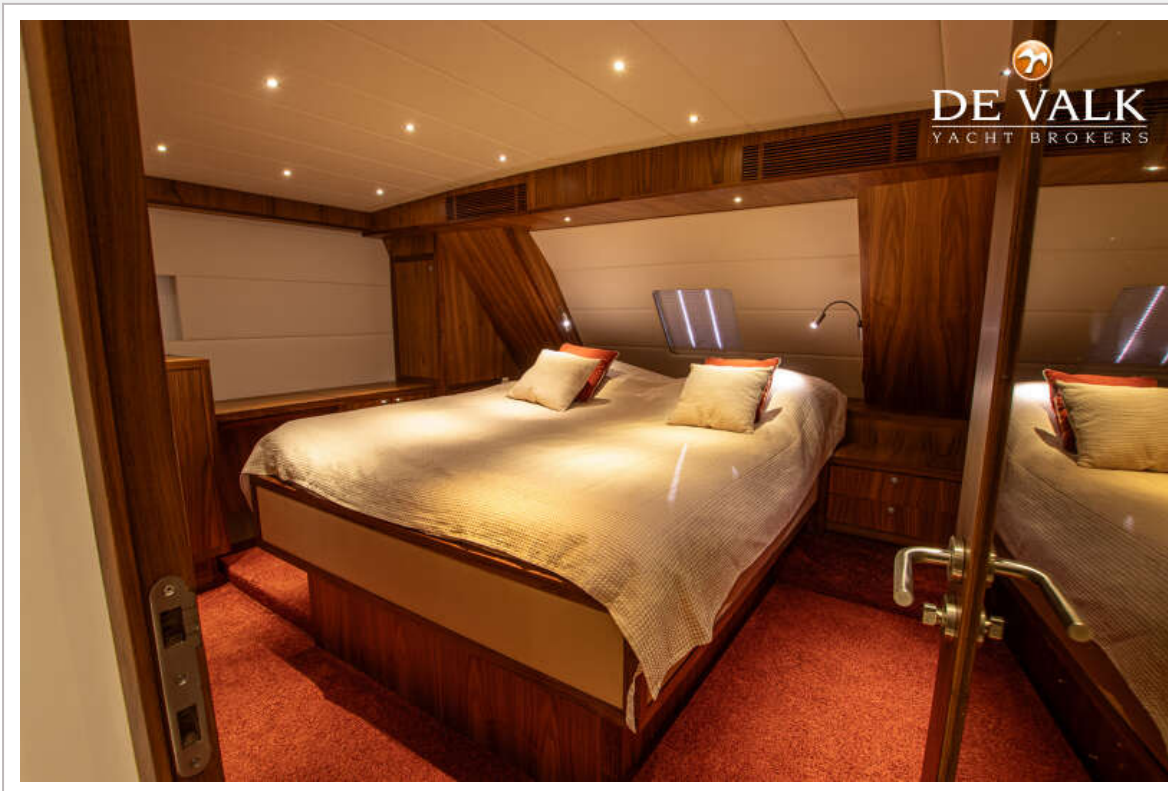
HOLTERMAN 50 CABRIO



HOLTERMAN 50 CABRIO



HOLTERMAN 50 CABRIO



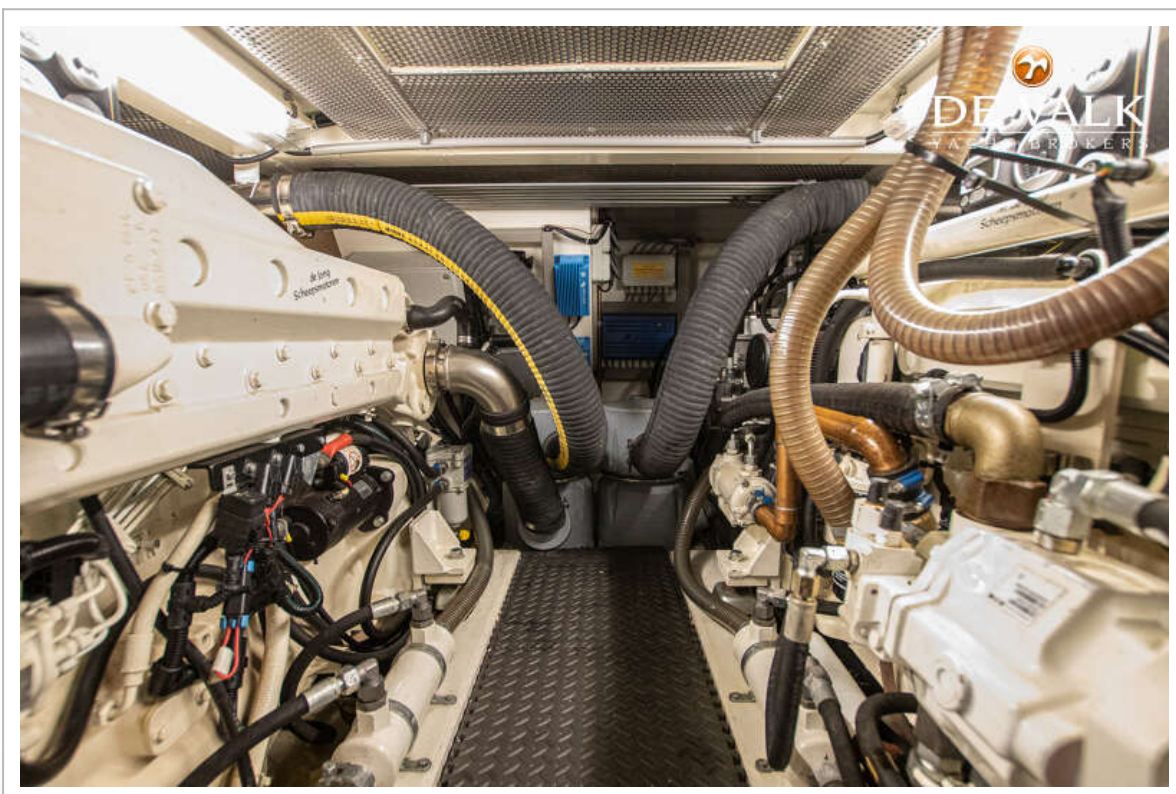
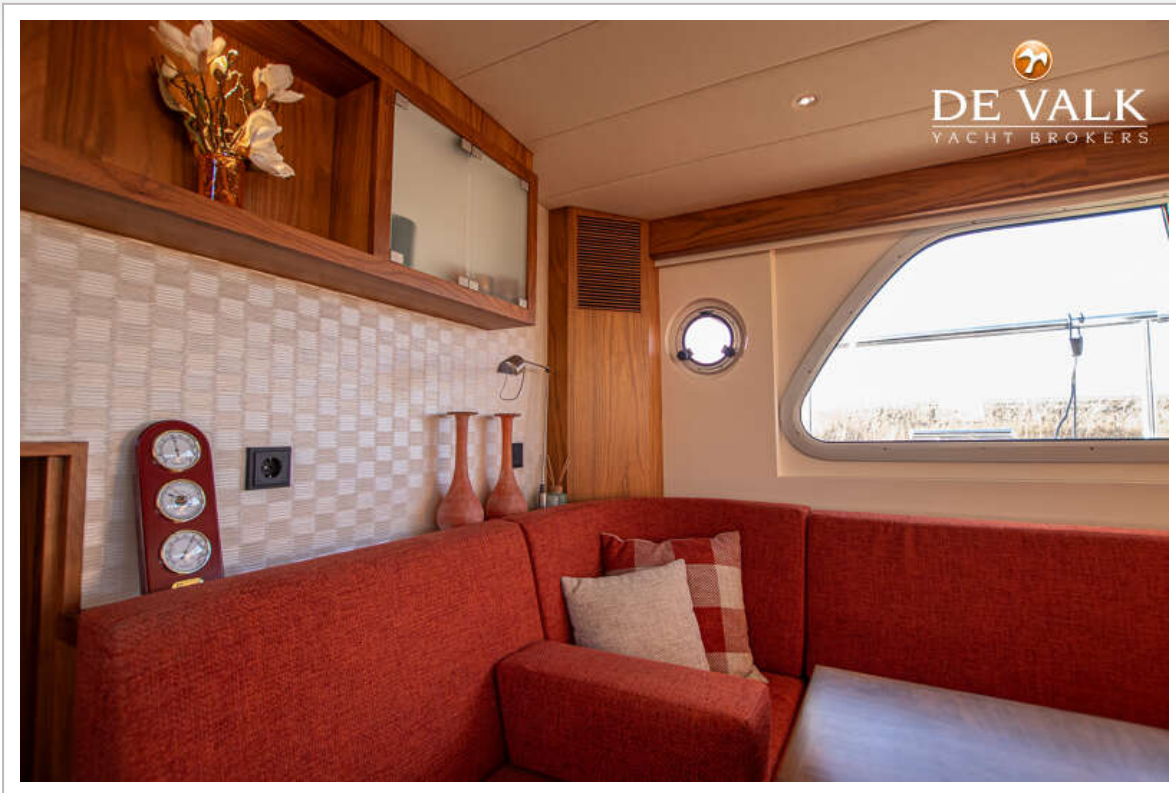
HOLTERMAN 50 CABRIO



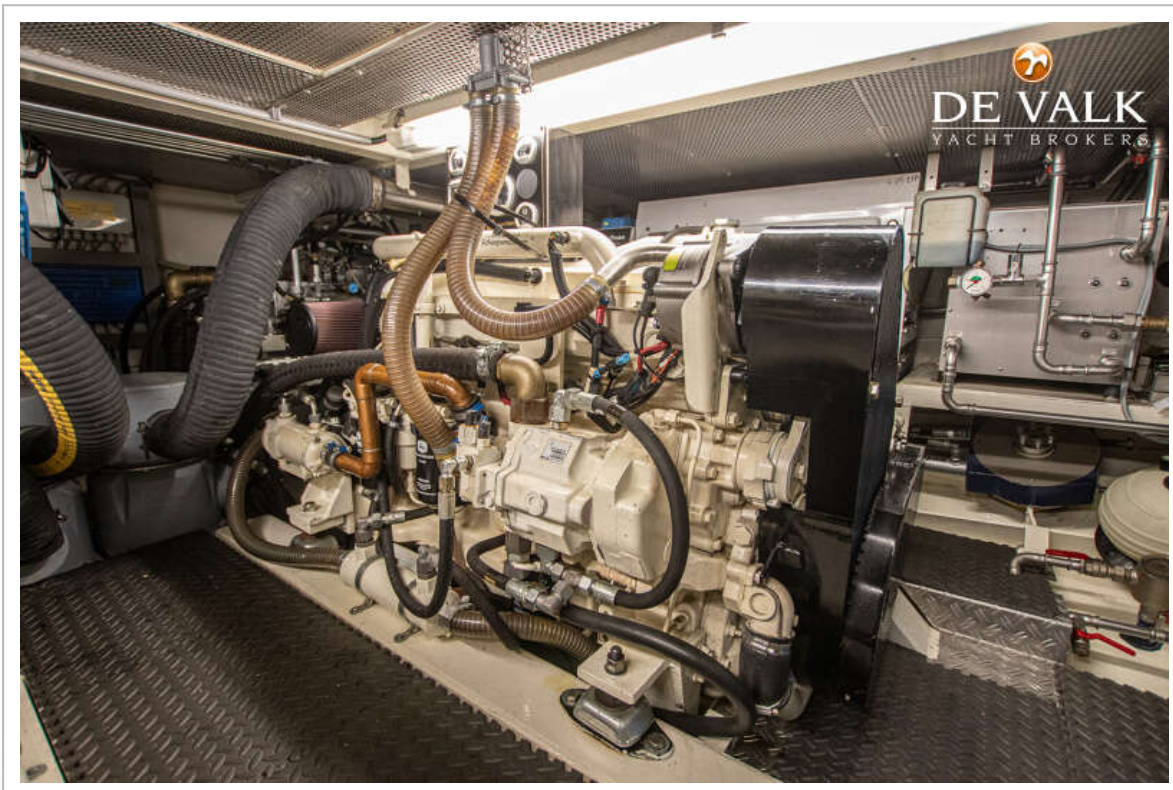
HOLTERMAN 50 CABRIO



HOLTERMAN 50 CABRIO



HOLTERMAN 50 CABRIO



HOLTERMAN 50 CABRIO



HOLTERMAN 50 CABRIO

