



DE VALK
YACHT BROKERS



LUNSTROO SCHOONER



DE VALK
YACHT BROKERS

LUNSTROO SCHOONER

BROKER'S COMMENTS

Dutch built Classic Schooner, designed by Lunstroof. This sturdy sailing yacht is a Lunstroof schooner and represents classic Dutch shipbuilding craftsmanship. It was refitted in 2012 and 2018. The hull was sandblasted and a complete new Awlgrip paint system was applied. Masts refitted and varnished, and new rigging installed. We offer a well balanced sailing yacht combining traditional lines with modern refit quality, making her a reliable and elegant Lunstroof schooner for long-distance cruising and comfortable liveaboard use. A true example of classic Dutch maritime craftsmanship yacht.

Stein Dubbeldam

SPECIFICATIONS

Dimensions	23.05 x 4.87 x 2.30 (m)	Builder	Jachtwerf P. Kompier BV
Built	1996	Cabins	4
Material	Steel	Berths	9
Engine(s)	1 x Ford Lehman 2725E diesel	Hp/Kw	135.00 (hp), 99.22 (kw)
Asking price	€ 275.000 (VAT Paid)	Lying	contact sales office

CONTACT

Sales office	De Valk Hindeloopen B.V.	Telephone	+31 514 52 40 00
Address	Oosterstrand 1 8713 JS Hindeloopen NL	E-mail	hindeloopen@devalk.nl

DISCLAIMER

These particulars are given in good faith as supplied but cannot be guaranteed.



LUNSTROO SCHOONER

GENERAL

Model	LUNSTROO SCHOONER
Type	sailing yacht
LOA (m)	23,05
LWL (m)	18,15
Beam (m)	4,87
Draft (m)	2,30
Year built	1996
Builder	Jachtwerf P. Kompier BV
Country	The Netherlands
Designer	Lunstroo
Displacement (t)	42
Ballast (tonnes)	lead 9,5
Gross tonnage	36
Net tonnage	11
Hull material	steel
Hull colour	white
Hull shape	S-bilged
Superstructure material	steel
Deck material	steel
Deck finish	teak
Cockpit deck finish	teak
Antifouling (year)	2025 Marlin 303
Fuel tank (litre)	1200 ltr.
Freshwater tank (litre)	1500 ltr.
Blackwater tank (litre)	steel 300 ltr.
Wheel steering	hydraulic
Inside helm position	yes

ACCOMMODATION

Cabins	4
---------------	---



LUNSTROO SCHOONER

Berths	9
Interior	mahogany
Floor	teak and holly
Open cockpit	yes
Pilot house/deck saloon	yes
Saloon	The dinette in the saloon was fitted with new upholstery in 2025, and the bench and table were repainted/varnished.
Headroom saloon (m)	2,20
Heating	Needs to be installed
Navigation center	In pilothouse / deck saloon
Chart table	In pilothouse / deck saloon
Aft Cabin	yes
Dinette	yes
Galley	yes
Countertop	Duropol
Sink	stainless steel Double
Cooker	calor gas 3 burner
Oven	And grill
Fridge	1
Hot water system	220V + engine Boiler 60 ltr.
Owners cabin	double bed midship
Bed length (m)	1,95 mtr.
Wardrobe	hanging and drawers
Bathroom	shared midship
Toilet	Rheinstrom
Toilet system	manual
Wash basin	yes
Shower	yes
Guest cabin 1	bunk bed
Bed length (m)	1,95 mtr.
Wardrobe	hanging and shelves
Bathroom	shared



LUNSTROO SCHOONER

Toilet	Planus
Toilet system	electric
Wash basin	yes
Shower	yes
Guest cabin 2	bunk bed + single bed
Bed length (m)	1,95 mtr.
Wardrobe	shelves
Guest cabin 3	double bed + single bed aft cabin
Bed length (m)	1,95
Wardrobe	hanging and drawers
Washing machine/dryer combi	Miele - new 2023

MACHINERY

No of engines	1
Make	Ford Lehman
Type	2725E
HP	135
kW	99.22
Fuel	diesel
Year installed	1994
Year of overhaul	2018
Engine hours	Ca 1000
Drive	shaft
Gearbox	Velvet 3:1
Engine controls	mechanical
Bowthruster	SidePower SE 170/250 TC 12hp new 2019
Propeller blades	3
Electric bilge pump	1x 230V and 6x Jabsco 24V
Bilge alarm	yes
Electrical installation	12 / 24 / 220
Generator	New 2018 Sole diesel 6.6 Ke with silent pack



LUNSTROO SCHOONER

Start battery	2x - new 2023
Service battery	New 2025 4x 220Ah AGM deep cycle batteries divided into two service groups
Generator battery	1x with Victron Bluesmart IP22 12/30 new 2018
Bowthruster battery	2x with charger new 2025
Battery monitor	Two Victron battery monitors with Bluetooth, installed in 2023
Battery charger	Victron Phoenix 24/25 serving one of the two service groups 2025 Bowthruster battery charger Mastervolt
Inverter	Victron 24/12
Battery charger/inverter	Victron MultiPlus 24/3000/70 (new 2024), serving one of the two service groups
Solar panel	Victron MPPT
Insulation transformer	Victron 7 kW, installed in 2018
Extra info	Automatic transfer switch for shore power/generator with corresponding sockets in the engine room for "emergency power," installed in 2018.

NAVIGATION

Compass	Sestrel
Multi control display	New 2020 2x Raymarine i70
Depth sounder	Data from: 2x Raymarine i70
Log	Data from: 2x Raymarine i70
Windset	Data from: 2x Raymarine i70
VHF	Ray63 VHF radio with external GPS antenna and additional handset
Autopilot	Raymarine P70s with EV-100
Radar/GPS/plotter	Raymarine E127 - MFD
Navtex	yes
AIS transponder	Emtrak A100 klasse A new 2019
Navigation lights	LED
Extra info	In 2020, a new Raymarine NMEA 2000 network was installed



LUNSTROO SCHOONER

EQUIPMENT

Boarding ladder	stainless steel custom made 2024
Gangway	yes
Anchor	New 2025 Stainless steel
Anchor chain	New 2025 100 mtr.
Windlass	electrical
Capstan	yes
Davits	steel
Sea railing	yes
Railing side opening gates	yes
Pulpit	yes
Fenders	yes
Mooring lines	yes
TV	yes
Radio	DAB+ radio with Bluetooth
Cockpit speakers	New 2024

RIGGING

Rigging	schooner
Standing rigging	wire
Material mast	wood Oregon Pine
Spreaders	One pair
Mainsail	and foresail
Mainsail cover	fore both sails
Topsail	New needs to be installed
Jib	and flying jib
Self tacking jib installation	For jib and fore sail
Backstay adjuster	yes
Primary sheet winch	1x
Secondary sheet winch	2x
Genoa sheetwinches	2x



LUNSTROO SCHOONER

Halyard winches

Mainmast - 4 winches | foremast - 5 winches

Winchcovers

yes

Extra info

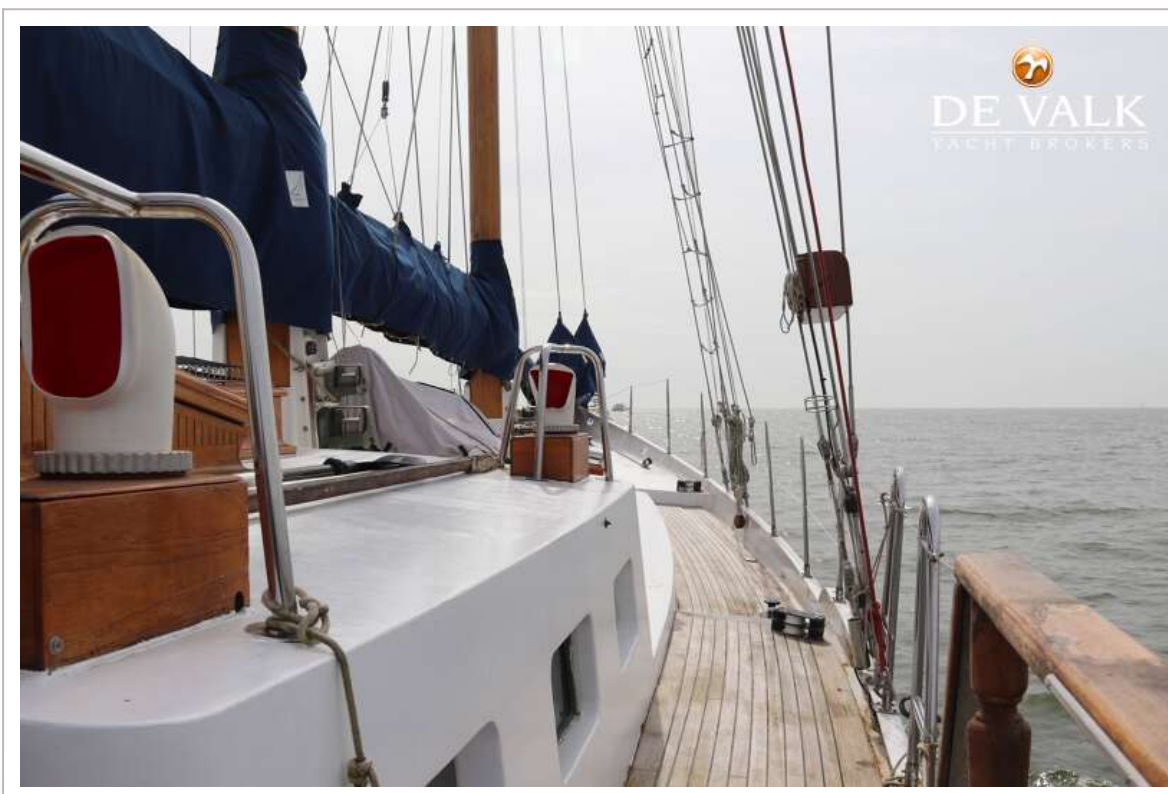
All sails, ventilators, entrances, and the aft guardrail are fitted with new covers | 2023

Extra info

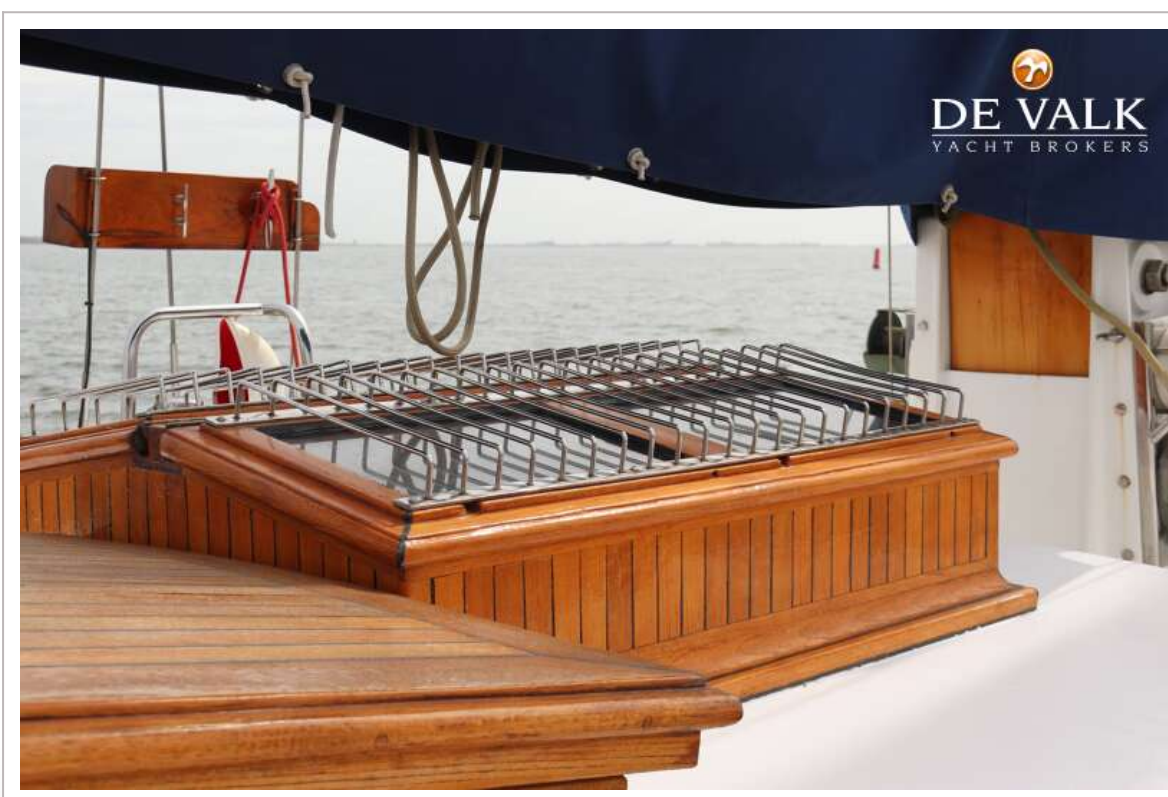
The masts and the bowsprit were removed from the vessel in 2020 and carefully restored and revarnished. During reassembly, the jib stay was renewed



LUNSTROO SCHOONER



LUNSTROO SCHOONER



LUNSTROO SCHOONER



LUNSTROO SCHOONER



LUNSTROO SCHOONER



LUNSTROO SCHOONER



LUNSTROO SCHOONER



LUNSTROO SCHOONER



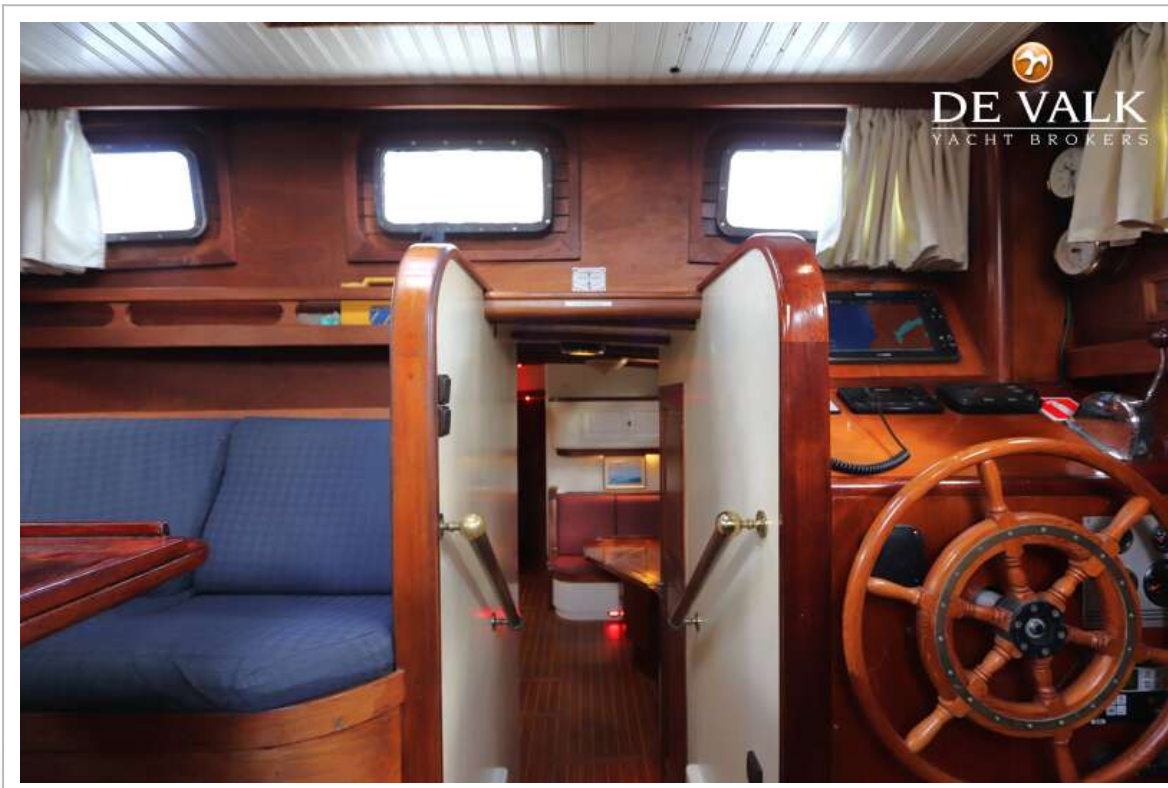
LUNSTROO SCHOONER



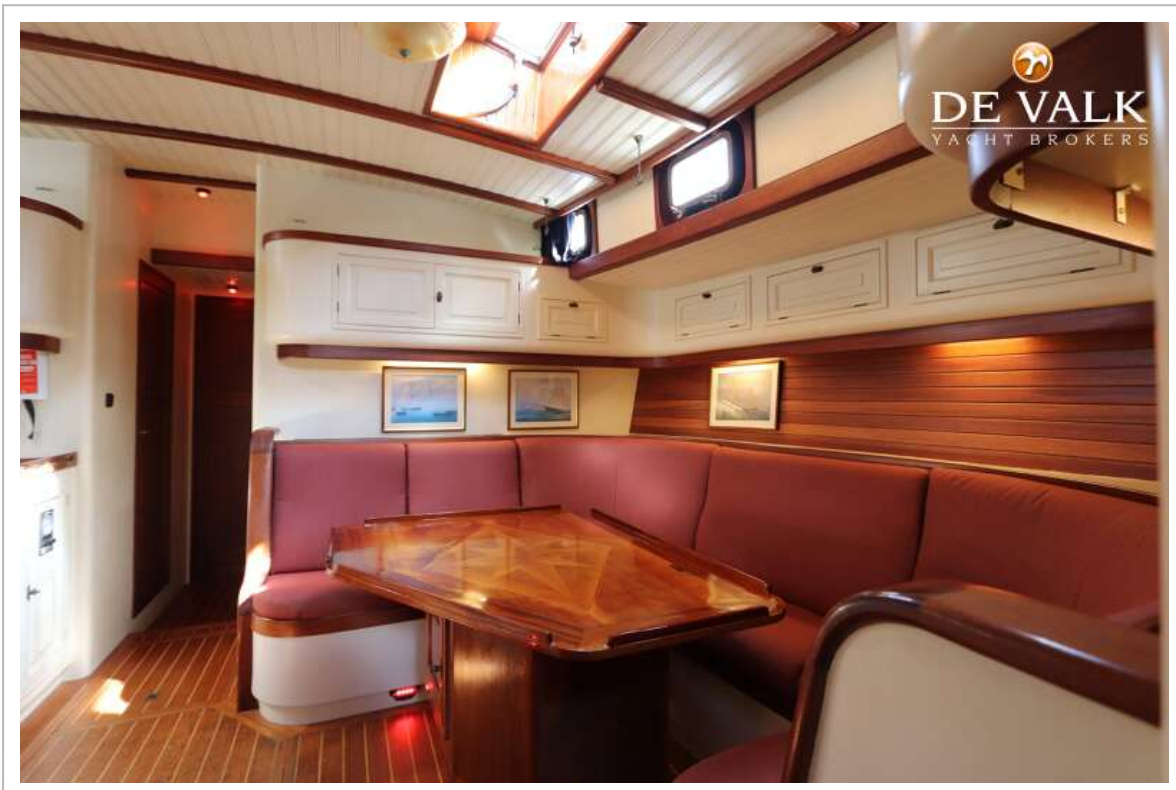
LUNSTROO SCHOONER



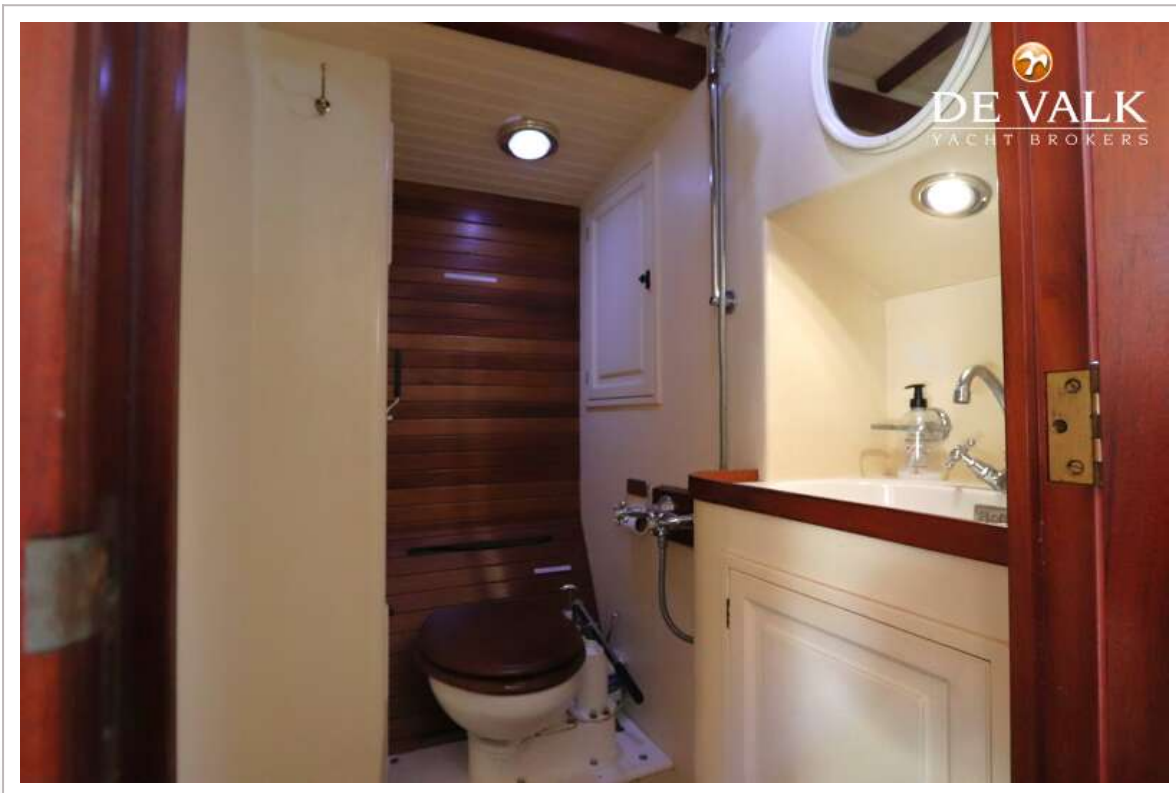
LUNSTROO SCHOONER



LUNSTROO SCHOONER



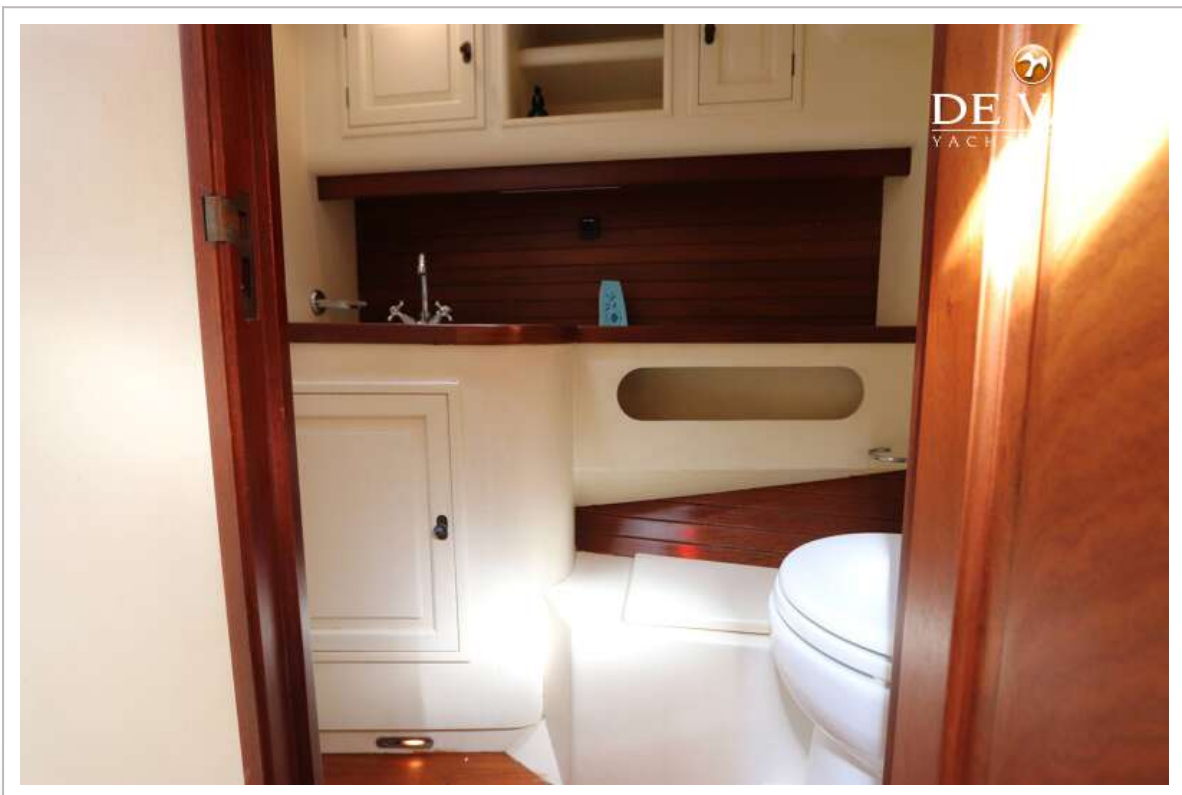
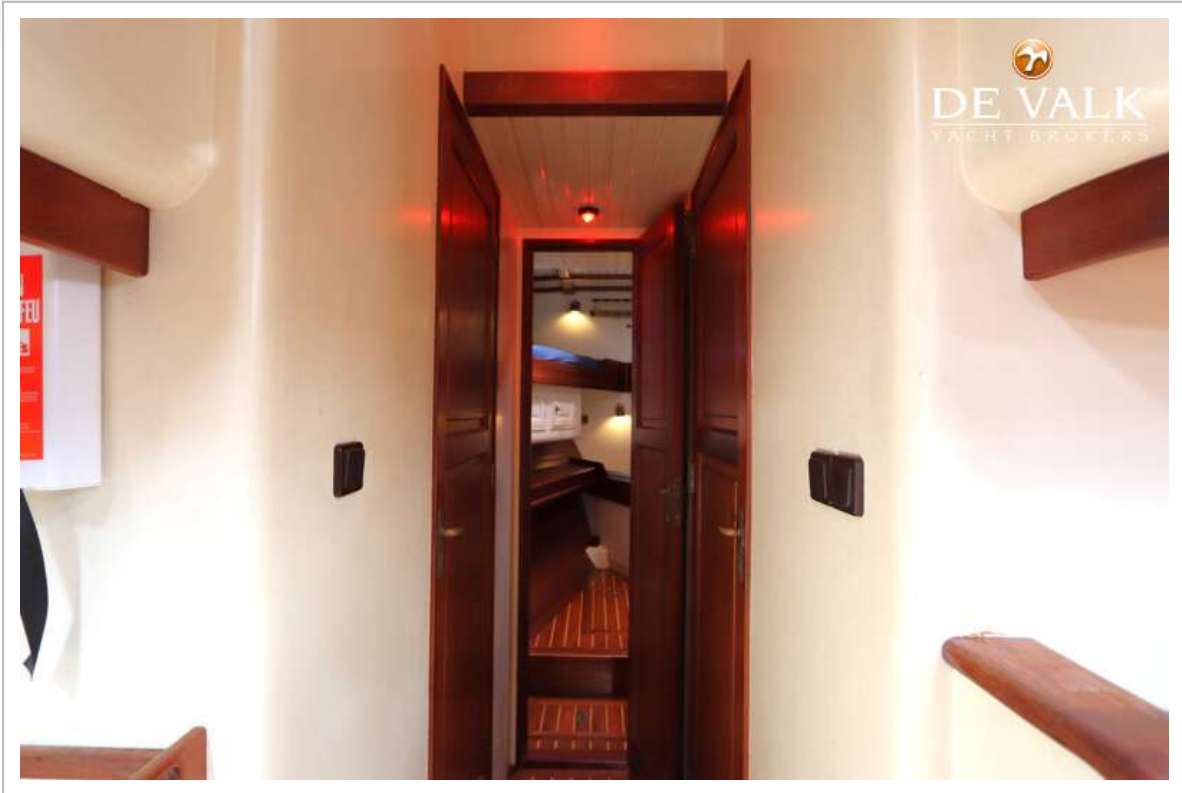
LUNSTROO SCHOONER



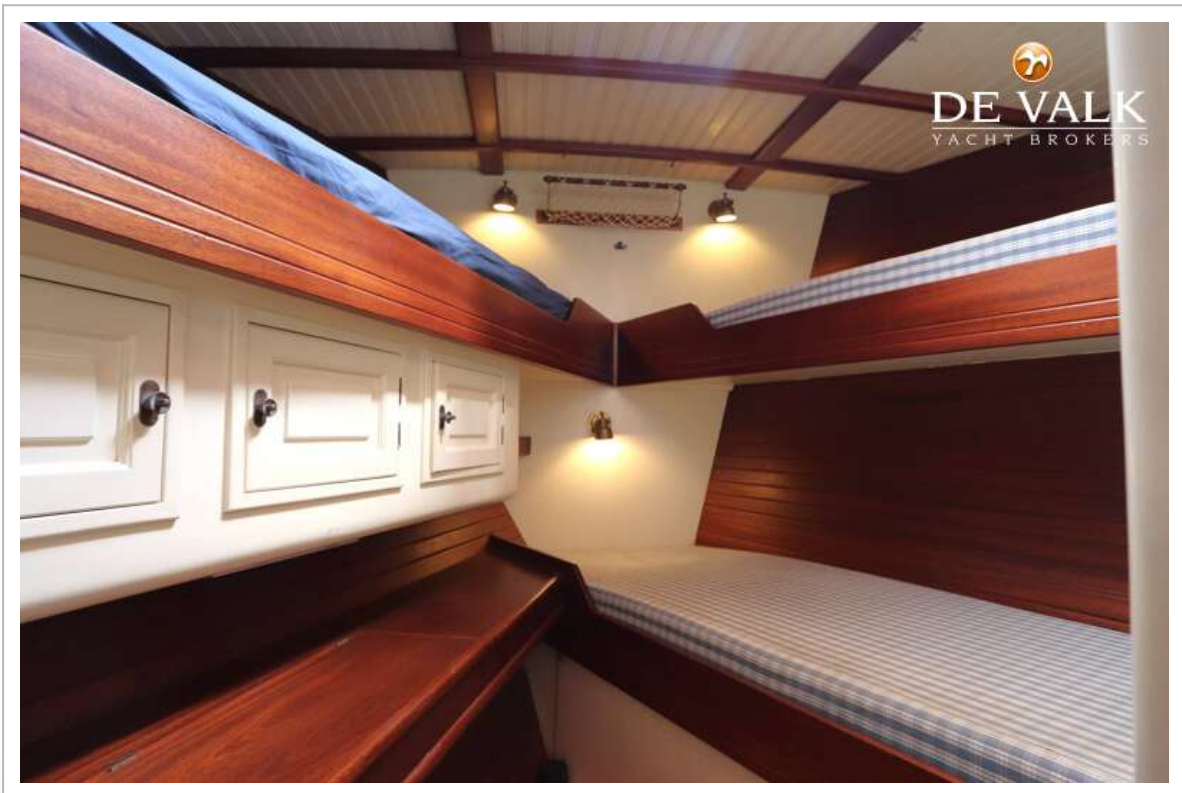
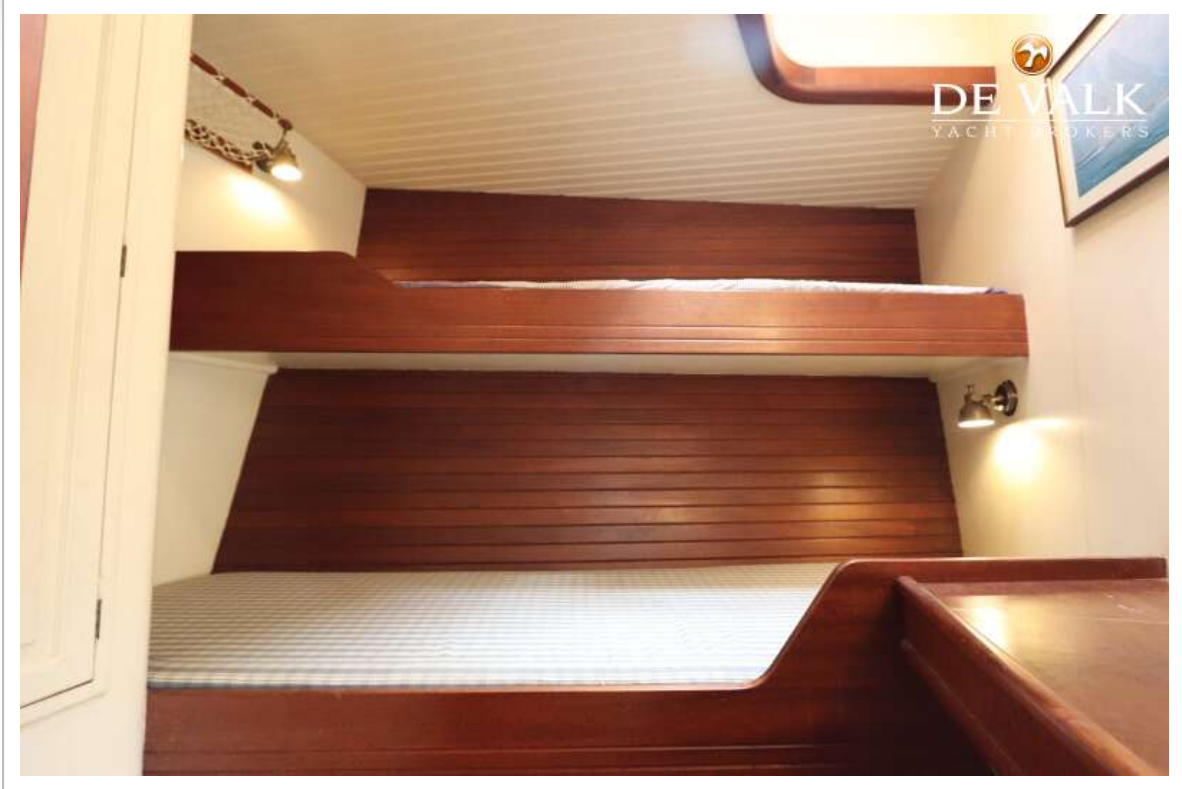
LUNSTROO SCHOONER



LUNSTROO SCHOONER



LUNSTROO SCHOONER



LUNSTROO SCHOONER



LUNSTROO SCHOONER



LUNSTROO SCHOONER

