



DE VALK  
YACHT BROKERS



## BOARNCRUISER 50 RETRO LINE CABRIO



DE VALK  
YACHT BROKERS

# BOARNCRUISER 50 RETRO LINE CABRIO

## BROKER'S COMMENTS

Discover this timeless Boarncruiser 50 Retro Line Cabrio, where luxury, comfort, and character come together. On board, you will enjoy a spacious layout, high-quality craftsmanship, and a stylish interior. The yacht offers exceptional handling; stabilizers and both bow and stern thrusters provide optimal control, stability, and effortless maneuverability in all conditions. The yacht is also equipped with a generator and numerous other luxury features, ensuring that nothing is lacking. Viewing is by appointment only.

*Hielke Peters*

## SPECIFICATIONS

<b>Dimensions</b>	14.95 x 4.80 x 1.25 (m)	<b>Builder</b>	De Boarnstream
<b>Built</b>	2010	<b>Cabins</b>	3
<b>Material</b>	Steel	<b>Berths</b>	6
<b>Engine(s)</b>	2 x Perkins M225TI diesel	<b>Hp/Kw</b>	2 x 148.00 (hp), 108.93 (kw)
<b>Asking price</b>	€ 645.000 (VAT Paid)	<b>Lying</b>	contact Loosdrecht

## CONTACT

<b>Sales office</b>	De Valk Loosdrecht B.V.	<b>Telephone</b>	+31 (0)35 582 90 30
<b>Address</b>	't Breukeleveense Meentje 6 1231LM Loosdrecht / Wijdmeren NL	<b>E-mail</b>	loosdrecht@devalk.nl

## DISCLAIMER

These particulars are given in good faith as supplied but cannot be guaranteed.



# BOARNCRUISER 50 RETRO LINE CABRIO

## GENERAL

<b>Model</b>	BOARNCRUISER 50 RETRO LINE CABRIO
<b>Type</b>	motor yacht
<b>LOA (m)</b>	14,95
<b>Beam (m)</b>	4,80
<b>Draft (m)</b>	1,25
<b>Air draft (m)</b>	4,80
<b>Air draft min (m)</b>	3,42
<b>Headroom (m)</b>	2,00
<b>Year built</b>	2010
<b>Launched</b>	2011
<b>Builder</b>	De Boarnstream
<b>Country</b>	The Netherlands
<b>Displacement (t)</b>	32
<b>CE norm</b>	B
<b>Hull material</b>	steel
<b>Hull colour</b>	Oyster White
<b>Hull shape</b>	round-bilged
<b>Superstructure material</b>	steel
<b>Rubbing strake</b>	stainless steel
<b>Deck material</b>	steel
<b>Deck finish</b>	synthetic teak
<b>Cockpit deck finish</b>	synthetic teak
<b>Window frame</b>	stainless steel
<b>Window material</b>	double glazing
<b>Deckhatch</b>	1x
<b>Portholes</b>	stainless steel
<b>Insulation</b>	foam
<b>Radar arch</b>	collapsible Hydraulic
<b>Fuel tank (litre)</b>	aluminium 850
<b>Fuel tank 2 (litre)</b>	aluminium 850



# BOARNCRUISER 50 RETRO LINE CABRIO

Level indicator (fuel tank)	yes
Freshwater tank (litre)	aluminium 1200
Level indicator (freshwater)	yes
Blackwater tank (litre)	400
Level indicator (blackwater)	yes
Blackwater tank extraction	deck extraction + pump
Wheel steering	hydraulic
Outside helm position	hydraulic
More info on paintwork	Upper and lower hull repainted (2025) Silic One hull treatment, high-quality antifouling (2025)

## ACCOMMODATION

Cabins	3
Berths	6
Interior	mahogany
Layout	yes
Floor	carpet
Aft deck	yes
Saloon	yes
Sliding roof	electric
Heating	central heating 14kW Kabola
Air-conditioning	single cycle airco Marvair Marine airco
Aft Cabin	yes
Dinette	yes
Opening door to cockpit	yes
Galley	yes
Countertop	corian
Sink	stainless steel
Cooker	ceramic 4 Burner Bosch
Oven	yes
Microwave	yes



# BOARNCRUISER 50 RETRO LINE CABRIO

Fridge	218L
Freezer	yes
Hot water system	on central heating
Water pressure system	electrical Pressure booster system instead of water pump (2026)
Dishwasher	Bosch
Owners cabin	double bed
Bed length (m)	2,00 +/-
Wardrobe	hanging/drawers/shelves
Bathroom	en suite
Toilet	en suite
Toilet system	electric Tecma
Wash basin	in the bathroom
Shower	en suite
Guest cabin 1	v-bed
Bed length (m)	2,00 +/-
Wardrobe	hanging and shelves
Bathroom	separate
Toilet	separate
Toilet system	electric Tecma
Wash basin	in the bathroom
Shower	separate
Guest cabin 2	bunk bed
Bed length (m)	2,00 +/-
Washing machine/dryer combi	yes
Central vacuum cleaner	yes
Wet bar	yes
Extra info	Two professional drain pumps for shower water (2023)
Extra info	New fridge-freezer combo (2024)

## MACHINERY

No of engines	2
---------------	---



# BOARNCRUISER 50 RETRO LINE CABRIO

<b>Make</b>	Perkins
<b>Type</b>	M225TI
<b>HP</b>	148
<b>kW</b>	108.93
<b>Fuel</b>	diesel
<b>Maximum speed (kn)</b>	8
<b>Cruising speed (kn)</b>	10
<b>Consumption (l/hr)</b>	11
<b>Engine hours</b>	2850
<b>Engine cooling system</b>	freshwater heat exchanger
<b>Drive</b>	shaft
<b>Engine controls</b>	electrical Hydronautica
<b>Gearbox</b>	hydraulic
<b>Bowthruster</b>	hydraulic
<b>Sternthruster</b>	hydraulic
<b>Exhaust</b>	watercooled
<b>Thrust bearing</b>	yes
<b>Propeller type</b>	fixed
<b>Propeller shaft material</b>	stainless steel
<b>Shaft lubrication</b>	water
<b>Electric bilge pump</b>	3X
<b>Electrical installation</b>	24V/220V
<b>Generator</b>	wet exhaust 9,4 kW
<b>Batteries</b>	yes
<b>Start battery</b>	New 2025 2X 130Ah
<b>Service battery</b>	Complete battery bank, 8 Victron Gel batteries (2026) 8X 225Ah
<b>Generator battery</b>	New 2025 1X
<b>Battery charger/inverter</b>	24V/4000W/120A
<b>Shorepower</b>	with cable
<b>Stabilizers</b>	fin Hydroaulisch Naiad Multisea 2
<b>Extra info</b>	Electronic remote control for bow and stern thrusters (2023)
<b>Extra info</b>	Dual separation filter for diesel fuel supply (2023)



# BOARNCRUISER 50 RETRO LINE CABRIO

## Extra info

Engine hoses preventively replaced (2026)

## NAVIGATION

Electric compass	Raymarine ST70
Depth sounder/log	Raymarine ST70
VHF	ICOM
Autopilot	Raymarine ST70 incl. Rate Gyro and remote
Rudder angle indicator	Raymarine ST70
Radar	Raymarine 4 kw digitale radarradome
Plotter/GPS	Raymarine E140 wide touchscreen
AIS transceiver	yes
Navigation lights	yes
Searchlight	yes

## EQUIPMENT

Fixed windscreen	yes
Bimini	New convertible top (2024) Complete cockpit cover to replace Bimini (2024)
Cockpit cushions	yes
Cockpit table	yes
Cockpit chairs	yes
Bathing platform	yes
Boarding ladder	stainless steel
Transom door	Both sides
Deck shower	Hot and cold water
Anchor	45 kg
Anchor chain	+/- 40 meter
Windlass	electrical With remote (1500W/12V)
Deck wash	2X
Sea railing	stainless steel
Grab rail (superstructure)	stainless steel



# BOARNCRUISER 50 RETRO LINE CABRIO

<b>Railing side opening gates</b>	Both sides
<b>Wiper</b>	3x Exalto
<b>Horn</b>	electric
<b>Fenders</b>	yes
<b>Mooring lines</b>	yes
<b>TV</b>	2X
<b>TV receiver</b>	KVH
<b>Radio</b>	Steering: Sony Stereo Owners cabin: JVC stereo Salon: Bose
<b>Surround Sound System</b>	Bose
<b>Cockpit speakers</b>	yes
<b>Speakers in salon</b>	Bose
<b>Clock - barometer</b>	yes



# BOARNCRUISER 50 RETRO LINE CABRIO



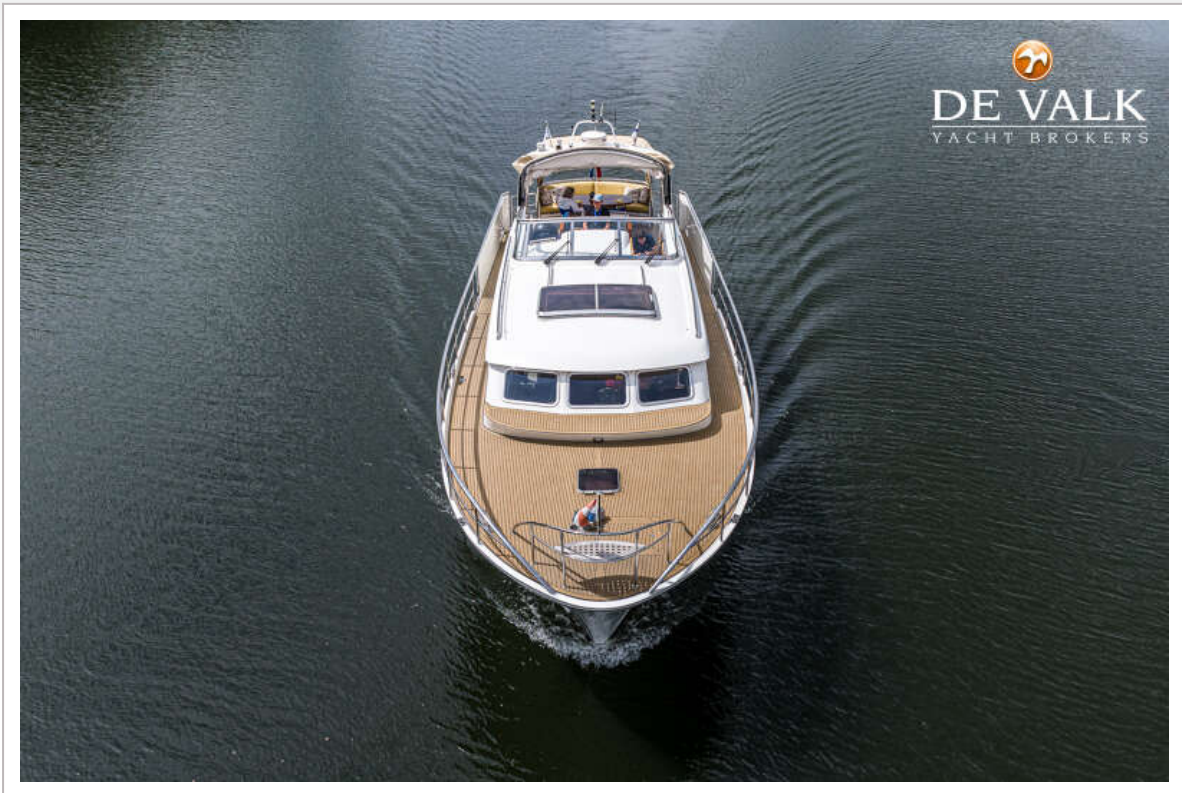
# BOARNCRUISER 50 RETRO LINE CABRIO



# BOARNCRUISER 50 RETRO LINE CABRIO



# BOARNCRUISER 50 RETRO LINE CABRIO



# BOARNCRUISER 50 RETRO LINE CABRIO



# BOARNCRUISER 50 RETRO LINE CABRIO



# BOARNCRUISER 50 RETRO LINE CABRIO



# BOARNCRUISER 50 RETRO LINE CABRIO



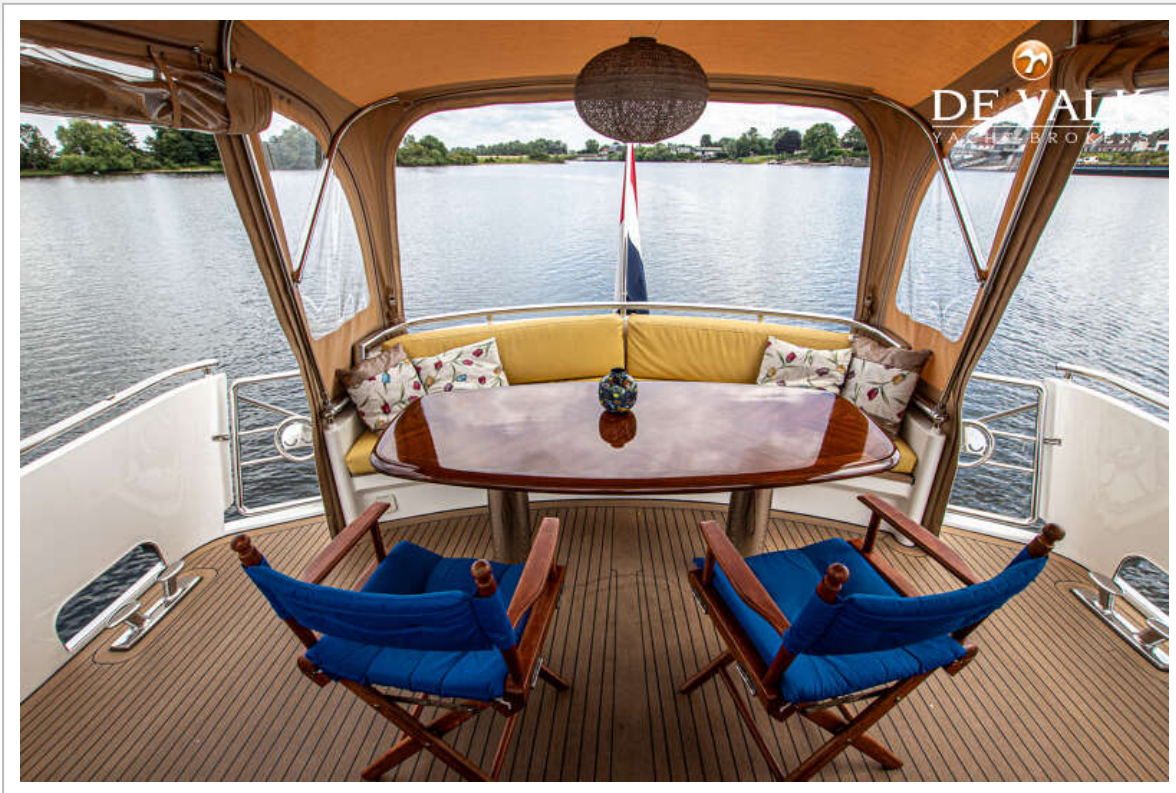
# BOARNCRUISER 50 RETRO LINE CABRIO



# BOARNCRUISER 50 RETRO LINE CABRIO



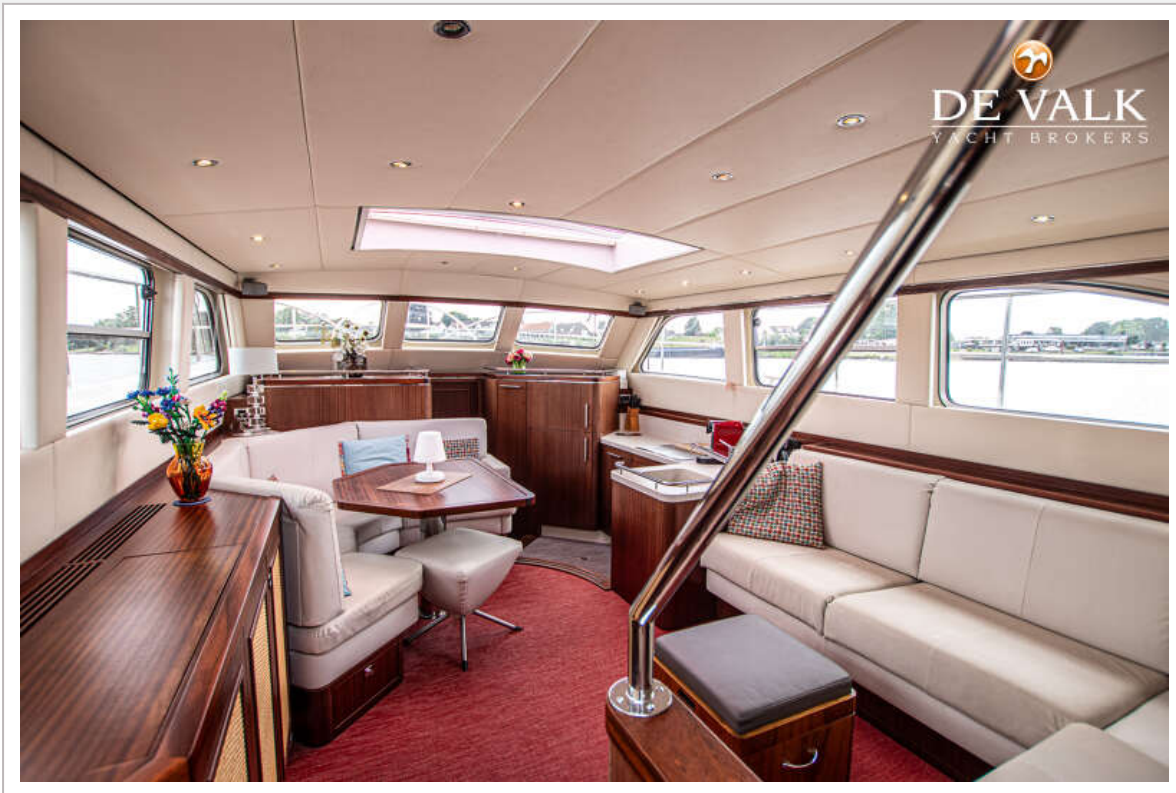
# BOARNCRUISER 50 RETRO LINE CABRIO



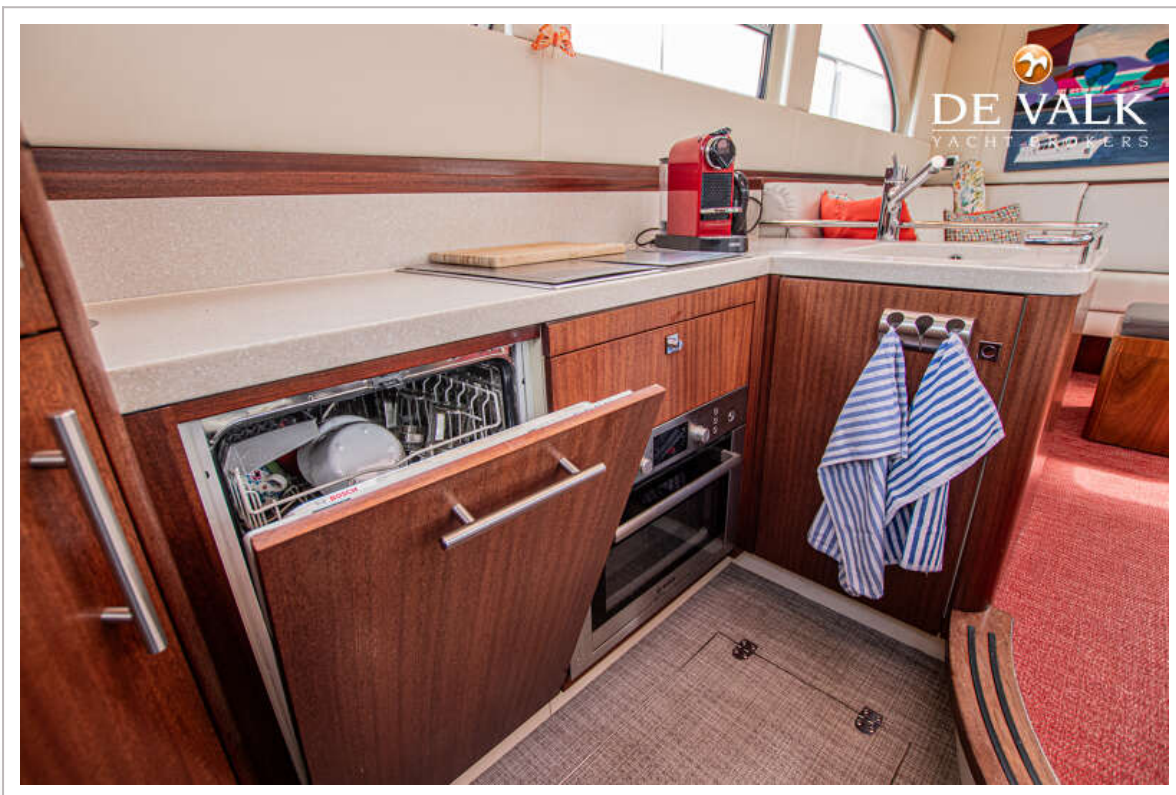
# BOARNCRUISER 50 RETRO LINE CABRIO



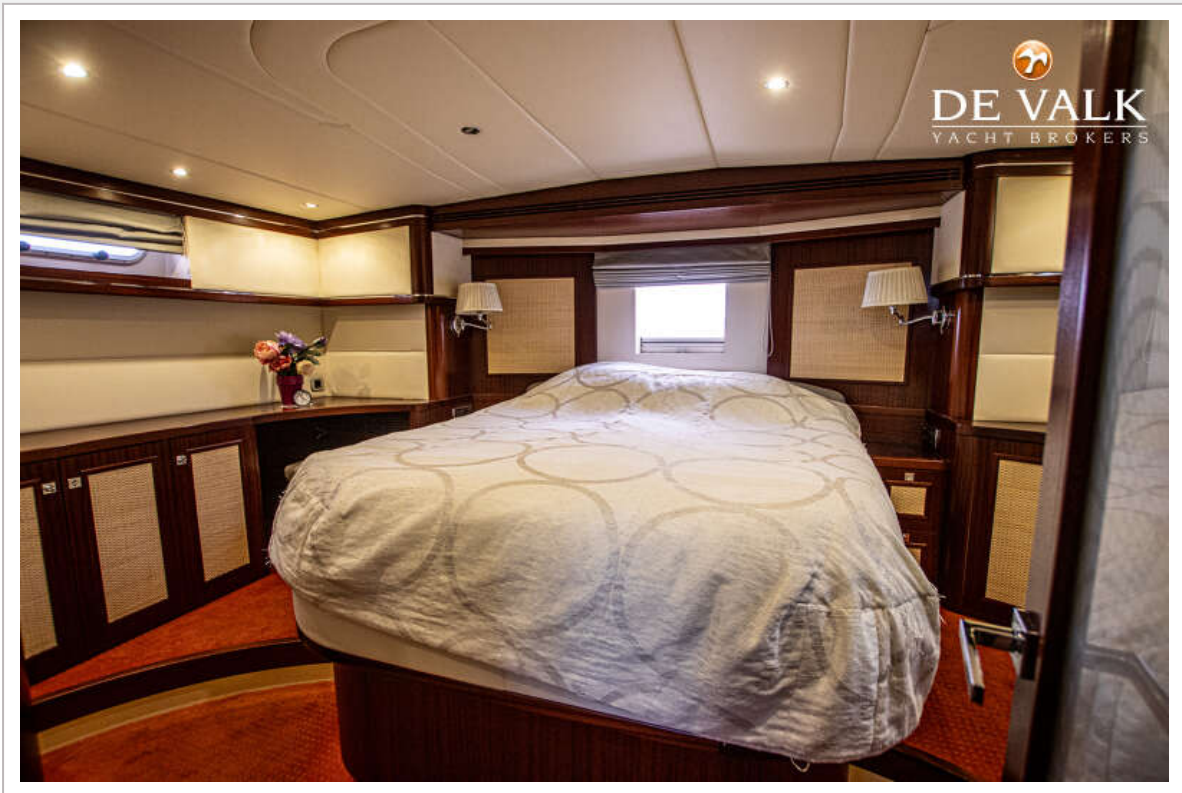
# BOARNCRUISER 50 RETRO LINE CABRIO



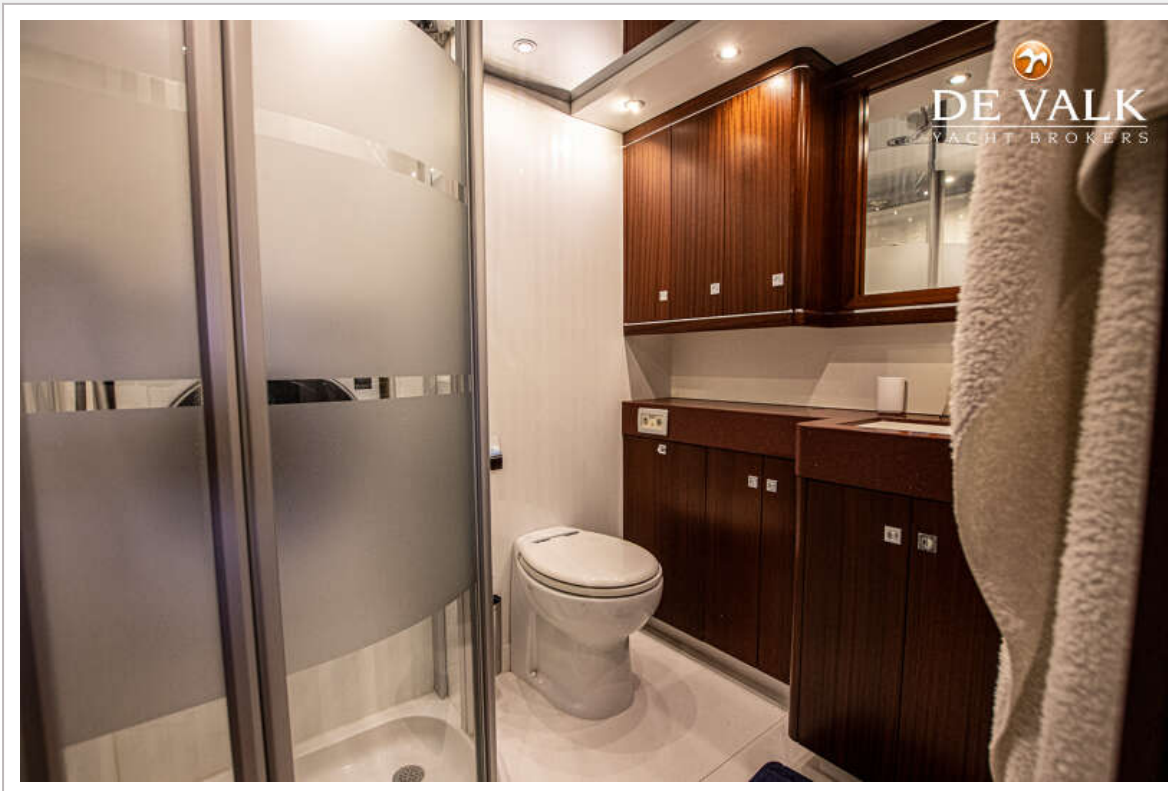
# BOARNCRUISER 50 RETRO LINE CABRIO



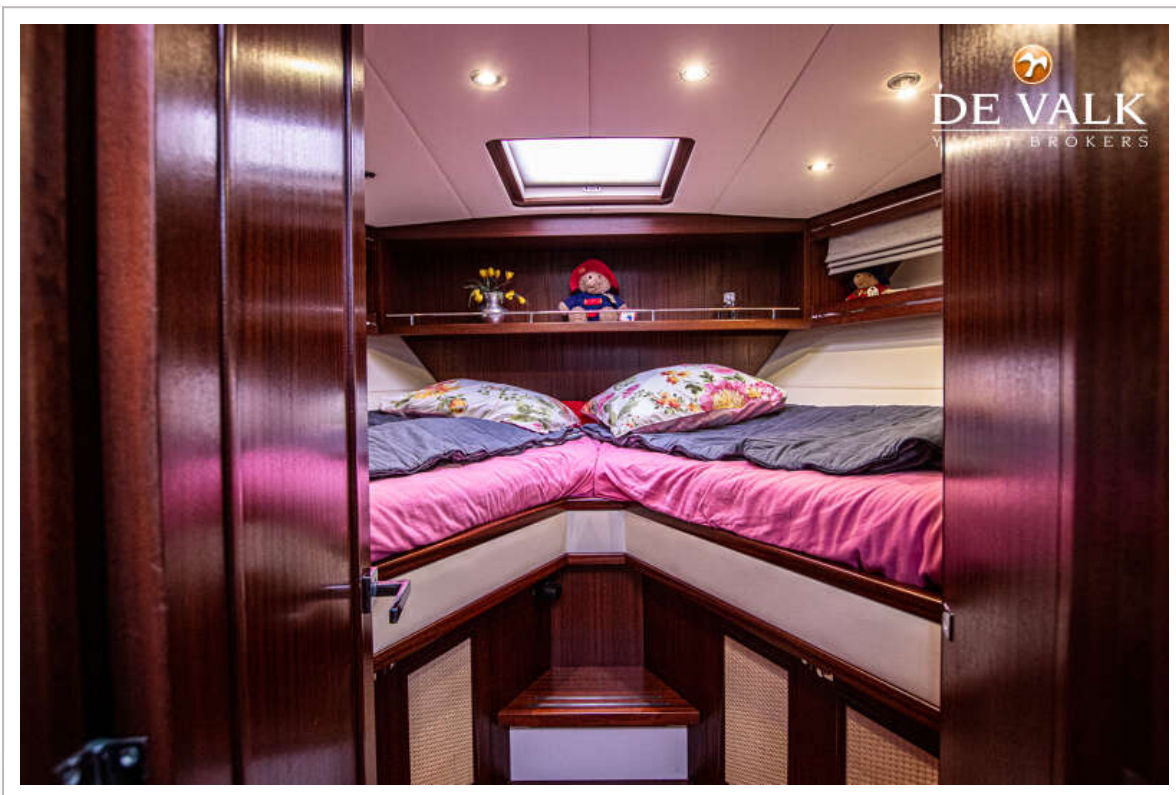
# BOARNCRUISER 50 RETRO LINE CABRIO



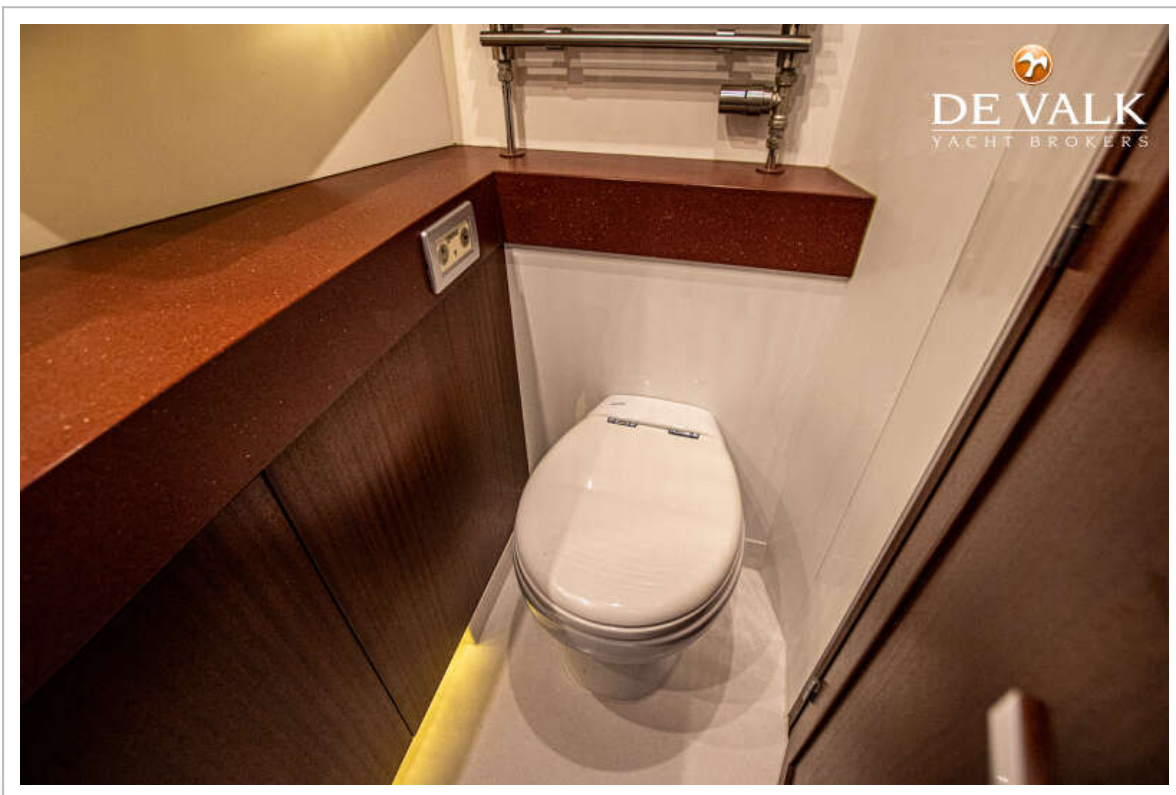
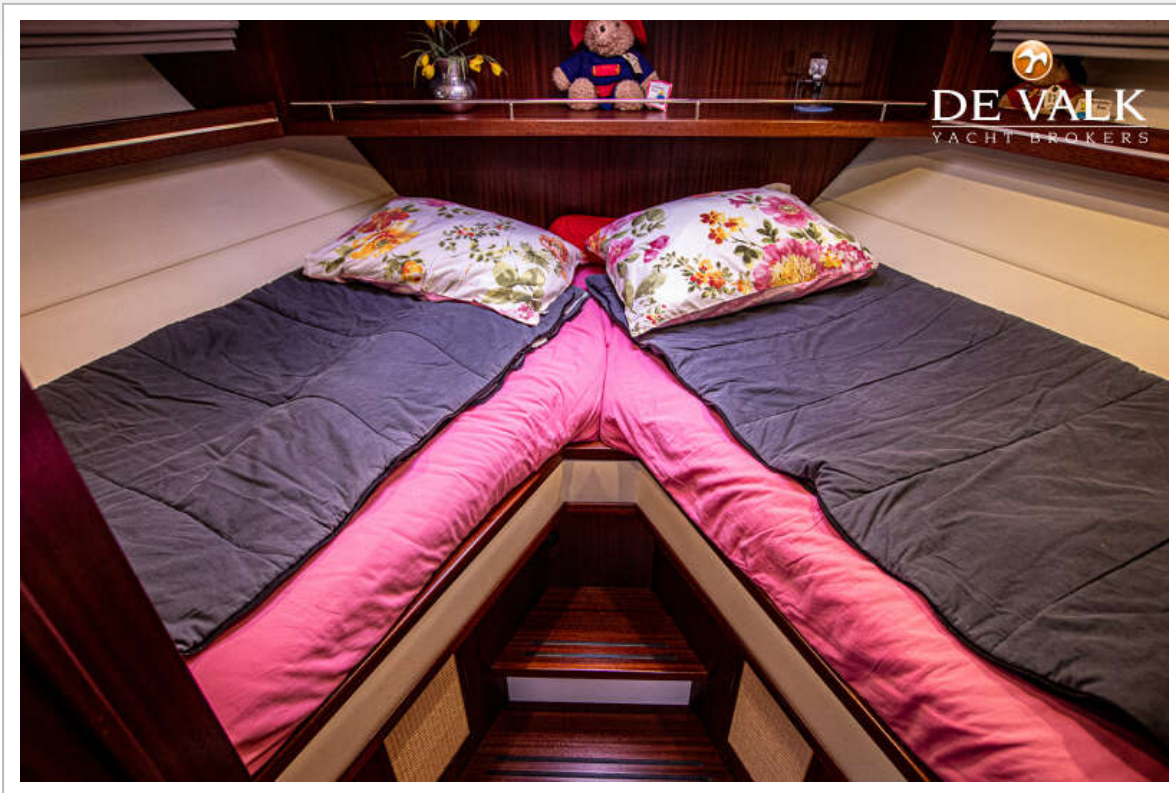
# BOARNCRUISER 50 RETRO LINE CABRIO



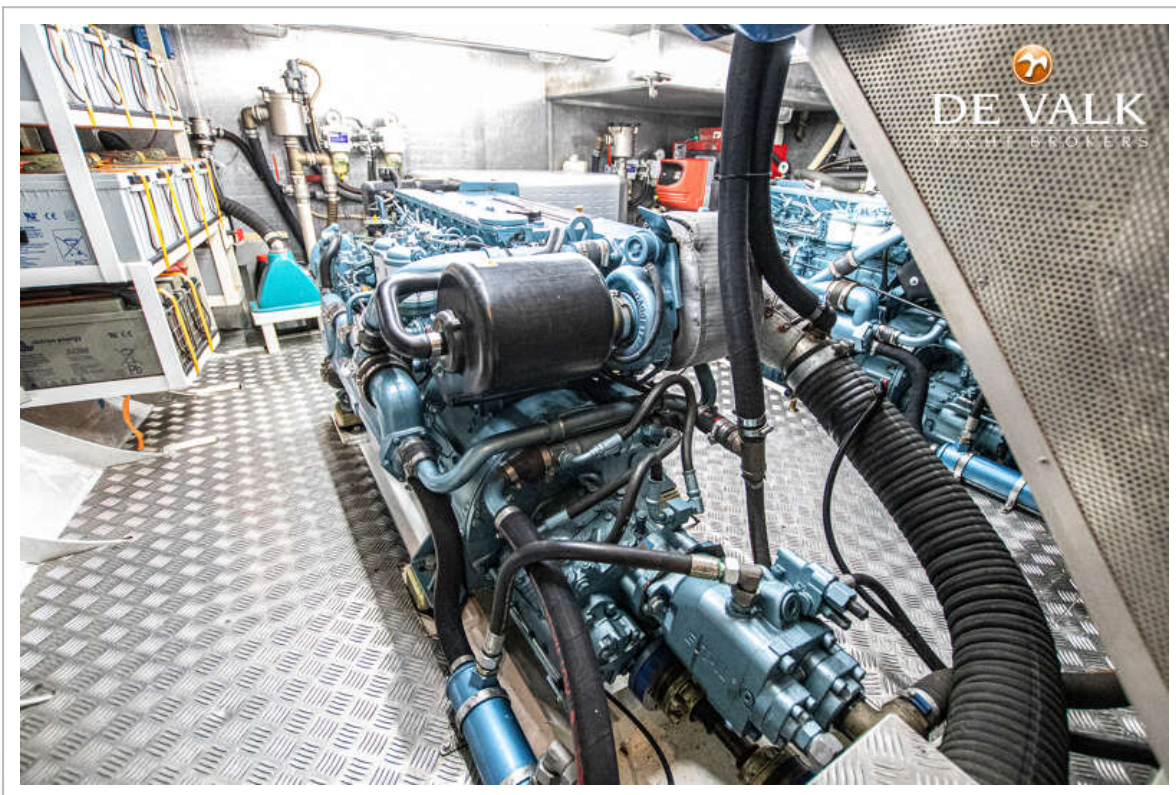
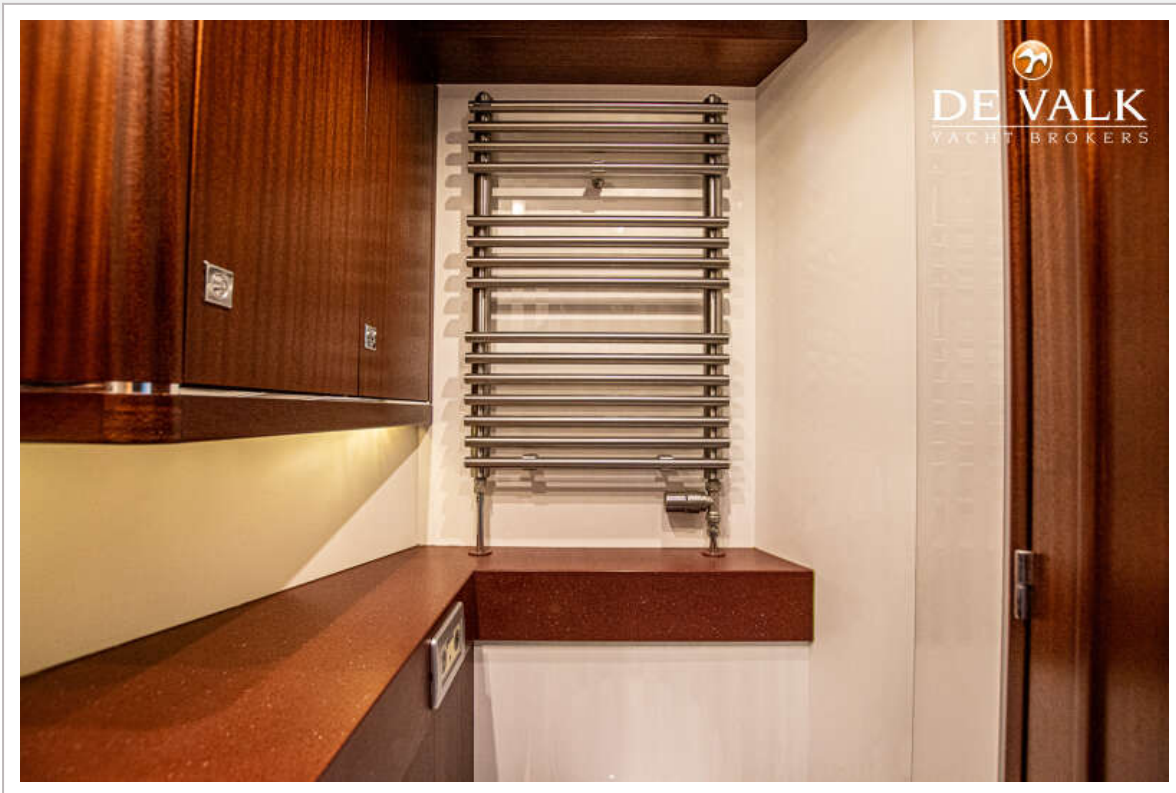
# BOARNCRUISER 50 RETRO LINE CABRIO



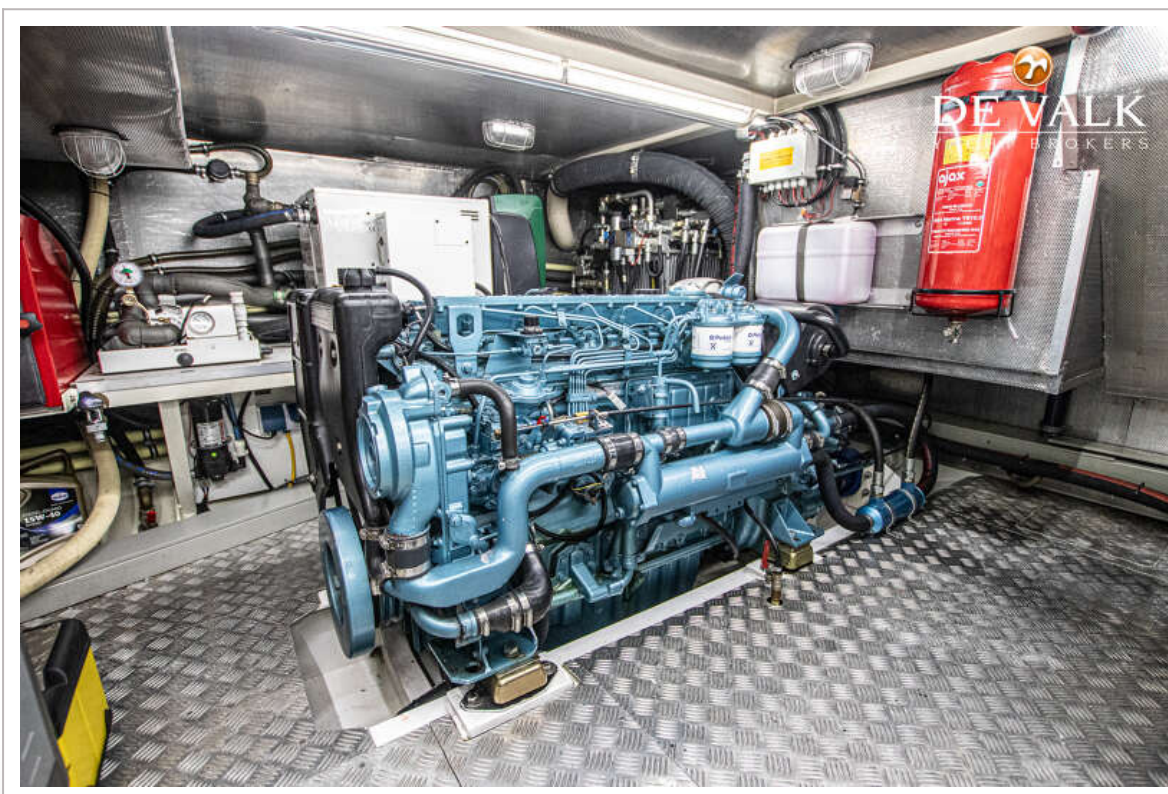
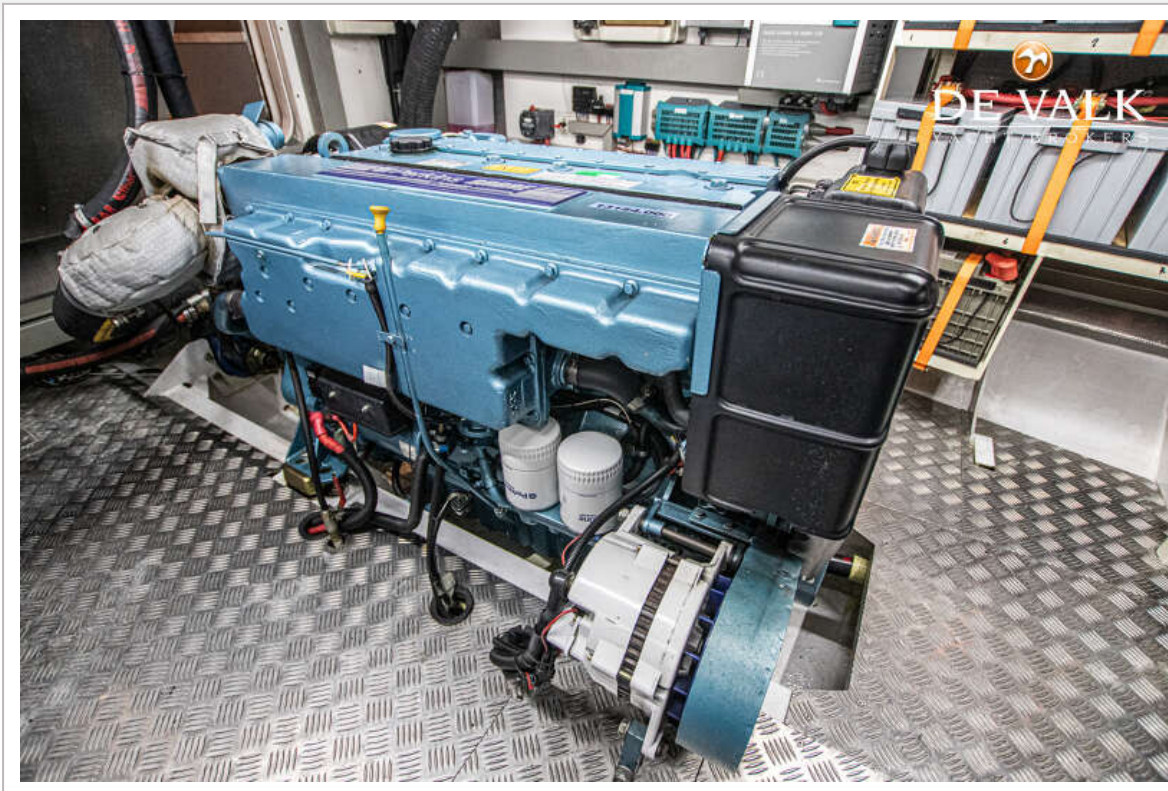
# BOARNCRUISER 50 RETRO LINE CABRIO



# BOARNCRUISER 50 RETRO LINE CABRIO



# BOARNCRUISER 50 RETRO LINE CABRIO



# BOARNCRUISER 50 RETRO LINE CABRIO



