



DE VALK
YACHT BROKERS



LUXE MOTOR 24.95



DE VALK
YACHT BROKERS

LUXE MOTOR 24.95

BROKER'S COMMENTS

Magnificent Luxe Motor 24.95 "Lucky Jane", built in 2024 by SRF in Harlingen. Presented in immaculate, as-new condition and finished with a refined, high-end interior featuring marble surfaces, an elegant formal dining lounge, a spacious owner's suite with private bathroom, and a VIP guest suite with its own en-suite. Equipped with bow and stern thrusters, front and aft spud poles, an auto-lift in the forepeak, integrated lighting automation and a modern hybrid propulsion system. A rare opportunity to acquire a truly luxurious, state-of-the-art Dutch barge of exceptional craftsmanship.

Jochem Heijermans

SPECIFICATIONS

Dimensions	24.95 x 4.92 x 1.20 (m)	Builder	SRF HARLINGEN
Built	2025	Cabins	2
Material	Steel	Berths	4
Engine(s)	1 x Iveco N67 ENT M45.16 diesel	Hp/Kw	170.00 (hp), 125.12 (kw)
Asking price	on request (VAT Paid)	Lying	elsewhere / Not at sales office

CONTACT

Sales office	De Valk Belgium	Telephone	+32 586 80 218
Address	1401 PT Nieuwpoort BE	E-mail	belgium@devalk.nl

DISCLAIMER

These particulars are given in good faith as supplied but cannot be guaranteed.



LUXE MOTOR 24.95

GENERAL

Model	LUXE MOTOR 24.95
Type	motor yacht
LOA (m)	24,95
Beam (m)	4,92
Draft (m)	1,20
Air draft (m)	3,40
Headroom (m)	2,00
Year built	2025
Builder	SRF HARLINGEN
Country	The Netherlands
Designer	Gaastmeer Design
Displacement (t)	85
Hull material	steel
Hull colour	black
Hull thickness (mm)	8
Hull shape	flat bottom
Bilge keels	yes
Superstructure material	steel
Superstructure (mm)	6
Rubbing strake	steel
Deck material	steel
Deck finish	paint
Superstructure deck finish	paint
Cockpit deck finish	synthetic teak
Window frame	mahogany
Window material	double glazing
Portholes	steel
Insulation	foam
Mast can be lowered	manual
Fuel tank (litre)	steel 2x 1500 white diesel



LUXE MOTOR 24.95

Fuel tank 2 (litre)	steel 2x 1500 red diesel
Level indicator (daytank)	yes
Freshwater tank (litre)	stainless steel 3000
Blackwater tank (litre)	stainless steel 3000
Blackwater tank extraction	pump
Wheel steering	hydraulic Remote control
More info on paintwork	Two component paint system

ACCOMMODATION

Cabins	2
Berths	4
Interior	High-end custom build
Floor	woodprint Moduleo PVC
Aft deck	yes
Pilot house	yes
Saloon	yes
Heating	floor heating Post Marine Heating
Aft Cabin	yes
Dinette	yes
Opening door to aft deck	yes
Galley	yes
Countertop	marble
Cooker	induction BORA
Oven	1x Miele steam oven
Microwave/oven combi	1x Miele
Fridge	Miele Knock2Open
Freezer	yes
Wine cooler	LIEBHERR
Hot water system	on central heating
Water pressure system	electrical
Dishwasher	yes



LUXE MOTOR 24.95

Owners cabin	double bed
Wardrobe	hanging/drawers/shelves
Bathroom	en suite
Toilet	en suite
Toilet system	electric
Wash basin	in the bathroom
Shower	en suite
Bath tub	en suite
Guest cabin 1	double bed
Wardrobe	hanging/drawers/shelves
Bathroom	en suite
Toilet	en suite
Toilet system	electric
Wash basin	in the bathroom
Shower	en suite
Washing machine	Miele
Dryer	Miele
Extra info	Integrated lighting automation

MACHINERY

No of engines	1
Make	Iveco
Type	N67 ENT M45.16
HP	170
kW	125.12
Fuel	diesel
Year installed	2024
Engine cooling system	hopper cooling Blokland
Drive	shaft
Engine controls	electrical
Gearbox	hydraulic



LUXE MOTOR 24.95

Bowthruster	hydraulic Quick
Sternthruster	hydraulic Quick
Electric hybride drive	Fischer Panda 48V
Exhaust	dry
Propeller type	fixed
Propeller blades	5
Shaft lubrication	grease Grease lubricator
Electric bilge pump	4x
Electrical installation	12V/24V/48V/230V
Generator	silent separator Fisher Panda 15Kva
Batteries	48V 615 Ah
Start battery	yes
Battery charger	2x Victron 24V/16Ah - 1x Victron 12V/7Ah
Battery charger/inverter	1x Victron Multiplus 24V/5000W/120Ah - 1x Victron 48V/5000W/70Ah
Solar panel	9x
Shorepower	with cable
Insulation transformer	Victron
Spud pole	2x hydraulic telescopic, approx. 1.80 under the hull

NAVIGATION

Electric compass	Raymarine
Depth sounder	Raymarine
VHF	yes
Autopilot	Raymarine
Rudder angle indicator	On autopilot
Plotter/GPS	2x Raymarine Aioxm 9"
AIS transceiver	Raymarine AIS400 Class A
Camera	yes
Navigation lights	yes
Searchlight	yes



EQUIPMENT

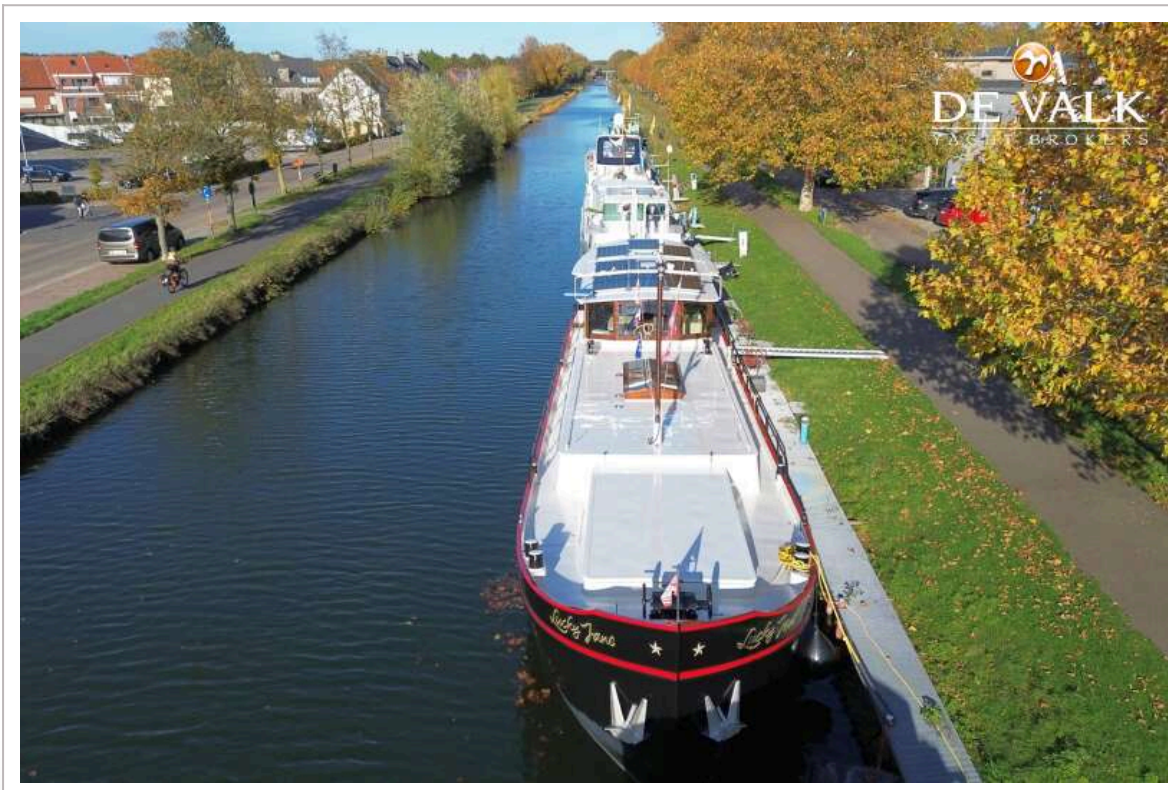
Fixed windscreen	yes
Fixed hardtop	yes
Cockpit table	yes
Anchor	yes
Anchor 2	yes
Windlass	hydraulic
Sea railing	steel
Pushpit	yes
Pulpit	yes
Horn	yes
Fenders	yes
Mooring lines	yes
Extra info	Car lift in the forepeak



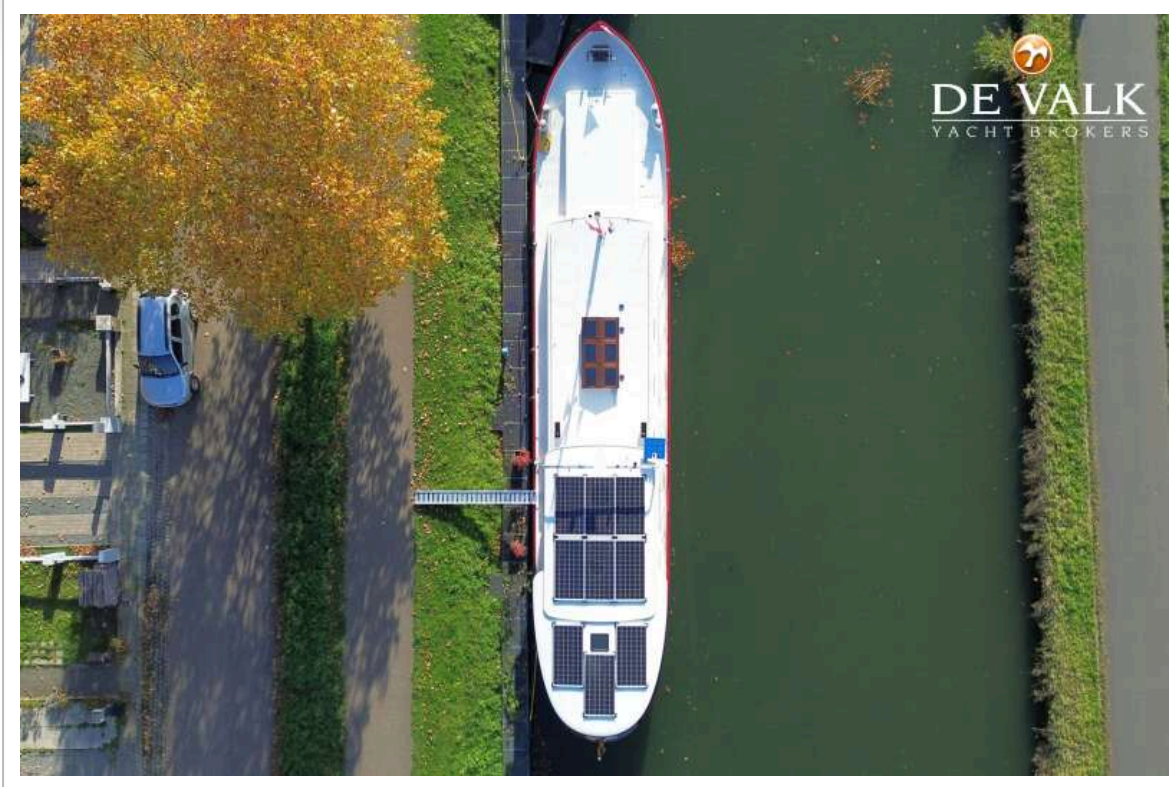
LUXE MOTOR 24.95



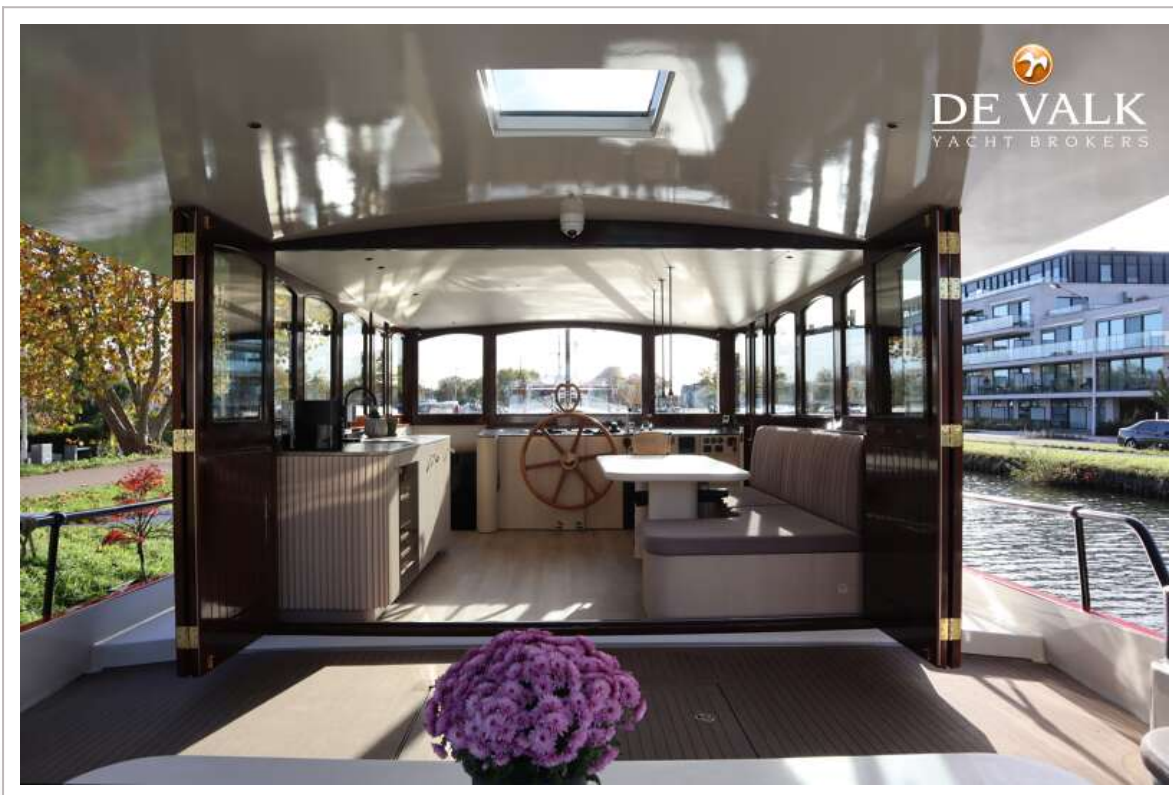
LUXE MOTOR 24.95



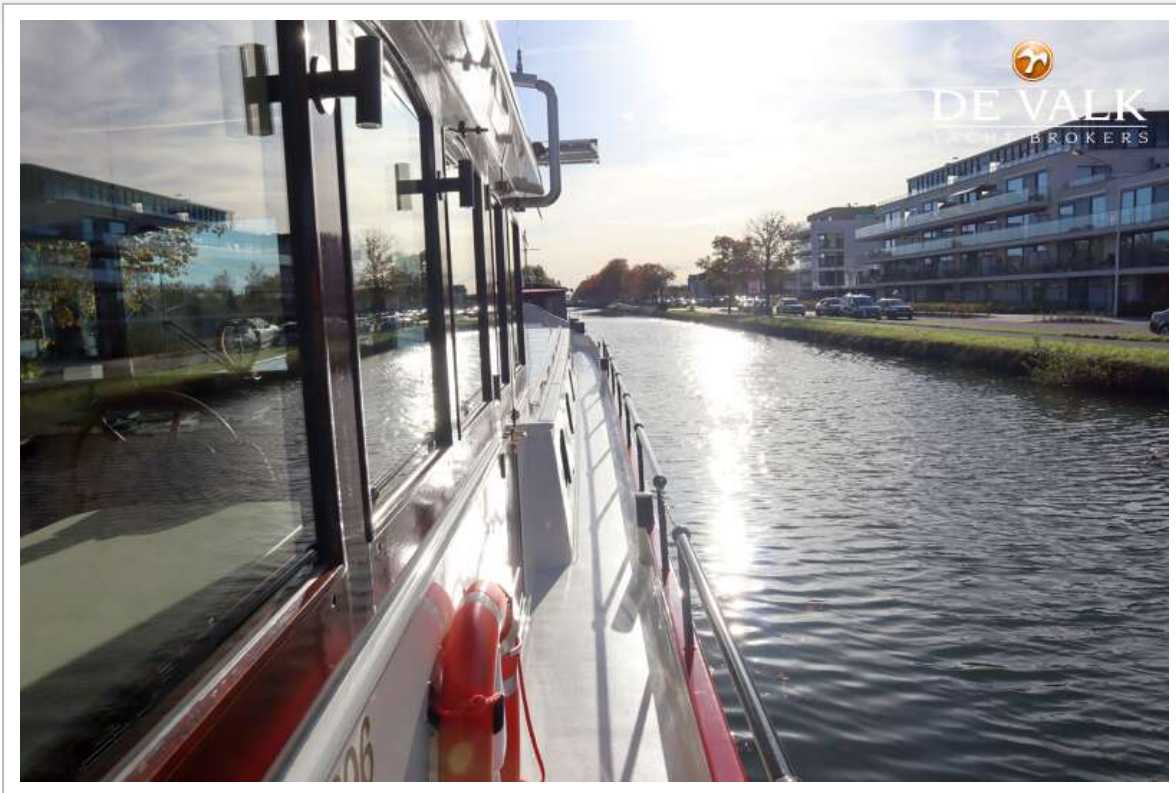
LUXE MOTOR 24.95



LUXE MOTOR 24.95



LUXE MOTOR 24.95



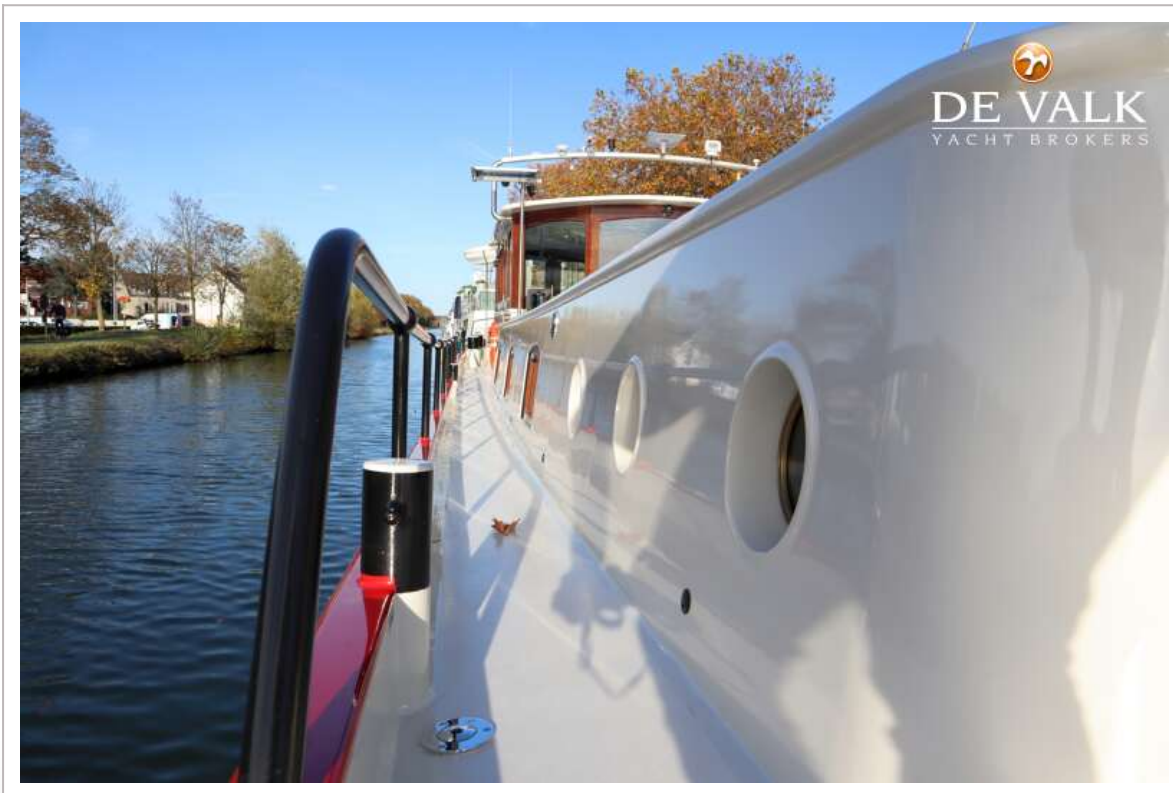
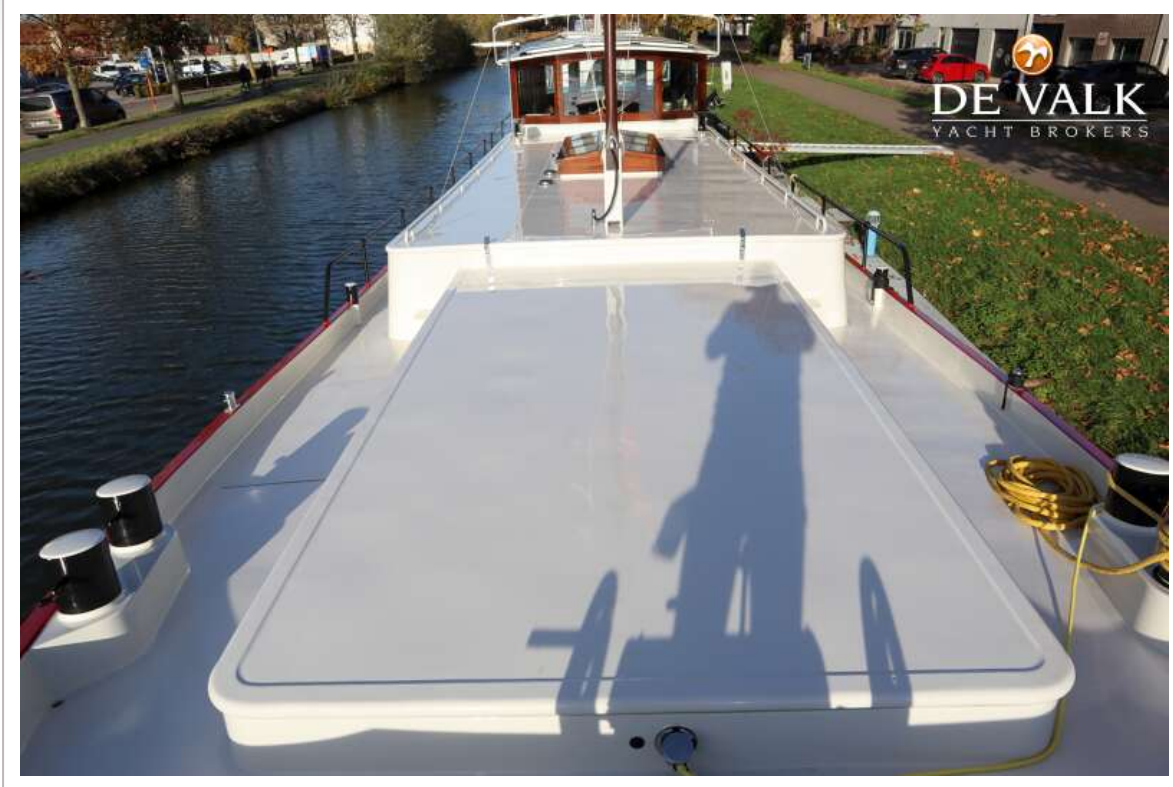
LUXE MOTOR 24.95



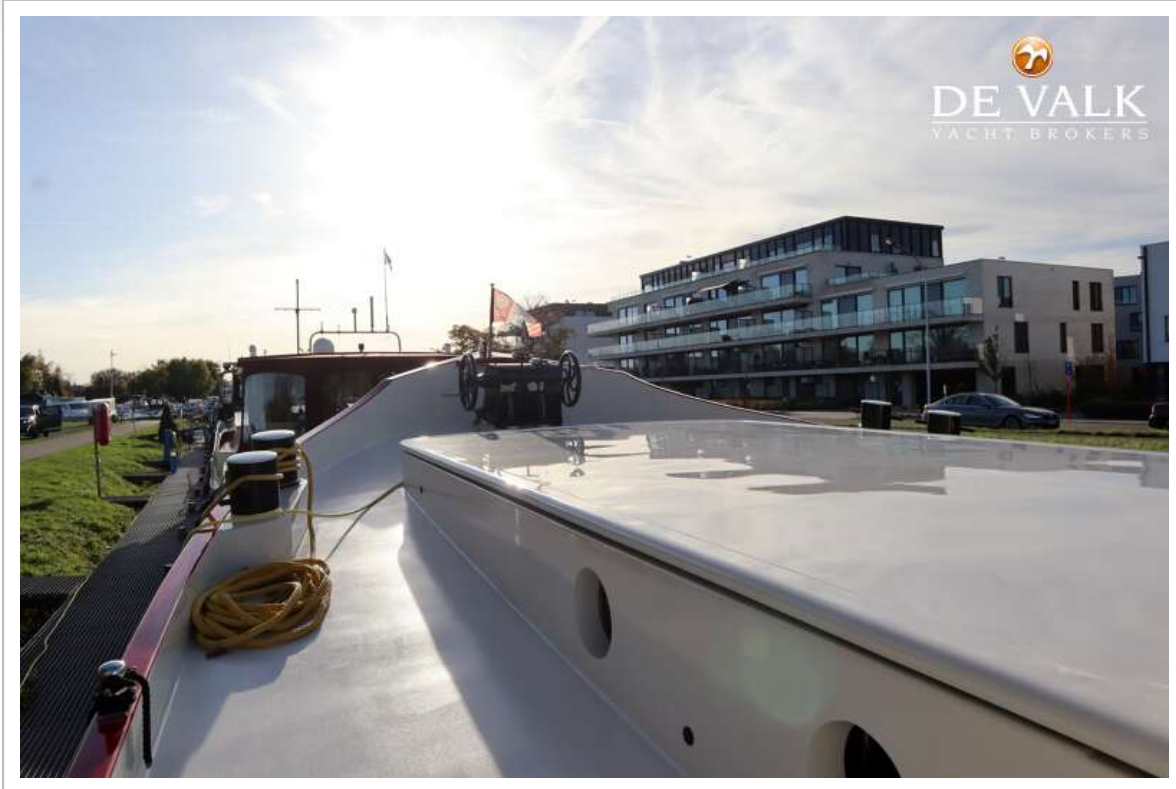
LUXE MOTOR 24.95



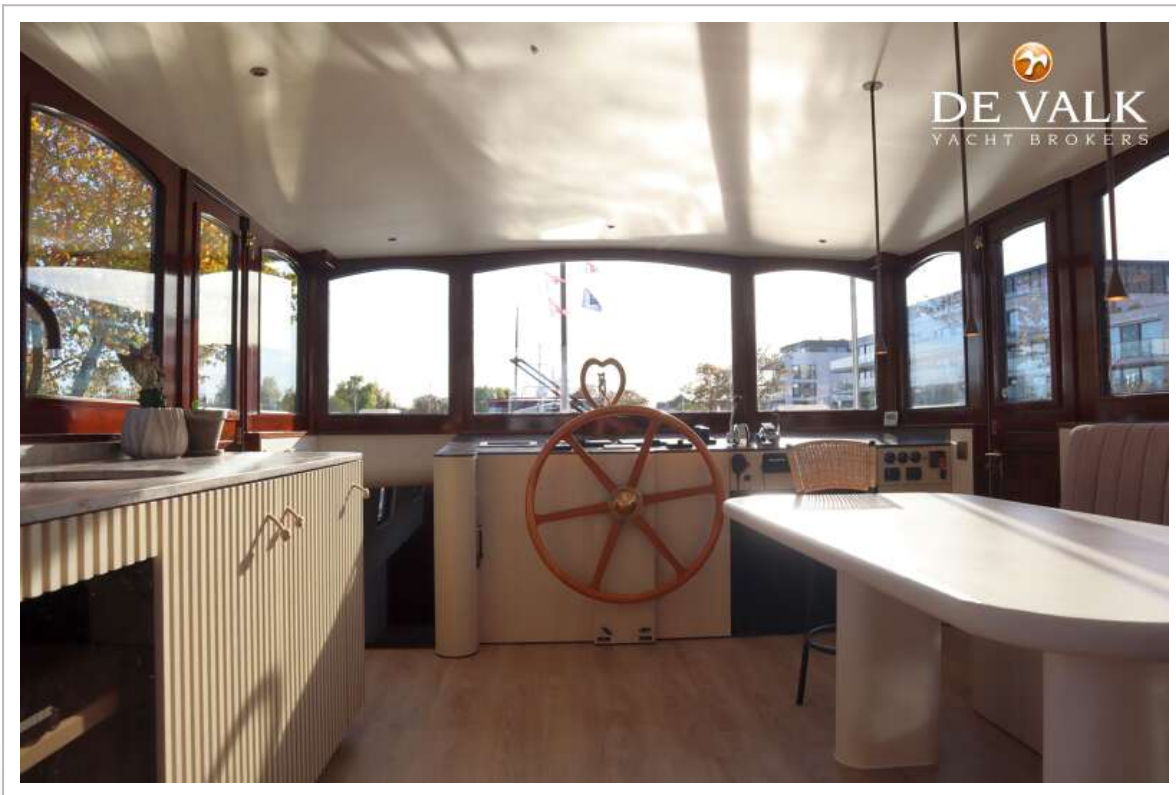
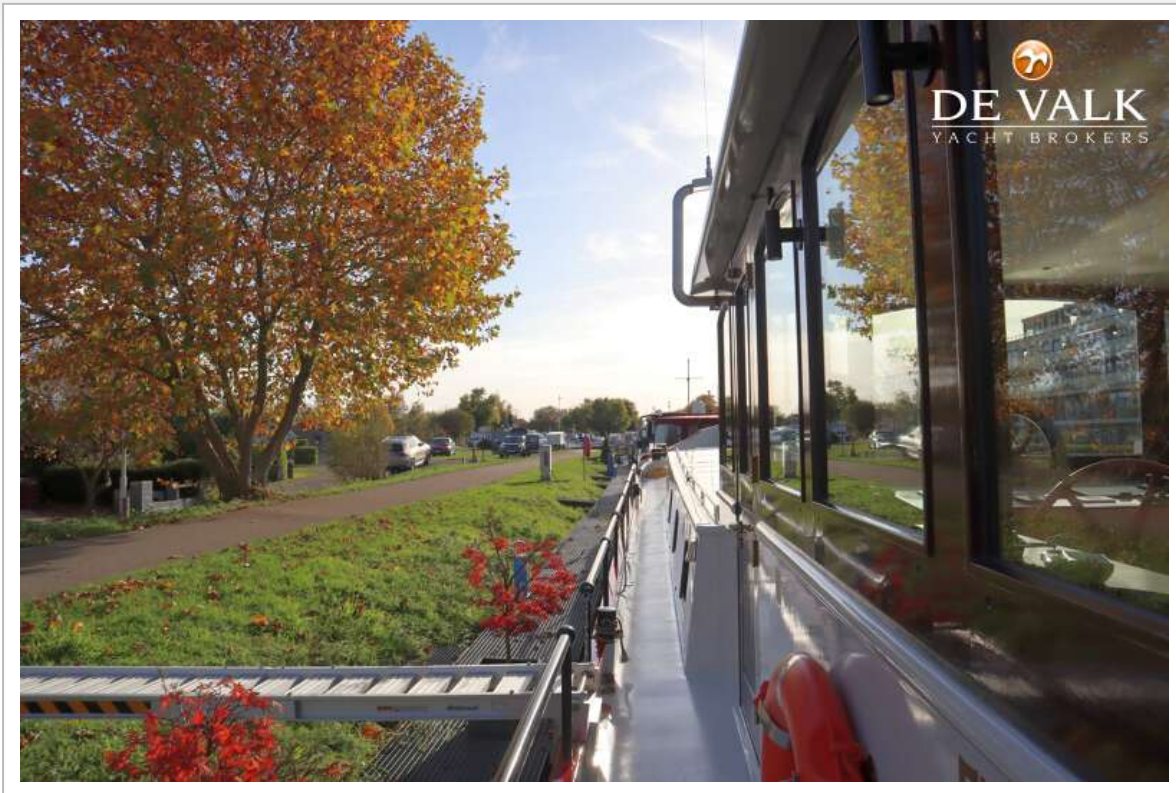
LUXE MOTOR 24.95



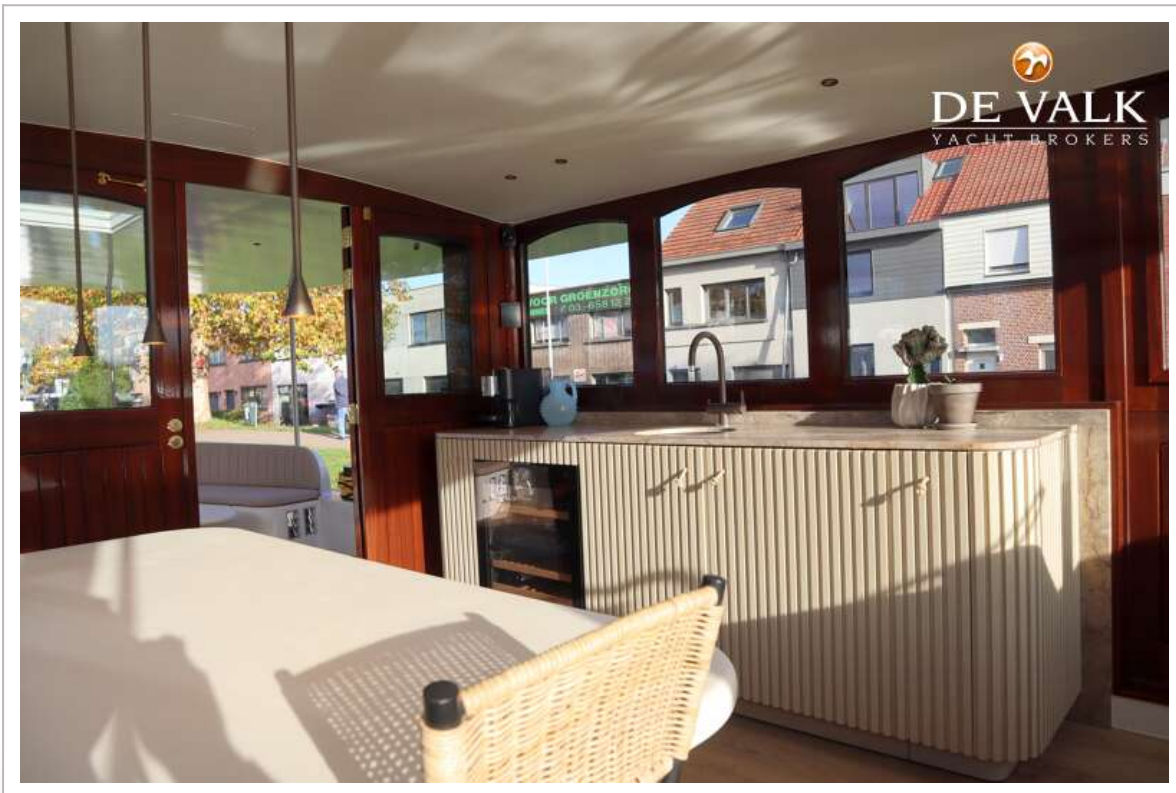
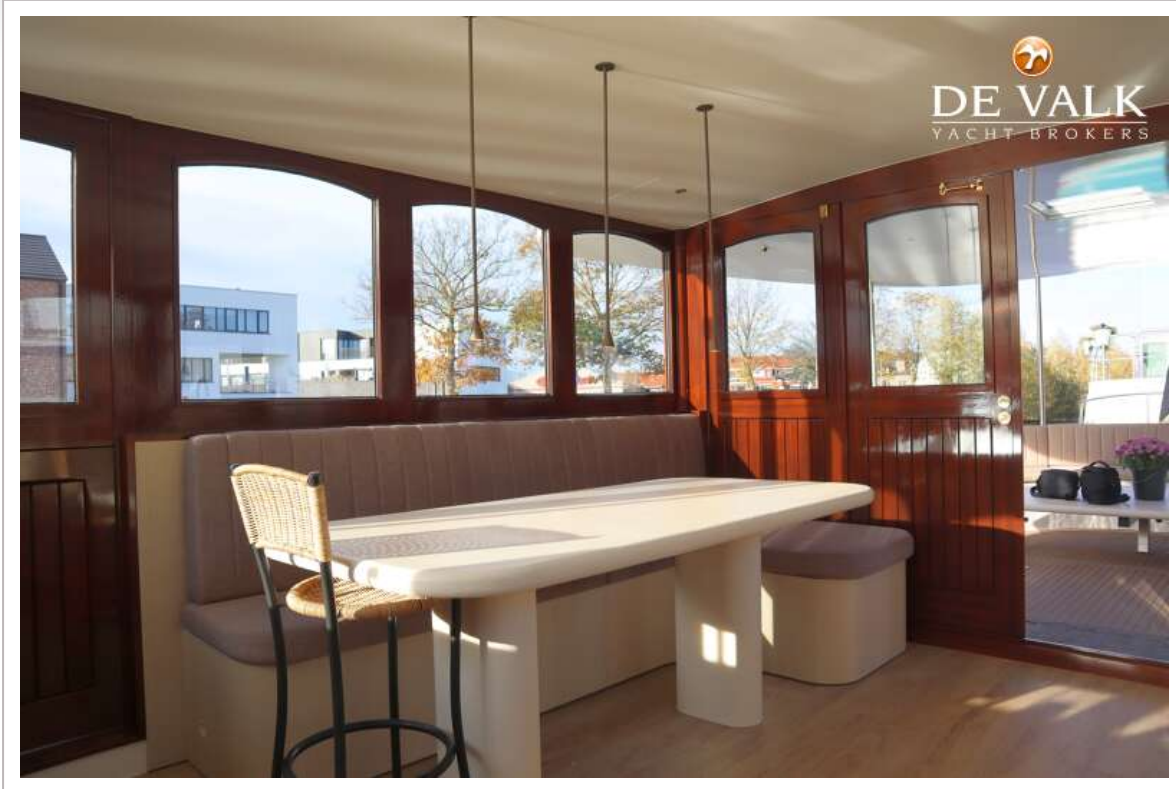
LUXE MOTOR 24.95

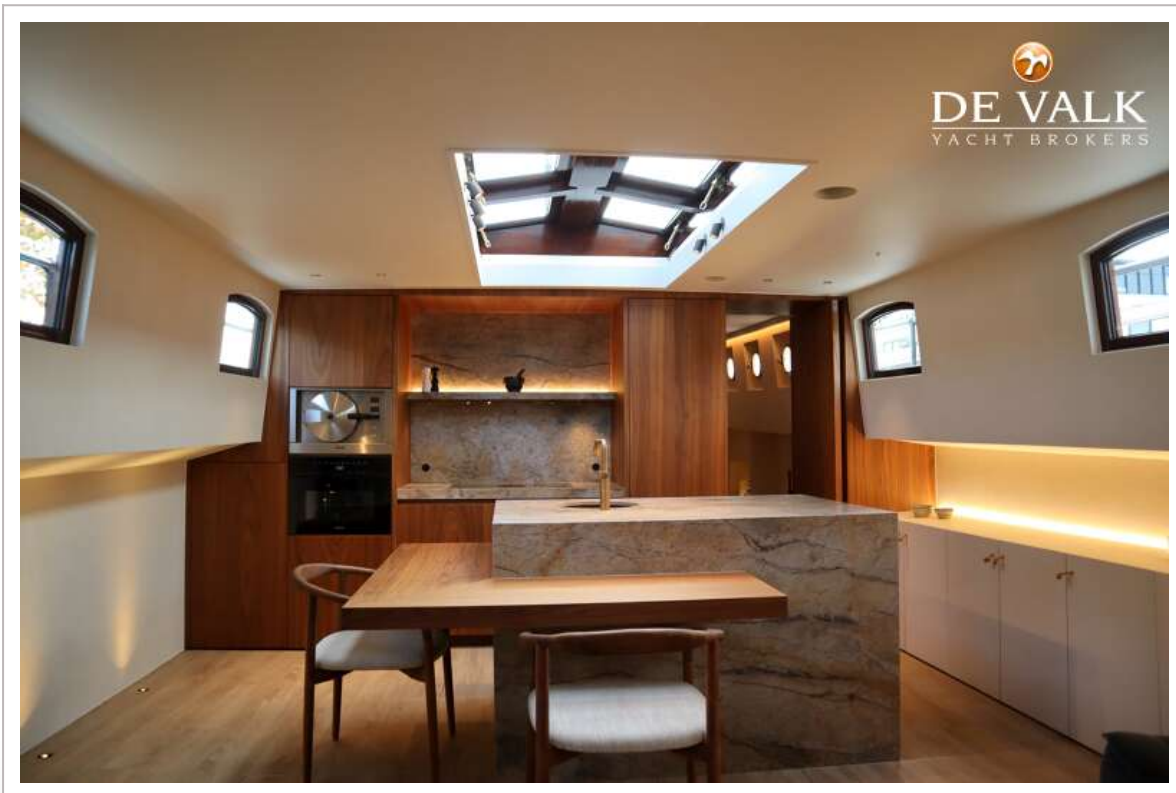
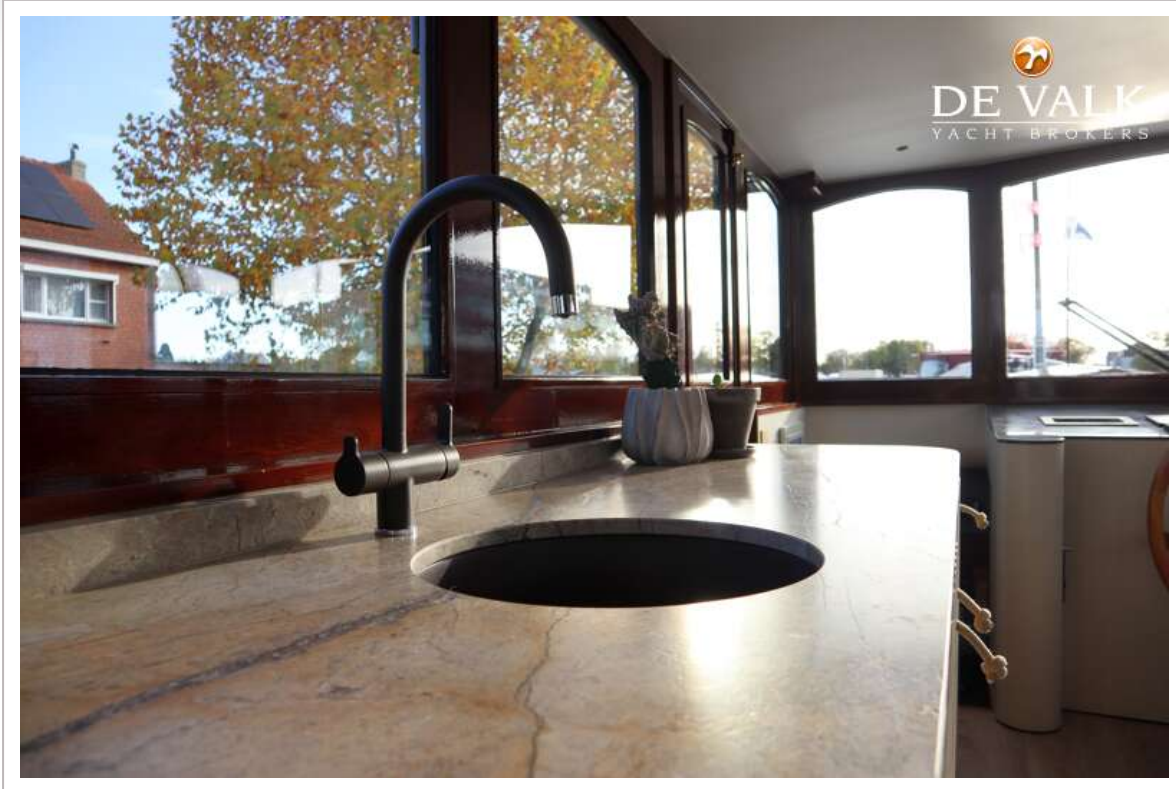


LUXE MOTOR 24.95

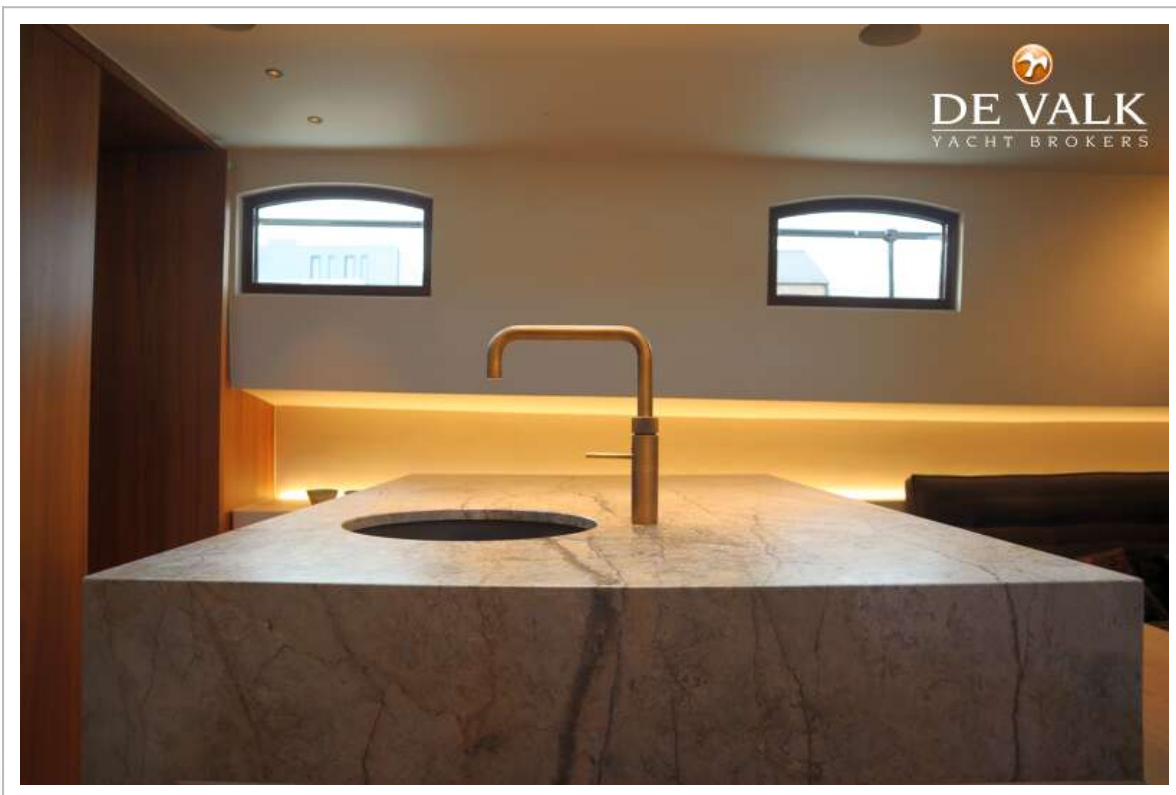
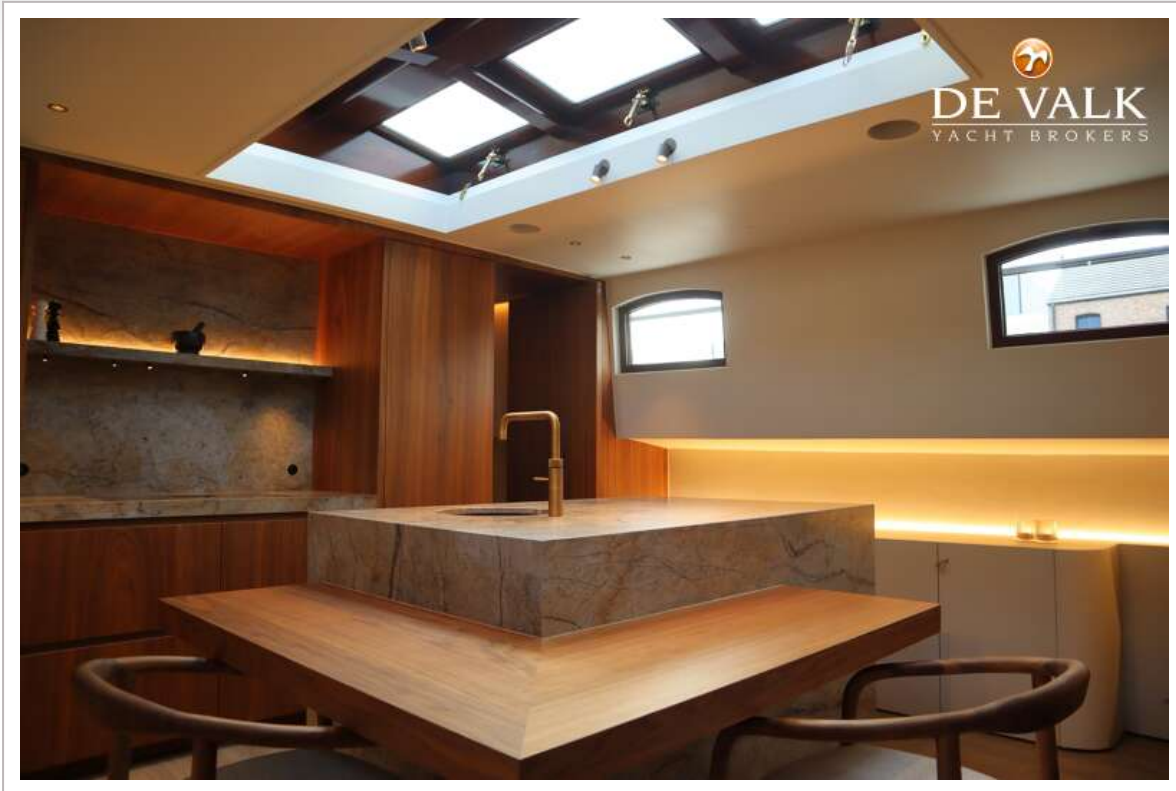


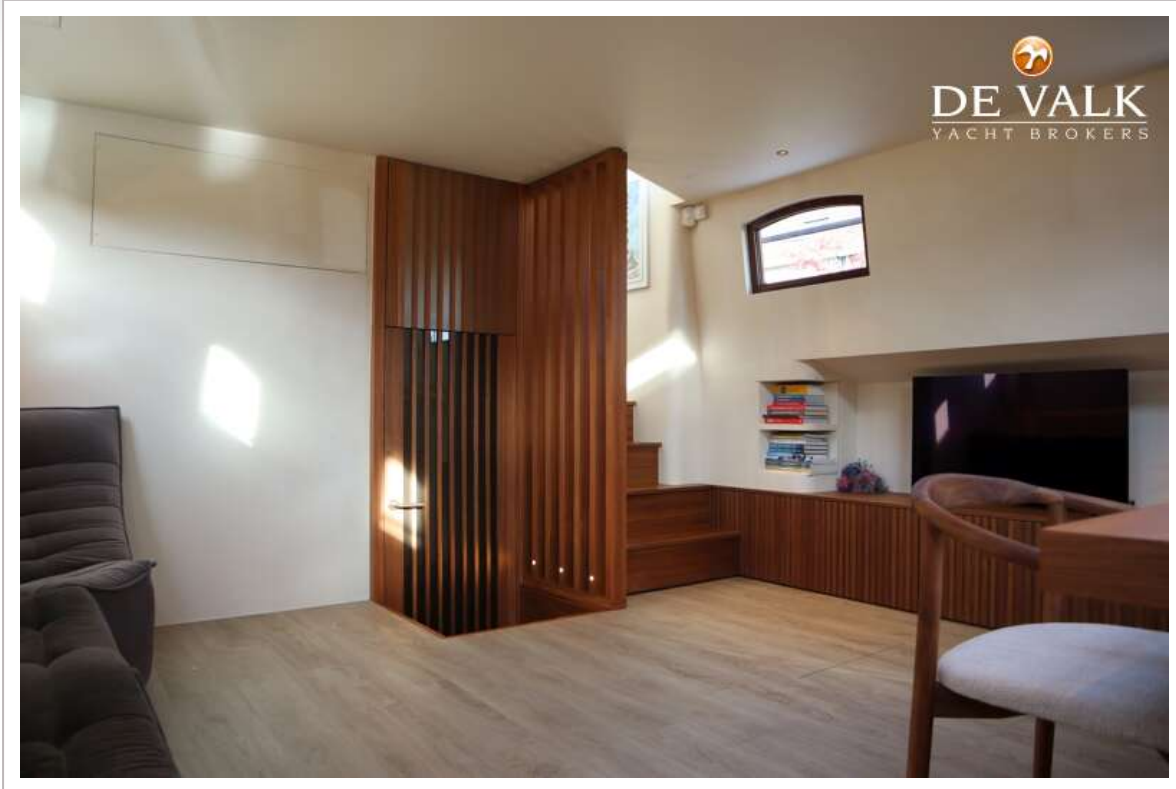
LUXE MOTOR 24.95

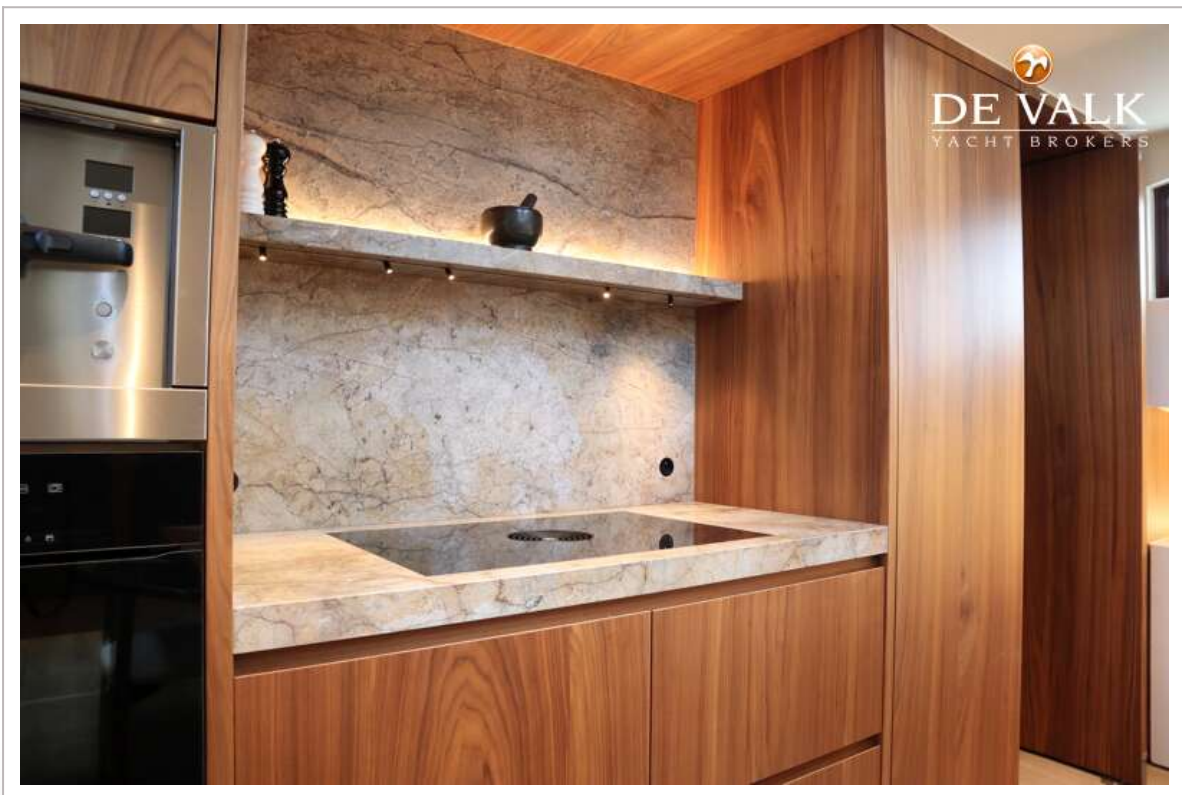
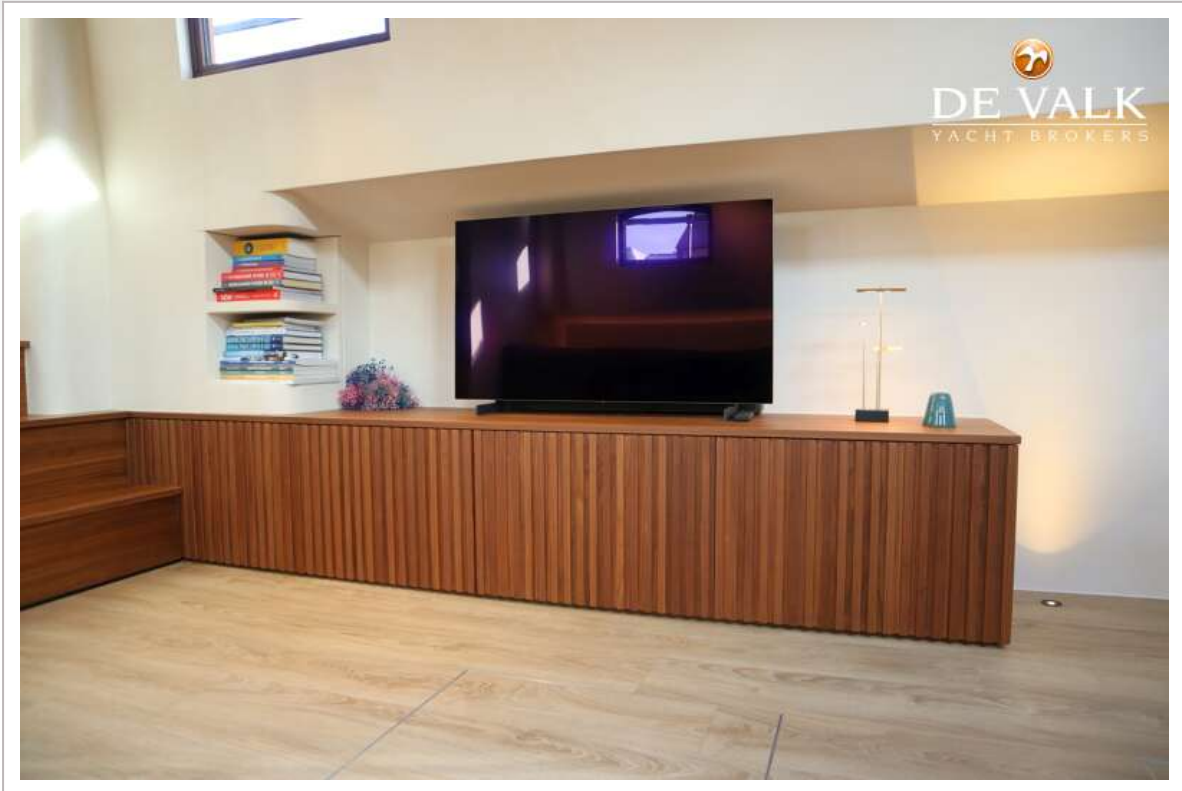




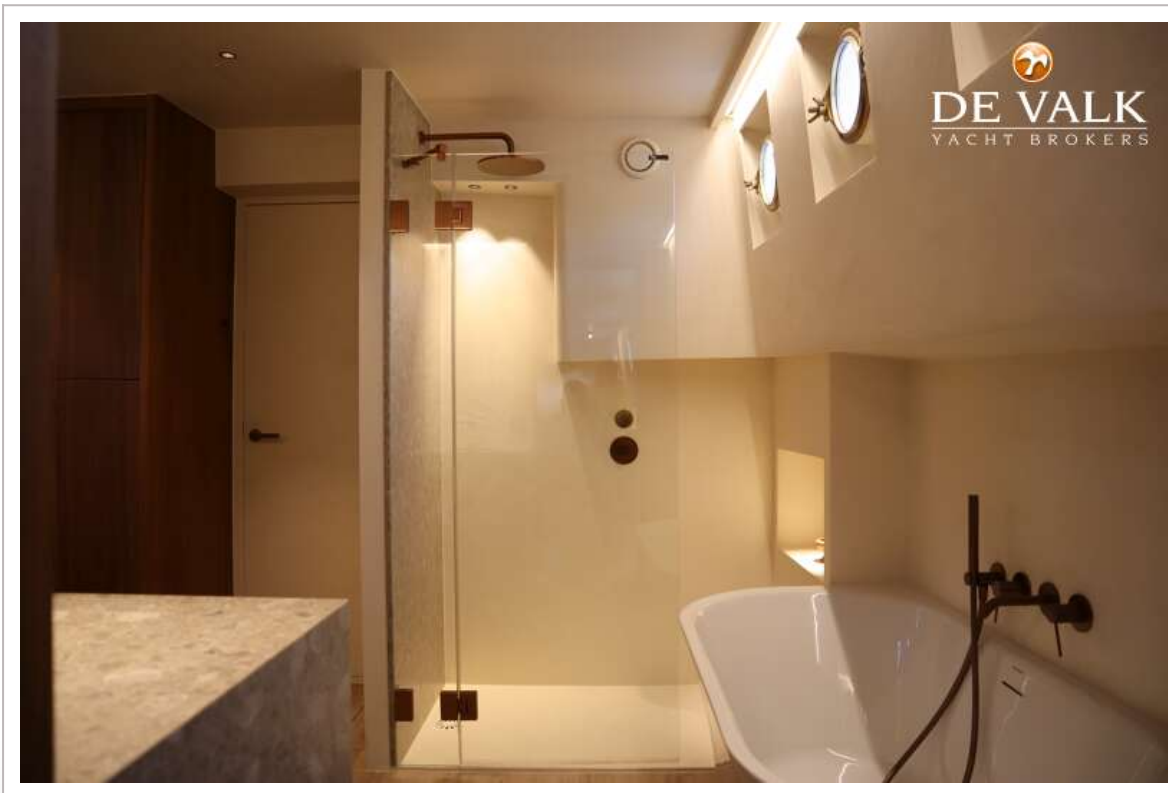
LUXE MOTOR 24.95







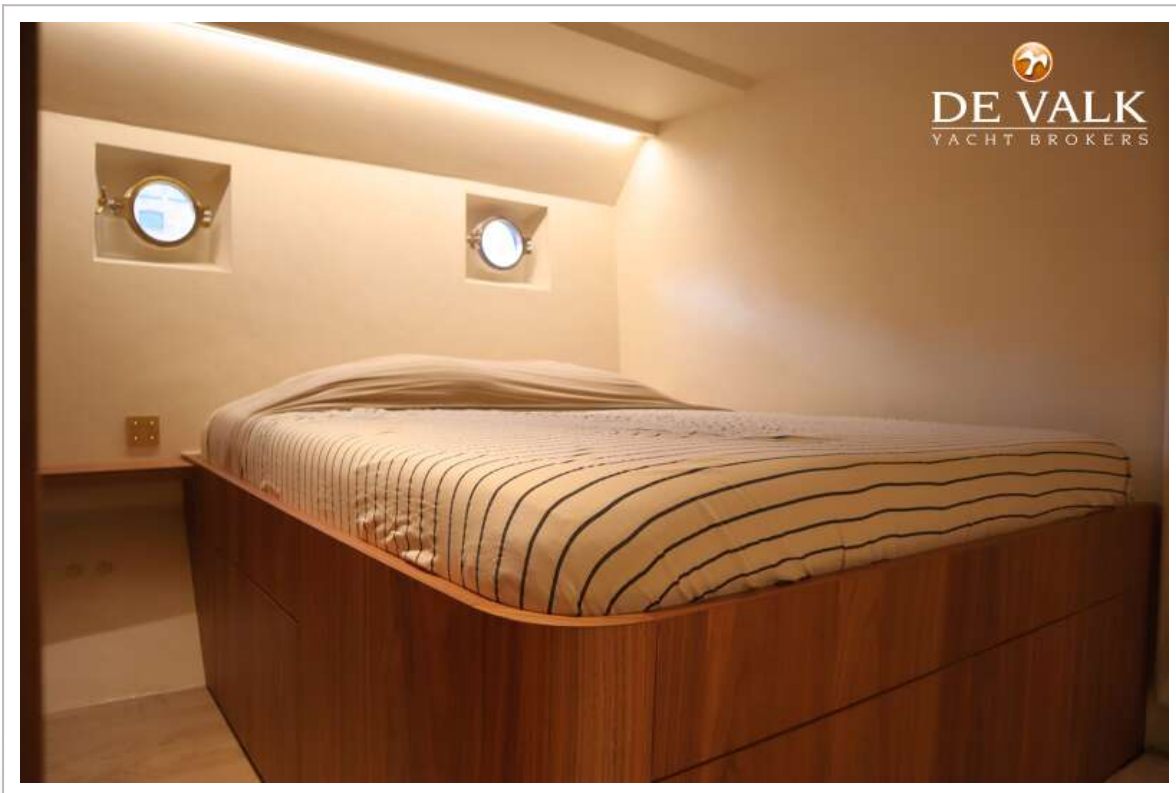
LUXE MOTOR 24.95



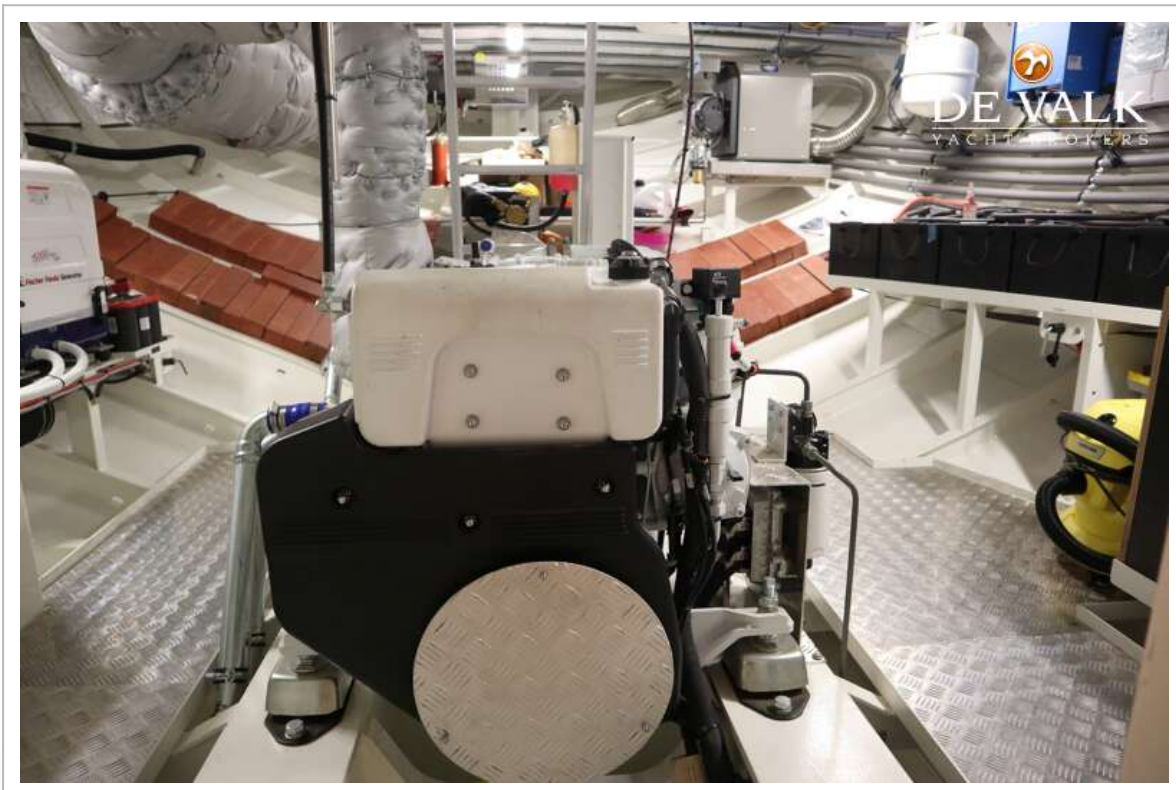
LUXE MOTOR 24.95



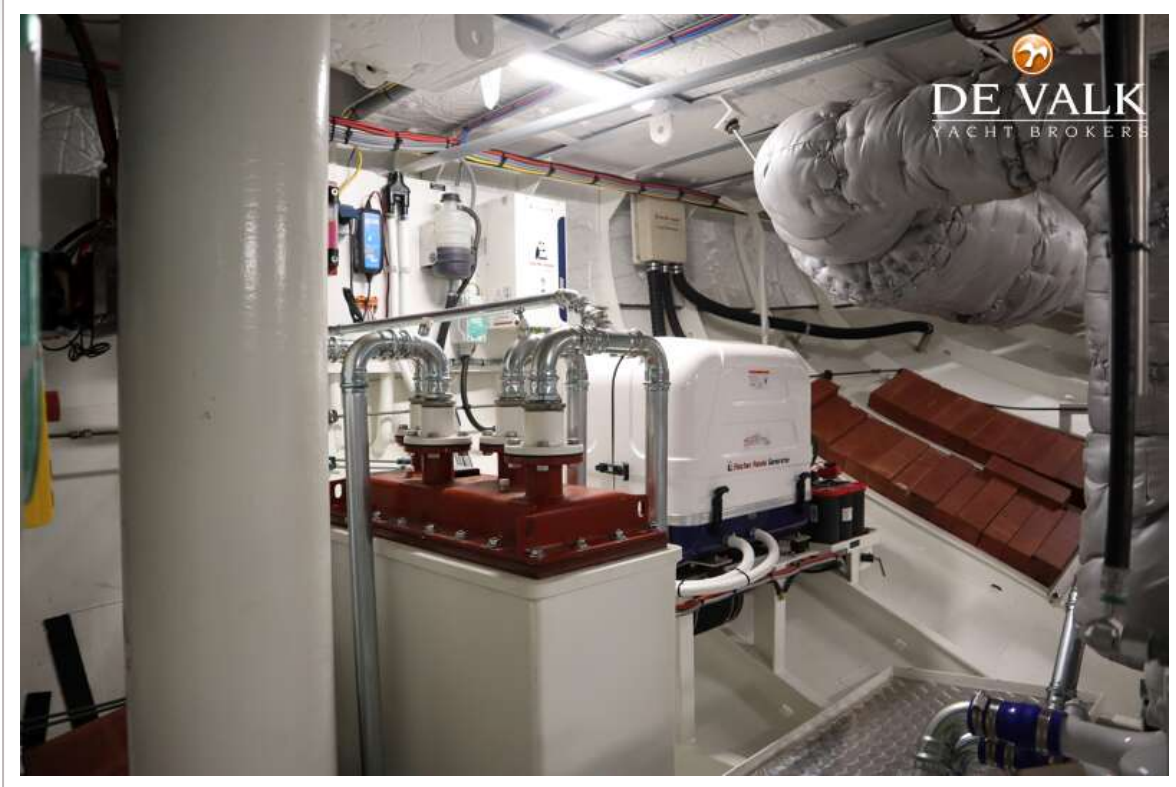
LUXE MOTOR 24.95



LUXE MOTOR 24.95



LUXE MOTOR 24.95



LUXE MOTOR 24.95



LUXE MOTOR 24.95

