



AZIMUT 55 E

BROKER'S COMMENTS

She had shafts and props and cutlass bearings replaced and fully osmosis protected all carried out by official Azimut dealership, sunbathing cushions replaced, new Raymarine Navigation Equipment fitted.

Francis James Holbourne

SPECIFICATIONS

Dimensions	16.76 x 4.75 x 1.23 (m)	Builder	Azimut Yachts
Built	2004	Cabins	3
Material	GRP	Berths	2
Engine(s)	2 x Caterpillar C12 DITA diesel	Hp/Kw	2 x 740.00 (hp), 544.64 (kw)
Asking price	€ 335.000 (VAT Paid)	Lying	

CONTACT

Sales office	De Valk Costa del Sol	Telephone	+34 951120059
Address	Southern Spain Region 29660 Malaga ES	E-mail	costadelsol@devalk.nl

DISCLAIMER

These particulars are given in good faith as supplied but cannot be guaranteed.



GENERAL

Model	AZIMUT 55 E
Type	motor yacht
LOA (m)	16,76
Beam (m)	4,75
Draft (m)	1,23
Year built	2004
Builder	Azimut Yachts
Country	Italy
Displacement (t)	23,67
CE norm	B
Hull material	GRP
Hull colour	white
Hull shape	deep-V
Superstructure material	GRP
Deck material	GRP
Deck finish	teak
Cockpit deck finish	teak
Portholes	stainless steel
Fuel tank (litre)	stainless steel 2520
Wheel steering	hydraulic
Flybridge helm position	hydraulic

ACCOMMODATION

Cabins	3
Berths	2
Crew cabin	1
Crew berths	1
Interior	cherry
Floor	carpet
Heating	electric 220V



Air-conditioning	reverse cycle airco
Countertop	corian
Cooker	electric
Oven	yes
Extractor	yes
Microwave	yes
Fridge	yes
Hot water system	220V
Water pressure system	electrical
Dishwasher	yes
Owners cabin	double bed
Wardrobe	hanging/drawers/shelves
Bathroom	en suite
Toilet	en suite
Toilet system	electric
Wash basin	in the bathroom
Shower	en suite
Guest cabin 1	double bed
Wardrobe	hanging/drawers/shelves
Bathroom	en suite
Toilet	en suite
Toilet system	electric
Wash basin	in the bathroom
Shower	en suite
Guest cabin 2	twin single
Wardrobe	drawers and shelves
Bathroom	shared
Toilet	shared
Toilet system	electric
Wash basin	in the bathroom
Shower	shared
Crew cabin(s)	yes



Toilet system	electric
Wash basin	in the cabin
Flybridge	yes
Wet bar	yes

MACHINERY

No of engines	2
Make	Caterpillar
Type	C12 DITA
HP	740
kW	544.64
Fuel	diesel
Year installed	2004
Maximum speed (kn)	32
Cruising speed (kn)	26
Engine hours	980
Engine cooling system	freshwater heat exchanger
Drive	shaft
Engine controls	electrical
Gearbox	hydraulic
Bowthruster	electric
Shaft lubrication	water
Electric bilge pump	yes
Bilge alarm	yes
Generator	wet exhaust
Battery charger	yes
Shorepower	with cable

NAVIGATION

Compass	yes
Compass on flybridge	yes



Multi control display	yes
Depth sounder	yes
Repeater	yes
VHF	yes
Autopilot	yes
Rudder angle indicator	yes
Radar	yes
GPS	yes
Plotter	yes

EQUIPMENT

Bimini	yes
Cockpit cushions	yes
Cockpit table	yes
Bathing platform	yes
Gangway	Hydraulic
Anchor chain	yes
Windlass	yes



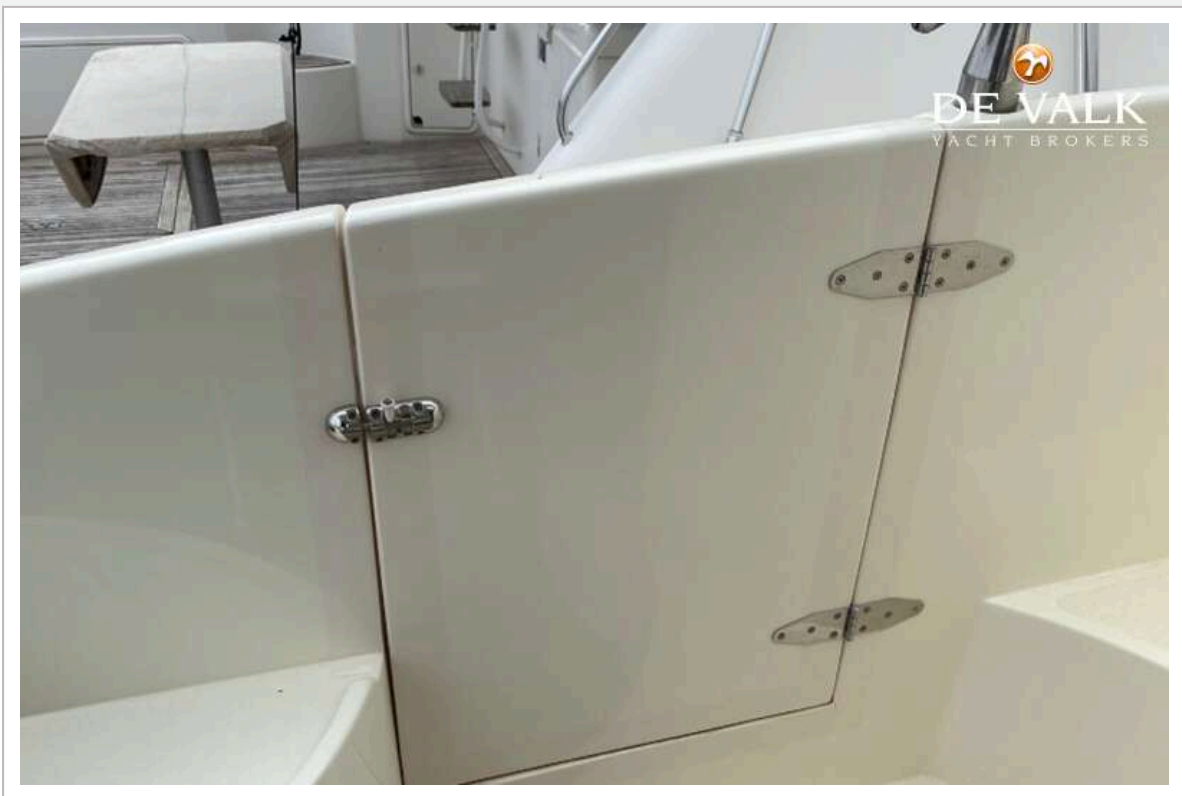
AZIMUT 55 E



AZIMUT 55 E



AZIMUT 55 E



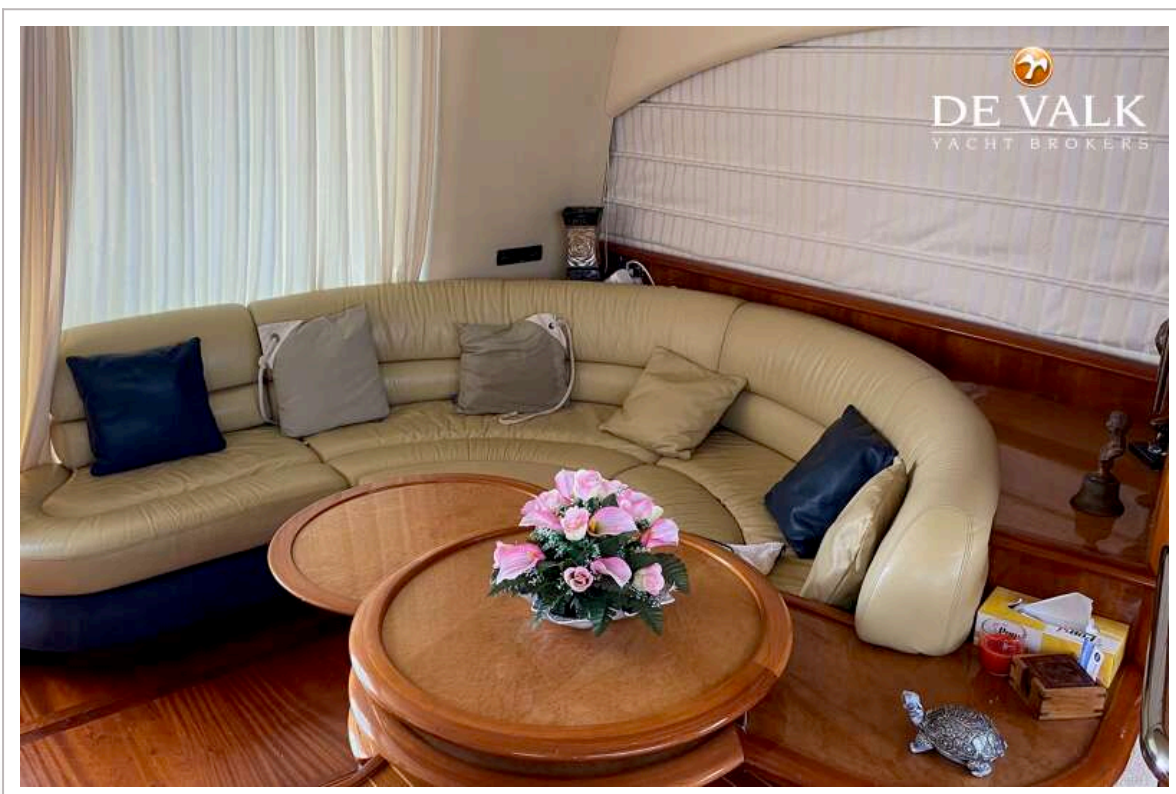
AZIMUT 55 E



AZIMUT 55 E



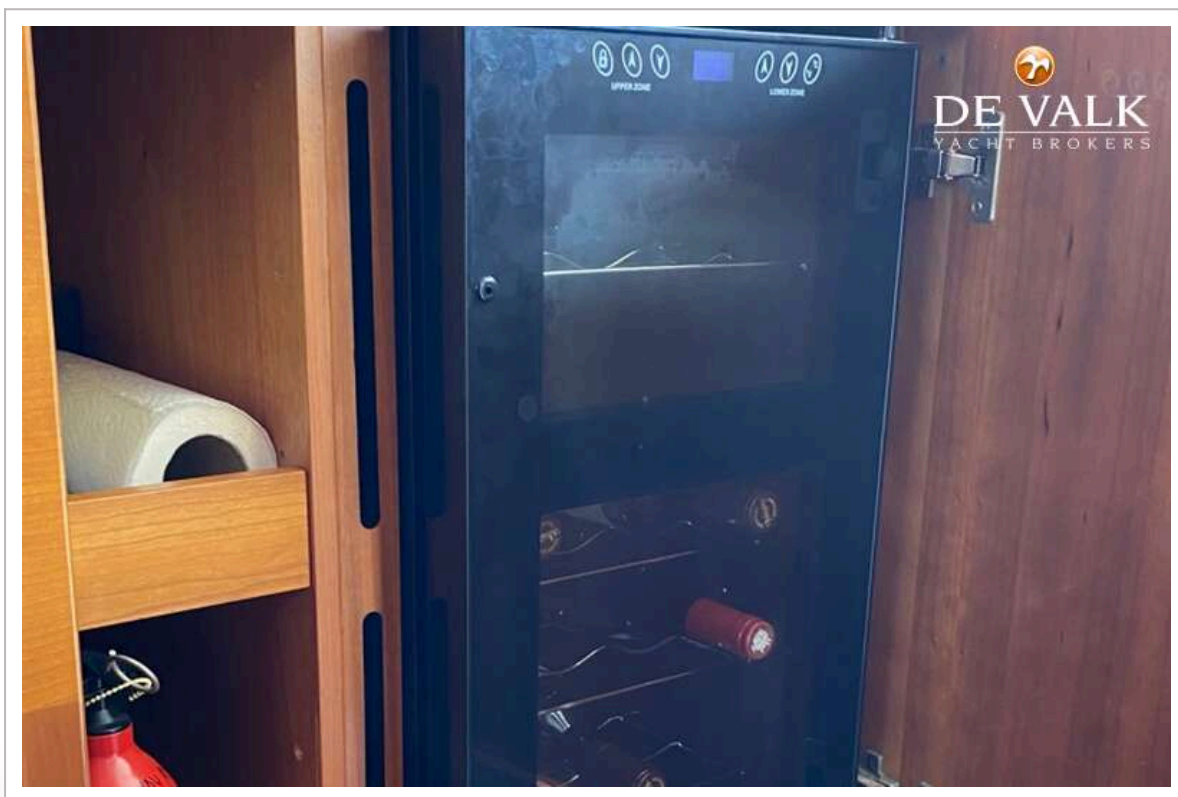
AZIMUT 55 E



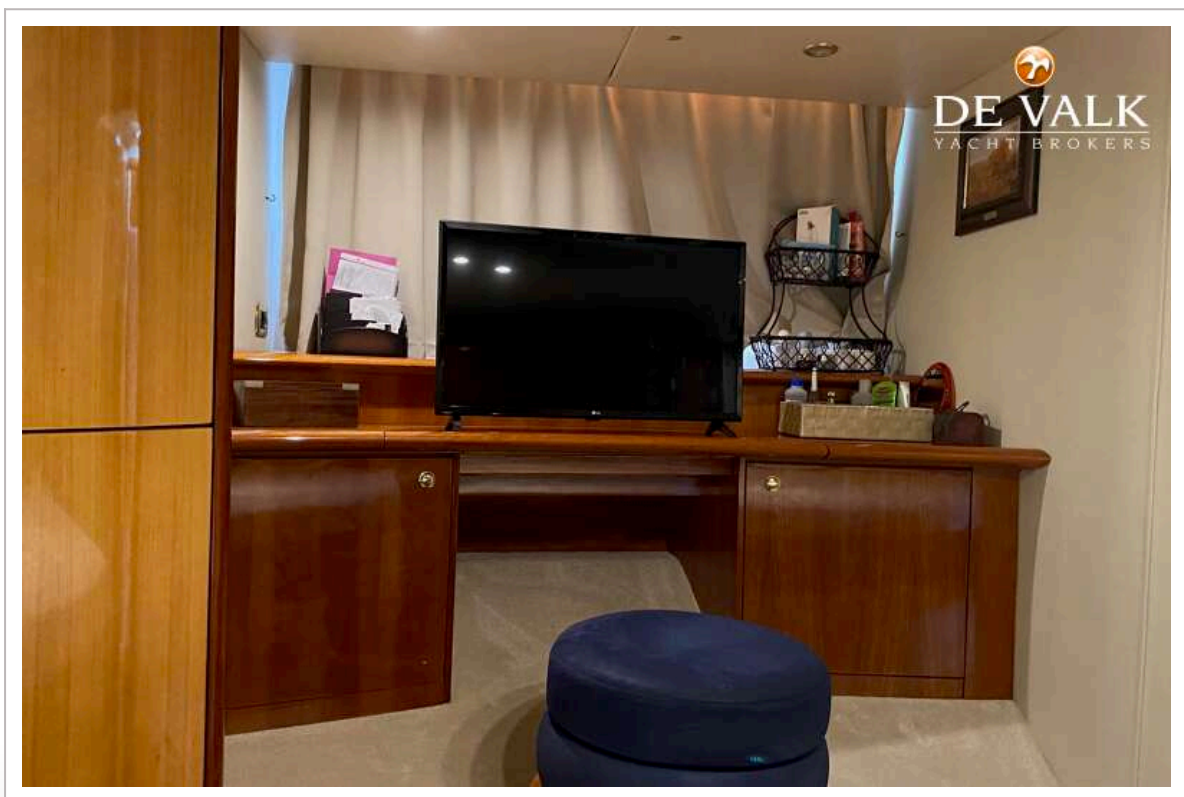
AZIMUT 55 E



AZIMUT 55 E



AZIMUT 55 E



AZIMUT 55 E





AZIMUT 55 E

