



DE VALK
YACHT BROKERS

ELAN E6



DE VALK
YACHT BROKERS

BROKER'S COMMENTS

The Elan E6 is a modern sailing yacht capable of delivering above-average speeds under sail. This fully equipped example has always been used in the Adriatic and has been regularly well maintained. Designed by Rob Humphreys and Pininfarina, this model features distinctive styling and excellent sailing performance. Possible shared ownership for charter management (with current owner).

Miha Spendal

SPECIFICATIONS

Dimensions	14.10 x 4.49 x 2.80 (m)	Builder	Elan Yachts
Built	2022	Cabins	4
Material	GRP	Berths	8
Engine(s)	1 x Volvo D2-60F diesel	Hp/Kw	60.00 (hp), 44.16 (kw)
Asking price	€ 480.000 (VAT Not paid)	Lying	elsewhere / Not at sales office

CONTACT

Sales office	De Valk Istria	Telephone	+386 (1) 600 2704
Address	(Marina Izola) Dantejeva Ulica 22 6310 Izola SI	E-mail	istria@devalk.nl

DISCLAIMER

These particulars are given in good faith as supplied but cannot be guaranteed.



GENERAL

Model	ELAN E6
Type	sailing yacht
LOA (m)	14,10
LWL (m)	13,68
Beam (m)	4,49
Draft (m)	2,80
Year built	2022
Launched	2022
Builder	Elan Yachts
Country	Slovenia
Designer	Rob Humphreys / Pininfarina
Displacement (t)	11,25
Ballast (tonnes)	3,26
CE norm	A
Hull material	GRP
Hull colour	white
Keel type	bulb keel T-keel
Superstructure material	GRP
Deck material	GRP
Deck finish	non-skid moulded in
Cockpit deck finish	teak
Antifouling (year)	2025
Fuel tank (litre)	stainless steel 240
Level indicator (fuel tank)	yes
Freshwater tank (litre)	stainless steel 370
Level indicator (freshwater)	yes
Blackwater tank (litre)	yes
Level indicator (blackwater)	yes
Wheel steering	cable steering
Emergency tiller	yes



ACCOMMODATION

Cabins	4
Berths	8
Interior	oak
Floor	wood
Saloon	yes
Heating	electric 220V
Air-conditioning	reverse cycle airco Sinclair
Chart table	yes
Galley	yes
Countertop	corian
Sink	stainless steel
Cooker	calor gas
Oven	yes
Fridge	2x, top and front loader
Freezer	yes
Hot water system	220V + engine
Water pressure system	electrical
Owners cabin	double bed
Wardrobe	hanging/drawers/shelves
Bathroom	en suite
Toilet	en suite
Toilet system	electric
Shower	en suite
Guest cabin 1	bunk bed
Wardrobe	hanging
Bathroom	shared
Toilet	shared
Toilet system	electric
Shower	shared
Guest cabin 2	double bed



Wardrobe	hanging/drawers/shelves
Bathroom	shared
Toilet	shared
Toilet system	electric
Shower	shared
Guest cabin 3	double bed
Wardrobe	hanging/drawers/shelves
Toilet	shared
Toilet system	electric
Shower	shared

MACHINERY

No of engines	1
Make	Volvo
Type	D2-60F
HP	60
kW	44.16
Fuel	diesel
Year installed	2022
Engine hours	1317
Drive	sail-drive
Engine controls	bowden cable
Bowthruster	yes
Manual bilge pump	yes
Electric bilge pump	yes
Electrical installation	yes
Generator	yes
Start battery	yes
Service battery	yes
Battery charger	yes
Inverter	yes



Shorepower with cable

NAVIGATION

Compass	yes
Electric compass	B&G
Depth sounder	B&G
Log	B&G
Windset	B&G
VHF	yes
Autopilot	B&G
Rudder angle indicator	B&G
GPS	B&G
Plotter	B&G

EQUIPMENT

Sprayhood	yes
Bimini	Front and aft
Bathing platform	yes
Anchor	yes
Anchor chain	yes
Chain counter	yes
Windlass	electrical
Life raft	yes
Lifejackets	yes
Safety harness	yes
Fenders	yes
Mooring lines	yes
TV	yes
Surround Sound System	Fusion
Cockpit speakers	yes
Speakers in salon	yes



Fire extinguisher yes

RIGGING

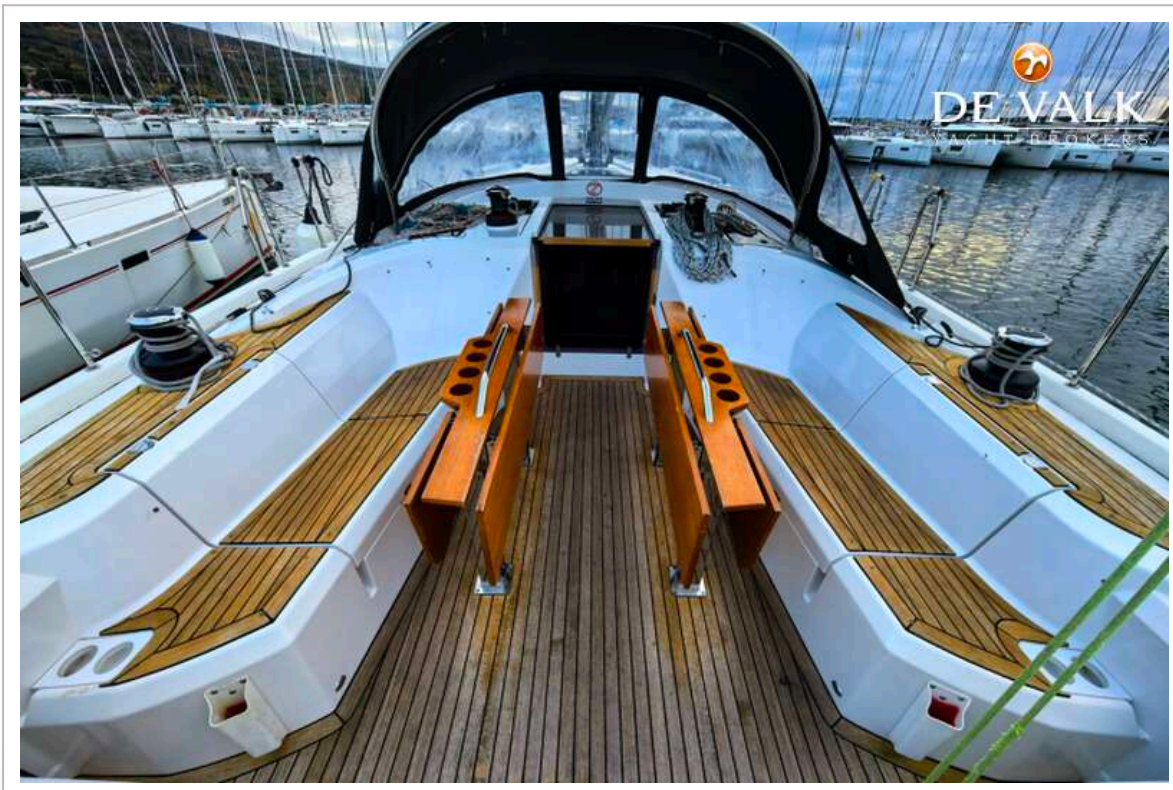
Rigging	fractional with backstays
Brand mast	Seldén
Spreaders	2
Keel stepped mast	yes
Mainsail	2 mains, one 8/10 second 10/10 (new)
Battcars	yes
Fully battened mainsail	yes
Genoa	2 genoas one 8/10 second 10/10 (new)
Genoa furler	yes
Gennaker	yes
Reefing System	slabreefing
Backstay adjuster	mechanical
Boomvang	yes
Primary sheet winch	yes
Genoa sheetwinches	yes
Halyard winches	yes



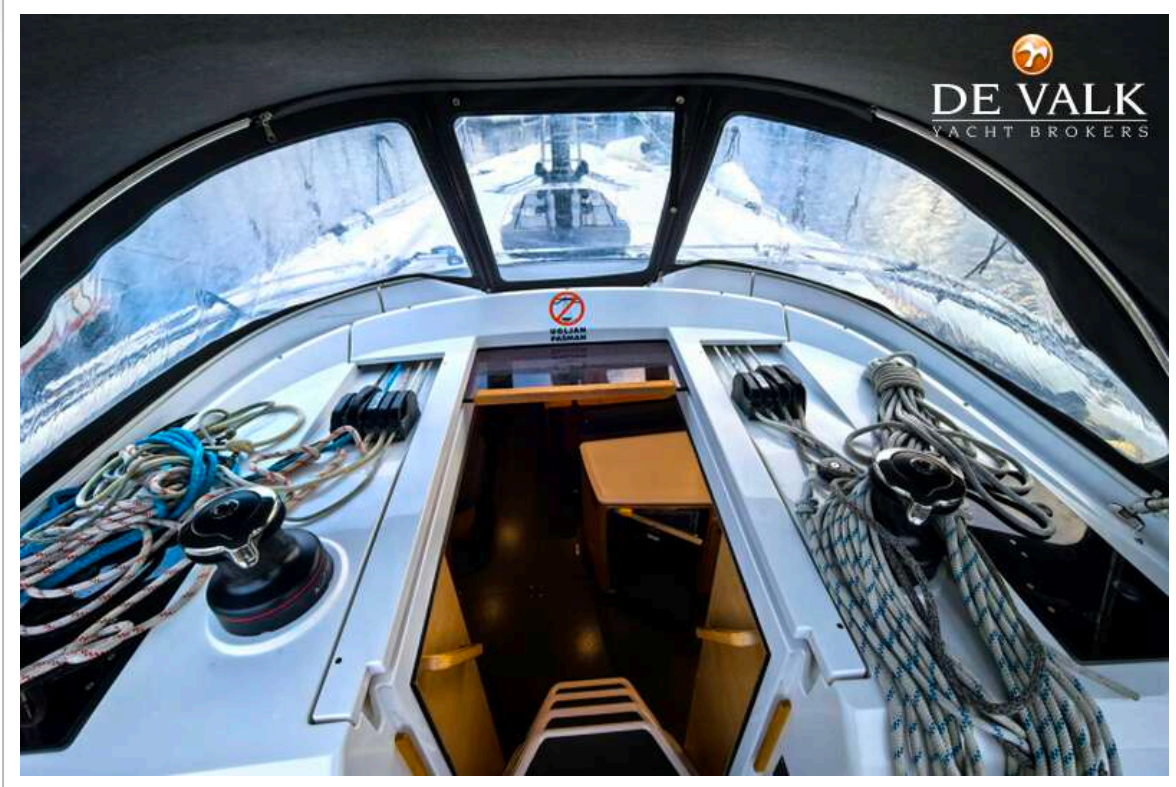
ELAN E6



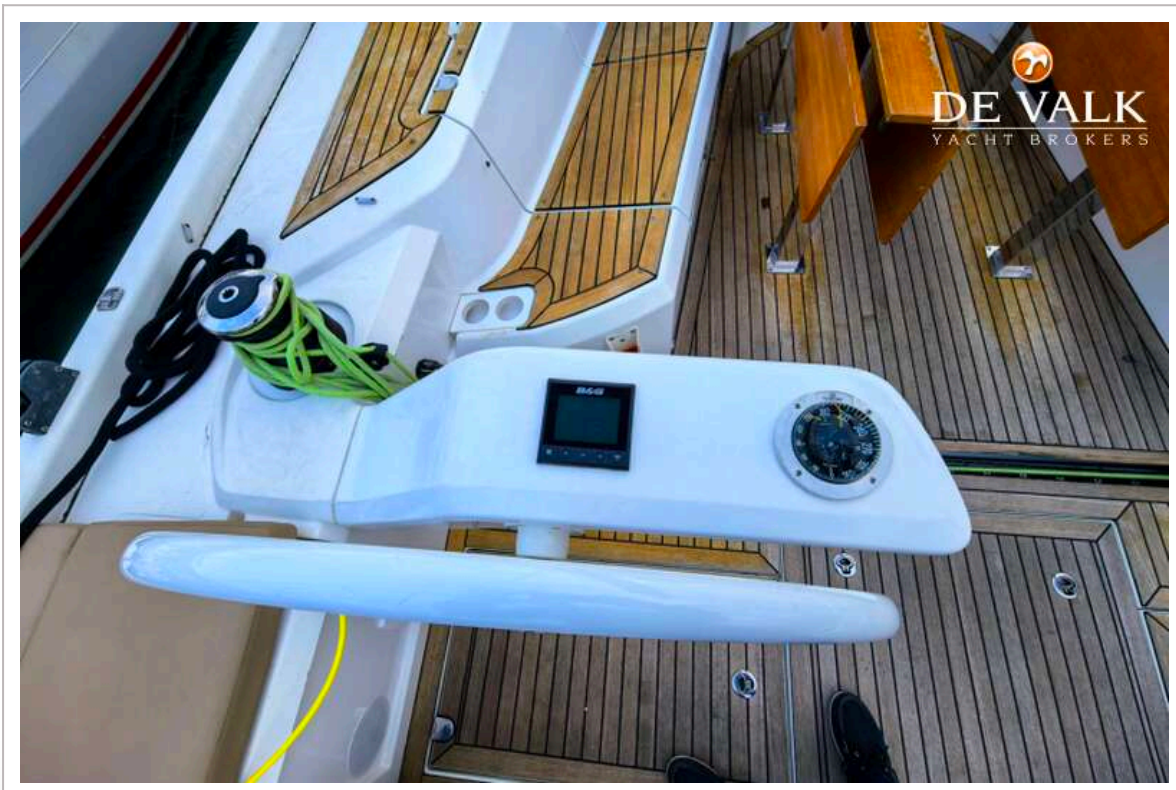
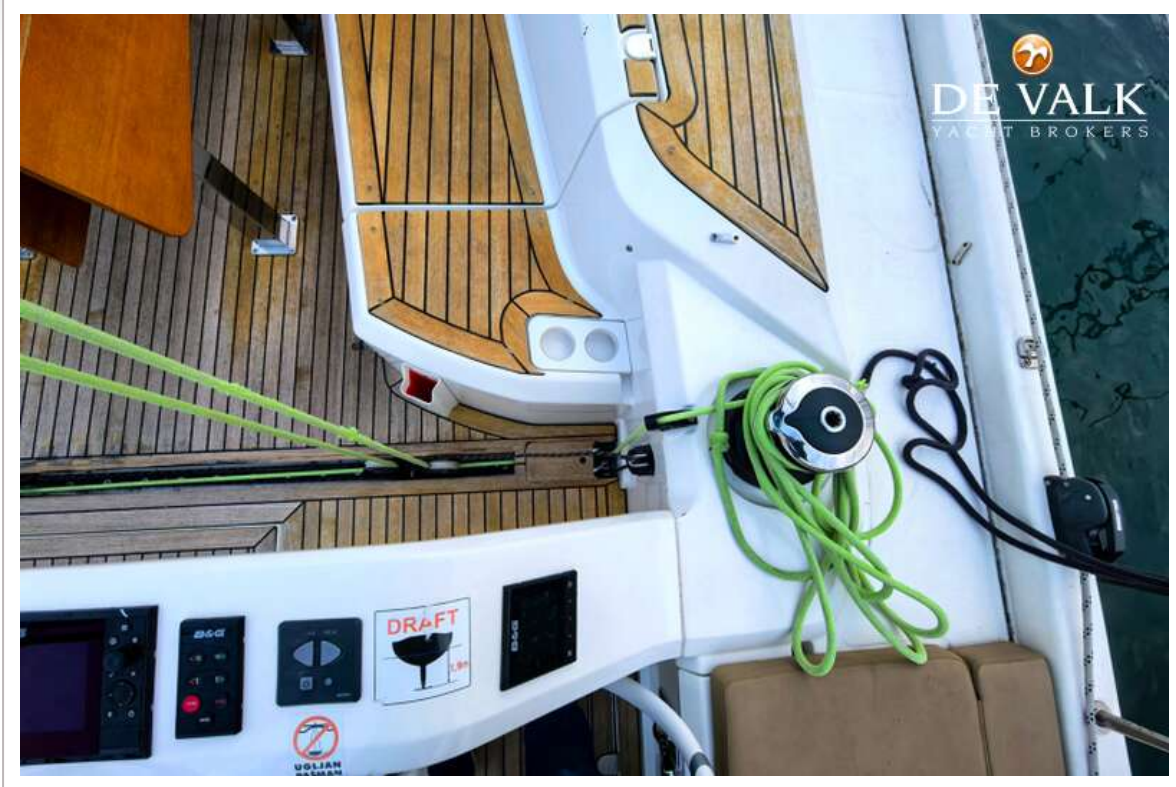
ELAN E6



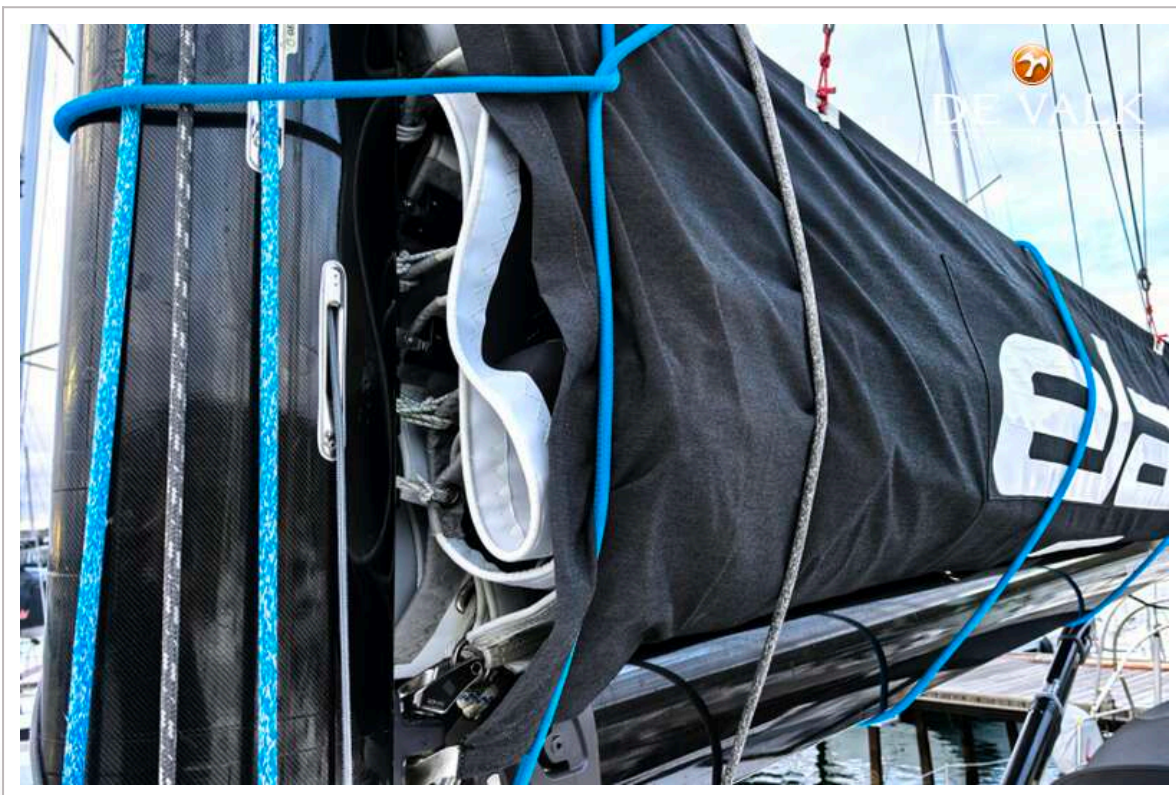
ELAN E6



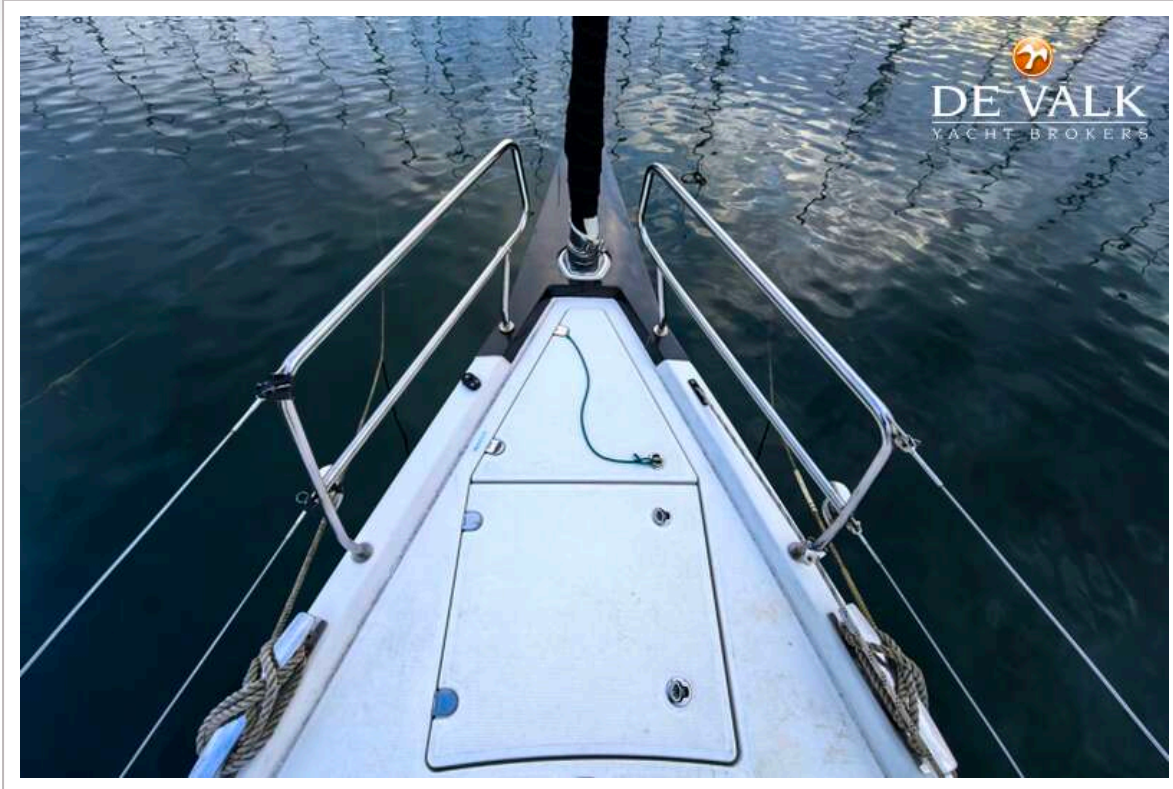
ELAN E6



ELAN E6

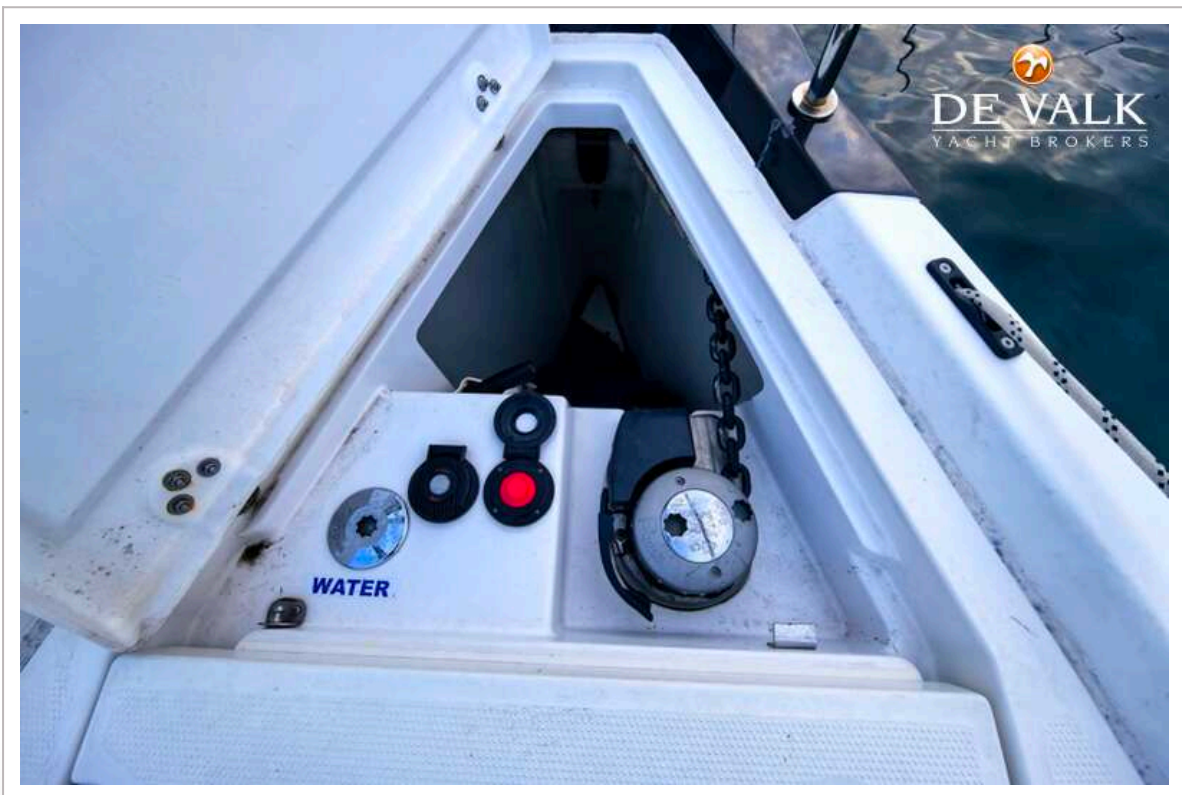


ELAN E6





ELAN E6



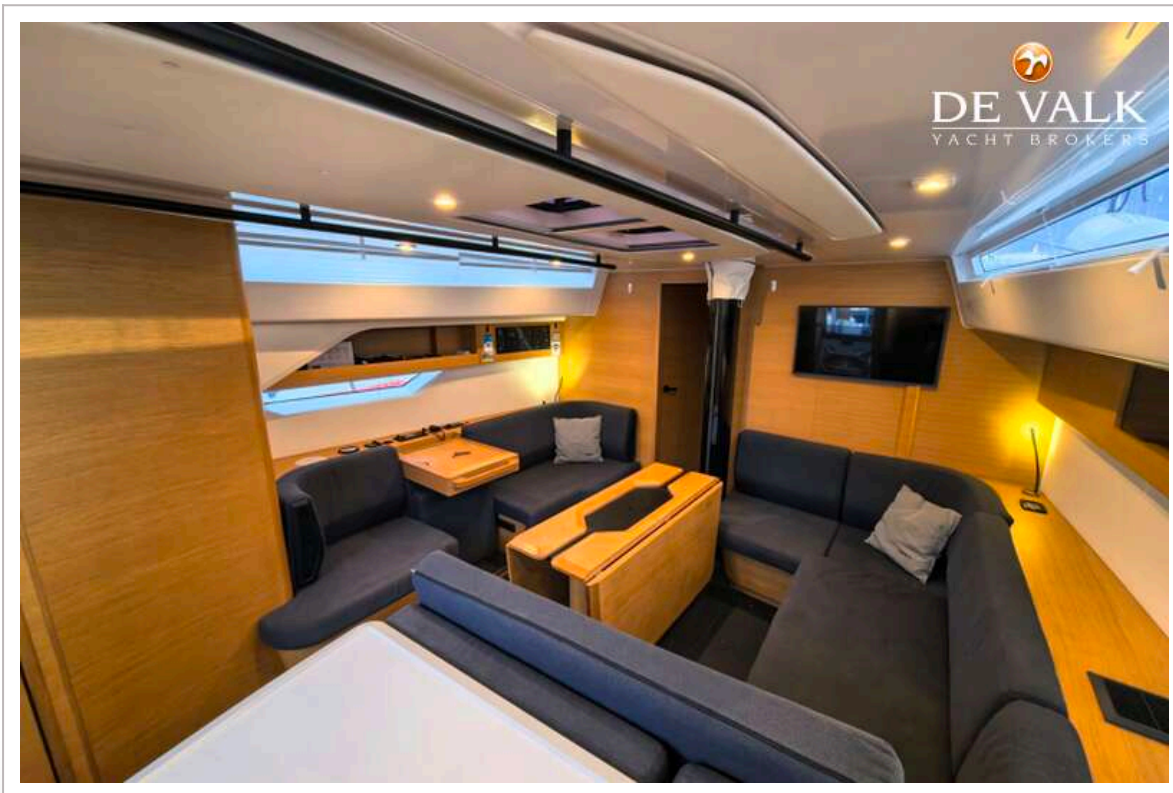
ELAN E6



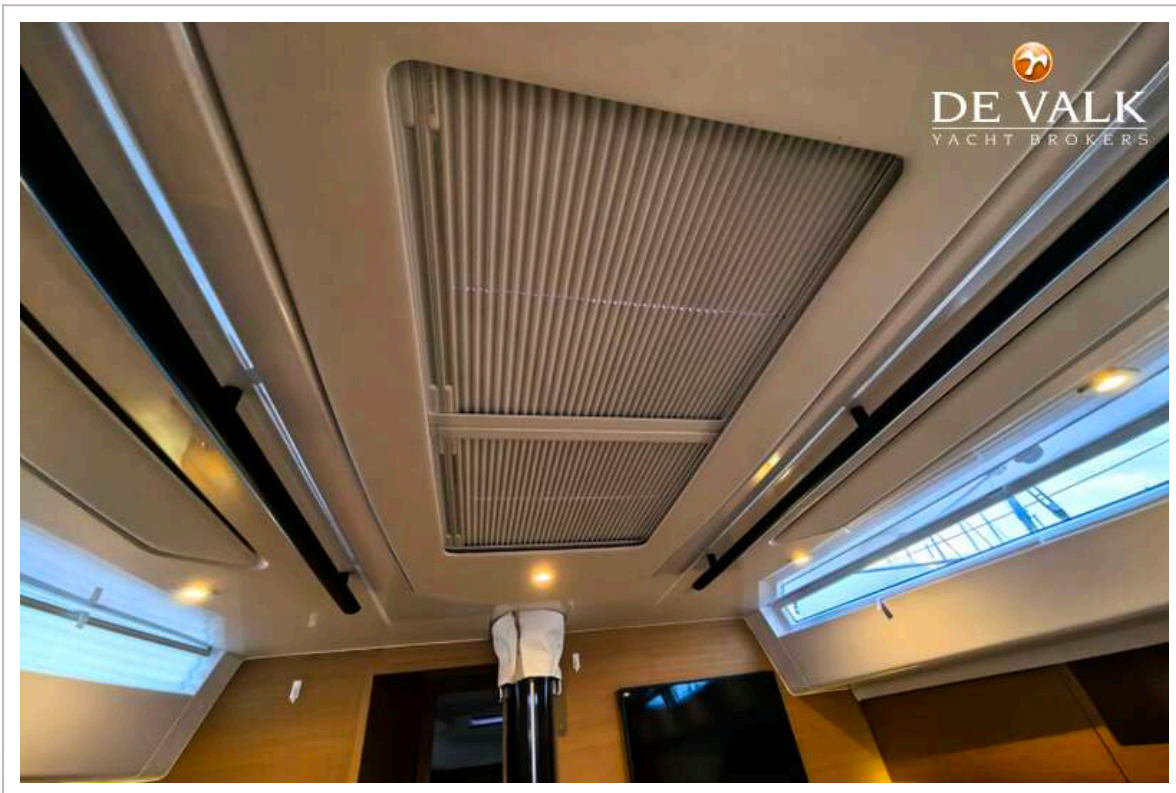
ELAN E6



ELAN E6

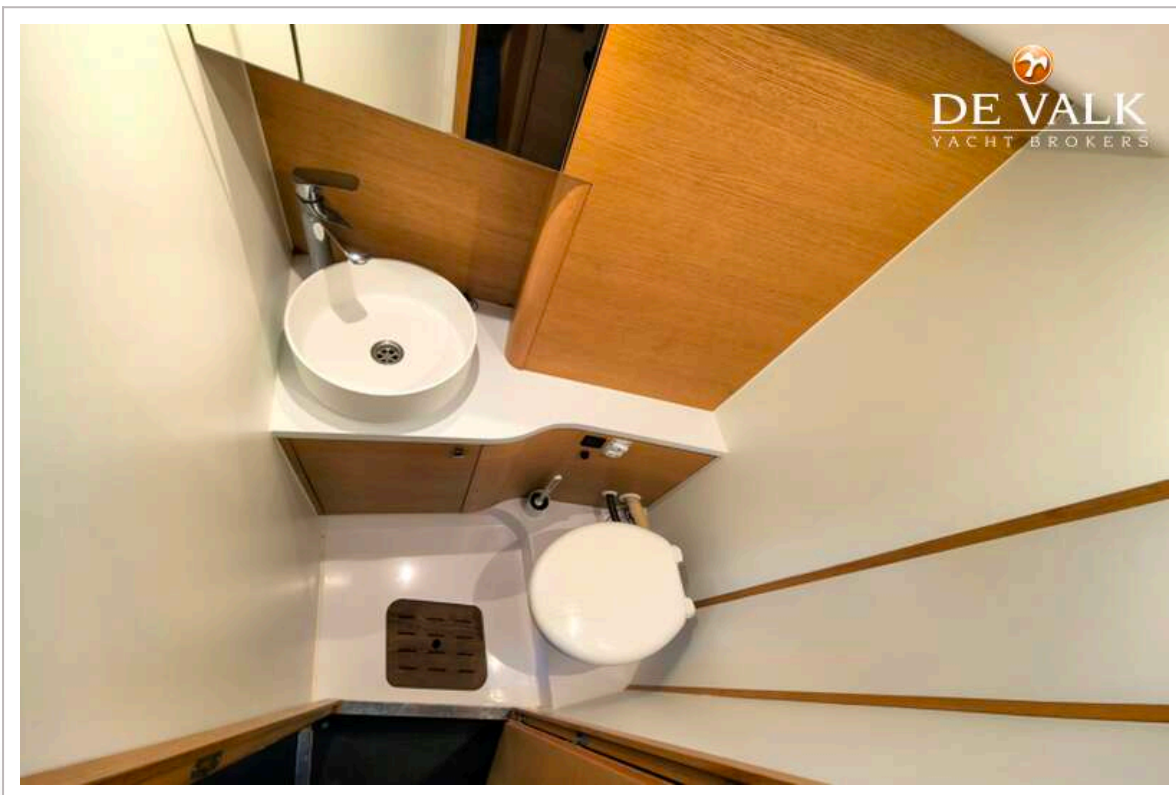
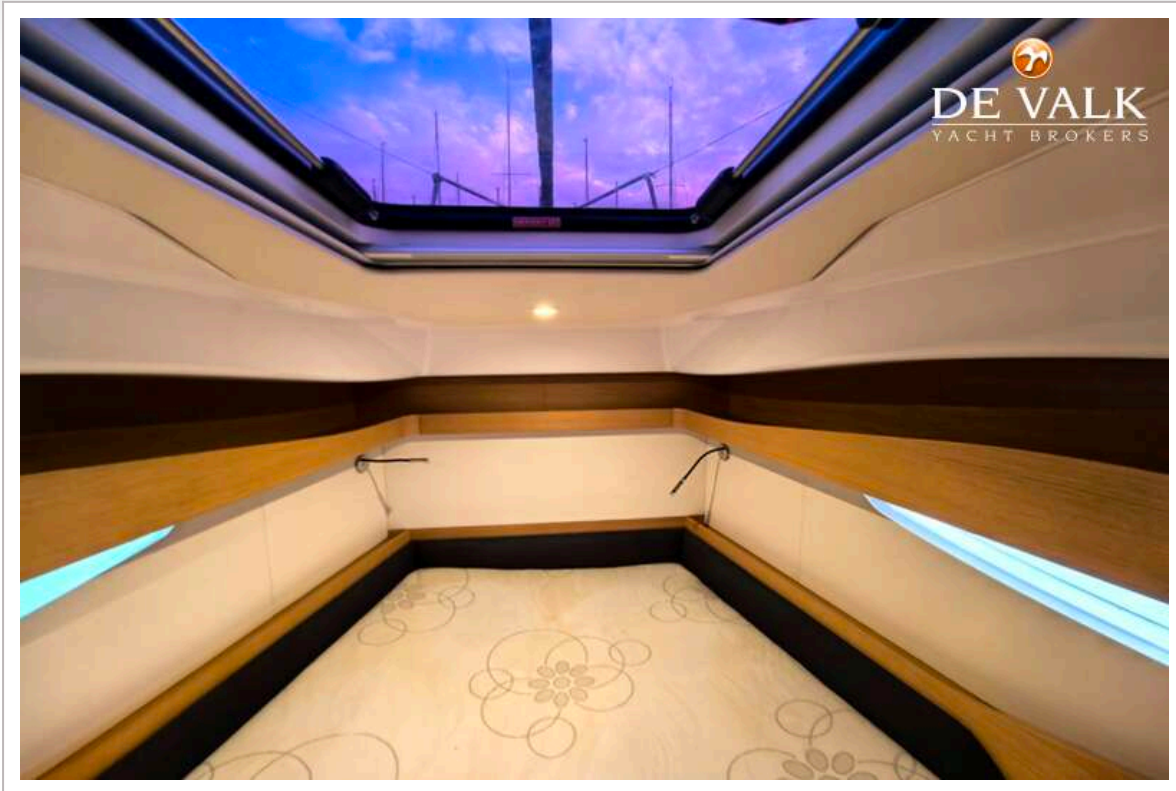


ELAN E6

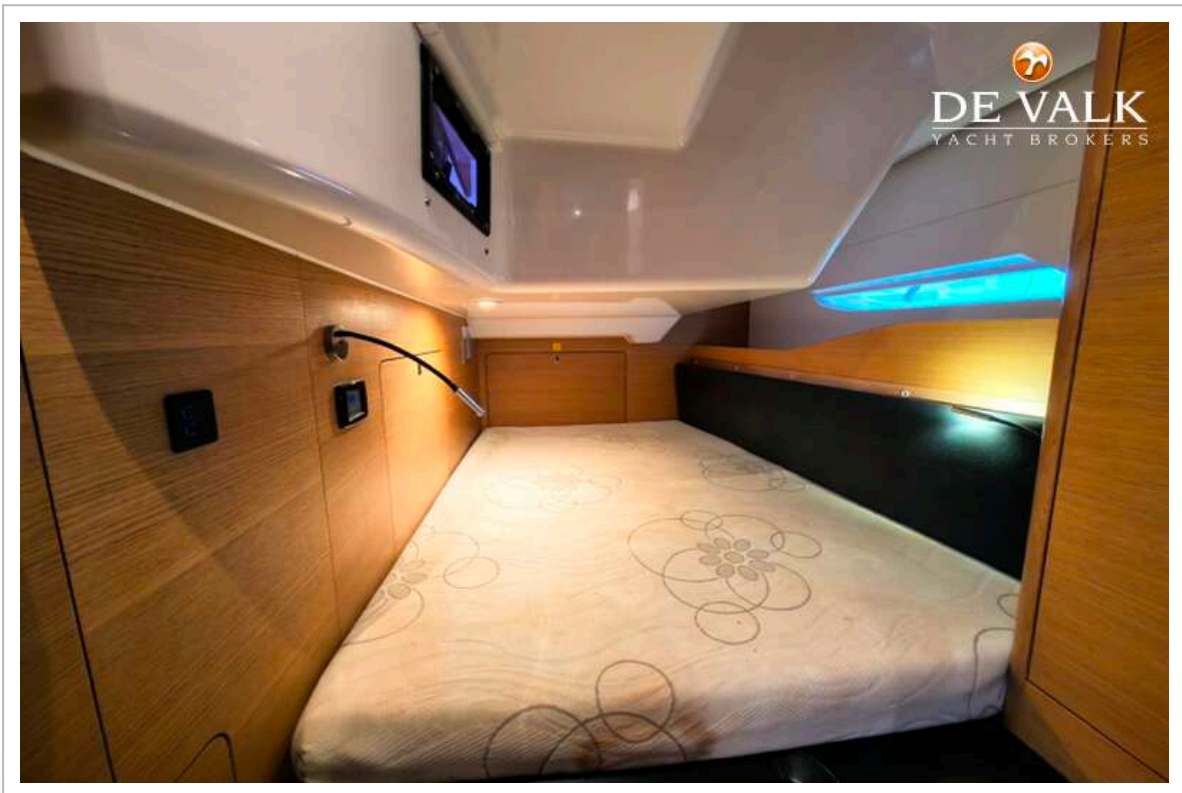
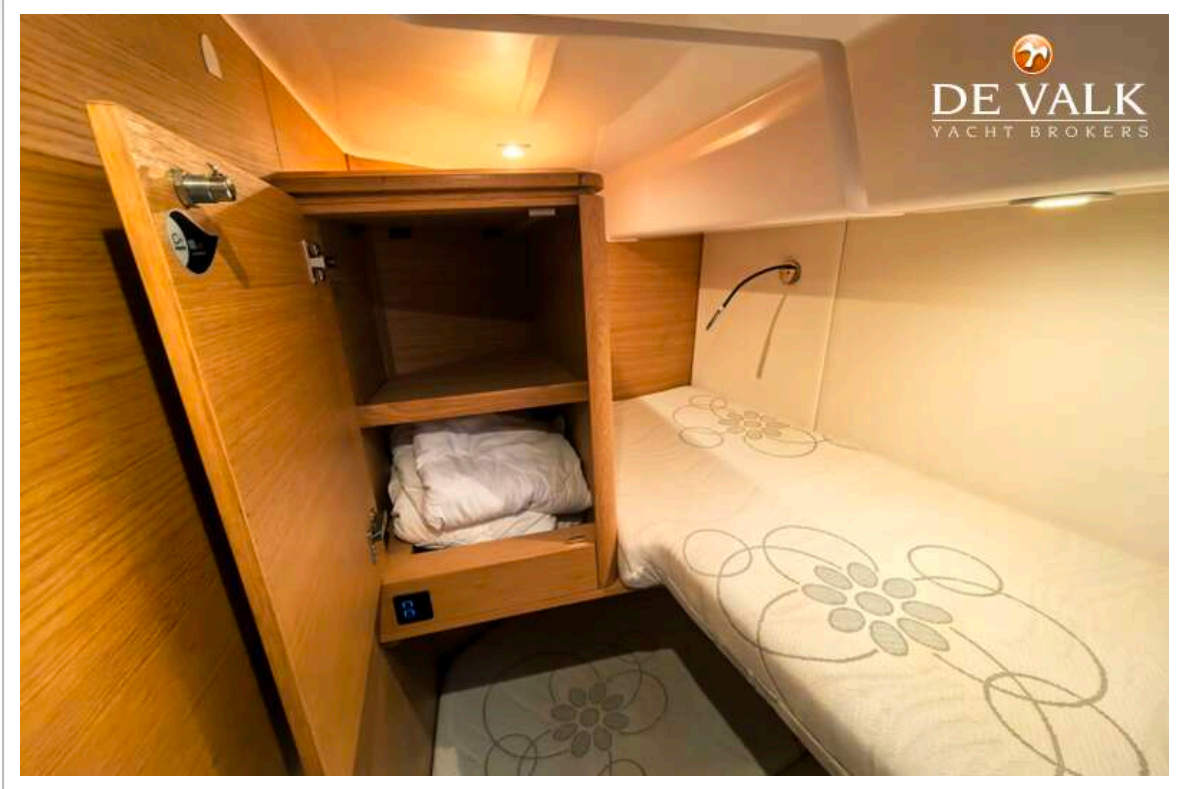


ELAN E6

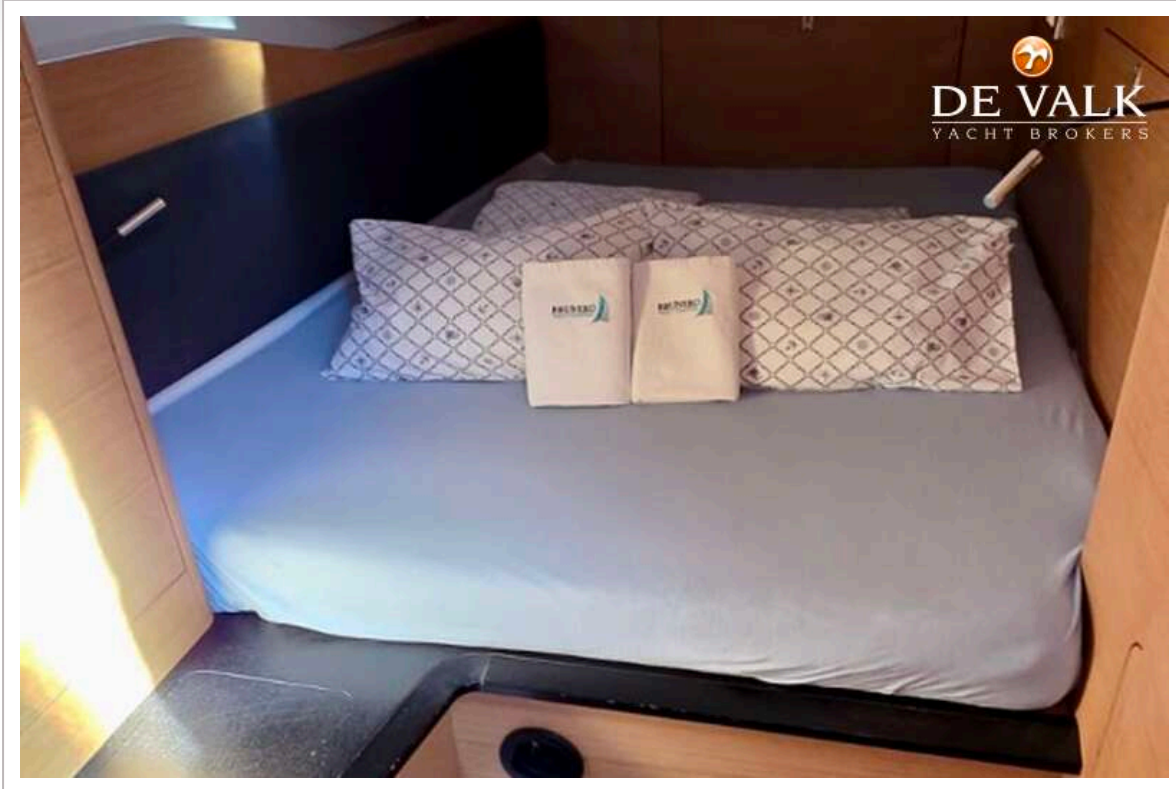




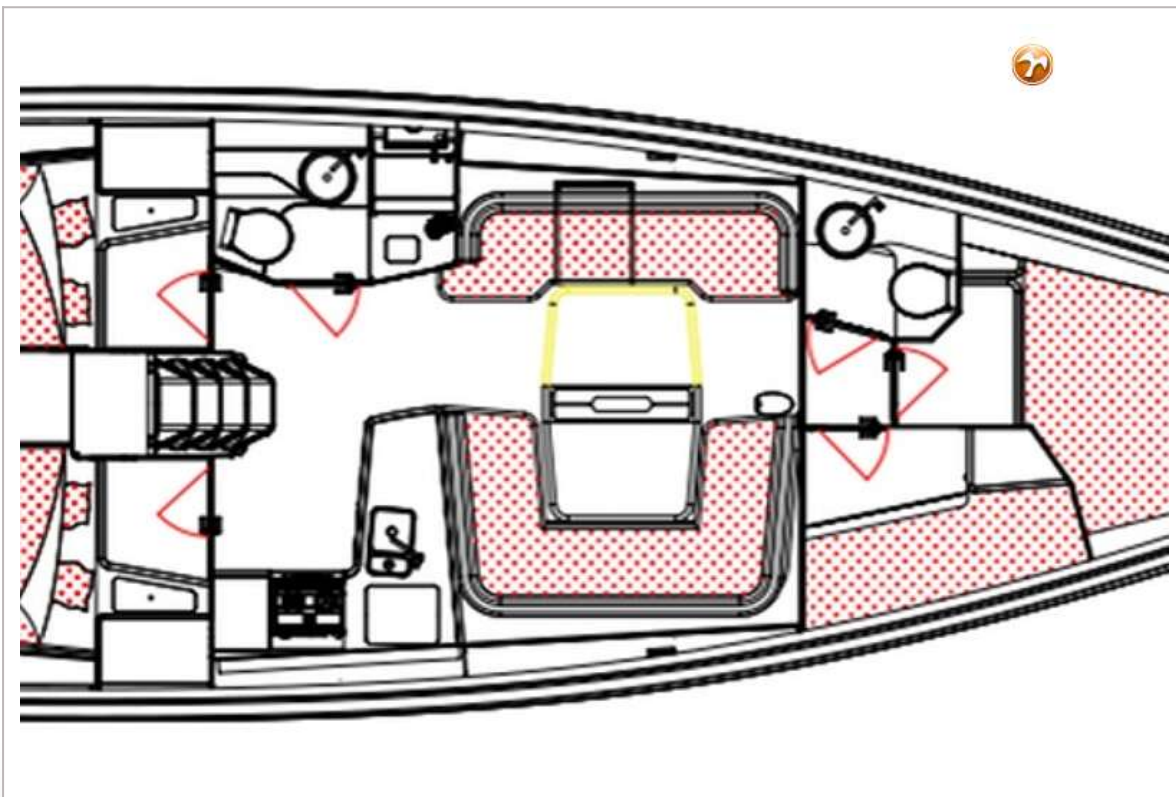
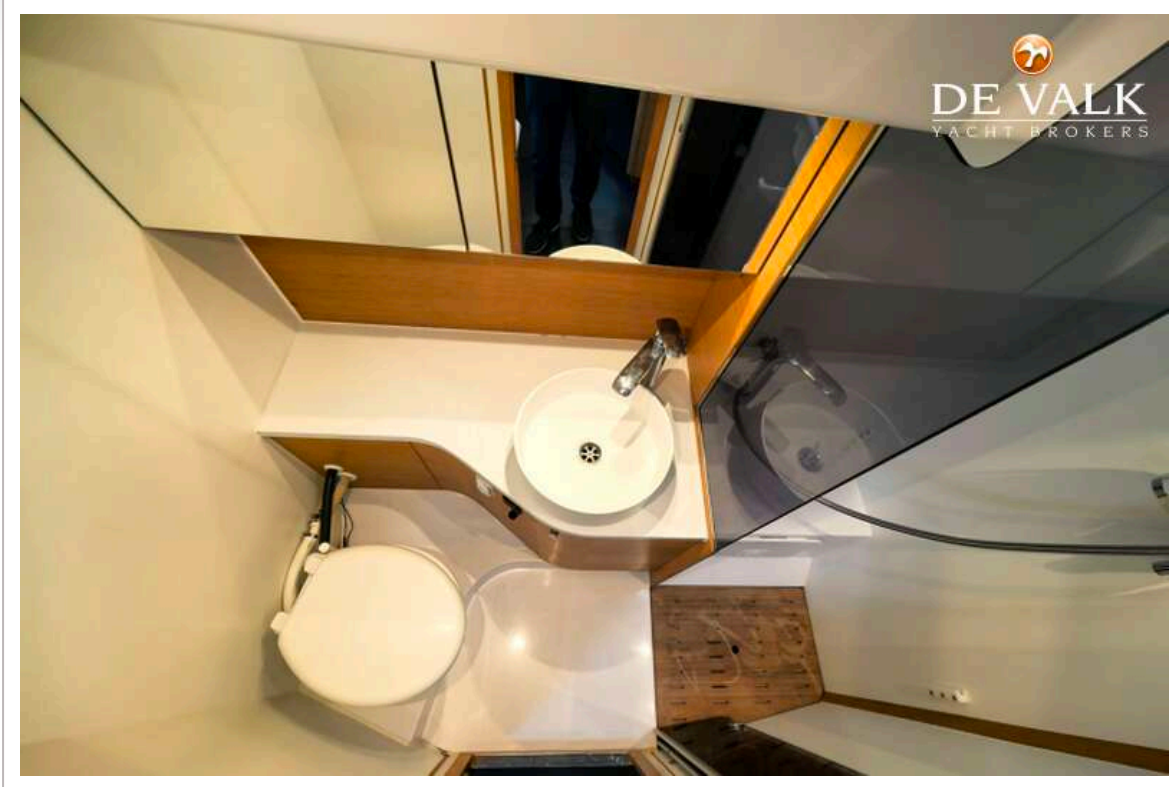
ELAN E6



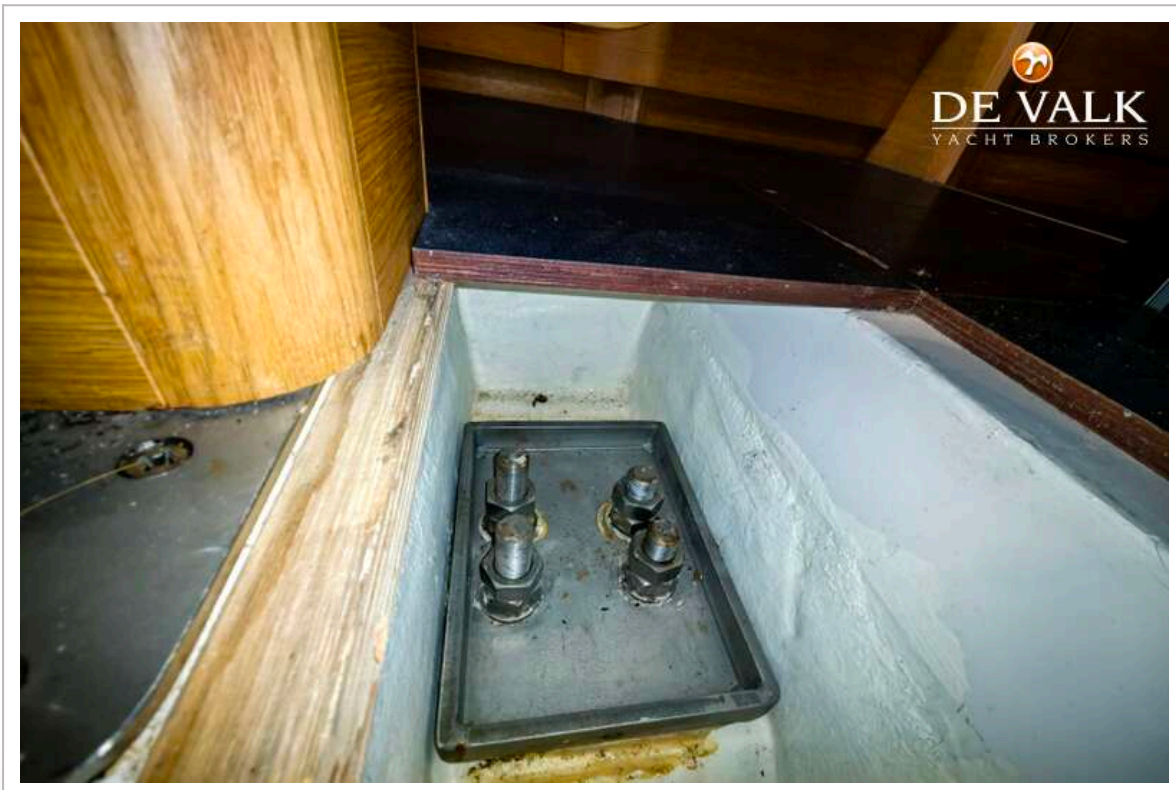
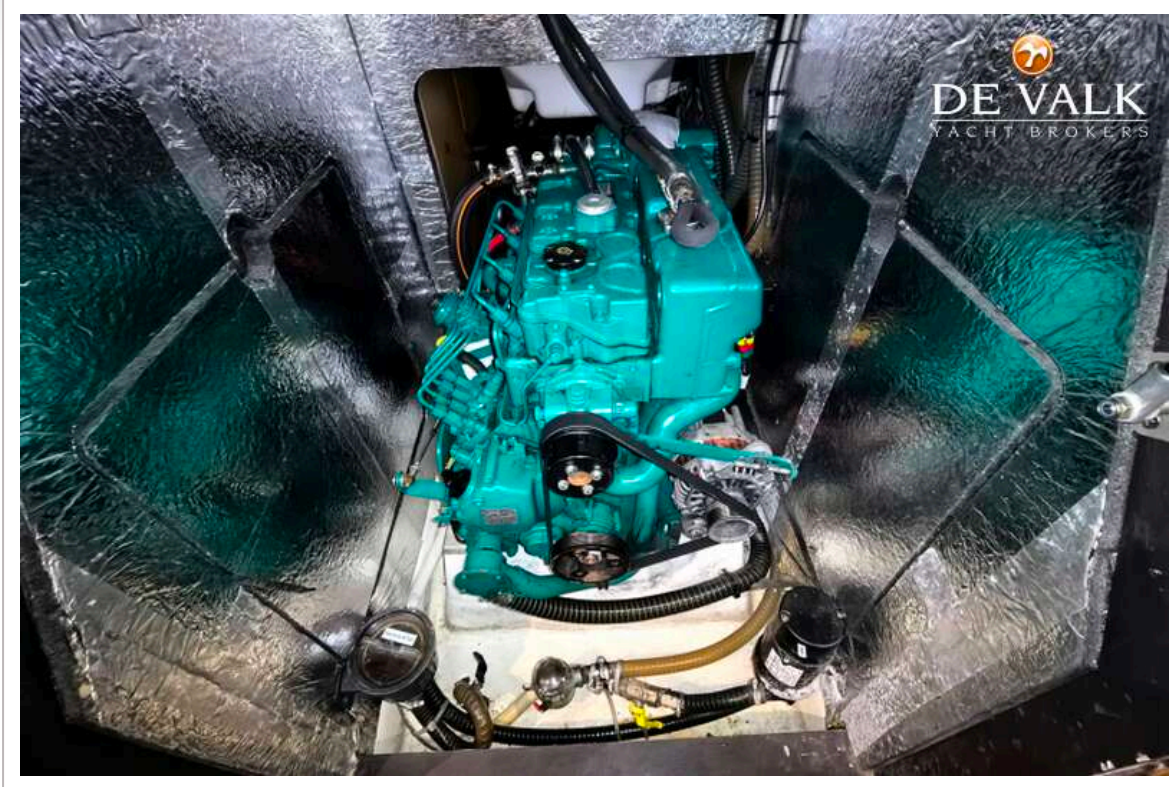
ELAN E6



ELAN E6



ELAN E6



ELAN E6

