



## OYSTER 47



**DE VALK**  
YACHT BROKERS

# OYSTER 47

## BROKER'S COMMENTS

2000 Oyster 47 'Josephine' - A beautiful centre cockpit blue water cruiser that can berth up to eight. In her current ownership, she has been well maintained and offers exceptional features for those looking to cruise in comfort. Laid out with three cabins, the master aft, a spacious double berth forward & a double bunk guest cabin on the portside. These are separated by the spacious saloon with a large dining area, dedicated navigation station and access to the well-equipped galley. This is an excellent all-around package for bluewater cruising or stately local sailing. Ready to go!

*Maarten de Kroon*

## SPECIFICATIONS

<b>Dimensions</b>	14.20 x 4.27 x 1.98 (m)	<b>Builder</b>	Landamores, Norfolk
<b>Built</b>	2000	<b>Cabins</b>	3
<b>Material</b>	GRP	<b>Berths</b>	8
<b>Engine(s)</b>	1 x Yanmar 4JH2 - DTBE diesel	<b>Hp/Kw</b>	88.00 (hp), 64.77 (kw)
<b>Asking price</b>	\$ 235.000 (VAT Not paid)	<b>Lying</b>	Malaysia

## CONTACT

<b>Sales office</b>	De Valk Asia	<b>Telephone</b>	+65 826 679 95
<b>Address</b>		<b>E-mail</b>	asia@devalk.nl
	AS		

## DISCLAIMER

These particulars are given in good faith as supplied but cannot be guaranteed.



## GENERAL

Model	OYSTER 47
Type	sailing yacht
LOA (m)	14,20
LWL (m)	11,58
Beam (m)	4,27
Draft (m)	1,98
Year built	2000
Builder	Landamores, Norfolk
Country	United Kingdom
Designer	Holman & Pye
Displacement (t)	16
CE norm	A
Hull material	GRP
Hull colour	Dark Blue
Hull shape	round-bilged
Keel type	fin keel with bulb
Superstructure material	GRP
Rubbing strake	aluminum
Deck material	GRP
Deck finish	teak
Superstructure deck finish	non-skid paint
Cockpit deck finish	teak
Antifouling (year)	2025
Dorades	yes
Window frame	stainless steel
Window material	tempered glass
Deckhatch	yes
Portholes	stainless steel
Insulation	foam
Fuel tank (litre)	GRP 487



Level indicator (fuel tank)	yes
Freshwater tank (litre)	GRP 700
Level indicator (freshwater)	yes
Blackwater tank (litre)	stainless steel 100
Blackwater tank extraction	deck extraction
Wheel steering	cable steering
Emergency tiller	yes
More info on paintwork	Hull paint has spots which need attention, RAL 5003

## ACCOMMODATION

Cabins	3
Berths	8
Interior	mahogany
Floor	teak
Headroom saloon (m)	2
Air-conditioning	reverse cycle airco 2x 16k BTUs
Navigation center	yes
Chart table	yes
Aft Cabin	yes
Dinette	yes
Convertible berth	yes
Galley	yes
Countertop	plastic
Sink	stainless steel
Cooker	calor gas 4 burner
Oven	Force Ten
Gas alarm	yes
Microwave	yes
Fridge	Needs service
Freezer	Needs service
Hot water system	220V + engine 54 litre



Water pressure system	electrical
Crockery	Original Oyster
Owners cabin	double bed
Bed length (m)	2
Wardrobe	hanging/drawers/shelves
Bathroom	en suite
Toilet	en suite
Toilet system	electric Needs service
Wash basin	in the bathroom
Shower	en suite
Guest cabin 1	v-bed
Bed length (m)	2
Wardrobe	hanging/drawers/shelves
Bathroom	shared
Toilet	shared
Toilet system	electric Needs service
Wash basin	in the bathroom
Shower	shared
Guest cabin 2	bunk bed
Wardrobe	hanging/drawers/shelves
Bathroom	shared
Toilet	shared
Toilet system	electric
Wash basin	in the bathroom
Shower	shared

## MACHINERY

No of engines	1
Make	Yanmar
Type	4JH2 - DTBE
HP	88



<b>kW</b>	64.77
<b>Fuel</b>	diesel
<b>Year installed</b>	2000
<b>Maximum speed (kn)</b>	10
<b>Cruising speed (kn)</b>	7
<b>Consumption (l/hr)</b>	5
<b>Engine hours</b>	2362
<b>Engine cooling system</b>	freshwater heat exchanger
<b>Drive</b>	shaft
<b>Shaft seal</b>	yes
<b>Engine controls</b>	bowden cable
<b>Gearbox</b>	mechanical Yanmar
<b>Engine controls</b>	bowden cable
<b>Bowthruster</b>	electric Sleipner SP95 12VDC
<b>Gearbox</b>	mechanical
<b>Exhaust</b>	watercooled
<b>Propeller type</b>	feathering
<b>Propeller blades</b>	3
<b>Propeller shaft material</b>	stainless steel
<b>Shaft lubrication</b>	water
<b>Manual bilge pump</b>	yes
<b>Electric bilge pump</b>	2x
<b>Bilge alarm</b>	yes
<b>Generator</b>	HFL Marriner 6kW
<b>Running hours generator</b>	224
<b>Start battery</b>	12v AGM
<b>Service battery</b>	4x AGM (2025)
<b>Bowthruster battery</b>	2x AGM 12v
<b>Battery charger</b>	Mastervolt MASS 12/80/1200
<b>Shorepower</b>	with cable Including 220v to 110v adapter
<b>Watermaker</b>	Spectra 380C 12VDC, needs service.
<b>Extra info</b>	Yacht's AC system is 110VAC



## Extra info

Comes with 220 VAC to 110 VAC converter

## NAVIGATION

Compass

yes

Multi control display

Broken

Depth sounder

Raytheon ST60, screens have sun burn

Log

Raytheon ST60, screens have sun burn

Windset

Raymarine i60 (2024)

VHF

ICOM M402 + remote mic HM-127W + speaker

Autopilot

Raymarine P70S (2024)

Rudder angle indicator

At autopilot

Plotter

Raymarine Element 9S

AIS receiver

Digital

Radio receiver

ICOM M710 HF

Navigation lights

yes

## EQUIPMENT

Sprayhood

(2024)

Cockpit cover

(2024)

Bimini

(2024)

Winter cover

yes

Cockpit cushions

(2024)

Cockpit table

yes

Bathing platform

yes

Boarding ladder

stainless steel

Deck shower

yes

Anchor

CQR Plough

Anchor chain

Stainless steel 10mm, 60m

Anchor 2

Fortress FX-55

Chain counter

Need service

Windlass

electrical Lewmar



Capstan	yes
Dinghy	inflatable Twin Air V 250
Outboard	Suzuki 15 HP 2 stroke and MinnKota electric
Outboard support	yes
Sea railing	wire
Grab rail (superstructure)	stainless steel
Railing side opening gates	Port & starboard
Pushpit	Aft with teak seats
Lifejackets	2x inflatable, 1x foam
Safety harness	yes
Rope cutter	yes
Horn	Electric
Binocular	yes
Radar reflector	yes
Fenders	8x
Mooring lines	(2025)
Spare parts	yes
Tools	yes
Radio-cd player	yes
Surround Sound System	yes
Cockpit speakers	Bose
Speakers in salon	Bose
Fire extinguisher	yes
Latest extinguisher survey	Need service
Auto extinguisher system	In engine room, needs service

## RIGGING

Rigging	cutter
Standing rigging	wire Original
Brand mast	Hood Stoway
Material mast	aluminium





<b>Spreaders</b>	2 pair
<b>Keel stepped mast</b>	yes
<b>Mainsail</b>	Dacron 2019, hardly used
<b>Stoway mast</b>	Electric furling
<b>Main staysail</b>	Removable forestay for storm jib
<b>Genoa</b>	Furling dacron 2019, hardly used
<b>Genoa furler</b>	Harken
<b>Spinnaker</b>	In sniffer/sock
<b>Trysail</b>	Storm trysail
<b>Reefing System</b>	main in-mast furling
<b>Backstay adjuster</b>	hydraulic
<b>Boomvang</b>	mechanical
<b>Primary sheet winch</b>	2x Lewmar 58 CEST electric
<b>Multifunctional winches</b>	1x Anderson 46 ST electric
<b>Spi-pole</b>	aluminium



## OYSTER 47





## OYSTER 47





# OYSTER 47



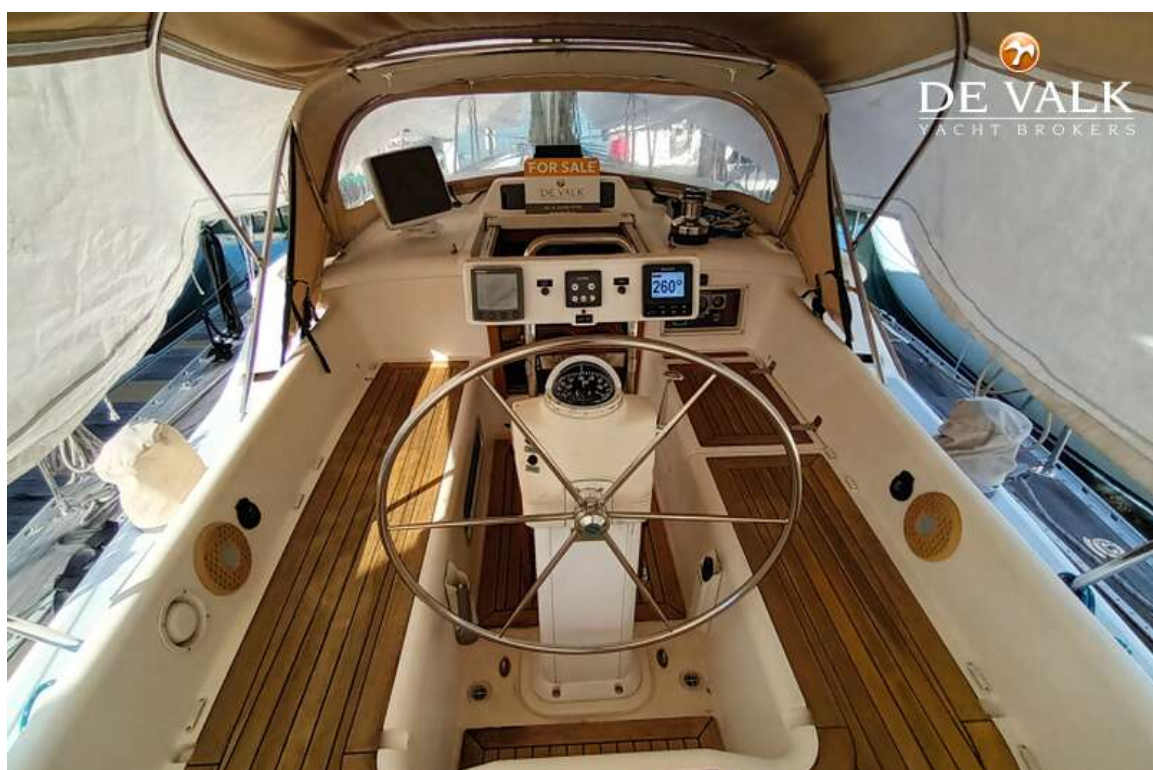


## OYSTER 47





# OYSTER 47

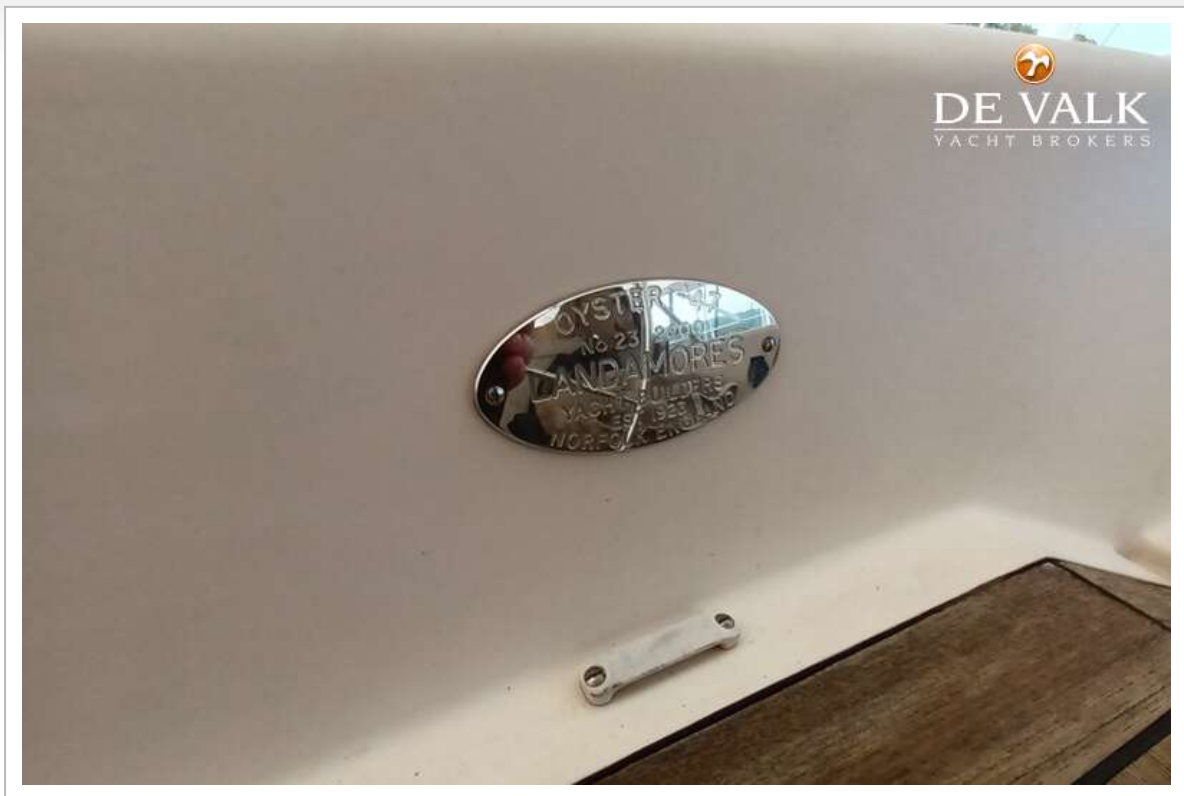


## OYSTER 47





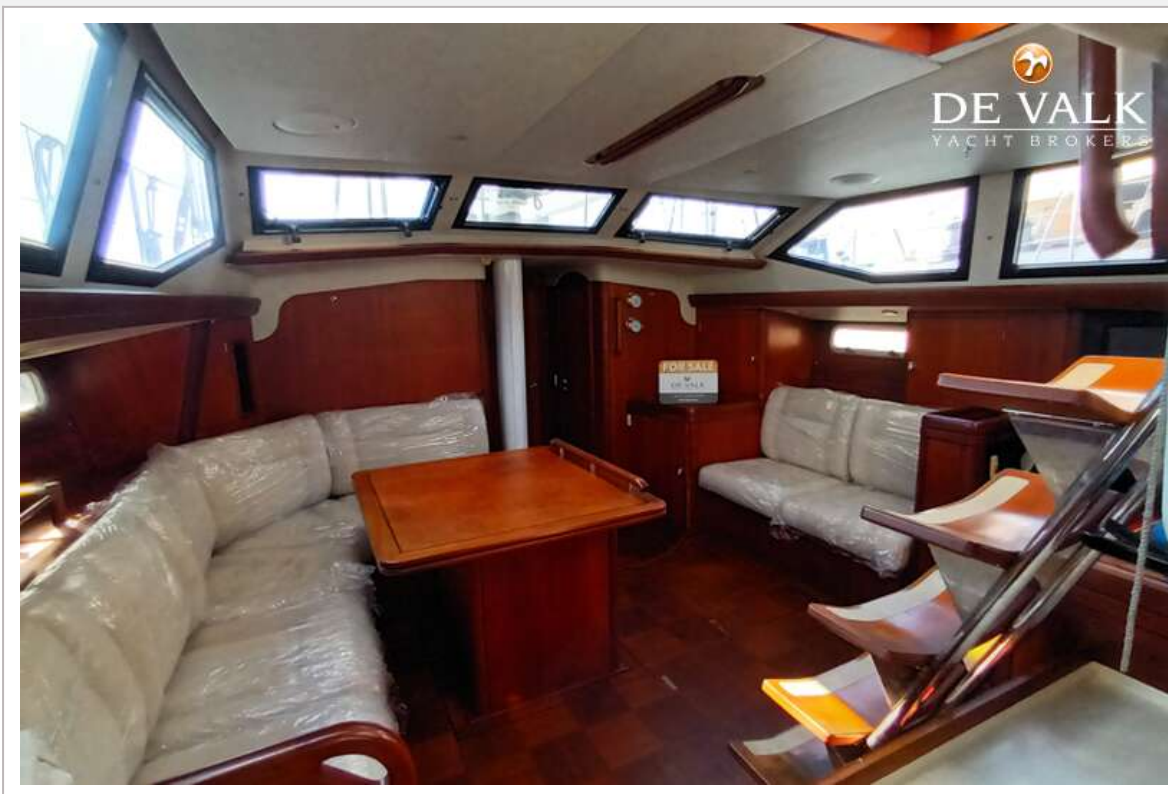
# OYSTER 47







## OYSTER 47

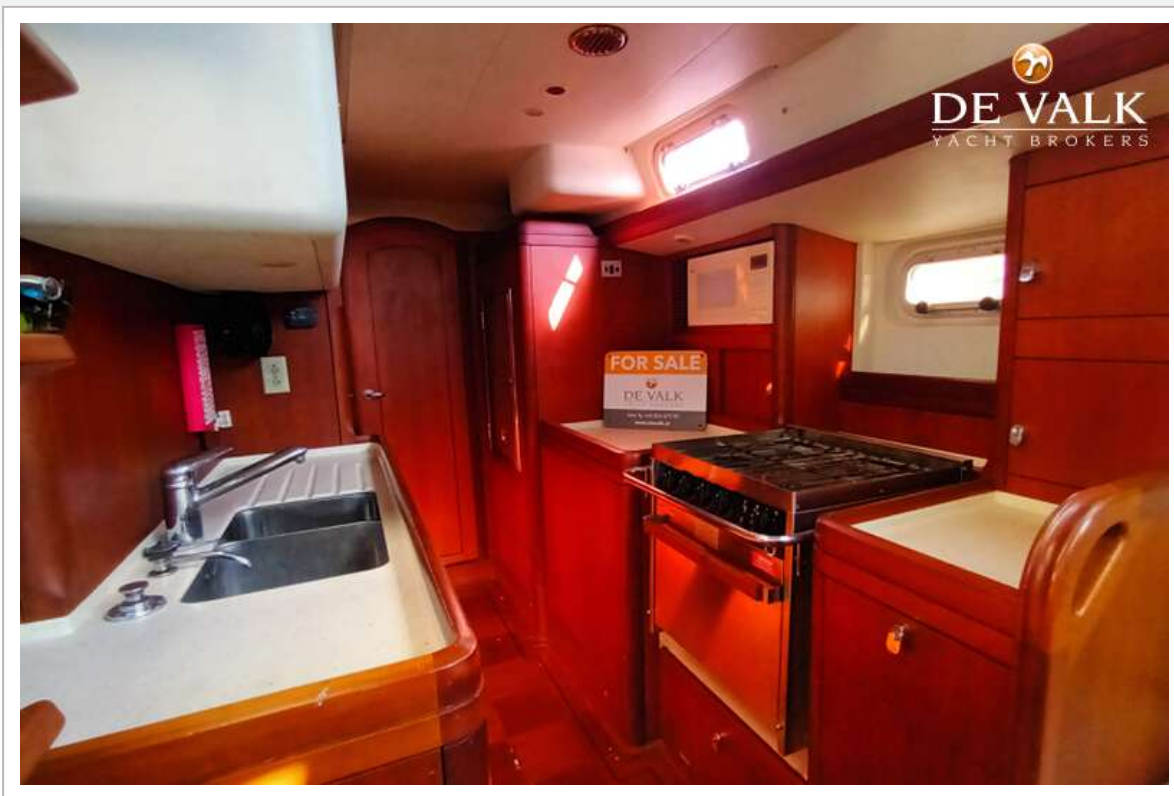




# OYSTER 47



# OYSTER 47





# OYSTER 47

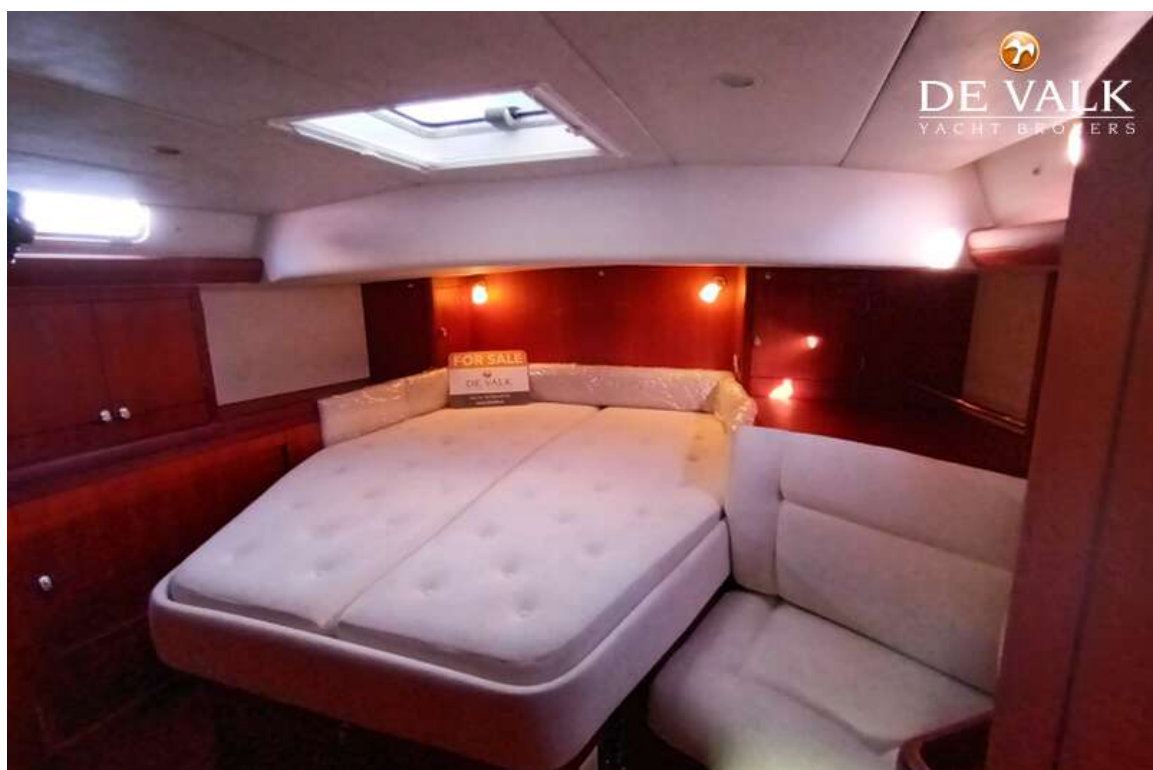
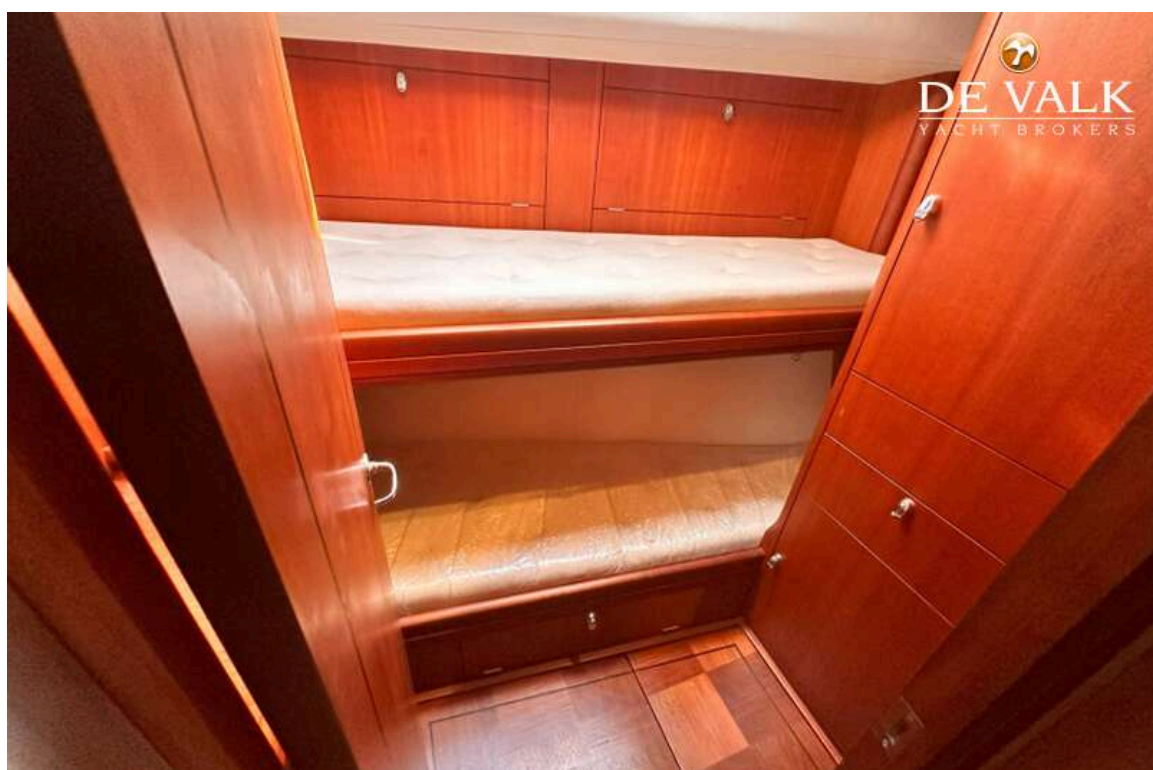


## OYSTER 47





## OYSTER 47

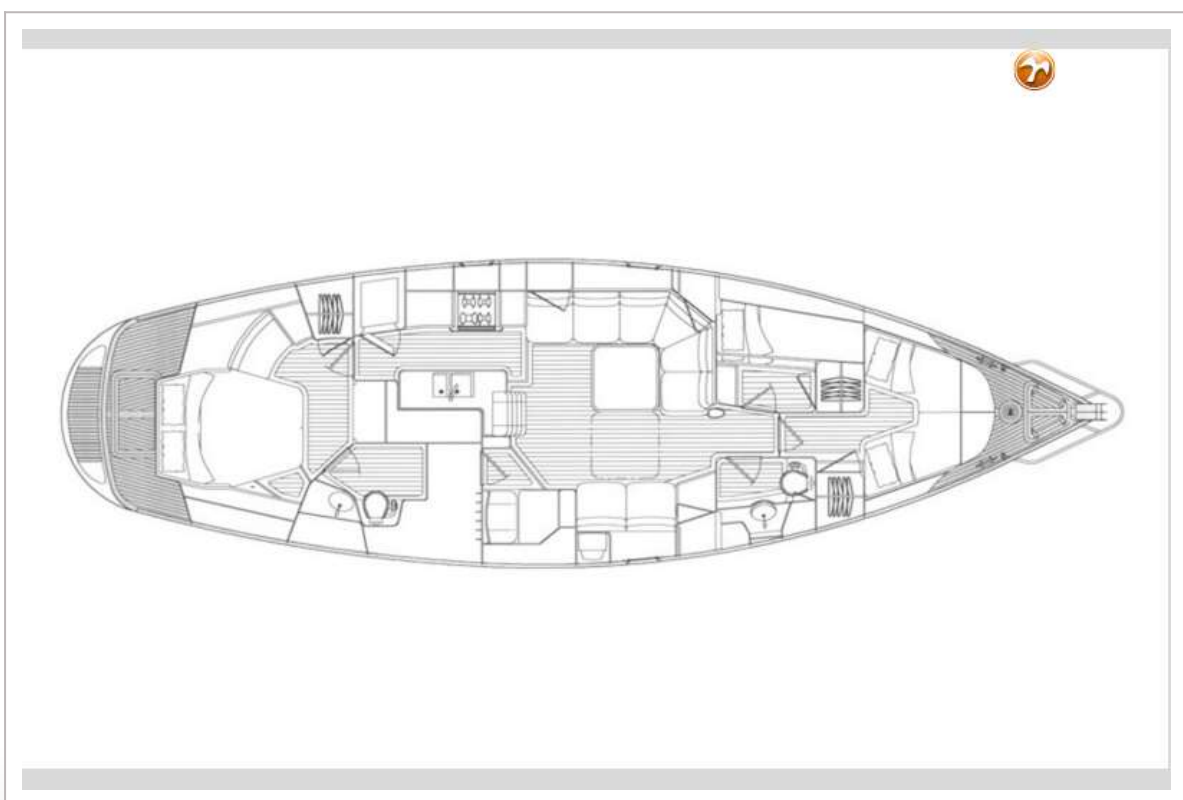


## OYSTER 47





# OYSTER 47



# OYSTER 47

