



BENETEAU ANTARES 13.80

# BENETEAU ANTARES 13.80

## BROKER'S COMMENTS

The Antares 13.8 has been privately used and well maintained. It has not been heavily driven in the last two years. The engines have been serviced and the batteries replaced last year. Overall, the boat is in very good condition for its age.

*Filip Mimica*

## SPECIFICATIONS

<b>Dimensions</b>	13.68 x 4.30 x 1.15 (m)	<b>Builder</b>	Beneteau
<b>Built</b>	2005	<b>Cabins</b>	3
<b>Material</b>	GRP	<b>Berths</b>	6
<b>Engine(s)</b>	2 x CUMMINS QSC8.3 500HO diesel	<b>Hp/Kw</b>	2 x 494.00 (hp), 363.58 (kw)
<b>Asking price</b>	€ 149.000 (VAT Paid)	<b>Lying</b>	Croatia

## CONTACT

<b>Sales office</b>	De Valk Dalmatia	<b>Telephone</b>	0031 653 299 244
<b>Address</b>	Ul. Velimira Skorpika 22000 Sibenik HR	<b>E-mail</b>	dalmatia@devalk.nl

## DISCLAIMER

These particulars are given in good faith as supplied but cannot be guaranteed.



# BENETEAU ANTARES 13.80

## GENERAL

Model	BENETEAU ANTARES 13.80
Type	motor yacht
LOA (m)	13,68
Beam (m)	4,30
Draft (m)	1,15
Year built	2005
Builder	Beneteau
Country	France
Displacement (t)	29,9
Gross tonnage	11,88
Hull material	GRP
Hull colour	Blue
Deck material	Fexiteek 2024
Deck finish	Fexiteek 2024
Cockpit deck finish	Fexiteek 2024
Antifouling (year)	2024
Flybridge	yes
Flybridge cover	yes
Flybridge suncover	yes
Fuel tank (litre)	1500l
Level indicator (fuel tank)	yes
Freshwater tank (litre)	2x320l
Level indicator (freshwater)	yes
Blackwater tank (litre)	85l
Wheel steering	yes
Inside helm position	yes
Flybridge helm position	yes

## ACCOMMODATION

Cabins	3
--------	---



# BENETEAU ANTARES 13.80

<b>Berths</b>	6
<b>Layout</b>	3 cabins + 2 toilets
<b>Saloon</b>	yes
<b>Air-conditioning</b>	yes
<b>Navigation center</b>	yes
<b>Opening door to cockpit</b>	yes
<b>Sink</b>	2x Steel
<b>Cooker</b>	Electrolux
<b>Fridge</b>	yes
<b>Hot water system</b>	yes
<b>Water pressure system</b>	yes
<b>Dishwasher</b>	Candy
<b>Hot water tap</b>	yes
<b>Coffee maker</b>	Nespresso
<b>Toilet</b>	In corridor
<b>Toilet system</b>	Electric
<b>Shower</b>	yes
<b>Toilet</b>	In owners cabin
<b>Toilet system</b>	Electric
<b>Shower</b>	yes
<b>Flybridge</b>	yes
<b>Extra info</b>	On flybridge is a fridge, storage and speakers

## MACHINERY

<b>No of engines</b>	2
<b>Make</b>	CUMMINS
<b>Type</b>	QSC8.3 500HO
<b>HP</b>	494
<b>kW</b>	363.58
<b>Fuel</b>	diesel
<b>Year installed</b>	2005



Engine hours	2144
Bowthruster	Max power
Manual bilge pump	yes
Electric bilge pump	Jabsco
Bilge alarm	yes
Generator	Onan E-QD
Batteries	yes
Start battery	2x Duracell professional EFB190
Service battery	2x Duracell professional EFB190
Generator battery	Ciak starter cs55d, 12V
Bowthruster battery	yes
Battery monitor	yes
Battery charger	Victron battery charger
Shorepower	yes
Trimtabs	Lenco

## NAVIGATION

Compass on flybridge	yes
Depth sounder	Raymarine
Depth sounder/log	Raymarine
VHF	Navman 7100
Autopilot	Raymarine
Plotter	Raymarine E120, on Flybridge E80
Radio receiver	yes
Navigation lights	yes
Searchlight	yes
Extra info	yes

## EQUIPMENT

Fixed windscreen	yes
Cockpit cover	yes



# BENETEAU ANTARES 13.80

<b>Bimini</b>	yes
<b>Sun awning</b>	yes
<b>Cockpit cushions</b>	yes
<b>Cockpit table</b>	Teak
<b>Cockpit chairs</b>	yes
<b>Bathing platform</b>	Teak fixed, holders for dingy
<b>Boarding ladder</b>	yes
<b>Bow ladder</b>	yes
<b>Gangway</b>	Hydraulic
<b>Deck shower</b>	yes
<b>Anchor</b>	Delta
<b>Anchor chain</b>	yes
<b>Chain counter</b>	On flybridge
<b>Windlass</b>	yes
<b>Dinghy</b>	New, packed
<b>Outboard</b>	Hidea 5hp
<b>Wiper</b>	yes
<b>TV</b>	Digihome
<b>TV receiver</b>	yes
<b>Radio</b>	Fusion/Prioner
<b>Sub-woofer</b>	Fusion
<b>Cockpit speakers</b>	And flybridge. Fusion



# BENETEAU ANTARES 13.80



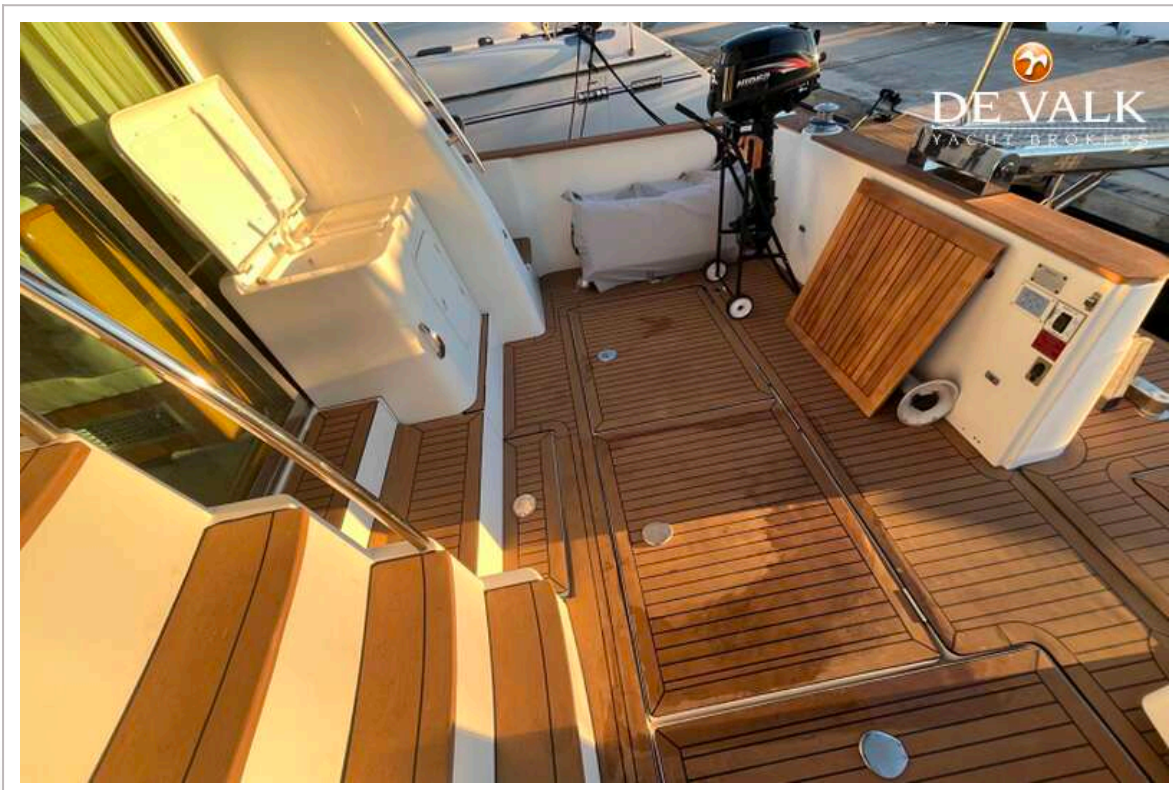
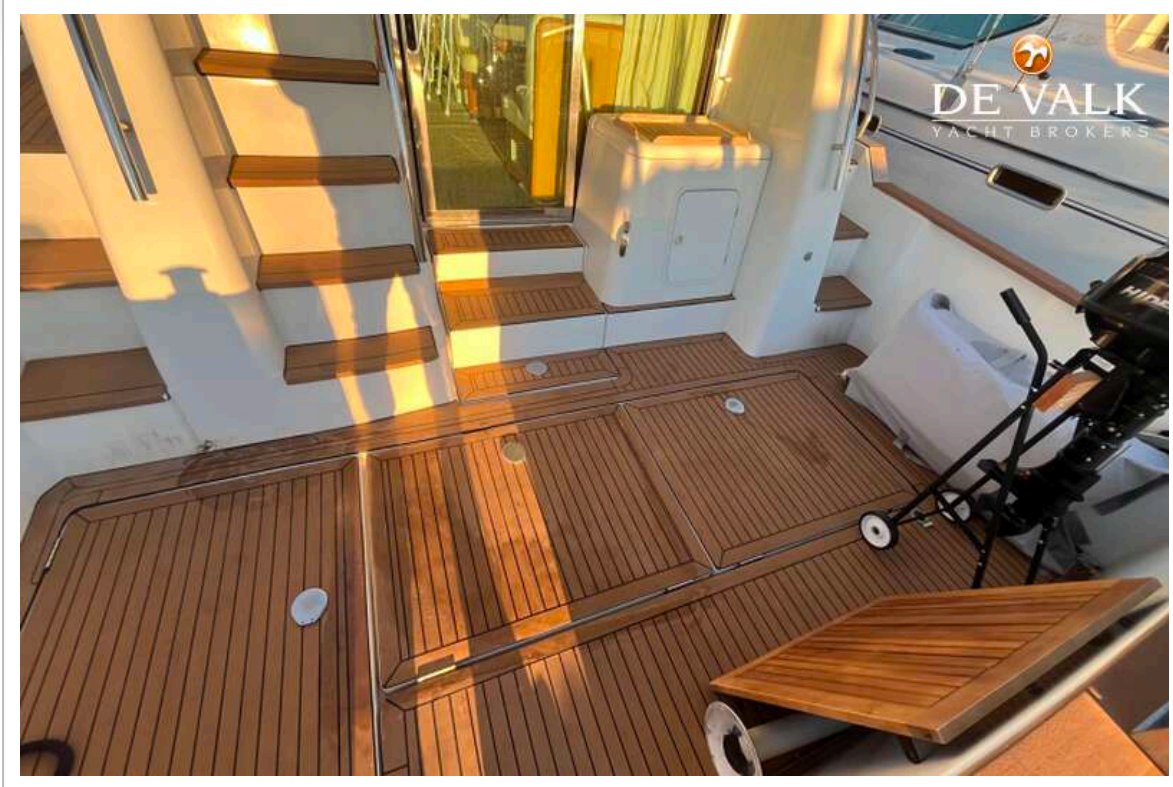
# BENETEAU ANTARES 13.80



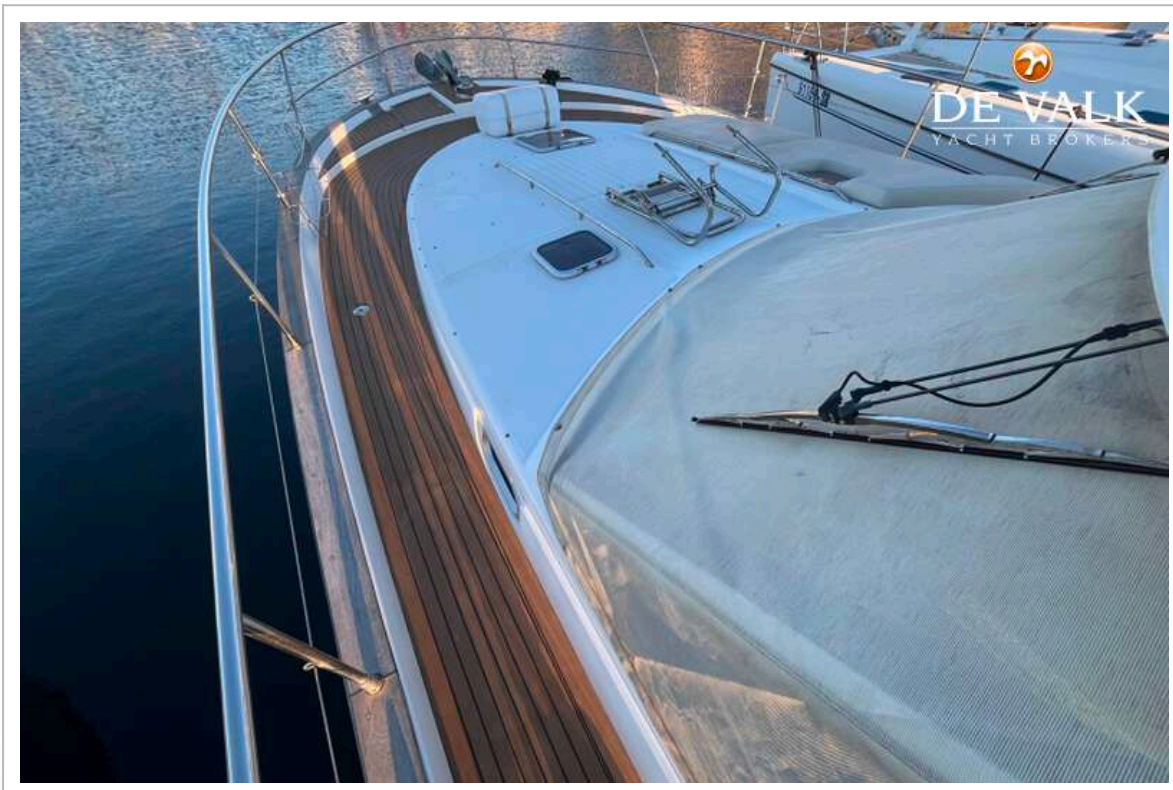
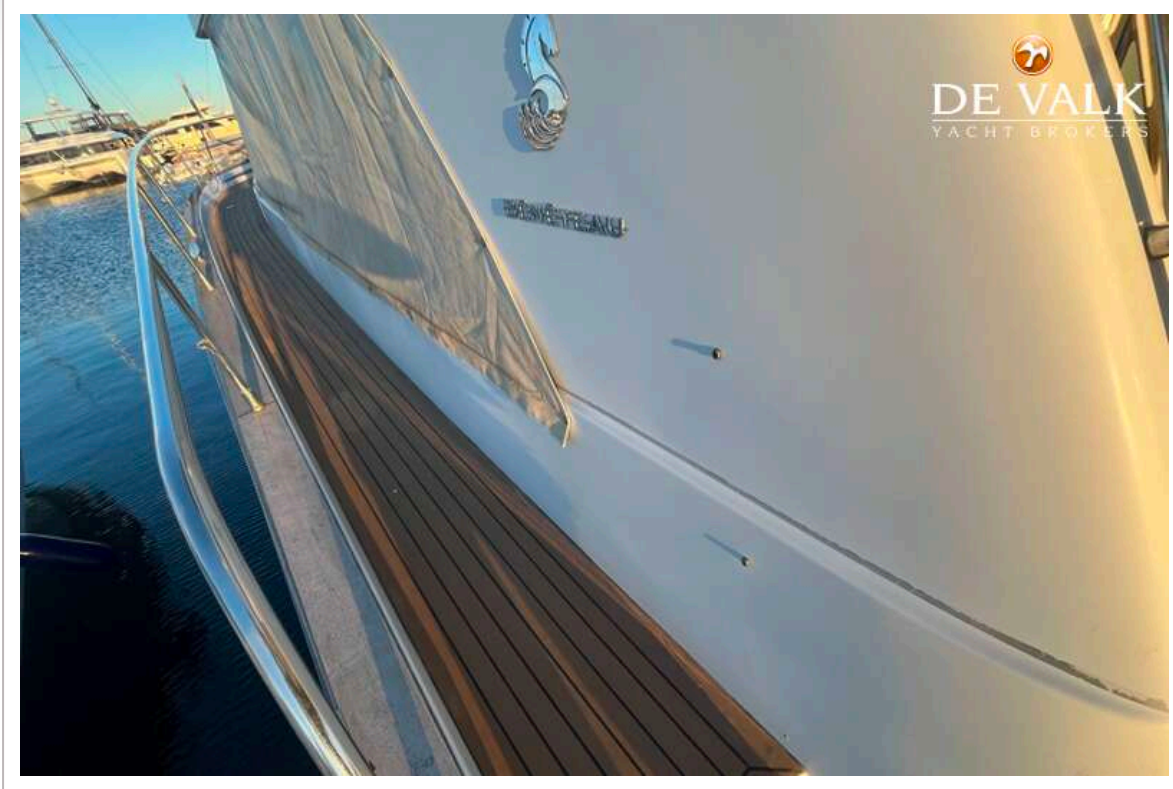
# BENETEAU ANTARES 13.80



# BENETEAU ANTARES 13.80



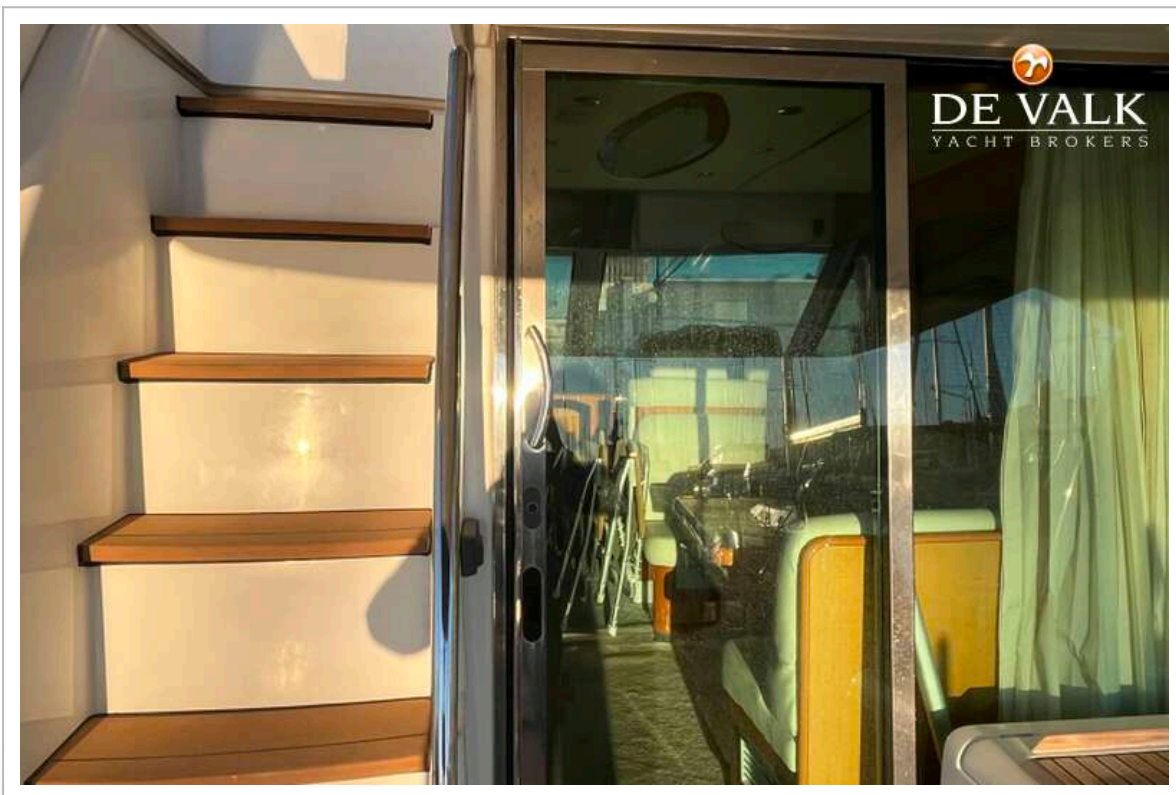
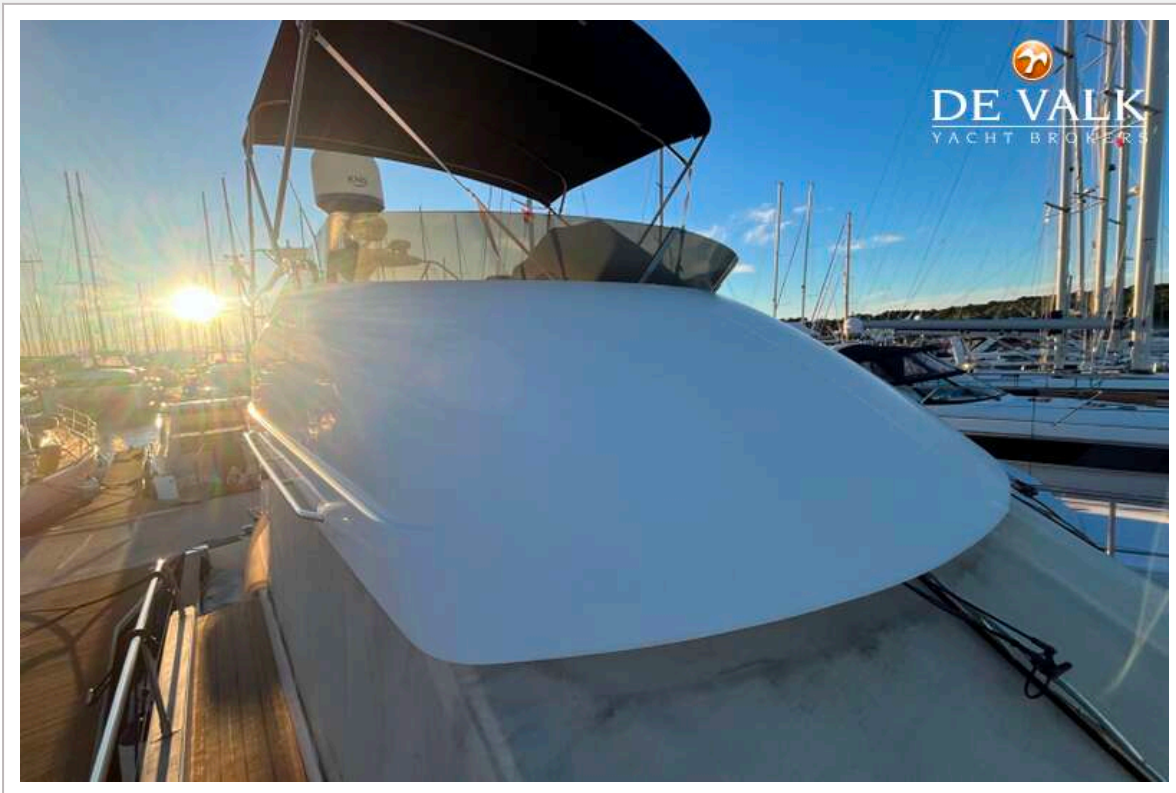
# BENETEAU ANTARES 13.80



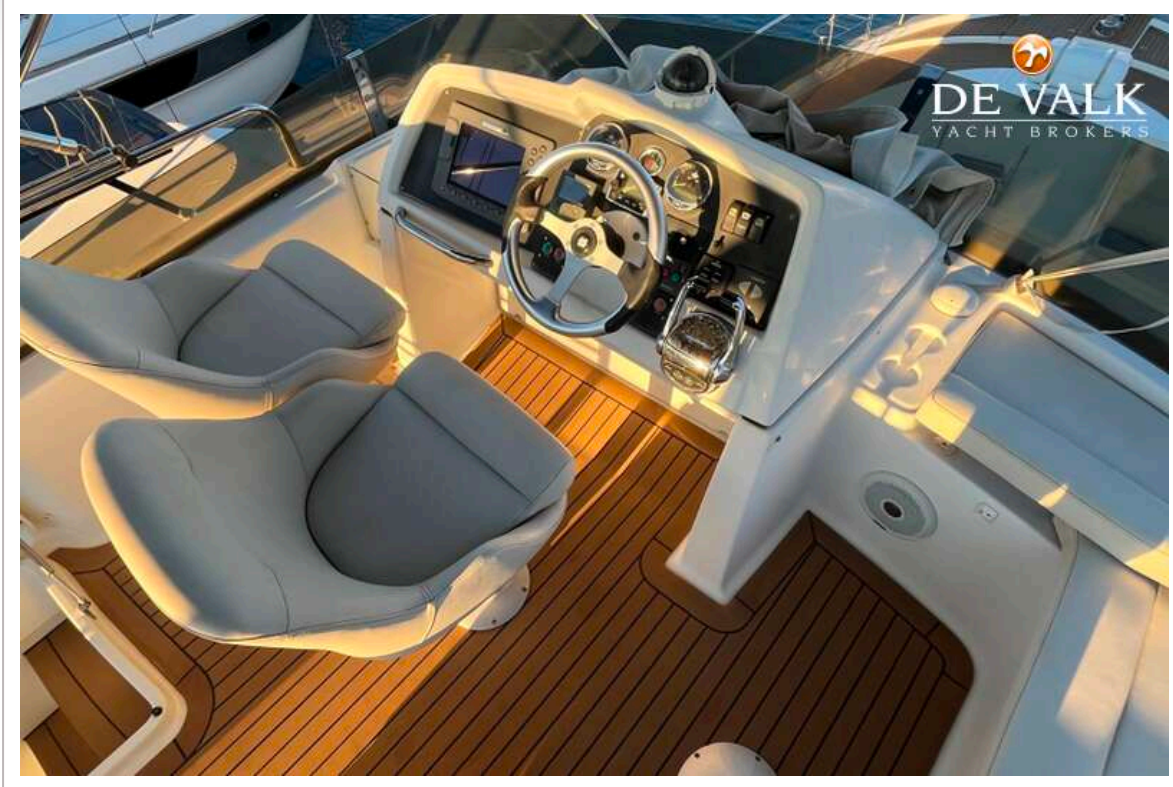
# BENETEAU ANTARES 13.80



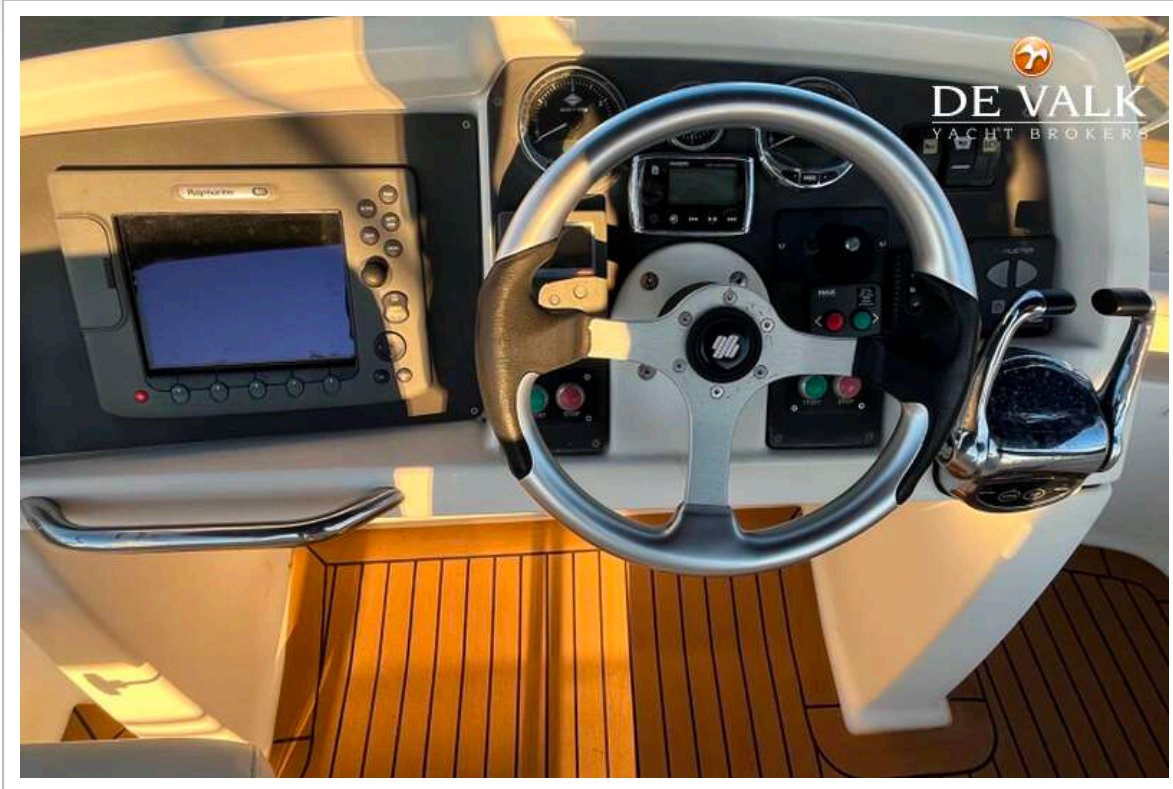
# BENETEAU ANTARES 13.80



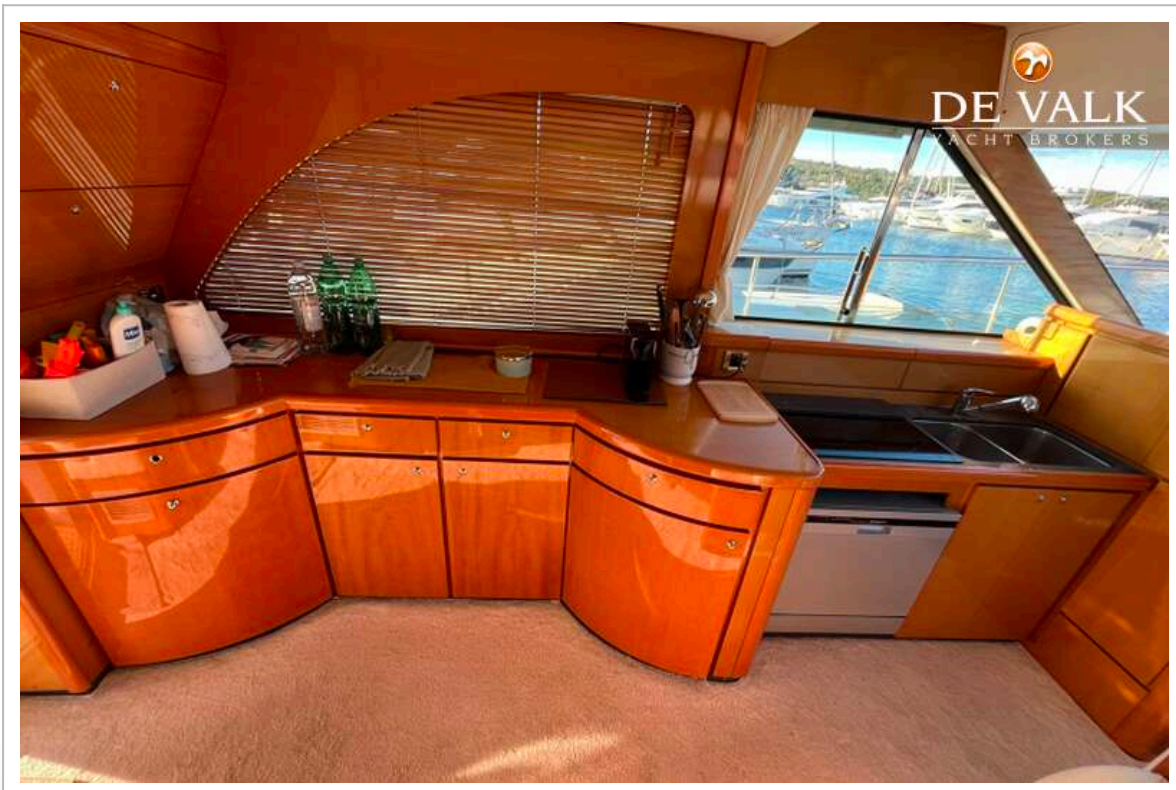
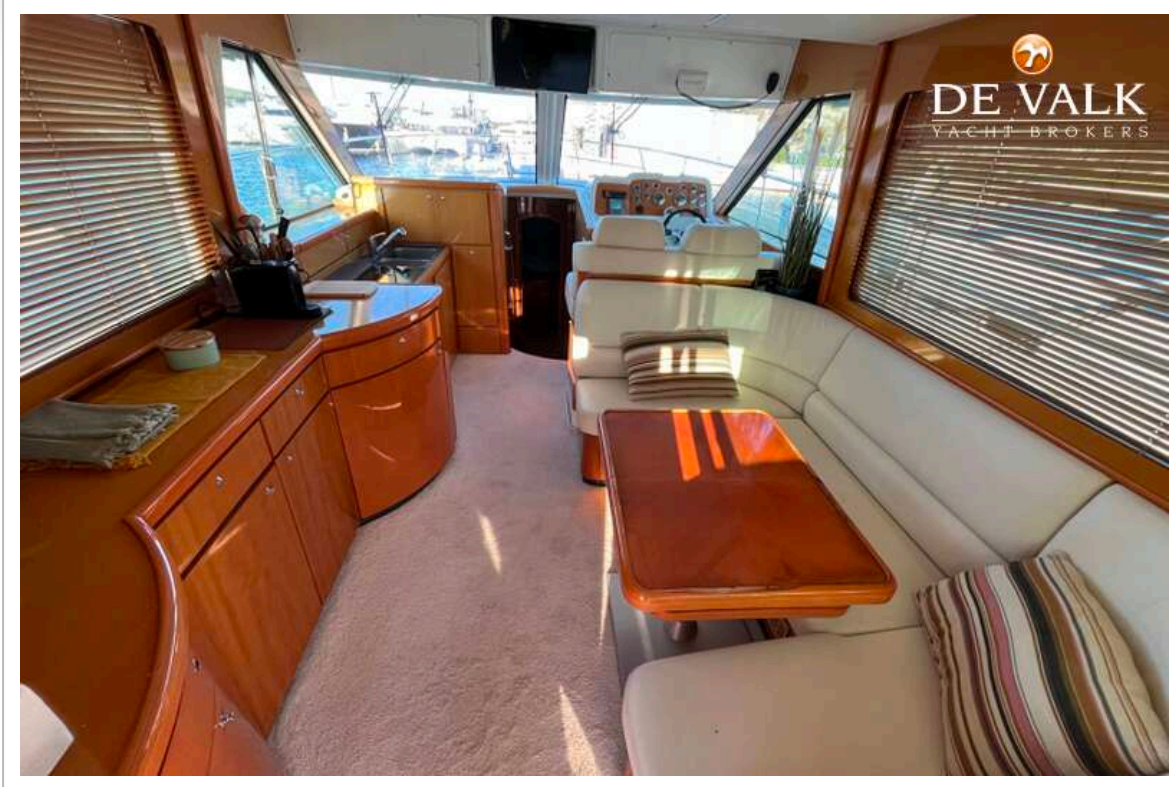
# BENETEAU ANTARES 13.80



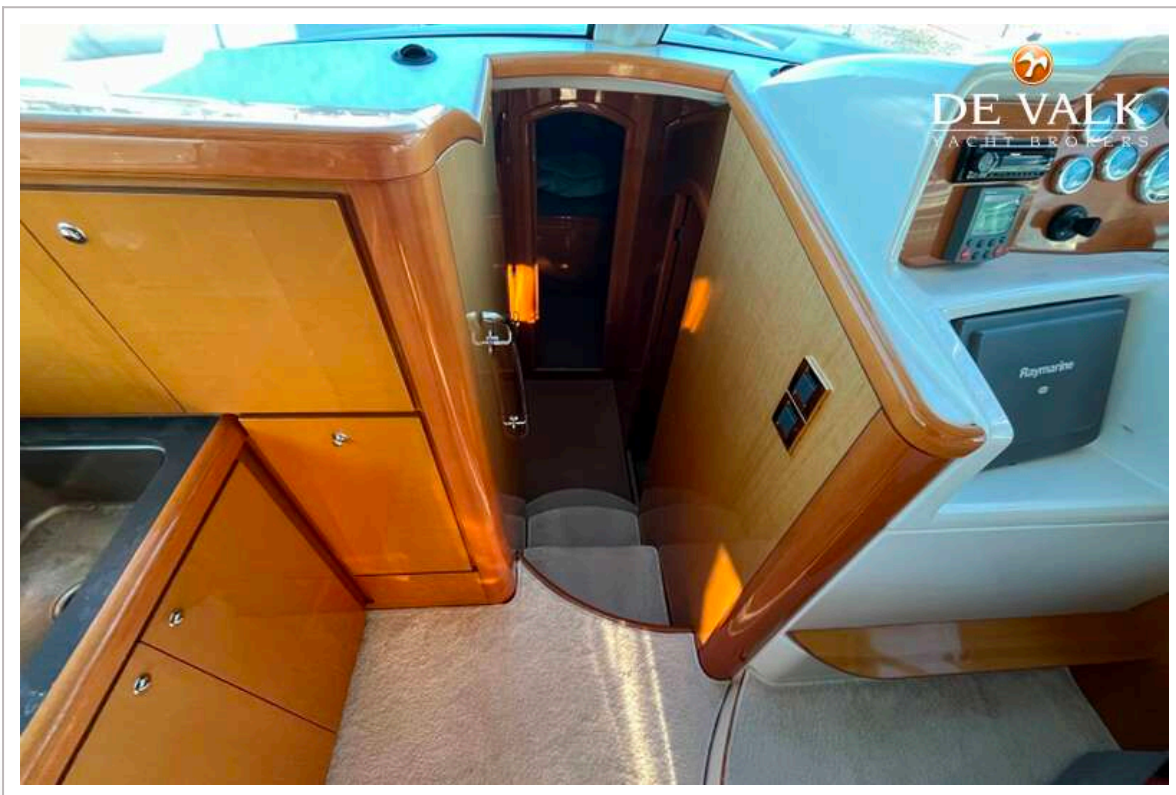
# BENETEAU ANTARES 13.80



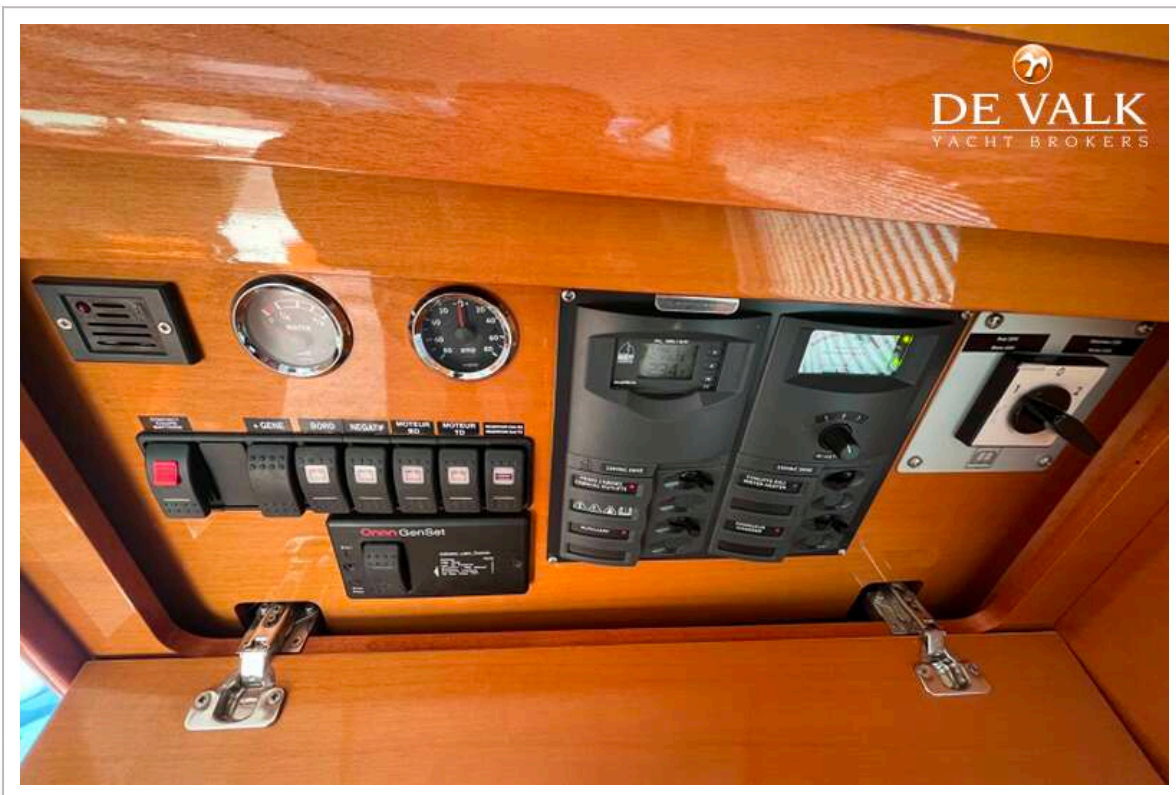
# BENETEAU ANTARES 13.80



# BENETEAU ANTARES 13.80



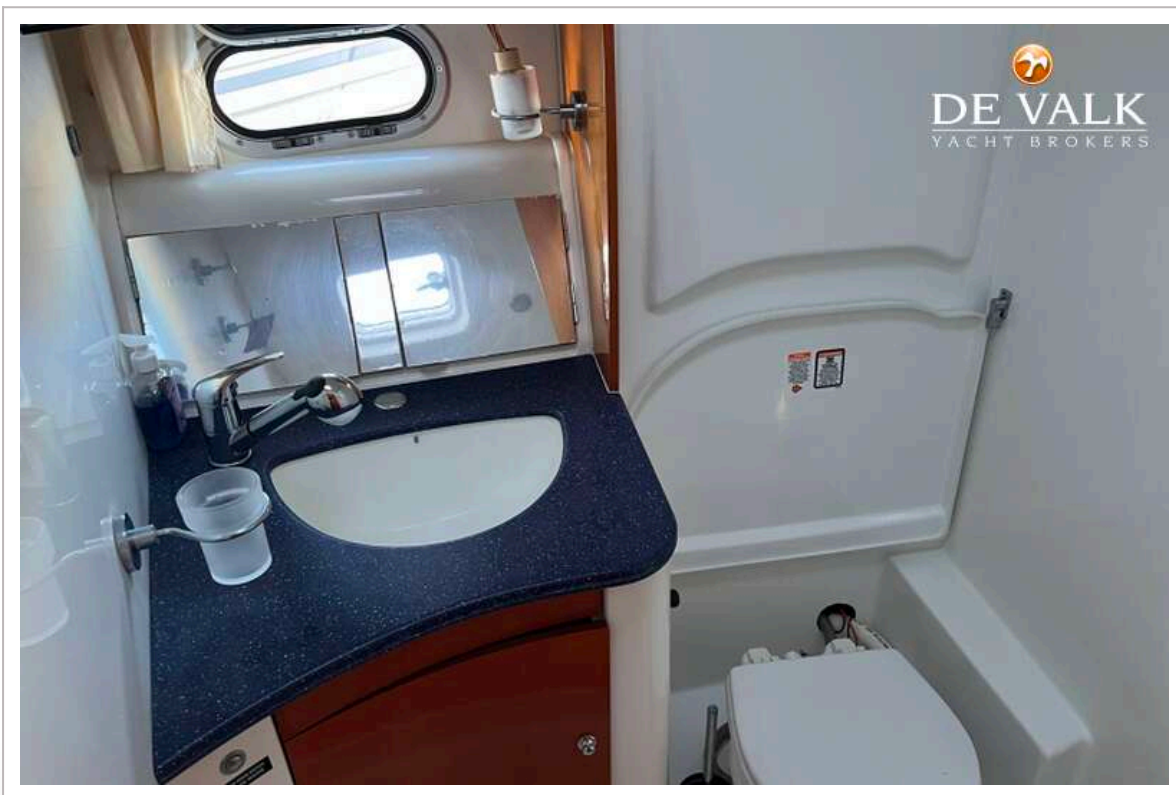
# BENETEAU ANTARES 13.80



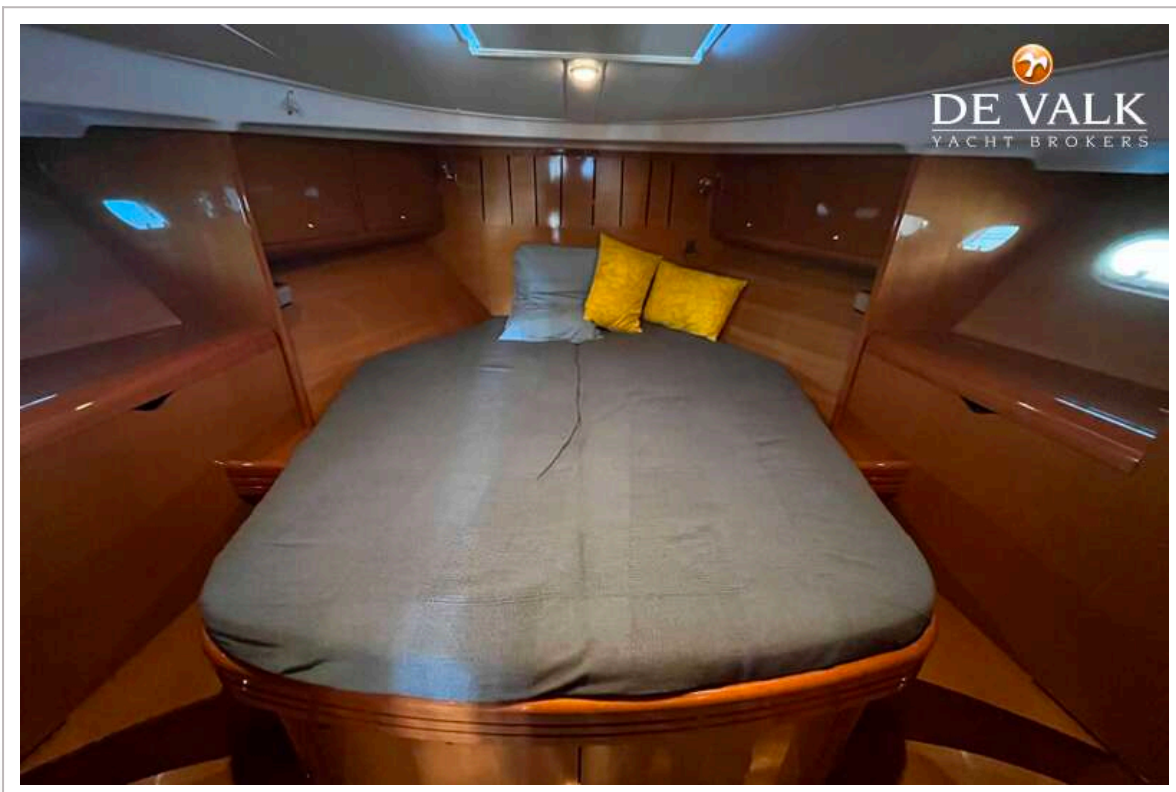
# BENETEAU ANTARES 13.80



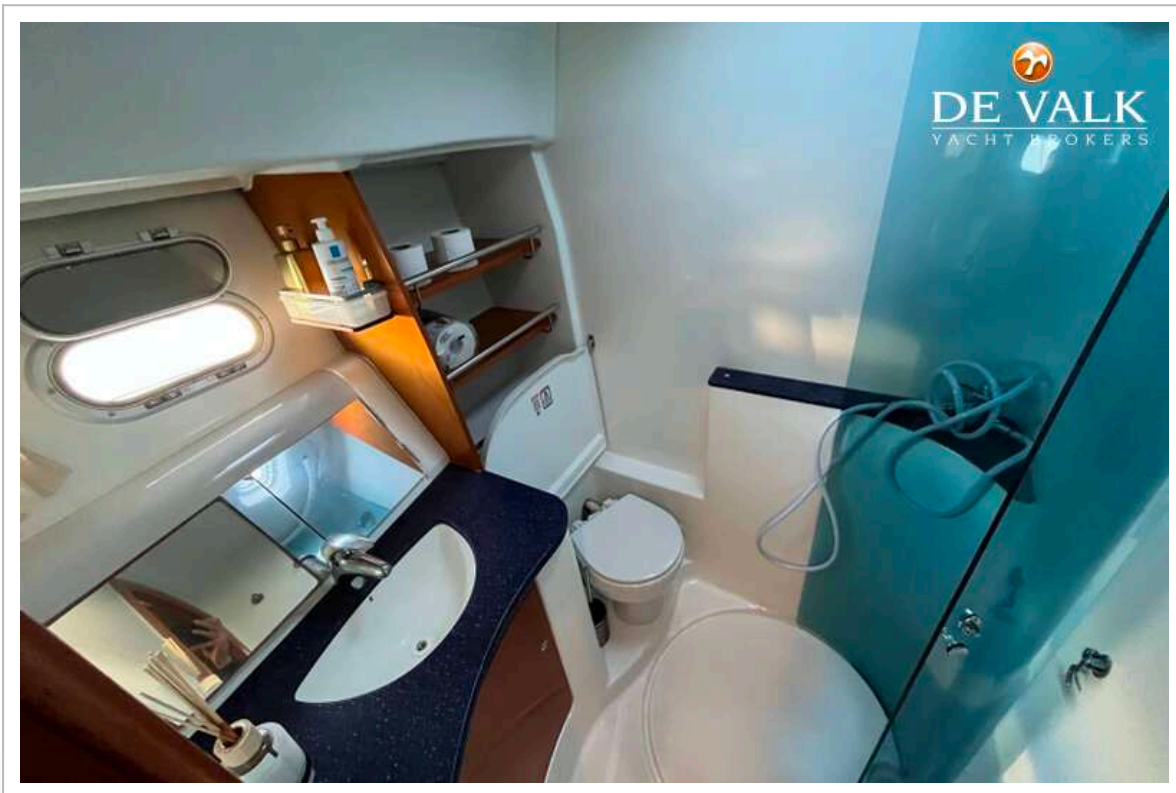
# BENETEAU ANTARES 13.80



# BENETEAU ANTARES 13.80



# BENETEAU ANTARES 13.80



# BENETEAU ANTARES 13.80

