



DE VALK
YACHT BROKERS



ASTONDOA 72 GLX



DE VALK
YACHT BROKERS

ASTONDOA 72 GLX

BROKER'S COMMENTS

Elegant and timeless, the Astondoa 72 GLX (2005) offers exceptional Mediterranean cruising with generous outdoor living spaces. Equipped with powerful engines and refined craftsmanship, she delivers comfort, performance, and reliability. Her spacious 4-cabin layout ensures luxurious accommodation for family and guests. A superb opportunity to acquire a well-maintained yacht from a prestigious Spanish shipyard. This yacht is equipped with a gyroscopic Seakeeper, essential equipment on such a yacht.

Francis James Holbourne

SPECIFICATIONS

Dimensions	21.85 x 5.45 x 0.00 (m)	Builder	Astondoa
Built	2005	Cabins	4
Material	GRP	Berths	
Engine(s)	2 x MAN D2842 LE 404 diesel	Hp/Kw	2 x 1,360.00 (hp), 1,000.96 (kw)
Asking price	€ 690.000 (VAT Paid)	Lying	

CONTACT

Sales office	De Valk Costa del Sol	Telephone	+34 951120059
Address	Southern Spain Region 29660 Malaga ES	E-mail	costadelsol@devalk.nl

DISCLAIMER

These particulars are given in good faith as supplied but cannot be guaranteed.



ASTONDOA 72 GLX

GENERAL

Model	ASTONDOA 72 GLX
Type	motor yacht
LOA (m)	21,85
Beam (m)	5,45
Year built	2005
Builder	Astondoa
Country	Spain
Designer	Astondoa
Displacement (t)	44
CE norm	A
Hull material	GRP
Hull colour	white
Hull shape	V-shaped hull
Superstructure material	GRP
Rubbing strake	stainless steel
Deck material	GRP
Deck finish	teak
Cockpit deck finish	teak
Window frame	stainless steel
Portholes	stainless steel
Fuel tank (litre)	stainless steel 5320
Freshwater tank (litre)	epoxy 1200
Blackwater tank (litre)	stainless steel
Wheel steering	hydraulic
Flybridge helm position	hydraulic

ACCOMMODATION

Cabins	4
Crew cabin	1
Crew berths	2



ASTONDOA 72 GLX

Floor	parquet
Heating	electric 220V
Air-conditioning	reverse cycle airco Throughout the yacht
Chart table	yes
Sliding door to cockpit	yes
Galley	yes
Extractor	yes
Microwave	yes
Fridge	yes
Freezer	yes
Hot water system	220V
Water pressure system	electrical
Dishwasher	yes
Hot water tap	yes
Crockery	yes
Owners cabin	double bed Midship
Wardrobe	hanging/drawers/shelves
Bathroom	en suite
Toilet	en suite
Toilet system	electric
Wash basin	in the bathroom
Shower	en suite
Guest cabin 1	double bed VIP
Wardrobe	hanging/drawers/shelves
Bathroom	en suite
Toilet	en suite
Toilet system	electric
Wash basin	in the bathroom
Shower	en suite
Guest cabin 2	twin single Port side
Wardrobe	hanging and drawers
Bathroom	en suite



ASTONDOA 72 GLX

Toilet	en suite
Toilet system	electric
Wash basin	in the bathroom
Shower	en suite
Guest cabin 3	twin single Starbord side
Wardrobe	hanging and drawers
Toilet	shared
Toilet system	electric
Wash basin	in the bathroom
Shower	shared
Toilet system	electric
Wash basin	in the bathroom

MACHINERY

No of engines	2
Make	MAN
Type	D2842 LE 404
HP	1360
kW	1000.96
Fuel	diesel
Year installed	2005
Maximum speed (kn)	32
Cruising speed (kn)	26
Range (nm)	360
Engine hours	2450
Engine cooling system	freshwater heat exchanger
Drive	shaft
Engine controls	electrical
Gearbox	hydraulic
Engine controls	electrical
Bowthruster	electric



ASTONDOA 72 GLX

Sternthruster	electric
Gearbox	hydraulic
Exhaust	watercooled
Propeller type	fixed
Propeller shaft material	stainless steel
Shaft lubrication	water
Generator	wet exhaust
Shorepower	with cable
Watermaker	180 l/h
Stabilizers	0-speed Gyroscopic Seakeeper

NAVIGATION

Compass	yes
Compass on flybridge	yes
Multi control display	yes
Depth sounder	yes
Fish finder	yes
VHF	yes
Autopilot	yes
Rudder angle indicator	yes
Radar	yes
GPS	yes
Plotter	yes
AIS receiver	yes
EPIRB	yes

EQUIPMENT

Cockpit cover	yes
Bimini	yes
Sun awning	yes
Window cover	yes



ASTONDOA 72 GLX

Cockpit cushions	yes
Cockpit table	yes
Cockpit chairs	yes
Bathing platform	yes
Transom door	yes
Gangway	yes
Anchor	Danforth
Anchor chain	yes
Anchor 2	Danforth
Windlass	yes
Capstan	yes
Windlass aft	electrical
Dinghy	rigid inflatable
Deck crane	yes
Life raft	valise (or bag)



ASTONDOA 72 GLX



ASTONDOA 72 GLX



ASTONDOA 72 GLX



ASTONDOA 72 GLX



ASTONDOA 72 GLX



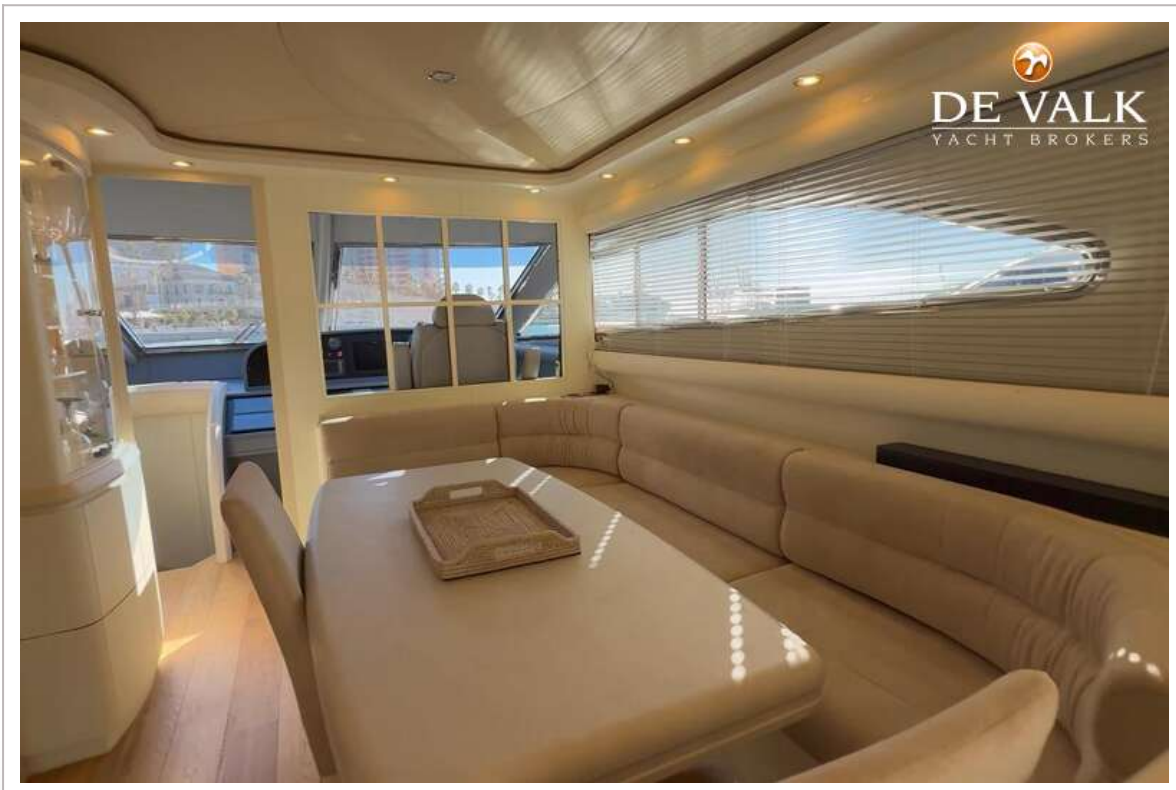
ASTONDOA 72 GLX



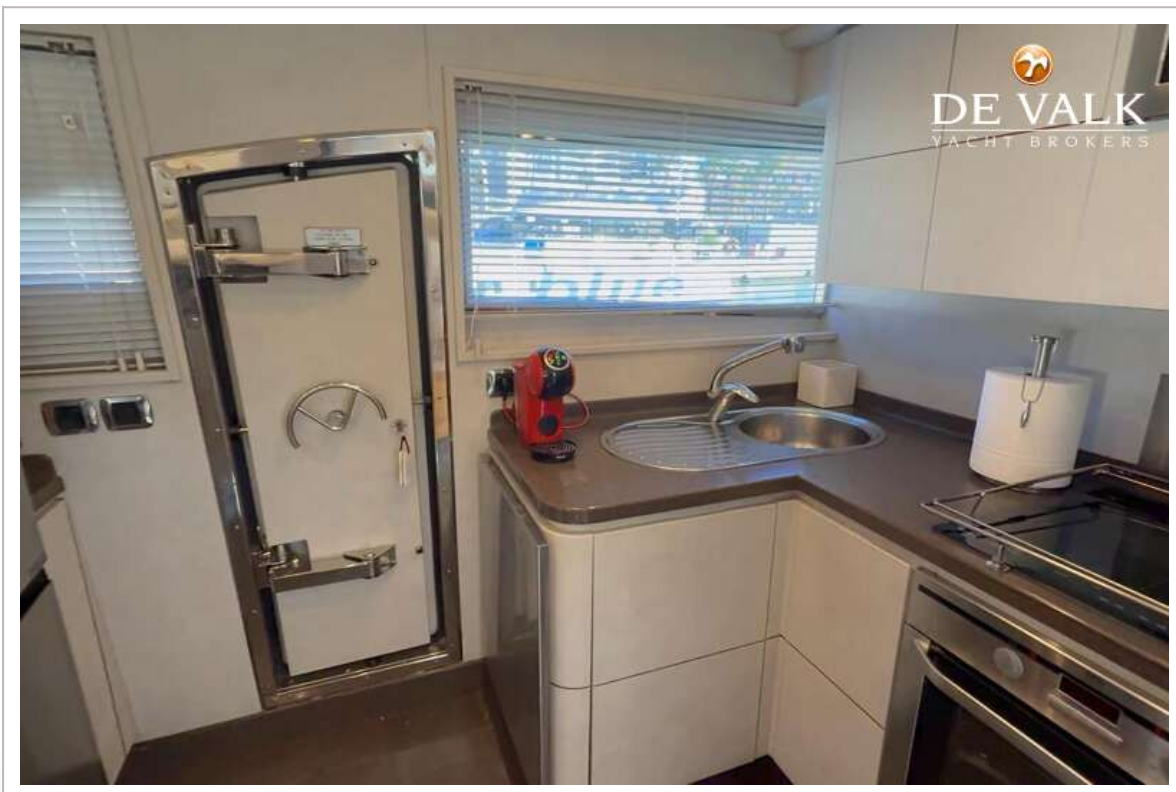
ASTONDOA 72 GLX



ASTONDOA 72 GLX



ASTONDOA 72 GLX



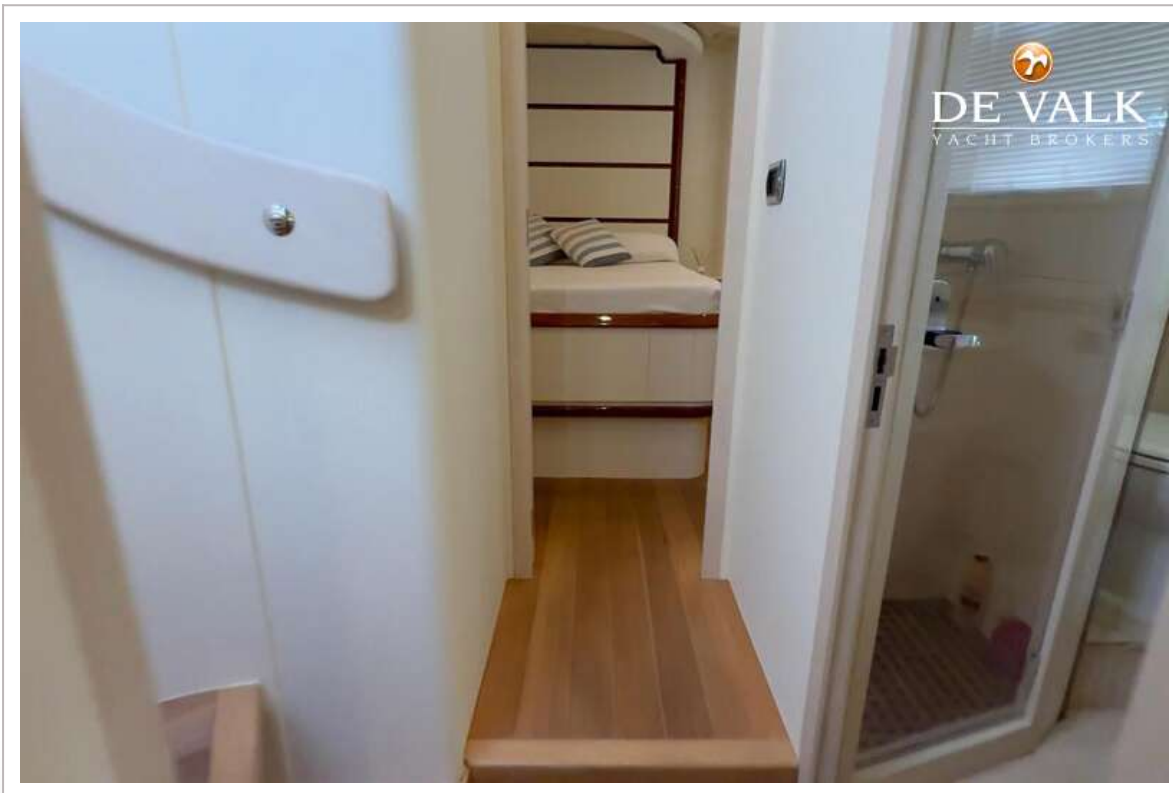
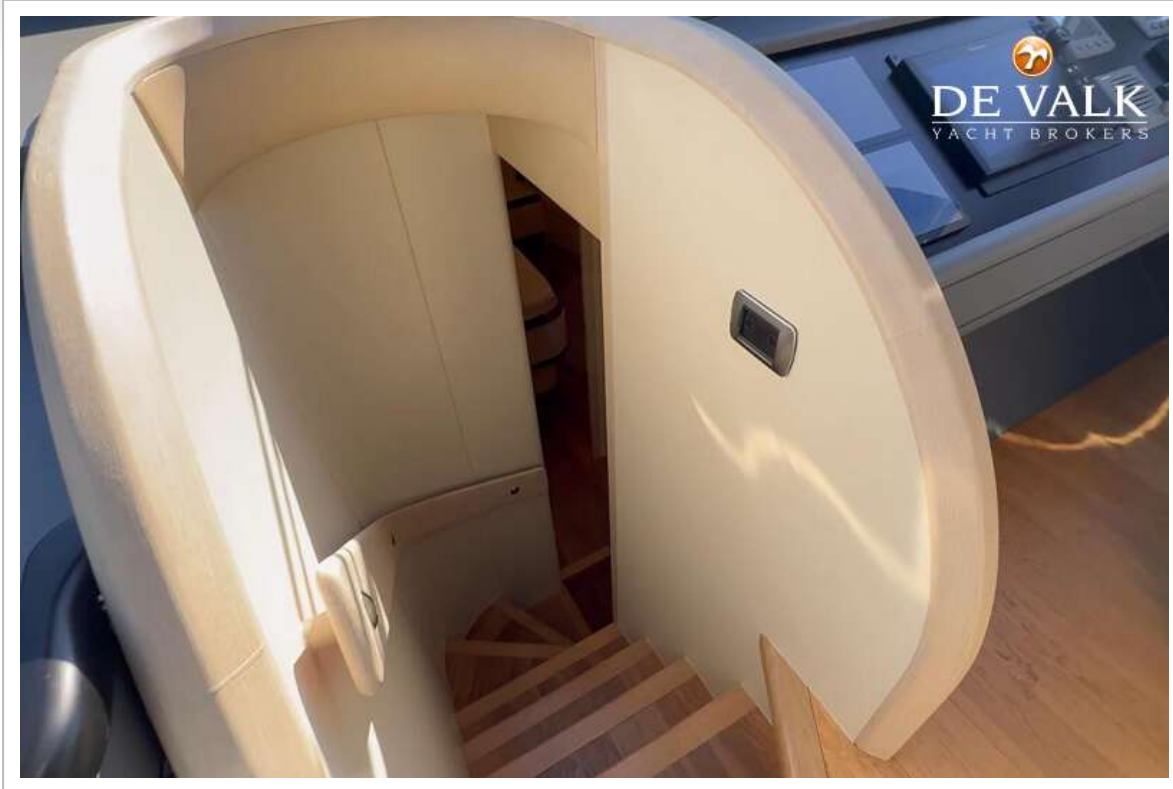
ASTONDOA 72 GLX



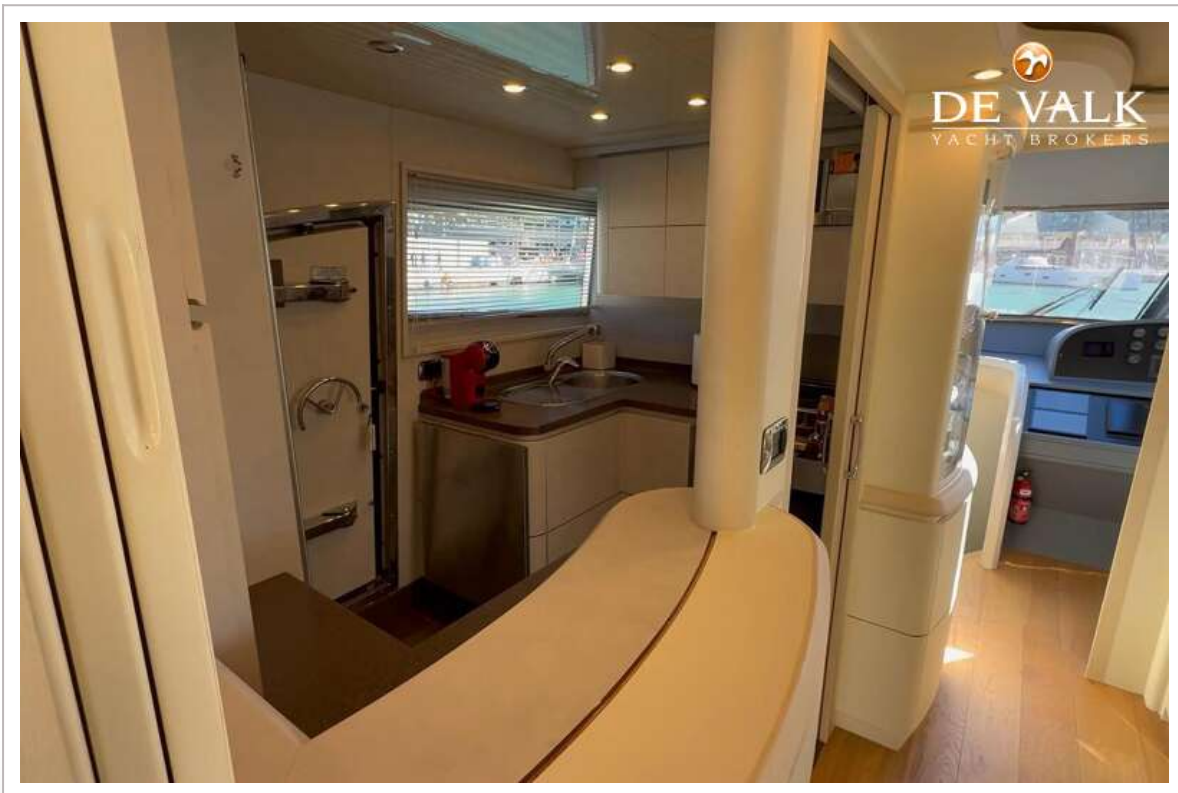
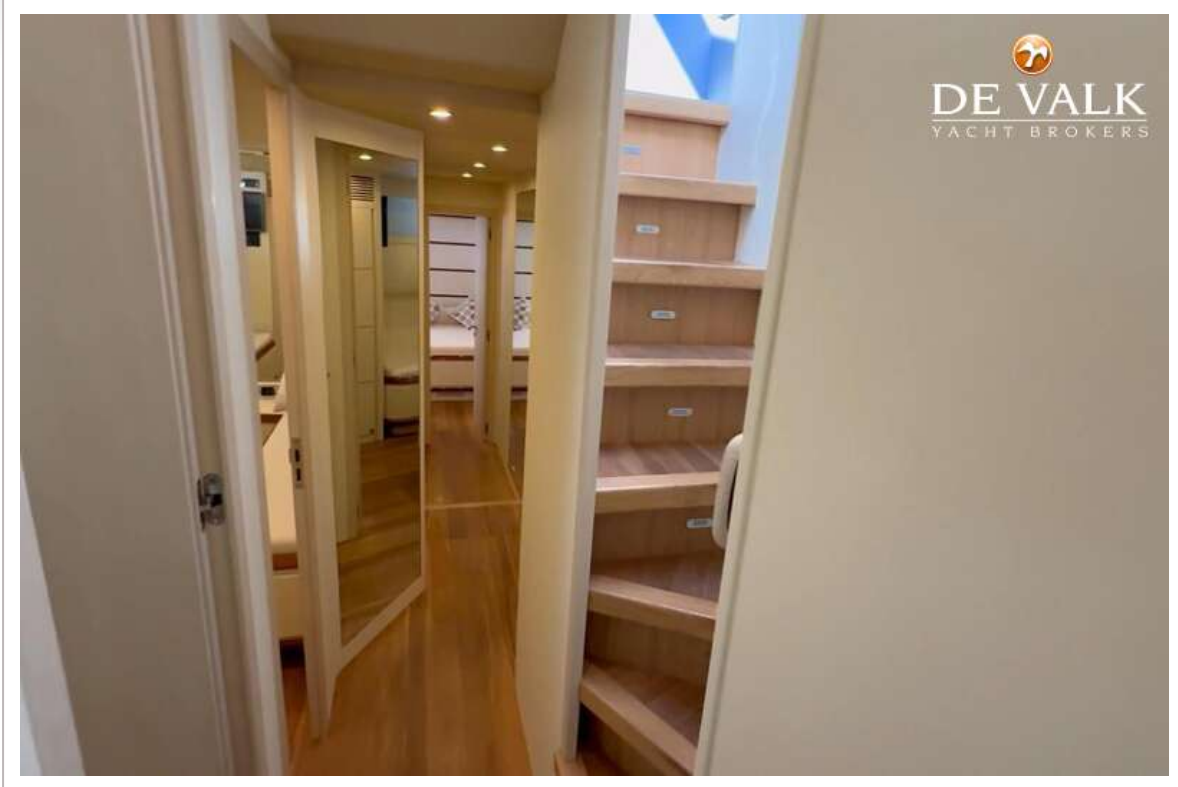
ASTONDOA 72 GLX



ASTONDOA 72 GLX



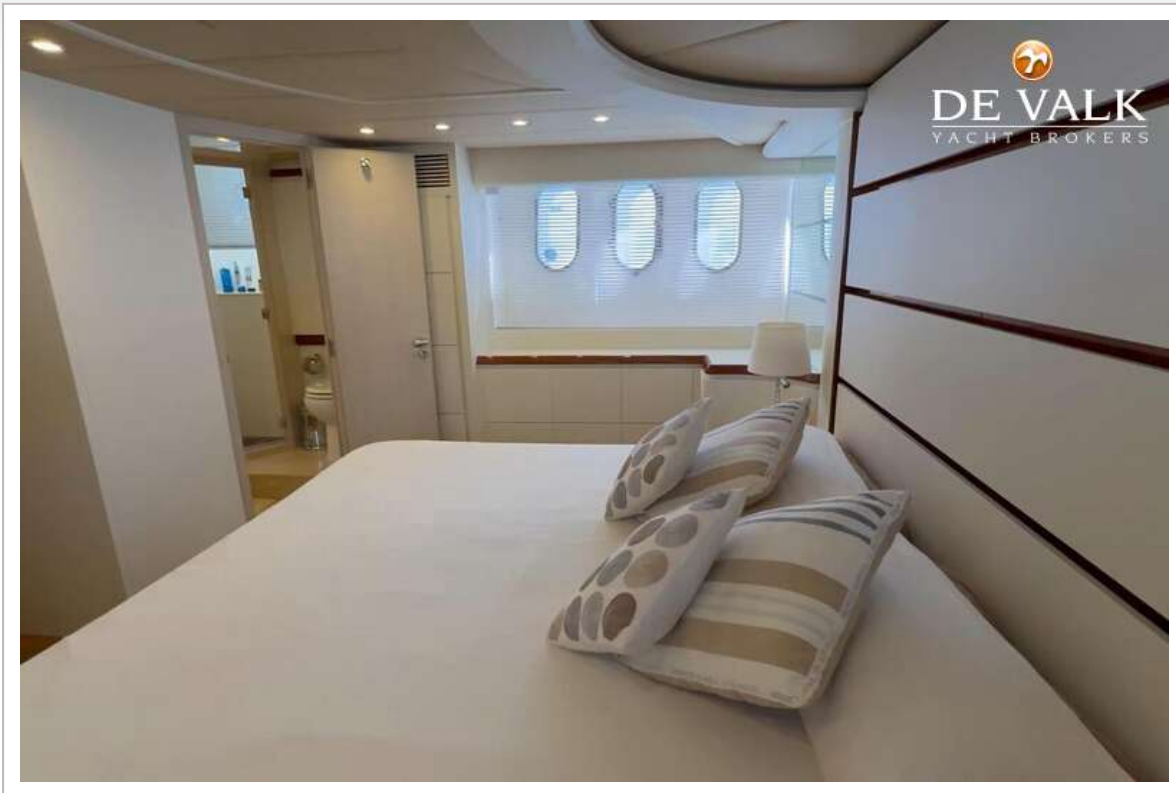
ASTONDOA 72 GLX



ASTONDOA 72 GLX



ASTONDOA 72 GLX



ASTONDOA 72 GLX



ASTONDOA 72 GLX

