



DE VALK
YACHT BROKERS



BRANDSMA VLET 10.70 AK



DE VALK
YACHT BROKERS

BRANDSMA VLET 10.70 AK

BROKER'S COMMENTS

The Brandsma Vlet 10.70 AK is a popular motor yacht from the renowned Dutch shipyard Brandsma-Yachten in Sneek. She has an open cockpit and wide gangways. She has a low, wide hull. When the Bimini and upper windows are lowered, she is just under 2.50 meters long, resulting in low vertical clearance. She has an excellent engine, bow thruster, and stern thruster, making her easy to handle. Inside, there's plenty of space, a cozy interior, comfortable seating and mooring, a spacious galley, a neat toilet, and a separate, spacious shower. The boat can be viewed in Drimmelen by appointment.

Ger Bayens

SPECIFICATIONS

Dimensions	10.70 x 3.85 x 0.95 (m)	Builder	Brandsma Sneek
Built	2000	Cabins	2
Material	Steel	Berths	6
Engine(s)	1 x Yanmar 4JH2M-DTE diesel	Hp/Kw	85.00 (hp), 62.56 (kw)
Asking price	€ 119.000 (VAT Paid)	Lying	The Netherlands

CONTACT

Sales office	De Valk Thuishaven	Telephone	+31 35 5829042
Address	Marinaweg 8 1361 AC Almere NL	E-mail	thuishaven@devalk.nl

DISCLAIMER

These particulars are given in good faith as supplied but cannot be guaranteed.



BRANDSMA VLET 10.70 AK

GENERAL

Model	BRANDSMA VLET 10.70 AK
Type	motor yacht
LOA (m)	10,70
Beam (m)	3,85
Draft (m)	0,95
Air draft (m)	4,25
Air draft min (m)	2,50
Headroom (m)	1,91
Year built	2000
Launched	They started construction from 1999 2000
Builder	Brandsma Sneek
Country	The Netherlands
Designer	Brandsma Sneek
Displacement (t)	9
Ballast (tonnes)	lead in steel Little in the front
CE norm	C
Hull material	steel
Hull colour	blue
Hull thickness (mm)	5
Hull shape	multi hard chine
Keel type	long keel
Rubbing strake	fender rope
Deck material	steel
Deck finish	non-skid paint
Superstructure deck finish	non-skid paint
Cockpit deck finish	non-skid paint
Antifouling (year)	2025
Window frame	aluminium
Window material	glass
Deckhatch	yes



BRANDSMA VLET 10.70 AK

Portholes	stainless steel
Insulation	yes
Mast can be lowered	manual Than is the airdraft 3,40
Fuel tank (litre)	stainless steel 300
Fuel tank 2 (litre)	stainless steel 300
Level indicator (fuel tank)	Wema
Freshwater tank (litre)	stainless steel 2x250 ltr
Level indicator (freshwater)	Wema
Blackwater tank (litre)	polyethylene 137 ltr (2025)
Level indicator (blackwater)	yes
Blackwater tank extraction	deck extraction + pump
Wheel steering	hydraulic
Inside helm position	yes
Outside helm position	yes
Extra info	when the bimini, tent and outside windows are lowered, than is the air draft 2,25 mtr

ACCOMMODATION

Cabins	2
Berths	6
Interior	mahogany
Floor	teak and holly
Aft deck	yes
Pilot house/deck saloon	yes
Headroom saloon (m)	1.91
Heating	diesel ducted hot air Autotherm
Aft Cabin	yes
Dining room	yes
Dinette	yes
Dinette to convert into berth	yes
Convertible berth	yes



BRANDSMA VLET 10.70 AK

Opening door to aft deck	yes
Galley	yes
Countertop	plastic
Sink	stainless steel
Cooker	calor gas 4 pits
Fridge	85 liters with freezer compartment at the top of the refrigerator Indel Webasto
Hot water system	220V + Calor Gas
Water pressure system	electrical
Owners cabin	double bed
Bed length (m)	2,00 x 1,60
Wardrobe	hanging/drawers/shelves
Bathroom	separate
Toilet	separate
Toilet system	manual
Wash basin	in the bathroom Also in the toilet
Shower	separate In the bathroom
Guest cabin 1	double bed
Bed length (m)	2,20 x 1,40
Wardrobe	hanging and drawers
Bathroom	shared
Toilet	shared
Toilet system	manual
Shower	shared
Extra info	the fifth and sixth person can sleep in the dining room on the dinette 2,00 x 1,40

MACHINERY

No of engines	1
Make	Yanmar
Type	4JH2M-DTE
HP	85



BRANDSMA VLET 10.70 AK

kW	62.56
Fuel	diesel
Year installed	2000
Maximum speed (kn)	7,5
Cruising speed (kn)	5,3
Consumption (l/hr)	3
Engine hours	2283
Engine cooling system	freshwater heat exchanger
Drive	shaft
Engine controls	bowden cable
Gearbox	yes
Bowthruster	electric Vetus
Sternthruster	electric Vetus
Exhaust	watercooled
Propeller type	fixed
Propeller blades	3
Propeller shaft material	stainless steel
Shaft lubrication	water
Manual bilge pump	yes
Electrical installation	yes
Batteries	5
Start battery	1
Service battery	3x Dynac Semi tractie105 Ah (2025)
Sternthruster battery	(2025)
Battery monitor	Combi system control panel Mastervolt
Battery charger/inverter	Mastervolt Dakar Combi 12/1500-50
Solar panel	with control panel from Steca PR 3030 240W
Diode battery combiners	yes
Shorepower	with cable
Extra info	In June 2025 the engine was serviced as standard, including oil, oil filter and rubber water pump
Extra info	Propeller shaft seal was replaced in October 2025



Extra info

Batterij Isolator MBI 100 / 3 IG

NAVIGATION

Depth sounder/log

Raymarine

VHF

can be placed indoors and outdoors Shipmate RS 8300

Rudder angle indicator

Wema

Plotter/GPS

can be placed indoors and outdoors Raymarine RC 435i

Navigation lights

yes

EQUIPMENT

Fixed windscreen

3 fixed windscreens, but they can be turned down so the boat is only 2.50 meters high

Sprayhood

yes

Bimini

yes

Cockpit table

yes

Cockpit chairs

yes

Boarding ladder

stainless steel

Anchor

Danforth

Anchor chain

30 mtr

Anchor 2

yes

Windlass

manual

Capstan

yes

Deck wash

yes

Davits

stainless steel 2x

Davits controls

manual

Sea railing

stainless steel

Grab rail (superstructure)

stainless steel

Railing side opening gates

yes

Pushpit

yes

Pulpit

yes

Wiper

2 downstairs inside and 1 upstairs outside 3x



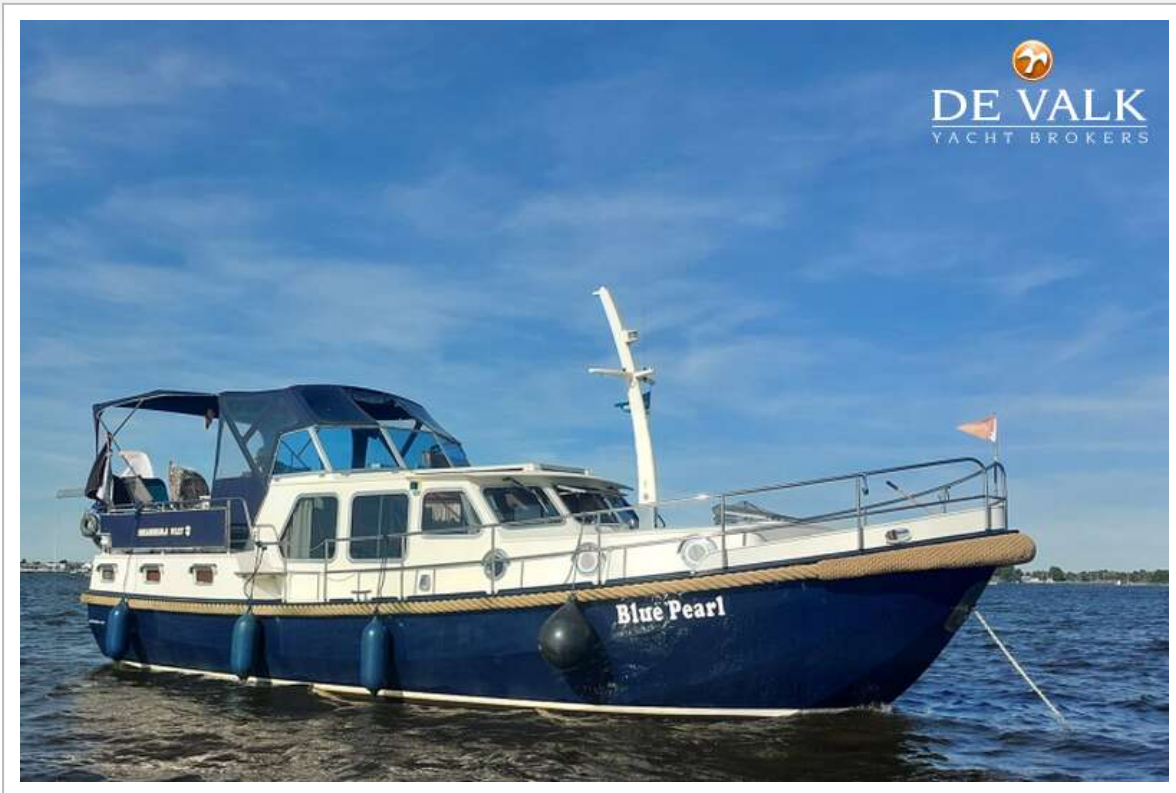
Horn	electric
Fenders	yes
Mooring lines	yes
Spare parts	yes
Fire extinguisher	yes

RIGGING

Material mast	aluminium coated
---------------	------------------



BRANDSMA VLET 10.70 AK



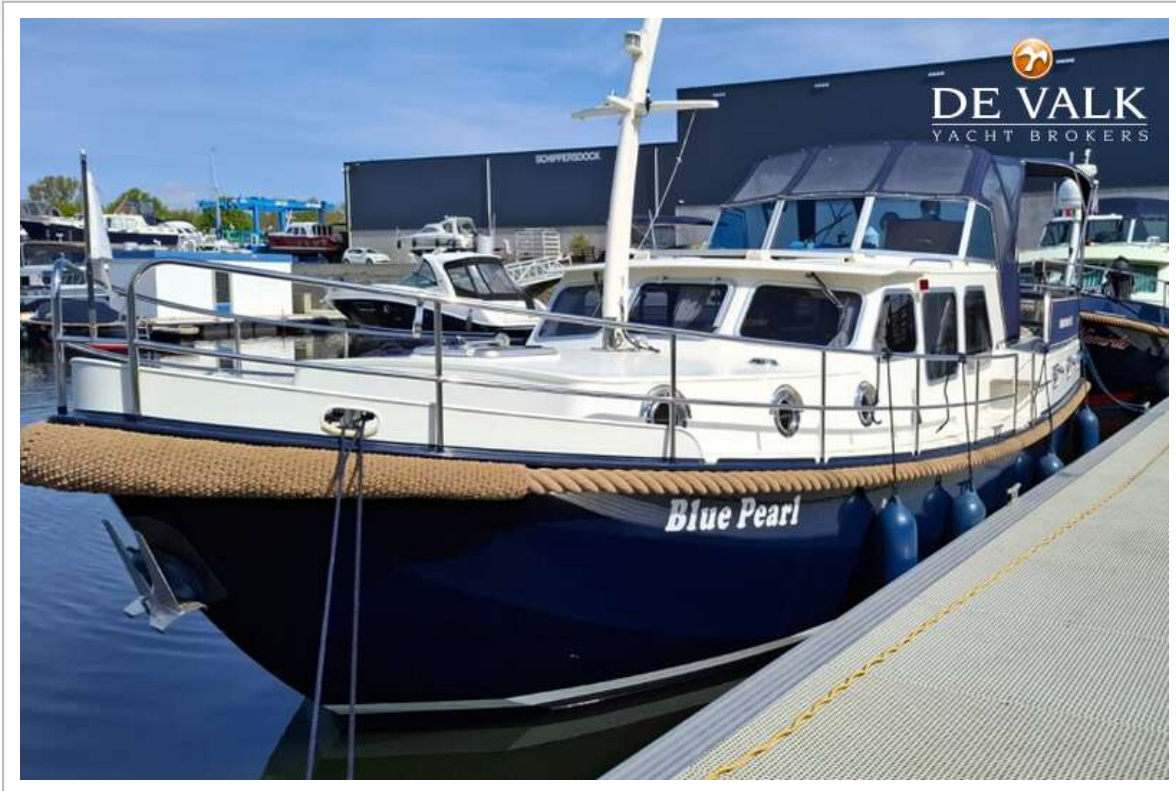
BRANDSMA VLET 10.70 AK



BRANDSMA VLET 10.70 AK

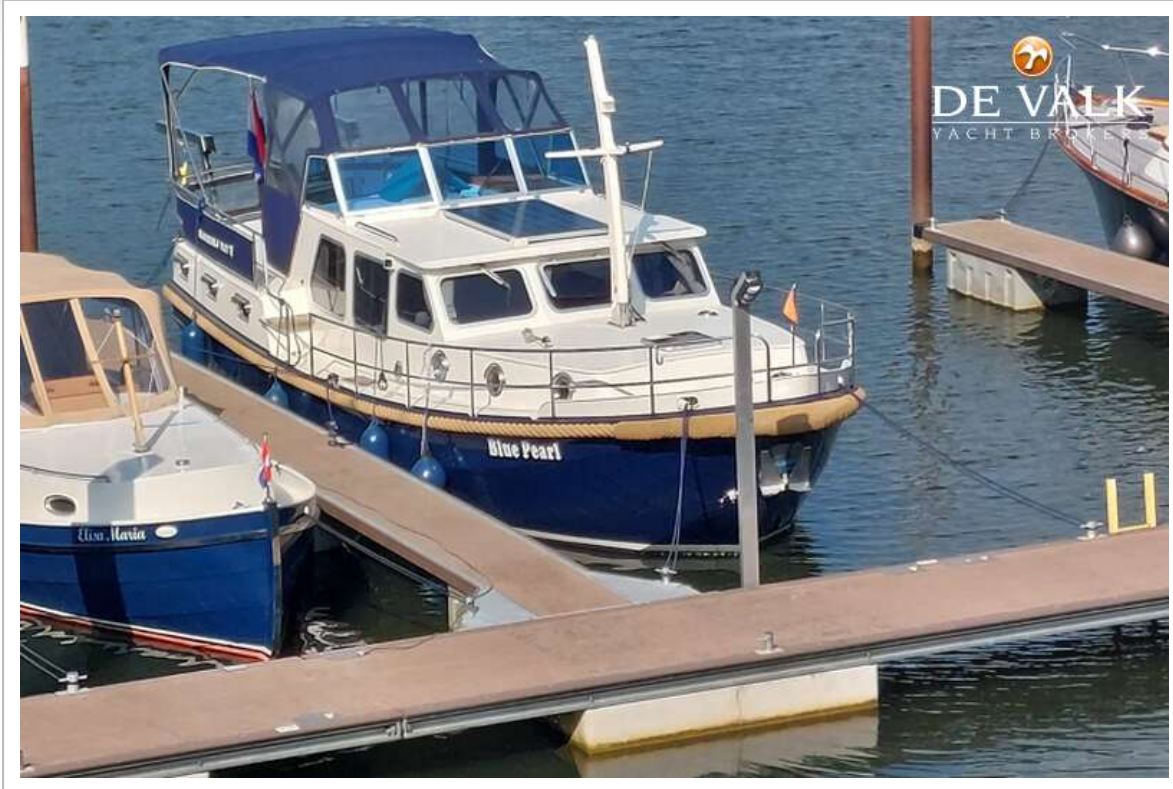


BRANDSMA VLET 10.70 AK



BRANDSMA VLET 10.70 AK

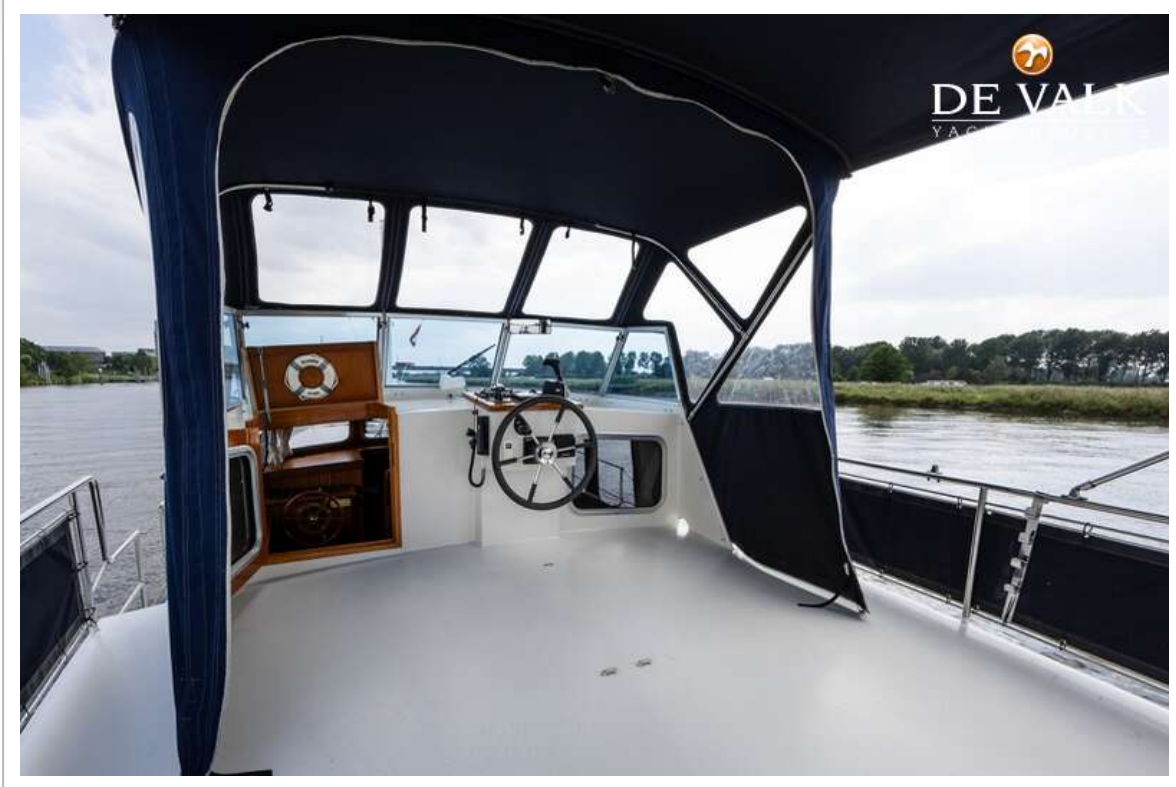




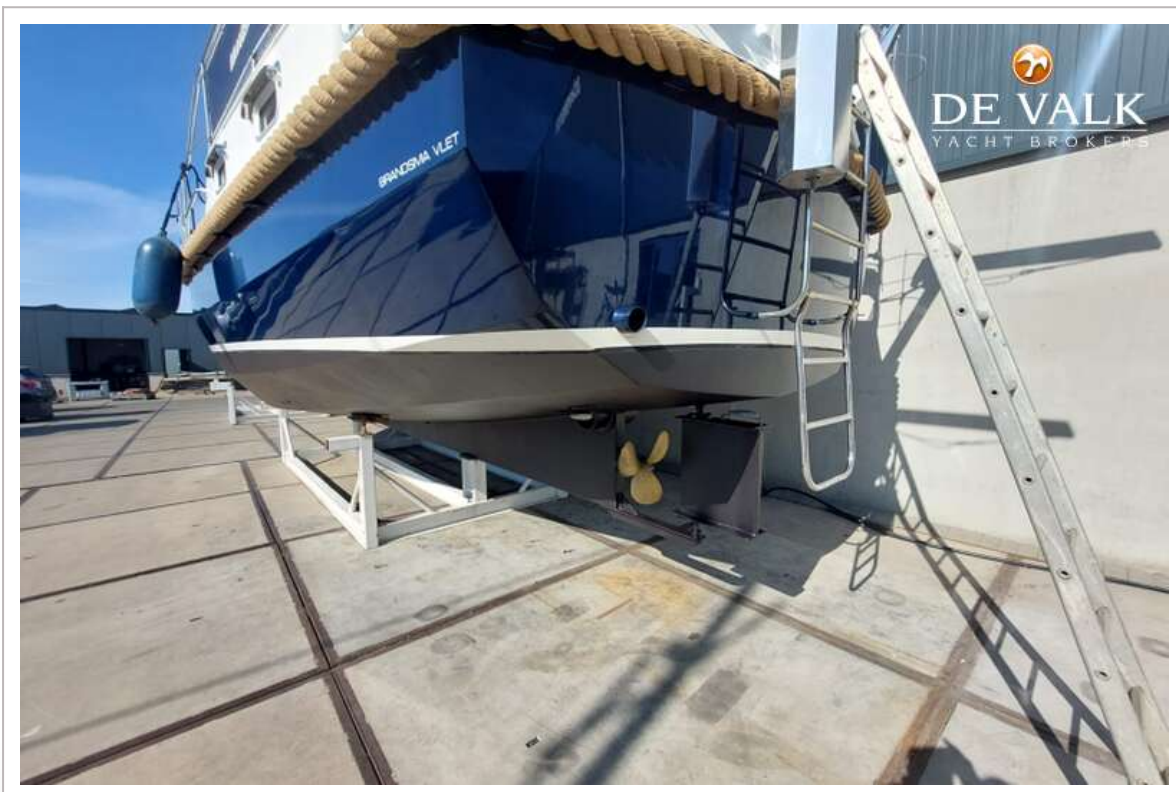
BRANDSMA VLET 10.70 AK



BRANDSMA VLET 10.70 AK



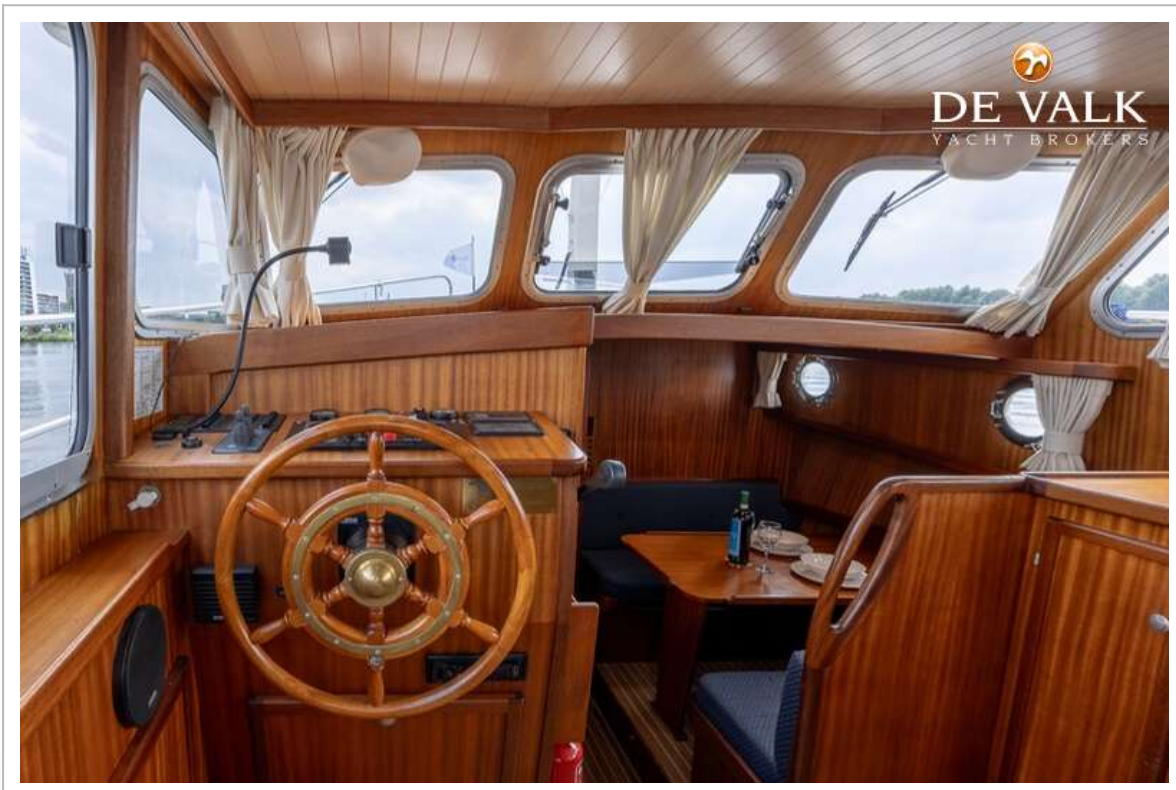
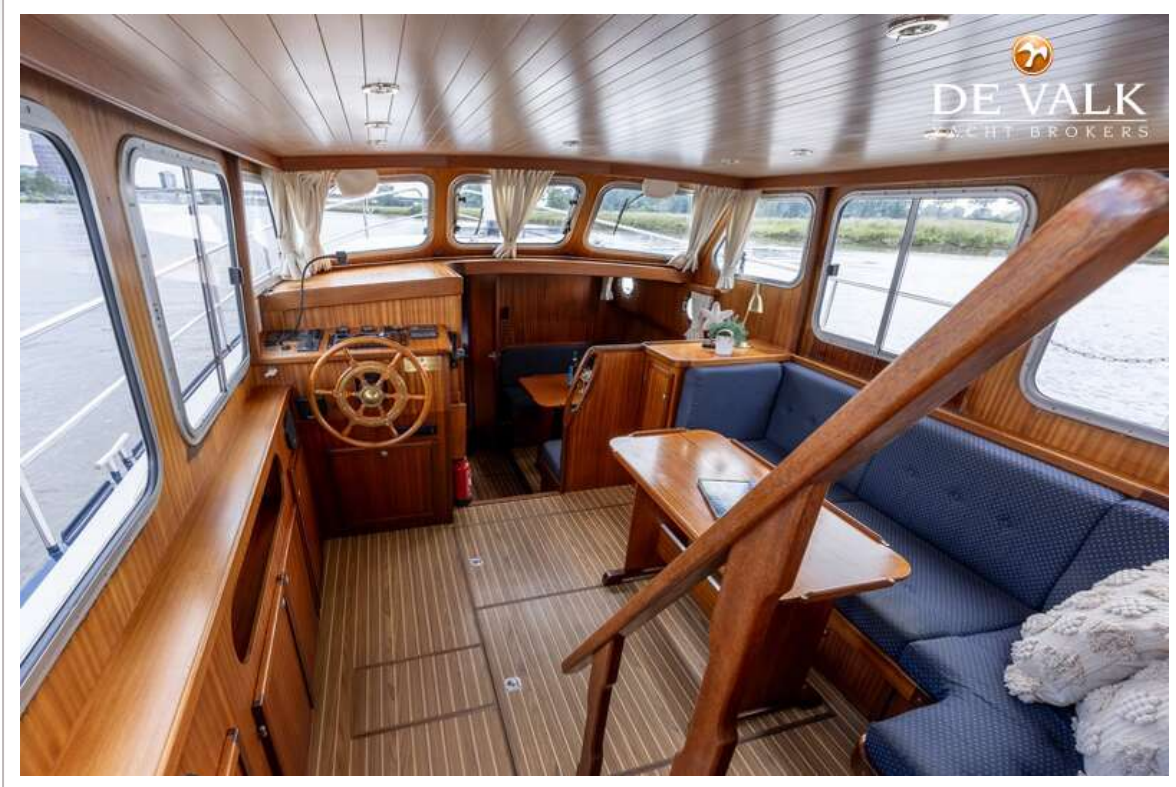
BRANDSMA VLET 10.70 AK



BRANDSMA VLET 10.70 AK



BRANDSMA VLET 10.70 AK



BRANDSMA VLET 10.70 AK



BRANDSMA VLET 10.70 AK



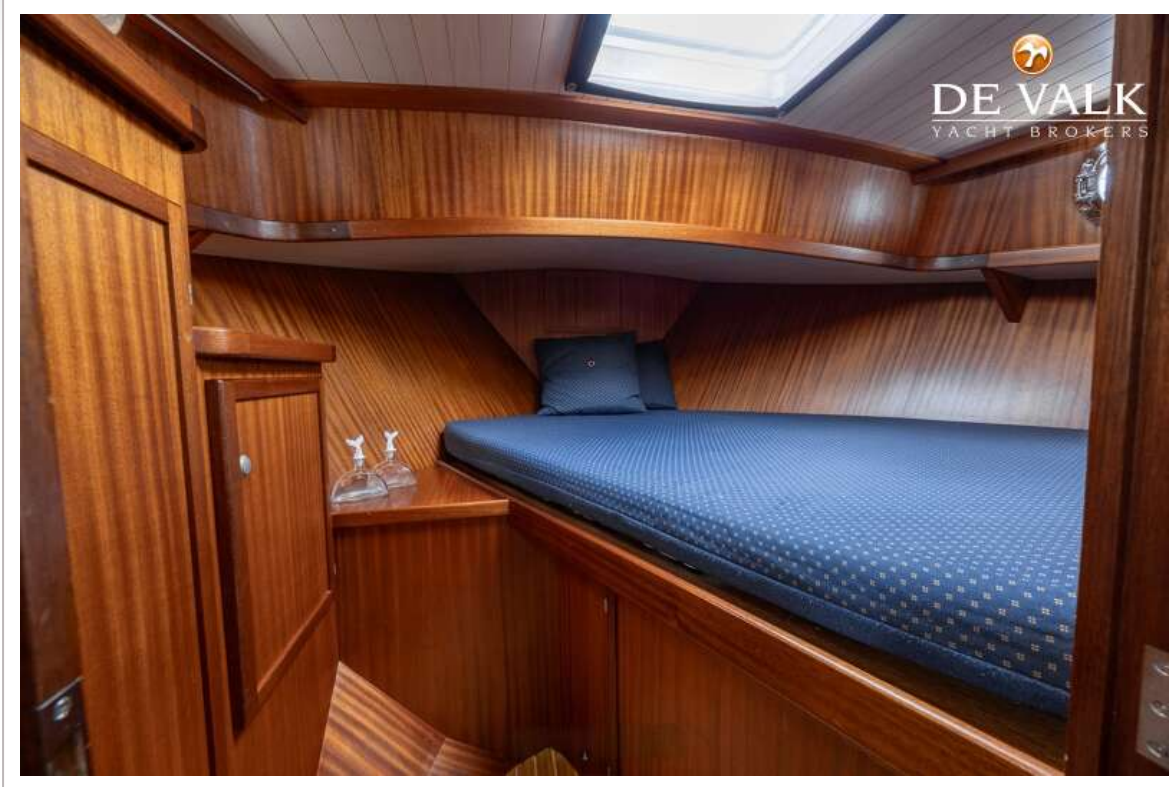
BRANDSMA VLET 10.70 AK



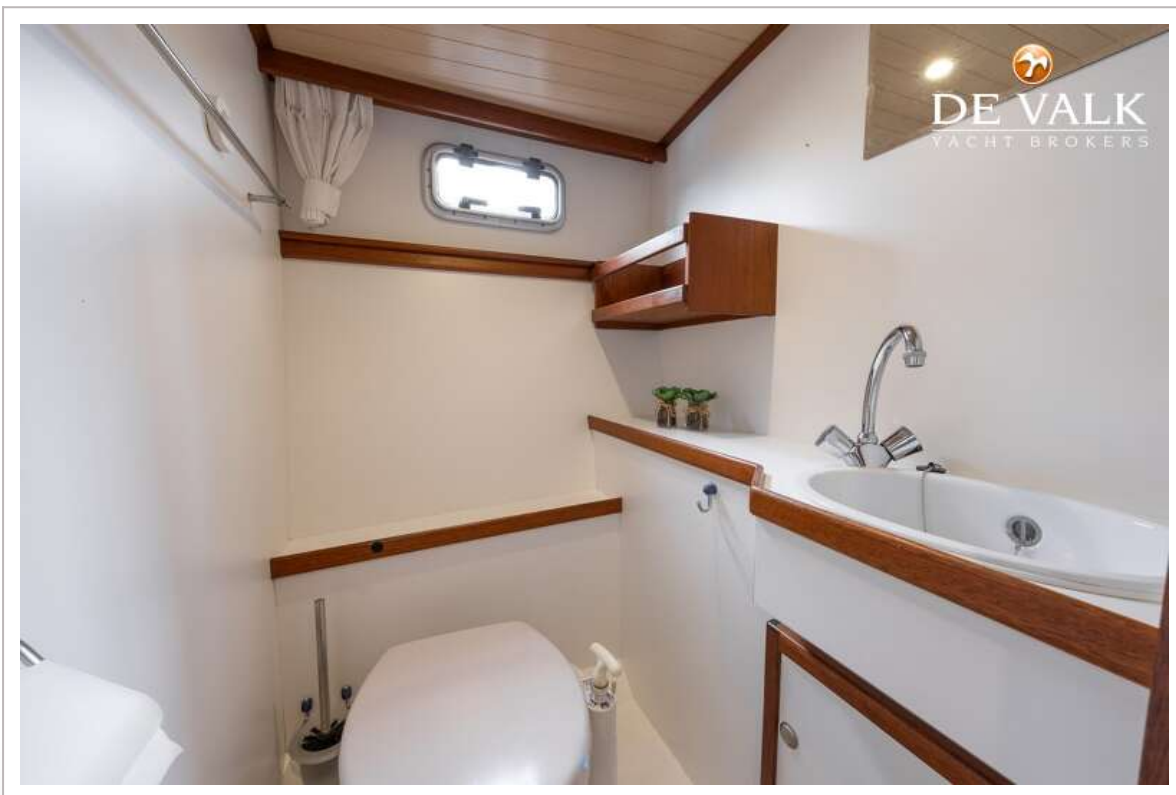
BRANDSMA VLET 10.70 AK



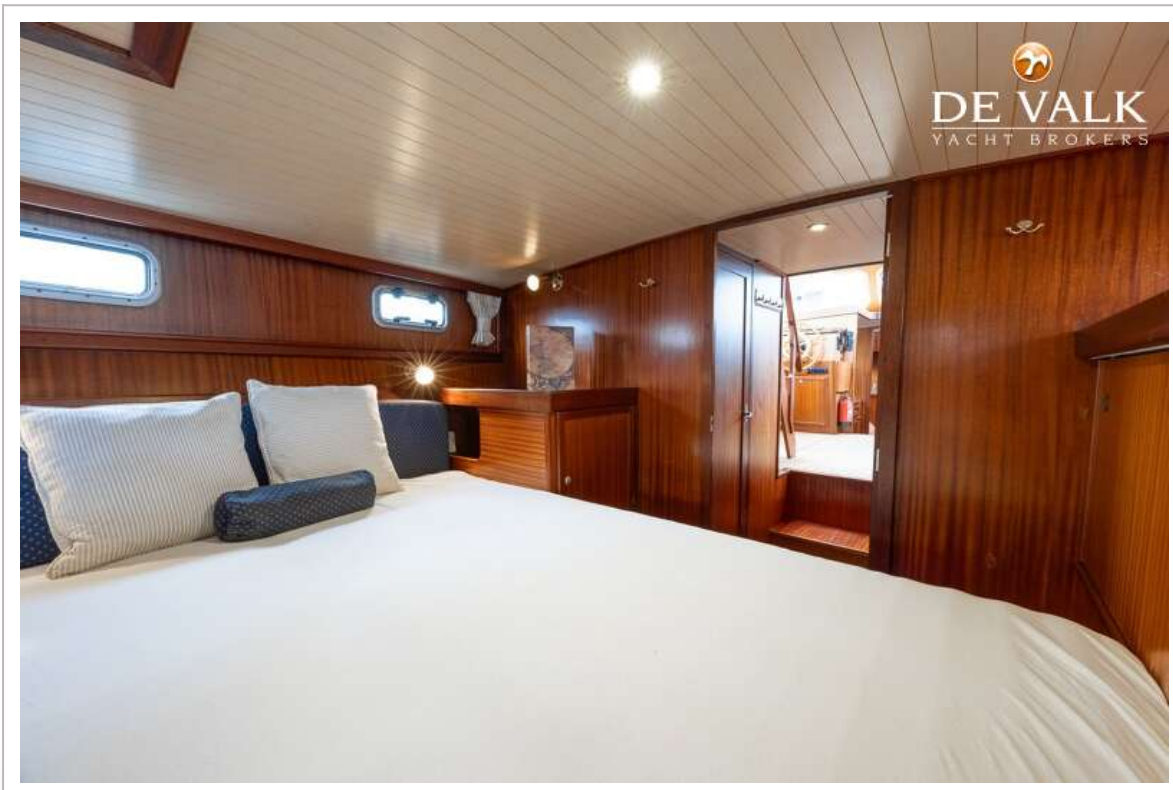
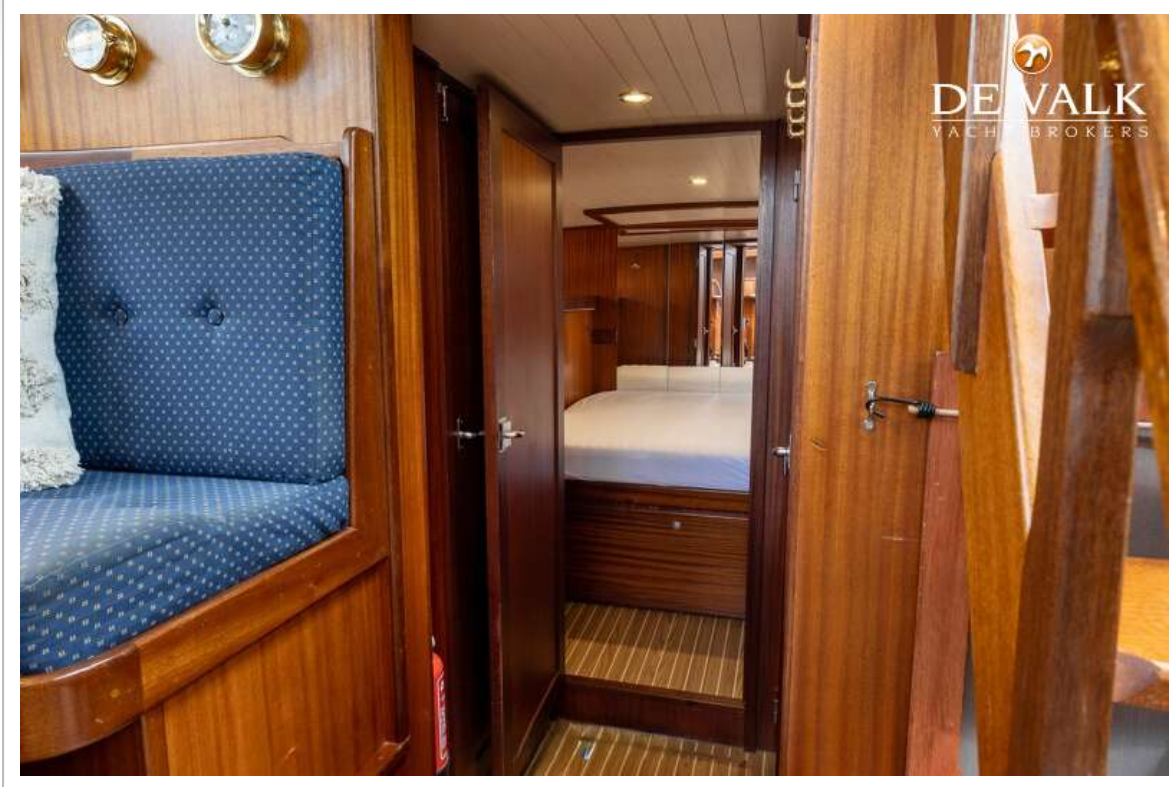
BRANDSMA VLET 10.70 AK

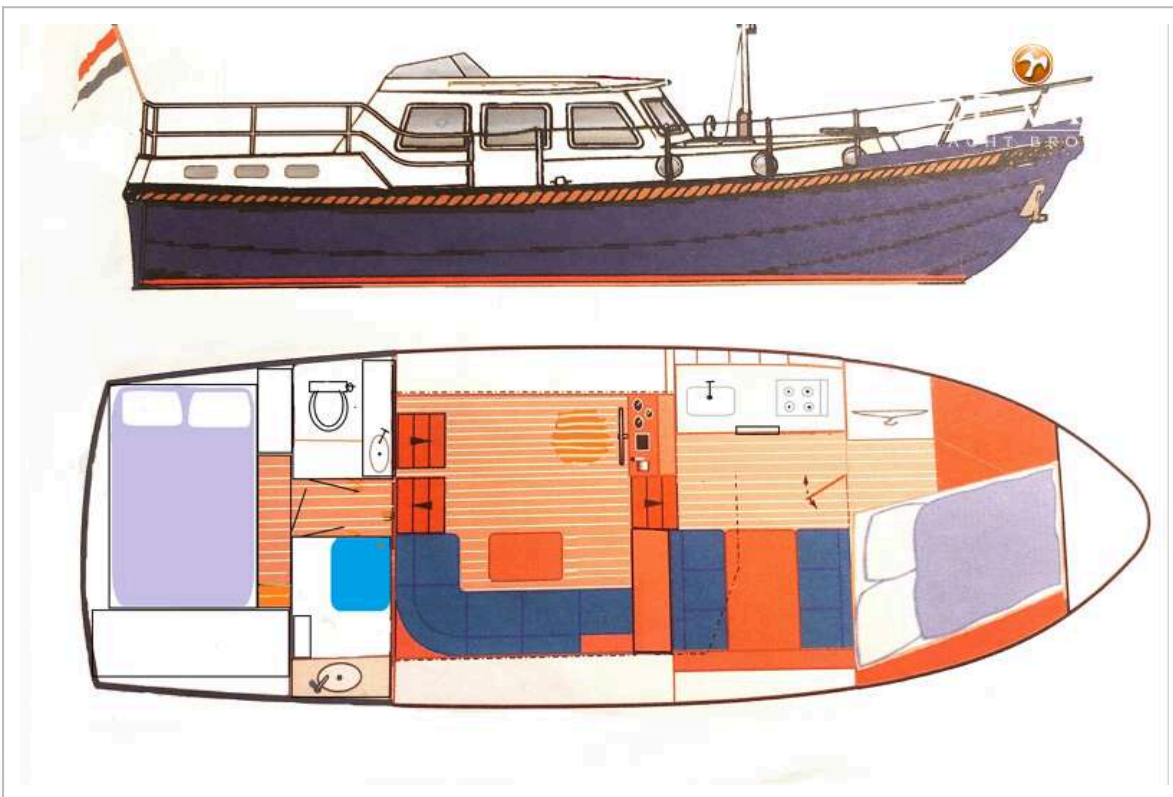


BRANDSMA VLET 10.70 AK

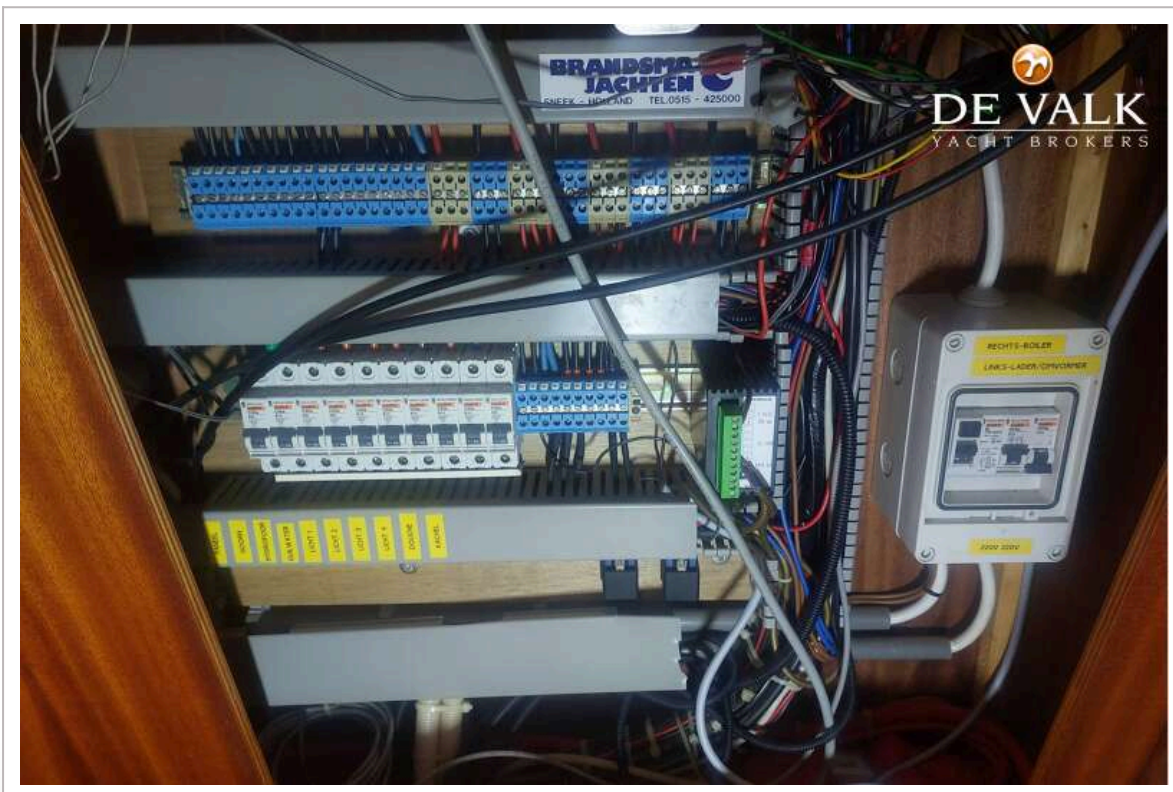
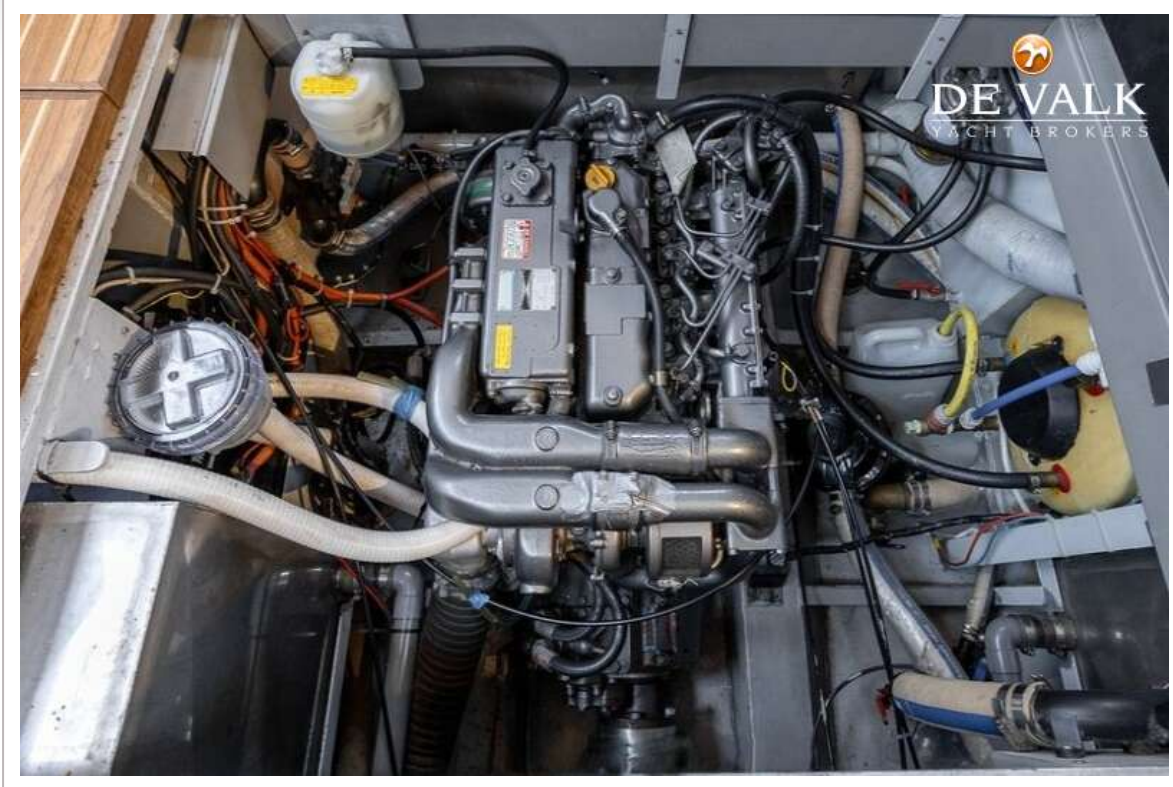


BRANDSMA VLET 10.70 AK





BRANDSMA VLET 10.70 AK



BRANDSMA VLET 10.70 AK



