



LINDEN SPIEGELKOTTER 14.50 (STABILIZERS)

LINDEN SPIEGELKOTTER 14.50 (STABILIZERS)

BROKER'S COMMENTS

Beautiful Linden Spiegelkotter 14.50 for sale! This Linden Kotter was built at Linden Jachtbouw in 2008 and launched in 2009 and is sold by her second owner. Her first owners always stored her in a boathouse. Complete equipped with a John Deere diesel engine, hydraulic bow- and stern thruster, generator, Kabola central heating etc. lots of upgrades in the last two years. Can be inspected in our salesmarina in Sneek.

Pieter Bosma

SPECIFICATIONS

Dimensions	14.50 x 4.40 x 1.30 (m)	Builder	Linden Jachtbouw
Built	2008	Cabins	2
Material	Steel	Berths	4
Engine(s)	1 x John Deere 6068 TFM-75 diesel	Hp/Kw	180.00 (hp), 132.48 (kw)
Asking price	sold (VAT)	Lying	at sales office

CONTACT

Sales office	De Valk Sneek	Telephone	+31 (0)515 42 80 30
Address	Zwolsmanweg 7 8606 KC Sneek NL	E-mail	sneek@devalk.nl

DISCLAIMER

These particulars are given in good faith as supplied but cannot be guaranteed.



LINDEN SPIEGELKOTTER 14.50 (STABILIZERS)

GENERAL

Model	LINDEN SPIEGELKOTTER 14.50 (STABILIZERS)
Type	motor yacht
LOA (m)	14,50
Beam (m)	4,40
Draft (m)	1,30
Air draft (m)	4,92
Air draft min (m)	3,37
Headroom (m)	2,00
Year built	2008
Launched	2009
Builder	Linden Jachtbouw
Country	The Netherlands
Designer	Th. Gillissen
Displacement (t)	23
CE norm	B
Hull material	steel
Hull colour	blue
Hull thickness (mm)	12/6/5 mm
Hull shape	round-bilged
Keel type	long keel
Superstructure material	steel
Superstructure (mm)	5 mm
Deck plate thickness (mm)	5 mm
Rubbing strake	rubber
Deck material	steel
Deck finish	teak
Superstructure deck finish	paint
Antifouling (year)	2024
Dorades	Stainless Steel
Window frame	aluminium



LINDEN SPIEGELKOTTER 14.50 (STABILIZERS)

Window material	double glazing
Deckhatch	Lewmar
Portholes	polymer Top windows Double glazing and cold bridge 2025
Insulation	glasswool
Radar arch	collapsible Hydraulic lowerable
Fuel tank (litre)	steel 1630 Ltr
Level indicator (fuel tank)	Vetus
Freshwater tank (litre)	stainless steel 775 Ltr
Level indicator (freshwater)	Vetus
Blackwater tank (litre)	stainless steel 150 Ltr
Level indicator (blackwater)	Vetus
Blackwater tank extraction	deck extraction + pump
Wheel steering	powersteer
Outside helm position	yes
More info on hull	this Linden Spiegelkotter has doors in her Freeboard at the side entrance.
More info on paintwork	Two componant paintsystem. The yacht has been stored inside for 90% of her live
Extra info	Parker double fuel filter
Extra info	Frensch Proof can go through the Frensch canals

ACCOMMODATION

Cabins	2
Berths	4
Interior	teak
Layout	double cabin aft with seperate shower and seperate toilet, cosy salon, dinette with U shaped kitchen, and frontcabin with bunk bed and an suite bathroom with toilet and washbasin
Floor	teak and holly
Aft deck	yes
Saloon	with U shaped settee and good storage space
Headroom saloon (m)	2,00 m.



LINDEN SPIEGELKOTTER 14.50 (STABILIZERS)

Heating	central heating Kabola HR400 Tap
Aft Cabin	yes
Dinette	yes
Opening door to aft deck	Teak
Galley	U shaped
Countertop	plastic
Sink	stainless steel
Cooker	induction Etna 4 burner
Extractor	Siemens
Microwave/oven combi	Inventum
Fridge	Drawer fridge Miele K31252U
Hot water system	on central heating
Water pressure system	electrical With Britta filter system in the kitchen and the bathroom
Dishwasher	Bosch Silence Plus
Owners cabin	French bed
Bed length (m)	2,10 m
Wardrobe	hanging/drawers/shelves
Bathroom	en suite
Toilet	separate
Toilet system	electric
Wash basin	in the bathroom In the shower and in the toilet
Shower	separate
Extra info	Shower and toilet are in separate rooms both en-suite accesable from the ownerscabin
Guest cabin 1	bunk bed
Bed length (m)	2,00 m.
Wardrobe	hanging and shelves
Bathroom	en suite
Toilet	en suite
Toilet system	electric
Wash basin	in the bathroom



LINDEN SPIEGELKOTTER 14.50 (STABILIZERS)

Extra info	escape hatch with muscitto net and blind
Extra info	all lightning on board LED
Extra info	large escape hatch in the aftship of the ownerscabin
Extra info	galley and salon has carped , when carpets are taken out there is a teak and holly wooden floor under it
Washing machine/dryer combi	Fagor
Extra info	Y-valvle between toilet and waste tank
Extra info	Heating controled with a Electrobock PT32 GST thermostat that can be controlled by GSM

MACHINERY

No of engines	1
Make	John Deere
Type	6068 TFM-75
HP	180
kW	132.48
Fuel	diesel
Year installed	2009
Engine hours	3034,6
Engine cooling system	freshwater heat exchanger
Drive	shaft
Shaft seal	yes
Engine controls	electrical Glendenning
Gearbox	hydraulic Twin Disc 2,45 ; 1 type Ng 50 50 A
Bowthruster	hydraulic Vetus Bow 160 proportioneel
Sternthruster	hydraulic Vetus Bow 160 proportioneel
Exhaust	watercooled With temp alarm
Thrust bearing	Python
Propeller type	fixed
Propeller blades	5
Propeller shaft material	stainless steel
Shaft lubrication	water



LINDEN SPIEGELKOTTER 14.50 (STABILIZERS)

Electric bilge pump	3x
Bilge alarm	yes
Electrical installation	24-240V
Generator	silent separator Mastervolt Whisper 12 in soundbox
Running hours generator	134,4 hours
Batteries	yes
Start battery	2x Red Top
Service battery	replaced 2023 4x Exite Gel 210
Generator battery	Red Top
Windlass battery	with seperate Victron battery charger 2x Red Top for the Hydro pump of the Radar Arch
Battery monitor	can be controlled by mobile phone Victron Cerbo (2025)
Battery charger/inverter	Victron Quatro 24/5000/120 (2025)
Solar panel	mounted on custom build stainless steel frame 2x 500 W with MPPT 100-50 regulator
Diode battery combiners	yes
Shorepower	with cable
Stabilizers	fin Vetus Hydraulic
Extra info	double weed filter, both mounted supplied with an outboard valve
Extra info	Generator exhaust with seperator and extra silencer and temp. alarm
Extra info	Generator has extra hydraulic pump can be used when both stern and heck truster are needed together with full power

NAVIGATION

Electric compass	Simrad
Multi control display	Simrad IS20
Depth sounder	In multi screen
Log	In multiscreen
Windset	Simrad IS20
VHF	Simrad RS81



LINDEN SPIEGELKOTTER 14.50 (STABILIZERS)

Autopilot	with rudderindicator Simrad AP28
Rudder angle indicator	in the autopilot
Radar	Simrad (2024)
Radar/plotter	Yacht Control system
AIS transceiver	CTRX
Camera	camera system with seperate cameras looking front looking aft, SB and Port side, engine room left and right, and the steering position. Camera's can be viewed on the screen on the steering position but also remote with an app on your handy. Hikvision
Navigation lights	yes
Searchlight	remote controlled (2024)
Loudhailer	Monacor (2024)
Extra info	yes
Extra info	RMC remote control for engine control bow and sternthruster

EQUIPMENT

Fixed windscreen	yes
Sprayhood	made by Dijkstra, sprayhood, with seperation for the steering position, and complete cover over de aftdeck with blinds 2025
Cockpit cushions	yes
Cockpit table	yes
Bathing platform	with teak
Boarding ladder	stainless steel
Bow ladder	yes
Deck shower	yes
Anchor	Pool
Anchor chain	30 m.
Windlass	hydraulic Vetus
Deck wash	fresch water
Davits	stainless steel The "Nieuwe David" 2024
Davits controls	Hydraulic
Sea railing	stainless steel



LINDEN SPIEGELKOTTER 14.50 (STABILIZERS)

Grab rail (superstructure)	stainless steel
Railing side opening gates	in the railing and doors in the side
Wiper	3x
Window heating	the middle window at the steering position is heated
Horn	yes
Fenders	yes
Mooring lines	yes
Alarm system	AJAX Alarm system with alarms for: Burgerly 3 sections (including camera view) water in the bilge 3x, 24V power shut-off, Shorepower, smoke detectors, in and outside sirene, and a panic button controlable via an app on your mobile device
TV	With lift
Radio-cd player	yes
Cockpit speakers	yes
Speakers in cabin	yes
Clock - barometer	clock, barometer, hygro/temperatur meter Plastime
Fire extinguisher	yes
Auto extinguisher system	Bonpet automatic extinguishing cartridge
Extra info	Outside fridge 2024
Extra info	Kickspace heating at the steering position



LINDEN SPIEGELKOTTER 14.50 (STABILIZERS)



LINDEN SPIEGELKOTTER 14.50 (STABILIZERS)



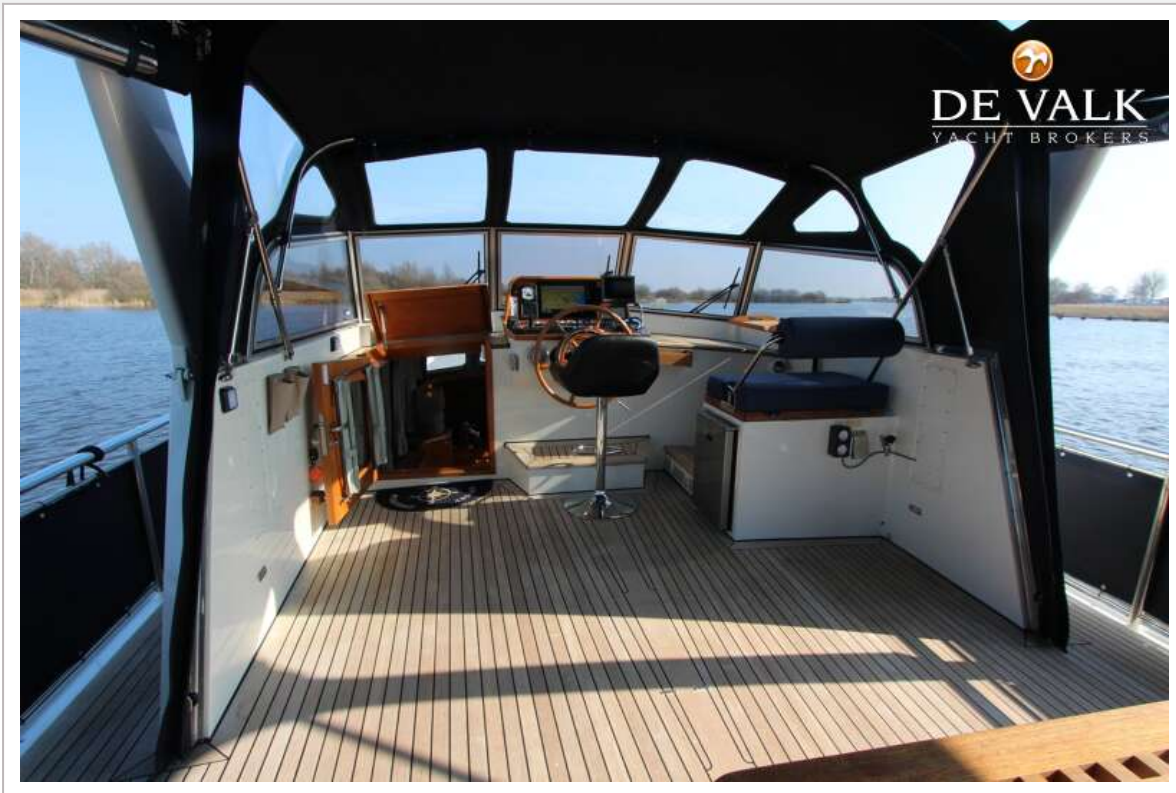
LINDEN SPIEGELKOTTER 14.50 (STABILIZERS)



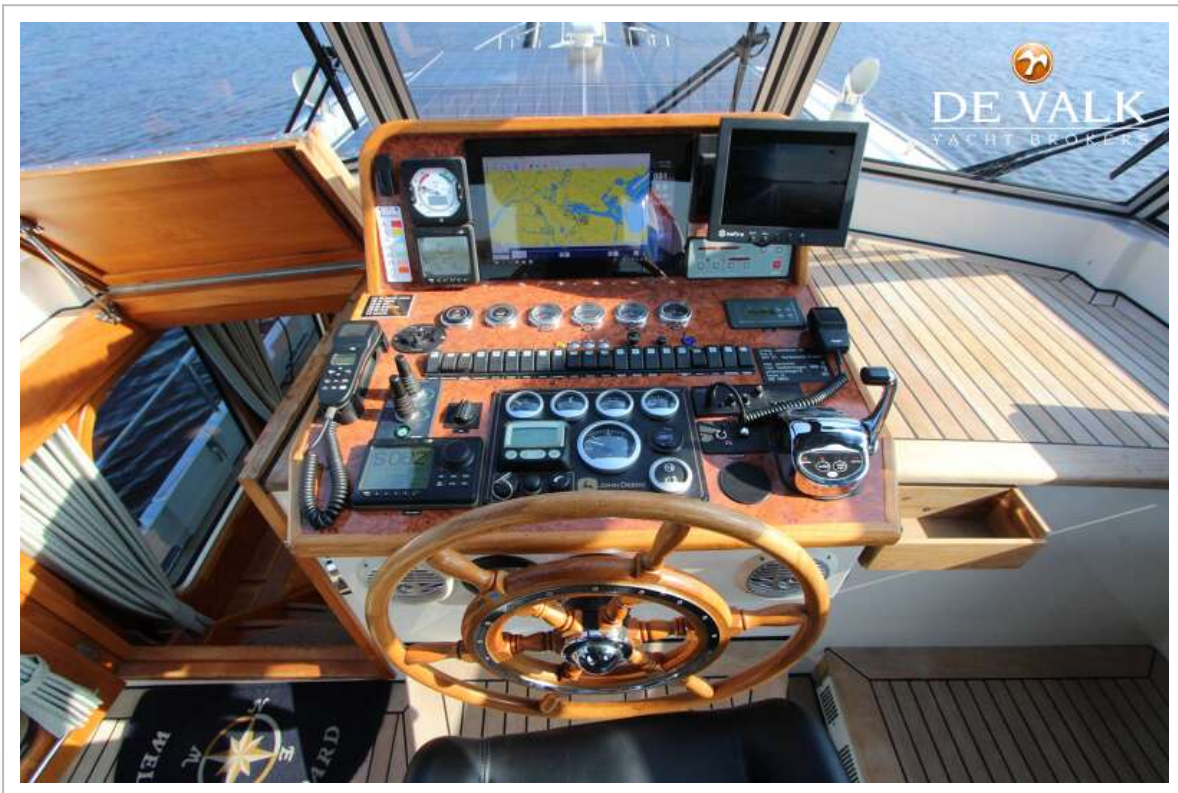
LINDEN SPIEGELKOTTER 14.50 (STABILIZERS)



LINDEN SPIEGELKOTTER 14.50 (STABILIZERS)



LINDEN SPIEGELKOTTER 14.50 (STABILIZERS)



LINDEN SPIEGELKOTTER 14.50 (STABILIZERS)



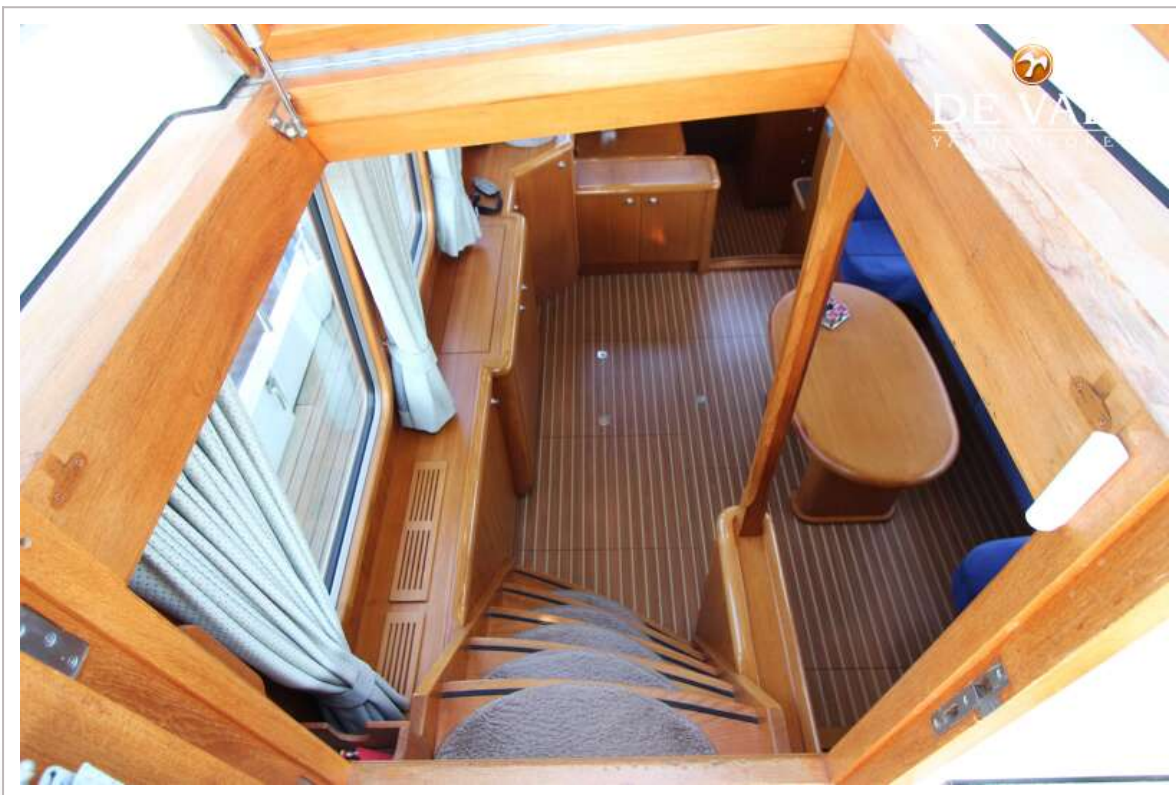
LINDEN SPIEGELKOTTER 14.50 (STABILIZERS)



LINDEN SPIEGELKOTTER 14.50 (STABILIZERS)



LINDEN SPIEGELKOTTER 14.50 (STABILIZERS)



LINDEN SPIEGELKOTTER 14.50 (STABILIZERS)



LINDEN SPIEGELKOTTER 14.50 (STABILIZERS)



LINDEN SPIEGELKOTTER 14.50 (STABILIZERS)



LINDEN SPIEGELKOTTER 14.50 (STABILIZERS)



LINDEN SPIEGELKOTTER 14.50 (STABILIZERS)



LINDEN SPIEGELKOTTER 14.50 (STABILIZERS)



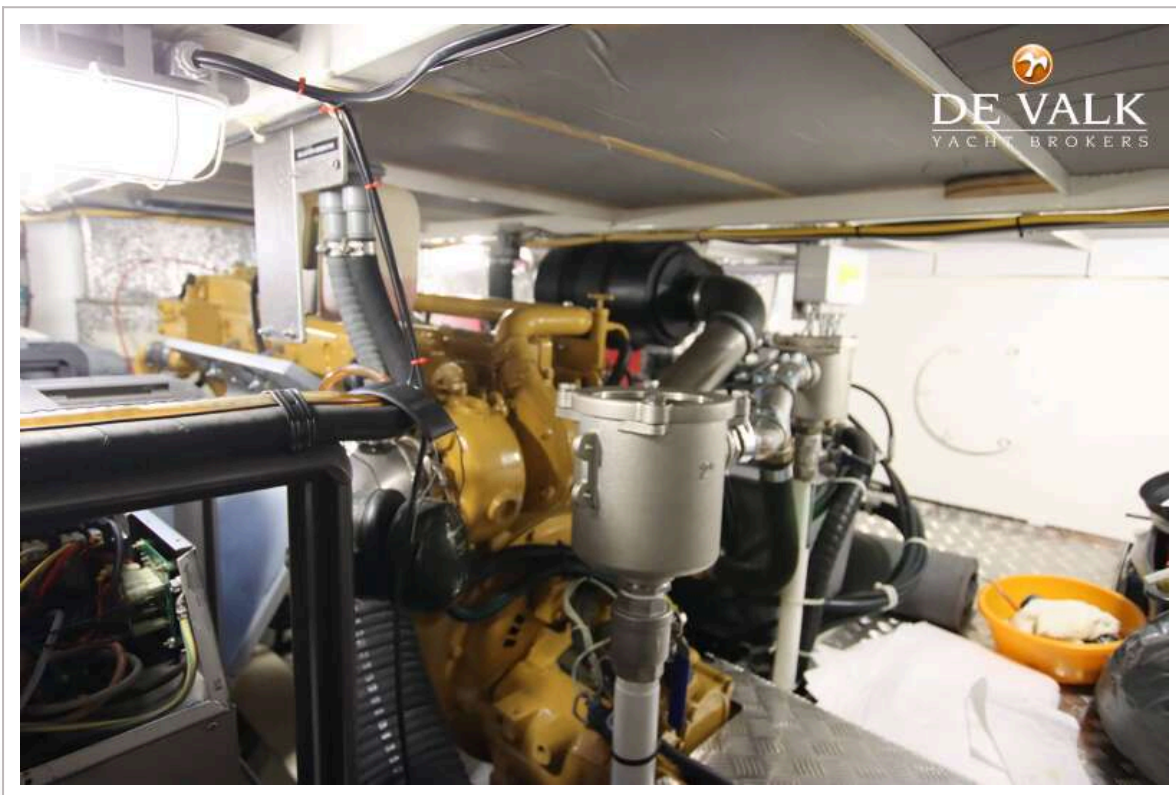
LINDEN SPIEGELKOTTER 14.50 (STABILIZERS)



LINDEN SPIEGELKOTTER 14.50 (STABILIZERS)



LINDEN SPIEGELKOTTER 14.50 (STABILIZERS)



LINDEN SPIEGELKOTTER 14.50 (STABILIZERS)

