



DE VALK  
YACHT BROKERS



WAUQUIEZ CENTURION 49



DE VALK  
YACHT BROKERS

BROKERAGE | CHARTER | BERTHS | FINANCE | INSURANCE | YACHT MANAGEMENT

# WAUQUIEZ CENTURION 49

## BROKER'S COMMENTS

This impressive Centurion 49 was designed by Edward Dubois and hand built in fiberglass by the highly reputable Wauquiez yard in France. She was constructed with strong internal framing and longitudinal reinforcements designed for comfortable long-distance sailing. She is a true performance blue water cruiser superbly equipped with extensive upgrades (all documented) and a huge inventory. The current owner purchased her in 2009 and she is now ready to take her next owners on their next adventure.

*Zoë Ann Clark*

## SPECIFICATIONS

<b>Dimensions</b>	15.20 x 4.20 x 2.20 (m)	<b>Builder</b>	Wauquiez
<b>Built</b>	1991	<b>Cabins</b>	3
<b>Material</b>	GRP	<b>Berths</b>	6
<b>Engine(s)</b>	1 x Yanmar 4JH2-HTE diesel	<b>Hp/Kw</b>	76.00 (hp), 55.94 (kw)
<b>Asking price</b>	€ 115.000 (VAT Not paid)	<b>Lying</b>	at sales office

## CONTACT

<b>Sales office</b>	De Valk Almeria	<b>Telephone</b>	+34 950 497 825
<b>Address</b>	Puerto Deportivo, Darsena de la Batea 42 04711 Almerimar ES	<b>E-mail</b>	almeria@devalk.nl

## DISCLAIMER

These particulars are given in good faith as supplied but cannot be guaranteed.



# WAUQUIEZ CENTURION 49

## GENERAL

Model	WAUQUIEZ CENTURION 49
Type	sailing yacht
LOA (m)	15,20
LWL (m)	13,10
Beam (m)	4,20
Draft (m)	2,20
Air draft (m)	22,00
Headroom (m)	1,88
Year built	1991
Builder	Wauquiez
Country	France
Designer	Ed Dubois/Dubois architects
Displacement (t)	19
CE norm	NA
Hull material	GRP
Hull colour	white
Hull thickness (mm)	>25mm
Hull shape	V-shaped hull
Keel type	fin keel
Deck material	GRP Sandwich
Deck finish	teak
Superstructure deck finish	non-skid paint Awlgrip
Cockpit deck finish	Teak-seats new 2012, teak floor, gelcoat finished FRP structure
Antifouling (year)	Micron 99 (2024)
Dorades	6
Window frame	aluminium
Window material	perspex
Deckhatch	Goiot acrylic
Radar arch	non collapsible Large Stainless Steel arch at stern Radar/Navcom/Solar
Fuel tank (litre)	stainless steel 312



Level indicator (fuel tank)	Gauge at helm using Moeller reed relay sensor for reliability
Freshwater tank (litre)	stainless steel 4 x 150
Level indicator (freshwater)	Gauge at helm using Moeller reed relay sensor for reliability
Blackwater tank (litre)	epoxy 140
Blackwater tank extraction	Dip Tube and diaphragm pump overboard or deck fitting
Wheel steering	cable steering
Inside helm position	Second A/P control at Nav station
Outside helm position	cable steering
Emergency tiller	yes
More info on paintwork	Hull topsides, and also cabin deck area painted in 2014
Extra info	Custom Keel with shallower draft 2.2m

## ACCOMMODATION

Cabins	3
Berths	6
Crew cabin	Forward berth converted to utility / forward sail locker area
Floor	Teak/Holley Plywood 12mm approx.
Doghouse	Hard Dodger top with soft panels
Saloon	Large Table and ample seating on staboard side
Headroom saloon (m)	1.88
Heating	Webasto DWB2010 hydronic heater, thermostat each cabin.
Air-conditioning	Reverse Cycle 16,000 BTU Dometic AC and heat
Navigation center	Nav Station wth instruments and chart table desk
Chart table	72cmx115cm Nav station with storage for charts below hinged desk
Aft Cabin	Two guest per aft cabin or ample room for one.
Convertible berth	The Salon table can drop to create additional sleeping place for
Galley	Linear Galley across from Saloon table, behind Nav Station
Countertop	Ceramic countertop with refrigeration and freezer hatches
Sink	stainless steel
Cooker	Princess three burner propane stove, original



<b>Microwave</b>	yes
<b>Fridge</b>	Two refrigerators: one drawer fridge and one hatch style fridge
<b>Freezer</b>	1 hatch style freezer, plus 1 portable needs recharge
<b>Hot water system</b>	Isotemp stainless
<b>Owners cabin</b>	yes
<b>Bed length (m)</b>	2.03
<b>Wardrobe</b>	Hanging Closet, 2 large drawers under bed, and 3 small drawers
<b>Bathroom</b>	en suite
<b>Toilet</b>	en suite Raritan
<b>Toilet system</b>	manual Drains to lift pump
<b>Wash basin</b>	in the bathroom Stainless Basin (upgrade) in forward head with hot/cold water.
<b>Shower</b>	en suite Hot and Cold water with temperature controlled thermostatic valv
<b>Extra info</b>	Make up settee / desk for dressing
<b>Guest cabin 1</b>	yes
<b>Bed length (m)</b>	2.01
<b>Wardrobe</b>	Converted to drawer refrigerator
<b>Bathroom</b>	shared
<b>Toilet</b>	shared
<b>Toilet system</b>	electric Marine Excellence Raritan macerating toilet
<b>Wash basin</b>	at the toilet Stainless Wash basin with hot/cold water, upgrades from orig
<b>Shower</b>	shared Thermostatically controlled hot and cold shower mixer
<b>Extra info</b>	Head flooring rebuilt in teak and Holly plywood.
<b>Guest cabin 2</b>	yes
<b>Bed length (m)</b>	2.01
<b>Wardrobe</b>	Hanging locker 3 small drawers.
<b>Bathroom</b>	shared

## MACHINERY

<b>No of engines</b>	1
----------------------	---



<b>Make</b>	Yanmar
<b>Type</b>	4JH2-HTE
<b>HP</b>	76
<b>kW</b>	55.94
<b>Fuel</b>	diesel
<b>Year of overhaul</b>	Full top/bottom rebuild in 2023. (Details available)
<b>Maximum speed (kn)</b>	8,5
<b>Cruising speed (kn)</b>	6,5
<b>Consumption (l/hr)</b>	4,5
<b>Range (nm)</b>	400
<b>Drive</b>	shaft
<b>Shaft seal</b>	Tides Marine Shaft seal,
<b>Engine controls</b>	Teleflex Single lever control on wheel pedestal
<b>Gearbox</b>	ZF15 MIV Vee drive ( new 2024)
<b>Electric engine</b>	55kW ( 76 HP)
<b>Bowthruster</b>	Sidepower SE100/185T s/n #1016291 (new 2010) , APEM 1D15F1500 Jo
<b>Exhaust</b>	Wet Exhaust HDI cast s/s water elbow, Verna-Lift fibreglass muff
<b>Propeller type</b>	PYI/ Maxprop EZ model 99420 S/N #19920153 (installed 2020)
<b>Propeller blades</b>	4 blade
<b>Propeller shaft material</b>	Aqualloy AQ22 M35 x 82inches Stainless (supplied by General Prop
<b>Shaft lubrication</b>	Water lubricated
<b>Manual bilge pump</b>	Bosworth diaphragm pump mounted at stern near helm
<b>Electric bilge pump</b>	Primary/Secondary 1500 (More info available)
<b>Bilge alarm</b>	Loud fire alarm mechanical bell 85dBA 12V
<b>Generator</b>	NextGeneration Power 3.5KW, w/ 1-cylinder 6HP Kubota Diesel engi
<b>Running hours generator</b>	<1900
<b>Batteries</b>	House: 5+3 8xVictron AGM 110AH VLRA
<b>Start battery</b>	100AH AGM
<b>Generator battery</b>	70AH AGM



<b>Bowthruster battery</b>	Bow Thruster connected to 3 house bankbatteries forward of mast,
<b>Windlass battery</b>	Windlass connected to same bus system as Bow Thruster
<b>Battery monitor</b>	BMV-100 Victron with 500A , interfaced with NMEA2000 bus, Color
<b>Battery charger</b>	3 Chargers provide redundancy & can be configured to max charge
<b>Battery charger/inverter</b>	3kW Victron Multiplus, wired in place. 2kW multiplus to be wired
<b>Wind generator</b>	Silent Wind Generator mounted on aft pole, with MPPT charger
<b>Solar panel</b>	1x 2xSunpower 170W panels mounted on arch 80/20 frame, 1xSunpow
<b>Shorepower</b>	120/230 30Ampere US plug, 60 Hz
<b>Insulation transformer</b>	Victron auto switch 120/240V transformer.
<b>Watermaker</b>	Spectra Ventura 150 12 V (more info available)
<b>Extra info</b>	Alternator -Balmar 100A aux alt with Balmar external regulator
<b>Extra info</b>	Victron Color Control GX Display to control Multiplus charger
<b>Extra info</b>	More details availbale on Power Monitor

## NAVIGATION

<b>Compass</b>	Plath compass (seals changed, rebuilt 2024)
<b>Multi control display</b>	3 chart plotters. 1- Garmin 4212 ( helm station) 1. Garmin 4212
<b>Depth sounder</b>	Airmar transducer NMEA2000
<b>Depth sounder/log</b>	Airmar transducer NMEA2000
<b>Log</b>	UST800 Airmar ultrasonic ( needs troubleshooting/ repair)
<b>Windset</b>	B&G wireless Masthead WS320 . FOUR Triton multidiplays installed
<b>VHF</b>	1. SIMRAD RS40 ( new 2022) at Nav Station with HS40 remote ( new
<b>Autopilot</b>	RayMarine S3G controller with Type II autopilot. Spare Autopilo
<b>Rudder angle indicator</b>	RayMarine autopilot sensor mounted on rudder quadrant with custo
<b>Radar</b>	GMR424 XHD2 Garmin 4ft open array networked on 3 plotters
<b>GPS</b>	B&G ZG-100 GPS Sensor



<b>Electronic chart(s)</b>	Mediterranean, US & Canada, Eastern Caribbean (some will expire)
<b>AIS transceiver</b>	Garmin AIS800 with dedicated GPS receiver (new 2022) MMSI 36742
<b>EPIRB</b>	ACR PLB37 with hydrostatic release on aft arch.
<b>Navigation lights</b>	Red, Green, Aft, and Tricolor at masthead, Anchor Light, Steamin
<b>Loudhailer</b>	Mounted on aft arch / connected to radio, doubles as Fog Horn
<b>Extra info</b>	Starlink/ Sat Iridium Go/Maretron multi display/Extra Autopilot
<b>Extra info</b>	SSB Radio ICOM M802 with Pactor Modem

## EQUIPMENT

<b>Sprayhood with grab rail</b>	Grab Rails on hard dodger on port, starboard, and aft.
<b>Fixed hardtop</b>	Hard Dodger, custom made, -acrylic semirigid panels on zippers
<b>Bimini</b>	Bimini on custom stainless mount -recommend new mounting method
<b>Cockpit cushions</b>	Closed Cell foam cushions ( new covers 2024)
<b>Cockpit table</b>	Custom teak cockpit table ( new 2017)
<b>Bathing platform</b>	Boat has a boarding area at stern for boarding
<b>Boarding ladder</b>	Boat has boarding ladder at stern, Stainless with teak steps.
<b>Gangway</b>	Passerelle at stern
<b>Deck shower</b>	Shower handle and hose inside compartment at stern, cold water
<b>Anchor</b>	SPADE 35 kG galvanized anchor (new 2023) with WASI ball mount.
<b>Anchor chain</b>	120 meters Lofrans galvanised chain ( new 2023)
<b>Anchor 2</b>	Fortress large folding anchor
<b>Chain counter</b>	AA560 Auto Anchor Chain Counter mounted at helm on port side
<b>Other ground tackle</b>	Two Mantis 3/8 inch chain hooks for snubber use.
<b>Windlass</b>	MAXWELL 3500 vertical windlass 1.75 tons (new 2022)
<b>Deck wash</b>	Groco pump type deck wash system with IPS 383 pressure switch
<b>Dinghy</b>	CARIBE SeaRover 290 Hypalon dinghy S/N CN HNB42165E222
<b>Outboard</b>	2004? Johnson 15 HP (Serviced 2024) two stroke





<b>Outboard support</b>	Welded custom mount part of aft arch and davit system
<b>Davits</b>	Custom heavy duty 0.089 wall thickness stainless steel tubing
<b>Davits controls</b>	Manual 4:1 tackle, cam cleats
<b>Grab rail (superstructure)</b>	Heavy Teak Grab rails, varnished with two part varnish
<b>Pushpit</b>	Stock pushpit integrated and welded into the overall arch
<b>Pulpit</b>	Custom pulpit ( 2013) with step rail on top
<b>Life raft</b>	Viking 6 person ResC-you offshore raft (new 2020)
<b>Life raft (pers)</b>	6 person
<b>Last life raft survey</b>	Inspected by Viking Italy Central facility in 2024
<b>Lifejackets</b>	Mae West type life preservers
<b>Danbuoy</b>	SWITLIK MOM 8-S autoinflating marker ( new 2020, needs inspecti
<b>Safety lines on deck</b>	Two Wichard Jacklines onboard, for port and starboard
<b>Rope cutter</b>	AB Marine Shark Shaft line cutter ( new 2020)
<b>Horn</b>	See further information
<b>Binocular</b>	Fujinon 7x50 binoculars aboard.
<b>Radar reflector</b>	ECHOMAX 230 radar reflectoron mast
<b>Fenders</b>	yes
<b>Mooring lines</b>	yes
<b>Tools</b>	yes
<b>Alarm system</b>	Siren Marine Alarm system. Bilge,voltage,IR intrusion sensors.
<b>TV</b>	TV/ Computer: All in one Samsung ATIV
<b>Radio-cd player</b>	Alpine CDE-SXM145BT Radio /CD player ( new 2019)
<b>Cockpit speakers</b>	Need replacement
<b>Speakers in salon</b>	Bose Speakers fore and aaft of the salon starboard side
<b>Clock - barometer</b>	Barometer - Wheems and Plath mechanical barometer
<b>Fire extinguisher</b>	3x Kidde L635007 15lbs rated ABC, one halon, one kitchen
<b>Latest extinguisher survey</b>	Unknown, sold as is.

## RIGGING

<b>Rigging</b>	Sloop with Solent inner forestay, split backstay, single D1
----------------	---

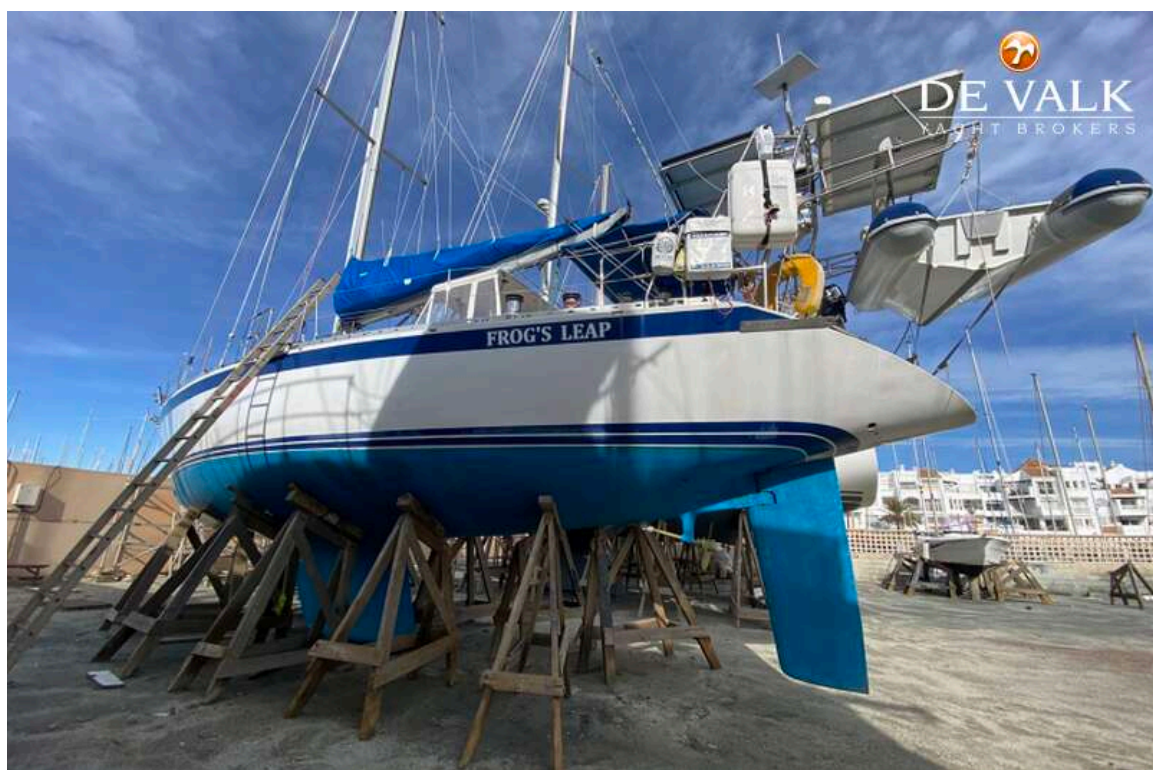
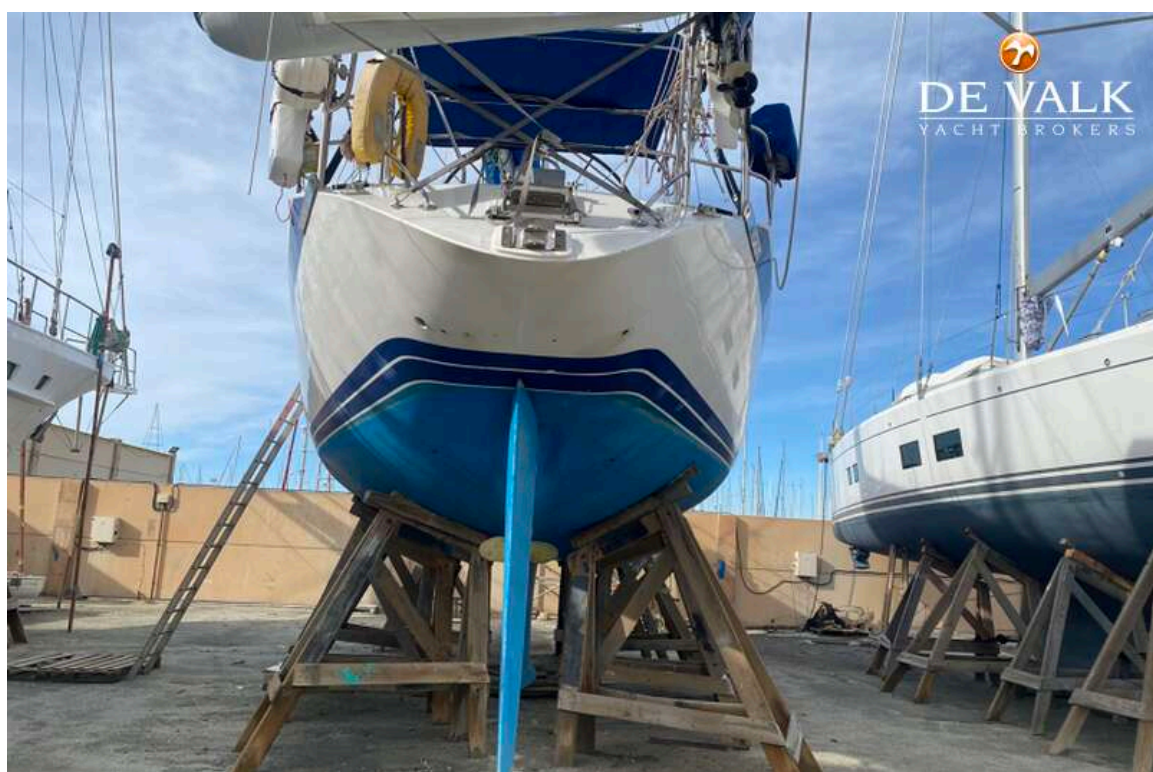


<b>Standing rigging</b>	Full replacement 2024
<b>Brand mast</b>	Sparcraft
<b>Material mast</b>	aluminium
<b>Spreaders</b>	Three foil shaped spreaders, discontinuous rigging
<b>Keel stepped mast</b>	Mast step on main bulkhead longitudinal
<b>Mainsail cover</b>	Stack Pack (MAC) modified for strenght (zipper end needs stitch)
<b>Battcars</b>	STRONG slide track system by Tides Marine
<b>Fully battened mainsail</b>	Full Batten Quantum Mainsail, 597 sq ft (56m2), 9 oz, 3 reef pts
<b>Cutterstay</b>	Solent Stay with roller furling on inner jib
<b>Genoa</b>	Quantum sails 120% 9 oz dacron 719 sq ft (67m2)
<b>Genoa furler</b>	Harken MARK III Unit 2.5
<b>Genoa cover</b>	UV white Sunbrella on Furling Genoa
<b>A-symetric spi</b>	Asymetric cruising spinnaker .75 oz in ATN sock system, sheets
<b>Staysail</b>	Quantum sails Solent 95% of inner triangle 374 ft2 (35m2)
<b>Removable innerforestay</b>	Permanent roller furler
<b>Trysail</b>	(three reefs in mainsail)
<b>Stormjib</b>	Hank On sail, can be modified if desired (Prefer Solent sail)
<b>Reefing System</b>	Schaeffer Solent sail furler 3100-44 (Installed 201)
<b>Backstay adjuster</b>	Harken dual hydraulic pistons for split backstay helm new 2018
<b>Boomvang</b>	hydraulic Navtec boom vang controlled from helm panel (Rebuilt 2014)
<b>Primary sheet winch</b>	Harken Barbarossa 66.2
<b>Secondary sheet winch</b>	Harken Barbarossa 56.2
<b>Halyard winches</b>	Harken Barbarossa port and starboard at mast
<b>Spinnaker winch</b>	Running Backstay Harken Barbarossa 42.2
<b>Reefing winch</b>	Genoa Harken Barbarossa 42.3
<b>Multifunctional winches</b>	Port and Starboard deck house winches for mainsheet, pole, reefs
<b>Spi-pole</b>	Spinnaker pole, slide car track with control winch on mast
<b>Isolated backstay</b>	SSB Insulators for backstay replaced 2024 along with rig refit
<b>Extra info</b>	Port and Starboard Triple Spinlock stoppers on deckhouse
<b>Extra info</b>	Port and Starboard custom triple pad eyes on deck house,

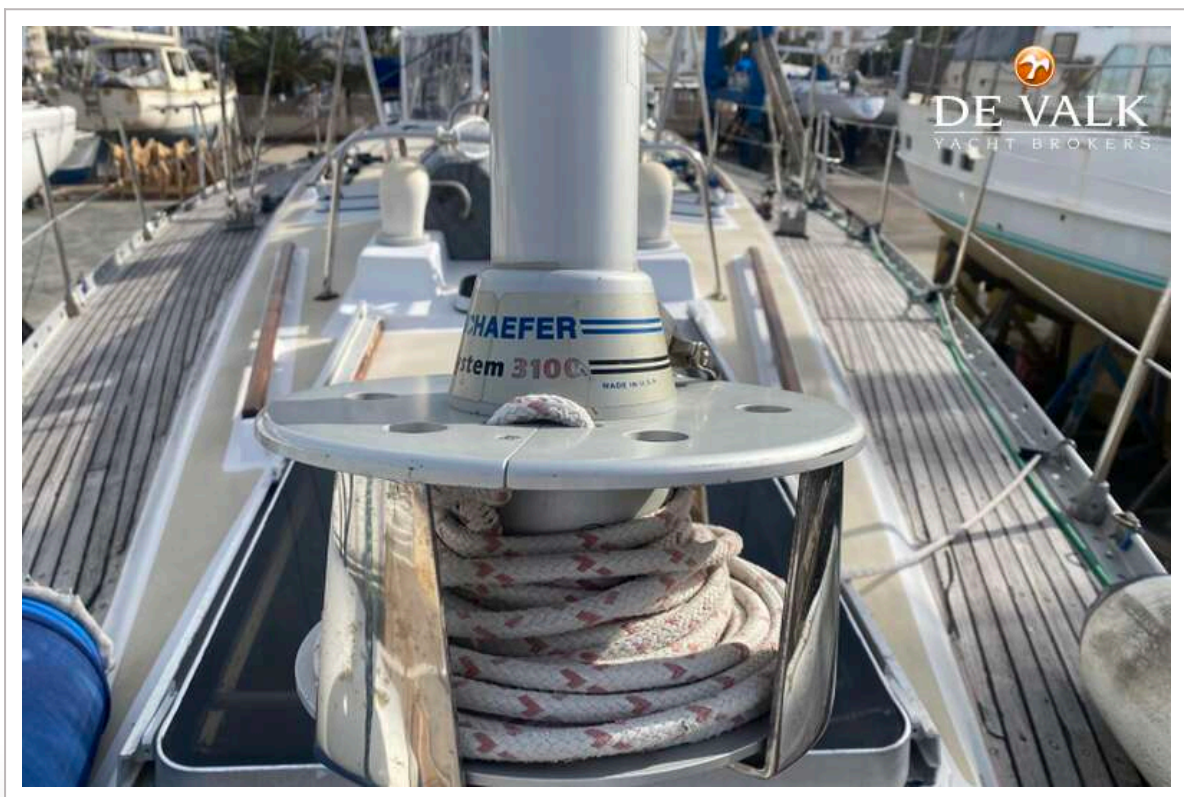












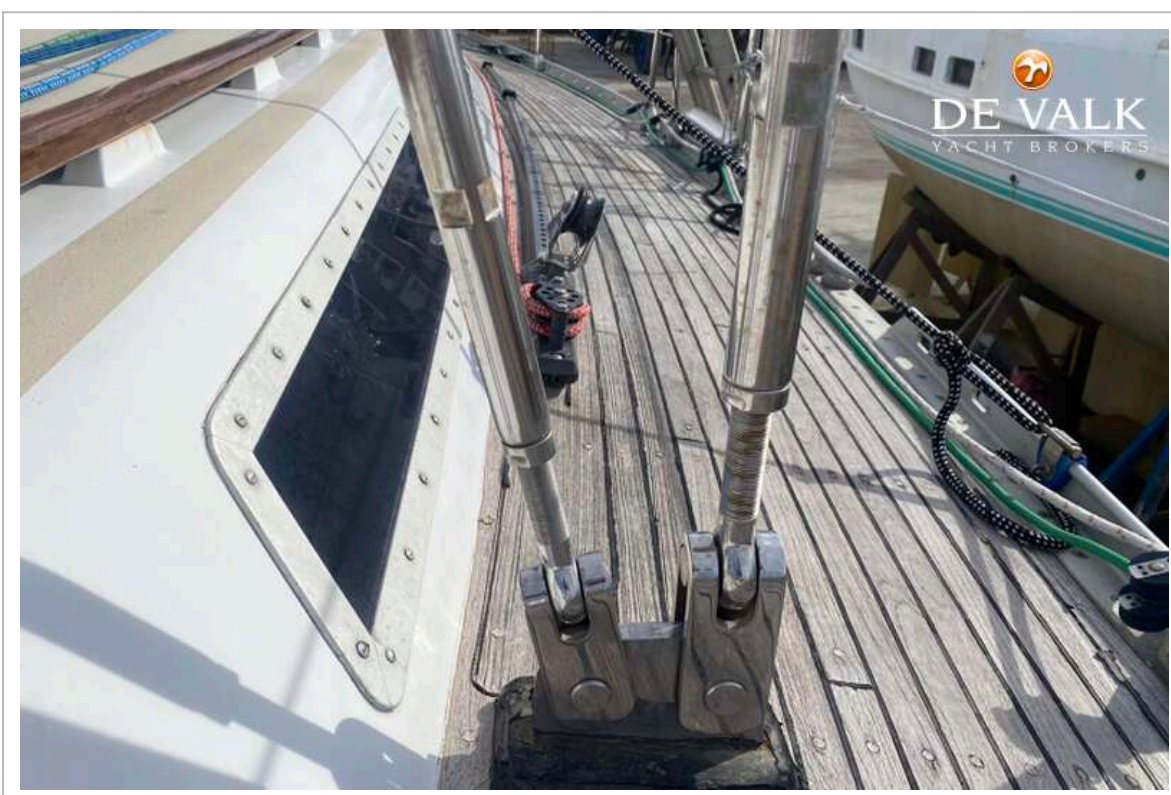


# WAUQUIEZ CENTURION 49





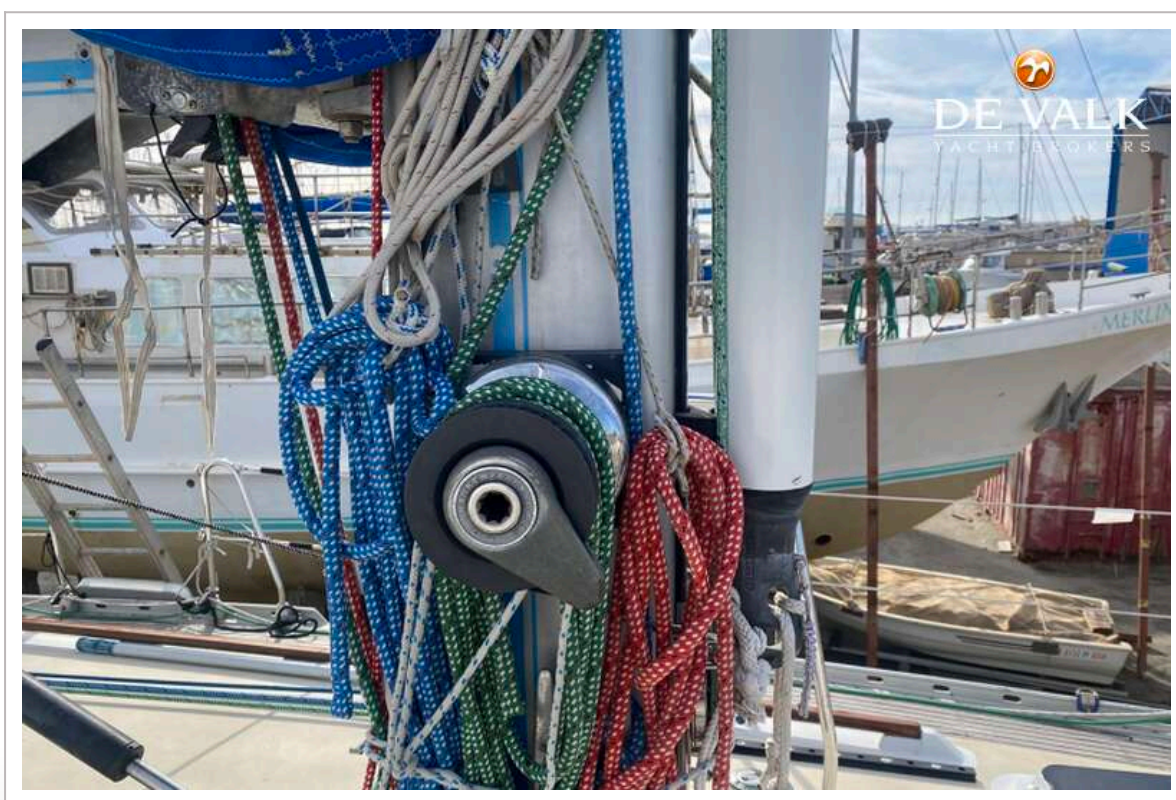
# WAUQUIEZ CENTURION 49



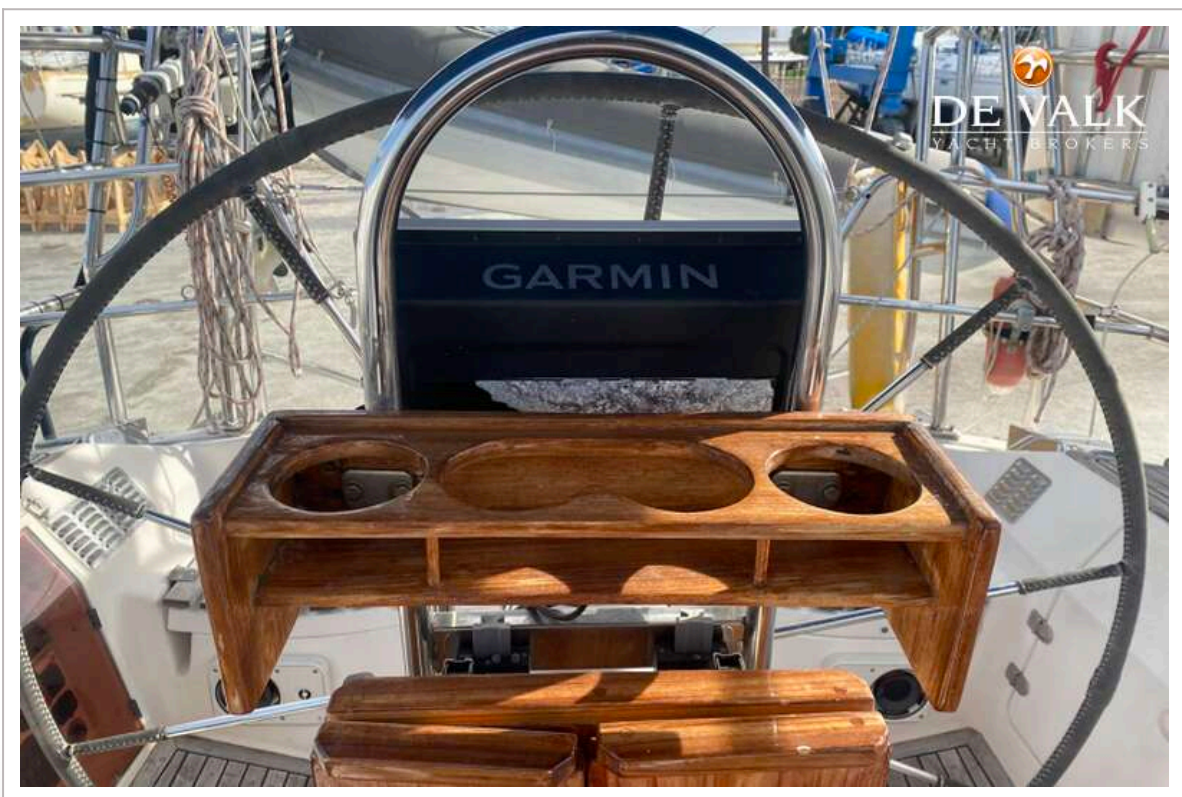
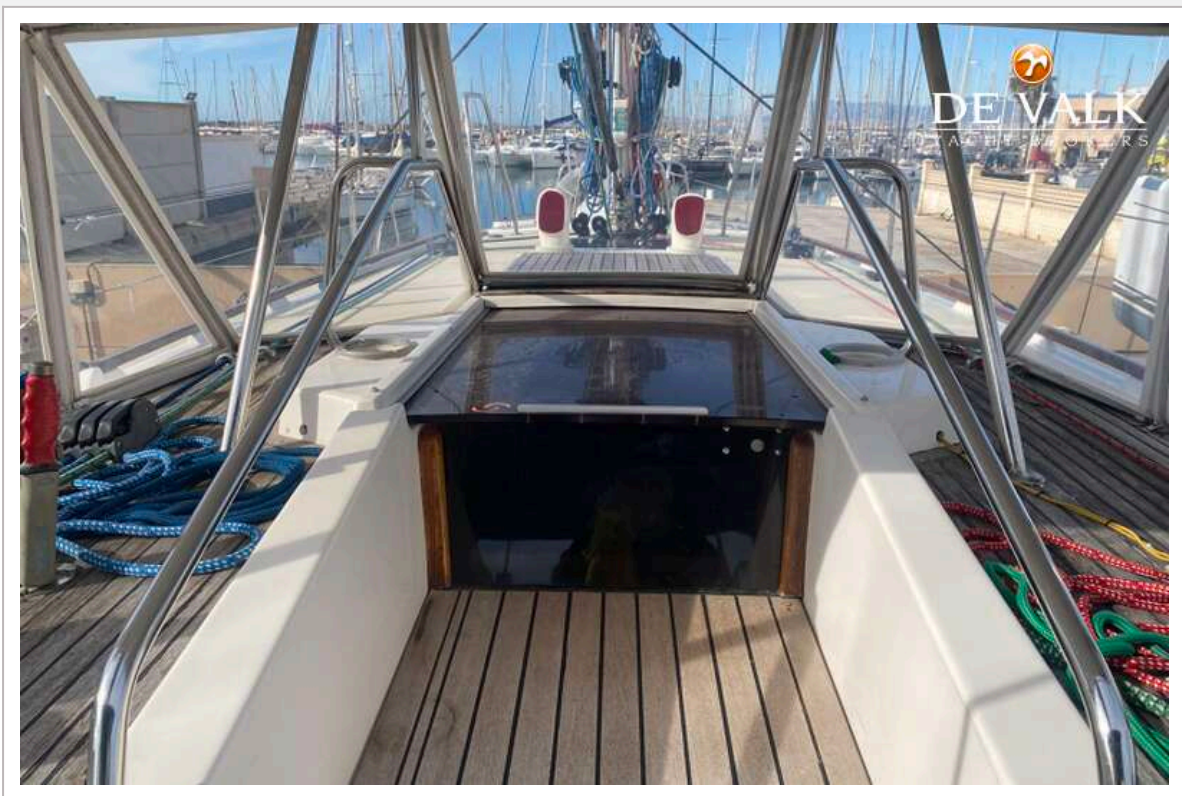




















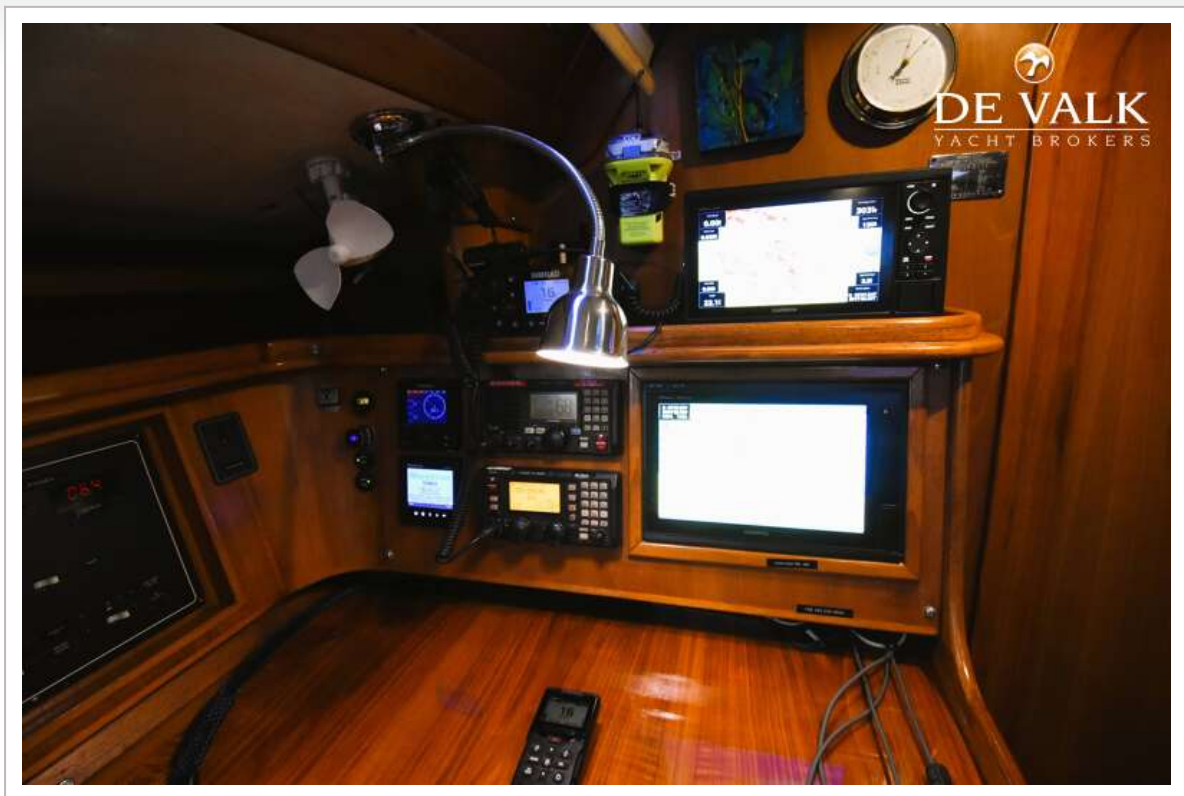
# WAUQUIEZ CENTURION 49





# WAUQUIEZ CENTURION 49







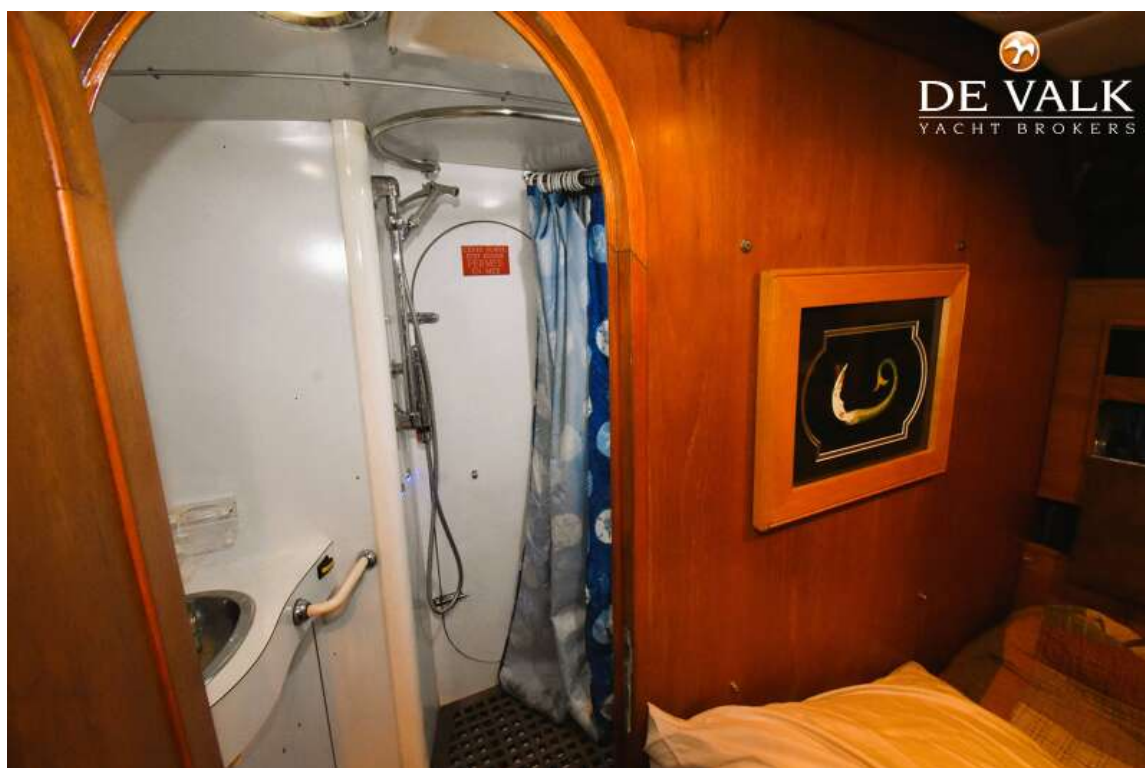
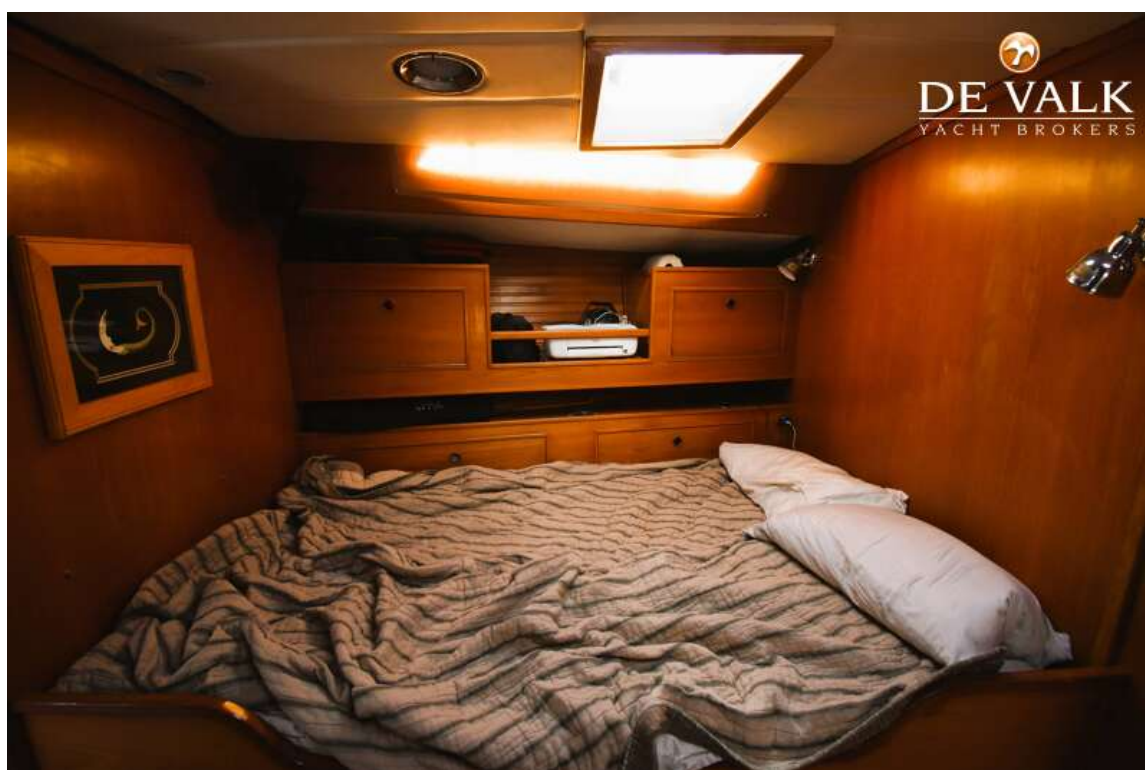
# WAUQUIEZ CENTURION 49





# WAUQUIEZ CENTURION 49







# WAUQUIEZ CENTURION 49

