



DE VALK
YACHT BROKERS



FORMULA 45 YACHT.



DE VALK
YACHT BROKERS

FORMULA 45 YACHT.

BROKER'S COMMENTS

This Formula 45 Yacht is in outstanding condition after major updates in 2025. The engines were fully overhauled and have only 80 hours, and brand-new IPS pods were installed. She features new cushions, a new sound system, a new fridge with ice maker, etc. The high-gloss cherry interior with Corian finishes offers a warm, premium feel. Fully polished in 2025, she looks like new. A rare opportunity to acquire a thoroughly updated Formula 45 in top condition.

Jochem Heijermans

SPECIFICATIONS

Dimensions	14.68 x 4.24 x 0.99 (m)	Builder	Thunderbird Products
Built	2008	Cabins	2
Material	GRP	Berths	4
Engine(s)	2 x Volvo Penta D6-435D-A diesel	Hp/Kw	2 x 435.00 (hp), 320.16 (kw)
Asking price	€ 289.000 (VAT Paid)	Lying	elsewhere / Not at sales office

CONTACT

Sales office	De Valk Sint Annaland B.V.	Telephone	+31 166 601 000
Address	Koelhuisweg 4 4697 RM Sint Annaland NL	E-mail	sintannaland@devalk.nl

DISCLAIMER

These particulars are given in good faith as supplied but cannot be guaranteed.



FORMULA 45 YACHT.

GENERAL

Model	FORMULA 45 YACHT.
Type	motor yacht
LOA (m)	14,68
Beam (m)	4,24
Draft (m)	0,99
Air draft (m)	4,90
Headroom (m)	2,11
Year built	2008
Builder	Thunderbird Products
Country	U.S.A.
Designer	John Adams p
Displacement (t)	14,43
CE norm	C
Hull material	GRP
Hull colour	Light blue
Hull shape	deep-V
Superstructure material	steel
Rubbing strake	stainless steel
Deck material	epoxy
Deck finish	non-skid moulded in
Superstructure deck finish	non-skid moulded in
Cockpit deck finish	synthetic teak
Antifouling (year)	(2025)
Window frame	aluminium
Window material	tempered glass
Deckhatch	yes
Portholes	aluminium
Fuel tank (litre)	1325
Freshwater tank (litre)	379
Blackwater tank (litre)	polyethylene 284



FORMULA 45 YACHT.

More info on hull

Polished (2025)

ACCOMMODATION

Cabins	2
Berths	4
Interior	cherry Modern–classic luxury
Floor	parquet
Open cockpit	yes
Saloon	yes
Headroom saloon (m)	2,11
Sliding roof	electric
Air-conditioning	reverse cycle airco
Aft Cabin	yes
Sliding door to cockpit	yes
Galley	yes
Countertop	corian
Sink	yes
Cooker	induction
Microwave/oven combi	yes
Fridge	2x
Freezer	yes
Hot water system	220V + engine
Water pressure system	electrical
Ice maker	(2025)
Owners cabin	French bed
Wardrobe	hanging and shelves
Bathroom	separate
Toilet	separate
Toilet system	electric
Wash basin	in the bathroom
Shower	separate



FORMULA 45 YACHT.

Guest cabin 1	twin single
Wardrobe	hanging and shelves
Bathroom	en suite
Toilet	en suite
Toilet system	electric
Wash basin	in the cabin
Shower	en suite

MACHINERY

No of engines	2
Make	Volvo Penta
Type	D6-435D-A
HP	435
kW	320.16
Fuel	diesel
Year installed	2008
Year of overhaul	2025
Maximum speed (kn)	32
Cruising speed (kn)	24
Engine hours	80
Engine cooling system	freshwater heat exchanger
Drive	IPS
Engine controls	electrical
Exhaust	watercooled
Manual bilge pump	yes
Electric bilge pump	yes
Electrical installation	12V/220V
Generator	silent separator Westerbeke 16KV _a
Running hours generator	335
Batteries	(2025)
Start battery	(2025)



FORMULA 45 YACHT.

Service battery	yes
Battery monitor	yes
Battery charger	Charles 12V/40Ah, Charles 12V/80Ah
Shorepower	with cable (2025)
Trimtabs	3x
Extra info	Volvo Penta IPS Pods (2025)
Extra info	Underwater lights
Extra info	Generator major maintenance (2025)

NAVIGATION

Multi control display	Raymarine
Depth sounder/log	Raymarine
VHF	Raymarine
Autopilot	Raymarine
Rudder angle indicator	yes
Radar/GPS/plotter	2x Raymarine Aixom 12" (2025)
AIS transceiver	Raymarine (2025)
Navigation lights	yes

EQUIPMENT

Cockpit cover	(2025)
Cockpit cushions	(2025)
Cockpit table	yes
Bathing platform	Hydraulic
Boarding ladder	stainless steel
Deck shower	yes
Anchor	yes
Windlass	electrical
Deck wash	yes
Sea railing	stainless steel
Grab rail (superstructure)	stainless steel



FORMULA 45 YACHT.

Horn	electric
Fenders	yes
Mooring lines	yes
TV	yes
Radio	yes
Surround Sound System	Bose no amplifier
Sub-woofer	yes
Cockpit speakers	JL audio (2025)
Speakers in salon	yes



FORMULA 45 YACHT.



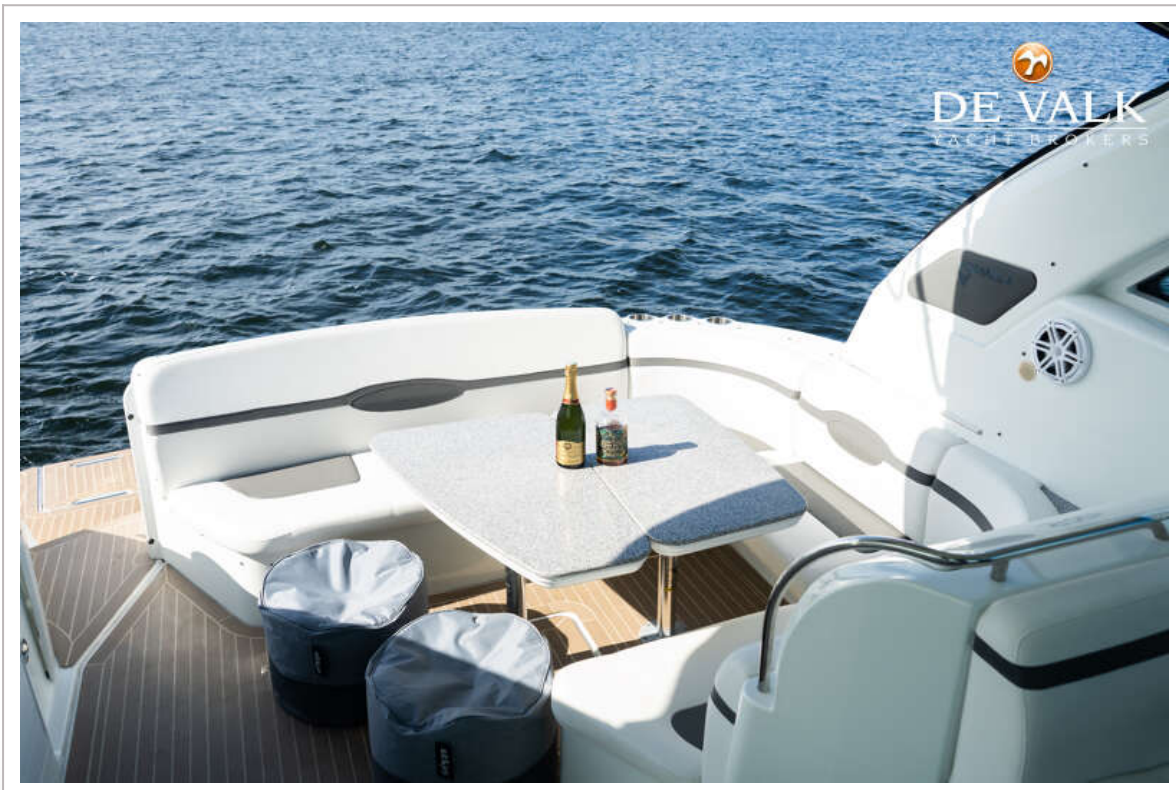
FORMULA 45 YACHT.



FORMULA 45 YACHT.



FORMULA 45 YACHT.



FORMULA 45 YACHT.



FORMULA 45 YACHT.



FORMULA 45 YACHT.



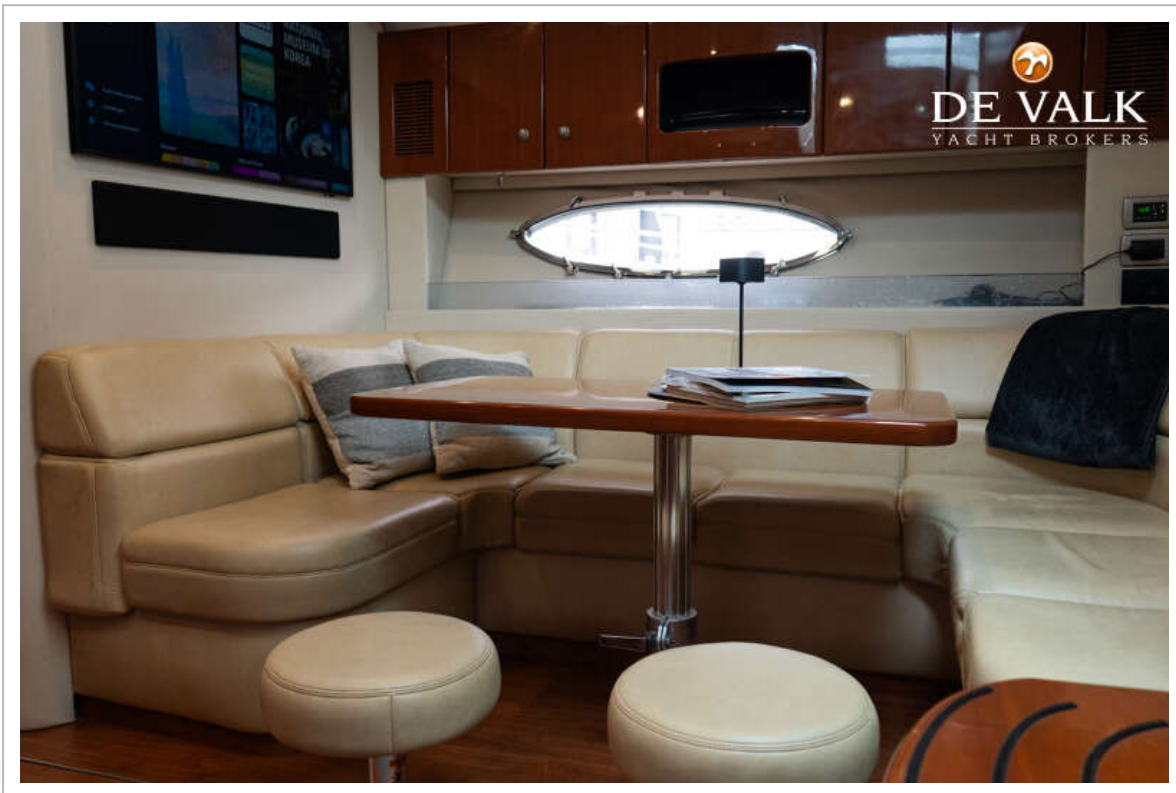
FORMULA 45 YACHT.



FORMULA 45 YACHT.



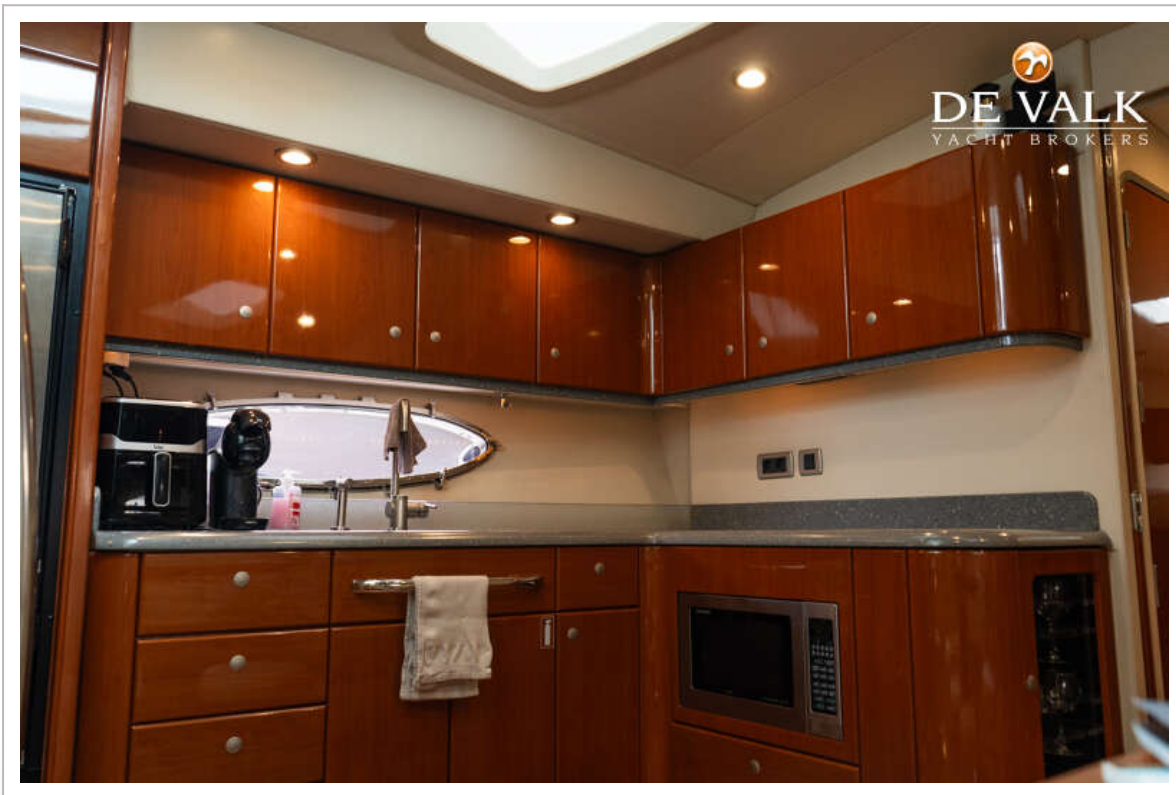
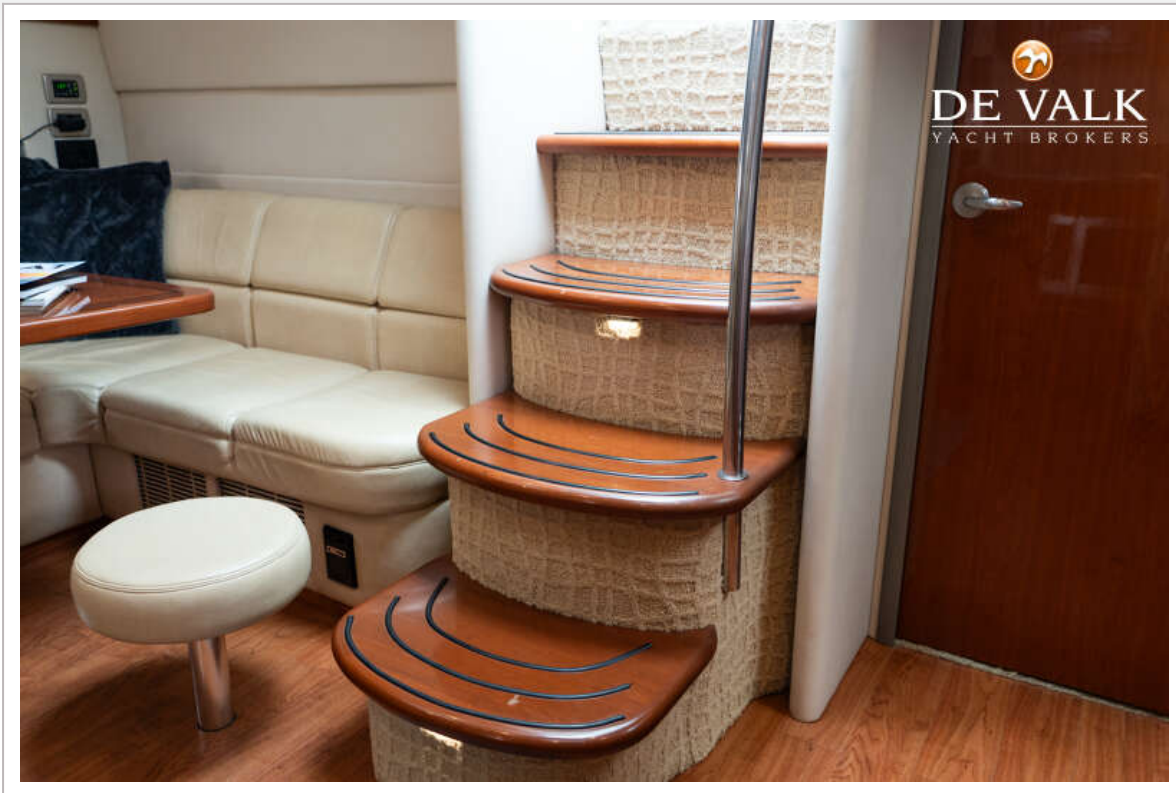
FORMULA 45 YACHT.



FORMULA 45 YACHT.



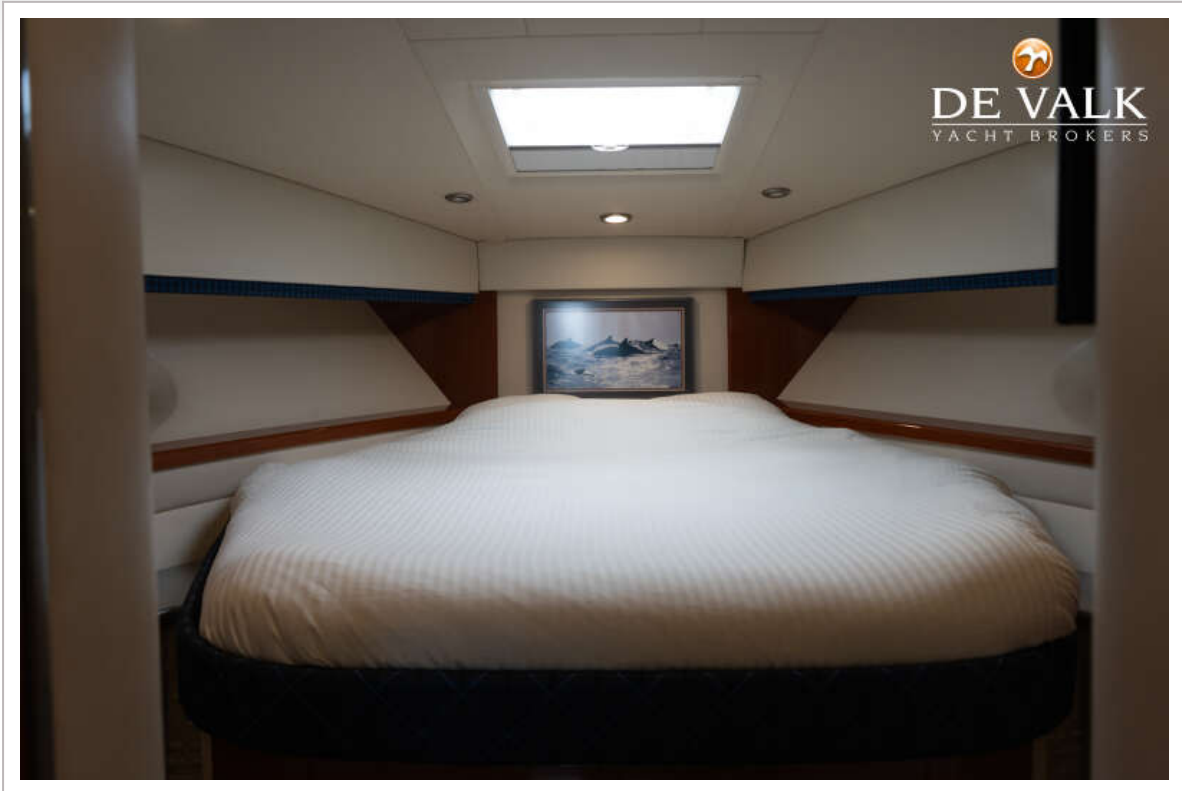
FORMULA 45 YACHT.



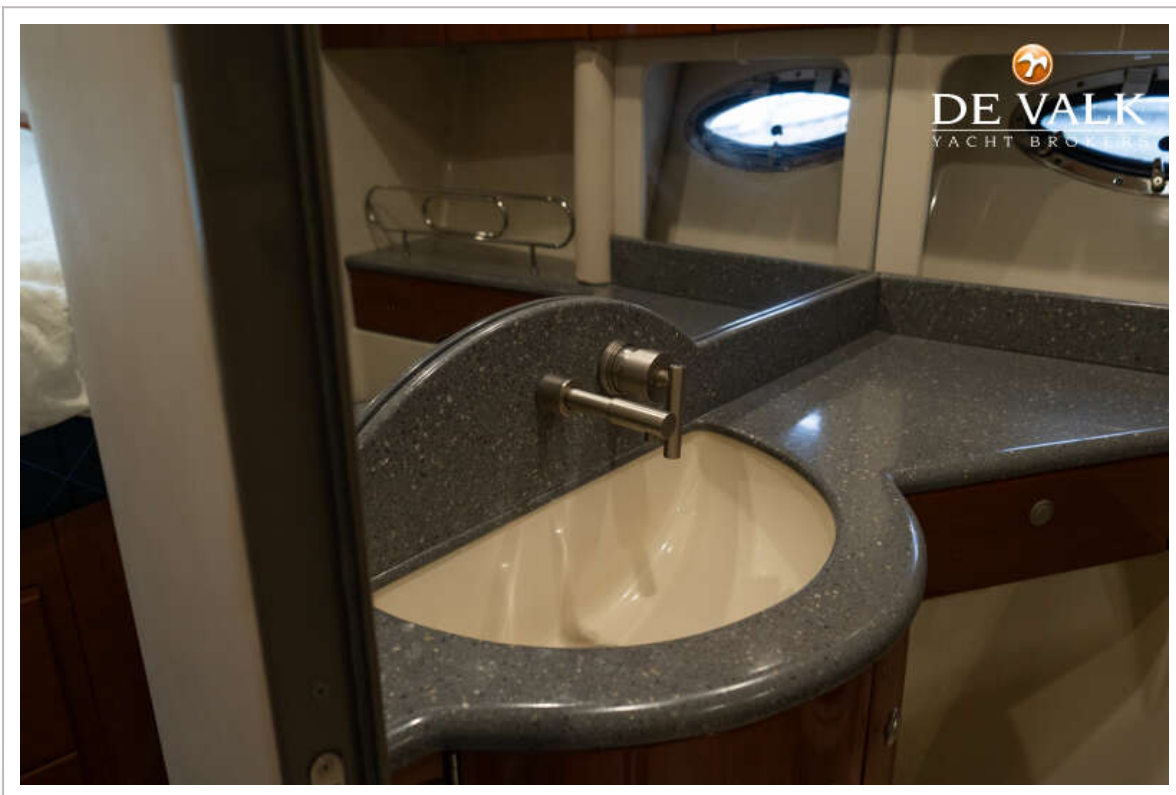
FORMULA 45 YACHT.



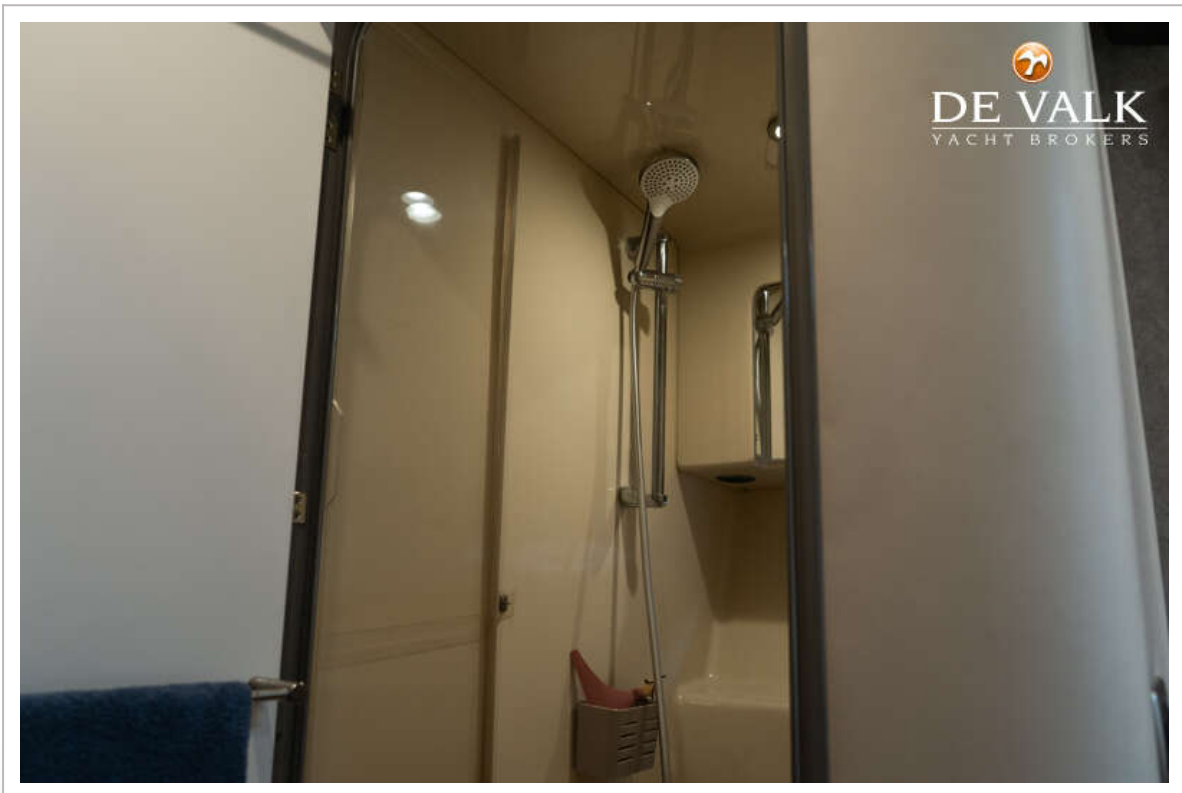
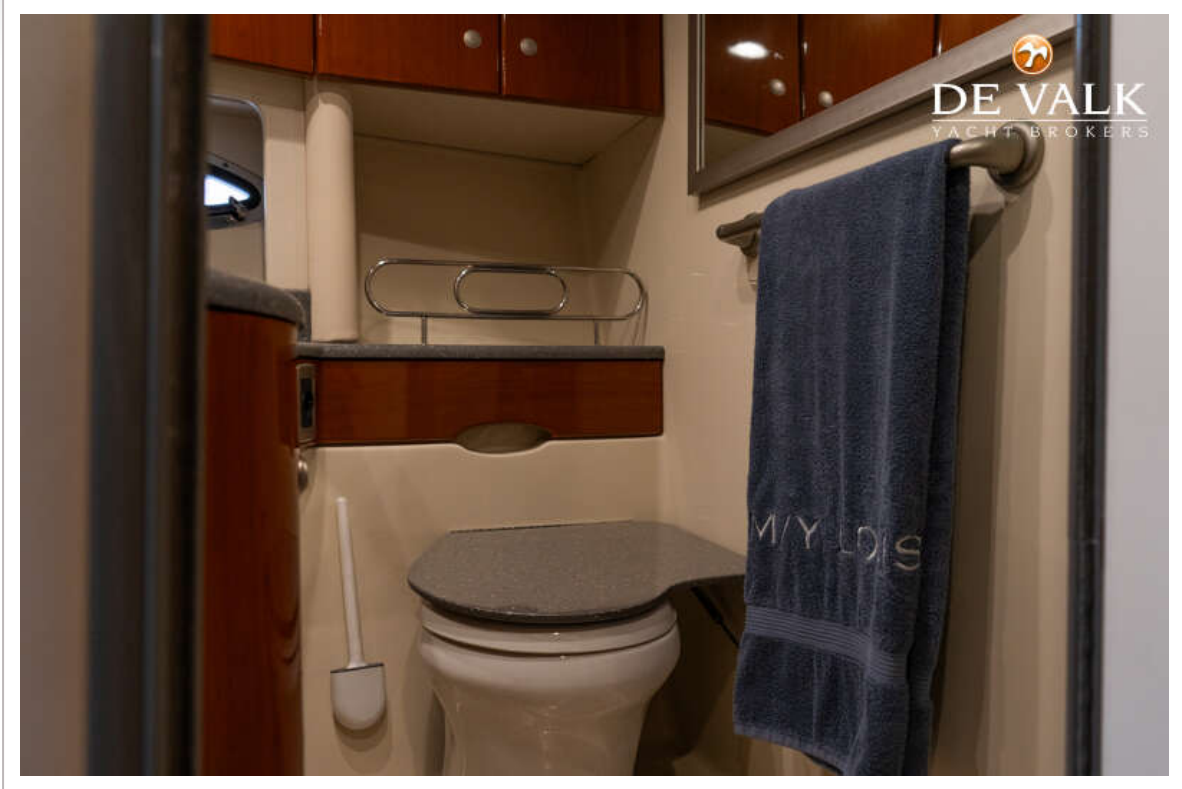
FORMULA 45 YACHT.



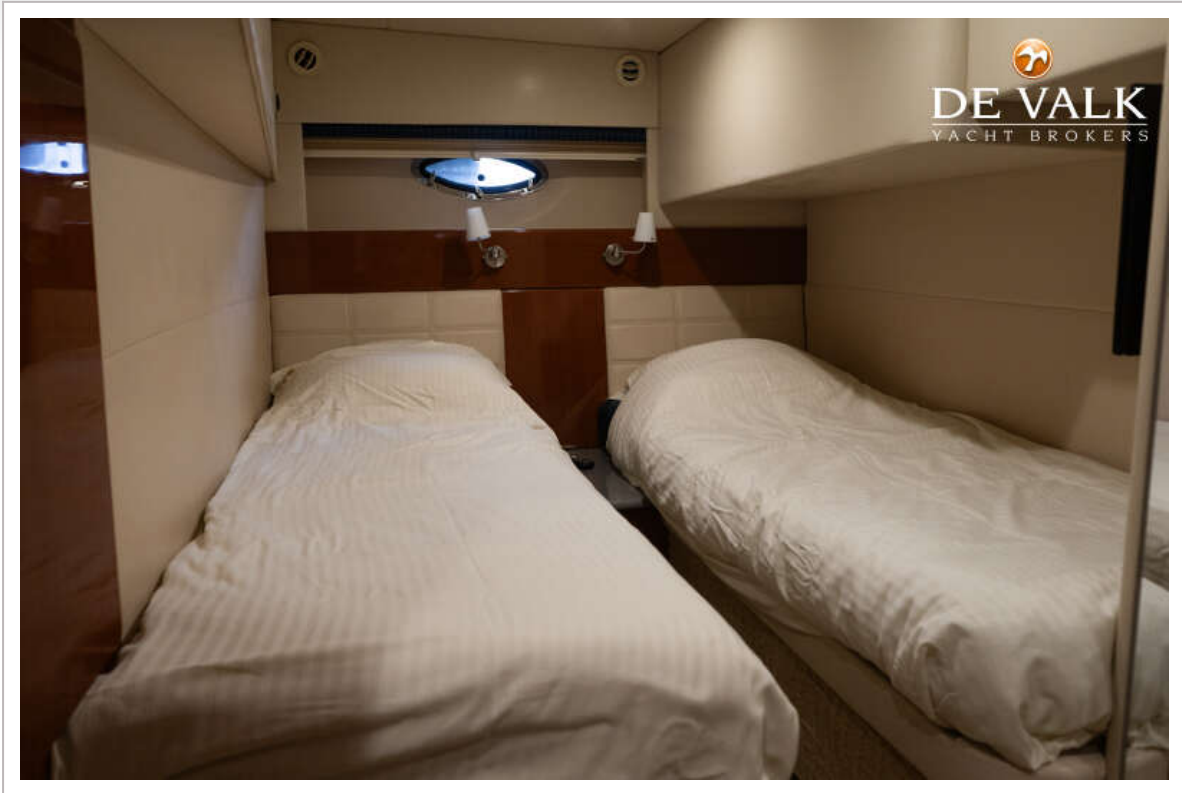
FORMULA 45 YACHT.



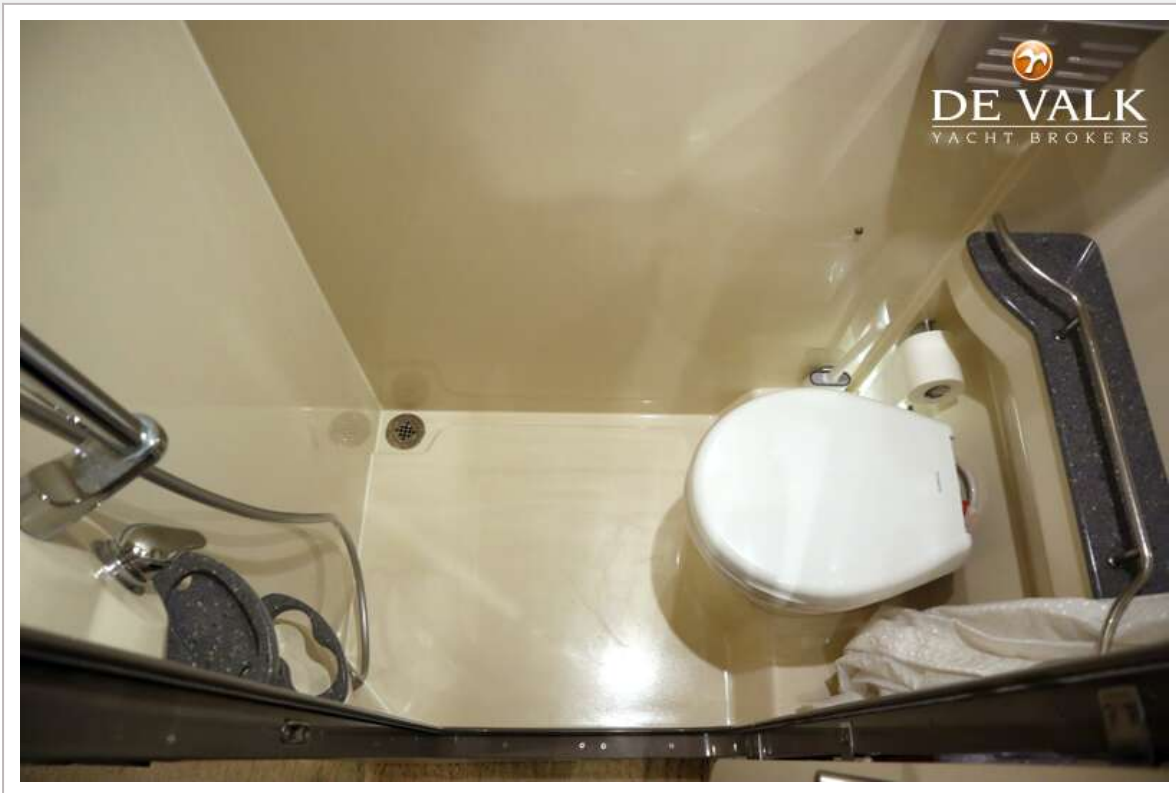
FORMULA 45 YACHT.



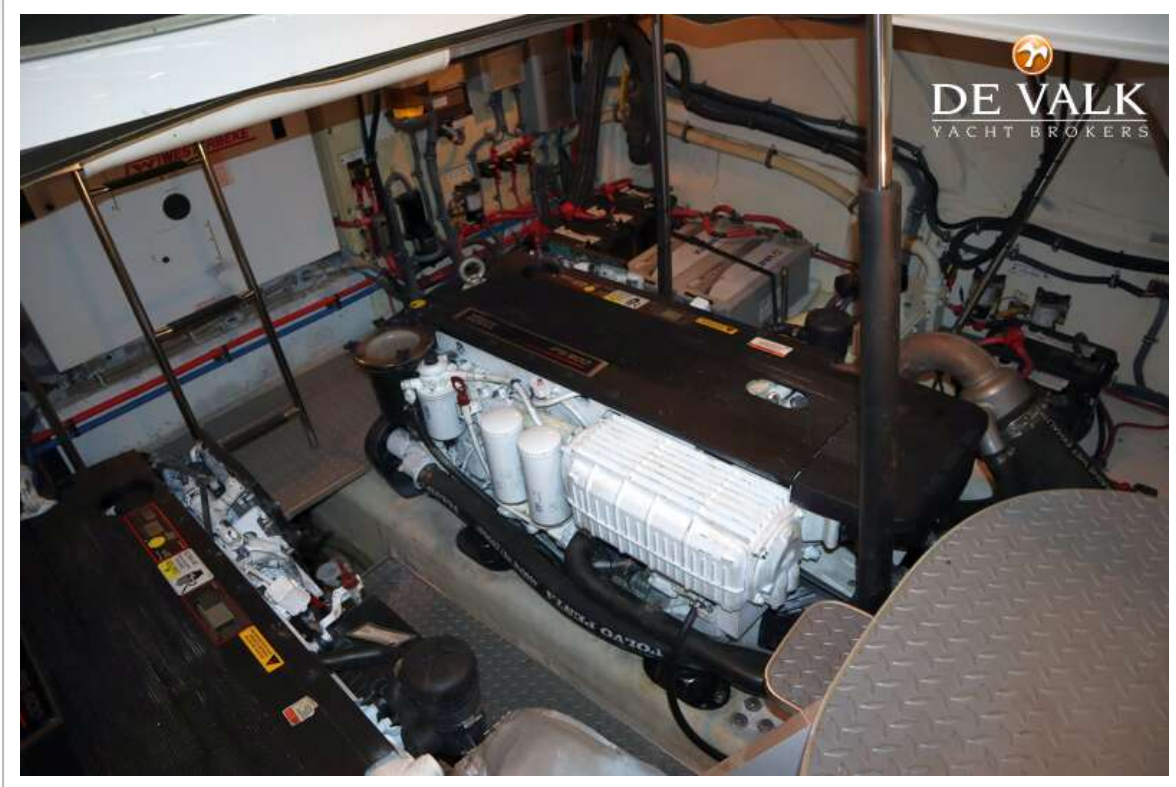
FORMULA 45 YACHT.



FORMULA 45 YACHT.



FORMULA 45 YACHT.



FORMULA 45 YACHT.

